

WEEKLY CRIME STATS

Week Ending May 13 2024

Little Rock Police Department



CLR

#FORWARDTOGETHER

Part I Offense Comparison Citywide

Jan 1 - May 13 2024 v 2023

| PART I INCIDENT | TOTAL | | 2023 v 2023 | Last 5 Years | | 2024 by Division | | | |
|---------------------------------------|-------------|-------------|-------------|--------------|------------|------------------|-------------|-------------|-----------|
| | 2024 | 2023 | % change | Avg. | % change | 12th ST | NW | SW | RM |
| All Homicide Offenses | 13 | 17 | -24% | 21 | -38% | 8 | 1 | 4 | 0 |
| Forcible Rape | 60 | 61 | -2% | 66 | -9% | 23 | 21 | 16 | 0 |
| Robbery | 128 | 157 | -18% | 130 | -1% | 33 | 29 | 63 | 3 |
| Aggravated Assault | 1008 | 988 | 2% | 985 | 2% | 337 | 241 | 412 | 18 |
| Violent Crime | 1209 | 1223 | -1% | 1202 | 1% | 401 | 292 | 495 | 21 |
| Burglary/B & E | 601 | 594 | 1% | 613 | -2% | 163 | 209 | 224 | 5 |
| Larceny/Theft | 2697 | 2707 | 0% | 2776 | -3% | 601 | 1254 | 805 | 37 |
| Motor Vehicle Theft | 341 | 362 | -6% | 363 | -6% | 90 | 136 | 114 | 1 |
| Property Crime | 3639 | 3663 | -1% | 3752 | -3% | 854 | 1599 | 1143 | 43 |
| TOTAL | 4848 | 4886 | -1% | 4954 | -2% | 1255 | 1891 | 1638 | 64 |
| Percentage of Total YTD - by Division | | | | | | 26% | 39% | 34% | 1% |

These figures are based on offenses reported to LRPD and are retrieved from the Department's Records Management System.

The figures may include some offenses that could be reclassified after further investigation.

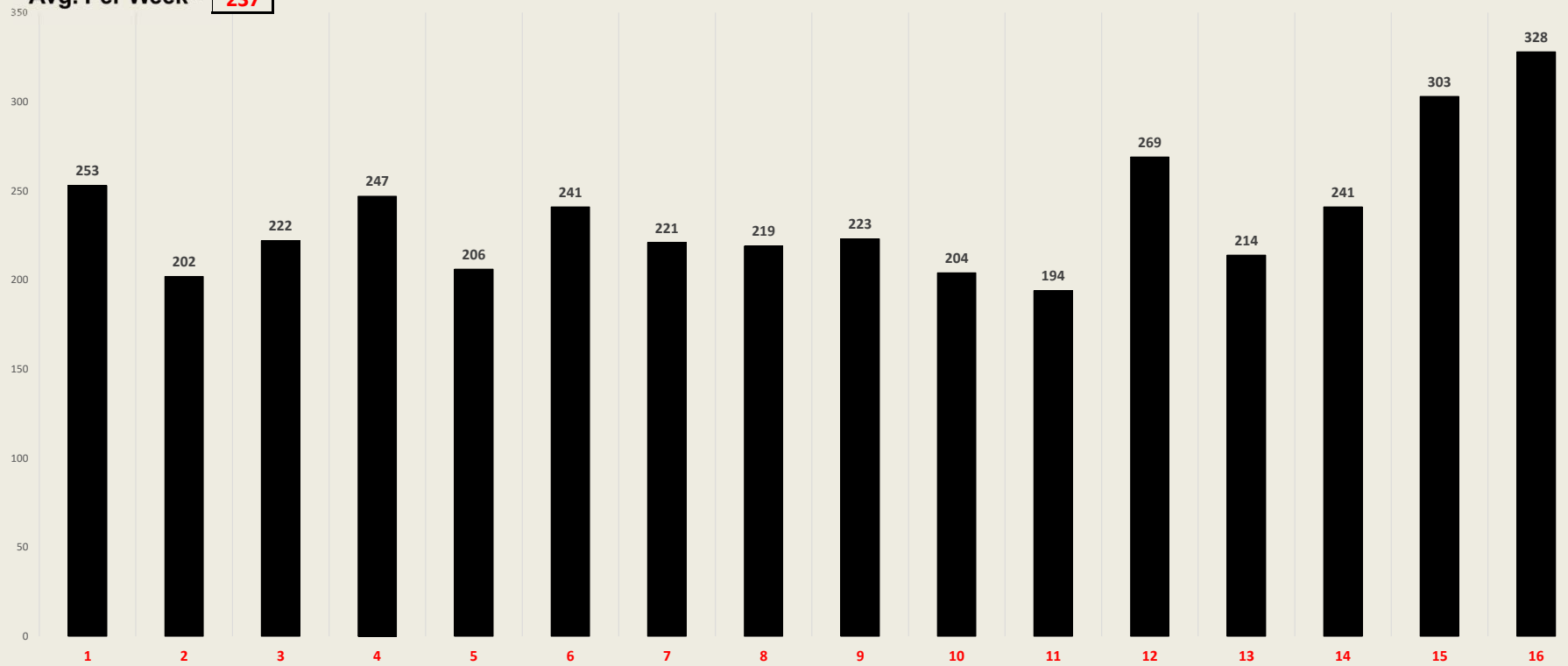
This chart includes all homicide offenses – including justifiable and negligent homicide – even though those aren't Part I Offenses for FBI reporting purposes.

CLR

#FORWARDTOGETHER

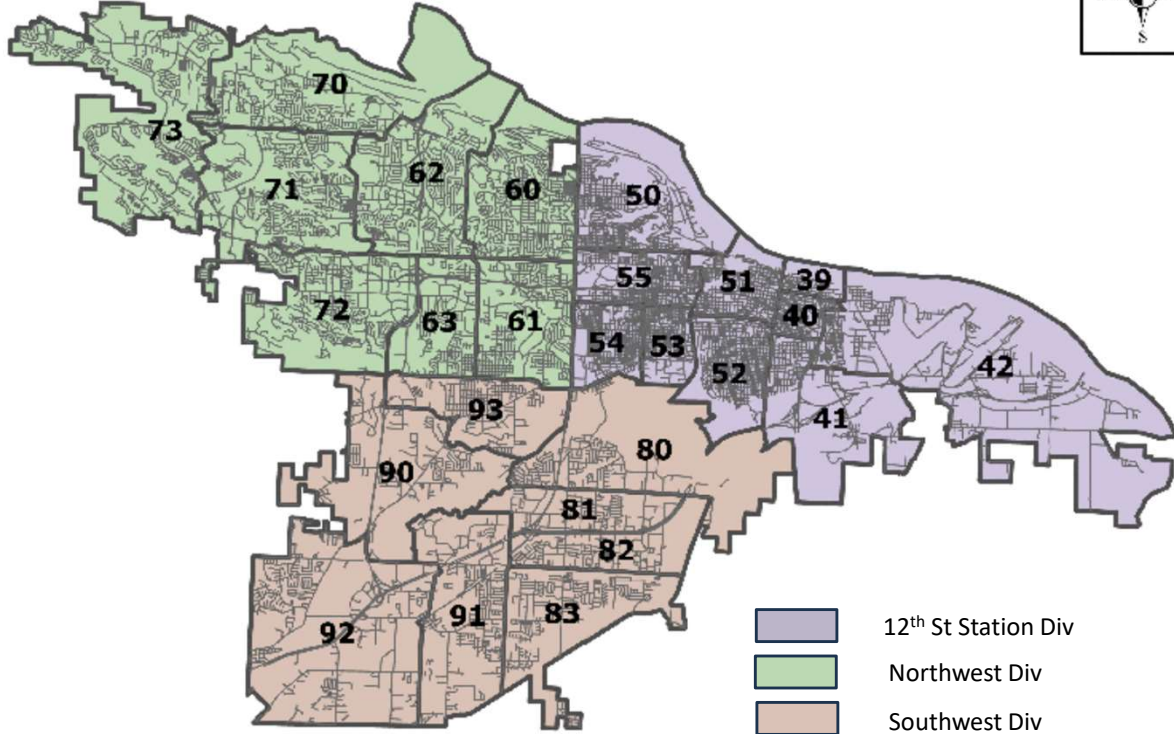
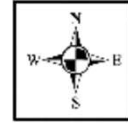
Avg. Per Week - **237**




Citywide Number of Part I Offenses - Last 16 Weeks

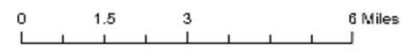


CLR
#FORWARDTOGETHER

City Of Little Rock



-  12th St Station Div
-  Northwest Div
-  Southwest Div



Map date: July 18 2023

CLR

#FORWARDTOGETHER

Part I Offense Comparison - 12th St. Station Division

Jan 1 - May 13 2024 v 2023

| PART I INCIDENT | 12th ST | | 2024 v 2023 | Last 5 Years | | | | | | | | | | | |
|-----------------------|-------------|-------------|-------------|------------------------|-------------|------------|------------|------------|------------|------------|------------|------------|------------|------------|--|
| | 2024 | 2023 | % change | Avg. | % change | 40 | 41 | 42 | 50 | 51 | 52 | 53 | 54 | 55 | |
| All Homicide Offenses | 8 | 9 | -11% | 10 | -17% | 0 | 1 | 2 | 0 | 0 | 2 | 0 | 2 | 1 | |
| Forcible Rape | 23 | 21 | 10% | 26 | -11% | 0 | 2 | 0 | 1 | 4 | 2 | 2 | 5 | 7 | |
| Robbery | 33 | 52 | -37% | 48 | -32% | 2 | 4 | 5 | 0 | 0 | 5 | 8 | 7 | 2 | |
| Aggravated Assault | 337 | 301 | 12% | 355 | -5% | 15 | 17 | 32 | 10 | 20 | 66 | 32 | 84 | 61 | |
| Violent Crime | 401 | 383 | 5% | 439 | -9% | 17 | 24 | 39 | 11 | 24 | 75 | 42 | 98 | 71 | |
| | | | | VC% by district | | 4% | 6% | 10% | 3% | 6% | 19% | 10% | 24% | 18% | |
| Burglary/B & E | 163 | 174 | -6% | 180 | -10% | 11 | 12 | 11 | 19 | 10 | 30 | 19 | 34 | 17 | |
| Larceny/Theft | 601 | 683 | -12% | 830 | -28% | 72 | 58 | 52 | 95 | 73 | 65 | 54 | 55 | 77 | |
| Motor Vehicle Theft | 90 | 103 | -13% | 123 | -27% | 9 | 6 | 24 | 12 | 5 | 9 | 5 | 8 | 12 | |
| Property Crime | 854 | 960 | -11% | 1133 | -25% | 92 | 76 | 87 | 126 | 88 | 104 | 78 | 97 | 106 | |
| | | | | PC% by district | | 11% | 9% | 10% | 15% | 10% | 12% | 9% | 11% | 12% | |
| TOTAL | 1255 | 1343 | -7% | 1572 | -20% | 109 | 100 | 126 | 137 | 112 | 179 | 120 | 195 | 177 | |
| | | | | TC% by district | | 9% | 8% | 10% | 11% | 9% | 14% | 10% | 16% | 14% | |

These figures are based on offenses reported to LRPD and are retrieved from the Department's Records Management System.

The figures may include some offenses that could be reclassified after further investigation.

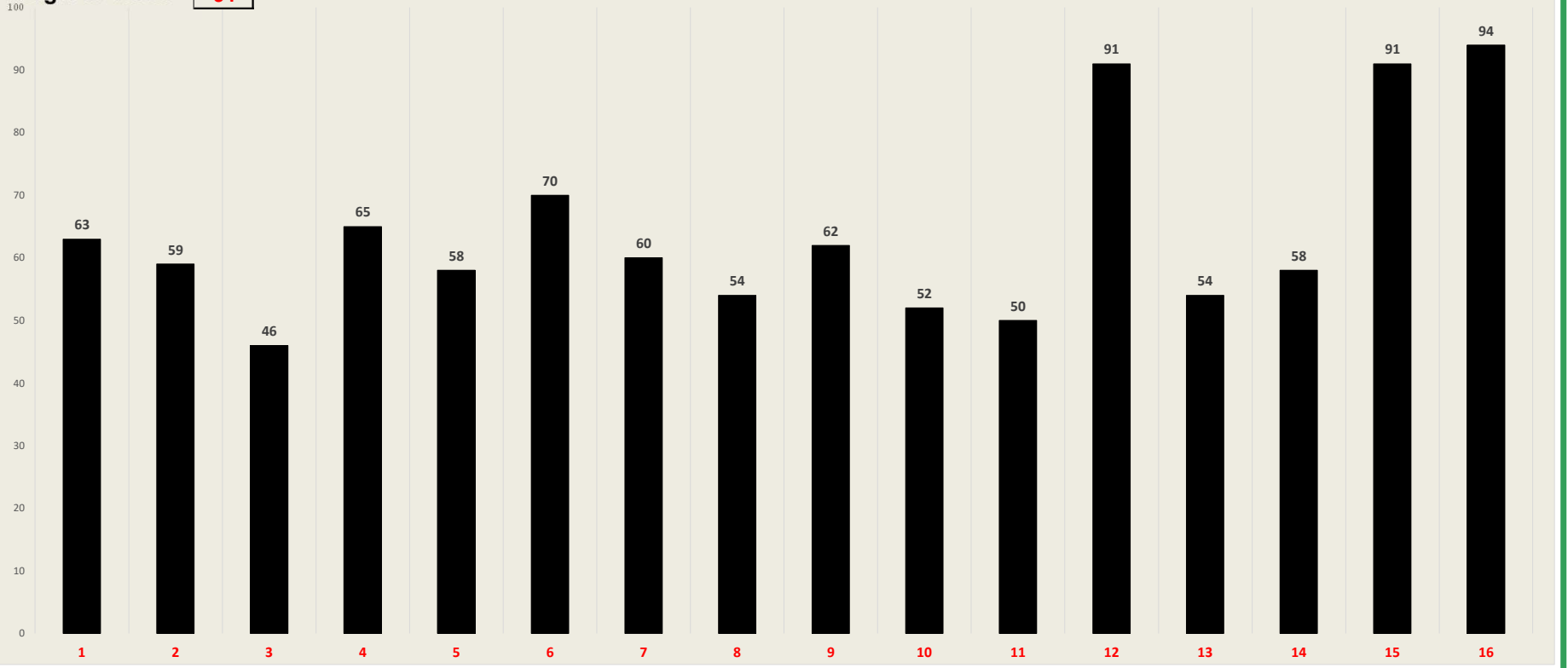
This chart includes all homicide offenses – including justifiable and negligent homicide – even though those aren't Part I Offenses for FBI reporting purposes.

CLR

#FORWARDTOGETHER

Avg. Per Week - **64**

12th St. Station Division Number of Part I Offenses - Last 16 Weeks



CLR
#FORWARDTOGETHER

Part I Offense Comparison - Northwest

Jan 1 - May 13 2024 v 2023

| PART I INCIDENT | NW | | 2024 v 2023 | Last 5 Years | | YTD 2024 - BY DISTRICT | | | | | | | |
|-----------------------|-------------|-------------|-------------|------------------------|------------|------------------------|------------|------------|------------|-----------|------------|------------|-----------|
| | 2024 | 2023 | % change | Avg. | % change | 60 | 61 | 62 | 63 | 70 | 71 | 72 | 73 |
| All Homicide Offenses | 1 | 4 | -75% | 6 | -82% | 1 | 0 | 0 | 0 | 0 | 0 | 0 | 0 |
| Forcible Rape | 21 | 18 | 17% | 19 | 11% | 1 | 4 | 6 | 4 | 1 | 0 | 5 | 0 |
| Robbery | 29 | 36 | -19% | 34 | -16% | 2 | 8 | 7 | 6 | 1 | 1 | 4 | 0 |
| Aggravated Assault | 241 | 255 | -5% | 260 | -7% | 34 | 73 | 48 | 45 | 7 | 10 | 18 | 6 |
| Violent Crime | 292 | 313 | -7% | 319 | -8% | 38 | 85 | 61 | 55 | 9 | 11 | 27 | 6 |
| | | | | VC% by district | | 13% | 29% | 21% | 19% | 3% | 4% | 9% | 2% |
| Burglary/B & E | 209 | 218 | -4% | 202 | 4% | 27 | 40 | 61 | 23 | 11 | 15 | 24 | 8 |
| Larceny/Theft | 1254 | 1167 | 7% | 1193 | 5% | 86 | 203 | 233 | 199 | 46 | 154 | 288 | 45 |
| Motor Vehicle Theft | 136 | 115 | 18% | 114 | 20% | 19 | 29 | 38 | 14 | 2 | 12 | 16 | 6 |
| Property Crime | 1599 | 1500 | 7% | 1509 | 6% | 132 | 272 | 332 | 236 | 59 | 181 | 328 | 59 |
| | | | | PC% by district | | 8% | 17% | 21% | 15% | 4% | 11% | 21% | 4% |
| TOTAL | 1891 | 1813 | 4% | 1828 | 3% | 170 | 357 | 393 | 291 | 68 | 192 | 355 | 65 |
| | | | | TC% by district | | 9% | 19% | 21% | 15% | 4% | 10% | 19% | 3% |

These figures are based on offenses reported to LRPD and are retrieved from the Department's Records Management System.

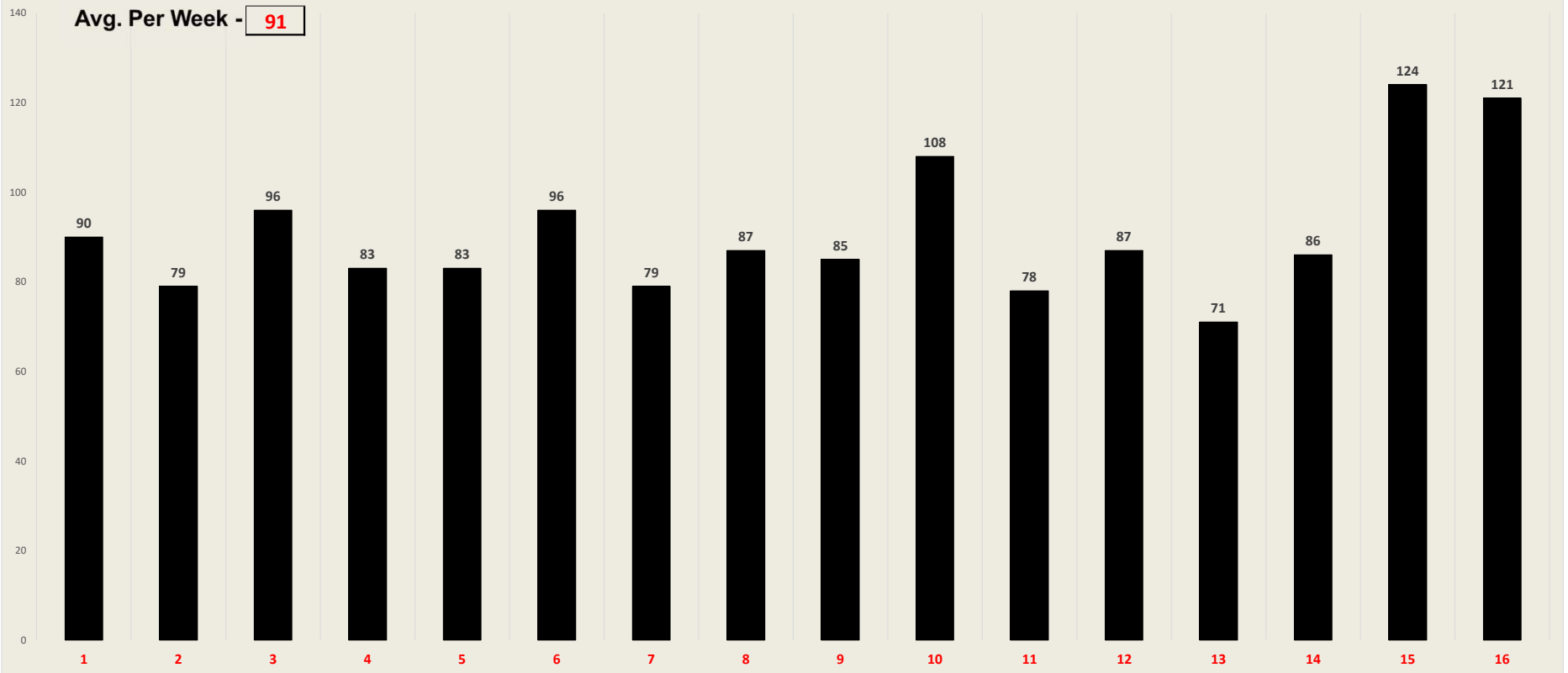
The figures may include some offenses that could be reclassified after further investigation.

This chart includes all homicide offenses – including justifiable and negligent homicide – even though those aren't Part I Offenses for FBI reporting purposes.

CLR

#FORWARDTOGETHER

NW Division Number of Part Offenses - Last 16 Weeks



Part I Offense Comparison - Southwest

Jan 1 - May 13 2024 v 2023

| PART I INCIDENT | SW | | 2024 v 2023 | Last 5 Years | | YTD 2024 - BY DISTRICT | | | | | | | |
|-----------------------|-------------|-------------|-------------|------------------------|------------|------------------------|------------|------------|------------|-----------|------------|------------|------------|
| | 2024 | 2023 | % change | Avg. | % change | 80 | 81 | 82 | 83 | 90 | 91 | 92 | 93 |
| All Homicide Offenses | 4 | 4 | 0% | 6 | -29% | 0 | 1 | 0 | 0 | 0 | 0 | 2 | 1 |
| Forcible Rape | 16 | 22 | -27% | 21 | -25% | 2 | 1 | 2 | 4 | 0 | 3 | 4 | 0 |
| Robbery | 63 | 64 | -2% | 47 | 35% | 9 | 9 | 15 | 6 | 4 | 4 | 10 | 6 |
| Aggravated Assault | 412 | 426 | -3% | 370 | 11% | 66 | 77 | 72 | 56 | 12 | 50 | 46 | 33 |
| Violent Crime | 495 | 516 | -4% | 444 | 12% | 77 | 88 | 89 | 66 | 16 | 57 | 62 | 40 |
| | | | | VC% by district | | 16% | 18% | 18% | 13% | 3% | 12% | 13% | 8% |
| Burglary/B & E | 224 | 200 | 12% | 231 | -3% | 28 | 35 | 39 | 31 | 10 | 37 | 20 | 24 |
| Larceny/Theft | 805 | 795 | 1% | 753 | 7% | 101 | 81 | 94 | 101 | 39 | 176 | 157 | 56 |
| Motor Vehicle Theft | 114 | 139 | -18% | 126 | -10% | 16 | 13 | 21 | 11 | 8 | 19 | 19 | 7 |
| Property Crime | 1143 | 1134 | 1% | 1110 | 3% | 145 | 129 | 154 | 143 | 57 | 232 | 196 | 87 |
| | | | | PC% by district | | 13% | 11% | 13% | 13% | 5% | 20% | 17% | 8% |
| TOTAL | 1638 | 1650 | -1% | 1554 | 5% | 222 | 217 | 243 | 209 | 73 | 289 | 258 | 127 |
| | | | | TC% by district | | 14% | 13% | 15% | 13% | 4% | 18% | 16% | 8% |

These figures are based on offenses reported to LRPD and are retrieved from the Department's Records Management System.

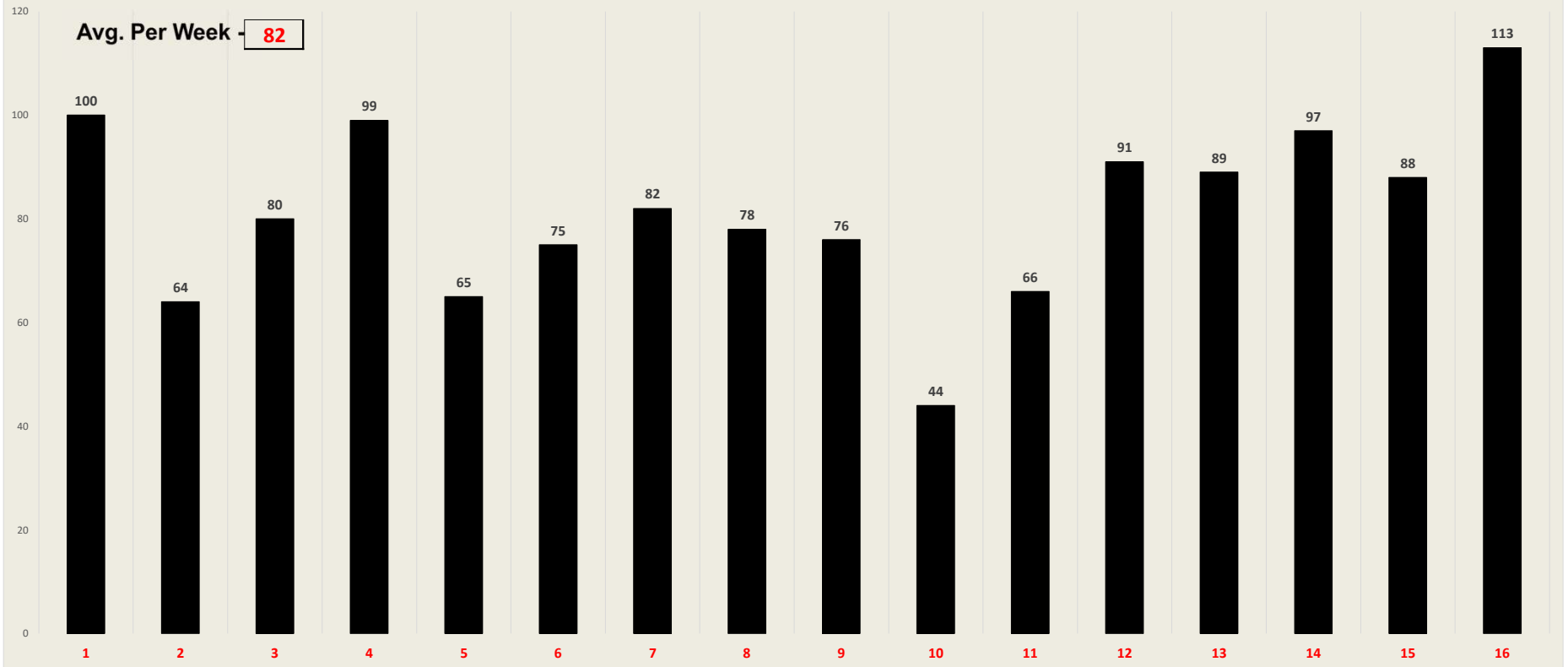
The figures may include some offenses that could be reclassified after further investigation.

This chart includes all homicide offenses – including justifiable and negligent homicide – even though those aren't Part I Offenses for FBI reporting purposes.

CLR

#FORWARDTOGETHER

SW Division Number of Part I Offenses - Last 16 Weeks



Part I Offense Comparison - Special Operations Division - River Market

Jan 1 - May 13 2024 v 2023

| PART I INCIDENT | RM | | 2024 v 2023 |
|-----------------------|-----------|-----------|-------------|
| | 2024 | 2023 | % change |
| All Homicide Offenses | 0 | 0 | NC |
| Forcible Rape | 0 | 0 | NA |
| Robbery | 3 | 5 | -40% |
| Aggravated Assault | 18 | 6 | 200% |
| Violent Crime | 21 | 11 | 91% |
| Burglary/B & E | 5 | 2 | 150% |
| Larceny/Theft | 37 | 62 | -40% |
| Motor Vehicle Theft | 1 | 5 | -80% |
| Property Crime | 43 | 69 | -38% |
| TOTAL | 64 | 80 | -20% |

CLR

#FORWARDTOGETHER