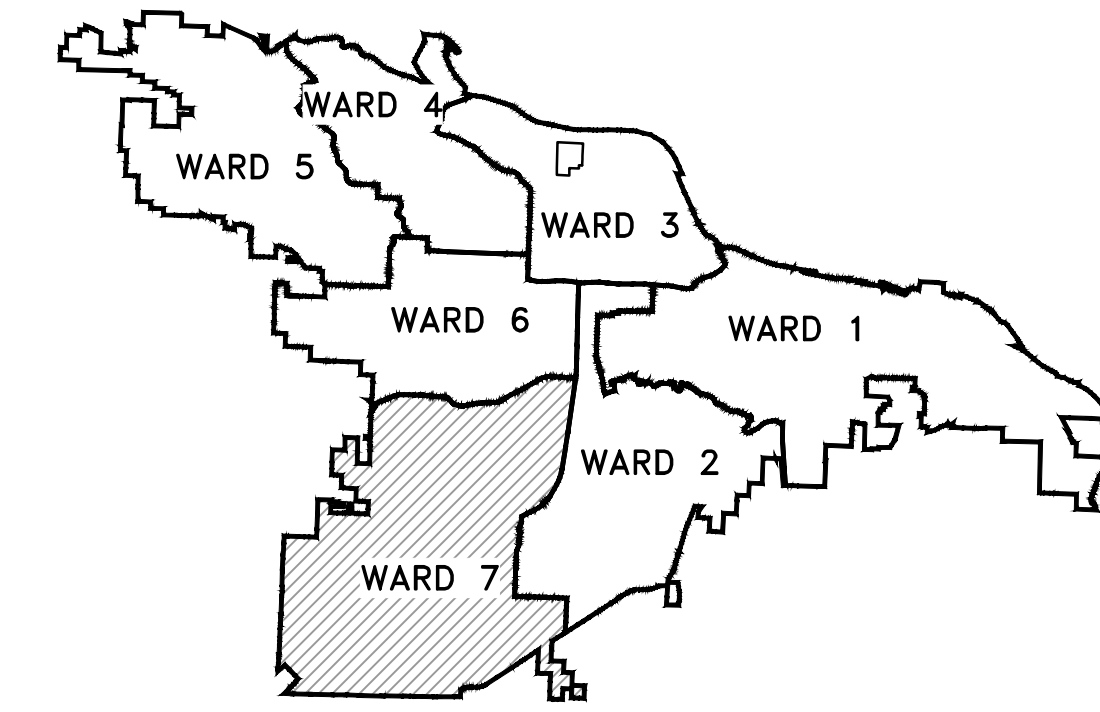


# HEINKE ROAD DRAINAGE

## South OF Johnson Road

### PROJECT LOCATION



PROJECT LOCATION – WARD 7

SHEET NO.	TITLE
C1	COVER SHEET
C2	GENERAL NOTES, LEGEND AND QUANTITIES
C3	EXISTING CONDITIONS
C4	PLAN VIEW
C5	DEMOLITION AND ASPHALT PLAN
C6	CROSS SECTION
C7	MAINTENANCE OF TRAFFIC



**2022-2024**  
**BOND PROGRAM**

DEPARTMENT OF PUBLIC WORKS  
CIVIL ENGINEERING  
701 WEST MARKHAM STREET  
LITTLE ROCK, ARKANSAS 72201

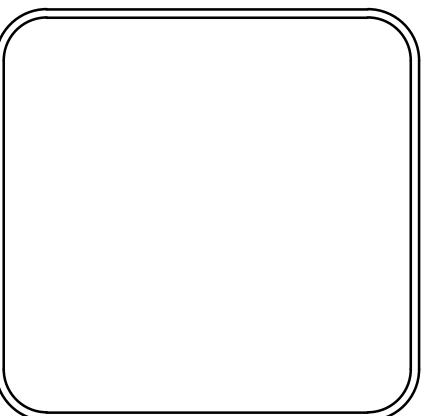


Know what's below.  
Call before you dig.

REVISIONS	DATE

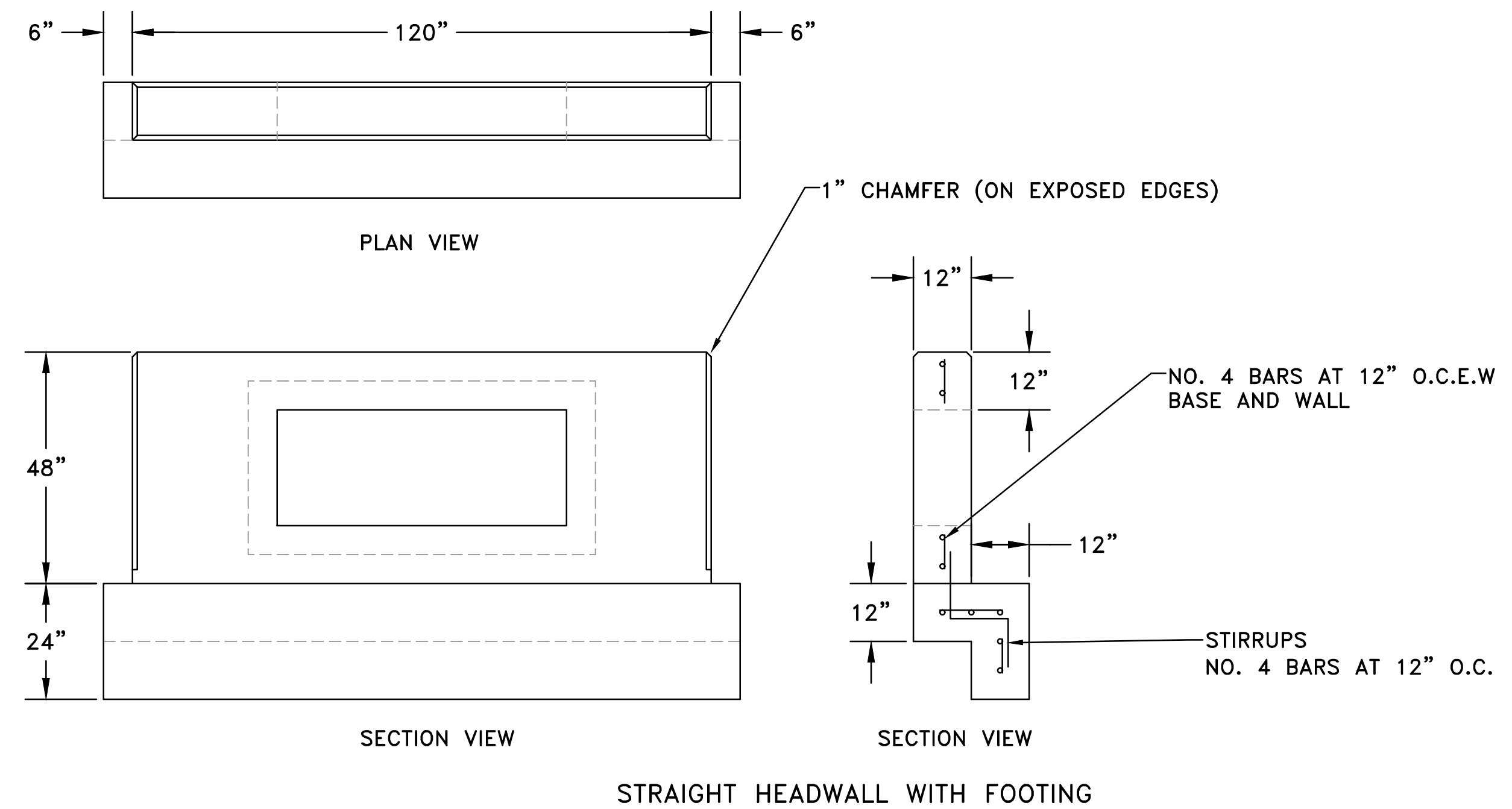
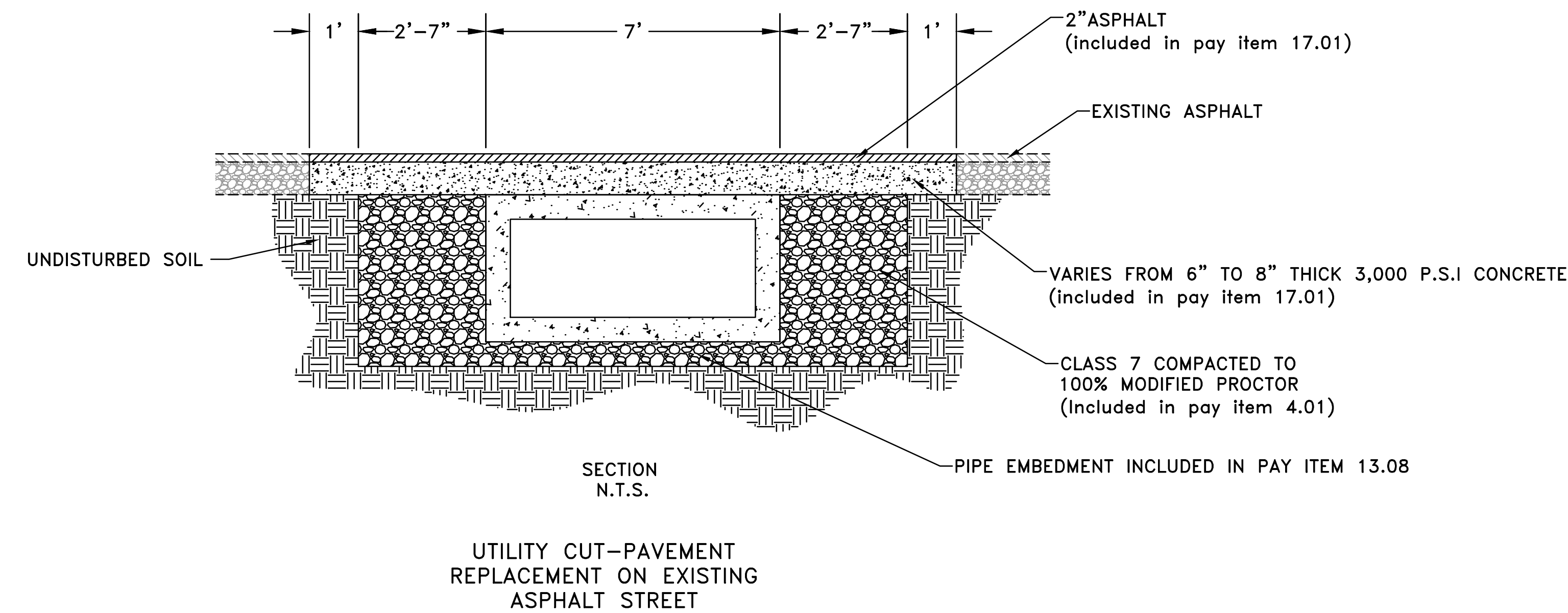
CITY OF LITTLE ROCK, ARKANSAS  
HEINKE ROAD DRAINAGE  
COVER SHEET

DEPARTMENT OF PUBLIC WORKS  
CIVIL ENGINEERING  
701 W. MARKHAM  
LITTLE ROCK, ARKANSAS 72201



DRAWN BY	VH
DESIGNED	VH
CHECKED	DH
DATE	1/2/2024
SCALE	1"=500'
PROJECT NO.	CLR #??
SHEET NO.	C1

CLR PROJECT 23-			
HEINKE ROAD DRAINAGE SOUTH OF JOHNSON ROAD			
3-Jan-24			
ITEM #	ITEM DESCRIPTION	UNIT	QUANTITY
2.01	SITE PREPARATION AND MOBILIZATION	LS	1
4.01	AGGREGATE BASE COURSE	TON	30
11.06	REINFORCED CONCRETE HEADWALL PER DETAIL BELOW	CY	6
13.08	3' X 6' REINFORCED CONCRETE BOX CULVERT	LF	24
14.01	SOLID SODDING, BERMUDA (INCLUDES 4" OF TOPSOIL)	SY	24
16.01	MAINTENACE OF TRAFFIC	LS	1
17.01	PAVEMENT REPAIRS PER DETAIL BELOW	SY	25
19.01	FINAL CLEAN UP	LS	1
24.02	CHECK DAM (CD)	CY	13
SP	ASBUILT	LS	1
<b>SUB-TOTAL</b>			
<b>10% CONTINGENCY</b>			
<b>GRAND-TOTAL</b>			

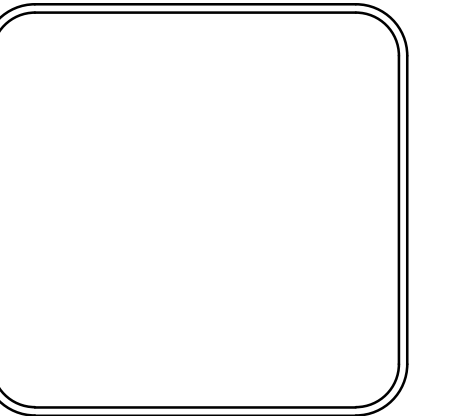


EXISTING	PROPOSED
IRON ROD	PROPOSED CONTOUR
PK NAIL	PROPOSED SPOT ELEVATION
R.R. SPIKE	PROPOSED SPOT CURB ELEVATION
CONC. MONUMENT	STORM SEWER - PIPE
WATER VALVE	STORM SEWER - MITERED END SECTION
WATER METER	STORM SEWER - GRATE INLET
FIRE HYDRANT	STORM SEWER - JUNCTION BOX
GAS METER	STORM SEWER - FLARED END SECTION
GAS VALVE	STORM SEWER - HEADWALL
CLEAN-OUT	STORM SEWER - SINGLE WING
GUARD POST (BOLLARD)	STORM SEWER - DOUBLE WING
SIGN POST	STORM SEWER - AREA INLET
BENCHMARK	GRADE BREAK LINE
STORM SEWER MANHOLE	HIGH POINT
SANITARY SEWER MANHOLE	LOW POINT
TELEPHONE MANHOLE	CUT LINE
ELECTRIC MANHOLE	FILL LINE
TELEPHONE BOX	SANITARY SEWER PIPE
ELECTRIC BOX	SANITARY SEWER MANHOLE
CABLE BOX	PROPOSED CURB
UTILITY POLE	PROPOSED CONCRETE
GUY WIRE	CONSTRUCTION - ENTRANCE/EXIT
LIGHT POLE	CHECK DAM
POST OR POLE (TYPE AS NOTED)	DIVERSION BERM
MAILBOX	DOWNDRAIN STRUCTURE - TEMPORARY
DECIDUOUS TREE	ROCK DAM
EVERGREEN/CONIFEROUS TREE	SEDIMENT BARRIER - SILT FENCE
BUSH	SEDIMENT BARRIER - GRAVEL RING
PROPERTY LINE	SEDIMENT BARRIER - BLOCK & GRAVEL
SETBACK LINE	SEDIMENT BARRIER - BLOCK
EASEMENT LINE	TEMPORARY SEDIMENT BASIN
CURB	SILT FENCE - TYPE A
FENCE	SILT FENCE - TYPE B
OVERHEAD ELECTRIC	SILT FENCE - TYPE C
OVERHEAD TELEPHONE	STORM DRAIN OUTLET PROTECTION
OVERHEAD CABLE	SURFACE ROUGHENING
UNDERGROUND TELEPHONE	DISTURBED AREA STABILIZATION - TEMPORARY STABILIZATION
UNDERGROUND ELECTRIC	DISTURBED AREA STABILIZATION - TEMPORARY GRASSING
UNDERGROUND CABLE	DISTURBED AREA STABILIZATION - PERMANENT GRASSING
WATER LINE	MATting/BLANKETS
SEWER LINE	
GAS LINE	
STORM SEWER/CULVERT	
EDGE OF WOODS	
CONTOUR LINE	

REVISIONS	DATE

CITY OF LITTLE ROCK, ARKANSAS  
44TH STREET IMPROVEMENTS  
GENERAL NOTES, LEGEND AND QUANTITIES

DEPARTMENT OF PUBLIC WORKS  
CIVIL ENGINEERING  
701 W. MARKHAM  
LITTLE ROCK, ARKANSAS 72201

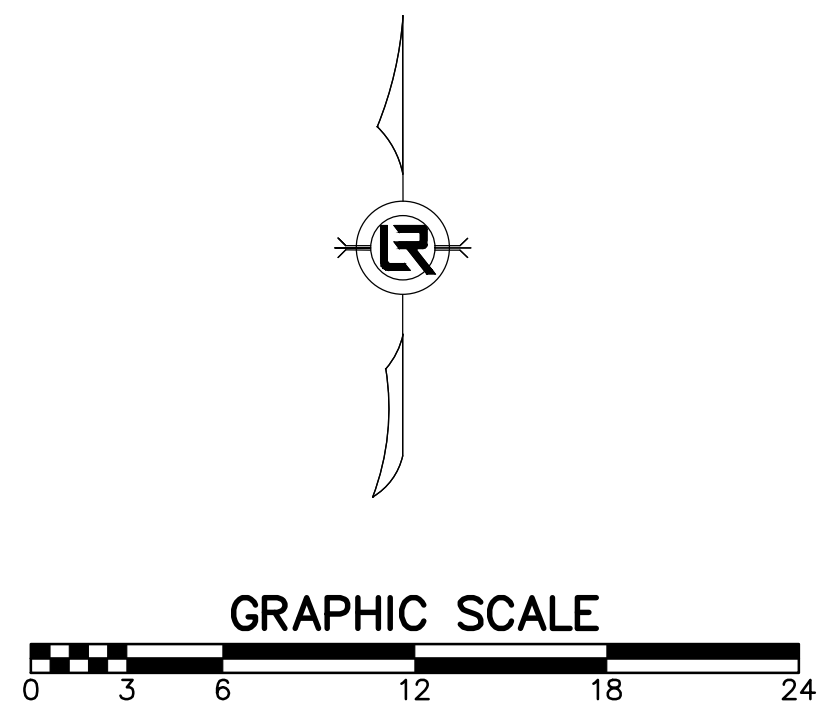
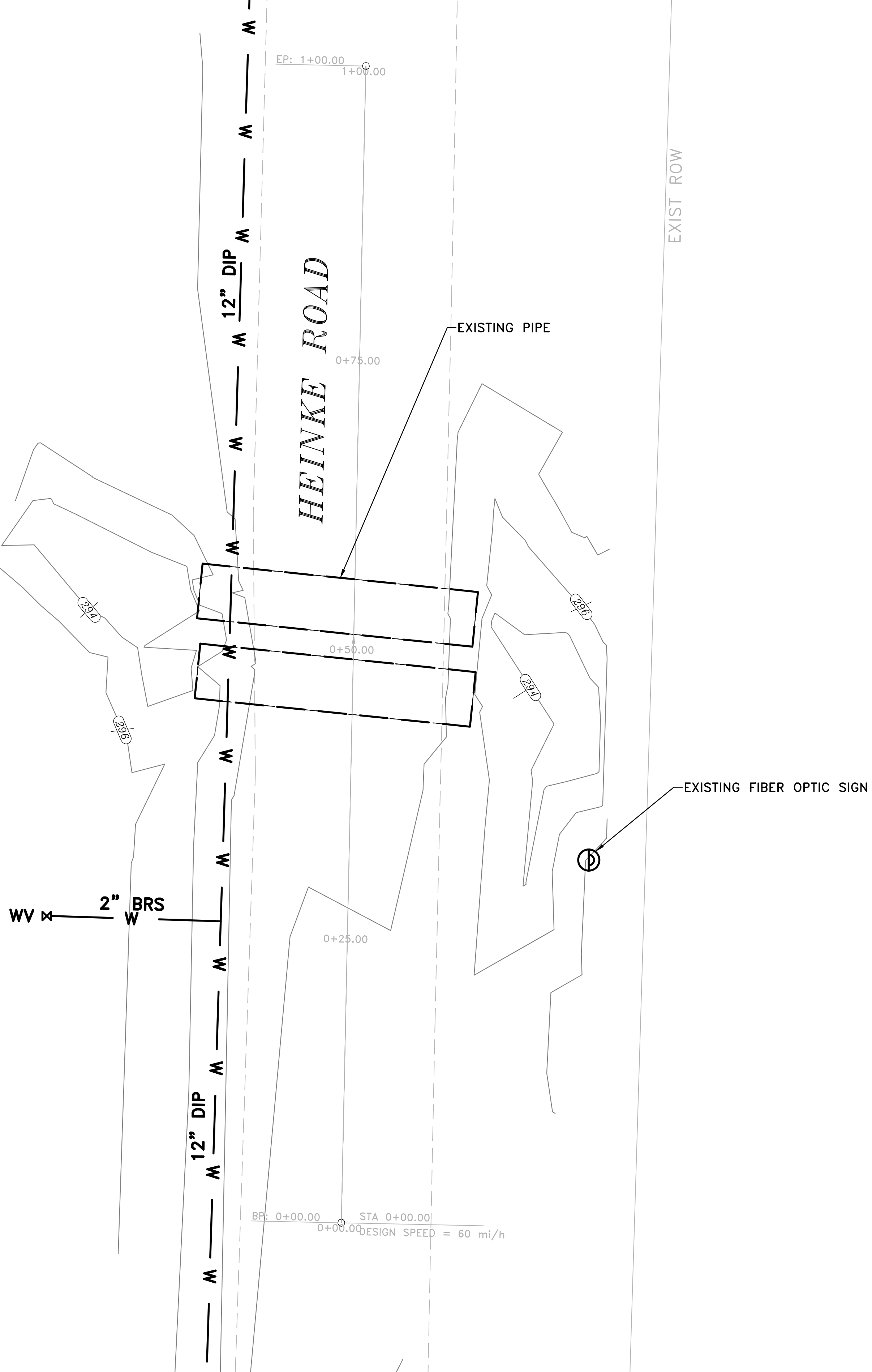


DRAWN BY  
FV  
DESIGNED  
DH  
CHECKED  
VH  
DATE  
1/2/2024  
SCALE  
N.T.S  
PROJECT NO.  
SHEET NO.  
C2

CYNTHIA FAYNE  
45L0890005000

INDIGO PROPERTIES  
13125 HEINKE RD  
45L0880005580

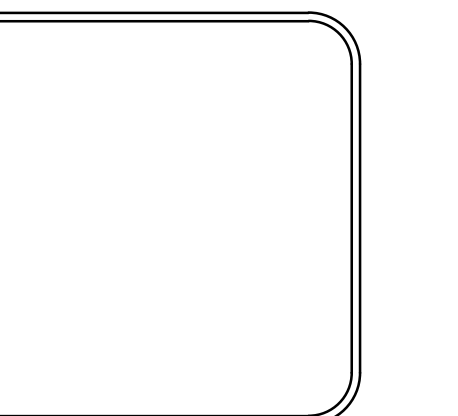
EXIST ROW SS --- SS --- SS --- SS --- SS --- SS --- SS --- SS --- SS --- SS --- SS --- SS --- SS --- SS --- SS



REVISIONS	DATE

CITY OF LITTLE ROCK, ARKANSAS  
HEINKE ROAD DRAINAGE  
EXISTING CONDITIONS

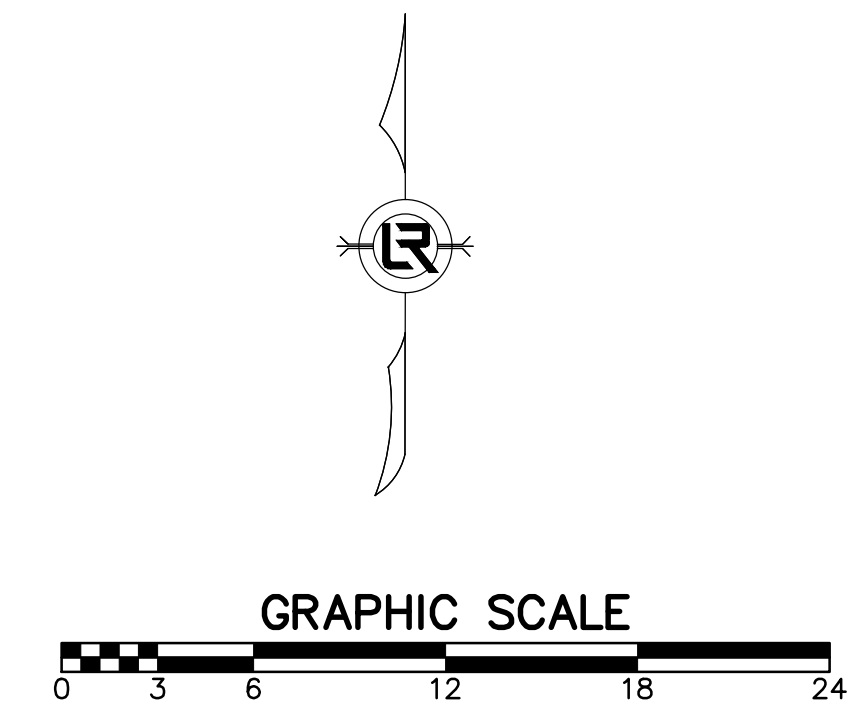
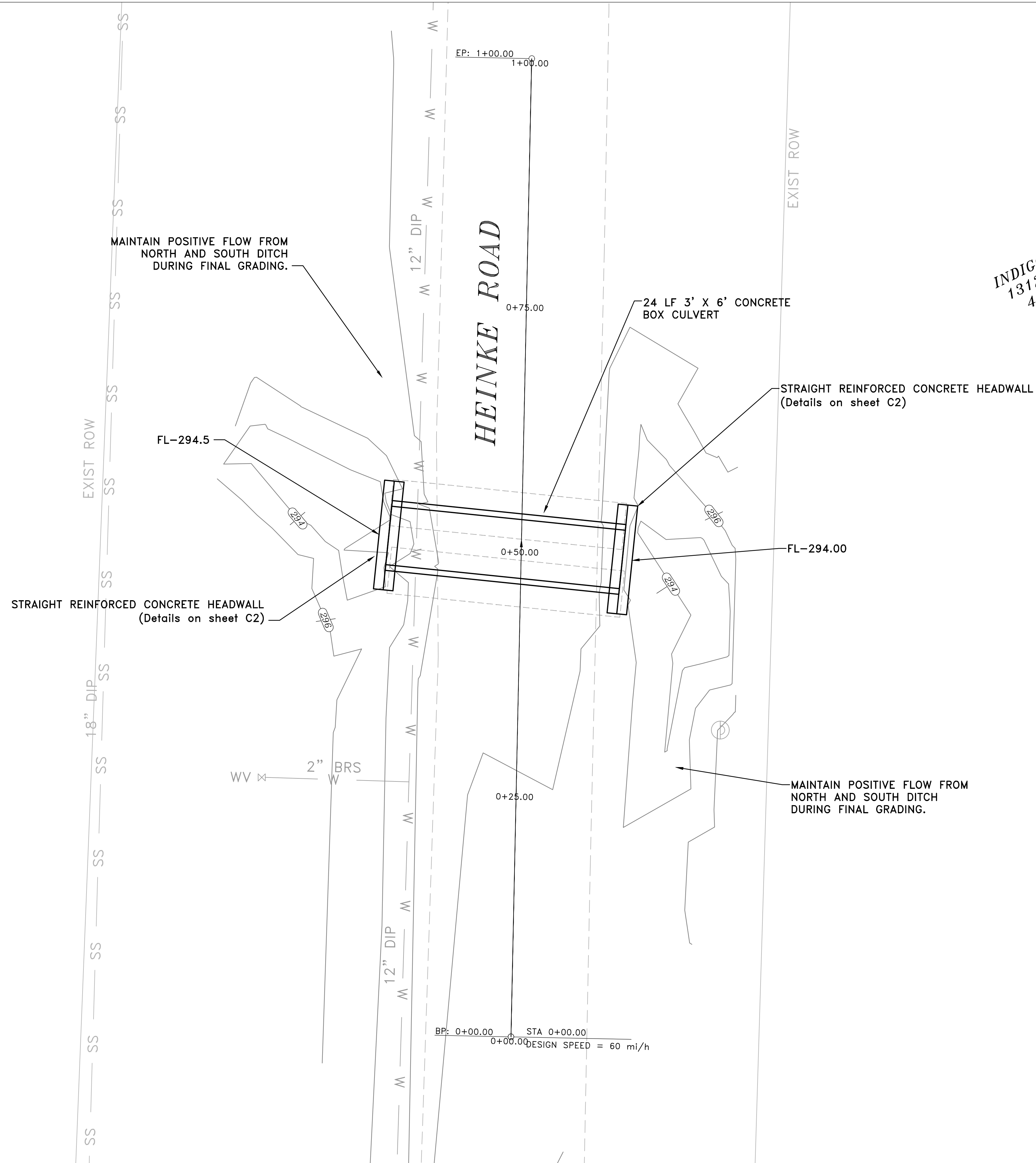
DEPARTMENT OF PUBLIC WORKS  
CIVIL ENGINEERING  
701 W. MARKHAM  
LITTLE ROCK, ARKANSAS 72201



DRAWN BY  
VH  
DESIGNED  
VH  
CHECKED  
DH  
DATE  
1/2/2024  
SCALE  
1" = 6'  
PROJECT NO.  
SHEET NO.  
**C3**

CYNTHIA FAYNE  
45L0890005000

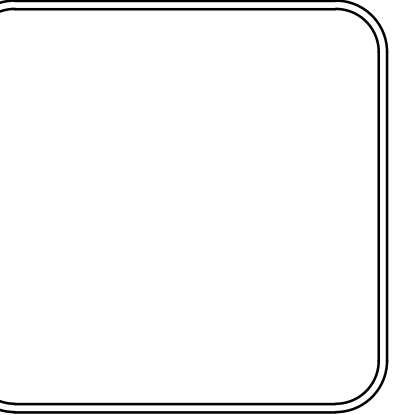
INDIGO PROPERTIES  
13125 HEINKE RD  
45L0880005580



REVISIONS	DATE

CITY OF LITTLE ROCK, ARKANSAS  
HEINKE ROAD DRAINAGE  
PLAN VIEW

DEPARTMENT OF PUBLIC WORKS  
CIVIL ENGINEERING  
701 W. MARKHAM  
LITTLE ROCK, ARKANSAS 72201



DRAWN BY VH
DESIGNED VH
CHECKED DH
DATE 1/2/2024
SCALE 1" = 6'
PROJECT NO.
SHEET NO. C4

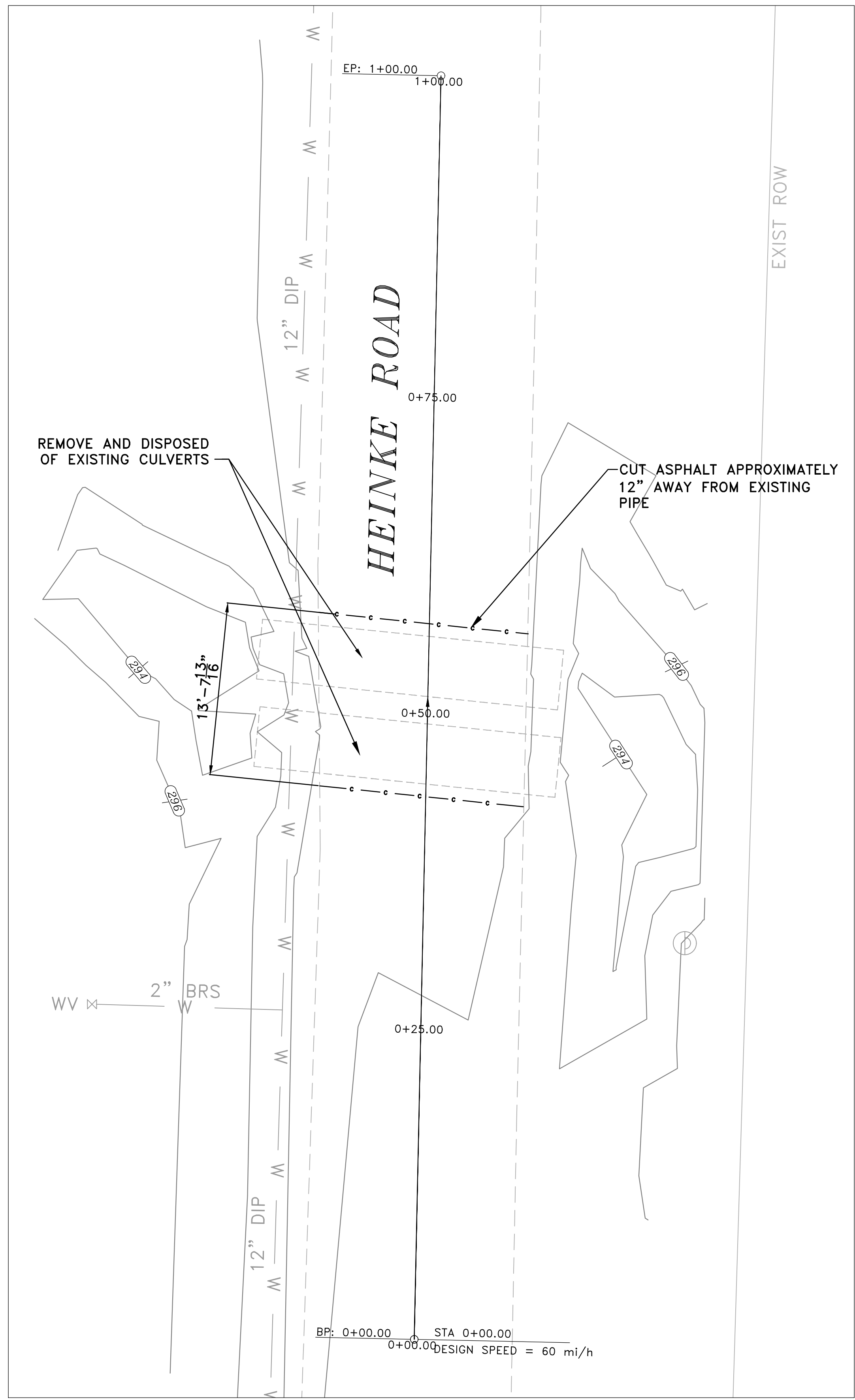
REVISIONS	DATE

CITY OF LITTLE ROCK, ARKANSAS  
HEINKE ROAD DRAINAGE  
DEMOLITION AND ASPHALT PLAN

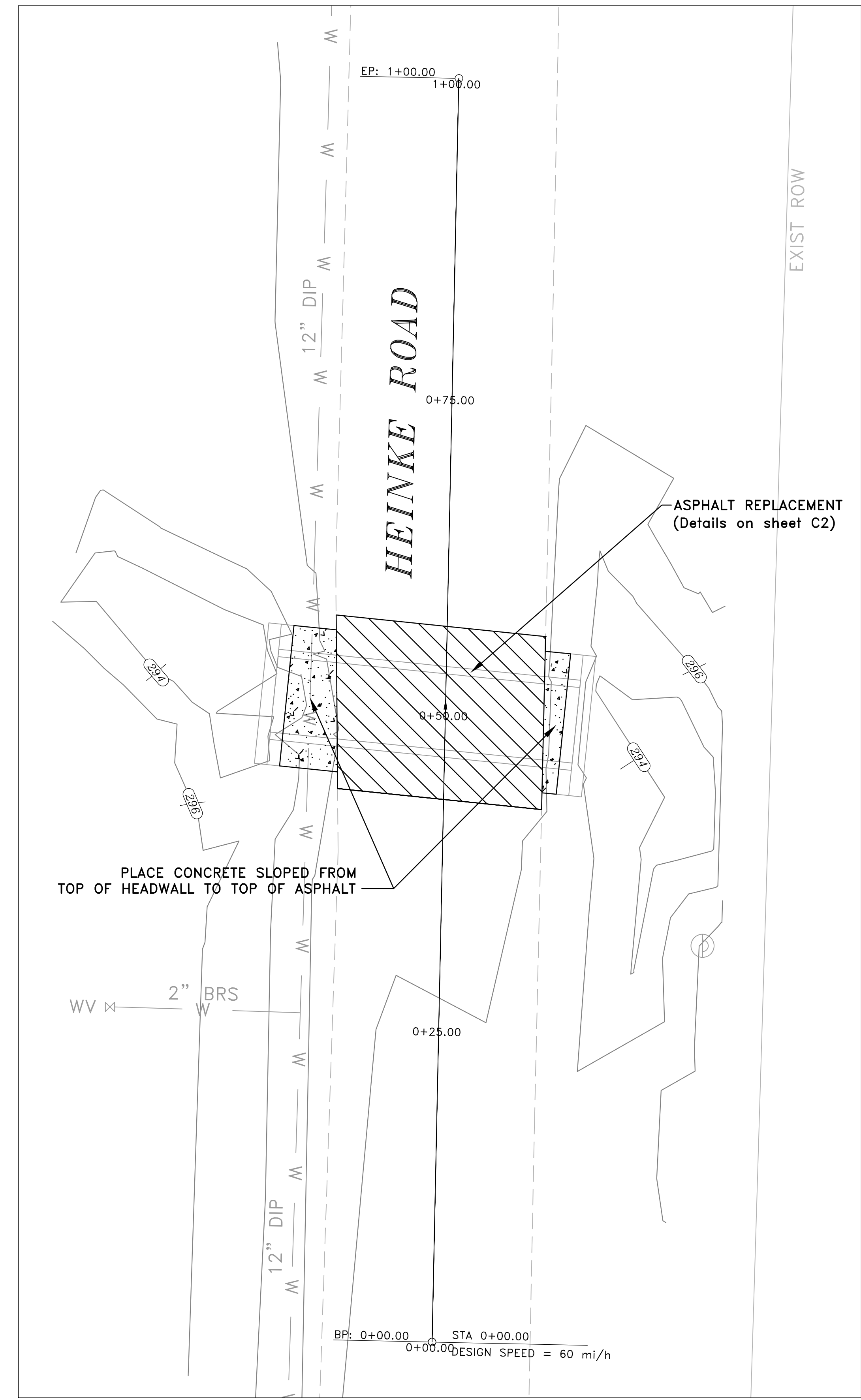
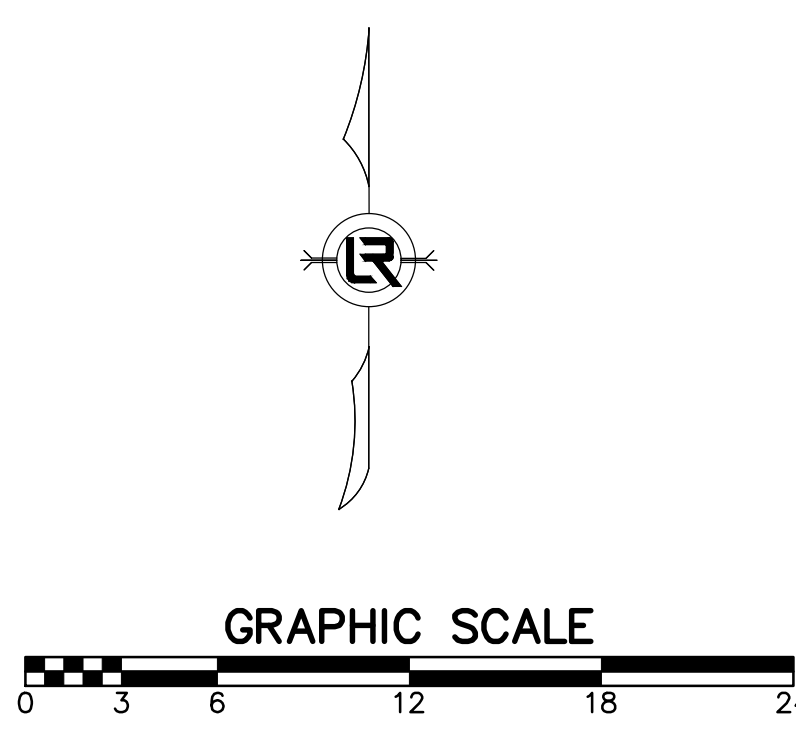
DEPARTMENT OF PUBLIC WORKS  
CIVIL ENGINEERING  
701 W. MARKHAM  
LITTLE ROCK, ARKANSAS 72201



DRAWN BY  
VH  
DESIGNED  
VH  
CHECKED  
DH  
DATE  
1/2/2024  
SCALE  
1" = 6'  
PROJECT NO.  
SHEET NO.  
C5



DEMOLITION PLAN



ASPHALT REPAIRS

REVISIONS	DATE

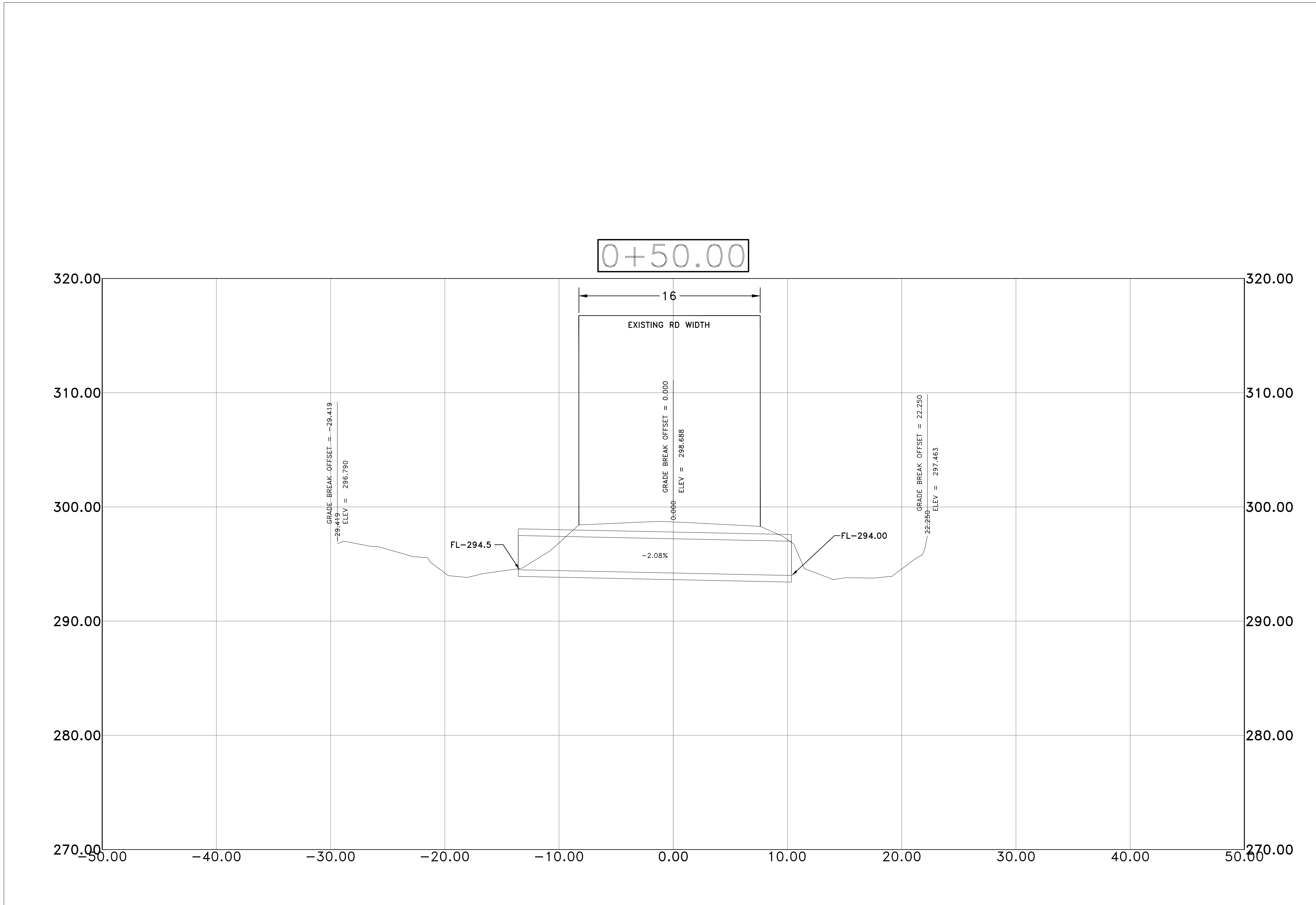
CITY OF LITTLE ROCK, ARKANSAS  
HEINKE ROAD DRAINAGE  
CROSS SECTION

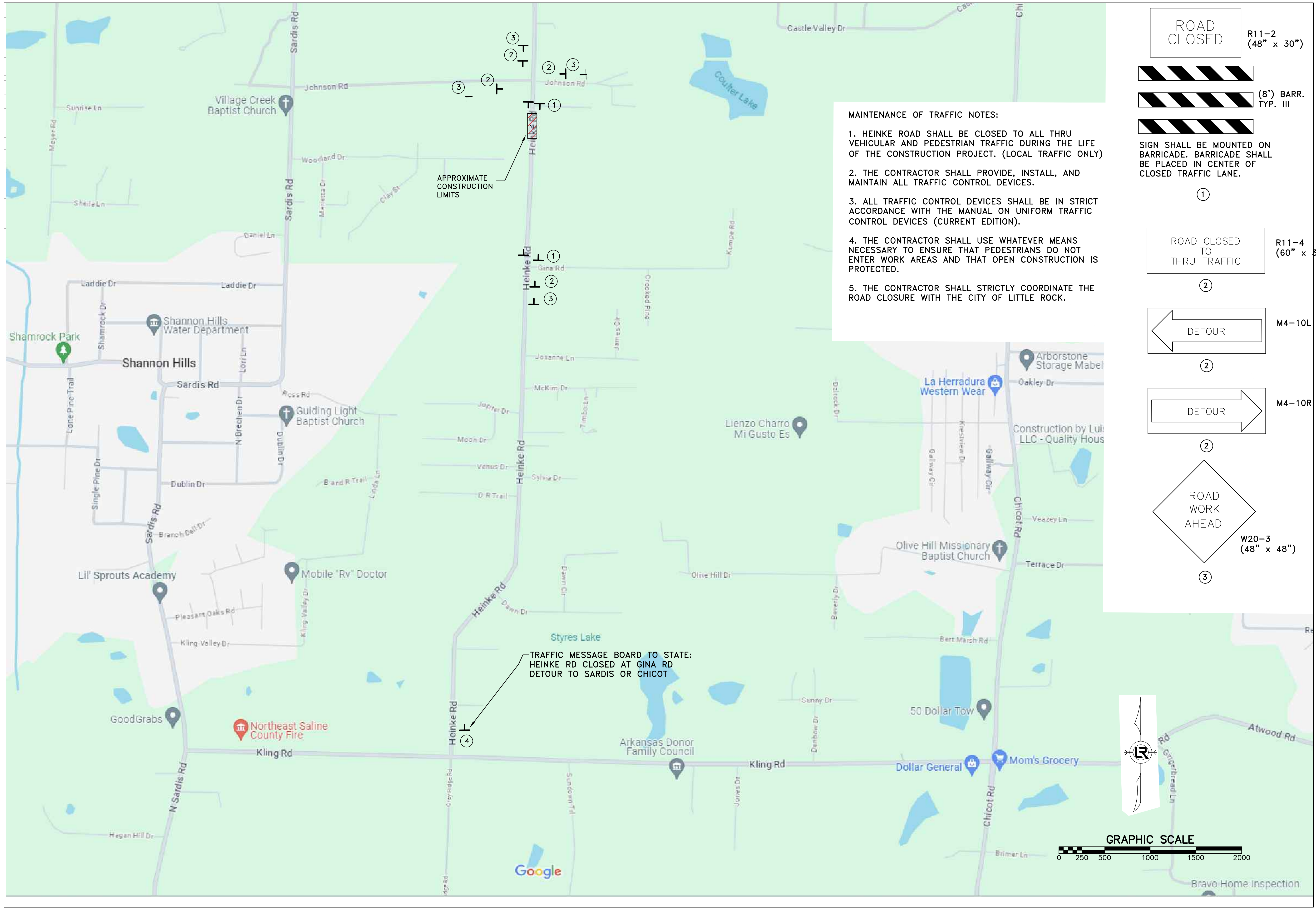
DEPARTMENT OF PUBLIC WORKS  
CIVIL ENGINEERING  
701 W. MARKHAM  
LITTLE ROCK, ARKANSAS 72201



ENGINEER  
STAMP

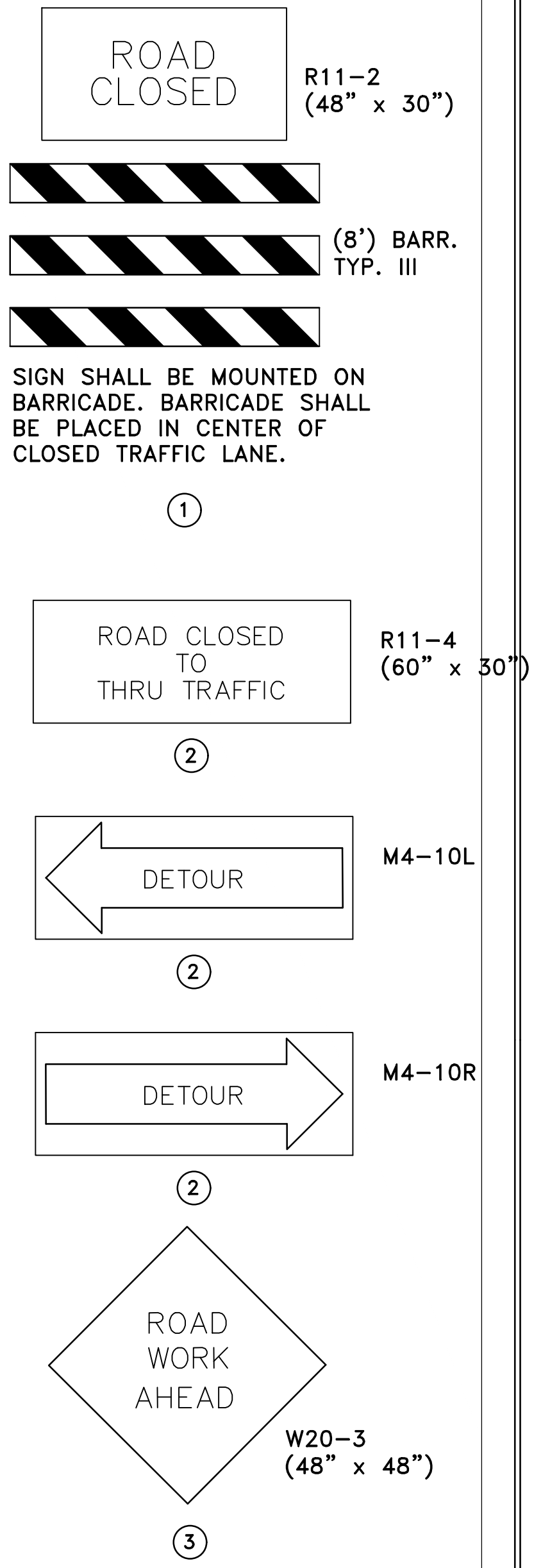
DRAWN BY  
VH  
DESIGNED  
VH  
CHECKED  
DH  
DATE  
1/2/2024  
SCALE  
1" = 6'  
PROJECT NO.  
SHEET NO.  
C6



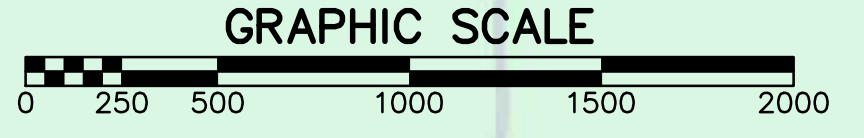


**MAINTENANCE OF TRAFFIC NOTES:**

1. HEINKE ROAD SHALL BE CLOSED TO ALL THRU VEHICULAR AND PEDESTRIAN TRAFFIC DURING THE LIFE OF THE CONSTRUCTION PROJECT. (LOCAL TRAFFIC ONLY)
2. THE CONTRACTOR SHALL PROVIDE, INSTALL, AND MAINTAIN ALL TRAFFIC CONTROL DEVICES.
3. ALL TRAFFIC CONTROL DEVICES SHALL BE IN STRICT ACCORDANCE WITH THE MANUAL ON UNIFORM TRAFFIC CONTROL DEVICES (CURRENT EDITION).
4. THE CONTRACTOR SHALL USE WHATEVER MEANS NECESSARY TO ENSURE THAT PEDESTRIANS DO NOT ENTER WORK AREAS AND THAT OPEN CONSTRUCTION IS PROTECTED.
5. THE CONTRACTOR SHALL STRICTLY COORDINATE THE ROAD CLOSURE WITH THE CITY OF LITTLE ROCK.



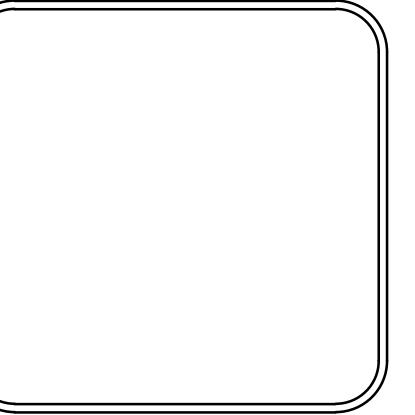
TRAFFIC MESSAGE BOARD TO STATE:  
HEINKE RD CLOSED AT GINA RD  
DETOUR TO SARDIS OR CHICOT



REVISIONS	DATE

CITY OF LITTLE ROCK, ARKANSAS  
HEINKE ROAD DRAINAGE  
MAINTENANCE OF TRAFFIC

DEPARTMENT OF PUBLIC WORKS  
CIVIL ENGINEERING  
701 W. MARKHAM  
LITTLE ROCK, ARKANSAS 72201



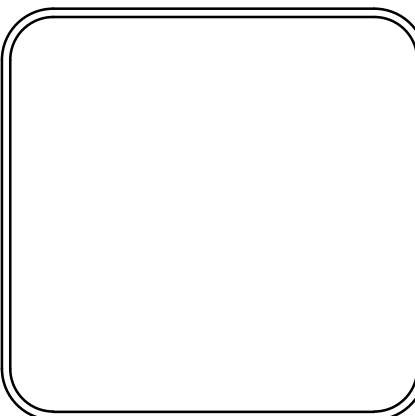
**DRAWN BY**  
VH  
**DESIGNED**  
VH  
**CHECKED**  
DH  
**DATE**  
1/2/2024  
**SCALE**  
1" = 500'  
**PROJECT NO.**  
  
**SHEET NO.**  
C7



REVISIONS	DATE

CITY OF LITTLE ROCK, ARKANSAS  
 HEINKE RD DRAINAGE  
 TEMPORARY CONSTRUCTION EASEMENT EXHIBIT NO. 01

DEPARTMENT OF PUBLIC WORKS  
 CIVIL ENGINEERING  
 701 W. MARKHAM  
 LITTLE ROCK, ARKANSAS 72201



DRAWN BY  
 FV  
 DESIGNED  
 VH  
 CHECKED  
 VH  
 DATE  
 3/25/2024  
 SCALE  
 1" = 10'  
 PROJECT NO.  
 SHEET NO.  
 01