



Public Meeting to Make 7th Street Complete

MAY 26, 2016

Why Complete Streets?

To Accommodate All Users



Allow Cheaper Transportation Options

- ▶ Car
 - ▶ \$8946/year
- ▶ Rock Region Metro
 - ▶ 31-day Adult pass
 - ▶ \$36/month
 - ▶ \$432/year
- ▶ Bike
 - ▶ \$308/year



Increase Safety

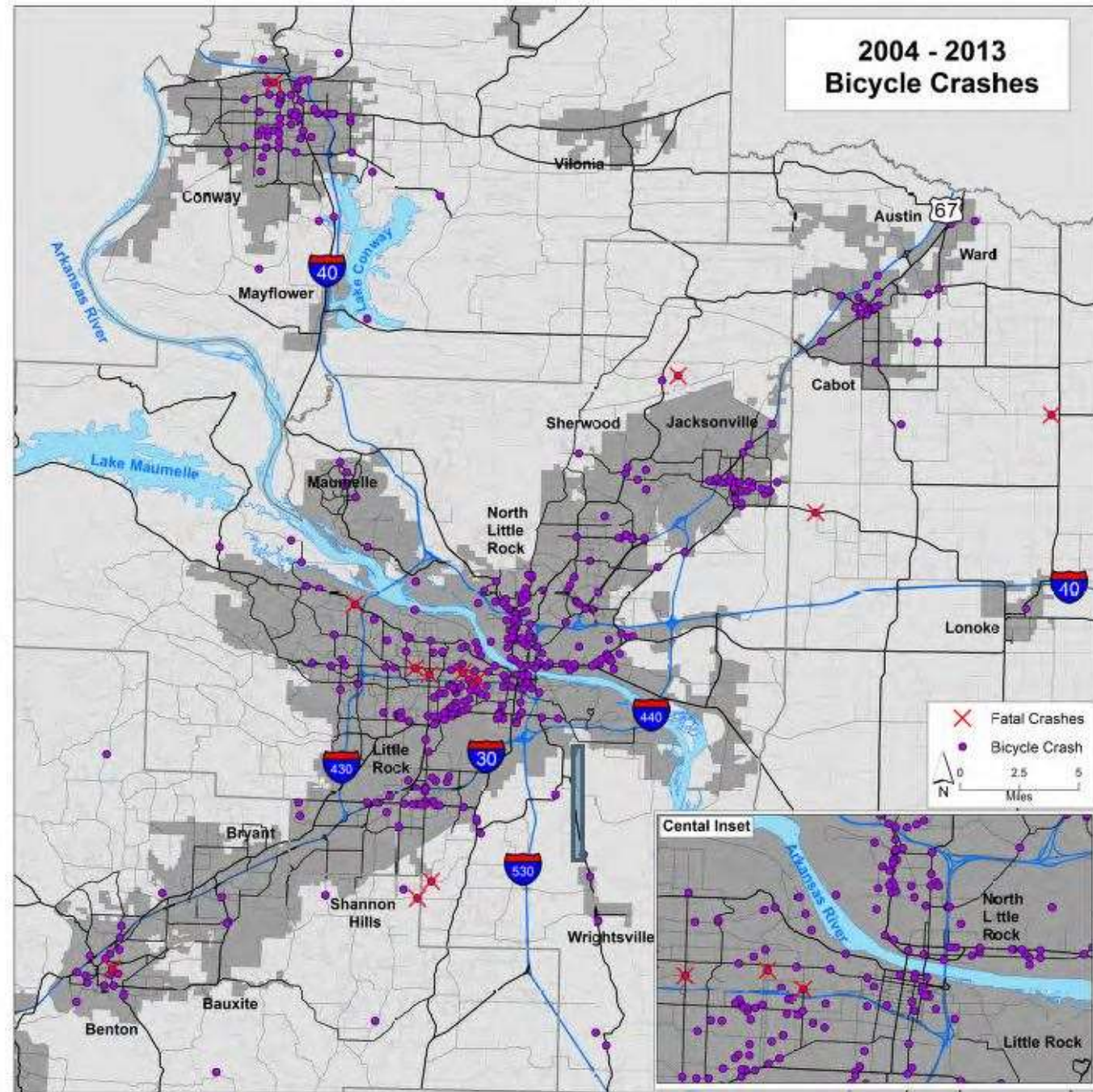


Figure 2: Bicycle Crashes 2004 - 2013

Public Health

- ▶ Obesity
 - ▶ High blood pressure
 - ▶ Heart disease
 - ▶ Diabetes
 - ▶ Cancer
- ▶ Arkansas most obese state
- ▶ Active transportation shown to take weight off and keep it off
 - ▶ Bike commuters lose on average 13 lbs. in their first year.

Current adult obesity rate (2014)

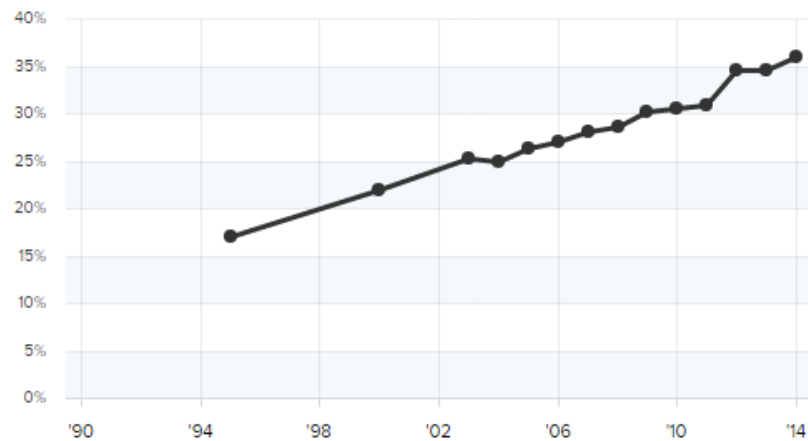
35.9%

Rank among states (2014)

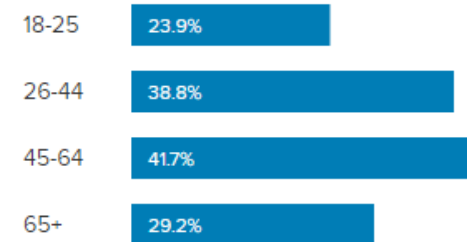
1

/51

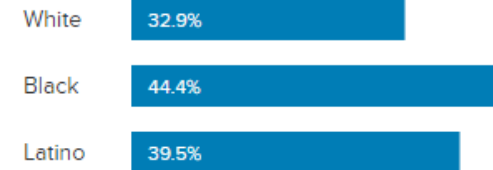
Adult obesity rate in Arkansas (1990-2014)



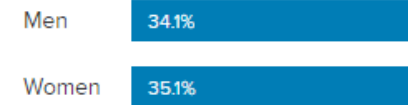
Obesity rate by age (2014)



Obesity rate by race (2014)



Obesity rate by gender (2012)



Economic Vitality: Young Talent



- ▶ Millennials looking for livable cities
- ▶ Complete Streets part of livability
- ▶ Attract and retain
 - ▶ businesses
 - ▶ good citizens

Little Rock Committed



Why 7th Street?

Revitalizing 7th Street Corridor



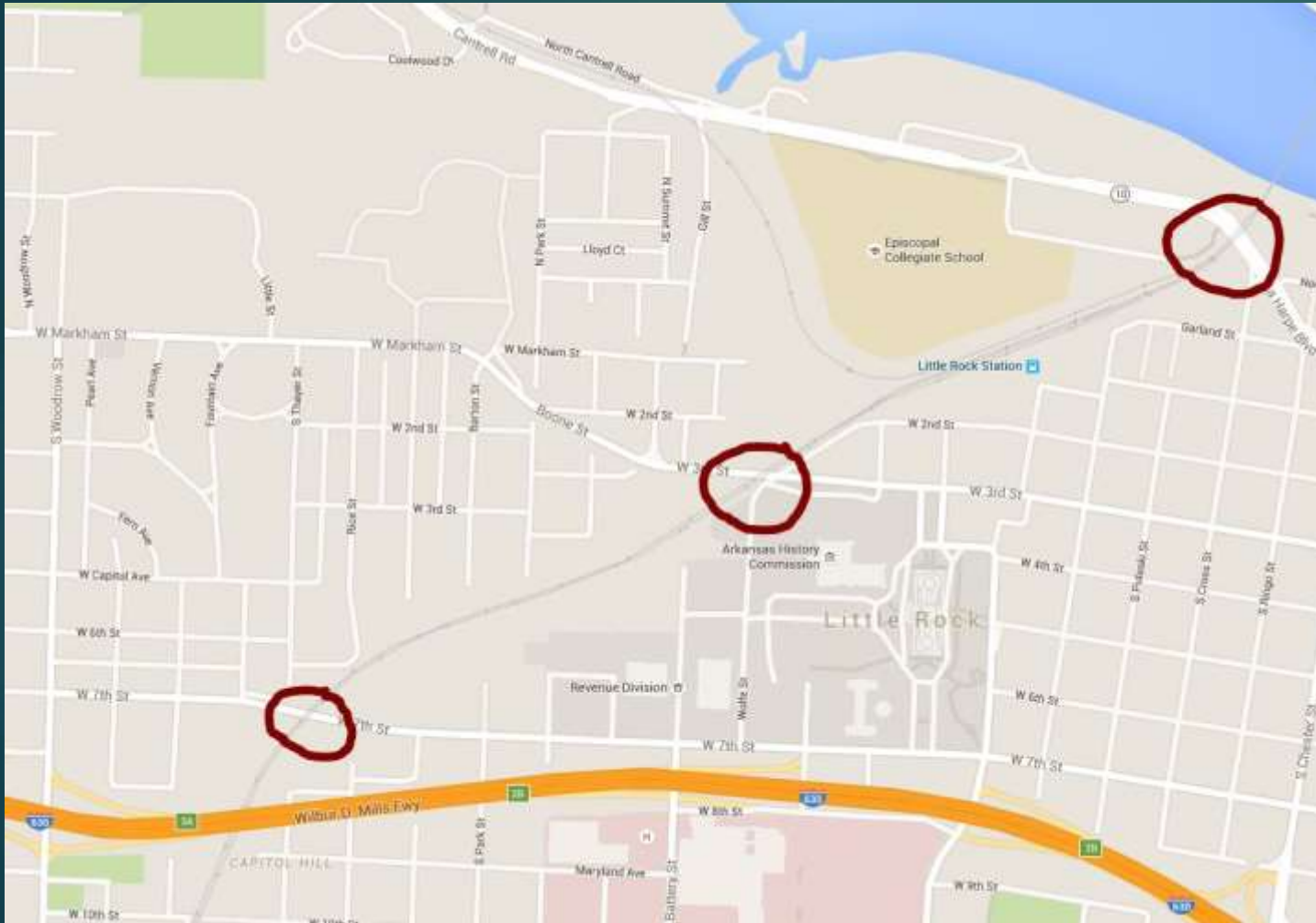
Pop Up in the Rock 2013



Vacant storefront between Gaines and Arch.

- ▶ Livable neighborhood
 - ▶ Walkable
 - ▶ Safer
 - ▶ Community walking the streets
 - ▶ Destination vs. corridor
 - ▶ People come and spend money
 - ▶ Better advertising
 - ▶ More people on more transportation modes travelling slower
- ▶ Create Little Rock may have specific design improvements in mind
 - ▶ SOMA district

The Importance of 7th Street



Three ways to cross railroad between river and I-630.

- ▶ Rail line makes east-west connectivity challenging
- ▶ Three ways to cross railroad
 - ▶ LaHarpe
 - ▶ 3rd Street
 - ▶ 7th Street
- ▶ New BikePed bridge by LaHarpe (ART) will create 4th

See also April 15th post on Facebook's Bike/Ped Little Rock

Thoughts of Business Owners

Broadway to Arch



- ▶ Bumper to Bumper's Willie Eustice
 - ▶ Concerned about
 - ▶ Speed of traffic
 - ▶ Visibility coming out of parking lot onto 7th
 - ▶ Some cars back out
 - ▶ Will this be part of Arkansas River Trail?

- ▶ ARG moved out



Arch to Gaines



- ▶ First Missionary Baptist Church's Senior Deacon D.W.B Stokes
 - ▶ Concerned about losing two handicapped spots on 7th Street
 - ▶ Bus parks there with a parishioner who has a particularly difficult time walking.

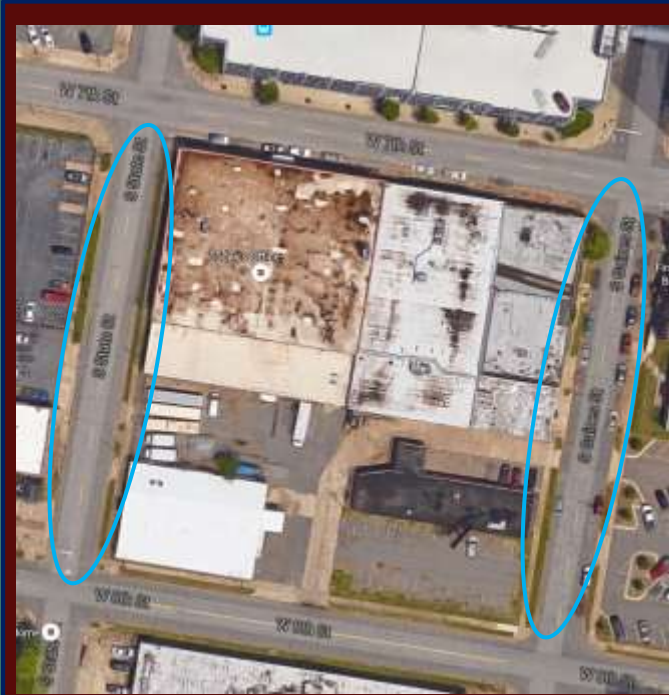
Potential solutions:

- 1) Make two spots on Gaines handicapped parking only. Only nominally farther.
- 2) Drop off parishioner at handicapped ramp on 7th then park bus in Gaines handicapped parking, Gaines street parking, or lot.

Gaines to State



- ▶ Today's Office's Tamara Campbell
 - ▶ Happy that Today's Office, particularly the new banner, may get more views.
 - ▶ Concerned about parking where cars can be seen.



Parking on State St. and Gaines St. between 7th and 8th available and underutilized.

Solution:

- 1) Create livable neighborhood.
- 2) Install security camera on State between 7th and 8th



- ▶ Haybar Real Estate's Lauren Frederick
 - ▶ Concerned about loss of parking.



State to Izard



- ▶ 7th Street Tattoos and Piercing's Robert Berry
 - ▶ Concerned about loss of parking
 - ▶ Excited enough about bike lanes to
 - ▶ Renegotiate his contract with Army Corps of Engineers
 - ▶ Take back spots he leases on his parking lot
 - ▶ Lose revenue from leasing those spots
- ▶ 7th Street Tattoos and Piercing's Ashley Berry
 - ▶ Glad that removal of street parking will improve visibility turning onto 7th
 - ▶ Excited about environmental impact of biking lanes



Izard to Chester



- ▶ Arkansas Department of Career Education's Rick Anderson
 - ▶ Happy that resurfacing has already made street more handicapped accessible
 - ▶ Would like to see better handicapped waiting area at bus stop
 - ▶ Excited that people recovering from injury will see people living an active lifestyle – inspirational



- ▶ Vino's
 - ▶ Employees excited to ride to work safer
 - ▶ Excited to attract bicyclist cliental



Izard to Chester 2



- ▶ Southern Reprographics' Phillip McColey
 - ▶ Likes to see safe biking options in Little Rock
 - ▶ Concerned about loss of street parking
 - ▶ Particularly relating to customer easy pick up and drop off of drafts



Solution: Convert spots on Izard to 15 minute loading and unloading



- ▶ Art Outfitters' Kerry Kemp
 - ▶ Excited about bike lanes
 - ▶ Happy that loss of street parking will help reduce parking in front of her gate after hours
 - ▶ Employees excited to bike to work
 - ▶ Happy that street parking will not interfere with her semi-weekly deliveries in front of her business

Station 801



- ▶ Positioning itself to be a destination for bicyclists
- ▶ Excited about the prospect of a bicycle corridor established a block away

Parking Capacity and Use

7TH STREET



Arvest Bank

W 6th St

W 7th St

W 7th St

W 8th St

W 8th St

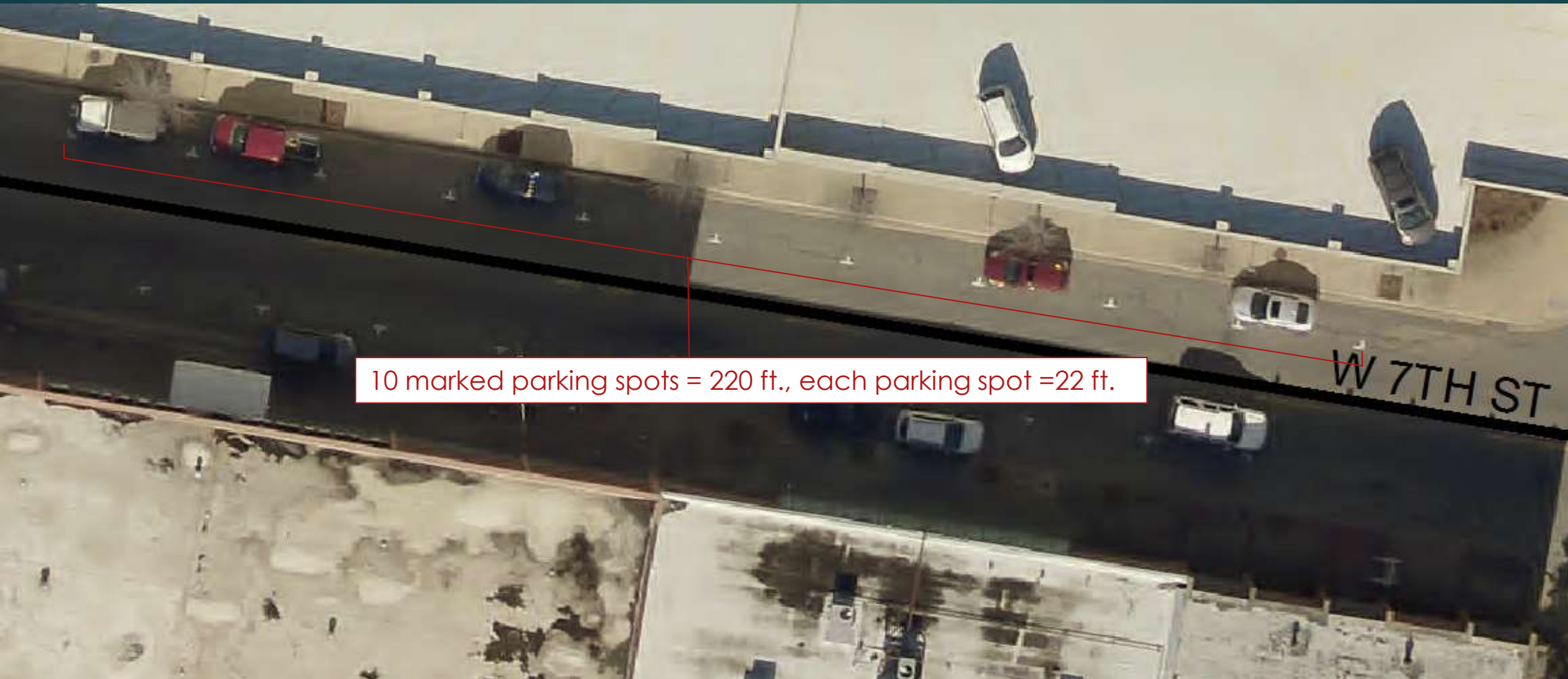
W 8th St

Chester St

Rally's

365 Mc

How much linear space per parking spot?



Corridor Capacity

Capacity:
Current = 240 spaces
7th Street removed = 174



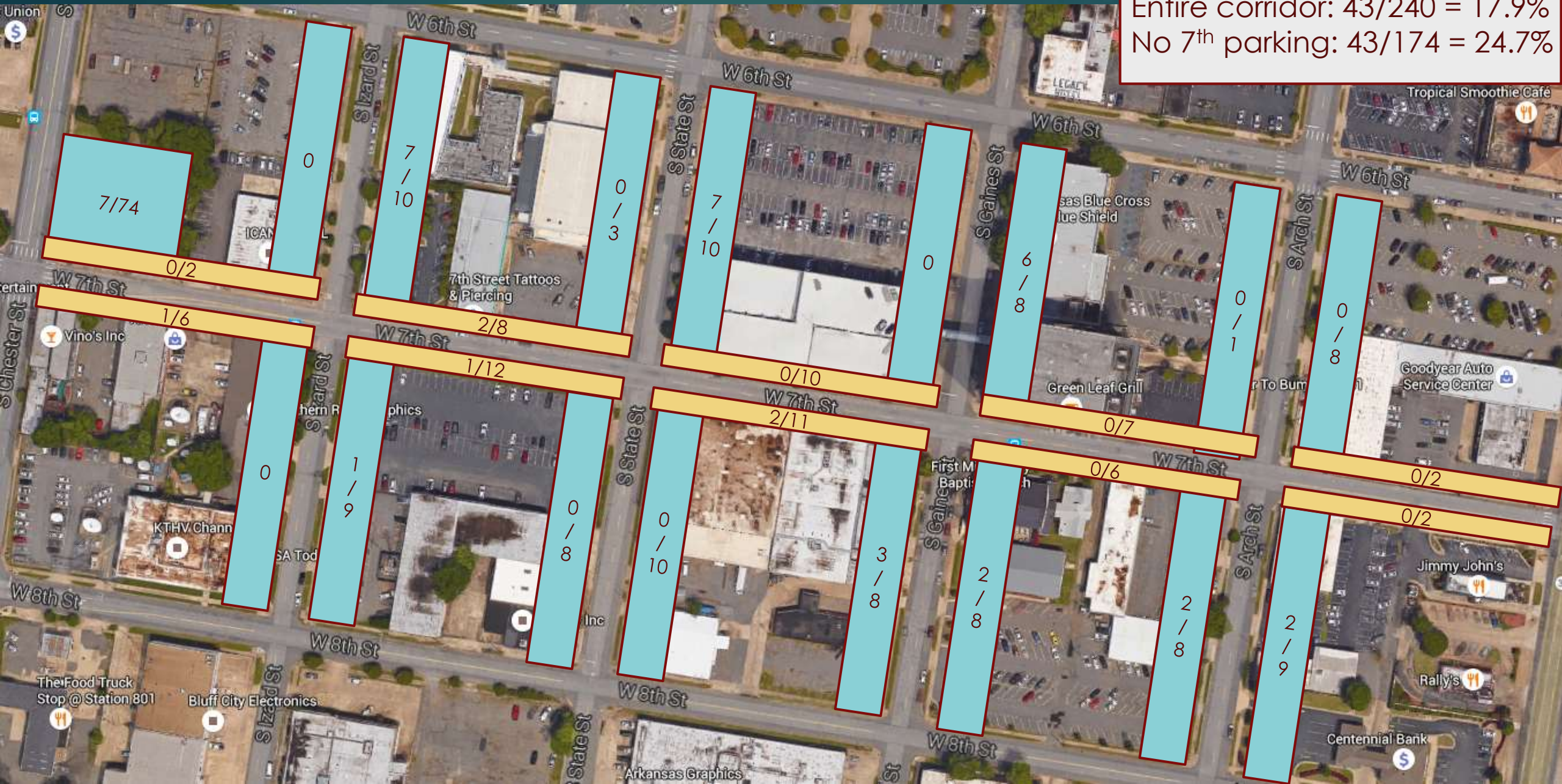
Thursday May 5th 2:00pm

Legend:
Used/Capacity
Entire corridor: 56/240 = 23.3%
No 7th parking: 56/174 = 32.2%



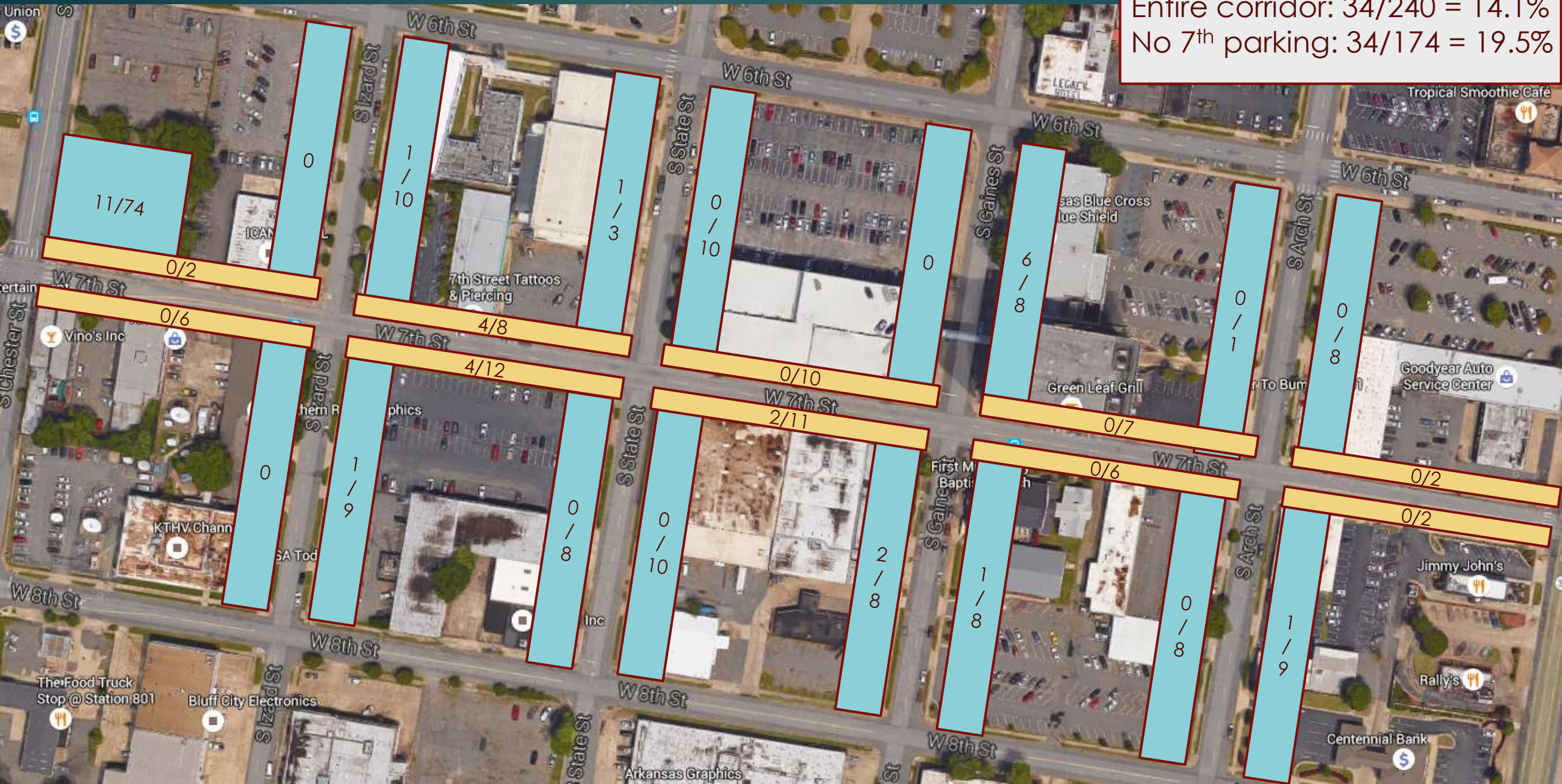
Tuesday May 10th 11:00am

Legend:
Used/Capacity
Entire corridor: 43/240 = 17.9%
No 7th parking: 43/174 = 24.7%



Friday May 13th 4:30pm

Legend:
Used/Capacity
Entire corridor: 34/240 = 14.1%
No 7th parking: 34/174 = 19.5%



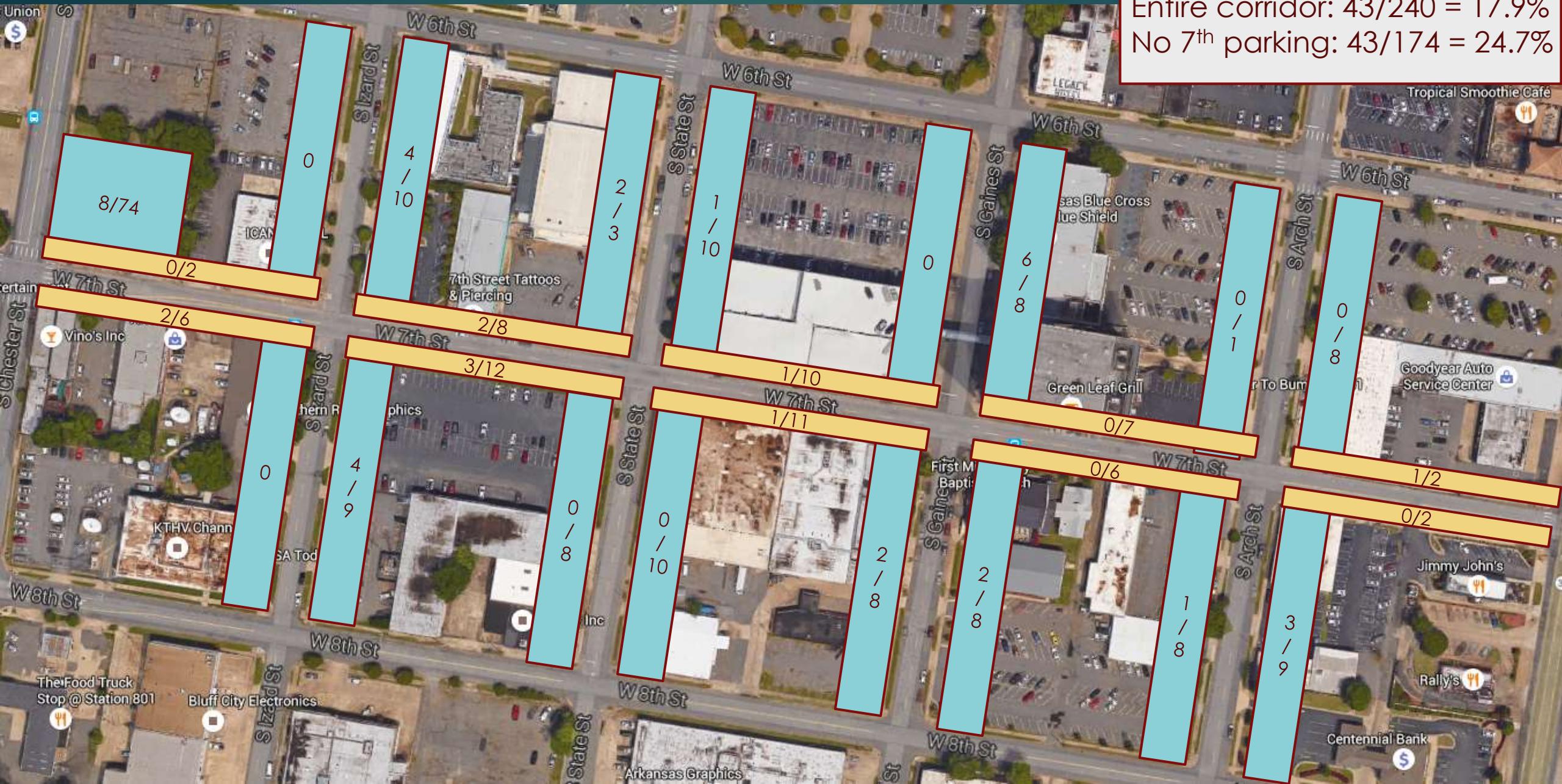
Tuesday May 17th 2:15pm

Legend:
Used/Capacity
Entire corridor: 62/240 = 25.8%
No 7th parking: 62/174 = 35.6%



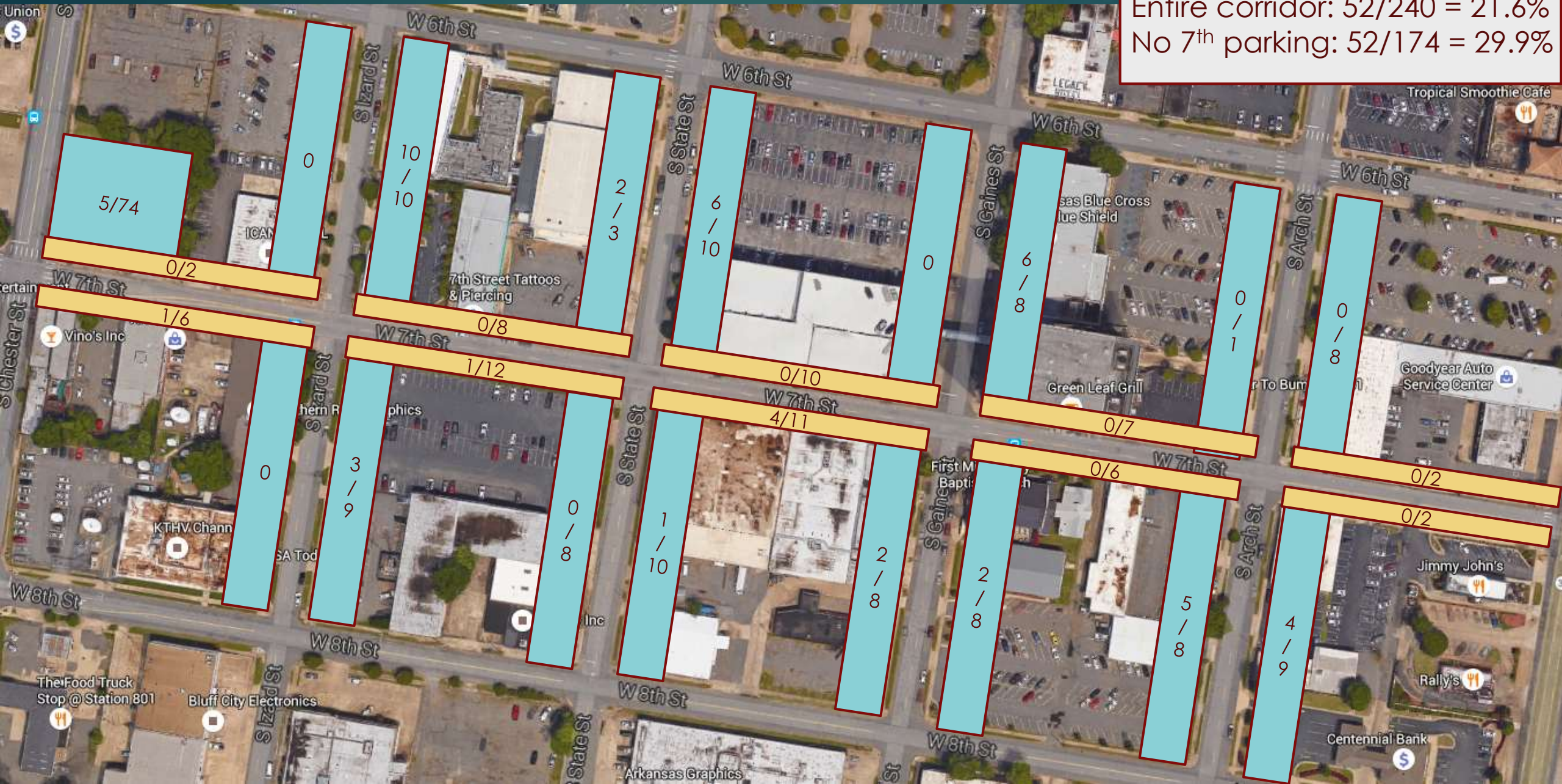
Wednesday May 18th 3:40pm

Legend:
Used/Capacity
Entire corridor: 43/240 = 17.9%
No 7th parking: 43/174 = 24.7%



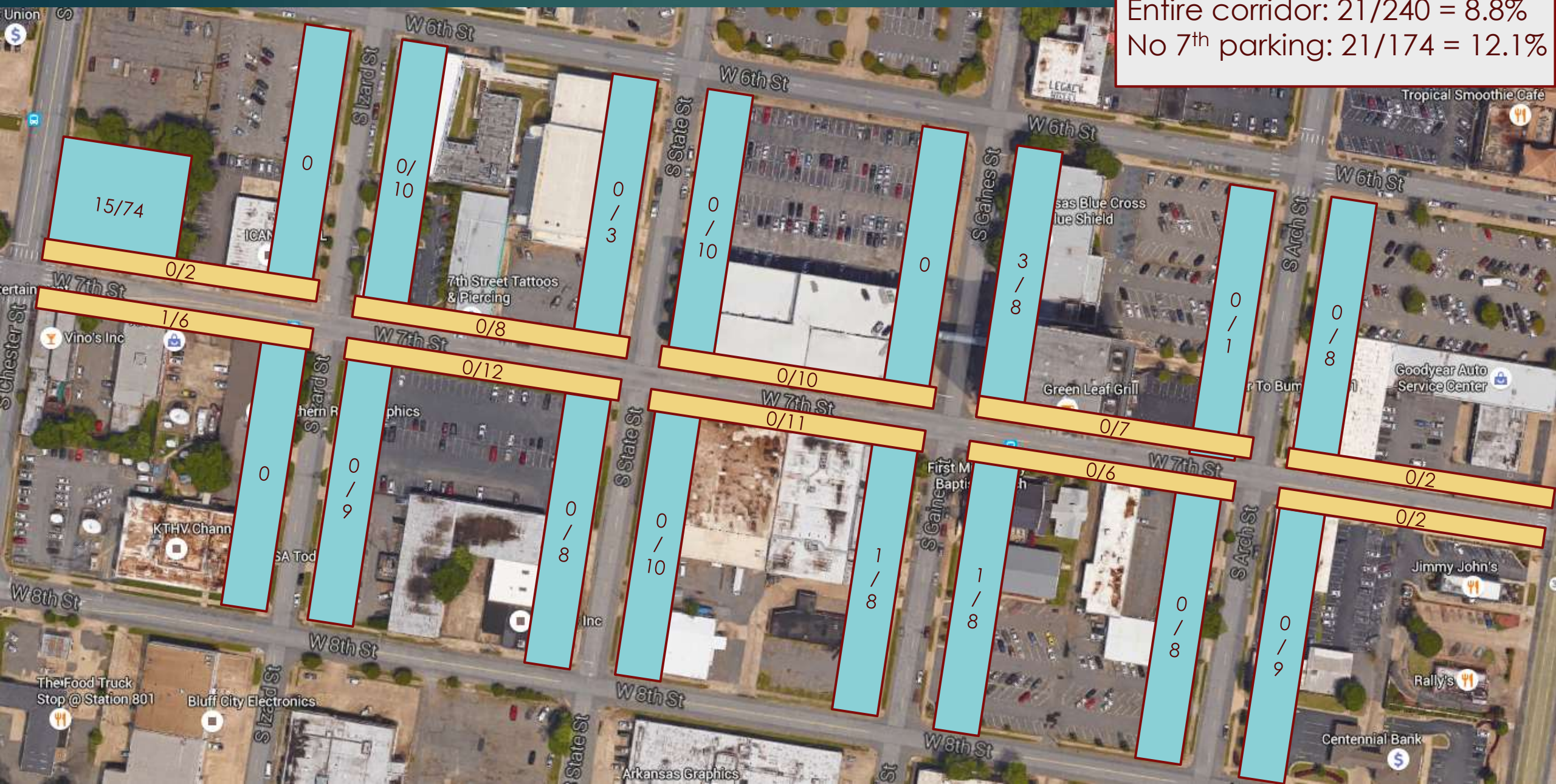
Thursday May 19th 10:00am

Legend:
Used/Capacity
Entire corridor: 52/240 = 21.6%
No 7th parking: 52/174 = 29.9%



Sunday May 22nd 1:00pm

Legend:
 Used/Capacity
 Entire corridor: 21/240 = 8.8%
 No 7th parking: 21/174 = 12.1%



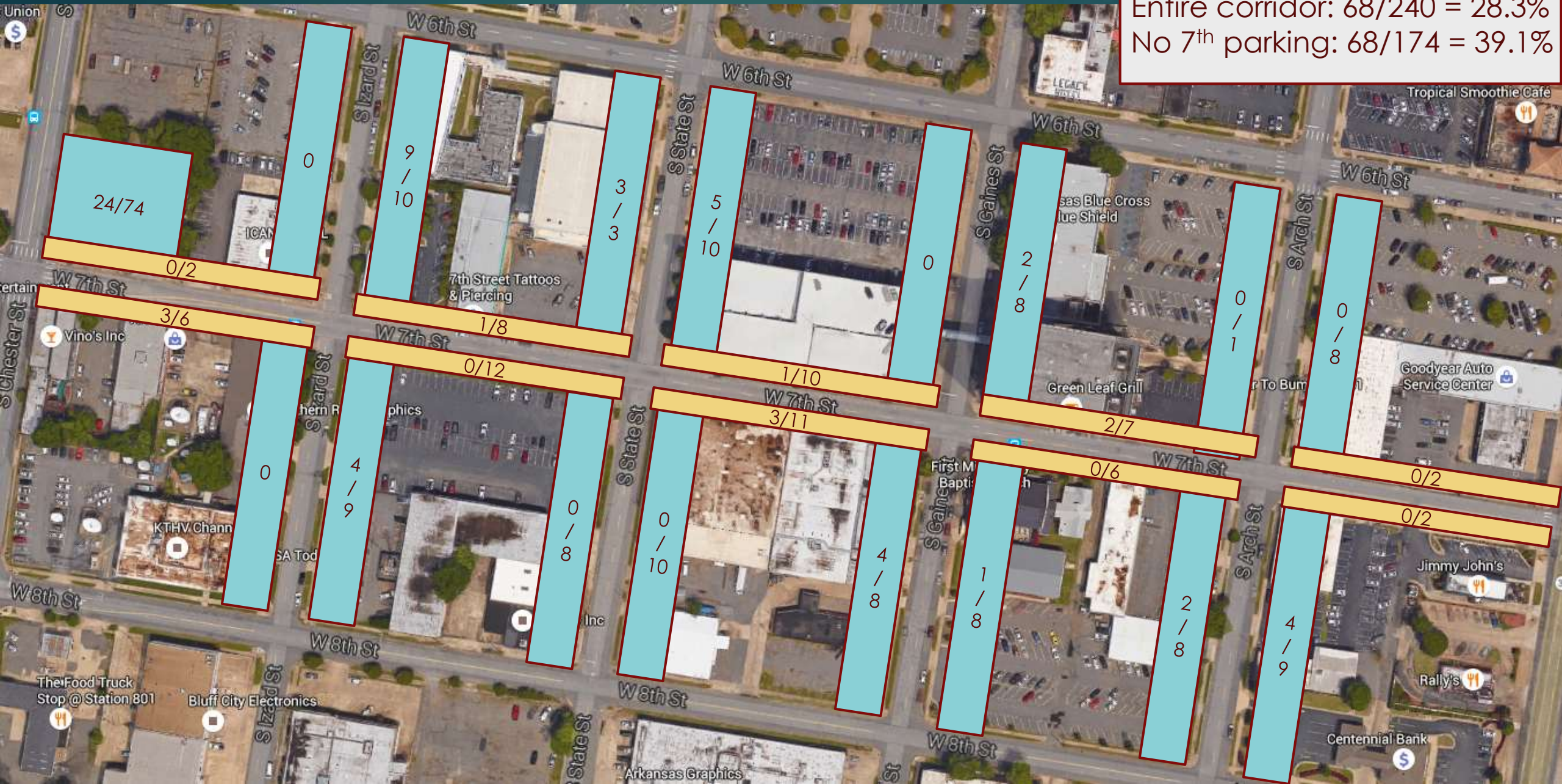
Monday May 23rd 1:00pm

Legend:
Used/Capacity
Entire corridor: 52/240 = 29.1%
No 7th parking: 52/174 = 40.2%



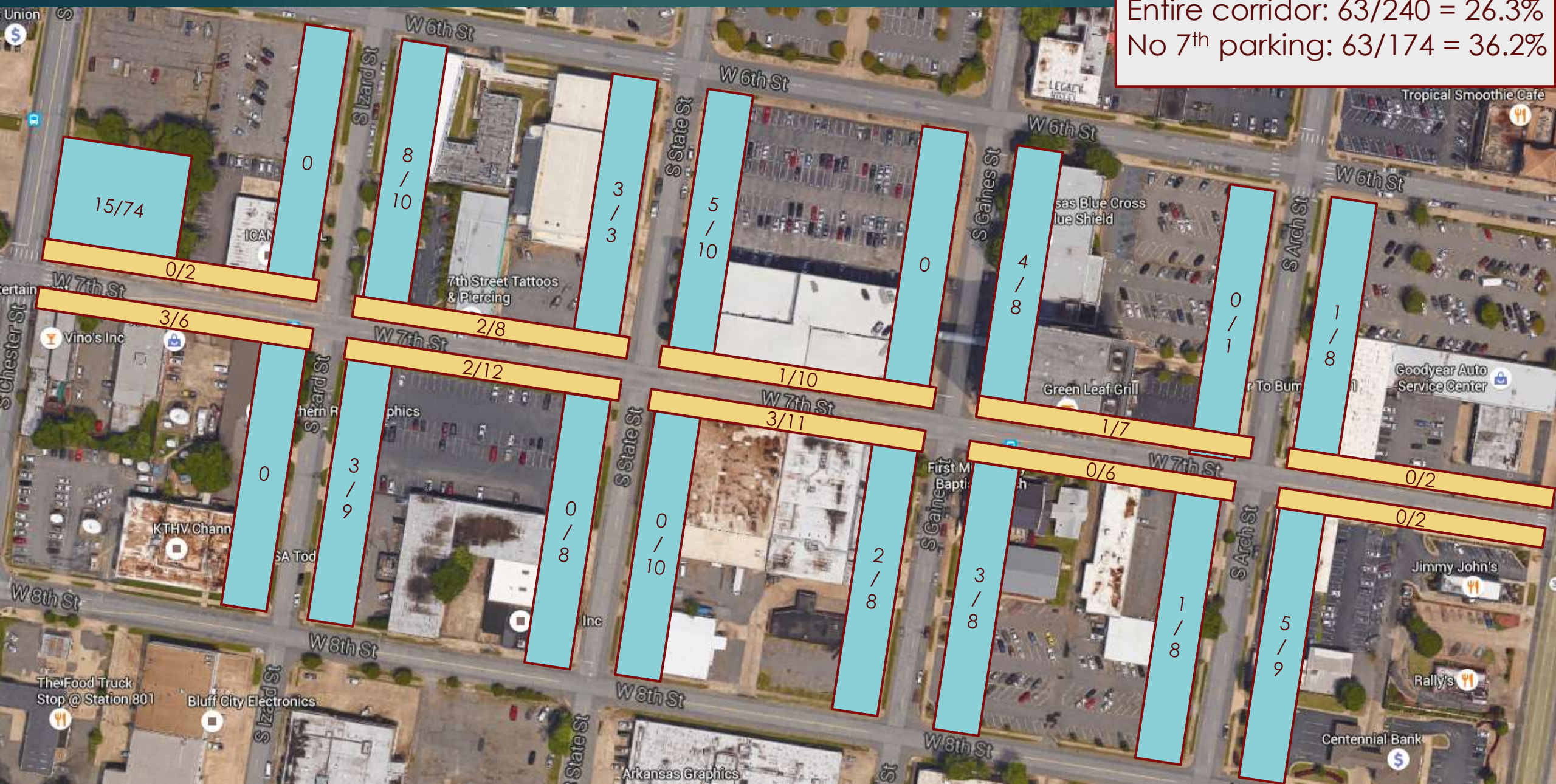
Tuesday May 24th 11:00am

Legend:
Used/Capacity
Entire corridor: 68/240 = 28.3%
No 7th parking: 68/174 = 39.1%



Tuesday May 24th 2:15pm

Legend:
Used/Capacity
Entire corridor: 63/240 = 26.3%
No 7th parking: 63/174 = 36.2%

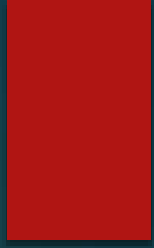


Wednesday May 25th 2:30pm

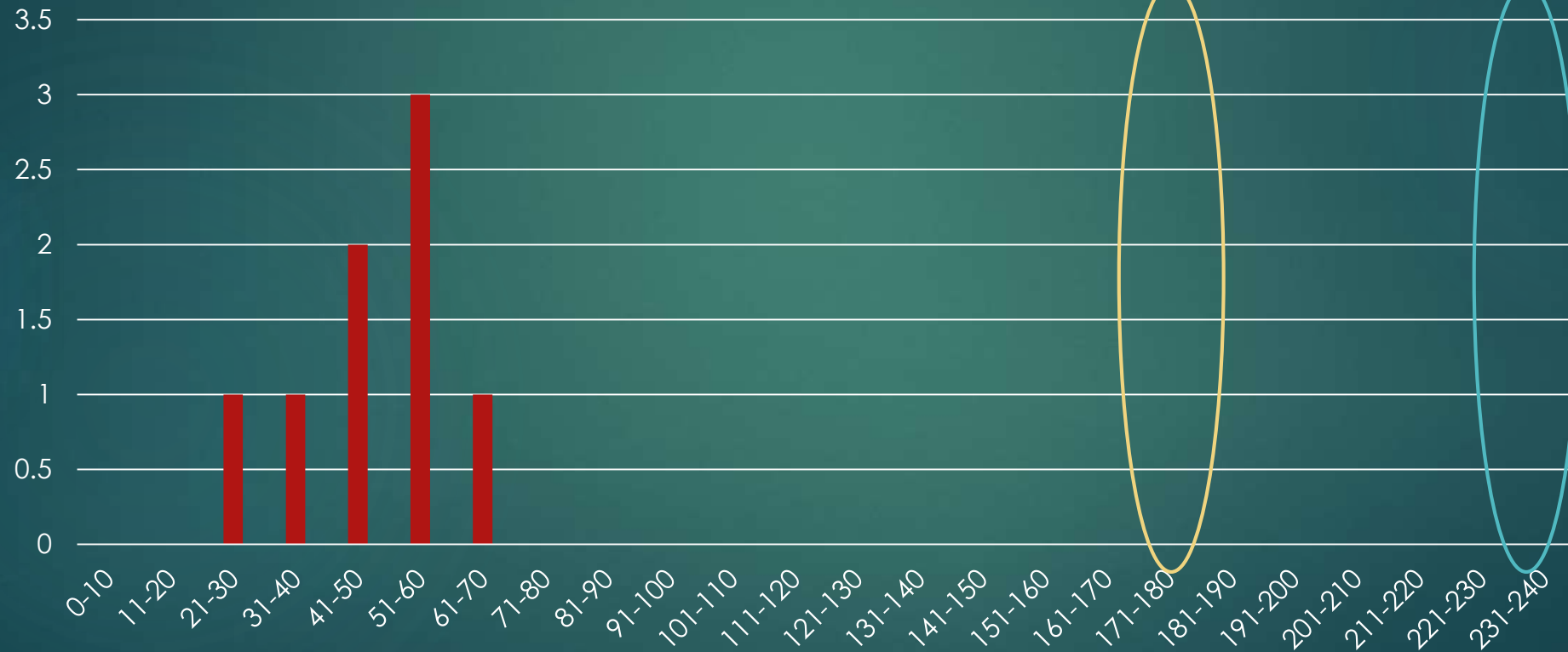
Legend:
Used/Capacity
Entire corridor: 62/240 = 51.7%
No 7th parking: 62/174 = 35.6%



Parking Use: 7th Street Corridor



Histogram of Parking Use





Parking Capacity and Use

CHESTER TO IZARD

Chester to Izard Capacity

Capacity:
Current = 101 spaces
7th Street removed = 93



Businesses Affected:
VINO's
Art Outfitters
Southern Reprographics
Arkansas Department of Career Education

Thursday May 5th 2:00pm

Legend:
Used/Capacity
Chester-Izard: 21/101 = 20.8%
No 7th parking: 21/93 = 22.6%



Tuesday May 10th 11:00am

Legend:
Used/Capacity
Chester-Izard: 16/101 = 15.8%
No 7th parking: 16/93 = 17.2%



Friday May 13th 4:30pm

Legend:
Used/Capacity
Chester-Izard: 13/101 = 15.8%
No 7th parking: 13/93 = 17.2%



Tuesday May 17th 2:15pm

Legend:
Used/Capacity
Chester-Izard: 32/101 = 31.7%
No 7th parking: 32/93 = 34.4%



Wednesday May 18th 3:40pm

Legend:
Used/Capacity
Chester-Izard: 18/101 = 17.8%
No 7th parking: 18/93 = 19.4%



Thursday May 19th 10:00am

Legend:
Used/Capacity
Chester-Izard: 19/101 = 18.8%
No 7th parking: 19/93 = 20.4%



Monday May 23rd 1:00pm

Legend:
Used/Capacity
Chester-Izard: 33/101 = 32.7%
No 7th parking: 33/93 = 35.5%



Tuesday May 24th 11:00am

Legend:
Used/Capacity
Chester-Izard: 40/101 = 39.6%
No 7th parking: 40/93 = 43.0%



Tuesday May 24th 2:15pm

Legend:
Used/Capacity
Chester-Izard: 29/101 = 28.7%
No 7th parking: 29/93 = 31.2%

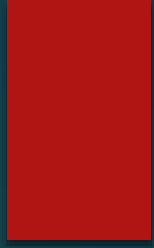


Wednesday May 25th 2:30pm

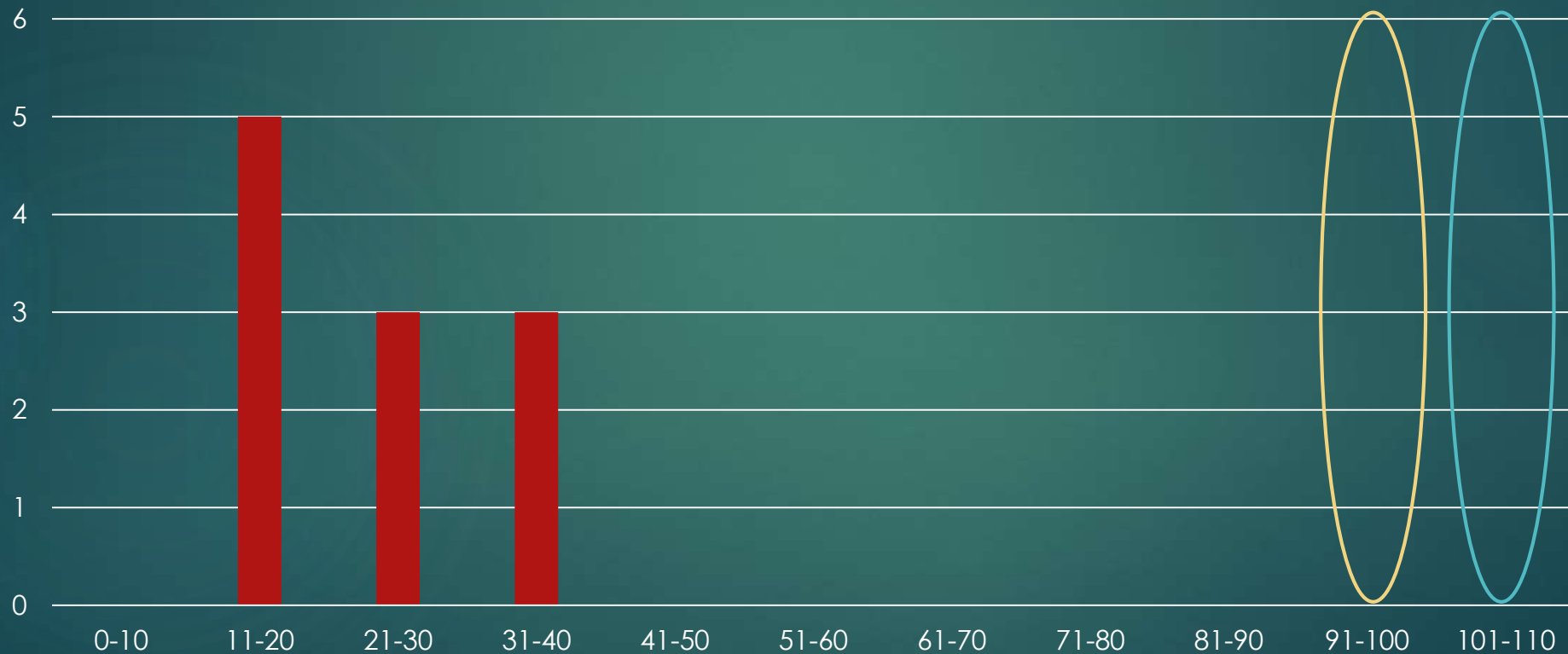
Legend:
Used/Capacity
Chester-Izard: 23/101 = 22.8%
No 7th parking: 23/93 = 24.7%



Parking Use: Chester to Izard



Histogram of Parking Use



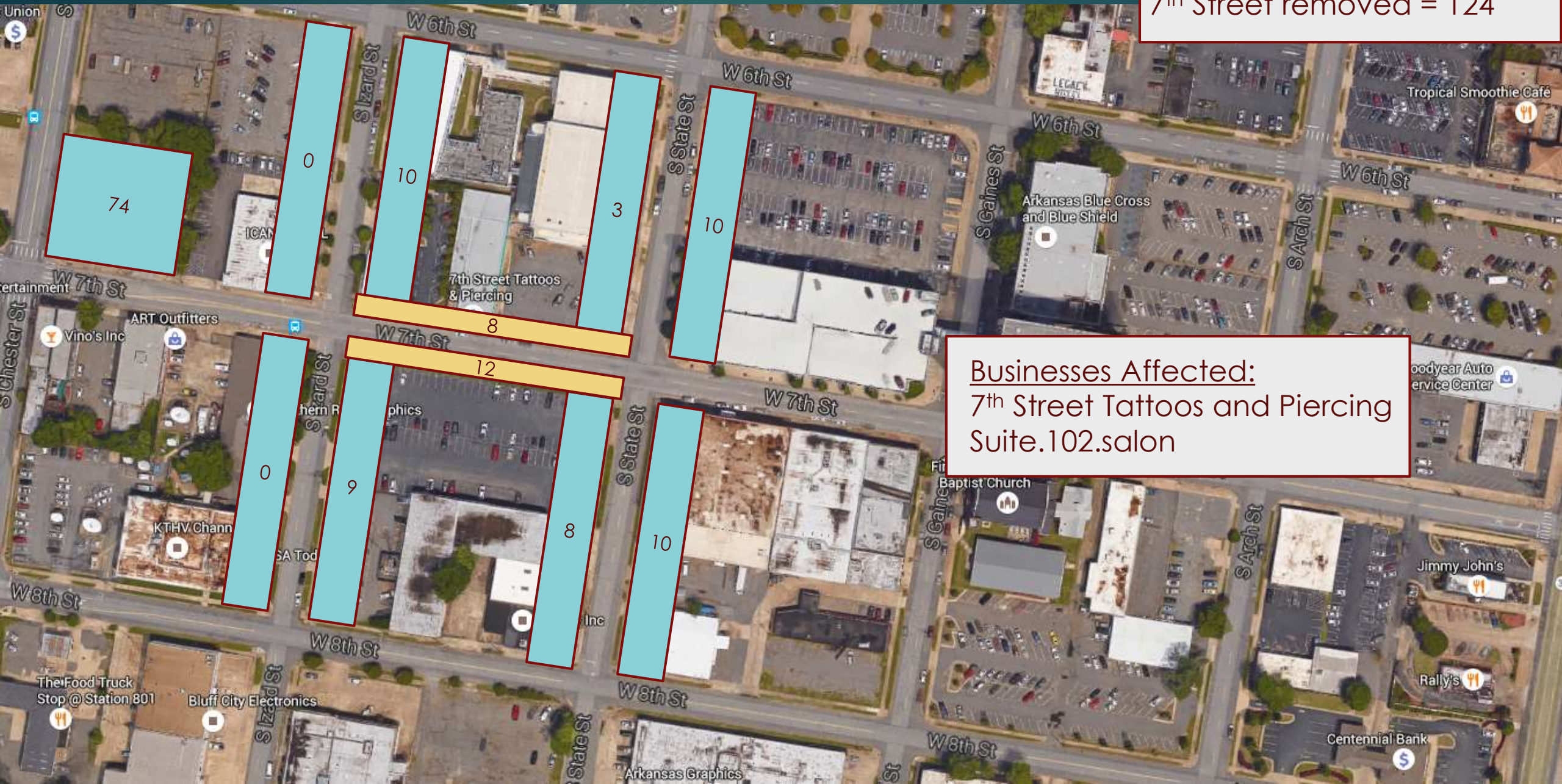


Parking Capacity and Use

IZARD TO STATE

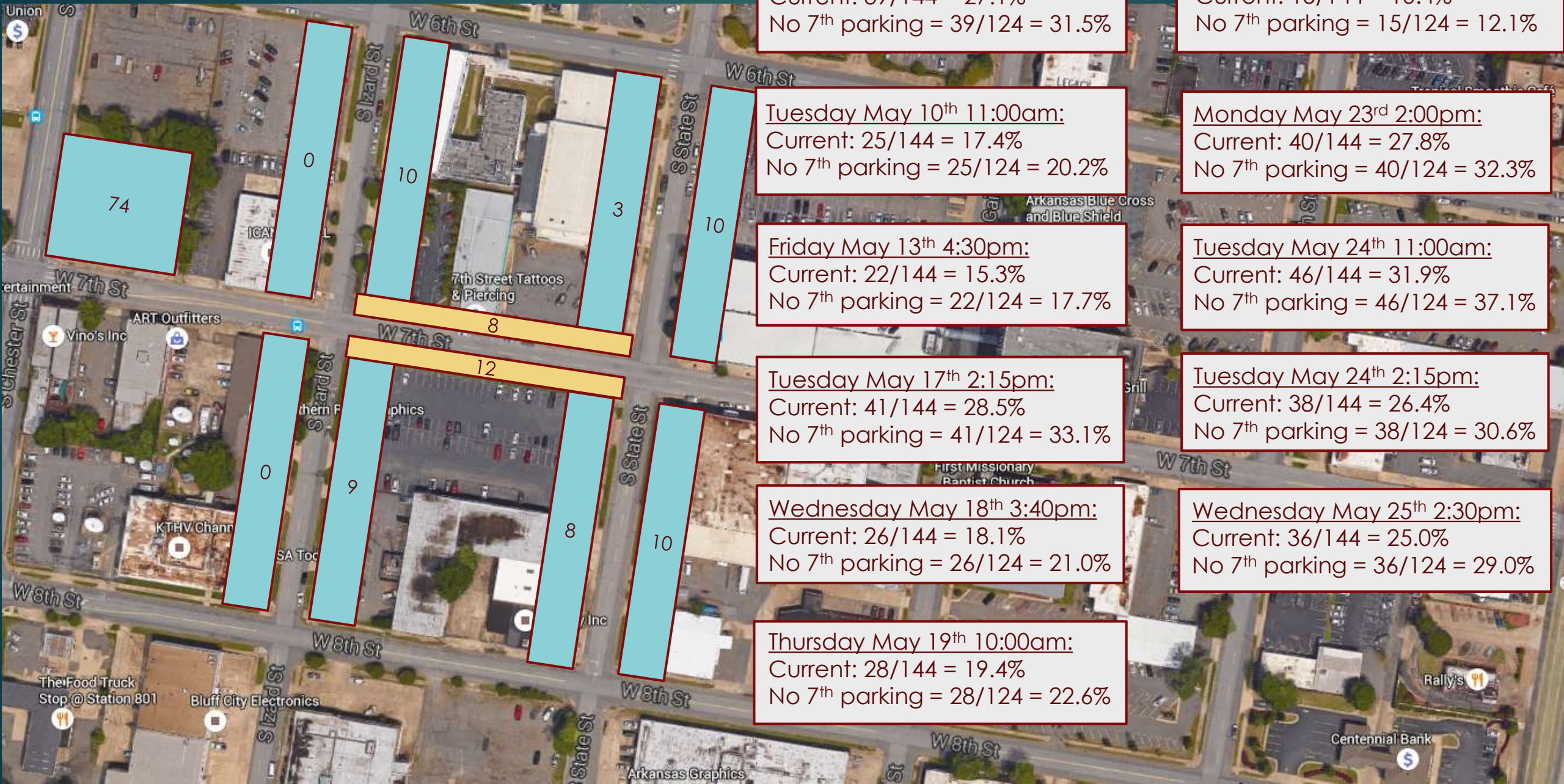
Izard-State Capacity

Capacity:
Current = 144 spaces
7th Street removed = 124



Businesses Affected:
7th Street Tattoos and Piercing
Suite.102.salon

Izard-State Use



Thursday May 5th 2:00pm:
 Current: 39/144 = 27.1%
 No 7th parking = 39/124 = 31.5%

Sunday May 22nd 1:00pm:
 Current: 15/144 = 10.4%
 No 7th parking = 15/124 = 12.1%

Tuesday May 10th 11:00am:
 Current: 25/144 = 17.4%
 No 7th parking = 25/124 = 20.2%

Monday May 23rd 2:00pm:
 Current: 40/144 = 27.8%
 No 7th parking = 40/124 = 32.3%

Friday May 13th 4:30pm:
 Current: 22/144 = 15.3%
 No 7th parking = 22/124 = 17.7%

Tuesday May 24th 11:00am:
 Current: 46/144 = 31.9%
 No 7th parking = 46/124 = 37.1%

Tuesday May 17th 2:15pm:
 Current: 41/144 = 28.5%
 No 7th parking = 41/124 = 33.1%

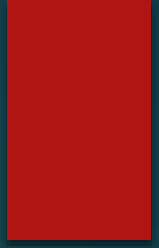
Tuesday May 24th 2:15pm:
 Current: 38/144 = 26.4%
 No 7th parking = 38/124 = 30.6%

Wednesday May 18th 3:40pm:
 Current: 26/144 = 18.1%
 No 7th parking = 26/124 = 21.0%

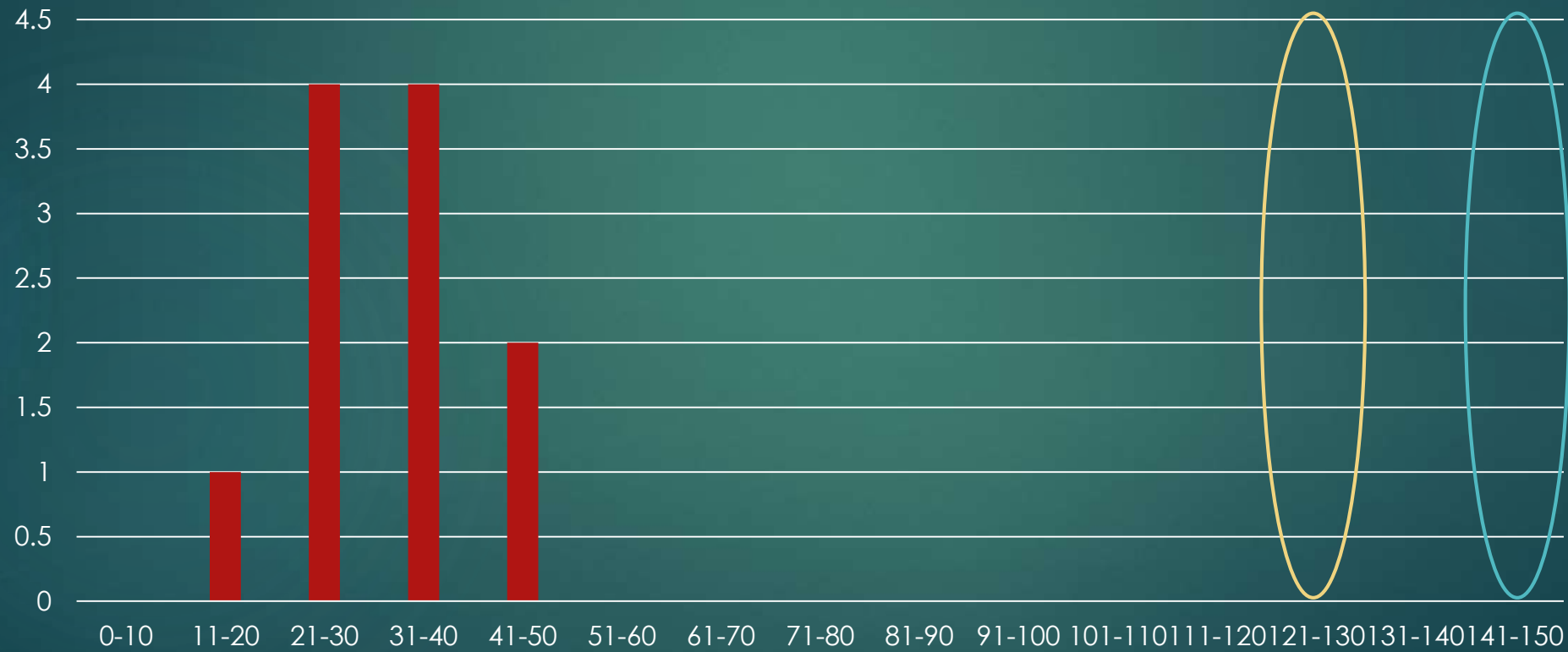
Wednesday May 25th 2:30pm:
 Current: 36/144 = 25.0%
 No 7th parking = 36/124 = 29.0%

Thursday May 19th 10:00am:
 Current: 28/144 = 19.4%
 No 7th parking = 28/124 = 22.6%

Parking Use: IZARD to State



Histogram of Parking Use





Parking Capacity and Use

STATE TO GAINES

State to Gaines Capacity

Capacity:
Current = 76 spaces
7th Street removed = 55

Businesses Affected:
Today's Office
Hosto and Buchan PLLC
Haybar Real Estate



State to Gaines Use

Thursday May 5th 2:00pm:
Current: 22/76 = 28.9%
No 7th parking = 22/55 = 40.0%

Tuesday May 10th 11:00am:
Current: 20/76 = 26.3%
No 7th parking = 20/55 = 36.4%

Friday May 13th 4:30pm:
Current: 12/76 = 15.8%
No 7th parking = 12/55 = 21.8%

Tuesday May 17th 2:15pm:
Current: 17/76 = 22.4%
No 7th parking = 17/55 = 30.9%

Wednesday May 18th 3:40pm:
Current: 15/76 = 19.7%
No 7th parking = 15/55 = 27.3%

Thursday May 19th 10:00am:
Current: 23/76 = 30.3%
No 7th parking = 23/55 = 41.8%

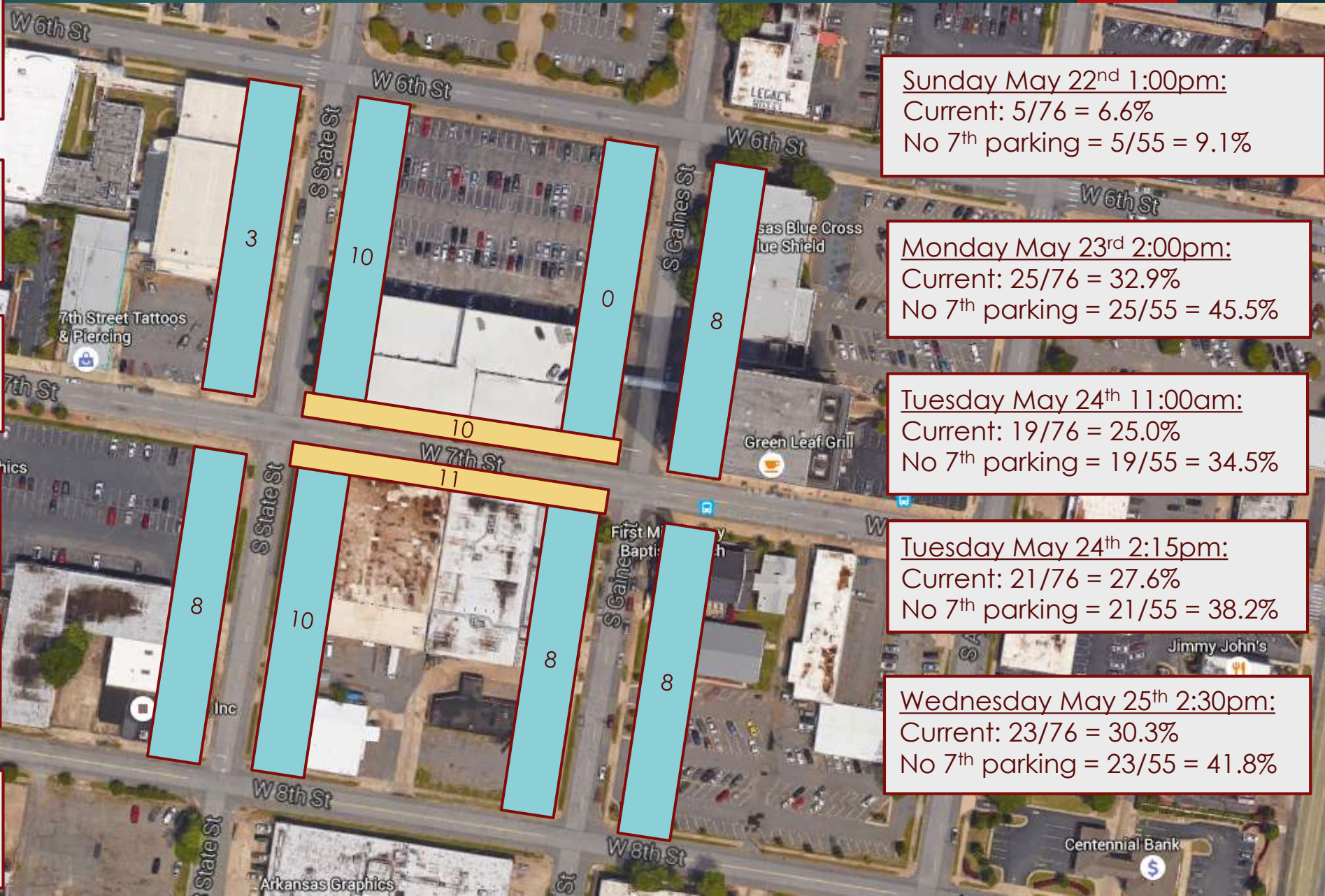
Sunday May 22nd 1:00pm:
Current: 5/76 = 6.6%
No 7th parking = 5/55 = 9.1%

Monday May 23rd 2:00pm:
Current: 25/76 = 32.9%
No 7th parking = 25/55 = 45.5%

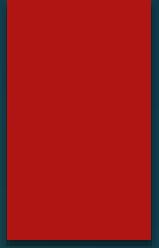
Tuesday May 24th 11:00am:
Current: 19/76 = 25.0%
No 7th parking = 19/55 = 34.5%

Tuesday May 24th 2:15pm:
Current: 21/76 = 27.6%
No 7th parking = 21/55 = 38.2%

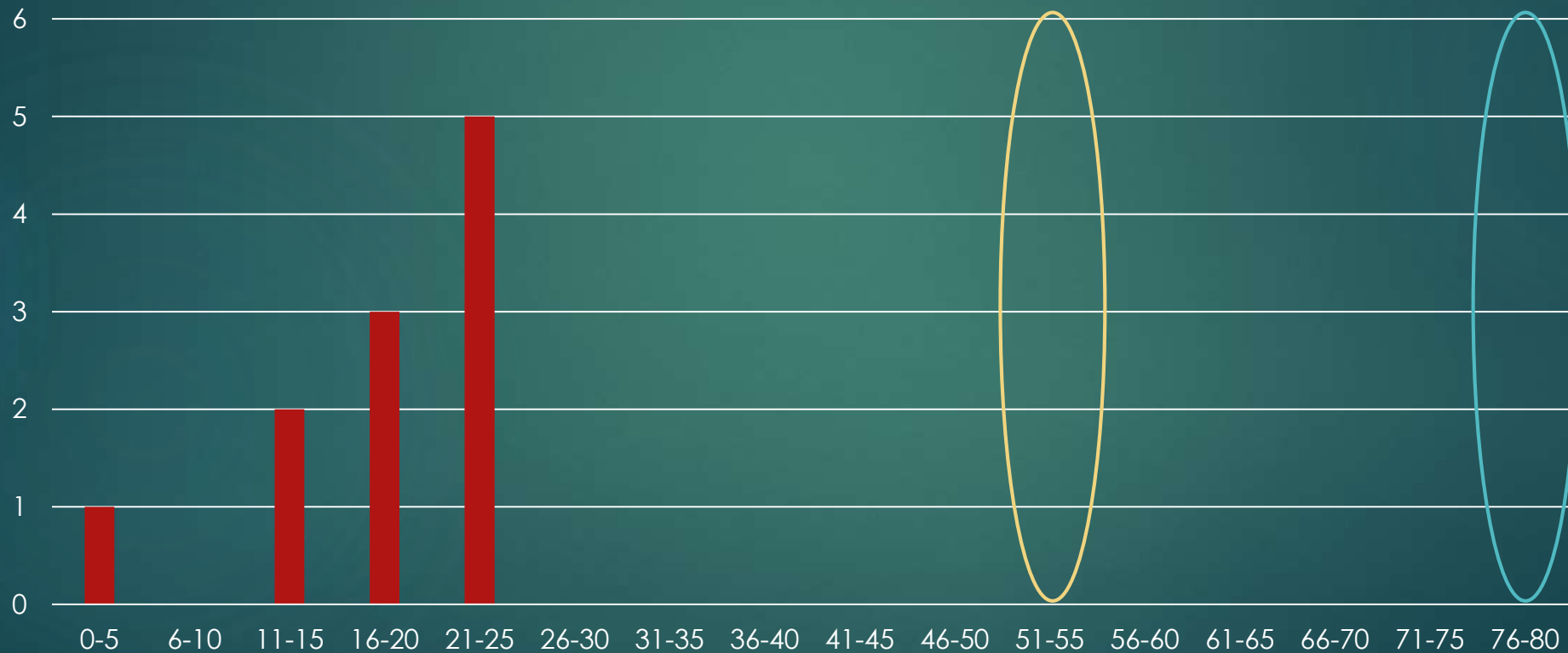
Wednesday May 25th 2:30pm:
Current: 23/76 = 30.3%
No 7th parking = 23/55 = 41.8%



Parking Use: State to Gaines



Histogram of Parking Use





Parking Use and Capacity

GAINES TO ARCH

Gaines to Arch Capacity

Capacity:
Current = 63 spaces
7th Street removed = 50

Affected:
First Missionary Baptist Church
Blue Cross/Blue Shield
Green Leaf Grill
Vacant business



Gaines to Arch Use

Capacity:
Current = 63 spaces
7th Street removed = 50

Thursday May 5th 2:00pm:
Current: 13/63 = 20.6%
No 7th parking = 13/50 = 26.0%

Sunday May 22nd 1:00pm:
Current: 5/63 = 7.9%
No 7th parking = 5/50 = 10.0%

Tuesday May 10th 11:00am:
Current: 15/63 = 23.8%
No 7th parking = 15/50 = 30.0%

Monday May 23rd 2:00pm:
Current: 20/63 = 31.7%
No 7th parking = 20/50 = 40.0%

Friday May 13th 4:30pm:
Current: 10/63 = 15.9%
No 7th parking = 10/50 = 20.0%

Tuesday May 24th 11:00am:
Current: 15/63 = 23.8%
No 7th parking = 15/50 = 30.0%

Tuesday May 17th 2:15pm:
Current: 20/63 = 31.7%
No 7th parking = 20/50 = 40.0%

Tuesday May 24th 2:15pm:
Current: 17/63 = 27.0%
No 7th parking = 17/50 = 34.0%

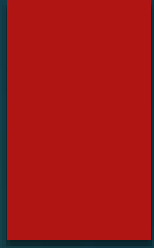
Wednesday May 18th 3:40pm:
Current: 14/63 = 22.2%
No 7th parking = 14/50 = 28.0%

Wednesday May 25th 2:30pm:
Current: 17/63 = 27.0%
No 7th parking = 17/50 = 34.0%

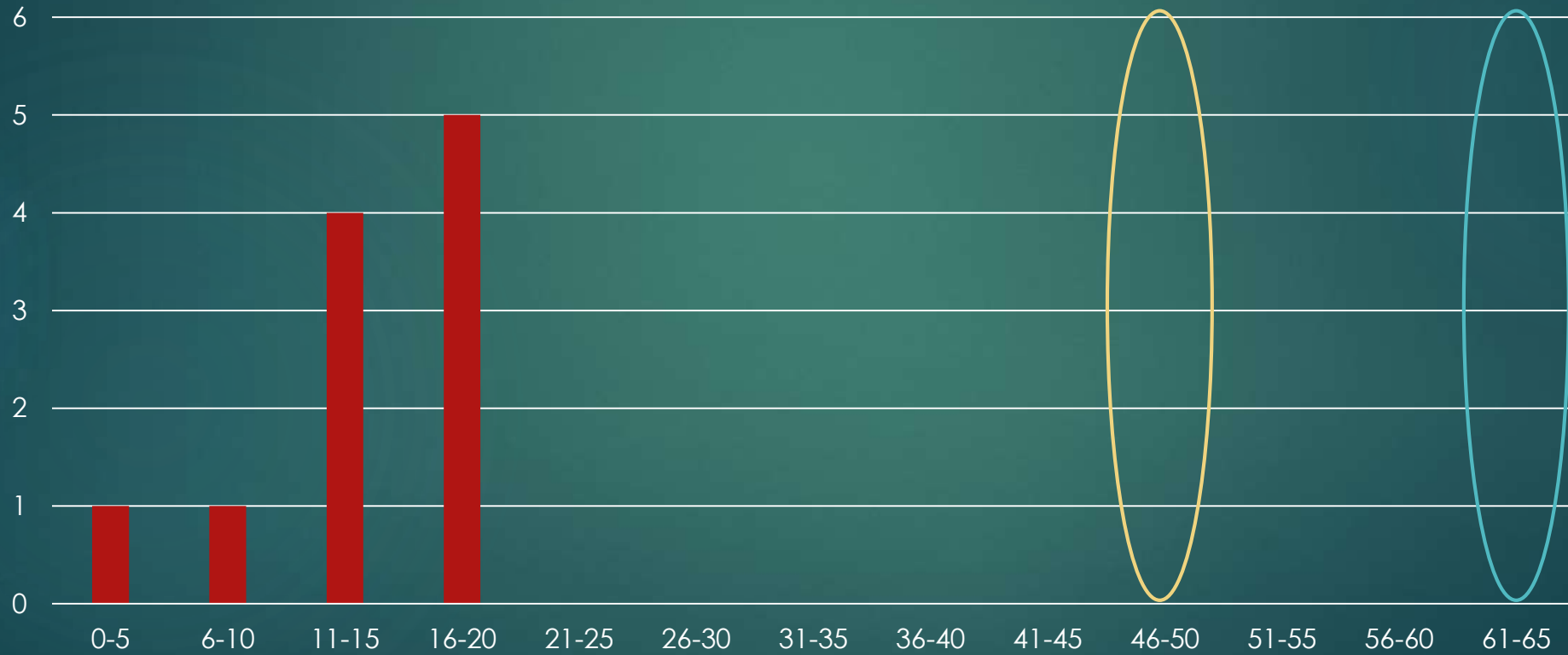
Thursday May 19th 10:00am:
Current: 19/63 = 30.2%
No 7th parking = 19/50 = 38.0%



Parking Use: Gaines to Arch



Histogram of Parking Use



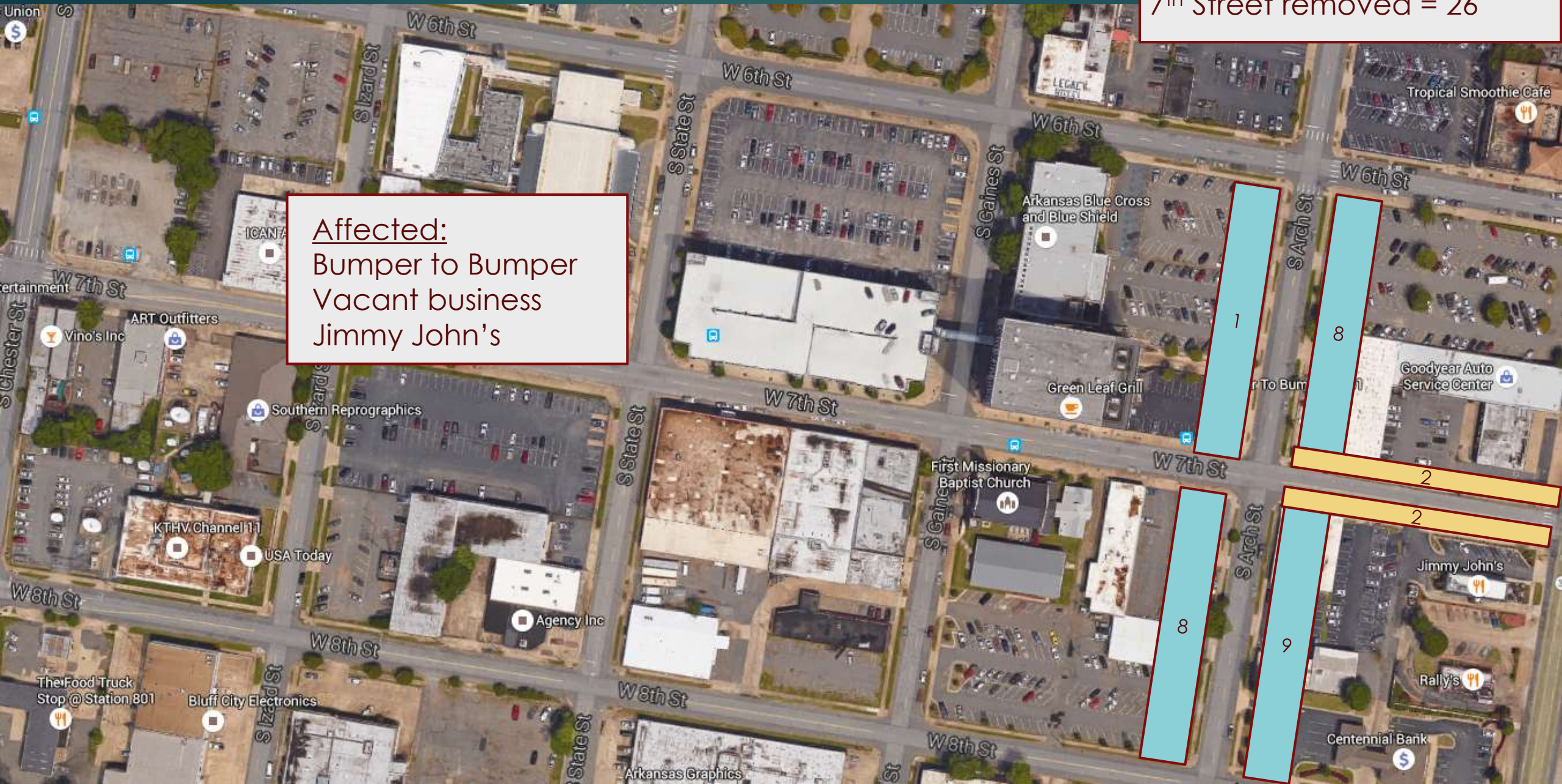


Parking Use and Capacity

ARCH TO BROADWAY

Arch to Broadway Capacity

Capacity:
Current = 30 spaces
7th Street removed = 26



Affected:
Bumper to Bumper
Vacant business
Jimmy John's



Arch to Broadway Use

Capacity:
Current = 30 spaces
7th Street removed = 26

Thursday May 5th 2:00pm:
Current: 3/30 = 10.0%
No 7th parking = 3/26 = 11.5%

Sunday May 22nd 1:00pm:
Current: 0/30 = 0%
No 7th parking = 0/26 = 0%

Tuesday May 10th 11:00am:
Current: 4/30 = 13.3%
No 7th parking = 4/26 = 15.4%

Monday May 23rd 2:00pm:
Current: 9/30 = 30.0%
No 7th parking = 9/26 = 34.6%

Friday May 13th 4:30pm:
Current: 1/30 = 3.3%
No 7th parking = 1/26 = 3.8%

Tuesday May 24th 11:00am:
Current: 6/30 = 20.0%
No 7th parking = 6/26 = 23.1%

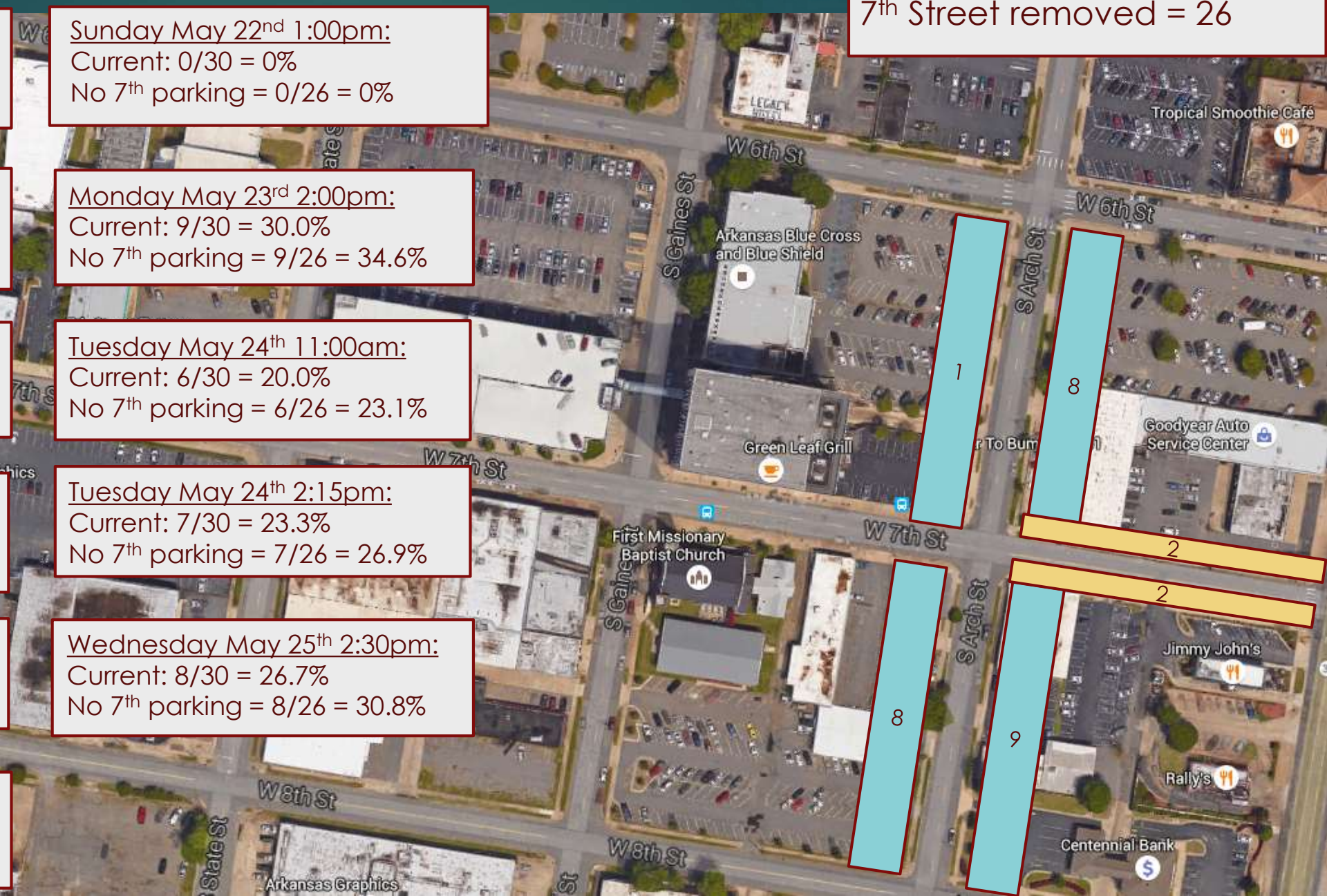
Tuesday May 17th 2:15pm:
Current: 8/30 = 26.7%
No 7th parking = 8/26 = 30.8%

Tuesday May 24th 2:15pm:
Current: 7/30 = 23.3%
No 7th parking = 7/26 = 26.9%

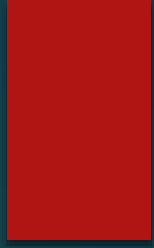
Wednesday May 18th 3:40pm:
Current: 5/30 = 16.7%
No 7th parking = 5/26 = 19.2%

Wednesday May 25th 2:30pm:
Current: 8/30 = 26.7%
No 7th parking = 8/26 = 30.8%

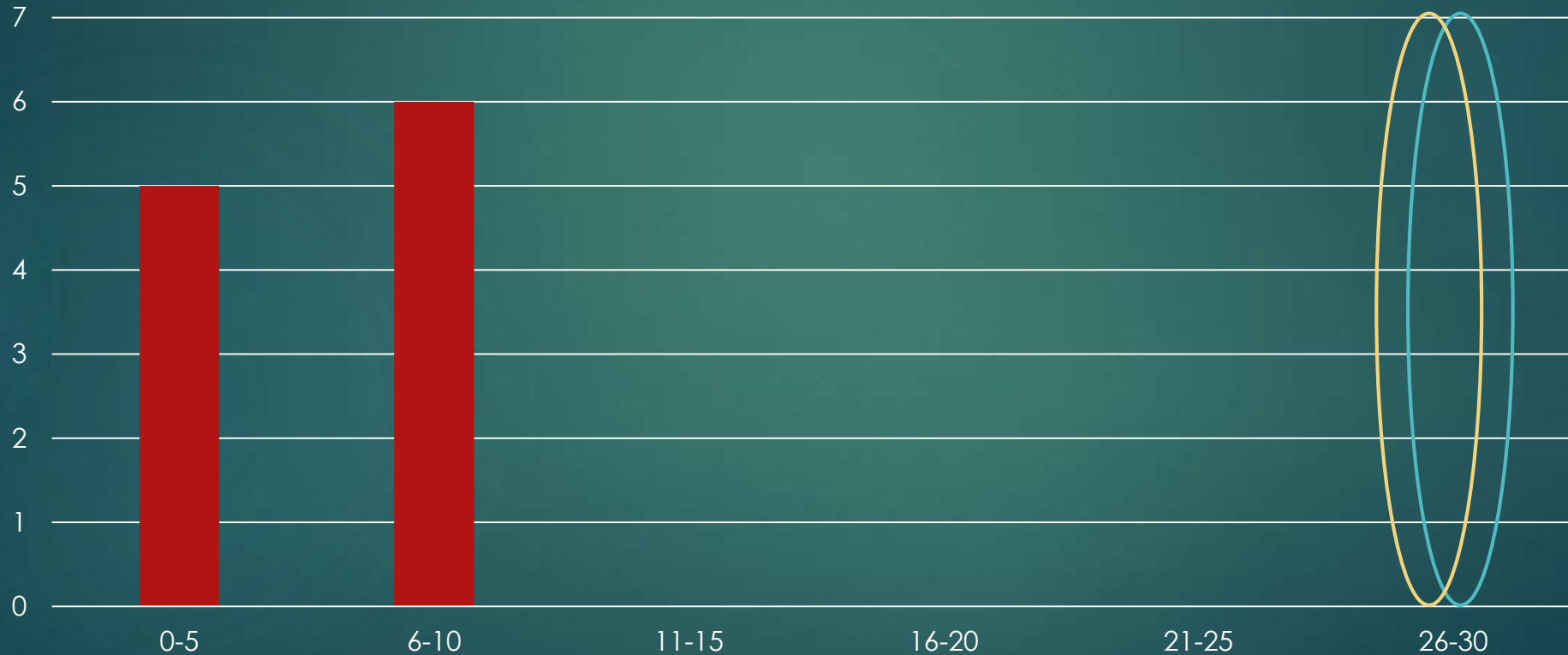
Thursday May 19th 10:00am:
Current: 9/30 = 30.0%
No 7th parking = 9/26 = 34.6%



Parking Use: Arch to Broadway



Histogram of Parking Use



Conclusions

- ▶ Corridor
 - ▶ Parking use approximately $\frac{1}{4}$ capacity
 - ▶ No stress on capacity when all parking removed from 7th Street
- ▶ Block by block
 - ▶ Parking use no where near capacity for any block
 - ▶ No stress on capacity when all parking removed from 7th Street

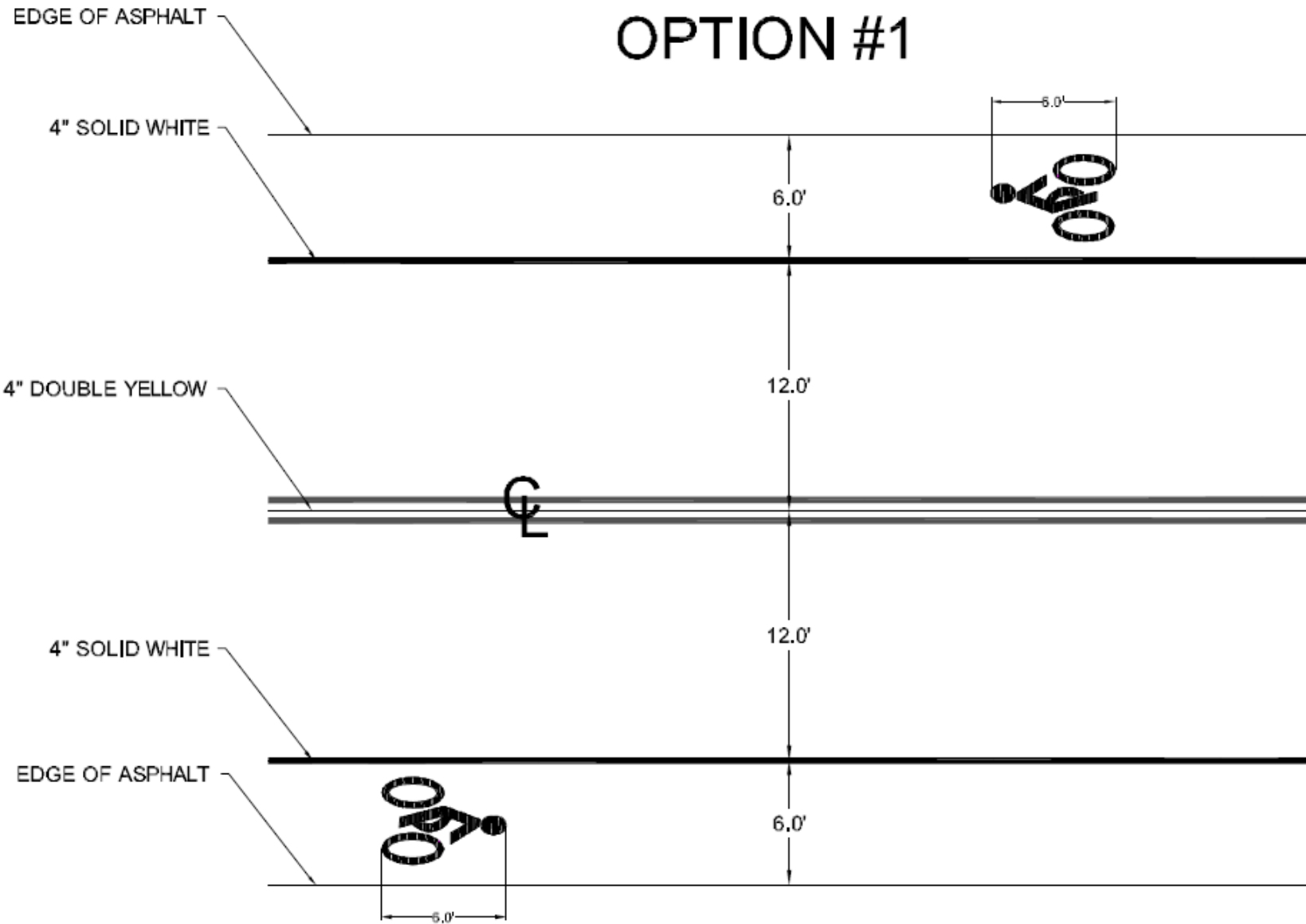


Road Widths and Lane Striping Options

7th Street Widths

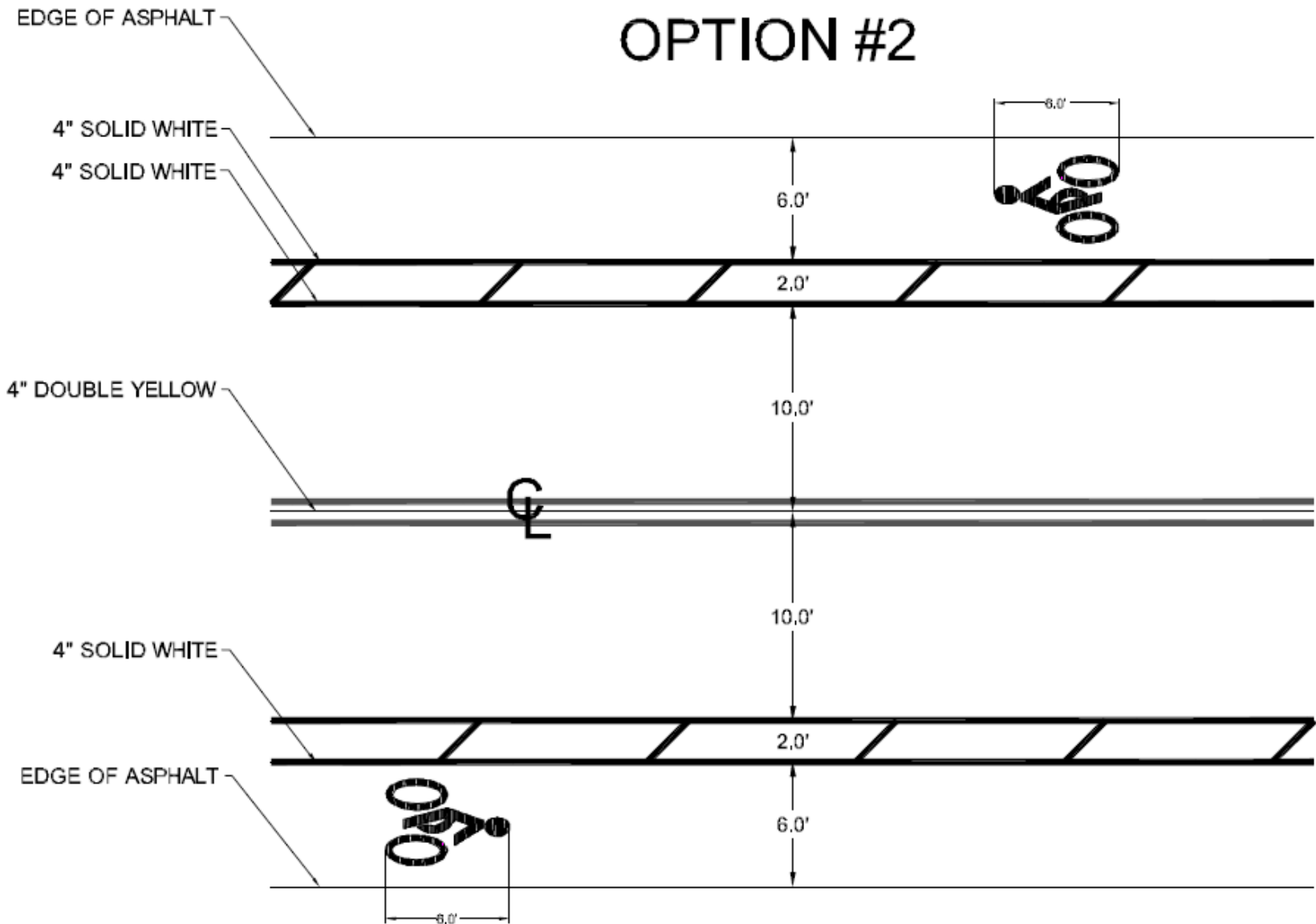
- ▶ Broadway to Arch = 35'10"
- ▶ Arch to Gaines = 37'8"
- ▶ Gaines to State = east ½ block = 37'8" : west ½ block = 40'6"
- ▶ State to Izard = 36'6"
- ▶ Izard to Chester = east ½ block = 36'1" : west ½ block = 40'4"

OPTION #1



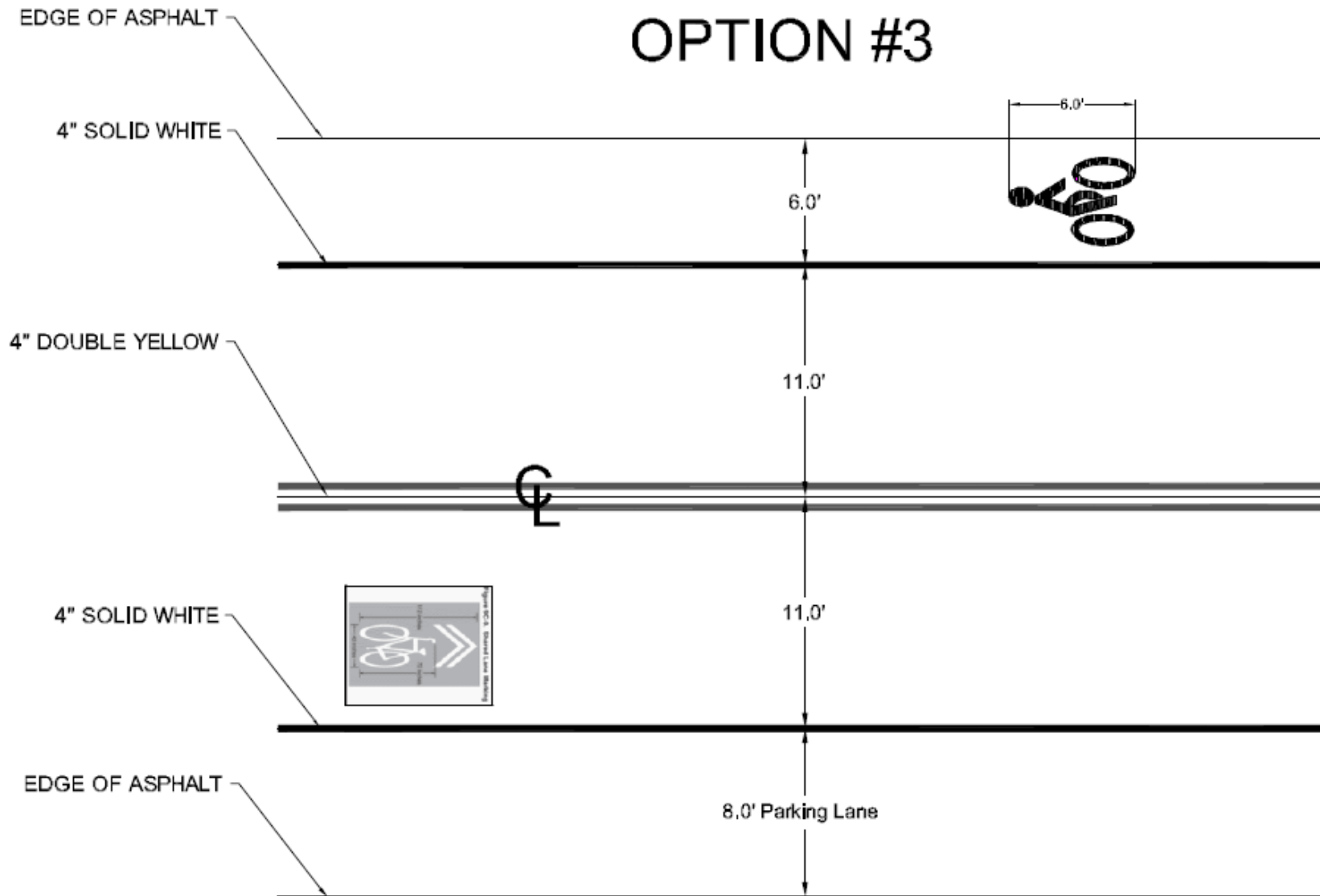
TYPICAL PAVEMENT SECTION N.T.S.

OPTION #2



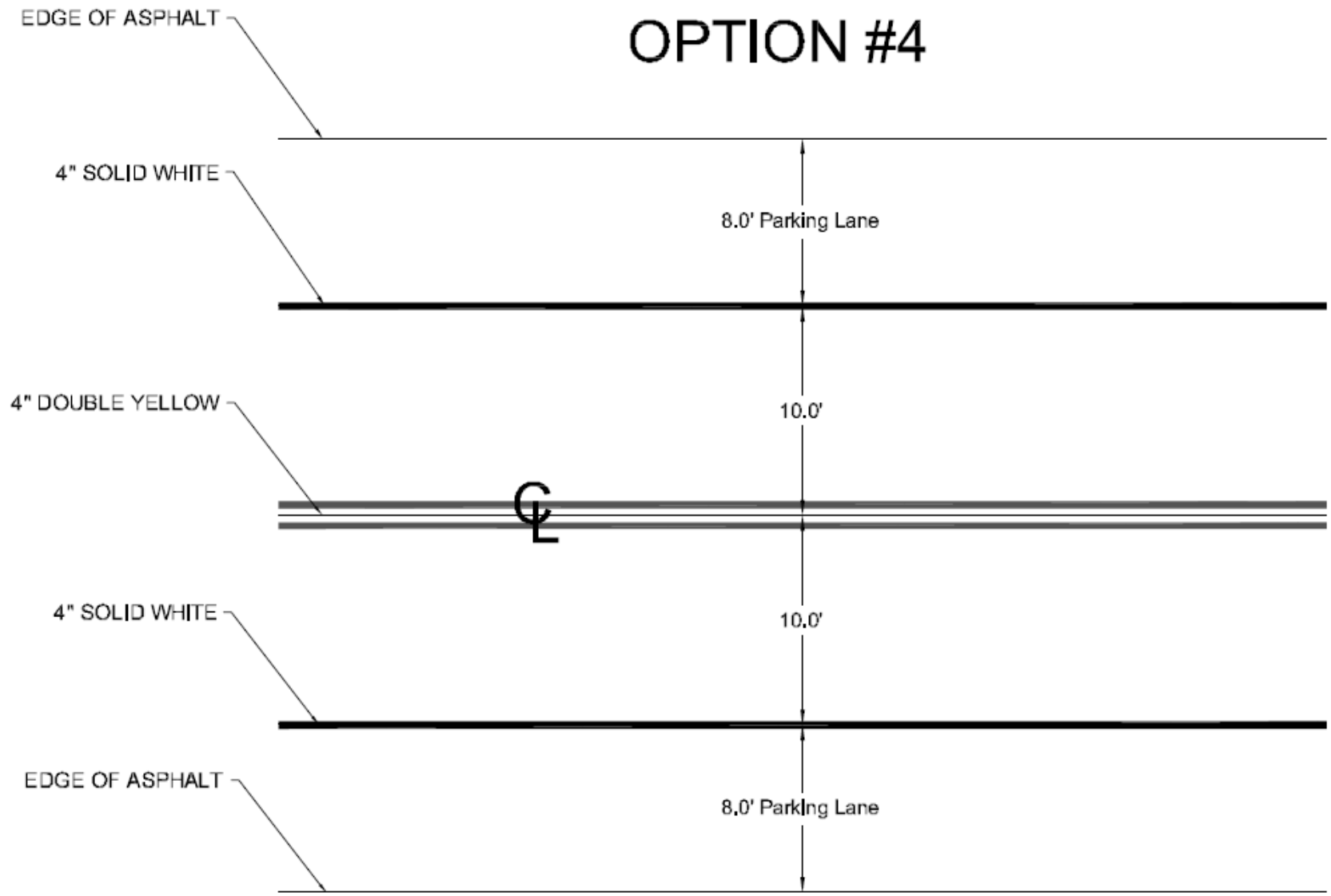
TYPICAL PAVEMENT SECTION N.T.S.

OPTION #3



TYPICAL PAVEMENT SECTION N.T.S.

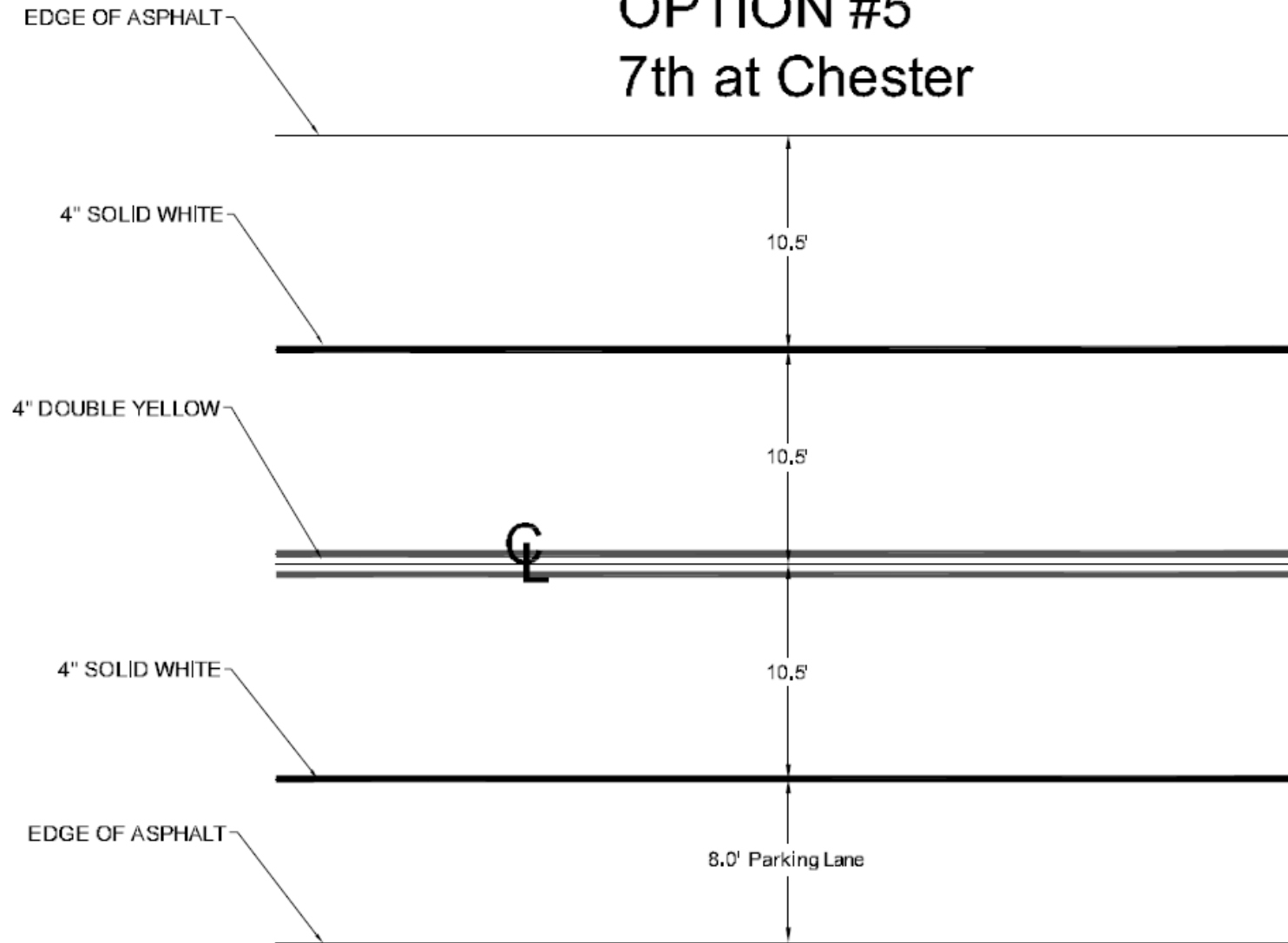
OPTION #4



TYPICAL PAVEMENT SECTION N.T.S.

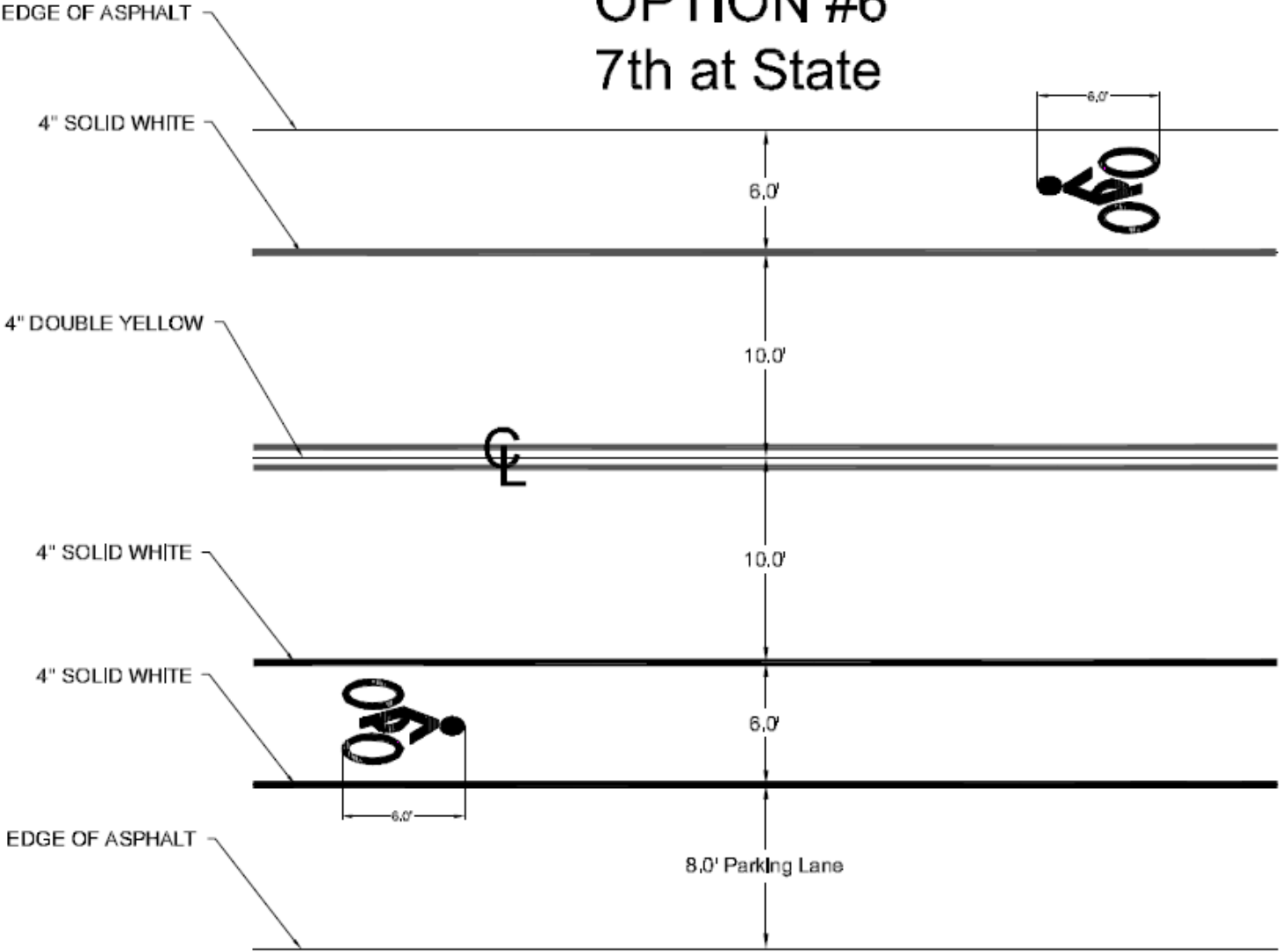
OPTION #5

7th at Chester



TYPICAL PAVEMENT
SECTION N.T.S.

OPTION #6 7th at State



TYPICAL PAVEMENT
SECTION N.T.S.

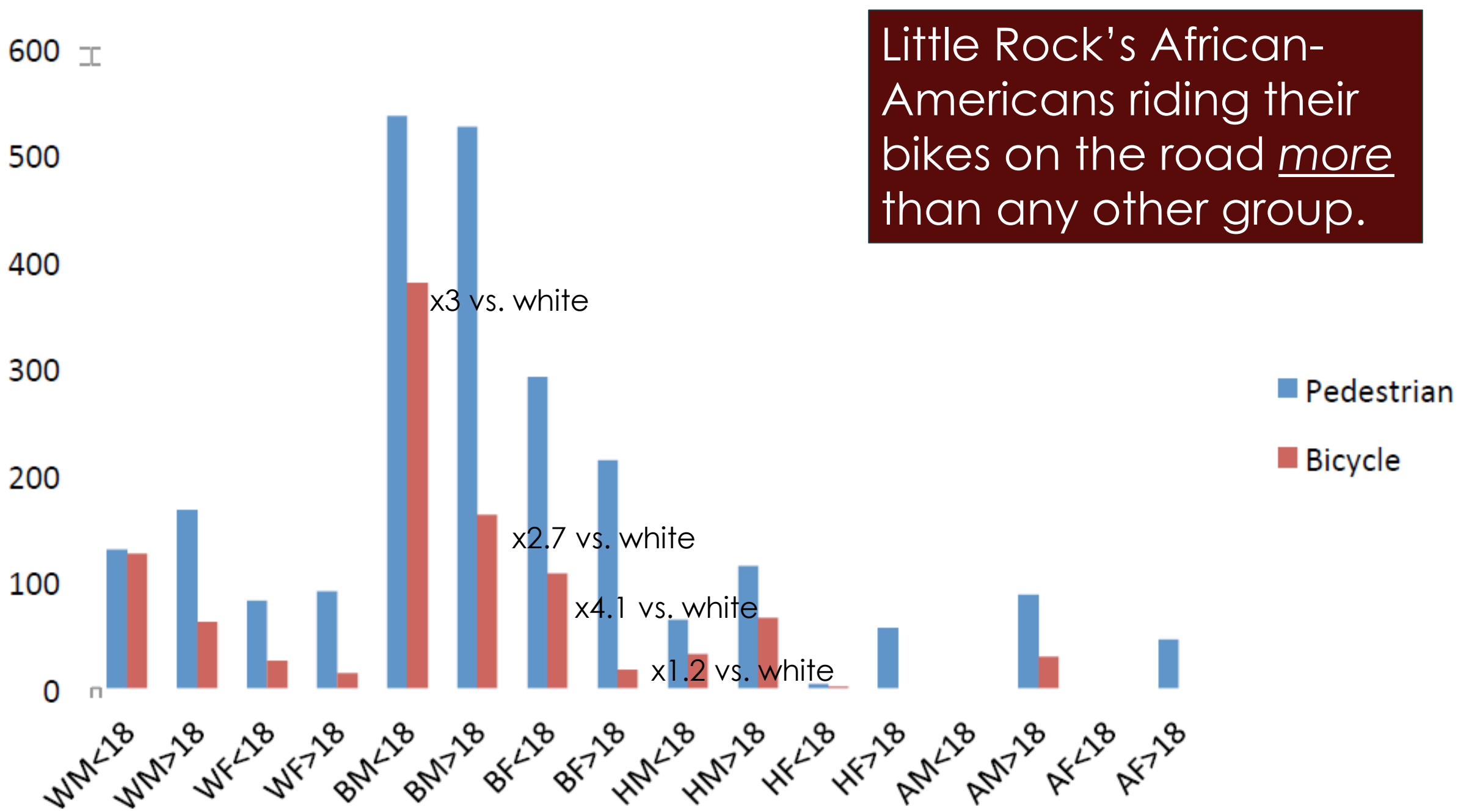
Public Comments



African-American Bike Usage in Central Arkansas

Little Rock's African-Americans riding their bikes on the road more than any other group.

of Crashes / 100,000 citizens



Parking Lot Distances

Target on University



Walmart at Shackleford Crossings



Baptist Health

