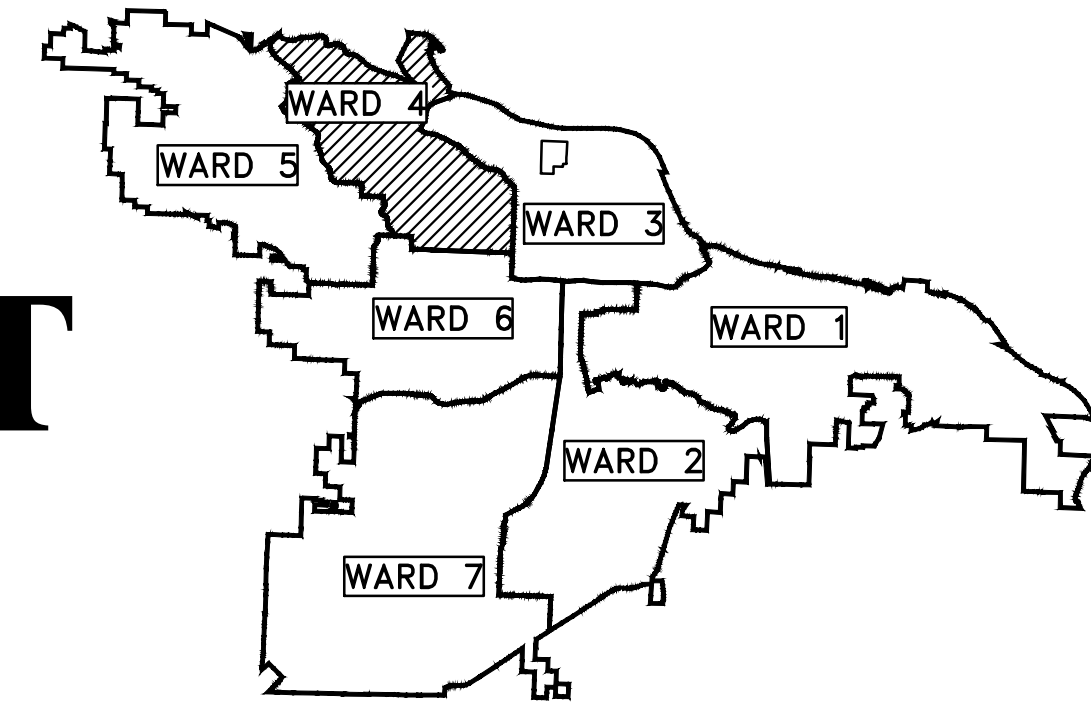
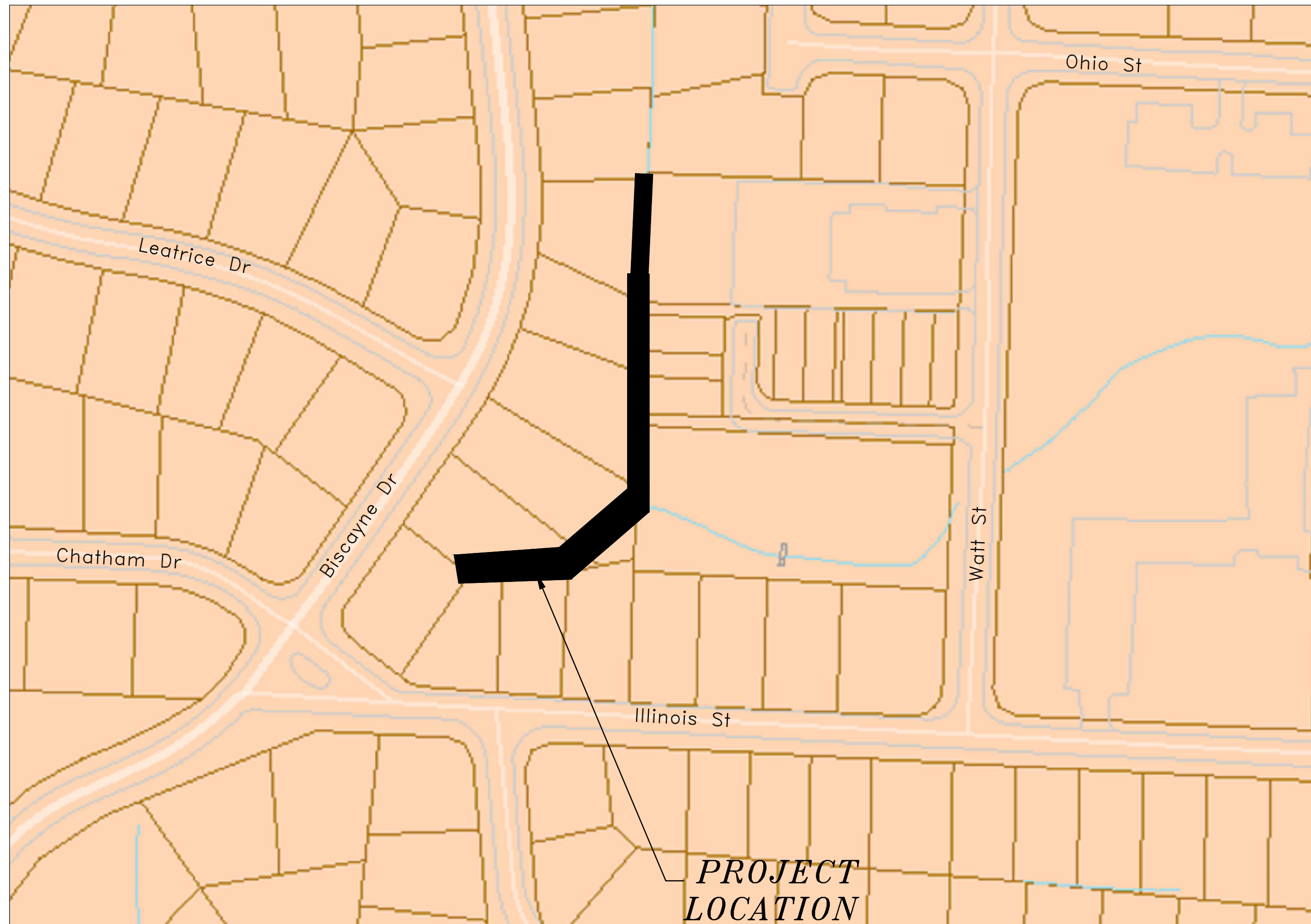


CLR PROJECT #16-4-DR-17 BISCAYNE & ILLINOIS STREET WARD 4



PROJECT LOCATION - WARD 4

C1	COVER SHEET
C2	LEGEND
C3	SITE PLAN
C4	PLAN & PROFILE - NORTH REACH
C5	PLAN & PROFILE - MAIN REACH
C6	DRIVEWAY PLAN



PROJECT
LOCATION



**Know what's below.
Call before you dig.**

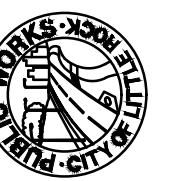


DEPARTMENT OF PUBLIC WORKS
CIVIL ENGINEERING
701 WEST MARKHAM STREET
LITTLE ROCK, ARKANSAS 72201

REVISIONS	DATE
DEH	081018

CITY OF LITTLE ROCK, ARKANSAS
16-4-DR-17 BISCAYNE & ILLINOIS STREET

COVER SHEET



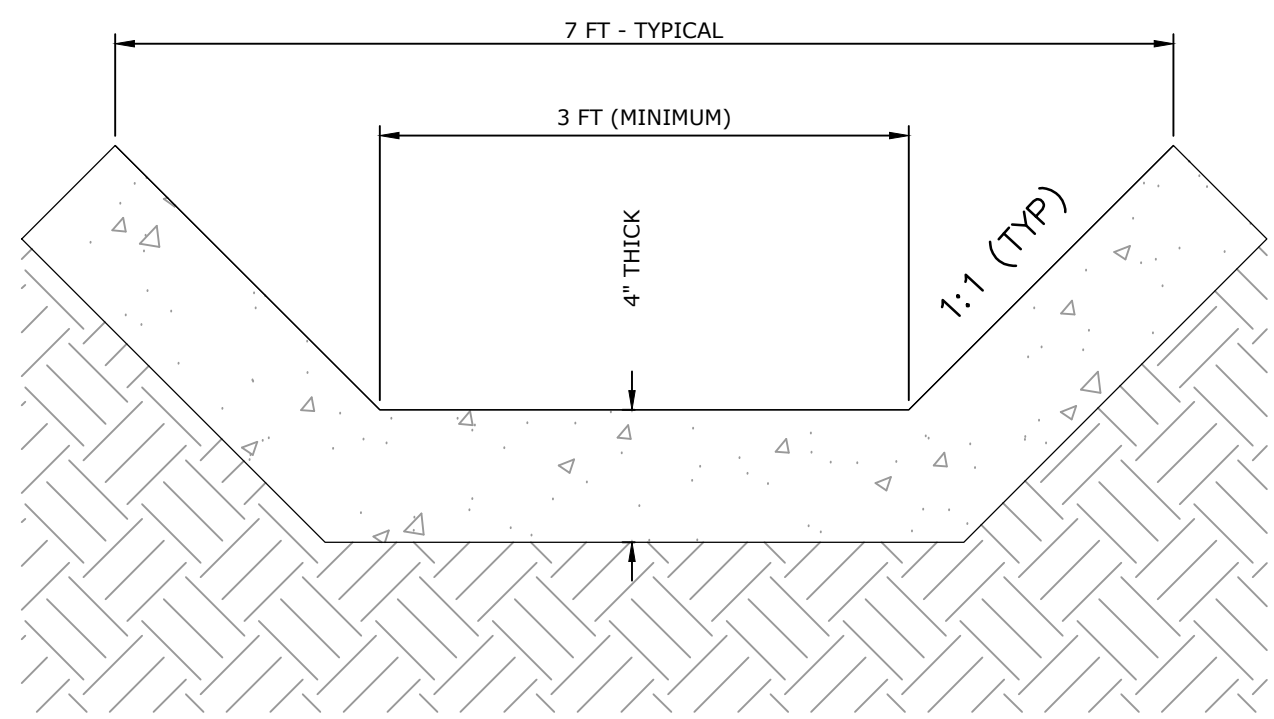
DEPARTMENT OF PUBLIC WORKS
CIVIL ENGINEERING
701 W. MARKHAM
LITTLE ROCK, ARKANSAS 72201



DRAWN BY	MEM
DESIGNED	RTP
CHECKED	RTP
DATE	4/24/2017
SCALE	NTS
PROJECT NO.	CLR #16-4-DR-17
SHEET NO.	C1

REVISIONS	DATE
DEH	081018

CLR PROJECT#			
BISCAYNE-ILLINOIS DRAINAGE IMPROVEMENTS			
10-Aug-18			
ITEM #	ITEM DESCRIPTION	UNIT	QUANTITY
2.01	Site Preparation	L.S.	1
3.01	Unclassified Excavation	C.Y.	150
3.06	Borrow Material	C.Y.	100
3.40	Topsoil	C.Y.	80
4.01	Aggregate Base Course	TON	100
7.06	Concrete Driveway, 6"	S.F.	720
14.01	Solid Sodding (Bermuda)	S.Y.	80
16.01	Maintenance of Traffic	L.S.	1
18.01	Fencing, 4' Chain Link	L.F.	330
18.55	Water for Dust Control	GAL	1000
24.02	Check Dam (CD)	C.Y.	3
24.11	Silt Fence - Type A (SFA)	L.F.	100
24.17	Disturbed Area Stabilization - Temporary Grassing	AC	1
6.01	ASPHALT SURFACE COURSE	TON	45
18.08	1' THICK RIPRAP, GROUTED	CY	60
30.00	PAVING, 4" CONCRETE DITCH	SF	2500



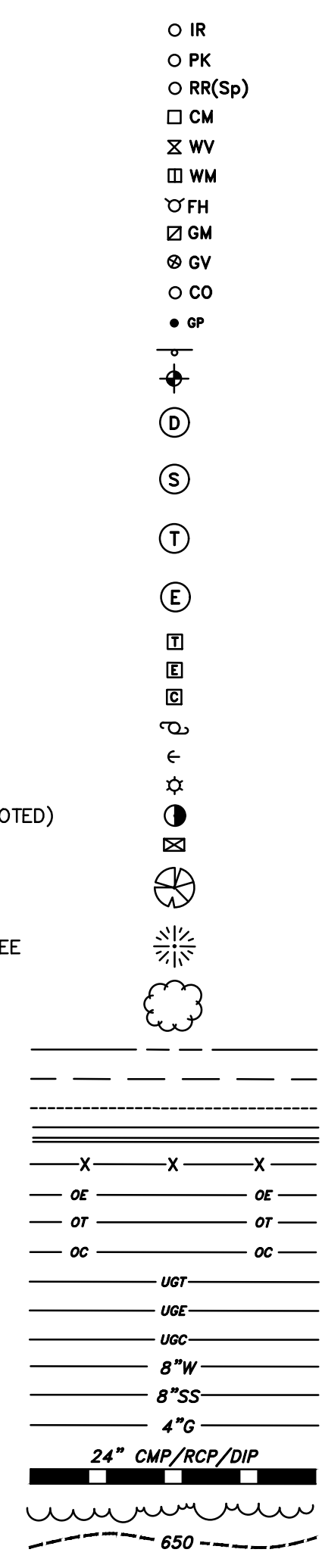
CONCRETE DITCH PAVING

N.T.S.

- CONCRETE DITCH SHALL BE POURED AND FORMED MONOLYTHICALLY AGAINST A PREPARED AND SHAPED SUBGRADE. MAINTAIN A MINIMUM FLOOR WIDTH OF 3' AND PAVED DEPTH OF 2'.
- ADJACENT GRADES SHALL BE RESTORED TO TIE-INTO TOP EDGE OF DITCH AND SODDED.
- 1/2" WIDE TRANSVERSE EXPANSION JOINTS SHALL BE PLACED IN CONCRETE DITCH PAVING AT MAXIMUM 45' INTERVALS. EXPANSION JOINTS SHALL BE SEALED WITH URETHANE SEALANT.
- EXISTING SIDE DRAINS SHALL BE EXTENDED THROUGH THE DITCH WALL AND ANGLE-CUT FLUSH WITH WALL SURFACE.

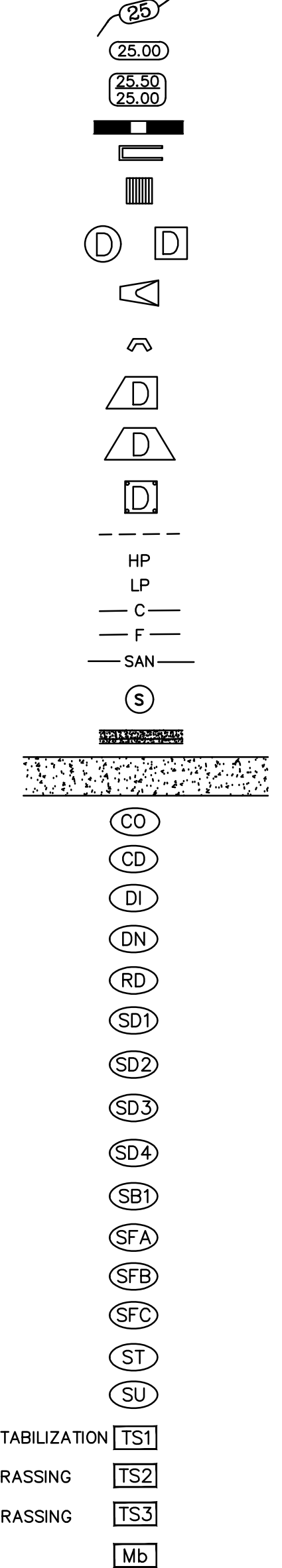
EXISTING

- IRON ROD
- PK NAIL
- R.R. SPIKE
- CONC. MONUMENT
- WATER VALVE
- WATER METER
- FIRE HYDRANT
- GAS METER
- GAS VALVE
- CLEAN-OUT
- GUARD POST (BOLLARD)
- SIGN POST
- BENCHMARK
- STORM SEWER MANHOLE
- SANITARY SEWER MANHOLE
- TELEPHONE MANHOLE
- ELECTRIC MANHOLE
- TELEPHONE BOX
- ELECTRIC BOX
- CABLE BOX
- UTILITY POLE
- GUY WIRE
- LIGHT POLE
- POST OR POLE (TYPE AS NOTED)
- MAILBOX
- DECIDUOUS TREE
- EVERGREEN/CONIFEROUS TREE
- BUSH
- PROPERTY LINE
- SETBACK LINE
- EASEMENT LINE
- CURB
- FENCE
- OVERHEAD ELECTRIC
- OVERHEAD TELEPHONE
- OVERHEAD CABLE
- UNDERGROUND TELEPHONE
- UNDERGROUND ELECTRIC
- UNDERGROUND CABLE
- WATER LINE
- SEWER LINE
- GAS LINE
- STORM SEWER/CULVERT
- EDGE OF WOODS
- CONTOUR LINE



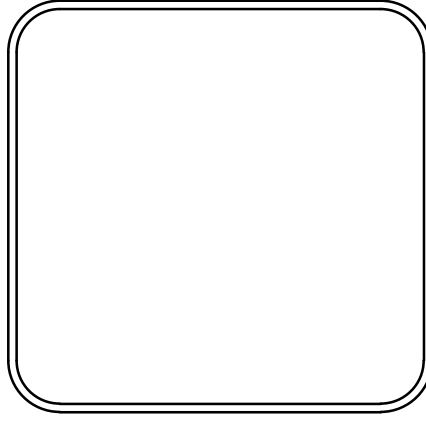
PROPOSED

- PROPOSED CONTOUR
- PROPOSED SPOT ELEVATION
- PROPOSED SPOT CURB ELEVATION
- STORM SEWER - PIPE
- STORM SEWER - MITERED END SECTION
- STORM SEWER - GRATE INLET
- STORM SEWER - JUNCTION BOX
- STORM SEWER - FLARED END SECTION
- STORM SEWER - HEADWALL
- STORM SEWER - SINGLE WING
- STORM SEWER - DOUBLE WING
- STORM SEWER - AREA INLET
- GRADE BREAK LINE
- HIGH POINT
- LOW POINT
- CUT LINE
- FILL LINE
- SANITARY SEWER PIPE
- SANITARY SEWER MANHOLE
- PROPOSED CURB
- PROPOSED CONCRETE
- CONSTRUCTION - ENTRANCE/EXIT
- CHECK DAM
- DIVERSION BERM
- DOWNDRAIN STRUCTURE - TEMPORARY
- ROCK DAM
- SEDIMENT BARRIER - SILT FENCE
- SEDIMENT BARRIER - GRAVEL RING
- SEDIMENT BARRIER - BLOCK & GRAVEL
- SEDIMENT BARRIER - BLOCK
- TEMPORARY SEDIMENT BASIN
- SILT FENCE - TYPE A
- SILT FENCE - TYPE B
- SILT FENCE - TYPE C
- STORM DRAIN OUTLET PROTECTION
- SURFACE ROUGHENING
- DISTURBED AREA STABILIZATION - TEMPORARY STABILIZATION
- DISTURBED AREA STABILIZATION - TEMPORARY GRASSING
- DISTURBED AREA STABILIZATION - PERMANENT GRASSING
- MATting/BLANKETS



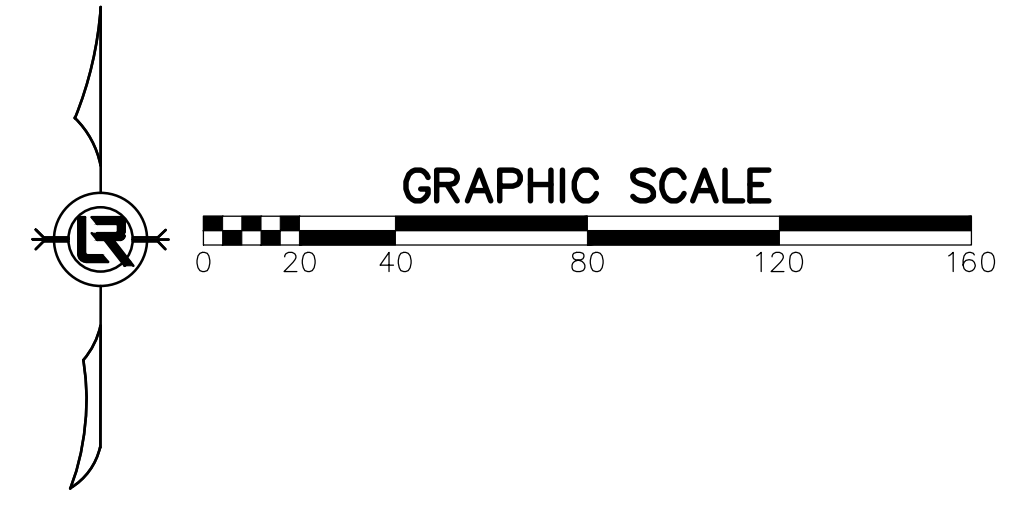
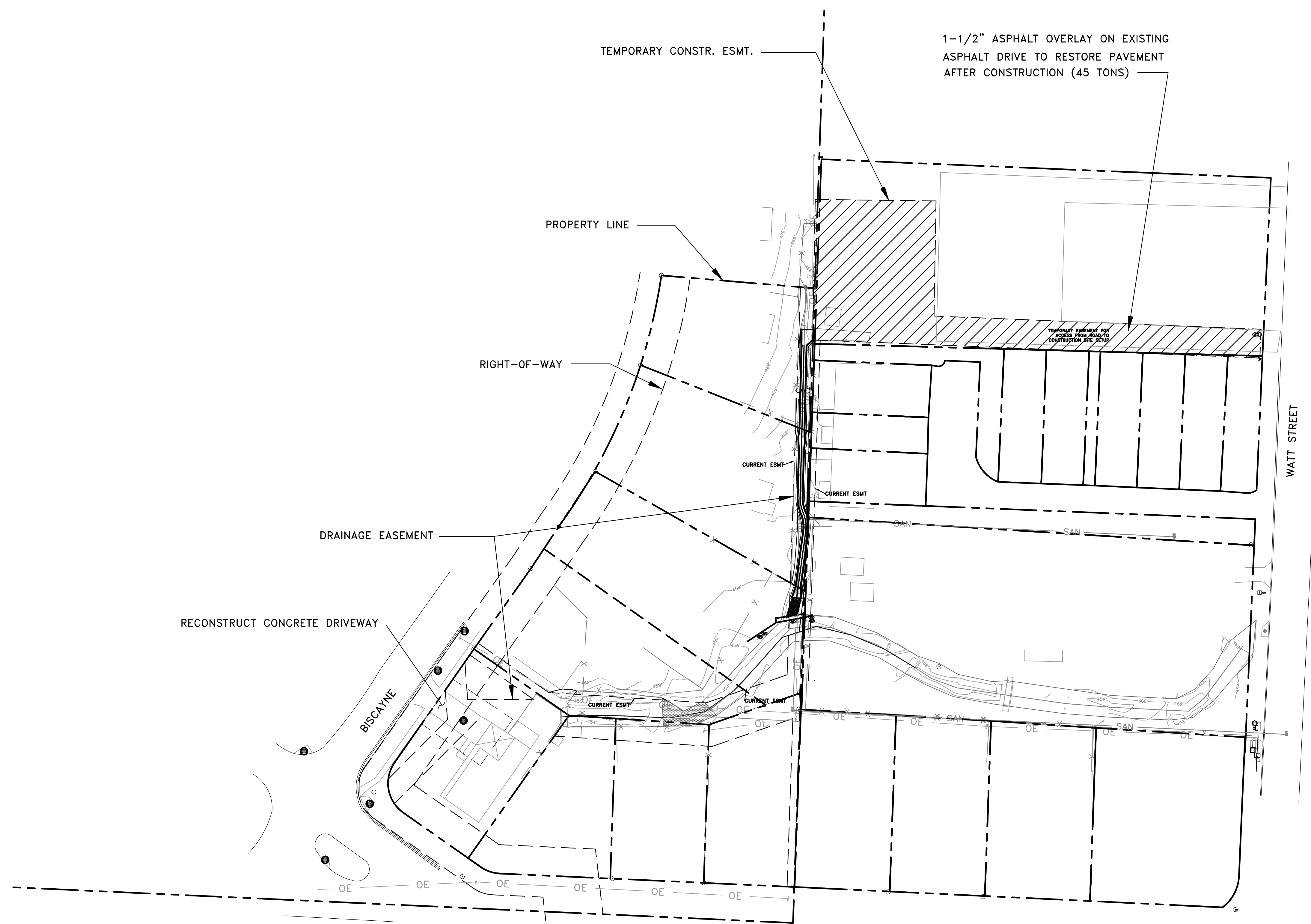
CITY OF LITTLE ROCK, ARKANSAS
 16-4-DR-17 BISCAYNE & ILLINOIS STREET
 LEGEND

DEPARTMENT OF PUBLIC WORKS
 CIVIL ENGINEERING
 701 W. MARKHAM
 LITTLE ROCK, ARKANSAS 72201



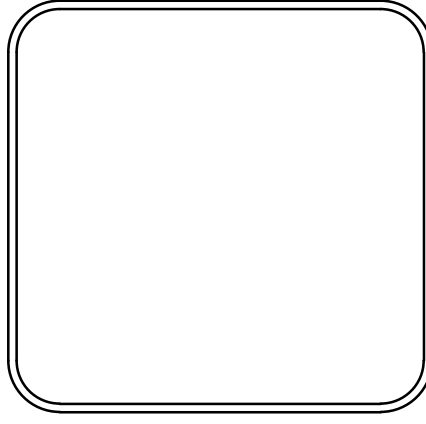
DRAWN BY	MEM
DESIGNED	RTP
CHECKED	RTP
DATE	04/24/2017
SCALE	NTS
PROJECT NO.	CLR #16-4-DR-17
SHEET NO.	C2

REVISIONS	DATE
DEH	081018



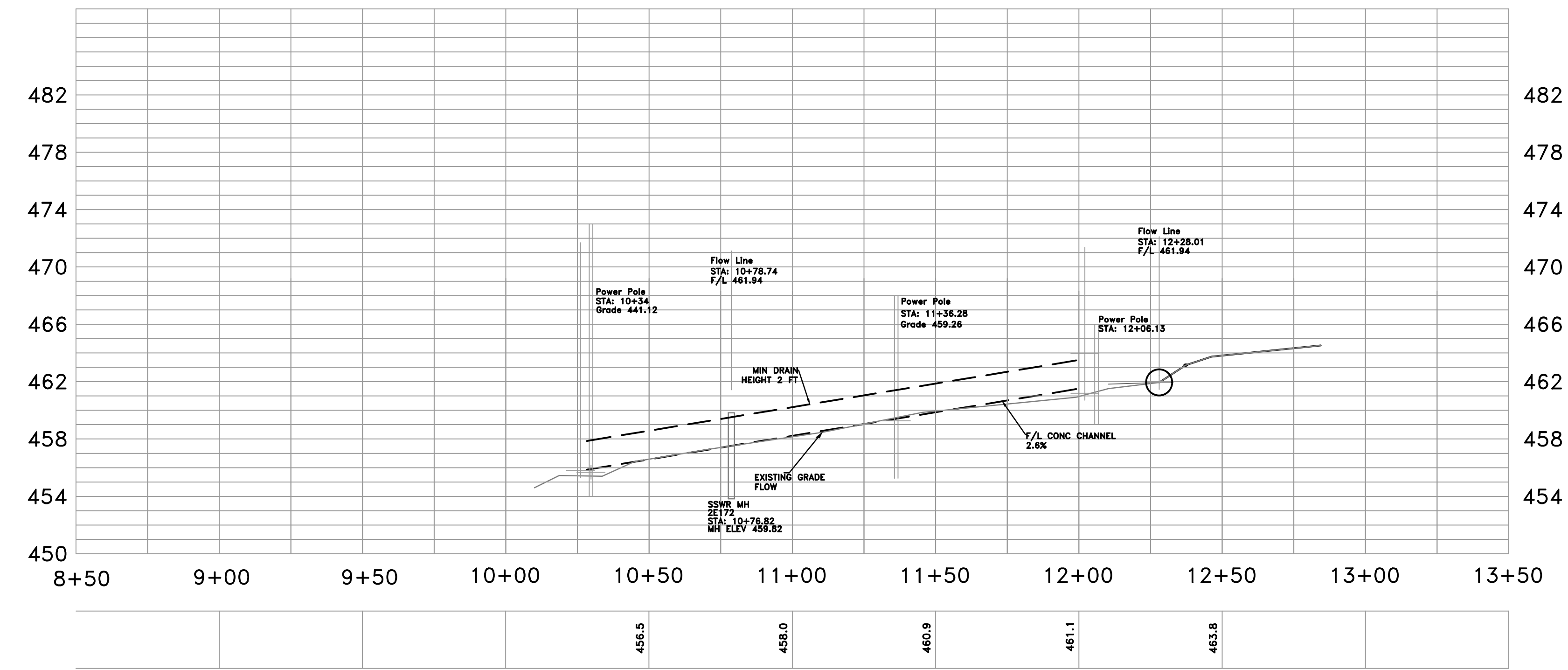
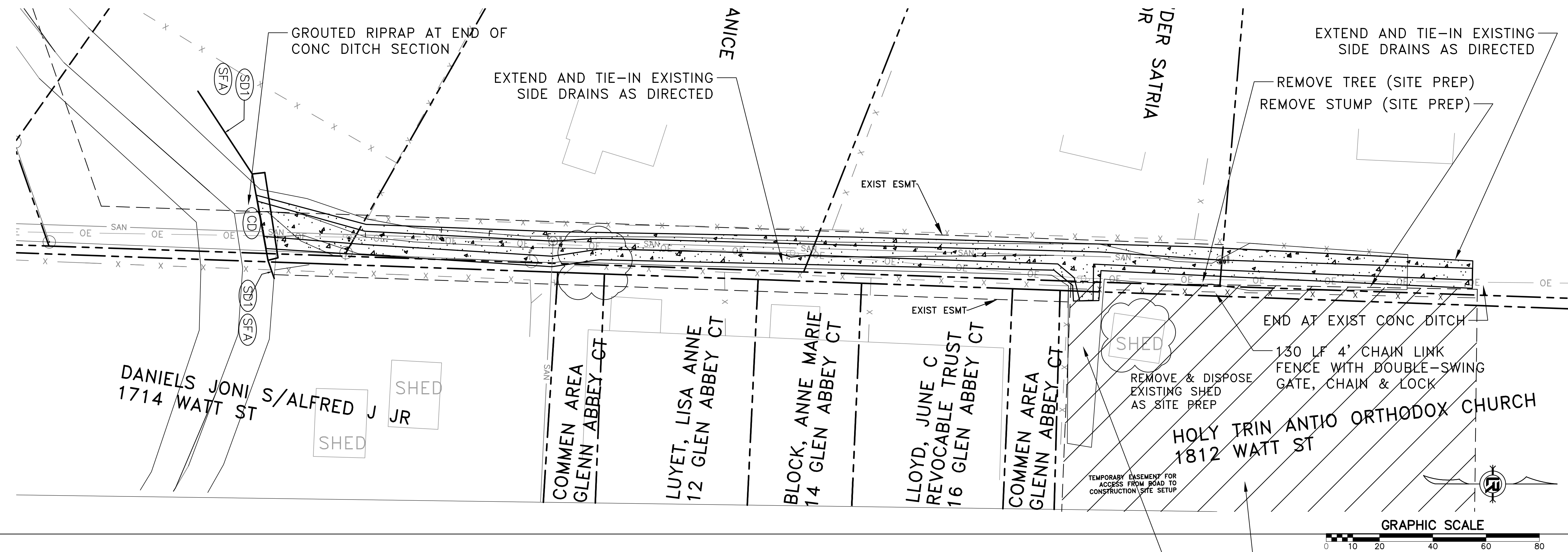
CITY OF LITTLE ROCK, ARKANSAS
 16-4-DR-17 BISCAYNE & ILLINOIS STREET
 SITE PLAN

DEPARTMENT OF PUBLIC WORKS
 CIVIL ENGINEERING
 701 W. MARKHAM
 LITTLE ROCK, ARKANSAS 72201



DRAWN BY	MEM
DESIGNED	RTP
CHECKED	RTP
DATE	4/24/2017
SCALE	1:50
PROJECT NO.	CLR #16-4-DR-17
SHEET NO.	C3

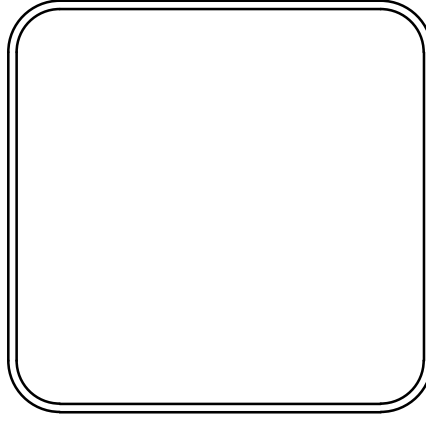
REVISIONS	DATE
DEH	081018



NORTH REACH

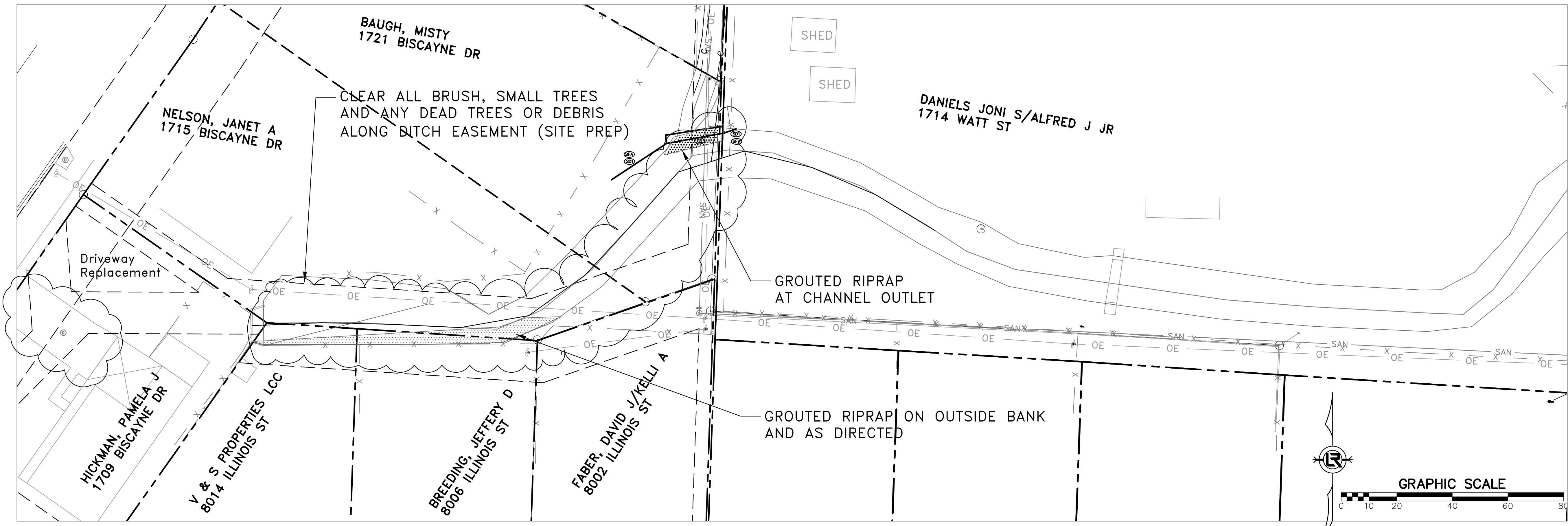
CITY OF LITTLE ROCK, ARKANSAS
 16-4-DR-17 BISCAYNE & ILLINOIS STREET
 PLAN & PROFILE - NORTH REACH

DEPARTMENT OF PUBLIC WORKS
 CIVIL ENGINEERING
 701 W. MARKHAM
 LITTLE ROCK, ARKANSAS 72201



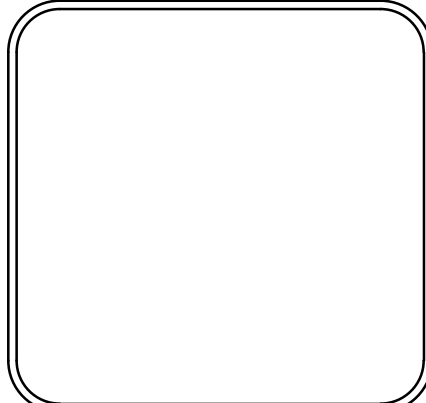
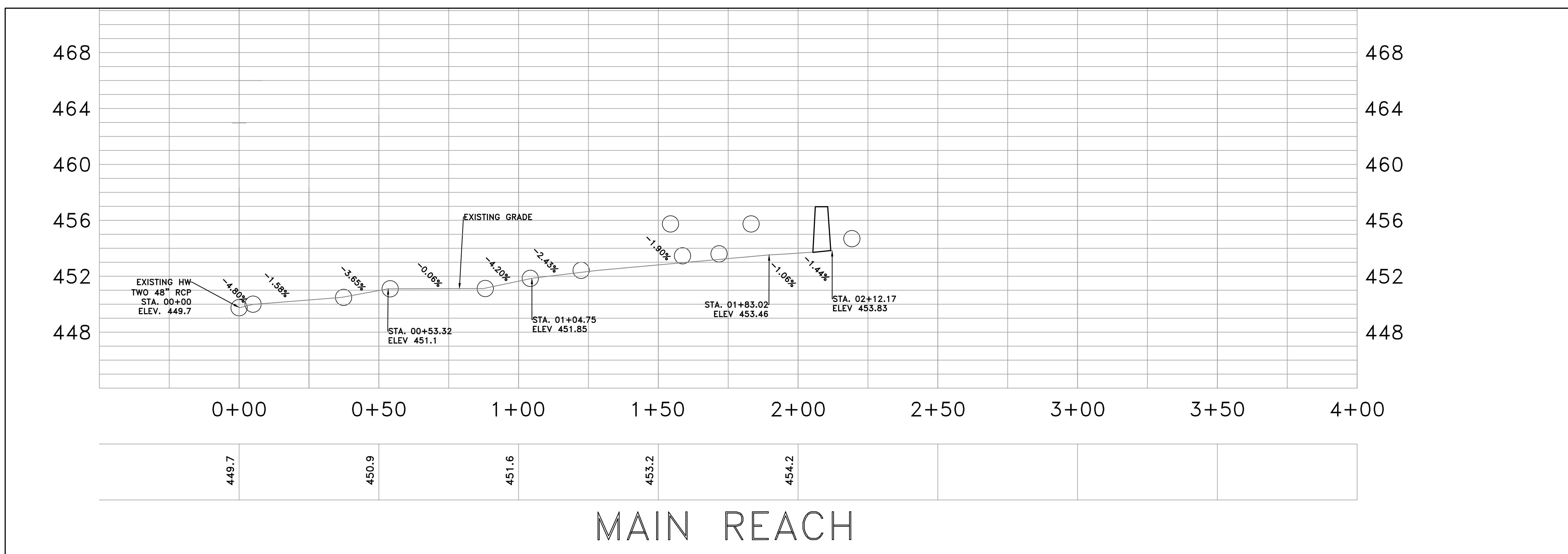
DRAWN BY
 MEM
 DESIGNED
 RTP
 CHECKED
 RTP
 DATE
 4/24/2017
 SCALE
 H: 1"=20' V: 1"=40'
 PROJECT NO.
 CLR #16-4-DR-17
 SHEET NO.
C4

REVISIONS	DATE
DEH	081018



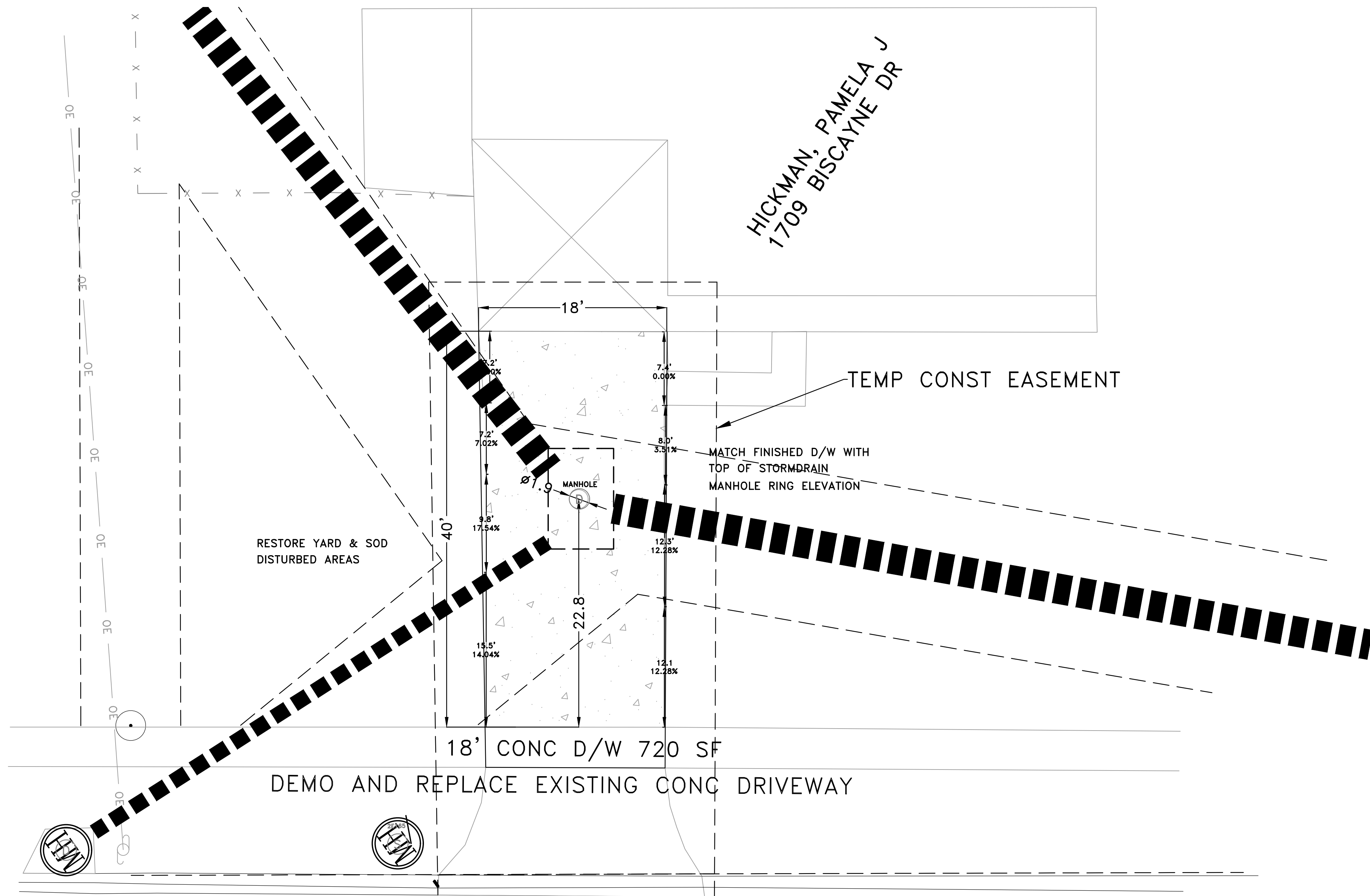
CITY OF LITTLE ROCK, ARKANSAS
 16-4-DR-17 BISCAYNE & ILLINOIS STREET
 PLAN & PROFILE - MAIN REACH

DEPARTMENT OF PUBLIC WORKS
 CIVIL ENGINEERING
 701 W. MARKHAM
 LITTLE ROCK, ARKANSAS 72201



DRAWN BY
 MEM
 DESIGNED
 RTP
 CHECKED
 RTP
 DATE
 4/24/2017
 SCALE
 H: 1"=20' V: 1"=40'
 PROJECT NO.
 CLR #16-4-DR-17
 SHEET NO.
C5

REVISIONS	DATE
DEH	081018

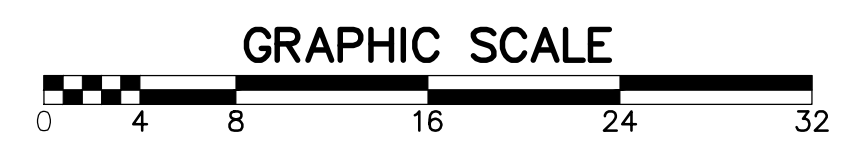
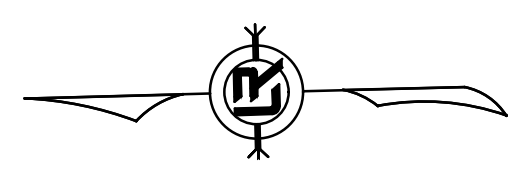


CITY OF LITTLE ROCK, ARKANSAS
 16-4-DR-17 BISCAIYNE & ILLINOIS STREET
 DRIVEWAY PLAN

DEPARTMENT OF PUBLIC WORKS
 CIVIL ENGINEERING
 701 W. MARKHAM
 LITTLE ROCK, ARKANSAS 72201

4/28/17

BISCAIYNE DRIVE



DRAWN BY	MEM
DESIGNED	RTP
CHECKED	RTP
DATE	4/24/2017
SCALE	1" = 8'
PROJECT NO.	CLR #16-4-DR-17
SHEET NO.	C6