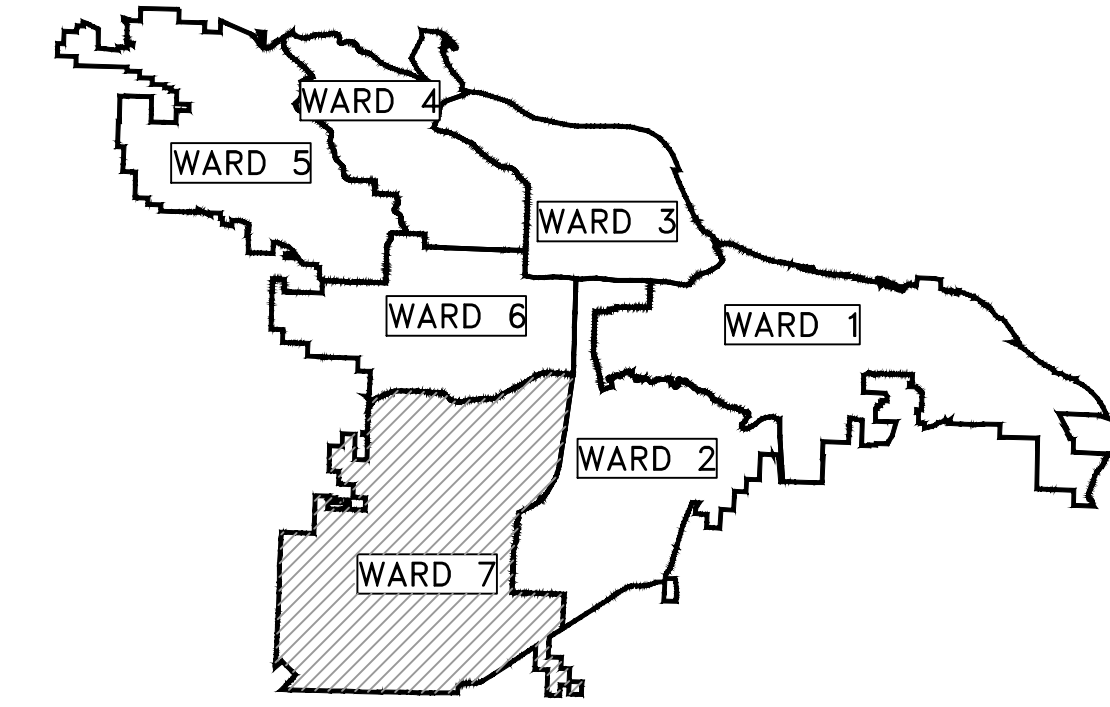
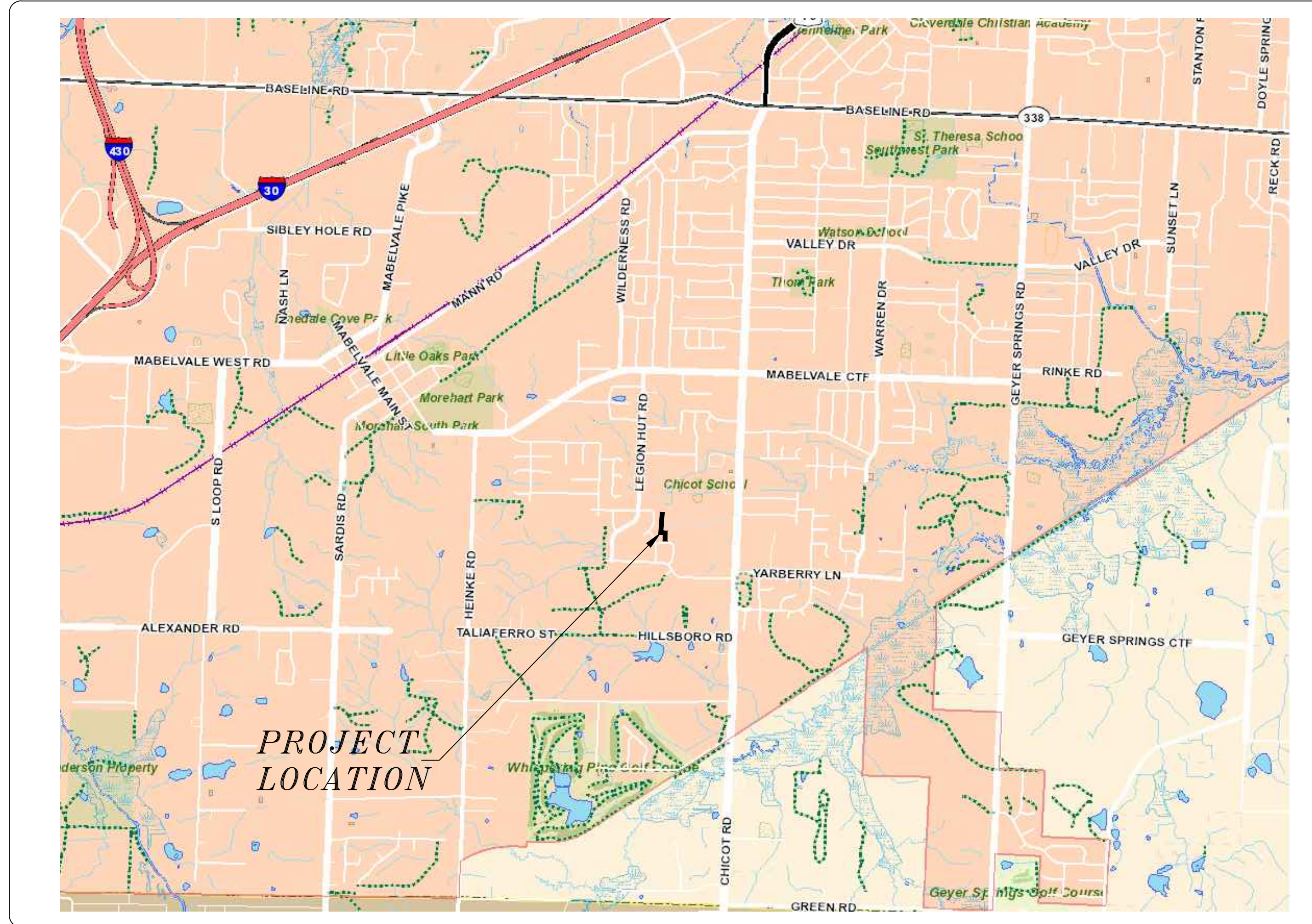


OXFORD VALLEY DRAINAGE 16-7-DR-246



PROJECT LOCATION – WARD 7



SHEET NO.	TITLE
C1	COVER SHEET
C2	QUANTITIES & DETAILS
C3	PLAN PROFILE 0+00 TO 5+00
C4	PLAN PROFILE 5+00 TO END
C5	PLAN PROFILE CHURCHILL DRIVE 0+00 TO 2+27
C6	EROSION CONTROL



DEPARTMENT OF PUBLIC WORKS
CIVIL ENGINEERING
701 WEST MARKHAM STREET
LITTLE ROCK, ARKANSAS 72201



Know what's below.
Call before you dig.



REVISIONS	DATE

CITY OF LITTLE ROCK, ARKANSAS
OXFORD VALLEY DRAINAGE
COVER SHEET

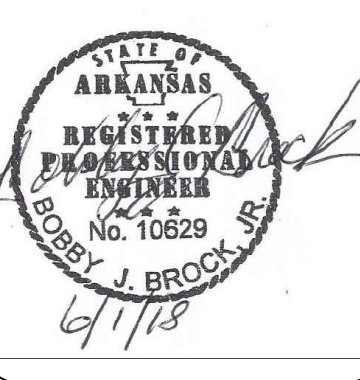
DEPARTMENT OF PUBLIC WORKS
CIVIL ENGINEERING
701 W. MARKHAM
LITTLE ROCK, ARKANSAS 72201



DRAWN BY	JHD
DESIGNED	JHD/BJB
CHECKED	BJB
DATE	06/01/2018
SCALE	N.T.S.
PROJECT NO.	16-7-DR-246
SHEET NO.	C1

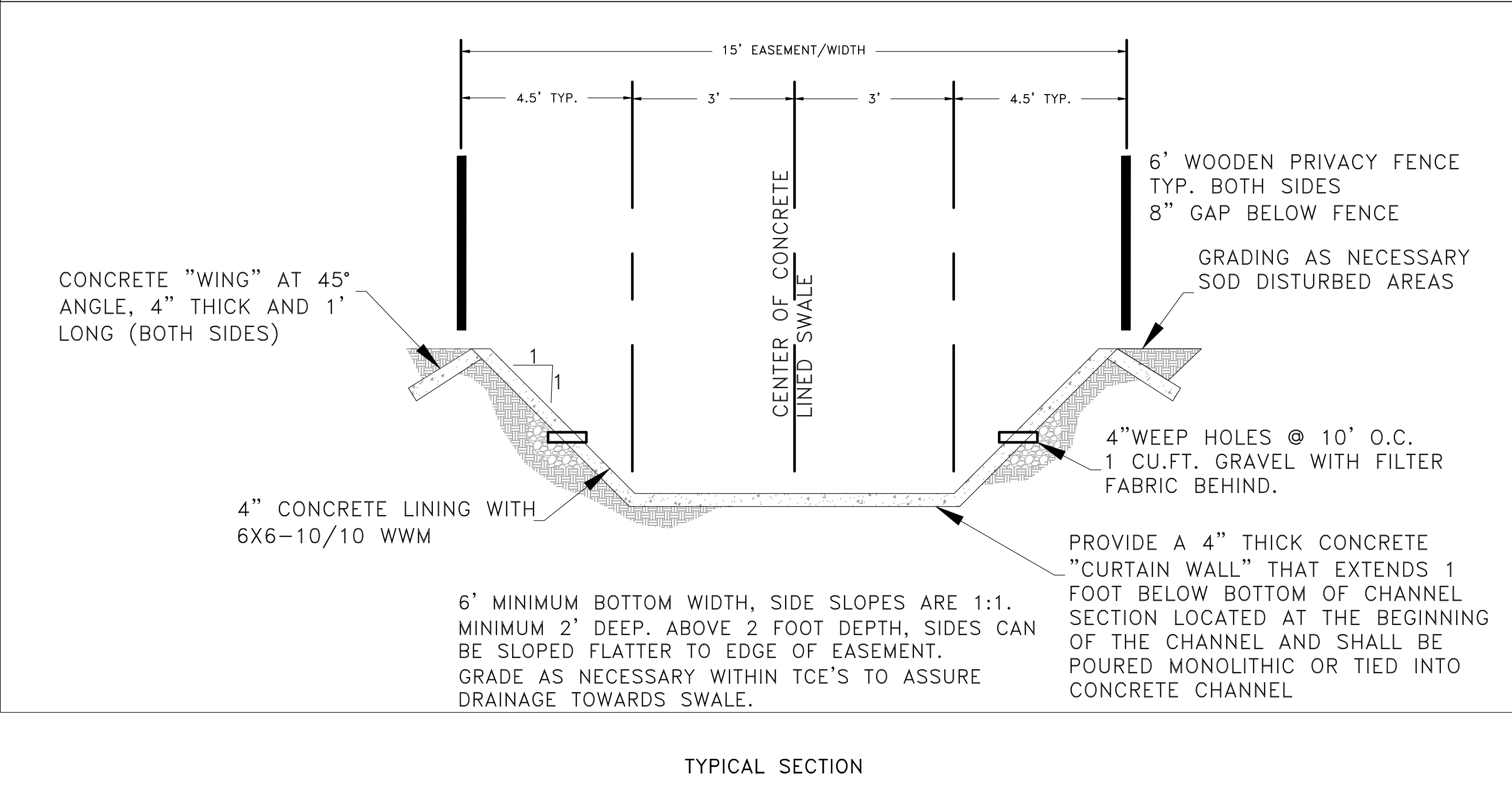
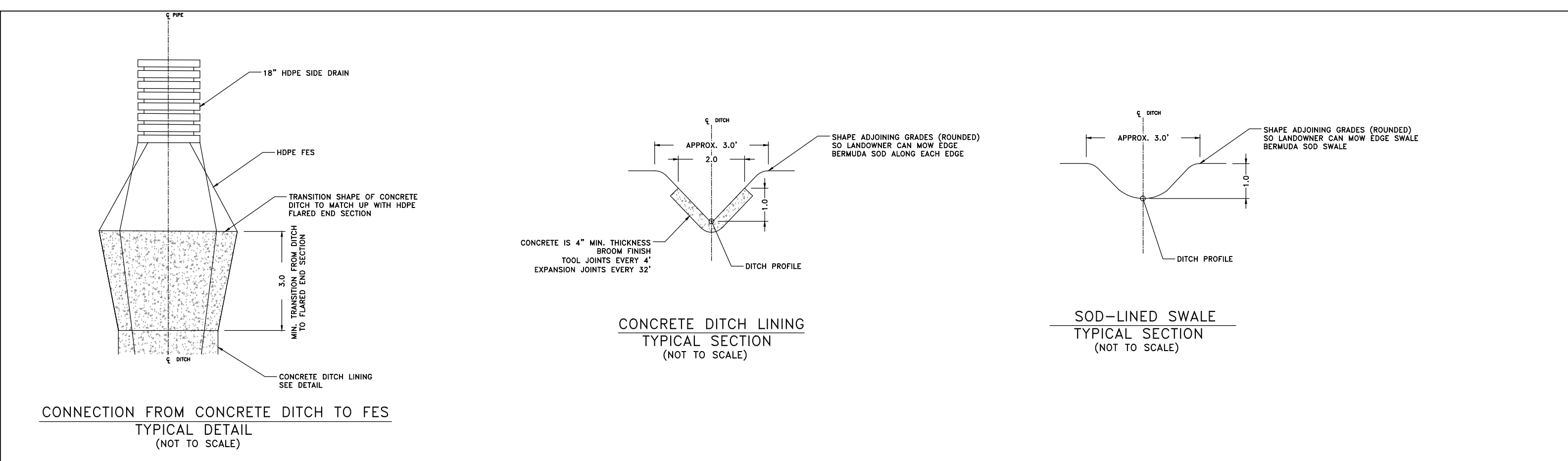
CITY OF LITTLE ROCK, ARKANSAS
OXFORD DRAINAGE
 QUANTITIES AND LEGEND

DEPARTMENT OF PUBLIC WORKS
 CIVIL ENGINEERING
 701 W. MARKHAM
 LITTLE ROCK, ARKANSAS 72201



DRAWN BY
 JHD
DESIGNED
 BJB/JHD
CHECKED
 BJB
DATE
 06-01-2018
SCALE
 N.T.S.
PROJECT NO.
 16-7-DR-246
SHEET NO.
 C2

EXISTING	PROPOSED		
IRON ROD	○ IR	CONTOUR	
PK NAIL	○ PK	SPOT ELEVATION	
R.R. SPIKE	○ RR(Sp)	SPOT CURB ELEVATION	
CONC. MONUMENT	□ CM	STORM SEWER – PIPE	
WATER VALVE	X WV	STORM SEWER – MITERED END SECTION	
WATER METER	□ WM	STORM SEWER – GRATE INLET	
FIRE HYDRANT	∇ FH	STORM SEWER – JUNCTION BOX	
GAS METER	□ GM	STORM SEWER – FLARED END SECTION	
GAS VALVE	⊙ GV	STORM SEWER – HEADWALL	
CLEAN-OUT	○ CO	STORM SEWER – INLET WITH SINGLE EXTENSION	
GUARD POST (BOLLARD)	● GP	STORM SEWER – INLET WITH DOUBLE EXTENSION	
SIGN POST		STORM SEWER – AREA INLET	
BENCHMARK		GRADE BREAK LINE	
STORM SEWER MANHOLE	○ S	HIGH POINT	HP
SANITARY SEWER MANHOLE	○ S	LOW POINT	LP
TELEPHONE MANHOLE	○ T	CUT LINE	C
ELECTRIC MANHOLE	○ E	FILL LINE	F
TELEPHONE BOX	□ T	SANITARY SEWER PIPE	SAN
ELECTRIC BOX	□ E	SANITARY SEWER MANHOLE	
CABLE BOX	□ C	CURB	
UTILITY POLE	○ U	CONCRETE	
GUY WIRE	— G	CONSTRUCTION – ENTRANCE/EXIT	
LIGHT POLE	○ L	CHECK DAM	
POST OR POLE (TYPE AS NOTED)	○ P	DIVERSION BERM	
MAILBOX		DOWNDRAIN STRUCTURE – TEMPORARY	
DECIDUOUS TREE		ROCK DAM	
EVERGREEN/CONIFEROUS TREE		SEDIMENT BARRIER – SILT FENCE	
BUSH		SEDIMENT BARRIER – GRAVEL RING	
PROPERTY LINE		SEDIMENT BARRIER – BLOCK & GRAVEL	
SETBACK LINE		SEDIMENT BARRIER – BLOCK	
EASEMENT LINE		TEMPORARY SEDIMENT BASIN	
CURB		SILT FENCE – TYPE A	
FENCE	X — X	SILT FENCE – TYPE B	
OVERHEAD UTILITY	— OHP — OHP	SILT FENCE – TYPE C	
UNDERGROUND TELEPHONE	— UGT — UGT — UGT	STORM DRAIN OUTLET PROTECTION	
UNDERGROUND ELECTRIC	— UGE — UGE — UGE	SURFACE ROUGHENING	
WATER LINE	— 8"W — 8"W — 8"W	DISTURBED AREA STABILIZATION – TEMPORARY STABILIZATION	
SEWER LINE	— SAN —	DISTURBED AREA STABILIZATION – TEMPORARY GRASSING	
GAS LINE	— GAS — GAS — GAS	DISTURBED AREA STABILIZATION – PERMANENT GRASSING	
STORM SEWER/CULVERT	— 24" CMP/RCP/DIP —	MATTING/BLANKETS	
CONTOUR LINE			



PRICING OF ESTIMATED QUANTITIES			
CLR PROJECT# 16-7-DR-246			
OXFORD DRAINAGE IMPROVEMENTS			
May 8, 2018			
ITEM #	ITEM DESCRIPTION	UNIT	QUANTITY
2.01	Site Preparation	L.S.	1
3.01	Unclassified Excavation	C.Y.	650
3.40	Topsoil	C.Y.	50
10.04	Curb Inlet - 4' Box	EA	1
10.07	Wing, 3' Extension	EA	1
13.18P	Storm Drain Pipe, 18" HDPE	L.F.	280
13.61	Tie Into Existing Junction Box	EA	1
14.02	Solid Sod Special (Zoysia)	S.Y.	800
15.01	Shrub Replacement	EA	21
16.01	Maintenance of Traffic	L.S.	1
18.06	Fence Gates, 16' Dbl.	EA	2
18.11	Fence Removal	L.F.	750
19.01	Final Cleanup	L.S.	1
24.05	Rock Dam	EA	2
24.09	Sediment Barrier, Block (SD4)	EA	1
24.11	Silt Fence - Type A (SFA)	L.F.	800
24.17	Disturbed Area Stabilization - Temporary Grassing (TS2)	AC	1.00
24.18	Disturbed Area Stabilization - Permanent Grassing (TS3)	AC	1.00
25.16	Fence Wood 6'	LF	1,400.00
31.00	Concrete Ditch Paving	S.Y.	1,848
604.01	Precast Concrete Traffic Barrier (8' Length)	EA	4
606.18P	Flared End Section 18" HDPE	EA	1

REVISIONS	DATE

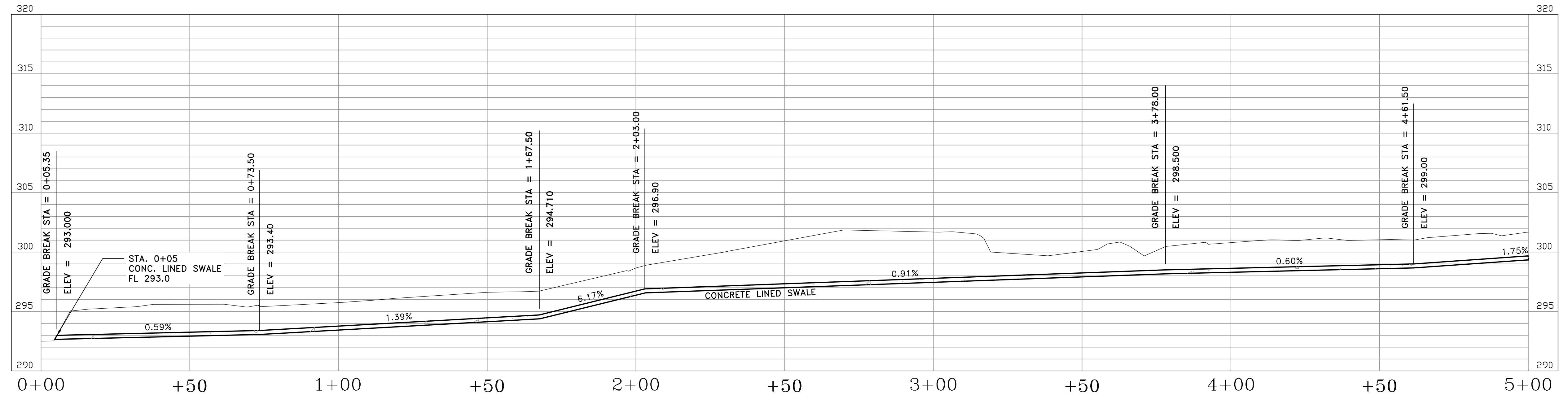
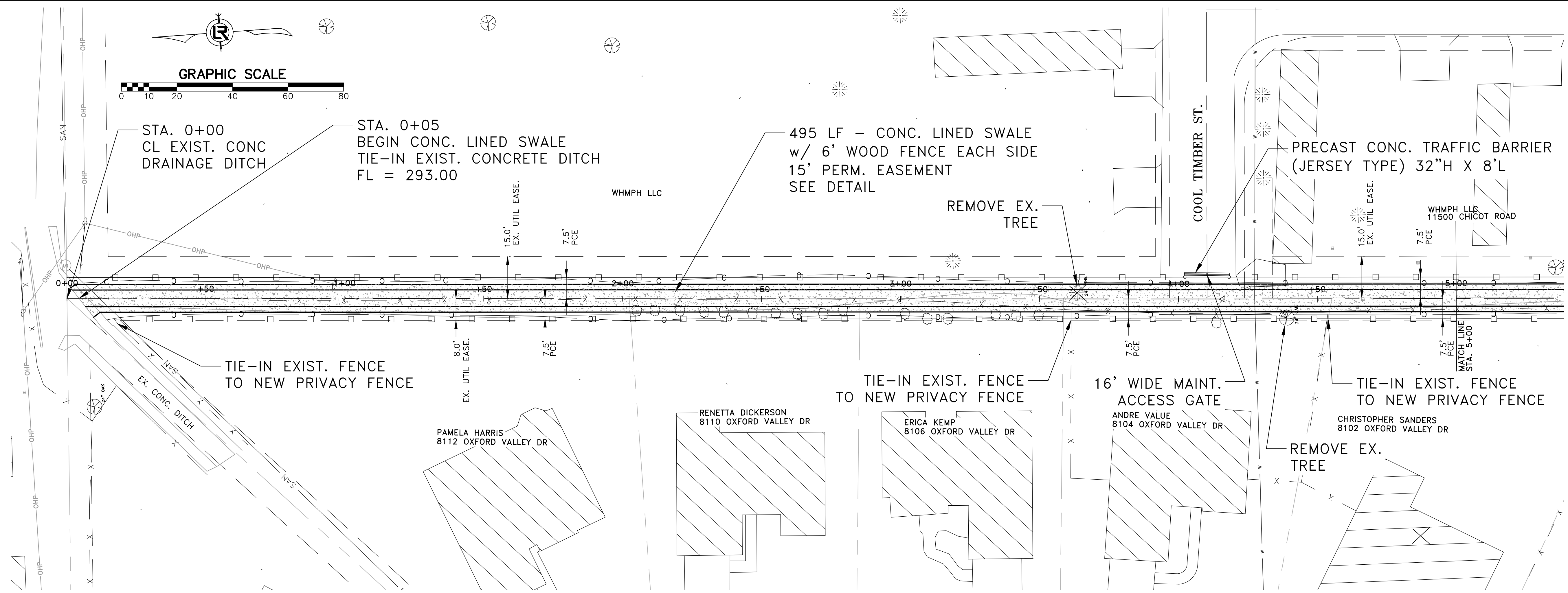
CITY OF LITTLE ROCK, ARKANSAS
 OXFORD VALLEY DRAINAGE

PLAN - PROFILE
 STA 0+00 TO 5+00

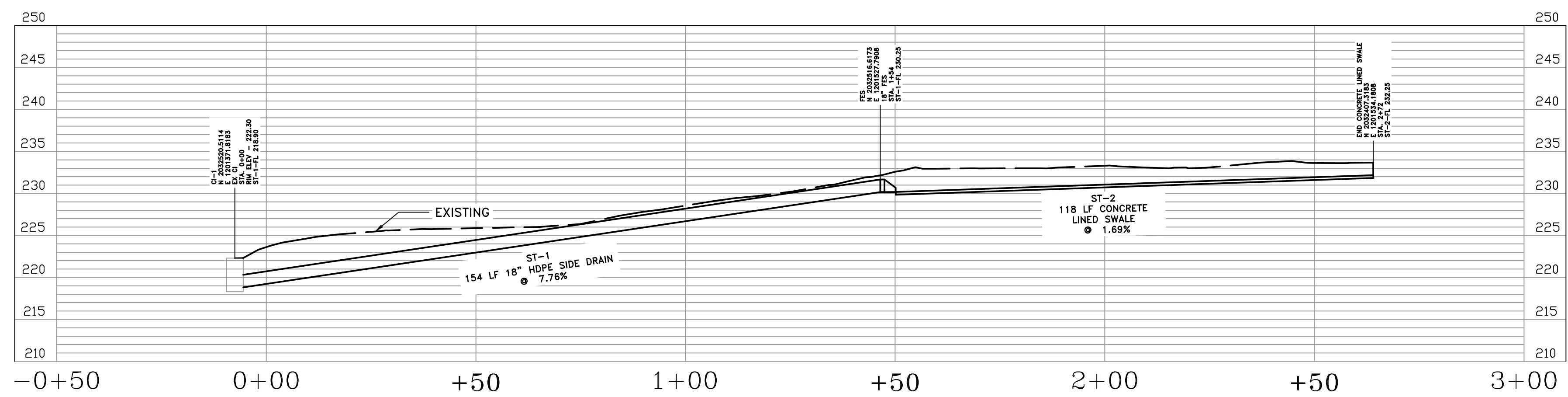
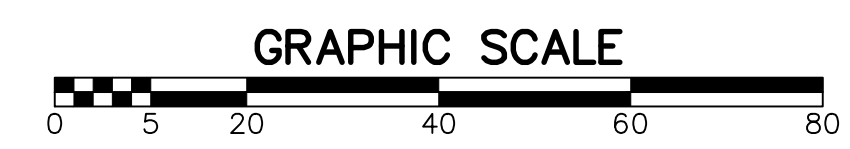
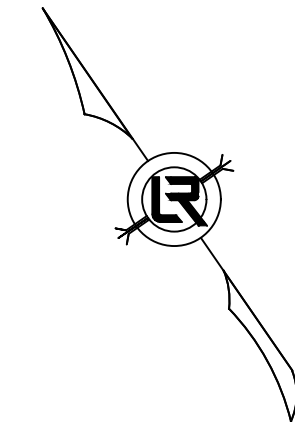
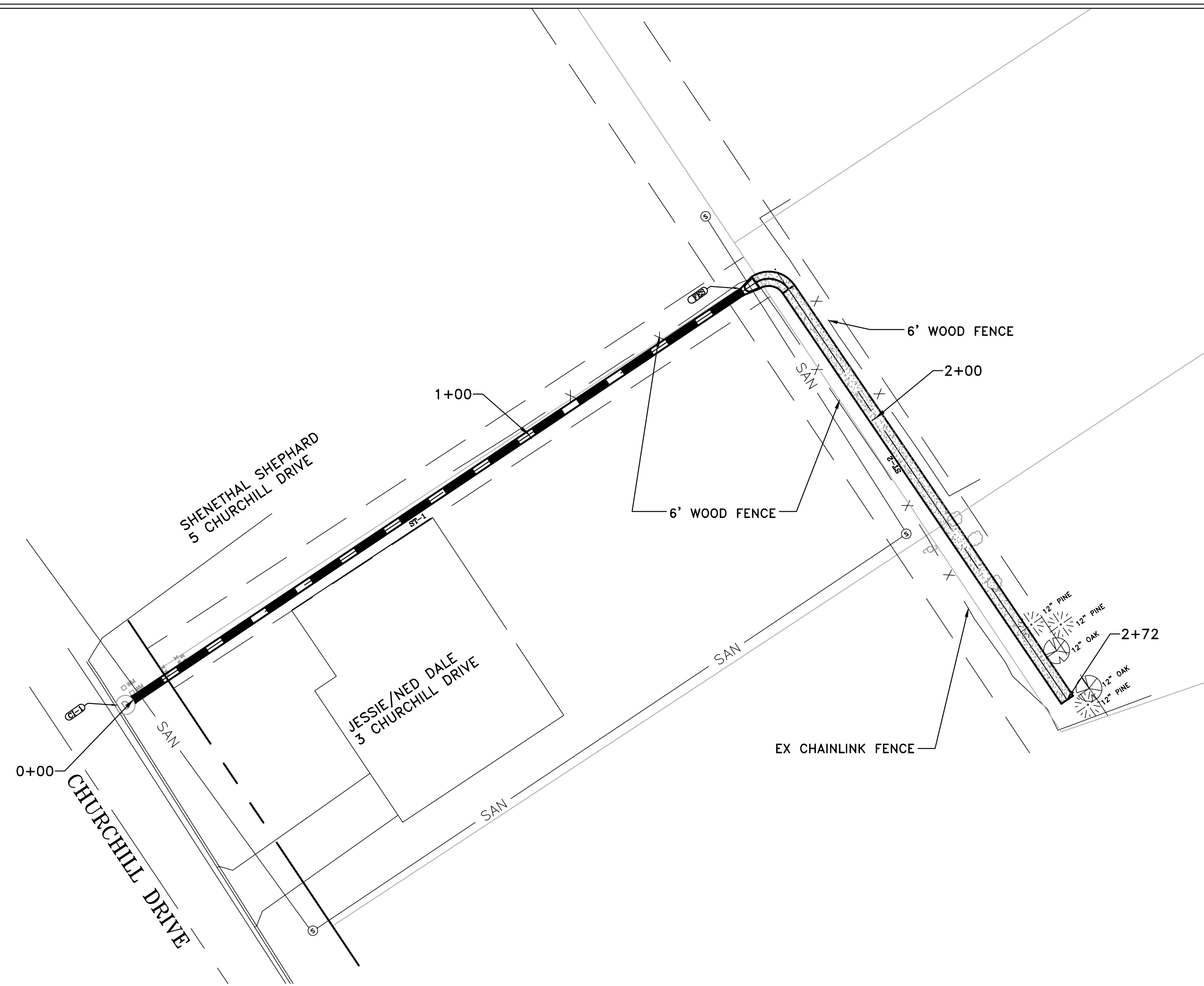
DEPARTMENT OF PUBLIC WORKS
 CIVIL ENGINEERING
 701 W. MARKHAM
 LITTLE ROCK, ARKANSAS 72201



DRAWN BY
 JHD
 DESIGNED
 JHD/BJB
 CHECKED
 BJB
 DATE
 06/01/2018
 SCALE
 H: 1"=10'
 V: 1"=5'
 PROJECT NO.
 16-7-DR-246
 SHEET NO.
 C3



OXFORD DRAINAGE



REVISIONS	DATE

CITY OF LITTLE ROCK, ARKANSAS
 OXFORD VALLEY DRAINAGE
 PLAN - PROFILE CHURCHILL DRIVE
 STA 0+00 TO 2+72

DEPARTMENT OF PUBLIC WORKS
 CIVIL ENGINEERING
 701 W. MARKHAM
 LITTLE ROCK, ARKANSAS 72201



DRAWN BY
 JHD
DESIGNED
 JHD/BJB
CHECKED
 BJB
DATE
 06/01/2018
SCALE
 H: 1"=20'
 V: 1"=5'
PROJECT NO.
 16-7-DR-246
SHEET NO.
 C5

REVISIONS	DATE

CITY OF LITTLE ROCK, ARKANSAS
OXFORD VALLEY DRAINAGE
 EROSION CONTROL

DEPARTMENT OF PUBLIC WORKS
 CIVIL ENGINEERING
 701 W. MARKHAM
 LITTLE ROCK, ARKANSAS 72201



DRAWN BY
 JHD
 DESIGNED
 JHD/BJB
 CHECKED
 BJB
 DATE
 06/01/2018
 SCALE
 H: 1"=10'
 V: 1"=5'
 PROJECT NO.
 16-7-DR-246
 SHEET NO.
 C6

