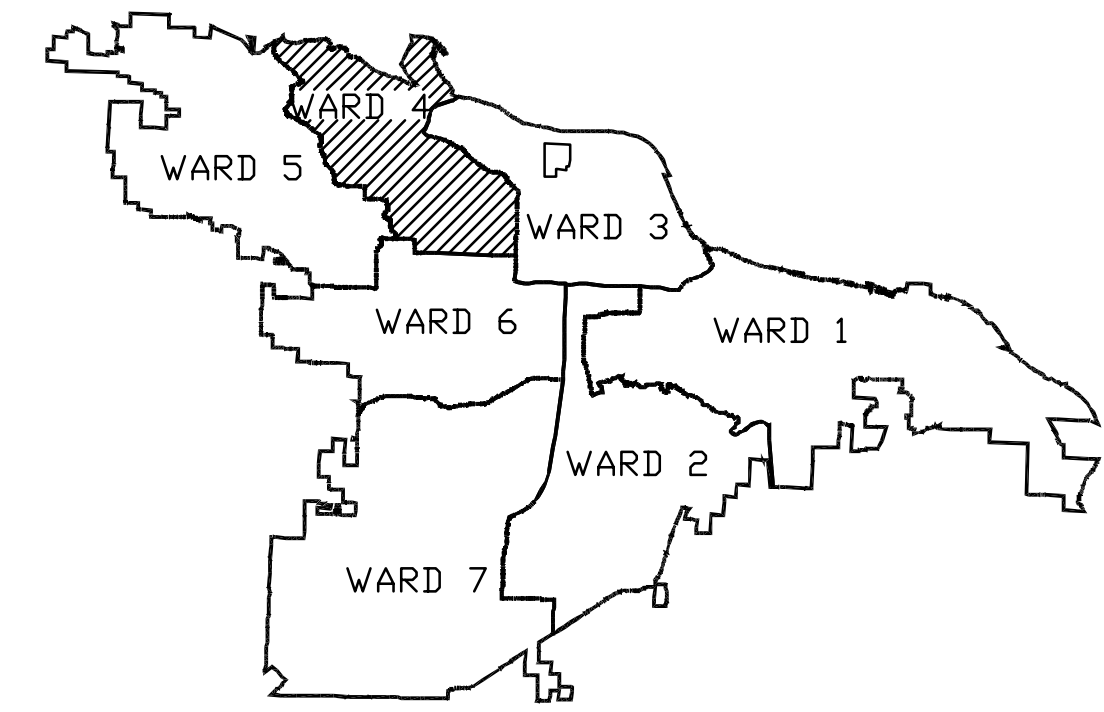
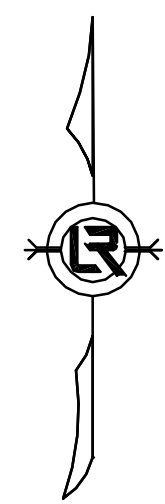
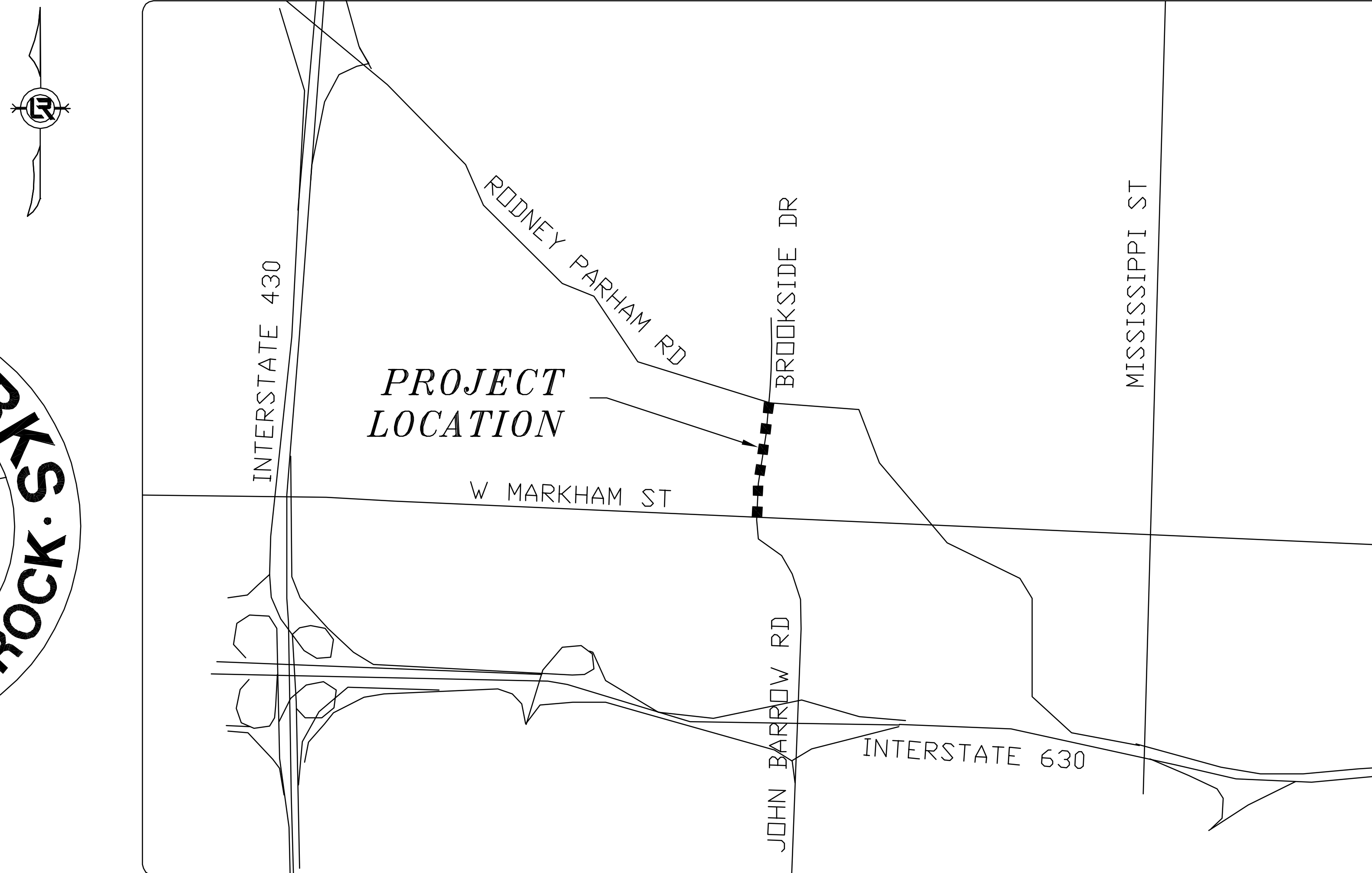


# CLR Project #16-4-SW-2 Brookside Drive Sidewalk



PROJECT LOCATION - WARD 4



DEPARTMENT OF PUBLIC WORKS  
CIVIL ENGINEERING  
701 WEST MARKHAM STREET  
LITTLE ROCK, ARKANSAS 72201

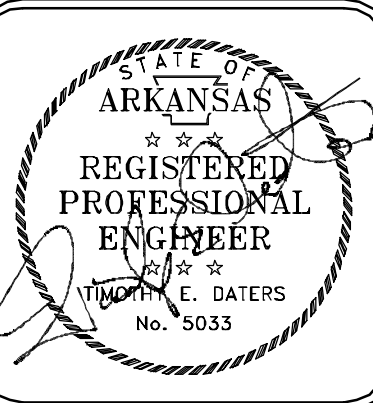
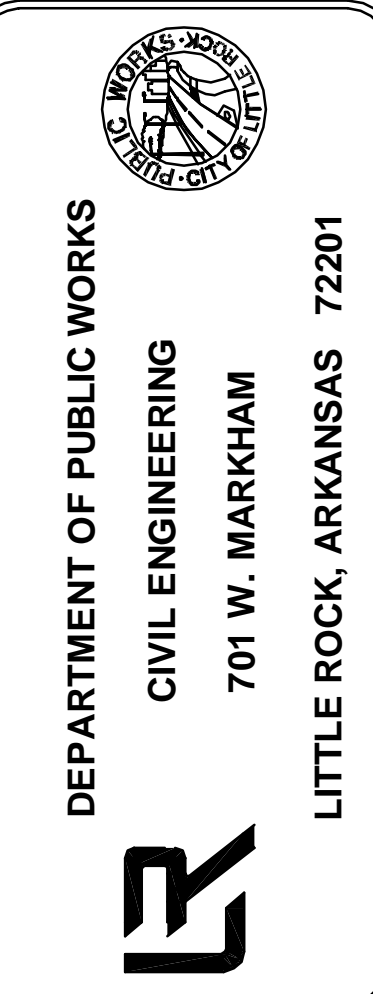
Sheet Number	Title
C1	Cover
C2	Legend
C3	Street Section
C4	Site Preparation 1
C5	Site Preparation 2
C6	Site Preparation 3
C7	Sidewalk Improvement 1
C8	Sidewalk Improvement 2
C9	Sidewalk Improvement 3
C10	Driveway Improvement 1
C11	Driveway Improvement 2
C12	Driveway Improvement 3
C13	Erosion Control
C14	Erosion Control
C15	Erosion Control



**WHITE-DATERS & ASSOCIATES, INC.**  
CIVIL ENGINEERING, LAND PLANNING & DEVELOPMENT, SURVEYING  
LANDSCAPE ARCHITECTURE & URBAN DESIGN  
24 RAHLING CIRCLE, LITTLE ROCK AR 72223  
PHONE (501) 821-1667  
FAX (501) 821-1668

REVISIONS	DATE

CITY OF LITTLE ROCK, ARKANSAS  
Brookside Drive Sidewalk  
COVER SHEET

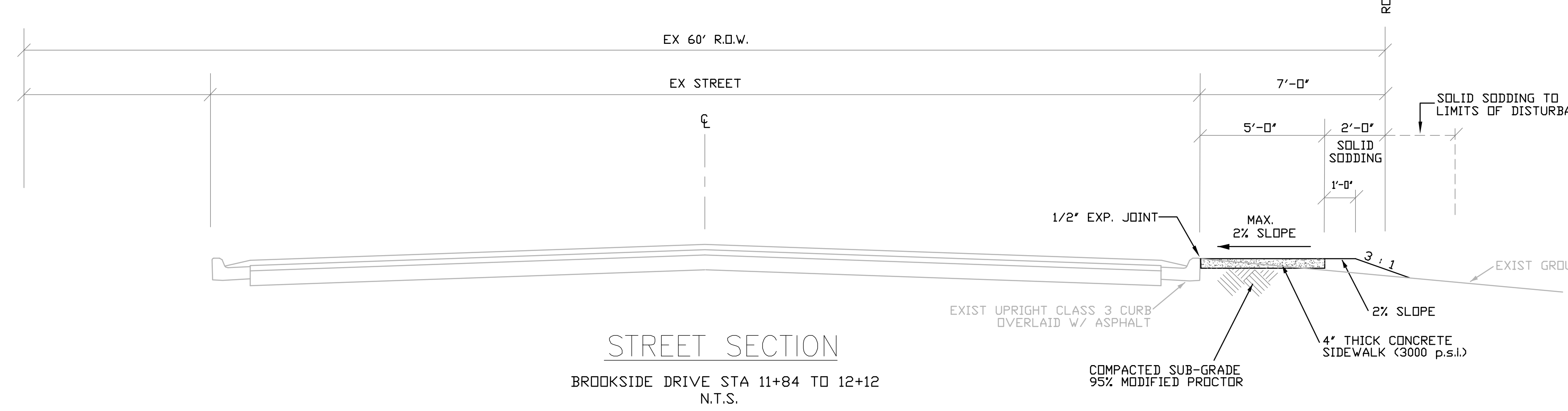
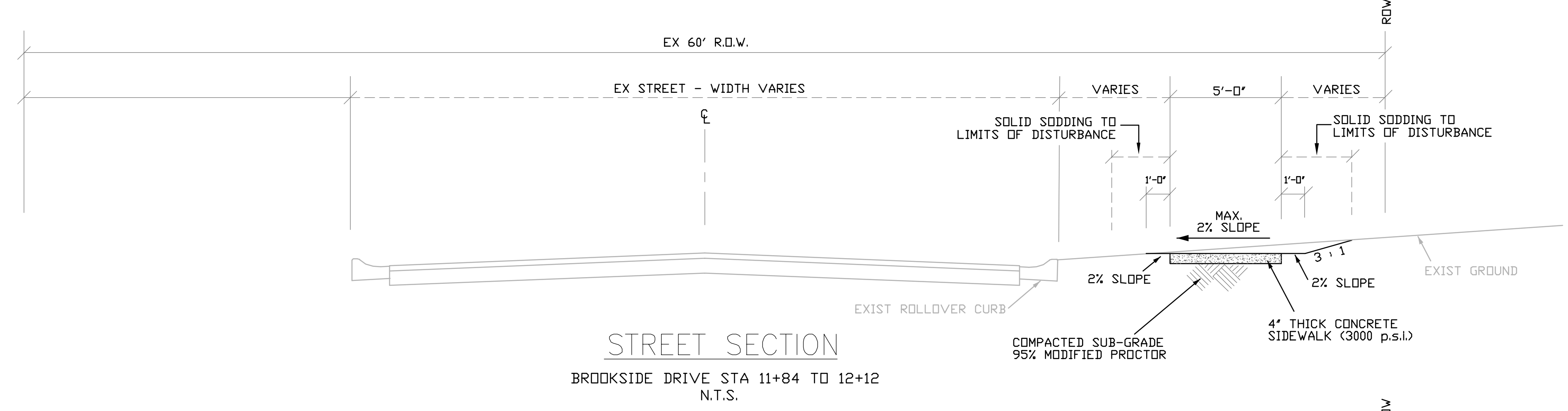
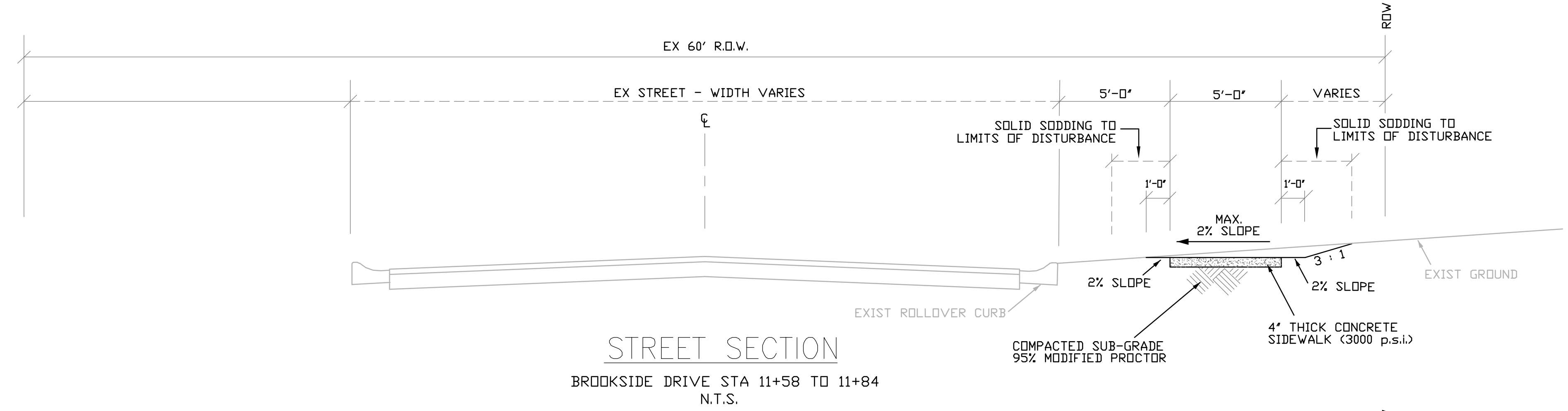
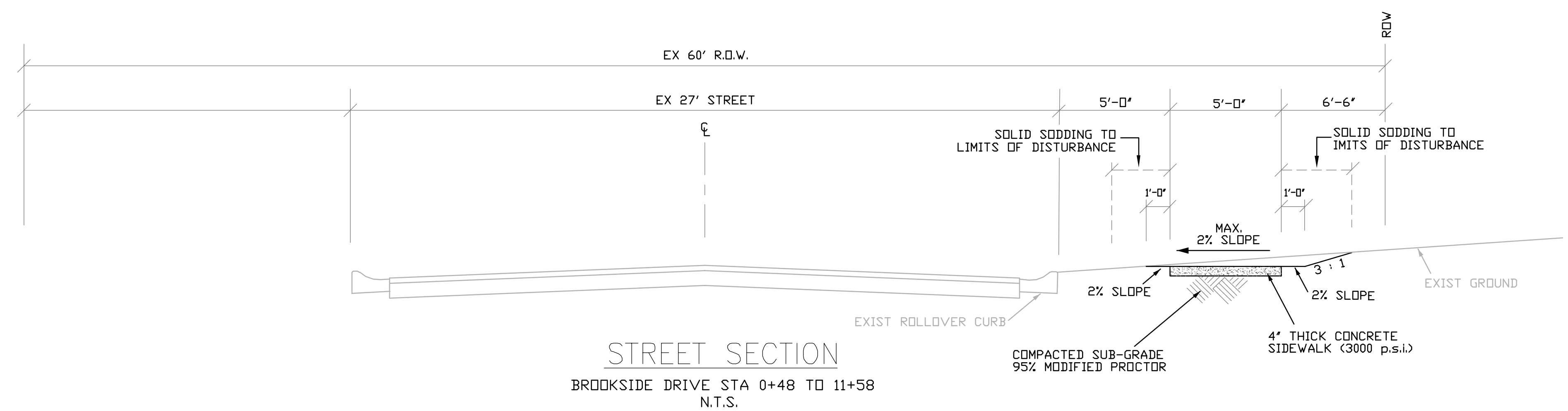


DRAWN BY
DESIGNED
CHECKED
DATE
07-17-2017
SCALE
PROJECT NO.
CLR #16-4-SW-2
SHEET NO.
C1

M:\2017\CLR\Civil\Drawn 2-17-2017 2:17:07 PM Job: White-Daters & Associates, Inc.



CITY OF LITTLE ROCK, ARKANSAS  
 Brookside Drive Sidewalk  
 STREET SECTION



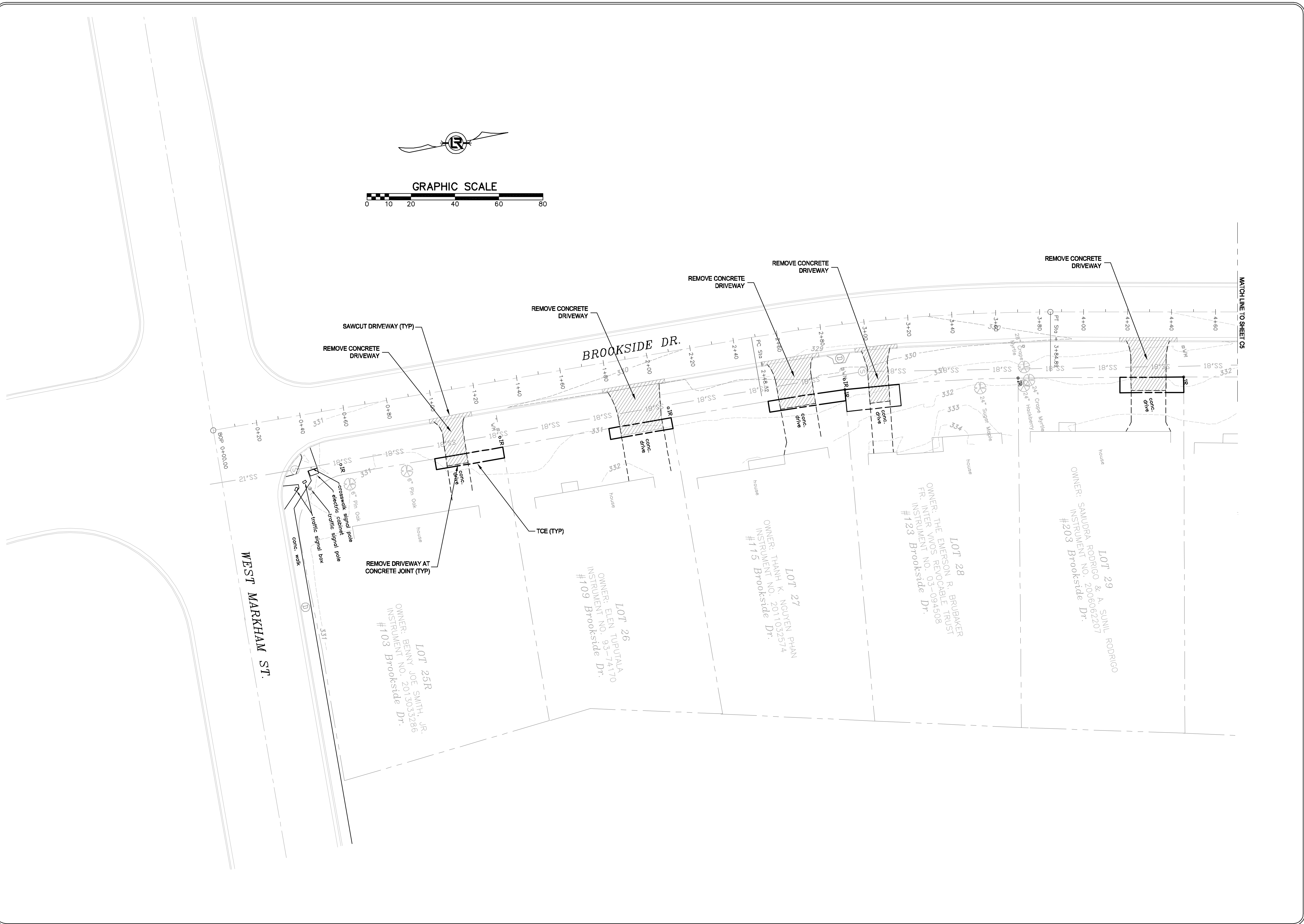
DEPARTMENT OF PUBLIC WORKS  
 CIVIL ENGINEERING  
 701 W. MARKHAM  
 LITTLE ROCK, ARKANSAS 72201

STATE OF ARKANSAS  
 REGISTERED PROFESSIONAL ENGINEER  
 E. DATERS  
 No. 5035

DRAWN BY  
 DESIGNED  
 CHECKED  
 DATE  
 07-17-2017  
 SCALE  
 PROJECT NO.  
 CLR #16-4-SW-2  
 SHEET NO.  
**C3**

M:\2017\CLR\Civil\Civil.dwg, 2/18/2018, 2:16:55 PM, Jhu, White-Daters & Associates, Inc.

M:\2017\CLR\Civil.dwg, 2/15/2018, 2:25:14 PM, JWH, White, Deters & Associates, Inc.



REVISIONS	DATE

**CITY OF LITTLE ROCK, ARKANSAS**  
**Brookside Drive Sidewalk**  
 SITE PREPARATION

DEPARTMENT OF PUBLIC WORKS  
 CIVIL ENGINEERING  
 701 W. MARKHAM  
 LITTLE ROCK, ARKANSAS 72201

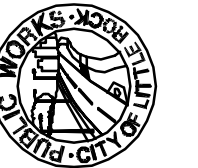
STATE OF ARKANSAS  
 REGISTERED PROFESSIONAL ENGINEER  
 JAMES E. DETERS  
 No. 5035

<b>DRAWN BY</b>
<b>DESIGNED</b>
<b>CHECKED</b>
<b>DATE</b> 07-17-2017
<b>SCALE</b>
<b>PROJECT NO.</b> CLR #16-4-SW-2
<b>SHEET NO.</b> C4

REVISIONS	DATE

CITY OF LITTLE ROCK, ARKANSAS  
Brookside Drive Sidewalk  
SITE PREPARATION

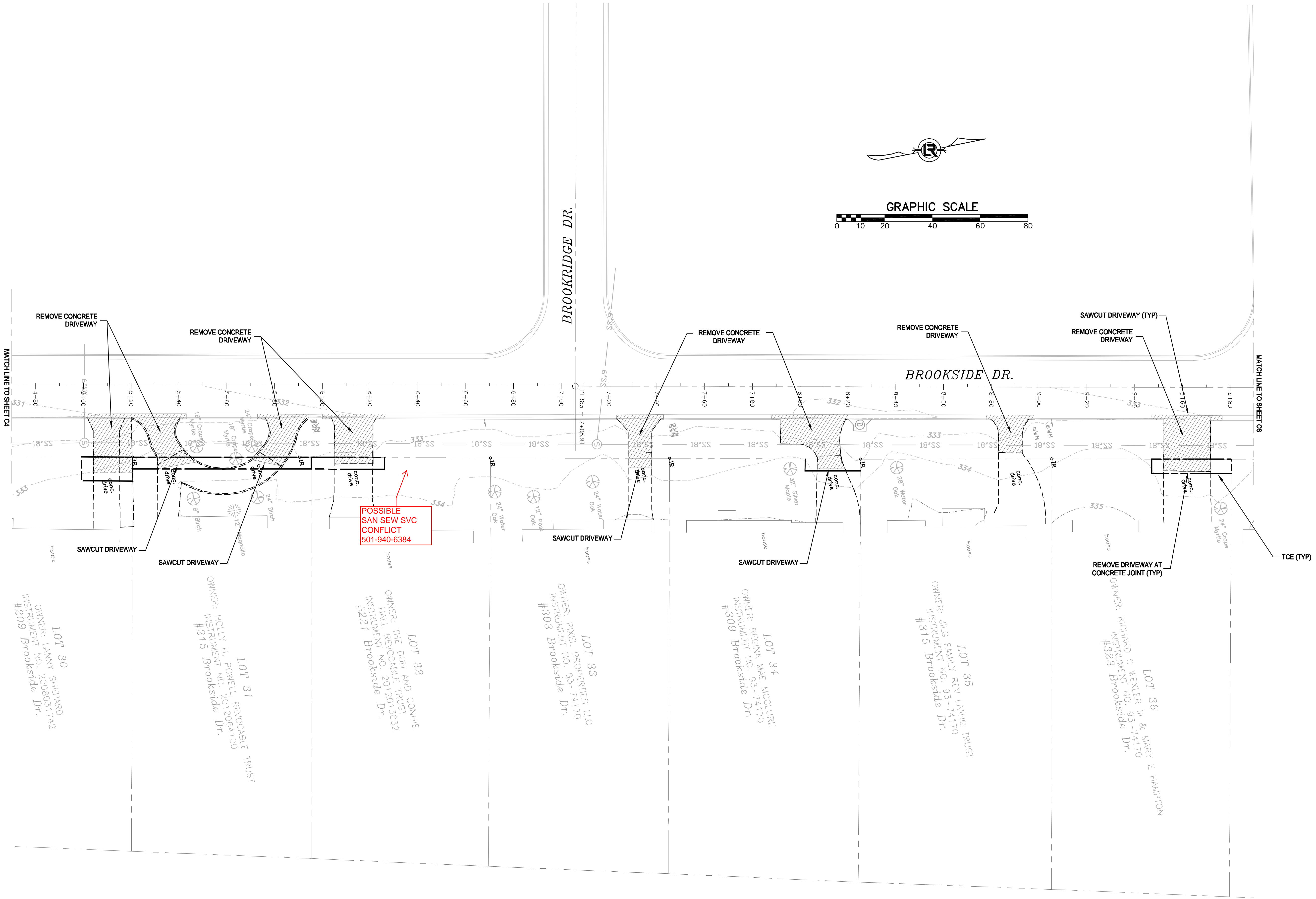
DEPARTMENT OF PUBLIC WORKS  
CIVIL ENGINEERING  
701 W. MARKHAM  
LITTLE ROCK, ARKANSAS 72201



STATE OF ARKANSAS  
REGISTERED PROFESSIONAL ENGINEER  
TERRY E. BATES  
No. 5035



DRAWN BY
DESIGNED
CHECKED
DATE 07-17-2017
SCALE
PROJECT NO. CLR #16-4-SW-2
SHEET NO. <b>C5</b>



M:\2017\CLR\Civil\Civil.dwg, 2/18/2018, 2:25:25 PM, Jhu, White, Bates & Associates, Inc.

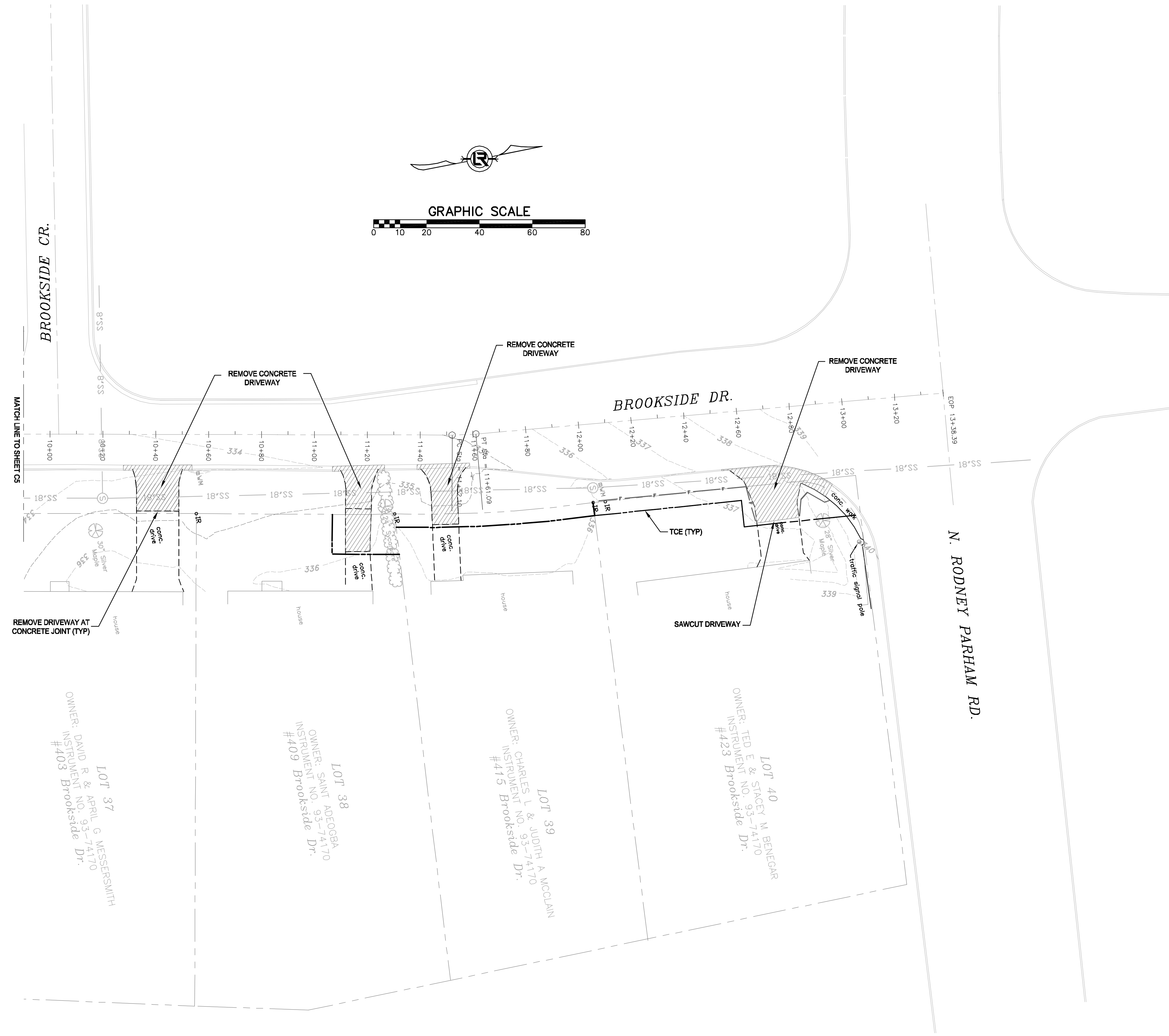
REVISIONS	DATE

**CITY OF LITTLE ROCK, ARKANSAS**  
**Brookside Drive Sidewalk**  
**SIDEWALK IMPROVEMENT**

**DEPARTMENT OF PUBLIC WORKS**  
**CIVIL ENGINEERING**  
**701 W. MARKHAM**  
**LITTLE ROCK, ARKANSAS 72201**



<b>DRAWN BY</b>
<b>DESIGNED</b>
<b>CHECKED</b>
<b>DATE</b> 07-17-2017
<b>SCALE</b>
<b>PROJECT NO.</b> CLR #16-4-SW-2
<b>SHEET NO.</b> <b>C6</b>



REVISIONS	DATE

CITY OF LITTLE ROCK, ARKANSAS  
 Brookside Drive Sidewalk  
 SIDEWALK IMPROVEMENT

DEPARTMENT OF PUBLIC WORKS  
 CIVIL ENGINEERING  
 701 W. MARKHAM  
 LITTLE ROCK, ARKANSAS 72201



DRAWN BY
DESIGNED
CHECKED
DATE 07-17-2017
SCALE
PROJECT NO. CLR #16-4-SW-2
SHEET NO. <b>C7</b>

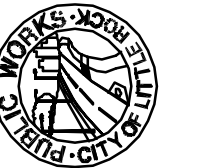


M:\2017\CLR\16-4-SW-2\16-4-SW-2.dwg, 3/20/17, 1:53:35 PM, SVA, White-Becker & Associates, Inc.

REVISIONS	DATE

CITY OF LITTLE ROCK, ARKANSAS  
 Brookside Drive Sidewalk  
 SIDEWALK IMPROVEMENT

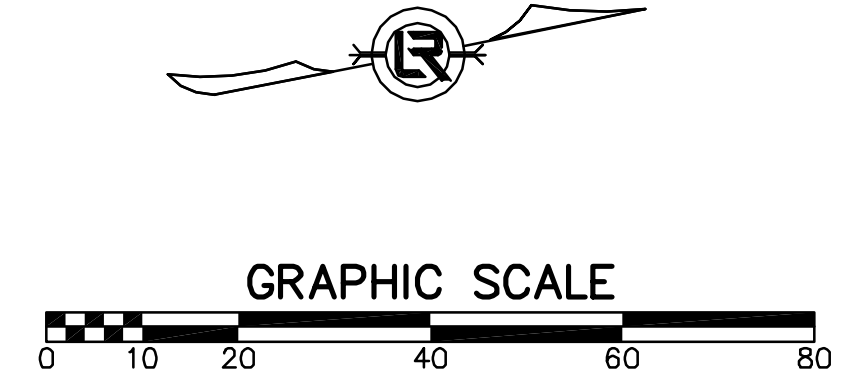
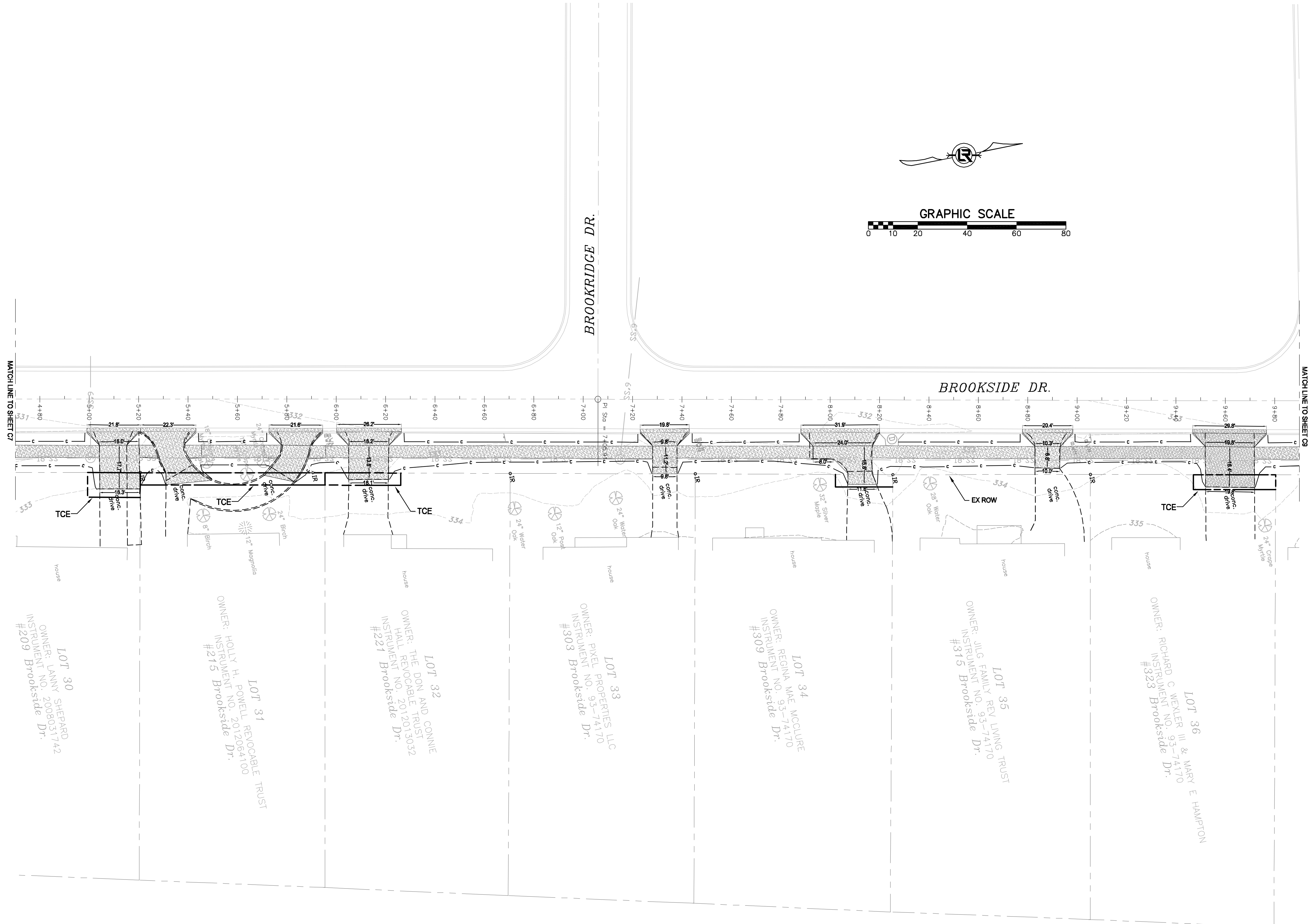
DEPARTMENT OF PUBLIC WORKS  
 CIVIL ENGINEERING  
 701 W. MARKHAM  
 LITTLE ROCK, ARKANSAS 72201



STATE OF ARKANSAS  
 REGISTERED PROFESSIONAL ENGINEER  
 TERRY E. BATES  
 No. 5035



DRAWN BY
DESIGNED
CHECKED
DATE 07-17-2017
SCALE
PROJECT NO. CLR #16-4-SW-2
SHEET NO. <b>C8</b>









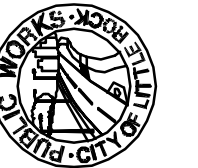




REVISIONS	DATE

**CITY OF LITTLE ROCK, ARKANSAS**  
**Brookside Drive Sidewalk**  
**EROSION CONTROL PLAN**

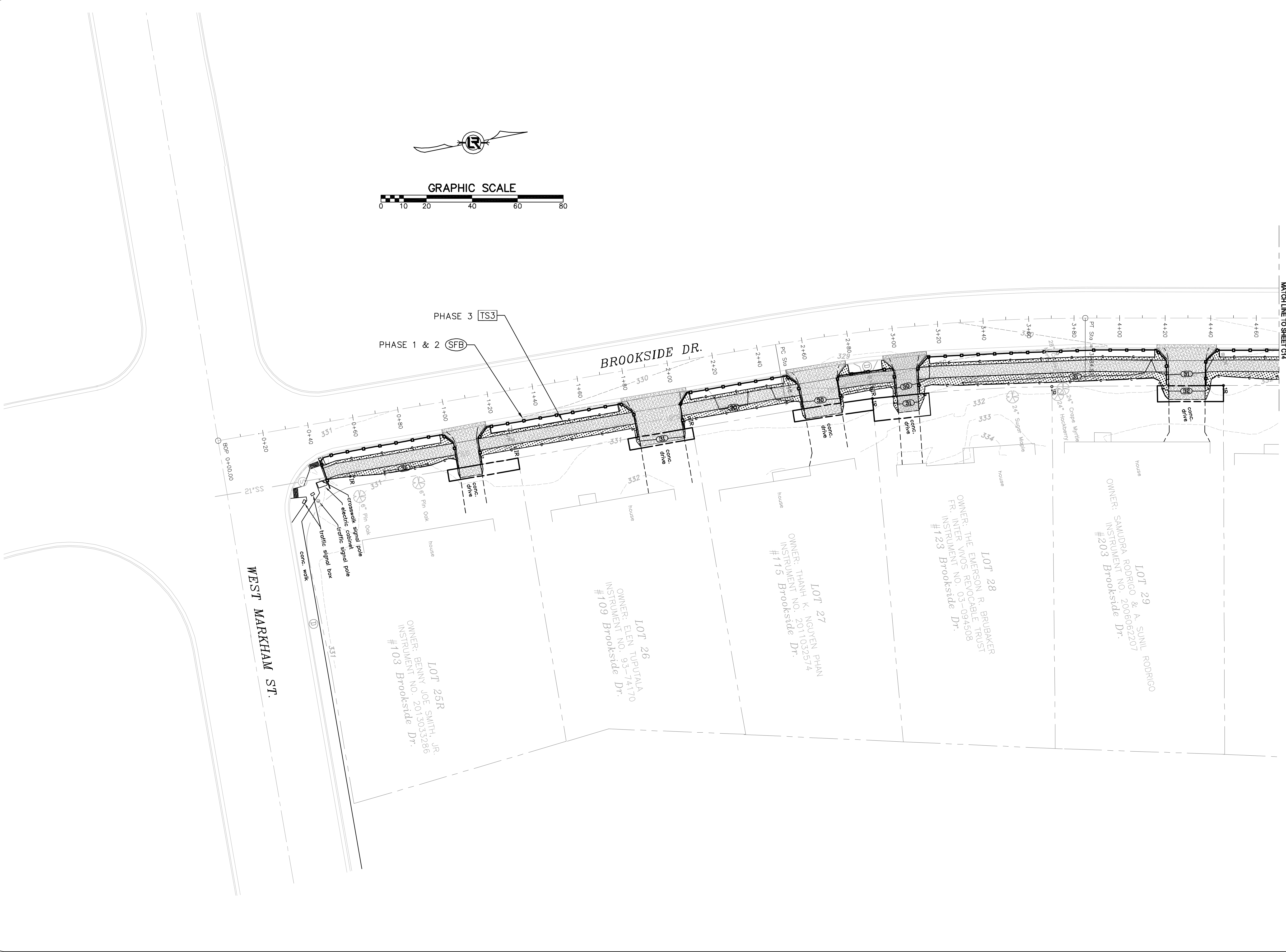
DEPARTMENT OF PUBLIC WORKS  
 CIVIL ENGINEERING  
 701 W. MARKHAM  
 LITTLE ROCK, ARKANSAS 72201



STATE OF ARKANSAS  
 REGISTERED PROFESSIONAL ENGINEER  
 F. B. BATES  
 No. 5035



<b>DRAWN BY</b>
<b>DESIGNED</b>
<b>CHECKED</b>
<b>DATE</b> 07-17-2017
<b>SCALE</b>
<b>PROJECT NO.</b> CLR #16-4-SW-2
<b>SHEET NO.</b> <b>C13</b>

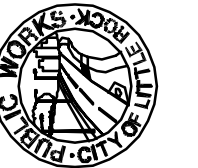


M:\2017\CLR\16-4-SW-2\16-4-SW-2.dwg, 3/20/17, 1:49:16 PM, User: William Bates & Associates, Inc.

REVISIONS	DATE

**CITY OF LITTLE ROCK, ARKANSAS**  
**Brookside Drive Sidewalk**  
**EROSION CONTROL PLAN**

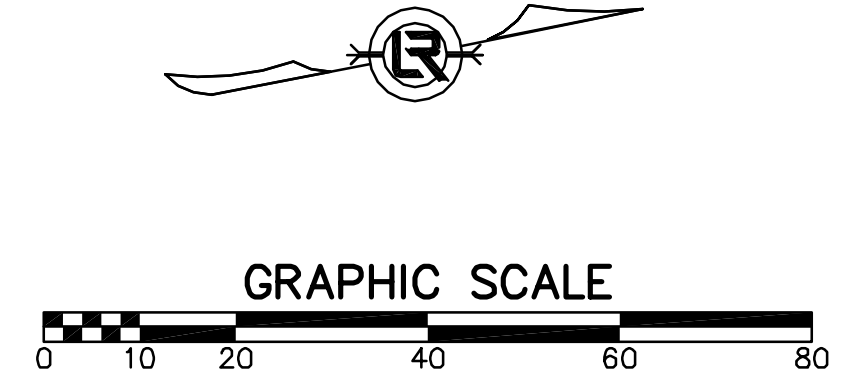
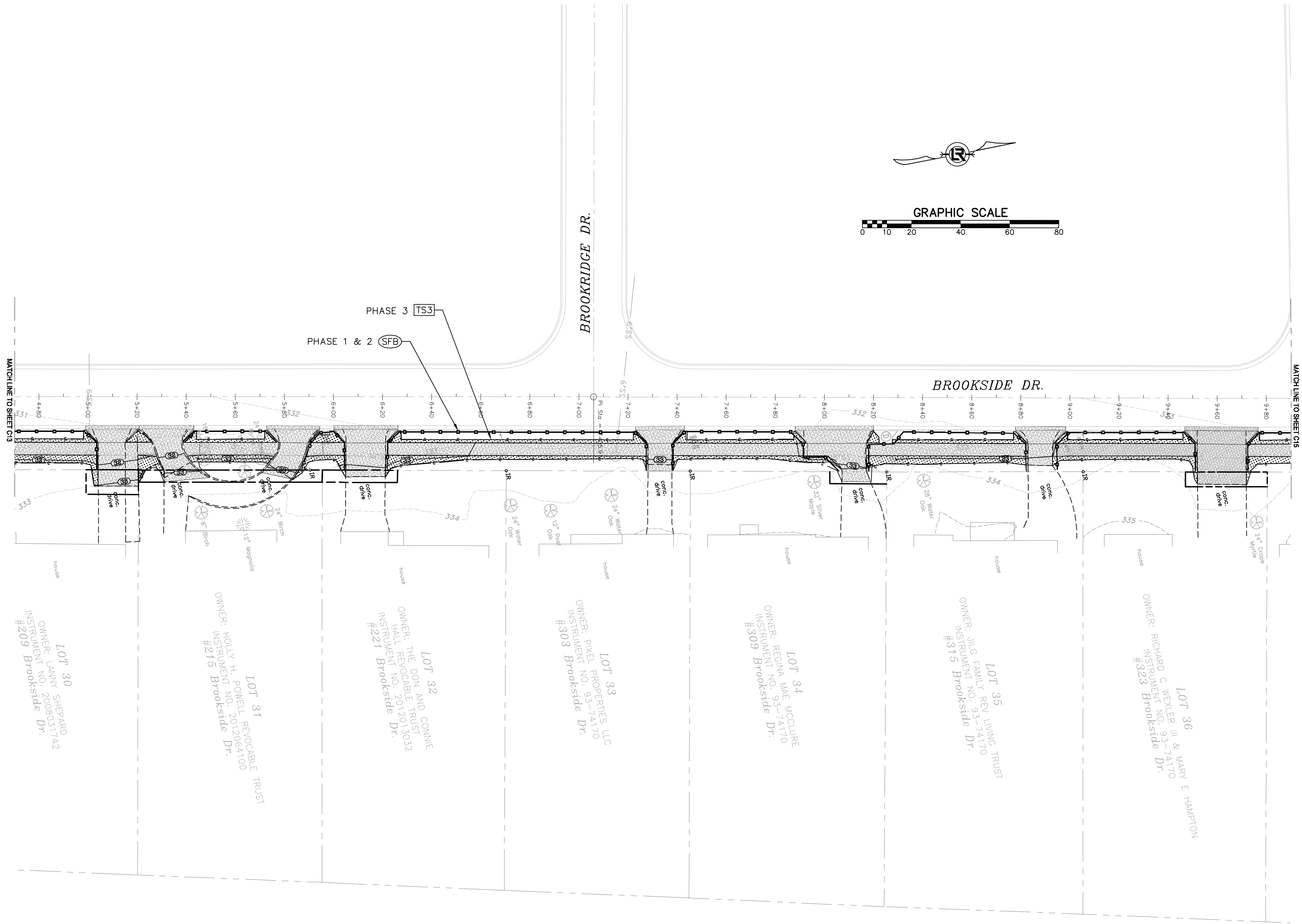
**DEPARTMENT OF PUBLIC WORKS**  
**CIVIL ENGINEERING**  
**701 W. MARKHAM**  
**LITTLE ROCK, ARKANSAS 72201**

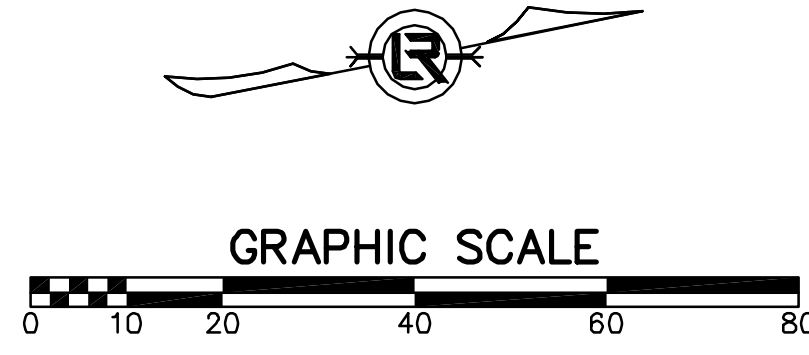
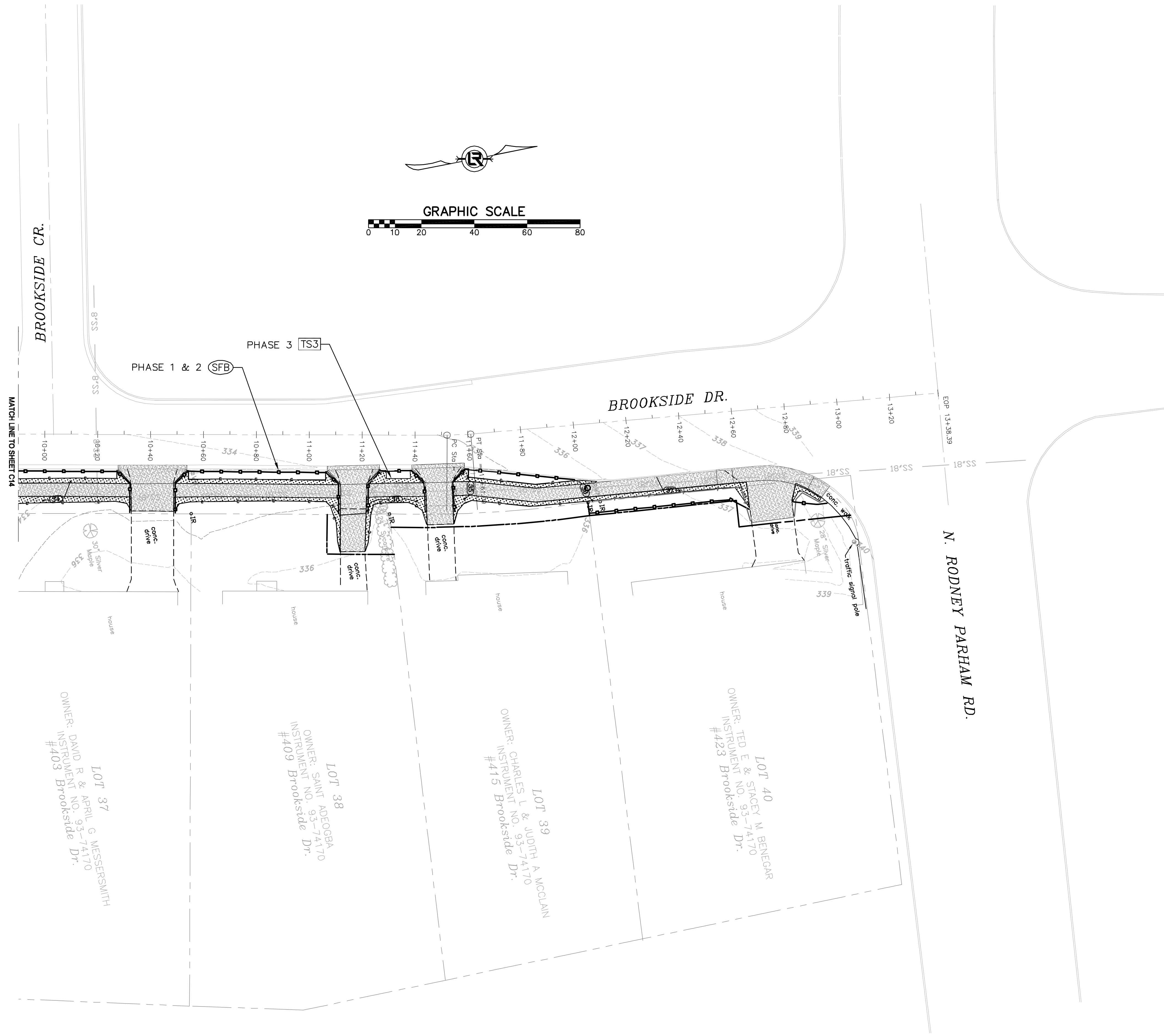


STATE OF ARKANSAS  
REGISTERED PROFESSIONAL ENGINEER  
**W. E. DETERS**  
No. 5035



<b>DRAWN BY</b>
<b>DESIGNED</b>
<b>CHECKED</b>
<b>DATE</b> 07-17-2017
<b>SCALE</b>
<b>PROJECT NO.</b> CLR #16-4-SW-2
<b>SHEET NO.</b> <b>C14</b>





REVISIONS	DATE

CITY OF LITTLE ROCK, ARKANSAS  
Brookside Drive Sidewalk  
EROSION CONTROL PLAN

DEPARTMENT OF PUBLIC WORKS  
CIVIL ENGINEERING  
701 W. MARKHAM  
LITTLE ROCK, ARKANSAS 72201

STATE OF ARKANSAS  
REGISTERED PROFESSIONAL ENGINEER  
T. E. DATERS  
No. 5035

DRAWN BY
DESIGNED
CHECKED
DATE 07-17-2017
SCALE
PROJECT NO. CLR #16-4-SW-2
SHEET NO. <b>C15</b>