
appendix b: soils

Table B1: Soil Suitability

CLASS	CLASS NAME	DEGREE OF LIMITATION FOR CONSTRUCTION	DEGREE OF LIMITATION FOR RECREATIONAL USES
Am	Amy silt loam	Severe	Severe
Ao	Amy silt loam, flooded	Severe	Severe
ApB	Amy complex, undulating	Severe	Severe
Au	Amy-Urban land complex	Severe	Severe
Bs	Bruno fine sandy loam	Slight - severe	Slight
Bu	Bruno-Urban land complex	Slight - severe	Slight
CaC	Carnasaw gravelly silt loam, 3-8 % slopes	Severe	Slight - moderate
CaD	Carnasaw gravelly silt loam, 8-12 % slopes	Severe	Moderate
CbC	Carnasaw-Urban land complex, 3-8 % slopes	Severe	Slight - moderate
CbD	Carnasaw-Urban land complex, 8-12 % slopes	Severe	Moderate
CMC	Carnasaw-Mountainburg, undulating	Severe	Slight - moderate
CMF	Carnasaw-Mountainburg, steep	Severe	Moderate
Cr	Crevasse fine sand	Slight - severe	Moderate - severe
GeB	Guthrie-Leadvale complex, undulating	Severe	Severe
Ko	Keo silt loam	Moderate	Slight
Ku	Keo-Urban land complex	Moderate	Slight
La	Latanier silty clay	Severe	Severe
LdB	Leadvale-Urban land complex, 1-3 % slopes	Moderate	Slight - moderate
LdC	Leadvale-Urban land complex, 3-8 % slopes	Moderate	Slight - moderate
LeB	Leadvale silt loam, 1-3 % slopes	Moderate	Slight - moderate
LeC	Leadvale silt loam, 3-8 % slopes	Moderate	Slight - moderate
LkC	Linker gravelly fine sandy loam, 3-8 % slopes	Moderate - severe	Slight
LnC	Linker-Urban land complex, 3-8 % slopes	Moderate - severe	Slight
LRE	Linker-Mountainburg, moderately steep	Moderate - severe	Moderate

Table B1: Soils Suitability, continued

CLASS	CLASS NAME	DEGREE OF LIMITATION FOR CONSTRUCTION	DEGREE OF LIMITATION FOR RECREATIONAL USES
Me	Moreland silty clay	Severe	Severe
MoD	Mountainburg stony fine sandy loam, 3-12 % slopes	Severe	Moderate
MuD	Mountainburg-Urban land complex, 3-12 % slopes	Severe	Moderate
MuE	Mountainburg-Urban land complex, 12-40 % slopes	Severe	Not Rated
No	Norwood silty clay loam	Slight - moderate	Moderate
Pe	Perry clay	Severe	Severe
Pu	Perry-Urban land complex	Severe	Severe
Re	Rexor silt loam, frequently flooded	Severe	Moderate - severe
Rf	Rexor-Urban land complex, frequently flooded	Severe	Moderate - severe
RmA	Rilla silt loam, 0-1 % slopes	Moderate	Slight
RMC	Rilla silt loam, 3-5 % slopes	Moderate	Slight
RuA	Rilla-Urban land complex, 0-1 % slopes	Moderate	Slight
SfC	Saffell-Urban land complex, 3-8 % slopes	Slight	Slight
SgB	Sallisaw gravelly silt loam, 1-3 % slopes	Moderate	Moderate
SgC	Sallisaw gravelly silt loam, 3-8% slopes	Moderate	Moderate
ShC	Sallisaw-Urban land complex, 3-8 % slopes	Moderate	Moderate
SKC	Sallisaw-Leadvale association, undulating	Moderate	Moderate
StC	Smithdale fine sandy loam, 3-8 % slopes	Slight - moderate	Slight
StD	Smithdale fine sandy loam, 8-12 % slopes	Slight - moderate	Moderate
SuC	Smithdale-Urban land complex, 3-8 % slopes	Slight - moderate	Slight
TaB	Tiak fine sandy loam, 1-3 % slopes	Severe	Slight - moderate
TuC	Tiak-Urban land complex, 3-8 % slopes	Severe	Slight - moderate
Ut	Urban land	Variable; onsite investigation needed	Variable; onsite investigation needed
Wt	Wrightsville silt loam	Severe	Severe
Wu	Wrightsville-Urban land complex	Severe	Severe

Figure B2: Soil Suitability - Built Uses

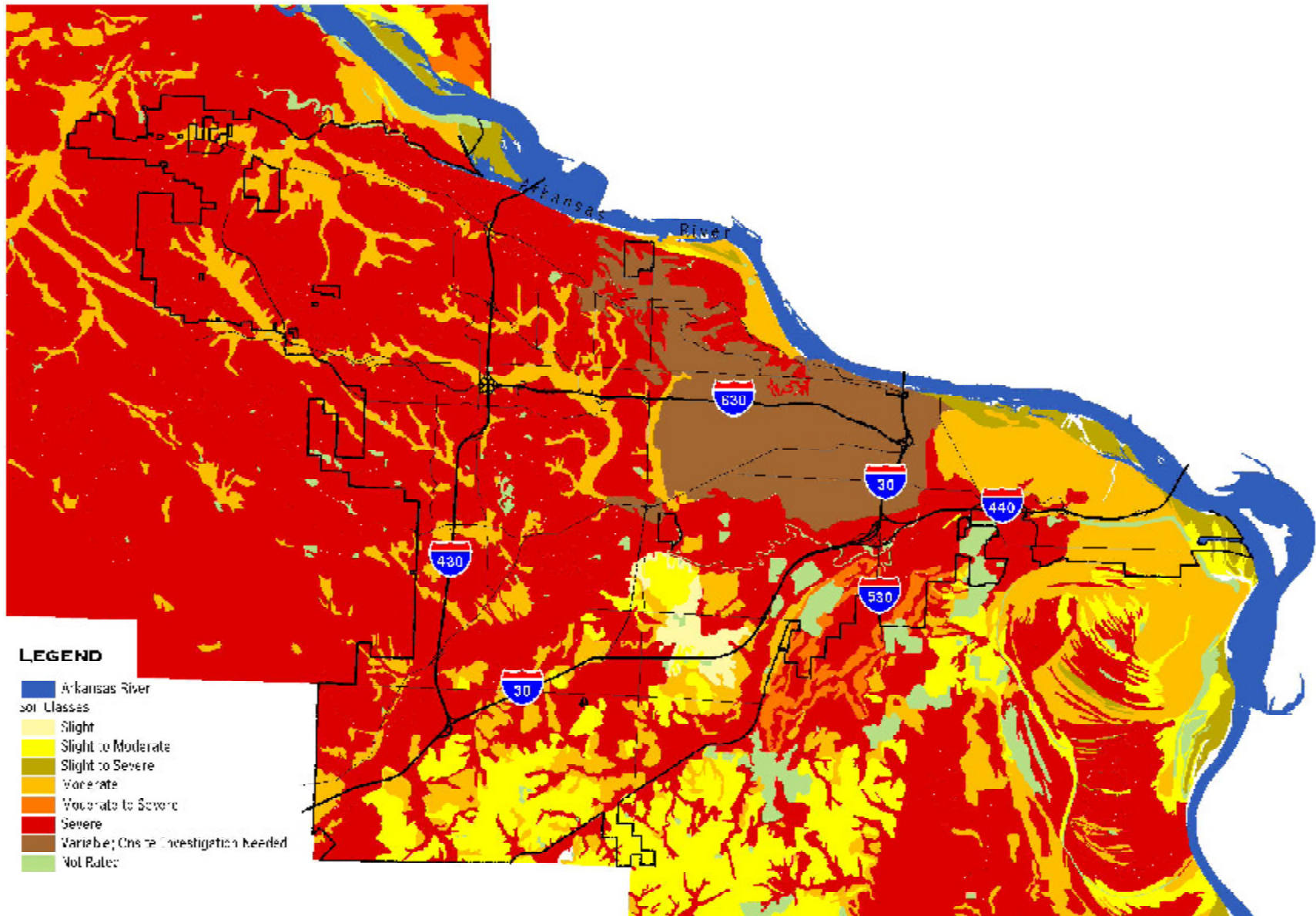


Figure B3: Soil Suitability - Recreational Uses

