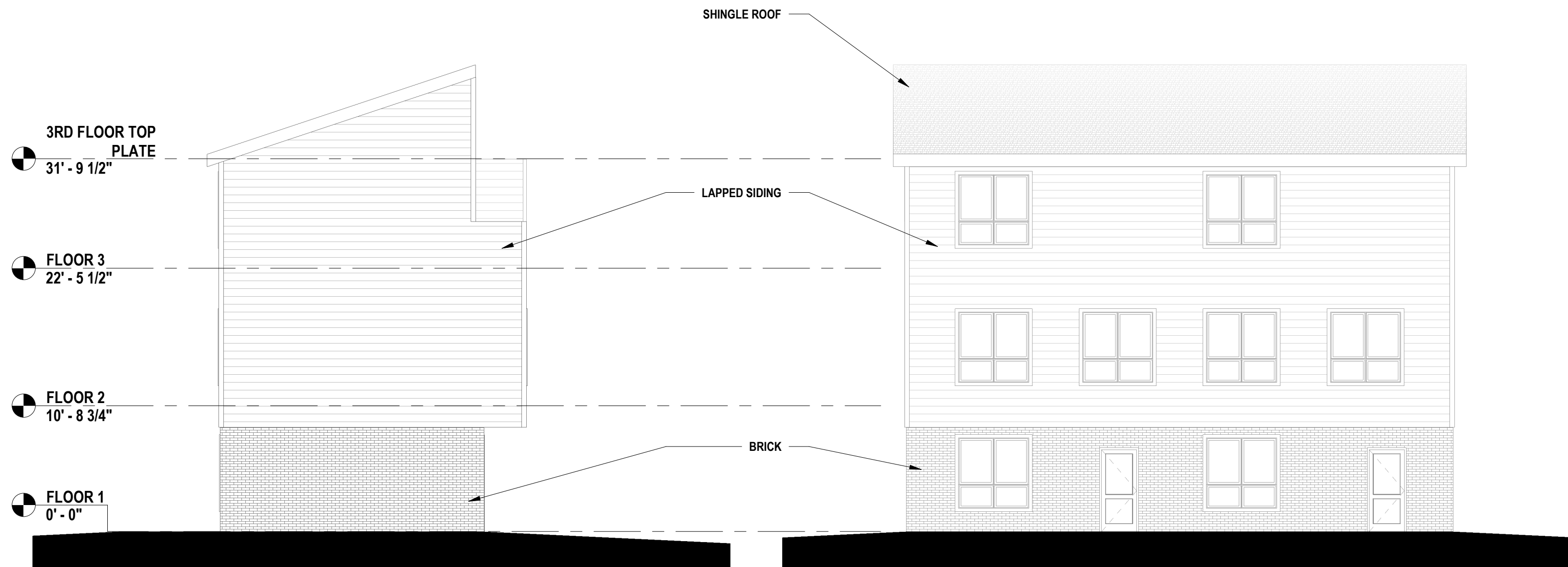


**2** NORTH ELEVATION  
 1/8" = 1'-0"

**1** EAST ELEVATION  
 1/8" = 1'-0"

25 JULY 2018



**2 SOUTH ELEVATION**  
 1/8" = 1'-0"

**1 WEST ELEVATION**  
 1/8" = 1'-0"

25 JULY 2018