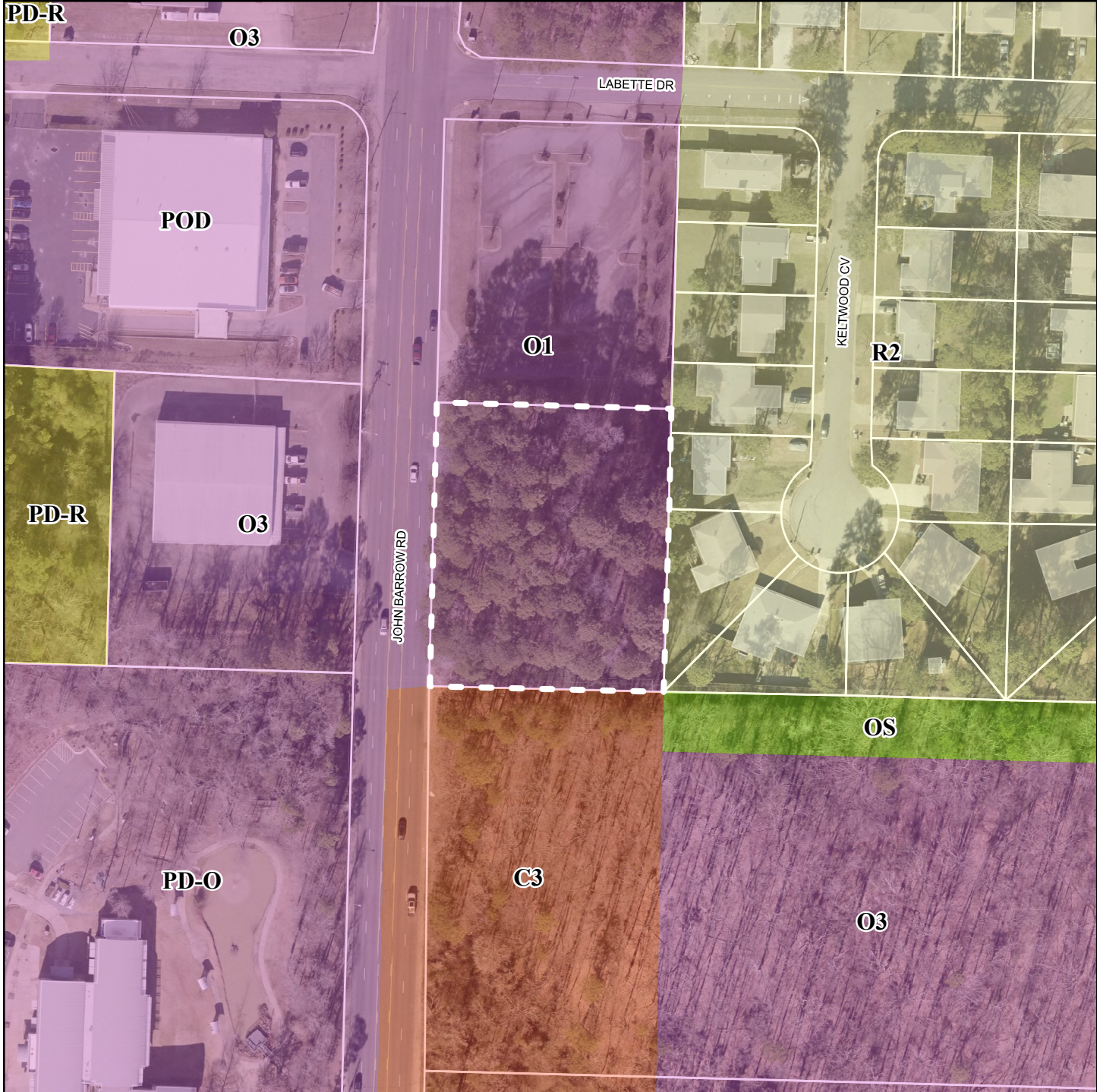


LU2025-10-01	E. SIDE of JOHN BARROW ROAD, APPROX. 250' S. of LABETTE DR.	Planning Commission JANUARY 8, 2026
Zoning		



Legend

- OPEN SPACE
- SINGLE FAMILY
- PLANNED RESIDENTIAL
- COMMERCIAL
- OFFICE
- Parcel Lines

DEPARTMENT OF
PLANNING & DEVELOPMENT