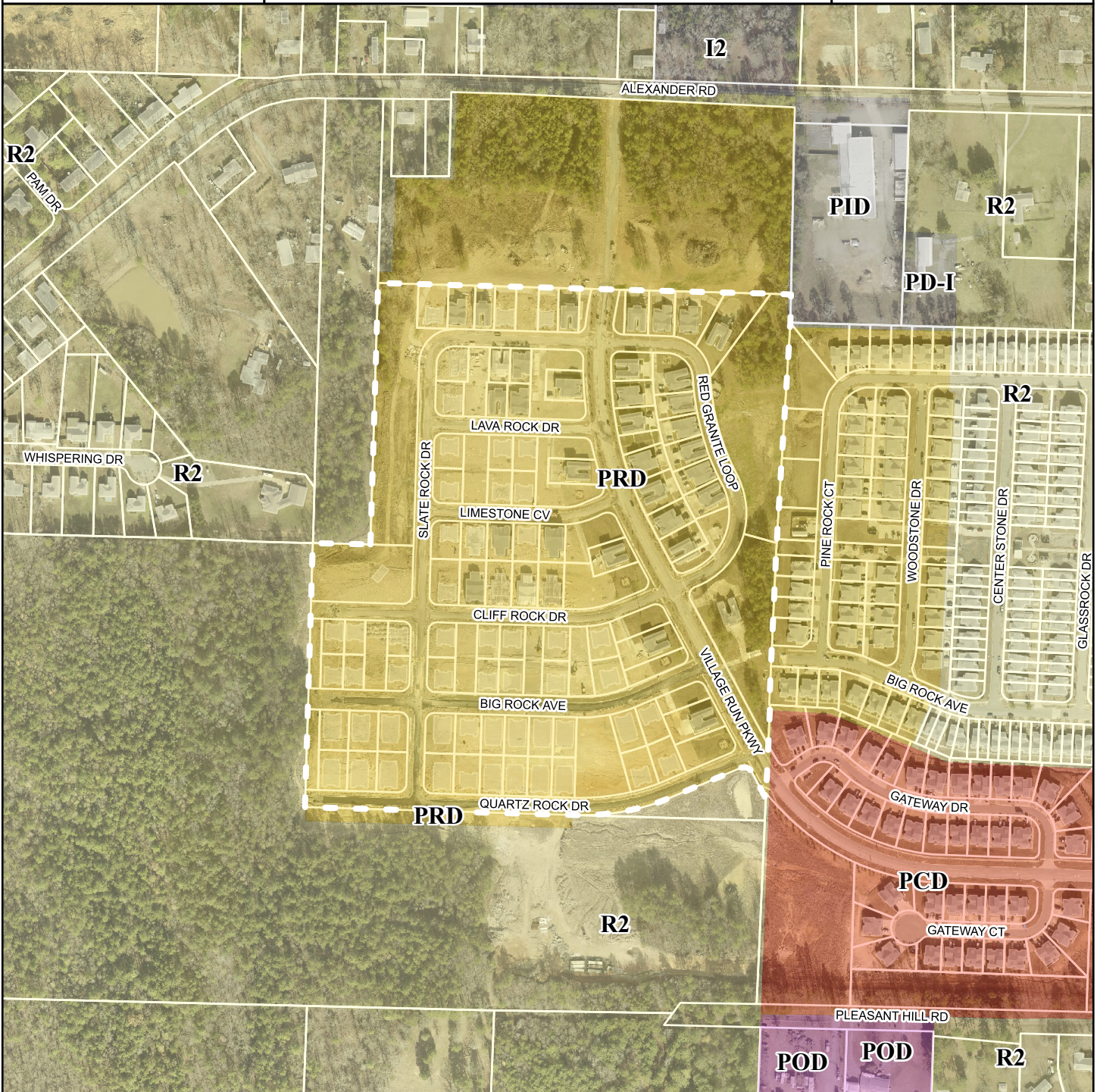


Z-9407-D

Zoning

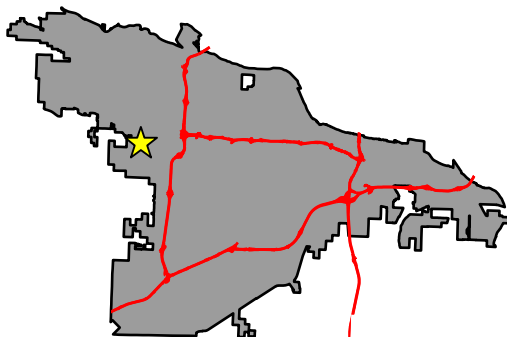
WEST of VILLAGE RUN PKWY.,  
NORTH of BIG ROCK AVE.

Planning Commission  
DECEMBER 11, 2025



Legend

- INDUSTRIAL
- SINGLE FAMILY
- PLANNED RESIDENTIAL
- COMMERCIAL
- OFFICE
- Parcel Lines



DEPARTMENT OF  
**PLANNING &  
DEVELOPMENT**