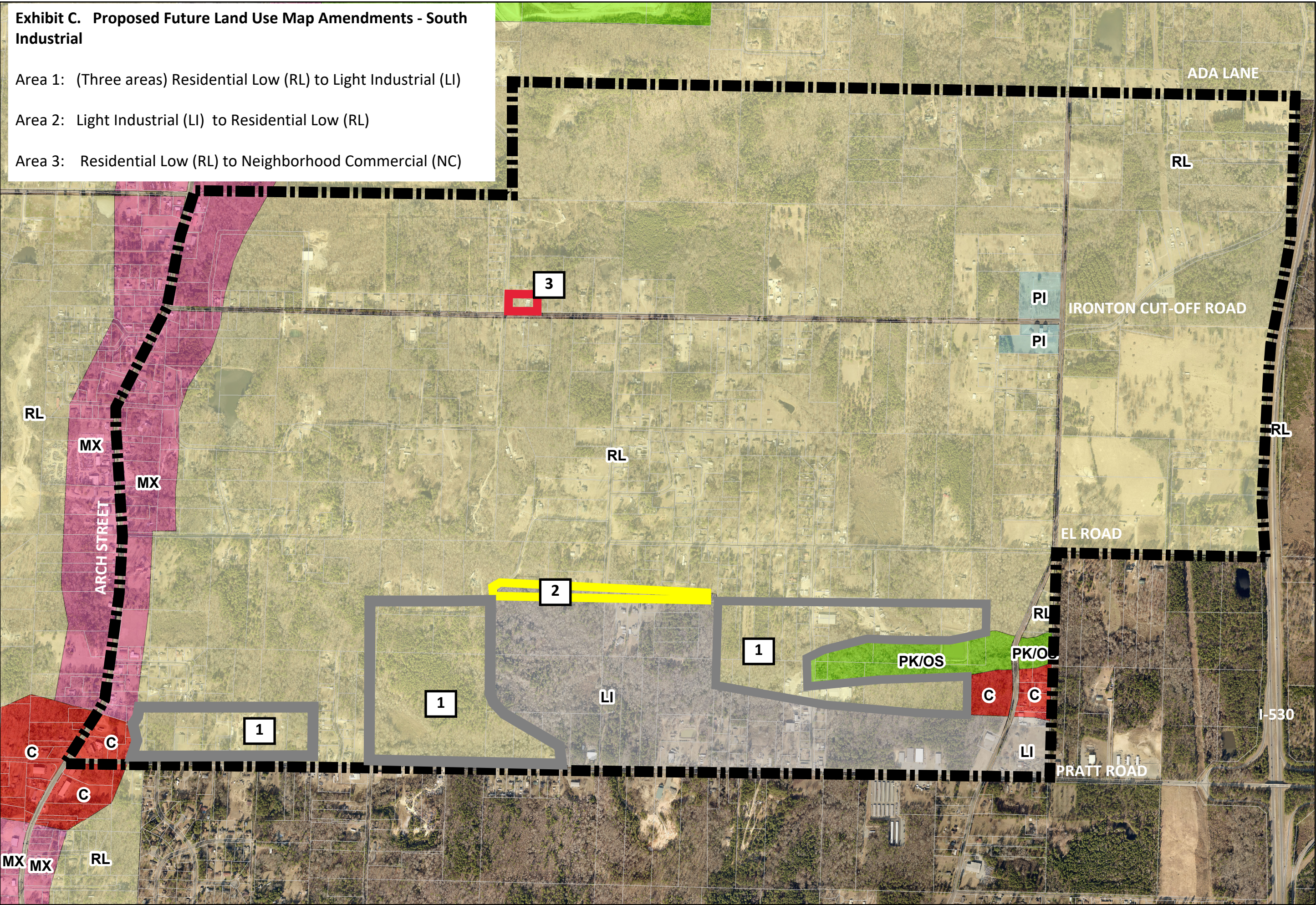


**Exhibit C. Proposed Future Land Use Map Amendments - South Industrial**

- Area 1: (Three areas) Residential Low (RL) to Light Industrial (LI)
- Area 2: Light Industrial (LI) to Residential Low (RL)
- Area 3: Residential Low (RL) to Neighborhood Commercial (NC)



723 West Markham Street  
Little Rock, Ar. 72201-1334

**City of Little Rock  
Arkansas**

1 inch = 1,017 feet

\*The data contained herein was compiled from various sources for the sole use and benefit of the Pulaski Area Geographic Information System (PAGIS) and the public agencies it serves. Any use of the data by anyone other than PAGIS is at the sole risk of the user, and by acceptance of this data, the user does hereby hold PAGIS harmless and without liability from any claims, costs, or damages of any nature against PAGIS, including cost of defense arising from improper use of the data, or use by another party. Acceptance or use of this data is done without any expressed or implied warranties.

**Index**  
Page 1 of 1

Date: 8/26/2021  
Created By: Brian Minaryad