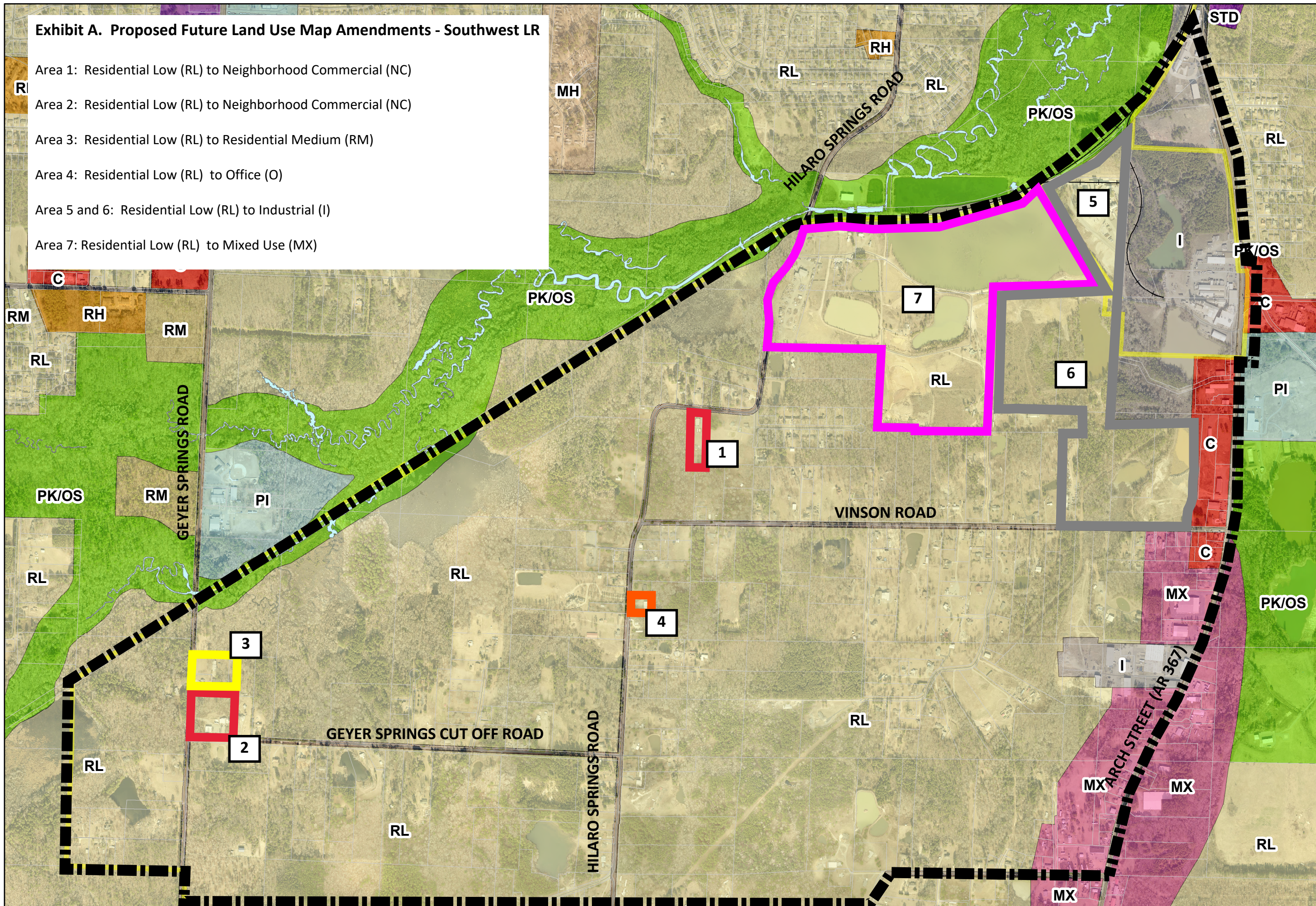
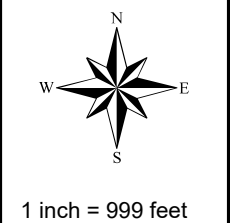


Exhibit A. Proposed Future Land Use Map Amendments - Southwest LR

- Area 1: Residential Low (RL) to Neighborhood Commercial (NC)
- Area 2: Residential Low (RL) to Neighborhood Commercial (NC)
- Area 3: Residential Low (RL) to Residential Medium (RM)
- Area 4: Residential Low (RL) to Office (O)
- Area 5 and 6: Residential Low (RL) to Industrial (I)
- Area 7: Residential Low (RL) to Mixed Use (MX)



**City of Little Rock
Arkansas**



The data contained herein was compiled from various sources for the sole use and benefit of the Public Area Geographic Information System (PAGIS) and the public agencies it serves. Any use of the data by anyone other than PAGIS is at the sole risk of the user, and by acceptance of this data, the user does hereby hold PAGIS harmless and without liability from any claims, costs, or damages of any nature against PAGIS, including cost of defense arising from improper use of the data, or use by another party. Acceptance or use of the data is done without any expressed or implied warranties.