



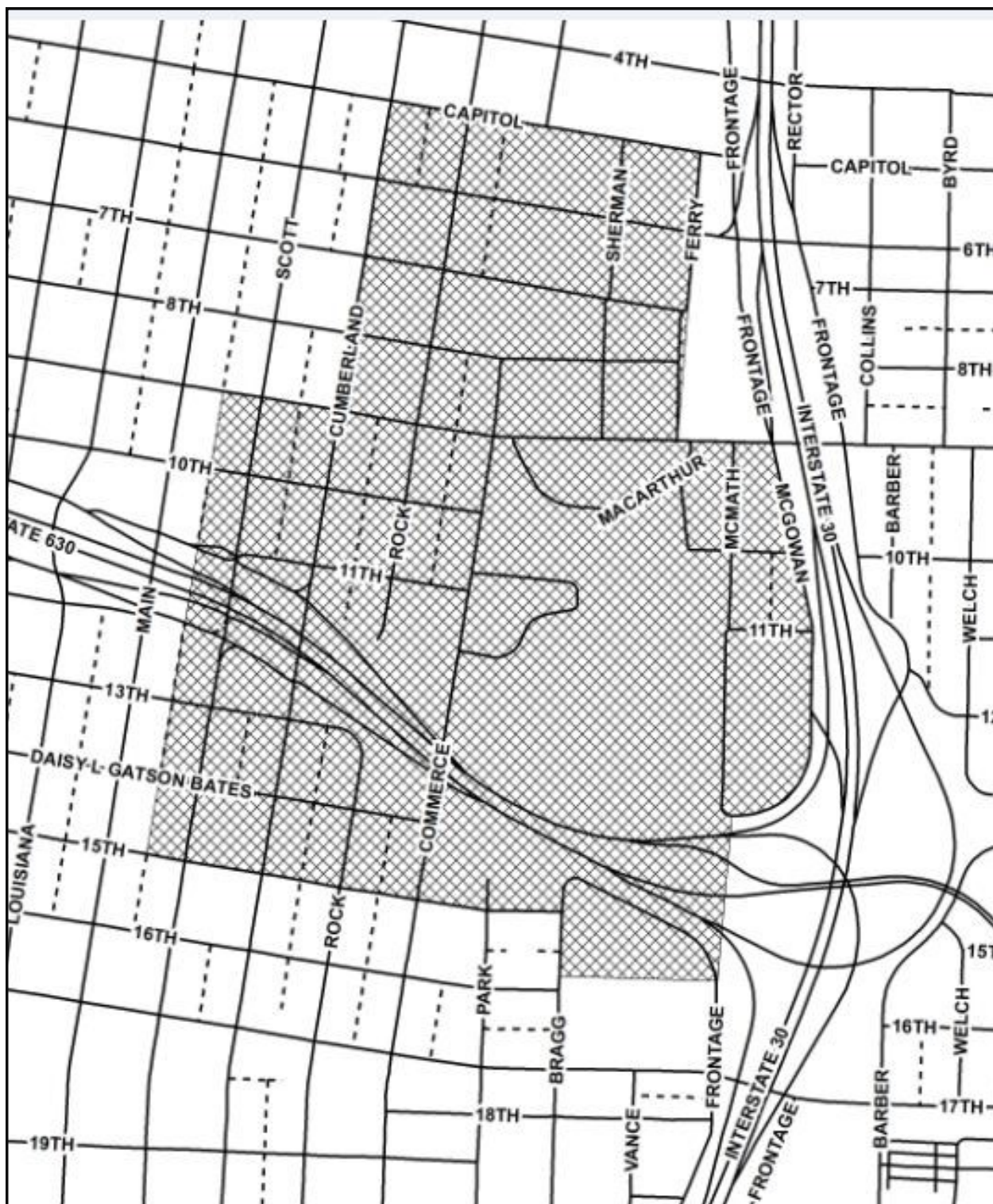
MacArthur Park Historic District

Guidelines for Rehabilitation and New Construction

April 2022



Department of Planning And Development



*Figure 1. Map of the MacArthur Park Local Ordinance Historic District
Little Rock, Arkansas*

Acknowledgements

Mayor Frank Scott Jr.

City Manager Bruce Moore

City of Little Rock Board of Directors

Virgil Miller Jr.

Ken Richardson

Kathy Webb

Capi Peck

Lance Heinz

Doris Wright

Brenda “BJ” Wyrick

Dr. Dean Kumpuris

Antwan Phillips

Joan Adcock

Planning and Development Department Staff

Jamie Collins, Director

Hannah Ratzlaff, Urban Designer

Little Rock Historic District Commission:

Ted Holder, Chair

Amber Jones, Vice Chair

Robert Hodge

Mark Hinson

Christina Aleman

Jonathan Nunn

Tom Fennell

Arkansas Historic Preservation Program

Iain Montgomery

Quapaw Quarter Association

Patricia Blick

Contemporary photographs by Wesley Walls, Brian Minyard and Charles Bloom

Historic Streetcar photographs from the collection of Tommy DeVore.

Historic Arsenal photographs from the collection of the Butler Center for Arkansas Studies, Central

Arkansas Library System

Additional Photos from the MacArthur Museum of Arkansas Military History and the Quapaw Quarter

Association

Sketches by Wesley Walls.

Published by the City of Little Rock, Department of Planning and Development, November 2016

This document is available on the web at :

<https://www.littlerock.gov/business/planning-and-development/boards-commissions/local-ordinance-district/>

FOR INFORMATION OR ASSISTANCE:

**Little Rock Historic District Commission
Department of Planning and Development
723 West Markham Street
Little Rock, Arkansas 72201
(501) 371-4790**

The activity which is the subject of these “Guidelines” has been financed in part with Federal Funds from the National Park Service, Department of the Interior, administered through the Arkansas Historic Preservation Program, an agency of the Department of Arkansas Heritage. However, the contents and opinions do not necessarily reflect the views or policies of the Department of the Interior, nor does the mention of trade names or commercial products constitute endorsement of or recommendation by the Department of the Interior or the Arkansas Historic Preservation Program.

TABLE OF CONTENTS

Acknowledgements	iii
List of Figures	ix
I. INTRODUCTION AND OVERVIEW OF HISTORIC PRESERVATION AND DESIGN GUIDELINES	1
II. HISTORIC PRESERVATION IN LITTLE ROCK	3
Introduction	3
A. History of Little Rock and the MacArthur Park Historic District	3
B. Historic Preservation Moving into the Twenty-first Century	7
III. DESIGN GUIDELINES FOR REHABILITATION	9
Introduction	9
A. Treatment of Original Materials—Residential and, Commercial and Mixed Use Structures	11
1. Preserve, Repair or Replace Original Materials	11
2. Retain the Visibility of Original Materials	11
a. Artificial Siding Policy	12
3. Maintain Original Materials	12
B. Individual Building Elements—Residential	13
1. Doors: screen, storm, and security doors	13
2. Windows: screen and storm; shutter; and security bars	14
3. Awnings	15
4. Porches: details and steps; stair railings	15
5. Walls: siding; wall shingles, stucco; and masonry	16
6. Roofs and Gutters	18
7. Chimneys	20
8. Foundations	20
9. Decks	20
10. Staircases and Fire Escapes	20
11. Handicap Access Ramps	20
12. Paint	21
C. Individual Building Elements - Commercial and Mixed Use Buildings	23
1. Storefronts on Commercial Structures	23
a. Doors	23
b. Display windows	23
c. Bulkheads	24
2. Upper Levels of Commercial Structures	24
a. Cornices	24
b. Architectural Details	24
c. Windows	24
3. Awnings on Commercial Structures	24
4. Light Fixtures on Commercial Structures	24
5. Signs on Commercial Structures	24
6. Garbage Collectors for Commercial Structures	25
7. Mechanical Systems for Commercial Structures	25
8. Streetscape	25
IV. DESIGN GUIDELINES FOR ADDITIONS	27
Introduction	27
A. Additions to Historic Structures	27
1. Additions	27

2.	Sustainable Technology	27
a.	Solar Water Heaters	28
b.	Solar Photovoltaic (PV) Arrays	29
c.	Wind Turbines	29
V.	DESIGN GUIDELINES FOR DETACHED NEW CONSTRUCTION OF PRIMARY AND SECONDARY BUILDINGS	31
A.	Residential Infill Guidelines	31
1.	Design Factors	32
a.	Siting	32
b.	Height	33
c.	Proportion	33
d.	Rhythm	34
e.	Scale	35
f.	Massing	35
g.	Entrance Area	36
h.	Wall area	36
i.	Roof Areas	37
j.	Facades	37
k.	Detailing	38
2.	Sustainable Technology	39
a.	Solar Water Heaters	39
b.	Solar Photovoltaic (PV) Arrays	40
c.	Wind Turbines	40
	Examples of Recently Built Residential Infill	41
B.	Commercial and Mixed –Use Infill Guidelines	43
1.	Design Factors	43
a.	Siting	44
b.	Height	45
c.	Proportion	45
d.	Rhythm	45
e.	Scale	46
f.	Massing	47
g.	Entrance Area	47
h.	Wall Areas	48
i.	Roof Areas	48
j.	Facade	49
k.	Detailing	49
2.	Sustainable Technology	50
a.	Solar Water Heaters	50
b.	Solar Photovoltaic (PV) Arrays	50
c.	Wind Turbines	51
	Examples of Recently Built Commercial and Mixed Use Infill	52
C.	A Map of Contributing and Non-Contributing Resources	53
	A Map of the Overlap Area of Capitol Zoning and MacArthur Park	54
VI.	GUIDELINES FOR RELOCATION AND DEMOLITION	55
1.	Relocation	55
2.	Demolition	55
VII.	DESIGN GUIDELINES FOR SITE DESIGN	57
	Introduction	57

A.	Landscape Features	57
1.	Sidewalks	58
2.	Planned Green Space	58
3.	Fencing and Retaining Walls	58
B.	Lighting	60
1.	Free-standing lights	60
2.	Security Lighting	60
C.	Parking Areas, Driveways, Curb Cuts, and Paving	60
1.	Residential Parking	61
2.	Commercial, Office, and Institutional Parking	61
3.	Curb Cuts	61
D.	Mechanical Systems and Service Areas	62
1.	Heating and Air Conditioning Units and Ceiling Fans	62
2.	Electrical and Gas Meters	62
3.	Garbage Collectors	62
4.	Satellite Dishes	62
5.	Solar Collectors	63
6.	Recreational Structures	63
E.	Signs	63
1.	Attached to Buildings	63
2.	Free-standing Signs	63
3.	Material for Signs	64
4.	Design of signs	64
5.	Lighting of signs	64
VIII.	ARCHITECTURAL STYLES AND FEATURES	65
A.	Federal 1760-1850	66
B.	Greek Revival 1820-1860	67
C.	Gothic Revival 1830-1880	68
D.	Italianate 1865-1885	69
E.	Second Empire 1860-1890	70
F.	Stick Style 1860-1890	71
G.	Queen Anne (Victorian) 1880-1910	72
H.	Romanesque Revival 1870-1900	74
I.	Colonial Revival 1890-1940	75
J.	Neoclassical or Classical Revival 1895-1950	76
K.	English Revival 1900-1930	77
L.	Spanish Revival 1900-1940	78
M.	Egyptian Revival 1835-1925	79
N.	American Foursquare 1880-1920	80
O.	Craftsman 1910-1940	81
P.	Prairie 1900-1930	83
Q.	“Modernist” Styles: Art Deco, Moderne, and International 1920-1950	84
R.	Rustic, C.C.C., and W.P.A. Styles 1900-1943	85
S.	Midcentury 1940-Present	86
T.	Vernacular 1800– Present	87
U.	19th Century Commercial	88
V.	Early 20th Century Commercial	89
IX.	LEGAL AUTHORITY AND PROCEDURE	91
A.	Legal Authority	91
B.	Procedure	92
1.	COA Requirements and Exemptions	92
2.	Initial Inquiry	93
3.	Steps to take if COA is not Required	93

4.	Steps to take if COA is Required	93
5.	Appeals	94
6.	Compliance	94
7.	Assistance	94
X.	APPENDICES	95
A.	Map of MacArthur Park Local Ordinance Historic District	95
B.	Certificate of Appropriateness Process Flow Chart	96
C.	Map of all National Register Districts	97
D.	List of National Register Historic Districts in Little Rock	98
E.	National Register of Historic Places and Local Ordinance Districts ..	103
1.	The National Register of Historic Places	103
2.	Results of listing in the National Register	103
3.	Comparison of National Register and Local Ordinance Historic Districts	104
F.	The Secretary of the Interior's Standards for Rehabilitation	106
G.	State of Arkansas Statute for Historic Preservation	107
H.	City of Little Rock Municipal Code for Historic Preservation	112
I.	Sample of Certificate of Appropriateness Application (Form with Instructions) and Notice of Public Hearing	122
J.	Sample of Certificate of Appropriateness	127
K.	Sample of Certificate of Compliance	128
L.	Guidelines Chart	129
M.	Maintenance Advice	131
N.	Definitions and Terms	134
1.	Procedural Definitions	134
2.	Technical Definitions	134
3.	Glossary of Architectural Terms	138
O.	Resources and Suggested Bibliography	145
1.	Resources, local, state, national	145
2.	Bibliography	156

LIST OF FIGURES

PROLOGUE

Fig. 1	Map of MacArthur Park Local Ordinance Historic District	ii
--------	---	----

I. INTRODUCTION AND OVERVIEW OF HISTORIC PRESERVATION AND DESIGN GUIDELINES.

Fig. 2	Column logo	1
Fig. 3	Historic postcard of Fire station #2	2

II. HISTORIC PRESERVATION IN LITTLE ROCK

Fig. 4	1871 Aerial map of Little Rock	3
Fig. 5	Illustration from Harpers Bazaar	4
Fig. 6	Barracks Plan	4
Fig. 7	Arsenal photo after conversion to living quarters	5
Fig. 8	Early mule drawn streetcar	6
Fig. 9	Women's City Club	6
Fig. 10	Pulaski Heights Line	7

III. DESIGN GUIDELINES FOR REHABILITATION—RESIDENTIAL

Fig. 11	Box bay with window	9
Fig. 12	19th Century Commercial Building	10
Fig. 13	Historic doors found in district	13
Fig. 14	Security and Storm Doors	13
Fig. 15	Various styles of windows	14
Fig. 16	Parts of a window	14
Fig. 17	Historic stained glass and window hoods	14
Fig. 18	Shutter size	14
Fig. 19	Awning shapes	15
Fig. 20	Appropriate porch styles	15
Fig. 21	Appropriate porch styles #2	15
Fig. 22	Wall siding details	16
Fig. 23	Wall shingle styles	16
Fig. 24	Detail of siding	17
Fig. 25	Column Styles	17
Fig. 26	Types of mortar joints	18
Fig. 27	Types of brick bonds	18
Fig. 28	Roof pitches	19
Fig. 29	Parts of a roof	19
Fig. 30	Parts of a roof #2	19
Fig. 31	Roof styles	19
Fig. 32	Roofing materials	20
Fig. 33	Examples of primary chimneys	20
Fig. 34	Foundation shown with brick piers	20
Fig. 35	Sketch of Fowler House	22
Fig. 36	Example of historic commercial structure	23
Fig. 37	Awning shapes #2	24
Fig. 38	Photo of commercial node on Ninth Street	25
Fig. 39	Photo of Mid-Century modern commercial building	25
Fig. 40	Sketch of Mills House	26

IV. DESIGN GUIDELINES FOR ALTERATIONS AND ADDITIONS

Fig. 41	Proper addition locations	28
Fig. 42	Setbacks for additions	28

Fig. 43	Sketch of Holtzman-Vinsonhaler-Vogler House	30
---------	---	----

V. DESIGN GUIDELINES FOR NEW CONSTRUCTION OF PRIMARY AND SECONDARY BUILDINGS

RESIDENTIAL

Fig. 44	Photo of single family detached infill.....	31
Fig. 45	Photo of multi-family housing infill	31
Fig. 46	Photo of multi-family housing infill #2.....	31
Fig. 47	Front and side yard setbacks	33
Fig. 48	Overall heights, building elements and proportion.....	33
Fig. 49	Foundation heights	34
Fig. 50	Orientation of long axis of house.....	34
Fig. 51	Compatible infill	34
Fig. 52	Not compatible infill	35
Fig. 53	Sharing basic design characteristics	35
Fig. 54	Not compatible infill #2	35
Fig. 55	Compatible orientation	36
Fig. 56	Main entrances	36
Fig. 57	Proper placement of sconces.....	36
Fig. 58	Photo of townhouses	37
Fig. 59	Photo of split face block.....	38
Fig. 60	Photo of porch with piers and lattice.....	39
Fig. 61	Photo of infill Queen Anne house.....	39
Fig. 62	Photo of 320 E 15th Street	41
Fig. 63	Photo of 1414 Rock Street	41
Fig. 64	Photo of 618 Rock Street.....	41
Fig. 65	Photo of 1421 Cumberland Street.....	41
Fig. 66	Photo of 1418 Rock Street	41
Fig. 67	Photo of 617 Cumberland Street	41
Fig. 68	Photo of 324 E 15th Street	41
Fig. 69	Photo of 516 Rock Street.....	41
Fig. 70	Photo of 1016 McGowan Street	41
Fig. 71	Photo of 515 E Capitol Street.....	41
Fig. 72	Sketch of Nash House	42

COMMERCIAL

Fig. 73	Photo of node of commercial on 9th Street	43
Fig. 74	Photo of commercial infill	43
Fig. 75	Front and side yard setbacks	44
Fig. 76	Photo of East 9th street commercial node for scale	45
Fig. 77	Part of a commercial storefront.....	46
Fig. 78	Photo of compatible new infill	47
Fig. 79	Photo of use of pilasters	47
Fig. 80	Photo of lack of entrance on street	48
Fig. 81	Photo of use of clapboard siding	48
Fig. 82	Photo of 805 Sherman Street	52
Fig. 83	Photo of 301 E Capitol Street.....	52
Fig. 84	Photo of 1200 Scott Street	52
Fig. 85	Map of contributing and non-contributing structures	53
Fig. 86	Overlap of CZDC and LR HDC.....	54

VI. GUIDELINES FOR RELOCATION AND DEMOLITION

none

VII. DESIGN GUIDELINES FOR SITE DESIGN

Fig. 87	Cast iron fencing	57
Fig. 88	Historic retaining walls	57
Fig. 89	Concrete sidewalk with brick edging	58
Fig. 90	Brick sidewalk in herringbone pattern	58
Fig. 91	Sidewalk with cut stone pavers	58
Fig. 92	Fences in side yards that block other front yards	58
Fig. 93	Ornate ornamental iron fence	59
Fig. 94	Simple metal ornaments iron fence	59
Fig. 95	Wood fence with flat wood pickets	59
Fig. 96	Wood fence with square wood pickets	59
Fig. 97	Section of retaining wall	59
Fig. 98	Ribbon driveways	61
Fig. 99	Driveways locations	61
Fig. 100	Parking lot screening	61
Fig. 101	Parking lot siting	62
Fig. 102	Parking lots in appropriate locations	62
Fig. 103	Parking lots in inappropriate locations	62
Fig. 104	Satellite dishes	62
Fig. 105	Signs that are appropriate	63

VIII. ARCHITECTURAL STYLES AND FEATURES

Fig. 106	Photo of Arsenal Building	66
Fig. 107	Photo of Arsenal Building #2	66
Fig. 108	Photo of Fowler House	66
Fig. 109	Photo of Curran Hall	67
Fig. 110	Photo of Pike Fletcher Terry House	67
Fig. 111	Photo of Trapnall Hall	67
Fig. 112	Photo of First Lutheran Church	68
Fig. 113	Photo of St. Edwards Church	68
Fig. 114	Photo of Mills House	69
Fig. 115	Photo of Samuels-Narkinski House	69
Fig. 116	Sketch of Lincoln House	69
Fig. 117	Photo of Villa Marre	70
Fig. 118	Photo of Butler House	71
Fig. 119	Photo of Chisum House	71
Fig. 120	Photo of Bein House	72
Fig. 121	Photo of Holtzman-Vinsonhaler House	72
Fig. 122	Photo of Hanger House	72
Fig. 123	Photo of Ferling House Apartments	73
Fig. 124	Photo of Holtzman-Vinsonhaler-Vogler House	73
Fig. 125	Photo of Gemmil House	73
Fig. 126	Historic photo of Kramer School	74
Fig. 127	Photo of Kramer School	74
Fig. 128	Photo of Nash House (601 Rock)	75
Fig. 129	Photo of Reigler Cottage	75
Fig. 130	Photo of Hanggi House	75
Fig. 131	Photo of Holtzman House #2	76
Fig. 132	Photo of East Side School	76
Fig. 133	Photo of 1301 Cumberland	77
Fig. 134	Photo of 3420 Hill Road	77
Fig. 135	Photo of 324 W Daisy Bates	77

Fig. 136	Photo of 4220 Woodlawn	77
Fig. 137	Photo of YMCA Building	78
Fig. 138	Photo of YMCA Building detail	78
Fig. 139	Photo of Albert Pike Hotel	78
Fig. 140	Photo of 3233 Ozark Street	78
Fig. 141	Photo of Fordyce House	79
Fig. 142	Photo of Fordyce House #2	79
Fig. 143	Photo of Fletcher House	80
Fig. 144	Photo of Johnson House #3	80
Fig. 145	Photo of Johnson House #1	80
Fig. 147	Photo of Rainwater Apartments	81
Fig. 147	Photo of 1107 Cumberland Street	81
Fig. 148	Photo of 1412-1414 Scott Street	81
Fig. 149	Photo of Beverly Apartments	82
Fig. 150	Photo of Melmore Apartments	82
Fig. 151	Photo of Baer House	82
Fig. 152	Photo of Old Fire Station #2	82
Fig. 153	Photo of 1701 S Broadway Street	83
Fig. 154	Photo of 2200 Broadway	83
Fig. 155	Photo of 418-422 E 15th Street	84
Fig. 156	Photo of Paragon Building	84
Fig. 157	Photo of Fine Arts Museum	85
Fig. 158	Photo of U of A Law School	85
Fig. 159	Photo of 420 E 11th	86
Fig. 160	Photo of Phillips Apartments	86
Fig. 161	Photo of Oden Optical Company	86
Fig. 162	Photo of ST. Edwards School	86
Fig. 163	Photo of 1st Kadel Cottage	87
Fig. 164	Photo of 301 President Clinton Ave.	88
Fig. 165	Photo of 1200 S Main Street	88
Fig. 166	Photo of Kindervarter Building	89
Fig. 167	Photo of Bakers Liquor Building	89
Fig. 168	Sketch of Rainwater Apartments	90

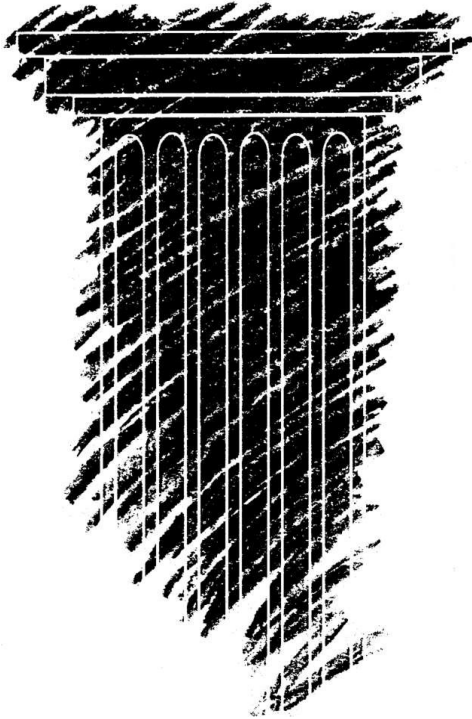
IX. LEGAL AUTHORITY AND PROCEDURES

Fig. 169	Procedure	99
Fig. 170	Certificate of Compliance	99
Fig. 171	Certificate of Appropriateness	98

IX. APPENDICES

Fig. 172	Map of MacArthur Park Local Ordinance District #2	97
Fig. 173	Map of National Register Districts as of November 2013	98
Fig. 174	Chart of comparison of national and local districts	106
Fig. 175	Application for a Certificate of Appropriateness	123
Fig. 176	Instructions for COA application	124
Fig. 177	COA Instructions continued	125
Fig. 178	COA Notice of Public Hearing	126
Fig. 179	COA Authorization of Representation	127
Fig. 180	Sample COA	128
Fig. 181	Sample Certificate of Compliance	129
Fig. 182	Guideline Chart	130

Fig. 183 Guideline Chart continued	131
--	-----



I. INTRODUCTION AND OVERVIEW OF HISTORIC PRESERVATION AND DESIGN GUIDELINES

Preserving historic resources makes good economic sense. Vital and attractive inner-city neighborhoods define the unique character and heritage of a city and promote the overall quality of life by reusing established infrastructure. Throughout the country, historic neighborhoods are becoming important magnets for heritage tourism.

Little Rock's MacArthur Park Historic District is a local ordinance historic district that surrounds and includes a national historic landmark – the Old U.S. Arsenal constructed in 1840 as part of a United States military post. Before becoming a local ordinance historic district, the MacArthur Park Historic District was listed on the National Register of Historic Places. As of 2022, there are twenty-three National Register Historic Districts in Little Rock. (See Appendix C.) A few blocks of the MacArthur Park Historic District are also located in the Governor's Mansion Area of the Capitol Zoning Districts and are regulated by the Capitol Zoning District Commission with respect to zoning restrictions and the issuance of certain permits. (See Appendix D for comparison of National Register Historic Districts, Local Ordinance Historic Districts, and National Landmarks.)

The purpose of this manual is to provide information about the requirements that must be met prior to undertaking construction, demolition, and certain other changes to property located within the MacArthur Park Historic District. (See map of the MacArthur Park Historic District on Appendix A.) This manual is designed to guide property owners with respect to whether Historic District Commission approval is required for a particular project, the procedural steps that must be followed to submit a proposal for review by the Commission, and the design standards that will be considered by the Commission in making its determination of appropriateness.

Historic district guidelines are based on design principles and preservation standards used by historic district commissions nationwide and on federal standards for rehabilitation of historic buildings. In addition to explaining the philosophy and value of historic preservation, these guidelines provide illustrations that note the architectural styles and landscape features that are the character-defining elements of the MacArthur Park Historic District. These are, therefore, the elements that should be retained and protected by the property owner. Solutions for rehabilitation and recommendations regarding new construction are provided by these guidelines to help preserve the historic character of the District and to allow change that is appropriate to the District's historic integrity.

The U.S. Secretary of the Interior's Standards for historic preservation projects were initially developed in 1977 to assist the long-term preservation of the historic significance of properties listed on the National Register of Historic Places. These federal standards are used by the Secretary of the Interior to determine the appropriateness of a proposed rehabilitation project when the owner is seeking financial assistance from the Historic Preservation Fund grant-in-aid program. To qualify as a certified rehabilitation project, the work must be determined by the Secretary of the Interior to be consistent with the historic character of the structure(s) and, where applicable, with the district in which it is located. Revised in 1990, these federal standards have been adopted by many local ordinance historic districts

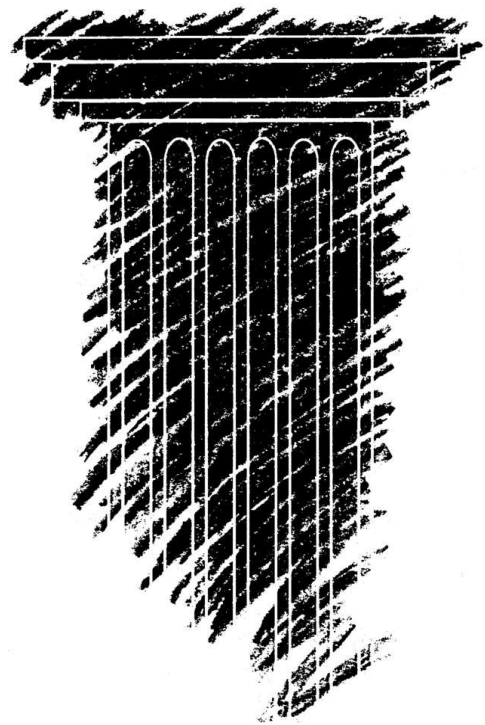


Figure 2. Column logo of Little Rock Historic District Commission.

and planning commissions throughout the United States. (See Appendix E, Secretary of the Interior's Standards for Rehabilitation.)

Applicants should familiarize themselves with the State Statute located at Appendix F and the City ordinance located at Appendix G.

Communities and neighborhoods develop design review guidelines primarily for economic and other reasons. By adhering to accepted design and rehabilitation standards, an historic neighborhood can maintain its unique character and enhance its individual property values. Neighborhoods across the country, which have adopted design review guidelines have generally experienced stabilization or increases in property and resale values. Therefore, by protecting the unique characteristics that define a neighborhood, adherence to design review guidelines also protects and encourages investment in historic areas.

With the principal goal of protecting the unique and valued qualities, or character-defining elements, of an historic district, emphasis must be placed on preservation of urban design, architectural character, and historic materials used in buildings and landscapes. Important words to remember are REPAIR, RETAIN, MAINTAIN, and PROTECT. It is preferable to:

- **REPAIR** original materials rather than to replace them;
- **RETAIN** original landscape features such as stone retaining walls;
- **MAINTAIN** original wood siding due to its integral part in displaying historic character; and
- **PROTECT** the original setting of the building to preserve its integrity.

The design guidelines included in this manual apply to the exteriors of residential and commercial structures within the MacArthur Park Historic District, including buildings, signs, walls, fences and other landscape features. Although interior space is not insignificant, only the part of the built environment that is easily visible to the public is subject to these guidelines. The primary facades of a building are the areas with the greatest amount of detail and decoration visible from the public right-of-way. These areas largely define the architectural character of a property and are emphasized by the Little Rock Historic District Commission for purposes of project review and determinations of appropriateness.

Little Rock Historic District Commission members use these guidelines as an objective standard upon which to make their decisions concerning the appropriateness of a project in relation to the significant architectural and historic character of the District. Issues concerning appropriate use of the property are not addressed by the Historic District Commission but are referred to the Little Rock Planning Commission staff for proper guidance.



Figure 3. Historic postcard of Fire Station #2 at 1201 Commerce Street.

**Historic Preservation is inherently “green”—
environmentally friendly.**

II. HISTORIC PRESERVATION IN LITTLE ROCK

Across the nation, thousands of communities promote historic preservation because doing so contributes to neighborhood livability and quality of life, minimizes negative impacts on the environment, and yields economic rewards. Little Rock is a part of this movement.

Little Rock is an important southern riverfront city with a unique history. Because it is rich in historic resources and offers an outstanding quality of life, Little Rock continues to attract development that challenges the community to seek creative ways of protecting its character. Preserving historic resources is a part of an overall strategy of maintaining community identity and livability. As Little Rock continues to redevelop, one major goal is to maintain its ties to the past through the preservation of its architectural heritage. Heritage tourism should be an important part of the community's economic development strategy. The underlying objectives of heritage tourism are consistent with Little Rock's development goals: preserving and enjoying the historic resources of a southern riverfront city in a natural, cohesive, and consistent way. Preservation of the built environment provides a fundamental link to the past because historic architecture brings the past to life. Many of Little Rock's buildings and tree-lined streets tell the story of its historical development. Preserving these resources creates a sense of place for residents and provides visitors a view of the city's past.

Little Rock has twenty-one National Register Historic Districts (see Appendix B). These designations help define the extent of our historic resources and the possibilities for preservation. Three areas are protected by local ordinance: the MacArthur Park Historic District, regulated by the Little Rock Historic District Commission; and the areas around the Arkansas Capitol and the Governor's Mansion, regulated by the Capitol Zoning District Commission. (For descriptions of National Register Historic Districts, see Appendix C.)

A. HISTORY OF LITTLE ROCK AND THE MACARTHUR PARK HISTORIC DISTRICT

The Arkansas River was a major factor determining the founding and development of Little Rock. By the early seventeenth century, Quapaw Indians from the Ohio River Valley had migrated to the "point of rocks," finding high ground, fertile soil, abundant water, good hunting and fishing, and easily accessible stone and timber. White trappers and settlers found these same qualities desirable. By treaty in 1818, the Quapaws ceded claims to land in Territorial Arkansas, west of a line from the 'little rock' to the Saline River, making the land available for settlement. The remaining Quapaw area, east of the Line, was ceded to the United States in 1824. (A monument to the Quapaw Line may be found at the southeast corner of Ninth and Commerce.) By 1819, fourteen people were permanent residents. They probably lived in log cabins, the larger ones having two rooms separated by a "dog trot" open porch. Bricks became available as building materials in 1826.

In 1821, the town was designated the Arkansas territorial capital and was incorporated ten years later. The



Figure 4. An 1871 aerial map of Little Rock. Note Arsenal Building (15) on map.

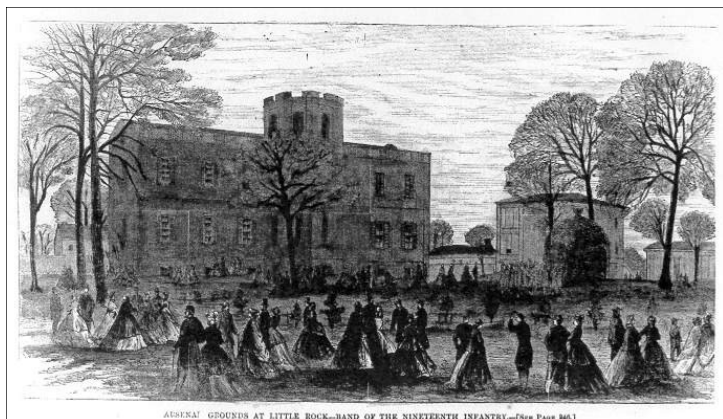


Figure 5. An illustration from *Harper's Bazaar*

MacArthur Park Historic District. In 1836, the federal government bought 36 acres of land for a United States military post, showing a commitment to protect the frontier community. The first building of the U. S. Arsenal at Little Rock (503 E. Ninth), built of red brick in the Federal style, was ready to store munitions by 1840, with other structures following. (This sole remaining building of the Arsenal is now called either the Arsenal Building or the Tower Building.) The buildings served the Confederacy for several years during the Civil War.

Several Greek Revival homes (“mansions” at the time) were constructed in the area in the 1840’s and still remain. The Absalom Fowler House (503 E. Sixth) was built by a successful lawyer and land speculator. The Pike-Fletcher-Terry House (411 E. Seventh), constructed in 1840, has housed two of Arkansas’s most distinguished persons: Albert Pike, lawyer, poet and Masonic philosopher; and later, John Gould Fletcher, the only Arkansan who has won a Pulitzer Prize for literature. This house also has links with African-American history. Slaves probably constructed it. In the late 1950’s, Adolphine Fletcher Terry and the Women’s Emergency Committee met in the house to develop ways to counter the closure of Little Rock’s public schools following integration crisis at Central High School. Curran Hall (615 E. Capitol Avenue) and Trapnall Hall (423 E. Capitol Avenue) were both built about 1843. Four smaller Greek Revival homes were built before the war. Each of these was an urban farmstead, with the house accompanied by a variety of outbuildings and landscape features, both ornamental and utilitarian.

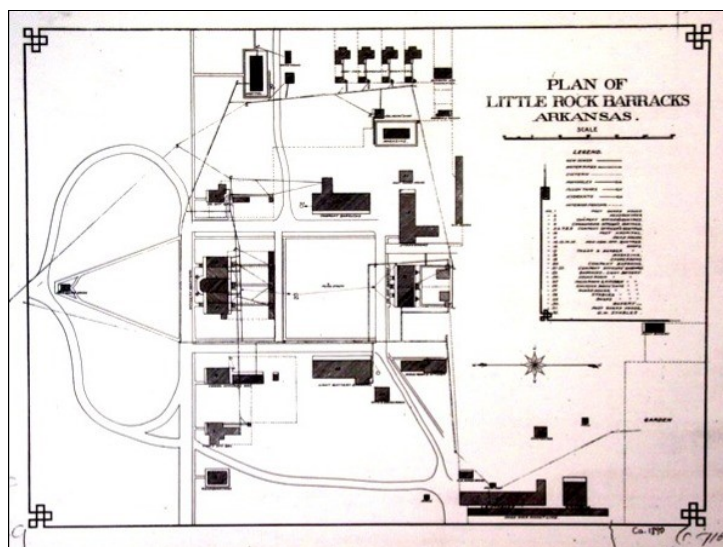


Figure 6. Barracks Plan of Little Rock Arsenal, ca. 1890

frontier village of Little Rock became the capital of the State of Arkansas in 1836. Buildings located on the grounds of the Historic Arkansas Museum (200 E. Third) date from the territorial period. Arkansas’s first capitol building, now called the Old State House, was being constructed when Arkansas achieved statehood.

Early settlement in Little Rock took place along the Arkansas River, giving the town an east-west orientation. By 1840, Little Rock had grown to 1,531 residents and was expanding south from the river into the area included within the boundaries of the current

The MacArthur Park Historic District has one of the largest concentrations of pre-Civil War buildings remaining in the state. Also created in 1843 was Mount Holly Cemetery (1200 Broadway), which has an impressive variety of monuments at the gravesites of many notable Arkansans.

The growth of Little Rock before 1860 was hampered by three economic drawbacks: lack of an efficient transportation network; a primitive city financial system; and the surrounding wilderness, which did little to foster retail business and export trade. Although people traveled through Little Rock on the river, the Southwest Trail, and the east-west military road, fewer than 4,000 people actually lived

in the capital city by 1860. The antebellum houses of MacArthur Park reflect these economic conditions; almost all were homes of lawyers and people who could thrive on the political life of the town.

Little Rock grew dramatically in the wake of the Civil War. Black freedmen and many Union soldiers decided to make Little Rock home. German immigrants constituted a sizeable portion of the new residents, building many homes and founding two churches, First Lutheran (314 E. Eighth) and Saint Edward's Catholic (815 Sherman). Easy credit, northern capital, and the arrival of the Memphis and Little Rock Railroad in 1869 created a building boom. The 1873 Baring Cross Bridge helped transform the city from a small river port into an urban land-based distribution center.

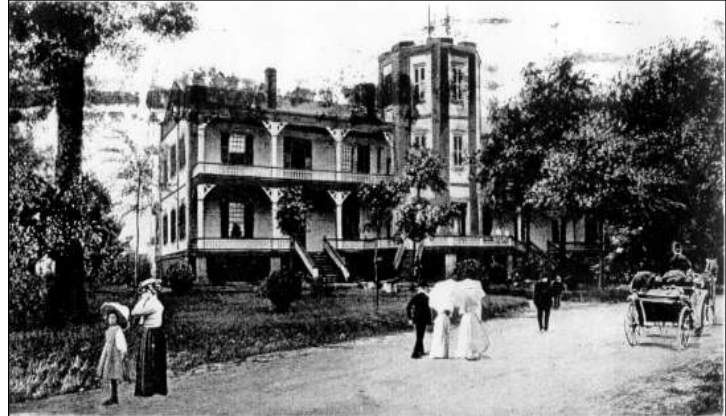


Figure 7. Arsenal after conversion to living quarters, c.1900

The grand Italianate homes of MacArthur Park were the first of many brick houses built from 1870-1890. The brick Lincoln House (310 E. Seventh), built in 1877 for wholesale druggist Charles Lincoln, perfectly retains its decorative exterior ornament, making it a local showplace. The Garland-Mitchell House (1404 Scott), built in 1873, an excellent wood example of Italianate style, was the home of two governors of Arkansas, Augustus Garland and Charles Brough. A simpler cottage, the Cook House (605 East Sixth), was inhabited by the town's first full-time undertaker, reflecting the growing needs of Little Rock as it evolved into a city. At least nineteen fine examples of Italianate architecture remain in the districts, recalling the post-war boom.

An economic upsurge brought even greater growth and prosperity in the 1880's and 1890's. The city became the hub of a rail network connecting the entire state. The Arkansas frontier had been pushed back by the rapid expansion of agricultural, timber, and mining industries. Rural areas began to see Little Rock as their wholesale and distribution center. While never really suited as a major cotton center, Little Rock did become the nation's fourth largest inland cotton market between 1880 and 1900. The retail and wholesale business formed the backbone of the city's economy. The state's legal, political, and financial focus in Little Rock was equally important. Modern developments included a municipal water company, telephone and electrical service, and streetcars (first mule-drawn, later electrical.)

By the early 1880's, the entire area of the MacArthur Park Historic District was covered with a formal grid of streets, along which were clustered closely-packed Victorian homes. One of the remaining houses dating from this time is the unique Villa Marre' (1321 Scott), built in 1881 in the Second Empire style with a mansard roof by Angelo Marre', an active member of one of Little Rock's most promising professions—saloon keeping. The Butler House (609 Rock) is a small Victorian cottage built by printer Robert Butler in 1888. A year later, a magnificent Queen Anne mansion with a Japanese "moongate" porch was built by cotton planter and gin owner Frederick Hanger (1010 Scott). Small rental houses with modest Victorian detail, accommodating different classes, were interspersed throughout the neighborhood.

The MacArthur Park area experienced its maximum period of development as a residential district around 1900. As grocery stores and other retail outlets flourished, the need for home gardens, livestock, and attendant outbuildings diminished. Urban farmsteads were subdivided to accommodate other homes. Public schools and churches were built to provide services. Kramer Elementary School (715 Sherman), built in 1895 with elements of the Romanesque Revival and Queen Anne styles, was followed in 1900 by Little Rock High School (1401 Scott), which became East Side Junior High School, built

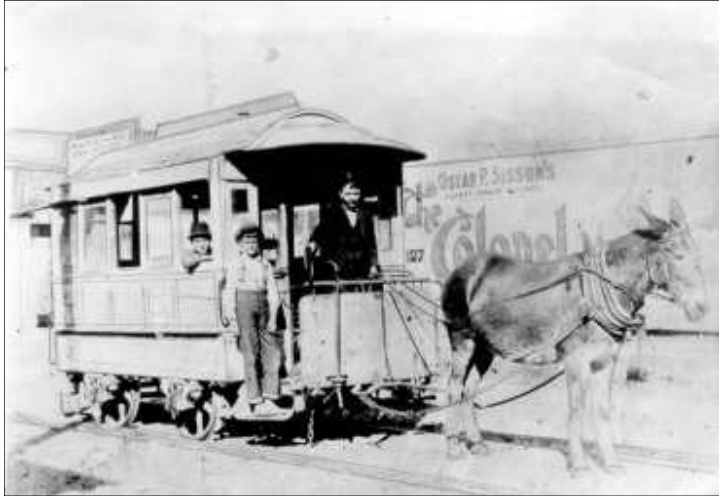


Figure 8. An early mule-drawn streetcar

Arkansas and prospered after the war. (In 1904, the north-shore community asserted itself and became North Little Rock.) As the former Arsenal land became the town's first public City Park, all of the military buildings were removed except for the Arsenal (or Tower) Building. Used as the city's first public library and a school, it also became home to the Æsthetic Club, one of the oldest women's organizations west of the Mississippi River; the Club helped save the building from demolition. In 1942 the Arsenal Building housed the Museum of Natural History and Antiquities, later named the Arkansas Museum of Science and History. Because General Douglas MacArthur was born at the Arsenal, the park's name was changed in 1942 to honor him: MacArthur Park. Designated a National Historic Landmark, the Arsenal Building now houses the MacArthur Museum of Arkansas Military History.

Elsewhere in the Park, #2 Fire Station (1201 Commerce) was built in 1917 to protect the expanding urban area, introducing the Craftsman style to the area. The Foster Bandshell* housed musical entertainments. Across McAlmont Street east of MacArthur Park, the University of Arkansas, aided by Public Works Administration funds, constructed the College of Medicine in 1935 (now 1201 McMath). The design of the building, buff brick with limestone trim, reflected the popular "WPA Moderne" style. Later it became home to the U of A Graduate Institute of Technology; in 1992, it was extensively remodeled for the University of Arkansas at Little Rock School of Law. Just southwest of the Arsenal Building, in 1937, the Works Progress Administration funds constructed the Museum of Fine Arts (501 E. Ninth); the impressive Art Moderne façade is now an interior wall of the expanded Arkansas Arts Center. Extensive improvements have been made to the landscape to make it more desirable as a city



Figure 9. Women's City Club, 4th and Scott, showing variety of horse drawn transportation, ca. 1912.

with classical details. Churches include St. Edward's Catholic Church at 815 Sherman (designed by noted Arkansas architect Charles Thompson in 1905), First Presbyterian Church (800 Scott), built in 1922, and First Lutheran Church (314 E. 8th), built in 1888.

Little Rock annexed the land north of the Arkansas River, which had become an important railroad hub known as Argenta, as the town's eighth ward. In 1890, the United States government traded the Little Rock Arsenal for land on top of Big Rock, on the north side of the river, naming it Fort Logan Roots for a Northerner who stayed in

park, including the Knapp Memorial cenotaph and drinking fountain. Also historic artifacts have been included, such as columns from a demolished building used for a gazebo. MacArthur Park serves as the nucleus of the historic district bearing its name.

While the function of the Arsenal changed from securing the frontier to providing the city with arts, science, and leisure activities, Little Rock was rapidly expanding to the south and west. The city began to emerge as a modern municipality after 1900, with the development of paved streets and railroad viaducts, water and sewer

lines, and adequate fire protection, street lights, and garbage collection. A new state capitol building was begun in 1900, finally completed in 1914. Neighborhood developments to the south and west of the original town have been designated as National Register Historic Districts. The Governor's Mansion Historic District includes impressive houses and churches built between the 1870's and the 1920's in the "south end." The westward development of Little Rock after 1900 may be seen in Hillcrest, Central High, Capitol View/Stift Station, and Railroad Call Districts. Small apartment buildings and homes were built in the 1920's and 1930's.

Architectural styles include Folk Victorian, American Foursquare, Colonial Revival, Craftsman and bungalows, Spanish and Tudor Revival, Art Deco and Art Moderne.



Figure 10. Pulaski Heights Line, 1947

Throughout the evolution of architectural styles and divisions of large lots, the streetscape in the MacArthur Park area remained intact. The paved streets had curbs, planting strips, and sidewalks, with trees arching overhead. Yards were defined by iron fences and walls of stone or brick. Set back from the street, houses had front porches, side and back yards, with garages in the rear accessed by alleys. Landscaping included heirloom roses, crepe myrtles, camellias, a variety of evergreens, and hardy perennials. Today, the human scale invites personal involvement. Despite the intrusions of several high-rise apartment buildings and of Interstate 630, the aesthetic ideals and social patterns of Nineteenth Century Little Rock come vividly to life in the MacArthur Park Historic District.

B. HISTORIC PRESERVATION MOVING INTO THE TWENTY-FIRST CENTURY

As the area encompassed by the MacArthur Park Historic District approached the end of the Twentieth Century, many changes took place. Families realized that the large Victorian houses had spacious rooms, unique details, and were quite affordable. Some houses, which had been divided into apartments, were returned to single-family residences and restored to their earlier elegance. Others were converted into offices but retain their residential appearance from the street. Kramer and East Side Schools were converted into loft apartments. Neighborhood stores and even a fire station became residences.

The McClellan-Kerr Arkansas River Navigation System, opened in 1971, has not only stabilized the river and the surrounding area for economic development, but it has also encouraged scenic development of parks and recreational areas along the banks.

In 1961 the "Technical Advisory Committee on Significant Structures" was formed to assist the city in developing urban renewal projects. The committee identified the structures to be preserved instead of demolished. The Quapaw Quarter is a name devised in the early 1960's by the committee in an attempt to identify the oldest portion of Little Rock and to acknowledge the earliest settlers of the area. The Quapaw Quarter Association was created in 1968 to advocate the merits of the downtown historic areas and to aid people interested in restoring historic properties. The popular Q.Q.A. Spring Tour acquainted many Arkansans, as well as other visitors, with the beauty and livability of the historic areas. Little Rock nominated districts to the National Register of Historic Places (MacArthur Park, Governor's Mansion, Marshall Square, Hillcrest, Boyle Park, South Main Street Apartments, Central High, Railroad Call, East Markham Street, Philander Smith, South Scott Street, Capitol View, Tuf-Nut, Stift Station,

Hanger Hill, South Main Commercial, South Main Residential, West Seventh Street, Main Street, Capitol-main, Dunbar) and, in 1981, the City established a Historic District Commission, with authority over Local Ordinance Historic Districts. When pressures of urban life in the capital city necessitated changes (I-630, the Main Post Office, the River Cities Travel Center), historic preservationists helped to soften the intrusions. In 2021, the additional historic districts of Broadmoor and Downs were nominated to the National Register of Historic Places, giving Little Rock twenty-three (23) historic districts across the city.

The history embodied in MacArthur Park Historic District's structures, the rich variety and distinctiveness of its architecture, the lush green open spaces, the tree-lined streets, the human scale and the visual continuity combine to make the historic district truly remarkable and worthy of preservation--a good place in which to live and work and a place in which history can be experienced firsthand.

Historic preservation is the management of change, by engaging the past, in conversation with the present, over a concern for the future.

Pittsburgh History and Landmarks Foundation