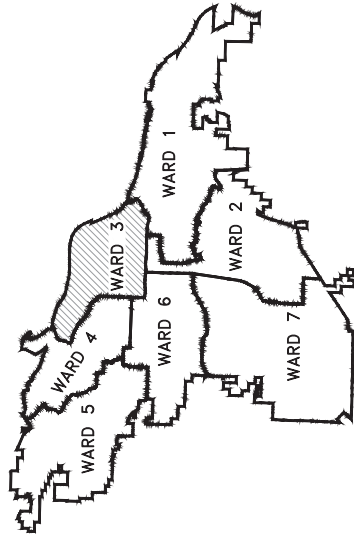
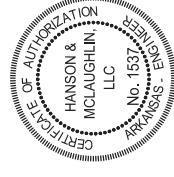


MIDLAND DRAINAGE 60% SUBMITTAL



PROJECT LOCATION - WARD 3

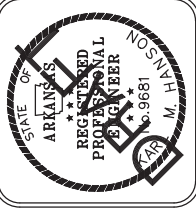
- | | |
|-----------|-----------------------|
| SHEET NO. | TITLE |
| C1 | COVER SHEET |
| C2 | LEGEND AND QUANTITIES |
| C3 | EXISTING CONDITIONS |
| C4 | PLAN AND PROFILE |
| C5 | EROSION CONTROL |



REVISIONS	DATE

CITY OF LITTLE ROCK, ARKANSAS
MIDLAND DRAINAGE
COVER SHEET

DEPARTMENT OF PUBLIC WORKS
CIVIL ENGINEERING
701 W. MARKHAM
LITTLE ROCK, ARKANSAS 72201



DRAWN BY	KMH
DESIGNED	KMH
CHECKED	FJS
DATE	7-7-2022
SCALE	N.T.S.
PROJECT NO.	WARD 3
SHEET NO.	C1

DEPARTMENT OF PUBLIC WORKS
CIVIL ENGINEERING
701 WEST MARKHAM STREET
LITTLE ROCK, ARKANSAS 72201

HANSON & MCLAUGHLIN, LLC
320 EXECUTIVE COURT, SUITE 202
LITTLE ROCK, ARKANSAS 72205
(501) 716-2850



REVISIONS	DATE

CITY OF LITTLE ROCK, ARKANSAS
MIDLAND DRAINAGE
LEGEND AND QUANTITIES

DEPARTMENT OF PUBLIC WORKS
CIVIL ENGINEERING
701 W. MARKHAM
LITTLE ROCK, ARKANSAS 72201



DRAWN BY	KMH
DESIGNED	KMH
CHECKED	FJS
DATE	7-7-2022
SCALE	N.T.S.
PROJECT NO.	WARD 3
SHEET NO.	C2

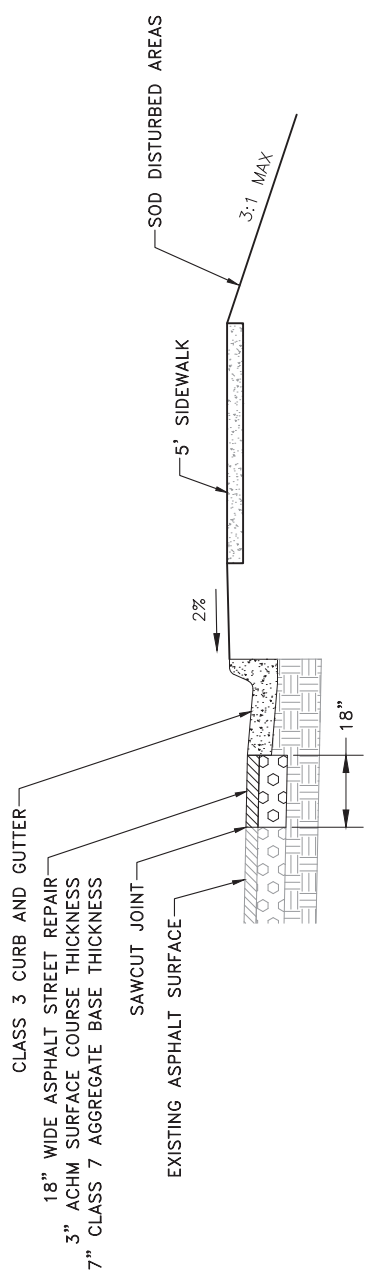
EXISTING

IRON ROD	O IR
PK NAIL	OPK
R.R. SPIKE	ORR(Sp)
CONC. MONUMENT	OCM
WATER VALVE	X WV
WATER METER	WM
FIRE HYDRANT	YFH
GAS METER	ZGM
GAS VALVE	GV
CLEAN-OUT	CO
GUARD POST (BOLLARD)	GP
SIGN POST	SP
BENCHMARK	B
STORM SEWER MANHOLE	S
SANITARY SEWER MANHOLE	SM
TELEPHONE MANHOLE	T
ELECTRIC MANHOLE	E
TELEPHONE BOX	TB
ELECTRIC BOX	EB
CABLE BOX	CB
UTILITY POLE	UP
GUY WIRE	GW
LIGHT POLE	LP
POST OR POLE (TYPE AS NOTED)	P
MAILBOX	M
DECIDUOUS TREE	DT
EVERGREEN/CONIFEROUS TREE	ET
BUSH	B
PROPERTY LINE	PL
SETBACK LINE	SL
EASEMENT LINE	EL
CURB	C
FENCE	F
OVERHEAD UTILITY	OU
UNDERGROUND TELEPHONE	UT
UNDERGROUND ELECTRIC	UE
WATER LINE	WL
SEWER LINE	SL
GAS LINE	GL
STORM SEWER/CULVERT	SS
CONTOUR LINE	CL

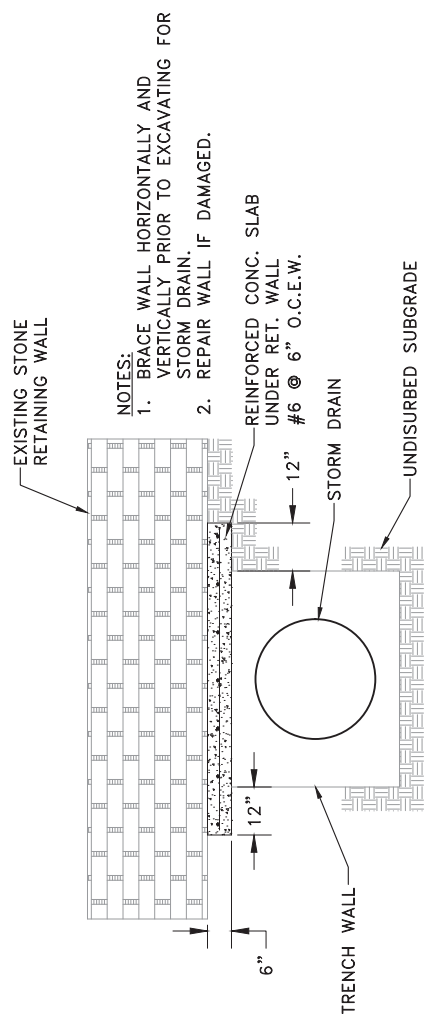
PROPOSED

CONTOUR	CL
SPOT ELEVATION	SE
SPOT CURB ELEVATION	SE(C)
STORM SEWER - PIPE	SS
STORM SEWER - MITERED END SECTION	SS(M)
STORM SEWER - GRATE INLET	SS(G)
STORM SEWER - JUNCTION BOX	SS(J)
STORM SEWER - FLARED END SECTION	SS(F)
STORM SEWER - HEADWALL	SS(H)
STORM SEWER - INLET WITH SINGLE EXTENSION	SS(S)
STORM SEWER - INLET WITH DOUBLE EXTENSION	SS(D)
STORM SEWER - AREA INLET	SS(A)
GRADE BREAK LINE	GBL
HIGH POINT	HP
LOW POINT	LP
CUT LINE	CL
FILL LINE	FL
SANITARY SEWER PIPE	SSP
SANITARY SEWER MANHOLE	SSM
CURB	C
CONCRETE	CON
CONSTRUCTION - ENTRANCE/EXIT	CON
CHECK DAM	CD
DIVERSION BERM	DB
DOWNDRAIN STRUCTURE - TEMPORARY	DD
ROCK DAM	RD
SEDIMENT BARRIER - SILT FENCE	SB
SEDIMENT BARRIER - GRAVEL RING	SDR
SEDIMENT BARRIER - BLOCK & GRAVEL	SD2
SEDIMENT BARRIER - BLOCK	SD3
TEMPORARY SEDIMENT BASIN	SD4
SILT FENCE - TYPE A	SFA
SILT FENCE - TYPE B	SFB
SILT FENCE - TYPE C	SFC
STORM DRAIN OUTLET PROTECTION	ST
SURFACE ROUGHENING	SUR
DISTURBED AREA STABILIZATION - TEMPORARY STABILIZATION	TS1
DISTURBED AREA STABILIZATION - TEMPORARY GRASSING	TS2
DISTURBED AREA STABILIZATION - PERMANENT GRASSING	TS3
MATTING/BLANKETS	MB

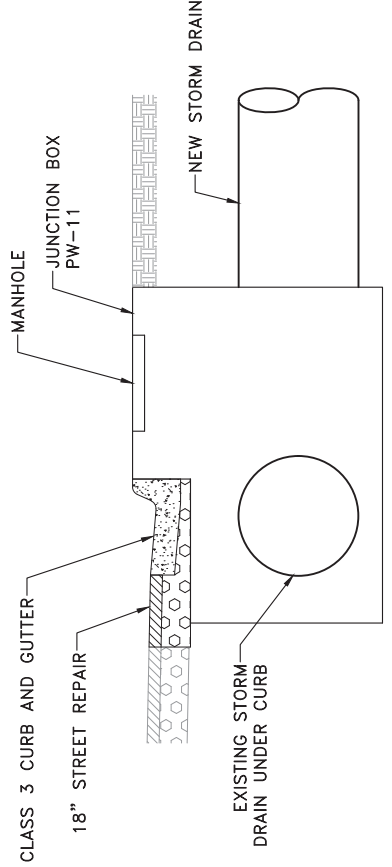
ITEM #	ITEM DESCRIPTION	UNIT	QUANTITY
2.01	Site Preparation (incl. Mobilization)	LS	1
7.04	Concrete Driveway (6" Thick), Standard Finish	SF	439
8.03	Concrete Curb and Gutter (Class 3)	LF	61
9.04	Concrete Sidewalk (4" Thick)	SF	763
10.01	Junction Box	EA	1
10.04	Curb Inlet - 4' Box	EA	3
10.07	Wing 3' Extension	EA	2
13.24C	Storm Drain Pipes, 24", Side Drain	LF	235
13.63	Concrete Plug on Existing Storm Drain	EA	2
14.01	Solid Sodding (Bermuda) Includes 4" Topsoil	SY	261
15.40	Repair Irrigation System	LS	1
16.01	Maintenance of Traffic	LS	1
17.01	Pavement Repairs	SY	25
18.35	Brace Retaining Wall - Stone	LS	1
18.55	Water for Dust Control	GAL	10,000
19.01	Final Clean-Up	LS	1
24.06	Sediment Barrier, Silt Fence (SD1)	EA	4
24.09	Sediment Barrier, Block (SD4)	EA	4
24.11	Silt Fence - Type A (SFA)	LF	260
24.18	Disturbed Area Stabilization - Permanent Grassing (TS3)	AC	0.06
26.10	Trench & Excavation Safety	LS	1



18" STREET REPAIR
NTS



NOTES:
 1. BRACE WALL HORIZONTALLY AND VERTICALLY PRIOR TO EXCAVATING FOR STORM DRAIN.
 2. REPAIR WALL IF DAMAGED.




JUNCTION BOX UNDER CURB
NTS

SP-18.35 BRACE RETAINING WALL-STONE
NTS

REVISIONS	DATE

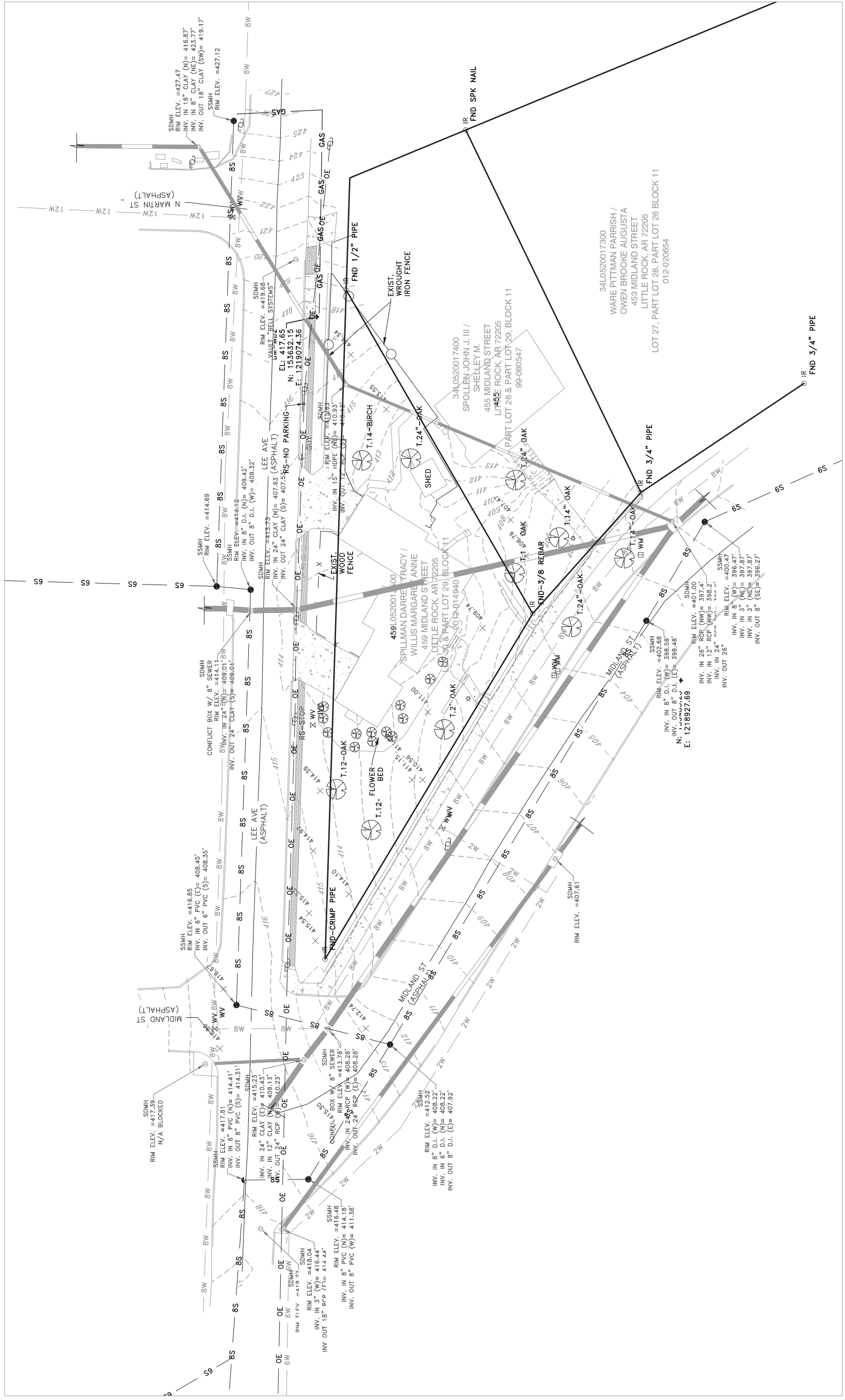
CITY OF LITTLE ROCK, ARKANSAS
MIDLAND DRAINAGE
EXISTING CONDITIONS




DEPARTMENT OF PUBLIC WORKS
CIVIL ENGINEERING
701 W. MARKHAM
LITTLE ROCK, ARKANSAS 72201

PRELIMINARY

DRAWN BY KMH	DESIGNED KMH	CHECKED FJS	DATE 7-7-2022
PROJECT NO. WARD 3	SCALE 1"=20'	SHEET NO. C3	






GRAPHIC SCALE
0 10 20 40 60 80

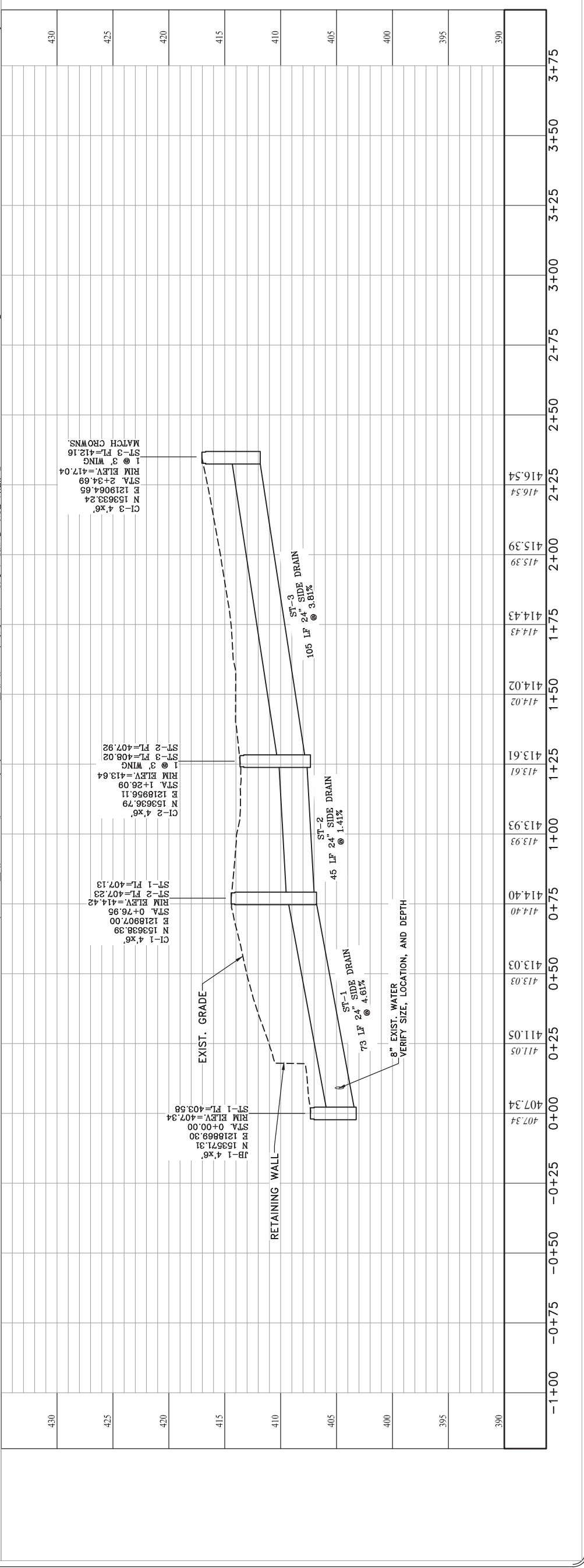
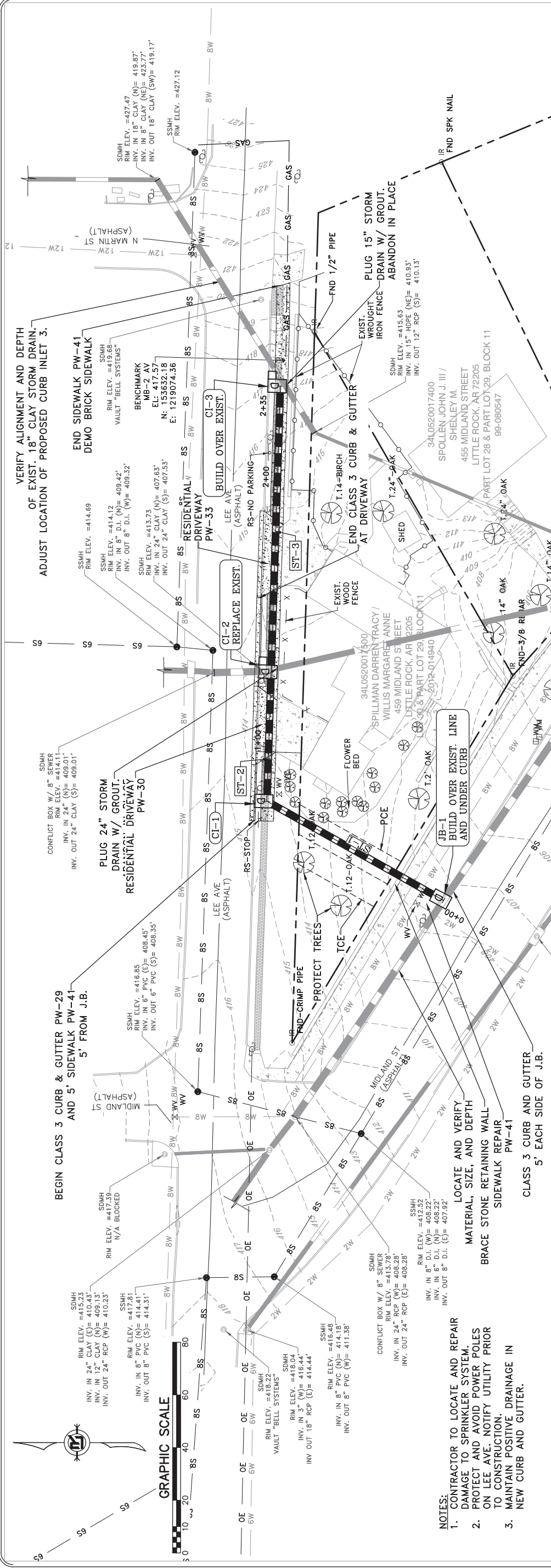
REVISIONS	DATE

CITY OF LITTLE ROCK, ARKANSAS
MIDLAND DRAINAGE
PLAN AND PROFILE


DEPARTMENT OF PUBLIC WORKS
CIVIL ENGINEERING
701 W. MARKHAM
LITTLE ROCK, ARKANSAS 72201



DRAWN BY	KMH
DESIGNED	KMH
CHECKED	FJS
DATE	7-7-2022
SCALE	1"=20'
PROJECT NO.	WARD 3
SHEET NO.	C4



REVISIONS	DATE

CITY OF LITTLE ROCK, ARKANSAS

MIDLAND DRAINAGE


EROSION CONTROL

DEPARTMENT OF PUBLIC WORKS

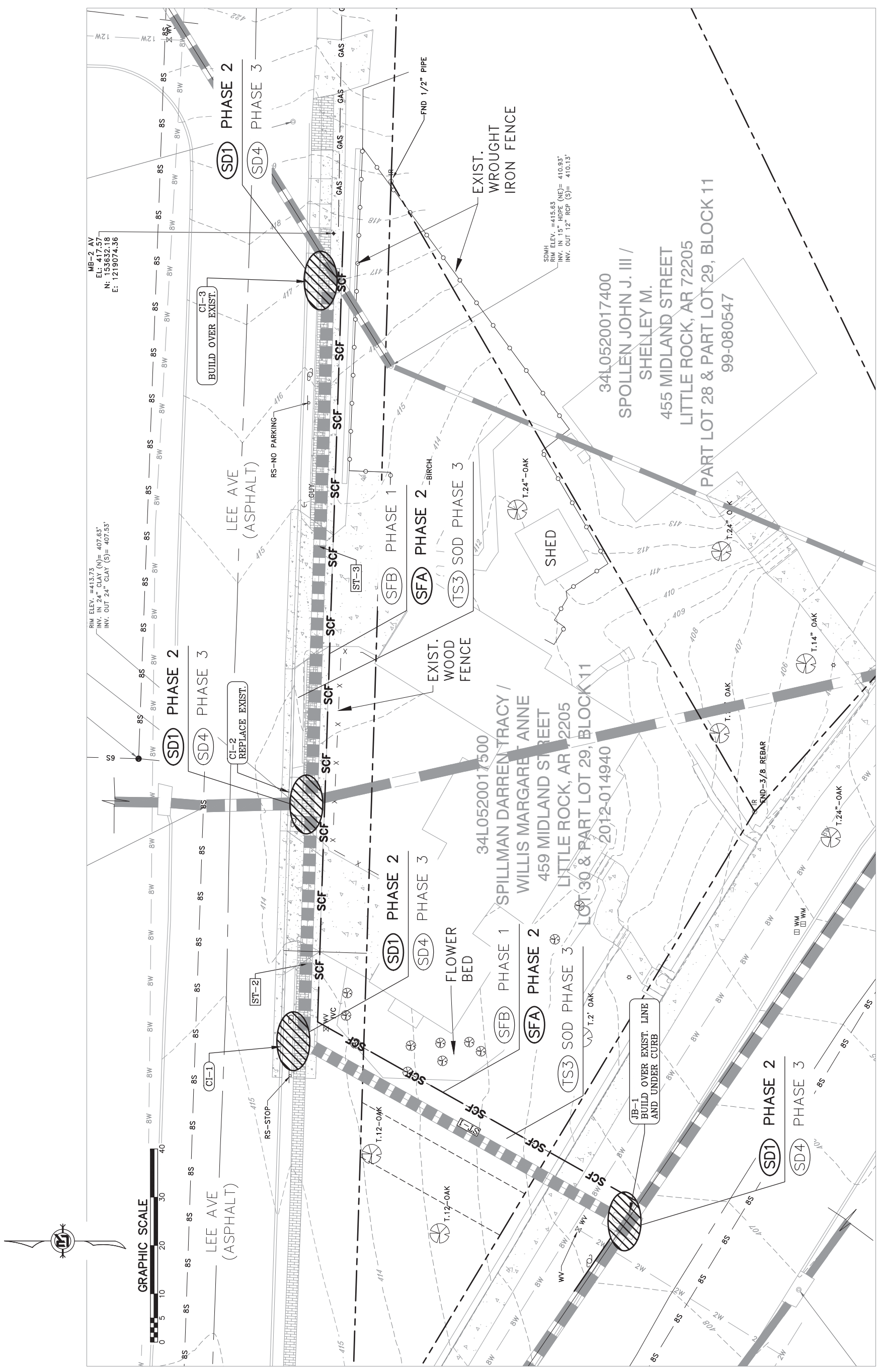
CIVIL ENGINEERING

701 W. MARKHAM

LITTLE ROCK, ARKANSAS 72201




DRAWN BY	KMH
DESIGNED	KMH
CHECKED	FJS
DATE	7-7-2022
SCALE	1"=20'
PROJECT NO.	WARD 3
SHEET NO.	C5



PHASING LEGEND:
 PHASE 1 (INITIAL STRIP AND DEMOLITION)
 PHASE 2 (NEW DRAINAGE AND BASE COURSE IN PLACE)
 PHASE 3 (PAVED, GRASS NOT YET ESTABLISHED)