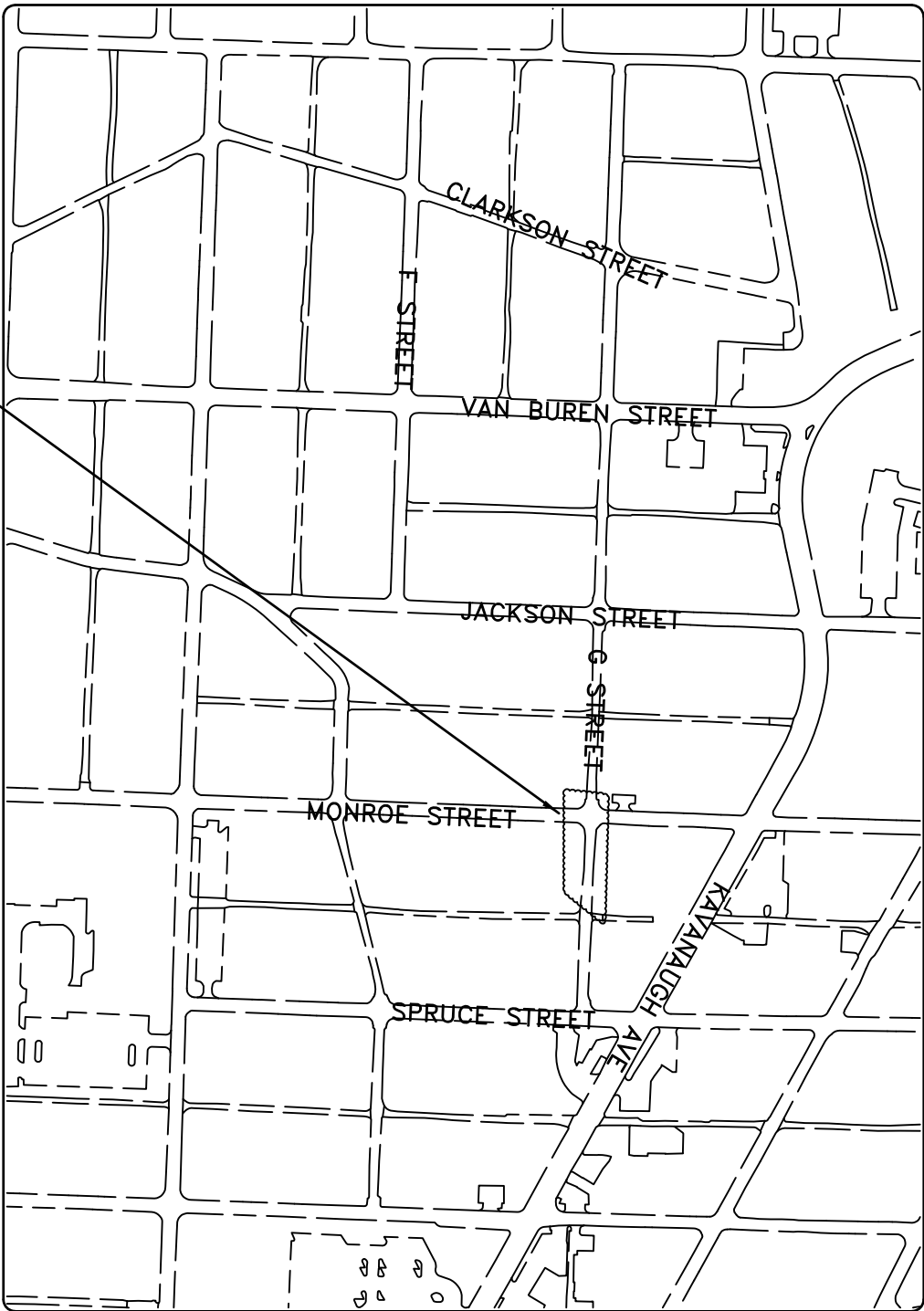


PROJECT LOCATION – WARD 3

CLR PROJECT G ST AT MONROE ST DRAINAGE IMPROVEMENTS LITTLE ROCK, ARKANSAS



PROJECT
LOCATION

DEPARTMENT OF PUBLIC WORKS
CIVIL ENGINEERING
701 WEST MARKHAM STREET
LITTLE ROCK, ARKANSAS 72201

SHEET NO.	TITLE
C1	COVER SHEET
C2	GENERAL NOTES, LEGEND
C3	AND QUANTITIES PLAN VIEW

REVISIONS	DATE

CITY OF LITTLE ROCK, ARKANSAS G STREET AND MONROE DRAINAGE IMPROVEMENTS	COVER SHEET
--	-------------

DEPARTMENT OF PUBLIC WORKS CIVIL ENGINEERING 701 W. MARKHAM LITTLE ROCK, ARKANSAS 72201
--

--

DRAWN BY VH
DESIGNED DH
CHECKED DH
DATE 08-08-2022
SCALE NTS
PROJECT NO.
SHEET NO. C1

REVISIONS	DATE

CITY OF LITTLE ROCK, ARKANSAS

G ST AT MONROE ST DRAINAGE IMPROVEMENTS


QUANTITY SHEET

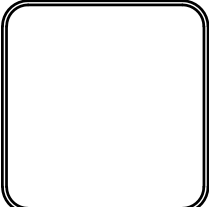
DEPARTMENT OF PUBLIC WORKS

CIVIL ENGINEERING

701 W. MARKHAM

LITTLE ROCK, ARKANSAS 72201





DRAWN BY
VH

DESIGNED
DH

CHECKED
DH

DATE
08-08-2022

SCALE
NTS

PROJECT NO.

CLR #??

SHEET NO.
C2

	G ST & MONROE ST DRAINAGE IMPROVEMENTS		
		8-Aug-22	
ITEM #	ITEM DESCRIPTION	UNIT	QUANTITY
2.01	SITE PREPERATION	LS	1
4.01	AGGREGATE BASE COURSE (DRIVEWAY)	TON	15
7.06	CONCRETE CURB & GUTTER	LF	10
9.04	CONCRETE SIDEWALK	SF	20
10.01	JUNCTION BOX (4' BOX IN ROADWAY)	EA	1
10.02	AREA INLET (4' BOX)	EA	2
13.18C	18" CROSS DRAIN	LF	128
14.01	SOLD SOD	SY	50
17.01	PAVEMENT REPAIRS	SY	40
19.1	FINAL CLEAN-UP	LS	1

NOTES:

THIS AREA IS FOR ANY SPECIAL CONDITIONS OR NOTES THAT NEED TO BE ADDED TO THE PLAN SET THAT ARE NOT COVERED IN THE BID/CONTRACT DOCUMENTS OR STANDARD SPECIFICATIONS.


EXISTING


IRON ROD
PR. NAIL
R.R. SPIKE
CONC. MONUMENT
WATER VALVE
WATER METER
FIRE HYDRANT
GAS METER
GAS VALVE
CLEAN-OUT
GUARD POST (BOLLARD)
SIGN POST
BENCHMARK

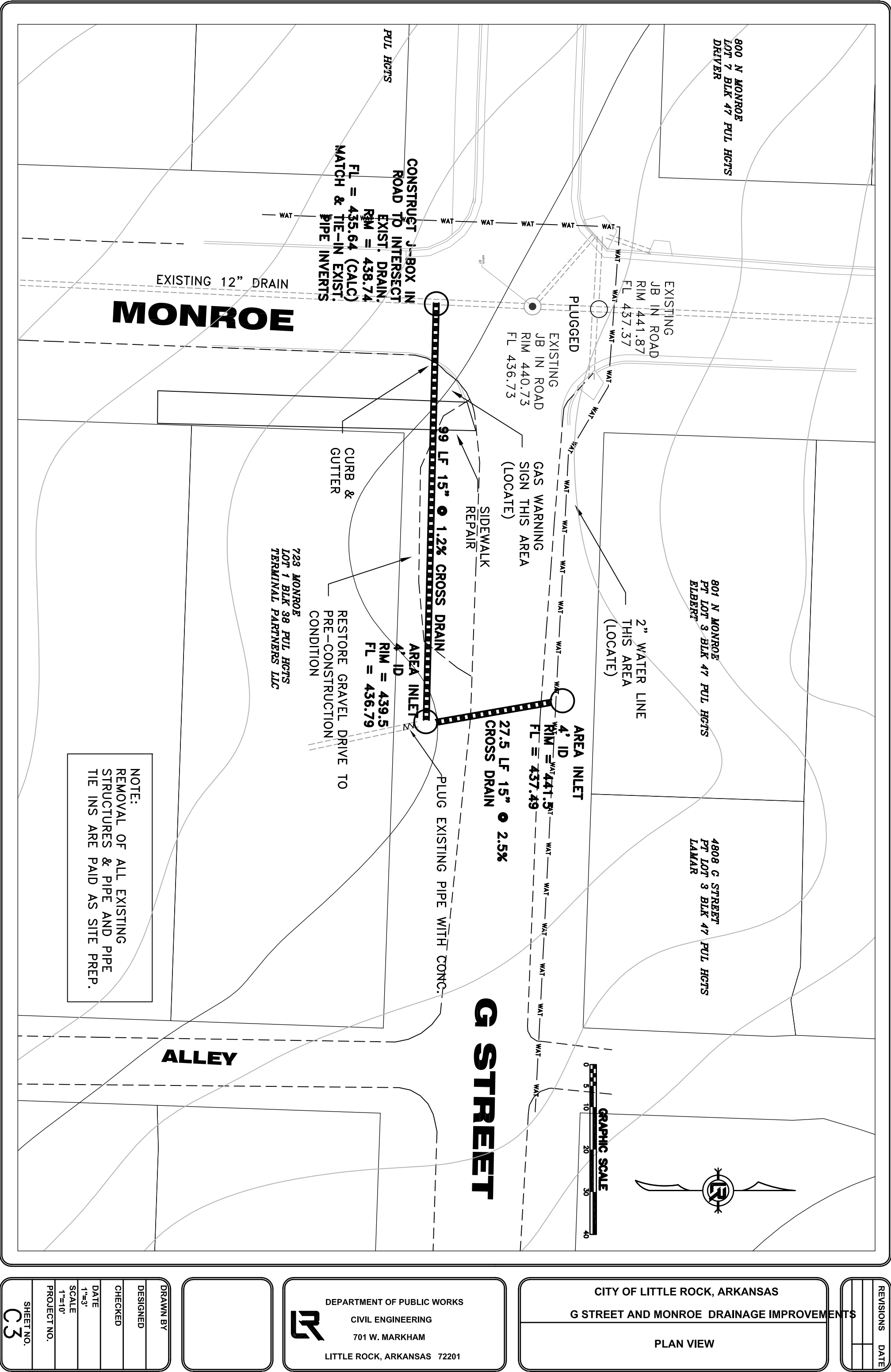
○ IR
○ PK
○ R.R.(Sp)
□ CM
Σ WV
Σ WM
▽ FFL
□ G.M.
⊗ G.V.
○ C.D.
• GP

PROPOSED

PROPOSED CONTOUR
PROPOSED SPOT ELEVATION
PROPOSED SPOT CURB ELEVATION
STORM SEWER – PIPE
STORM SEWER – INTERED END SECTION
STORM SEWER – GRADE INLET
STORM SEWER – JUNCTION BOX
STORM SEWER – FLARED END SECTION
STORM SEWER – HEADWALL
STORM SEWER – SINGLE WING
STORM SEWER – DOUBLE WING
STORM SEWER – AREA INLET
GRADE BREAK LINE
HIGH POINT
LOW POINT
CUT LINE
FILL LINE
SANITARY SEWER PIPE
SANITARY SEWER MANHOLE
PROPOSED CURB
PROPOSED CONCRETE
CONSTRUCTION – ENTRANCE/EXIT
CHECK DAM
DIVERSION BERM
DOWNSTREAM STRUCTURE – TEMPORARY
ROCK DAM
SEDIMENT BARRIER – SILT FENCE
SEDIMENT BARRIER – GRAVEL RING
SEDIMENT BARRIER – BLOCK & GRAVEL
SEDIMENT BARRIER – BLOCK
TEMPORARY SEDIMENT BASIN
SLIT FENCE – TYPE A
SLIT FENCE – TYPE B
SLIT FENCE – TYPE C
STORM DRAIN OUTLET PROTECTION
SURFACE ROUGHENING
DISTURBED AREA STABILIZATION –TEMPORARY STABILIZATION
DISTURBED AREA STABILIZATION –TEMPORARY GRASSING
DISTURBED AREA STABILIZATION –PERMANENT GRASSING
MATTING/BLANKETS







REVISIONS		DATE

CITY OF LITTLE ROCK, ARKANSAS

G STREET AND MONROE DRAINAGE IMPROVEMENTS

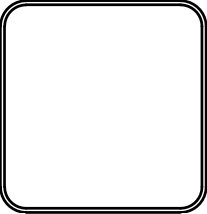
PLAN VIEW

DEPARTMENT OF PUBLIC WORKS

CIVIL ENGINEERING

701 W. MARKHAM

LITTLE ROCK, ARKANSAS 72201



DRAWN BY	
DESIGNED	
CHECKED	
DATE	
SCALE	
PROJECT NO.	
SHEET NO.	C3