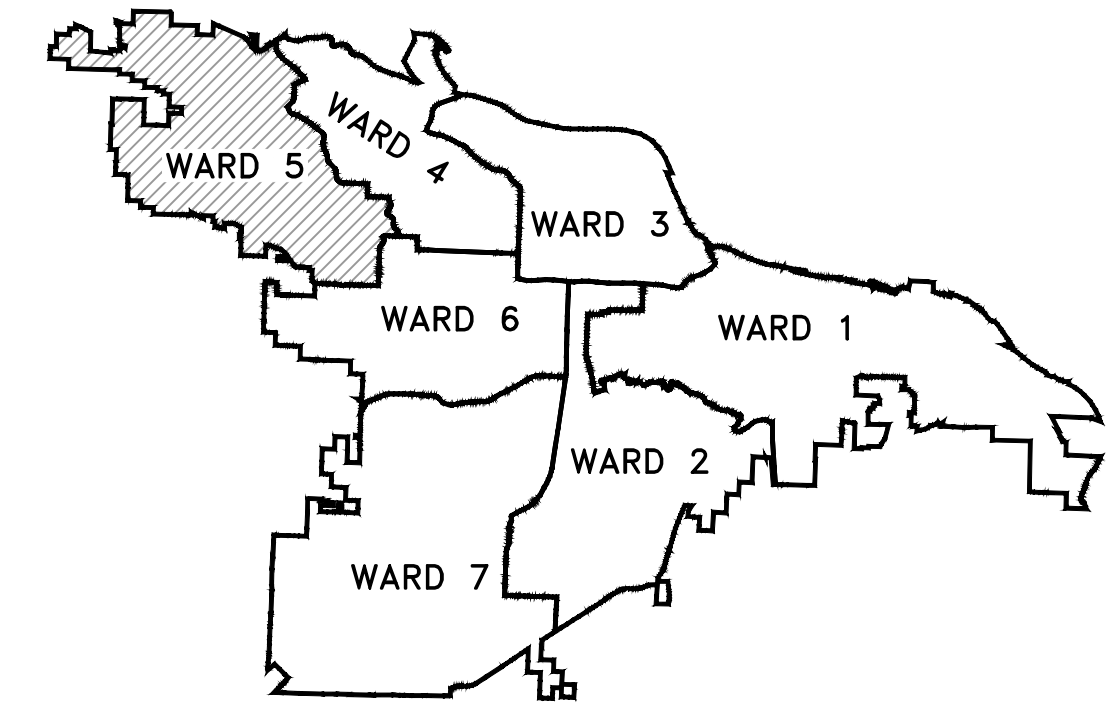
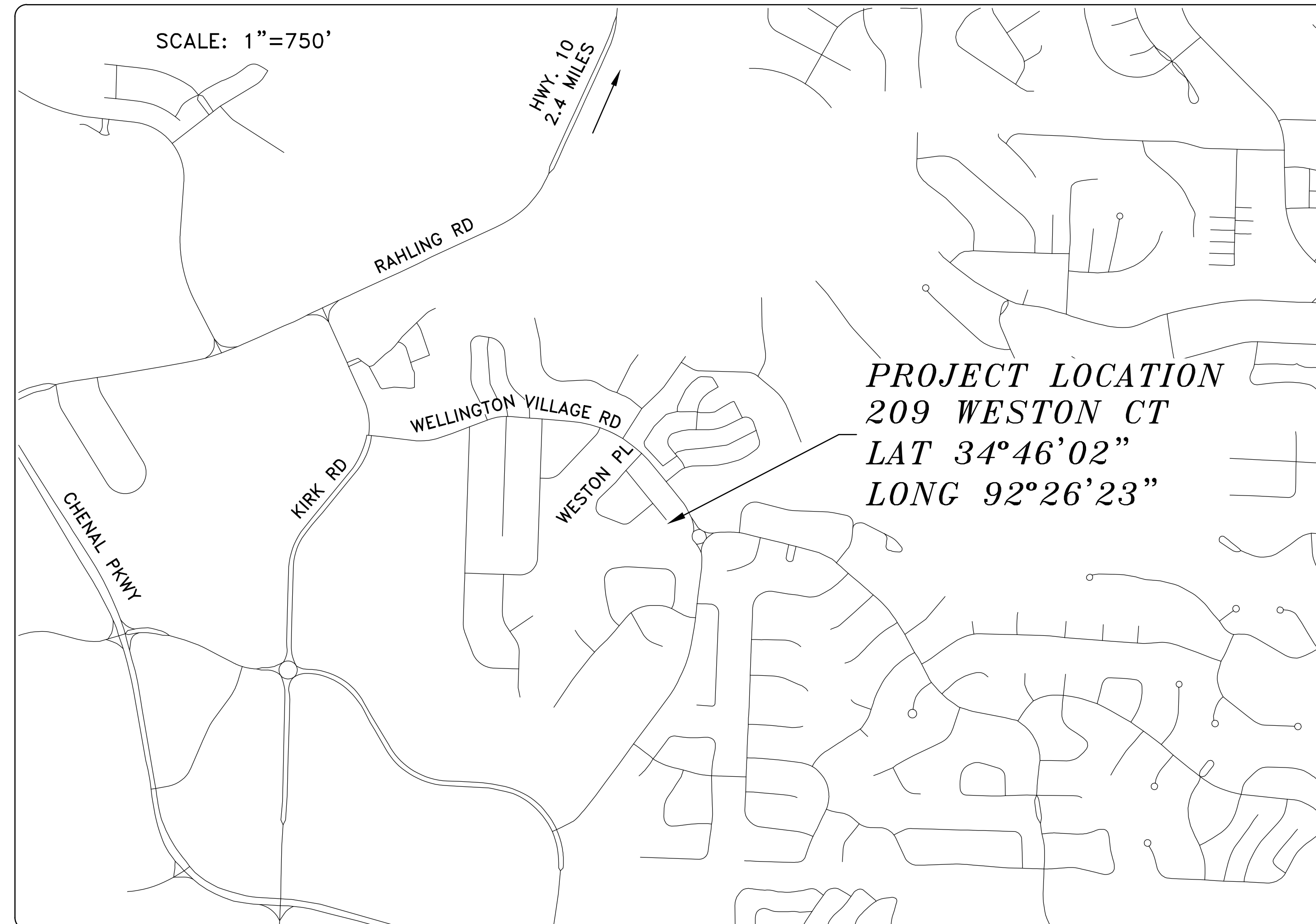
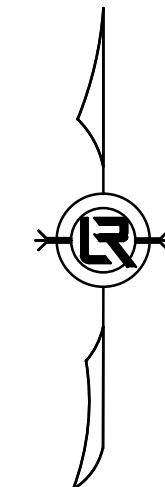


WESTON 209 DRAINAGE

15% SUBMITTAL

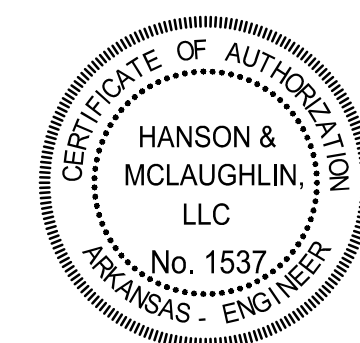


PROJECT LOCATION - WARD 3

SHEET NO.	TITLE
C1	COVER SHEET
C2	LEGEND AND QUANTITIES
C3	EXISTING CONDITIONS
C4	PLAN AND PROFILE



**Know what's below.
Call before you dig.**



DEPARTMENT OF PUBLIC WORKS
CIVIL ENGINEERING
701 WEST MARKHAM STREET
LITTLE ROCK, ARKANSAS 72201

HANSON & MCLAUGHLIN, LLC
320 EXECUTIVE COURT, SUITE 202
LITTLE ROCK, ARKANSAS 72205
(501) 716-2850

REVISIONS	DATE

WESTON 209 DRAINAGE
CITY OF LITTLE ROCK, ARKANSAS
COVER SHEET

DEPARTMENT OF PUBLIC WORKS
CIVIL ENGINEERING
701 W. MARKHAM
LITTLE ROCK, ARKANSAS 72201



DRAWN BY KMH
DESIGNED KMH
CHECKED FJS
DATE 10-25-2023
SCALE N.T.S.
PROJECT NO. 05-22-DR-007
SHEET NO. C1

CLR PROJECT 05-22-DR-007
 WESTON 209 DRAINAGE
 OCTOBER 25, 2023

ITEM #	ITEM DESCRIPTION	UNIT	QUANTITY
2.01	Site Preparation (Incl. Mobilization)	LS	1
7.06	Concrete Driveway (6" Thick), Standard Finish	SF	190
8.03	Concrete Curb and Gutter (Class 3)	LF	20
10.04	Curb Inlet - 4' Box	EA	1
10.07	Wing 3' Extension	EA	1
11.05	Reinforced Concrete Headwall	EA	1
13.18C	Storm Drain Pipe, 18", Cross Drain	LF	50
13.18C	Storm Drain Pipe, 18", Side Drain	LF	229
13.61	Tie Into Existing Junction Box	EA	4
14.01	Solid Sodding (Bermuda) Includes 4" Topsoil	SY	520
15.40	Repair Irrigation System	LS	1
16.01	Maintenance of Traffic	LS	1
17.01	Pavement Repairs	SY	30
18.01	Remove and Replace Fence (Match Existing)	LF	122
18.45	Riprap	CY	4
18.55	Water for Dust Control	GAL	10,000
19.01	Final Clean-Up	LS	1
24.02	Check Dam (CD)	CY	20
24.06	Sediment Barrier, Silt Fence (SD1)	EA	4
24.09	Sediment Barrier, Block (SD4)	EA	4
24.11	Silt Fence - Type A (SFA)	LF	300
24.12	Silt Fence - Type B (SFB)	LF	300
24.18	Disturbed Area Stabilization - Permanent Grassing (TS3)	AC	0.10
26.10	Trench & Excavation Safety	LS	1

EXISTING	PROPOSED
IRON ROD	○ IR
PK NAIL	○ PK
R.R. SPIKE	○ RR(Sp)
CONC. MONUMENT	□ CM
WATER VALVE	⊗ WV
WATER METER	⊞ WM
FIRE HYDRANT	⊕ FH
GAS METER	⊞ GM
GAS VALVE	⊗ GV
CLEAN-OUT	○ CO
GUARD POST (BOLLARD)	● GP
SIGN POST	—
BENCHMARK	⊕
STORM SEWER MANHOLE	⊕
SANITARY SEWER MANHOLE	⊕
TELEPHONE MANHOLE	⊕
ELECTRIC MANHOLE	⊕
TELEPHONE BOX	⊕
ELECTRIC BOX	⊕
CABLE BOX	⊕
UTILITY POLE	⊕
GUY WIRE	—
LIGHT POLE	⊕
POST OR POLE (TYPE AS NOTED)	⊕
MAILBOX	⊕
DECIDUOUS TREE	⊕
EVERGREEN/CONIFEROUS TREE	⊕
BUSH	⊕
PROPERTY LINE	—
SETBACK LINE	—
EASEMENT LINE	—
CURB	—
FENCE	— X — X —
OVERHEAD UTILITY	—
UNDERGROUND TELEPHONE	—
UNDERGROUND ELECTRIC	—
WATER LINE	—
SEWER LINE	— SAN —
GAS LINE	—
STORM SEWER/CULVERT	— 24" CMP/RCP/DIP —
CONTOUR LINE	— 650 —
CONTOUR	○ 25
SPOT ELEVATION	○ 25.00
SPOT CURB ELEVATION	○ 25.50
STORM SEWER — PIPE	—
STORM SEWER — MITERED END SECTION	—
STORM SEWER — GRATE INLET	—
STORM SEWER — JUNCTION BOX	—
STORM SEWER — FLARED END SECTION	—
STORM SEWER — HEADWALL	—
STORM SEWER — INLET WITH SINGLE EXTENSION	—
STORM SEWER — INLET WITH DOUBLE EXTENSION	—
STORM SEWER — AREA INLET	—
GRADE BREAK LINE	—
HIGH POINT	HP
LOW POINT	LP
CUT LINE	—
FILL LINE	—
SANITARY SEWER PIPE	—
SANITARY SEWER MANHOLE	⊕
CURB	—
CONCRETE	—
CONSTRUCTION — ENTRANCE/EXIT	⊕ CO
CHECK DAM	⊕ CD
DIVERSION BERM	⊕ DI
DOWNDRAIN STRUCTURE — TEMPORARY	⊕ DN
ROCK DAM	⊕ RD
SEDIMENT BARRIER — SILT FENCE	⊕ SD1
SEDIMENT BARRIER — GRAVEL RING	⊕ SD2
SEDIMENT BARRIER — BLOCK & GRAVEL	⊕ SD3
SEDIMENT BARRIER — BLOCK	⊕ SD4
TEMPORARY SEDIMENT BASIN	⊕ SB1
SILT FENCE — TYPE A	⊕ SFA
SILT FENCE — TYPE B	⊕ SFB
SILT FENCE — TYPE C	⊕ SFC
STORM DRAIN OUTLET PROTECTION	⊕ ST
SURFACE ROUGHENING	⊕ SU
DISTURBED AREA STABILIZATION — TEMPORARY STABILIZATION	⊕ TS1
DISTURBED AREA STABILIZATION — TEMPORARY GRASSING	⊕ TS2
DISTURBED AREA STABILIZATION — PERMANENT GRASSING	⊕ TS3
MATTING/BLANKETS	⊕ Mb

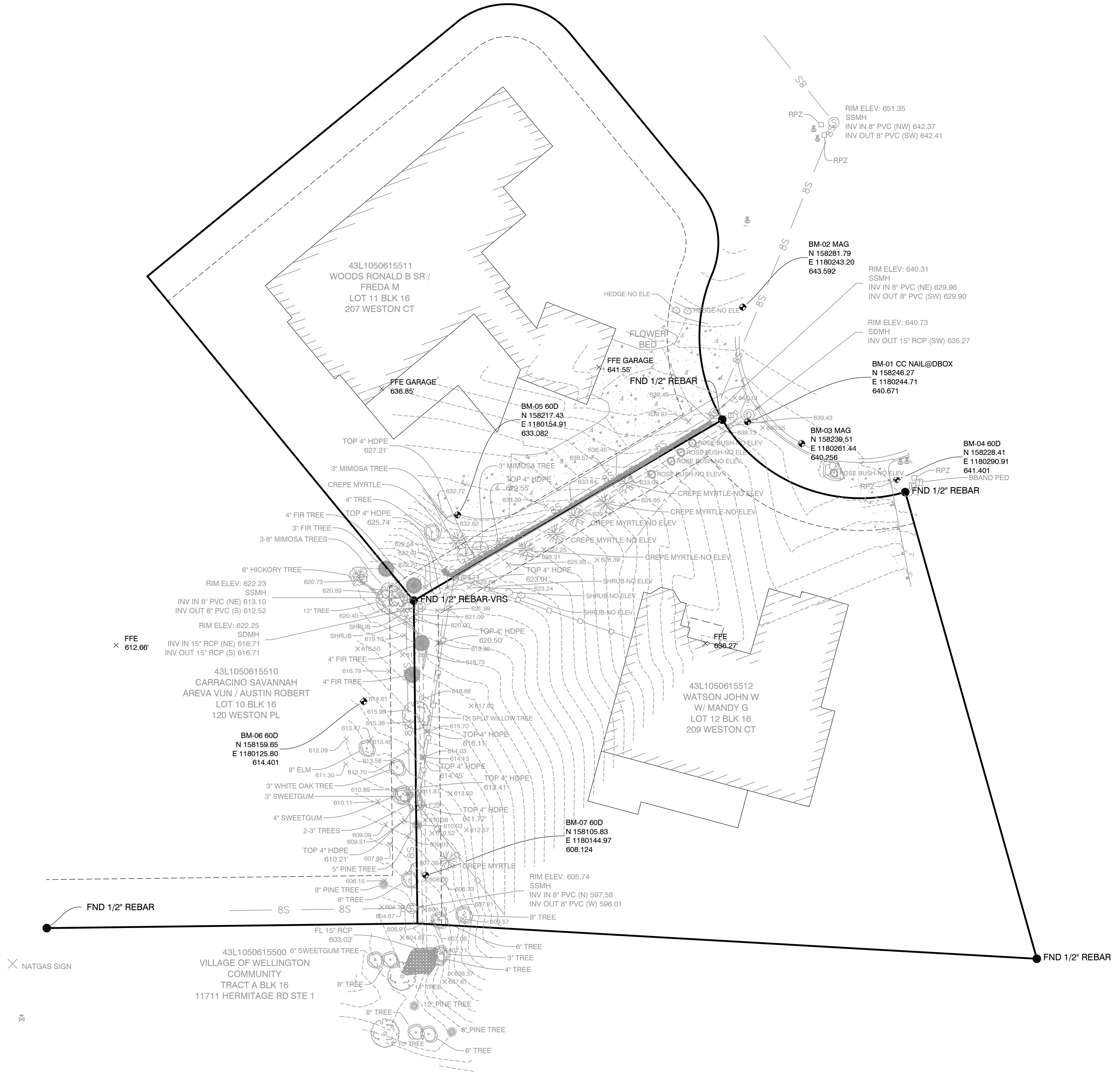
REVISIONS	DATE

WESTON 209 DRAINAGE
 CITY OF LITTLE ROCK, ARKANSAS
 LEGEND AND QUANTITIES

DEPARTMENT OF PUBLIC WORKS
 CIVIL ENGINEERING
 701 W. MARKHAM
 LITTLE ROCK, ARKANSAS 72201



DRAWN BY
 KMH
 DESIGNED
 KMH
 CHECKED
 FJS
 DATE
 10-25-2023
 SCALE
 N.T.S.
 PROJECT NO.
 05-22-DR-007
 SHEET NO.
 C2



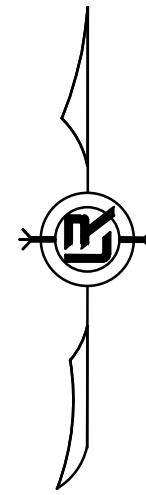
REVISIONS	DATE

WESTON 209 DRAINAGE
CITY OF LITTLE ROCK, ARKANSAS
 EXISTING CONDITIONS

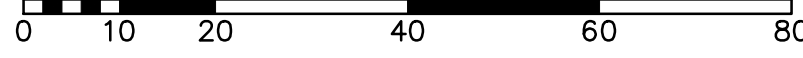
DEPARTMENT OF PUBLIC WORKS
 CIVIL ENGINEERING
 701 W. MARKHAM
 LITTLE ROCK, ARKANSAS 72201



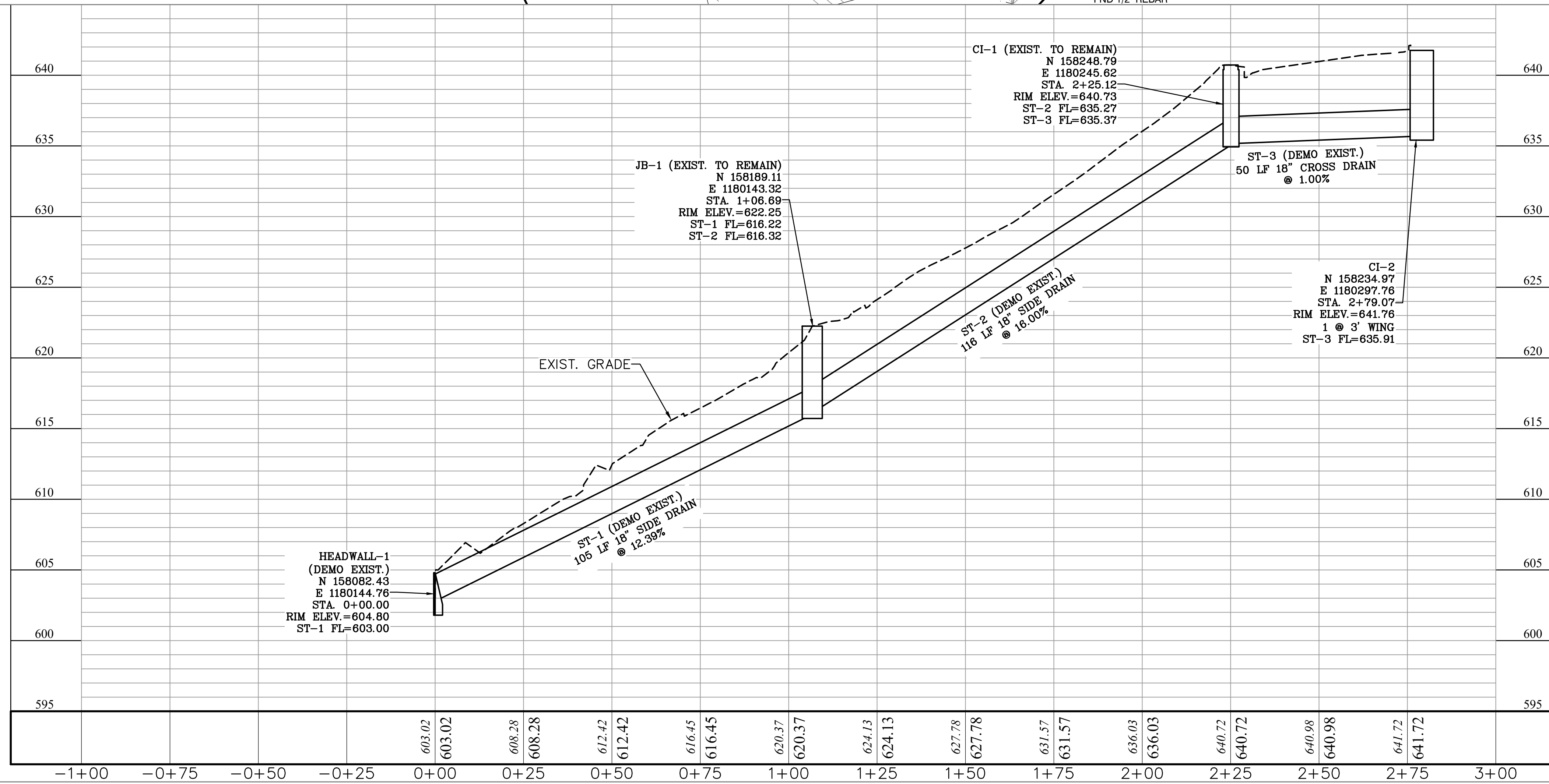
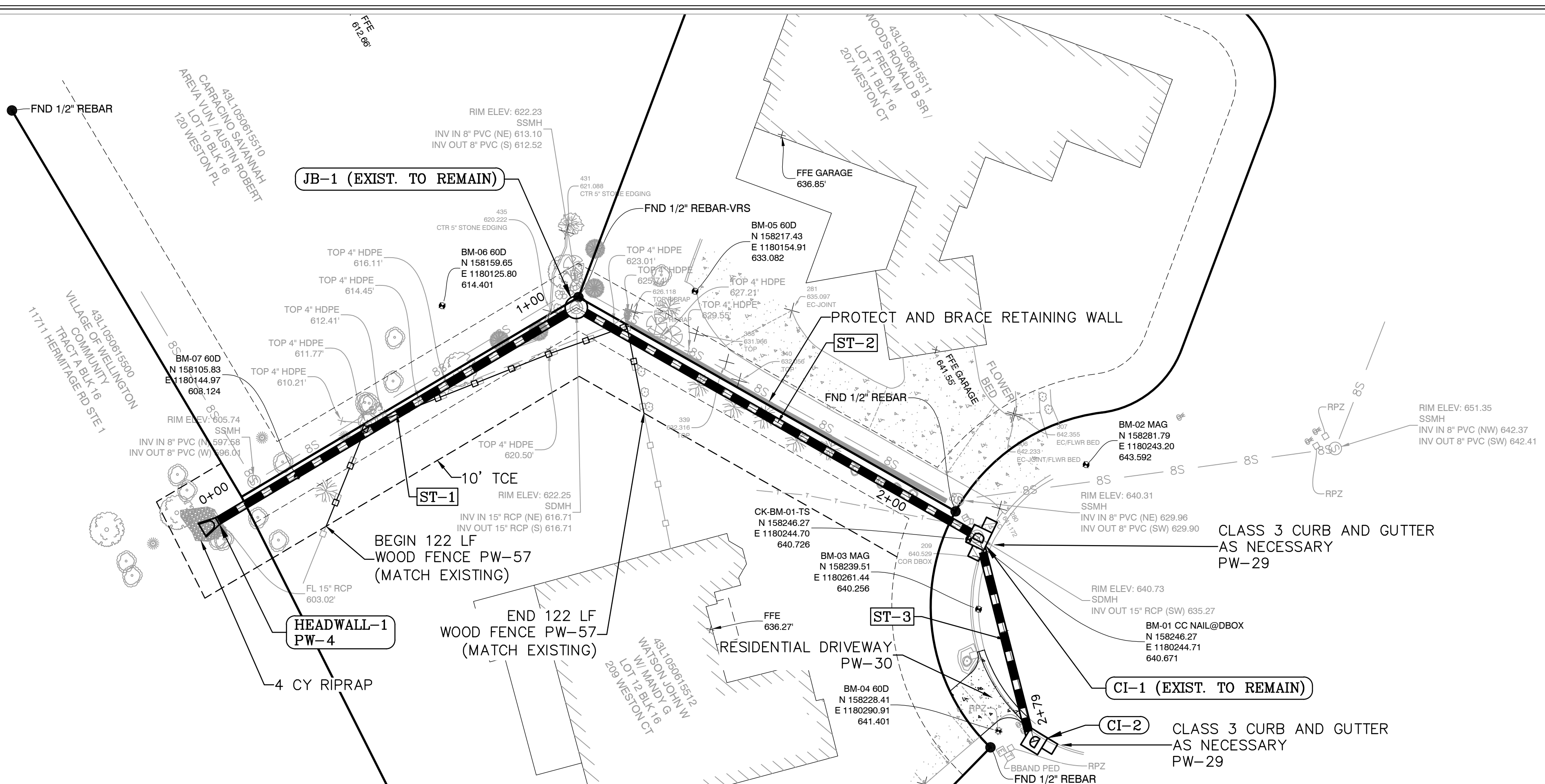
DRAWN BY
KMH
DESIGNED
KMH
CHECKED
FJS
DATE
10-25-2023
SCALE
N.T.S.
PROJECT NO.
05-22-DR-007
SHEET NO.
C3



GRAPHIC SCALE



NOTES:
1. DEMO EXISTING DRAINAGE.



REVISIONS DATE

WESTON 209 DRAINAGE
CITY OF LITTLE ROCK, ARKANSAS
PLAN AND PROFILE

DEPARTMENT OF PUBLIC WORKS
CIVIL ENGINEERING
701 W. MARKHAM
LITTLE ROCK, ARKANSAS 72201



DRAWN BY
KMH
DESIGNED
KMH
CHECKED
FJS
DATE
10-27-2023
SCALE
N.T.S.
PROJECT NO.
05-22-DR-007
SHEET NO.
C4