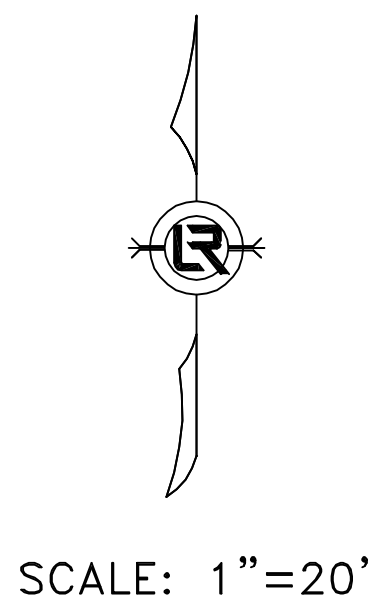


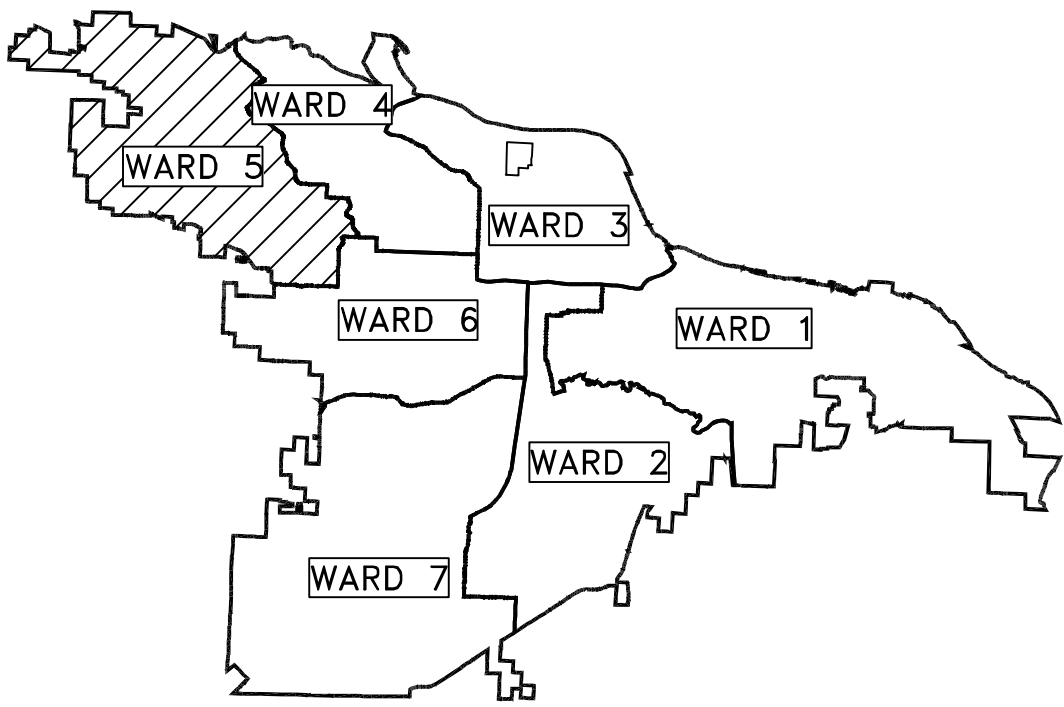
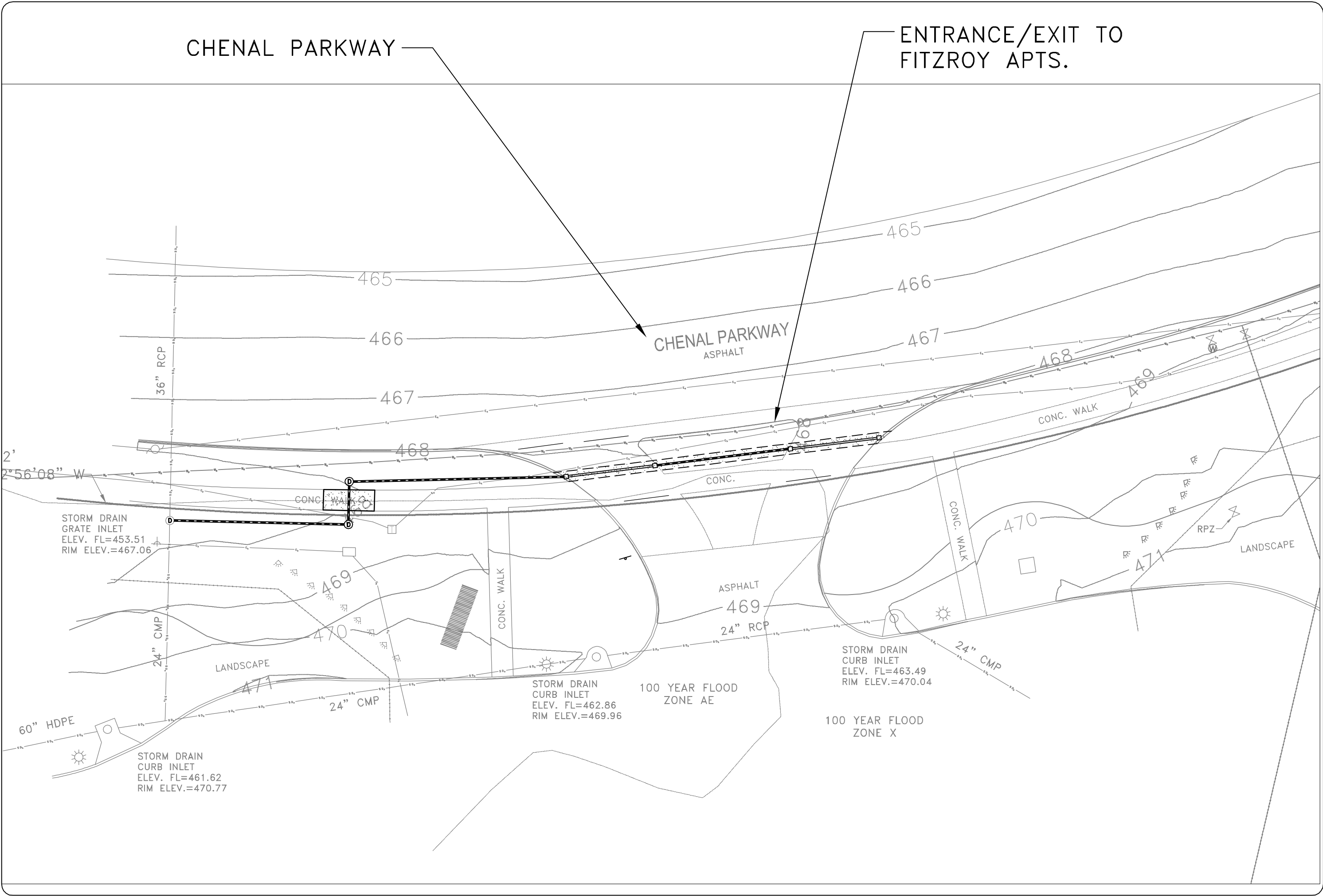
CLR PROJECT 05-22-DR-37

WARD 5

CHENAL PARKWAY AT FITZROY APT DRAINAGE



2023-2025
BOND PROGRAM



PROJECT LOCATION – WARD 3
34°46'09.25"N 92°20'13.43"W
34.7692–92.3371

SHEET NO.	TITLE
C1	COVER SHEET
C2	LEGEND AND DETAIL SHEET
C3	DETAIL SHEET
C4	PLAN AND PROFILE SHEET
C5	EROSION CONTROL SHEET





CROMWELL

1300 east 6th Street
501.372.2900

little rock, ar 72202
cromwell.com

DEPARTMENT OF PUBLIC WORKS
CIVIL ENGINEERING
701 WEST MARKHAM STREET
LITTLE ROCK, ARKANSAS 72201

REVISIONS	DATE

CITY OF LITTLE ROCK, ARKANSAS


WARD 5 05-22-DR-37 CHENAL PARKWAY
AT FITZROY APT

COVER SHEET

DEPARTMENT OF PUBLIC WORKS

CIVIL ENGINEERING

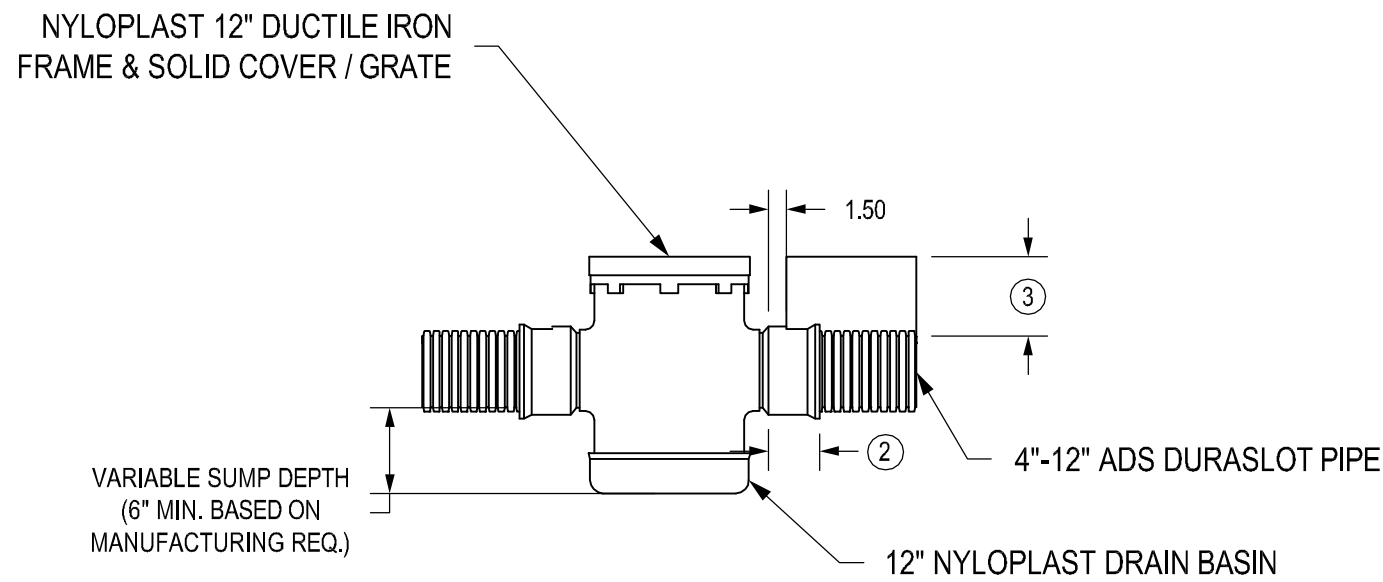
701 W. MARKHAM



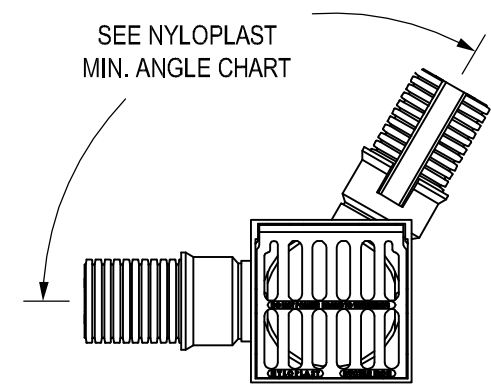
LITTLE ROCK, ARKANSAS 72201

15% SUBMITTAL

DRAWN BY MJT
DESIGNED MJT
CHECKED CGW
DATE 10-18-2023
SCALE N.T.S.
PROJECT NO. ##
SHEET NO. C1

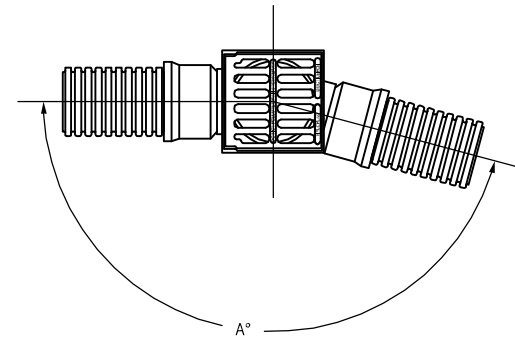
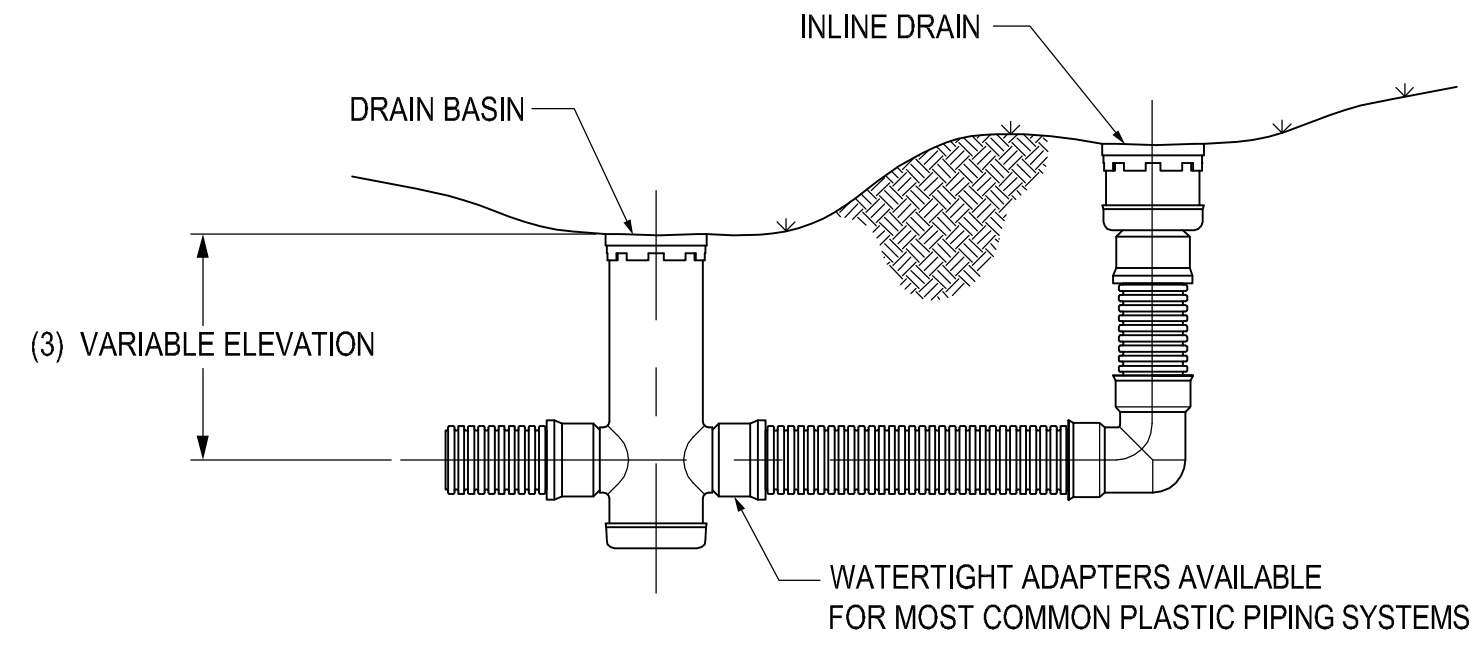


TYPICAL 12" BASIN



CHANGE IN PIPE ANGLES

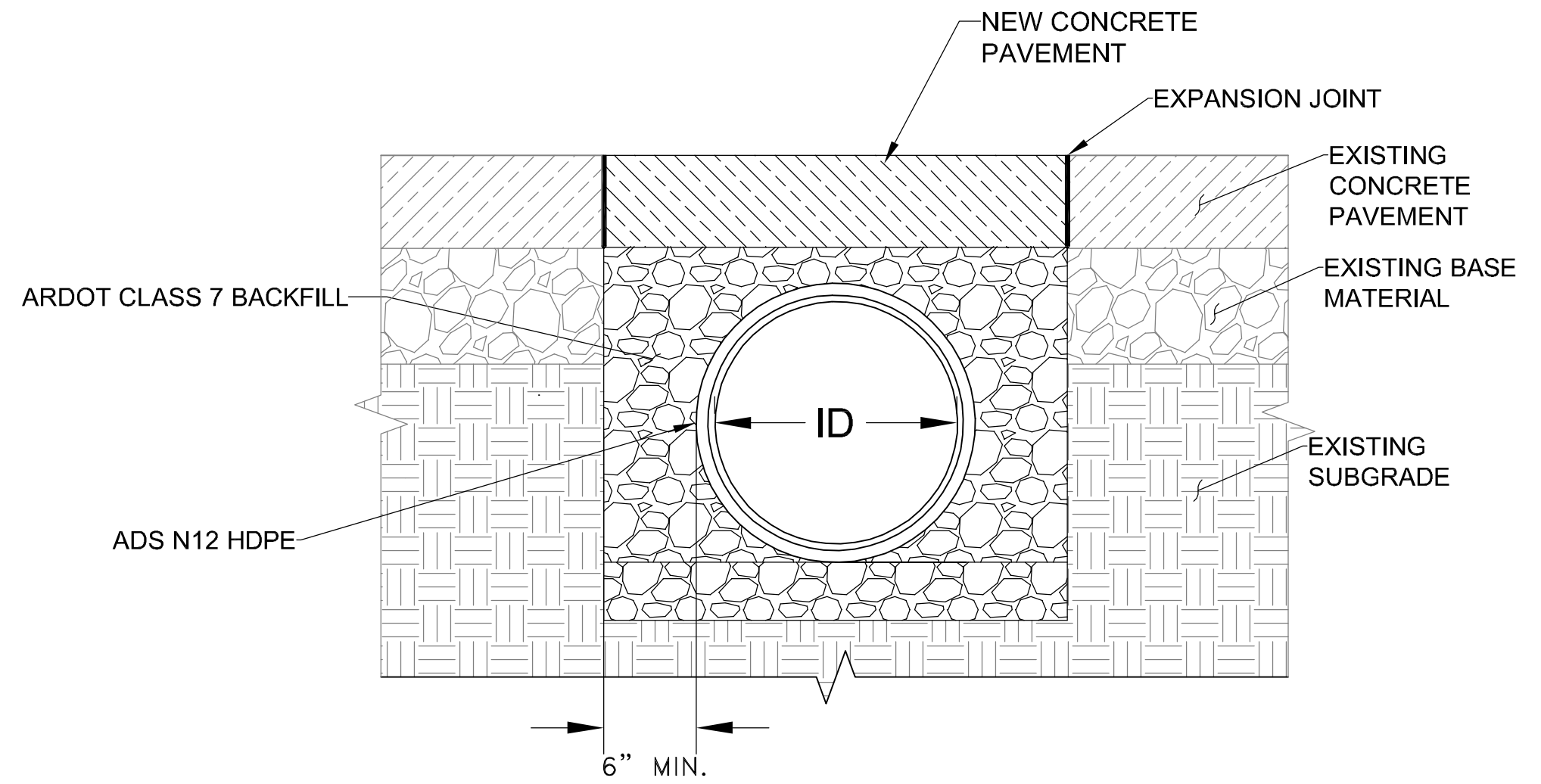
NOTE:
DETAILS ARE PULLED FROM
ADVANCED DRAINAGE
SYSTEM, INC (ADS) WEBSITE
- USED AS BASIS OF DESIGN
- SUBMIT PROPOSED
ALTERNATIVE PRIOR TO
CONSTRUCTION



NOTE:
DETAILS ARE PULLED FROM
ADVANCED DRAINAGE
SYSTEM, INC (ADS) WEBSITE
- USED AS BASIS OF DESIGN
- SUBMIT PROPOSED
ALTERNATIVE PRIOR TO
CONSTRUCTION

- 1 - STRUCTURES & ADAPTERS AVAILABLE IN SIZES 8" - 30" - USE 12"
- 2 - ADAPTERS CAN BE MOUNTED ON ANY ANGLE 0° TO 360°, TO DETERMINE MINIMUM ANGLE BETWEEN ADAPTERS SEE DRAWING NO. 7001-110-012

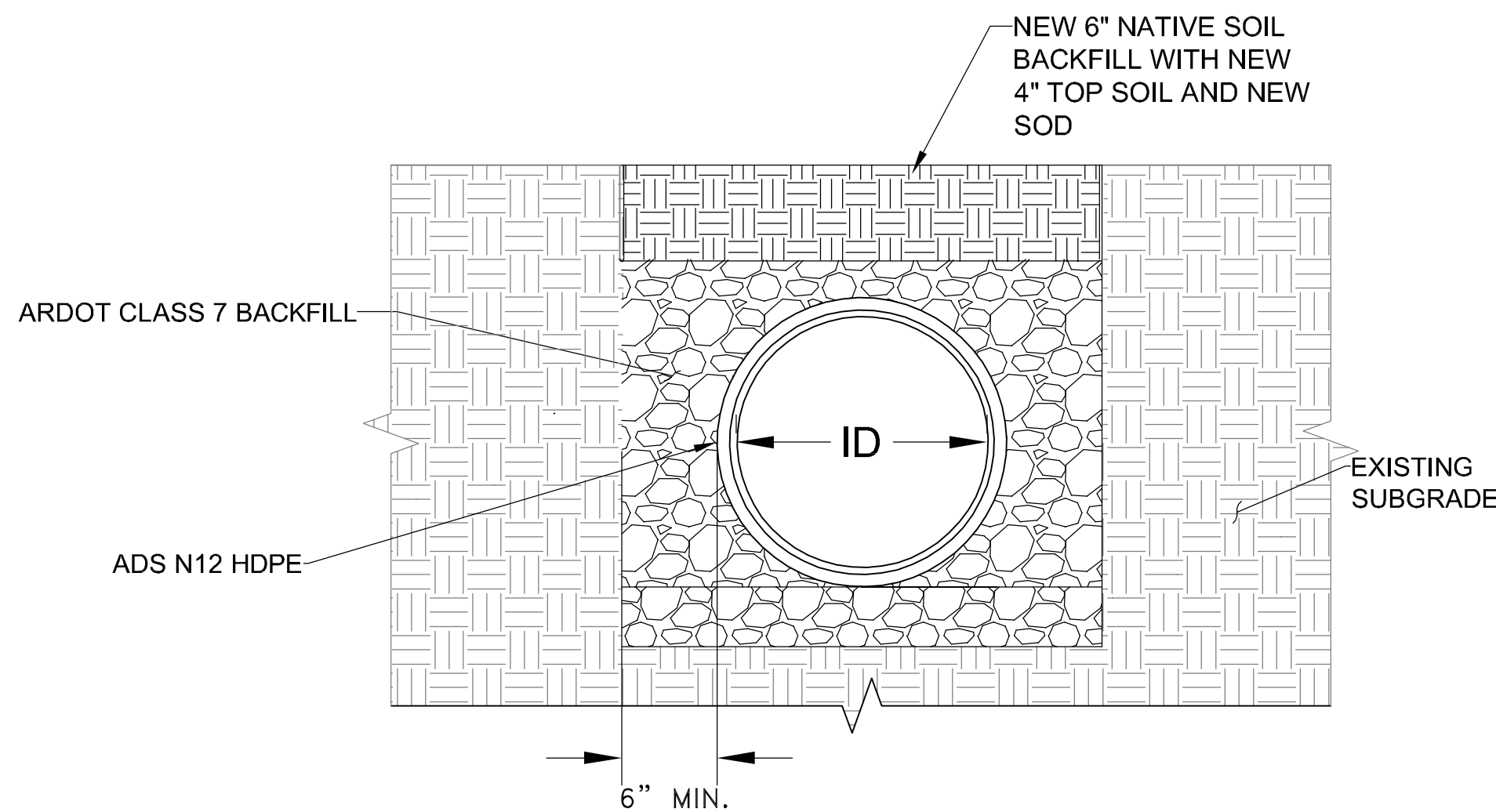
2 NYLOPLAST DRAIN TYPICAL INSTALLATION DETAIL
NOT TO SCALE



3 PIPE EMBEDMENT UNDER PAVEMENT
NOT TO SCALE

- 1 - NYLOPLAST 12" FRAMES & SOLID COVERS/GRATES SHALL CONFORM TO ASTM A 536 GRADE 70-50-05 FOR DUCTILE IRON.
- 2 - ADAPTERS FOR DURASLOT CONNECTION RANGE BETWEEN 4"-24". SEE DRAWING NO. 7001-110-275 FOR ADS N-12 BELL INFORMATION.
- 3 - SLOT HEIGHT VARIES DEPENDING ON DESIGN CRITERIA. SLOT HEIGHT CAN RANGE FROM 2.5" TO 36". 15" - 24" BASINS WILL REQUIRE SLOTS TALLER THAN STANDARD 2.5"-6" SLOTS.
- 4 - ENCASE ADAPTER IN CONCRETE TO SEAL CONNECTION BETWEEN ADS DURASLOT PIPE AND NYLOPLAST TEE BODY.
- 5 - RECTANGULAR SLOTS ARE TO BE CUT INTO BELL ON NYLOPLAST TEE DURING THE MANUFACTURING PROCESS TO ALLOW PIPE AND TEE TO FIT PROPERLY.
- 6 - DIMENSIONS ARE FOR REFERENCE ONLY. ACTUAL DIMENSIONS MAY VARY. DIMENSIONS ARE IN INCHES.

1 NYLOPLAST DRAIN BASIN STANDARD DETAIL
NOT TO SCALE



4 PIPE EMBEDMENT IN SOIL
NOT TO SCALE

REVISIONS DATE

CITY OF LITTLE ROCK, ARKANSAS
WARD 5 05-22-DR-37 CHENAL PARKWAY
AT FITZROY APT
DETAIL SHEET

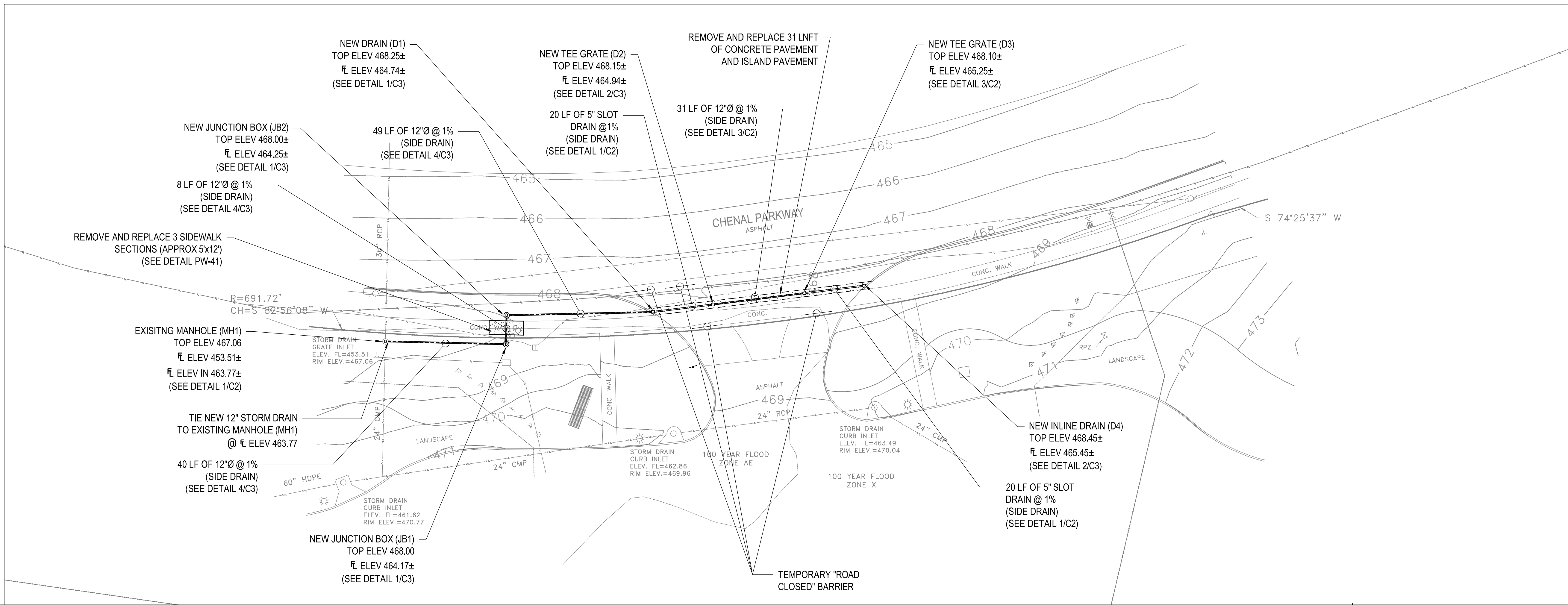
DEPARTMENT OF PUBLIC WORKS
CIVIL ENGINEERING
701 W. MARKHAM
LITTLE ROCK, ARKANSAS 72201



15% SUBMITTAL

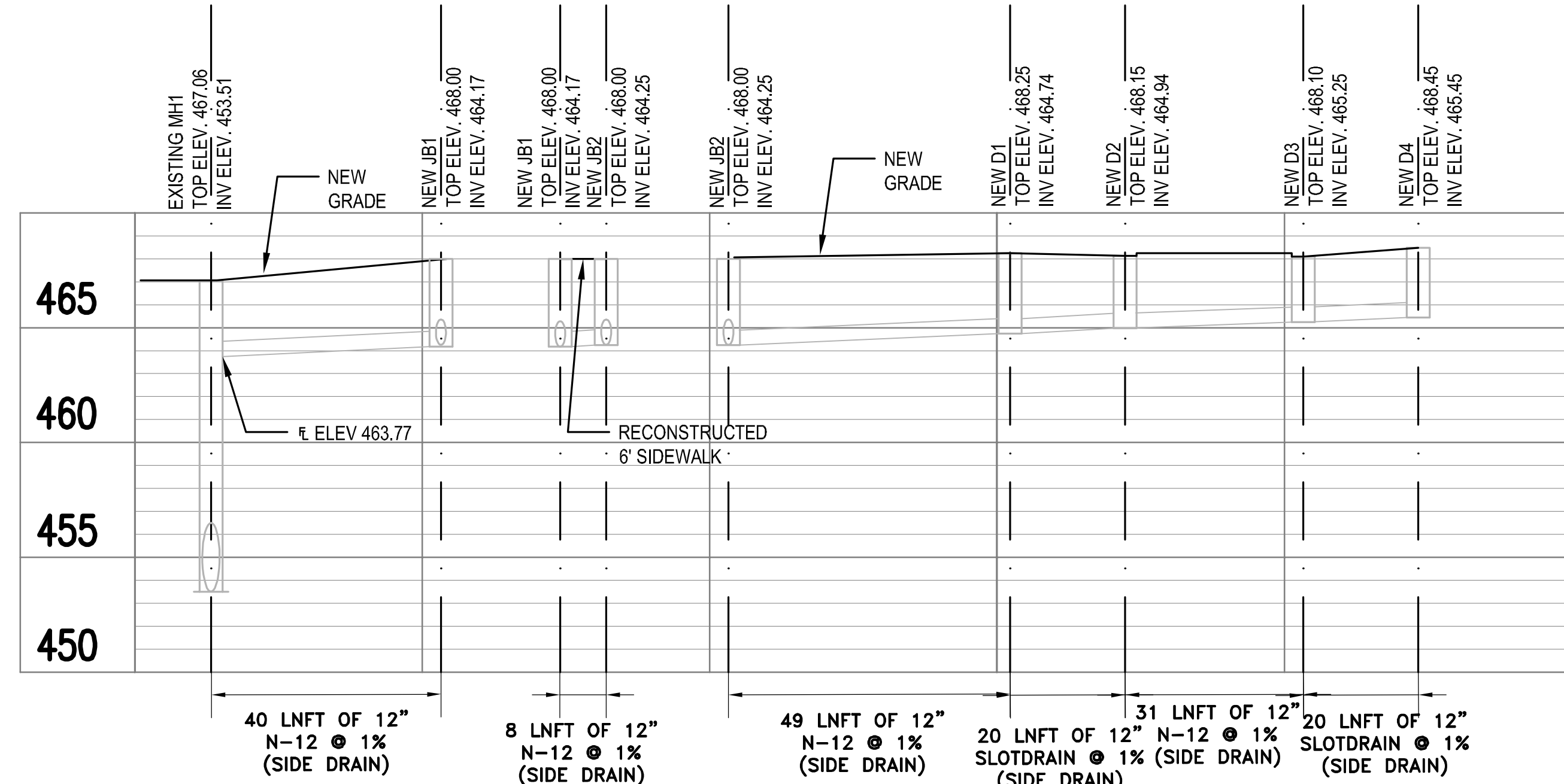
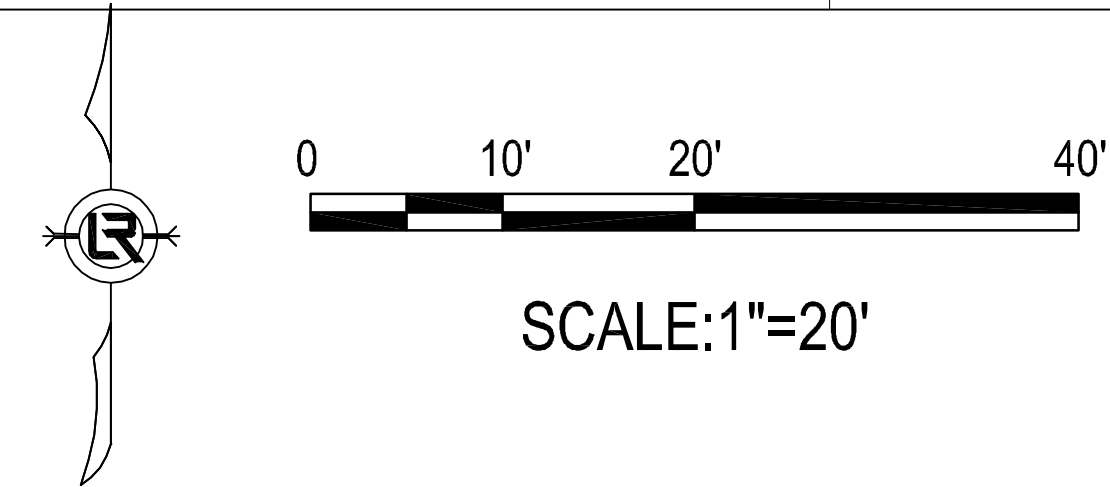
DRAWN BY
MJT
DESIGNED
MJT
CHECKED
CGW
DATE
10-18-2023
SCALE
N.T.S.
PROJECT NO.

SHEET NO.
C3

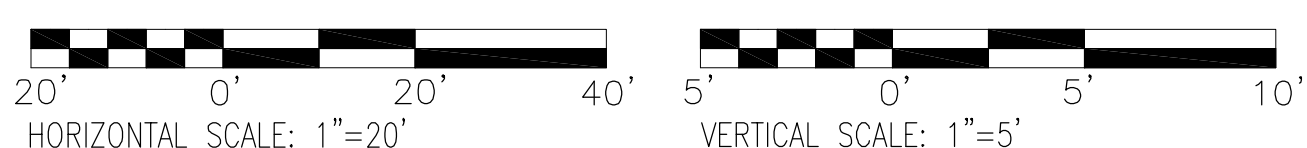


NOTE:

1. SAW CUT ALL IMPROVEMENTS AT REMOVAL LINES.



NEW STORM DRAIN PROFILE

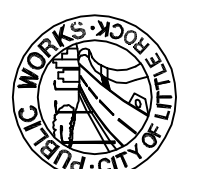


REVISIONS	DATE


CITY OF LITTLE ROCK, ARKANSAS

WARD 5 05-22-DR-37 CHENAL PARKWAY
AT FITZROY APT

PLAN AND PROFILE SHEET

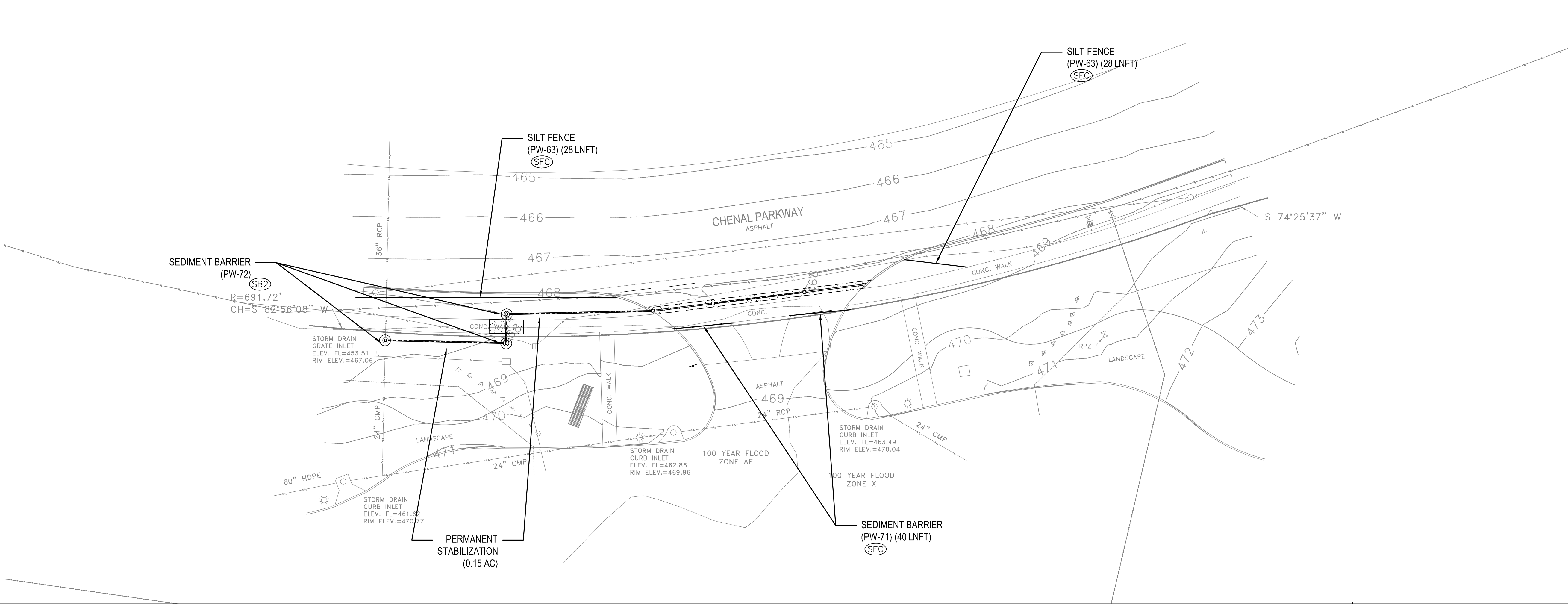


DEPARTMENT OF PUBLIC WORKS
CIVIL ENGINEERING
701 W. MARKHAM
LITTLE ROCK, ARKANSAS 72201

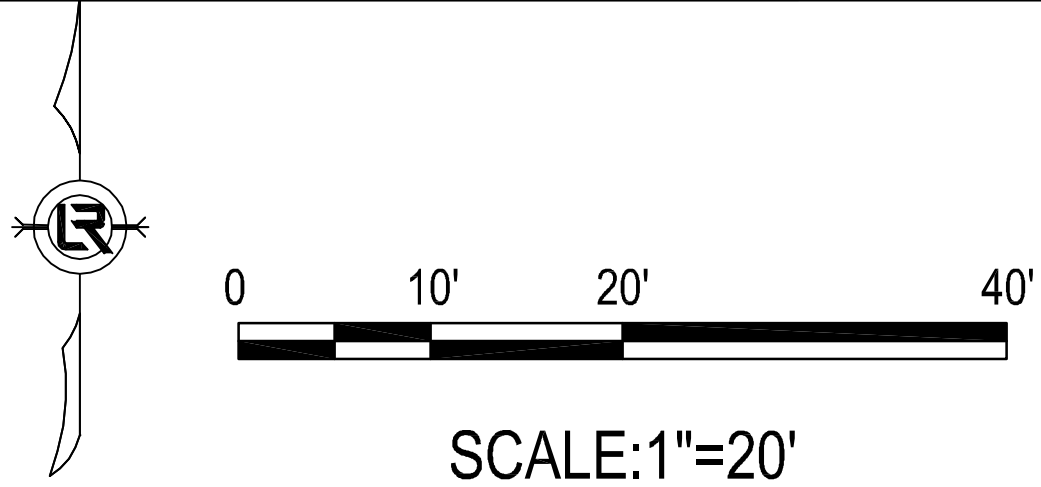


15% SUBMITTAL

DRAWN BY MJT
DESIGNED MJT
CHECKED CGW
DATE 10-18-2023
SCALE 20 SCALE
PROJECT NO. CLR #
SHEET NO. C4



- NOTE:
1. REFERENCE ARDOT STANDARD TRAFFIC CONTROLS FOR HIGHWAY CONSTRUCTION
STANDARD DRAWING TC-1 FOR NOTES AND DETAILS.
 2. USE TYPE III BARRICADE FOR "ROAD CLOSED" SIGNS.
 3. "ROAD CLOSED" - USE RII-2

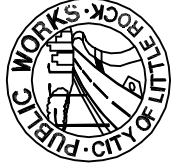



REVISIONS	DATE

CITY OF LITTLE ROCK, ARKANSAS

WARD 5 05-22-DR-37 CHENAL PARKWAY
AT FITZROY APT

EROSION CONTROL SHEET


DEPARTMENT OF PUBLIC WORKS
CIVIL ENGINEERING
701 W. MARKHAM
LITTLE ROCK, ARKANSAS 72201



15% SUBMITTAL

DRAWN BY
MJT
DESIGNED
MJT
CHECKED
CGW
DATE
10-18-2023
SCALE
20 SCALE
PROJECT NO.
CLR #
SHEET NO.
C5