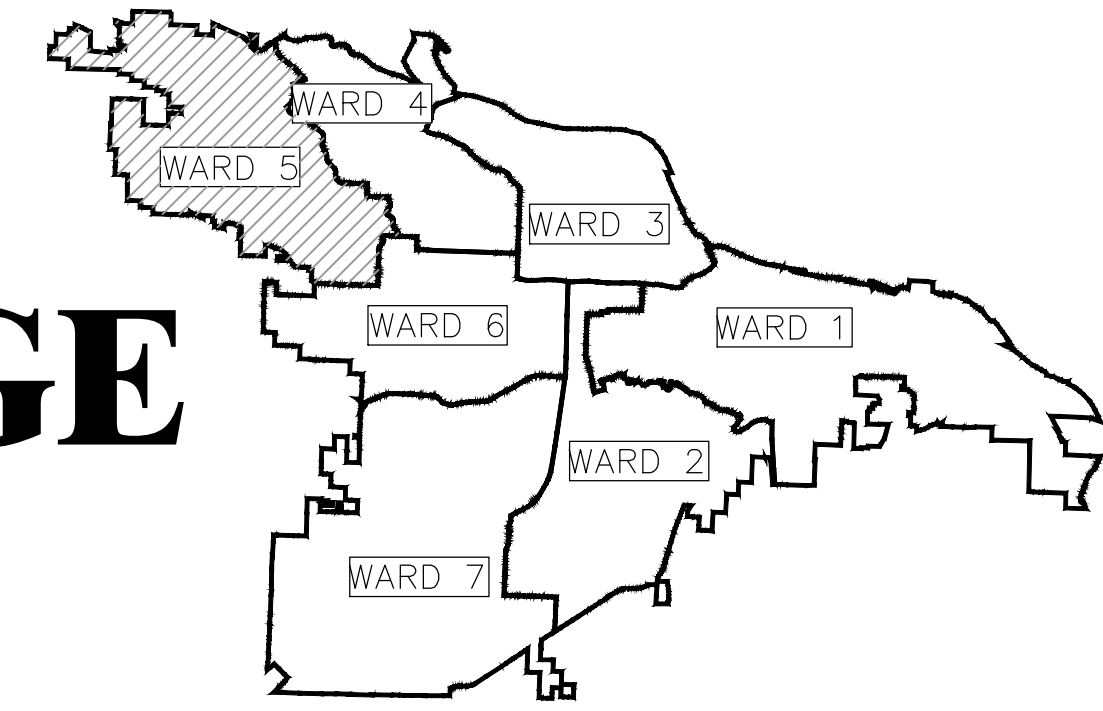
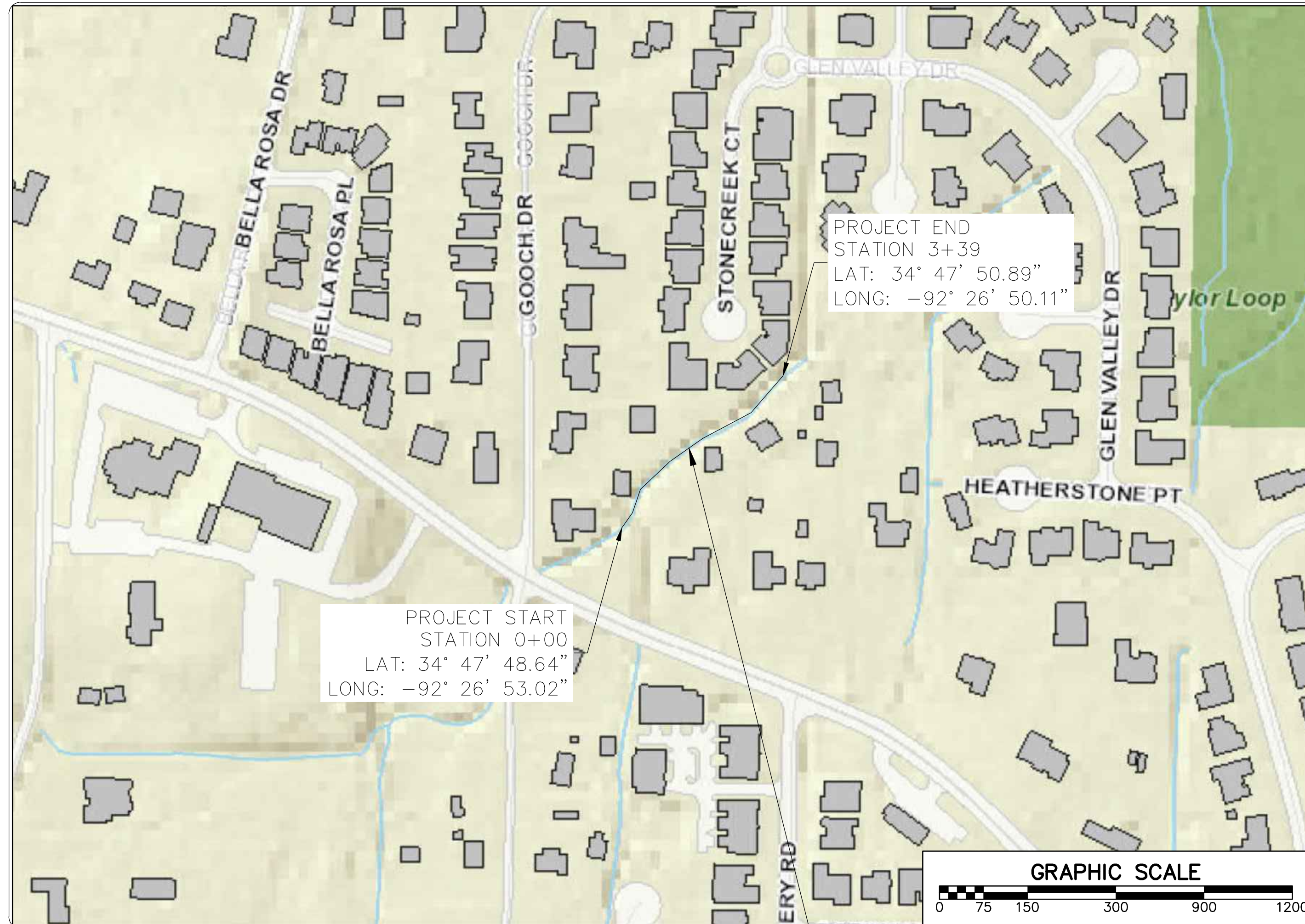
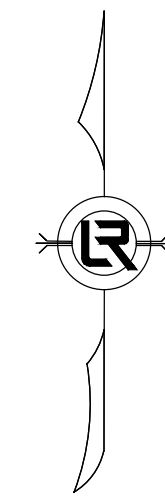


# CLR PROJECT # 05-22-DR-36 TAYLOR LOOP CREEK DRAINAGE



PROJECT LOCATION - WARD 5



PROJECT LOCATION

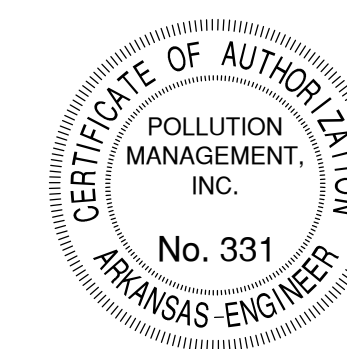
SHEET #	INDEX OF DRAWINGS
C1	COVER SHEET
C2	GENERAL NOTES AND QUANTITIES
C3	EXISTING SITE OVERVIEW
C4	EROSION CONTROL PLAN
C5	PROJECT SITE OVERVIEW
C6	PLAN AND PROFILE SHEET
C7	CROSS-SECTION PROFILE SHEET
C8	CONCRETE CHANNEL SECTIONS
C9	PROJECT DETAILS I
C10	PROJECT DETAILS II

## 100% DESIGN SUBMITTAL



### BOND PROGRAM

DEPARTMENT OF PUBLIC WORKS  
CIVIL ENGINEERING  
701 WEST MARKHAM STREET  
LITTLE ROCK, ARKANSAS 72201



3512 S. SHACKLEFORD RD.  
LITTLE ROCK, AR 72205

REVISIONS    DATE


CITY OF LITTLE ROCK, ARKANSAS  
TAYLOR LOOP CREEK DRAINAGE  
COVER SHEET

DEPARTMENT OF PUBLIC WORKS  
CIVIL ENGINEERING  
701 W. MARKHAM  
LITTLE ROCK, ARKANSAS 72201



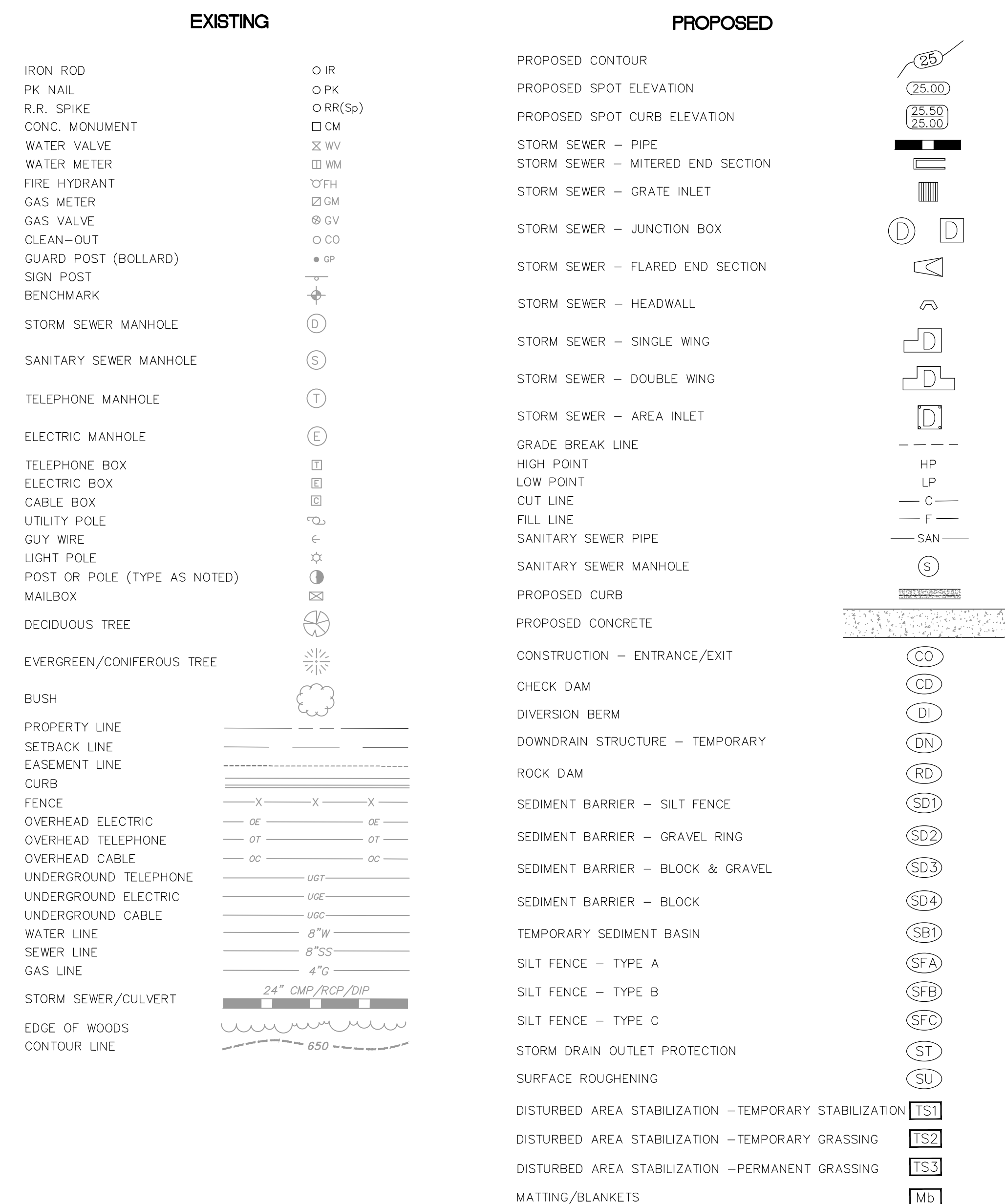
DRAWN BY  
CTG  
DESIGNED  
CTG  
CHECKED  
BJW  
DATE  
01-20-25  
SCALE  
N.T.S.  
PROJECT NO.  
CLR 05-22-DR-36  
SHEET NO.  
C1



CLR PROJECT # 05-22-DR-36			
TAYLOR LOOP CREEK DRAINAGE			
ITEM #	ITEM DESCRIPTION	UNIT	QUANTITY
2.01	SITE PREPARATION	LS	1
3.01	UNCLASSIFIED EXCAVATION	CY	830
4.01	C-BALLAST - UNDER CONCRETE DITCH	TON	200
11.40	CONCRETE DITCH PAVING (6" Thick with 6" x 6" Welded Wire Mesh)	SF	5650
14.01	SOLID SODDING, BERMUDA	SY	300
18.40	HANDRAIL (SET IN CONCRETE)	LF	585
19.01	FINAL CLEAN UP	LS	1
24.01	CONSTRUCTION ENTRANCE	EACH	1
24.12	SILT FENCE - TYPE B (SFB)	LF	660
26.10	TRENCH & EXCAVATION SAFETY	LS	1
30.00	RETAINING WALL SEGMENTED	SF	1750
SP	AS-BUILT (RECORD) DRAWINGS	LS	1

NOTES:

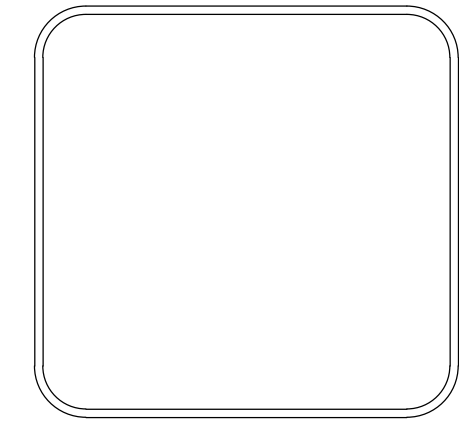
- EXCAVATION FOR CONCRETE DITCH AND SEGMENTAL RETAINING WALL SHALL BE PAID FOR PER ITEM 3.01.



REVISIONS	DATE

CITY OF LITTLE ROCK, ARKANSAS  
TAYLOR LOOP CREEK DRAINAGE  
GENERAL NOTES AND QUANTITIES

DEPARTMENT OF PUBLIC WORKS  
CIVIL ENGINEERING  
701 W. MARKHAM  
LITTLE ROCK, ARKANSAS 72201



DRAWN BY  
CTG  
DESIGNED  
CTG  
CHECKED  
BJW  
DATE  
01-20-25  
SCALE  
N.T.S.  
PROJECT NO.  
CLR 05-22-DR-36  
SHEET NO.  
C2

**100% DESIGN SUBMITTAL**

REVISIONS DATE


CITY OF LITTLE ROCK, ARKANSAS  
TAYLOR LOOP CREEK DRAINAGE

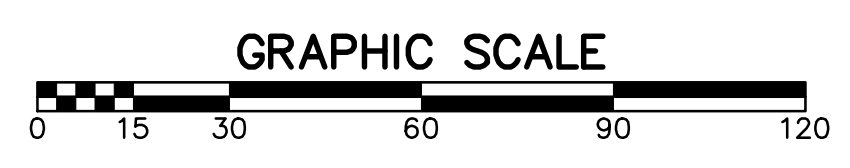
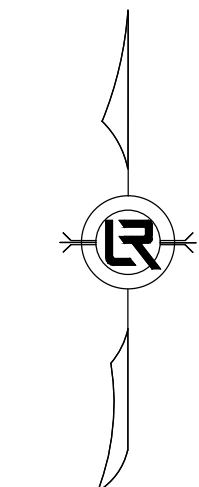
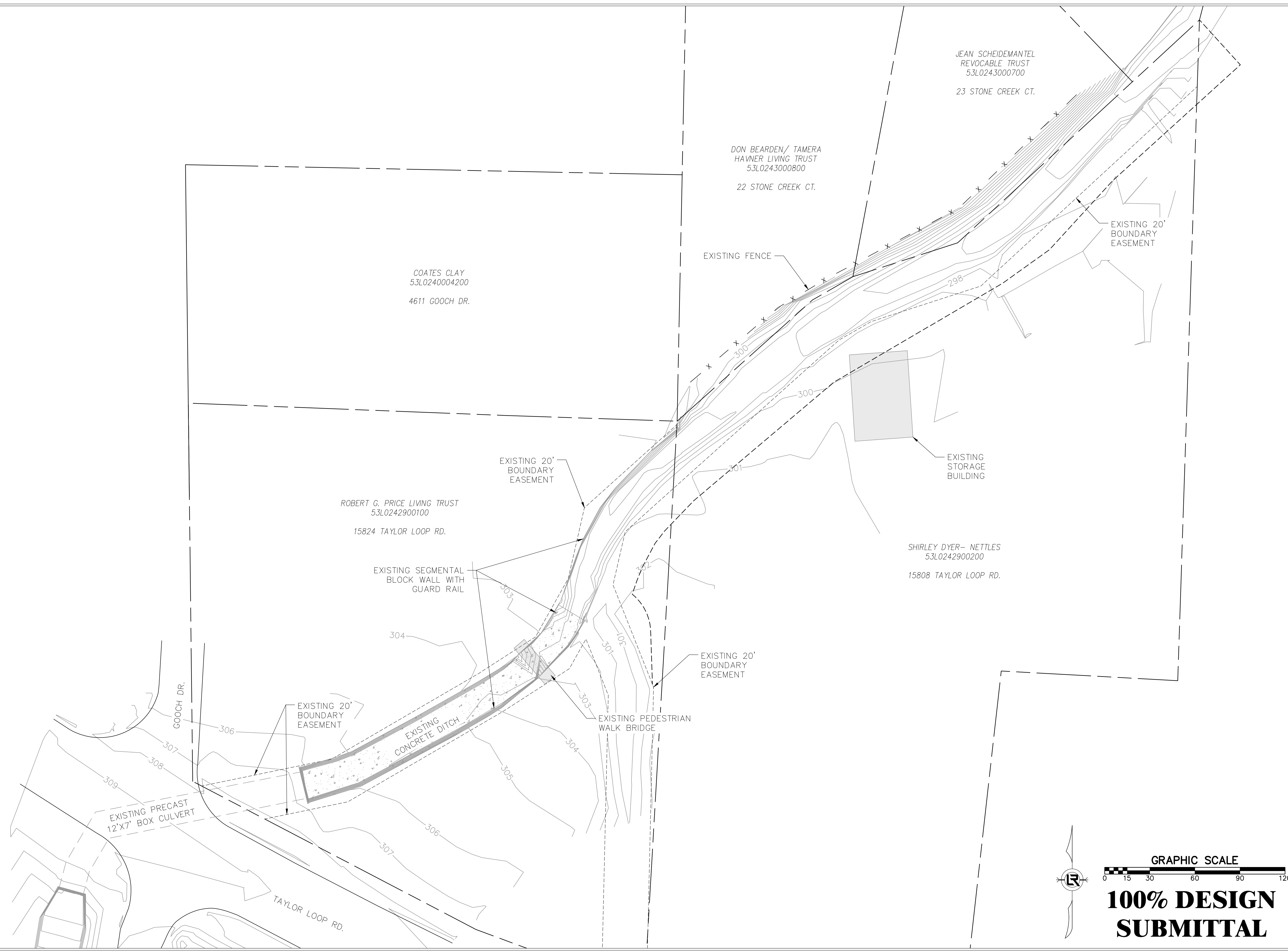
EXISTING SITE OVERVIEW

DEPARTMENT OF PUBLIC WORKS  
CIVIL ENGINEERING  
701 W. MARKHAM  
LITTLE ROCK, ARKANSAS 72201



DRAWN BY  
CTG  
DESIGNED  
CTG  
CHECKED  
BJW  
DATE  
01-20-25  
SCALE  
1" = 30'

PROJECT NO.  
CLR 05-22-DR-36  
SHEET NO.  
C3



**100% DESIGN  
SUBMITTAL**

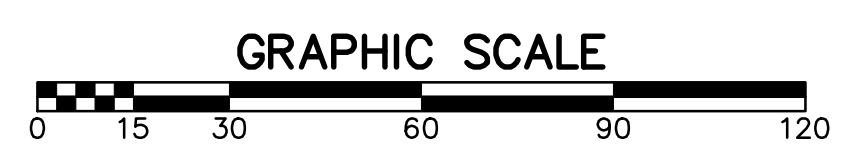
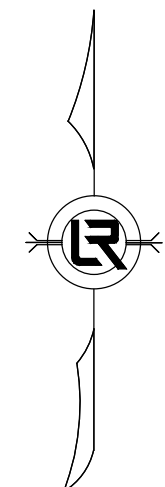
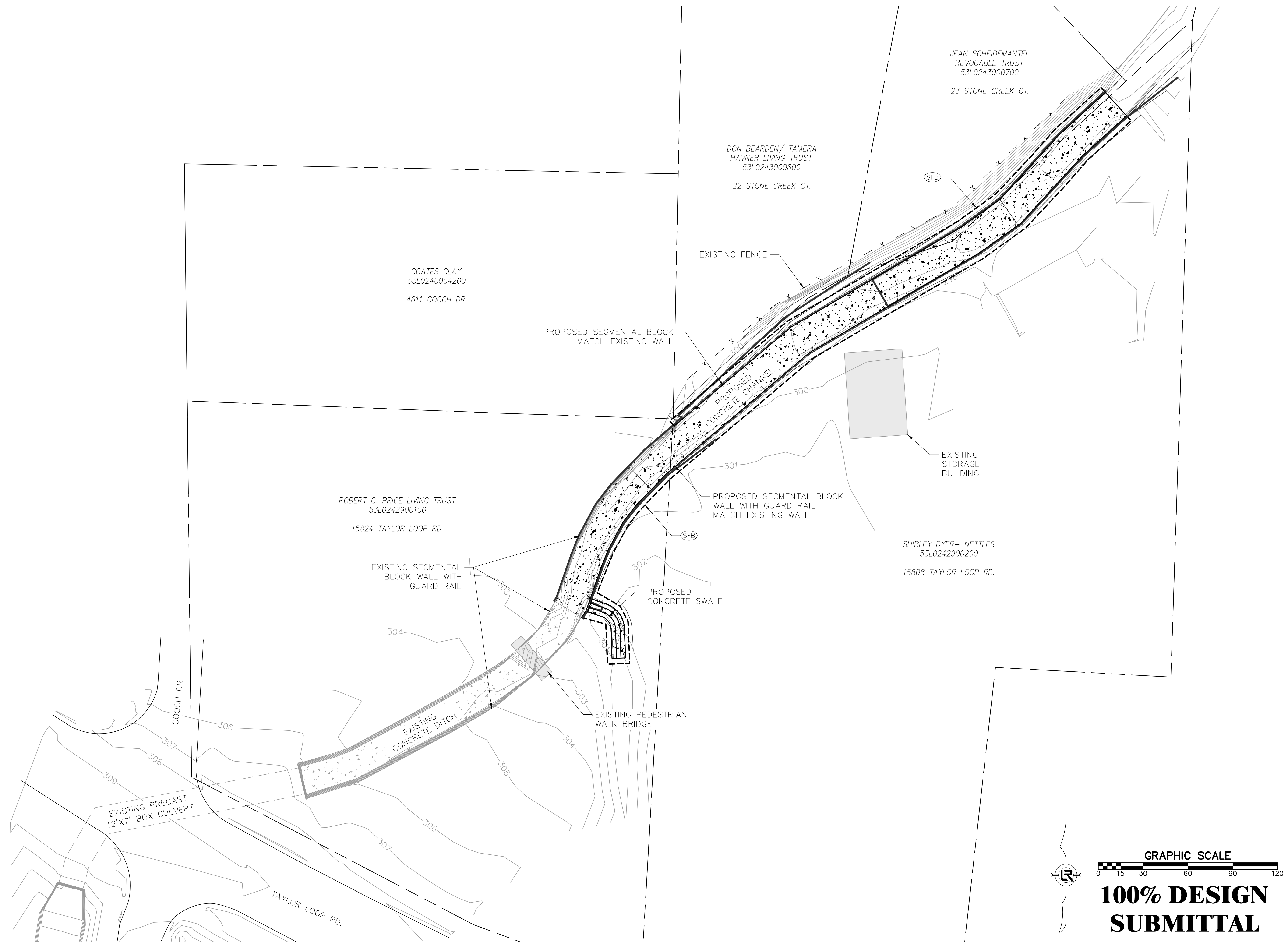
REVISIONS DATE


CITY OF LITTLE ROCK, ARKANSAS  
 TAYLOR LOOP CREEK DRAINAGE  
 EROSION CONTROL PLAN

DEPARTMENT OF PUBLIC WORKS  
 CIVIL ENGINEERING  
 701 W. MARKHAM  
 LITTLE ROCK, ARKANSAS 72201



DRAWN BY  
 CTG  
 DESIGNED  
 CTG  
 CHECKED  
 BJW  
 DATE  
 01-20-25  
 SCALE  
 1" = 30'  
 PROJECT NO.  
 CLR 05-22-DR-36  
 SHEET NO.  
 C4



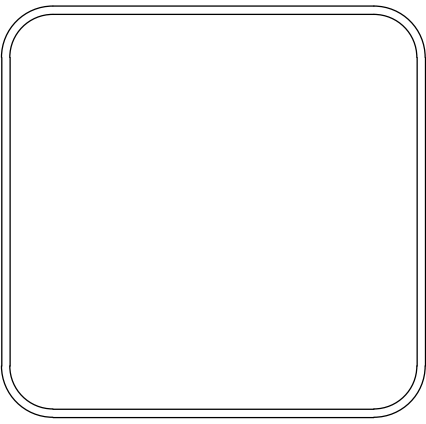
**100% DESIGN  
 SUBMITTAL**



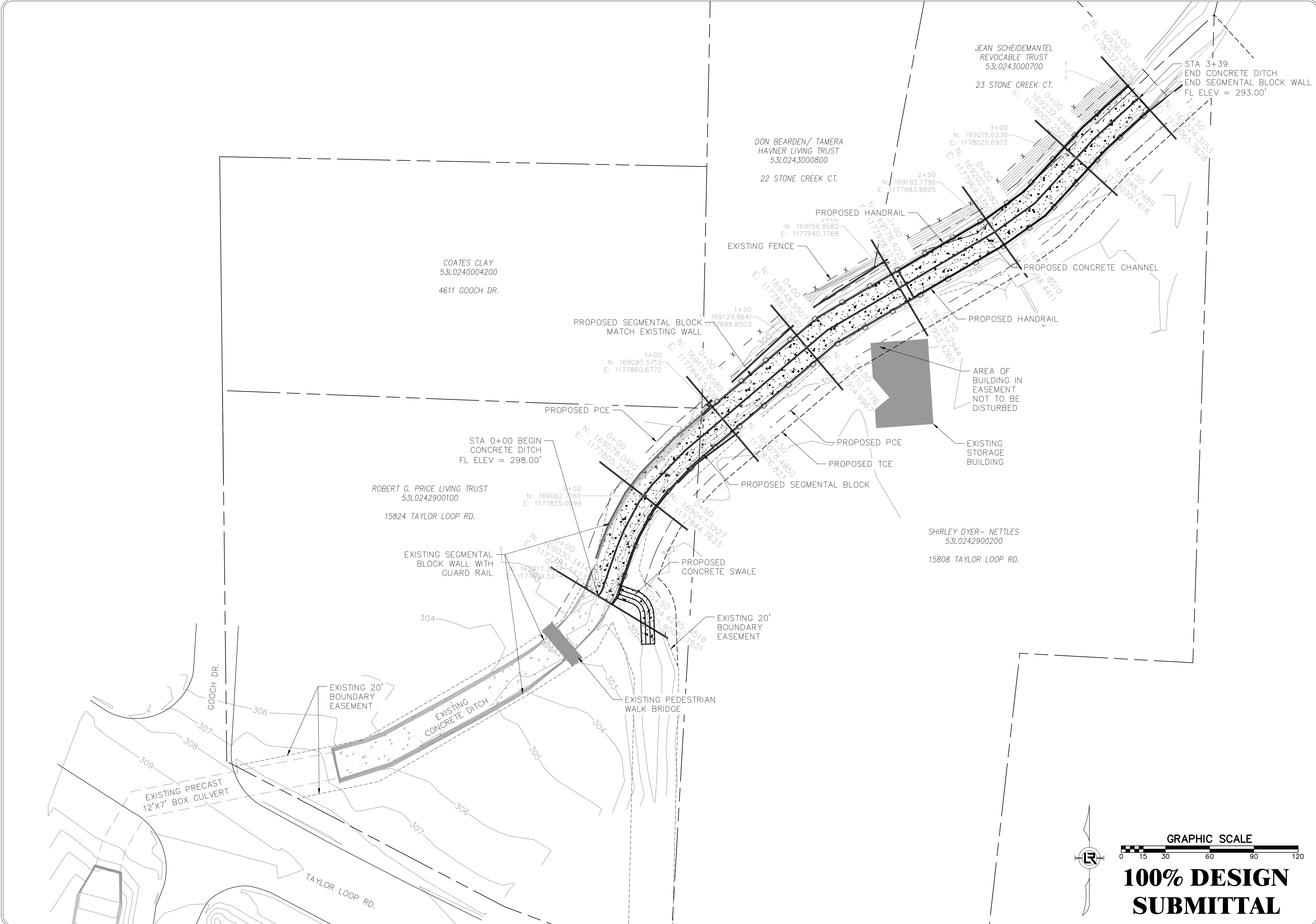
REVISIONS	DATE

CITY OF LITTLE ROCK, ARKANSAS  
TAYLOR LOOP CREEK DRAINAGE  
PROJECT SITE OVERVIEW

DEPARTMENT OF PUBLIC WORKS  
CIVIL ENGINEERING  
701 W. MARKHAM  
LITTLE ROCK, ARKANSAS 72201

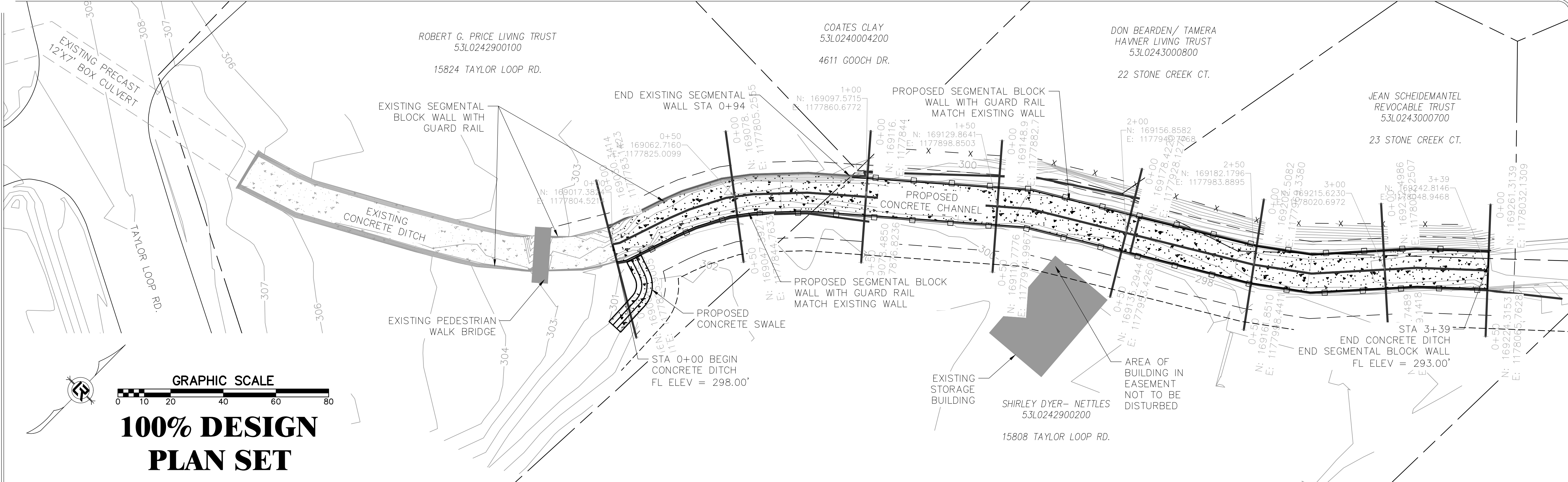


DRAWN BY  
**CTG**  
DESIGNED  
**CTG**  
CHECKED  
**BJW**  
DATE  
**01-20-25**  
SCALE  
**1" = 30'**  
PROJECT NO.  
**CLR 05-22-DR-36**  
SHEET NO.  
**C5**



GRAPHIC SCALE  
0 15 30 60 90 120

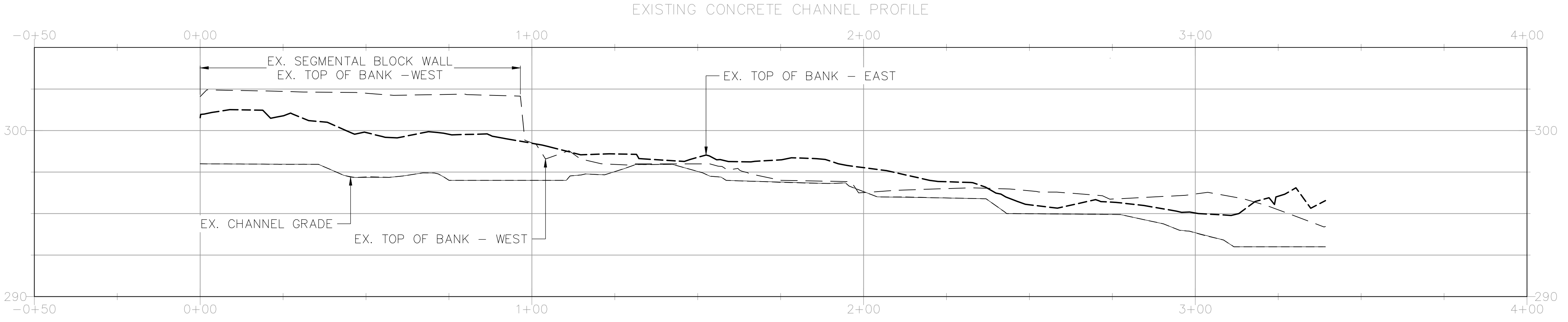
**100% DESIGN SUBMITTAL**



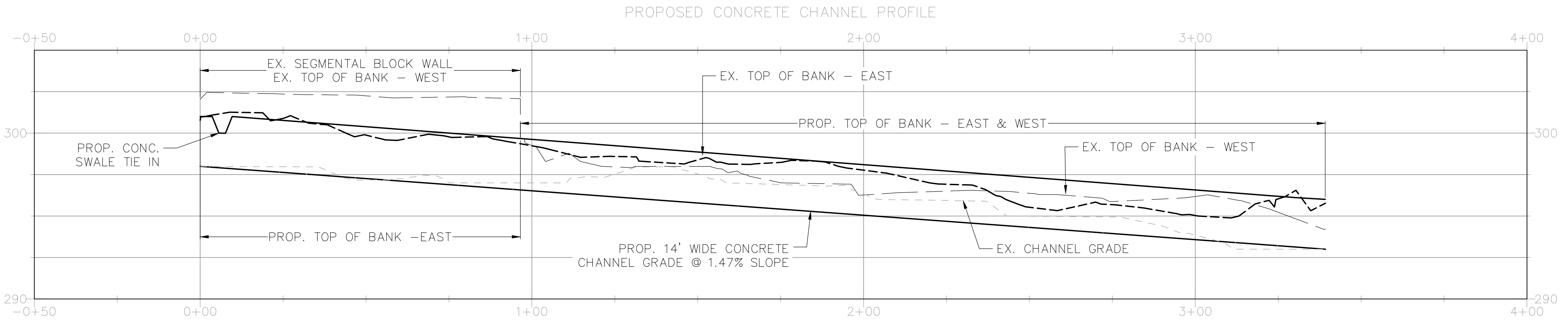
GRAPHIC SCALE  
 0 10 20 40 60 80  
**100% DESIGN  
 PLAN SET**

NOTE:  
 TOP OF BANK LOCATIONS ARE 7' EITHER SIDE  
 OF THE PROPOSED CHANNEL'S CENTERLINE.

PROPOSED GRADE ELEVATIONS			
STATION	TOB - WEST	TOB - EAST	CHANNEL
0+00	302.04'	300.77'	298.00'
0+50	302.24'	299.88'	297.20'
1+00	299.26'	299.23'	297.00'
1+50	297.99'	298.38'	297.54'
2+00	296.26'	297.76'	296.32'
2+50	296.37'	295.53'	294.99'
3+00	296.18'	295.03'	293.84'
3+39	294.22'	295.77'	293.00'



PROPOSED GRADE ELEVATIONS			
STATION	TOB - WEST	TOB - EAST	CHANNEL
0+00	302.04'	301.00'	298.00'
0+50	302.24'	300.26'	297.26'
1+00	299.61'	299.61'	296.61'
1+50	298.79'	298.79'	295.79'
2+00	298.05'	298.05'	295.05'
2+50	297.31'	297.31'	294.31'
3+00	296.58'	296.58'	293.58'
3+39	296.00'	296.00'	293.00'



REVISIONS	DATE

CITY OF LITTLE ROCK, ARKANSAS  
 TAYLOR LOOP CREEK DRAINAGE  
 PLAN AND PROFILE SHEET

DEPARTMENT OF PUBLIC WORKS  
 CIVIL ENGINEERING  
 701 W. MARKHAM  
 LITTLE ROCK, ARKANSAS 72201

DRAWN BY  
 CTG  
 DESIGNED  
 CTG  
 CHECKED  
 BJW  
 DATE  
 01-20-25  
 SCALE  
 1" = 10'  
 PROJECT NO.  
 CLR 05-22-DR-36  
 SHEET NO.  
 C6

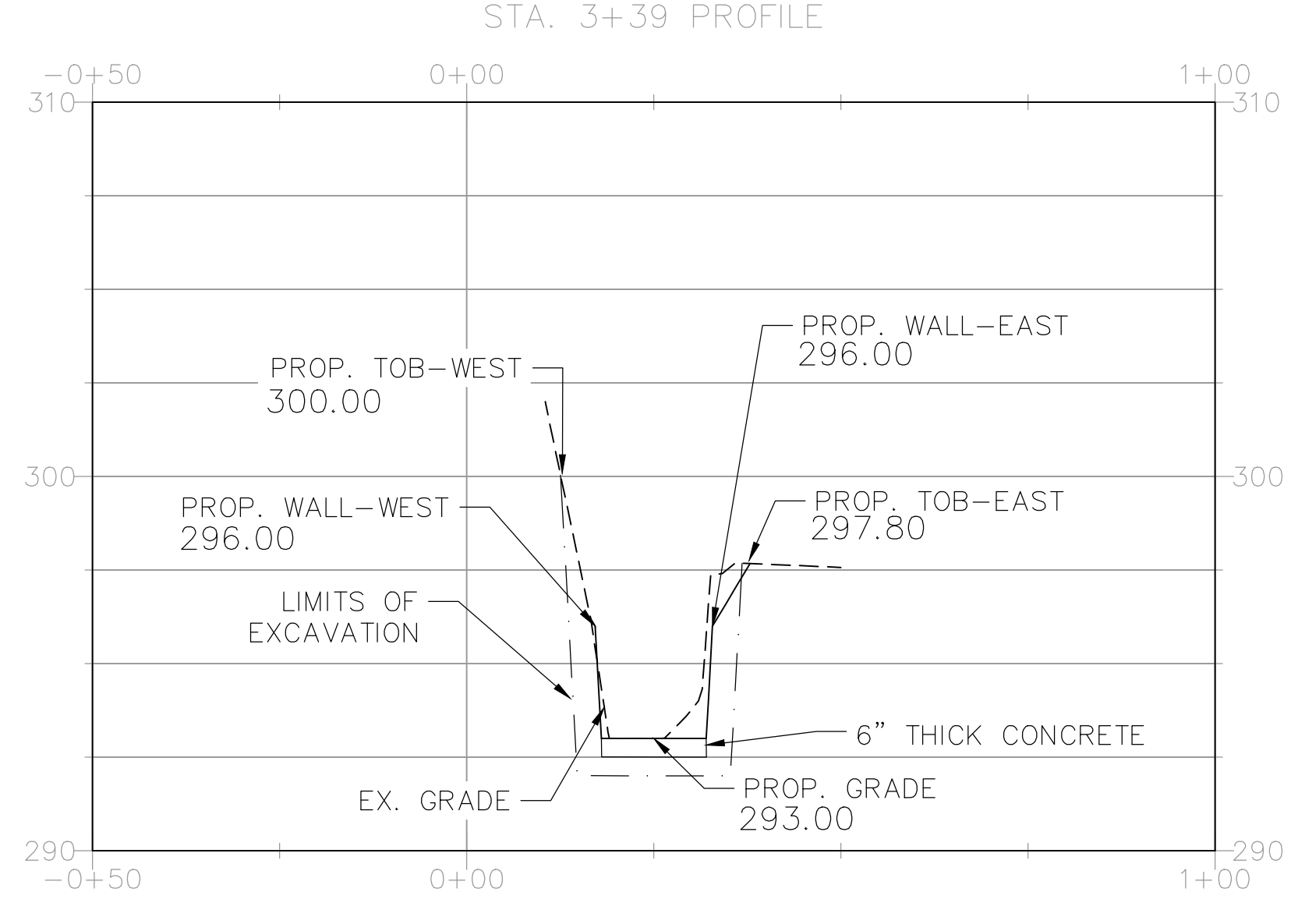
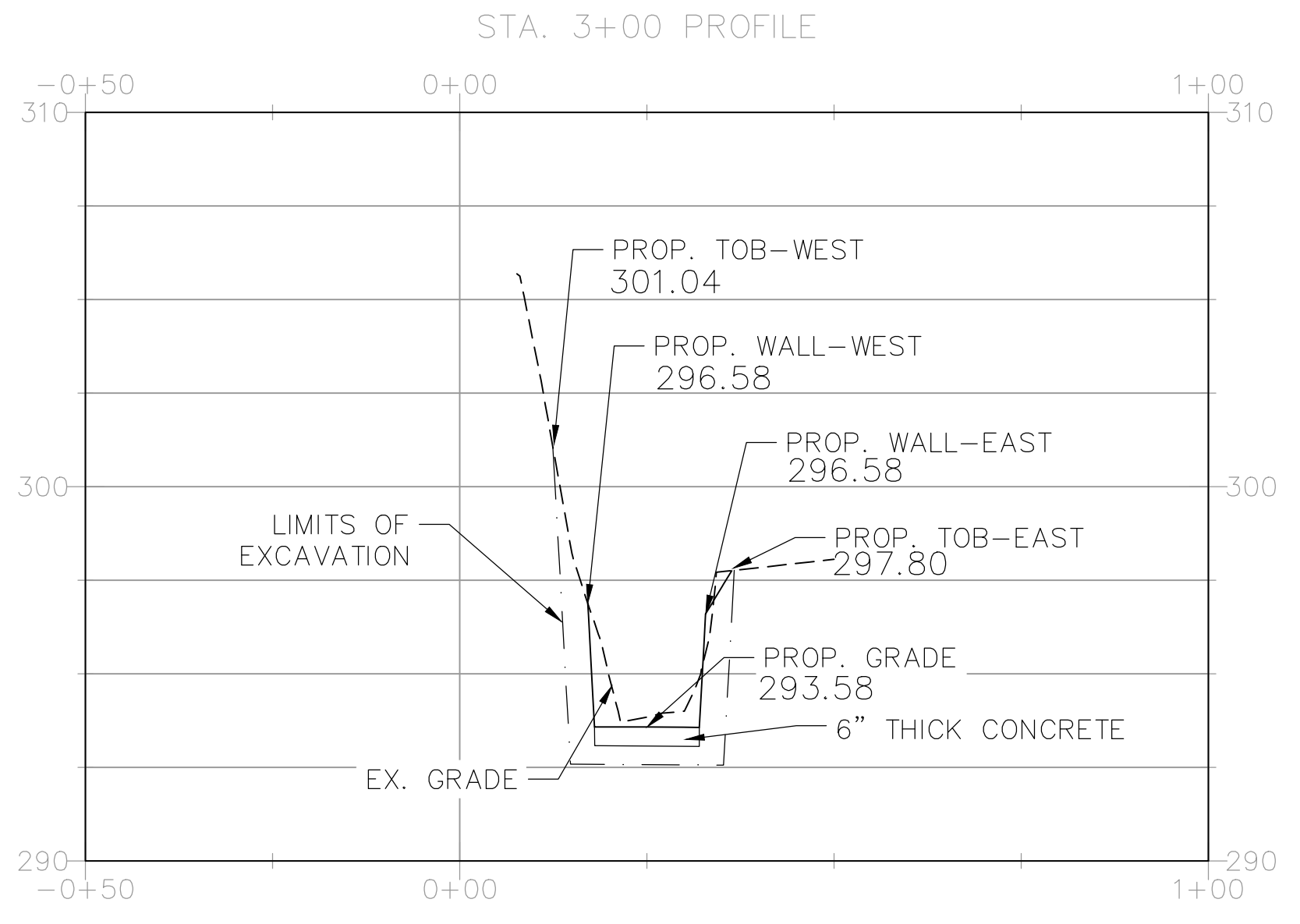
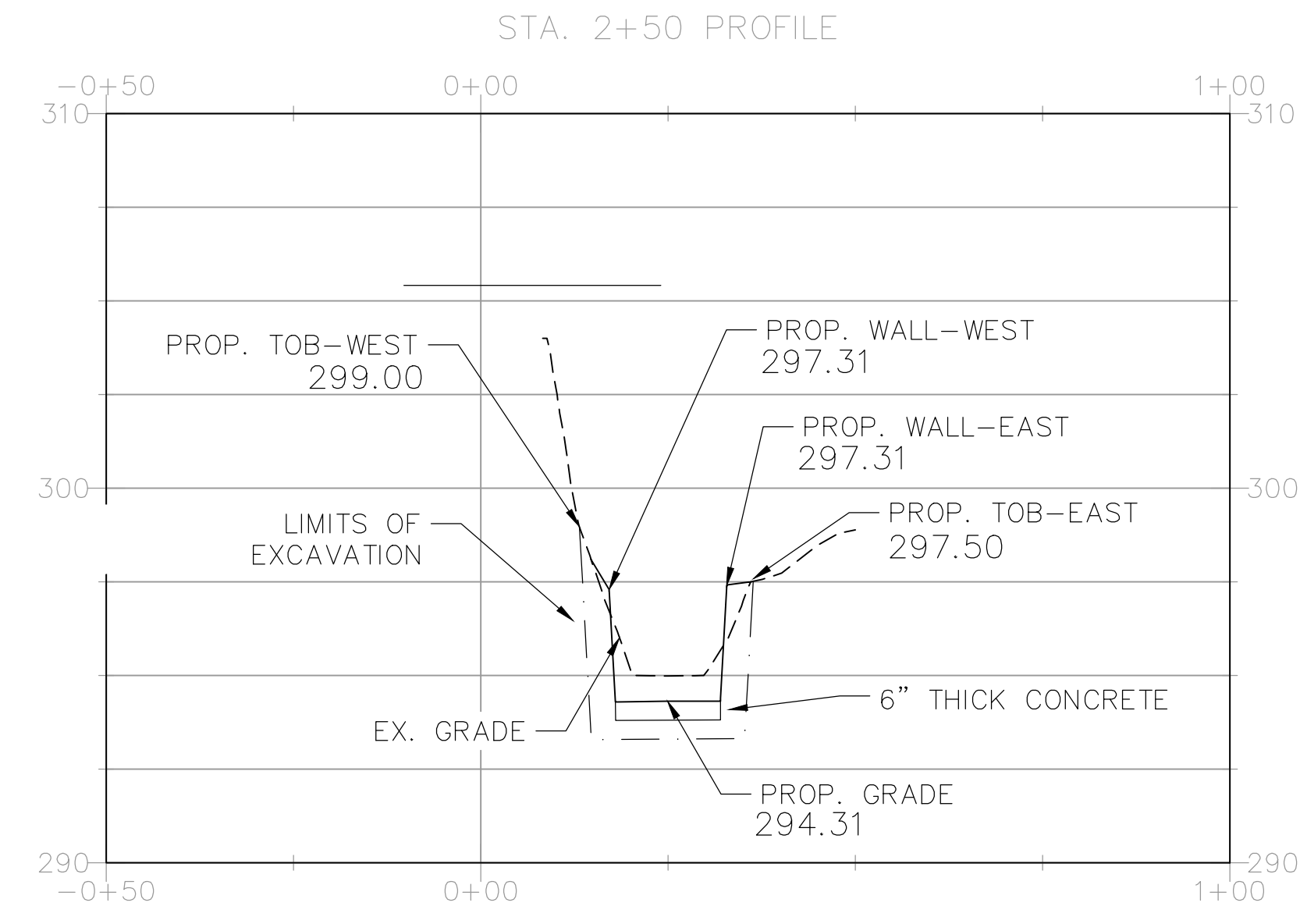
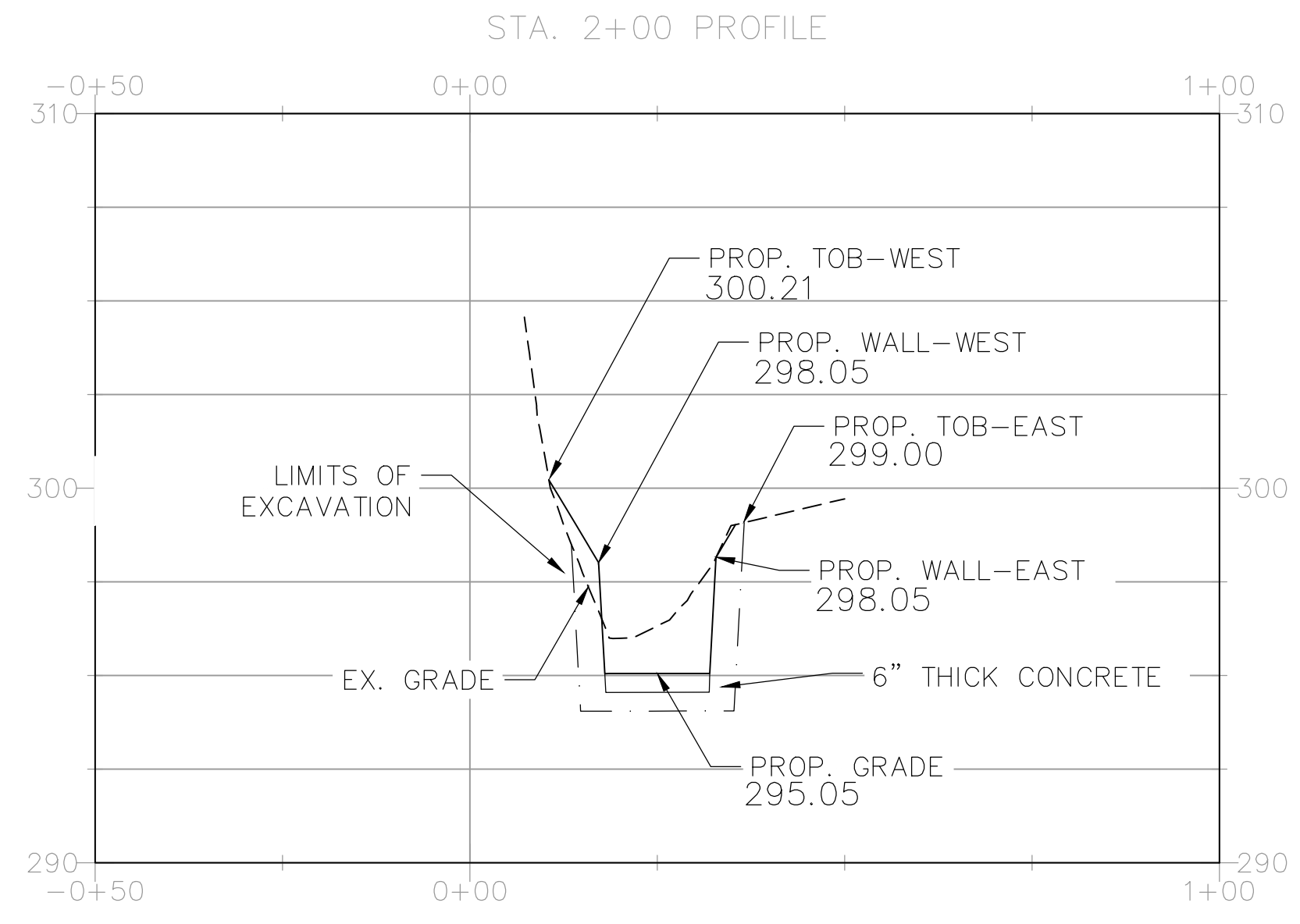
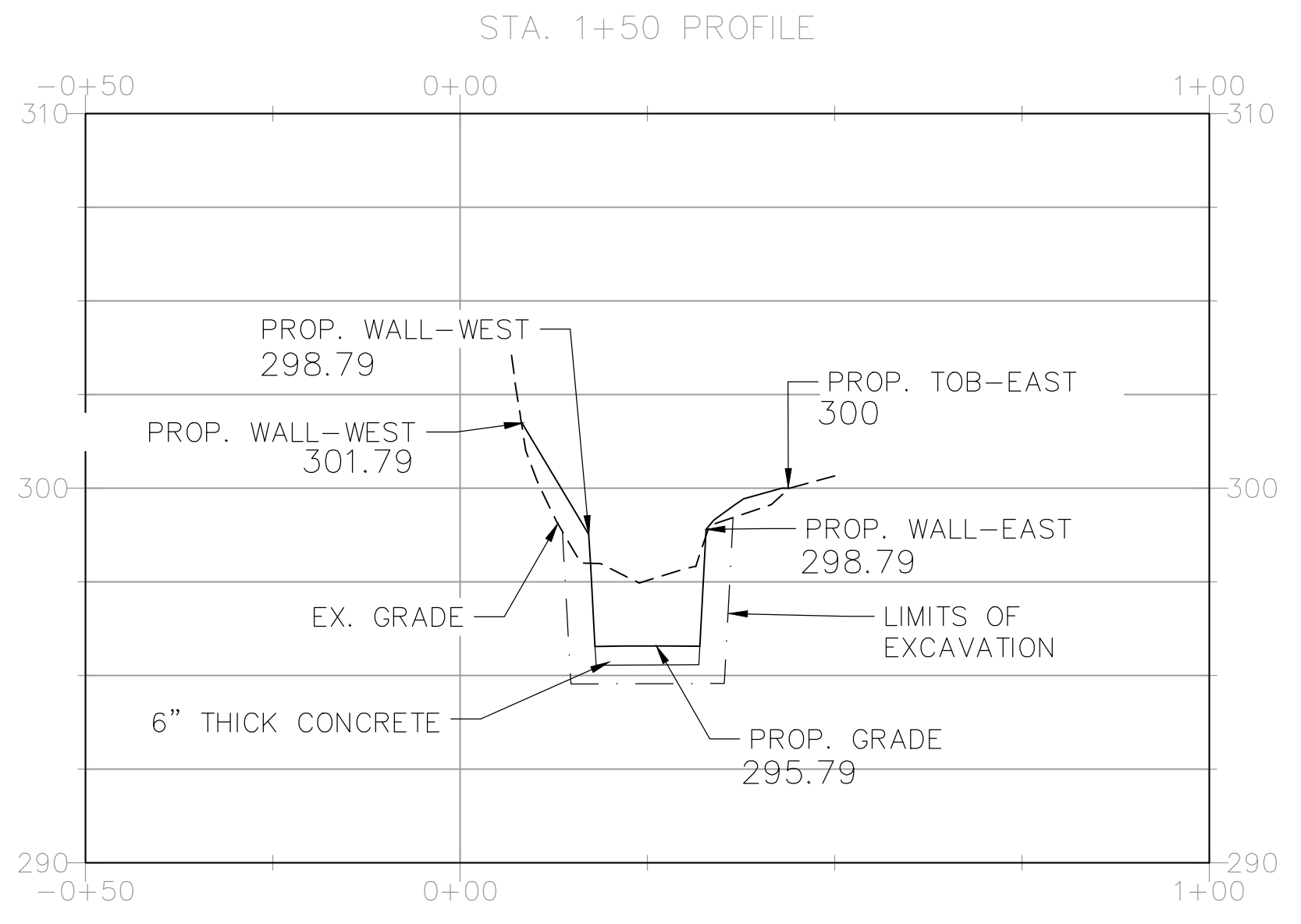
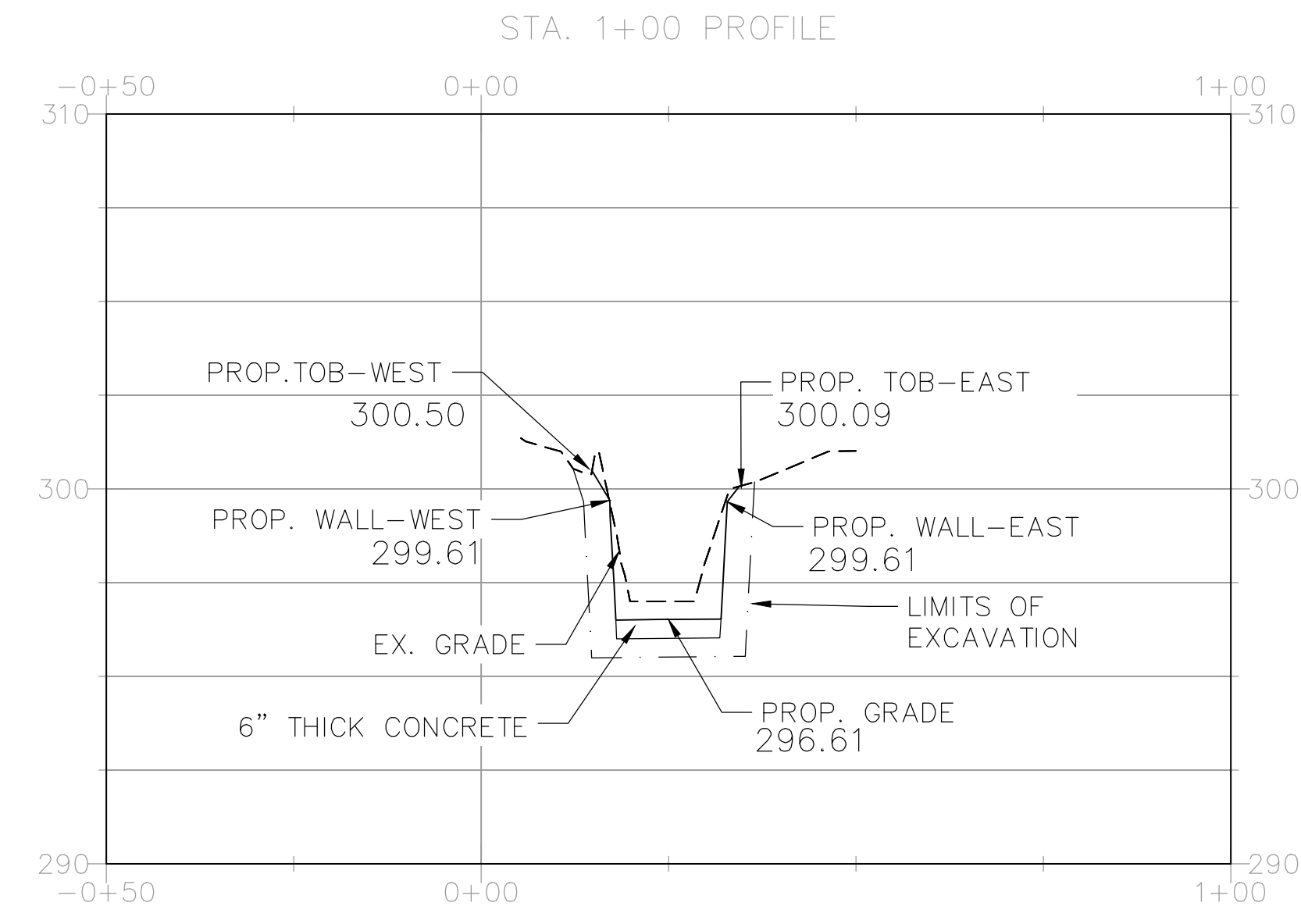
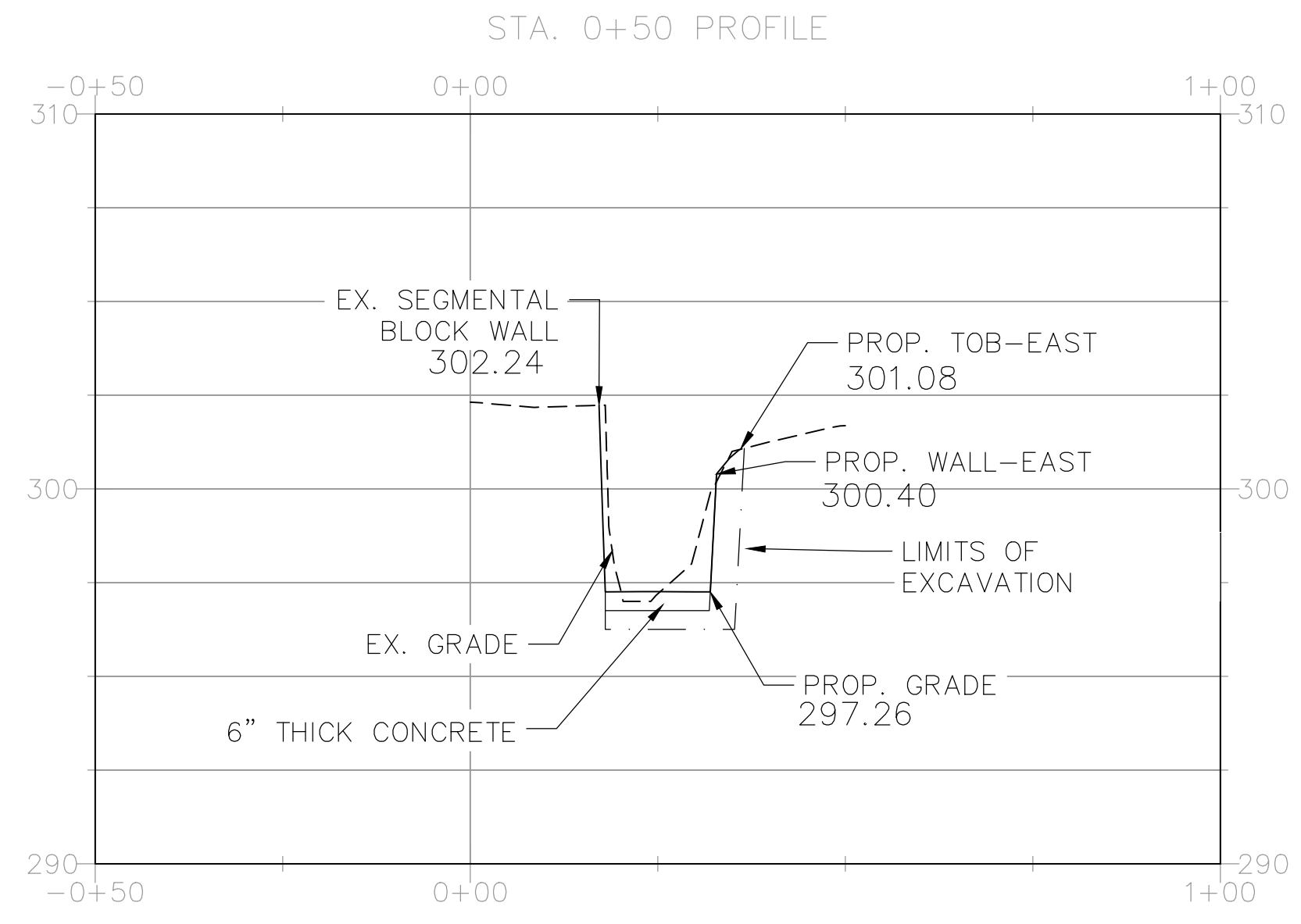
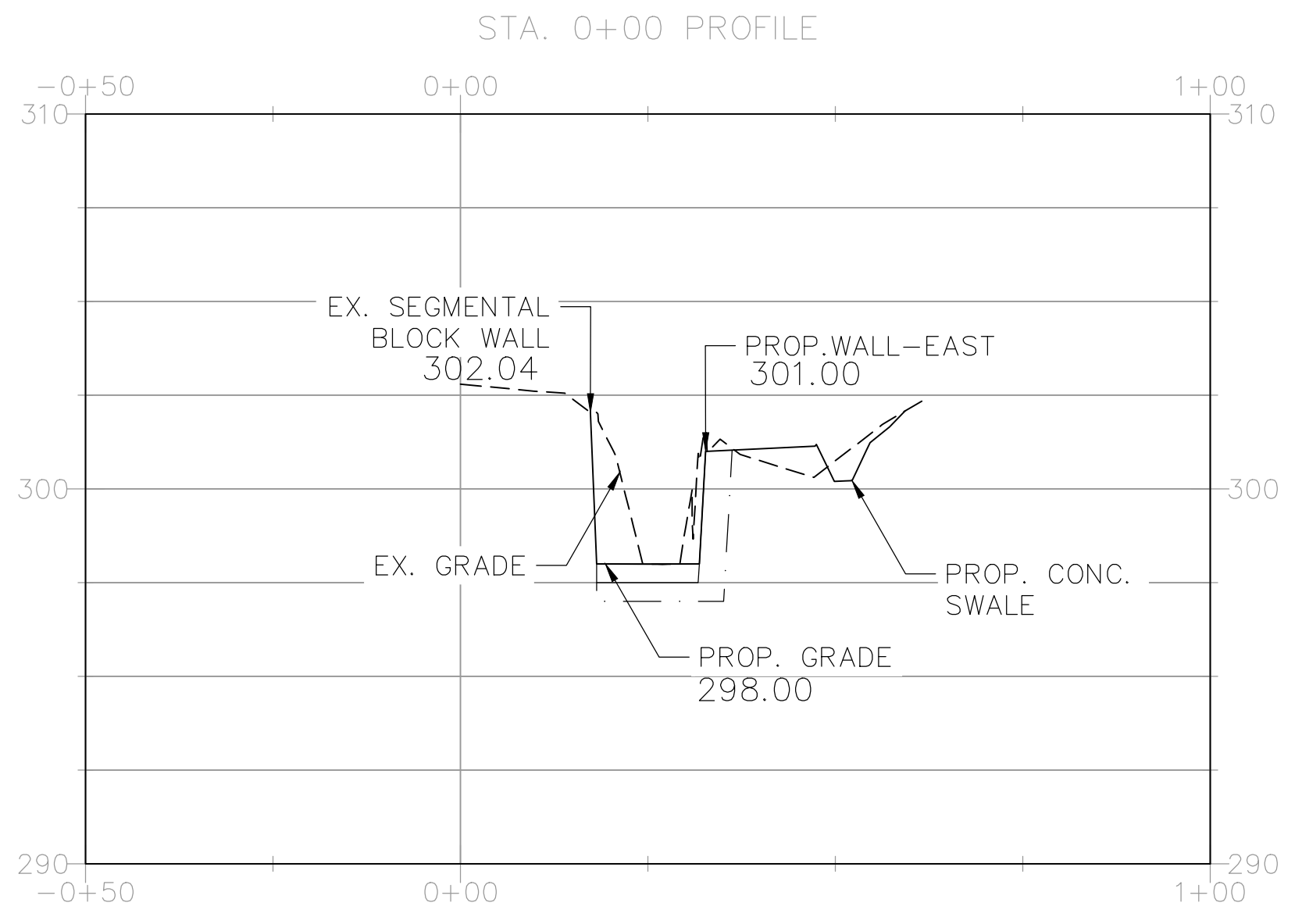
REVISIONS	DATE

CITY OF LITTLE ROCK, ARKANSAS  
TAYLOR LOOP CREEK DRAINAGE  
CROSS-SECTION PROFILE SHEET

DEPARTMENT OF PUBLIC WORKS  
CIVIL ENGINEERING  
701 W. MARKHAM  
LITTLE ROCK, ARKANSAS 72201



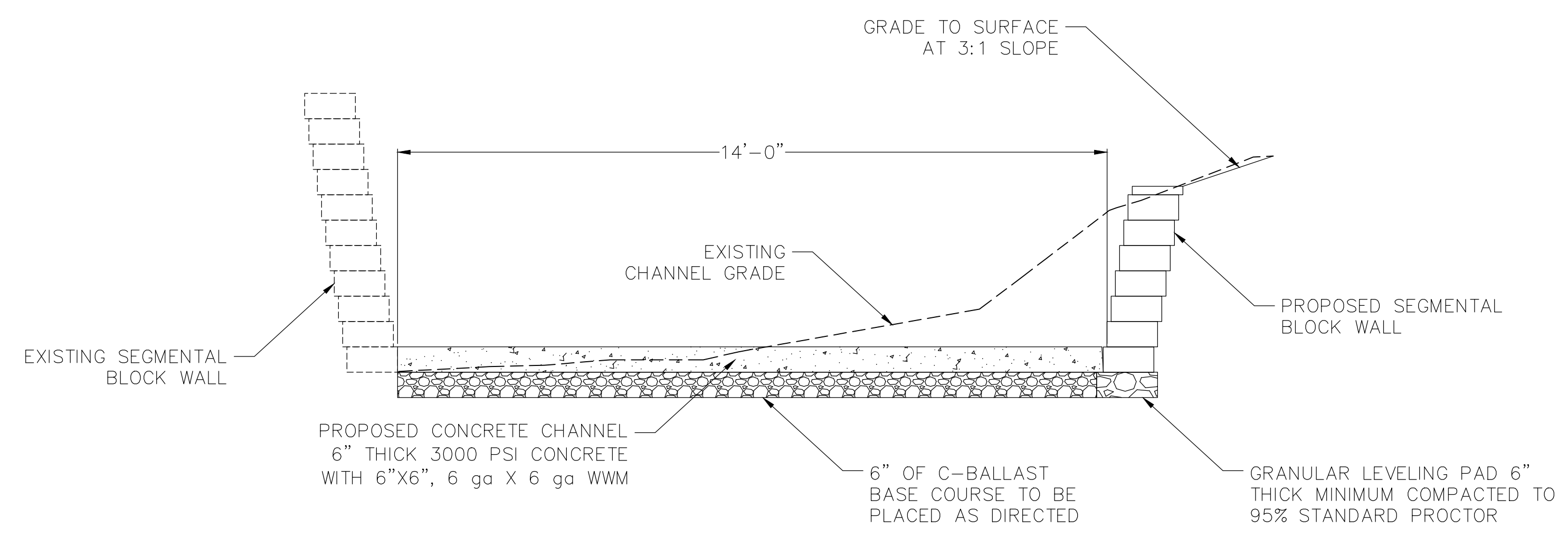
**DRAWN BY**  
CTG  
**DESIGNED**  
CTG  
**CHECKED**  
BJW  
**DATE**  
01-20-25  
**SCALE**  
AS NOTED  
**PROJECT NO.**  
CLR 05-22-DR-36  
**SHEET NO.**  
C7



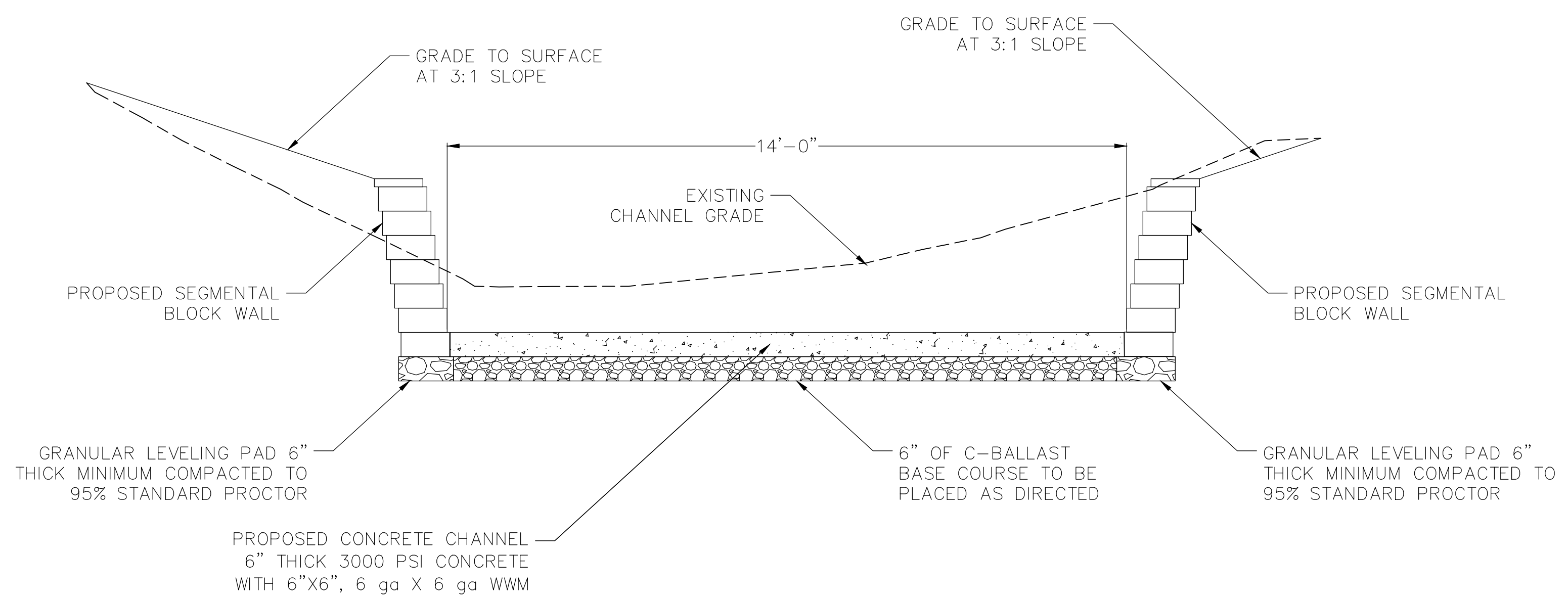
**NOTE:**  
CONTRACTOR TO TIE INTO EXISTING SURFACE  
OUTSIDE OF PROPOSED SEGMENTAL BLOCK  
WALL AT A MAXIMUM SLOPE OF 3:1.

**100% DESIGN  
SUBMITTAL**

REVISIONS	DATE



SECTION AT STA. 0+00 TO 0+94  
NTS



SECTION AT STA. 2+00  
NTS

CITY OF LITTLE ROCK, ARKANSAS  
TAYLOR LOOP CREEK DRAINAGE  
CONCRETE CHANNEL SECTIONS

DEPARTMENT OF PUBLIC WORKS  
CIVIL ENGINEERING  
701 W. MARKHAM  
LITTLE ROCK, ARKANSAS 72201



DRAWN BY CTG
DESIGNED CTG
CHECKED BJW
DATE 01-20-25
SCALE NTS
PROJECT NO. CLR 05-22-DR-36
SHEET NO. C8

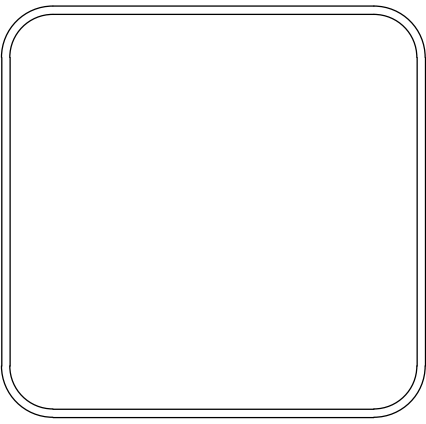
**100% DESIGN  
SUBMITTAL**



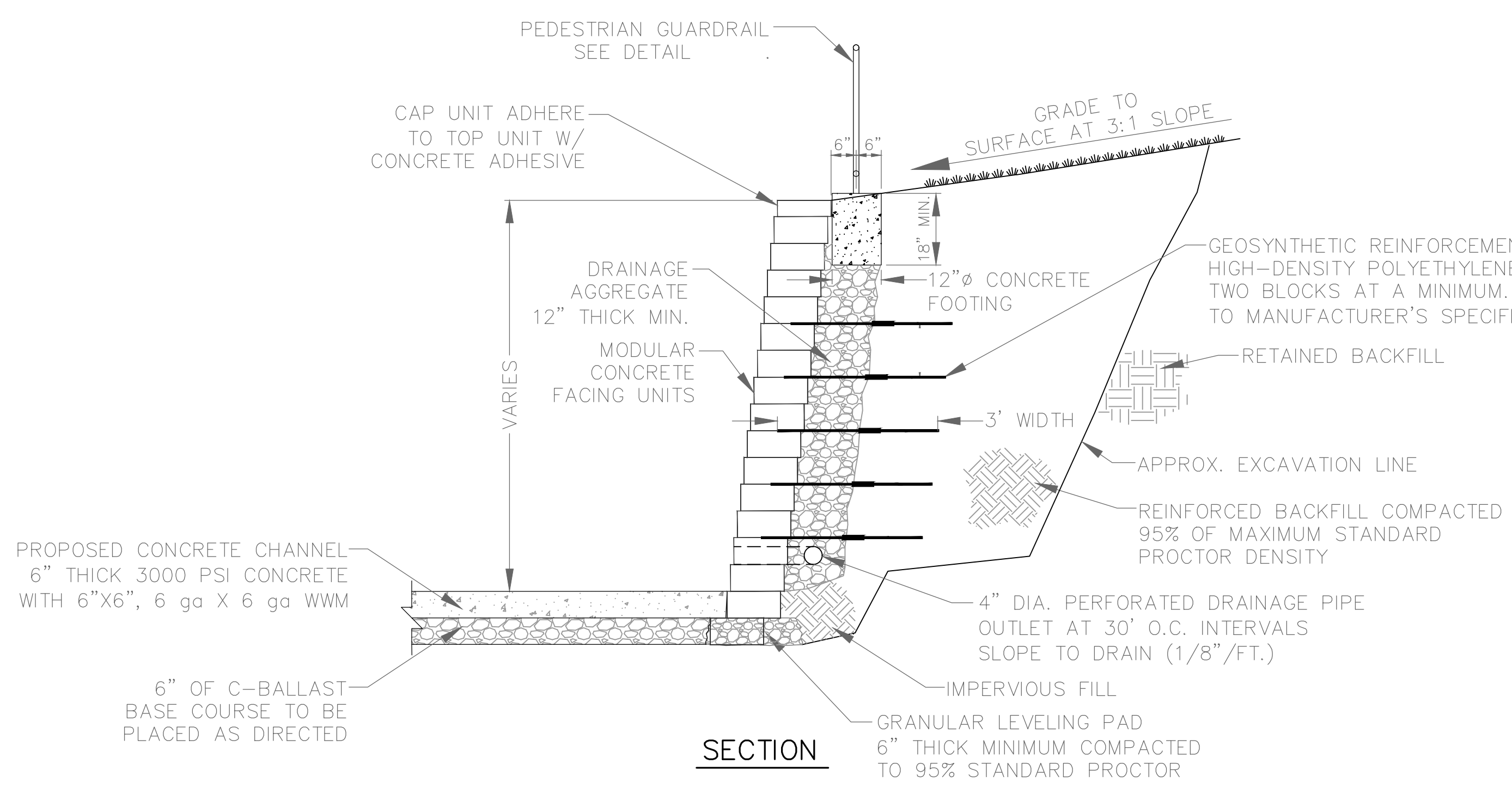
REVISIONS	DATE

CITY OF LITTLE ROCK, ARKANSAS  
TAYLOR LOOP CREEK DRAINAGE  
PROJECT DETAILS I

DEPARTMENT OF PUBLIC WORKS  
CIVIL ENGINEERING  
701 W. MARKHAM  
LITTLE ROCK, ARKANSAS 72201



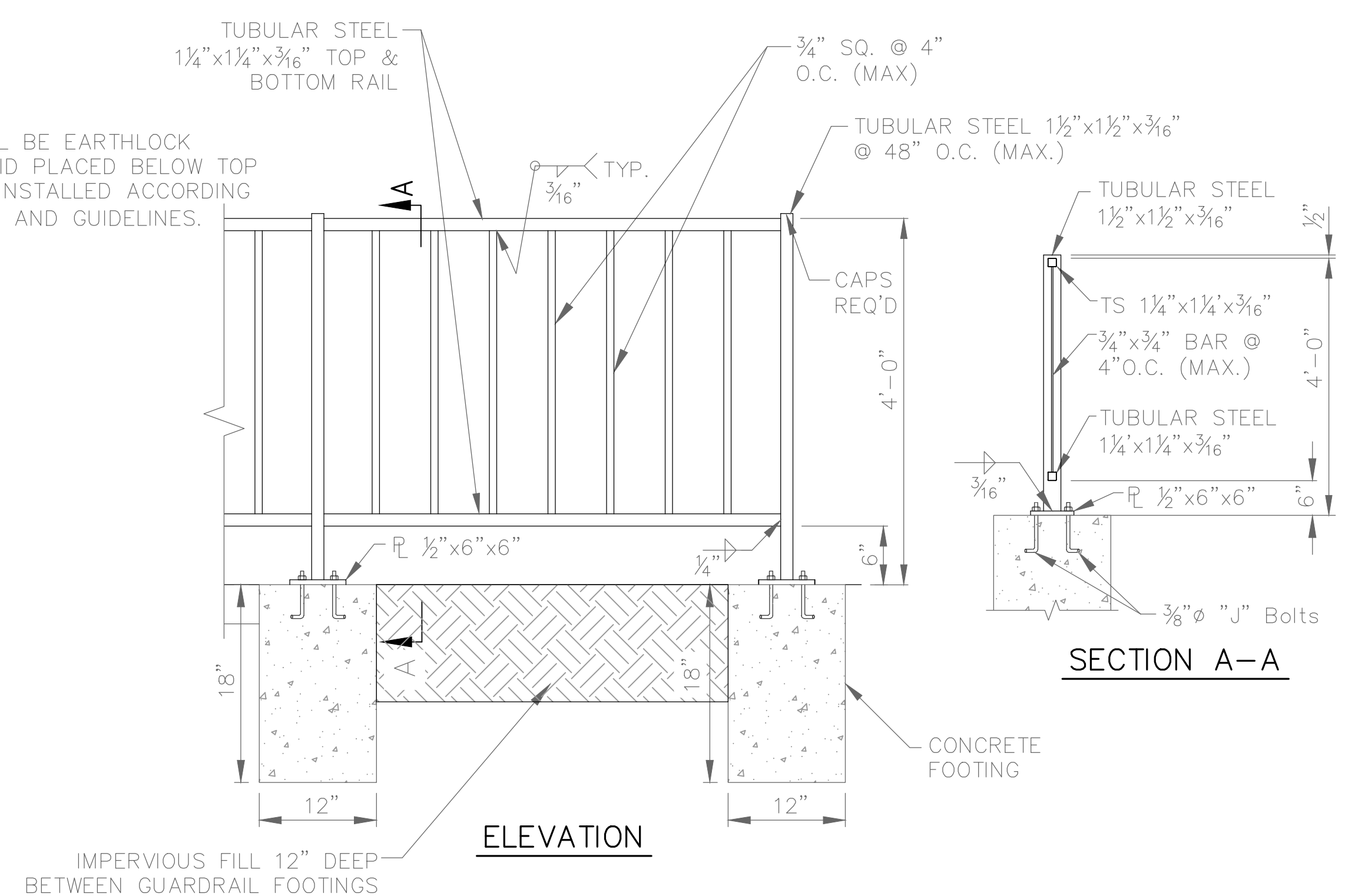
DRAWN BY  
CTG  
DESIGNED  
CTG  
CHECKED  
BJW  
DATE  
01-20-25  
SCALE  
NTS  
PROJECT NO.  
CLR 05-22-DR-36  
SHEET NO.  
C9



8" Modular block wall to be approved by the City of Little Rock. Match existing wall type.

TYP. SECTION - SEGMENTAL BLOCK WALL WITH GUARDRAIL  
NTS

ALL ITEMS SHOW FOR SEGMENTAL WALL SHALL BE PAID PER SQUARE FOOT OF WALL INCLUDING GEOSYNTHETIC FABRIC, DRAINAGE AGGREGATE & 4" DRAINAGE PIPE

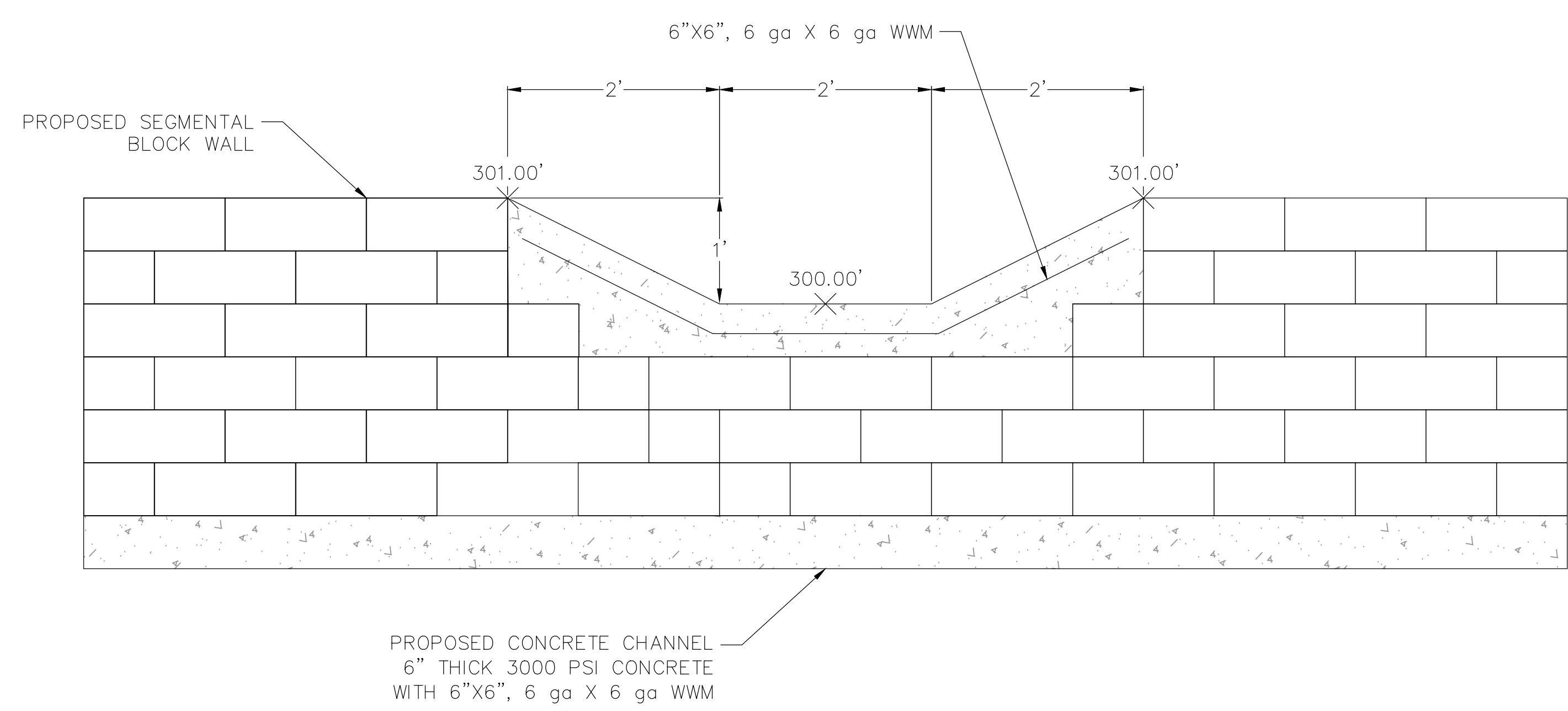


MATERIAL FOR PEDESTRIAN HANDRAIL SHALL BE AASHTO M270, GR. 36 AND SHALL BE PAINTED (BLACK). NUTS & WASHERS SHALL BE STAINLESS STEEL.

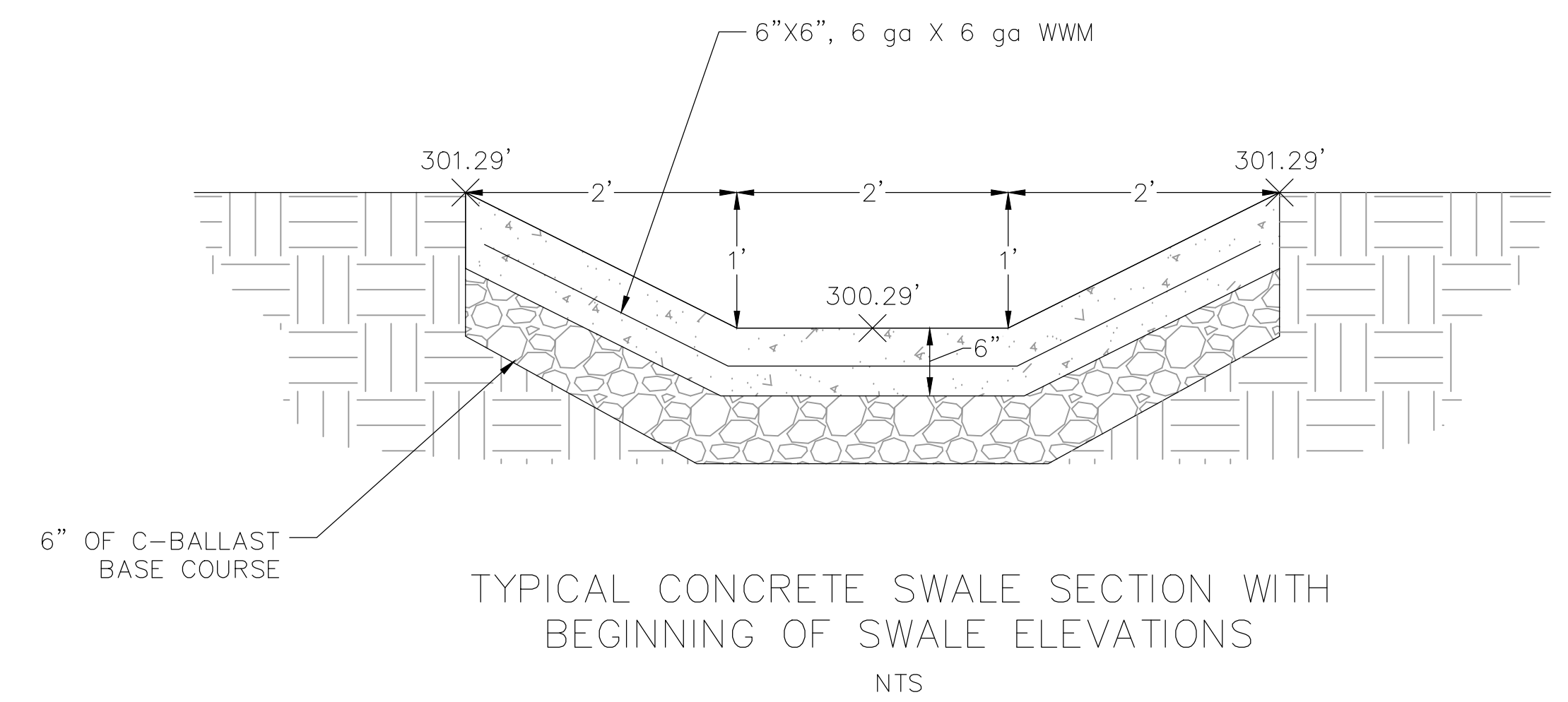
TYP. PEDESTRIAN HANDRAIL DETAIL  
NTS

**100% DESIGN  
SUBMITTAL**

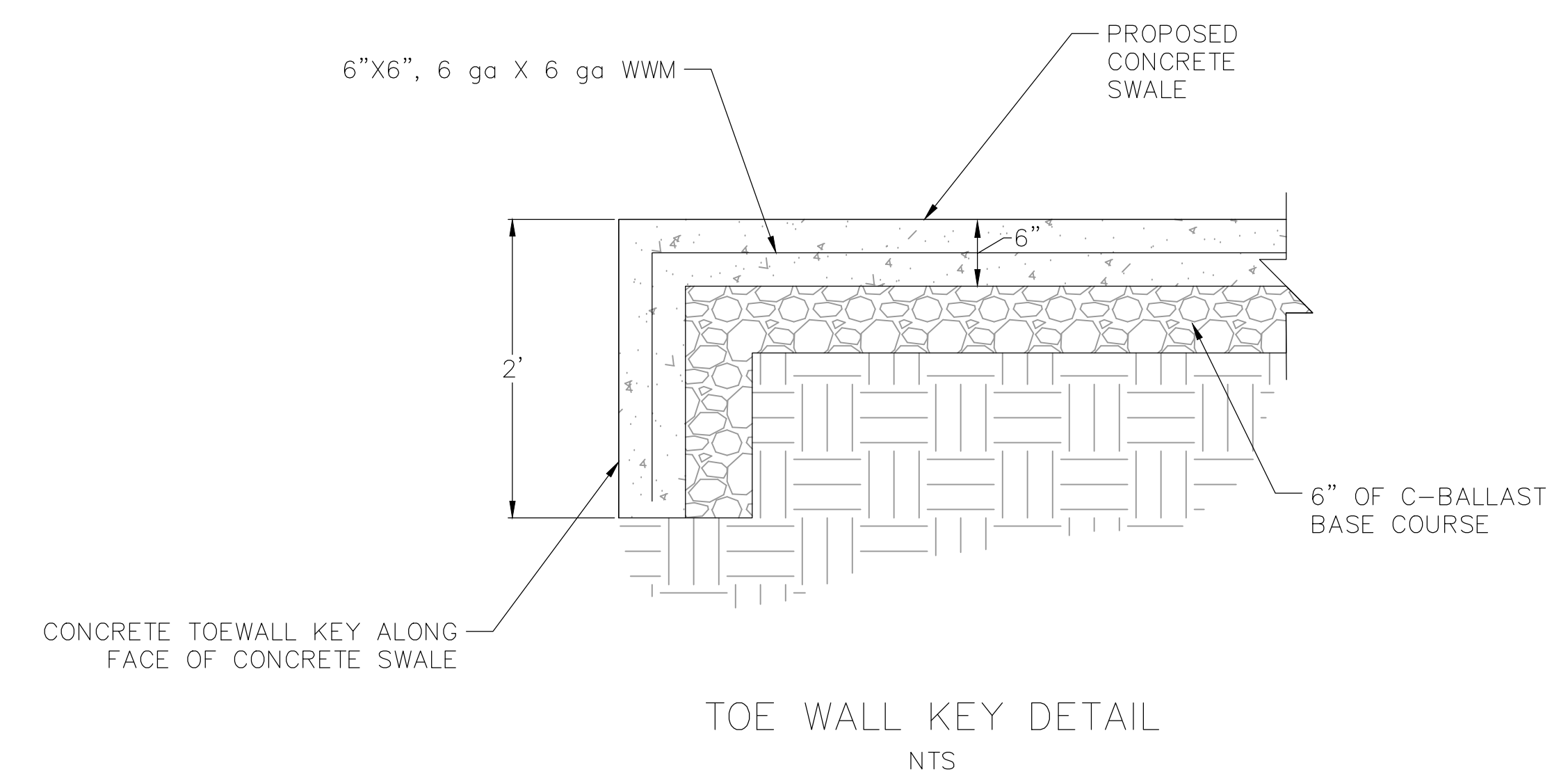
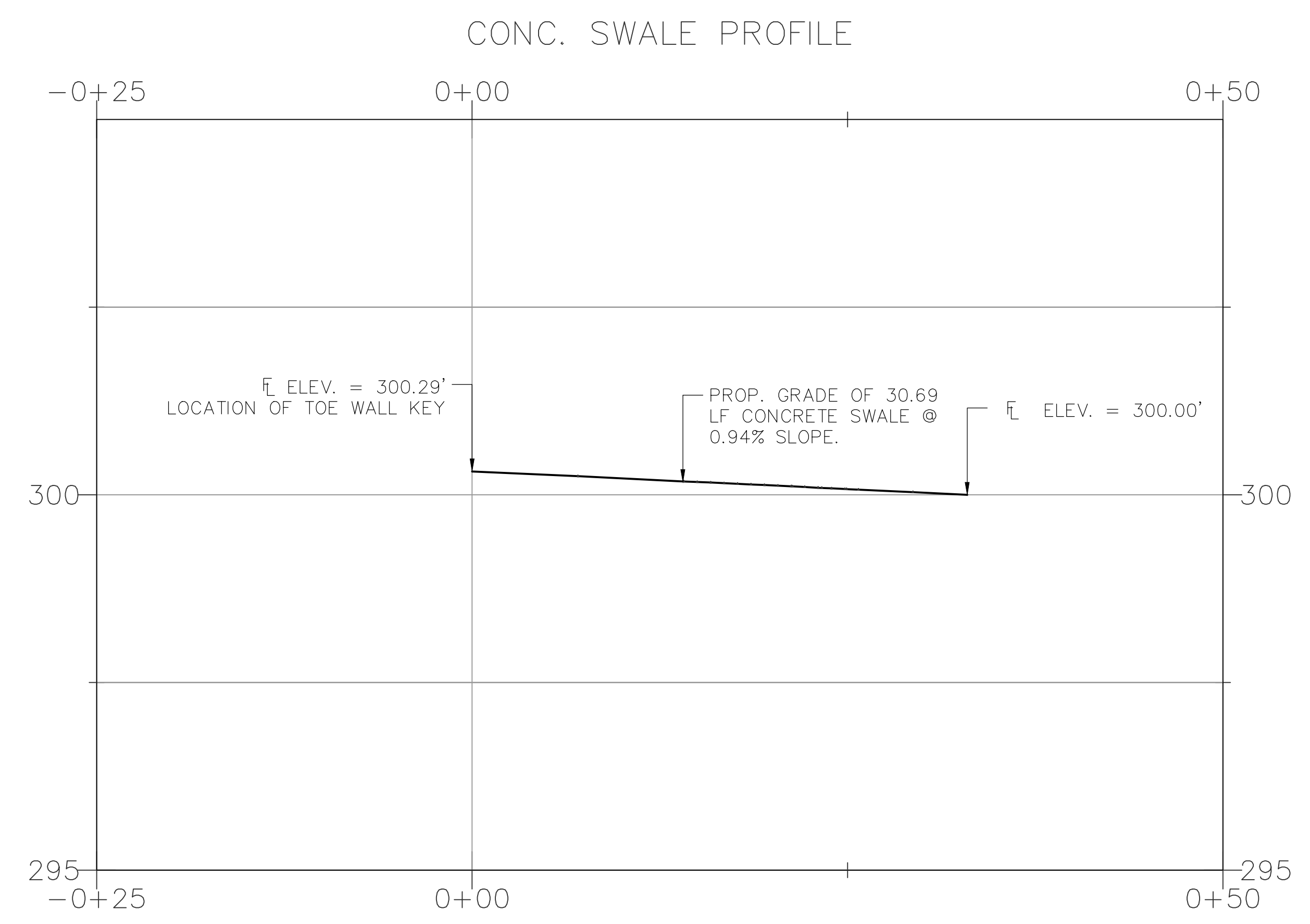
REVISIONS	DATE



CONCRETE SWALE & BLOCK WALL TIE-IN DETAIL  
NTS



TYPICAL CONCRETE SWALE SECTION WITH  
BEGINNING OF SWALE ELEVATIONS  
NTS

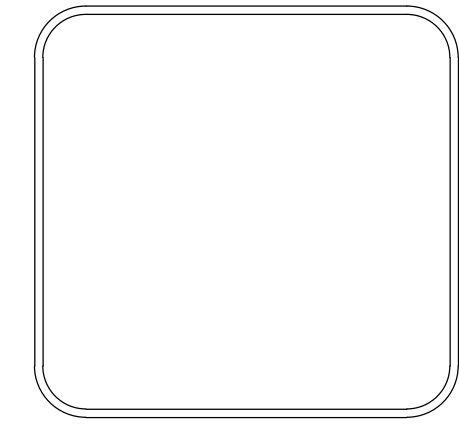


TOE WALL KEY DETAIL  
NTS

**100% DESIGN  
SUBMITTAL**

CITY OF LITTLE ROCK, ARKANSAS  
TAYLOR LOOP CREEK DRAINAGE  
PROJECT DETAILS II

DEPARTMENT OF PUBLIC WORKS  
CIVIL ENGINEERING  
701 W. MARKHAM  
LITTLE ROCK, ARKANSAS 72201



DRAWN BY  
CTG  
DESIGNED  
CTG  
CHECKED  
BJW  
DATE  
01-20-25  
SCALE  
NTS  
PROJECT NO.  
CLR 05-22-DR-36  
SHEET NO.  
C10