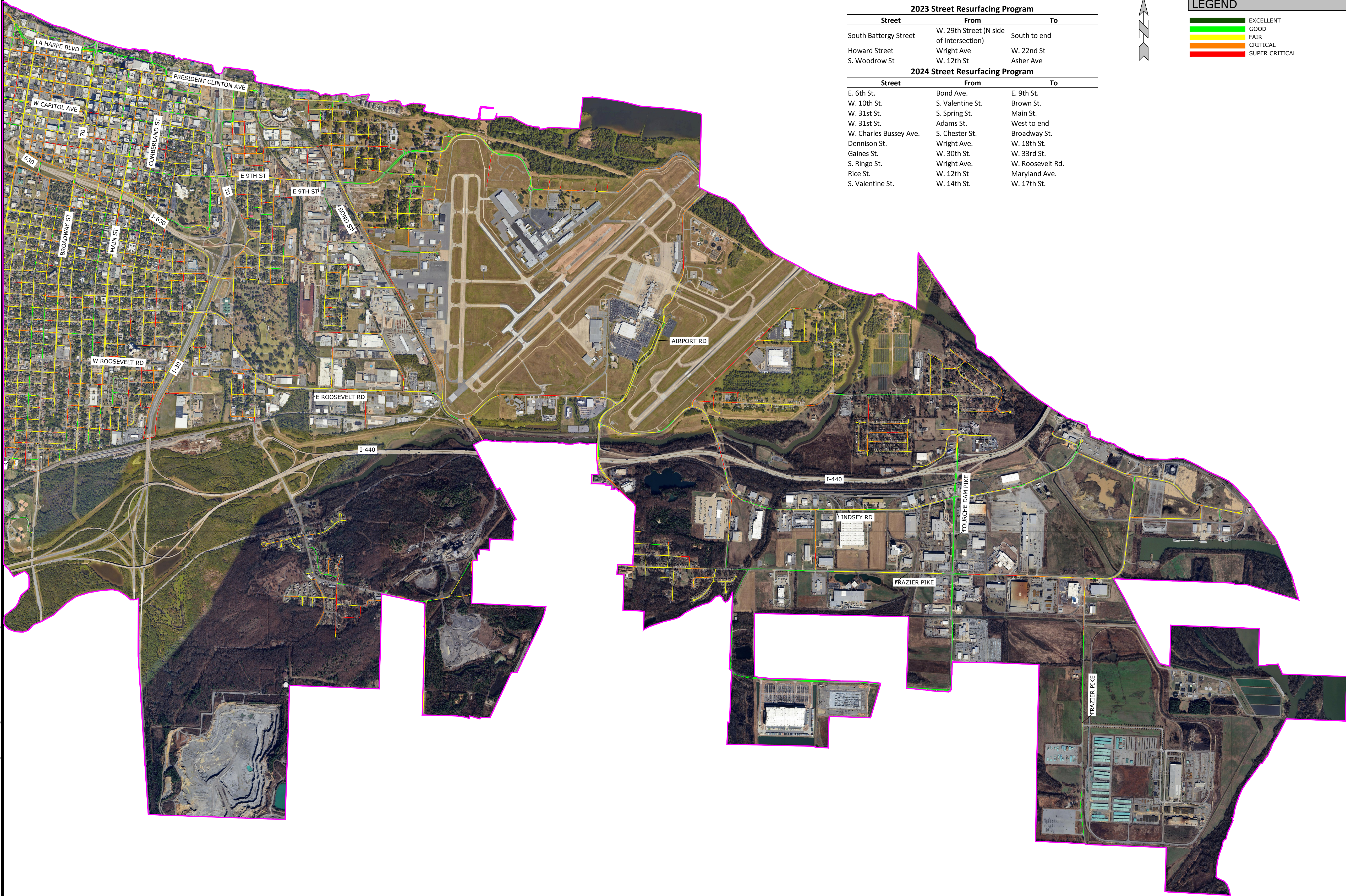


W:\2024\24-5752 City Of Little Rock Pavement Condition Assessment\Drawings\Civil\24-5752 - SITE.dwg, PRINTED ON: June 16, 2025 @ 4:57 PM



Ward 1

2023 Street Resurfacing Program		
Street	From	To
South Battery Street	W. 29th Street (N side of Intersection)	South to end
Howard Street	Wright Ave	W. 22nd St
S. Woodrow St	W. 12th St	Asher Ave

2024 Street Resurfacing Program		
Street	From	To
E. 6th St.	Bond Ave.	E. 9th St.
W. 10th St.	S. Valentine St.	Brown St.
W. 31st St.	S. Spring St.	Main St.
W. 31st St.	Adams St.	West to end
W. Charles Bussey Ave.	S. Chester St.	Broadway St.
Dennison St.	Wright Ave.	W. 18th St.
Gaines St.	W. 30th St.	W. 33rd St.
S. Ringo St.	Wright Ave.	W. Roosevelt Rd.
Rice St.	W. 12th St	Maryland Ave.
S. Valentine St.	W. 14th St.	W. 17th St.

LEGEND

EXCELLENT

GOOD

FAIR

CRITICAL

SUPER CRITICAL

MCE

McCLELLAND

DESIGNED TO SERVE ENGINEERS, INC.

7302 KANIS RD
LITTLE ROCK, AR
HTTP://WWW.MCE.US.COM

PRELIMINARY
NOT FOR
CONSTRUCTION

ORIGINAL SIGNATURE ON FILE

CITY OF LITTLE ROCK
PAVEMENT CONDITIONS BY WARD
LITTLE ROCK, AR

811

Know what's below.
Call before you dig.

REVISIONS		REV	DATE	DESCRIPTION

WARD 1 - 2

DESIGNED BY:	DRAWN BY:
DATE: 6/16/2025	REVISION:
SCALE:	JOB NUMBER: 24-5752

3