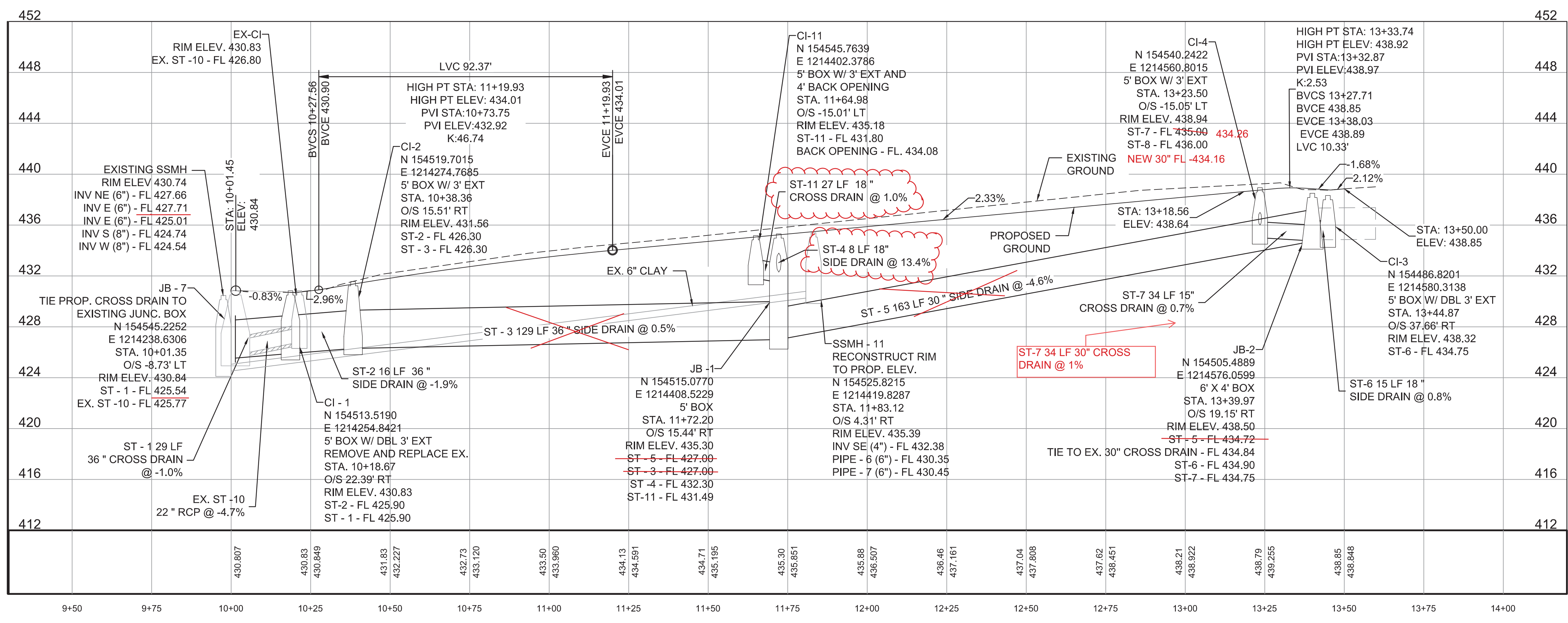


- NOTES:
1. REMOVAL OF EXISTING PIPE UNDER DRIVEWAY IS SUBSIDIARY TO SITE PREPARATION. REFER TO EXISTING CONDITIONS SHEET FOR ITEMS TO BE REMOVED OR RELOCATED.
  2. REFER TO CITY OF LITTLE ROCK STANDARD DETAILS FOR DRAINAGE DETAILS.
  3. FOR CI-11 REFER TO CITY OF LITTLE ROCK STANDARD DETAIL PW-2 INLET W/ BACK OPENING FOR SURFACE WATER.
  4. FOR CURB AND GUTTER DETAILS REFER TO CITY OF LITTLE ROCK STANDARD DETAIL PW-29 CURB & GUTTER SECTIONS RESIDENTIAL & COLLECTOR STREETS.



REVISIONS	DATE

CITY OF LITTLE ROCK, ARKANSAS

"F" STREET (SPRUCE TO PALM) RECONSTRUCTION

PLAN AND PROFILE

DEPARTMENT OF PUBLIC WORKS

CIVIL ENGINEERING

701 W. MARKHAM

LITTLE ROCK, ARKANSAS 72201

STATE OF ARKANSAS

LICENSED PROFESSIONAL ENGINEER

No. 21648

8/6/2024

DRAWN BY CV

DESIGNED CV

CHECKED JB

DATE 8/6/2024

SCALE 1" = 20' H, 1" = 5' V

PROJECT NO. CLR #03-18-ST-56

SHEET NO. C5