



2020 MacArthur Park Master Plan Summary





Introduction

LITTLE ROCK



Parks & Recreation
www.lrp.org / 501.321.4774
"A City In A Park"



MacArthur Park holds a tremendous amount of history and culture for the people of Little Rock. It encompasses the Arkansas Arts Center, the MacArthur Museum of Arkansas, and a number of memorials. It was the City of Little Rock's first park and is highly valued by the surrounding neighborhood. The goal of this Master Plan is to provide a fresh look to the park to coincide with the timing of the Arts Center renovations while also retaining the historical and familiar aspects of the park and the MacArthur museum.





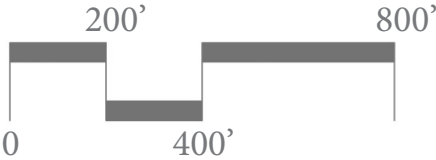
A place for
Families
Gathering
Connection
Discovery
Adventure
Celebration
Fitness and Fun
Reverence
Art
History



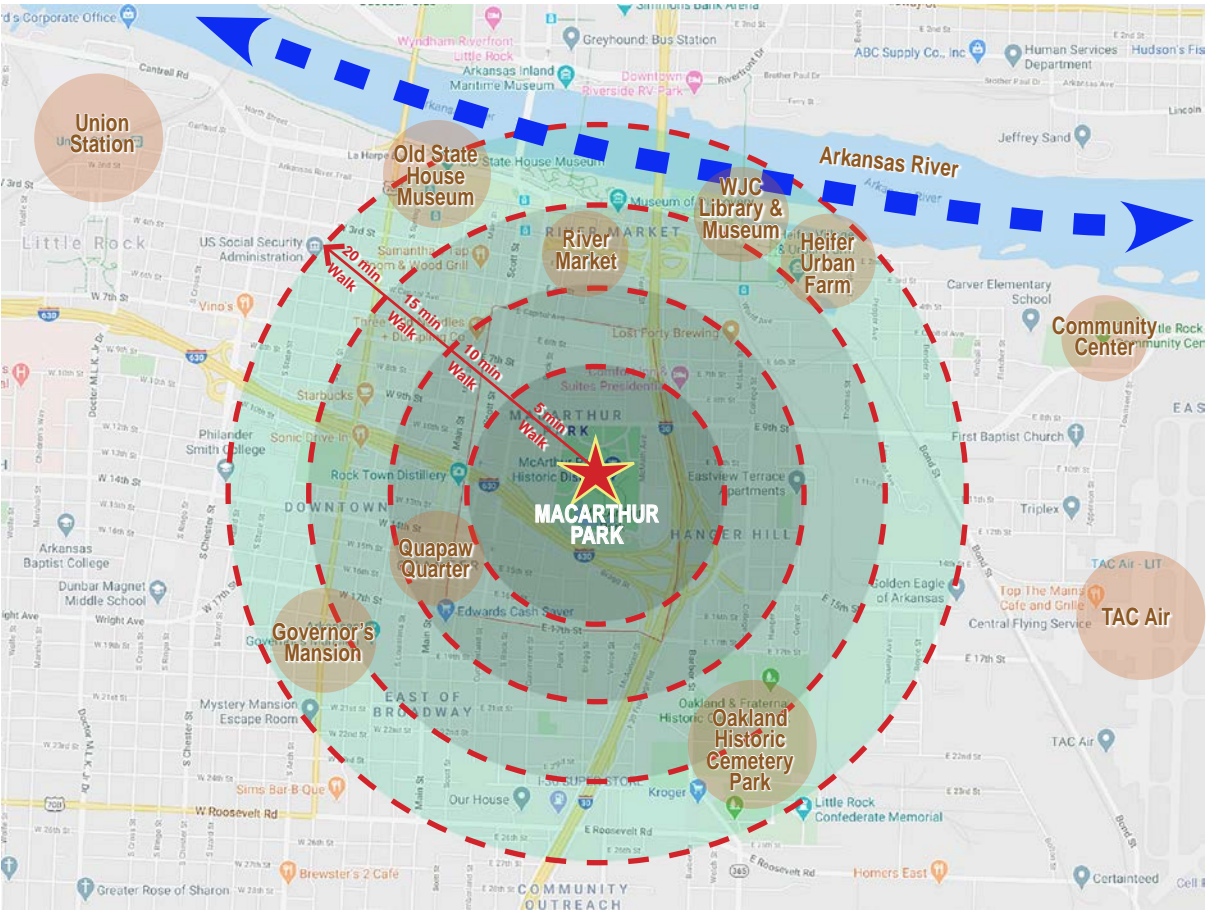
Site Analysis



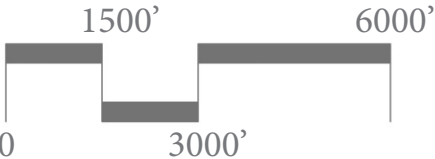
ADJACENT USES



SCALE 1"=400'



NEIGHBORHOOD WALK TIME



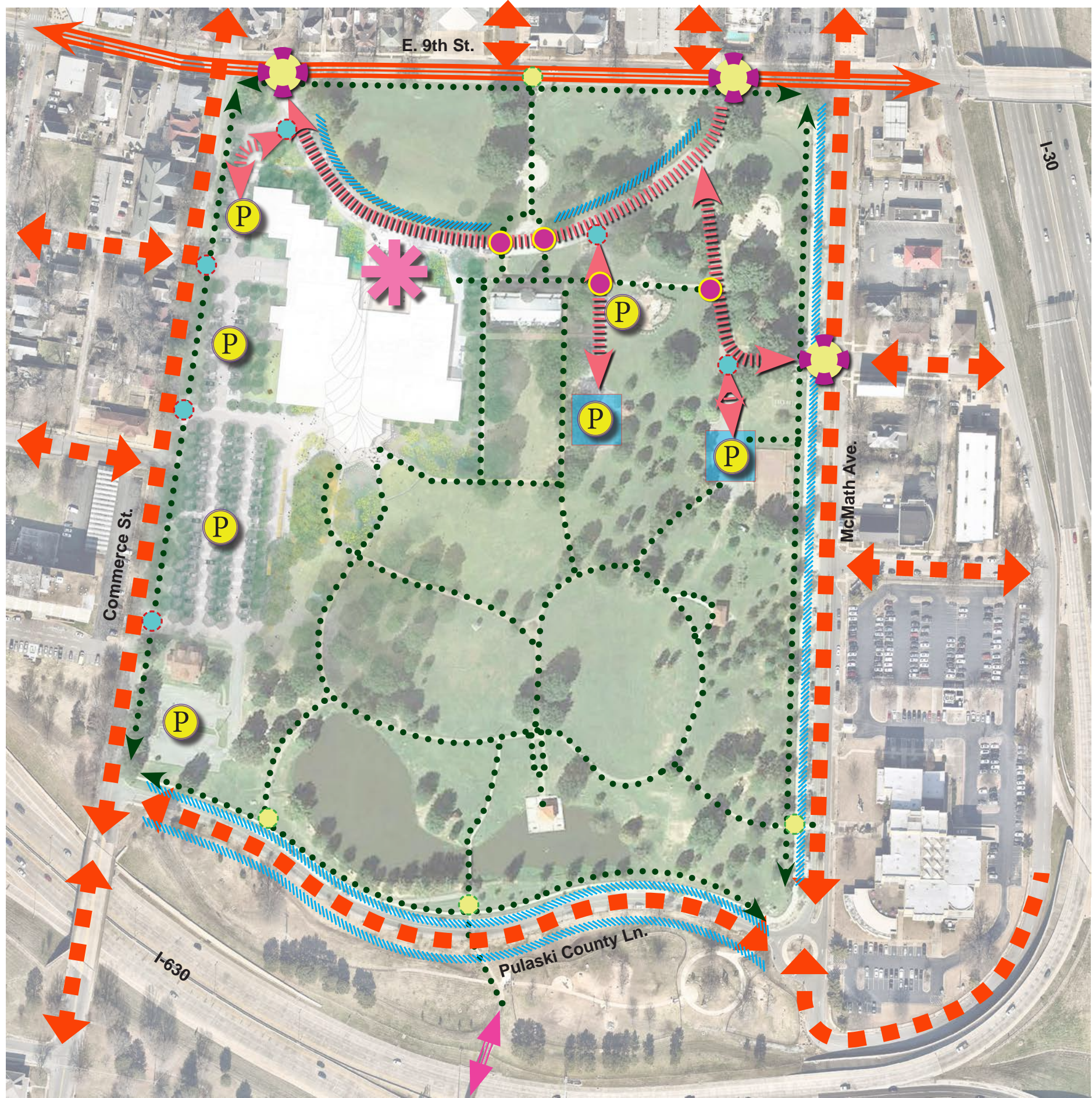
SCALE 1"=3000'

LEGEND














- VEHICULAR ACCESS
- VEHICULAR CONNECTION
- PEDESTRIAN CONNECTION
- PEDESTRIAN BRIDGE TO NEIGHBORHOOD
- HIGHWAY TRAFFIC
- SINGLE FAMILY RESIDENTIAL
- MULTI FAMILY RESIDENTIAL
- COMMERCIAL / RETAIL
- PUBLIC / CIVIC

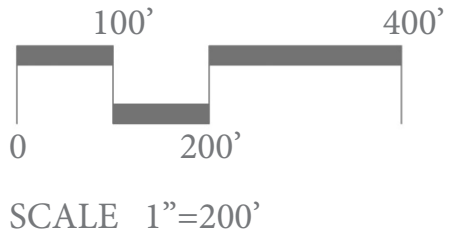
- 1 OPEN SPACE AT PARK ENTRY
- 2 LIMITS OF NO WORK (MACARTHUR MUSEUM OF ARKANSAS)
- 3 REIMAGINED ARKANSAS ARTS CENTER
- 4 OPEN SPACE WITH POND - INFORMAL
- 5 OPEN SPACE - FORMAL
- 6 FIREHOUSE HOSTEL & MUSEUM
- 7 DOG PARK
- 8 UALR WILLIAM H. BOWEN SCHOOL OF LAW
- 9 OPEN SPACE (ARDOT PROPERTY)

SITE CONTEXT



LEGEND

-  PEDESTRIAN ACCESS
-  PARKING ACCESS
-  VEHICULAR INGRESS / EGRESS
-  ARTS CENTER DROP OFF
-  SIDEWALK
-  PARKING LOT
-  PRIMARY VEHICLE CIRCULATION (4 LANES)
-  SECONDARY VEHICLE CIRCULATION (2 LANES)
-  VEHICULAR CIRCULATION INTERIOR TO PARK
-  PEDESTRIAN BRIDGE
-  PARALLEL PARKING
-  NO RAMP PROVIDED @ EXISTING STEPS
-  ADA STRIPING AT PARKING AREAS NOT VISIBLE



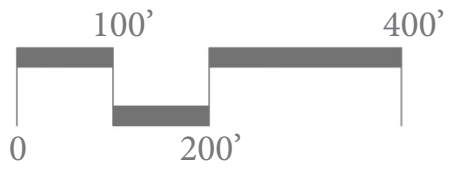
CIRCULATION & ACCESS / ACCESSIBILITY ANALYSIS



LEGEND

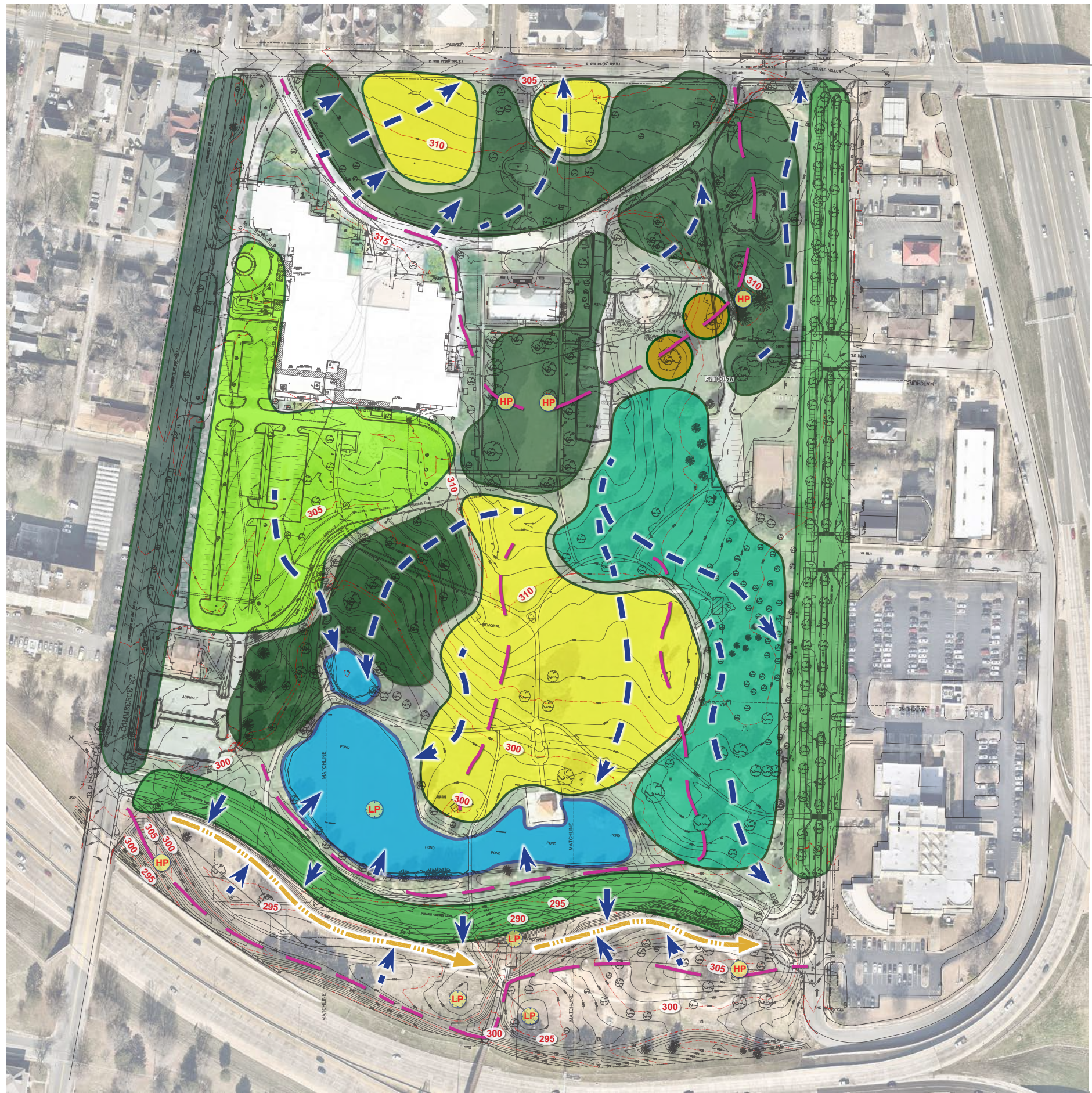
- AHPP FACADE EASEMENT BOUNDARY
- REIMAGINED ARKANSAS ARTS CENTER
- MACARTHUR PARK DESIGN LIMIT
- ★ DESTINATIONS
- AMENITIES
- MEMORIALS/MONUMENTS

- 1 ART CENTER AREA
- 2 MACARTHUR MUSEUM OF ARKANSAS
- 3 ARKANSAS KOREAN WAR VETERANS MEMORIAL
- 4 PLAYGROUND
- 5 MACARTHUR PARK MULTIPURPOSE COURT
- 6 RESTROOM
- 7 EVENT PANELS AND PUMP HOUSE FOR POND WATER FEATURE
- 8 LITTLE ROCK FIREHOUSE HOSTEL & MUSEUM
- 9 UALR WILLIAM H. BOWEN SCHOOL OF LAW
- 10 MACARTHUR DOG PARK
- 11 GAZEBO



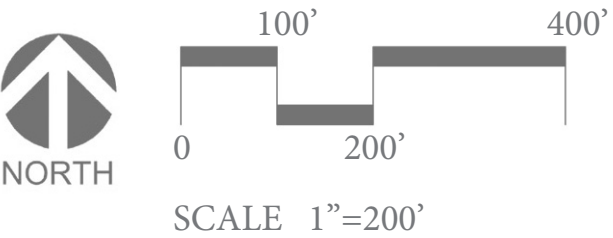
SCALE 1"=200'

DESTINATION / INTEREST ANALYSIS



LEGEND

- SWALE
- SURFACE DRAINAGE FLOW
- RIDGE LINE
- SIGNIFICANT TREES TO PRESERVE
- EXISTING POND (LOW POINT)
- OPEN LAWN AREA
- REIMAGINED ARTS CENTER WITH NEW LANDSCAPE
- LARGE CANOPY TREE ZONE (DBH > 12")
- SMALL / MEDIUM CANOPY TREE ZONE (DBH < 12")
- LARGE STREET TREES (DBH > 10")
- NEW / RECENTLY PLANTED STREET TREES (DBH < 10")
- HIGH POINT
- LOW POINT



NATURAL RESOURCES ANALYSIS



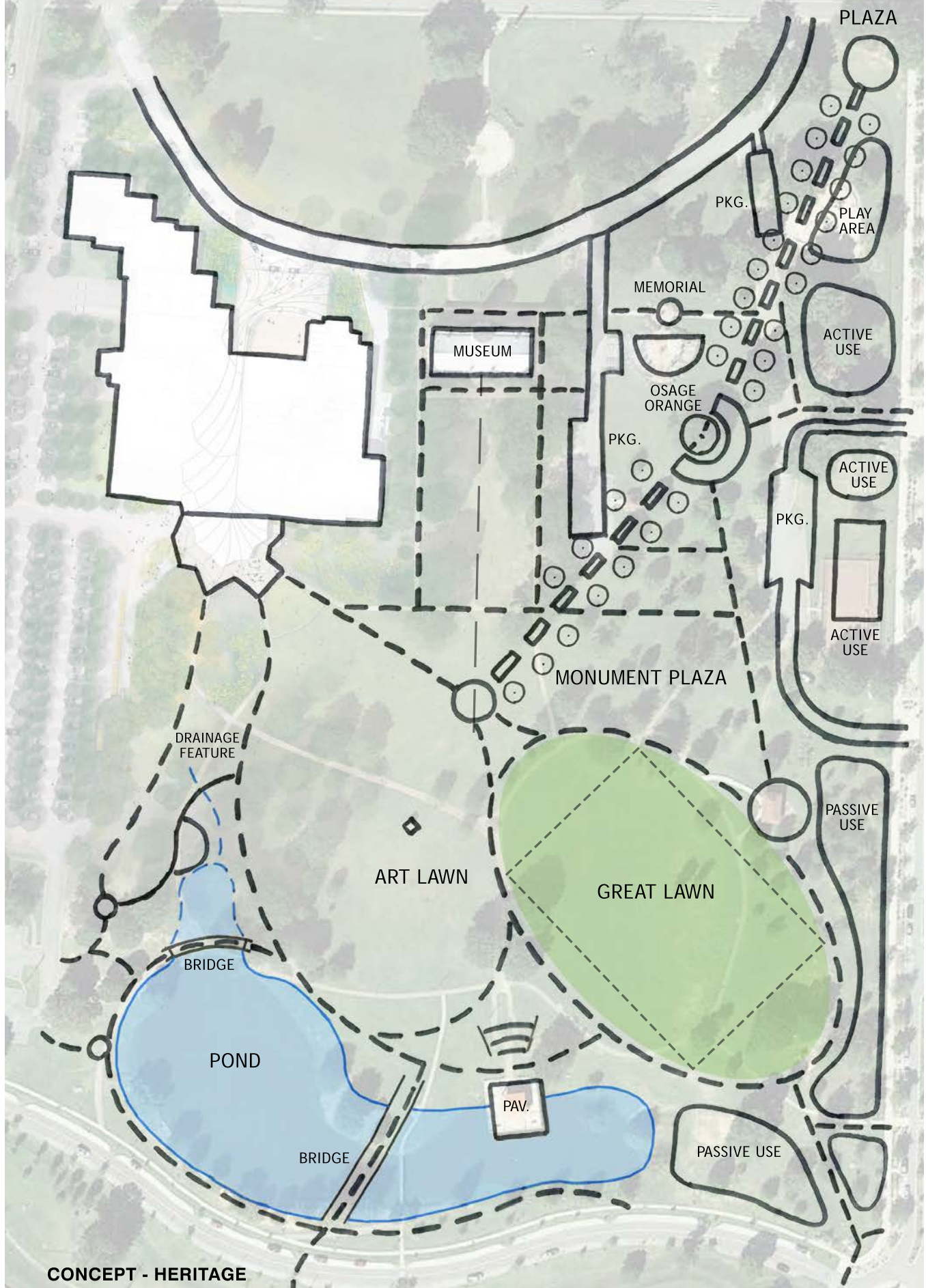


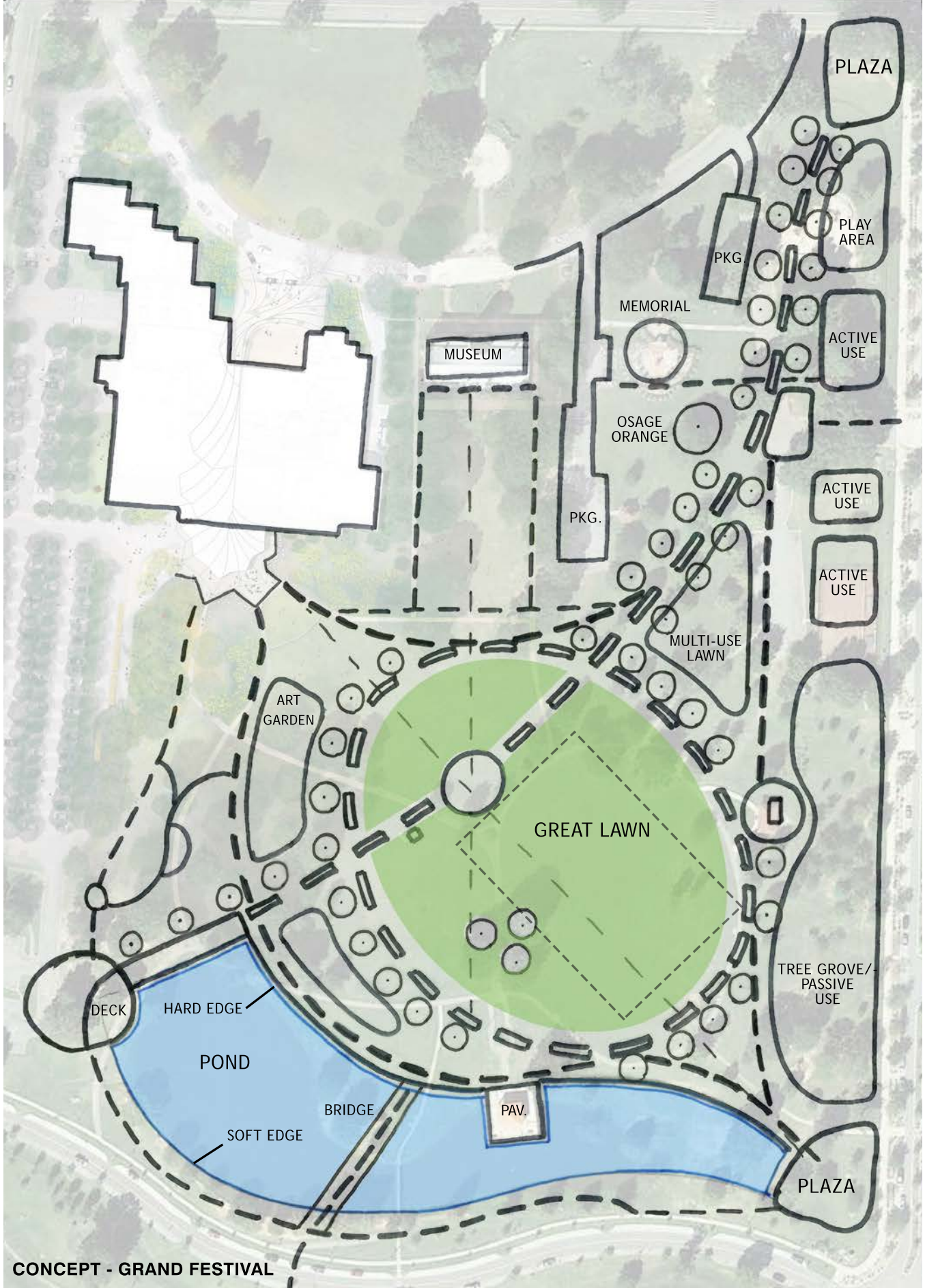
Concept Plans

LITTLE ROCK

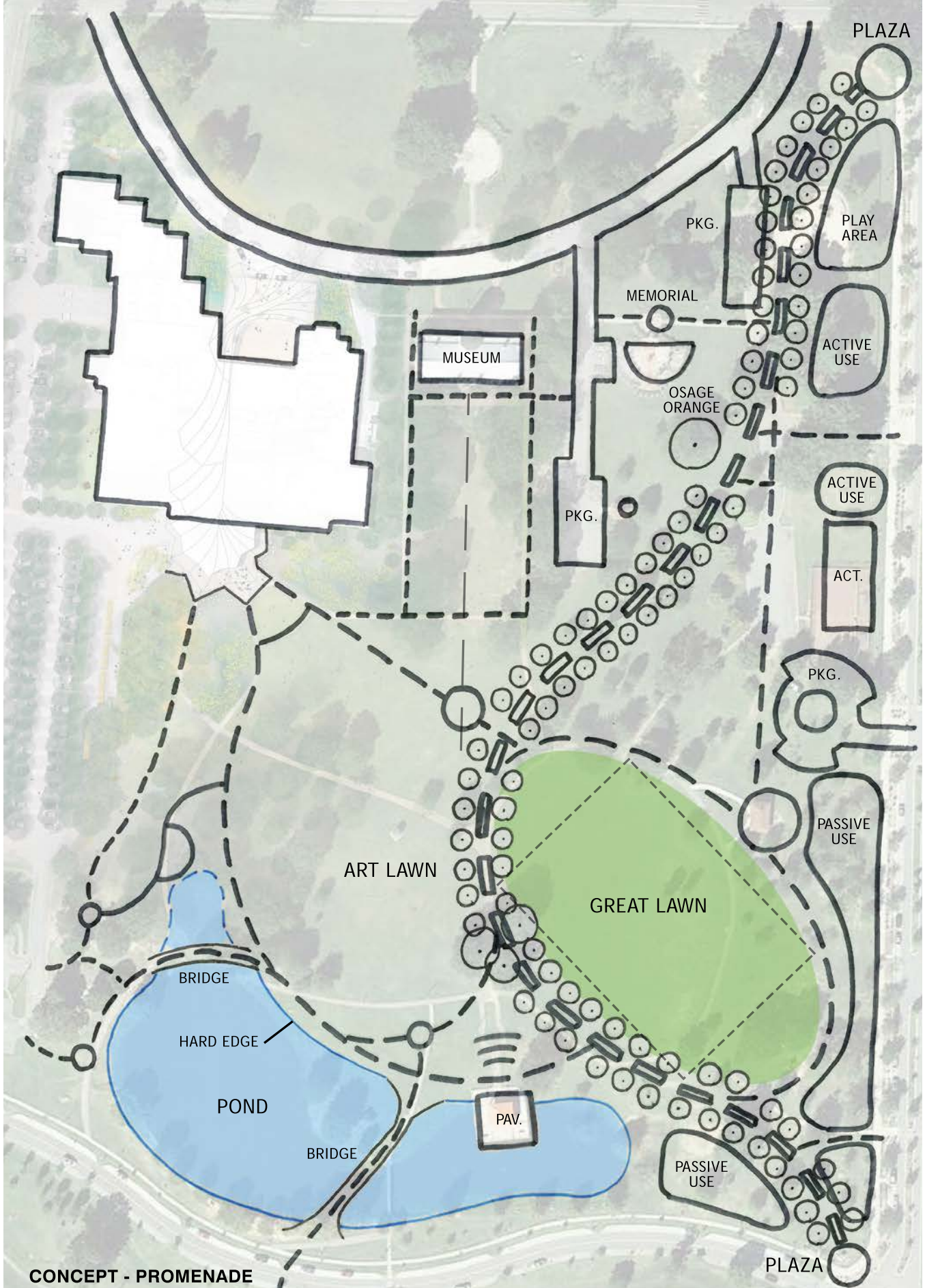


Parks & Recreation
www.lrbp.org / 501.511.4774
"A City In A Park"





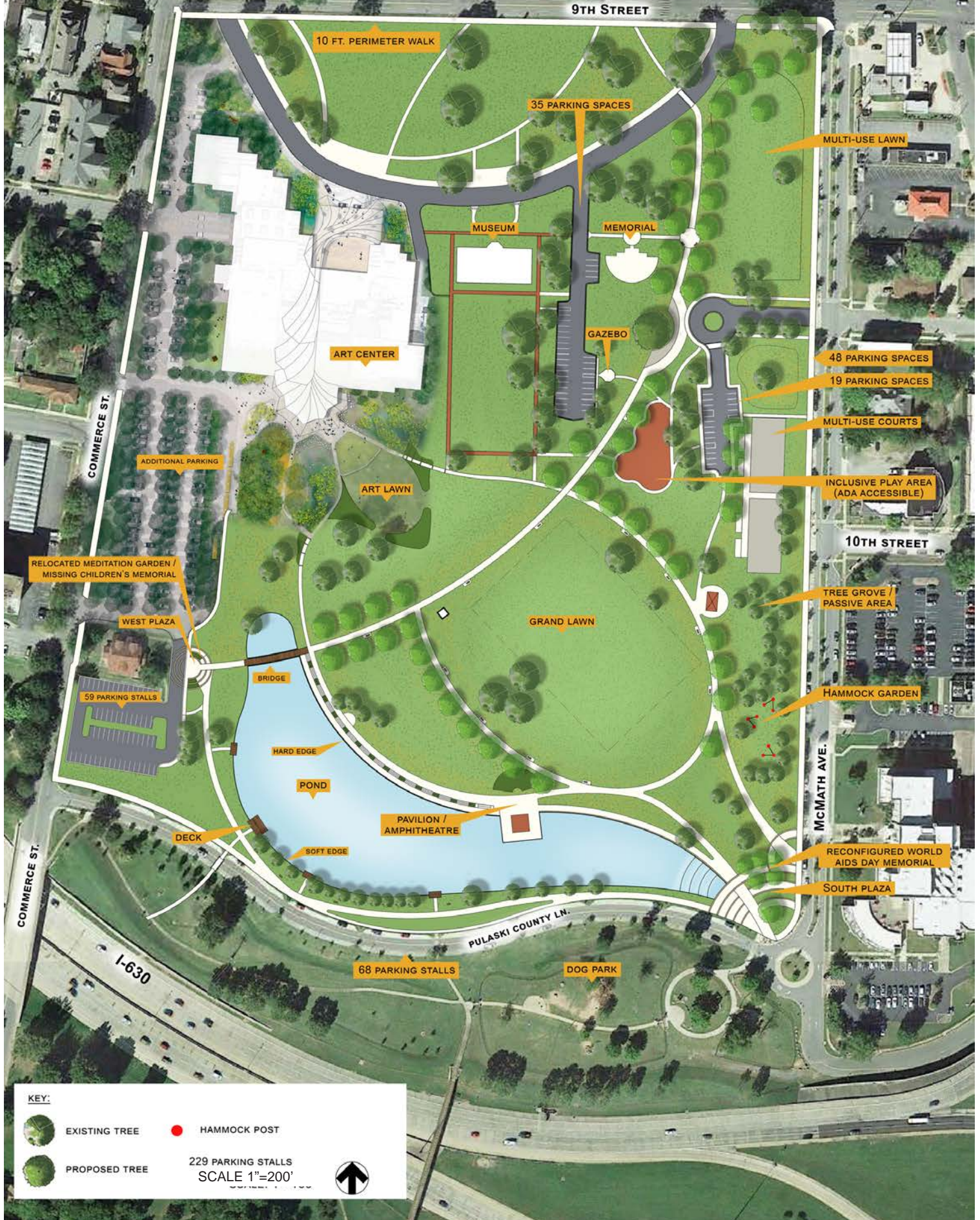
CONCEPT - GRAND FESTIVAL



CONCEPT - PROMENADE



Master Plan



A place with

Open lawns

Gathering Spaces

Special Events (earthen amphitheater)

Hammock Gardens





A place with

Access to Water

Fishing

Prominent Walkways

Connectivity





A place with

Relaxation Opportunities

Inclusive Playground

Entry Plazas

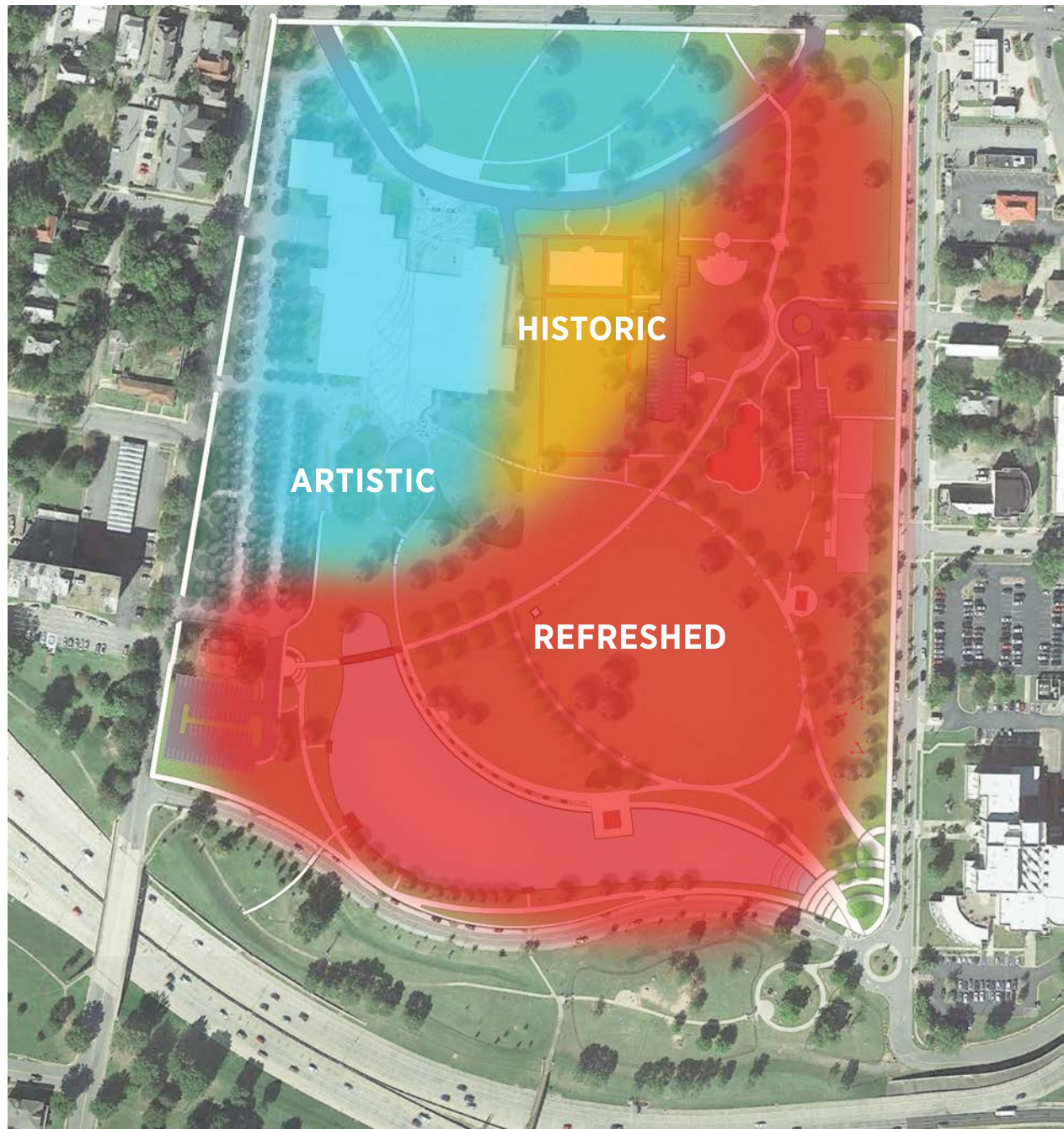
Updated Lighting



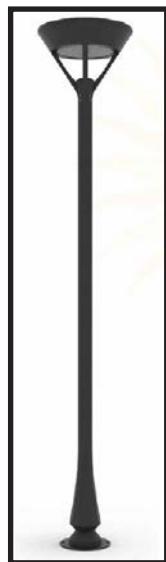
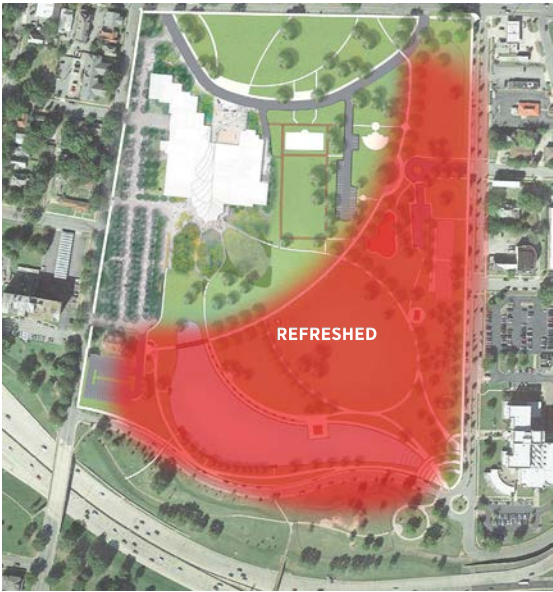




Amenities



Due to the park's variety of uses and activities, this master plan identifies three areas for different amenity styles. These amenities generally include lighting and site furnishings consisting of benches, trash receptacles, picnic tables, and drinking fountains.







Budget

MacArthur Park - Preliminary Cost Estimate

Item	Quantity	Units	Unit Cost	Total
Sitework				
Mobilization	1	LS	\$ 50,000.00	\$ 50,000.00
Erosion Control	2247	LF	\$ 5.00	\$ 11,235.00
Tree Protection	1	LS	\$ 5,000.00	\$ 5,000.00
Unclassified Earthwork	4000	CY	\$ 20.00	\$ 80,000.00
Pond Reconfiguration	5025	CY	\$ 20.00	\$ 100,500.00
Unclassified Demolition	1	LS	\$ 50,000.00	\$ 50,000.00
Subtotal Sitework				\$ 296,735.00
Site Hardscape Elements				
10' W Promenade 5" Thick Concrete	75313	SF	\$ 6.00	\$ 451,878.00
6' W Sidewalk	12600	SF	\$ 6.00	\$ 75,600.00
5" Thick Decorative/Colored Concrete	828	SF	\$ 10.00	\$ 8,280.00
Concrete Curb & Gutter	1927	LF	\$ 15.00	\$ 28,905.00
ADA Ramp	5	EA	\$ 1,500.00	\$ 7,500.00
Paver Crosswalk	608	SF	\$ 12.00	\$ 7,296.00
Asphalt Paving (Parking)	29614	SF	\$ 3.50	\$ 103,649.00
Striping (Parking Lot) (Prep/Paint/Seal)	738	LF	\$ 3.00	\$ 2,214.00
HC Marking (Prep/Paint/Seal)	10	EA	\$ 300.00	\$ 3,000.00
HC Parking Sign	10	EA	\$ 500.00	\$ 5,000.00
Safety Railing at Fishing Deck	190	LF	\$ 80.00	\$ 15,200.00
Safety Railing at Walk Edge	350	LF	\$ 150.00	\$ 52,500.00
Decorative Railing on Bridge	210	LF	\$ 150.00	\$ 31,500.00
Splash Pad / Boulder Water fall	3126	SF	\$ 90.00	\$ 281,340.00
Hard edge on pond (Retaining wall	443	SLF	\$ 65.00	\$ 28,795.00
Pavilion Structure (amphitheater), paving upgrades	1	EA	\$ 60,000.00	\$ 60,000.00
Concrete Steps along water	2112	SF	\$ 20.00	\$ 42,240.00
Decorative Planters (between stairs)	390	SF	\$ 8.50	\$ 3,315.00
Decomposed Granite Gravel (Hammock Garden)	1500	SF	\$ 3.00	\$ 4,500.00
Hammock Posts	12	EA	\$ 200.00	\$ 2,400.00
Playground	1	EA	\$ -	\$ -
Basketball Goals	2	EA	\$ 5,000.00	\$ 10,000.00
Restroom Update	1	EA	\$ 80,000.00	\$ 80,000.00
Interpretive Signage	2	EA	\$ 1,500.00	\$ 3,000.00
Bench w/ concrete pad	20	EA	\$ 2,000.00	\$ 40,000.00
Picnic Table	16	EA	\$ 3,500.00	\$ 56,000.00
Pedestrian Bridge and Wier at Pond	1	LS	\$ 75,000.00	\$ 75,000.00
Drop Off Plaza	1	LS	\$ 150,000.00	\$ 150,000.00
Dog Park Plaza	1	LS	\$ 150,000.00	\$ 150,000.00
Hostel Plaza / Garden	2547	SF	\$ 15.00	\$ 38,205.00
Hostel Paving	1227	SF	\$ 15.00	\$ 18,405.00
Shade Structure on Fishing Deck	0	LS	\$ 75,000.00	\$ -
Subtotal Site Hardscape Elements				\$ 1,835,722.00
Electrical Elements				
Pedestrian Light- Solar	38	EA	\$ 4,000.00	\$ 152,000.00
Electrical Service	0	EA	\$ 20,000.00	\$ -
Miscellaneous Electrical Equipment	1	LS	\$ 15,000.00	\$ 15,000.00
Subtotal Electrical Elements				\$ 167,000.00

Landscape Elements				
3" Shade Tree	31	EA	\$ 500.00	\$ 15,500.00
2" Shade Tree	19	EA	\$ 400.00	\$ 7,600.00
30 Gal Ornamental Tree	7	EA	\$ 250.00	\$ 1,750.00
3 Gal Shrubs	10	EA	\$ 30.00	\$ 300.00
1 Gal Shrubs	50	EA	\$ 15.00	\$ 750.00
Groundcover	1500	SF	\$ 6.00	\$ 9,000.00
Mulch	41	CY	\$ 40.00	\$ 1,640.00
Bed Prep	4436	SF	\$ 5.00	\$ 22,180.00
Zoysia Sod	234166	SF	\$ 3.50	\$ 819,581.00
Irrigation	234166	SF	\$ 0.25	\$ 58,541.50
Subtotal Landscape Elements			\$	936,842.50
Subtotal			\$	3,236,299.50
Contingency			15%	\$ 485,444.93
Engineering Fees			10%	\$ 372,174.44
Administration, Geotechnical, Construction Material Testing			1%	\$ 33,495.70
Total			\$	4,127,414.57
<p>This statement was prepared utilizing standard cost estimate practices. It is understood and agreed that this is an estimate only, and that Engineer shall not be liable to Owner or to a third party for any failure to accurately estimate the cost of the project, or any part thereof.</p>				