

L.R.P.D.

COMPSTAT

December 14 2017



*The
Badge Of
Honor*



LITTLE ROCK POLICE DEPARTMENT

What is COMPSTAT?

COMPSTAT stands for Comparative Statistics. In a weekly meeting of police command staff, divisional supervisors and other personnel, all parties discuss recent Part I criminal activity and propose strategies to address the situation.

Each meeting covers a three week period, and rotates between the three patrol divisions – Downtown, Northwest, and Southwest. All three divisions provide maps tracking activity in seven different crime types, but only one division presents per week.

Other divisions also report – Special Operations Division, Special Investigations Division, Major Crimes Division, and the Headquarters Division – Communications Section. Those divisions reports are not included in this report because they may contain sensitive law enforcement information.

Glossary and Notes

Part I Incident - The FBI standard for its *Crime in the United States* report, issued each fall. Part I violent crimes are murder or non-negligent homicide, rape, robbery and aggravated assault. Part I property crimes are burglary, larceny, auto theft and arson.

**In our COMPSTAT report, we only include maps of non-domestic aggravated assault incidents, but all aggravated assault incidents are included on the charts.*

Part I Offense Comparison City Wide

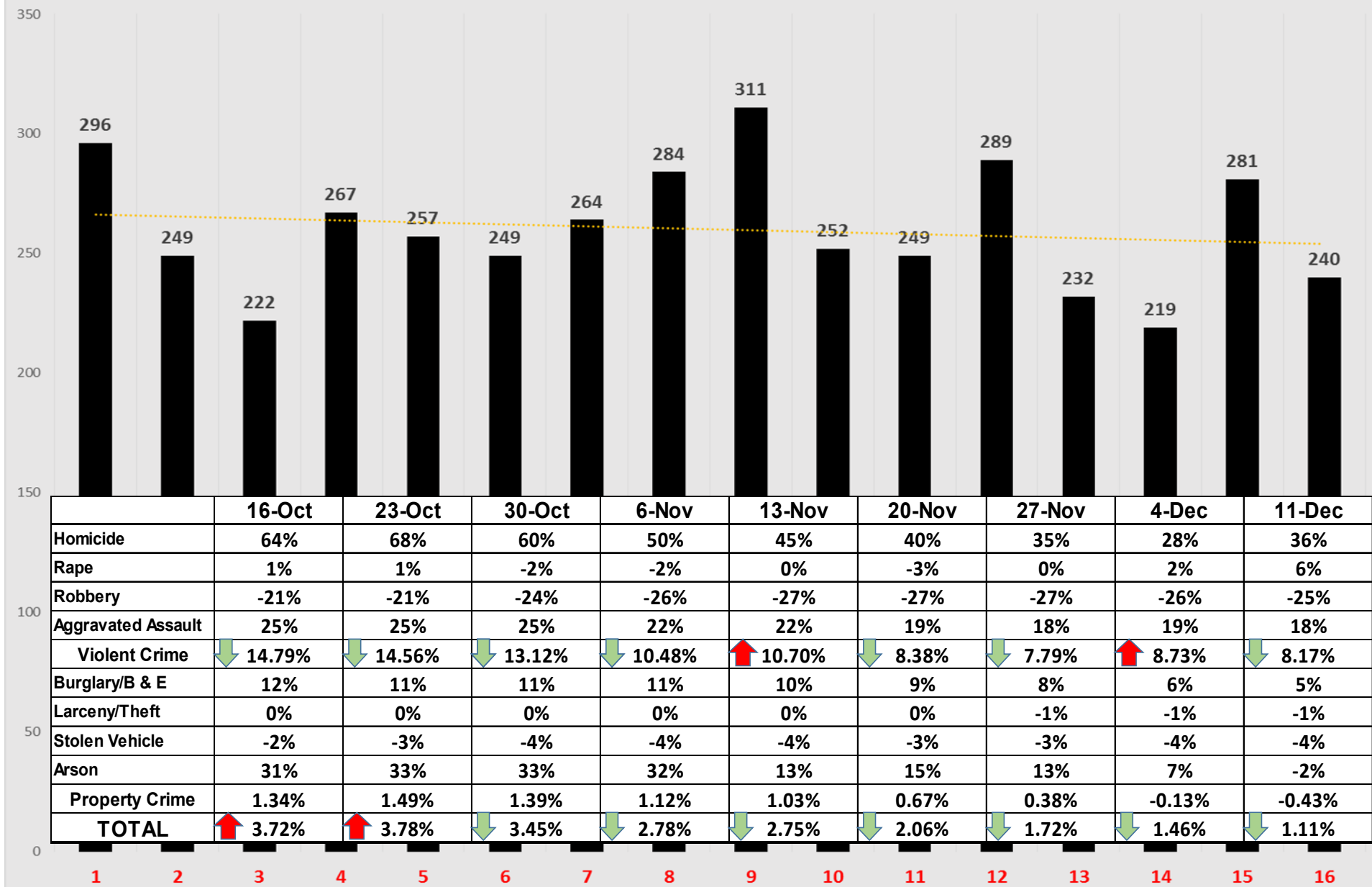
Jan 1 - December 11 2017 v 2016

PART I INCIDENT	TOTAL		CHANGE		2017 by Division		
	2017	2016	NUMBER	PERCENT	DT	NW	SW
Homicide	53	39	14	36%	21	11	21
Rape	146	138	8	6%	61	47	38
Robbery	470	625	-155	-25%	155	168	147
Aggravated Assault	2429	2062	367	18%	941	676	812
Violent Crime	3098	2864	234	8%	1178	902	1018
Burglary/B & E	2193	2084	109	5%	667	852	674
Larceny/Theft	9812	9928	-116	-1%	2978	4622	2212
Stolen Vehicle	1051	1100	-49	-4%	346	379	326
Arson	45	46	-1	-2%	24	10	11
Property Crime	13056	13112	-56	0%	3991	5853	3212
TOTAL	16154	15976	178	1.11%	5169	6755	4230
Percentage of Total YTD - by Division					32.00%	41.82%	26.19%

These figures are based on offenses reported to LRPD and are retrieved from the Department's Records Management System.

The figures may include some offenses that may be reclassified after further investigation

City Wide Number of Part I Offenses - Last 16 Weeks



Part I Offense Comparison - Downtown

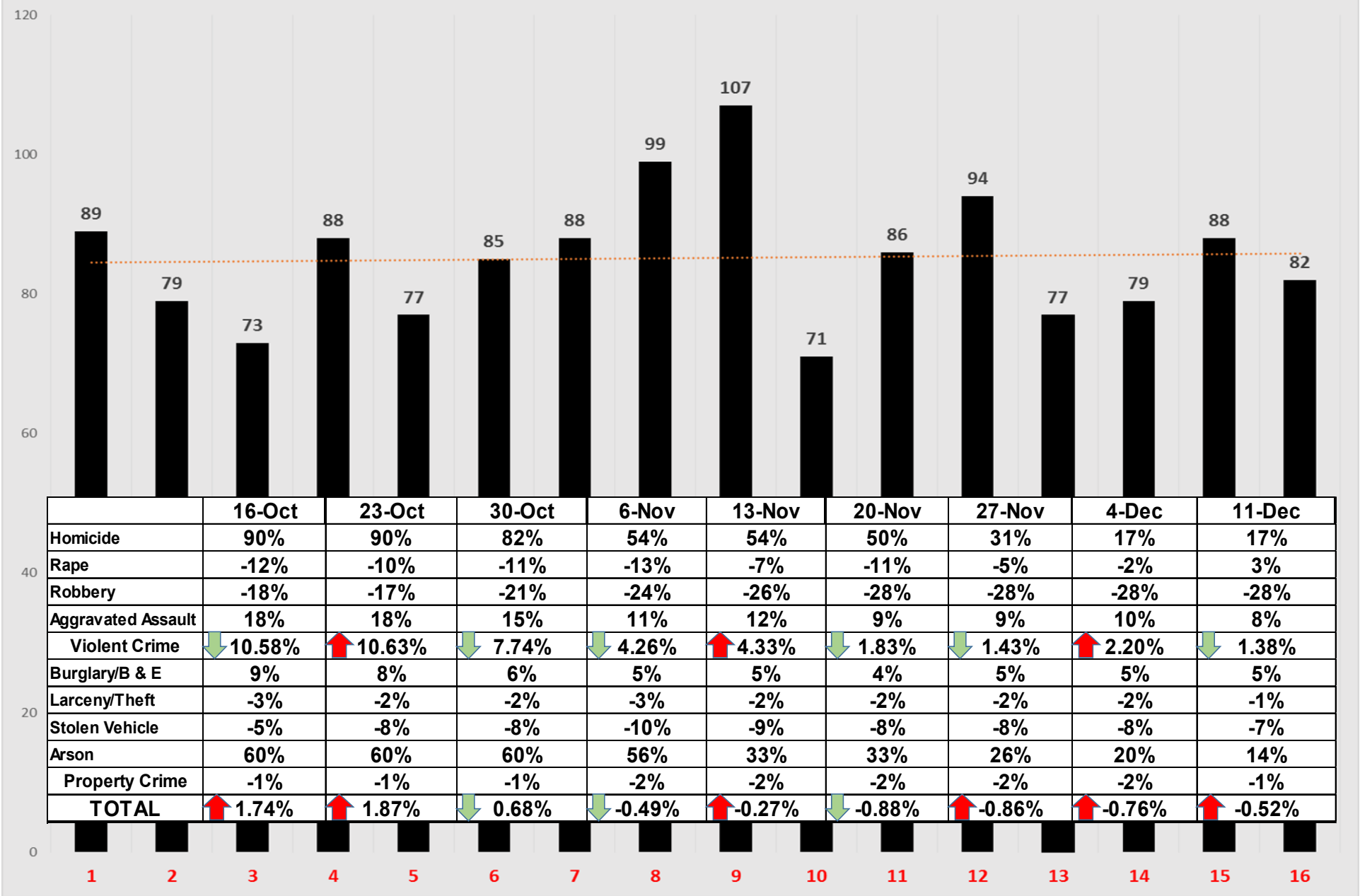
Jan 1 - December 11 2017 v 2016

PART I INCIDENT	DT		CHANGE		YTD 2017 - BY DISTRICT								
	2017	2016	NUMBER	PERCENT	40	41	42	43	50	51	52	53	54
Homicide	21	18	3	17%	0	3	1	0	1	2	6	1	7
Rape	61	59	2	3%	9	1	1	5	3	11	5	10	16
Robbery	155	215	-60	-28%	29	9	8	4	7	12	40	18	28
Aggravated Assault	941	870	71	8%	63	59	30	38	28	64	161	165	333
Violent Crime	1178	1162	16	1%	101	72	40	47	39	89	212	194	384
Burglary/B&E	667	638	29	5%	84	39	36	24	97	43	110	117	117
Larceny/Theft	2978	3022	-44	-1%	483	179	180	141	613	212	277	426	467
Stolen Vehicle	346	374	-28	-7%	57	14	41	9	69	23	33	46	54
Arson	24	21	3	14%	0	2	0	3	1	1	9	4	4
Property Crime	3991	4034	-43	-1%	624	232	257	174	779	278	420	589	638
TOTAL	5169	5196	-27	-0.52%	725	304	297	221	818	367	632	783	1022

These figures are based on offenses reported to LRPD and are retrieved from the Department's Records Management System.

The figures may include some Offenses that may be reclassified after further investigation

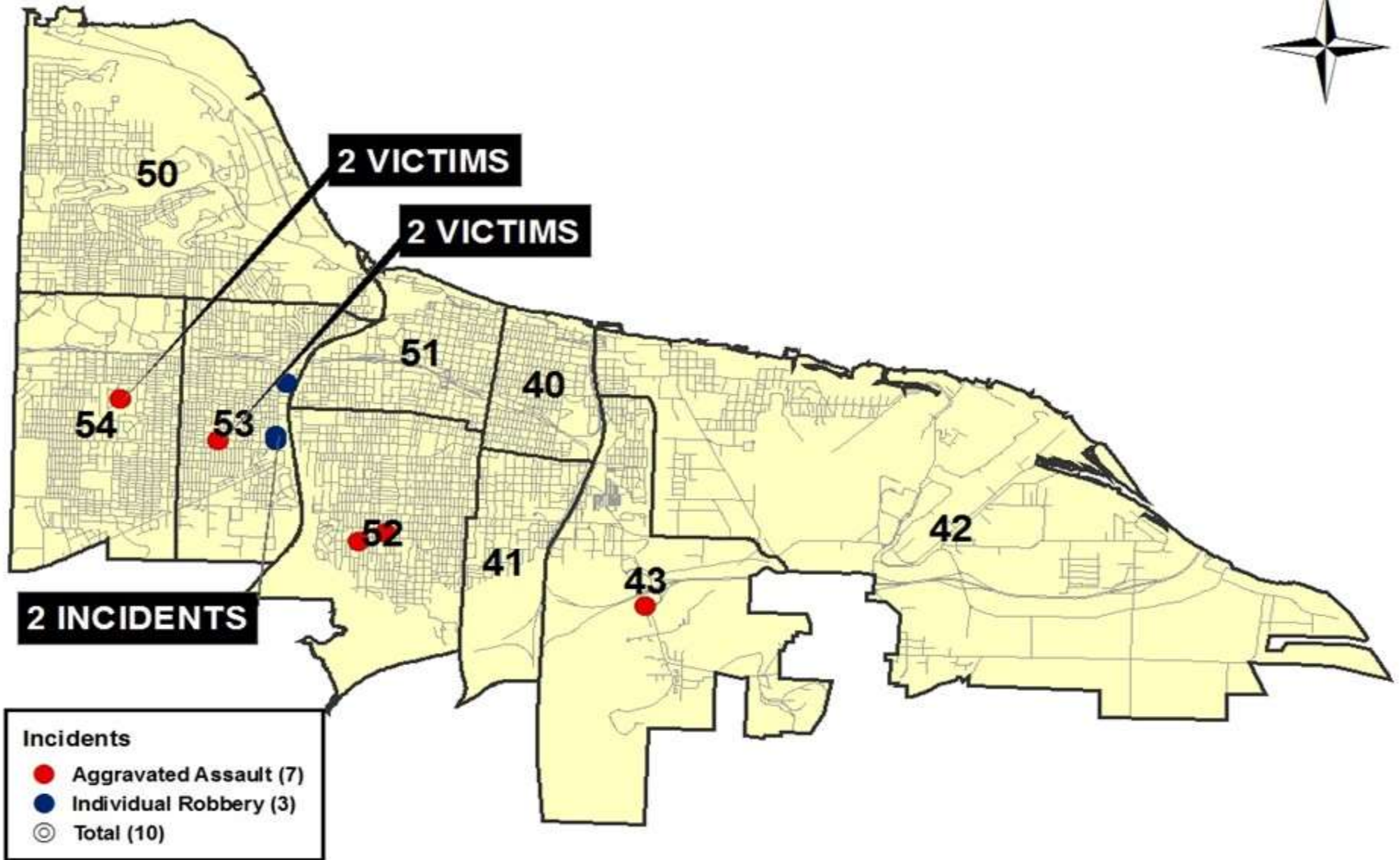
DT Division Number of Part I Offenses - Last 16 Weeks



Downtown

VIOLENT CRIME

Dec 5 - 11 2017

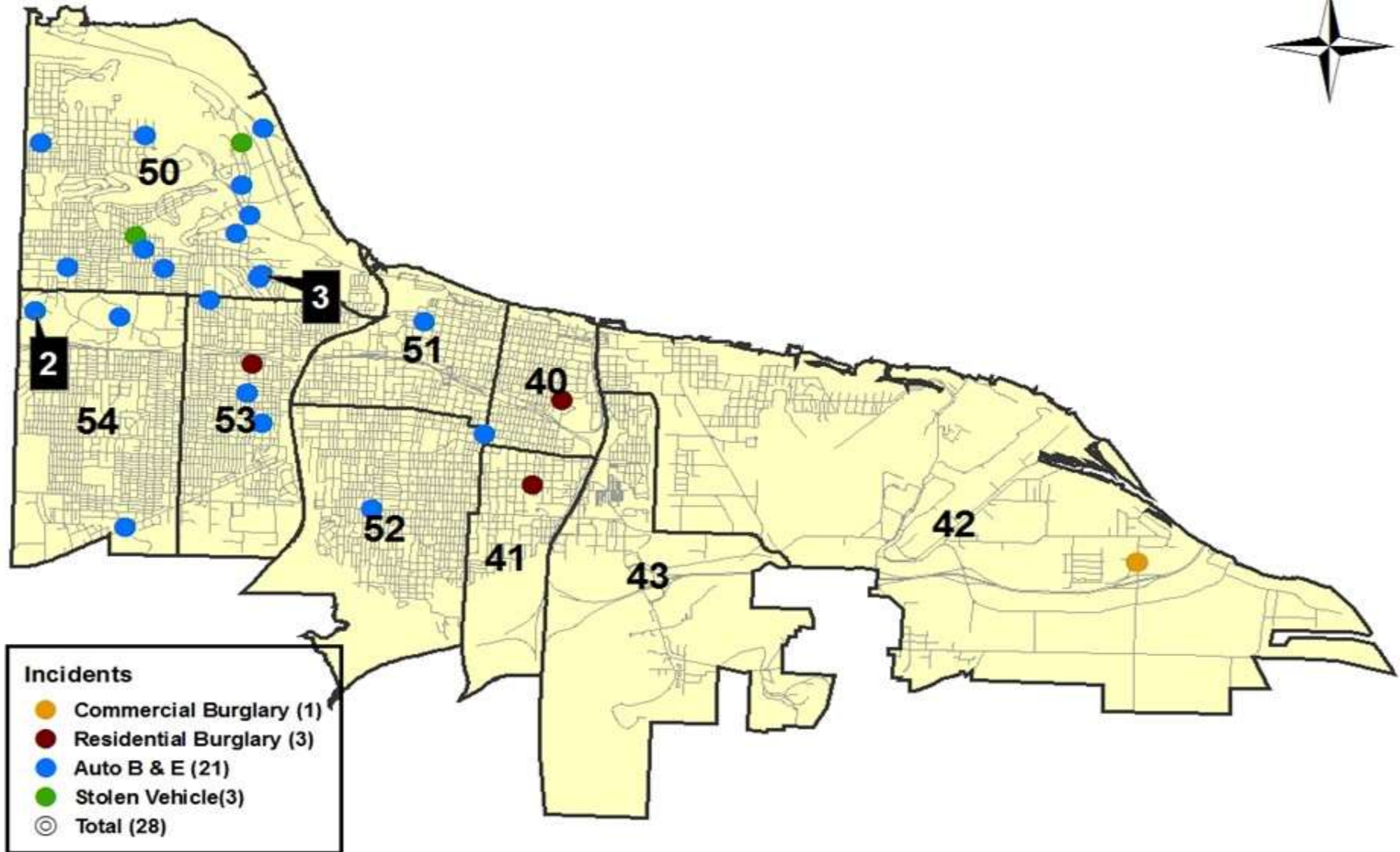


Dec. 14 2017

Downtown

PROPERTY CRIME

Dec 5 - 11 2017



Dec. 14 2017

Part I Offense Comparison - Northwest

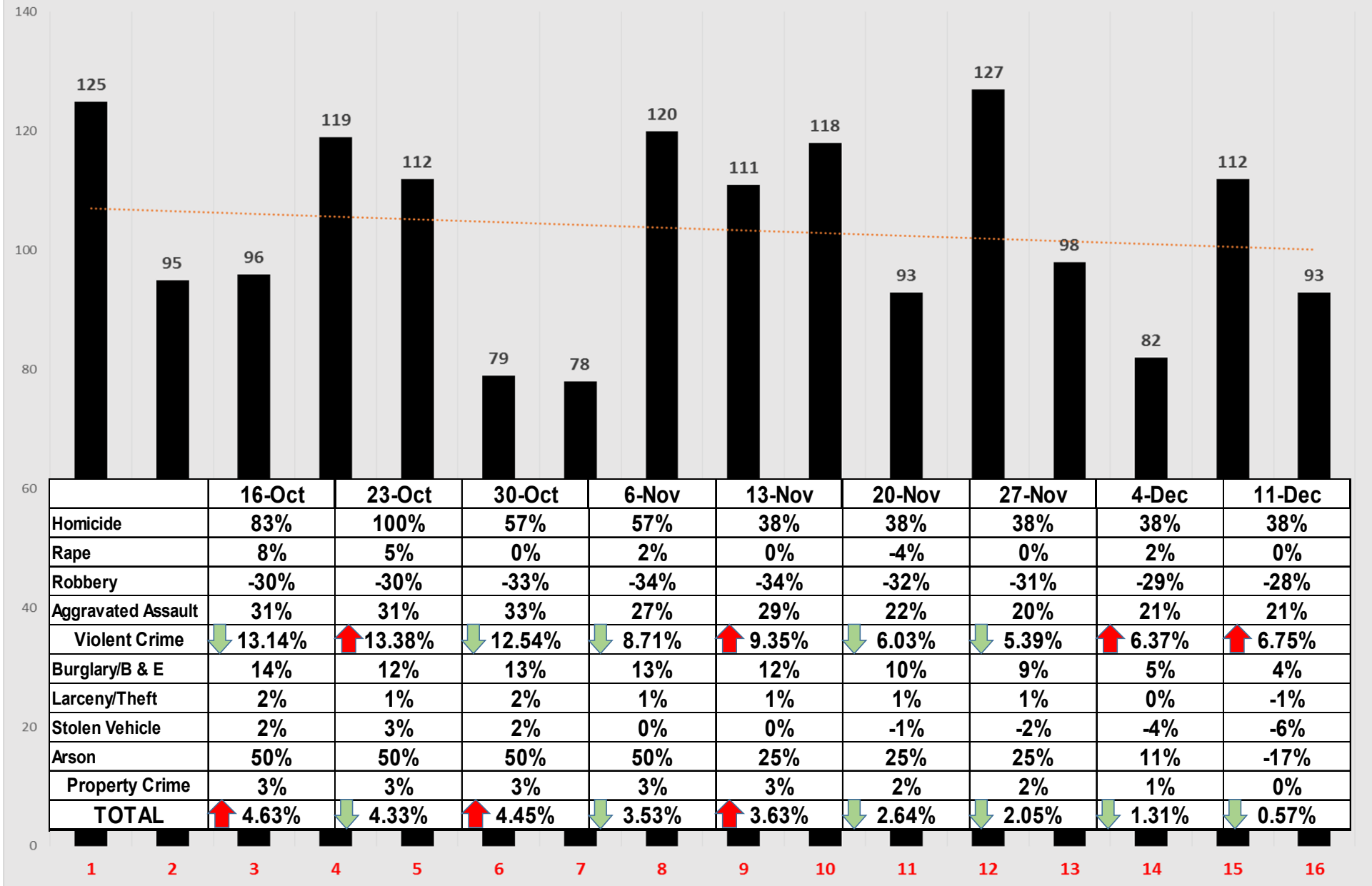
Jan 1 - December 11 2017 v 2016

PART I INCIDENT	NW		CHANGE		YTD 2017 - BY DISTRICT							
	2017	2016	NUMBER	PERCENT	60	61	62	63	64	70	71	72
Homicide	11	8	3	38%	1	0	3	0	5	1	1	0
Rape	47	47	0	0%	2	5	6	4	20	4	4	2
Robbery	168	233	-65	-28%	16	21	24	28	40	18	16	5
Aggravated Assault	676	557	119	21%	39	85	137	62	239	51	38	25
Violent Crime	902	845	57	7%	58	111	170	94	304	74	59	32
Burglary/B&E	852	822	30	4%	104	55	81	127	173	99	145	68
Larceny/Theft	4622	4647	-25	-1%	624	303	328	577	1004	507	814	465
Stolen Vehicle	379	403	-24	-6%	49	29	41	67	67	35	57	34
Arson	10	12	-2	-17%	2	1	1	3	1	1	1	0
Property Crime	5853	5872	-19	0%	777	387	450	771	1244	641	1016	567
TOTAL	6755	6717	38	0.57%	835	498	620	865	1548	715	1075	599

These figures are based on offenses reported to LRPD and are retrieved from the Department's Records Management System.

The figures may include some Offenses that may be reclassified after further investigation

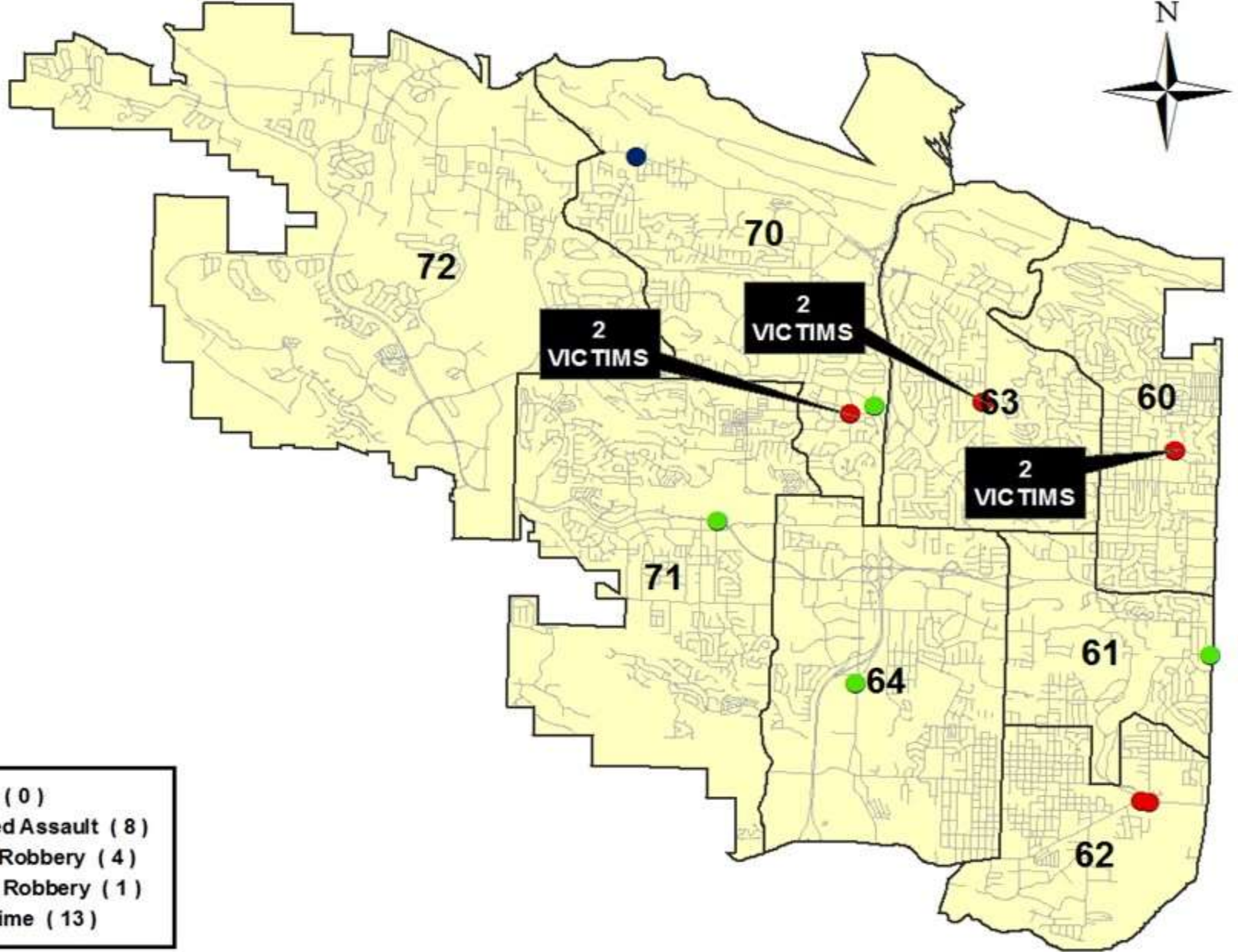
NW Division Number of Part Offenses - Last 16 Weeks 2016



Northwest

VIOLENT CRIME

Dec 5 - 11 2017



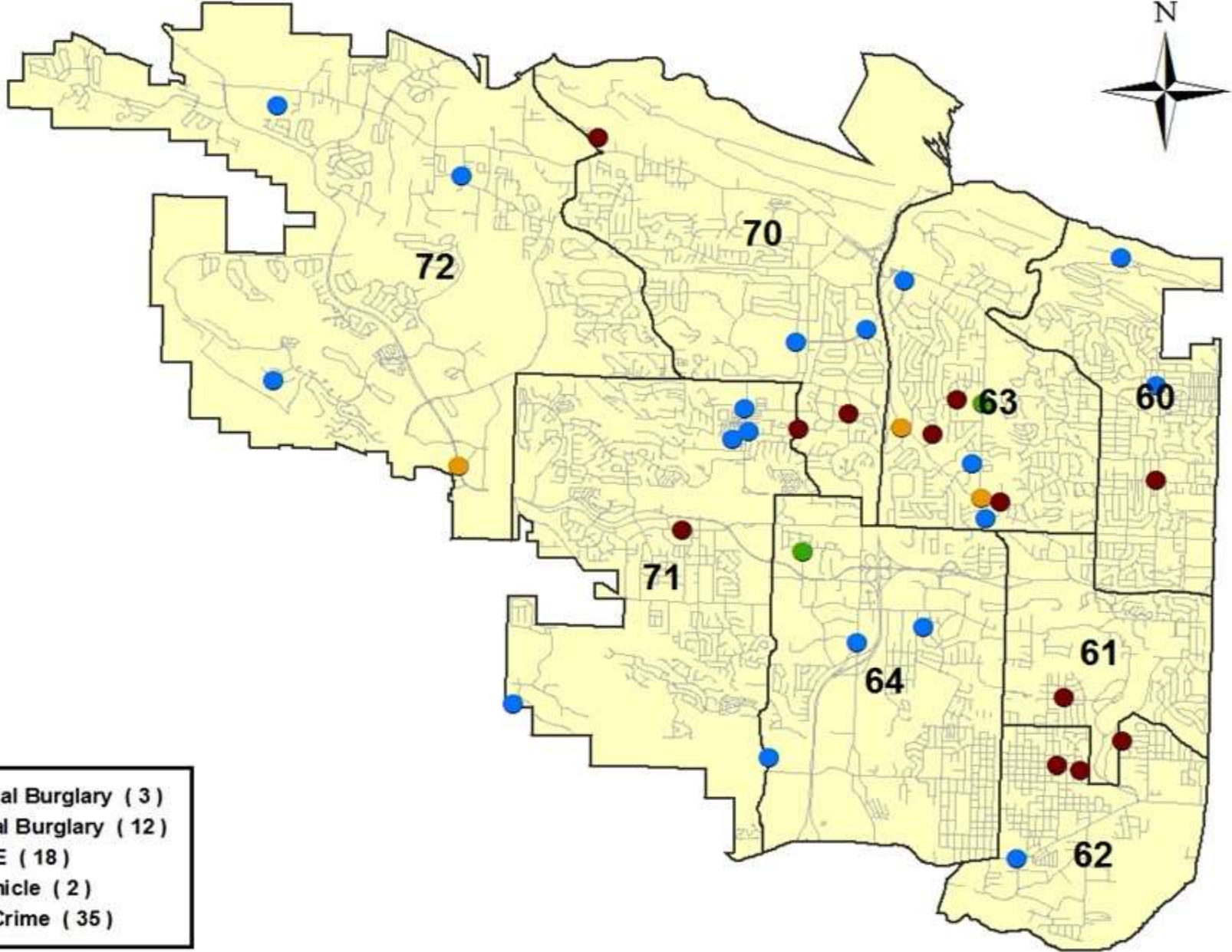
- Homicide (0)
- Aggravated Assault (8)
- Business Robbery (4)
- Individual Robbery (1)
- ⊙ Violent Crime (13)

Dec. 14 2017

Northwest

PROPERTY CRIME

Dec 5 - 11 2017



- Commercial Burglary (3)
- Residential Burglary (12)
- Auto B & E (18)
- Stolen Vehicle (2)
- ◎ Property Crime (35)

Dec. 14 2017

Part I Offense Comparison - Southwest

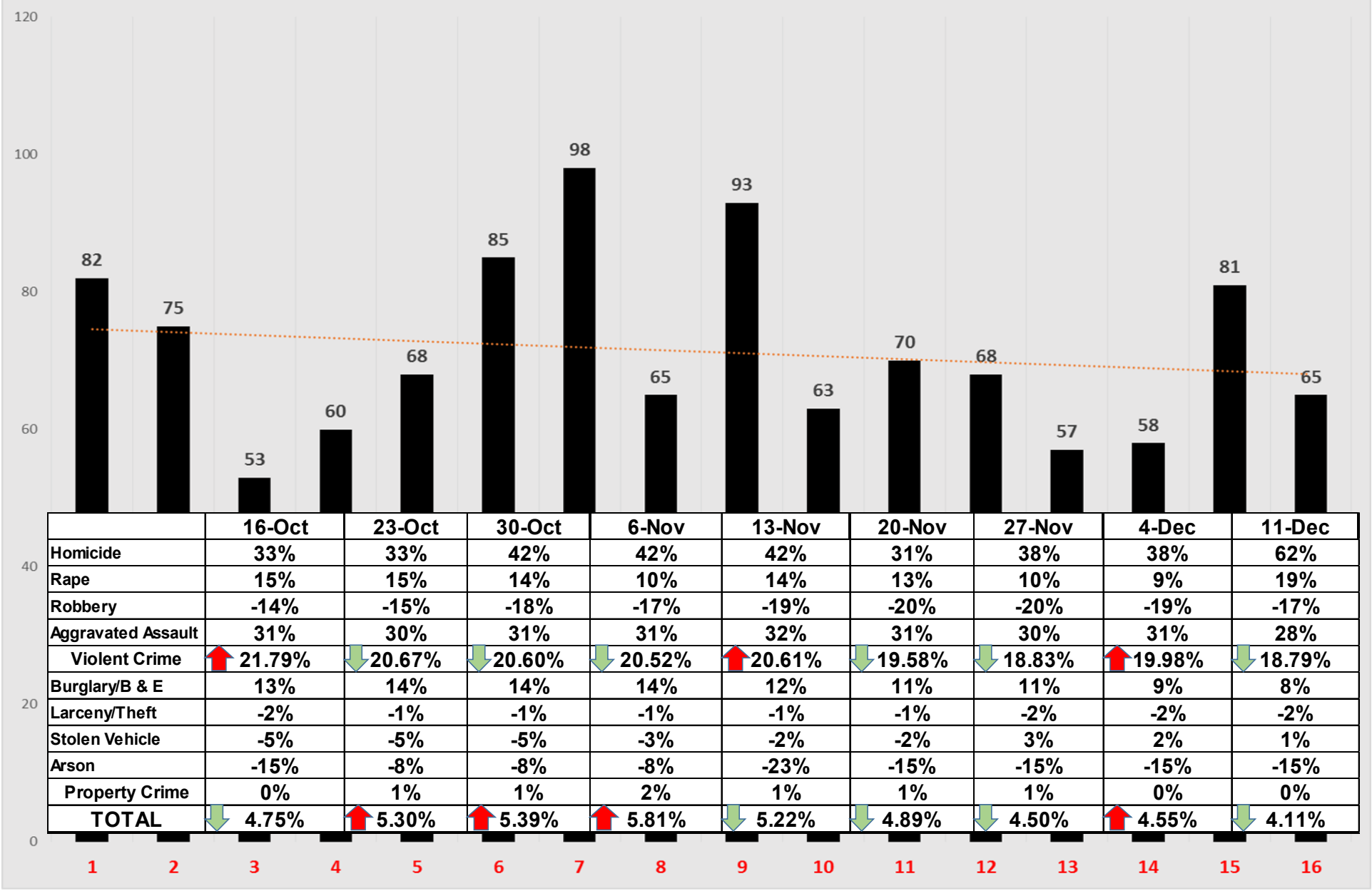
Jan 1 - December 11 2017 v 2016

PART I INCIDENT	SW		CHANGE		YTD 2017 - BY DISTRICT						
	2017	2016	NUMBER	PERCENT	80	81	82	90	91	92	93
Homicide	21	13	8	62%	1	10	1	2	3	0	4
Rape	38	32	6	19%	2	12	8	5	6	0	5
Robbery	147	177	-30	-17%	14	48	28	18	21	3	15
Aggravated Assault	812	635	177	28%	89	274	129	94	165	16	45
Violent Crime	1018	857	161	19%	106	344	166	119	195	19	69
Burglary/B&E	674	624	50	8%	65	198	122	86	131	16	56
Larceny/Theft	2212	2259	-47	-2%	251	503	326	342	397	61	332
Stolen Vehicle	326	323	3	1%	41	63	46	75	64	5	32
Arson	11	13	-2	-15%	2	2	3	3	1	0	0
Property Crime	3212	3206	6	0%	357	764	494	503	592	82	420
TOTAL	4230	4063	167	4.11%	463	1108	660	622	787	101	489

These figures are based on offenses reported to LRPD and are retrieved from the Department's Records Management System.

The figures may include some Offenses that may be reclassified after further investigation

SW Division Number of Part I Offenses - Last 16 Weeks 2017



Southwest

VIOLENT CRIME

Dec 5 - 11 2017

