

L.R.P.D.

# COMPSTAT

May 24 2018



*The  
Badge Of  
Honor*



**LITTLE ROCK POLICE DEPARTMENT**

May 24 2018

## **What is COMPSTAT?**

COMPSTAT stands for Comparative Statistics. In a weekly meeting of police command staff, divisional supervisors and other personnel, all parties discuss recent Part I criminal activity and propose strategies to address the situation.

Each meeting covers a three week period, and rotates between the three patrol divisions – Downtown, Northwest, and Southwest. All three divisions provide maps tracking activity in seven different crime types, but only one division presents per week.

Other divisions also report – Special Operations Division, Special Investigations Division, Major Crimes Division, and the Headquarters Division – Communications Section. Those divisions reports are not included in this report because they may contain sensitive law enforcement information.

## **Glossary and Notes**

**Part I Incident** - The FBI standard for its *Crime in the United States* report, issued each fall. Part I violent crimes are murder or non-negligent homicide, rape, robbery and aggravated assault. Part I property crimes are burglary, larceny, and auto theft.

*\*In our COMPSTAT report, we only include maps of non-domestic aggravated assault incidents, but all aggravated assault incidents are included on the charts.*

## Part I Offense Comparison City Wide

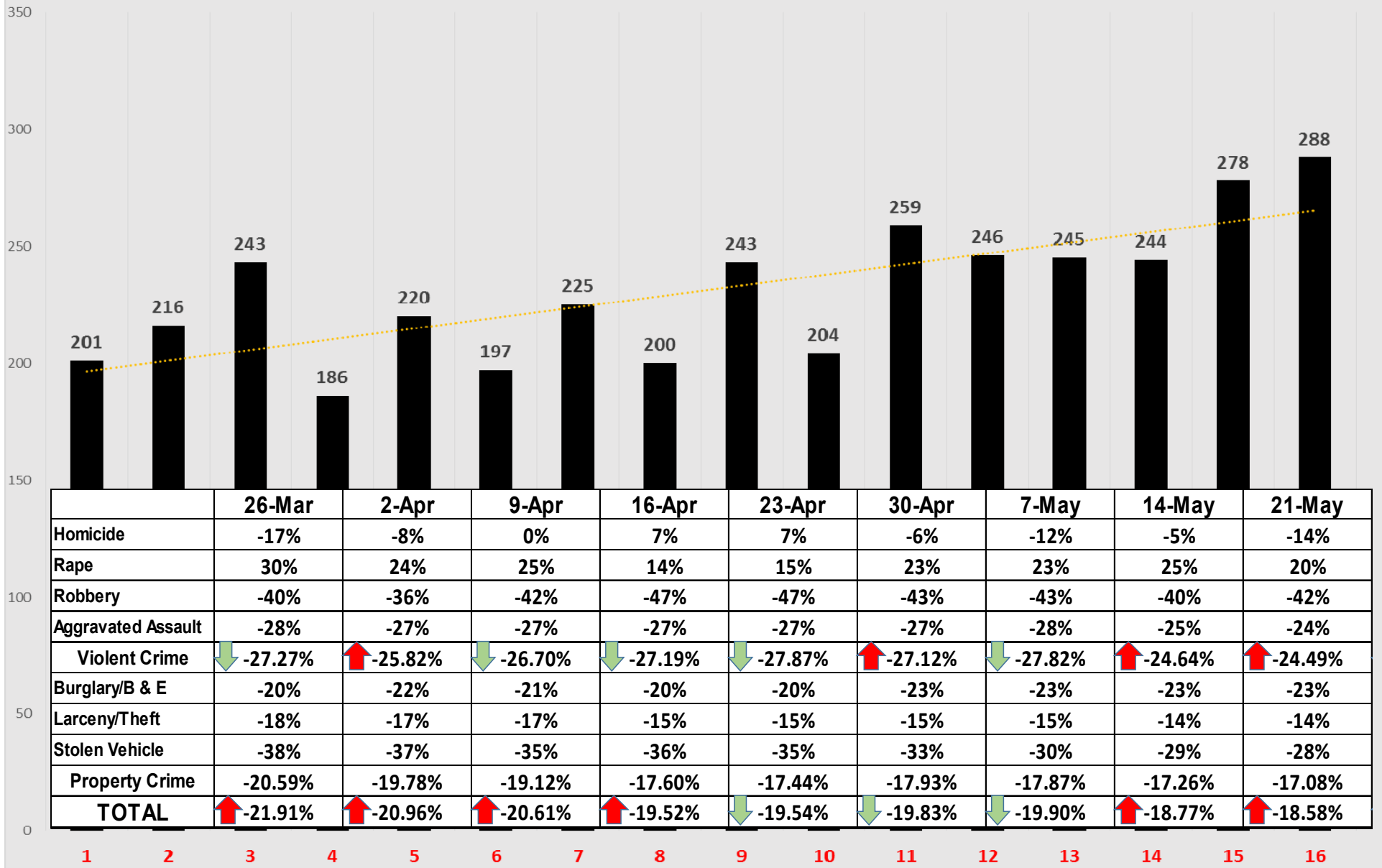
Jan 1 - May 21 2018 v 2017 - with 2-year avg.

PART I INCIDENT	TOTAL		2018 v 2017	Last 2 Years		2018 by Division		
	2018	2017	% change	Avg.	% change	12th ST	NW	SW
Homicide	18	21	-14%	16.0	13%	8	5	5
Rape	73	61	20%	59.0	24%	30	23	20
Robbery	115	198	-42%	215.5	-47%	45	40	30
Aggravated Assault	802	1055	-24%	929.5	-14%	355	182	265
Violent Crime	1008	1335	-24%	1220.0	-17%	438	250	320
Burglary/B & E	700	910	-23%	814.0	-14%	239	215	246
Larceny/Theft	3322	3881	-14%	3878.5	-14%	1147	1407	768
Stolen Vehicle	339	468	-28%	444.5	-24%	114	114	111
Property Crime	4361	5259	-17%	5137.0	-15%	1500	1736	1125
<b>TOTAL</b>	<b>5369</b>	<b>6594</b>	<b>-18.58%</b>	<b>6357</b>	<b>-15.54%</b>	<b>1938</b>	<b>1986</b>	<b>1445</b>
Percentage of Total YTD - by Division						36.10%	36.99%	26.91%

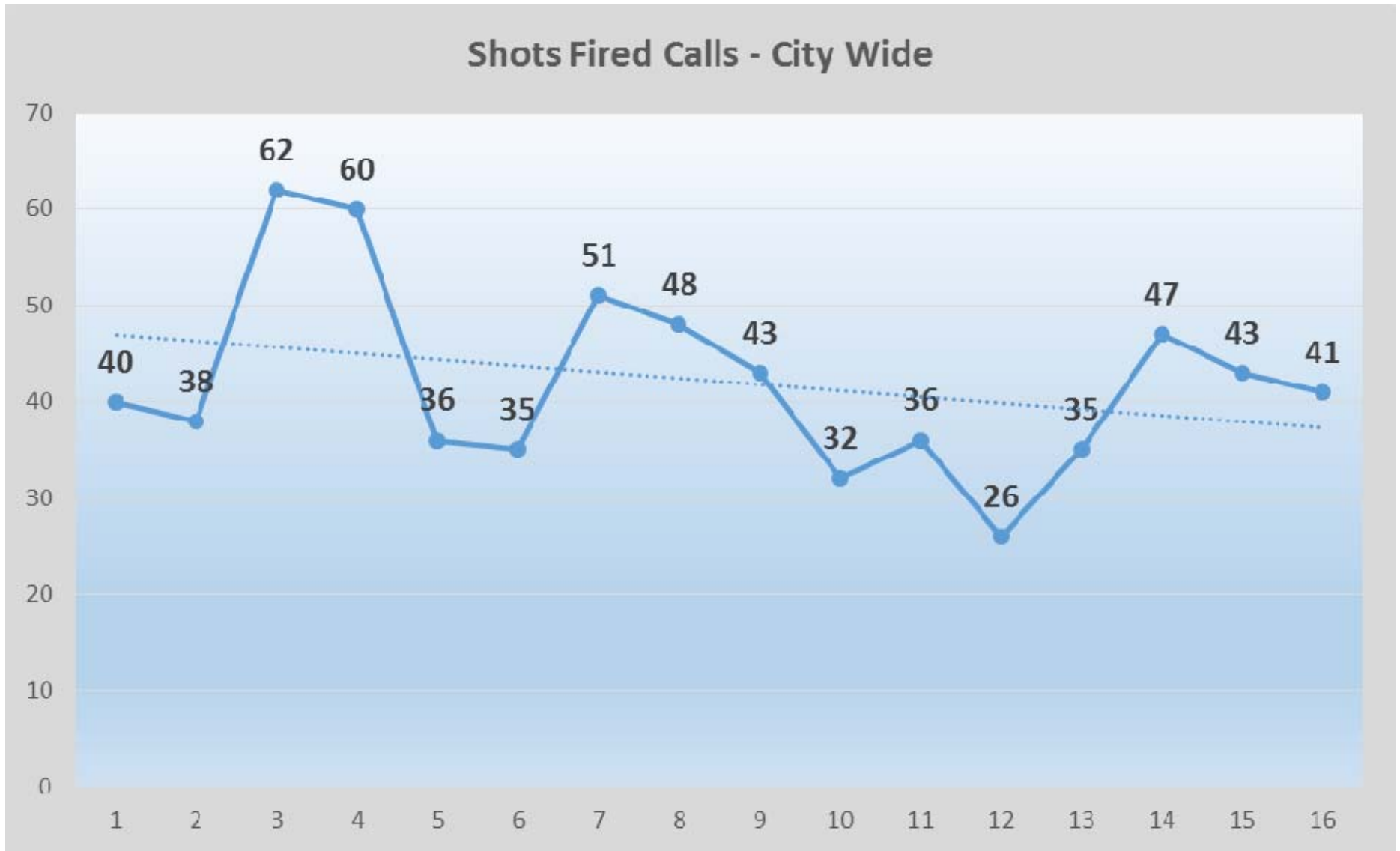
These figures are based on offenses reported to LRPD and are retrieved from the Department's Records Management System.

The figures may include some offenses that may be reclassified after further investigation.

City Wide Number of Part I Offenses - Last 16 Weeks



# Last 16 Weeks – Shots Fired Calls



**Part I Offense Comparison - 12th St. Station Division**

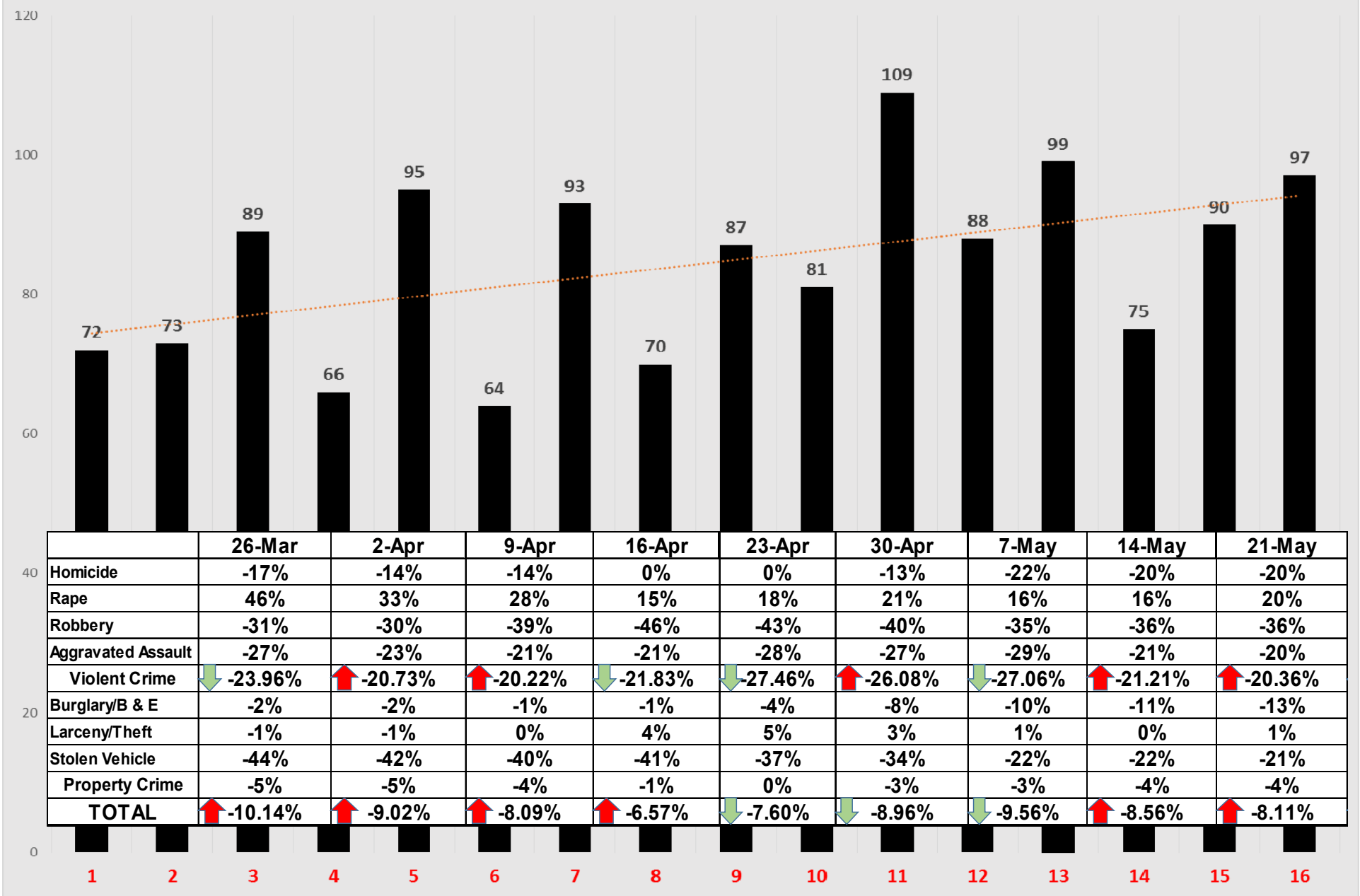
**Jan 1 - May 21 2018 v 2017 - with 2-year avg.**

PART I INCIDENT	12th ST		2018 v 2017	Last 2 Years		YTD 2018 - BY DISTRICT								
	2018	2017	% change	Avg.	% change	40	41	42	43	50	51	52	53	54
Homicide	8	10	-20%	7.5	7%	0	0	0	2	0	0	2	2	2
Rape	30	25	20%	25.5	18%	2	3	2	2	1	9	2	4	5
Robbery	45	70	-36%	75.5	-40%	7	4	0	2	3	3	6	8	12
Aggravated Assault	355	445	-20%	392.5	-10%	14	17	27	20	5	23	85	52	112
Violent Crime	438	550	-20%	501.0	-13%	23	24	29	26	9	35	95	66	131
Burglary/B&E	239	274	-13%	235.0	2%	30	22	17	11	30	13	51	28	37
Larceny/Theft	1147	1141	1%	1139.5	1%	195	111	55	53	204	88	135	128	178
Stolen Vehicle	114	144	-21%	139.5	-18%	11	3	13	5	14	7	18	21	22
Property Crime	1500	1559	-4%	1514.0	-1%	236	136	85	69	248	108	204	177	237
<b>TOTAL</b>	<b>1938</b>	<b>2109</b>	<b>-8.11%</b>	<b>2015.0</b>	<b>-4%</b>	<b>259</b>	<b>160</b>	<b>114</b>	<b>95</b>	<b>257</b>	<b>143</b>	<b>299</b>	<b>243</b>	<b>368</b>

These figures are based on offenses reported to LRPD and are retrieved from the Department's Records Management System.

The figures may include some offenses that may be reclassified after further investigation.

### 12th St. Station Division Number of Part I Offenses - Last 16 Weeks





# Last 16 Weeks – Shots Fired Calls

## Shots Fired Calls - 12th St. Station

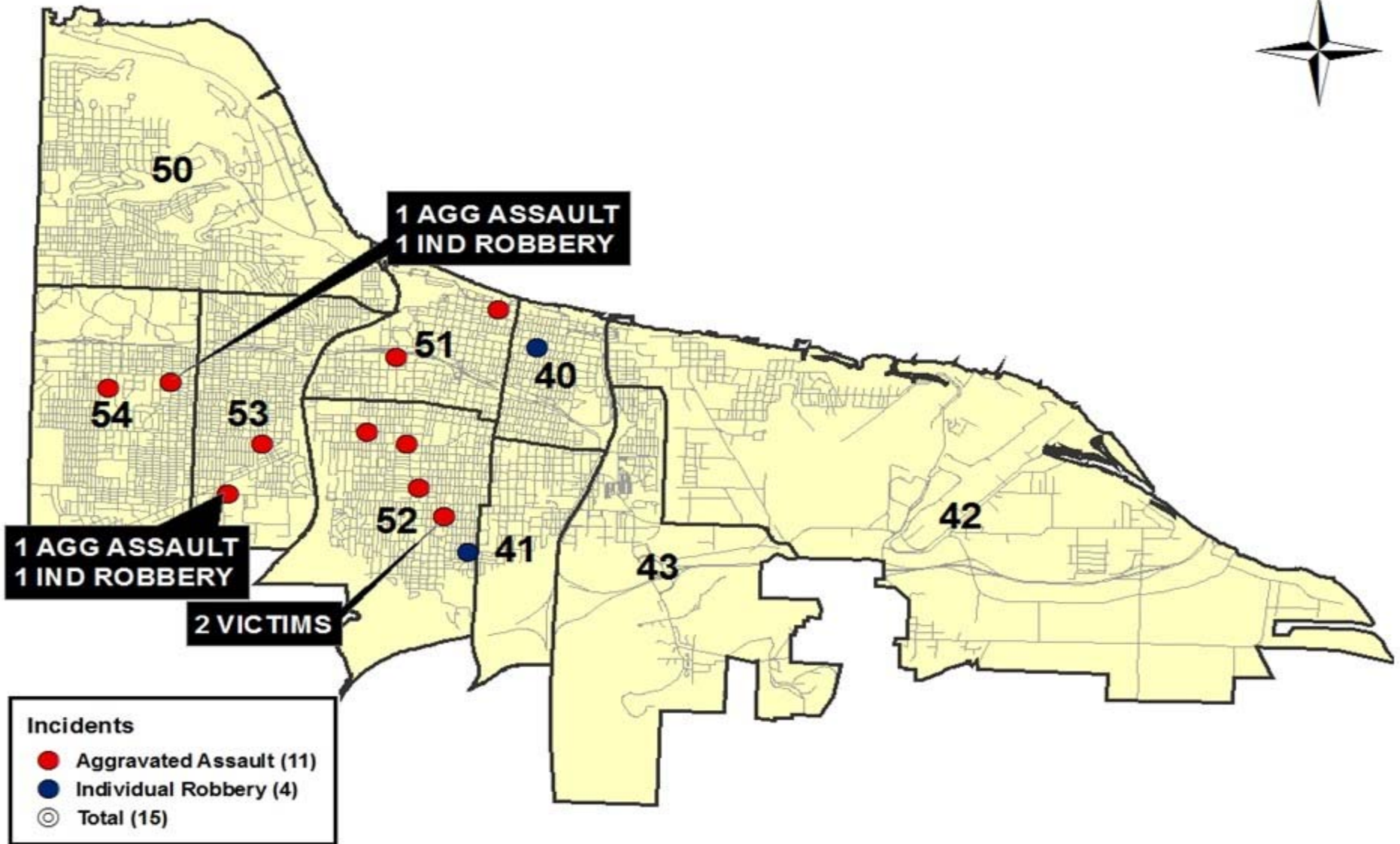


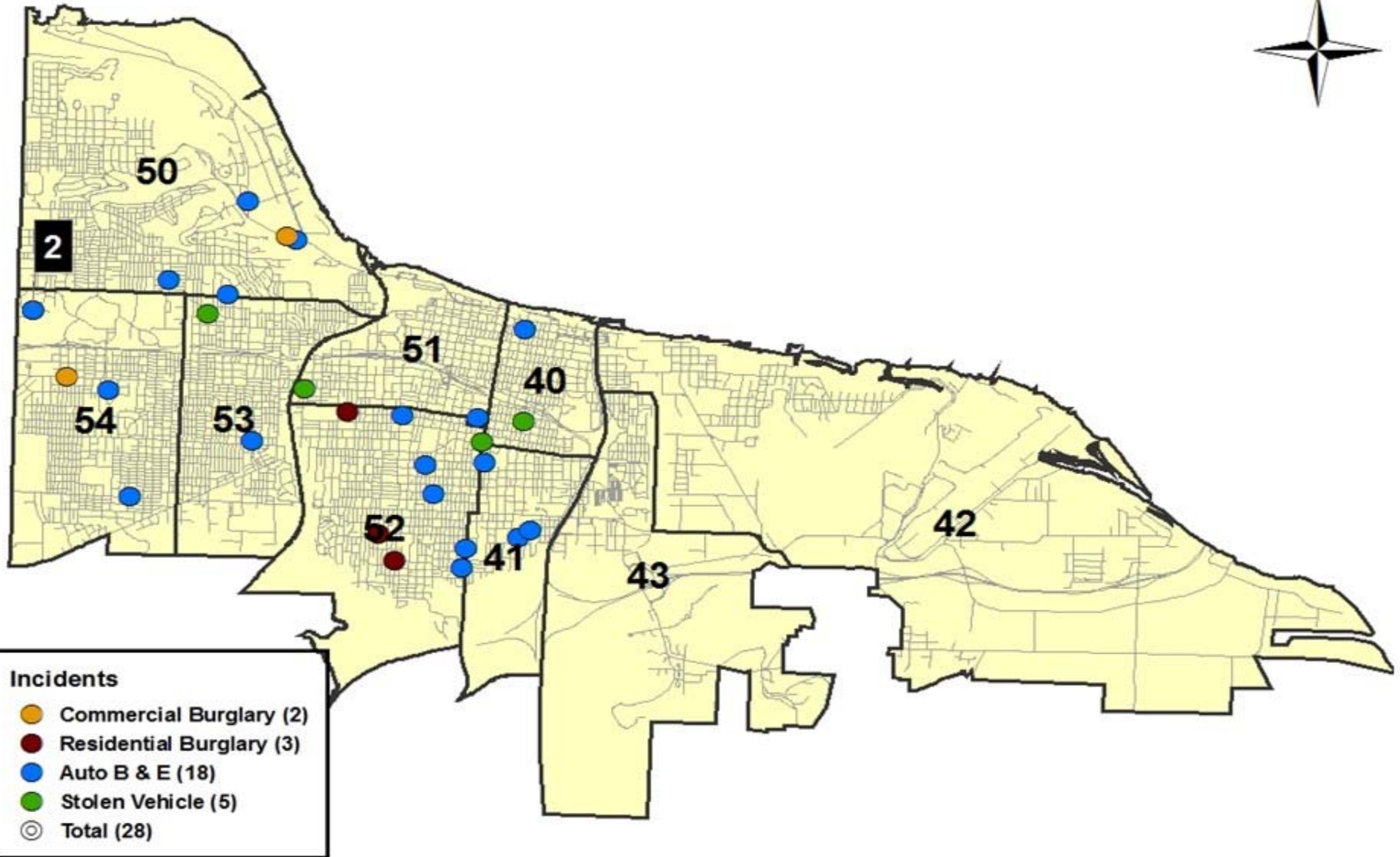


# 12th Street Station

# VIOLENT CRIME

May 15 - 21 2018





**Part I Offense Comparison - Northwest**

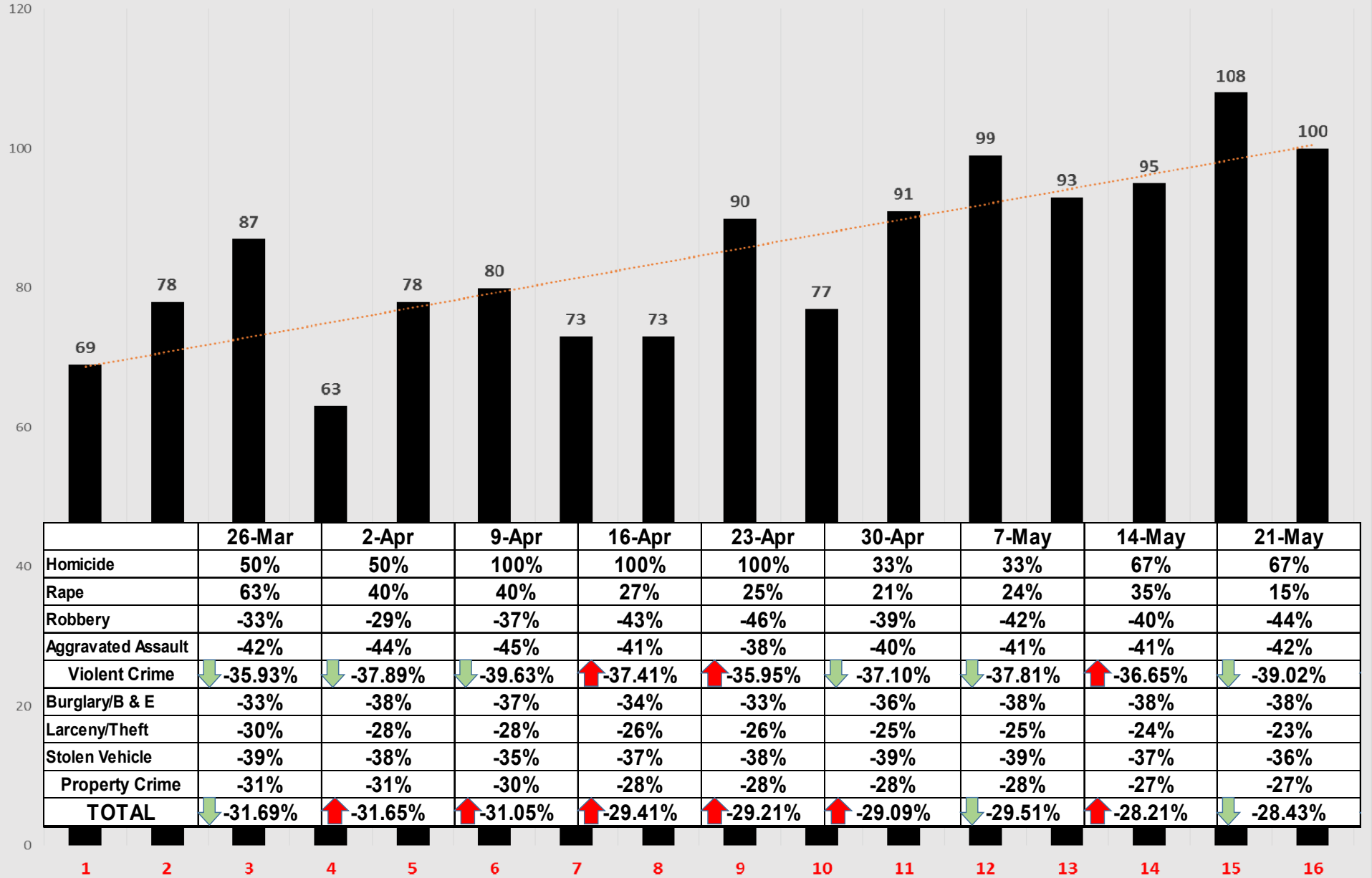
**Jan 1 - May 21 2018 v 2017 - with 2-year avg.**

PART I INCIDENT	NW		2018 v 2017	Last 2 Years		YTD 2018 - BY DISTRICT							
	2018	2017	% change	Avg.	% change	60	61	62	63	64	70	71	72
Homicide	5	3	67%	2.0	150%	0	1	4	0	0	0	0	0
Rape	23	20	15%	19.5	18%	3	3	1	3	10	1	2	0
Robbery	40	71	-44%	82.0	-51%	1	3	15	3	8	5	2	3
Aggravated Assault	182	316	-42%	264.5	-31%	22	24	39	18	42	7	27	3
Violent Crime	250	410	-39%	368.0	-32%	26	31	59	24	60	13	31	6
Burglary/B&E	215	349	-38%	311.5	-31%	31	14	36	27	44	9	35	19
Larceny/Theft	1407	1839	-23%	1827.5	-23%	208	117	107	148	312	134	253	128
Stolen Vehicle	114	177	-36%	166.0	-31%	11	14	12	15	30	8	16	8
Property Crime	1736	2365	-27%	2305.0	-25%	250	145	155	190	386	151	304	155
<b>TOTAL</b>	<b>1986</b>	<b>2775</b>	<b>-28.43%</b>	<b>2673.0</b>	<b>-26%</b>	<b>276</b>	<b>176</b>	<b>214</b>	<b>214</b>	<b>446</b>	<b>164</b>	<b>335</b>	<b>161</b>

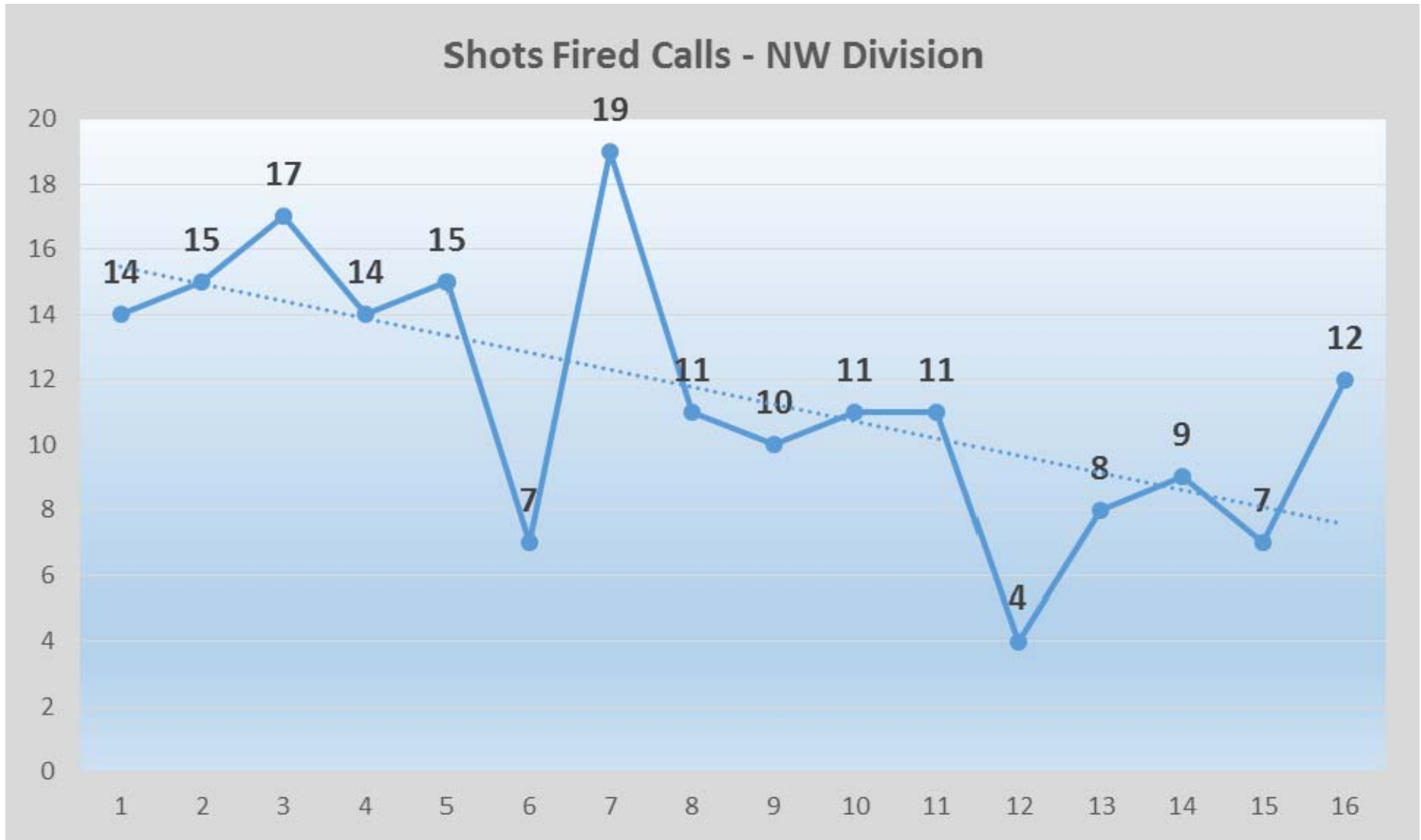
These figures are based on offenses reported to LRPD and are retrieved from the Department's Records Management System.

The figures may include some offenses that may be reclassified after further investigation.

### NW Division Number of Part Offenses - Last 16 Weeks



# Last 16 Weeks – Shots Fired Calls

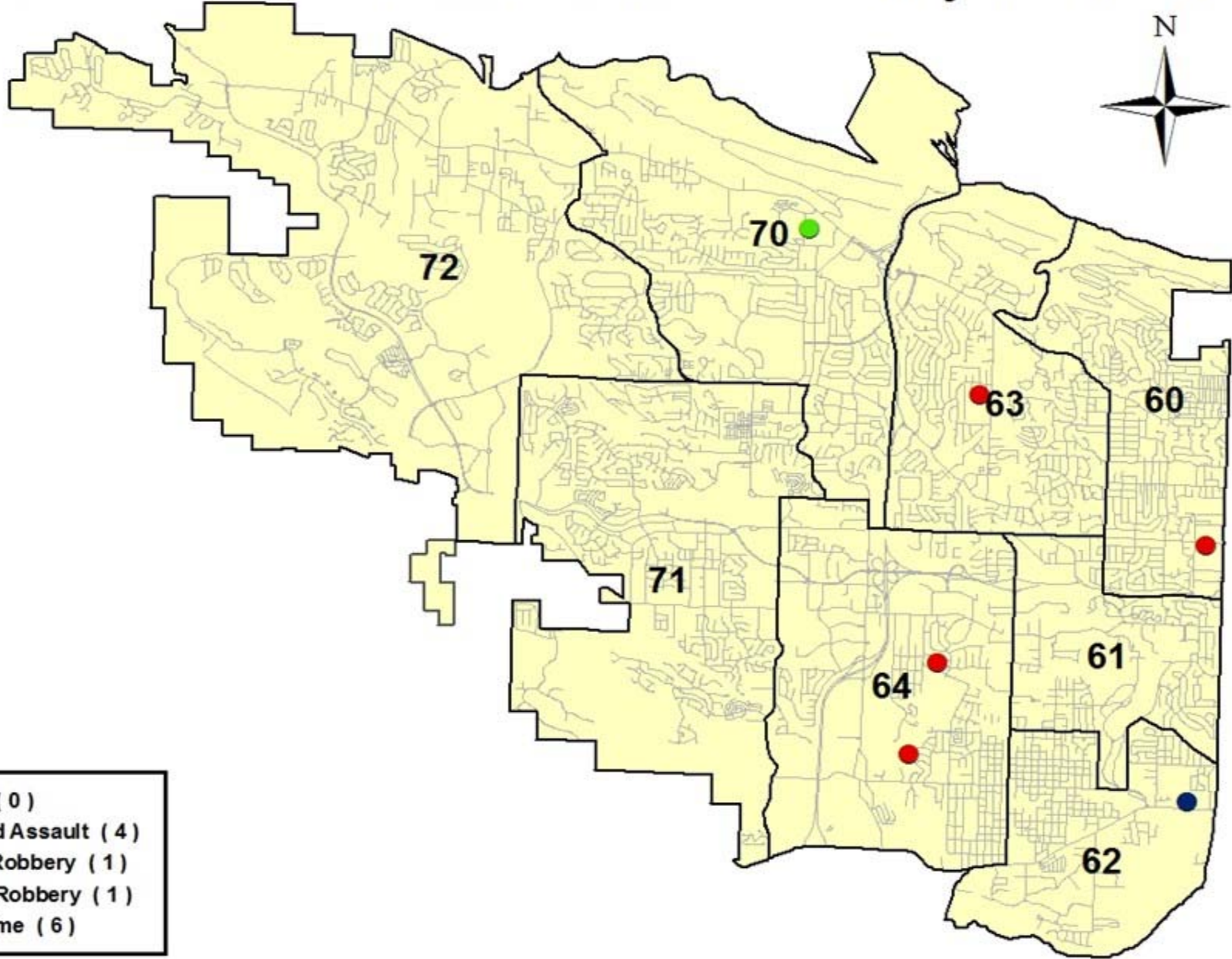




Northwest

# VIOLENT CRIME

May 15 - 21 2018



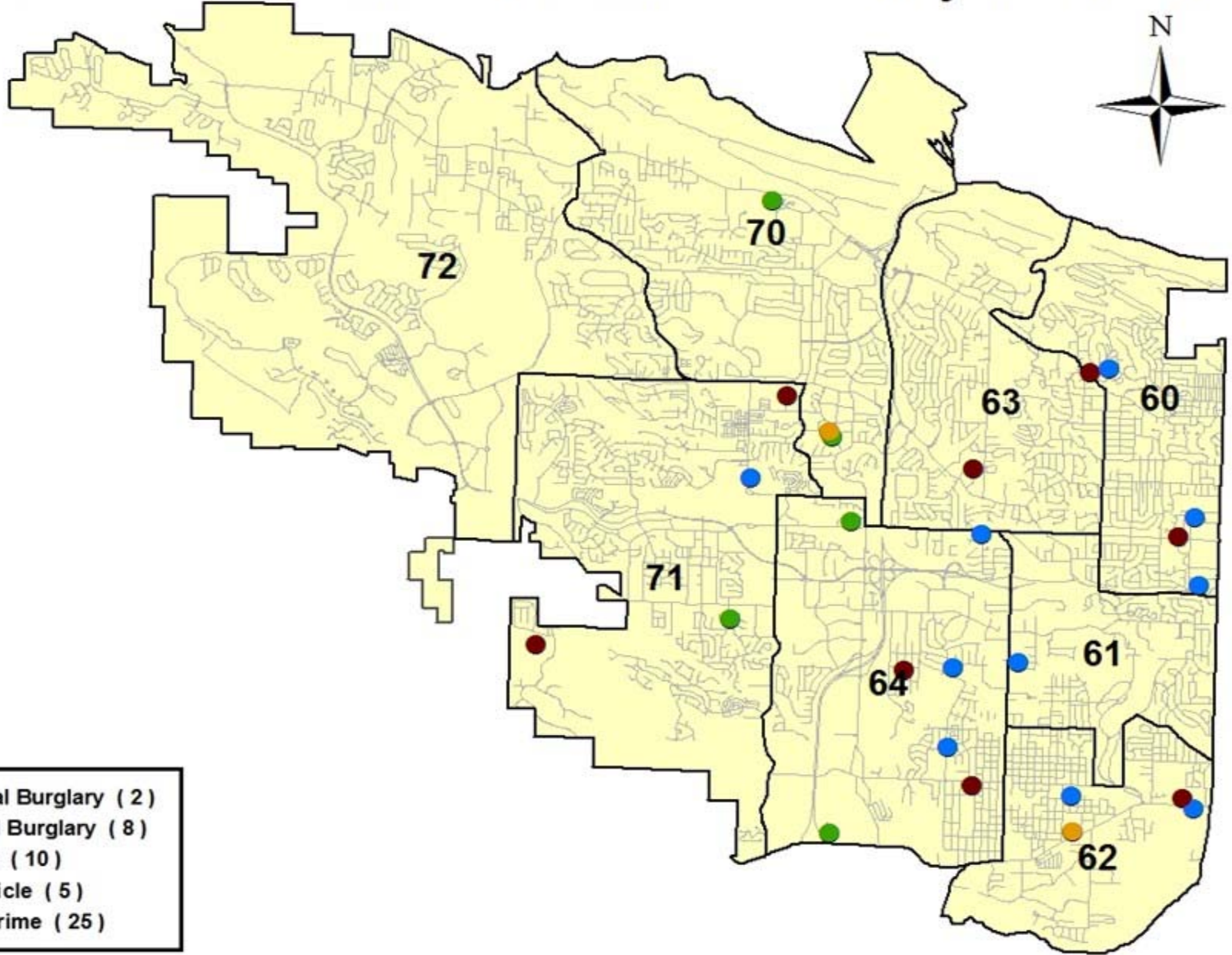
- Homicide ( 0 )
- Aggravated Assault ( 4 )
- Business Robbery ( 1 )
- Individual Robbery ( 1 )
- ⊙ Violent Crime ( 6 )

May 24 2018

Northwest

# PROPERTY CRIME

May 15 - 21 2018



- Commercial Burglary ( 2 )
- Residential Burglary ( 8 )
- Auto B & E ( 10 )
- Stolen Vehicle ( 5 )
- Property Crime ( 25 )

May 24 2018



## Part I Offense Comparison - Southwest

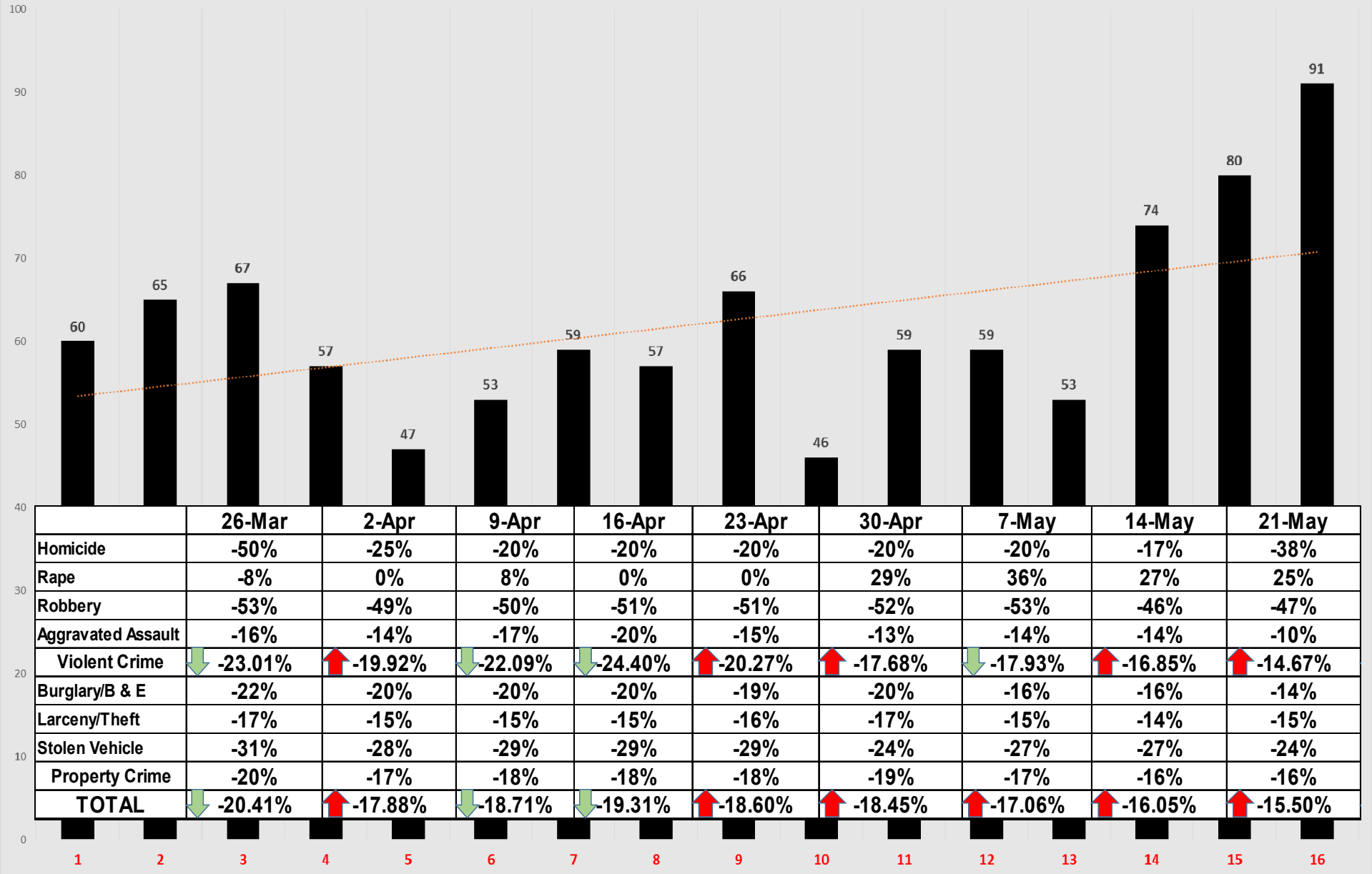
Jan 1 - May 21 2018 v 2017 - with 2-year avg.

PART I INCIDENT	SW		2018 v 2017	Last 2 Years		YTD 2018 - BY DISTRICT						
	2018	2017	% change	Avg.	% change	80	81	82	90	91	92	93
Homicide	5	8	-38%	6.5	-23%	1	0	0	2	0	0	2
Rape	20	16	25%	14.0	43%	2	5	3	3	3	0	4
Robbery	30	57	-47%	58.0	-48%	4	8	6	0	8	1	3
Aggravated Assault	265	294	-10%	272.5	-3%	32	67	46	37	59	6	18
Violent Crime	320	375	-15%	351.0	-9%	39	80	55	42	70	7	27
Burglary/B&E	246	287	-14%	267.5	-8%	22	65	34	47	47	5	26
Larceny/Theft	768	901	-15%	911.5	-16%	101	191	101	93	129	18	135
Stolen Vehicle	111	147	-24%	139.0	-20%	11	23	13	19	22	5	18
Property Crime	1125	1335	-16%	1318.0	-15%	134	279	148	159	198	28	179
<b>TOTAL</b>	<b>1445</b>	<b>1710</b>	<b>-15.50%</b>	<b>1669.0</b>	<b>-13%</b>	<b>173</b>	<b>359</b>	<b>203</b>	<b>201</b>	<b>268</b>	<b>35</b>	<b>206</b>

These figures are based on offenses reported to LRPD and are retrieved from the Department's Records Management System.

The figures may include some offenses that may be reclassified after further investigation.

SW Division Number of Part I Offenses - Last 16 Weeks



# Last 16 Weeks – Shots Fired Calls

