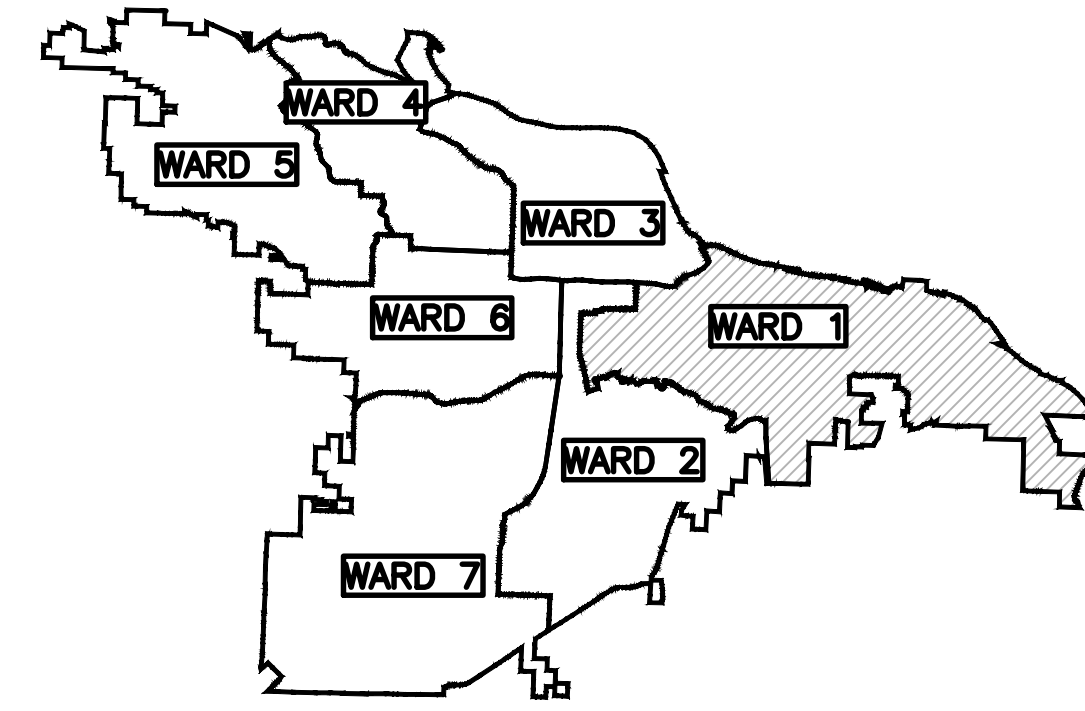
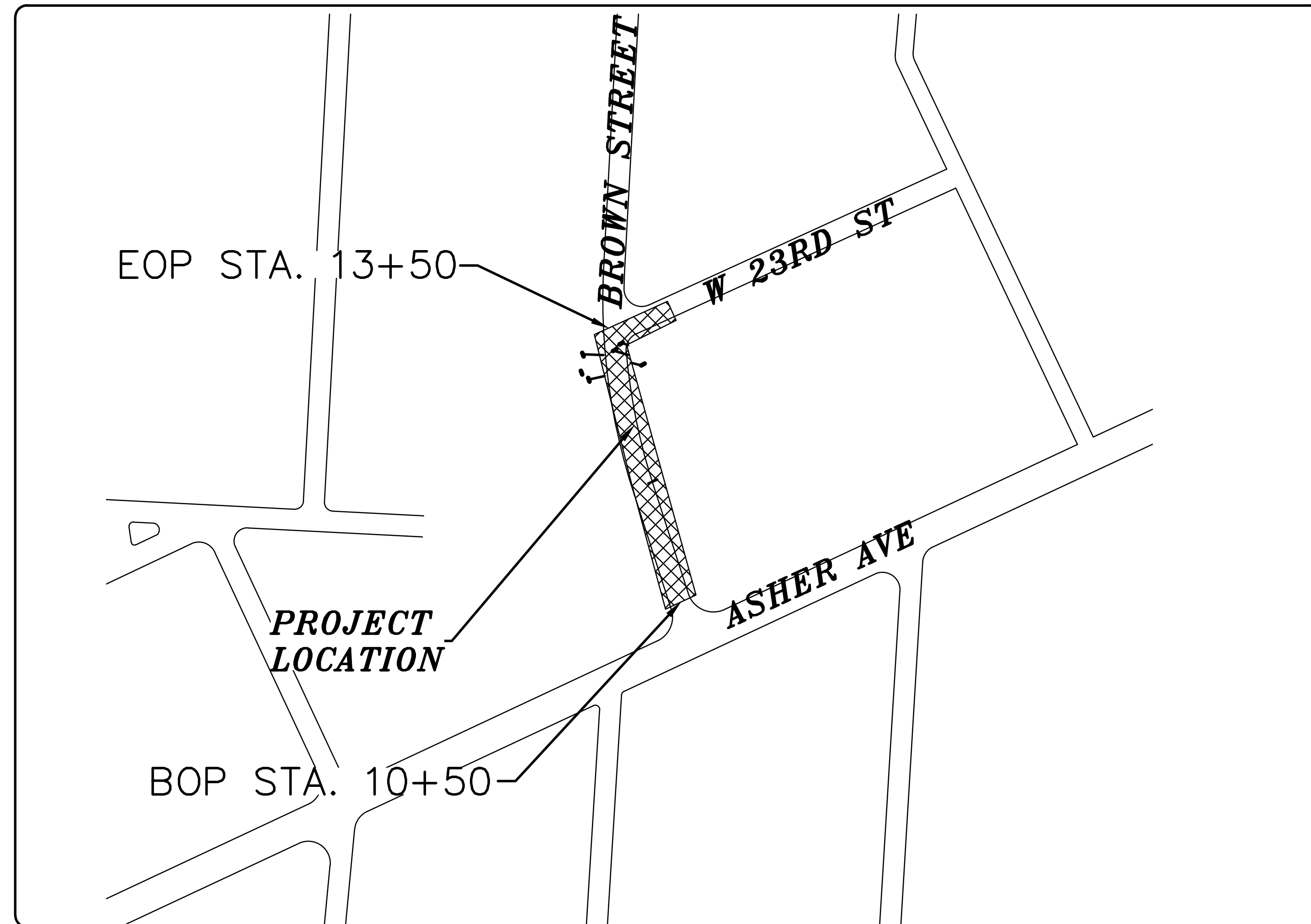


BROWN ST. IMPROVMENTS 16-1-ST70 BROWN ST. FROM 24TH TO ASHER



PROJECT LOCATION - WARD 1

SHEET NO	TITLE
C1	COVER SHEET
C2	LEGEND AND QUANTITIES
C3	BROWN STREET PLAN AND PROFILE
C4	23RD STREET PLAN AND PROFILE
C5	DRIVEWAY PLAN AND PROFILES
C6	DRIVEWAY PLAN AND PROFILES 2
C7	BROWN STREET CROSS SECTIONS
C8	BROWN STREET CROSS SECTIONS 2
C9	BROWN STREET CROSS SECTIONS 3
C10	23RD STREET CROSS SECTIONS
C11	EROSION CONTROL PLAN



DEPARTMENT OF PUBLIC WORKS
CIVIL ENGINEERING
701 WEST MARKHAM STREET
LITTLE ROCK, ARKANSAS 72201



REVISIONS	DATE

CITY OF LITTLE ROCK, ARKANSAS
BROWN ST. FROM 24TH TO ASHER
COVER SHEET

DEPARTMENT OF PUBLIC WORKS
CIVIL ENGINEERING
701 W. MARKHAM
LITTLE ROCK, ARKANSAS 72201

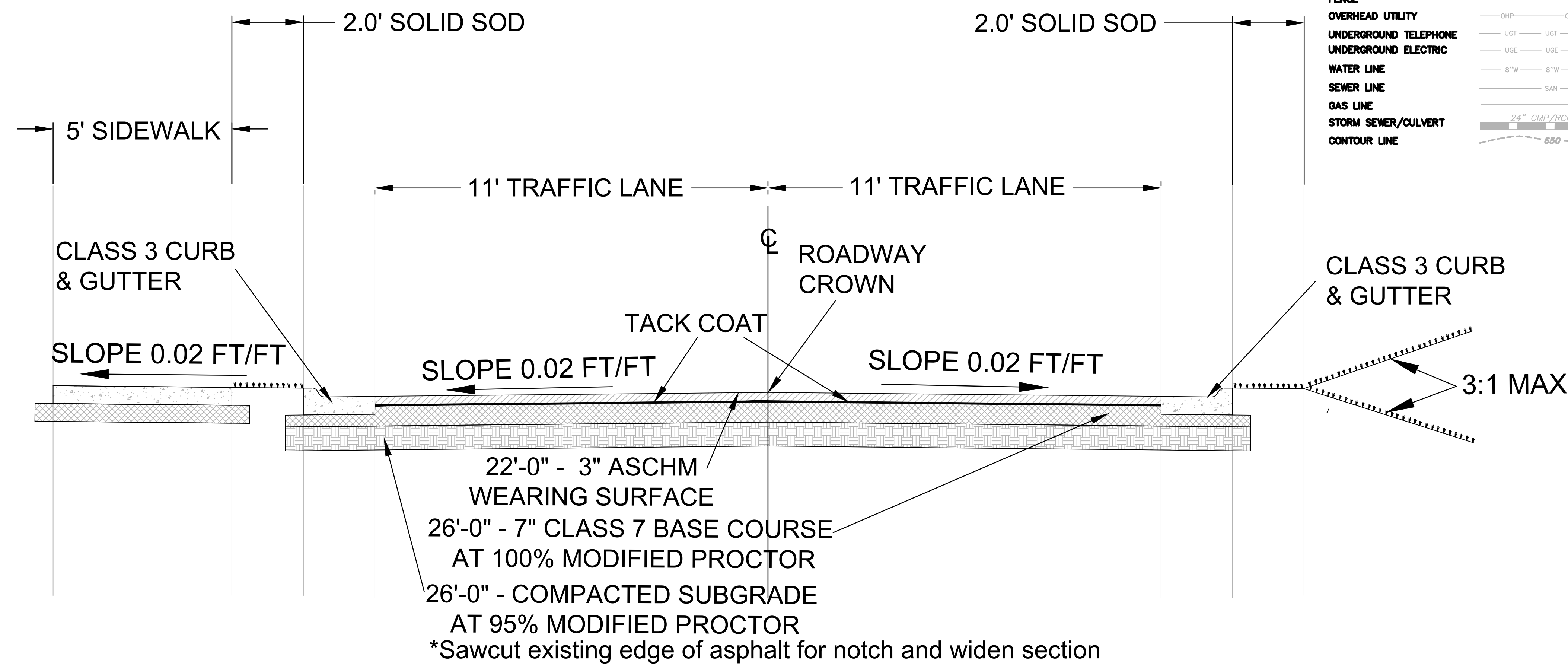


DRAWN BY	BY
DESIGNED	BK
CHECKED	BK
DATE	10-11-2017
SCALE	N.T.S.
PROJECT NO.	CLR 16-1-ST-70
SHEET NO.	C1

REVISIONS	DATE

ITEM NO.	ITEM DESCRIPTION	UNIT	QUANTITY
2.01	Site Preparation (includes mobilization)	LS	1
3.01	Unclassified Excavation	CY	93
3.06	Borrow Material	CY	0
6.01	ACHM Surface Course	TON	150
6.02	Class 7 Base (7")	TON	598
7.01	Concrete Driveway	SY	110
8.01	Curb and Gutter	LF	690
9.01	Sidewalk	SY	150
10.01	Curb Inlets With 3' Extension	EA	2
10.01	Curb Grate Inlet	EA	1
10.02	Junction Box	EA	1
13.18	18" Cross Drain	LF	41
24.01	Erosion Control Sediment Barrier Block	EA	4
24.01	Erosion Control Permanent Grassing	AC	0
24.01	Erosion Control Silt Fence	LF	44
24.01	Sod	SY	78

EXISTING	PROPOSED
IRON ROD	○ IR
PK NAIL	○ PK
R.R. SPIKE	○ RR(Sp)
CONC. MONUMENT	□ CM
WATER VALVE	⊗ WV
WATER METER	⊗ WM
FIRE HYDRANT	⊗ FH
GAS METER	⊗ GM
GAS VALVE	⊗ GV
CLEAN-OUT	○ CO
GUARD POST (BOLLARD)	● GP
SIGN POST	—
BENCHMARK	⊕
STORM SEWER MANHOLE	⊕
SANITARY SEWER MANHOLE	⊕
TELEPHONE MANHOLE	⊕
ELECTRIC MANHOLE	⊕
TELEPHONE BOX	⊕
ELECTRIC BOX	⊕
CABLE BOX	⊕
UTILITY POLE	⊕
GUY WIRE	—
LIGHT POLE	⊕
POST OR POLE (TYPE AS NOTED)	⊕
MAILBOX	⊕
DECIDUOUS TREE	⊕
EVERGREEN/CONIFEROUS TREE	⊕
BUSH	⊕
PROPERTY LINE	—
SETBACK LINE	—
EASEMENT LINE	—
CURB	—
FENCE	—
OVERHEAD UTILITY	—
UNDERGROUND TELEPHONE	—
UNDERGROUND ELECTRIC	—
WATER LINE	—
SEWER LINE	—
GAS LINE	—
STORM SEWER/CULVERT	—
CONTOUR LINE	—



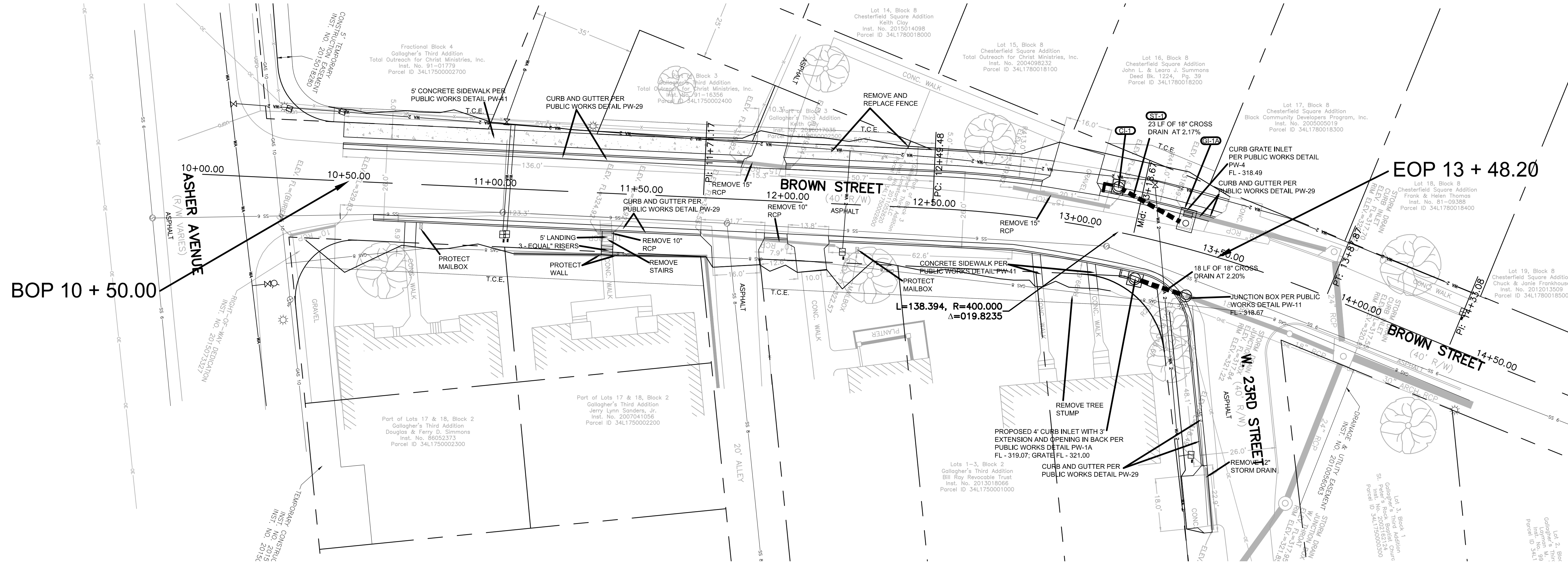
TYPICAL SECTION OF IMPROVEMENTS

CITY OF LITTLE ROCK, ARKANSAS
 BROWN ST. FROM 24TH TO ASHER
 LEGEND AND QUANTITIES

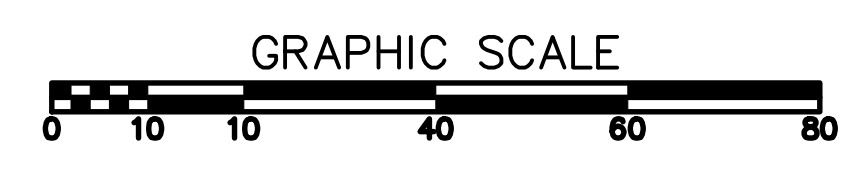
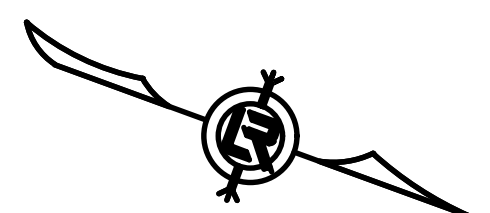
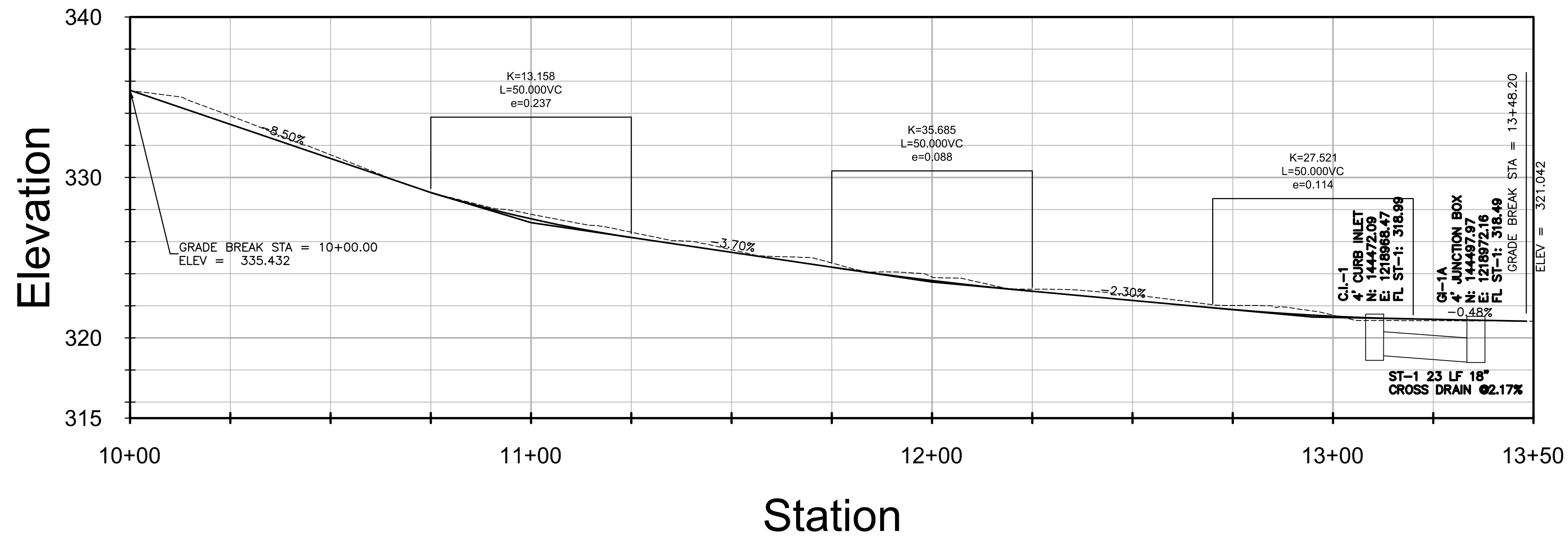
DEPARTMENT OF PUBLIC WORKS
 CIVIL ENGINEERING
 701 W. MARKHAM
 LITTLE ROCK, ARKANSAS 72201



DRAWN BY	BY
DESIGNED	BK
CHECKED	BK
DATE	10-11-2017
SCALE	N.T.S.
PROJECT NO.	CLR 16-1-ST-70
SHEET NO.	C2





Profile View of BROWN STREET



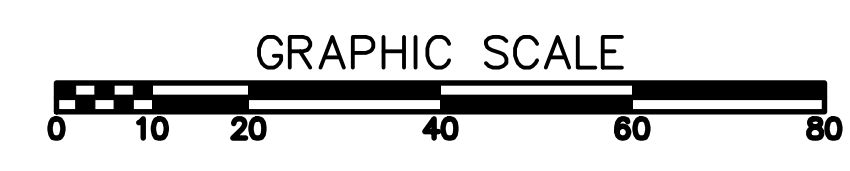
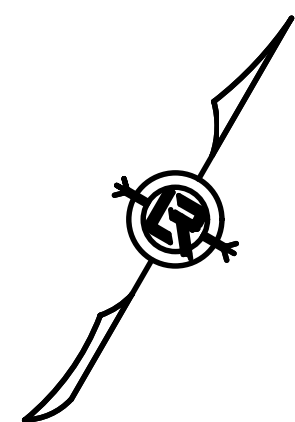
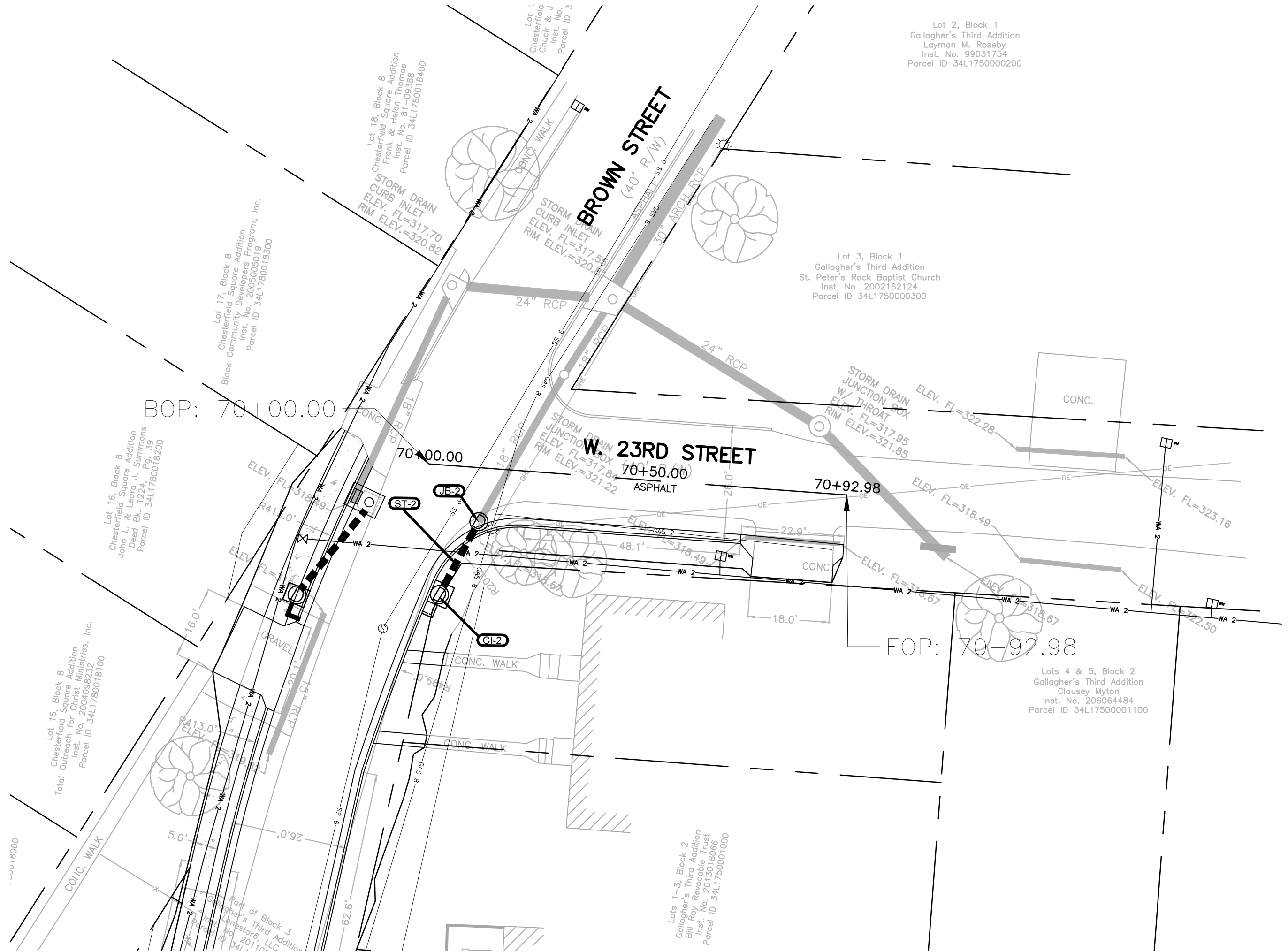
REVISIONS	DATE

CITY OF LITTLE ROCK, ARKANSAS
 BROWN ST. FROM 24TH TO ASHER
 BROWN STREET PLAN AND PROFILE
 STA10+00 TO 13+55.04

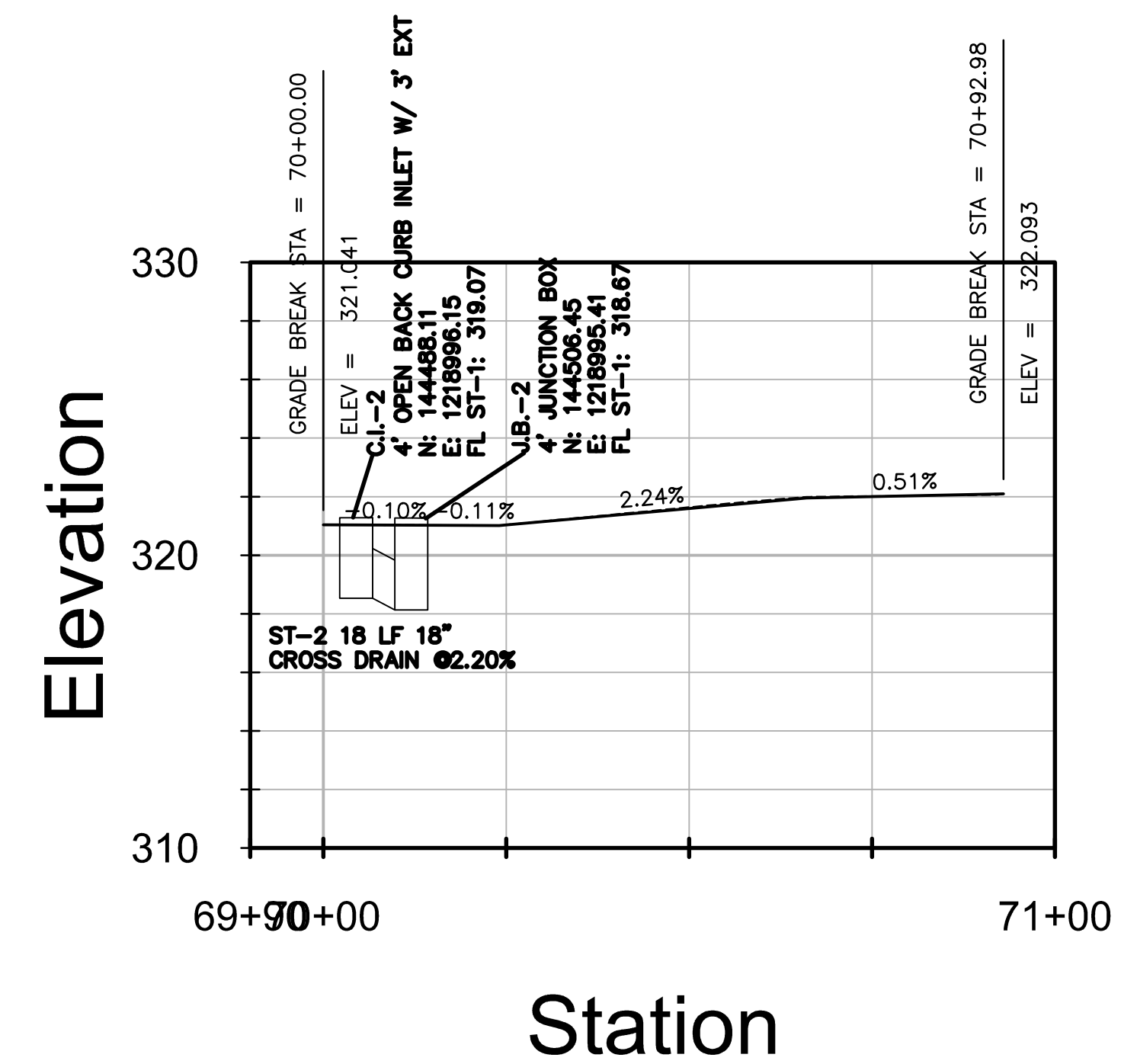
DEPARTMENT OF PUBLIC WORKS
 CIVIL ENGINEERING
 701 W. MARKHAM
 LITTLE ROCK, ARKANSAS 72201


DRAWN BY	BY
DESIGNED	BK
CHECKED	BK
DATE	10-11-2017
SCALE	H: 1"=20' V: 1"=5'
PROJECT NO.	CLR 16-1-ST-70
SHEET NO.	C3



Profile View of 23RD STREET



REVISIONS	DATE

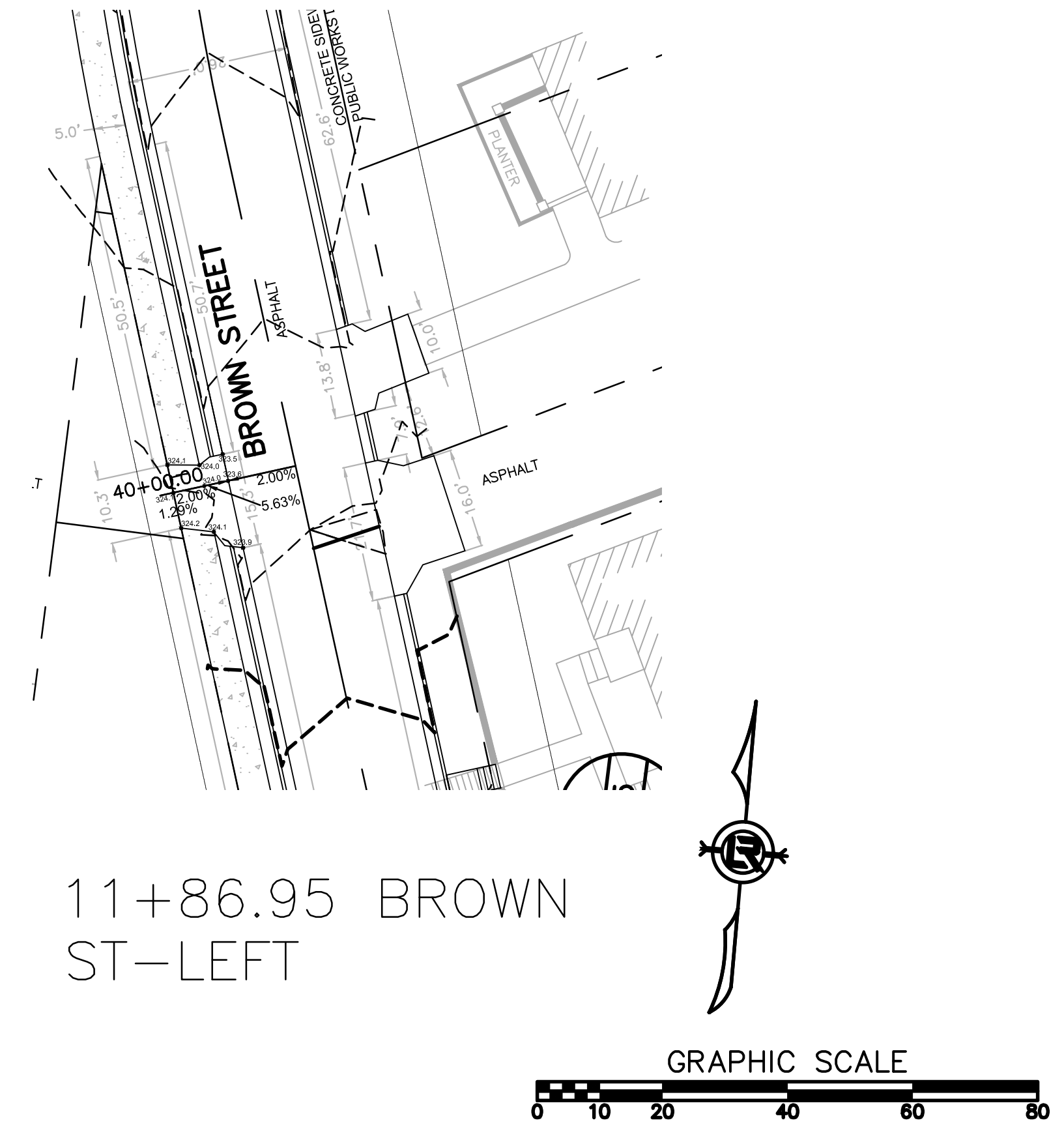
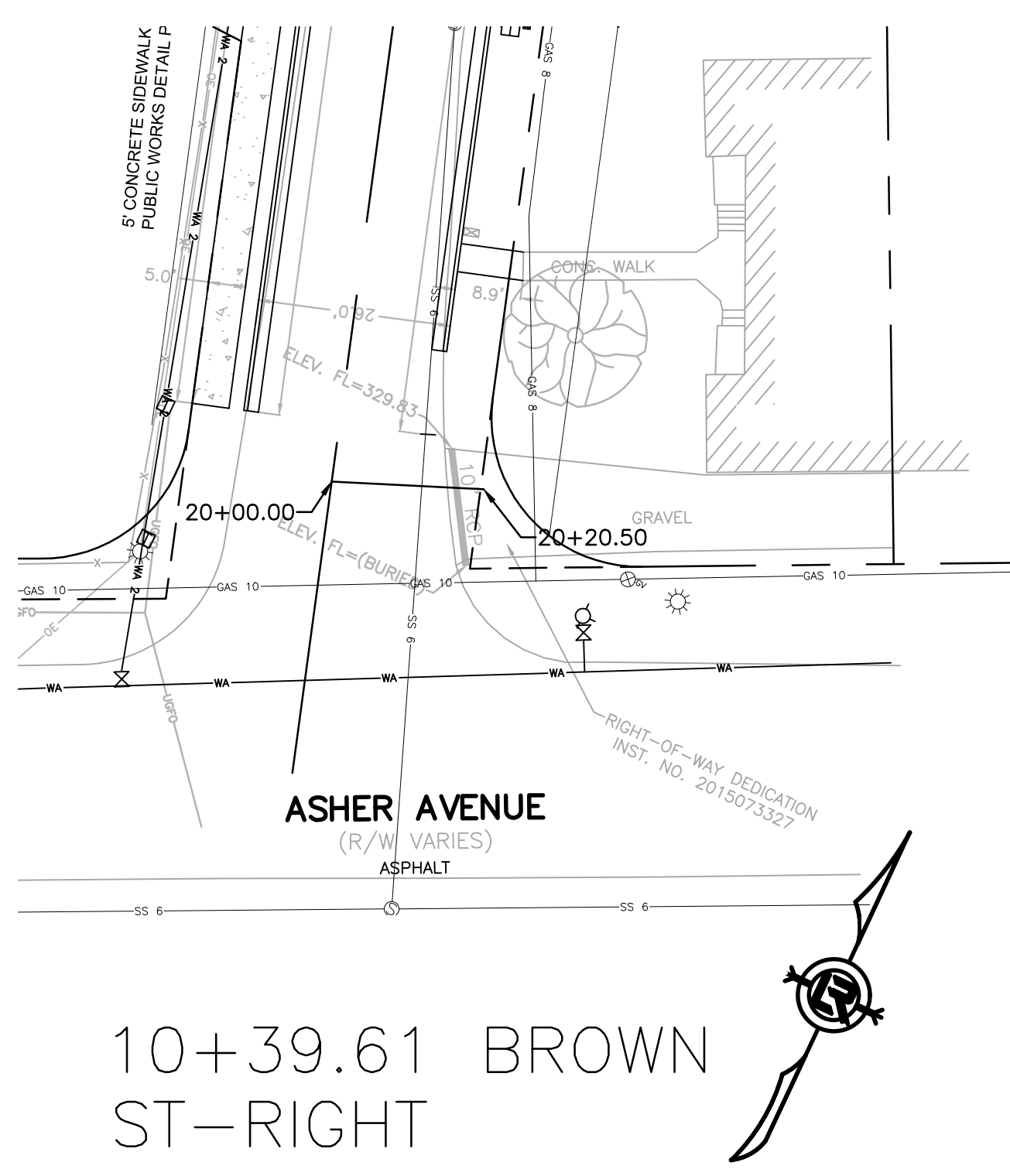
CITY OF LITTLE ROCK, ARKANSAS
 BROWN ST. FROM 24TH TO ASHER
 23RD STREET PLAN AND PROFILE
 STA 50+00 TO 50+94.67

DEPARTMENT OF PUBLIC WORKS
 CIVIL ENGINEERING
 701 W. MARKHAM
 LITTLE ROCK, ARKANSAS 72201



DRAWN BY	BY
DESIGNED	BK
CHECKED	BK
DATE	10-11-2017
SCALE	H: 1"=20' V: 1"=5'
PROJECT NO.	CLR 16-1-ST-70
SHEET NO.	C4

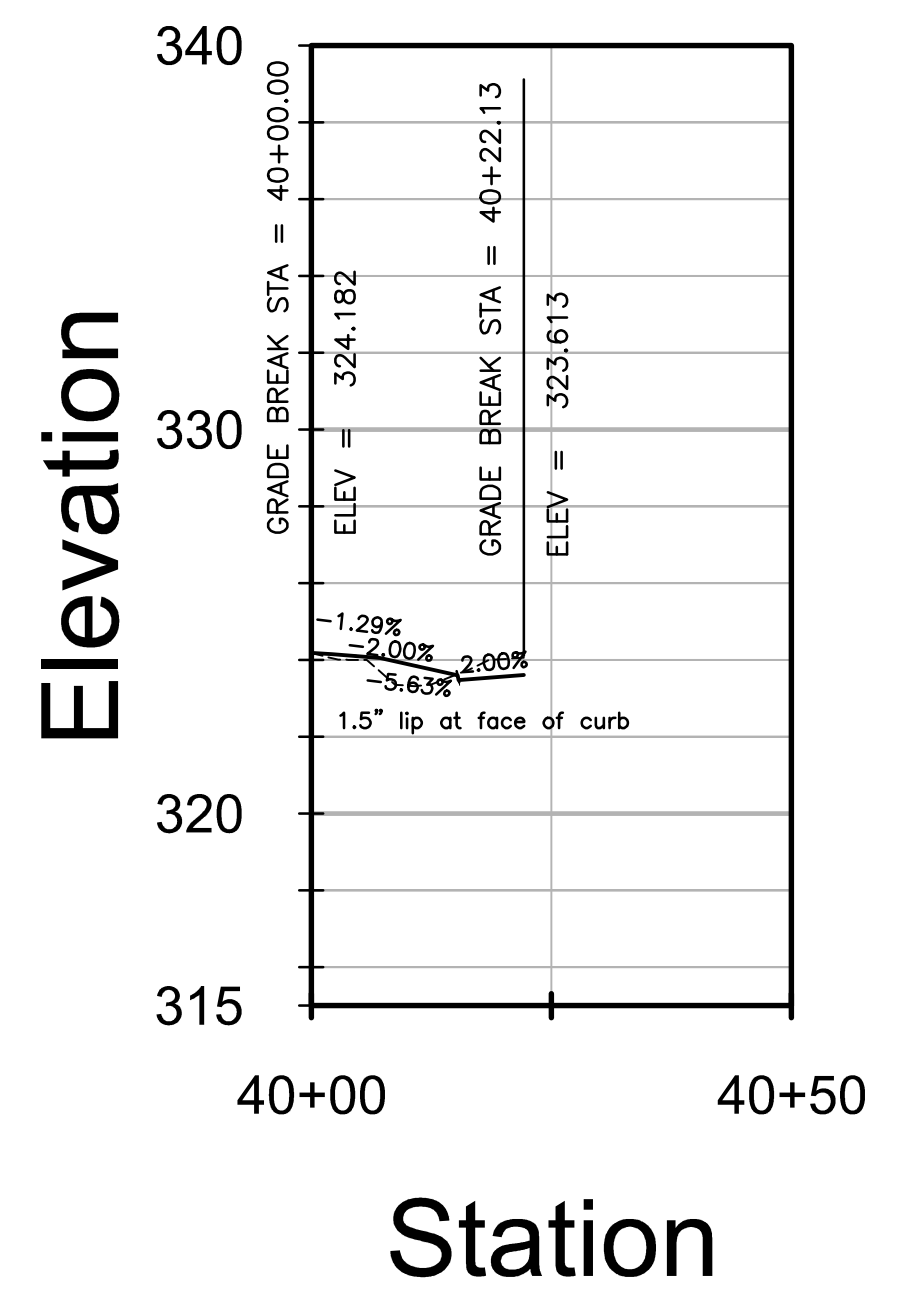
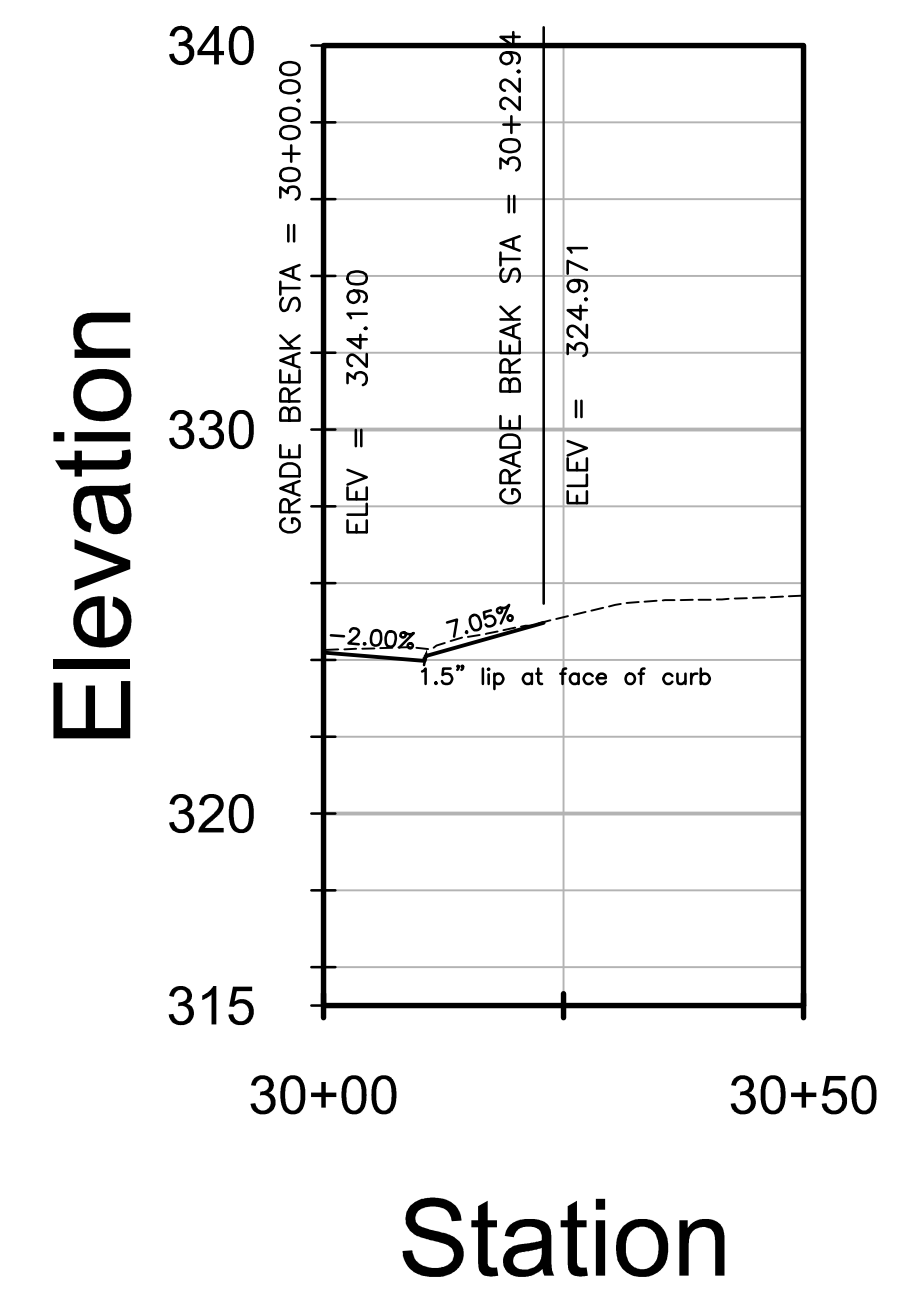
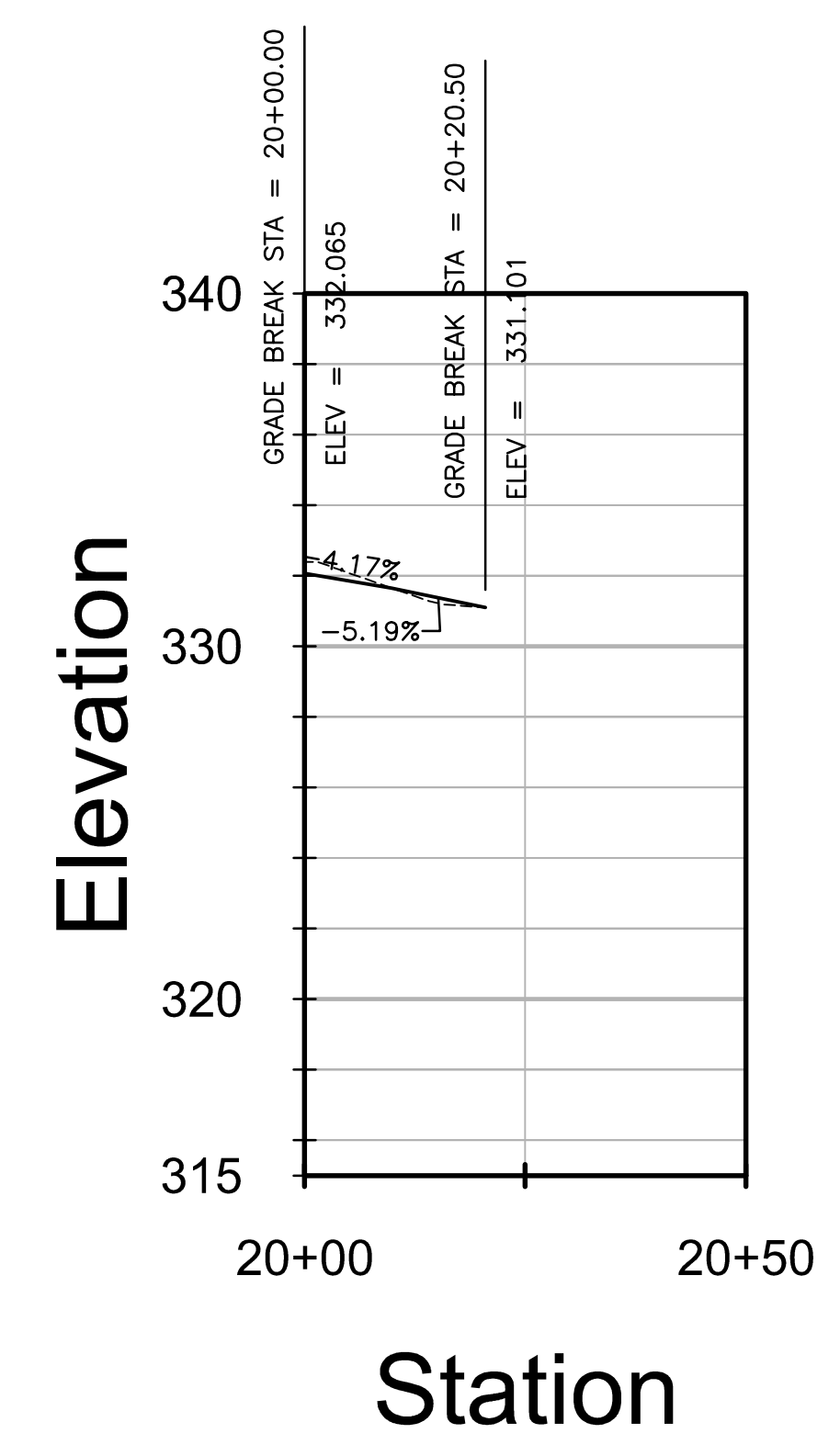
REVISIONS	DATE



Profile View of DRIVEWAY

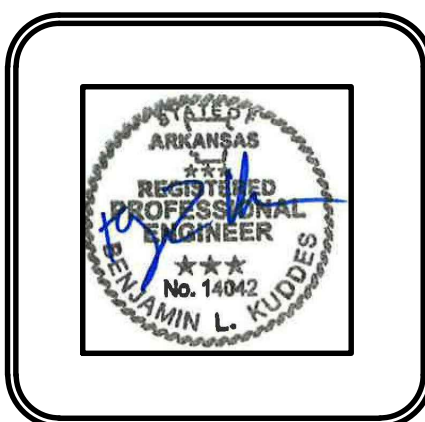
Profile View of DRIVEWAY

Profile View of DRIVEWAY



CITY OF LITTLE ROCK, ARKANSAS
 BROWN ST. FROM 24TH TO ASHER
 DRIVEWAY PLAN AND PROFILES

DEPARTMENT OF PUBLIC WORKS
 CIVIL ENGINEERING
 701 W. MARKHAM
 LITTLE ROCK, ARKANSAS 72201



DRAWN BY
 BY BK
 DESIGNED BK
 CHECKED BK
 DATE 10-11-2017
 SCALE H: 1"=20' V: 1"=5'
 PROJECT NO. CLR 16-1-ST-70
 SHEET NO. C5

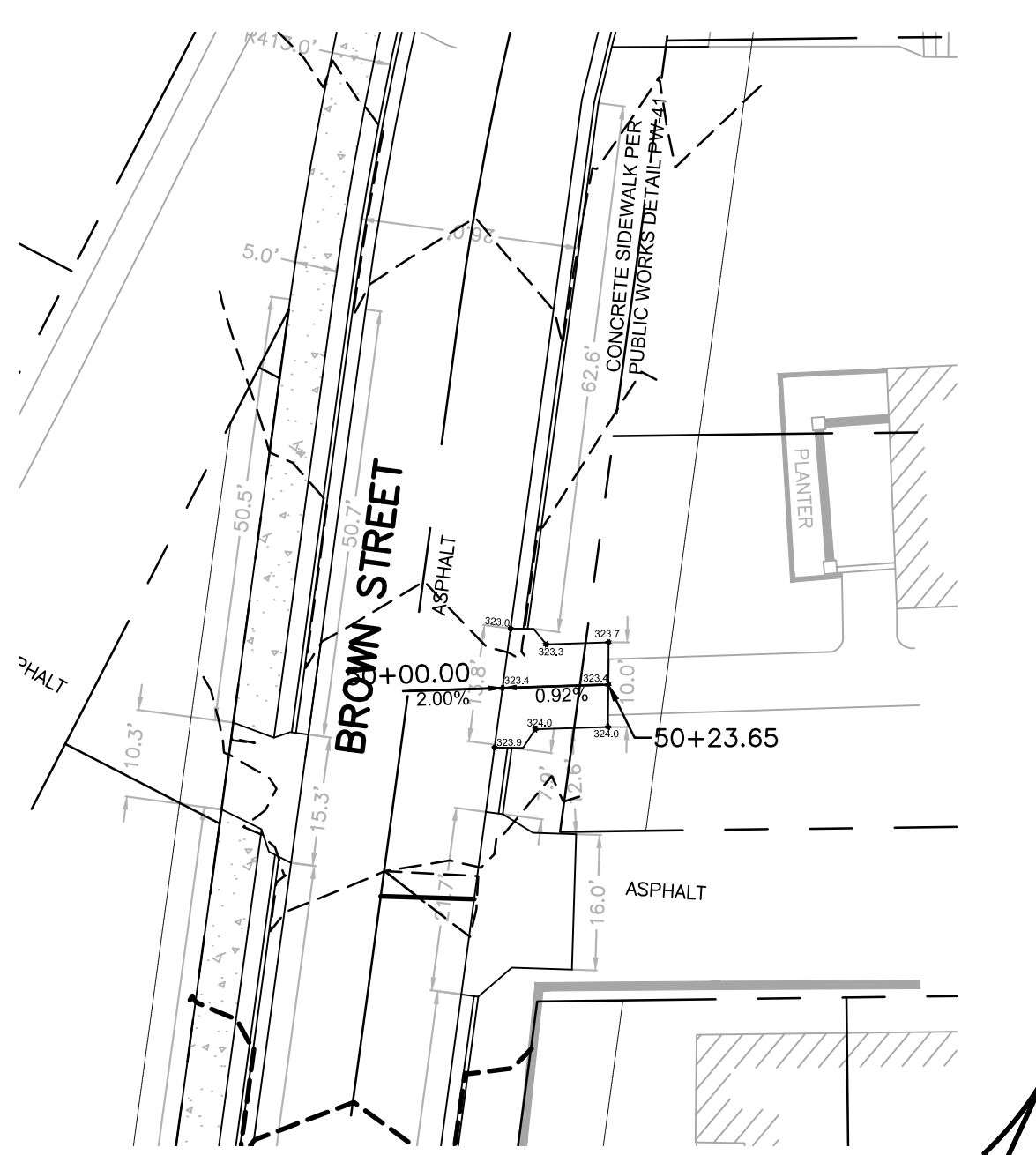
REVISIONS	DATE

CITY OF LITTLE ROCK, ARKANSAS
 BROWN ST. FROM 24TH TO ASHER
 DRIVEWAY PLAN AND PROFILES 2

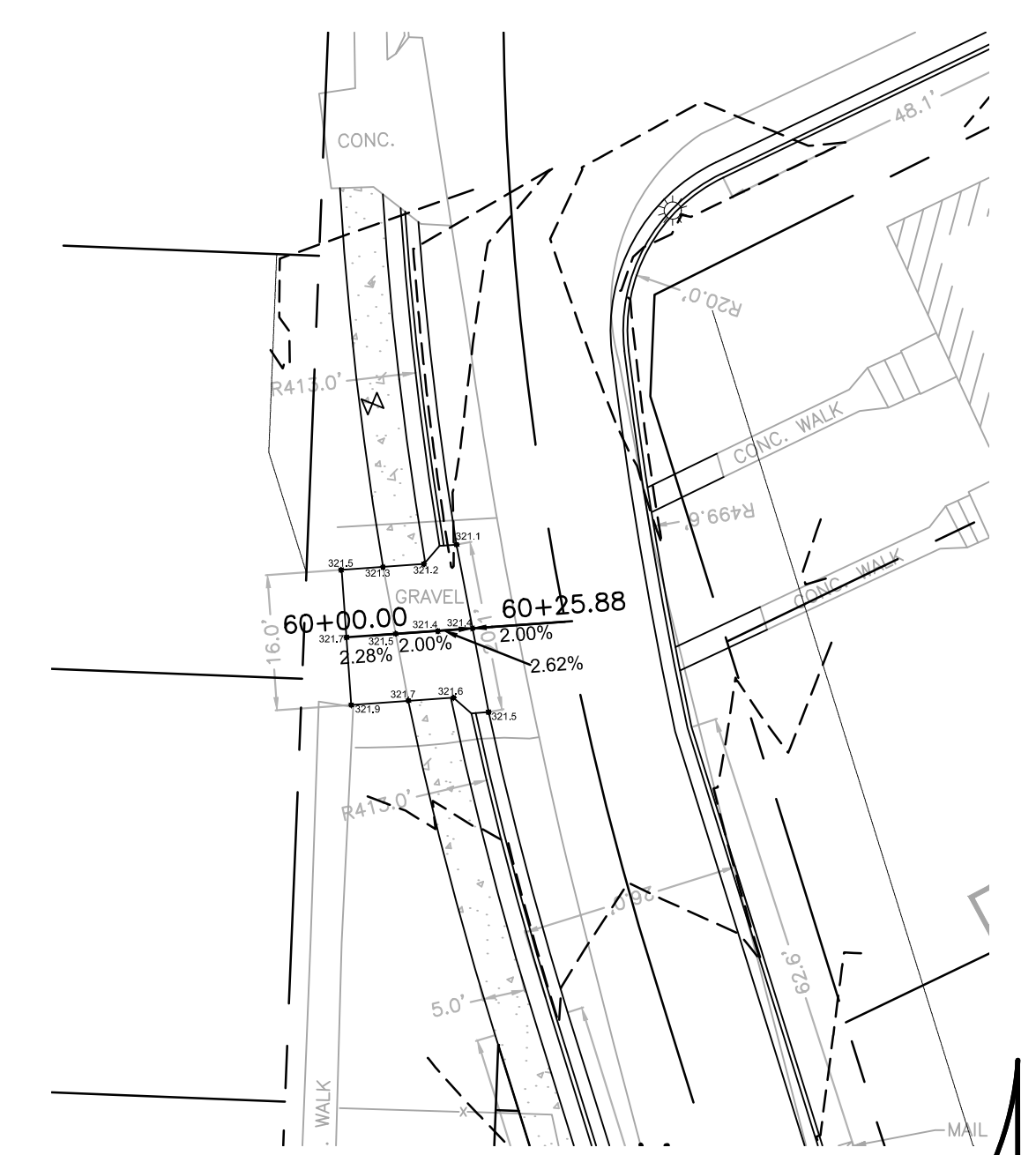
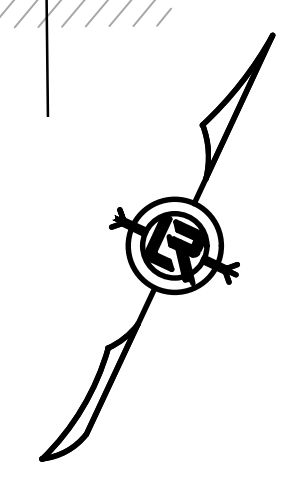
DEPARTMENT OF PUBLIC WORKS
 CIVIL ENGINEERING
 701 W. MARKHAM
 LITTLE ROCK, ARKANSAS 72201



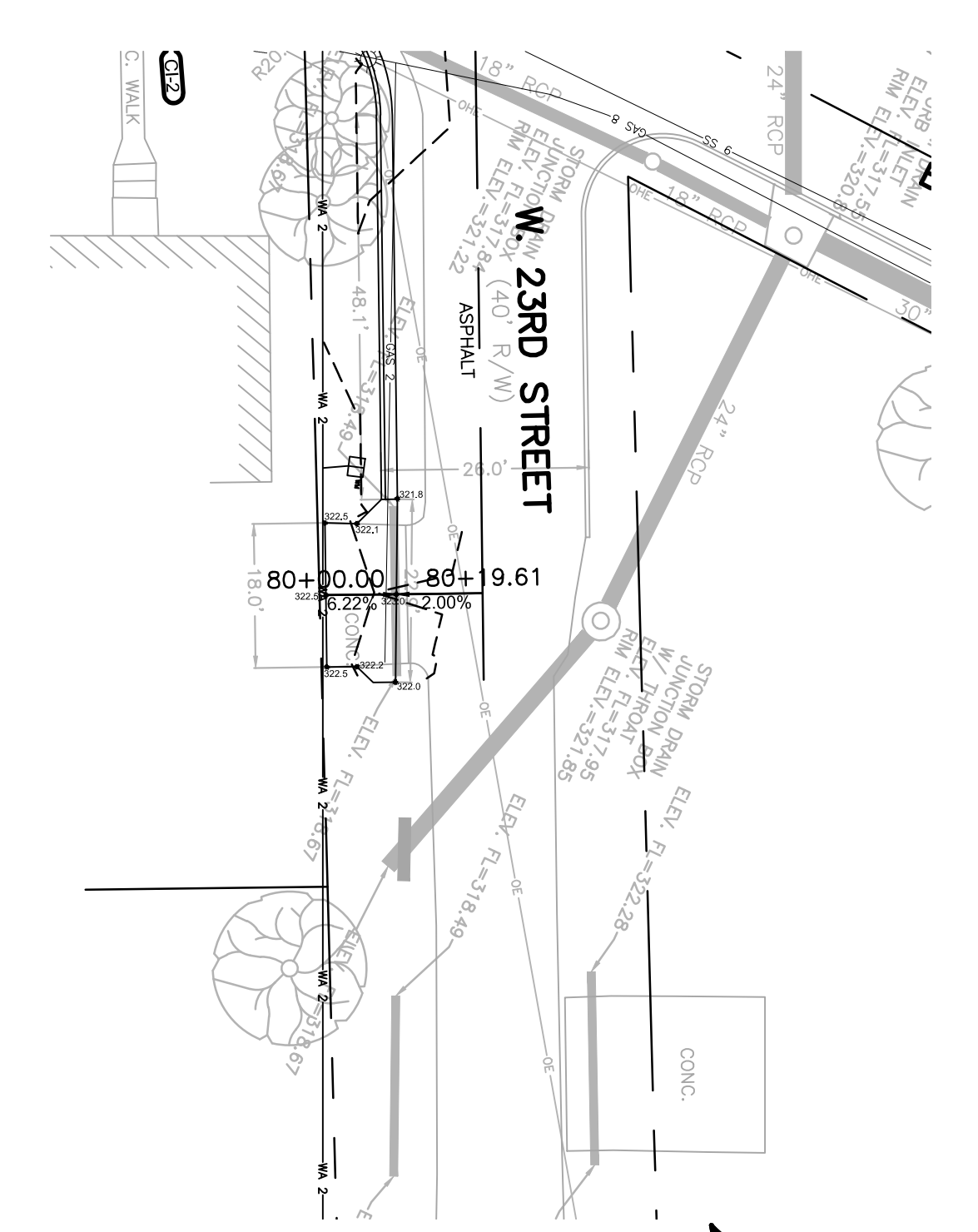
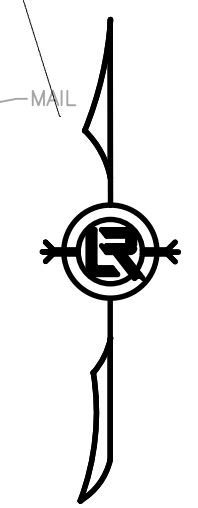
DRAWN BY
 BY BK
 DESIGNED BK
 CHECKED BK
 DATE 10-11-2017
 SCALE H: 1"=20' V: 1"=5'
 PROJECT NO. CLR 16-1-ST-70
 SHEET NO. C6



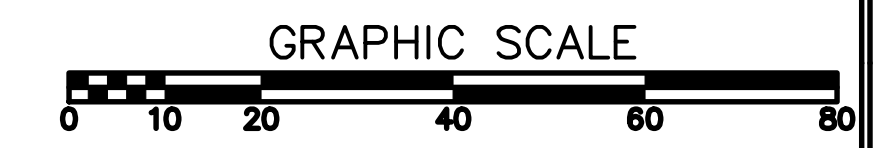
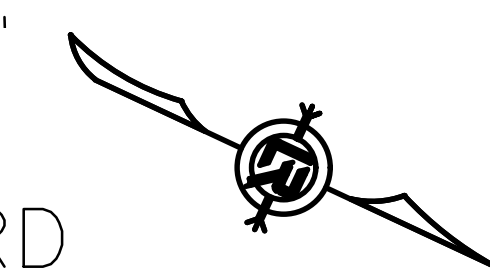
12+05.46 BROWN ST-RIGHT



12+93.71 BROWN ST-LEFT



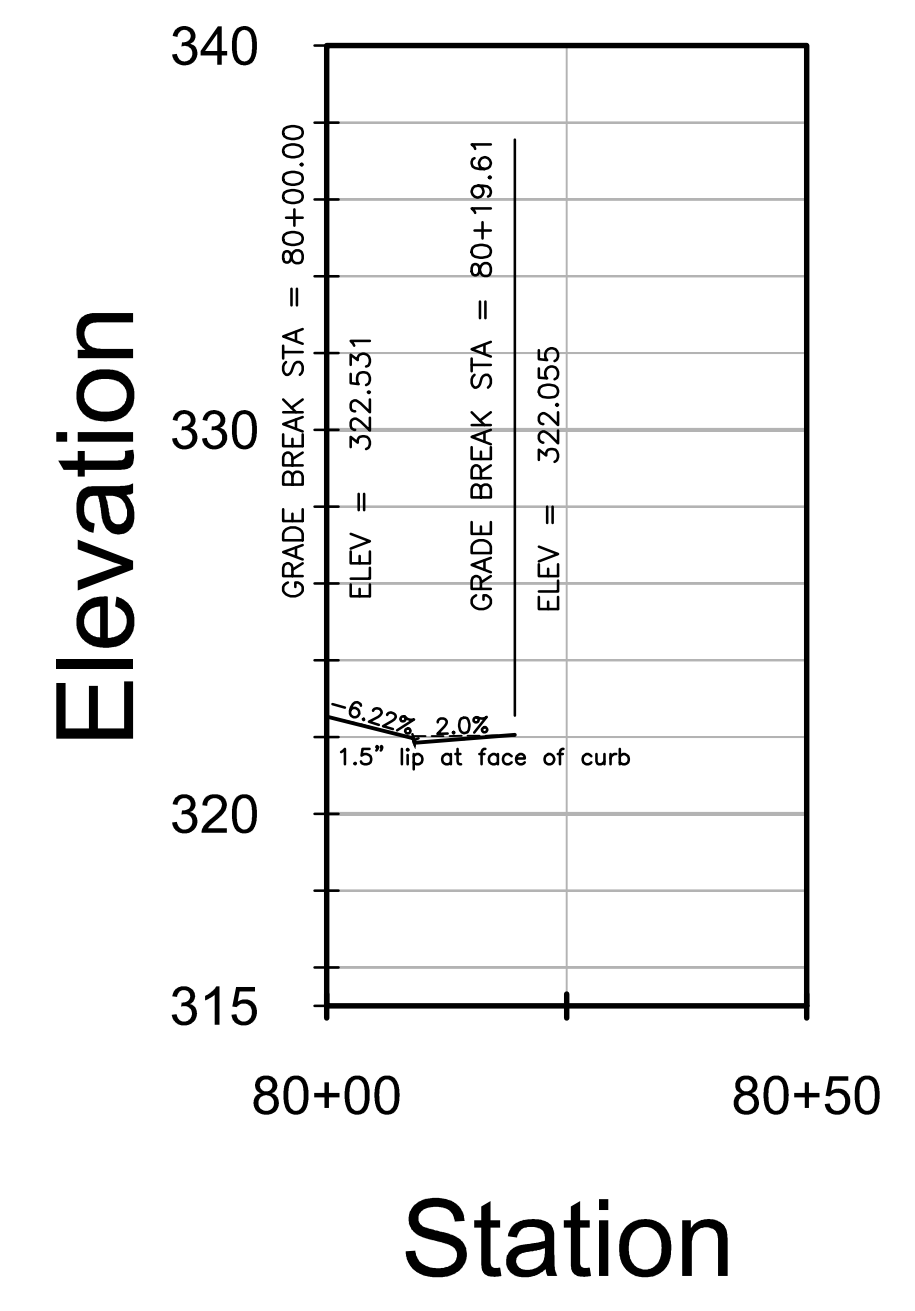
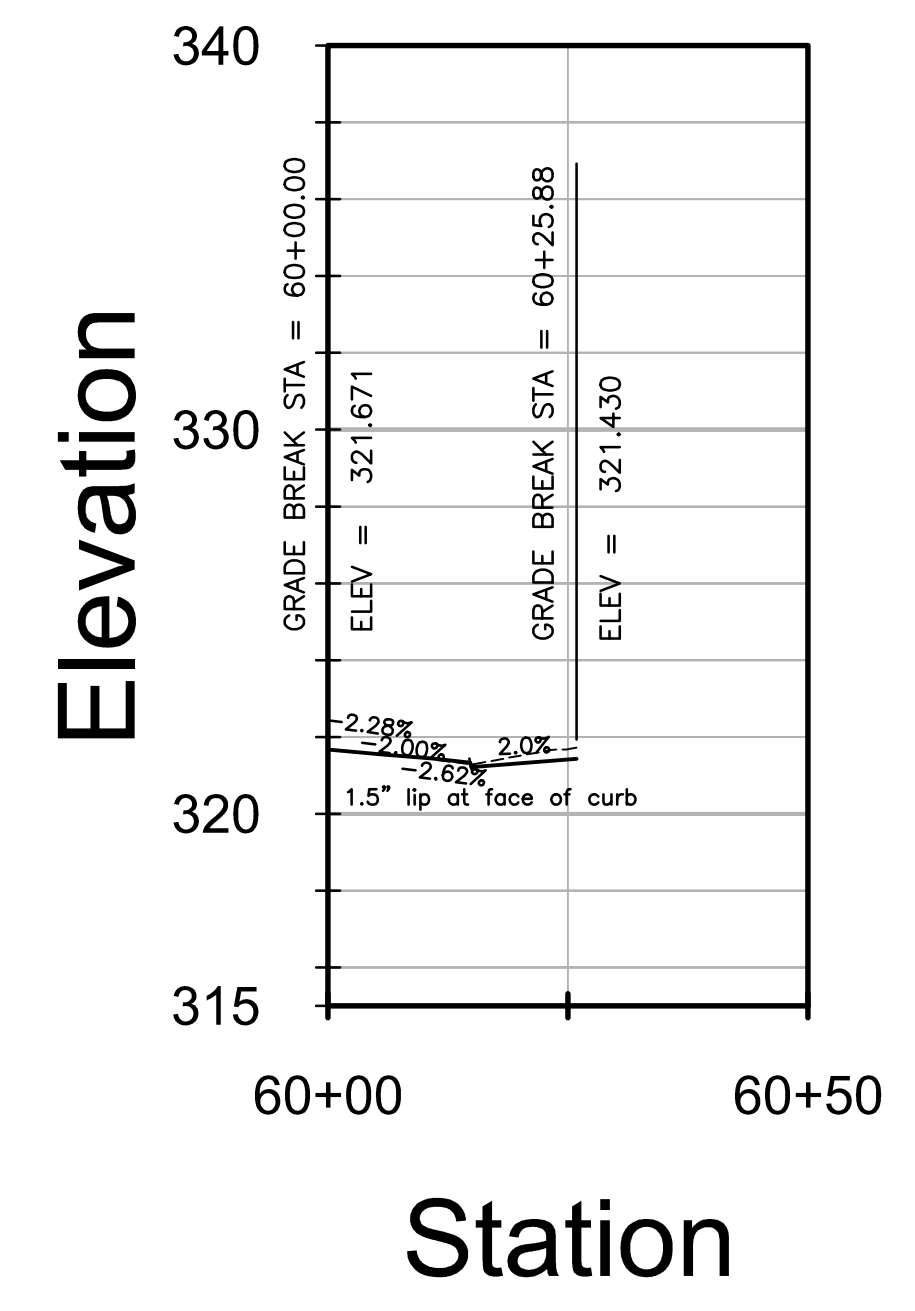
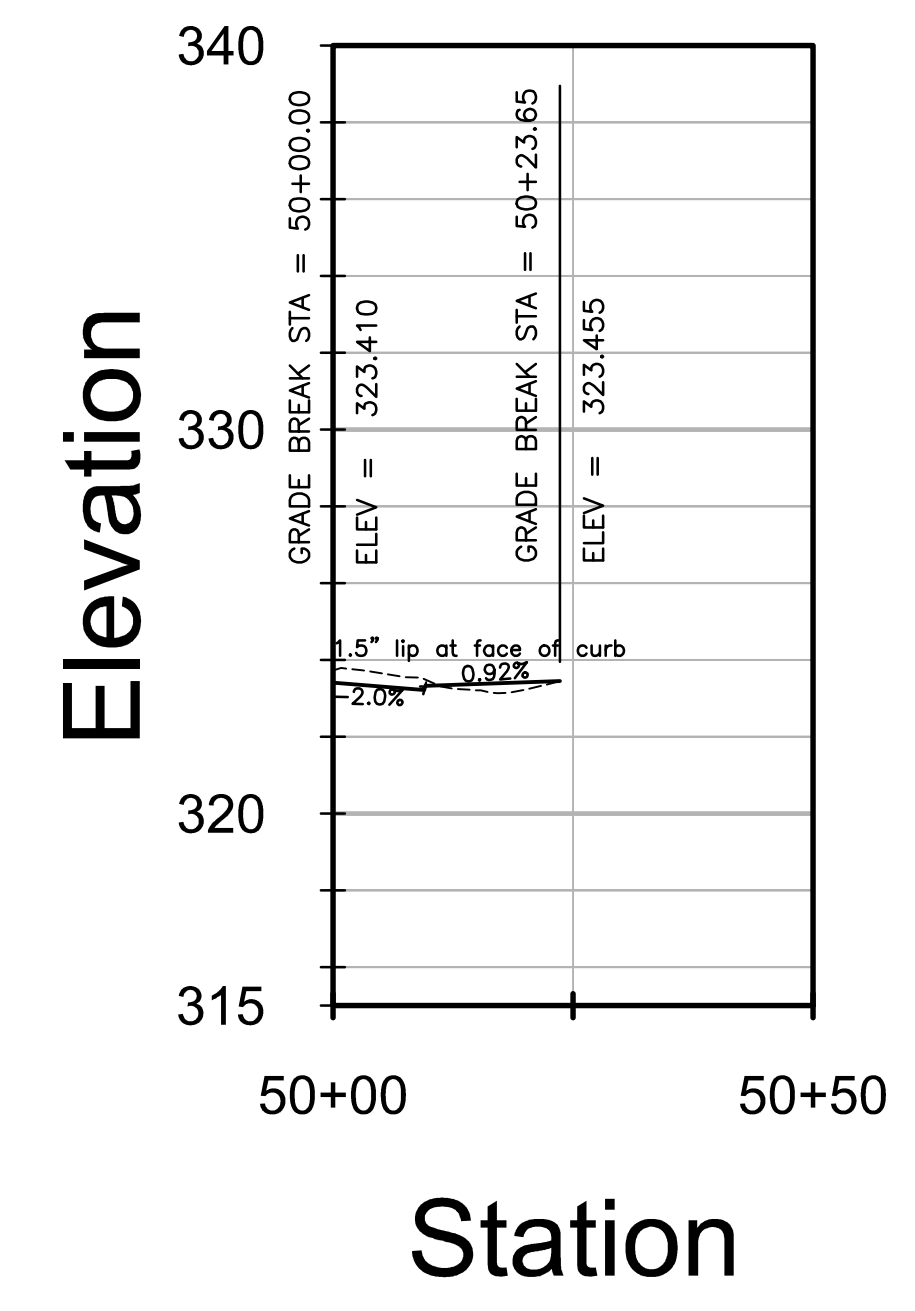
70+82.16 23RD ST-RIGHT

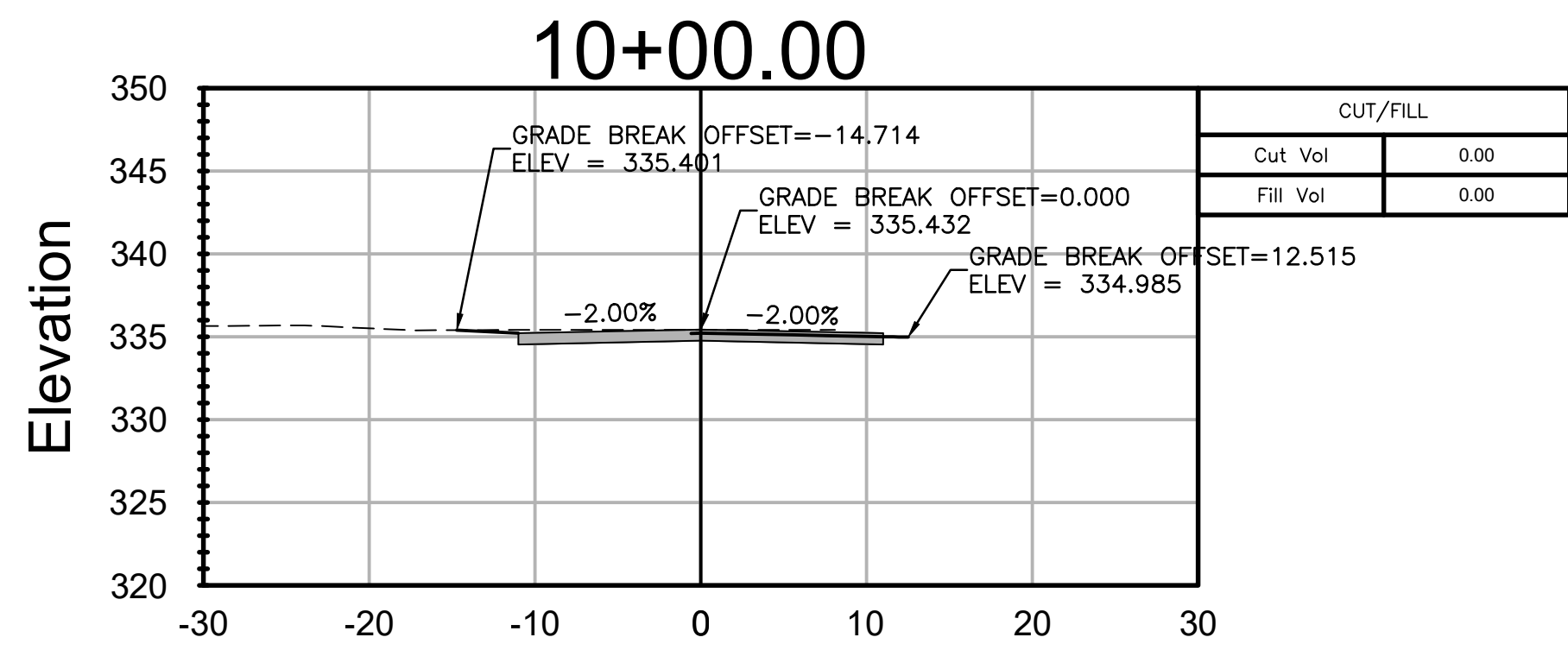


Profile View of DRIVEWAY

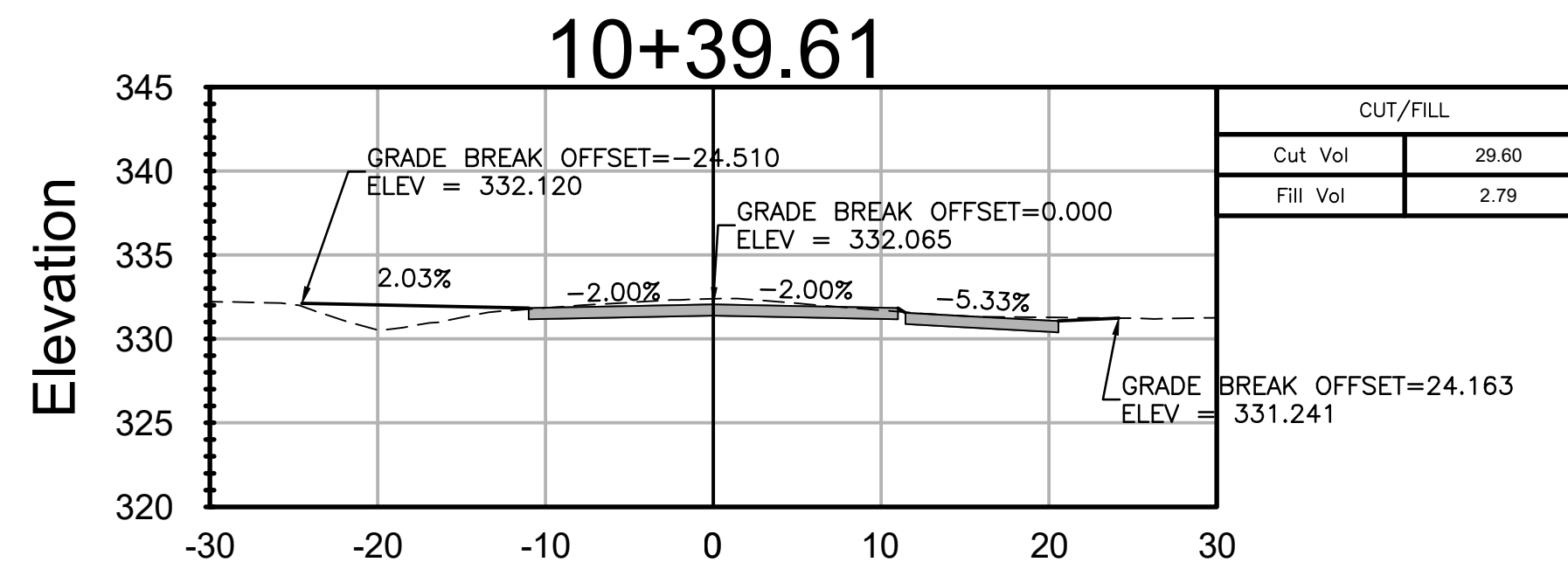
Profile View of DRIVEWAY

Profile View of DRIVEWAY

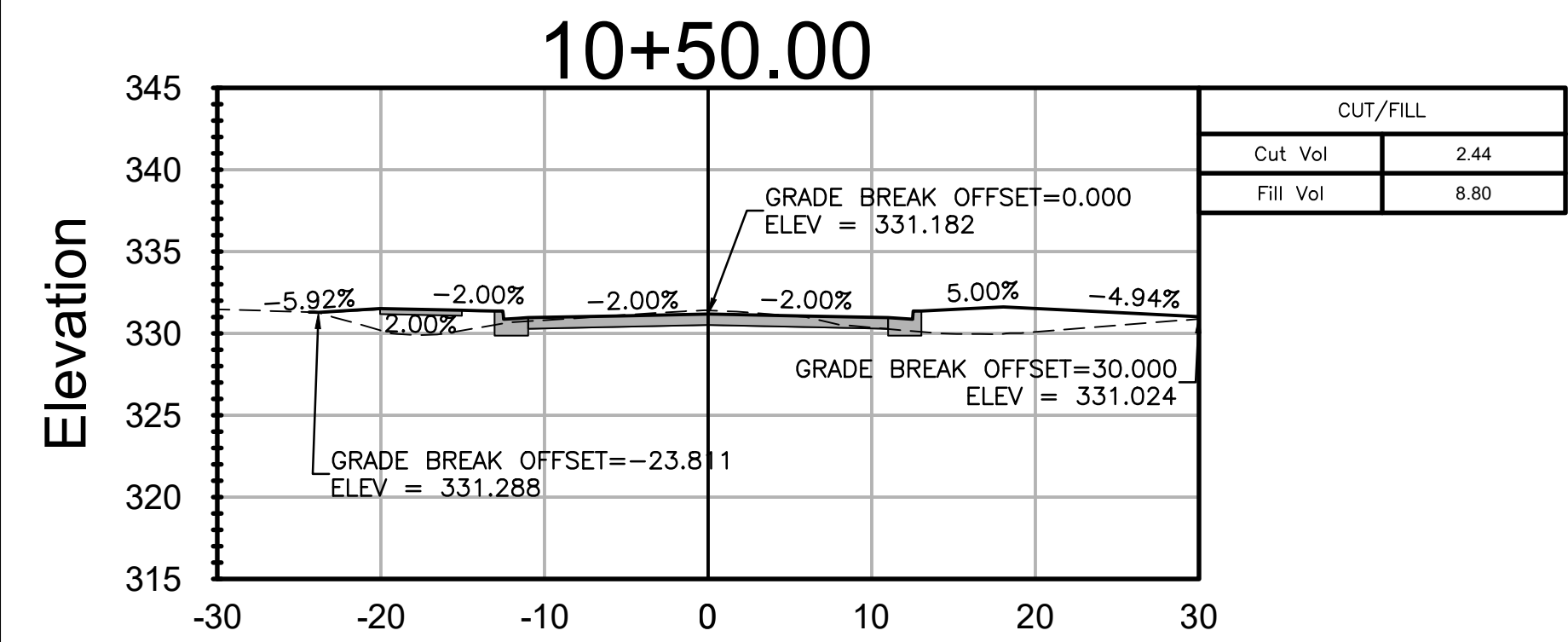




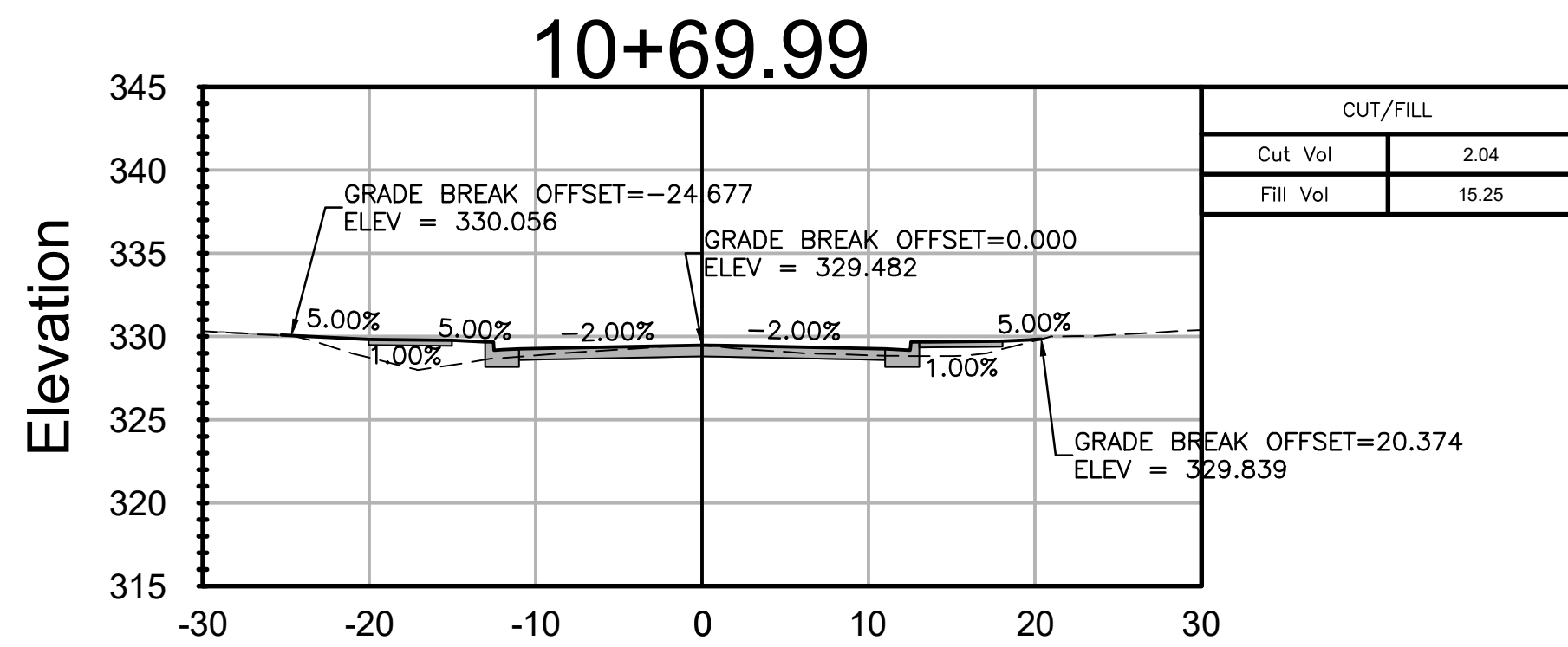
STA 10+00.00
NOT IN THIS PROJECT



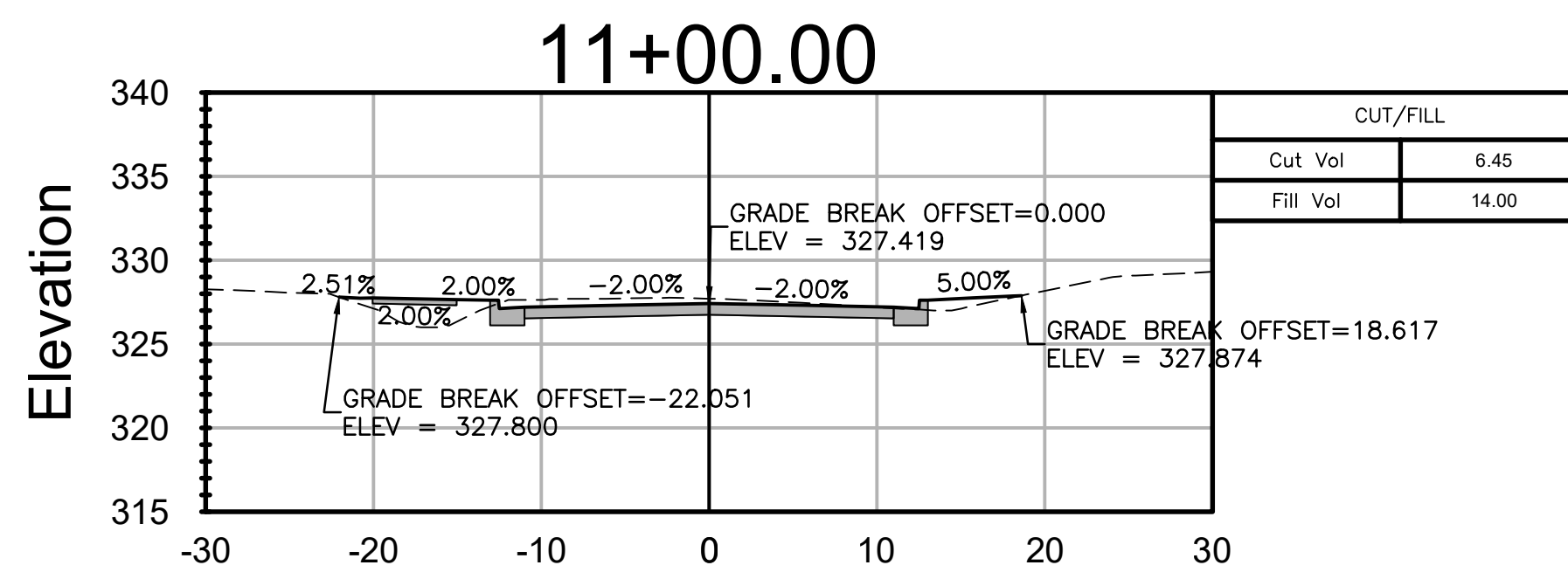
STA 10+39.61
NOT IN THIS PROJECT



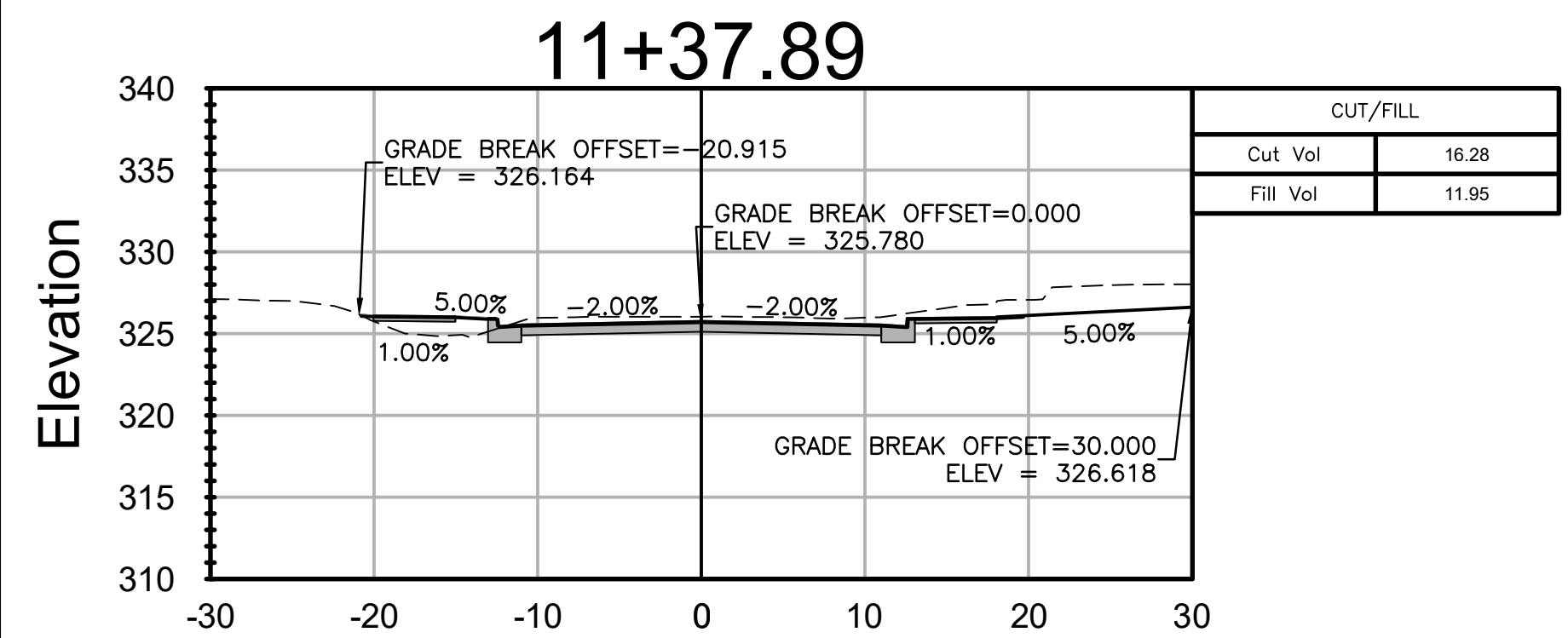
STA 10+50.00
BOP



STA 10+69.99



STA 11+00.00



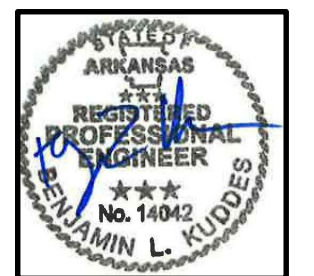
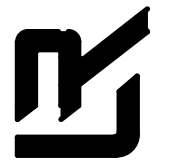
STA 11+37.89

REVISIONS	DATE

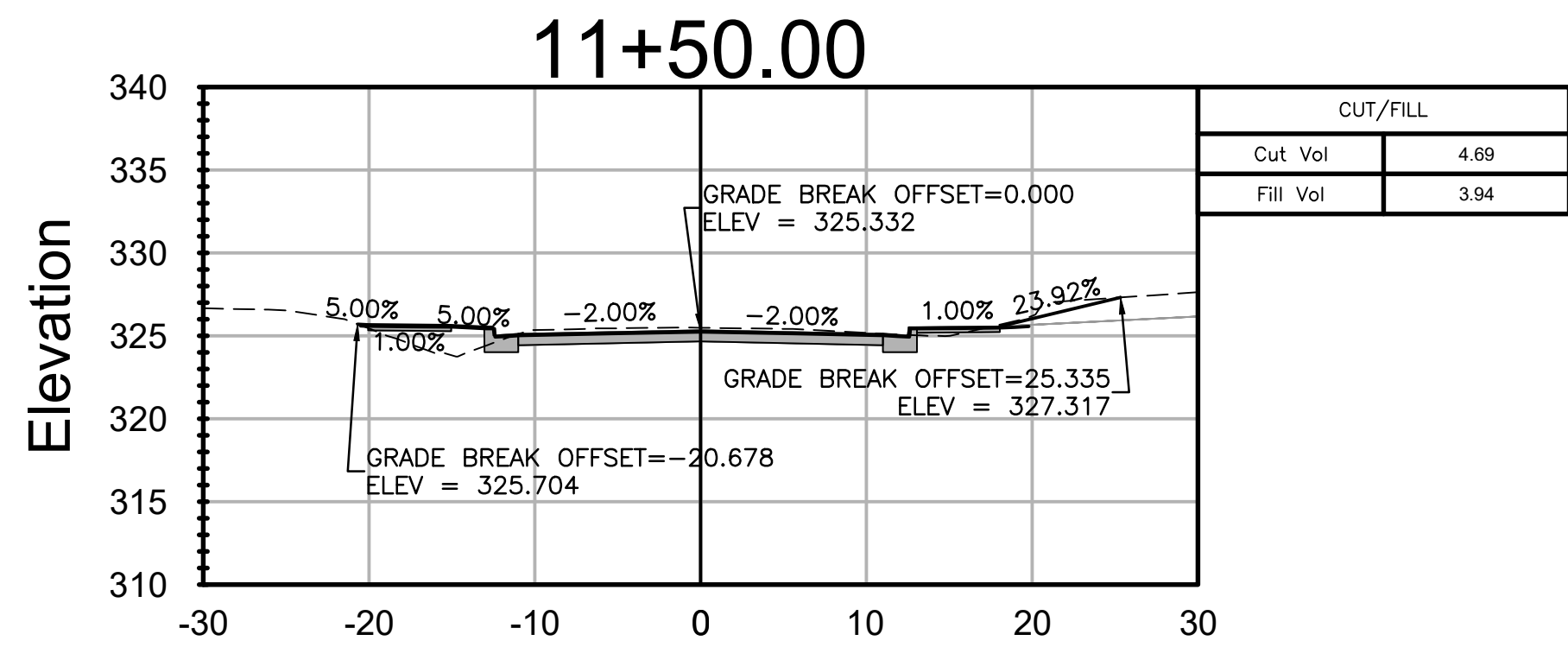
CITY OF LITTLE ROCK, ARKANSAS
BROWN ST. FROM 24TH TO ASHER
BROWN STREET CROSS SECTIONS



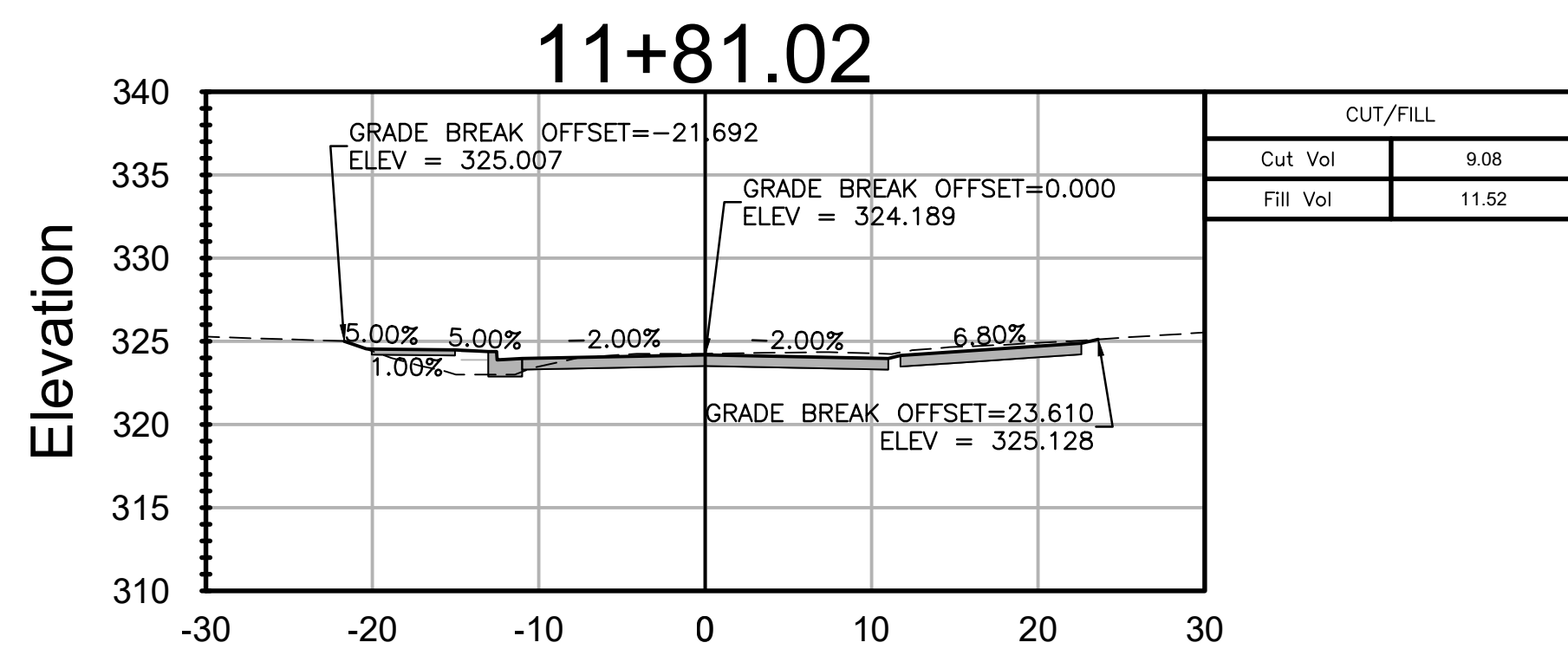
DEPARTMENT OF PUBLIC WORKS
CIVIL ENGINEERING
701 W. MARKHAM
LITTLE ROCK, ARKANSAS 72201



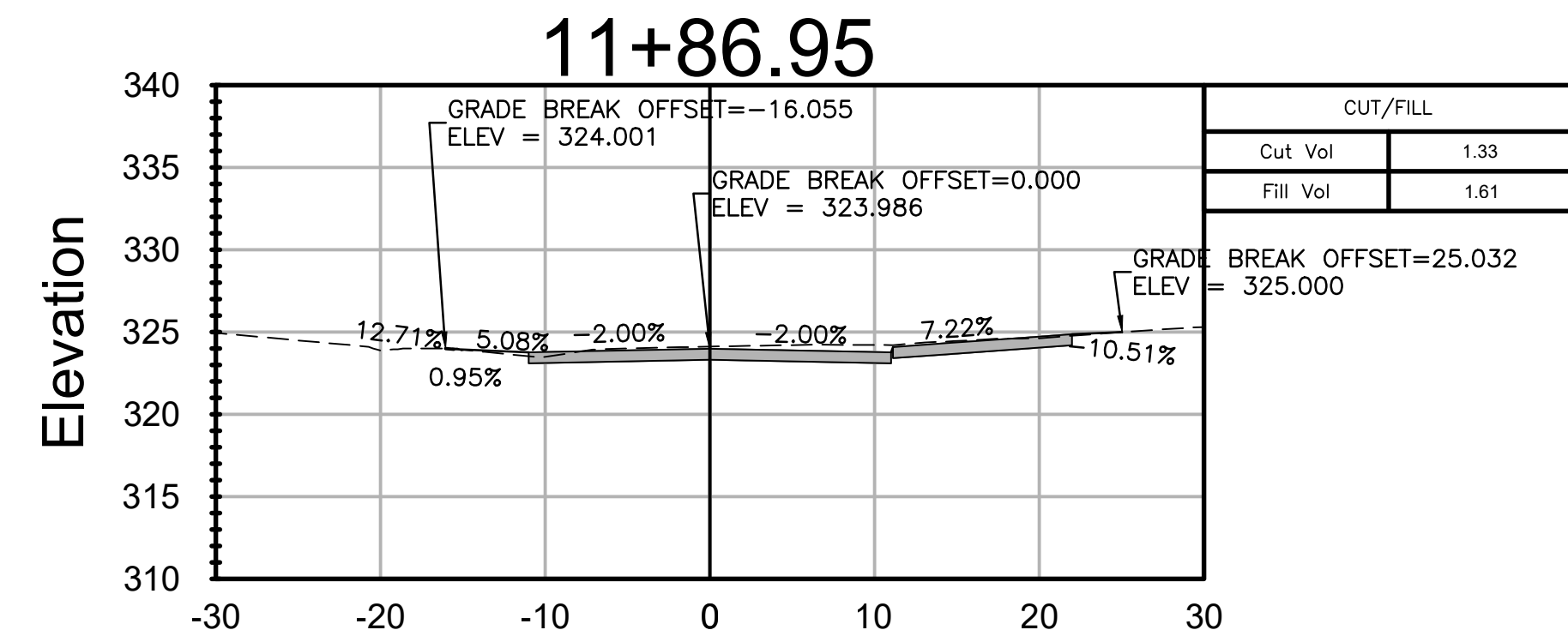
DRAWN BY	BK
DESIGNED	BK
CHECKED	BK
DATE	10-11-2017
SCALE	N.T.S.
PROJECT NO.	CLR 16-1-ST-70
SHEET NO.	C7



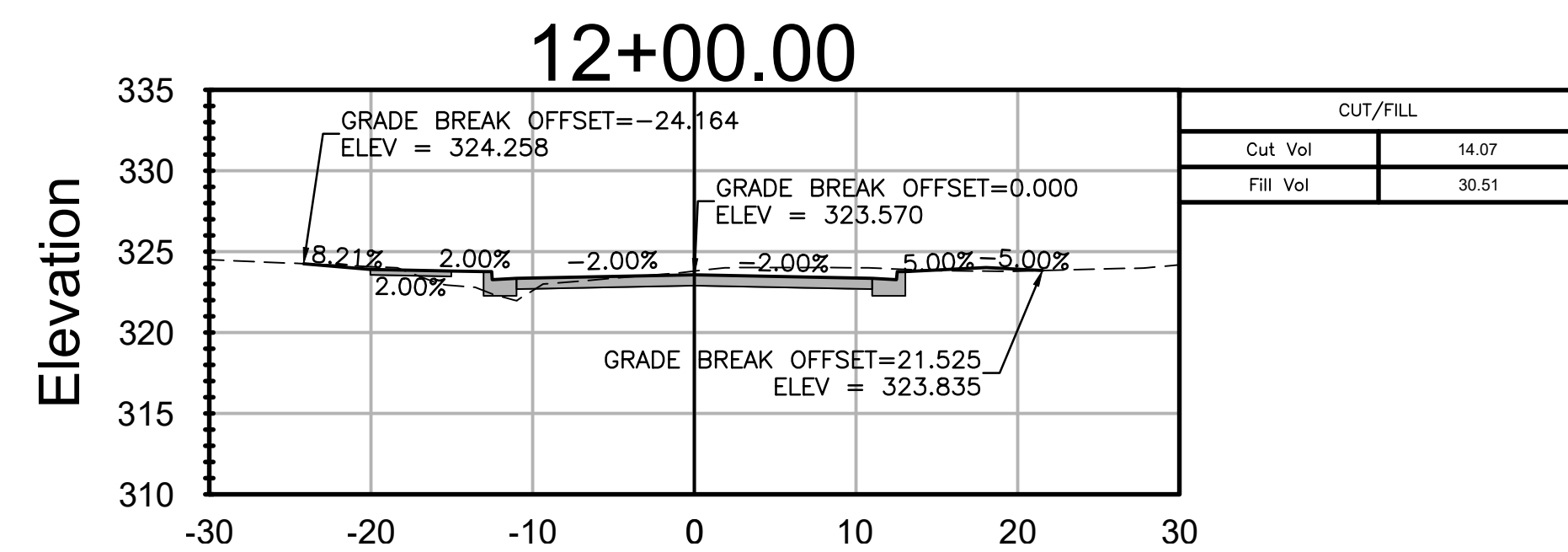
STA 11+50.00



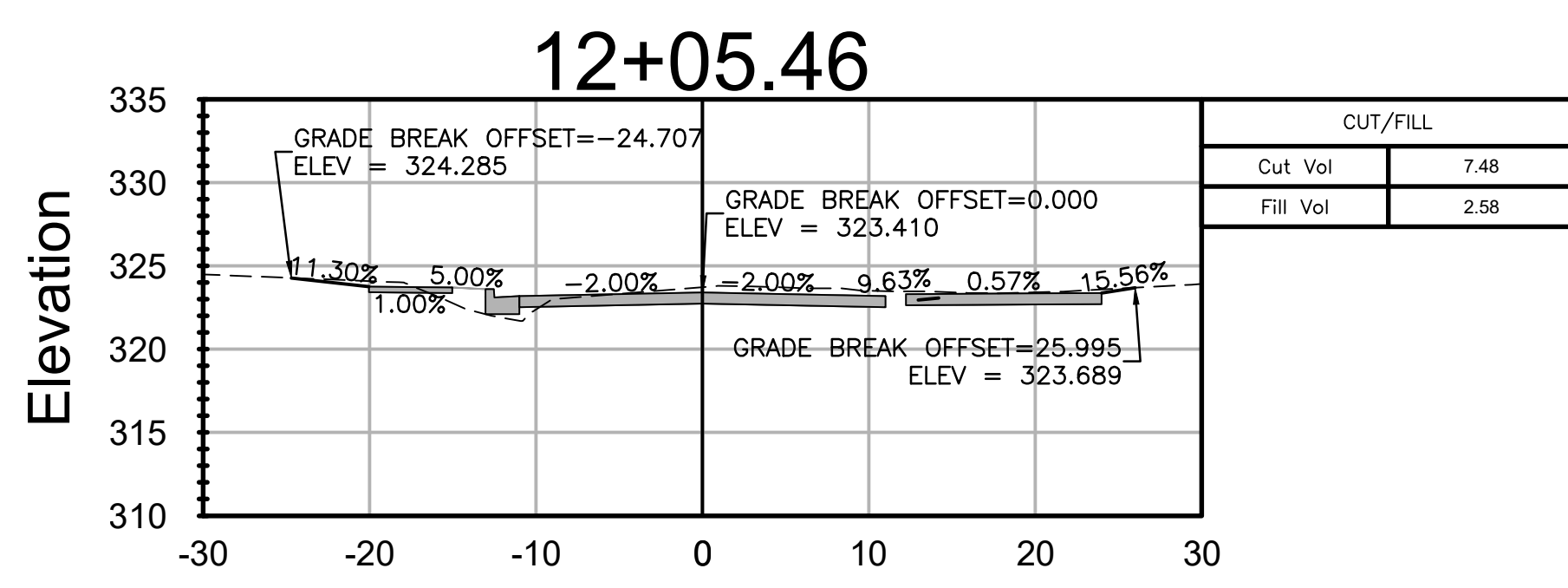
STA 11+81.02



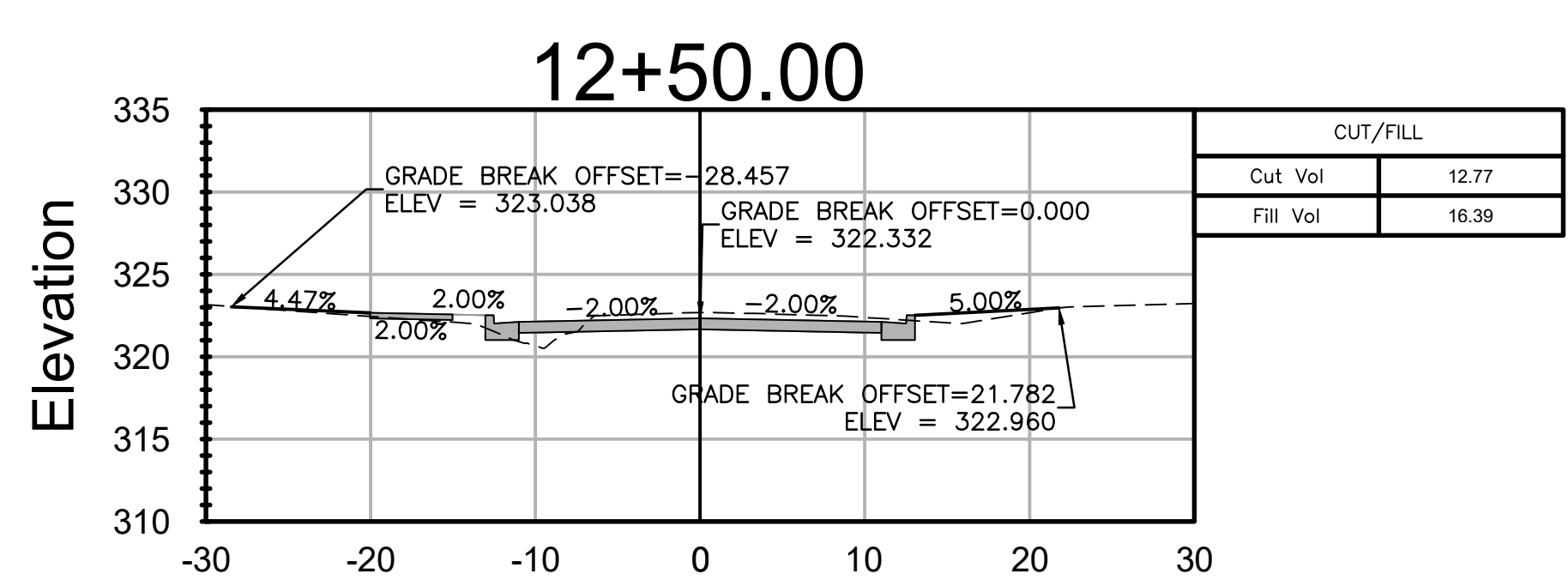
STA 11+86.95



STA 12+00.00



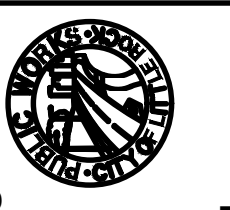
STA 12+05.46



STA 12+50.00

REVISIONS	DATE

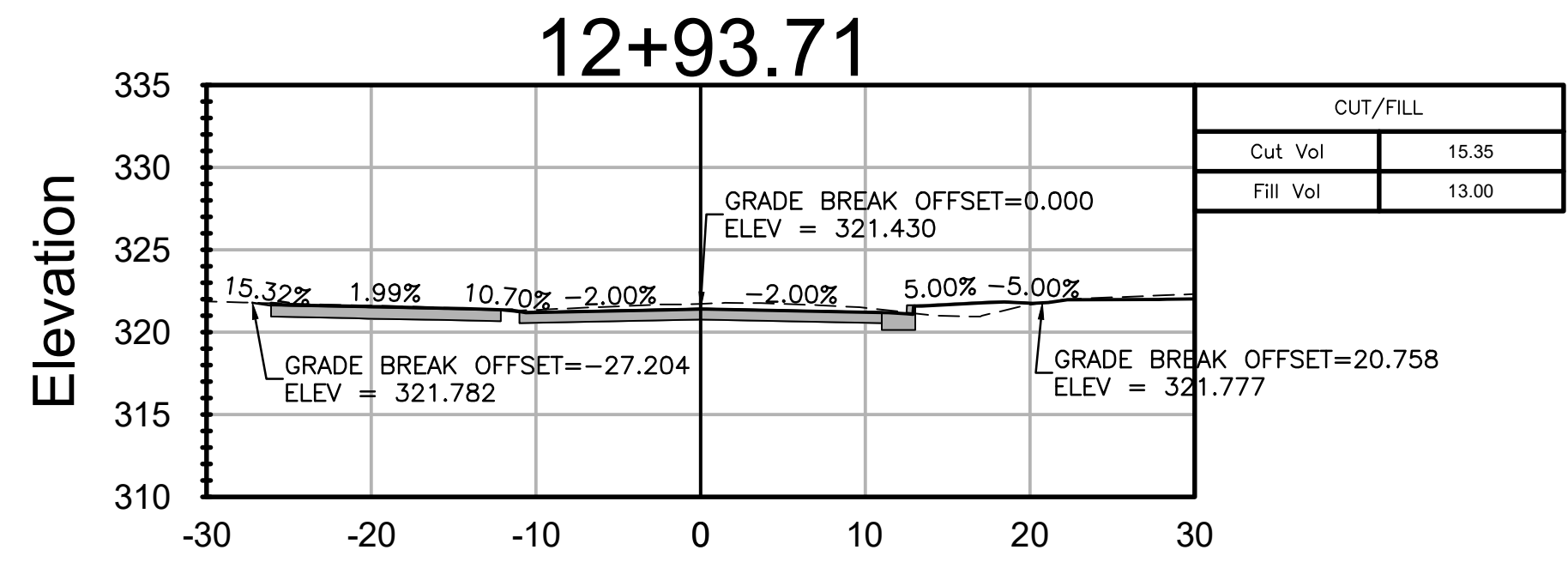
CITY OF LITTLE ROCK, ARKANSAS
 BROWN ST. FROM 24TH TO ASHER
 BROWN STREET CROSS SECTIONS 2



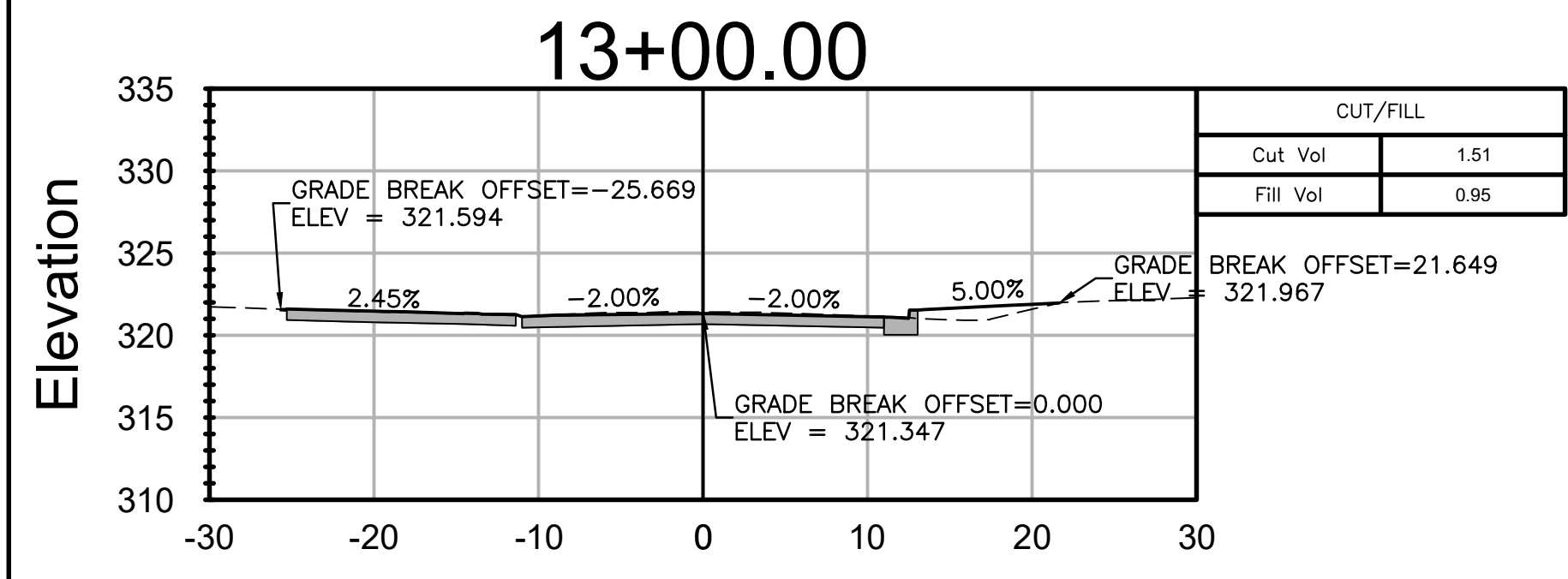
DEPARTMENT OF PUBLIC WORKS
 CIVIL ENGINEERING
 701 W. MARKHAM
 LITTLE ROCK, ARKANSAS 72201



DRAWN BY	BK
DESIGNED	BK
CHECKED	BK
DATE	10-11-2017
SCALE	N.T.S.
PROJECT NO.	CLR 16-1-ST-70
SHEET NO.	C8




STA 12+93.71




STA 13+00.00

REVISIONS	DATE

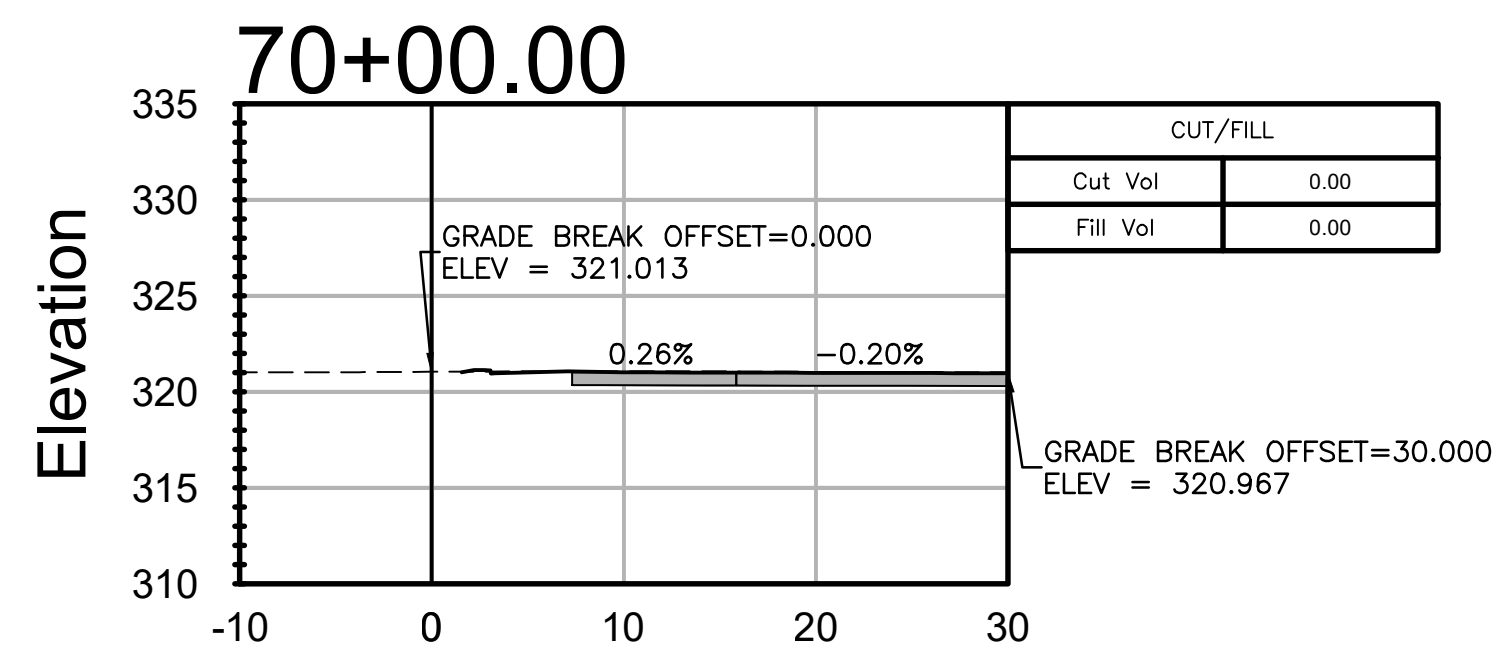
CITY OF LITTLE ROCK, ARKANSAS
 BROWN ST. FROM 24TH TO ASHER
 BROWN STREET CROSS SECTIONS 3



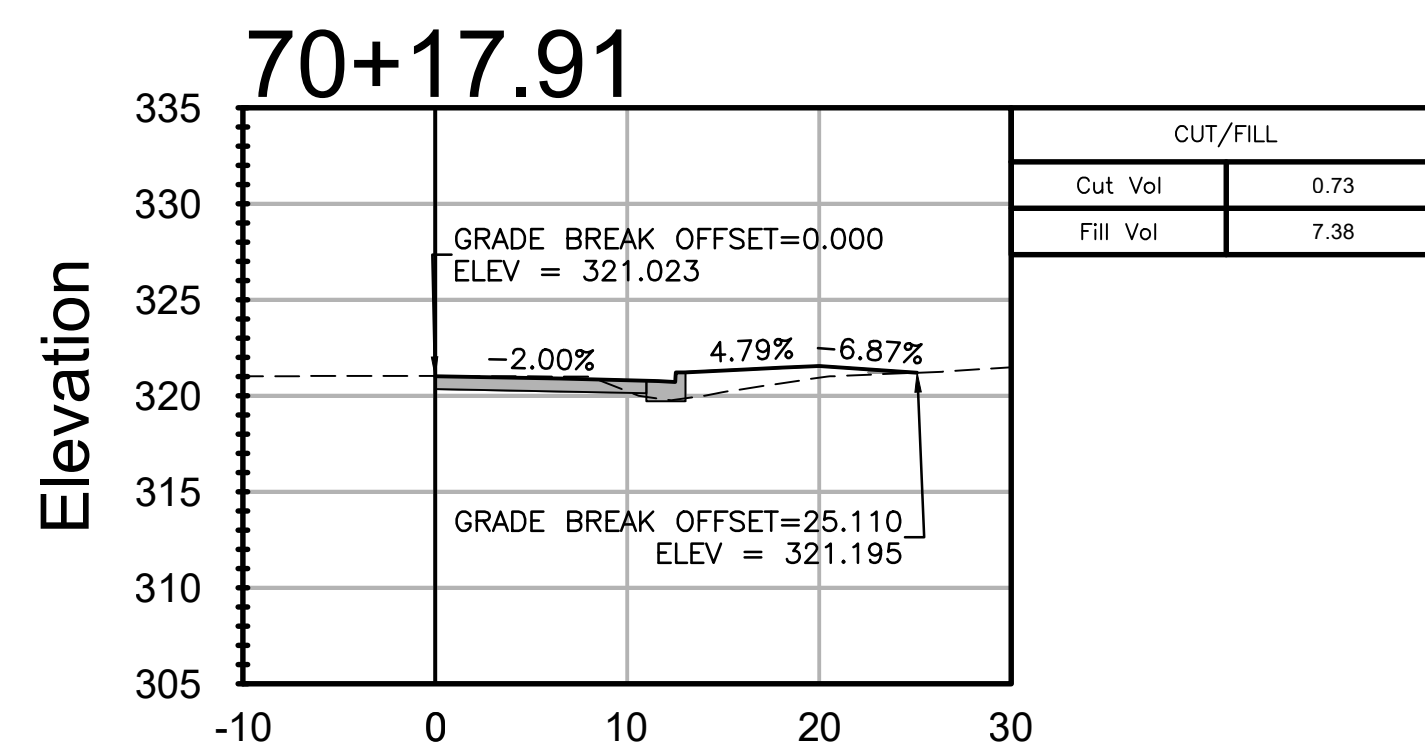
DEPARTMENT OF PUBLIC WORKS
 CIVIL ENGINEERING
 701 W. MARKHAM
 LITTLE ROCK, ARKANSAS 72201



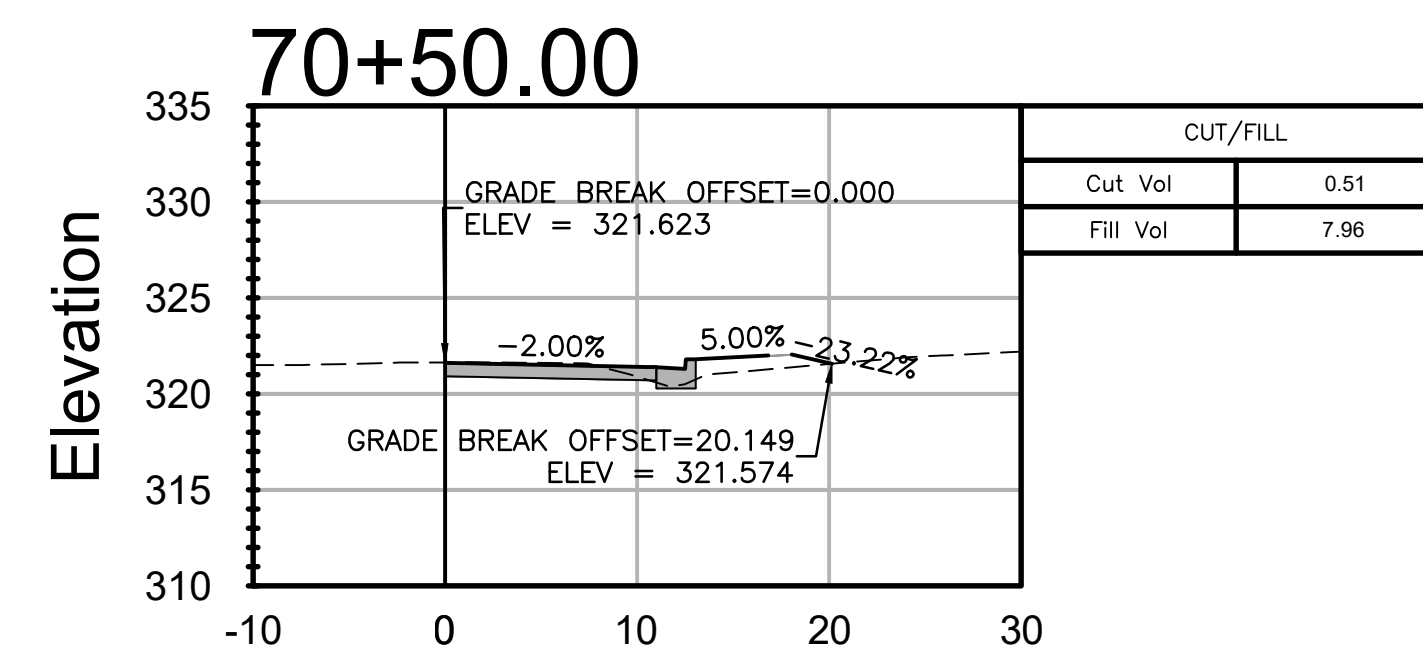

DRAWN BY	BY
DESIGNED	BK
CHECKED	BK
DATE	10-11-2017
SCALE	N.T.S.
PROJECT NO.	CLR 16-1-ST-70
SHEET NO.	C9



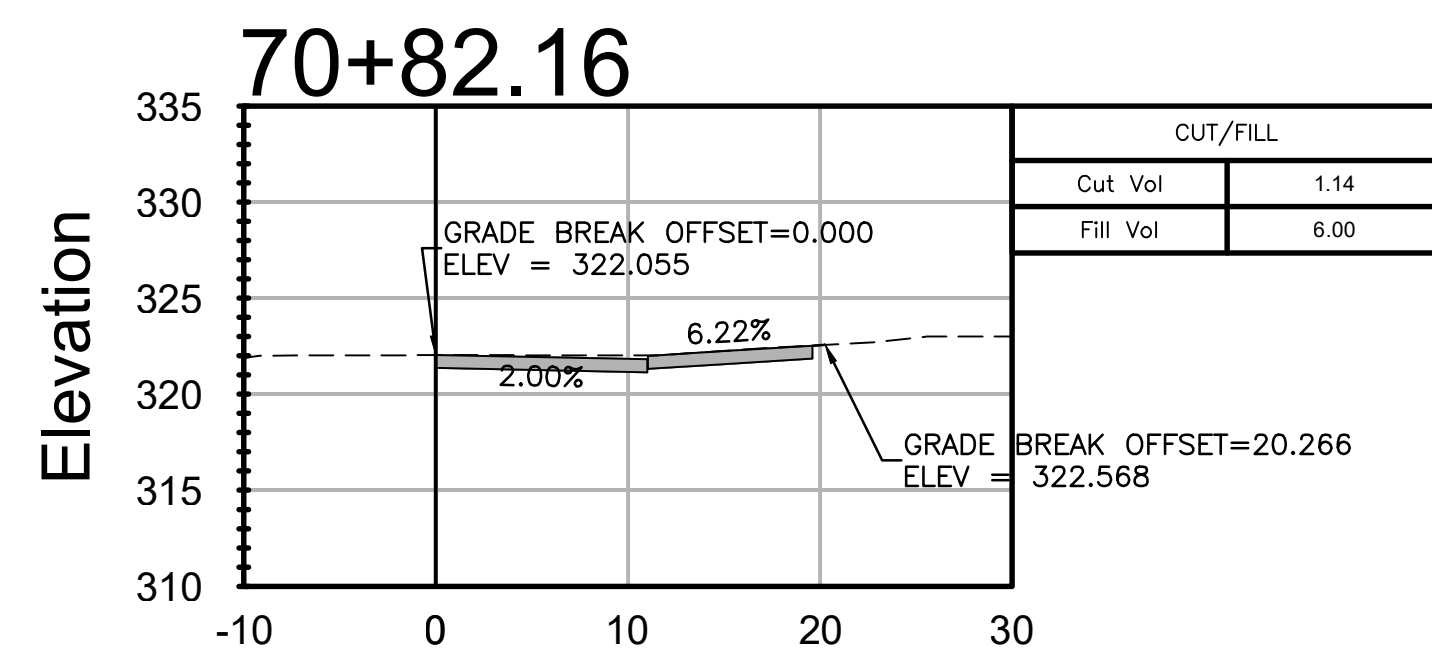
STA 70+00.00
EQUALS STA. 13+48.20 BROWN STREET



STA 70+17.91



STA 70+50.00

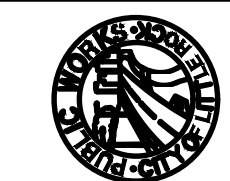


STA 70+82.16

REVISIONS	DATE

CITY OF LITTLE ROCK, ARKANSAS
BROWN ST. FROM 24TH TO ASHER

23RD STREET CROSS SECTIONS

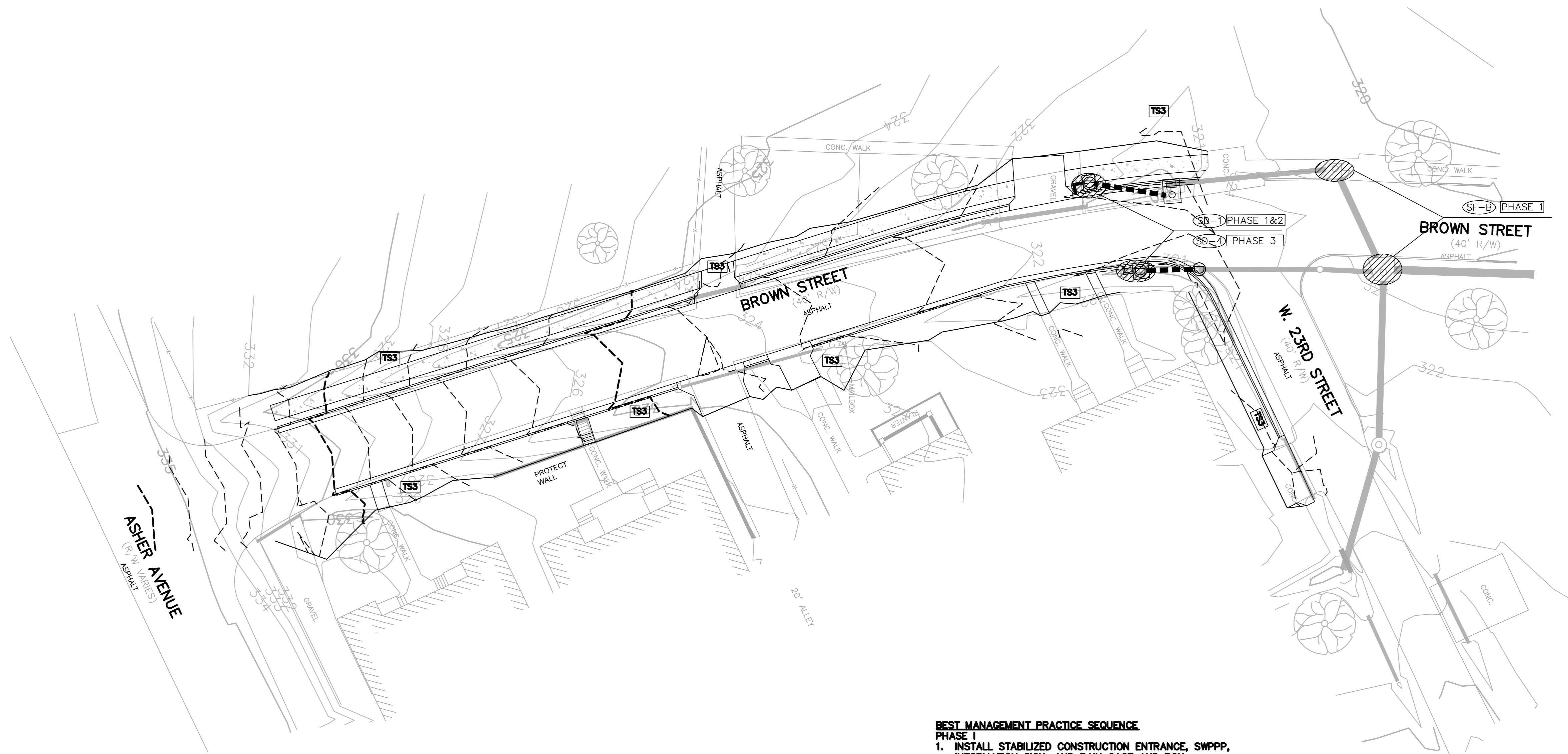


DEPARTMENT OF PUBLIC WORKS
CIVIL ENGINEERING
701 W. MARKHAM
LITTLE ROCK, ARKANSAS 72201

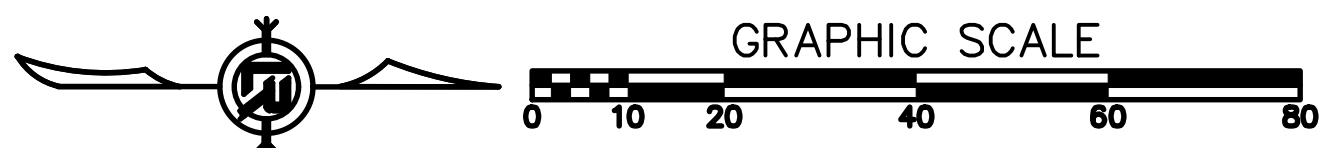


DRAWN BY
BY
DESIGNED
BK
CHECKED
BK
DATE
10-11-2017
SCALE
N.T.S.
PROJECT NO.
CLR 16-1-ST-70
SHEET NO.

C10



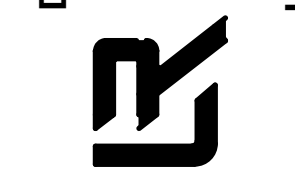
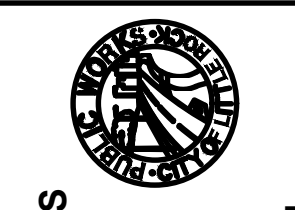
- BEST MANAGEMENT PRACTICE SEQUENCE**
- PHASE I**
1. INSTALL STABILIZED CONSTRUCTION ENTRANCE, SWPPP, INFORMATION SIGN, AND RAIN GAGE AND BOX.
 2. INSTALL TEMPORARY PARKING AND CONCRETE WASHOUT.
 3. INSTALL APPROPRIATE INLET PROTECTION DEVICES ON EXISTING INLETS.
 4. NOTIFY CITY THAT BMP ARE READY FOR INSPECTION.
- PHASE II**
1. BEGIN SITE DEMOLITION, CLEARING AND GRUBBING.
 2. INSTALL STORM SEWERS, CURB AND CUTTERS.
 3. INSTALL APPROPRIATED INLET PROTECTION DEVICES ON NEW INLETS.
 4. INSTALL TEMPORARY SOILS STABILIZATION AS REQUIRED.
- PHASE III**
1. CONTINUE SITE GRADING.
 2. PREPARE SITE FOR PAVING.
 3. PAVE NEW STREETS AND SIDEWALKS.
 4. INSTALLATION OF PERMANENT STABILIZATION OVER ALL AREAS
 5. REMOVE BMP.



REVISIONS	DATE

CITY OF LITTLE ROCK, ARKANSAS
 BROWN ST. IMPROVEMENTS
 EROSION CONTROL PLAN

DEPARTMENT OF PUBLIC WORKS
 CIVIL ENGINEERING
 701 W. MARKHAM
 LITTLE ROCK, ARKANSAS 72201



DRAWN BY	BY
DESIGNED	BK
CHECKED	BK
DATE	10-11-2017
SCALE	1"=20'
PROJECT NO.	CLR 16-1-ST-70
SHEET NO.	C11