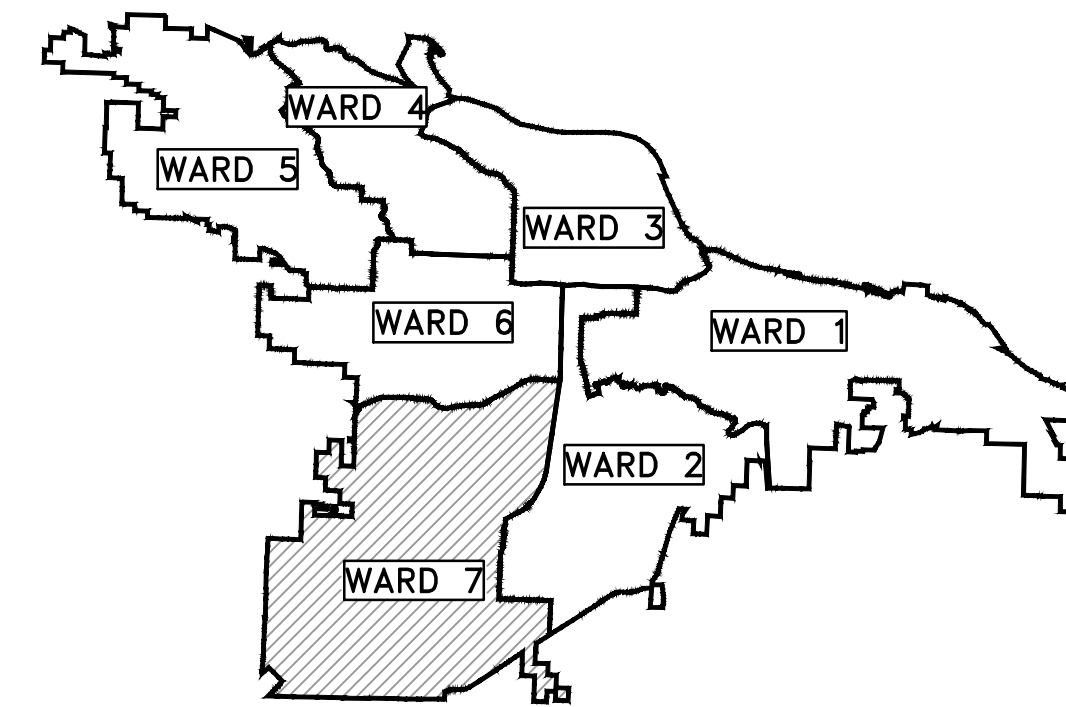


CLR PROJECT #16-7-DR-23 COLONEL GLENN DRAINAGE PROJECT

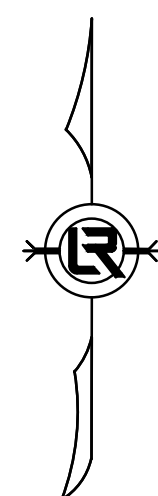


PROJECT LOCATION - WARD 7

SHEET NO.	TITLE
C0	COVER SHEET
C1	LEGEND
C2	OVERALL SITE & EROSION CONTROL PLAN
C3	PLAN AND PROFILE



PROJECT
LOCATION



DEPARTMENT OF PUBLIC WORKS
CIVIL ENGINEERING
701 WEST MARKHAM STREET
LITTLE ROCK, ARKANSAS 72201



Know what's below.
Call before you dig.

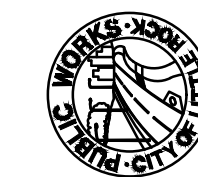
GNE Designing our client's success
GarNat Engineering, LLC

P.O. Box 116 (72018)
2909 MILITARY RD
Benton, AR 72015

Ph (501) 408-4650
Fx (888) 900-3068
garnatengineering@gmail.com

REVISIONS	DATE

CITY OF LITTLE ROCK, ARKANSAS
COLONEL GLENN DRAINAGE
COVER SHEET



DEPARTMENT OF PUBLIC WORKS
CIVIL ENGINEERING
701 W. MARKHAM
LITTLE ROCK, ARKANSAS 72201



DRAWN BY
ATV
DESIGNED
KDV
CHECKED
VJW
DATE
10-03-2017
SCALE
N.T.S.

PROJECT NO.
16-7-DR-23
SHEET NO.
C0

SUMMARY OF QUANTITIES

ITEM NO.	PAY ITEM	QUANTITY	UNIT
2.01	SITE PREPARATION	1	LS
3.40	TOP SOIL	130	CY
10.02	AREA INLET 5' (PW-6)	2	EA
13.30	STORM DRAIN PIPE 30"- SIDE DRAIN	425	LF
14.01	SOLID SOD, BERMUDA	1150	SY
18.01	REMOVE AND REPLACE FENCING (6' WOOD FENCE)	141	LF
18.01	REMOVE AND REPLACE FENCING (4' CHAIN LINK)	136	LF
18.45	RIPRAP	5	CY
19.01	FINAL CLEANUP	1	LS
24.06	SEDIMENT BARRIER, SILT FENCE (E11)	275	LF
24.15	DROP INLET SILT FENCE (E-7)	40	LF
26.10	TRENCH EXCAVATION & SAFETY	1	LS
52.00	PROJECT INFORMATION KIOSK	1	LS
606.05	FLARED END SECTION, 30"	1	EA

EXISTING	PROPOSED
IRON ROD	○ IR
PK NAIL	○ PK
R.R. SPIKE	○ RR(Sp)
CONC. MONUMENT	□ CM
WATER VALVE	⊗ WV
WATER METER	□ WM
FIRE HYDRANT	⊕ FH
GAS METER	⊕ GM
GAS VALVE	⊕ GV
CLEAN-OUT	○ CO
GUARD POST (BOLLARD)	● GP
SIGN POST	⊥
BENCHMARK	⊕
STORM SEWER MANHOLE	⊕
SANITARY SEWER MANHOLE	⊕
TELEPHONE MANHOLE	⊕
ELECTRIC MANHOLE	⊕
TELEPHONE BOX	⊕
ELECTRIC BOX	⊕
CABLE BOX	⊕
UTILITY POLE	⊕
GUY WIRE	⊕
LIGHT POLE	⊕
POST OR POLE (TYPE AS NOTED)	⊕
MAILBOX	⊕
DECIDUOUS TREE	⊕
EVERGREEN/CONIFEROUS TREE	⊕
BUSH	⊕
PROPERTY LINE	— — — — —
SETBACK LINE	— — — — —
EASEMENT LINE	— — — — —
CURB	— — — — —
FENCE	— X — X —
OVERHEAD UTILITY	— OHP — OHP —
UNDERGROUND TELEPHONE	— UGT — UGT — UGT —
UNDERGROUND ELECTRIC	— UGE — UGE — UGE —
WATER LINE	— 8"W — 8"W — 8"W —
SEWER LINE	— S — S — S — S —
GAS LINE	— GAS — GAS — GAS —
STORM SEWER/CULVERT	— 24" CMP/RCP/DIP —
CONTOUR LINE	— 650 —
CONTOUR	○ 25.00
SPOT ELEVATION	○ 25.50
SPOT CURB ELEVATION	○ 25.00
STORM SEWER – PIPE	— — — — —
STORM SEWER – MITERED END SECTION	— — — — —
STORM SEWER – GRATE INLET	— — — — —
STORM SEWER – JUNCTION BOX	— — — — —
STORM SEWER – FLARED END SECTION	— — — — —
STORM SEWER – HEADWALL	— — — — —
STORM SEWER – INLET WITH SINGLE EXTENSION	— — — — —
STORM SEWER – INLET WITH DOUBLE EXTENSION	— — — — —
STORM SEWER – AREA INLET	— — — — —
GRADE BREAK LINE	— — — — —
HIGH POINT	HP
LOW POINT	LP
CUT LINE	— C —
FILL LINE	— F —
SANITARY SEWER PIPE	— — — — —
SANITARY SEWER MANHOLE	⊕
CURB	— — — — —
CONCRETE	— — — — —
CONSTRUCTION – ENTRANCE/EXIT	⊕
CHECK DAM	⊕
DIVERSION BERM	⊕
DOWNDRAIN STRUCTURE – TEMPORARY	⊕
ROCK DAM	⊕
SEDIMENT BARRIER – SILT FENCE	⊕
SEDIMENT BARRIER – GRAVEL RING	⊕
SEDIMENT BARRIER – BLOCK & GRAVEL	⊕
SEDIMENT BARRIER – BLOCK	⊕
TEMPORARY SEDIMENT BASIN	⊕
SILT FENCE – TYPE A	⊕
SILT FENCE – TYPE B	⊕
SILT FENCE – TYPE C	⊕
STORM DRAIN OUTLET PROTECTION	⊕
SURFACE ROUGHENING	⊕
DISTURBED AREA STABILIZATION –TEMPORARY STABILIZATION	⊕
DISTURBED AREA STABILIZATION –TEMPORARY GRASSING	⊕
DISTURBED AREA STABILIZATION –PERMANENT GRASSING	⊕
MATting/BLANKETS	⊕

REVISIONS	DATE

CITY OF LITTLE ROCK, ARKANSAS
COLONEL GLENN DRAINAGE
 LEGEND

DEPARTMENT OF PUBLIC WORKS
 CIVIL ENGINEERING
 701 W. MARKHAM
 LITTLE ROCK, ARKANSAS 72201

STATE OF ARKANSAS
 REGISTERED PROFESSIONAL ENGINEER
 K. KELLY VANLANDINGHAM
 NO. 7996
 10.5.17

DRAWN BY
 ATV
 DESIGNED
 KDV
 CHECKED
 VJW
 DATE
 10-03-2017
 SCALE
 N.T.S.
 PROJECT NO.
 16-7-DR-23
 SHEET NO.
C1

PHASE I BMPS:

1. FILE A SHORT TERM ACTIVITY AUTHORIZATION (STAA) FOR ENTRY OF MACHINERY INTO WATER, DEBRIS REMOVAL FROM WATER OR WET LAND; BRIDGE CONSTRUCTION; OTHER WITH ARKANSAS DEPARTMENT OF ENVIRONMENTAL QUALITY.

PHASE II BMPS

1. SEED ALL DENUDED AREAS. SEED ALL DISTURBED AREAS WITHIN 10 DAYS OF COMPLETION OF THE WORK.

2. INSTALL DROP INLET SILT FENCE AND OTHER SILT FENCE

PHASE III BMPS

1. INSTALL FINAL SEEDING, SOD AND COMPLETE FINAL CLEANUP.

PROJECT CLOSEOUT:

1. REMOVE ALL TEMPORARY EROSION AND SEDIMENT CONTROLS DEVICES. (ONLY WHEN SITE IS STABILIZED).

WATER & SANITARY SEWER LINES ARE APPROXIMATELY LOCATED BASED UPON SURFACE DATA AND INFORMATION FROM WWW.PAGIS.ORG ON THEIR WATER/WASTEWATER UTILITIES VIEWER

OWNERSHIPS (PARCELS) SHOWN ARE DERIVED FROM INFORMATION PROVIDED THROUGH THE ARKANSAS DATA CLEARINGHOUSE (GEOSTOR), AND ARE NOT SURVEYED PROPERTY LINES.



REVISIONS	DATE

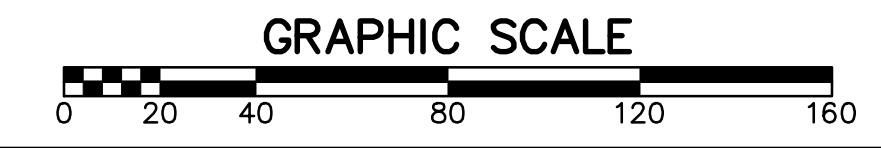
CITY OF LITTLE ROCK, ARKANSAS
COLONEL GLENN DRAINAGE

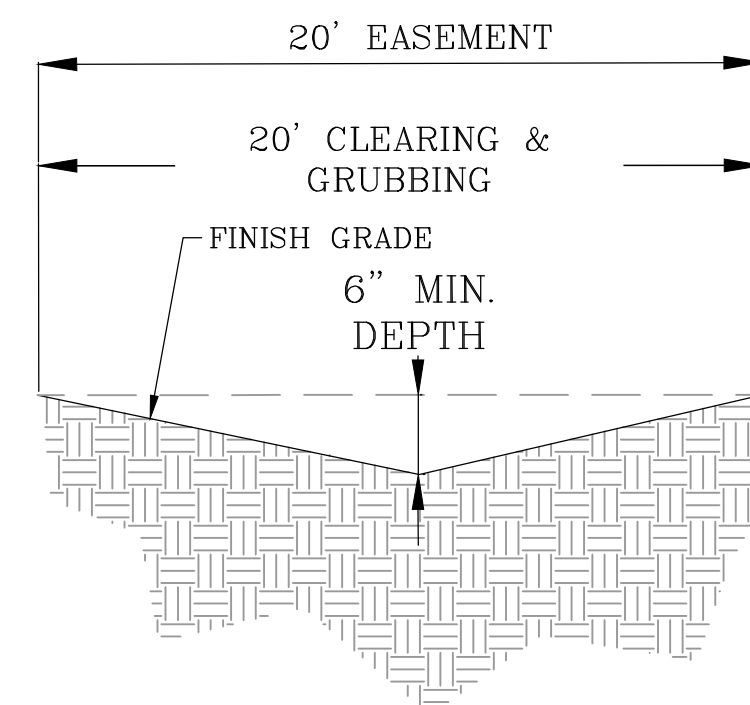
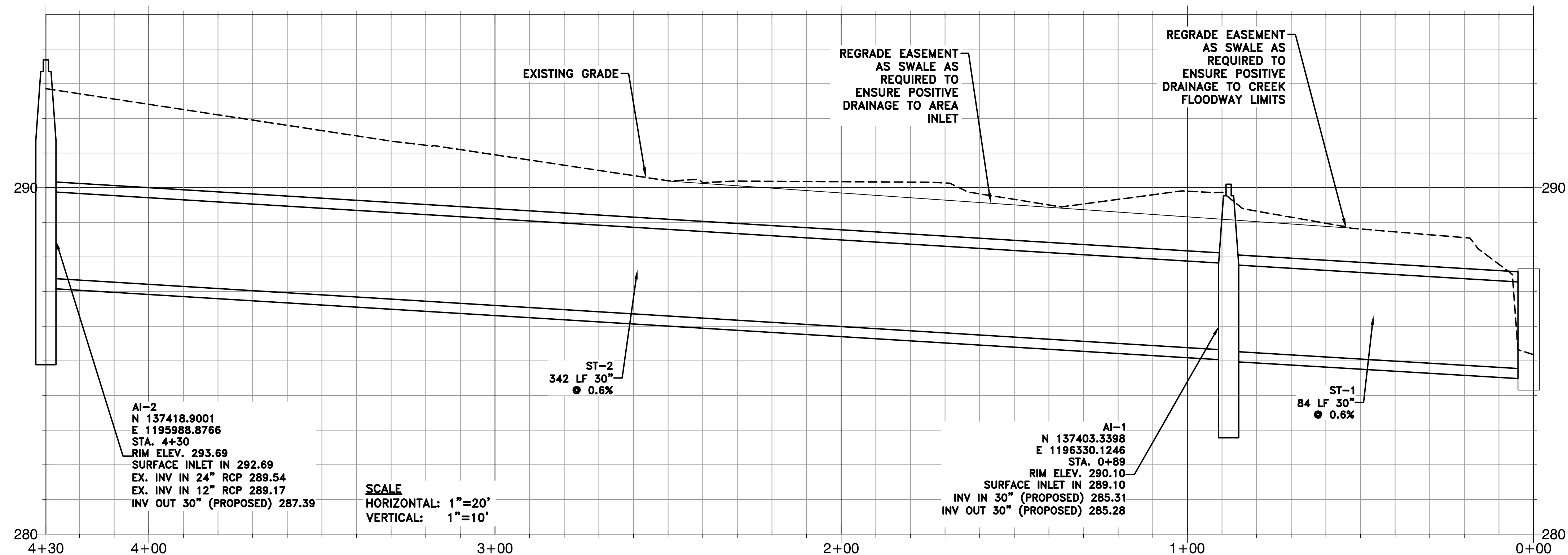
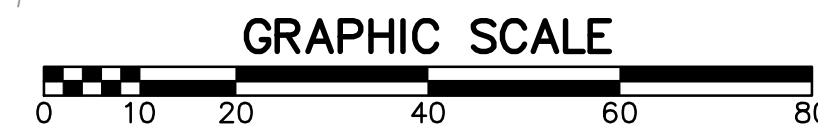
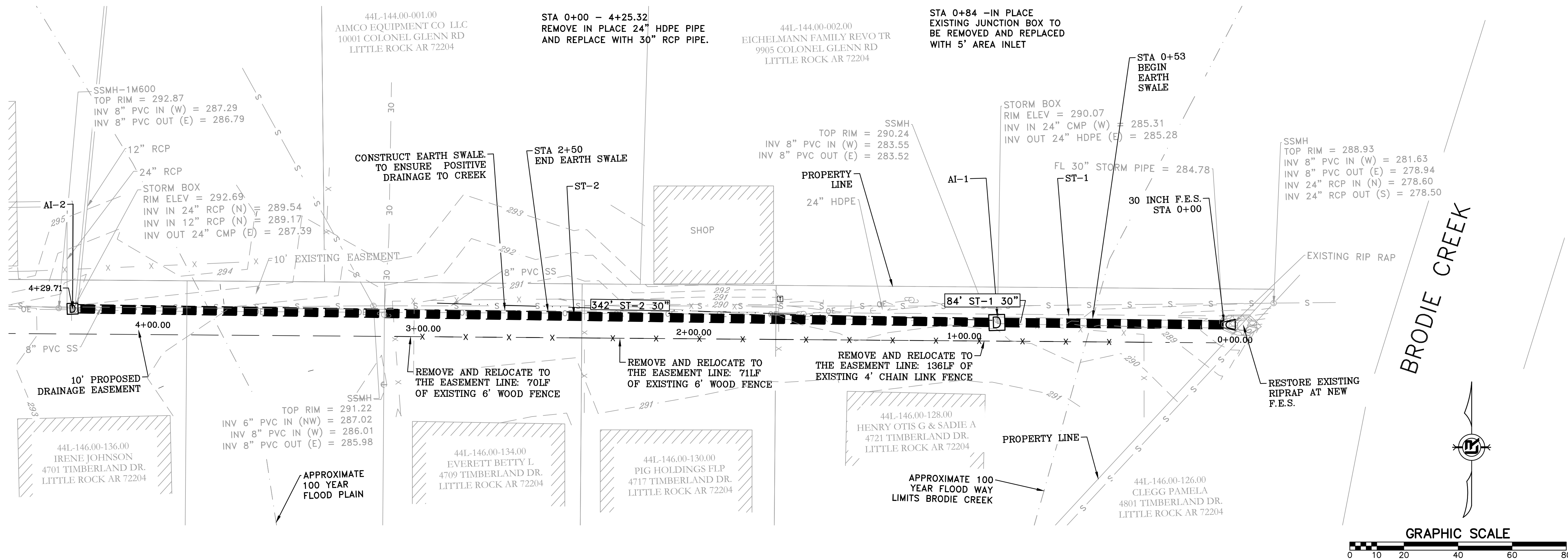
OVERALL SITE AND EROSION CONTROL PLAN

DEPARTMENT OF PUBLIC WORKS
CIVIL ENGINEERING
701 W. MARKHAM
LITTLE ROCK, ARKANSAS 72201

STATE OF ARKANSAS
REGISTERED PROFESSIONAL ENGINEER
KELLY VANLANDINGHAM
NO. 7996
10-5-17

DRAWN BY ATV
DESIGNED KDV
CHECKED VJW
DATE 10-03-2017
SCALE 1"=40' (22X34)
PROJECT NO. 16-7-DR-23
SHEET NO. C2





- NOTES:**
1. CLEAR & GRUBB LIMITS OF EXISTING & PROPOSED DRAINAGE EASEMENTS FROM BRODIE CREEK WEST TO JB-1
 2. RESTORE DISTURBED AREA WITH TOPSOIL (IF NEEDED) AND SOLID SODDING.

REVISIONS	DATE

CITY OF LITTLE ROCK, ARKANSAS
COLONEL GLENN DRAINAGE
 PLAN - PROFILE

DEPARTMENT OF PUBLIC WORKS
 CIVIL ENGINEERING
 701 W. MARKHAM
 LITTLE ROCK, ARKANSAS 72201



DRAWN BY
ATV

DESIGNED
KDV

CHECKED
VJW

DATE
10-03-2017

SCALE
1"=20' (22X34)

PROJECT NO.
16-7-DR-23

SHEET NO.
C3