

L.R.P.D.

COMPSTAT

November 15 2018



*The
Badge Of
Honor*



LITTLE ROCK POLICE DEPARTMENT

November

What is COMPSTAT?

COMPSTAT stands for Comparative Statistics. In a weekly meeting of police command staff, divisional supervisors and other personnel, all parties discuss recent Part I criminal activity and propose strategies to address the situation.

Each meeting covers a three week period, and rotates between the three patrol divisions – Downtown, Northwest, and Southwest. All three divisions provide maps tracking activity in seven different crime types, but only one division presents per week.

Other divisions also report – Special Operations Division, Special Investigations Division, Major Crimes Division, and the Headquarters Division – Communications Section. Those divisions reports are not included in this report because they may contain sensitive law enforcement information.

Glossary and Notes

Part I Incident - The FBI standard for its *Crime in the United States* report, issued each fall. Part I violent crimes are murder or non-negligent homicide, rape, robbery and aggravated assault. Part I property crimes are burglary, larceny, and auto theft.

**In our COMPSTAT report, we only include maps of non-domestic aggravated assault incidents, but all aggravated assault incidents are included on the charts.*

Part I Offense Comparison City Wide

Jan 1 - November 12 2018 v 2017 - with 2-year avg.

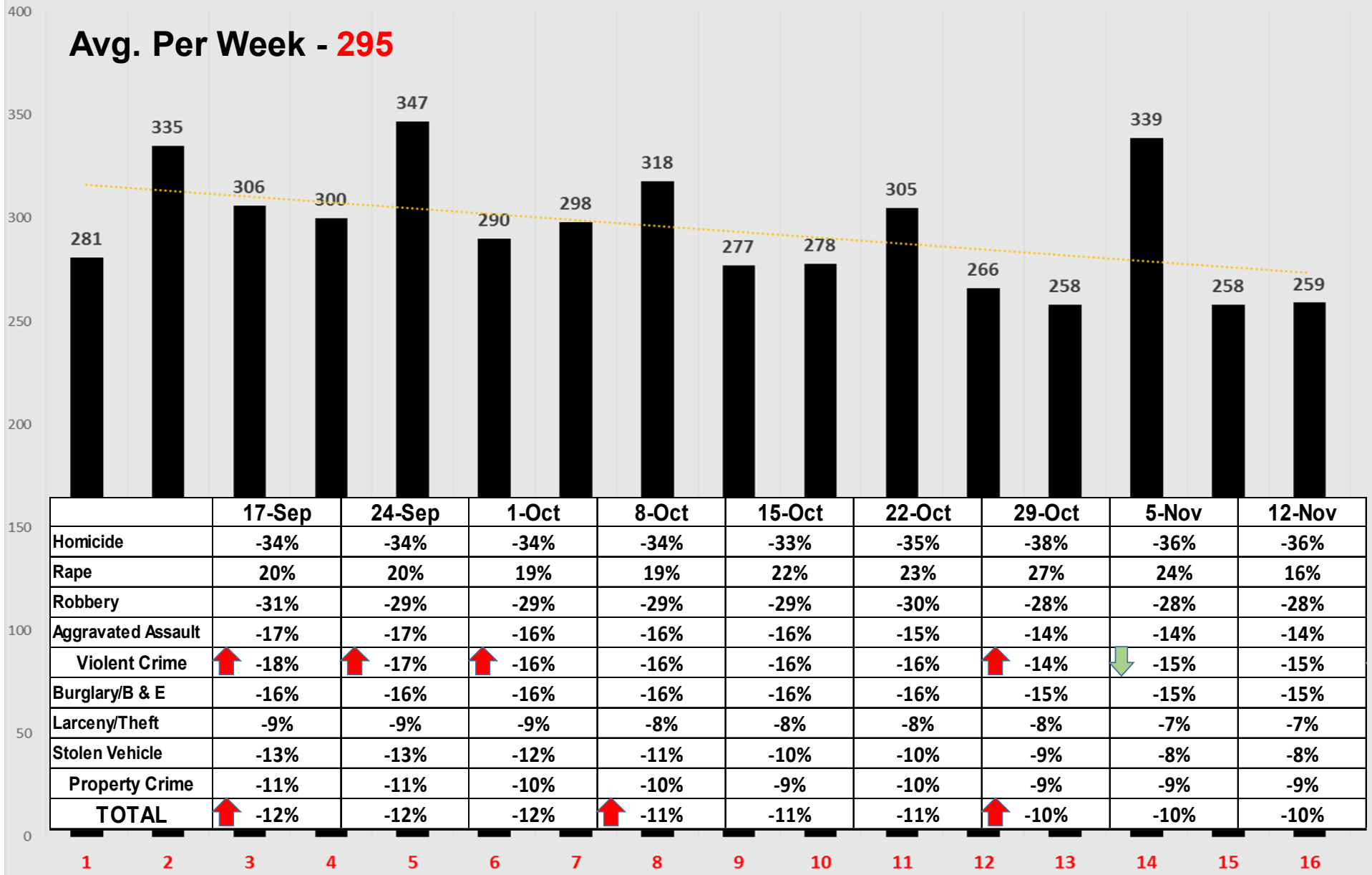
PART I INCIDENT	TOTAL		2018 v 2017	Last 2 Years		2018 by Division		
	2018	2017	% change	Avg.	% change	12th ST	NW	SW
Homicide	29	45	-36%	39.0	-26%	10	9	10
Rape	163	141	16%	138.0	18%	67	43	53
Robbery	301	417	-28%	496.0	-39%	138	77	86
Aggravated Assault	1960	2288	-14%	2076.0	-6%	769	506	685
Violent Crime	2453	2891	-15%	2749.0	-11%	984	635	834
Burglary/B & E	1730	2038	-15%	1942.0	-11%	521	595	614
Larceny/Theft	8554	9208	-7%	9169.0	-7%	2692	3714	2148
Stolen Vehicle	910	988	-8%	1002.5	-9%	303	311	296
Property Crime	11194	12234	-9%	12113.5	-8%	3516	4620	3058
TOTAL	13647	15125	-10%	14863	-8%	4500	5255	3892
Percentage of Total YTD - by Division						32.97%	38.51%	28.52%

These figures are based on offenses reported to LRPD and are retrieved from the Department's Records Management System.

The figures may include some offenses that may be reclassified after further investigation.

City Wide Number of Part I Offenses - Last 16 Weeks

Avg. Per Week - 295



Part I Offense Comparison - 12th St. Station Division

Jan 1 - November 12 2018 v 2017 - with 2-year avg.

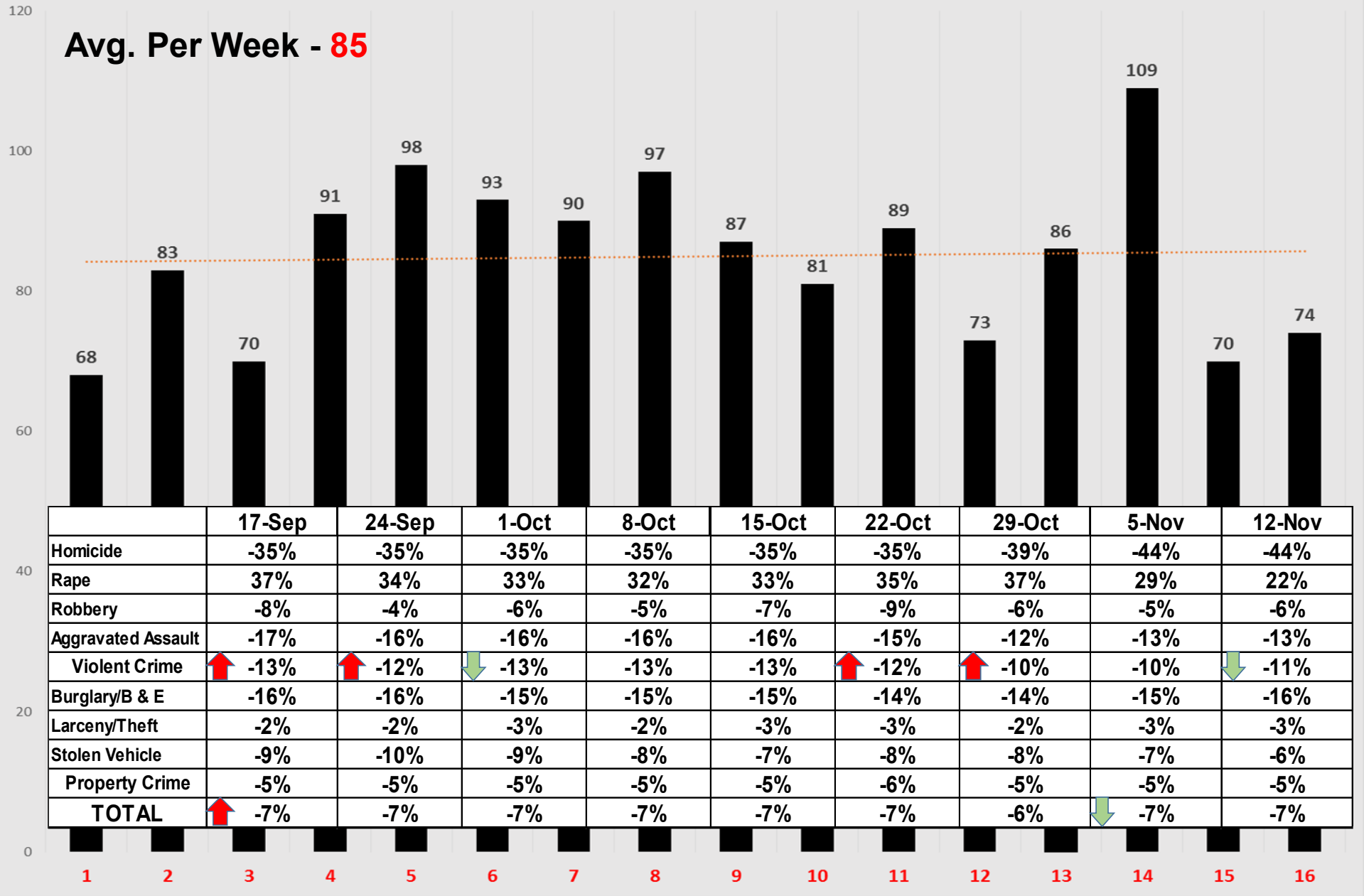
PART I INCIDENT	12th ST		2018 v 2017	Last 2 Years		YTD 2018 - BY DISTRICT								
	2018	2017	% change	Avg.	% change	40	41	42	43	50	51	52	53	54
Homicide	10	18	-44%	15.5	-35%	0	0	0	1	0	0	3	2	4
Rape	67	55	22%	57.0	18%	5	5	2	5	1	16	7	14	12
Robbery	138	147	-6%	173.5	-20%	31	7	4	5	8	10	13	23	37
Aggravated Assault	769	889	-13%	841.0	-9%	57	37	63	37	29	46	140	124	236
Violent Crime	984	1109	-11%	1087.0	-9%	93	49	69	48	38	72	163	163	289
Burglary/B&E	521	618	-16%	601.5	-13%	51	42	30	23	87	20	83	81	104
Larceny/Theft	2692	2770	-3%	2788.0	-3%	412	199	148	132	525	197	297	327	455
Stolen Vehicle	303	323	-6%	337.0	-10%	42	9	37	10	43	19	45	55	43
Property Crime	3516	3711	-5%	3726.5	-6%	505	250	215	165	655	236	425	463	602
TOTAL	4500	4820	-7%	4813.5	-7%	598	299	284	213	693	308	588	626	891

These figures are based on offenses reported to LRPD and are retrieved from the Department's Records Management System.

The figures may include some offenses that may be reclassified after further investigation.

12th St. Station Division Number of Part I Offenses - Last 16 Weeks

Avg. Per Week - 85



Last 16 Weeks – Shots Fired Calls

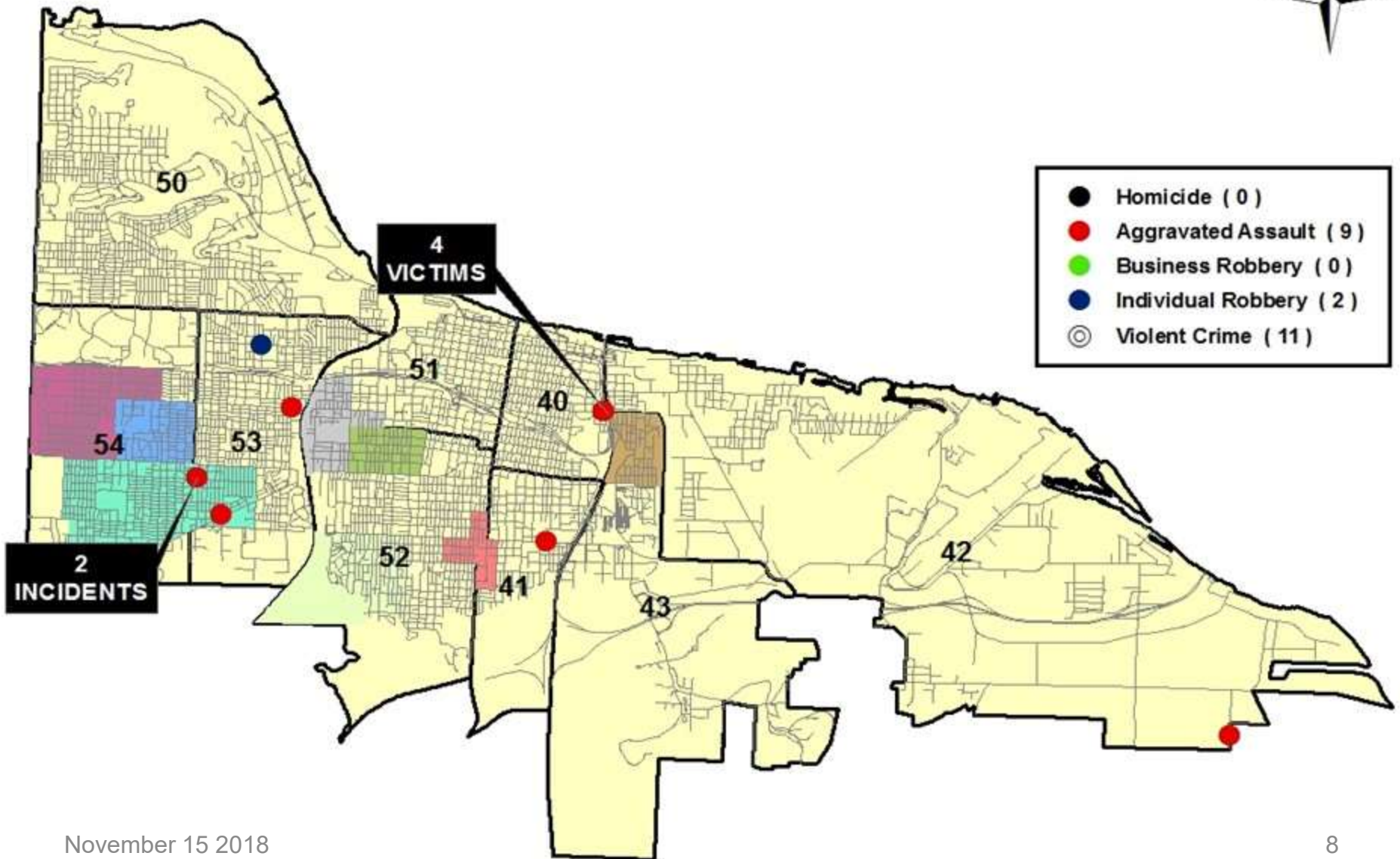
Shots Fired Calls - 12th St. Station



12th Street Station

VIOLENT CRIME

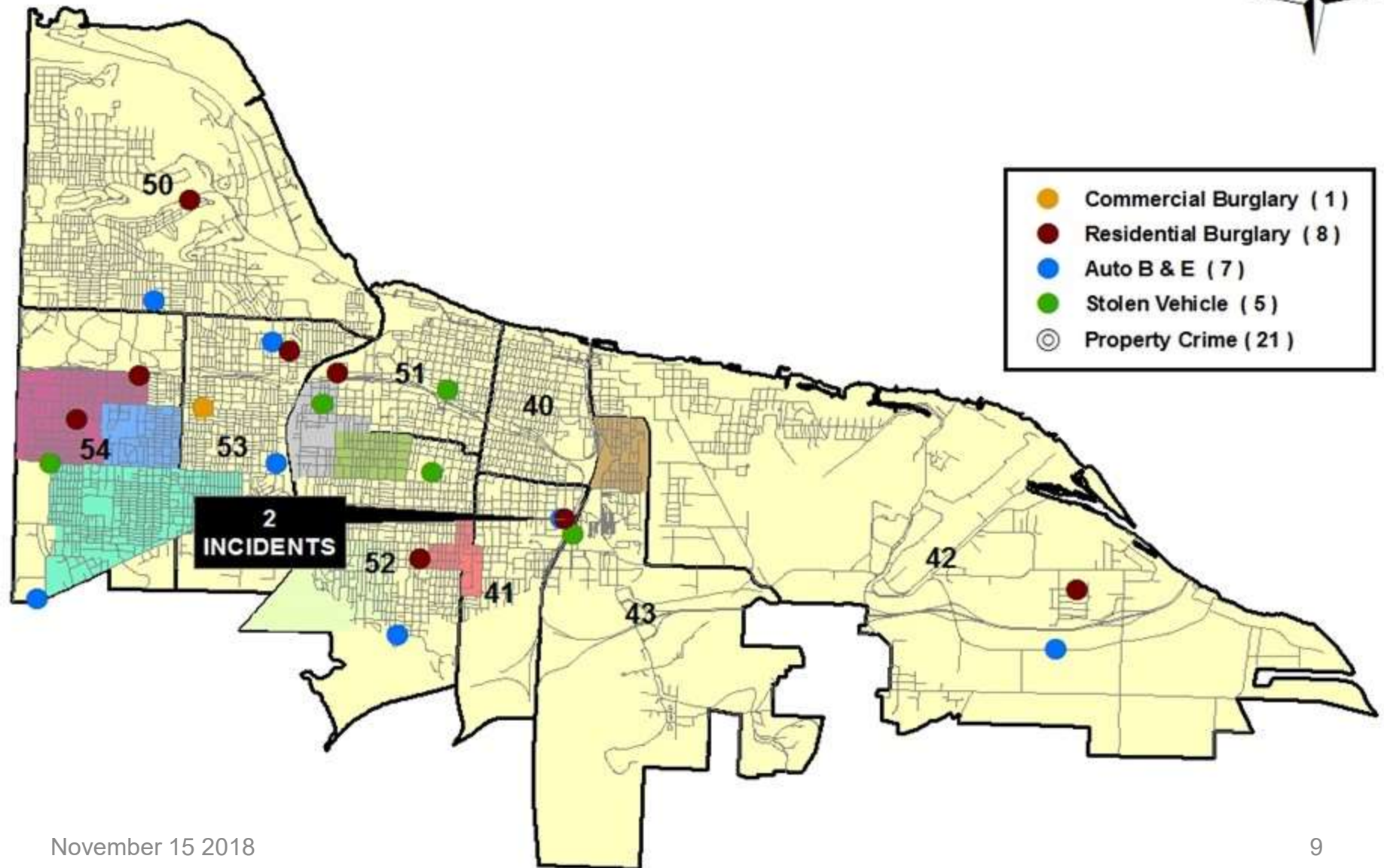
Nov 6 - 12 2018



12th Street Station

PROPERTY CRIME

Nov 6 - 12 2018



Part I Offense Comparison - Northwest

Jan 1 - November 12 2018 v 2017 - with 2-year avg.

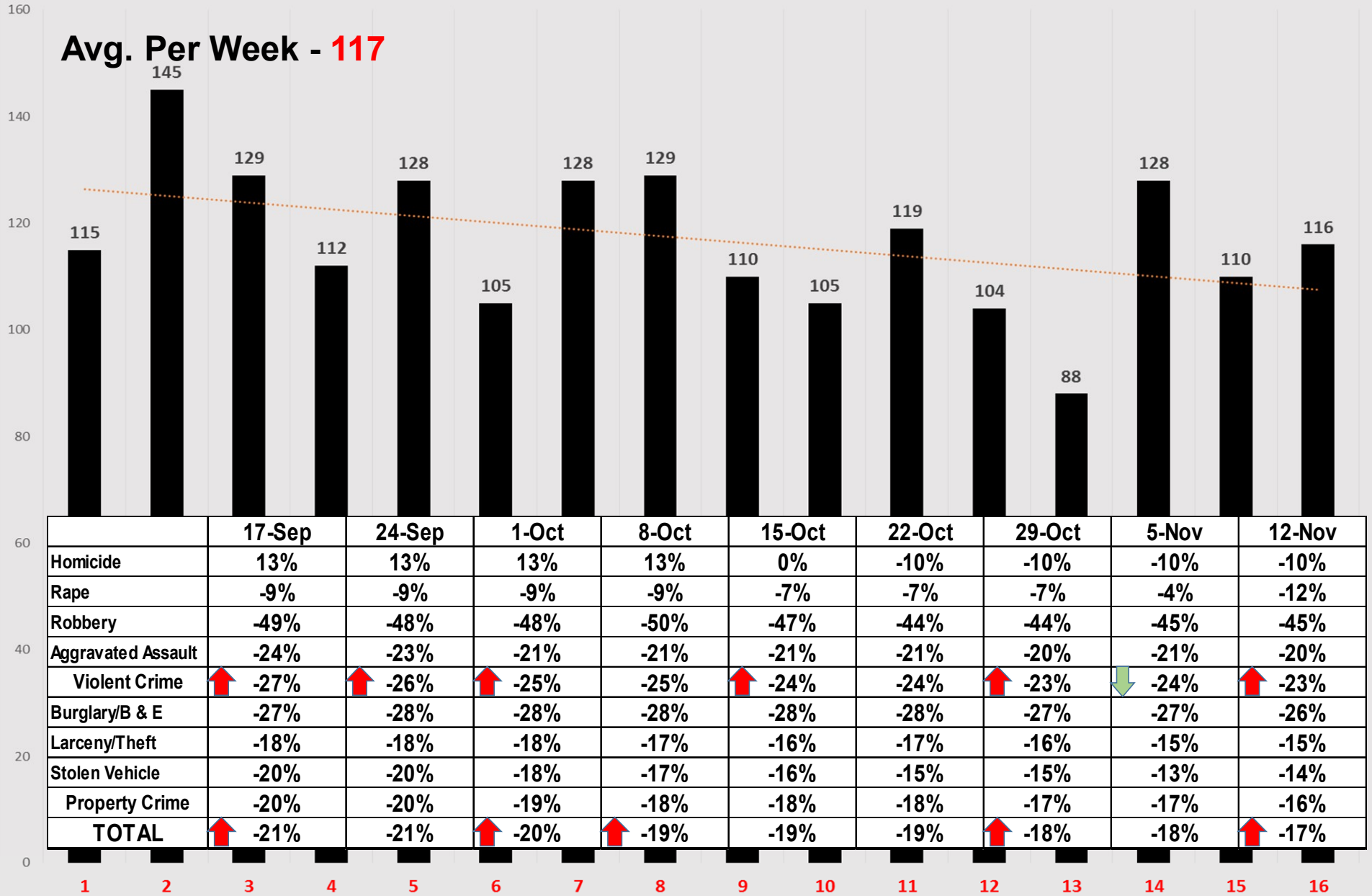
PART I INCIDENT	NW		2018 v 2017	Last 2 Years		YTD 2018 - BY DISTRICT							
	2018	2017	% change	Avg.	% change	60	61	62	63	64	70	71	72
Homicide	9	10	-10%	9.0	0%	0	1	6	1	1	0	0	0
Rape	43	49	-12%	47.5	-9%	5	5	1	9	16	3	3	1
Robbery	77	139	-45%	175.5	-56%	3	7	25	8	18	8	3	5
Aggravated Assault	506	632	-20%	562.5	-10%	44	61	101	60	139	25	63	13
Violent Crime	635	830	-23%	794.5	-20%	52	74	133	78	174	36	69	19
Burglary/B&E	595	802	-26%	757.5	-21%	85	42	82	94	116	50	92	34
Larceny/Theft	3714	4352	-15%	4297.5	-14%	503	254	304	426	862	310	732	323
Stolen Vehicle	311	362	-14%	363.0	-14%	39	31	21	46	82	25	50	17
Property Crime	4620	5516	-16%	5418.0	-15%	627	327	407	566	1060	385	874	374
TOTAL	5255	6346	-17%	6212.5	-15%	679	401	540	644	1234	421	943	393

These figures are based on offenses reported to LRPD and are retrieved from the Department's Records Management System.

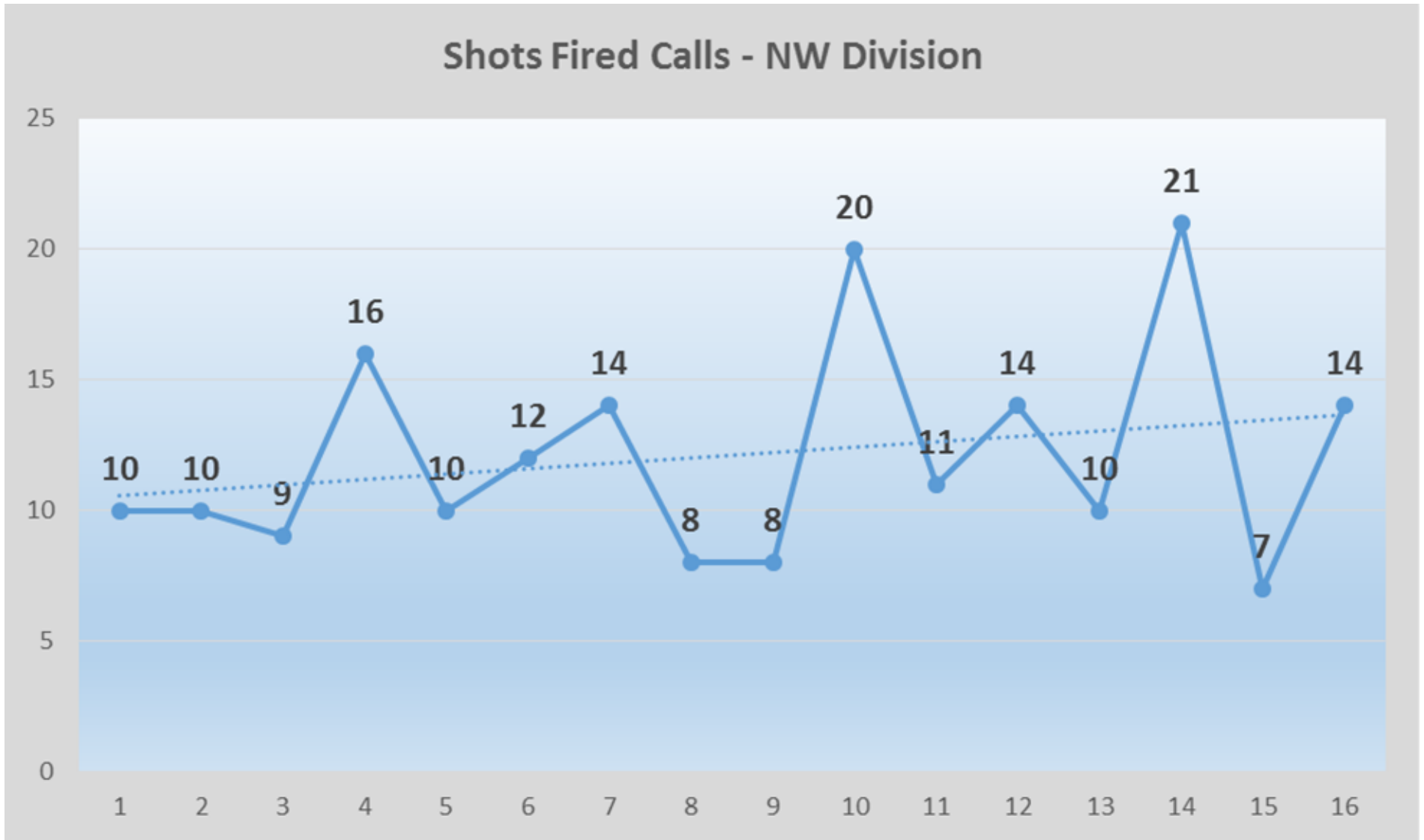
The figures may include some offenses that may be reclassified after further investigation.

NW Division Number of Part Offenses - Last 16 Weeks

Avg. Per Week - 117



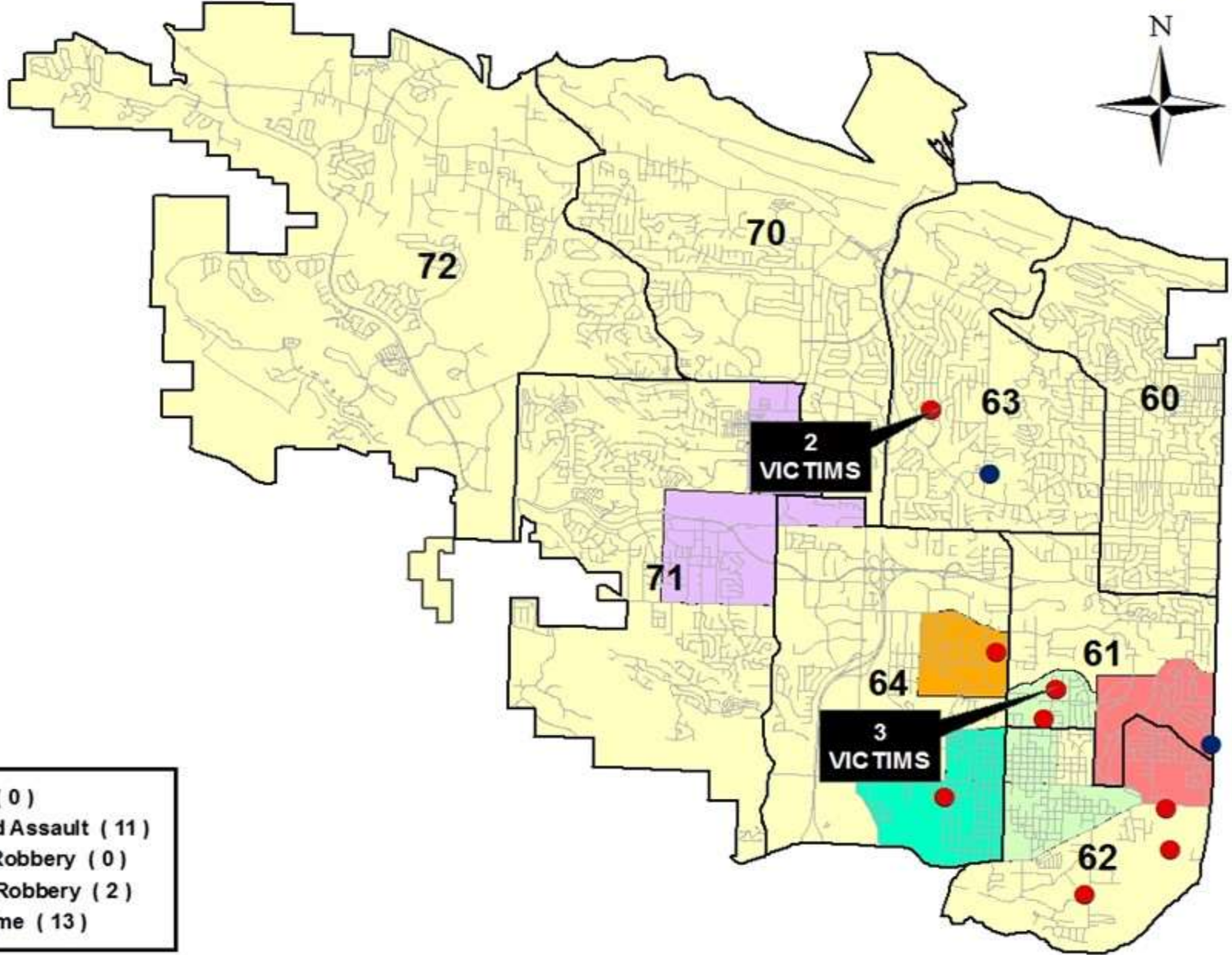
Last 16 Weeks – Shots Fired Calls



Northwest

VIOLENT CRIME

Nov 6 - 12 2018



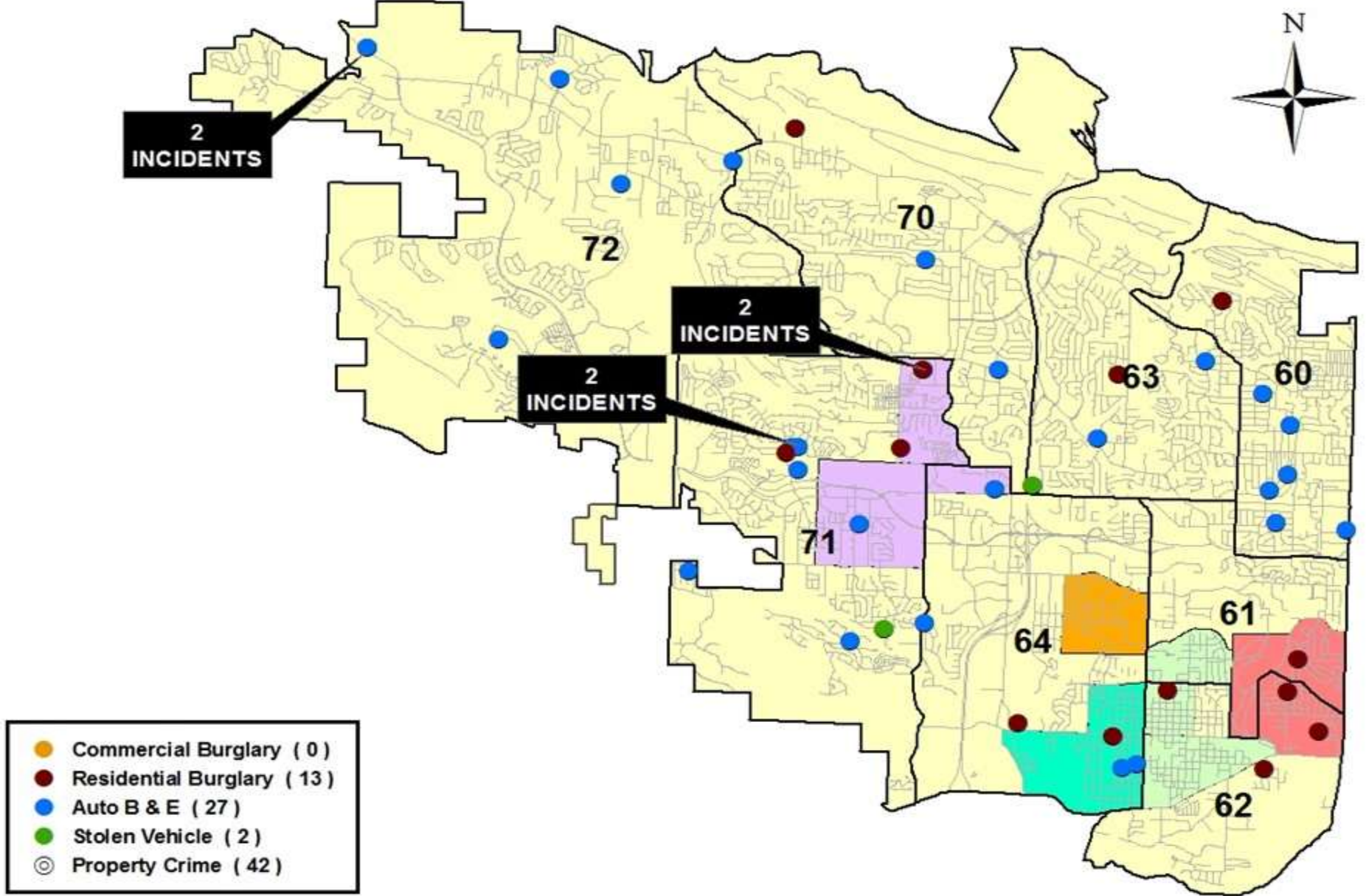
- Homicide (0)
- Aggravated Assault (11)
- Business Robbery (0)
- Individual Robbery (2)
- ⊙ Violent Crime (13)

November 15 2018

Northwest

PROPERTY CRIME

Nov 6 - 12 2018



November 15 2018

Part I Offense Comparison - Southwest

Jan 1 - November 12 2018 v 2017 - with 2-year avg.

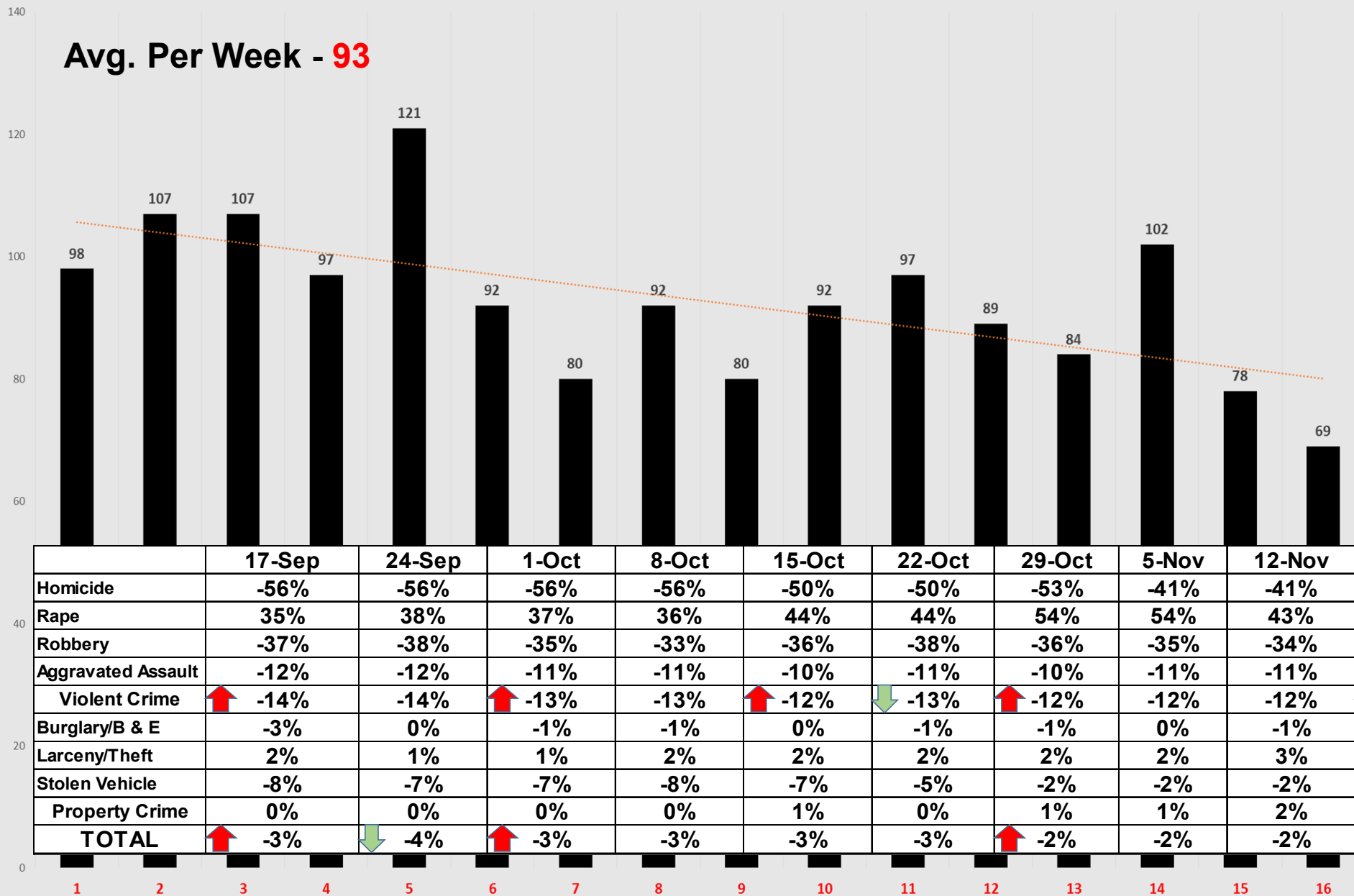
PART I INCIDENT	SW		2018 v 2017	Last 2 Years		YTD 2018 - BY DISTRICT						
	2018	2017	% change	Avg.	% change	80	81	82	90	91	92	93
Homicide	10	17	-41%	14.5	-31%	1	4	0	2	1	0	2
Rape	53	37	43%	33.5	58%	6	10	13	6	9	1	8
Robbery	86	131	-34%	147.0	-41%	7	32	13	4	14	6	10
Aggravated Assault	685	767	-11%	672.5	2%	83	198	148	79	121	15	41
Violent Crime	834	952	-12%	867.5	-4%	97	244	174	91	145	22	61
Burglary/B&E	614	618	-1%	583.0	5%	61	182	86	107	104	19	55
Larceny/Theft	2148	2086	3%	2083.5	3%	261	527	265	264	440	58	333
Stolen Vehicle	296	303	-2%	302.5	-2%	25	72	45	54	55	11	34
Property Crime	3058	3007	2%	2969.0	3%	347	781	396	425	599	88	422
TOTAL	3892	3959	-2%	3836.5	1%	444	1025	570	516	744	110	483

These figures are based on offenses reported to LRPD and are retrieved from the Department's Records Management System.

The figures may include some offenses that may be reclassified after further investigation.

SW Division Number of Part I Offenses - Last 16 Weeks

Avg. Per Week - 93



Last 16 Weeks – Shots Fired Calls

