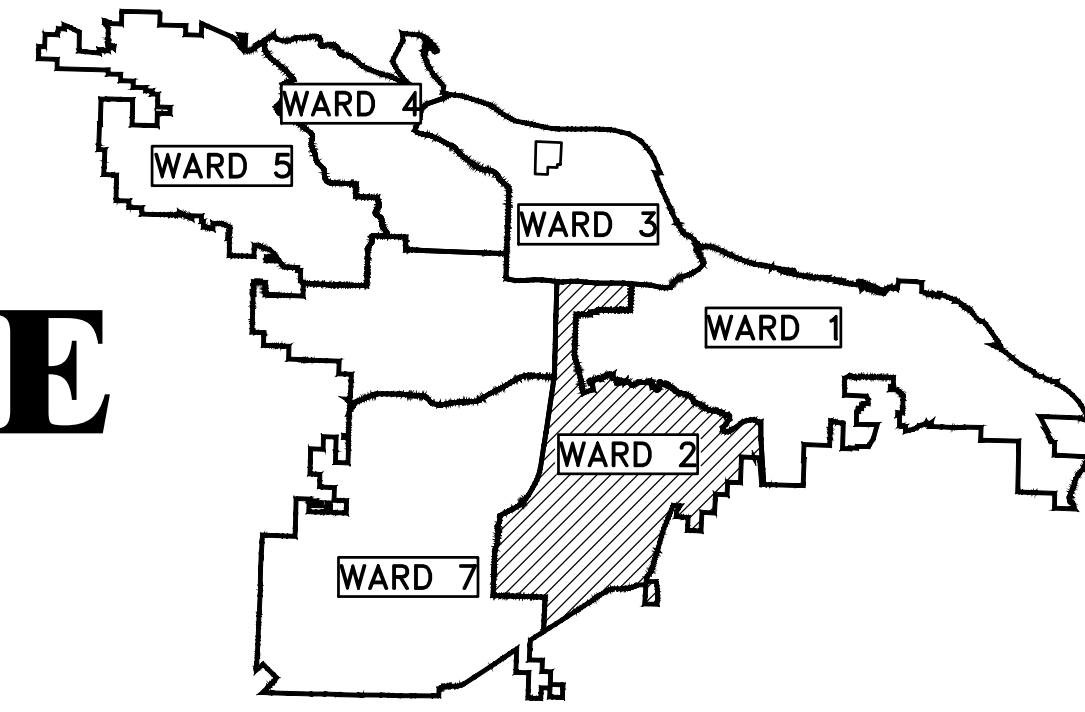


CLR PROJECT # 2-17-DR-57

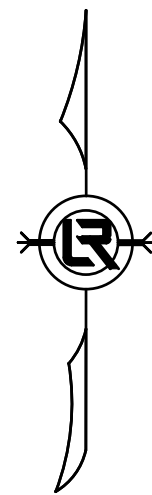
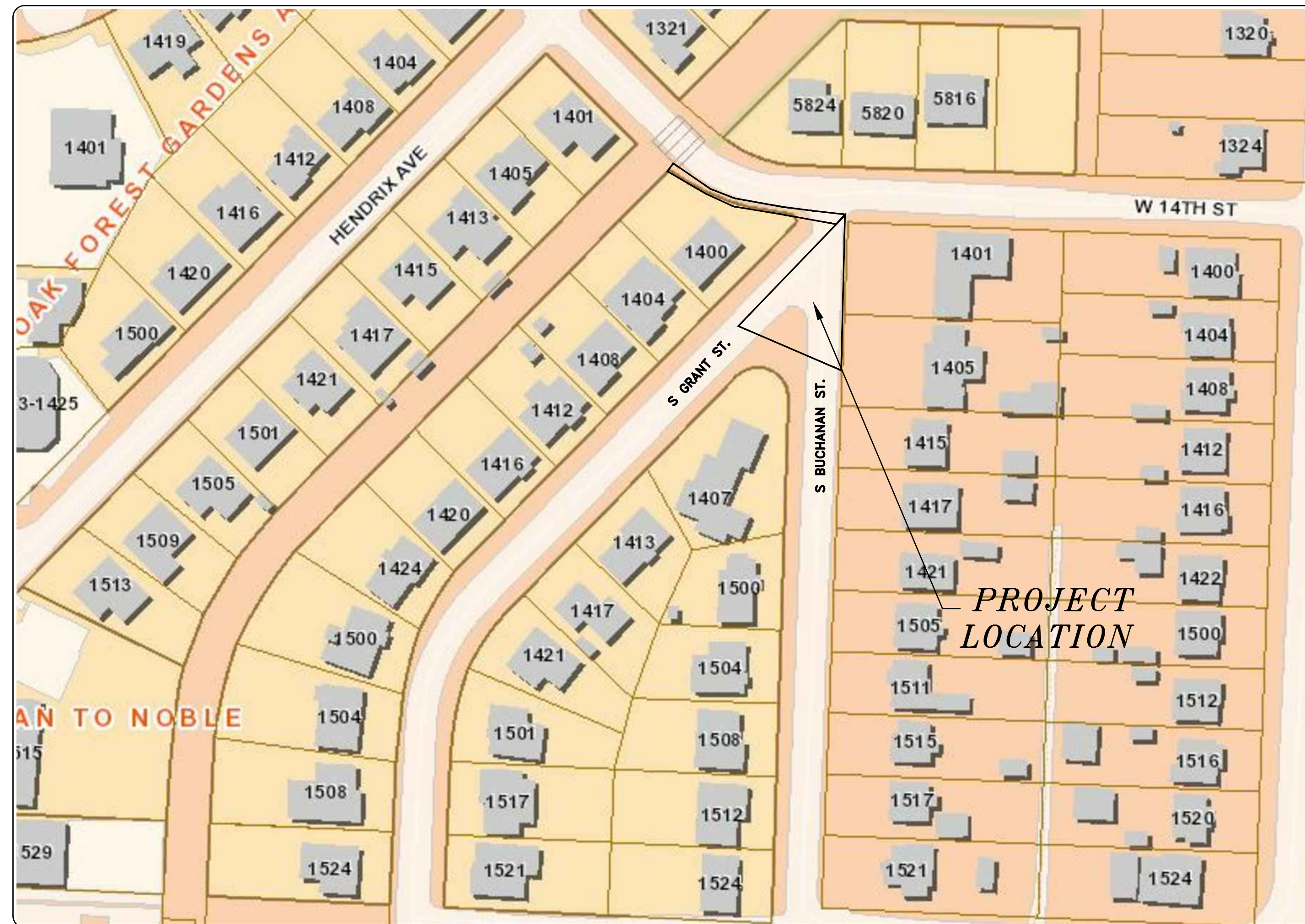
GRANT & BUCHANAN STREET DRAINAGE

S GRANT ST AND S BUCHANAN ST TO W 14 ST



PROJECT LOCATION - WARD 2

SHEET NO.	TITLE
C1	COVER SHEET
C2	CENTERLINE FIELD TIES/LAYOUT SHEET
C3	GENERAL NOTES, LEGENDS & QUANTITIES
C4	TYPICAL SECTIONS
C5	GRADING AND DRAINAGE PLAN
C6	STORM DRAIN PLAN & PROFILE
C7	ROADWAY PLAN & PROFILE
C8	EROSION CONTROL PLAN
C9	CROSS SECTIONS - 1
C10	CROSS SECTIONS - 2



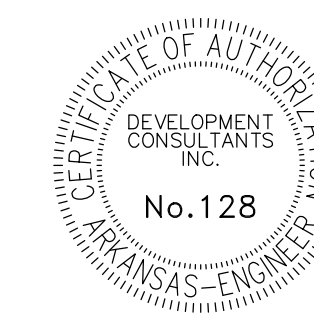
2019-2021
BOND PROGRAM

DEPARTMENT OF PUBLIC WORKS
CIVIL ENGINEERING
701 WEST MARKHAM STREET
LITTLE ROCK, ARKANSAS 72201



DEVELOPMENT
CONSULTANTS INC.

2200 NORTH RODNEY
PARHAM RD., SUITE 220
LITTLE ROCK, AR
72212-4155
PH. 501-221-7880



Know what's below.
Call before you dig.

REVISIONS	DATE

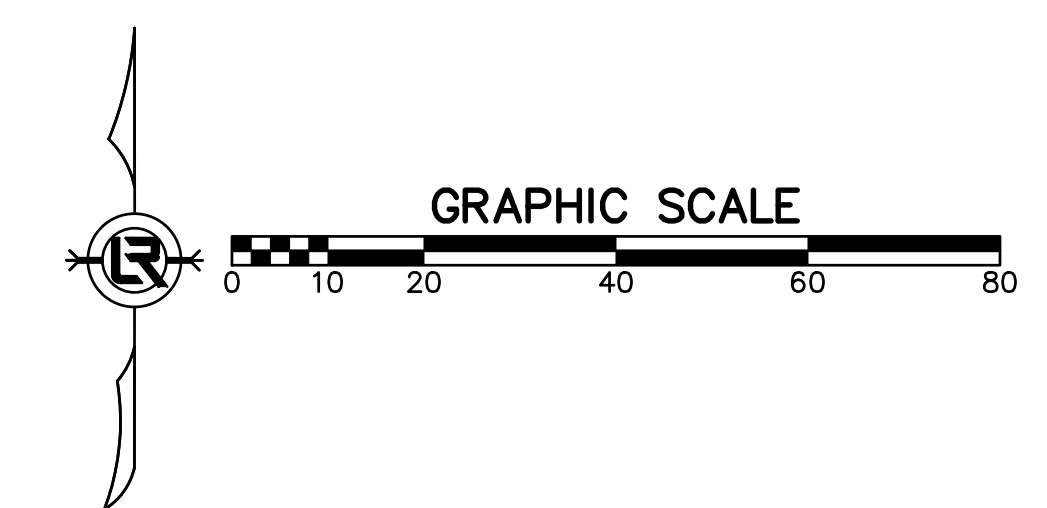
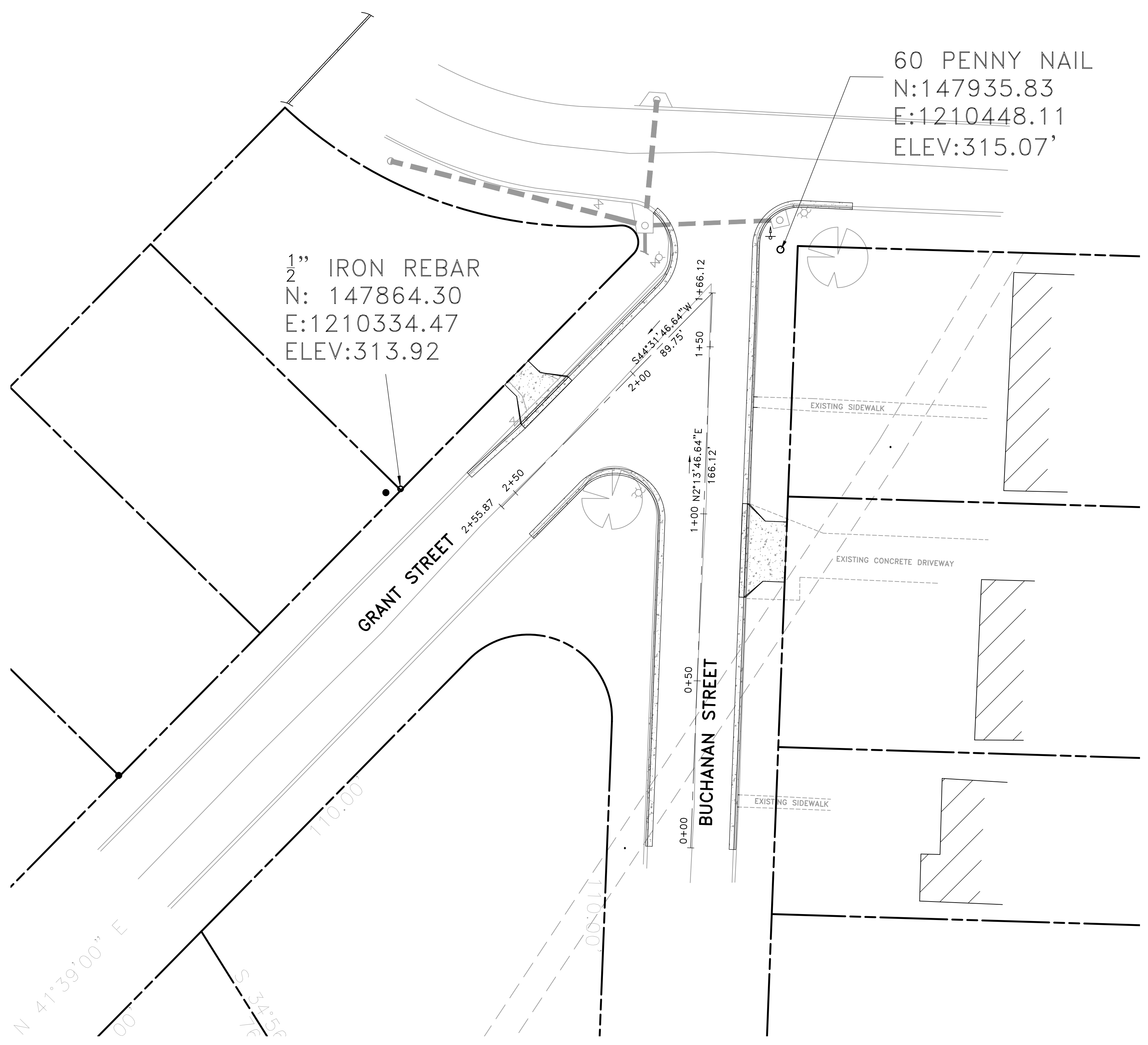
CITY OF LITTLE ROCK, ARKANSAS
GRANT & BUCHANAN STREET DRAINAGE

COVER SHEET

DEPARTMENT OF PUBLIC WORKS
CIVIL ENGINEERING
701 W. MARKHAM
LITTLE ROCK, ARKANSAS 72201



DRAWN BY
IM
DESIGNED
IM
CHECKED
BK
DATE
04/26/2019
SCALE
N.T.S
PROJECT NO.
CLR # 2-17-DR-57
SHEET NO.
C1



REVISIONS	DATE

CITY OF LITTLE ROCK, ARKANSAS
GRANT & BUCHANAN STREET DRAINAGE
CENTERLINE FIELD TIES/LAYOUT SHEET

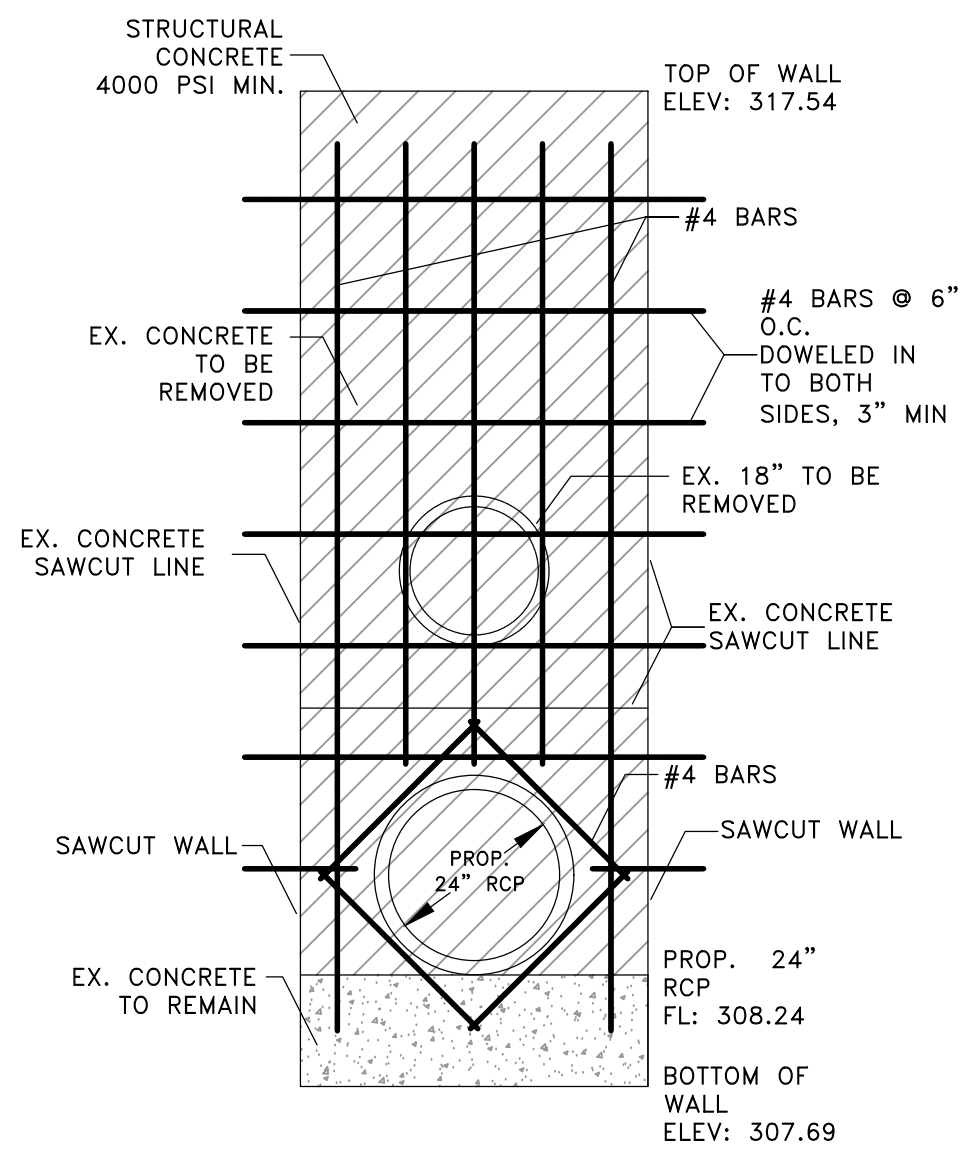
DEPARTMENT OF PUBLIC WORKS
CIVIL ENGINEERING
701 W. MARKHAM
LITTLE ROCK, ARKANSAS 72201

DRAWN BY	IM
DESIGNED	IM
CHECKED	BK
DATE	04/26/2019
SCALE	1:20
PROJECT NO.	CLR # 2-17-DR-57
SHEET NO.	C2

REVISIONS	DATE

PRICING OF ESTIMATED QUANTITIES			
CLR#2-17-DR-57			
Grant and Buchanan Street Drainage			
		4-Mar-18	
ITEM #	ITEM DESCRIPTION	UNIT	QUANTITY
2.01	SITE PREPARATION	LS	1
3.01	UNCLASSIFIED EXCAVATION	CY	560
3.06	BORROW MATERIAL	CY	500
4.01	AGGREGATE BASE COURSE	TON	262
6.01	ACHM SURFACE COURSE	TON	130
7.06	CONCRETE DRIVEWAY (6" THICK) STANDARD FINISH	SF	476
8.03	CURB AND GUTTER (CLASS 3)	LF	464
10.01	JUNCTION BOX, 4' BOX	EA	2
10.04	CURB INLET, 4' BOX	EA	3
10.04	CURB INLET, 4' BOX - PW2	EA	1
10.07	WING 3' EXTENSION	EA	7
10.14	WING 10' EXTENSION	EA	1
10.80	REBUILD INLET TOP	EA	1
13.18C	STORM DRAIN PIPE, 18" CROSS DRAIN	LF	118
13.18P	STORM DRAIN PIPE, 18" SIDE DRAIN	LF	59
13.24P	STORM DRAIN PIPE, 24" SIDE DRAIN	LF	87
14.02	SOLID SODDING, SPECIAL	SY	370
19.01	FINAL CLEANUP	LS	1
24.06	SEDIMENT BARRIER, SILT FENCE (SD1)	EA	4
24.08	SEDIMENT BARRIER, BLOCK AND GRAVEL (SD3)	EA	2
24.11	SILT FENCE - TYPE A (SFA)	LF	332
SP-1	DRAINAGE OUTFALL	EA	1

EXISTING	PROPOSED
IRON ROD	PROPOSED CONTOUR
PK NAIL	PROPOSED SPOT ELEVATION
R.R. SPIKE	PROPOSED SPOT CURB ELEVATION
CONC. MONUMENT	STORM SEWER - PIPE
WATER VALVE	STORM SEWER - MITERED END SECTION
WATER METER	STORM SEWER - GRATE INLET
FIRE HYDRANT	STORM SEWER - JUNCTION BOX
GAS METER	STORM SEWER - FLARED END SECTION
GAS VALVE	STORM SEWER - HEADWALL
CLEAN-OUT	STORM SEWER - SINGLE WING
GUARD POST (BOLLARD)	STORM SEWER - DOUBLE WING
SIGN POST	STORM SEWER - AREA INLET
BENCHMARK	GRADE BREAK LINE
STORM SEWER MANHOLE	HIGH POINT
SANITARY SEWER MANHOLE	LOW POINT
TELEPHONE MANHOLE	CUT LINE
ELECTRIC MANHOLE	FILL LINE
TELEPHONE BOX	SANITARY SEWER PIPE
ELECTRIC BOX	SANITARY SEWER MANHOLE
CABLE BOX	PROPOSED CURB
UTILITY POLE	PROPOSED CONCRETE
GUY WIRE	CONSTRUCTION - ENTRANCE/EXIT
LIGHT POLE	CHECK DAM
POST OR POLE (TYPE AS NOTED)	DIVERSION BERM
MAILBOX	DOWNDRAIN STRUCTURE - TEMPORARY
DECIDUOUS TREE	ROCK DAM
EVERGREEN/CONIFEROUS TREE	SEDIMENT BARRIER - SILT FENCE
BUSH	SEDIMENT BARRIER - GRAVEL RING
PROPERTY LINE	SEDIMENT BARRIER - BLOCK & GRAVEL
SETBACK LINE	SEDIMENT BARRIER - BLOCK
EASEMENT LINE	TEMPORARY SEDIMENT BASIN
CURB	SILT FENCE - TYPE A
FENCE	SILT FENCE - TYPE B
OVERHEAD ELECTRIC	SILT FENCE - TYPE C
OVERHEAD TELEPHONE	STORM DRAIN OUTLET PROTECTION
OVERHEAD CABLE	SURFACE ROUGHENING
UNDERGROUND TELEPHONE	DISTURBED AREA STABILIZATION - TEMPORARY STABILIZATION
UNDERGROUND ELECTRIC	DISTURBED AREA STABILIZATION - TEMPORARY GRASSING
UNDERGROUND CABLE	DISTURBED AREA STABILIZATION - PERMANENT GRASSING
WATER LINE	MATting/BLANKETS
SEWER LINE	
GAS LINE	
STORM SEWER/CULVERT	
EDGE OF WOODS	
CONTOUR LINE	
FLOOD PLAIN	
FLOOD WAY	



SP-1

GENERAL NOTES

THIS PROJECT AREA LIES IN THE 100 YEAR FLOODPLAIN ZONE AE AS DEPICTED ON FIRMPANEL 0501810452G

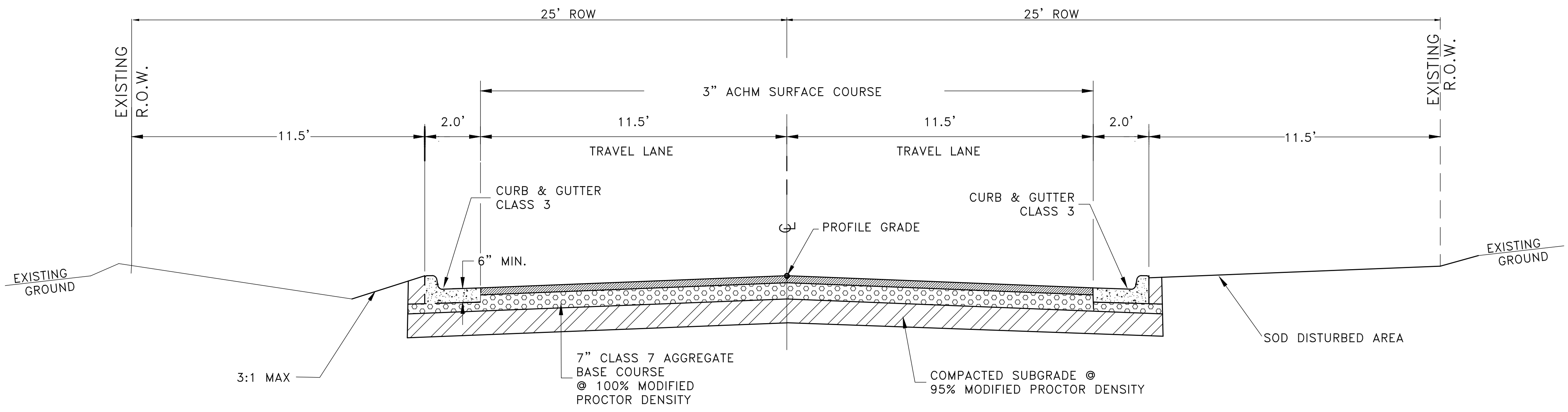
CITY OF LITTLE ROCK, ARKANSAS
GRANT & BUCHANAN STREET DRAINAGE
GENERAL NOTES, LEGENDS & QUANTITIES

DEPARTMENT OF PUBLIC WORKS
CIVIL ENGINEERING
701 W. MARKHAM
LITTLE ROCK, ARKANSAS 72201



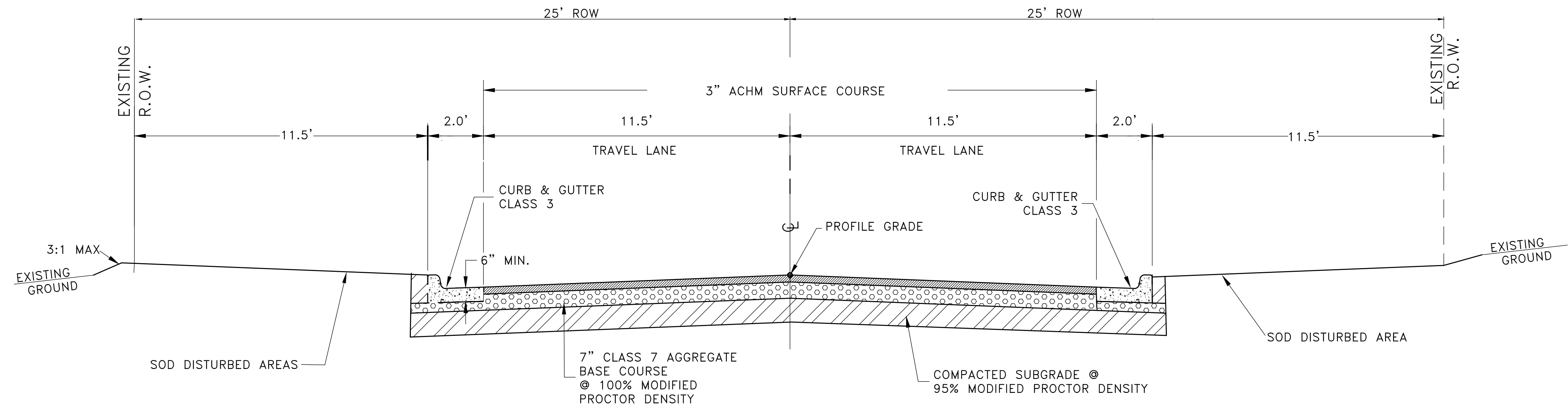
DRAWN BY	IM
DESIGNED	IM
CHECKED	BK
DATE	04/26/2019
SCALE	N.T.S
PROJECT NO.	CLR # 2-17-DR-57
SHEET NO.	C3

REVISIONS	DATE



TYPICAL SECTION - S BUCHANAN ST

Sta 0+00 to Sta. 0+97.62



TYPICAL SECTION - S BUCHANAN ST

Sta 2+34.62 TO 2+55.87

CITY OF LITTLE ROCK, ARKANSAS
GRANT & BUCHANAN STREET DRAINAGE
TYPICAL SECTIONS

DEPARTMENT OF PUBLIC WORKS
CIVIL ENGINEERING
701 W. MARKHAM
LITTLE ROCK, ARKANSAS 72201

DRAWN BY	IM
DESIGNED	IM
CHECKED	BK
DATE	04/26/2019
SCALE	N.T.S
PROJECT NO.	CLR # 2-17-DR-57
SHEET NO.	C4

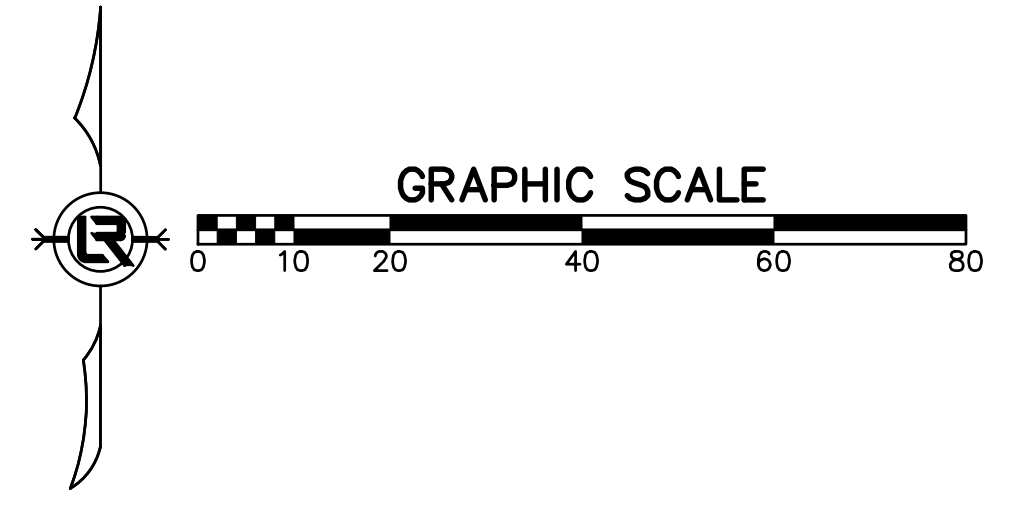
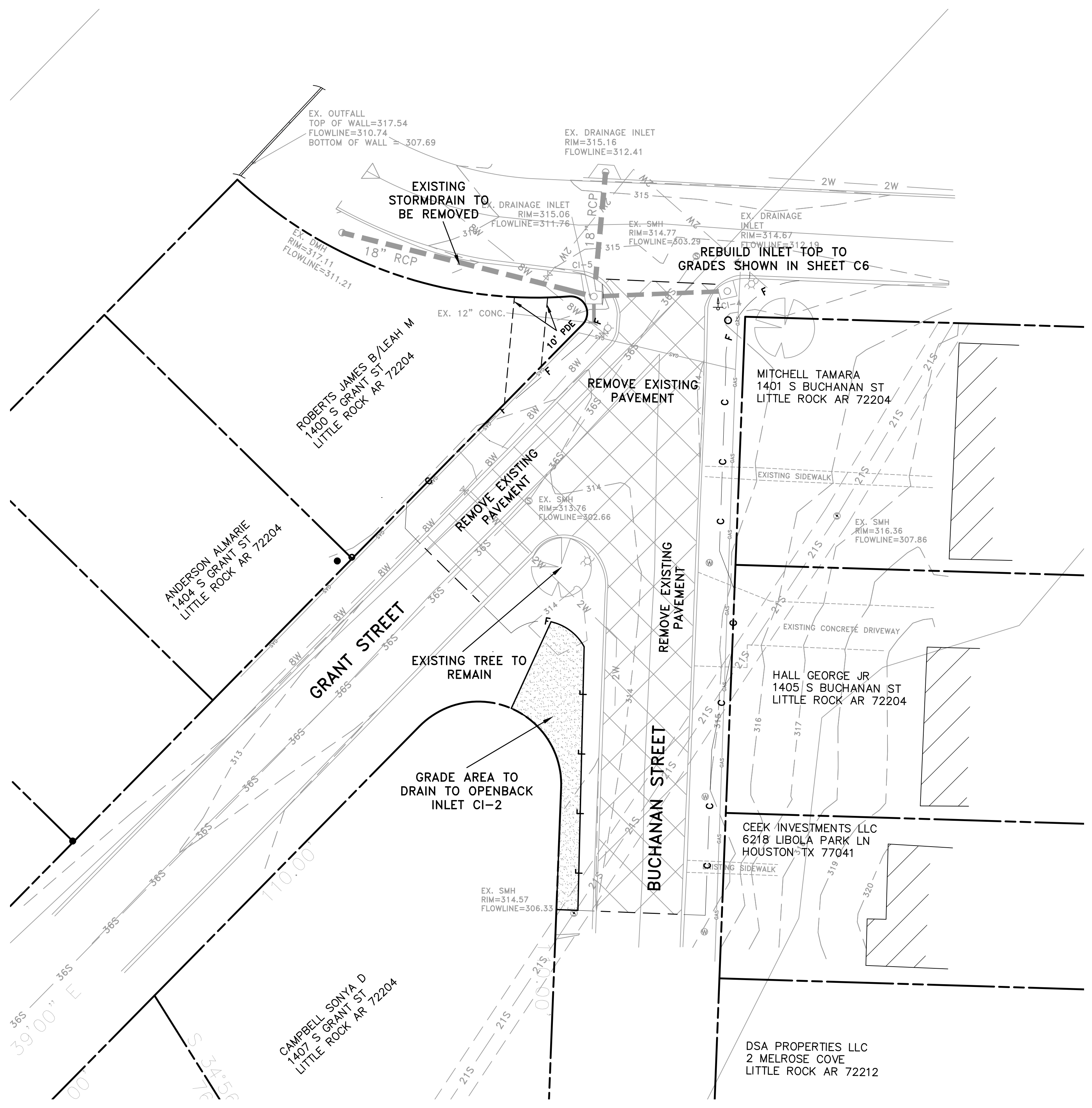
REVISIONS	DATE

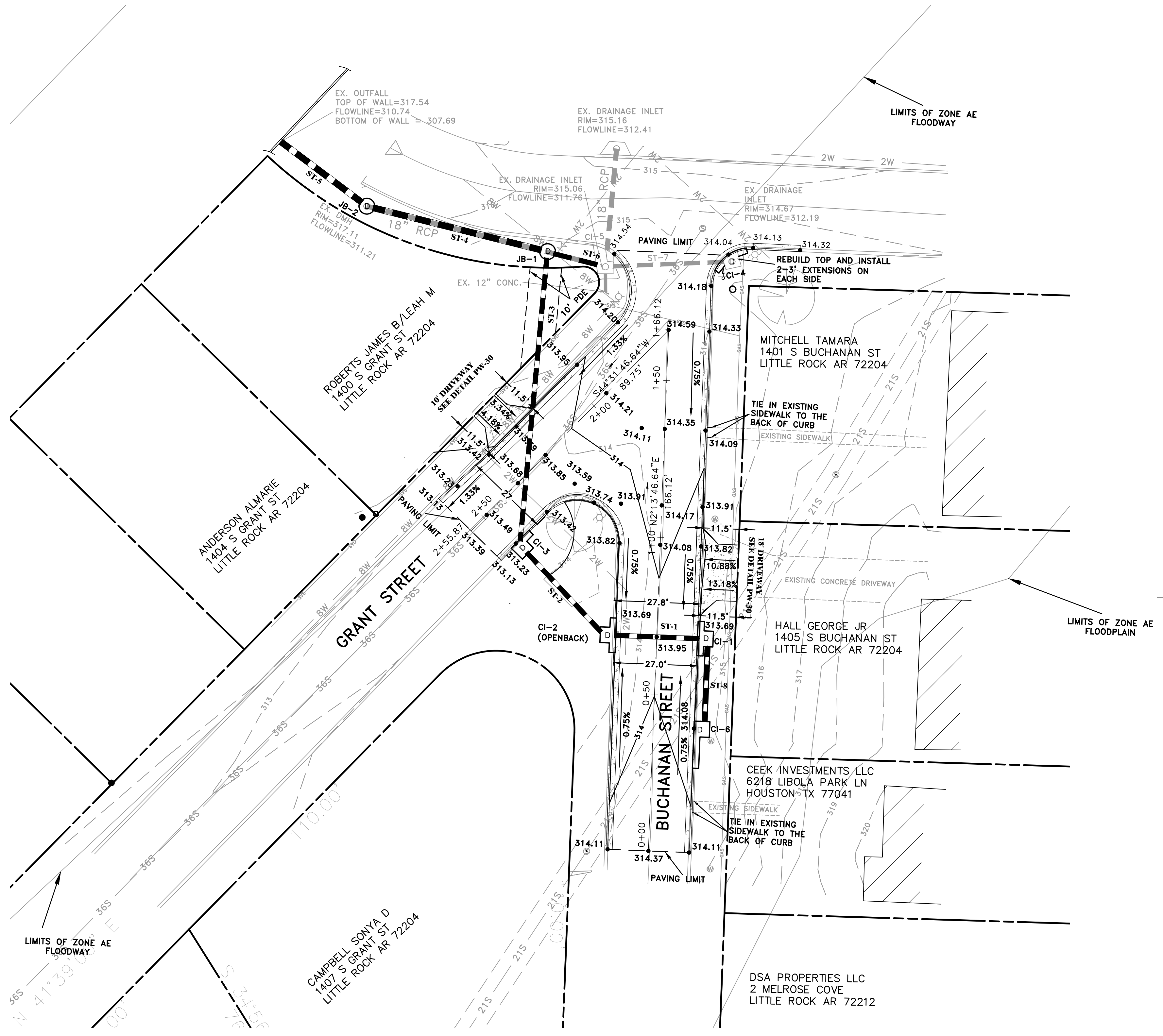
CITY OF LITTLE ROCK, ARKANSAS
GRANT & BUCHANAN STREET DRAINAGE
 SITE PREPARATION

DEPARTMENT OF PUBLIC WORKS
 CIVIL ENGINEERING
 701 W. MARKHAM
 LITTLE ROCK, ARKANSAS 72201




DRAWN BY
 IM
 DESIGNED
 IM
 CHECKED
 BK
 DATE
 04/26/2019
 SCALE
 1:20
 PROJECT NO.
 CLR # 2-17-DR-57
 SHEET NO.
C5





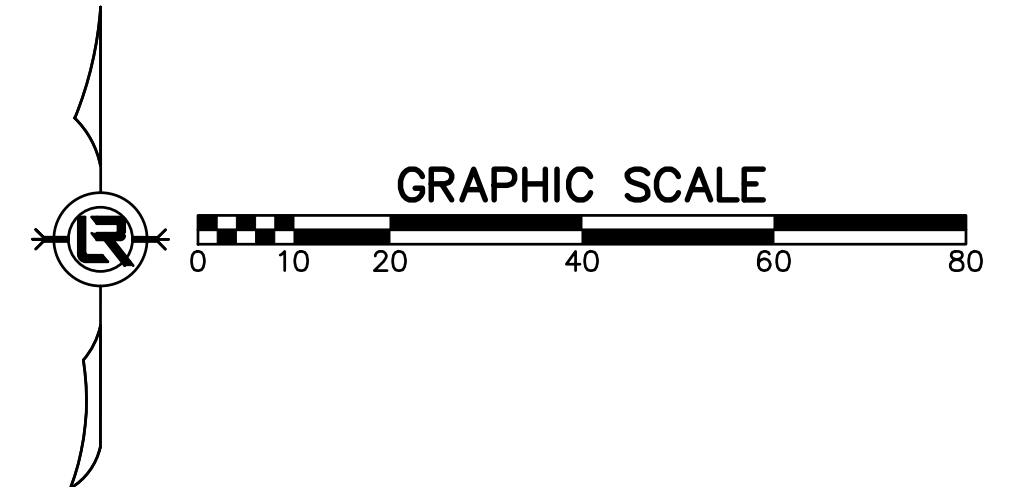
REVISIONS	DATE

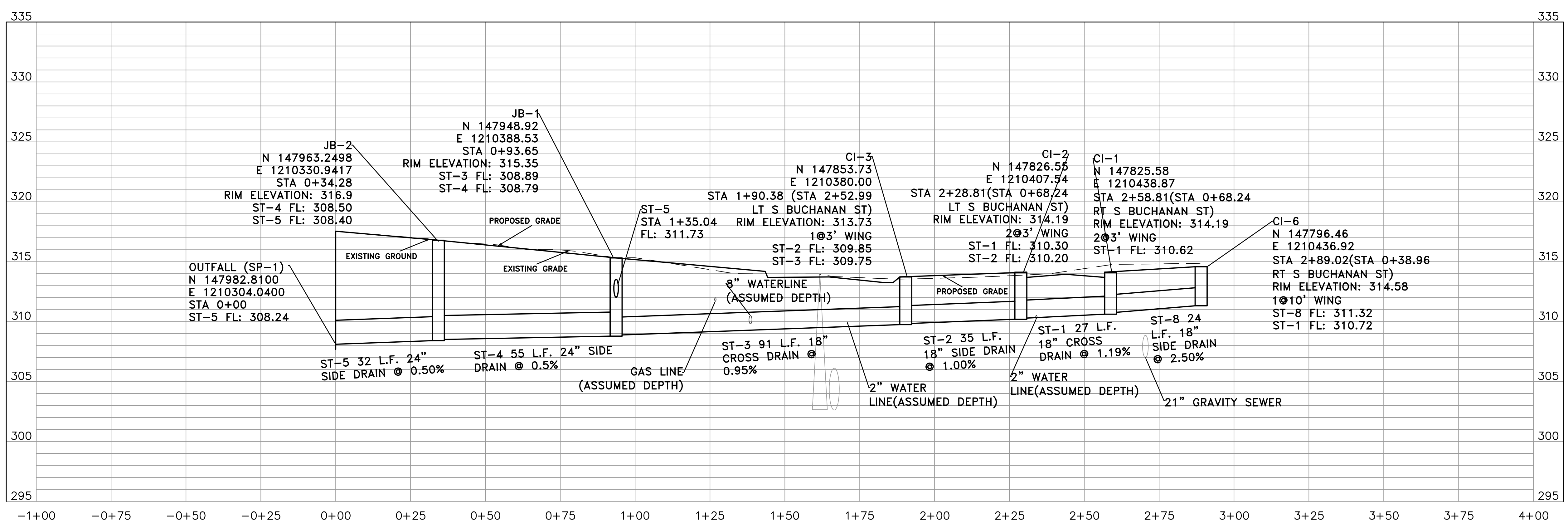
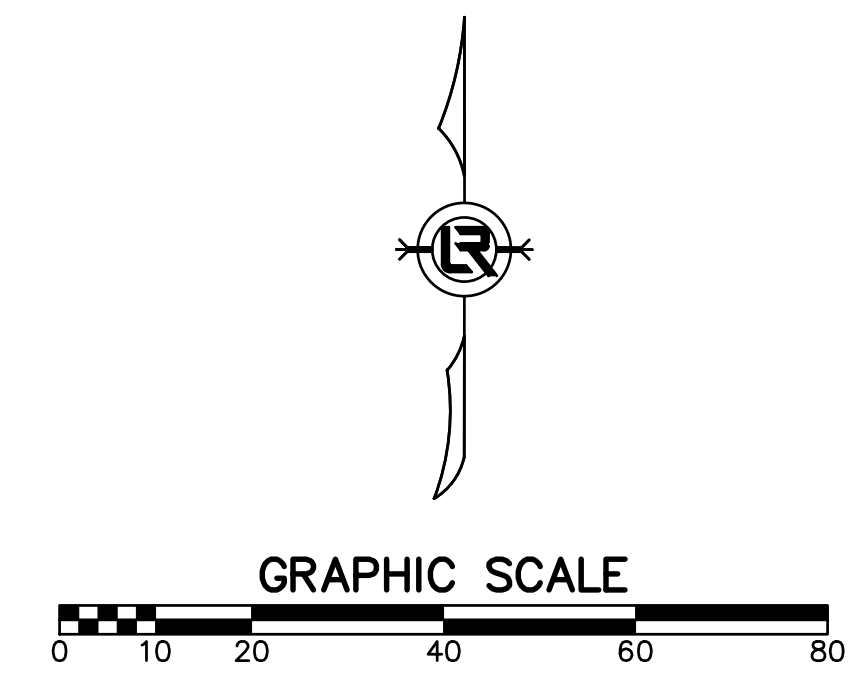
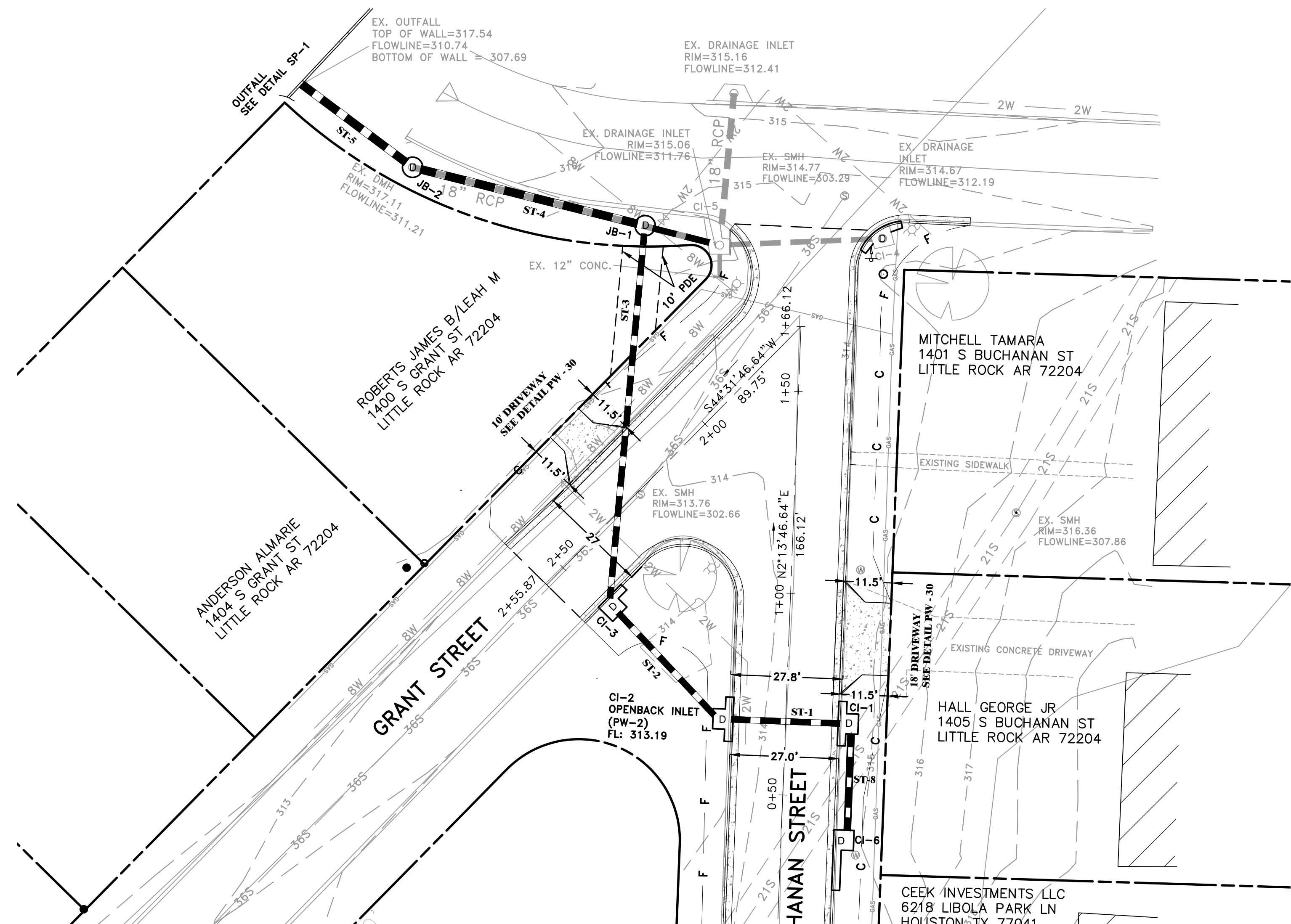
CITY OF LITTLE ROCK, ARKANSAS
GRANT & BUCHANAN STREET DRAINAGE
 GRADING AND DRAINAGE PLAN


 DEPARTMENT OF PUBLIC WORKS
 CIVIL ENGINEERING
 701 W. MARKHAM
 LITTLE ROCK, ARKANSAS 72201


 BENJAMIN L. KUDDES
 No. 14042


DRAWN BY IM
DESIGNED IM
CHECKED BK
DATE 04/26/2019
SCALE 1:20
PROJECT NO. CLR # 2-17-DR-57
SHEET NO. C6





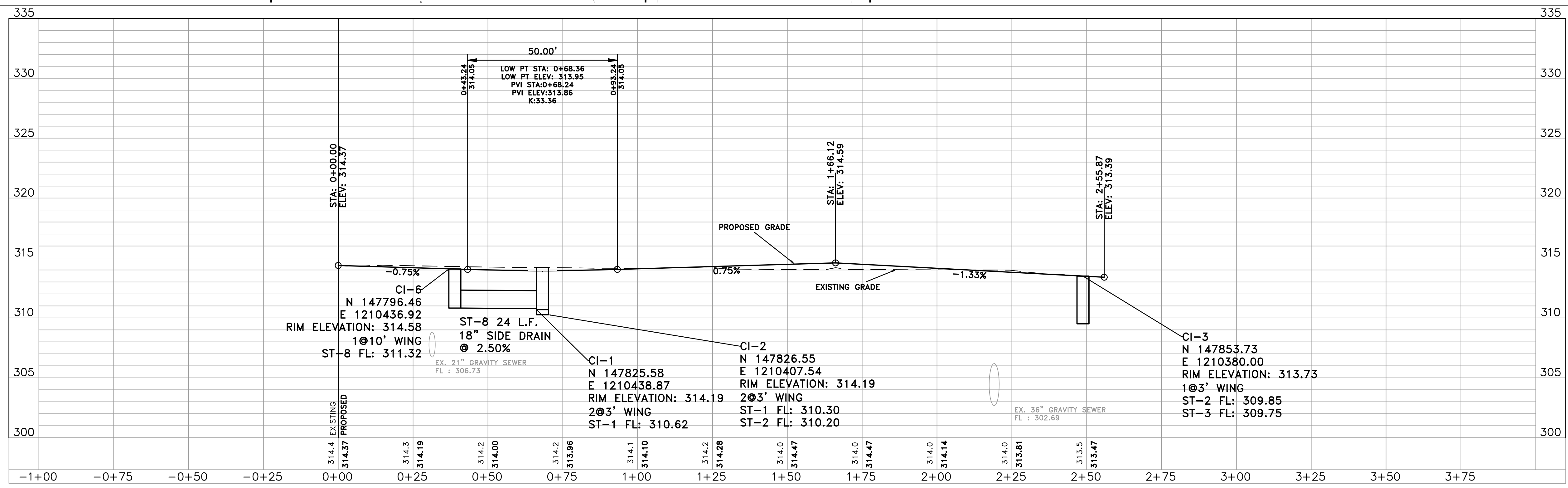
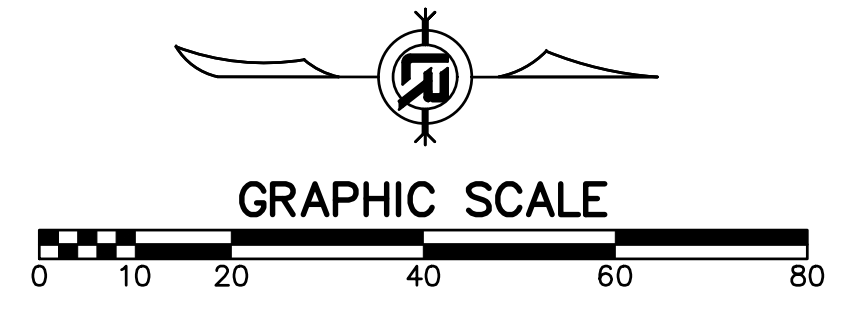
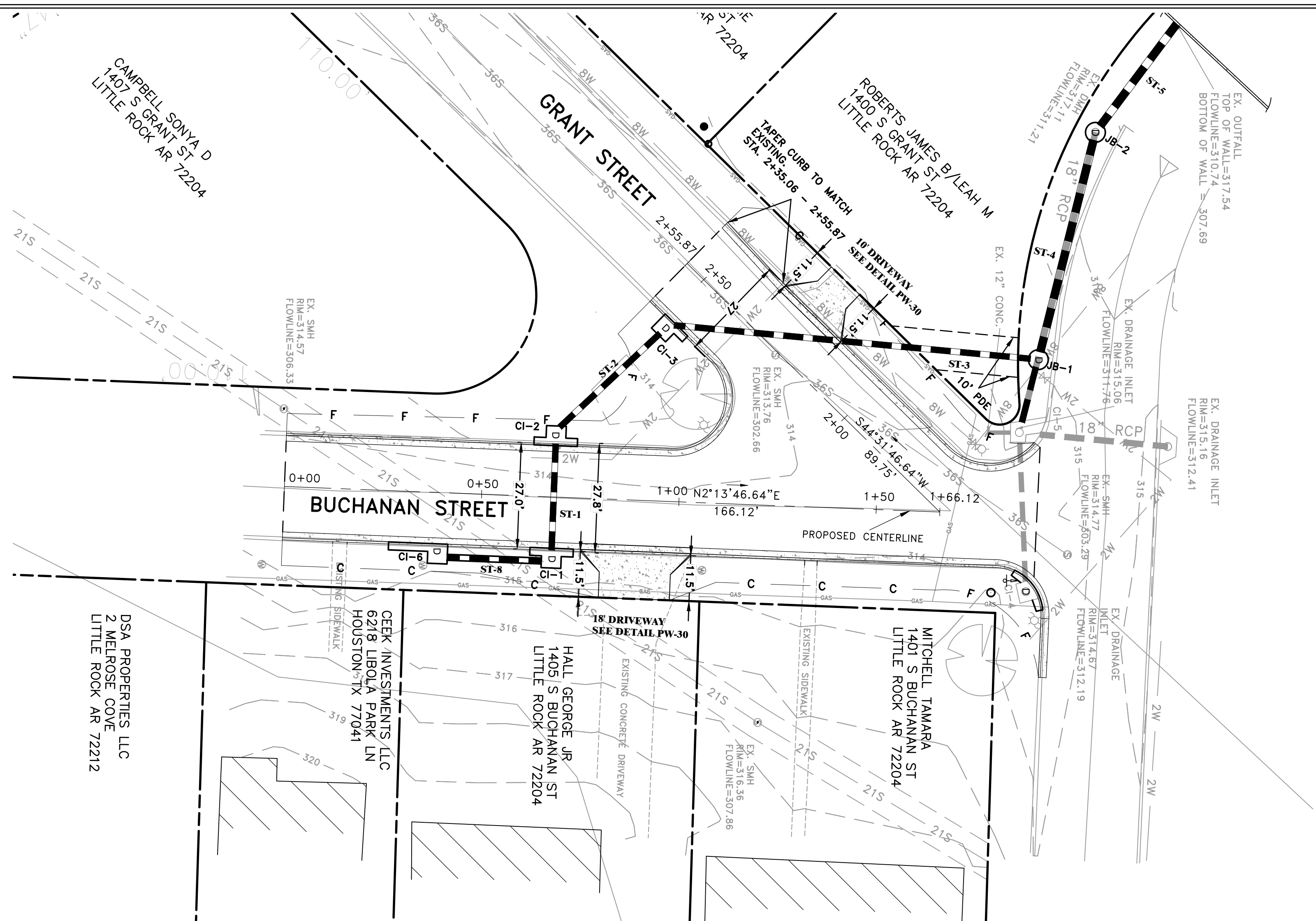
REVISIONS	DATE

CITY OF LITTLE ROCK, ARKANSAS
GRANT & BUCHANAN STREET DRAINAGE
 STORM DRAIN PLAN & PROFILE


 DEPARTMENT OF PUBLIC WORKS
 CIVIL ENGINEERING
 701 W. MARKHAM
 LITTLE ROCK, ARKANSAS 72201


 REGISTERED PROFESSIONAL ENGINEER
 No. 14042
 BENJAMIN L. KUDDUS

DRAWN BY IM
DESIGNED IM
CHECKED BK
DATE 04/26/2019
SCALE 1:20
PROJECT NO. CLR # 2-17-DR-57
SHEET NO. C7



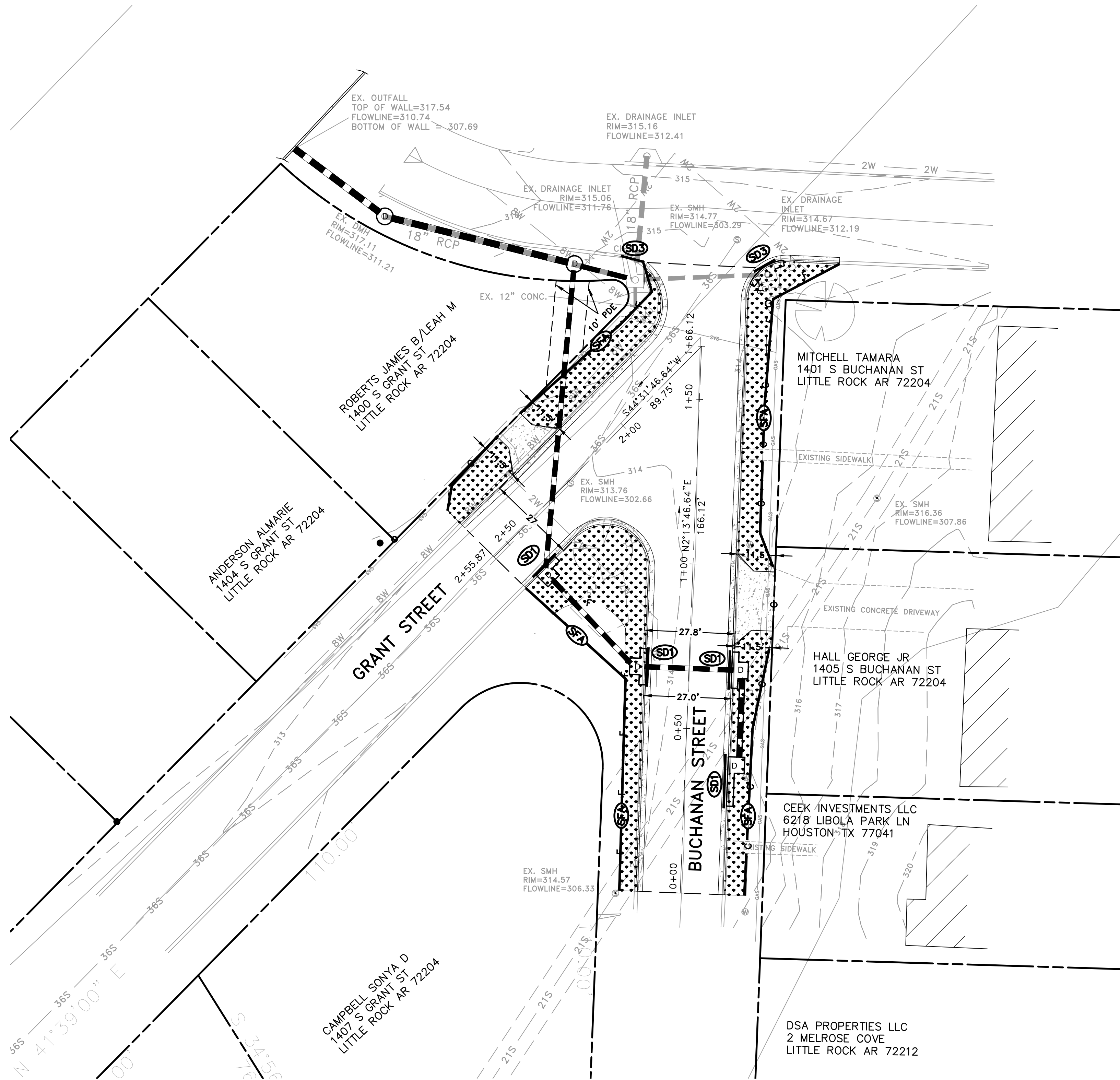
REVISIONS	DATE

CITY OF LITTLE ROCK, ARKANSAS
GRANT & BUCHANAN STREET DRAINAGE
ROADWAY PLAN & PROFILE

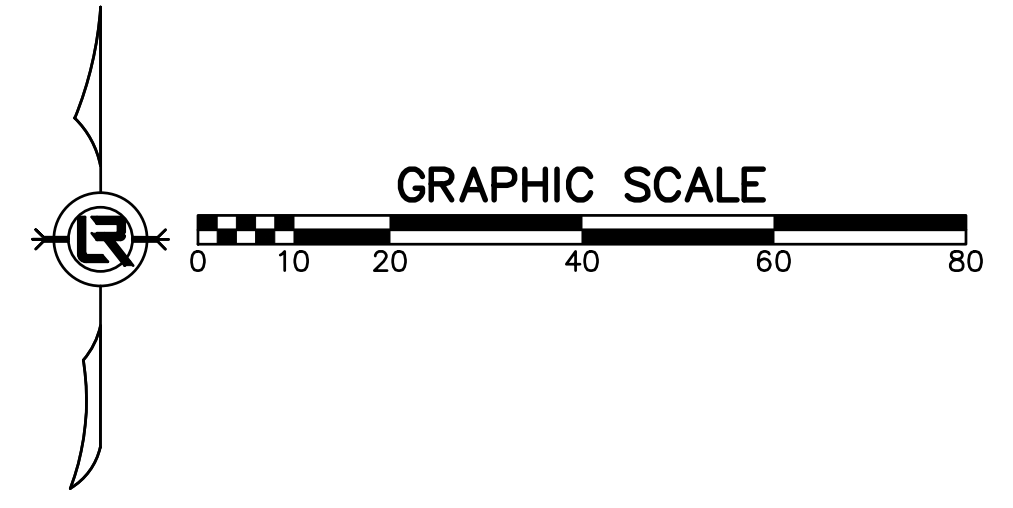
DEPARTMENT OF PUBLIC WORKS
CIVIL ENGINEERING
701 W. MARKHAM
LITTLE ROCK, ARKANSAS 72201



DRAWN BY IM
DESIGNED IM
CHECKED BK
DATE 04/26/2019
SCALE 1:20
PROJECT NO. CLR # 2-17-DR-57
SHEET NO. C8



CONSTRUCTION - ENTRANCE/EXIT	CO
CHECK DAM	CD
DIVERSION BERM	DI
DOWNDRAIN STRUCTURE - TEMPORARY	DN
ROCK DAM	RD
SEDIMENT BARRIER - SILT FENCE	SD1
SEDIMENT BARRIER - GRAVEL RING	SD2
SEDIMENT BARRIER - BLOCK & GRAVEL	SD3
SEDIMENT BARRIER - BLOCK	SD4
TEMPORARY SEDIMENT BASIN	SB1
SILT FENCE - TYPE A	SFA
SILT FENCE - TYPE B	SFB
SILT FENCE - TYPE C	SFC
STORM DRAIN OUTLET PROTECTION	ST
SURFACE ROUGHENING	SU
DISTURBED AREA STABILIZATION -TEMPORARY STABILIZATION	TS1
DISTURBED AREA STABILIZATION -TEMPORARY GRASSING	TS2
DISTURBED AREA STABILIZATION -PERMANENT GRASSING	TS3
MATTING/BLANKETS	Mb
SOD DISTURBED AREA	SD



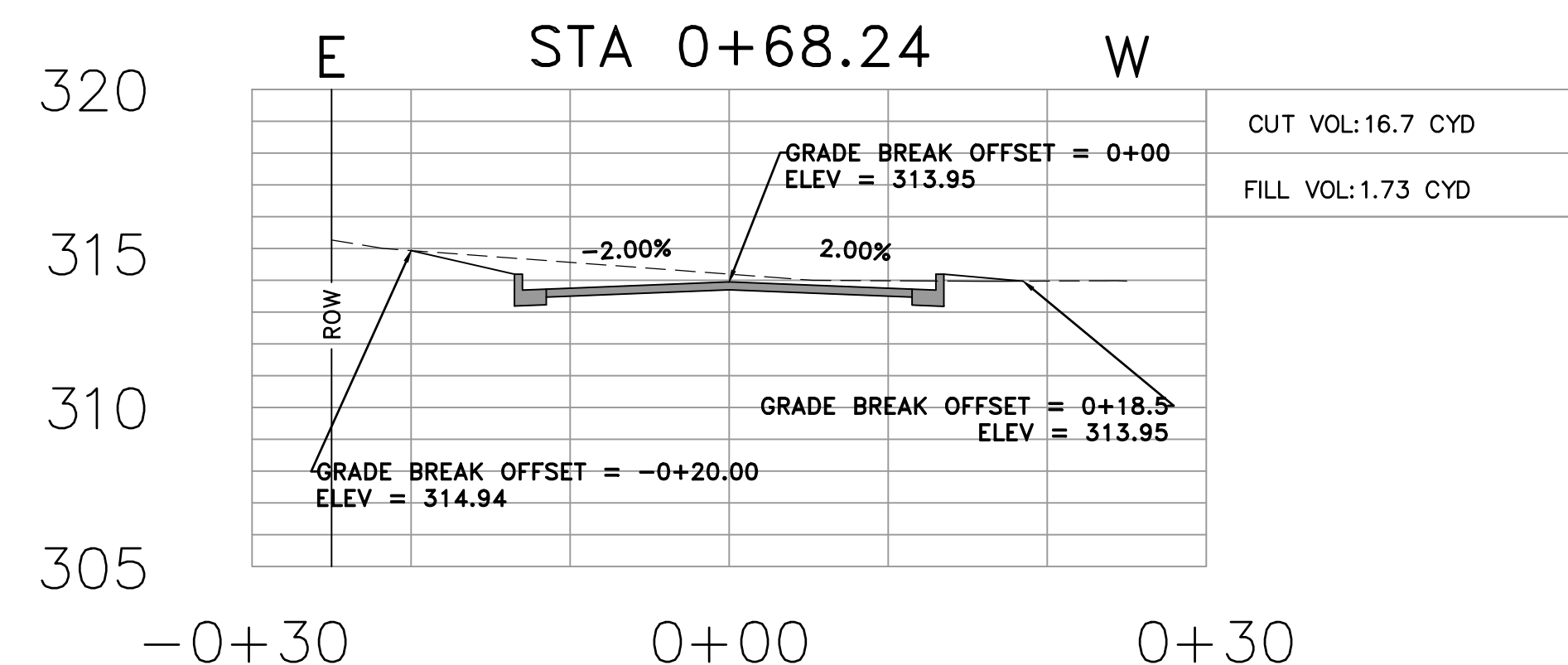
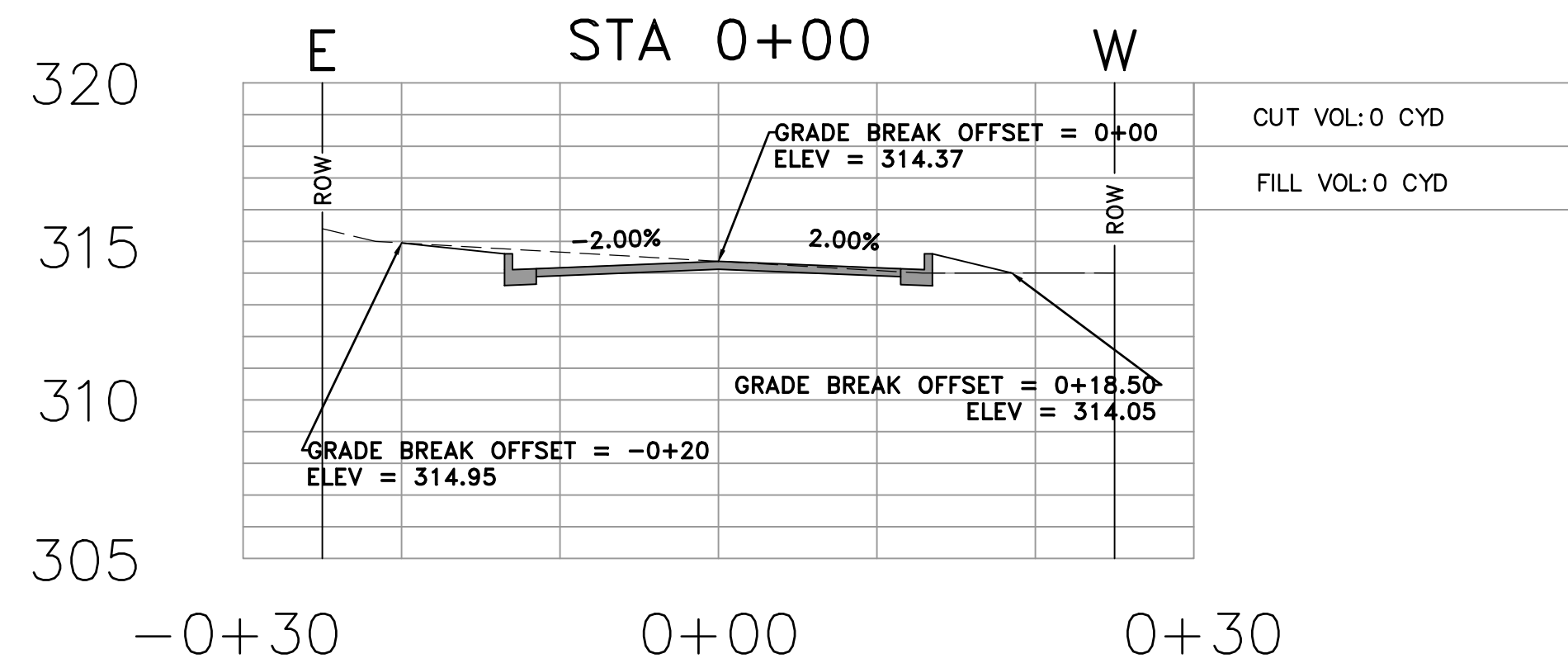
REVISIONS	DATE

CITY OF LITTLE ROCK, ARKANSAS
GRANT & BUCHANAN STREET DRAINAGE
 EROSION CONTROL PLAN

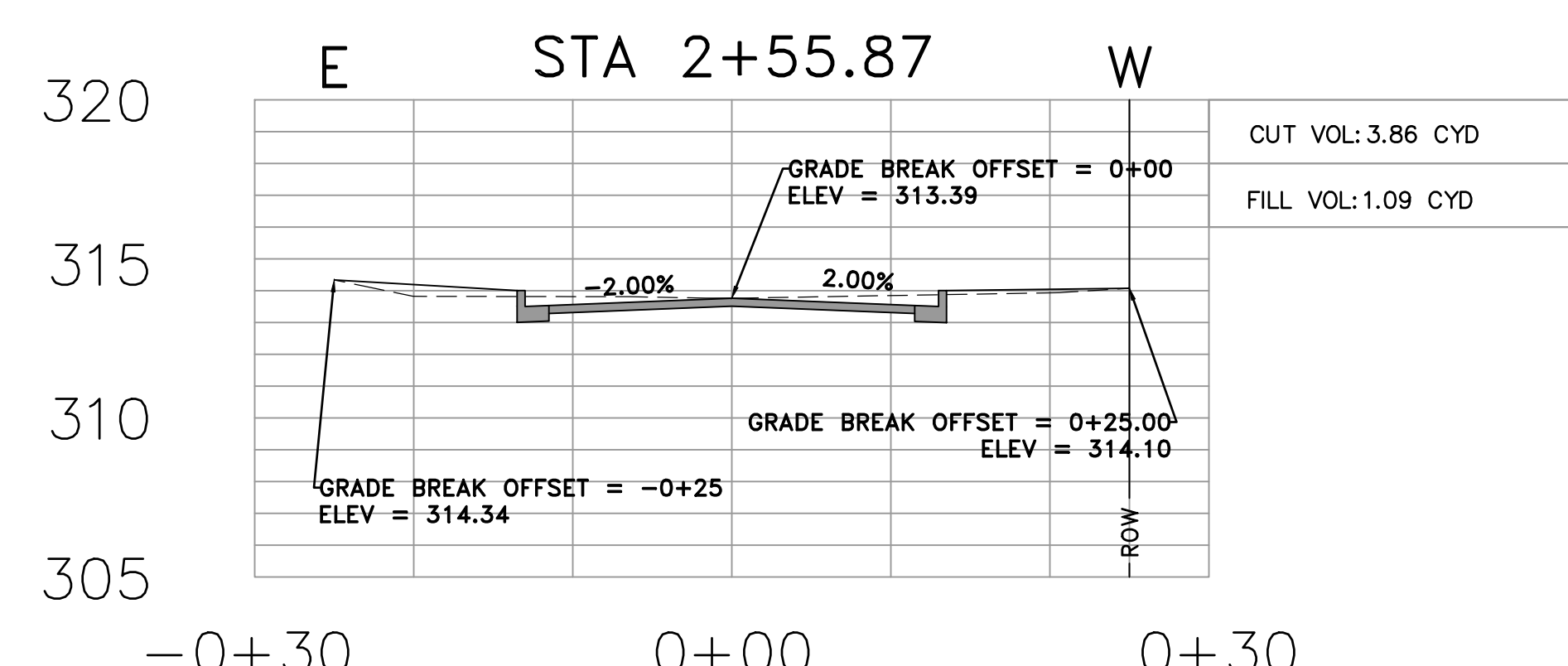
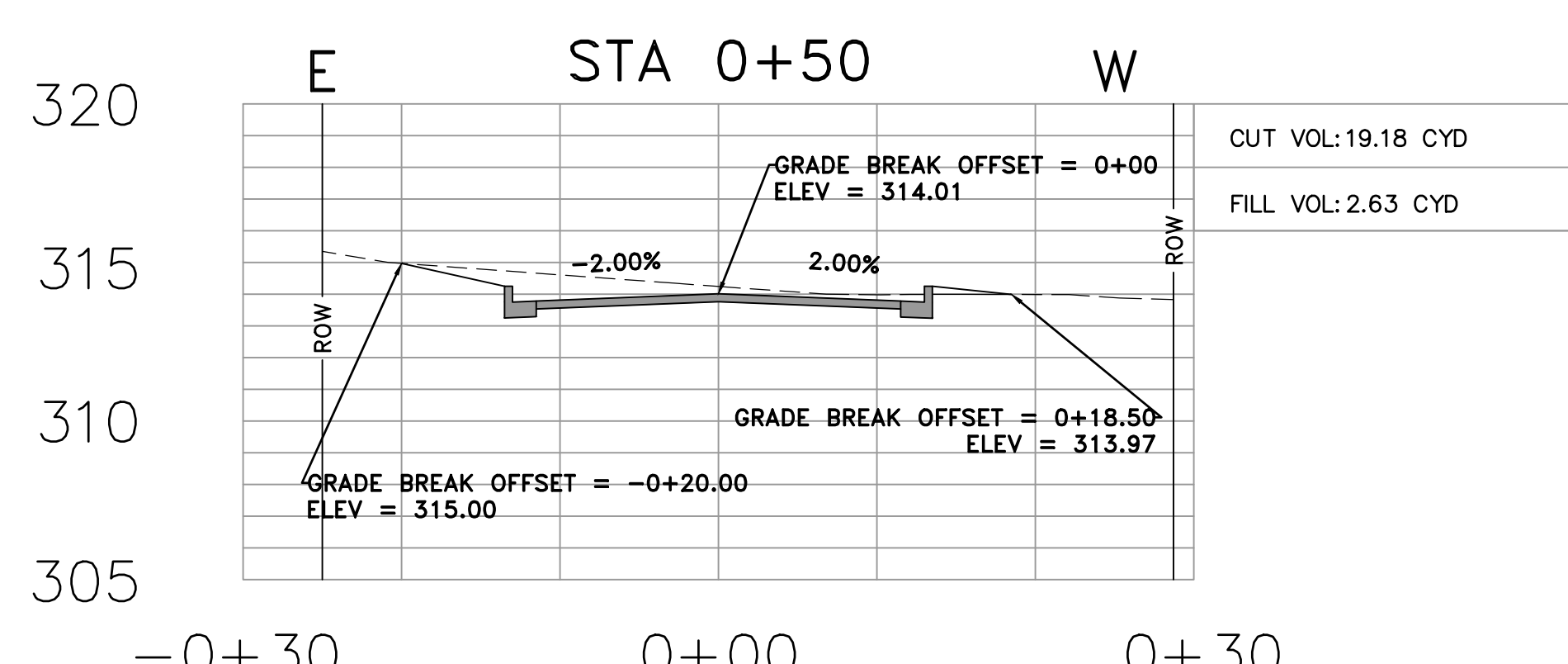
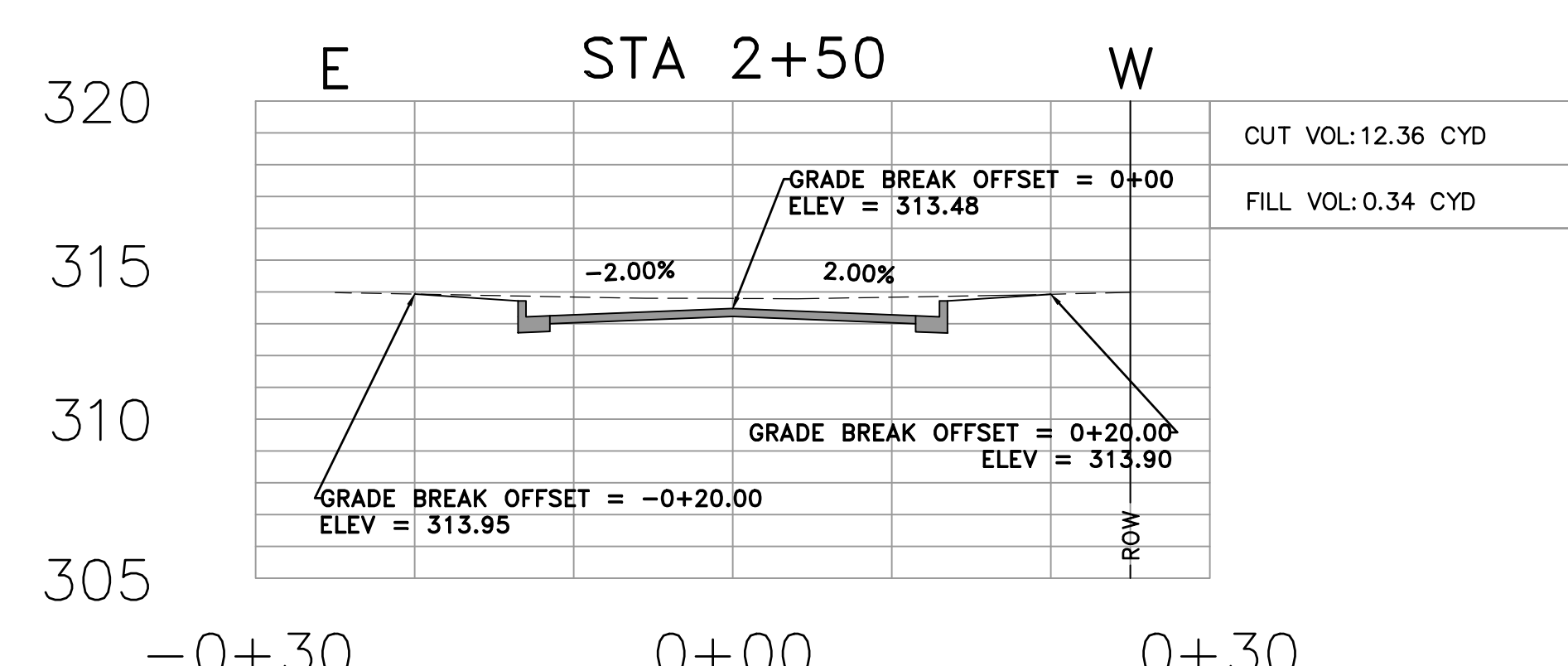
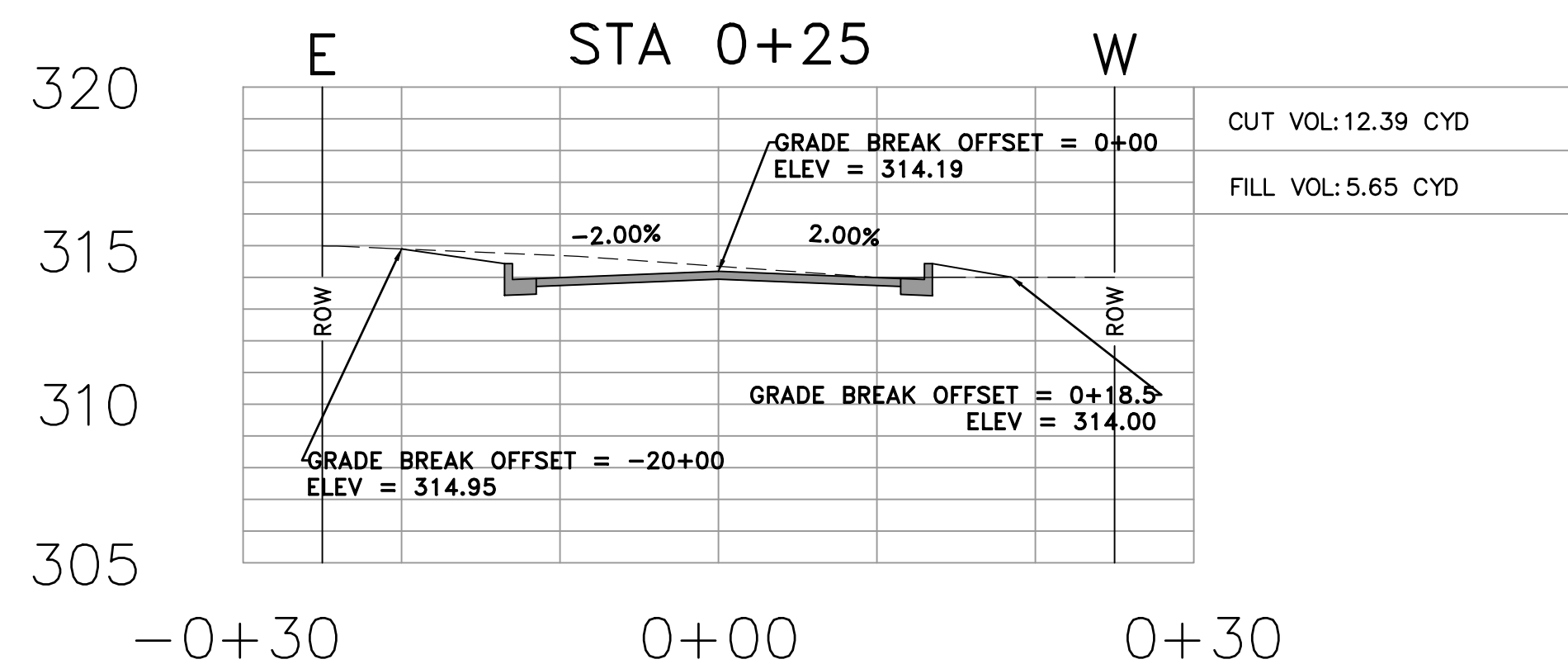
DEPARTMENT OF PUBLIC WORKS
 CIVIL ENGINEERING
 701 W. MARKHAM
 LITTLE ROCK, ARKANSAS 72201



DRAWN BY
 IM
 DESIGNED
 IM
 CHECKED
 BK
 DATE
 04/26/2019
 SCALE
 1:20
 PROJECT NO.
 CLR # 2-17-DR-57
 SHEET NO.
C9



SEE SHEET C10 FOR STA 0+97.62 TO 2+34.62



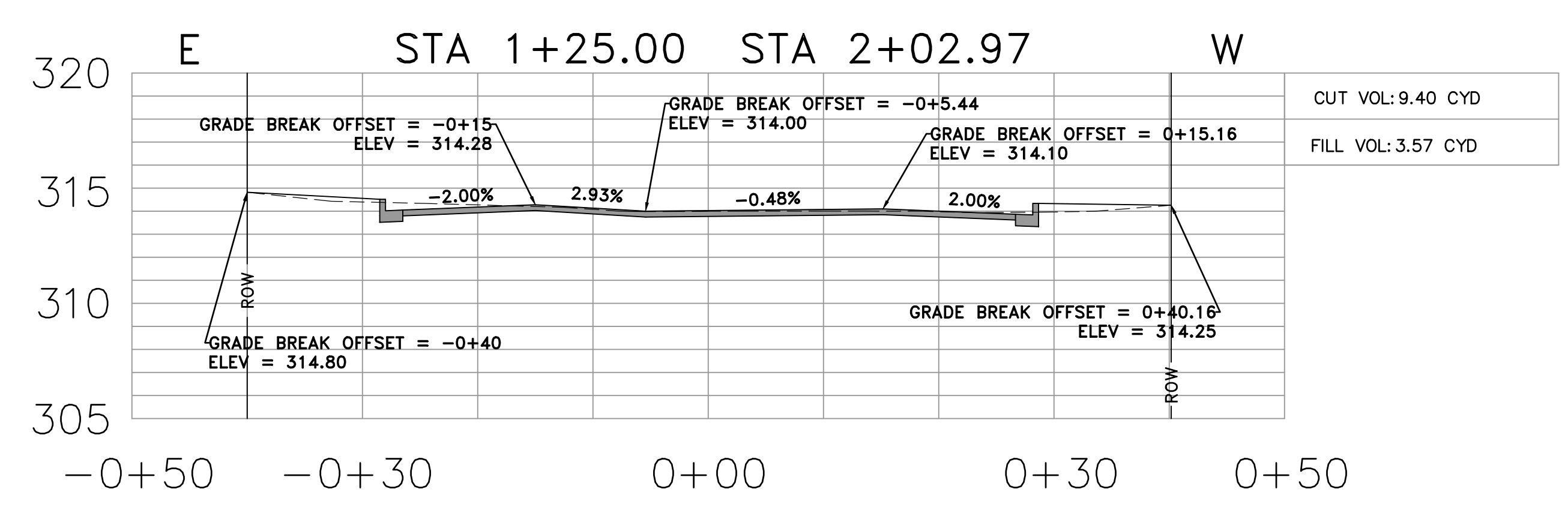
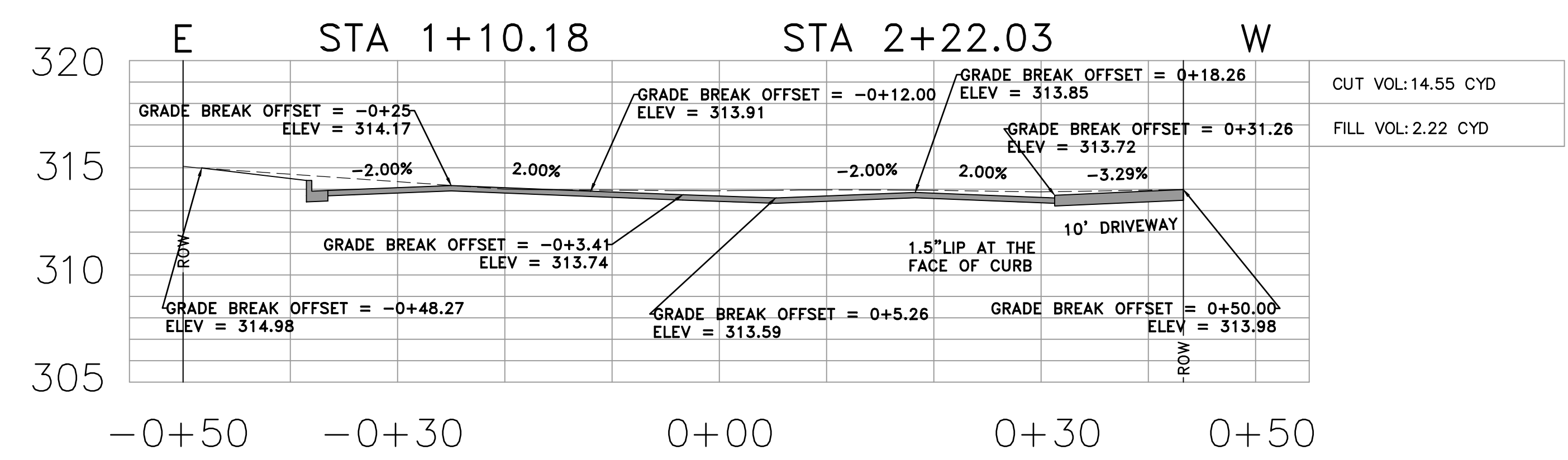
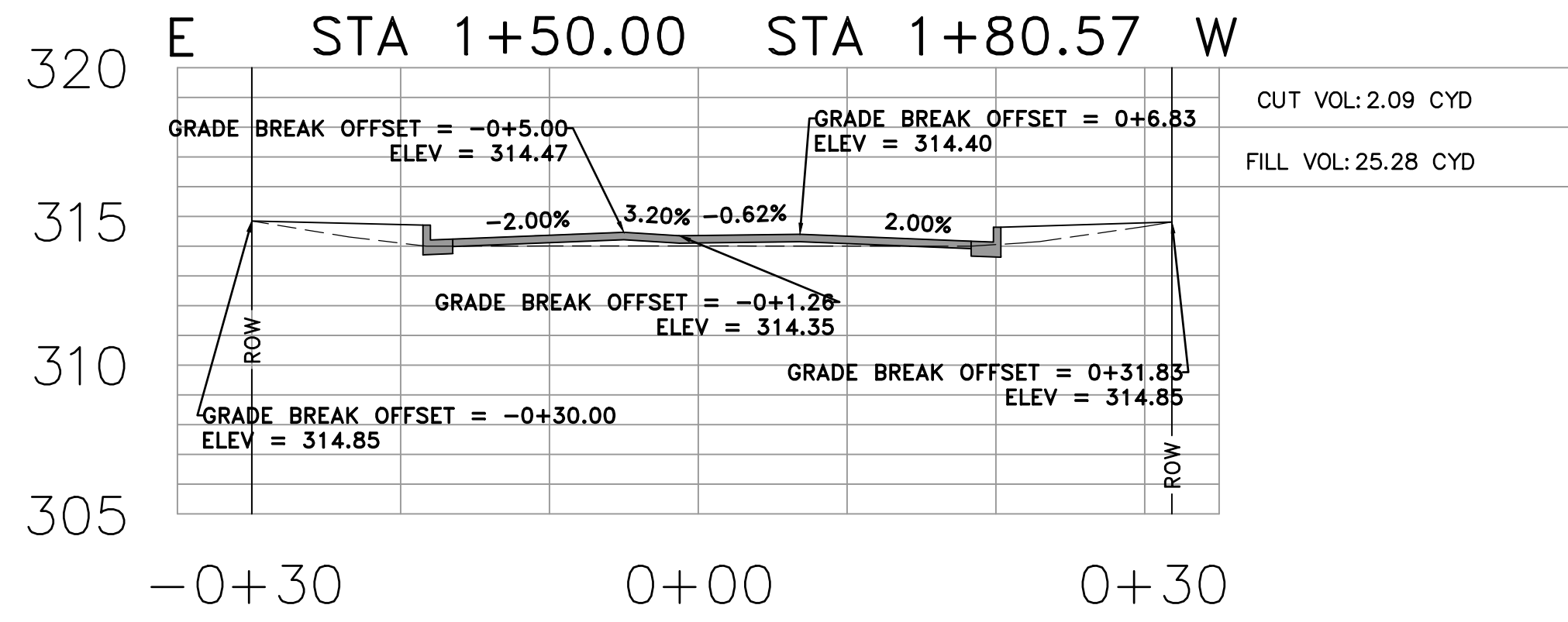
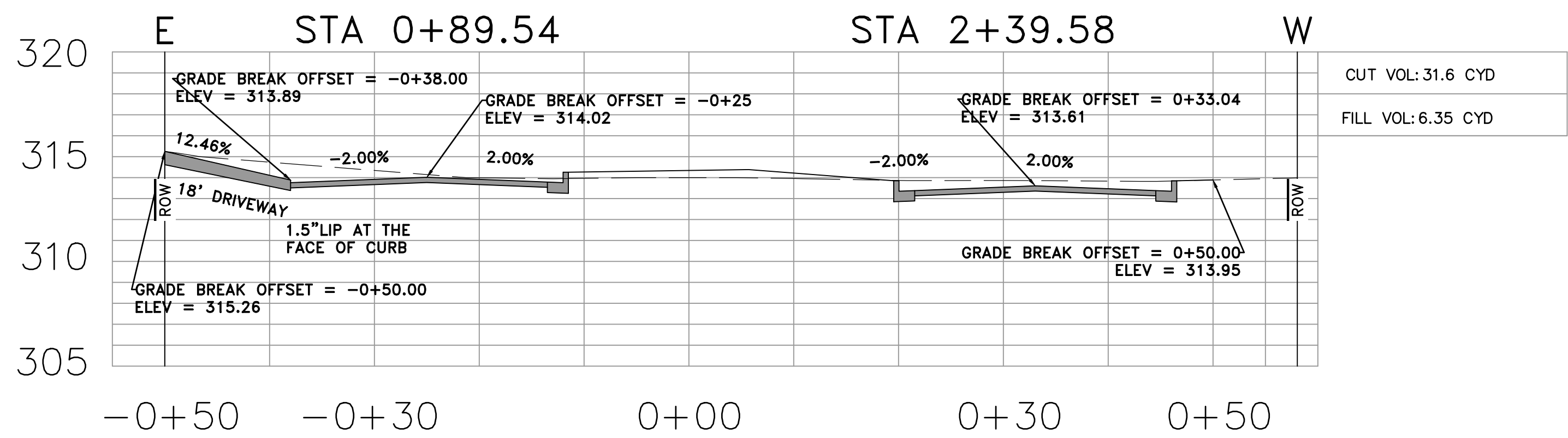
REVISIONS	DATE

CITY OF LITTLE ROCK, ARKANSAS
 GRANT & BUCHANAN STREET DRAINAGE
 CROSS SECTIONS - 1

DEPARTMENT OF PUBLIC WORKS
 CIVIL ENGINEERING
 701 W. MARKHAM
 LITTLE ROCK, ARKANSAS 72201

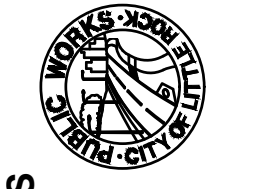


DRAWN BY IM
DESIGNED IM
CHECKED BK
DATE 04/26/2019
SCALE N.T.S
PROJECT NO. CLR # 2-17-DR-57
SHEET NO. C10




REVISIONS	DATE

CITY OF LITTLE ROCK, ARKANSAS
GRANT & BUCHANAN STREET DRAINAGE
CROSS SECTIONS - 2



DEPARTMENT OF PUBLIC WORKS
CIVIL ENGINEERING
701 W. MARKHAM
LITTLE ROCK, ARKANSAS 72201





DRAWN BY IM
DESIGNED IM
CHECKED BK
DATE 04/26/2019
SCALE N.T.S
PROJECT NO. CLR # 2-17-DR-57
SHEET NO. C11