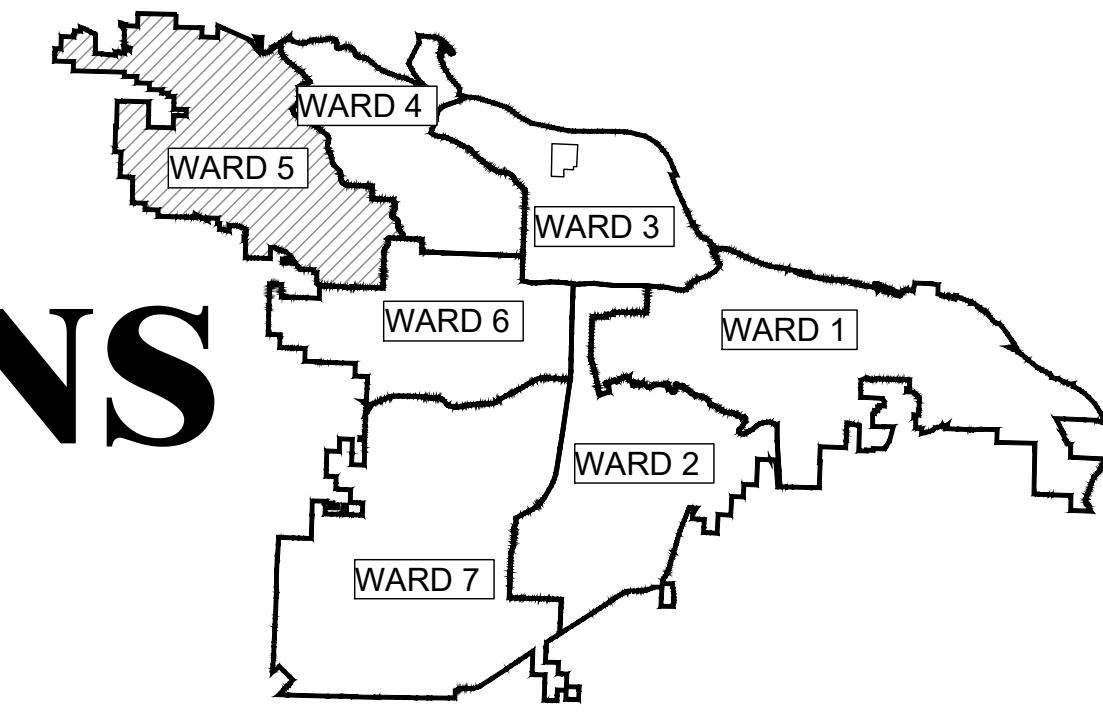


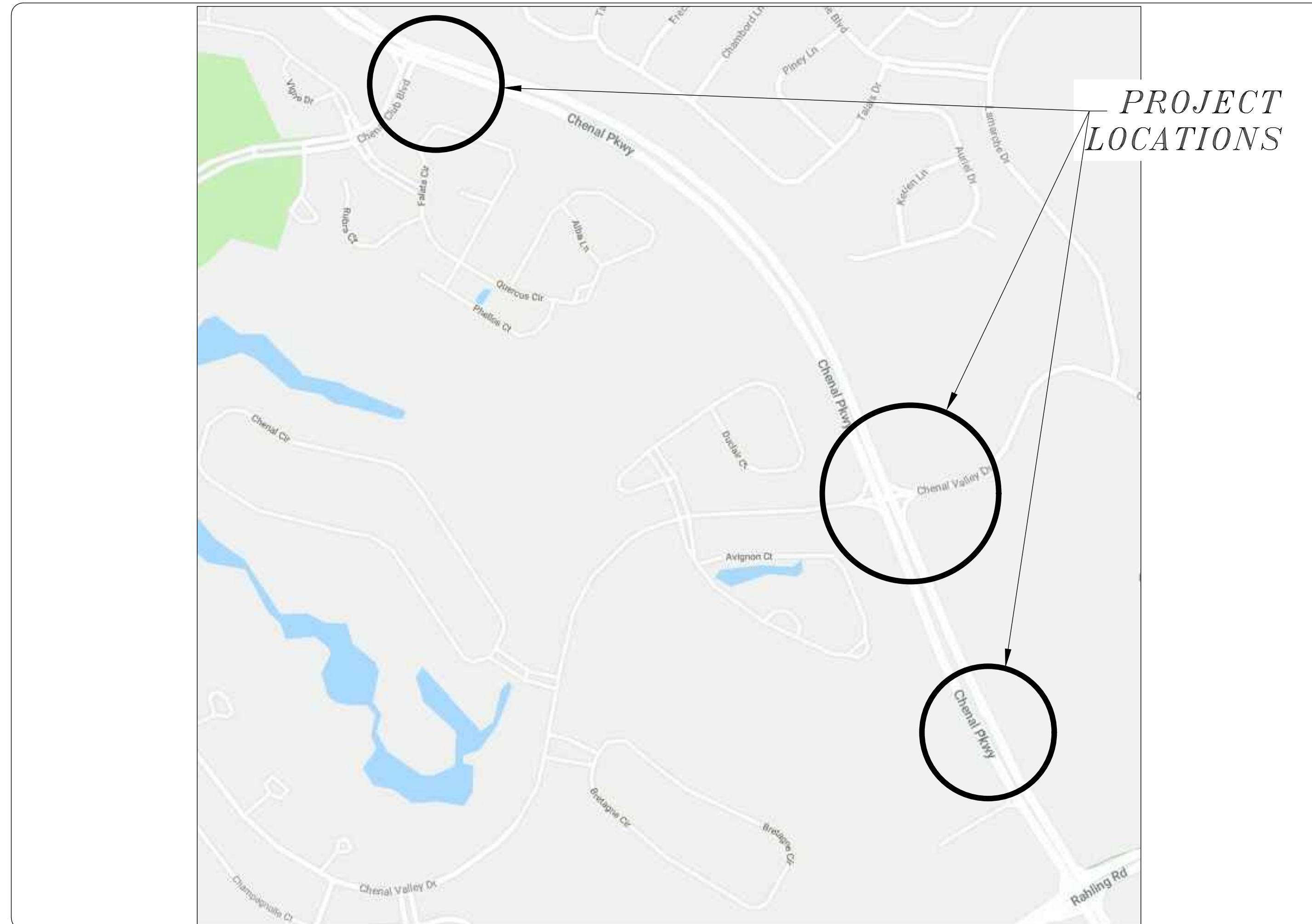
05-17-DR-352

CHENAL PARKWAY UNDERDRAINS

CHENAL PARKWAY 90% SUBMITTAL



PROJECT LOCATION - WARD 5



SHEET NO.	TITLE
C1	COVER SHEET
C2	GENERAL NOTES, LEGEND AND QUANTITIES
C3	PLAN - EAST OF CHENAL CLUB BLVD INTERSECTION
C4	PLAN - EAST OF CHENAL VALLEY DR INTERSECTION
C5	PLAN - NORTH OF RAHLING DR INTERSECTION
C6	SITE DETAILS



**2019-2021
BOND PROGRAM**

DEPARTMENT OF PUBLIC WORKS
CIVIL ENGINEERING
701 WEST MARKHAM STREET
LITTLE ROCK, ARKANSAS 72201



**Know what's below.
Call before you dig.**



10411 W. Markham St. Suite 320.
Little Rock, Arkansas 72205
MAIN (501) 801-2690

REVISIONS DATE

CITY OF LITTLE ROCK, ARKANSAS
CHENAL PARKWAY UNDERDRAINS

COVER SHEET

DEPARTMENT OF PUBLIC WORKS
CIVIL ENGINEERING
701 W. MARKHAM
LITTLE ROCK, ARKANSAS 72201



DRAWN BY
LCJ
DESIGNED
BLV
CHECKED
BLV
DATE
03-19-19
SCALE
N.T.S.

PROJECT NO.
05-17-DR-352

SHEET NO.

C1

Item Number	Description	Unit	QUAN.
2.01	SITE PREPARATION	LS	1
3.01	UNCLASSIFIED EXCAVATION	CY	116
4.01	AGGREGATE BASE COURSE	TON	58
5.01	TACK COAT	GAL	188.5
6.01	ACHM SURFACE COURSE	TON	691
13.65	TIE INTO EXISTING INLET STRUCTURE	EA	15
16.01	MAINTENANCE OF TRAFFIC	LS	1
19.01	FINAL CLEANUP	LS	1
23.02	C-BALLAST	TON	17.4
26.10	TRENCH & EXCAVATION SAFETY	LS	1
27.10	COLD MILLING ASPHALT PAVEMENT	SY	659
29.10	PROJECT INFORMATION KIOSK (PW-18)	LS	1
611.04	4" PERFORATED PIPE UNDERDRAINS (PVC Sch. 40) (FRENCH DRAIN PIPE)	LF	3133
625.01	GEOTEXTILE FABRIC (TYPE 1) (Mirafi 140N)	SY	1624
719.04W	THERMOPLASTIC PAVEMENT MARKING WHITE (4")	LF	1484

EXISTING	PROPOSED
IRON ROD	PROPOSED CONTOUR
PK NAIL	PROPOSED SPOT ELEVATION
R.R. SPIKE	PROPOSED SPOT CURB ELEVATION
CONC. MONUMENT	STORM SEWER - PIPE
WATER VALVE	STORM SEWER - MITERED END SECTION
WATER METER	STORM SEWER - GRATE INLET
FIRE HYDRANT	STORM SEWER - JUNCTION BOX
GAS METER	STORM SEWER - FLARED END SECTION
GAS VALVE	STORM SEWER - HEADWALL
CLEAN-OUT	STORM SEWER - SINGLE WING
GUARD POST (BOLLARD)	STORM SEWER - DOUBLE WING
SIGN POST	STORM SEWER - AREA INLET
BENCHMARK	GRADE BREAK LINE
STORM SEWER MANHOLE	HIGH POINT
SANITARY SEWER MANHOLE	LOW POINT
TELEPHONE MANHOLE	OUT LINE
ELECTRIC MANHOLE	FILL LINE
TELEPHONE BOX	SANITARY SEWER PIPE
ELECTRIC BOX	SANITARY SEWER MANHOLE
CABLE BOX	PROPOSED CURB
UTILITY POLE	PROPOSED CONCRETE
GUY WIRE	CONSTRUCTION - ENTRANCE/EXIT
LIGHT POLE	CHECK DAM
POST OR POLE (TYPE AS NOTED)	DIVERSION BERM
MAILBOX	DOWNDRAIN STRUCTURE - TEMPORARY
DECIDUOUS TREE	ROCK DAM
EVERGREEN/CONIFEROUS TREE	SEDIMENT BARRIER - SILT FENCE
BUSH	SEDIMENT BARRIER - GRAVEL RING
PROPERTY LINE	SEDIMENT BARRIER - BLOCK & GRAVEL
SETBACK LINE	SEDIMENT BARRIER - BLOCK
EASEMENT LINE	TEMPORARY SEDIMENT BASIN
CURB	SILT FENCE - TYPE A
FENCE	SILT FENCE - TYPE B
OVERHEAD ELECTRIC	SILT FENCE - TYPE C
OVERHEAD TELEPHONE	STORM DRAIN OUTLET PROTECTION
OVERHEAD CABLE	SURFACE ROUGHENING
UNDERGROUND TELEPHONE	DISTURBED AREA STABILIZATION - TEMPORARY STABILIZATION
UNDERGROUND ELECTRIC	DISTURBED AREA STABILIZATION - TEMPORARY GRASSING
UNDERGROUND CABLE	DISTURBED AREA STABILIZATION - PERMANENT GRASSING
WATER LINE	MATTING/BLANKETS
SEWER LINE	
GAS LINE	
STORM SEWER/CULVERT	
EDGE OF WOODS	
CONTOUR LINE	

REVISIONS	DATE

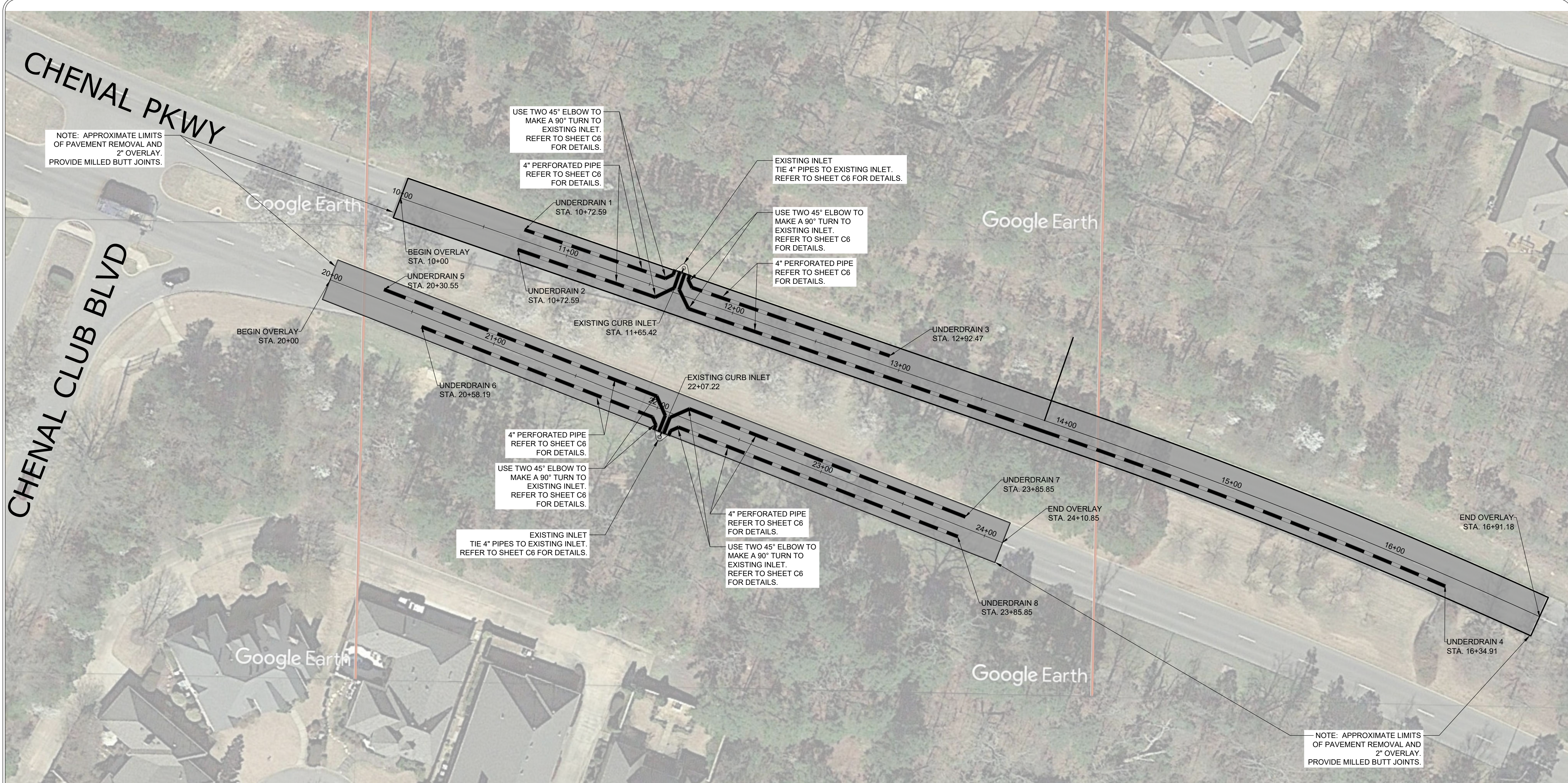
CITY OF LITTLE ROCK, ARKANSAS
CHEVAL PARKWAY UNDERDRAINS

GENERAL NOTES, LEGEND AND QUANTITIES

DEPARTMENT OF PUBLIC WORKS
CIVIL ENGINEERING
701 W. MARKHAM
LITTLE ROCK, ARKANSAS 72201

**90% SUBMITTAL
REVIEW ONLY**

DRAWN BY LCJ
DESIGNED BLV
CHECKED BLV
DATE 03-19-19
SCALE N.T.S.
PROJECT NO. 05-17-DR-352
SHEET NO. C2



NOTE: APPROXIMATE LIMITS OF PAVEMENT REMOVAL AND 2" OVERLAY. PROVIDE MILLED BUTT JOINTS.

NOTE: APPROXIMATE LIMITS OF PAVEMENT REMOVAL AND 2" OVERLAY. PROVIDE MILLED BUTT JOINTS.

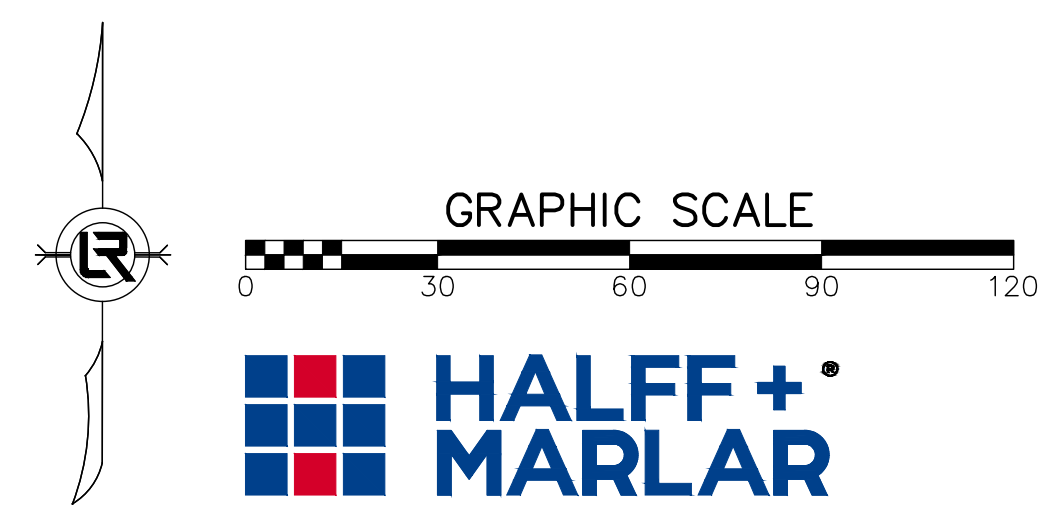
REVISIONS	DATE

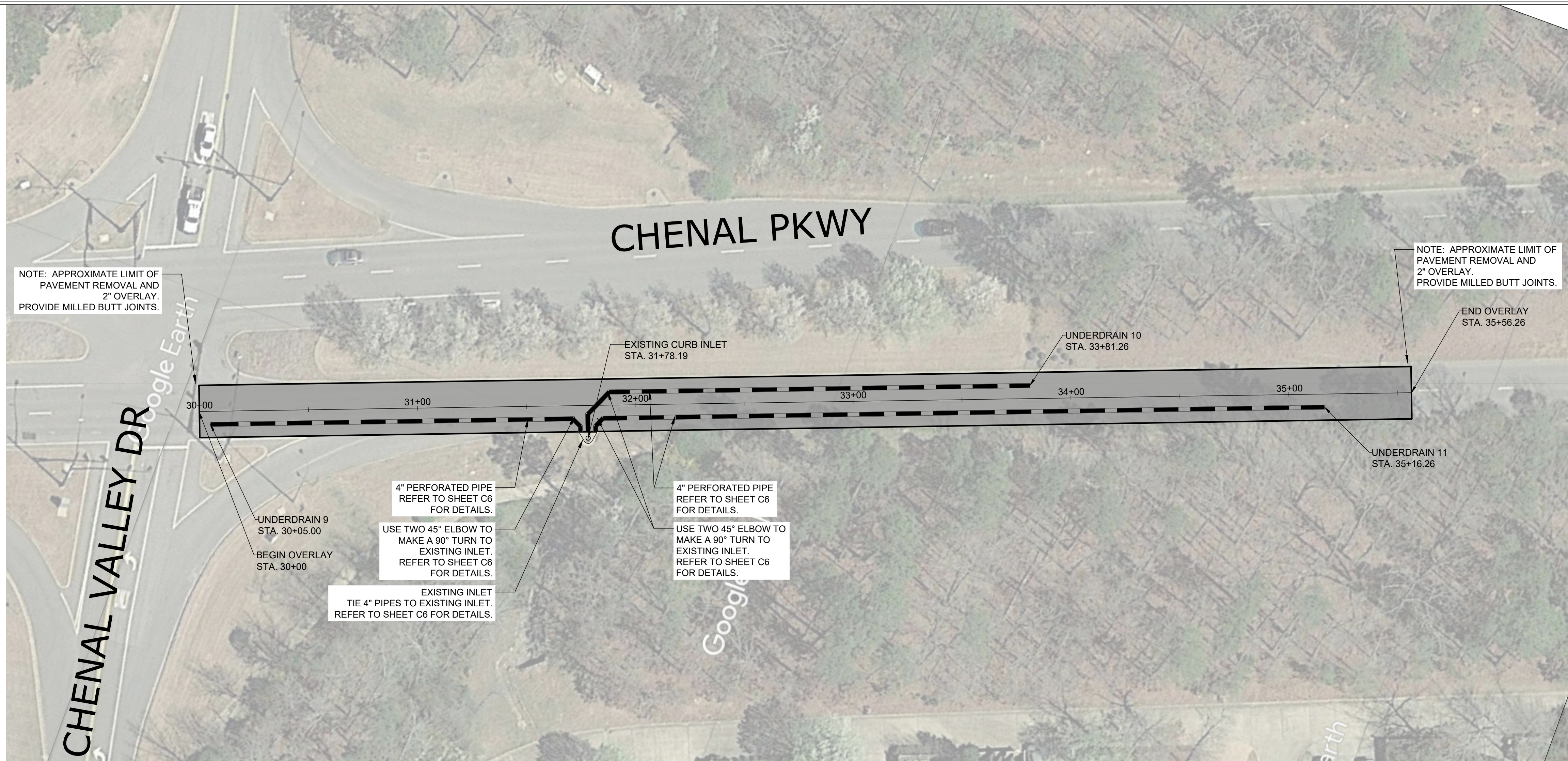
CITY OF LITTLE ROCK, ARKANSAS
 CHENAL PARKWAY UNDERDRAINS
 WEST BOUND AND EAST BOUND LANES OF CHENAL PKWY
 EAST OF CHENAL CLUB BLVD INTERSECTION

DEPARTMENT OF PUBLIC WORKS
 CIVIL ENGINEERING
 701 W. MARKHAM
 LITTLE ROCK, ARKANSAS 72201

90% SUBMITTAL
 REVIEW ONLY

DRAWN BY
 LCJ
 DESIGNED
 BLV
 CHECKED
 BLV
 DATE
 03-19-19
 SCALE
 1" = 30'-0"
 PROJECT NO.
 05-17-DR-352
 SHEET NO.
C3





NOTE: APPROXIMATE LIMIT OF PAVEMENT REMOVAL AND 2" OVERLAY. PROVIDE MILLED BUTT JOINTS.

NOTE: APPROXIMATE LIMIT OF PAVEMENT REMOVAL AND 2" OVERLAY. PROVIDE MILLED BUTT JOINTS.

UNDERDRAIN 9
STA. 30+05.00
BEGIN OVERLAY
STA. 30+00

4" PERFORATED PIPE
REFER TO SHEET C6
FOR DETAILS.

USE TWO 45° ELBOW TO
MAKE A 90° TURN TO
EXISTING INLET.
REFER TO SHEET C6
FOR DETAILS.

EXISTING INLET
TIE 4" PIPES TO EXISTING INLET.
REFER TO SHEET C6 FOR DETAILS.

4" PERFORATED PIPE
REFER TO SHEET C6
FOR DETAILS.

USE TWO 45° ELBOW TO
MAKE A 90° TURN TO
EXISTING INLET.
REFER TO SHEET C6
FOR DETAILS.

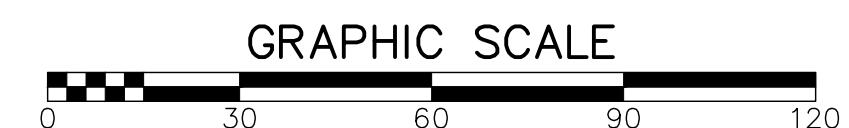
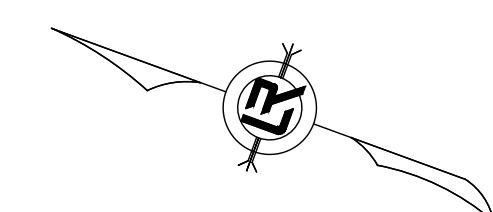
UNDERDRAIN 10
STA. 33+81.26

UNDERDRAIN 11
STA. 35+16.26

END OVERLAY
STA. 35+56.26

CHENAL VALLEY DR

CHENAL PKWY



REVISIONS	DATE

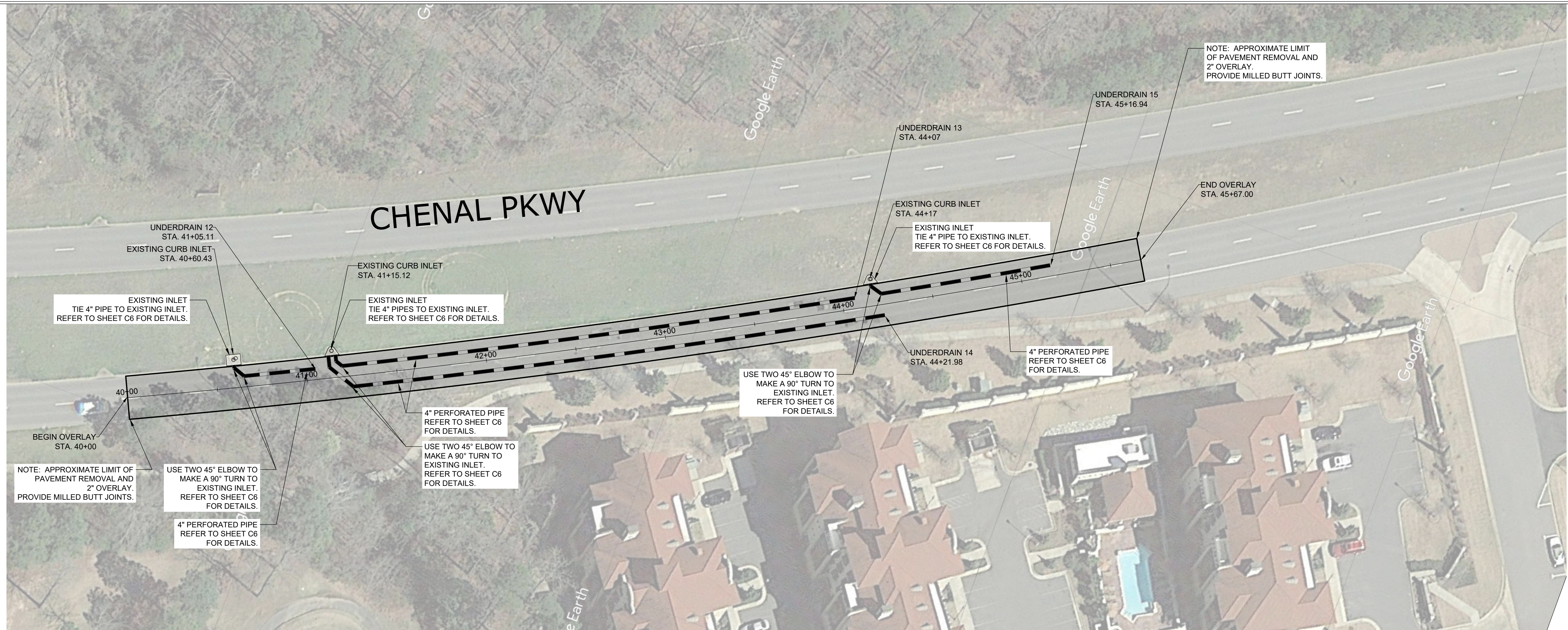
CITY OF LITTLE ROCK, ARKANSAS
CHENAL PARKWAY UNDERDRAINS
EAST BOUND LANES OF CHENAL PKWY
EAST OF CHENAL VALLEY DR INTERSECTION

DEPARTMENT OF PUBLIC WORKS
CIVIL ENGINEERING
701 W. MARKHAM
LITTLE ROCK, ARKANSAS 72201



90% SUBMITTAL
REVIEW ONLY

DRAWN BY
LCJ
DESIGNED
BLV
CHECKED
BLV
DATE
03-19-19
SCALE
1" = 30'-0"
PROJECT NO.
05-17-DR-352
SHEET NO.
C4



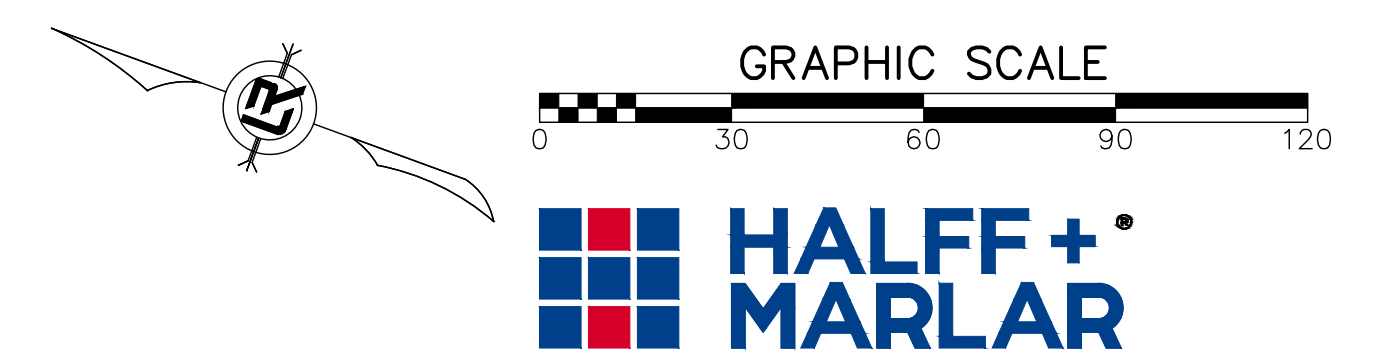
REVISIONS	DATE

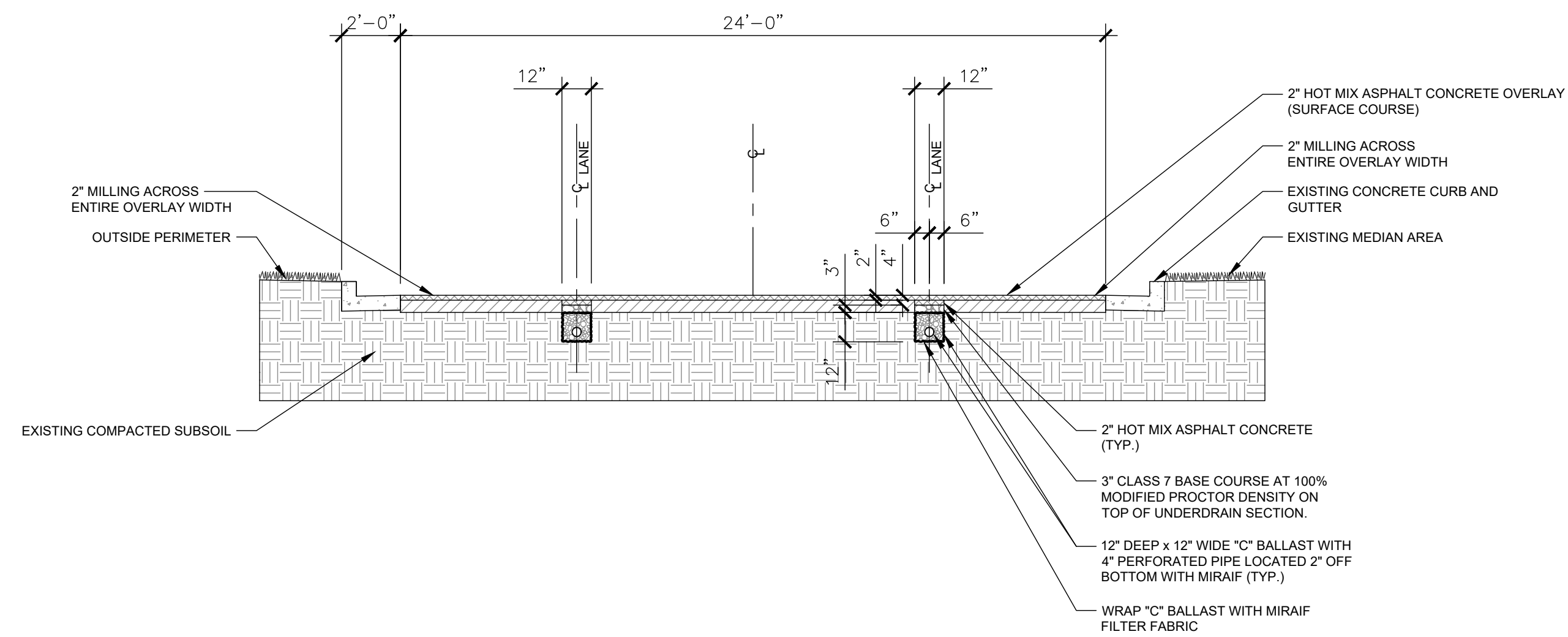
CITY OF LITTLE ROCK, ARKANSAS
 CHENAL PARKWAY UNDERDRAINS
 EAST BOUND LANES OF CHENAL PKWY
 NORTH OF RAHLING DR INTERSECTION

DEPARTMENT OF PUBLIC WORKS
 CIVIL ENGINEERING
 701 W. MARKHAM
 LITTLE ROCK, ARKANSAS 72201

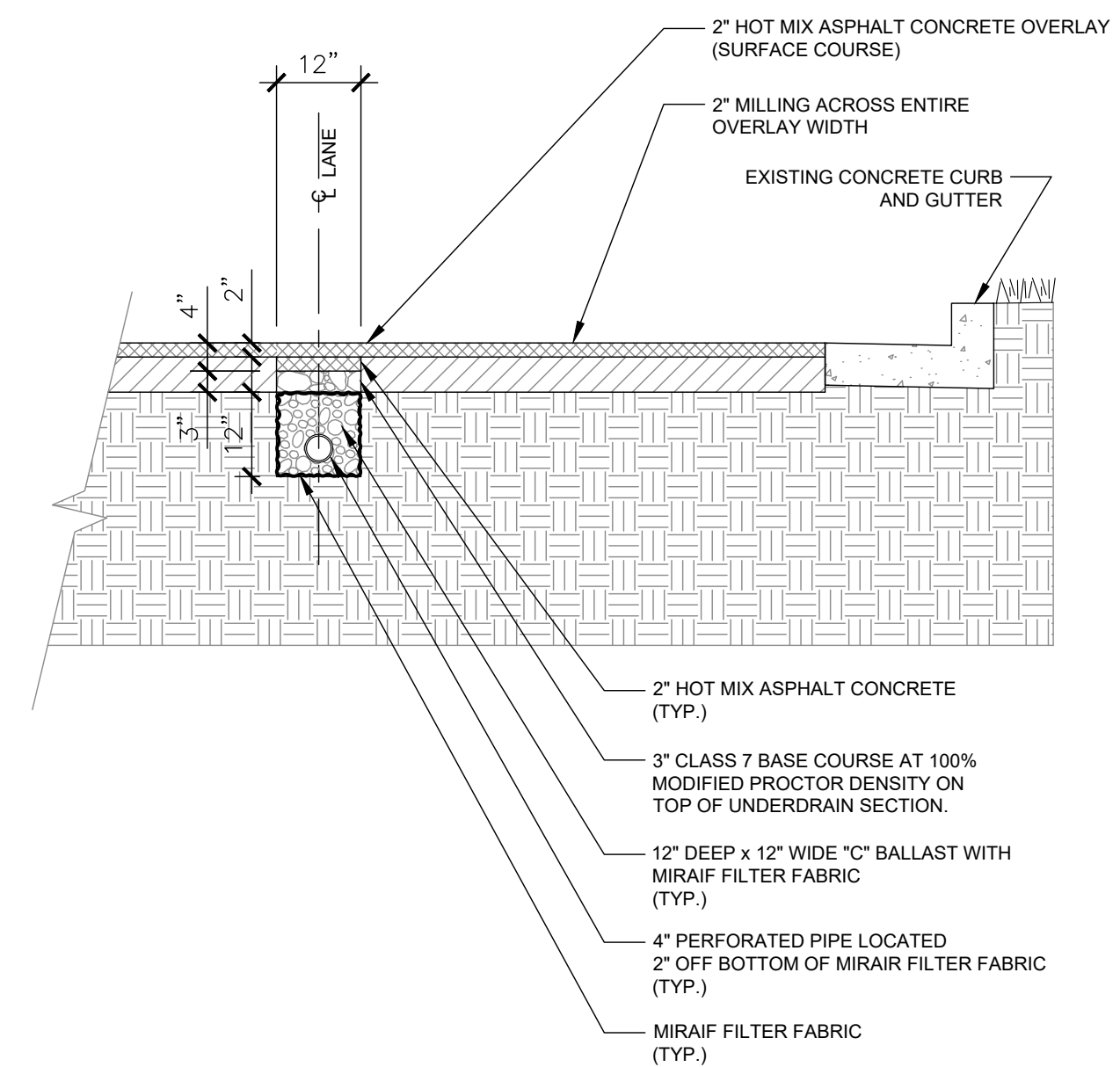
90% SUBMITTAL
 REVIEW ONLY

DRAWN BY
 LCJ
 DESIGNED
 BLV
 CHECKED
 BLV
 DATE
 03-19-19
 SCALE
 1" = 30'-0"
 PROJECT NO.
 05-17-DR-352
 SHEET NO.
C5

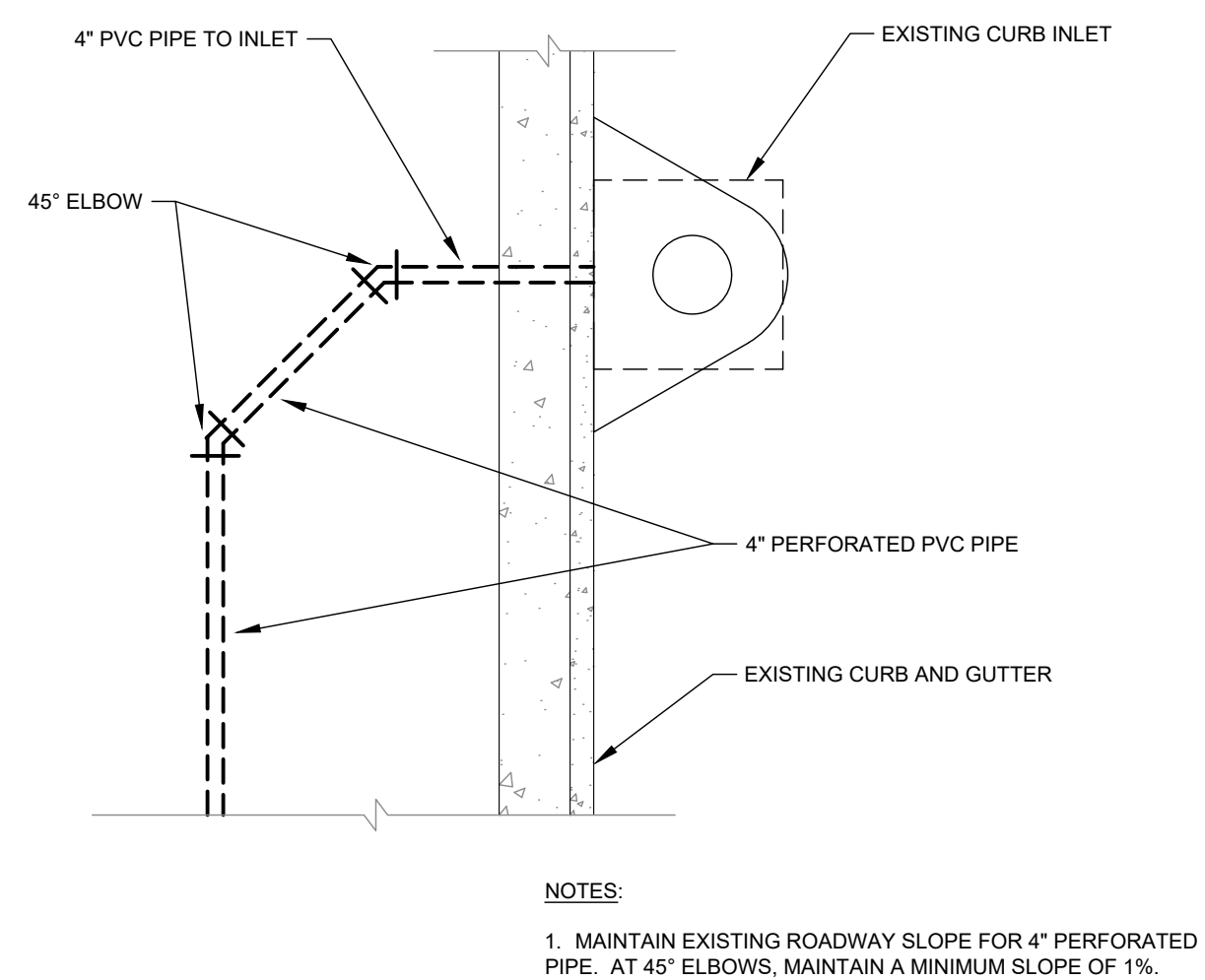




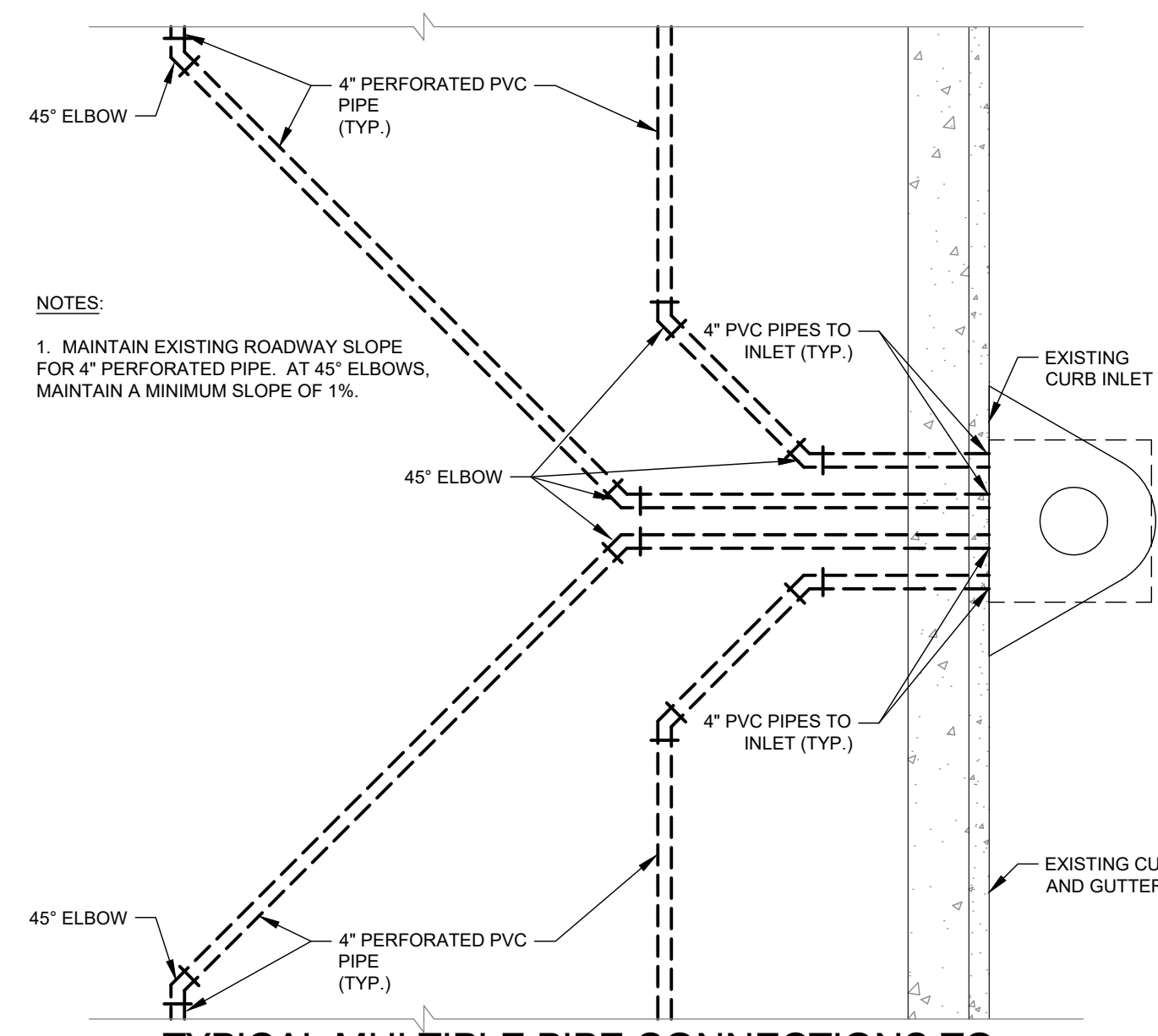
1 TYPICAL SECTION THRU CHENAL PARKWAY
1/4" = 1'-0"



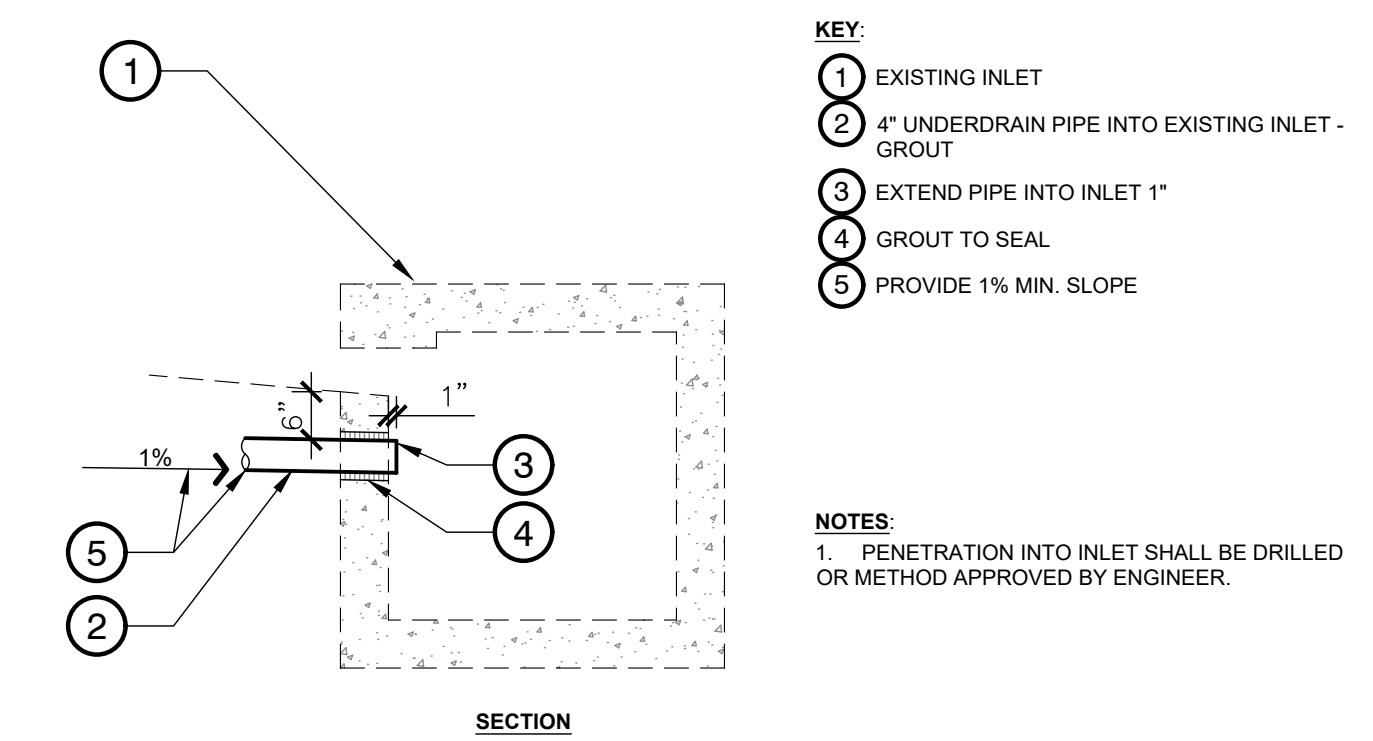
2 TYPICAL SECTION OF UNDERDRAIN
1/2" = 1'-0"



3 TYPICAL SINGLE CONNECTION OF PIPE TO EXISTING INLET
1/4" = 1'-0"



4 TYPICAL MULTIPLE PIPE CONNECTIONS TO EXISTING INLET
1/4" = 1'-0"



5 TYPICAL SECTION OF UNDERDRAIN PIPE CONNECTION AT EXISTING INLET
1/2" = 1'-0"

KEY:
1 EXISTING INLET
2 4" UNDERDRAIN PIPE INTO EXISTING INLET - GROUT
3 EXTEND PIPE INTO INLET 1"
4 GROUT TO SEAL
5 PROVIDE 1% MIN. SLOPE

NOTES:
 1. PENETRATION INTO INLET SHALL BE DRILLED OR METHOD APPROVED BY ENGINEER.

REVISIONS	DATE

CITY OF LITTLE ROCK, ARKANSAS
 CHENAL PARKWAY UNDERDRAINS
 SITE DETAILS

DEPARTMENT OF PUBLIC WORKS
 CIVIL ENGINEERING
 701 W. MARKHAM
 LITTLE ROCK, ARKANSAS 72201

90% SUBMITTAL
 REVIEW ONLY

DRAWN BY
 LCJ
 DESIGNED
 BLV
 CHECKED
 BLV
 DATE
 03-19-19
 SCALE
 SEE SHEET
 PROJECT NO.
 05-17-DR-352
 SHEET NO.
C6