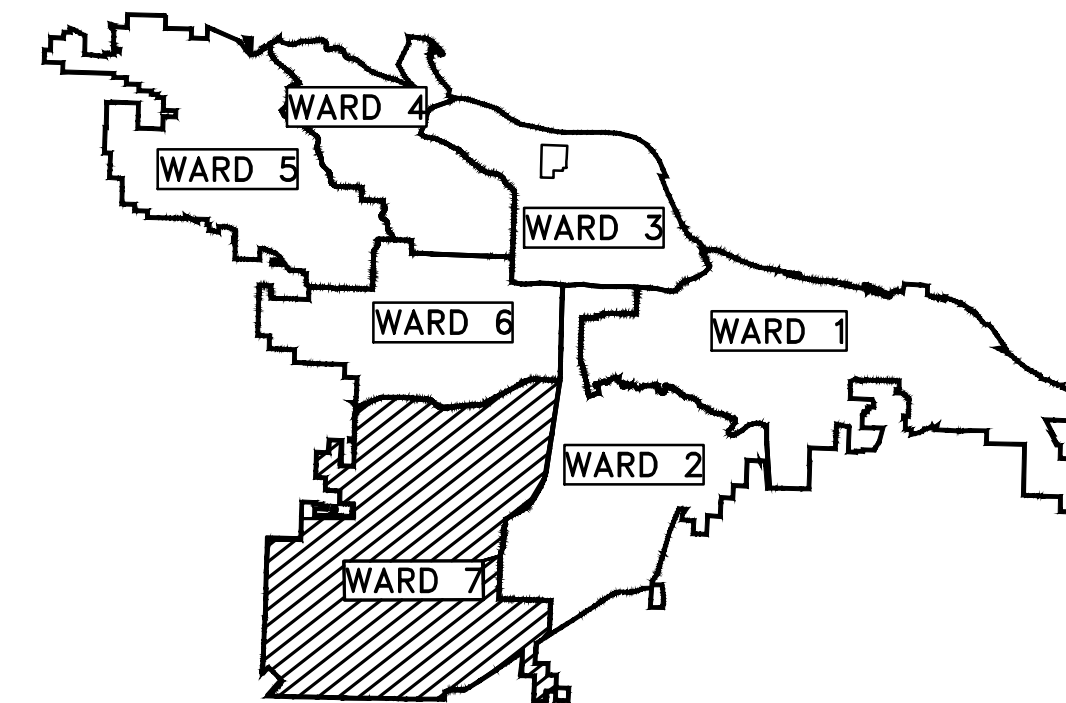
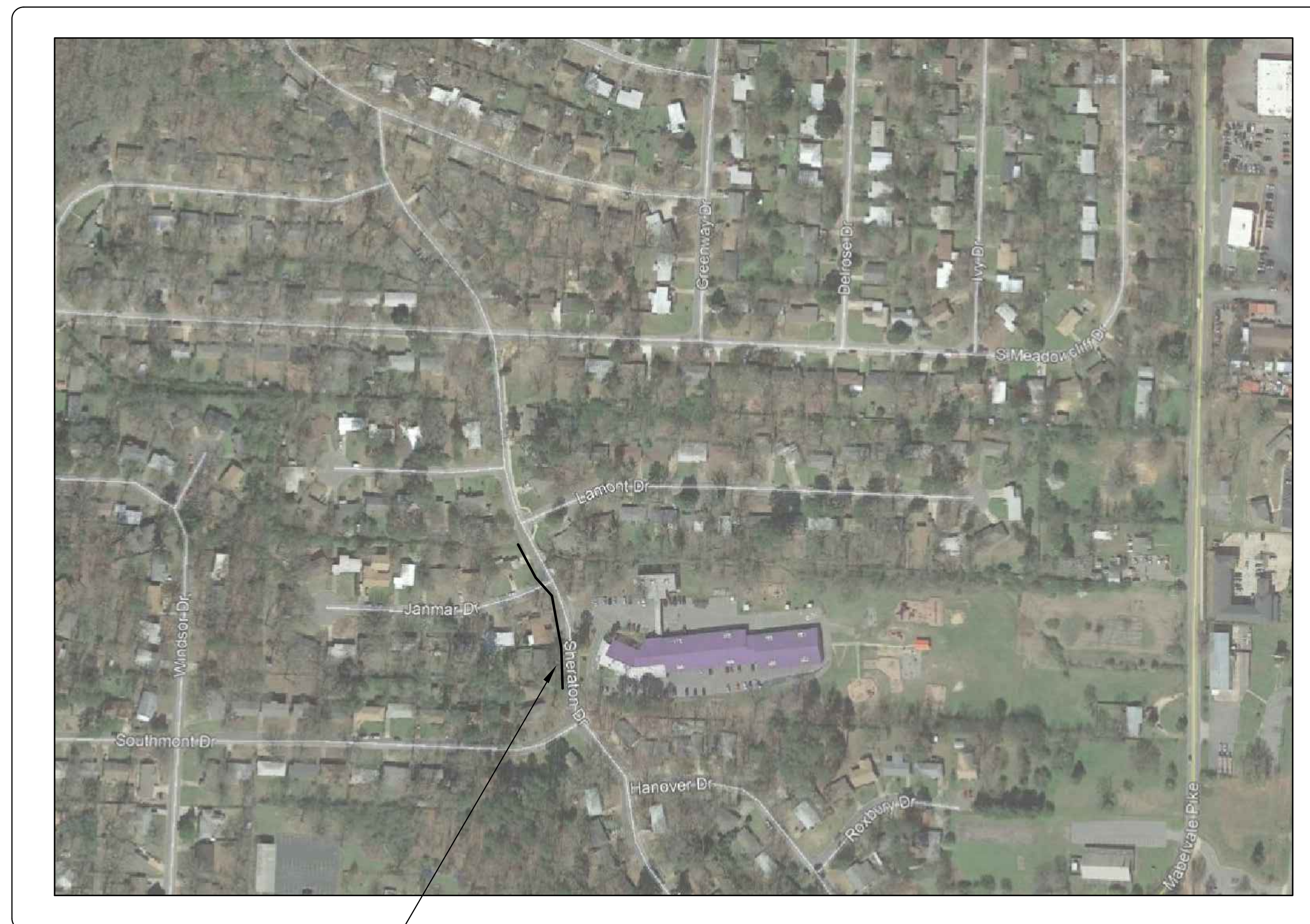


CLR PROJECT 07-15-DR-275 JANMAR DRIVE DRAINAGE IMPROVEMENTS LITTLE ROCK, ARKANSAS



PROJECT LOCATION – WARD 7

SHEET NO.	TITLE
C1	COVER SHEET
C2	GENERAL NOTES, LEGEND AND QUANTITIES
C3	90% PLAN AND PROFILE
C4	EROSION CONTROL
C5	MISC. DETAILS



PROJECT LOCATION



**2019-2021
BOND PROGRAM**

DEPARTMENT OF PUBLIC WORKS
CIVIL ENGINEERING
701 WEST MARKHAM STREET
LITTLE ROCK, ARKANSAS 72201



HR 320 Executive Court
Suite 304
Little Rock, AR 72205
501.907.7153

REVISIONS	DATE

CITY OF LITTLE ROCK, ARKANSAS
JANMAR DRIVE DRAINAGE IMPROVEMENTS

COVER SHEET

DEPARTMENT OF PUBLIC WORKS
CIVIL ENGINEERING
701 W. MARKHAM
LITTLE ROCK, ARKANSAS 72201



SEAL

DRAWN BY LL
DESIGNED JRH
CHECKED JRH
DATE 04/05/19
SCALE NTS
PROJECT NO. 07-15-DR-275
SHEET NO. C1

REVISIONS	DATE

PRICING OF ESTIMATED QUANTITIES			
CLR PROJECT 07-15-DR-275			
JANMAR DRIVE DRAINAGE IMPROVEMENTS			
8-Apr-19			
ITEM #	ITEM DESCRIPTION	UNIT	QUANTITY
2.01	SITE PREPERATION	LS	1
3.01	UNCLASSIFIED EXCAVATION	CY	35
7.06	CONCRETE DRIVEWAY (6" THICK), STANDARD FINISH	SF	1450
8.03	CONCRETE CURB AND GUTTER (CLASS 3)	LF	24
9.03	CONCRETE FLUME - SPECIAL	SF	20
10.01	JUNCTION BOX - 6'X6'	EA	1
10.03	CURB INLET - ROUND 60" BASE, PW-10 REQ'D	EA	1
10.06R	CURB INLET - 6' BOX, PW-10 REQ'D	EA	1
13.42P	STORM DRAIN PIPE, 42" SIDEDRAIN	LF	282
13.42A	STORM DRAIN PIPE, 51"X31" CROSS-DRAIN	LF	43
13.42X	22.5 DEGREE BEND, 42" SIDEDRAIN	EA	2
13.61	TIE INTO EXISITNG JUNCTION BOX	EA	1
14.01	SOLID SODDING, MATCH EXISTING	SY	710
16.01	MAINTENANCE OF TRAFFIC	LS	1
17.01	PAVEMENT REPAIRS	SY	26
18.01	REMOVE AND REPLACE FENCE	LF	28
18.45	RIPRAP - GROUTED	CY	11
19.10	FINAL CLEANUP	LS	1
24.02	CHECK DAM	CY	1
24.11	SILT FENCE - TYPE A (SFA)	LF	300
24.14	STORM DRAIN OUTLET PROTECTION (ST)	EA	1
606.42P	FLARED END SECTION 42" HDPE	EA	1
625.01	GEOTEXTILE FABRIC (TYPE 1)	SY	10
SS3.0	4" SCHEDULE 40 SANITARY SEWER W/CLEANOUTS	LF	40

Add item for trench and excavation safety. LS

EXISTING		PROPOSED
IRON ROD	○ IR	PROPOSED CONTOUR
PK NAIL	○ PK	PROPOSED SPOT ELEVATION
R.R. SPIKE	○ RR(Sp)	PROPOSED SPOT CURB ELEVATION
CONC. MONUMENT	□ CM	STORM SEWER - PIPE
WATER VALVE	⊗ WV	STORM SEWER - MITERED END SECTION
WATER METER	□ WM	STORM SEWER - GRATE INLET
FIRE HYDRANT	▽ FH	STORM SEWER - JUNCTION BOX
GAS METER	□ GM	STORM SEWER - FLARED END SECTION
GAS VALVE	⊗ GV	STORM SEWER - HEADWALL
CLEAN-OUT	○ CO	STORM SEWER - NO WING
GUARD POST (BOLLARD)	● GP	STORM SEWER - SINGLE WING
SIGN POST	+	STORM SEWER - DOUBLE WING
BENCHMARK	⊕	STORM SEWER - AREA INLET
STORM SEWER MANHOLE	⊙	GRADE BREAK LINE
SANITARY SEWER MANHOLE	⊙	HIGH POINT
TELEPHONE MANHOLE	⊙	LOW POINT
ELECTRIC MANHOLE	⊙	CUT LINE
TELEPHONE BOX	⊙	FILL LINE
ELECTRIC BOX	⊙	SANITARY SEWER PIPE
CABLE BOX	⊙	SANITARY SEWER MANHOLE
UTILITY POLE	⊙	PROPOSED CURB
GUY WIRE	⊙	PROPOSED CONCRETE
LIGHT POLE	⊙	CONSTRUCTION - ENTRANCE/EXIT
POST OR POLE (TYPE AS NOTED)	⊙	CHECK DAM
MAILBOX	⊙	DIVERSION BERM
DECIDUOUS TREE	⊙	DOWNDRAIN STRUCTURE - TEMPORARY
EVERGREEN/CONIFEROUS TREE	⊙	ROCK DAM
BUSH	⊙	SEDIMENT BARRIER - SILT FENCE
PROPERTY LINE	⊙	SEDIMENT BARRIER - GRAVEL RING
SETBACK LINE	⊙	SEDIMENT BARRIER - BLOCK & GRAVEL
EASEMENT LINE	⊙	SEDIMENT BARRIER - BLOCK
CURB	⊙	TEMPORARY SEDIMENT BASIN
FENCE	⊙	SILT FENCE - TYPE A
OVERHEAD ELECTRIC	⊙	SILT FENCE - TYPE B
OVERHEAD TELEPHONE	⊙	SILT FENCE - TYPE C
OVERHEAD CABLE	⊙	STORM DRAIN OUTLET PROTECTION
UNDERGROUND TELEPHONE	⊙	SURFACE ROUGHENING
UNDERGROUND ELECTRIC	⊙	DISTURBED AREA STABILIZATION - TEMPORARY STABILIZATION
UNDERGROUND CABLE	⊙	DISTURBED AREA STABILIZATION - TEMPORARY GRASSING
WATER LINE	⊙	DISTURBED AREA STABILIZATION - PERMANENT GRASSING
SEWER LINE	⊙	MATTING/BLANKETS
GAS LINE	⊙	
STORM SEWER/CULVERT	⊙	
EDGE OF WOODS	⊙	
CONTOUR LINE	⊙	

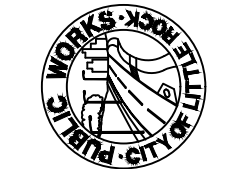
CITY OF LITTLE ROCK, ARKANSAS
 JANMAR DRIVE DRAINAGE IMPROVEMENTS
 GENERAL NOTES, LEGEND AND QUANTITIES

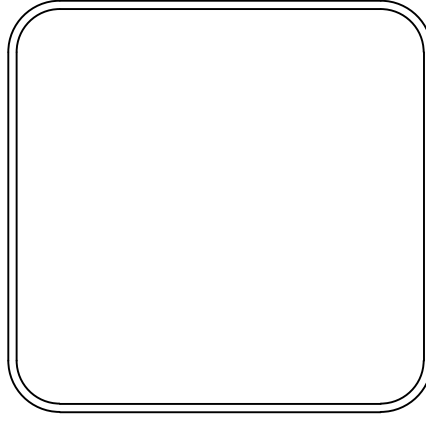
DEPARTMENT OF PUBLIC WORKS
 CIVIL ENGINEERING
 701 W. MARKHAM
 LITTLE ROCK, ARKANSAS 72201

DRAWN BY
 LL
 DESIGNED
 JRH
 CHECKED
 JRH
 DATE
 04/05/19
 SCALE
 NTS
 PROJECT NO.
 07-15-DR-275
 SHEET NO.
 C2

REVISIONS	DATE

CITY OF LITTLE ROCK, ARKANSAS
JANMAR DRIVE DRAINAGE IMPROVEMENTS
PLAN & PROFILE

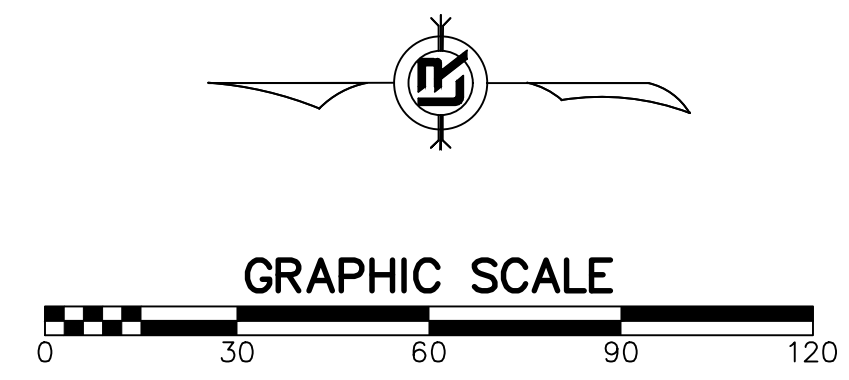
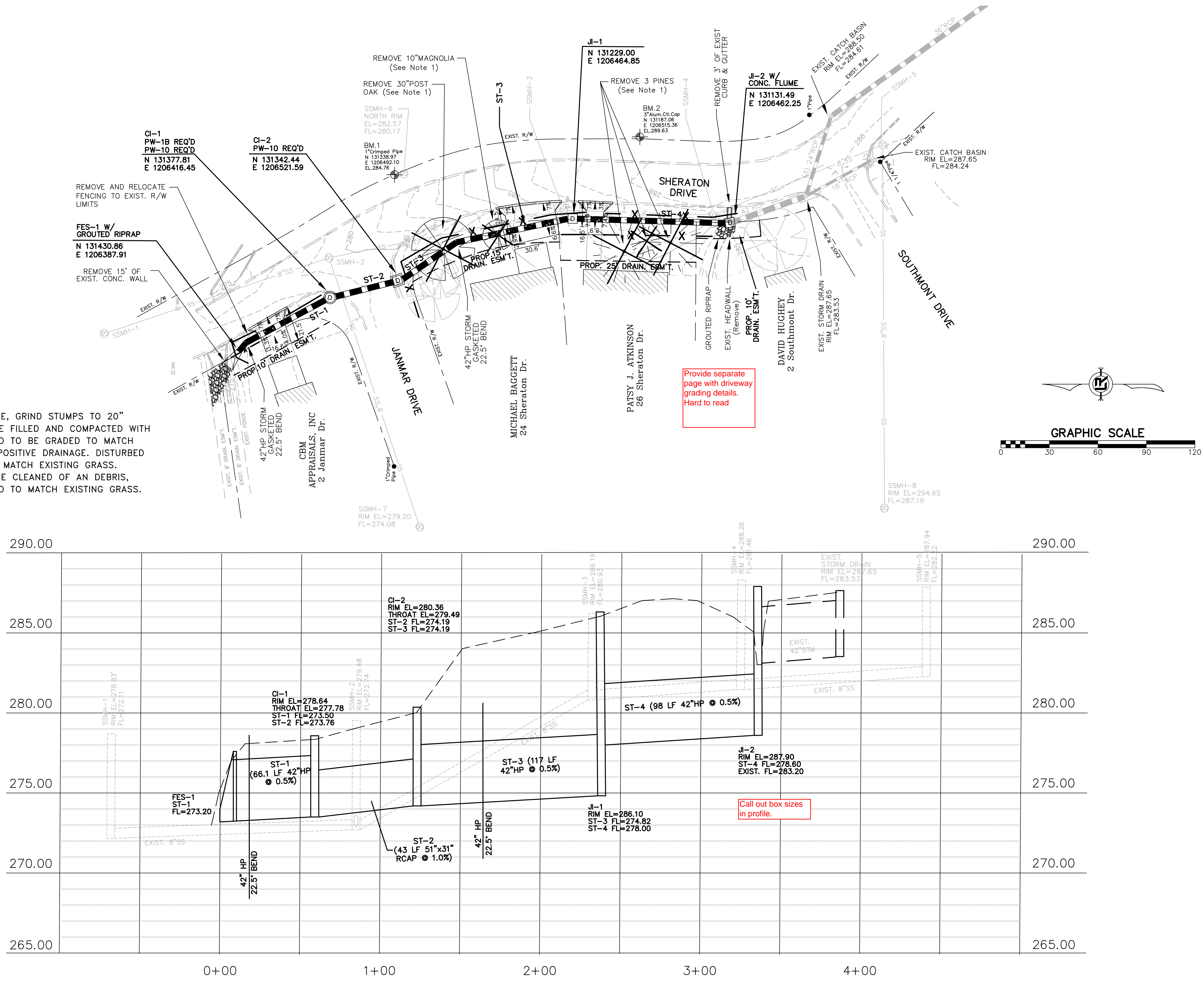

 DEPARTMENT OF PUBLIC WORKS
 CIVIL ENGINEERING
 701 W. MARKHAM
 LITTLE ROCK, ARKANSAS 72201



DRAWN BY LL
DESIGNED JRH
CHECKED JRH
DATE 04/05/19
SCALE 1"=5'/50'
PROJECT NO. 07-15-DR-275
SHEET NO. C3

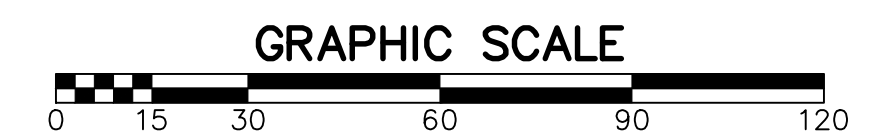
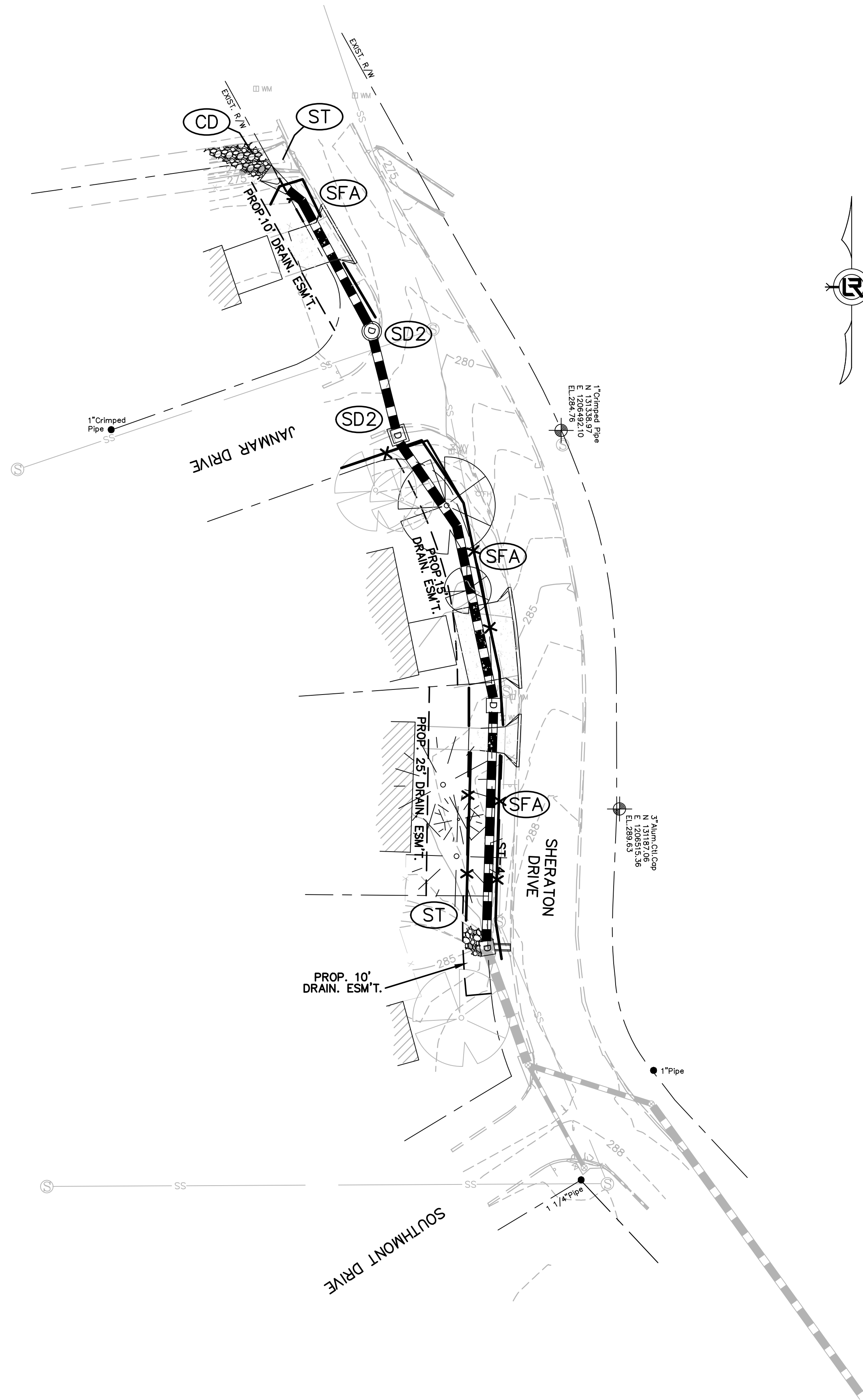
GENERAL NOTE:

1. REMOVE AND HAUL OFF TREE, GRIND STUMPS TO 20" MINIMUM DEPTH. VOID TO BE FILLED AND COMPACTED WITH TOPSOIL. DISTURBED GROUND TO BE GRADED TO MATCH EXISTING AND TO PROVIDE POSITIVE DRAINAGE. DISTURBED GROUND TO BE SODDED TO MATCH EXISTING GRASS.
2. ALL DISTURBED AREAS TO BE CLEANED OF AN DEBRIS, GRADED, AND SODDED. SOD TO MATCH EXISTING GRASS.



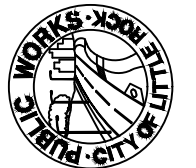
Provide separate page with driveway grading details. Hard to read

Call out box sizes in profile.

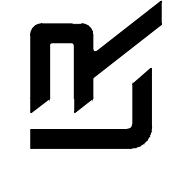


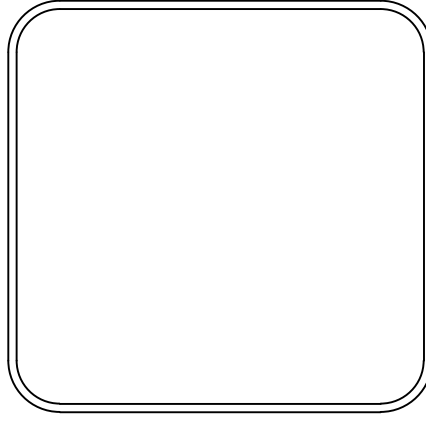
REVISIONS	DATE

CITY OF LITTLE ROCK, ARKANSAS
JANMAR DRIVE DRAINAGE IMPROVEMENTS
EROSION CONTROL



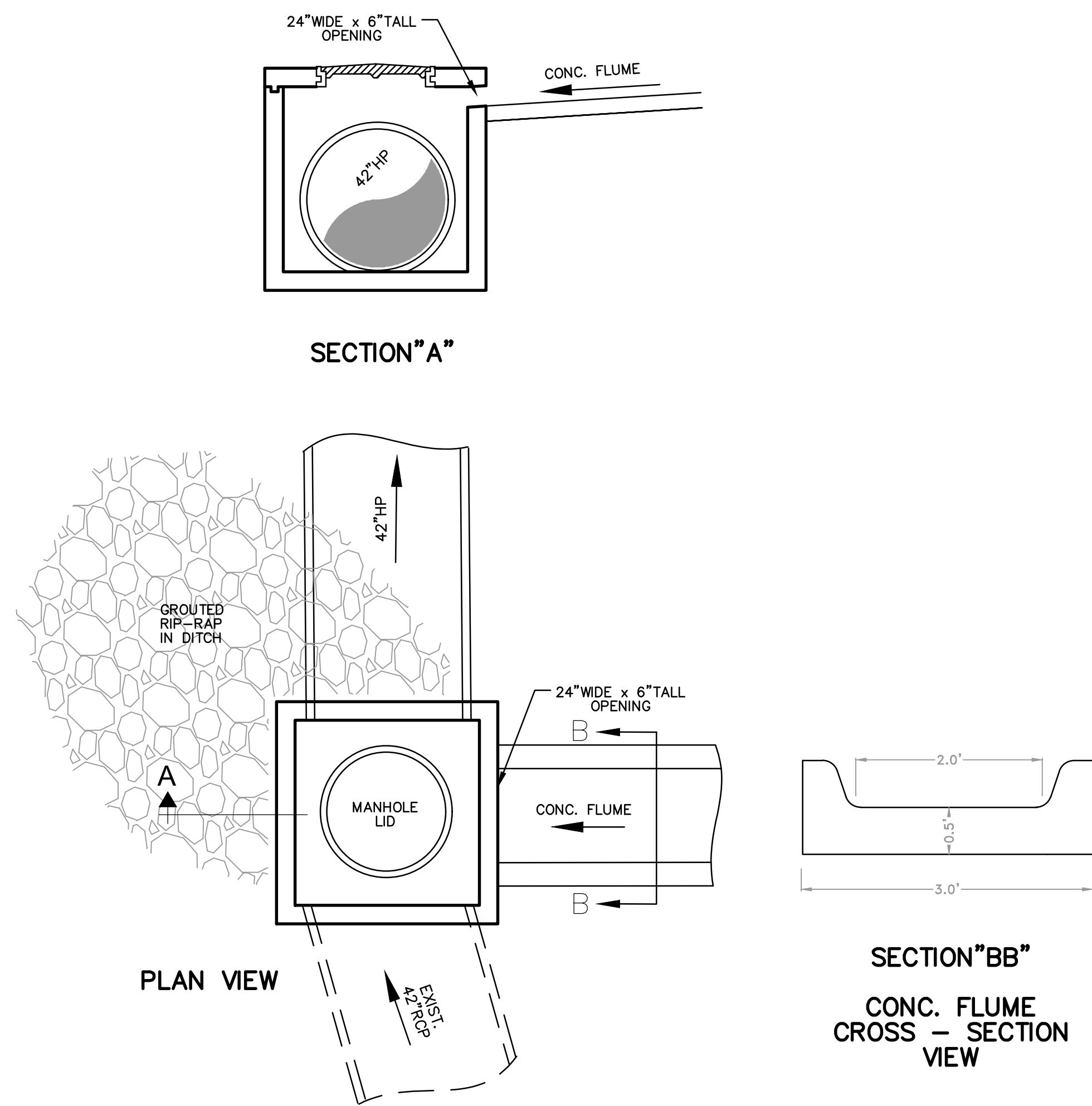
DEPARTMENT OF PUBLIC WORKS
 CIVIL ENGINEERING
 701 W. MARKHAM
 LITTLE ROCK, ARKANSAS 72201





DRAWN BY LL
DESIGNED JRH
CHECKED JRH
DATE 04/05/19
SCALE 1"=30'
PROJECT NO. 07-15-DR-275
SHEET NO. C4

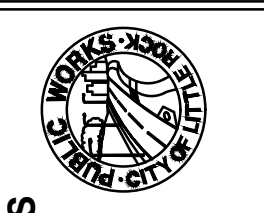
REVISIONS	DATE



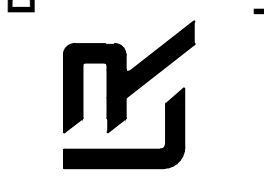
J1-2 & CONCRETE FLUME DETAILS
 NOT TO SCALE

CITY OF LITTLE ROCK, ARKANSAS
 JANMAR DRIVE DRAINAGE IMPROVEMENTS

MISC. DETAILS



DEPARTMENT OF PUBLIC WORKS
 CIVIL ENGINEERING
 701 W. MARKHAM
 LITTLE ROCK, ARKANSAS 72201



DRAWN BY	LL
DESIGNED	JRH
CHECKED	JRH
DATE	04/05/19
SCALE	1"=30'
PROJECT NO.	07-15-DR-275
SHEET NO.	C5