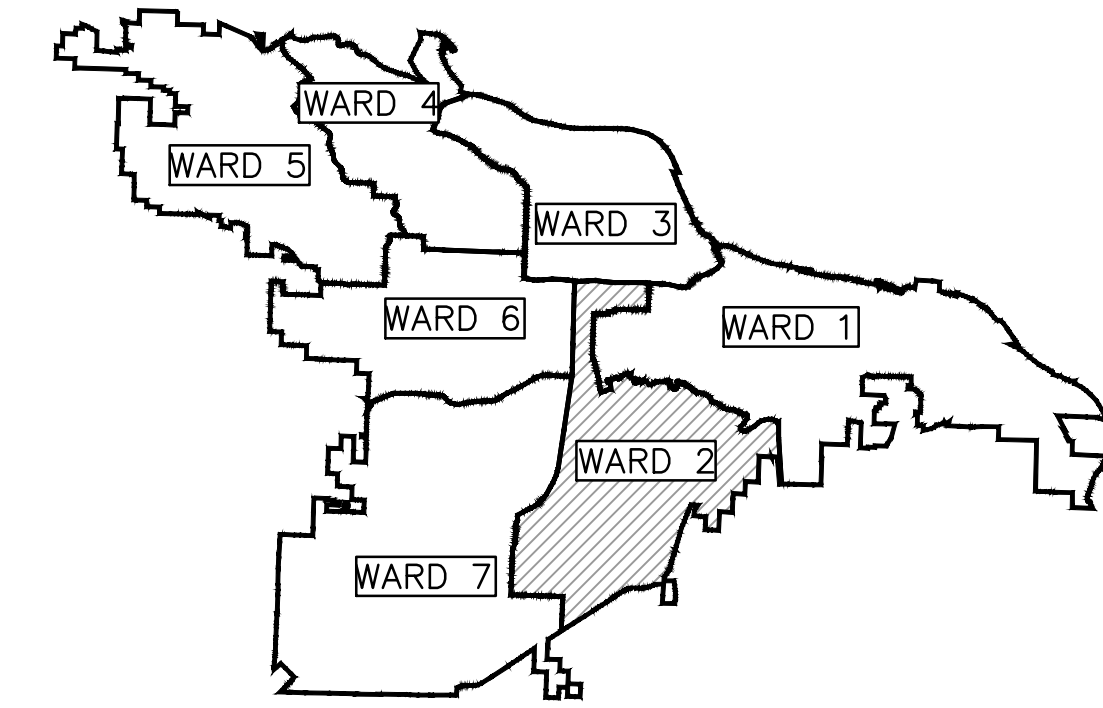


# W - 10TH STREET RECONSTRUCTION

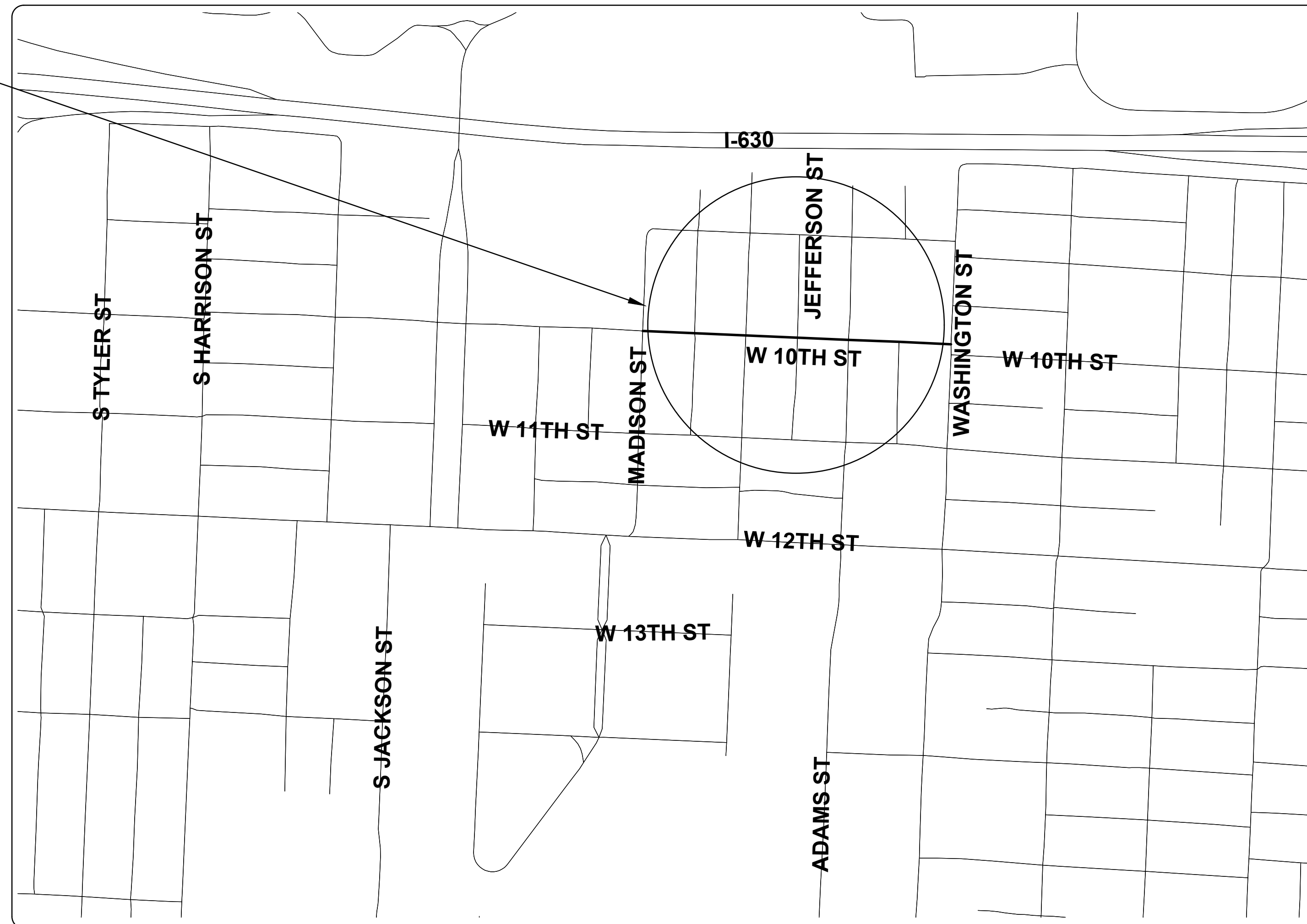
## MADISON ST TO WASHINGTON ST

### CLR PROJECT #02-17-ST-82

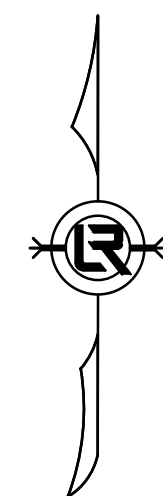


PROJECT LOCATION - WARD 2

PROJECT  
LOCATION



SHEET NO.	TITLE
C0	COVER SHEET
C1	LEGEND AND QUANTITIES
C2	TYPICAL SECTION
C3	EXISTING CONDITION
C4	PLAN AND PROFILE - STA 01+00 TO 6+50
C5	PLAN AND PROFILE - STA 6+50 TO 11+90
C6	CROSS SECTIONS - I
C7	CROSS SECTIONS - II
C8	SURVEY CONTROL PLAN - I
C9	SURVEY CONTROL PLAN - II
C10	EROSION CONTROL PLAN - PHASE I
C11	EROSION CONTROL PLAN - PHASE II & III
C12	MAINTENANCE OF TRAFFIC PLAN
C13	DRAINAGE DETAIL



**2019-2021**  
**BOND PROGRAM**

DEPARTMENT OF PUBLIC WORKS  
CIVIL ENGINEERING  
701 WEST MARKHAM STREET  
LITTLE ROCK, ARKANSAS 72201



**GNE** Designing our client's success  
**GarNat Engineering, LLC**

P.O. Box 116 (72018)  
2909 Military Road  
Benton, AR 72015

Ph (501) 408-4650  
Fx (888) 900-3068  
garnatengineering@gmail.com

REVISIONS	DATE

CITY OF LITTLE ROCK, ARKANSAS  
W-10TH STREET RECONSTRUCTION

COVER SHEET  
90% REVIEW SET

DEPARTMENT OF PUBLIC WORKS  
CIVIL ENGINEERING  
701 W. MARKHAM  
LITTLE ROCK, ARKANSAS 72201



PRELIMINARY

DRAWN BY ATV
DESIGNED VJW & NHC
CHECKED VJW
DATE 07-03-2019
SCALE N.T.S.
PROJECT NO. 02-17-ST-82
SHEET NO. C0

CLR PROJECT 02-17-ST-82			
W-10th STREET IMPROVEMENTS-90% QUANTITIES			
1-Jul-2019			
ITEM#	DESCRIPTION	Unit	Quantity
2.01	SITE PREPARATION	LS	1
3.01	UNCLASSIFIED EXCAVATION	CY	575
3.06	BORROW MATERIAL	CY	575
3.4	TOP SOIL	CY	200
4.01	AGGREGATE BASE COURSE	TON	300
5.01	TACK COAT	GAL	200
6.1	ACHM SURFACE COURSE (TYPE 2)	TON	500
7.06	CONCRETE DRIVEWAY AND APRON (6" THICK)	SF	1950
7.08	ALLEY TURNOUT (8" THICK)	SF	650
8.01	CONCRETE CURB AND GUTTER (CLASS 3)	LF	1925
9.1	CONCRETE SIDEWALK	SF	4400
10.01	JUNCTION BOX	EA	1
10.02	REBUILD INLET TOP	EA	2
10.03	CURB INLET SPECIAL	EA	1
10.05	CURB INLET 5' BOX	EA	8
10.07	WING 3' EXTENSION	EA	11
10.1	WING 6' EXTENSION	EA	1
13.18	STORM DRAIN PIPE, 18" (SIDE DRAIN)	LF	539
13.18	STORM DRAIN PIPE, 18" (CROSS DRAIN)	LF	100
13.24A	STORM DRAIN PIPE, ARCH 29"X18" (CROSS DRAIN)	LF	30
13.24C	STORM DRAIN PIPE, 24" (SIDE DRAIN)	LF	22
14.01	SOLID SOD, BERMUDA	SY	1500
16.01	MAINTENANCE OF TRAFFIC	LS	1
17.01	PAVEMENT REPAIR (PW-25)	SY	70
18.5	ACCESS RAMP	SF	750
18.55	WATER FOR DUST CONTROL	GAL	50000
19.01	FINAL CLEANUP	LS	1
23.01	B STONE	TON	320
24.05	ROCK DAM (RD)	CY	8
24.06	SEDIMENT BARRIER, SILT FENCE (SD1)	EA	13
24.12	SILT FENCE (TYPE A)	LF	1150
24.09	SEDIMENT BARRIER, BLOCK (SD-4)	EA	12
26.1	TRENCH EXCAVATION & SAFETY	LS	1
606.24C	FLARED END SECTION 24" RCP	EA	1

EXISTING		PROPOSED
IRON ROD	○ IR	CONTOUR
PK NAIL	○ PK	SPOT ELEVATION
R.R. SPIKE	○ RR(Sp)	SPOT CURB ELEVATION
CONC. MONUMENT	□ CM	STORM SEWER - PIPE
WATER VALVE	⊗ WV	STORM SEWER - MITERED END SECTION
WATER METER	□ WM	STORM SEWER - GRATE INLET
FIRE HYDRANT	⊕ FH	STORM SEWER - JUNCTION BOX
GAS METER	⊕ GM	STORM SEWER - FLARED END SECTION
GAS VALVE	⊕ GV	STORM SEWER - HEADWALL
CLEAN-OUT	○ CO	STORM SEWER - INLET WITH SINGLE EXTENSION
GUARD POST (BOLLARD)	● GP	STORM SEWER - INLET WITH DOUBLE EXTENSION
SIGN POST		STORM SEWER - AREA INLET
BENCHMARK	⊕	GRADE BREAK LINE
STORM SEWER MANHOLE	⊕	HIGH POINT
SANITARY SEWER MANHOLE	⊕	LOW POINT
TELEPHONE MANHOLE	⊕	CUT LINE
ELECTRIC MANHOLE	⊕	FILL LINE
TELEPHONE BOX	⊕	SANITARY SEWER PIPE
ELECTRIC BOX	⊕	SANITARY SEWER MANHOLE
CABLE BOX	⊕	CURB
UTILITY POLE	⊕	CONCRETE
GUY WIRE	⊕	CONSTRUCTION - ENTRANCE/EXIT
LIGHT POLE	⊕	CHECK DAM
POST OR POLE (TYPE AS NOTED)	⊕	DIVERSION BERM
MAILBOX	⊕	DOWNDRAIN STRUCTURE - TEMPORARY
DECIDUOUS TREE	⊕	ROCK DAM
EVERGREEN/CONIFEROUS TREE	⊕	SEDIMENT BARRIER - SILT FENCE
BUSH	⊕	SEDIMENT BARRIER - GRAVEL RING
PROPERTY LINE	---	SEDIMENT BARRIER - BLOCK & GRAVEL
SETBACK LINE	---	SEDIMENT BARRIER - BLOCK
EASEMENT LINE	---	TEMPORARY SEDIMENT BASIN
CURB	---	SILT FENCE - TYPE A
FENCE	X X	SILT FENCE - TYPE B
OVERHEAD UTILITY	--- OHP --- OHP	SILT FENCE - TYPE C
UNDERGROUND TELEPHONE	--- UGT --- UGT --- UGT	STORM DRAIN OUTLET PROTECTION
UNDERGROUND ELECTRIC	--- UGE --- UGE --- UGE	SURFACE ROUGHENING
WATER LINE	--- 8"W --- 8"W --- 8"W	DISTURBED AREA STABILIZATION -TEMPORARY STABILIZATION
SEWER LINE	--- S --- S --- S --- S	DISTURBED AREA STABILIZATION -TEMPORARY GRASSING
GAS LINE	--- GAS --- GAS --- GAS	DISTURBED AREA STABILIZATION -PERMANENT GRASSING
STORM SEWER/CULVERT	--- 24" CMP/RCP/DIP	MATting/BLANKETS
CONTOUR LINE	---	

REVISIONS	DATE

CITY OF LITTLE ROCK, ARKANSAS  
**W - 10TH STREET RECONSTRUCTION**  
 LEGEND & QUANTITIES  
 90% REVIEW SET

DEPARTMENT OF PUBLIC WORKS  
 CIVIL ENGINEERING  
 701 W. MARKHAM  
 LITTLE ROCK, ARKANSAS 72201

PRELIMINARY

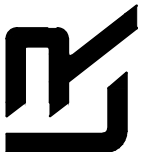
DRAWN BY	ATV
DESIGNED	VJW & NHC
CHECKED	VJW
DATE	07-03-2019
SCALE	N.T.S.
PROJECT NO.	02-1-ST-82
SHEET NO.	C1

REVISIONS    DATE


CITY OF LITTLE ROCK, ARKANSAS  
W-10th STREET RECONSTRUCTION

TYPICAL SECTION  
90% REVIEW SET

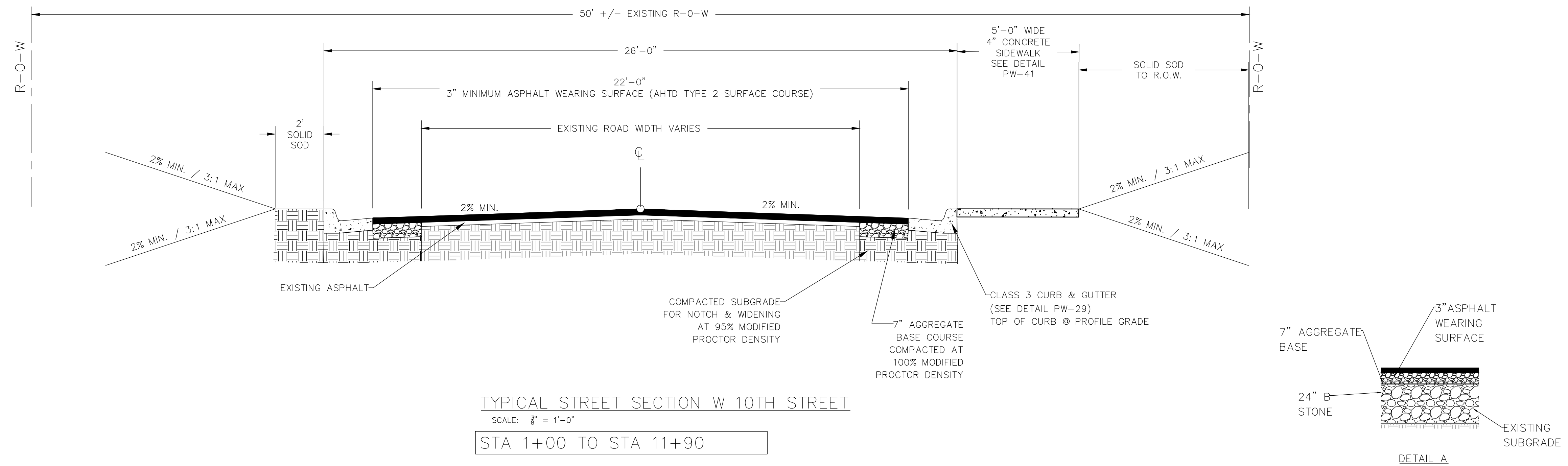
DEPARTMENT OF PUBLIC WORKS  
CIVIL ENGINEERING  
701 W. MARKHAM  
LITTLE ROCK, ARKANSAS 72201



PRELIMINARY

DRAWN BY  
ATV  
DESIGNED  
VJW & NHC  
CHECKED  
VJW  
DATE  
07-03-2019  
SCALE  
N.T.S.  
PROJECT NO.  
02-17-ST-82  
SHEET NO.

C2



GENERAL STREET CONSTRUCTION NOTES:

1. WORK ASSOCIATED WITH THIS DETAIL COMPLY WITH LITTLE ROCK PW-22 DETAIL.
2. IF OR WHERE DIRECTED, SAWCUT, UNDERCUT, EXCAVATE, AND RECONSTRUCT SUBGRADE WITH B STONE PER DETAIL A AS DIRECTED BY ENGINEER TO REPAIR SUBGRADE FAILURES.



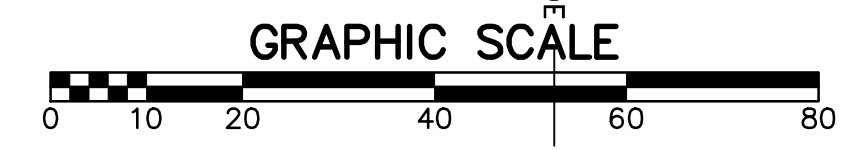
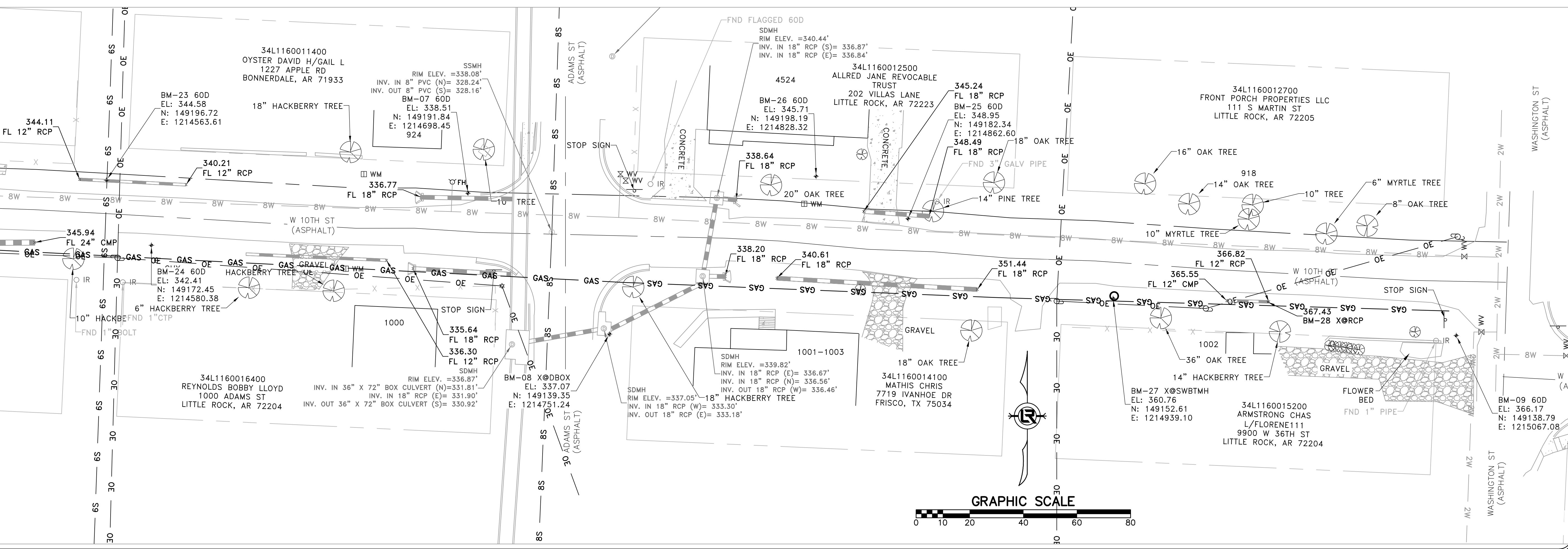
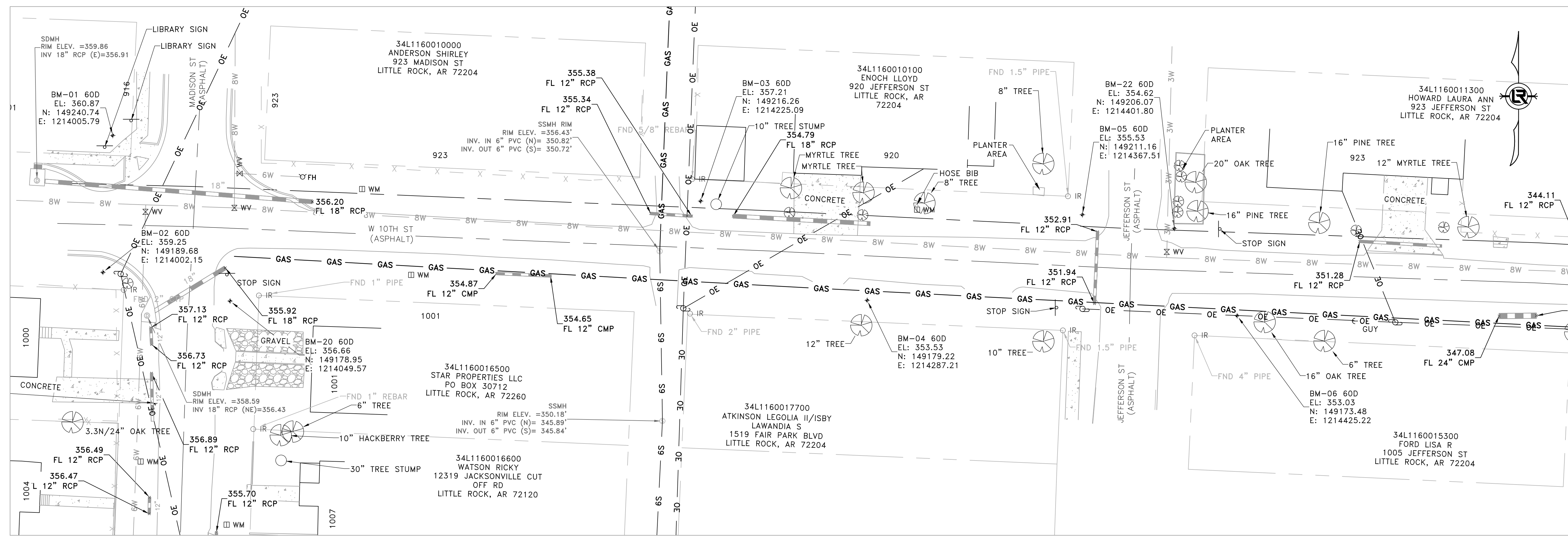
REVISIONS	DATE

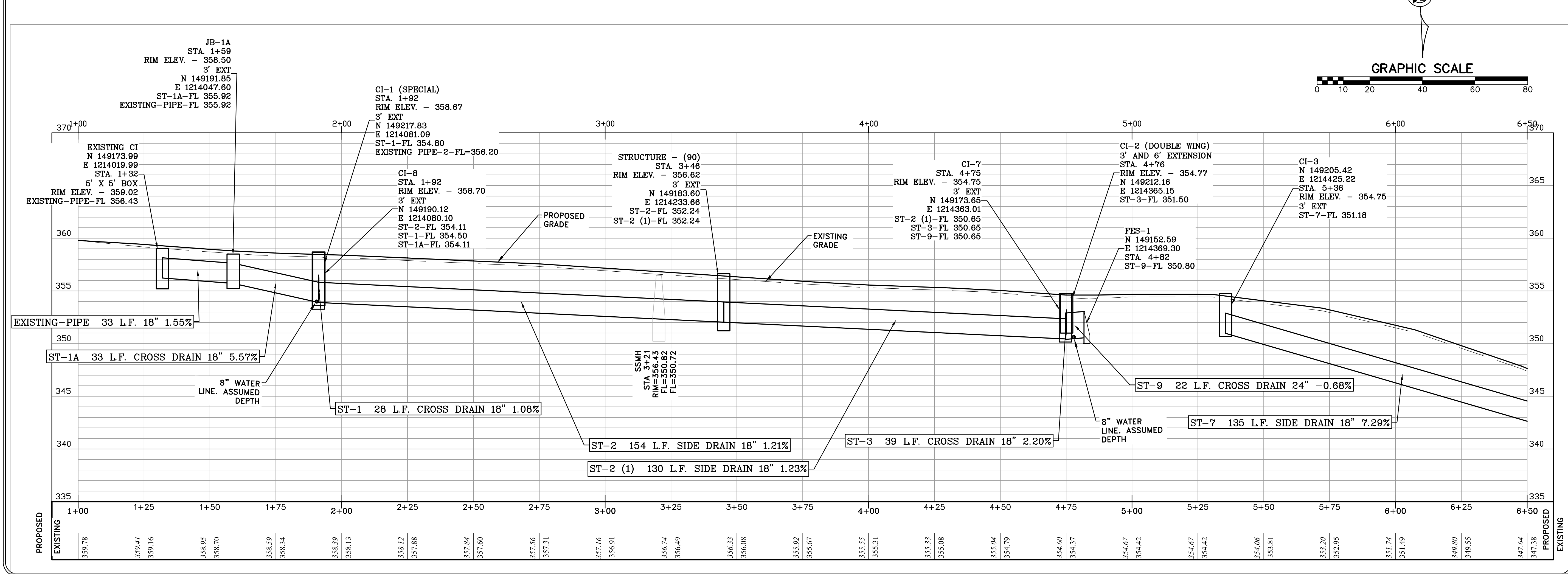
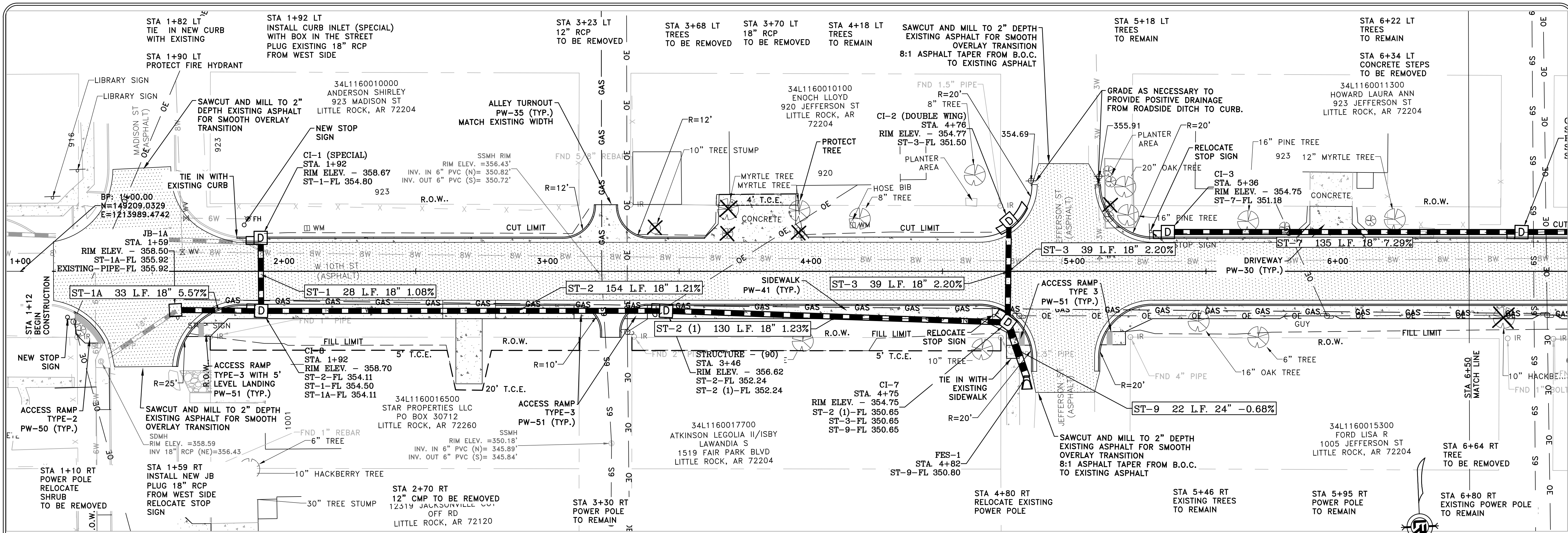
CITY OF LITTLE ROCK, ARKANSAS  
**W-10th STREET RECONSTRUCTION**  
 EXISTING CONDITION  
 90% SUBMITTAL

DEPARTMENT OF PUBLIC WORKS  
 CIVIL ENGINEERING  
 701 W. MARKHAM  
 LITTLE ROCK, ARKANSAS 72201

PRELIMINARY

DRAWN BY  
**ATV**  
 DESIGNED  
**NHC & ATV**  
 CHECKED  
**VJW**  
 DATE  
**07-03-2019**  
 SCALE  
**1"=20' (22X34)**  
 PROJECT NO.  
**02-17-ST-82**  
 SHEET NO.  
**C3**





REVISIONS	DATE

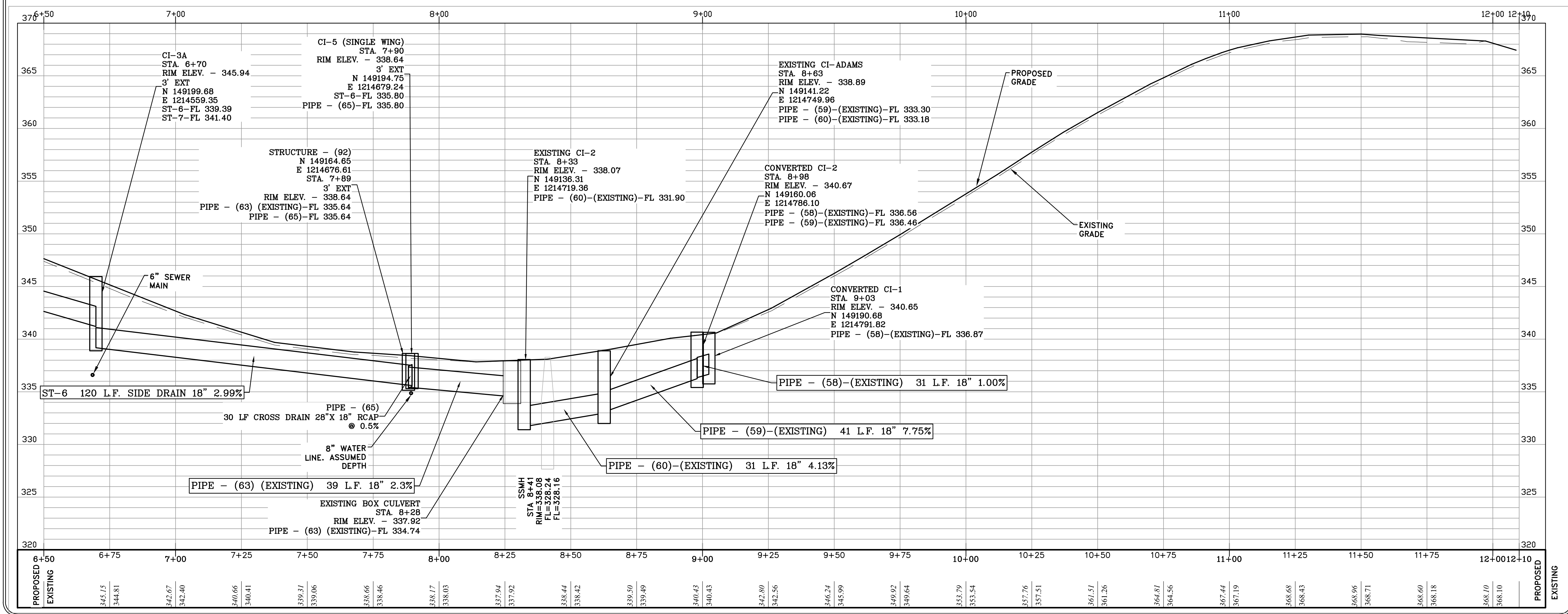
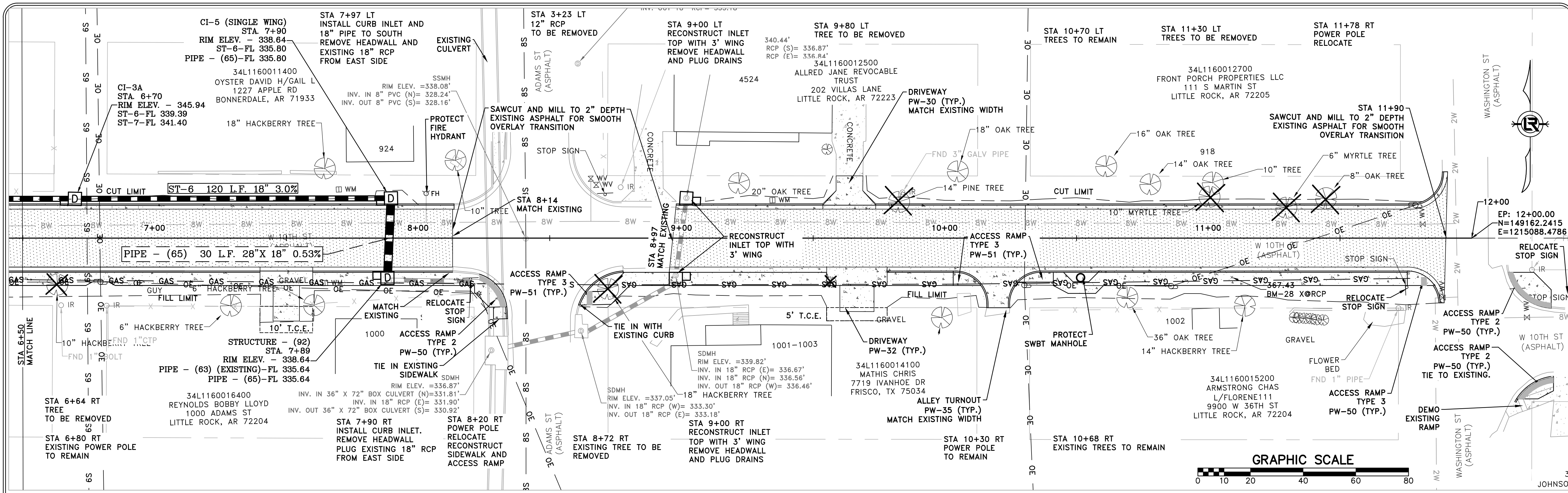
**CITY OF LITTLE ROCK, ARKANSAS**  
**W-10th STREET RECONSTRUCTION**  
**PLAN & PROFILE - STA 01+00 TO 6+50**  
**90% SUBMITTAL**

**DEPARTMENT OF PUBLIC WORKS**  
**CIVIL ENGINEERING**  
**701 W. MARKHAM**  
**LITTLE ROCK, ARKANSAS 72201**

**PRELIMINARY**

**DRAWN BY**  
**ATV**  
**DESIGNED**  
**NHC & VJW**  
**CHECKED**  
**VJW**  
**DATE**  
**07-03-2019**  
**SCALE**  
**1"=20' (22X34)**  
**PROJECT NO.**  
**02-17-ST-82**  
**SHEET NO.**  
**C4**





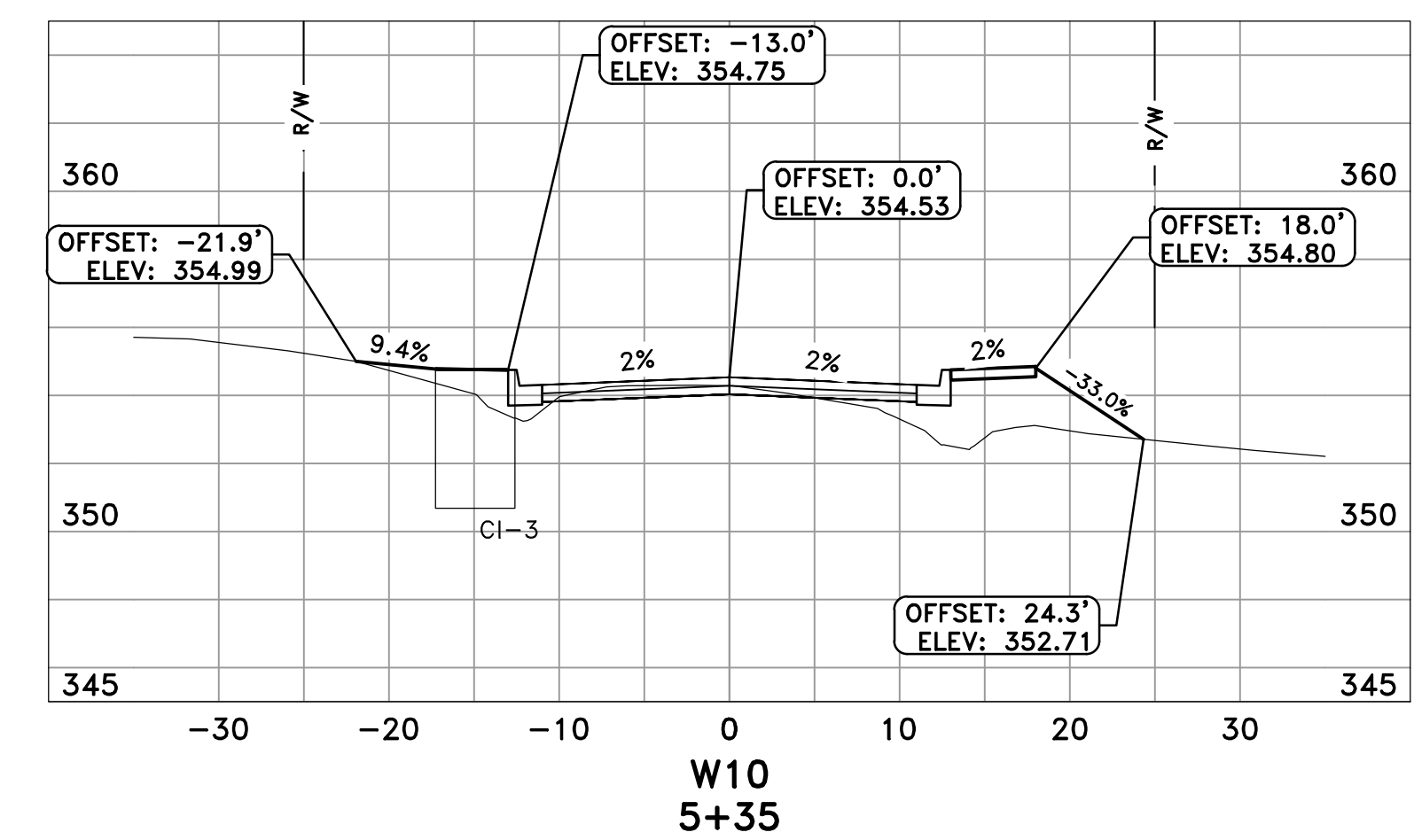
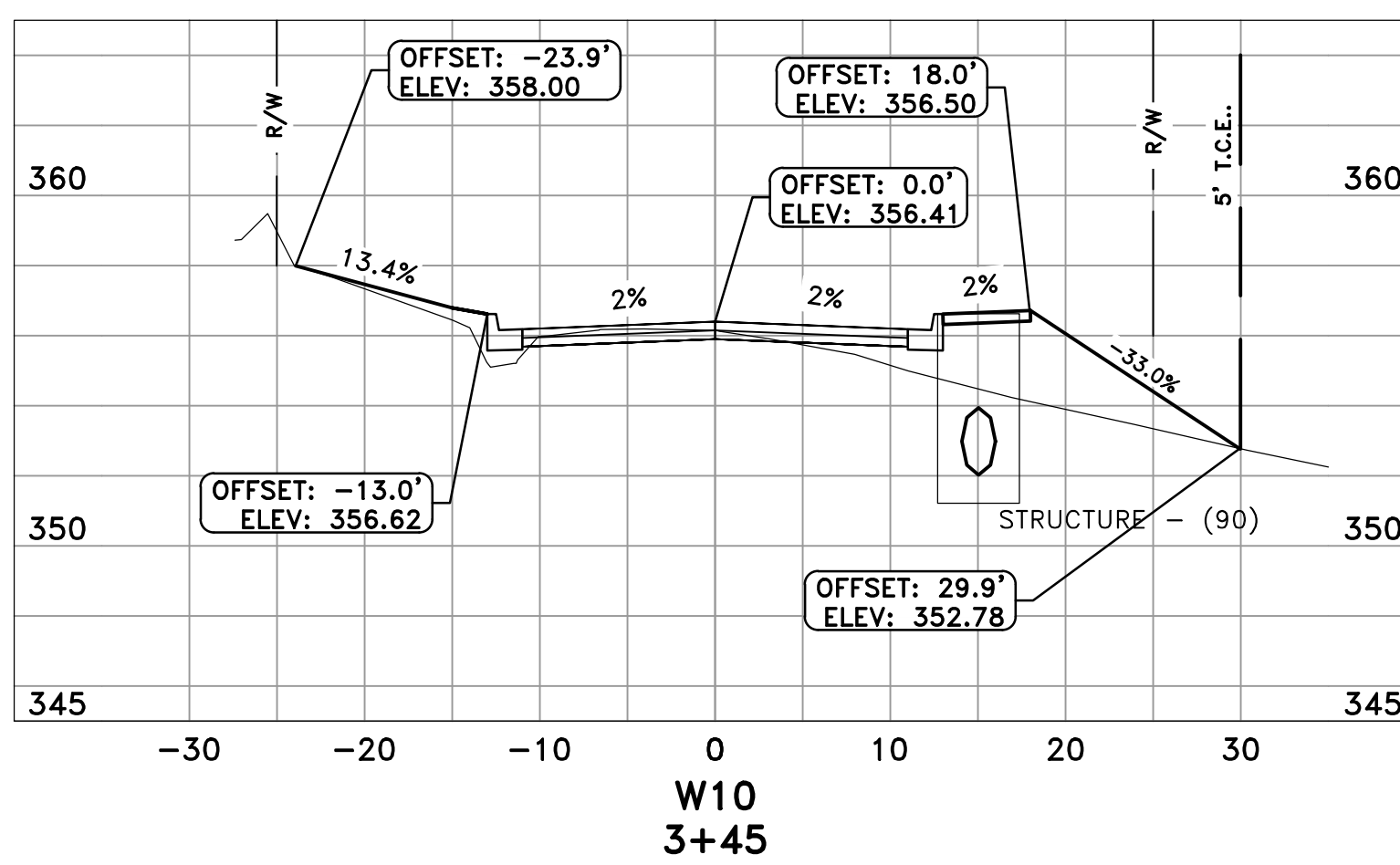
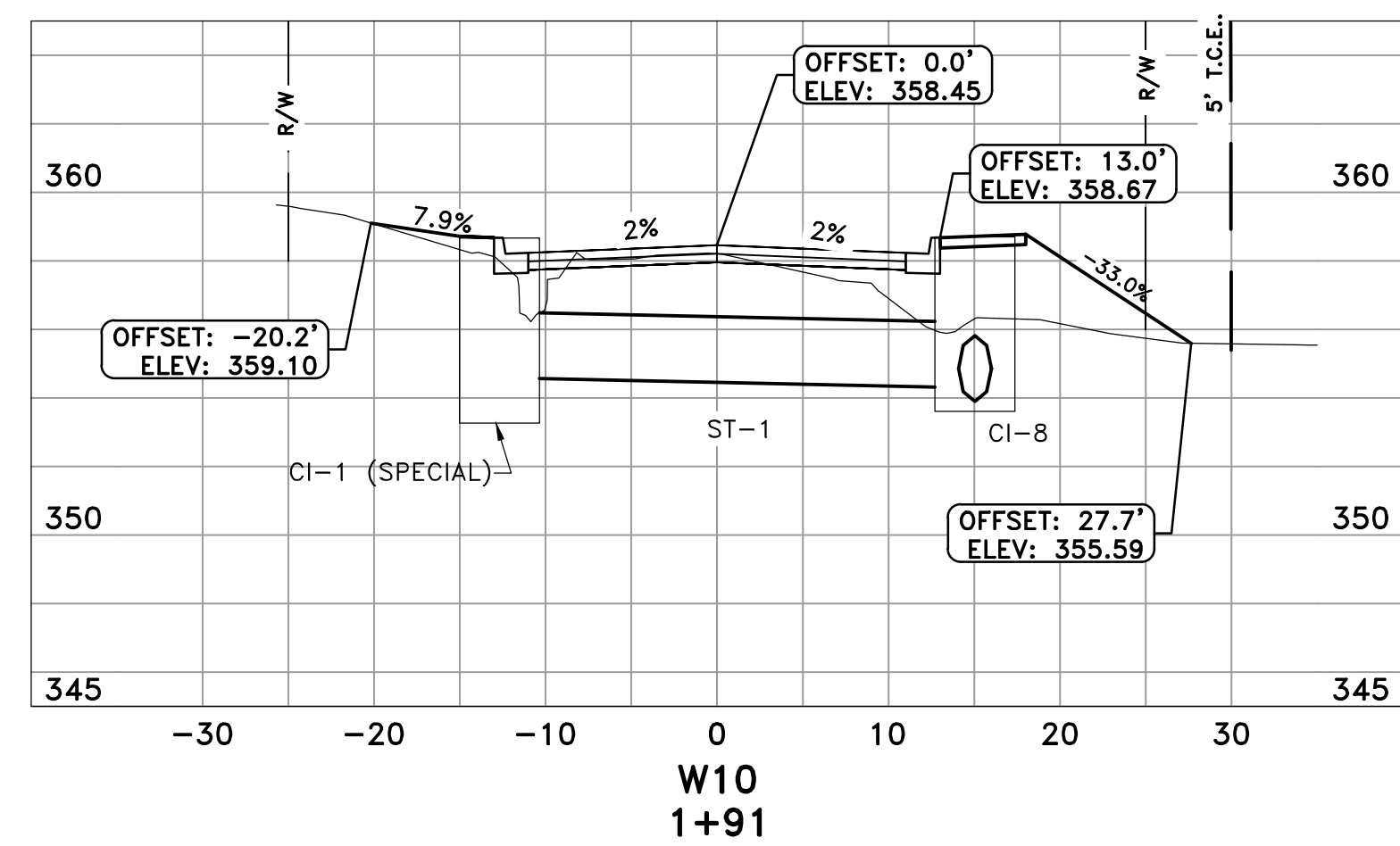
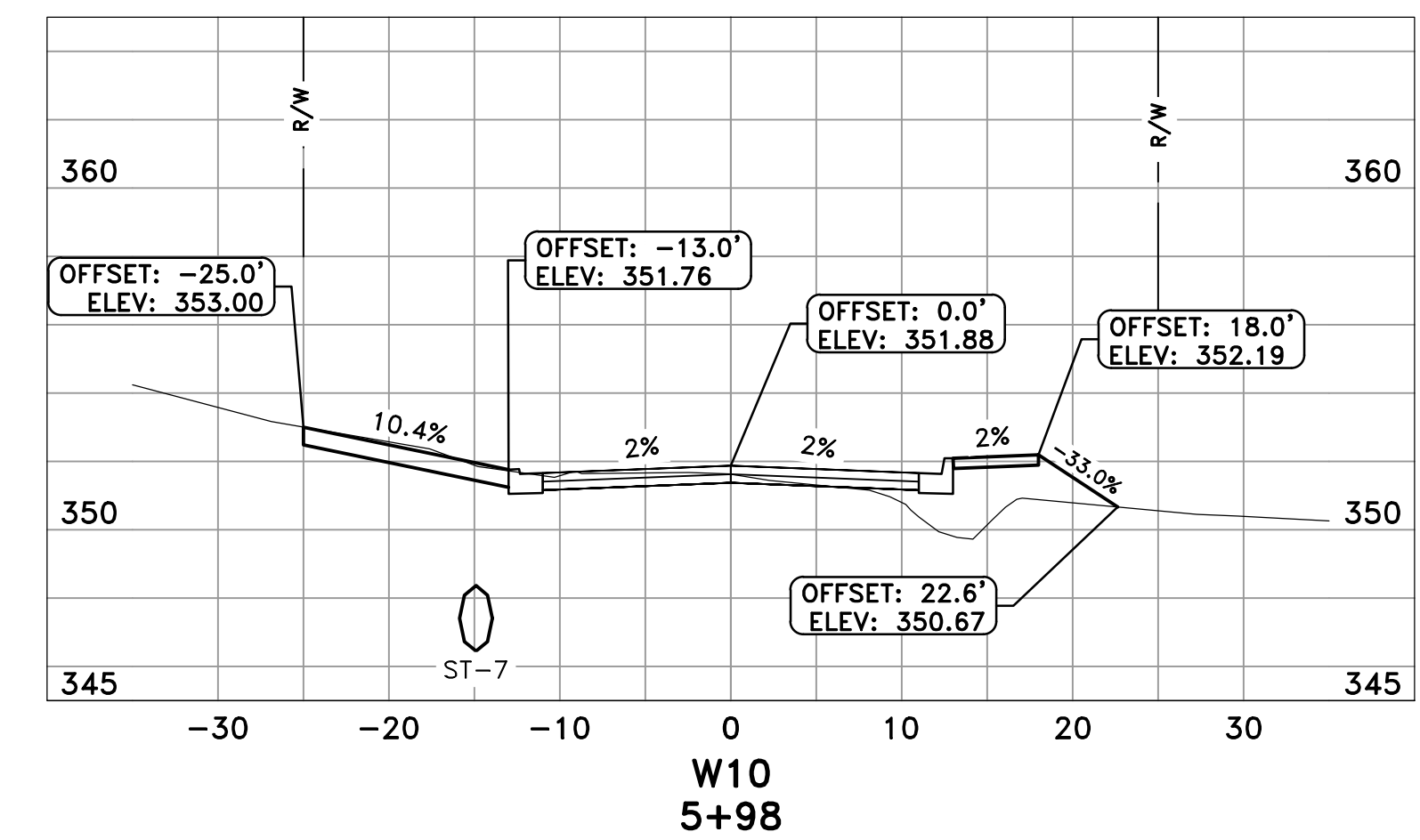
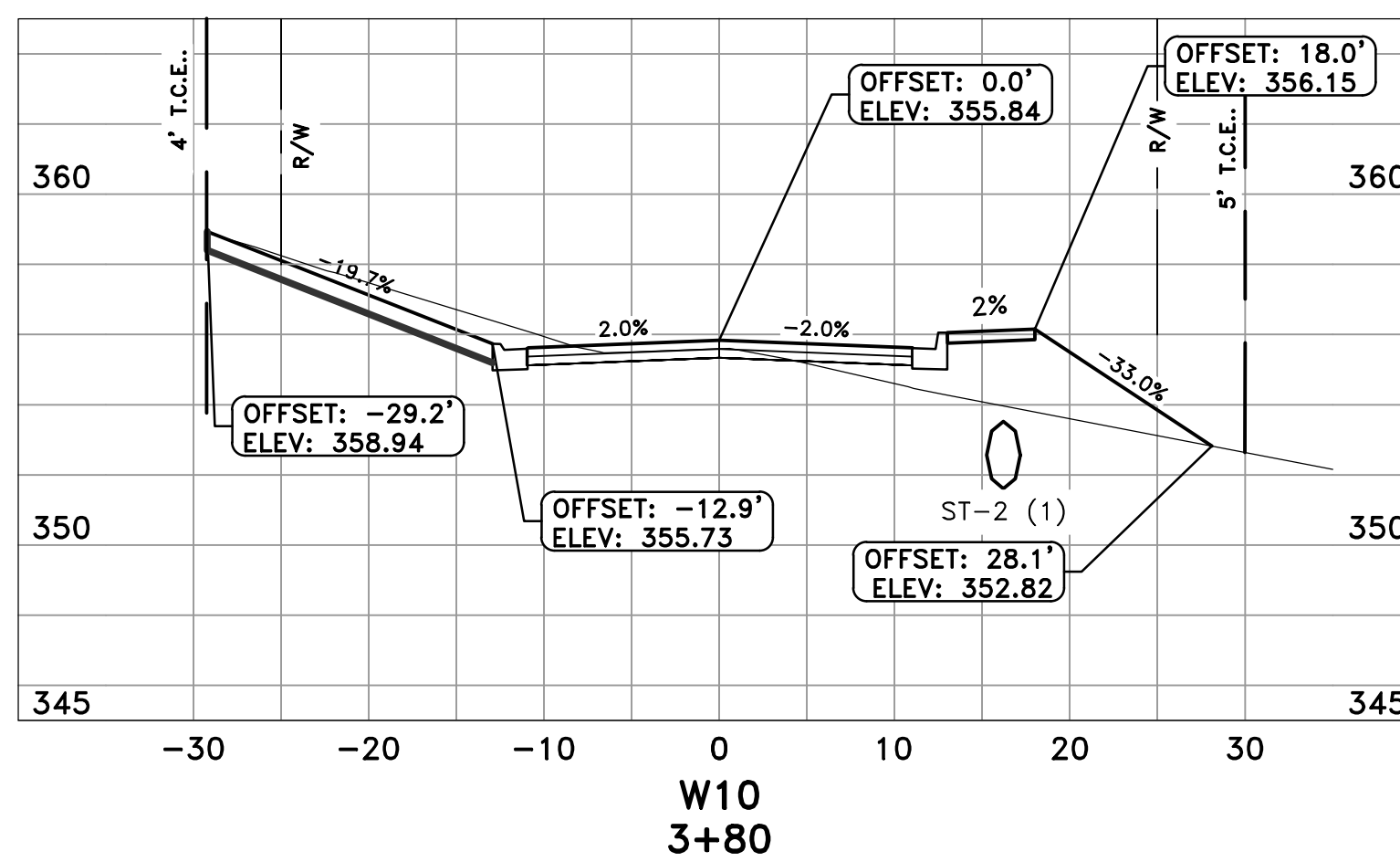
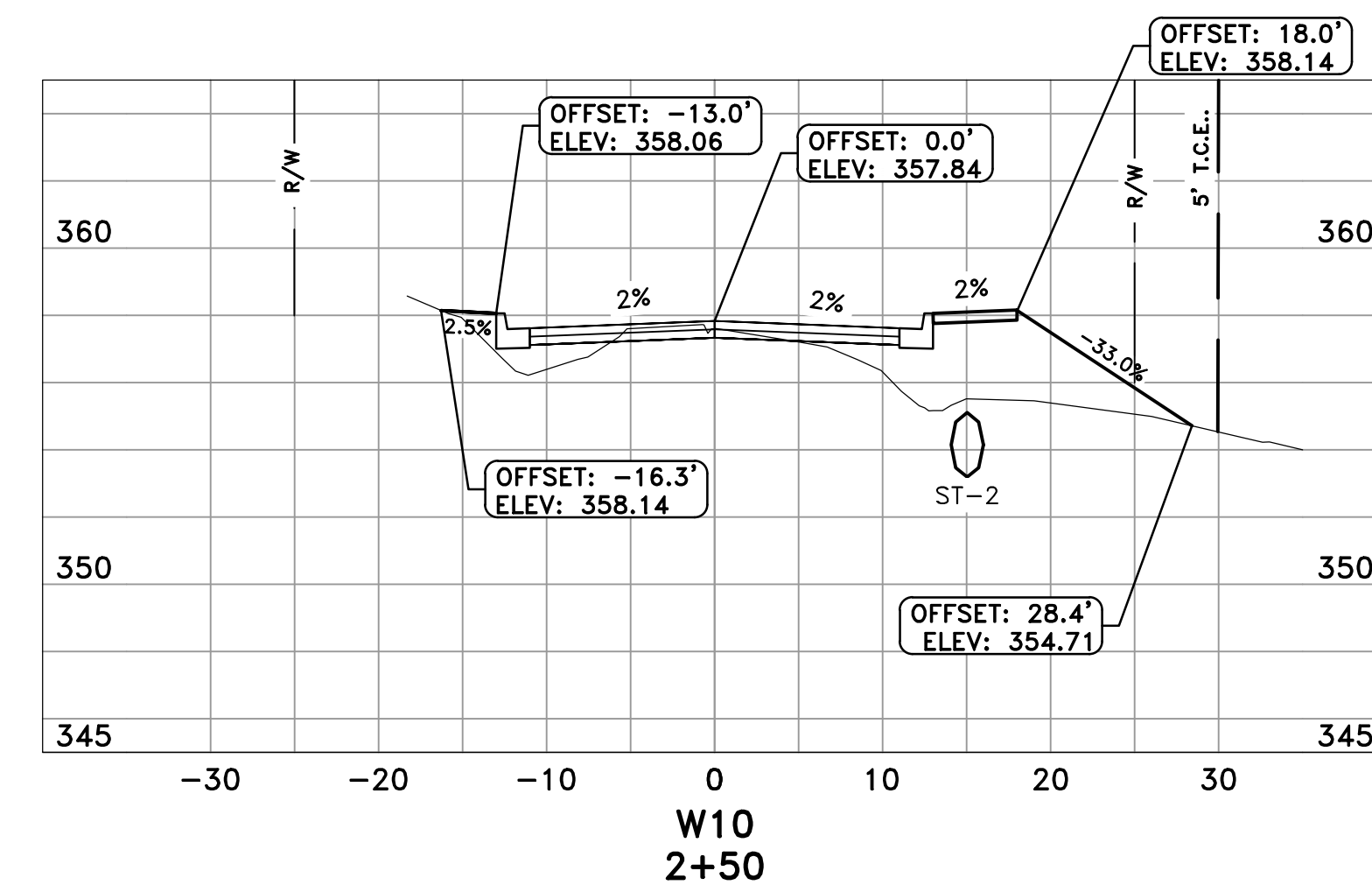
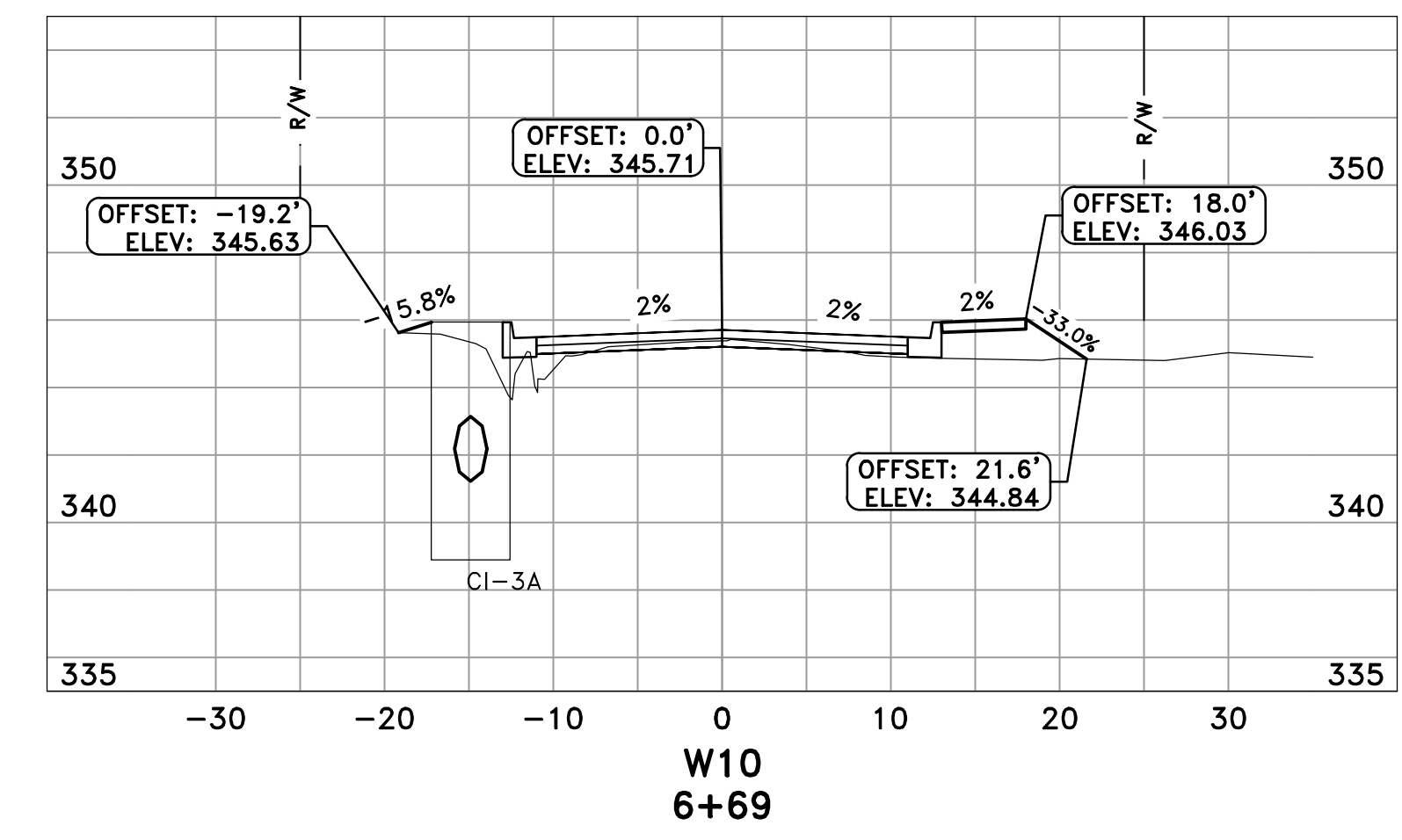
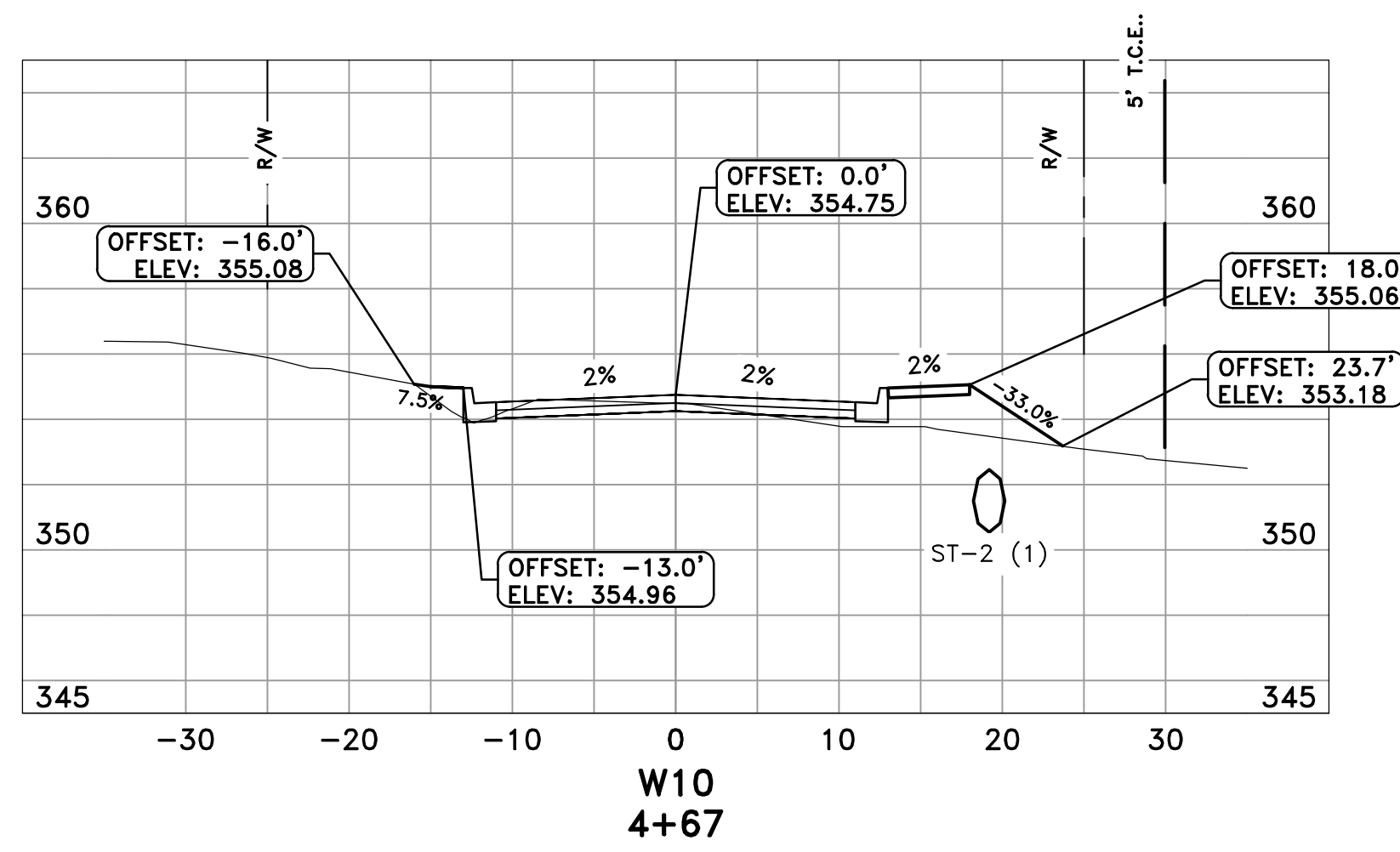
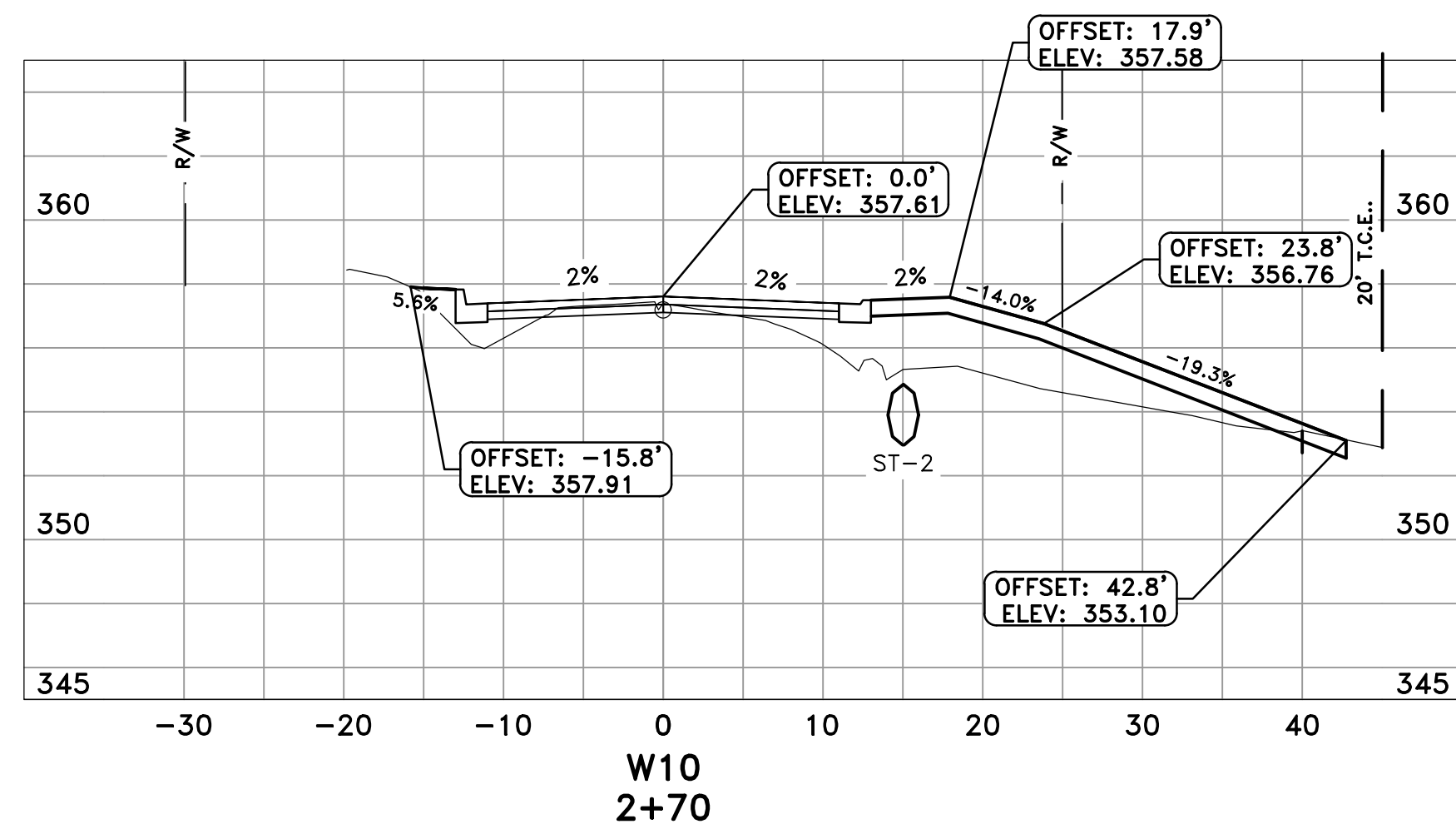
REVISIONS	DATE

**CITY OF LITTLE ROCK, ARKANSAS**  
**W-10th STREET RECONSTRUCTION**  
**PLAN & PROFILE - STA 6+50 TO 11+90**  
**90% SUBMITTAL**

**DEPARTMENT OF PUBLIC WORKS**  
**CIVIL ENGINEERING**  
**701 W. MARKHAM**  
**LITTLE ROCK, ARKANSAS 72201**

**PRELIMINARY**

**DRAWN BY**  
**ATV**  
**DESIGNED**  
**NHC & ATV**  
**CHECKED**  
**VJW**  
**DATE**  
**07-03-2019**  
**SCALE**  
**1"=20' (22X34)**  
**PROJECT NO.**  
**02-17-ST-82**  
**SHEET NO.**  
**C5**



REVISIONS	DATE

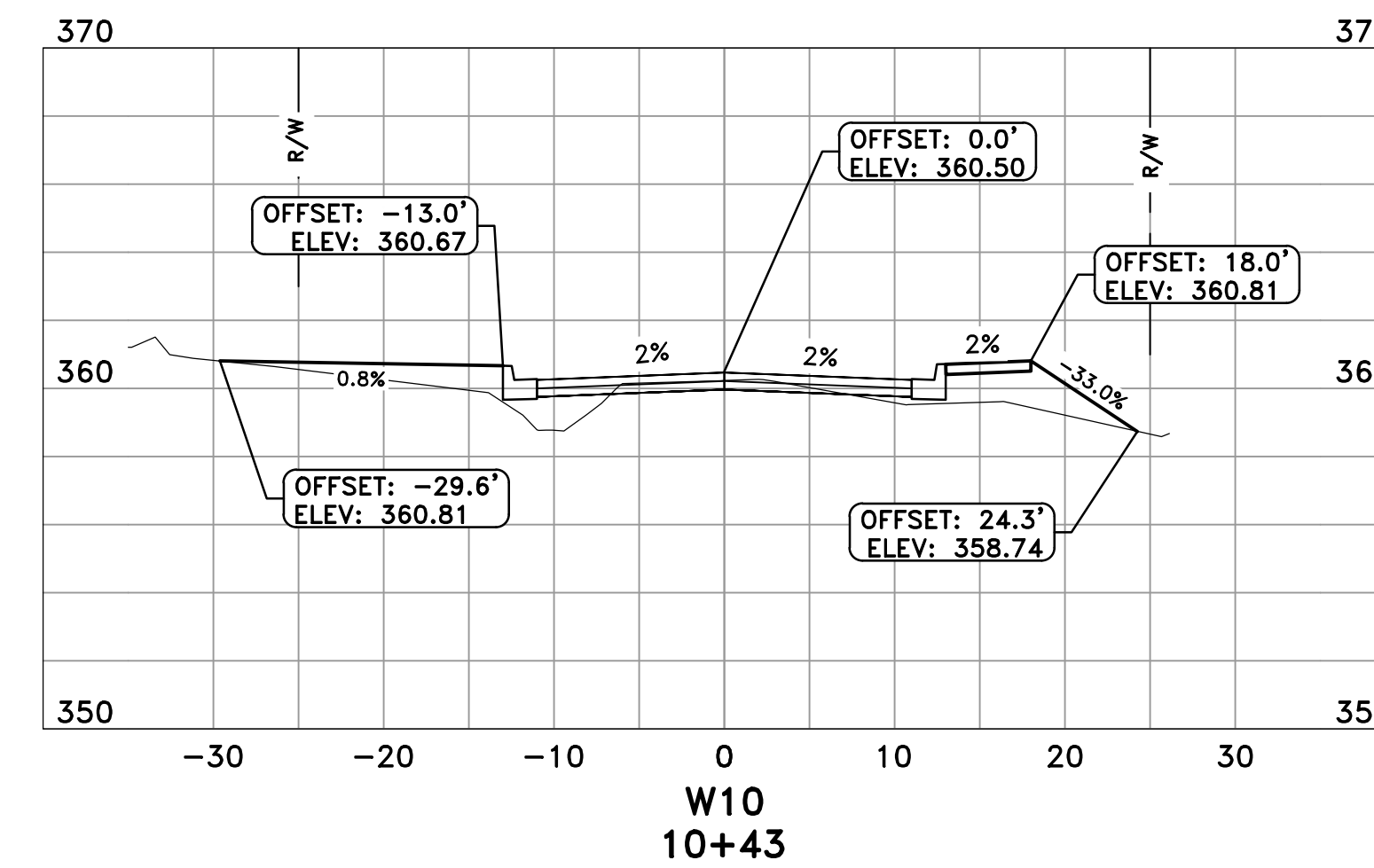
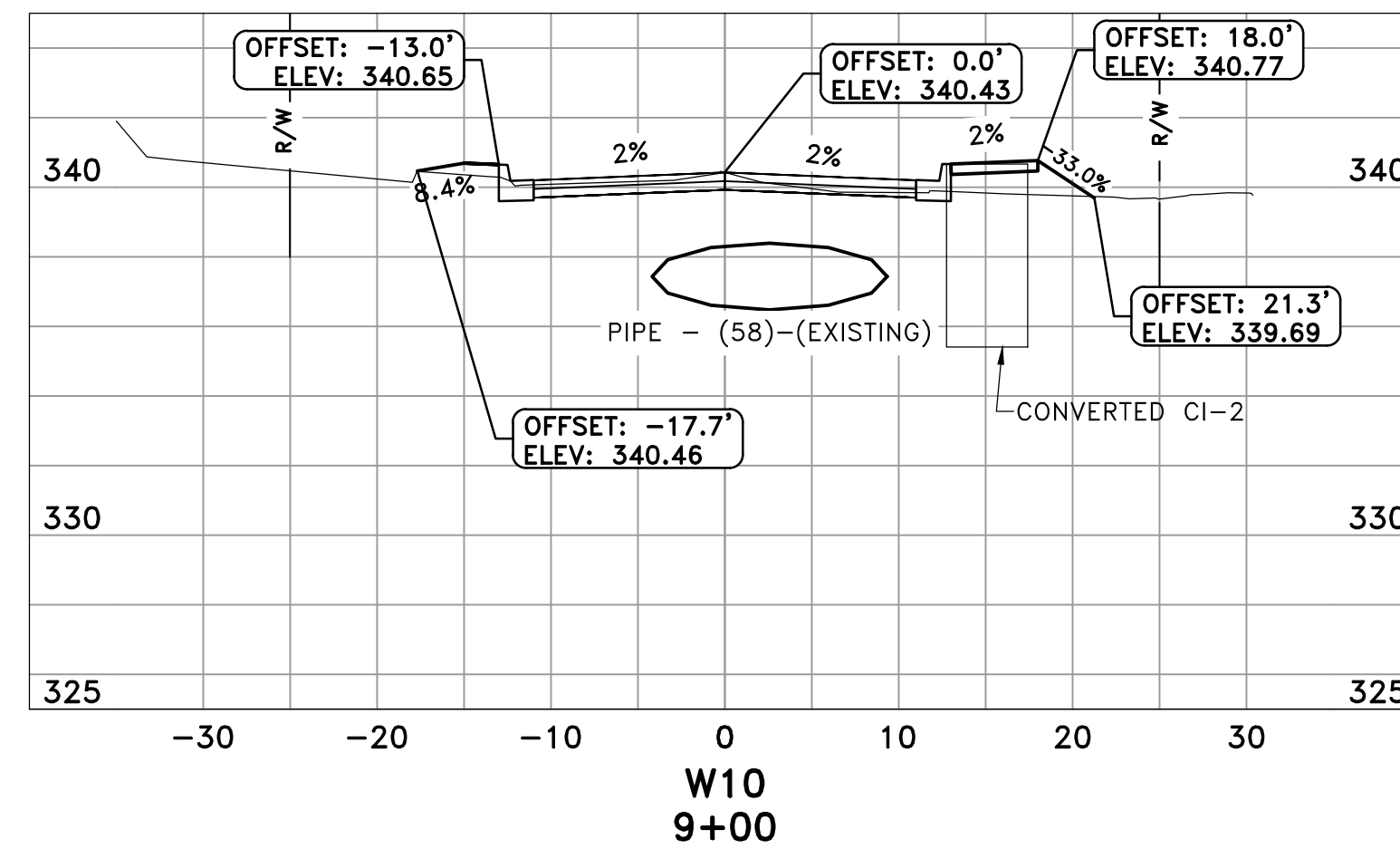
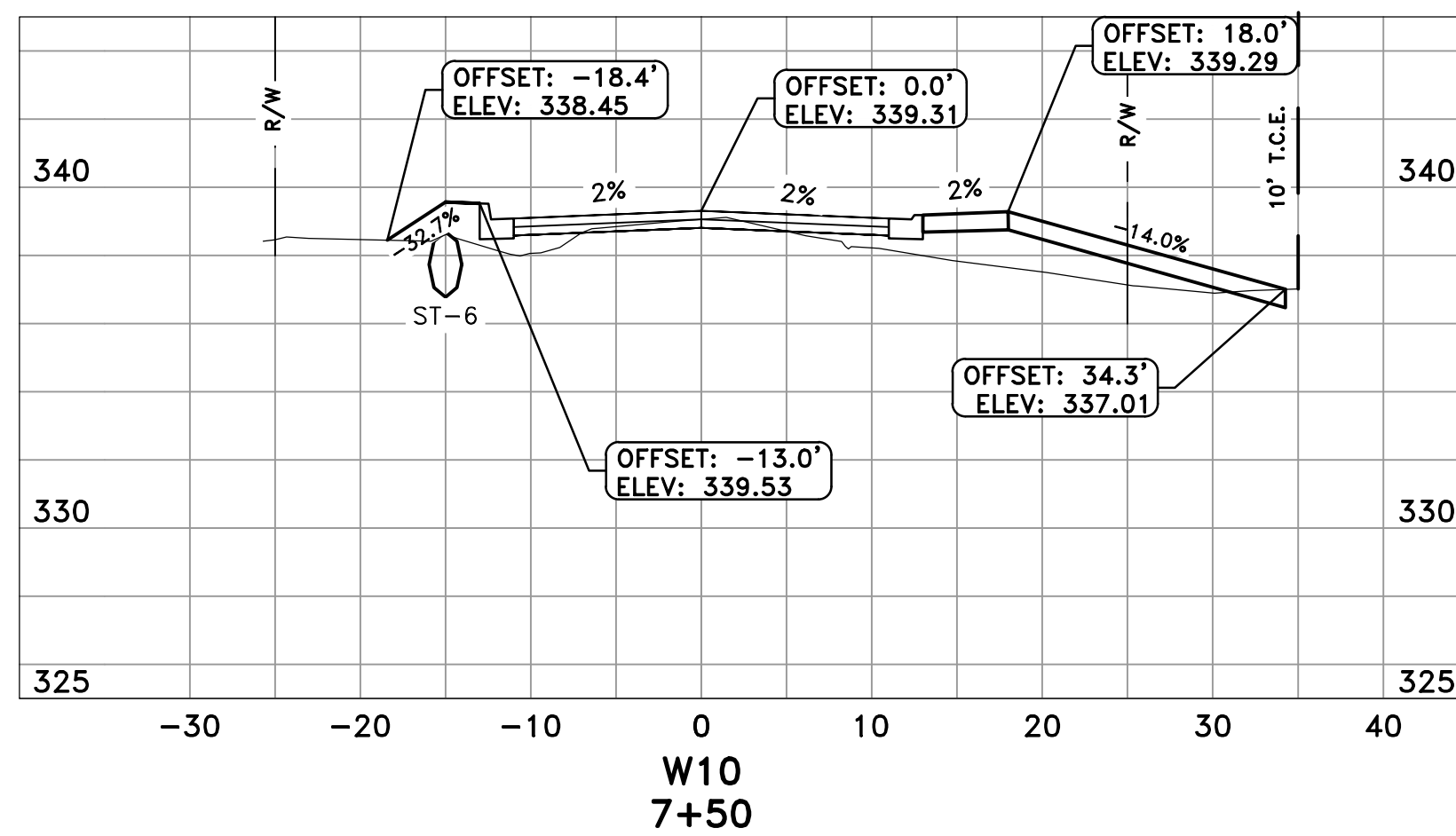
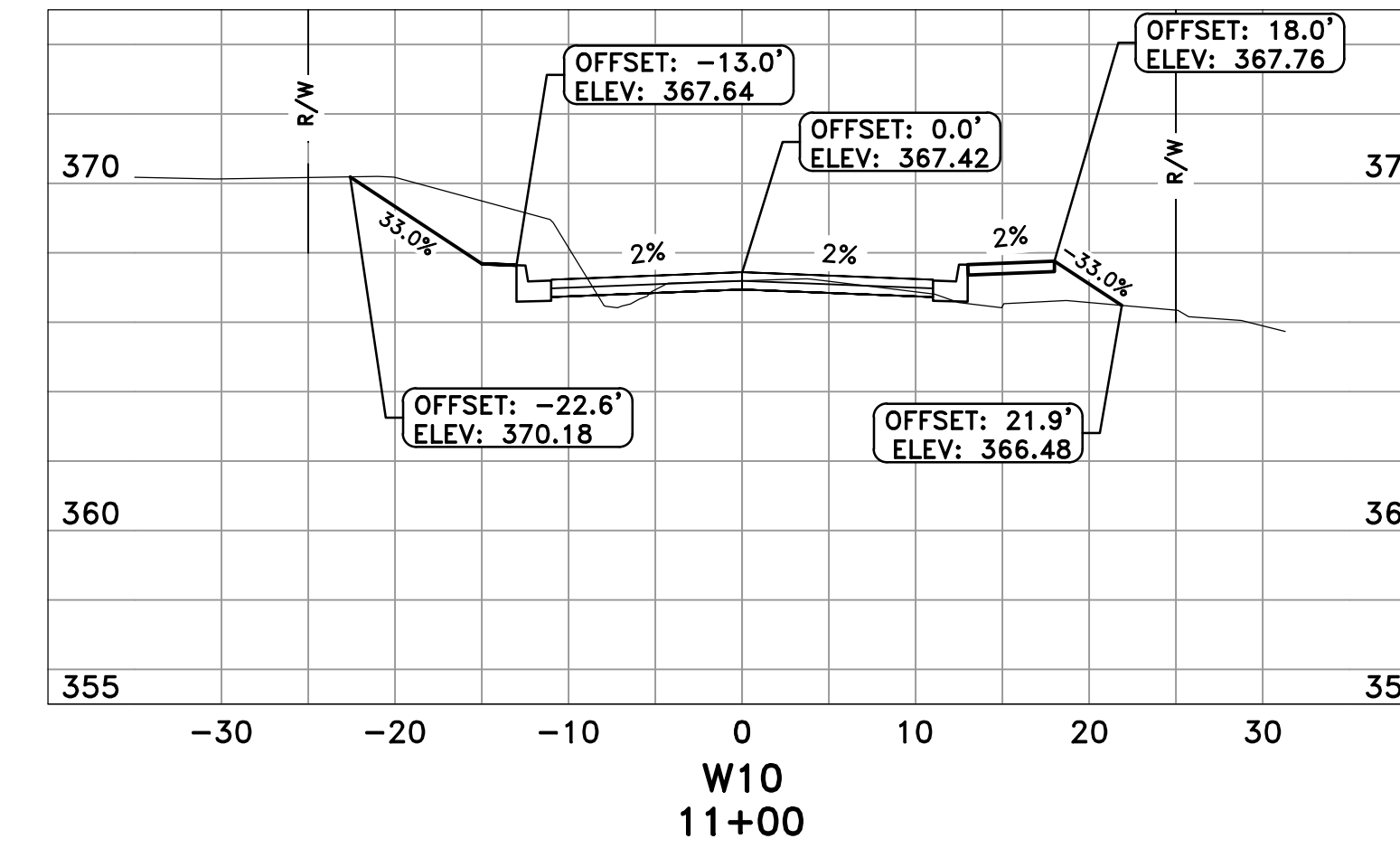
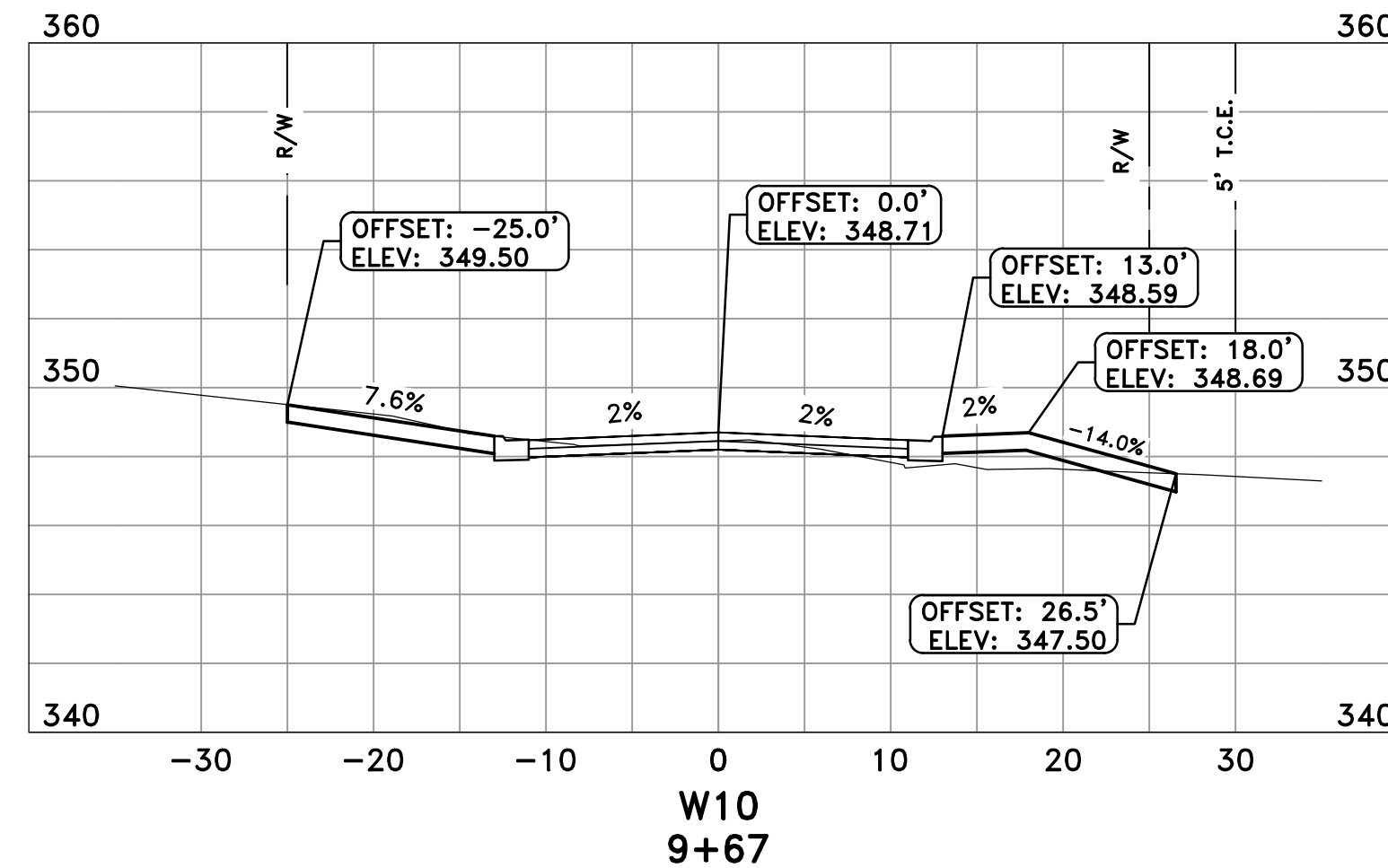
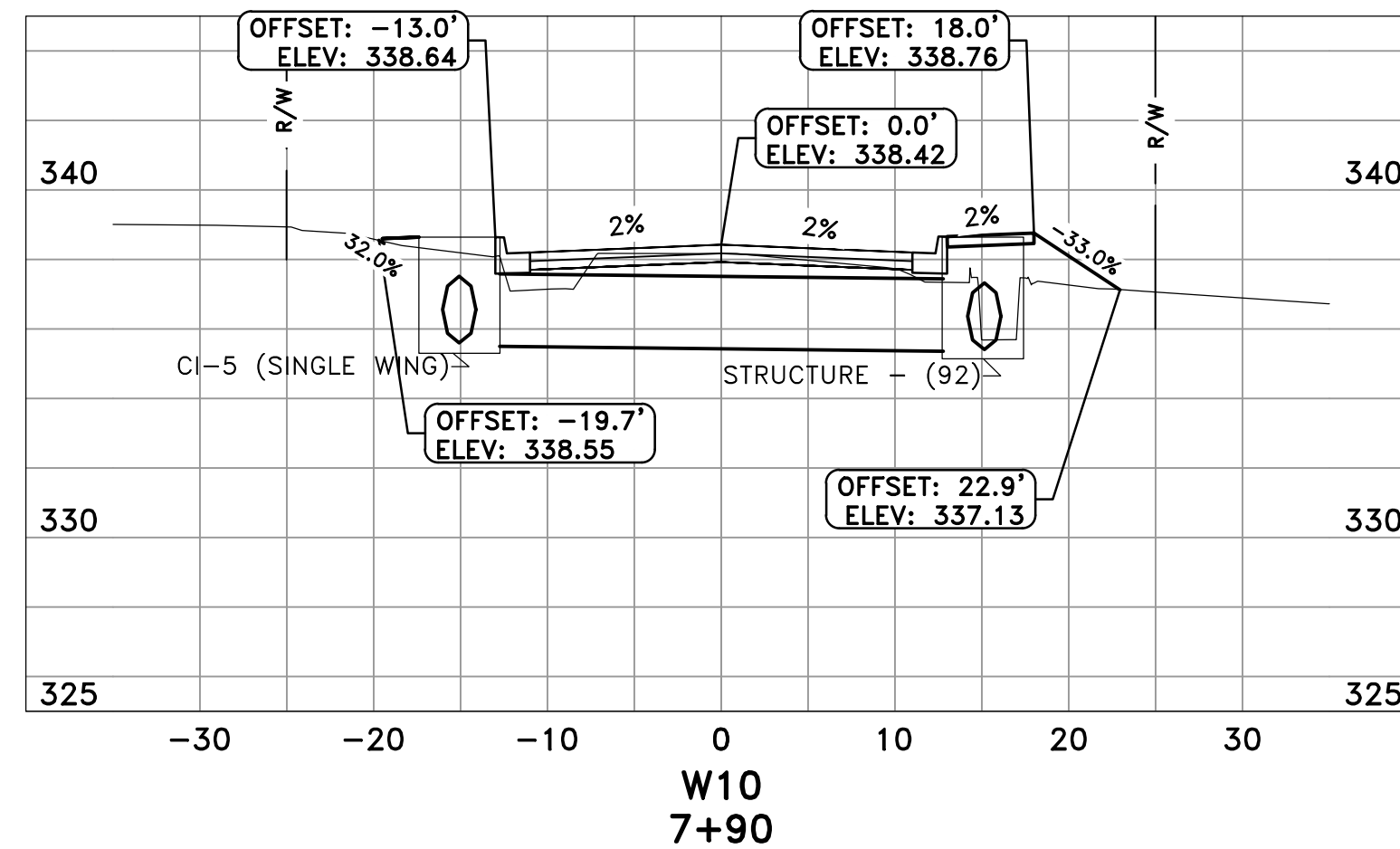
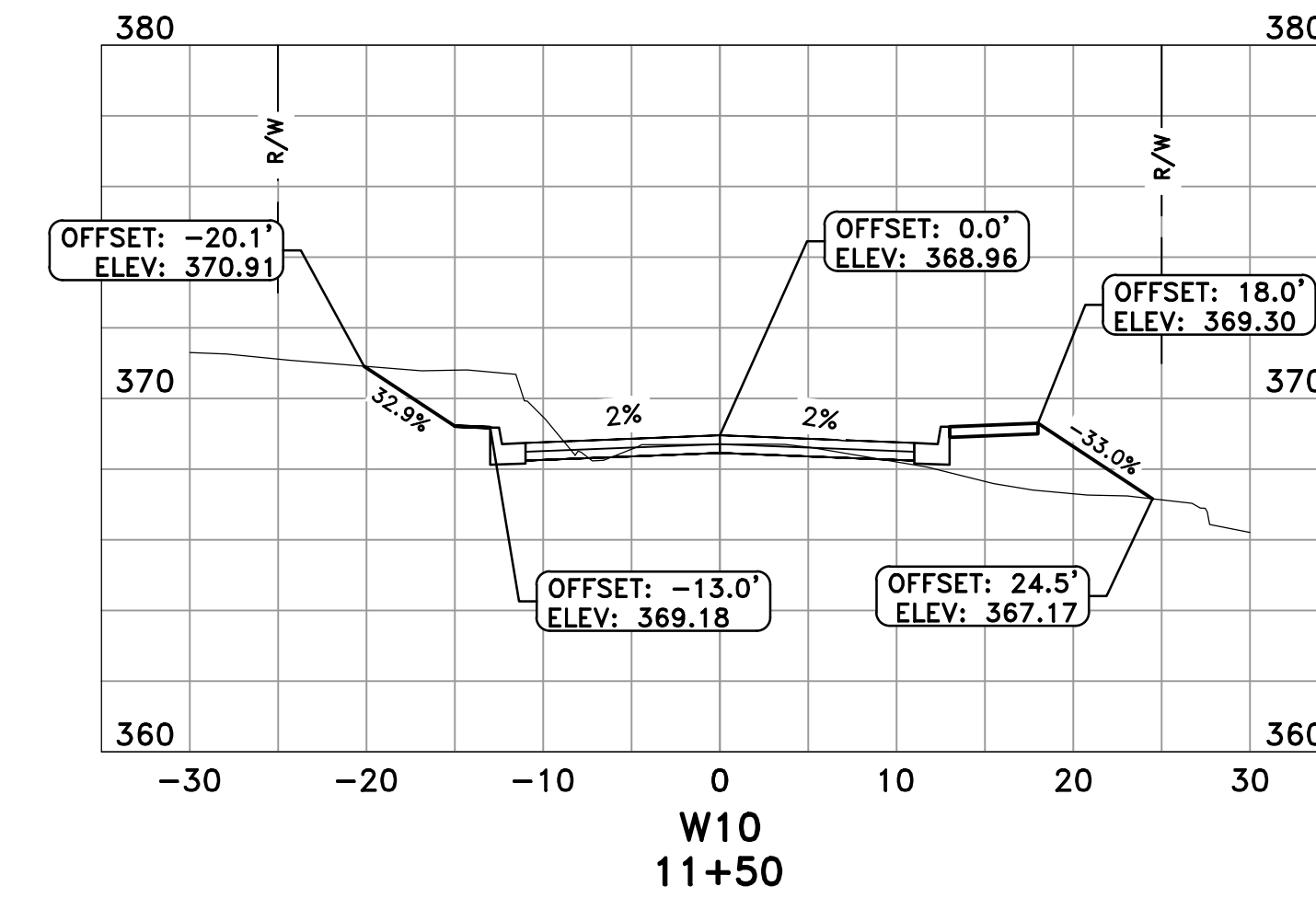
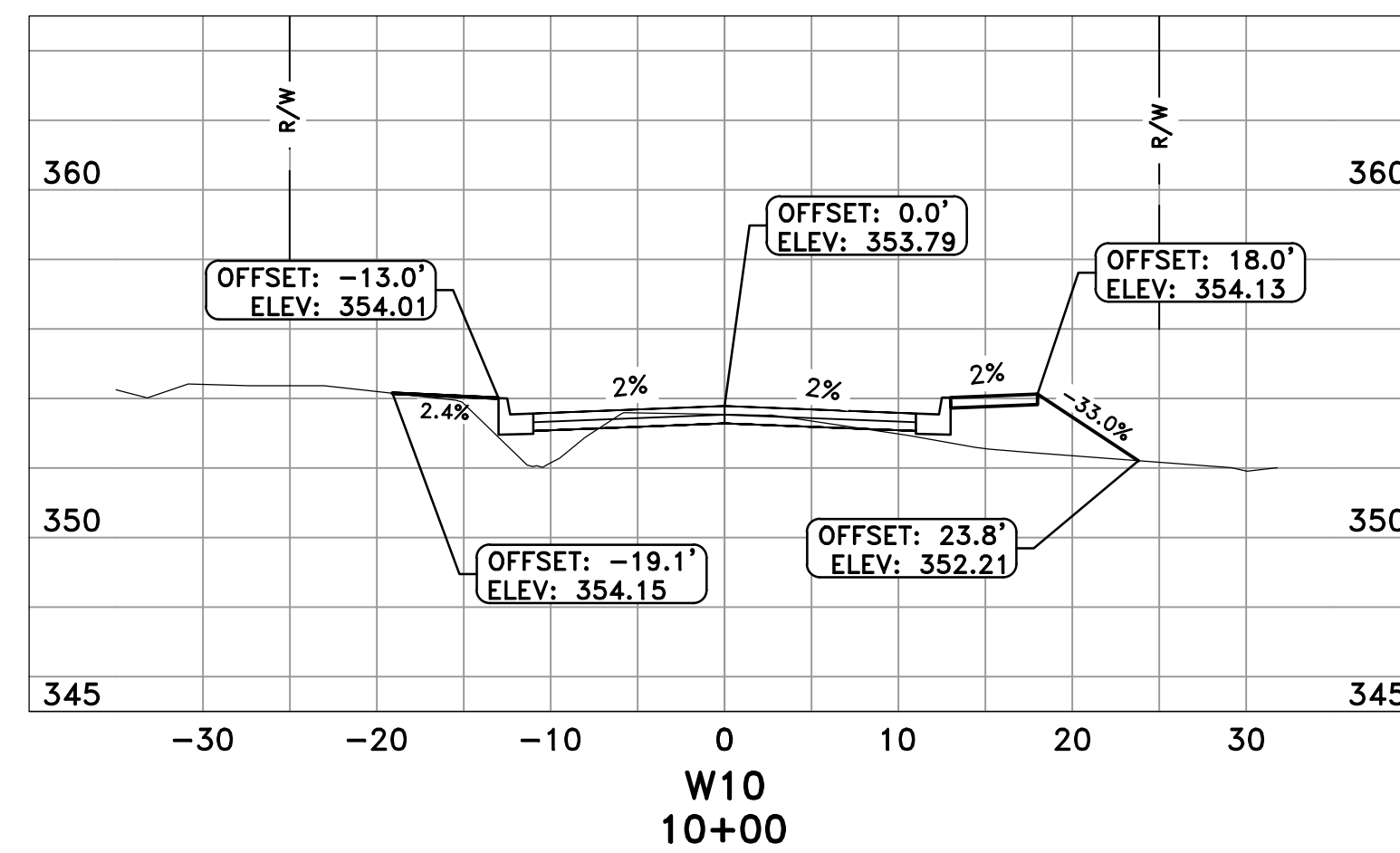
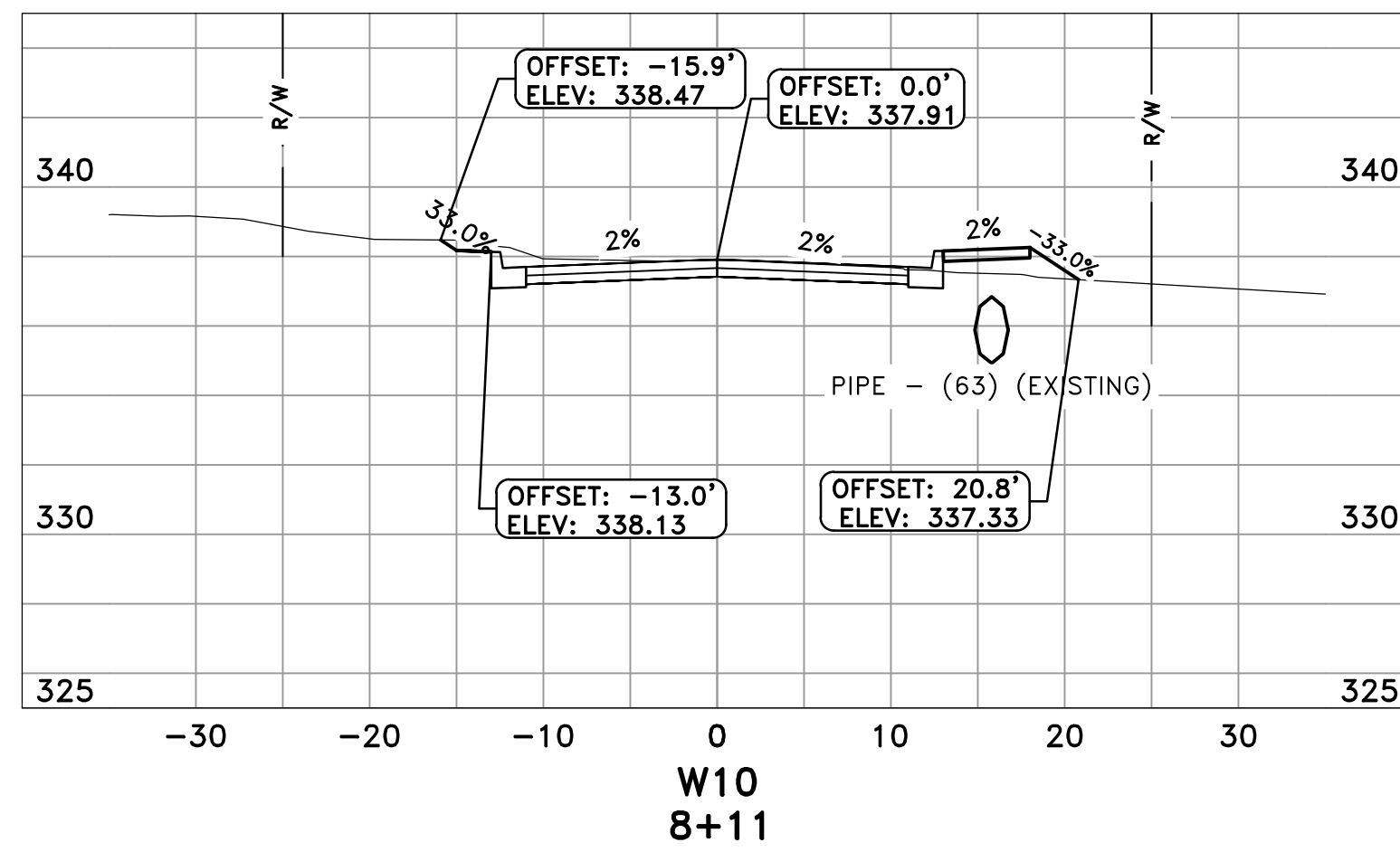
CITY OF LITTLE ROCK, ARKANSAS  
 W-10th STREET RECONSTRUCTION  
 CROSS SECTIONS - I  
 90% SUBMITTAL

DEPARTMENT OF PUBLIC WORKS  
 CIVIL ENGINEERING  
 701 W. MARKHAM  
 LITTLE ROCK, ARKANSAS 72201



PRELIMINARY

DRAWN BY  
 ATV  
 DESIGNED  
 NHC & VJW  
 CHECKED  
 VJW  
 DATE  
 07-03-2019  
 SCALE  
 1"=10' HZ : 1"=5' VT  
 PROJECT NO.  
 02-17-ST-82  
 SHEET NO.  
 C6



REVISIONS	DATE

CITY OF LITTLE ROCK, ARKANSAS  
W-10th STREET RECONSTRUCTION  
CROSS SECTIONS - II  
90% SUBMITTAL

DEPARTMENT OF PUBLIC WORKS  
CIVIL ENGINEERING  
701 W. MARKHAM  
LITTLE ROCK, ARKANSAS 72201



PRELIMINARY

DRAWN BY  
ATV  
DESIGNED  
NHC & VJW  
CHECKED  
VJW  
DATE  
07-03-2019  
SCALE  
1"=10' HZ : 1"=5' VT  
PROJECT NO.  
02-17-ST-82  
SHEET NO.  
C7



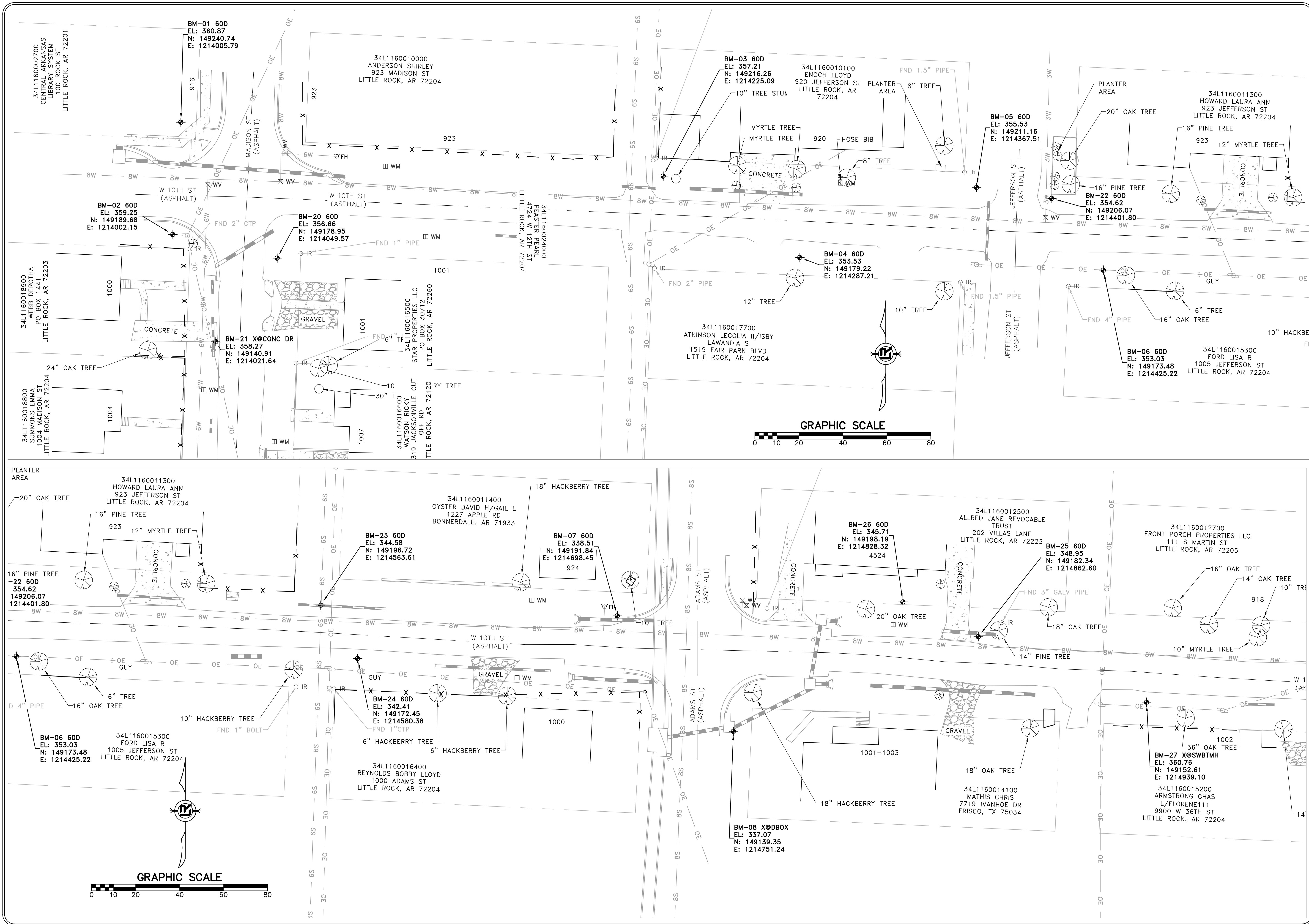
REVISIONS	DATE

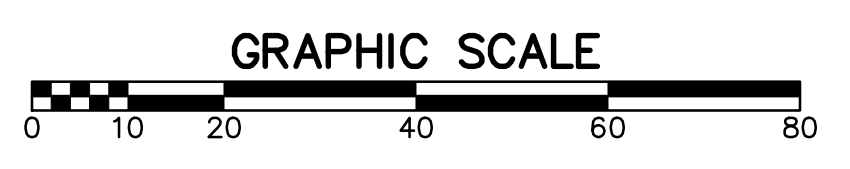
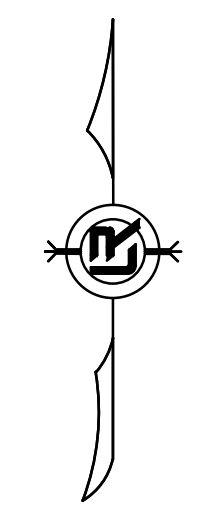
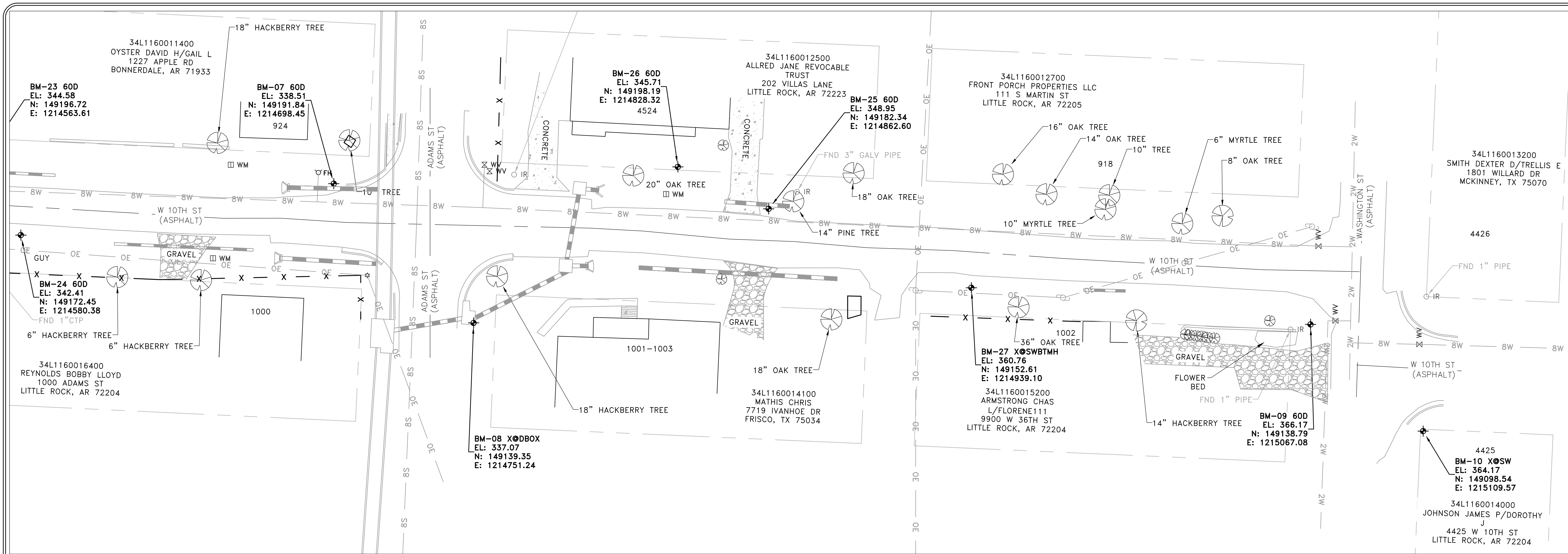
**CITY OF LITTLE ROCK, ARKANSAS**  
**W-10TH STREET RECONSTRUCTION**  
**SURVEY CONTROL PLAN - I**  
**90% SUBMITTAL**

**DEPARTMENT OF PUBLIC WORKS**  
**CIVIL ENGINEERING**  
**701 W. MARKHAM**  
**LITTLE ROCK, ARKANSAS 72201**

**PRELIMINARY**

**DRAWN BY**  
**GPW**  
**DESIGNED**  
**VJW & NHC**  
**CHECKED**  
**VJW**  
**DATE**  
**07-03-2019**  
**SCALE**  
**1"=20' (22X34)**  
**PROJECT NO.**  
**02-17-ST-82**  
**SHEET NO.**  
**C8**





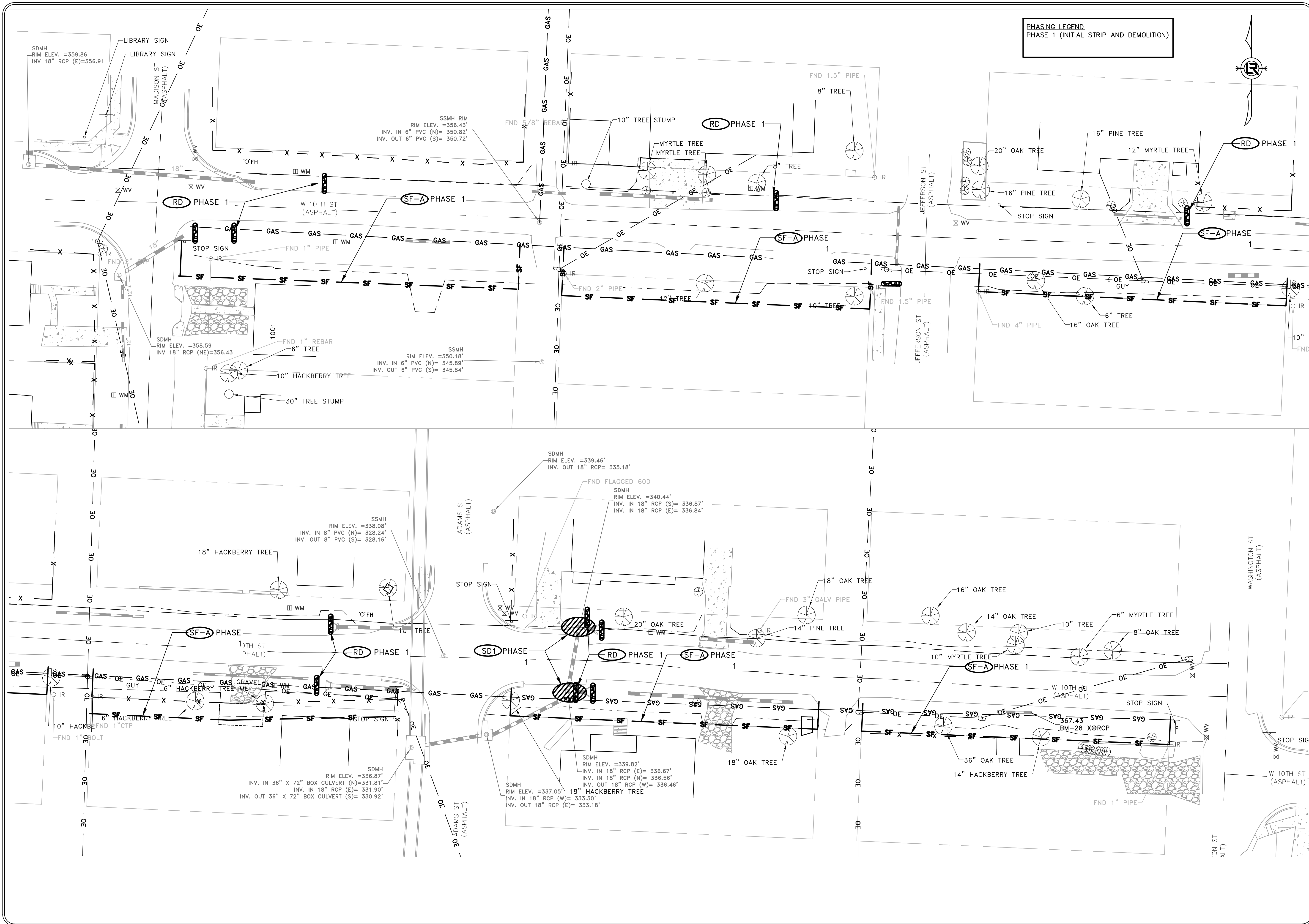
REVISIONS	DATE

**CITY OF LITTLE ROCK, ARKANSAS**  
**W-10TH STREET RECONSTRUCTION**  
 SURVEY CONTROL PLAN - II  
 90% SUBMITTAL

DEPARTMENT OF PUBLIC WORKS  
 CIVIL ENGINEERING  
 701 W. MARKHAM  
 LITTLE ROCK, ARKANSAS 72201

**PRELIMINARY**

DRAWN BY  
 GPW  
 DESIGNED  
 VJW & NHC  
 CHECKED  
 VJW  
 DATE  
 07-03-2019  
 SCALE  
 1"=20' (22X34)  
 PROJECT NO.  
 02-17-ST-82  
 SHEET NO.  
 C9



PHASING LEGEND  
 PHASE 1 (INITIAL STRIP AND DEMOLITION)

REVISIONS	DATE

CITY OF LITTLE ROCK, ARKANSAS  
 W-10th STREET RECONSTRUCTION  
 EROSION CONTROL PLAN- PHASE I  
 90% REVIEW SET

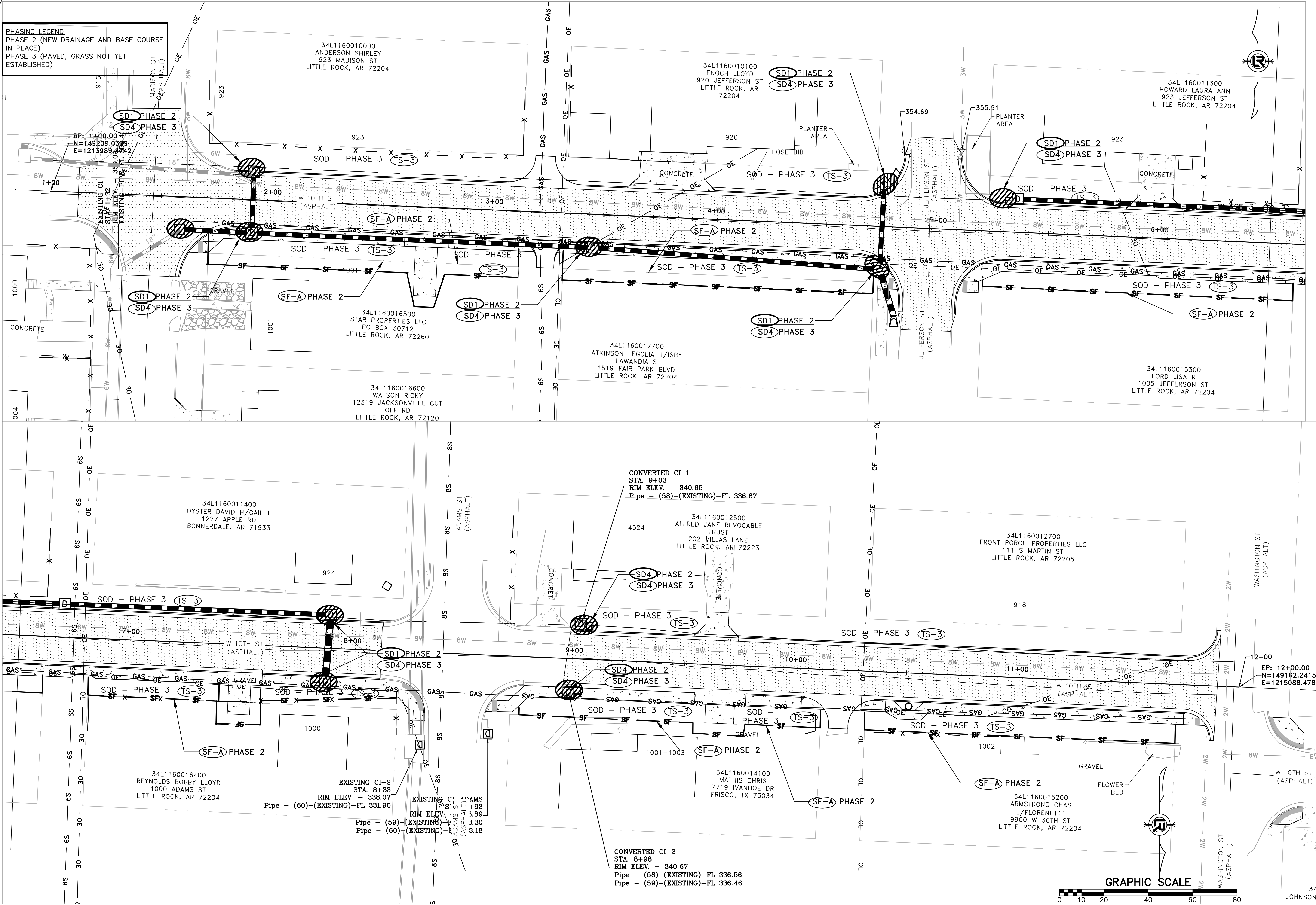
DEPARTMENT OF PUBLIC WORKS  
 CIVIL ENGINEERING  
 701 W. MARKHAM  
 LITTLE ROCK, ARKANSAS 72201

PRELIMINARY

DRAWN BY  
 ATV  
 DESIGNED  
 NHC & VJW  
 CHECKED  
 VJW  
 DATE  
 07-03-2019  
 SCALE  
 1"=20' (22X34)  
 PROJECT NO.  
 02-17-ST-82  
 SHEET NO.  
 C10



**PHASING LEGEND**  
 PHASE 2 (NEW DRAINAGE AND BASE COURSE IN PLACE)  
 PHASE 3 (PAVED, GRASS NOT YET ESTABLISHED)



REVISIONS	DATE

**CITY OF LITTLE ROCK, ARKANSAS**  
**W-10th STREET RECONSTRUCTION**  
**EROSION CONTROL PLAN- PHASE II & III**  
**90% REVIEW SET**

**DEPARTMENT OF PUBLIC WORKS**  
**CIVIL ENGINEERING**  
 701 W. MARKHAM  
 LITTLE ROCK, ARKANSAS 72201

**PRELIMINARY**

**DRAWN BY**  
 ATV  
**DESIGNED**  
 NHC & VJW  
**CHECKED**  
 VJW  
**DATE**  
 07-03-2019  
**SCALE**  
 1"=20' (22X34)  
**PROJECT NO.**  
 02-17-ST-82  
**SHEET NO.**  
 C11



JOHNSON



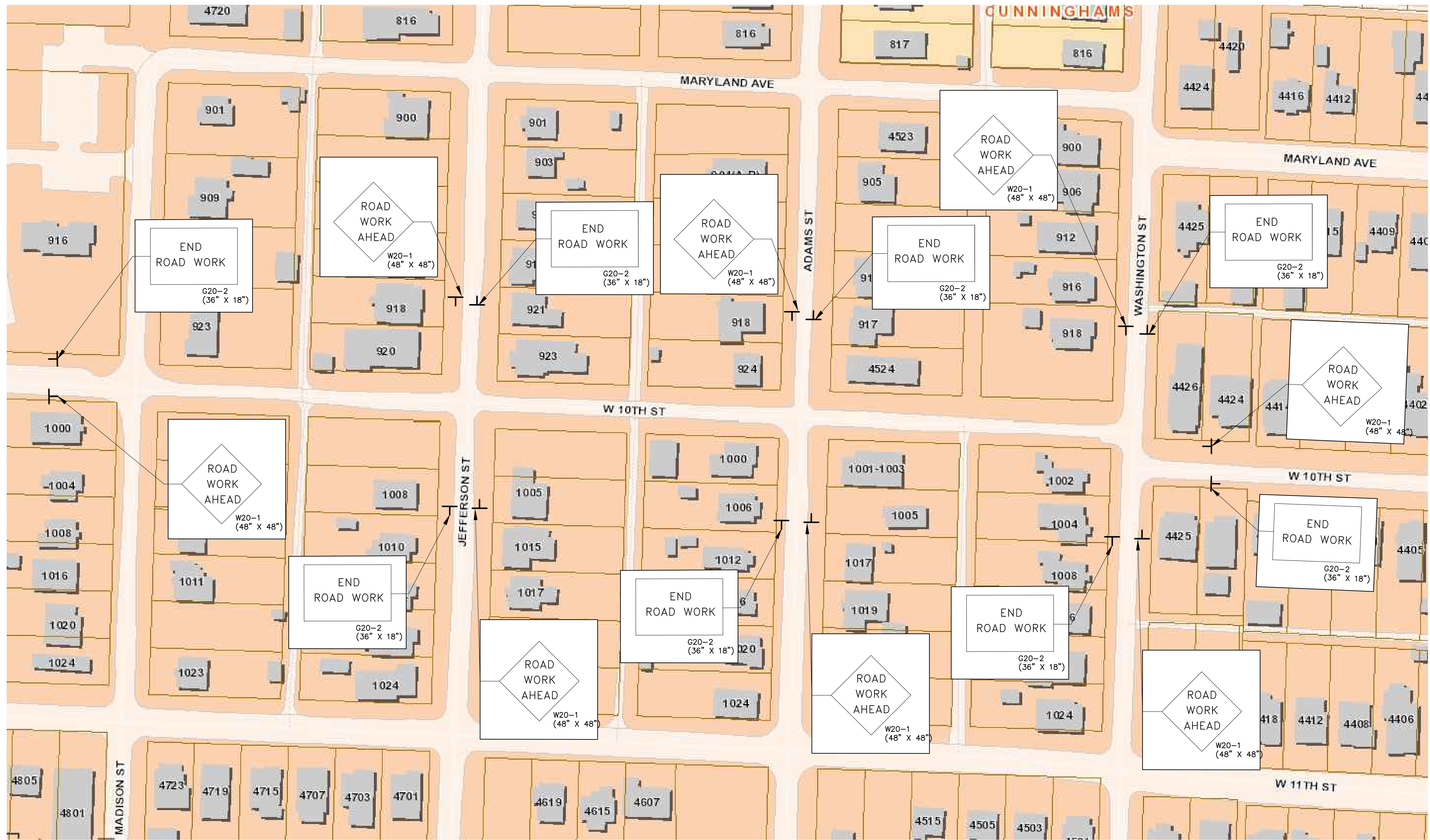
REVISIONS	DATE

CITY OF LITTLE ROCK, ARKANSAS  
W 10TH ST RECONSTRUCTION  
MAINTENANCE OF TRAFFIC PLAN  
90% REVIEW SET

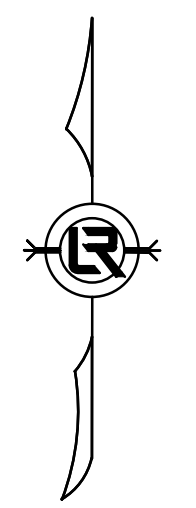
DEPARTMENT OF PUBLIC WORKS  
CIVIL ENGINEERING  
701 W. MARKHAM  
LITTLE ROCK, ARKANSAS 72201

PRELIMINARY

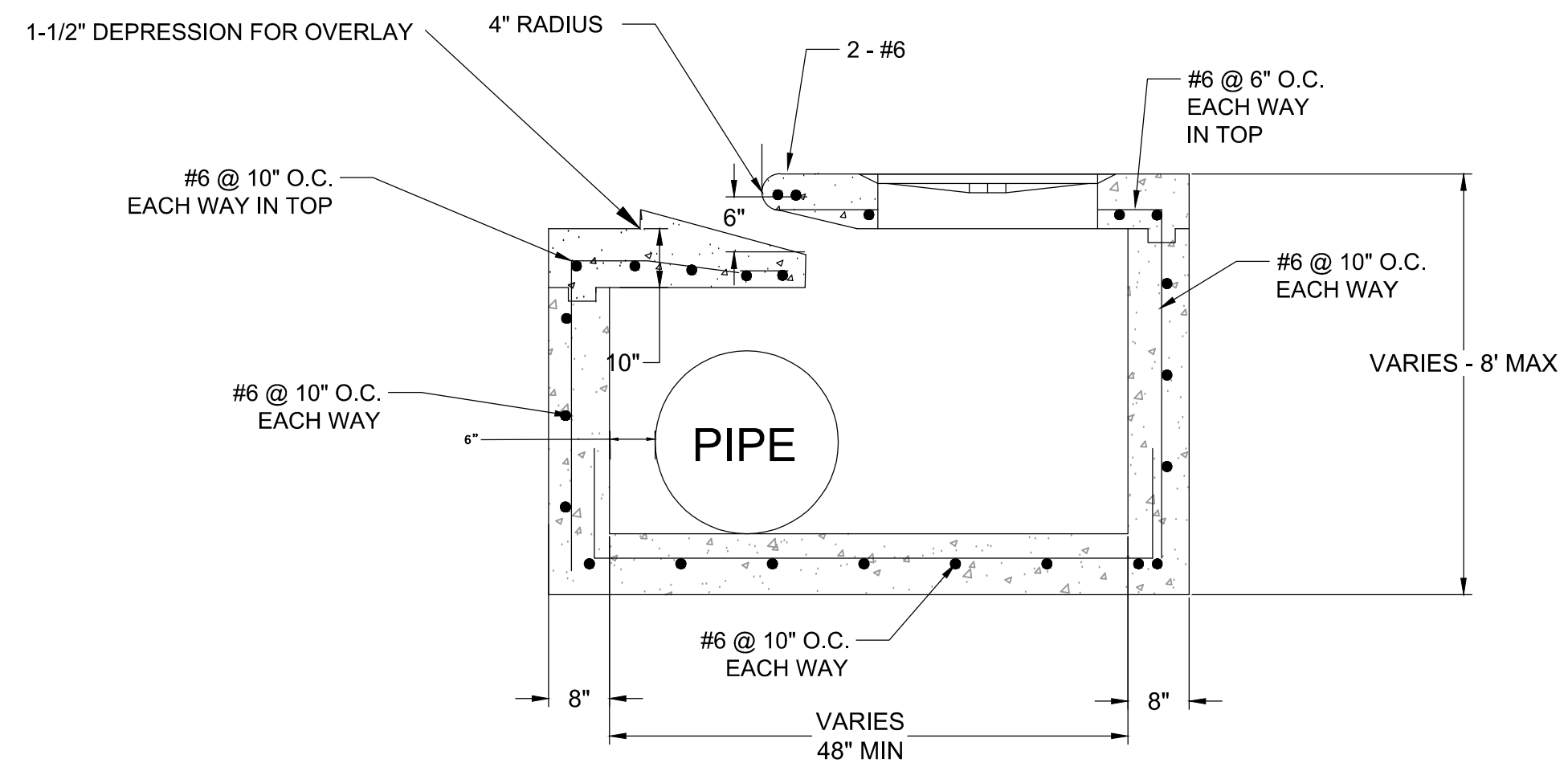
DRAWN BY  
ATV  
DESIGNED  
NHC  
CHECKED  
VJW  
DATE  
07-03-2019  
SCALE  
N.T.S.  
PROJECT NO.  
02-17-ST-82  
SHEET NO.  
C12



- MAINTENANCE OF TRAFFIC NOTES:  
WITHIN CONSTRUCTION LIMITS CONTRACTOR SHALL:
1. MAINTAIN CONTINUOUS VEHICULAR ACCESS TO ALL RESIDENCES.
  2. PROVIDE, INSTALL, AND MAINTAIN (INCLUDING RELOCATION AS NEEDED) ALL TRAFFIC CONTROL DEVICES.



REVISIONS	DATE



- NOTES:
1. SEE PW1-B FOR THROAT EXTENSION DETAILS.
  2. SEE PW-13 FOR MANHOLE FRAME & COVER.
  3. SEE PW-9 FOR THROAT OPENING DETAIL.
  4. SEE PW-11 FOR WALL KEY DETAIL.
  5. ALL REINFORCING SHALL BE PLACED 1-1/2" CLEAR TO THE INSIDE OF THE STRUCTURE.

## OFFSET INLET - TYPE SPECIAL

SCALE: NONE

CITY OF LITTLE ROCK, ARKANSAS  
W-10th STREET RECONSTRUCTION

DRAINAGE DETAIL  
90% REVIEW SET

DEPARTMENT OF PUBLIC WORKS  
CIVIL ENGINEERING  
701 W. MARKHAM  
LITTLE ROCK, ARKANSAS 72201



PRELIMINARY

DRAWN BY  
ATV  
DESIGNED  
NHC & VJW  
CHECKED  
VJW  
DATE  
07-03-2019  
SCALE  
N/A  
PROJECT NO.  
02-17-ST-82  
SHEET NO.  
C13