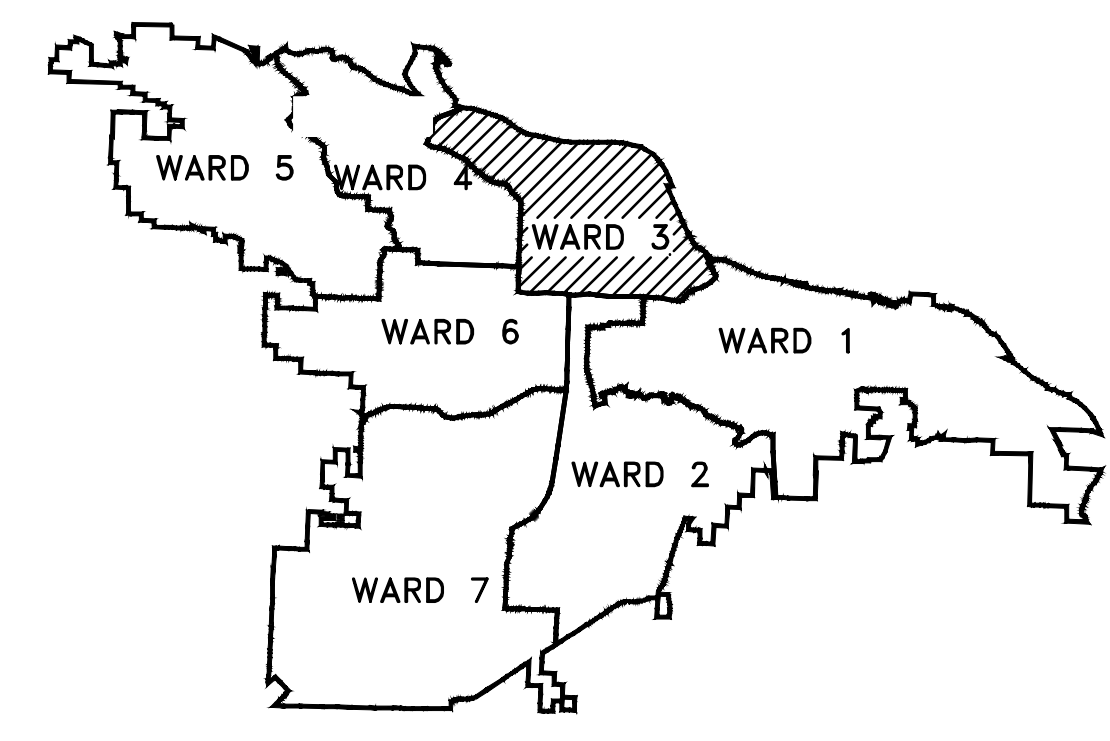
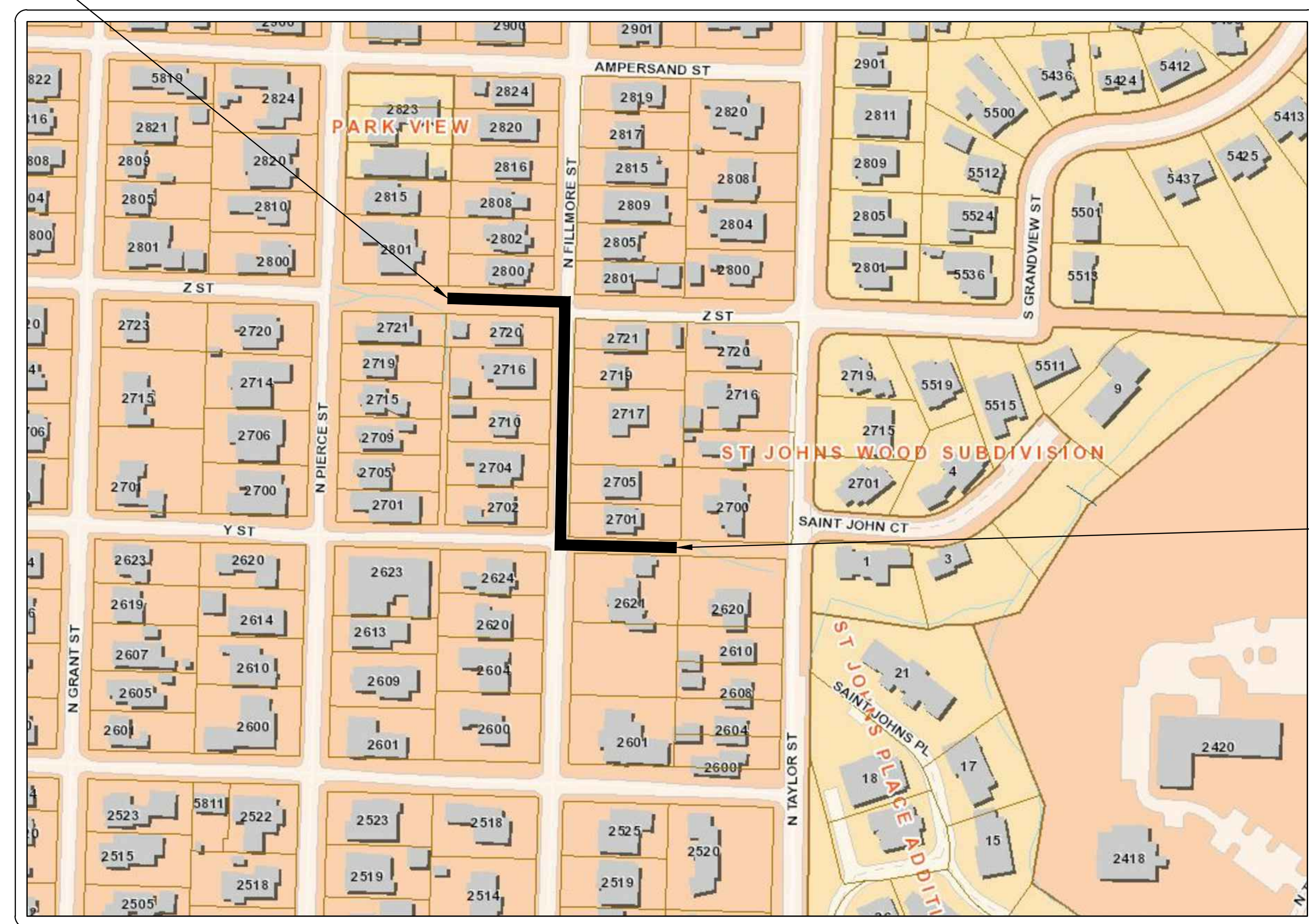
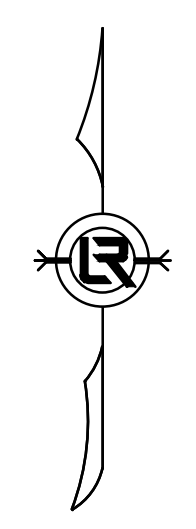


60% SUBMITTAL

CLR PROJECT 03-16-DR-120 FILLMORE STREET DRAINAGE IMPROVEMENTS (Z STREET TO Y STREET)



PROJECT END
STATION 17+06



Sheet List Table	
Sheet Number	Sheet Title
C1	COVER SHEET
C2	LEGEND, QUANTITIES AND DETAILS
C3	P&P SHEET 1
C4	P&P SHEET 2
C5	SUPPLEMENTAL GRADING DETAILS

PROJECT START
STATION 10+00



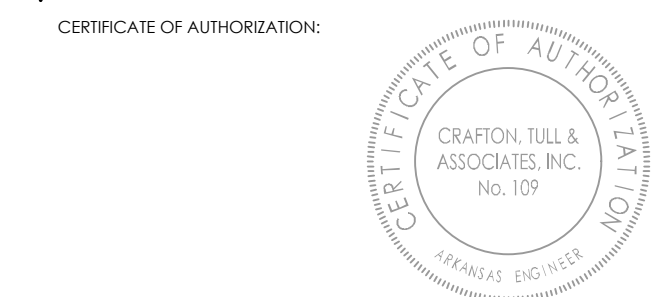
**2019-2021
BOND PROGRAM**

LOCATION

DEPARTMENT OF PUBLIC WORKS
CIVIL ENGINEERING
701 WEST MARKHAM STREET
LITTLE ROCK, ARKANSAS 72201



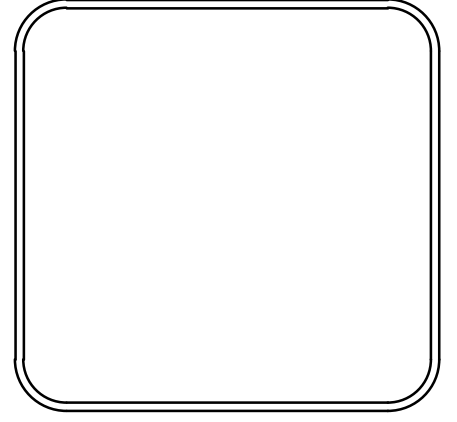
10825 Financial Center Parkway, Suite 300
Little Rock, Arkansas 72211
Crafton Tull
engineering | surveying
501.664.3245 | 501.664.6704 | www.craftontull.com



REVISIONS	DATE

CITY OF LITTLE ROCK, ARKANSAS
FILLMORE STREET DRAINAGE

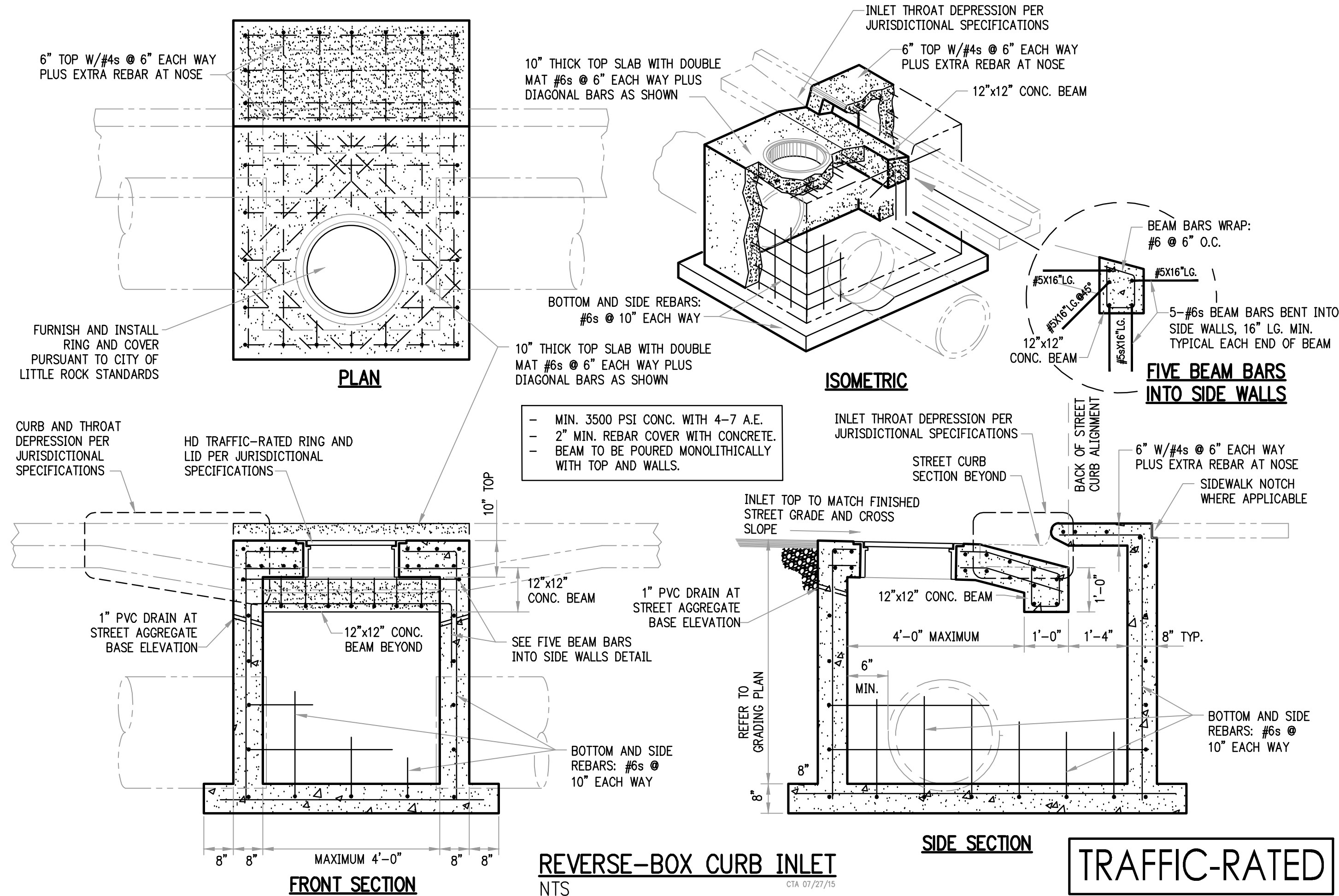
DEPARTMENT OF PUBLIC WORKS
CIVIL ENGINEERING
701 W. MARKHAM
LITTLE ROCK, ARKANSAS 72201



DRAWN BY TH
DESIGNED MB
CHECKED BAP
DATE 04-16-2019
SCALE H: 1"=20' V: 1"=5'
PROJECT NO. 13-16-DR-120
SHEET NO. C1

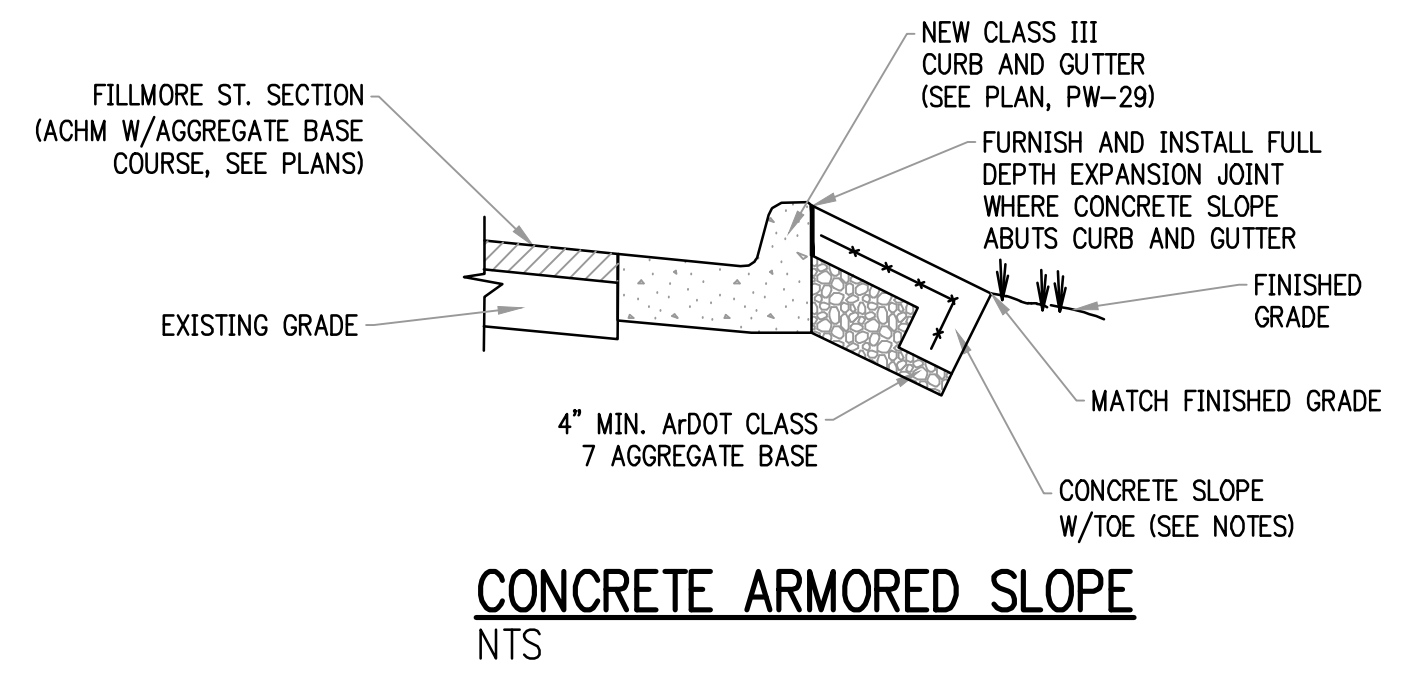
REVISIONS	DATE

OPINION OF PROBABLE CONSTRUCTION COSTS - 60%			
CLR PROJECT # 03-16-DR-120			
FILLMORE STREET ROAD & DRAINAGE IMPROVEMENTS			
6/19/2019			
2.01	SITE PREPARATION	1	L.S.
3.01	UNCLASSIFIED EXCAVATION	60	C.Y.
3.40	TOPSOIL	115	C.Y.
4.01	AGGREGATE BASE COURSE	125	TON
5.01	TACK COAT	49	GAL
6.01	ACHM SURFACE COURSE	107	TON
7.06	CONCRETE DRIVEWAY (6" THICK), STANDARD FINISH	1520	S.F.
7.19	CONCRETE (8" THICK), STREET REPAIR	63	C.Y.
8.03	CONCRETE CURB AND GUTTER (CLASS 3)	326	L.F.
8.16A	DUMPED RIPRAP (GROUTED)	23	C.Y.
10.01	JUNCTION BOX	1	EA.
10.08	CURB INLET - 8" BOX	6	EA.
10.07	WING 3' EXTENSION	6	EA.
11.06	REINFORCED CONCRETE HEADWALL	7	C.Y.
13.15C	STORM DRAIN PIPE, 15" SIDE DRAIN	8	L.F.
13.15C	STORM DRAIN PIPE, 15" CROSS DRAIN	26	L.F.
13.18C	STORM DRAIN PIPE, 18" CROSS DRAIN	25	L.F.
13.36C	STORM DRAIN PIPE, 36" SIDE DRAIN	385	L.F.
13.42C	STORM DRAIN PIPE, 42" SIDE DRAIN	260	L.F.
14.01	SOLID SODDING (BERMUDA)	674	S.Y.
16.01	MAINTENANCE OF TRAFFIC	1	L.S.
18.01	REMOVE AND REPLACE FENCE	10	L.F.
19.01	CLEAN UP	1	L.S.
24.02	CHECK DAM (CD)	5	C.Y.
24.06	SEDIMENT BARRIER, SILT FENCE (SD1)	7	EA.
24.11	SILT FENCE - TYPE A (SFA)	382	L.F.
26.10	TRENCH & EXCAVATION SAFETY	1	L.S.
632.02	CONCRETE STABILIZED SLOPE	10	S.Y.



EXISTING	PROPOSED		
IRON ROD	○ IR	PROPOSED CONTOUR	○ 25
PK NAIL	○ PK	PROPOSED SPOT ELEVATION	○ 25.00
R.R. SPIKE	○ RR(Sp)	PROPOSED SPOT CURB ELEVATION	○ 25.50
CONC. MONUMENT	□ CM	STORM SEWER - PIPE	▬
WATER VALVE	⊗ WV	STORM SEWER - MITERED END SECTION	▬
WATER METER	□ WM	STORM SEWER - GRATE INLET	▬
FIRE HYDRANT	⊕ FH	STORM SEWER - JUNCTION BOX	○ D
GAS METER	⊕ GM	STORM SEWER - FLARED END SECTION	○ D
GAS VALVE	⊗ GV	STORM SEWER - HEADWALL	▬
CLEAN-OUT	○ CO	STORM SEWER - SINGLE WING	▬
GUARD POST (BOLLARD)	● GP	STORM SEWER - DOUBLE WING	▬
SIGN POST	⊕	STORM SEWER - AREA INLET	▬
BENCHMARK	⊕	GRADE BREAK LINE	▬
STORM SEWER MANHOLE	○ D	HIGH POINT	HP
SANITARY SEWER MANHOLE	○ S	LOW POINT	LP
TELEPHONE MANHOLE	○ T	CUT LINE	▬
ELECTRIC MANHOLE	○ E	FILL LINE	▬
TELEPHONE BOX	□	SANITARY SEWER PIPE	▬
ELECTRIC BOX	□	SANITARY SEWER MANHOLE	○ S
CABLE BOX	□	PROPOSED CURB	▬
UTILITY POLE	⊕	PROPOSED CONCRETE	▬
GUY WIRE	⊕	CONSTRUCTION - ENTRANCE/EXIT	○ CD
LIGHT POLE	⊕	CHECK DAM	○ CD
POST OR POLE (TYPE AS NOTED)	⊕	DIVERSION BERM	○ DI
MAILBOX	⊕	DOWNDRAIN STRUCTURE - TEMPORARY	○ DN
DECIDUOUS TREE	⊕	ROCK DAM	○ RD
BUSH	⊕	SEDIMENT BARRIER - SILT FENCE	○ SD1
PROPERTY LINE	▬	SEDIMENT BARRIER - GRAVEL RING	○ SD2
SETBACK LINE	▬	SEDIMENT BARRIER - BLOCK & GRAVEL	○ SD3
EASEMENT LINE	▬	SEDIMENT BARRIER - BLOCK	○ SD4
CURB	▬	TEMPORARY SEDIMENT BASIN	○ SB1
FENCE	▬	SILT FENCE - TYPE A	○ SFA
OVERHEAD ELECTRIC	▬	SILT FENCE - TYPE B	○ SFB
OVERHEAD TELEPHONE	▬	SILT FENCE - TYPE C	○ SFC
OVERHEAD CABLE	▬	STORM DRAIN OUTLET PROTECTION	○ ST
UNDERGROUND TELEPHONE	▬	SURFACE ROUGHENING	○ SU
UNDERGROUND ELECTRIC	▬	DISTURBED AREA STABILIZATION - TEMPORARY STABILIZATION	○ TS1
UNDERGROUND CABLE	▬	DISTURBED AREA STABILIZATION - TEMPORARY GRASSING	○ TS2
WATER LINE	▬	DISTURBED AREA STABILIZATION - PERMANENT GRASSING	○ TS3
SEWER LINE	▬	MATting/BLANKETS	○ Mb
GAS LINE	▬		
STORM SEWER/CULVERT	▬		
EDGE OF WOODS	▬		
CONTOUR LINE	▬		

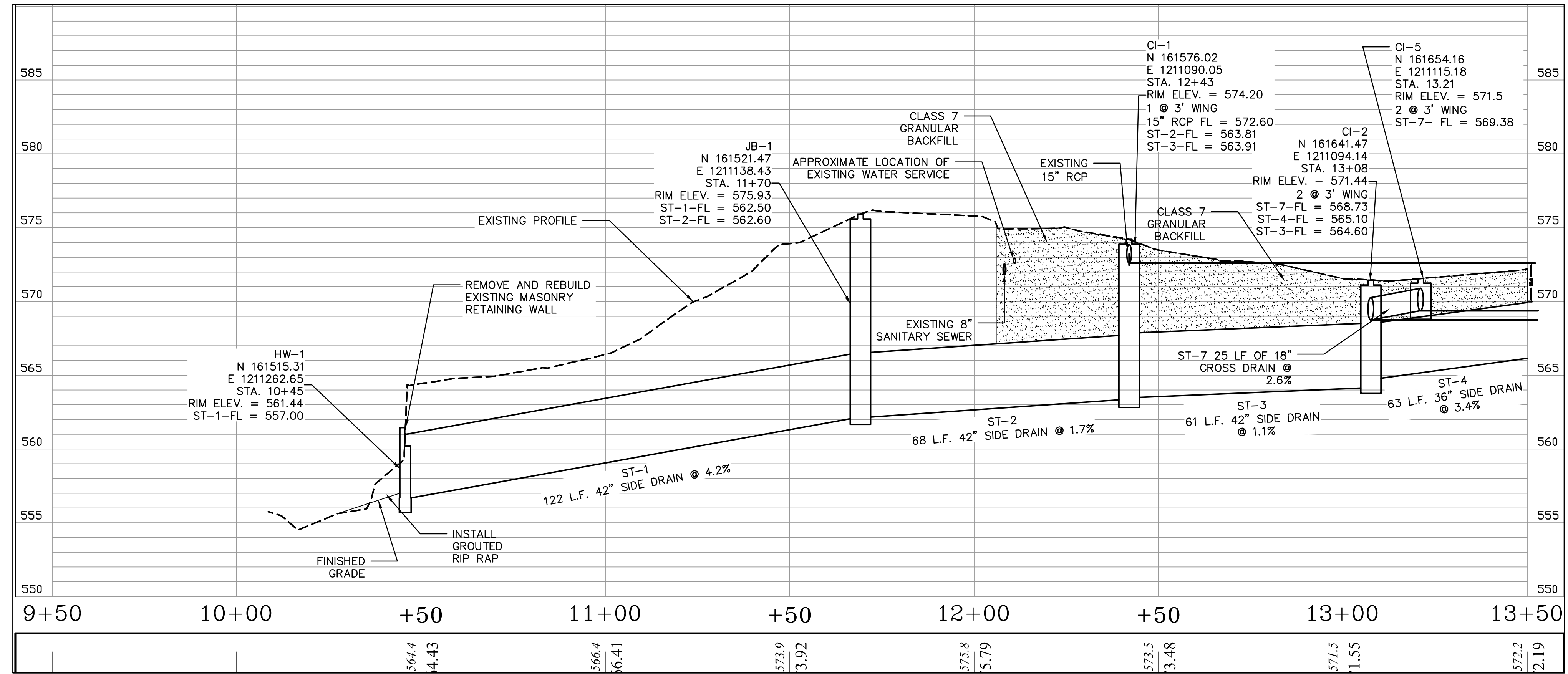
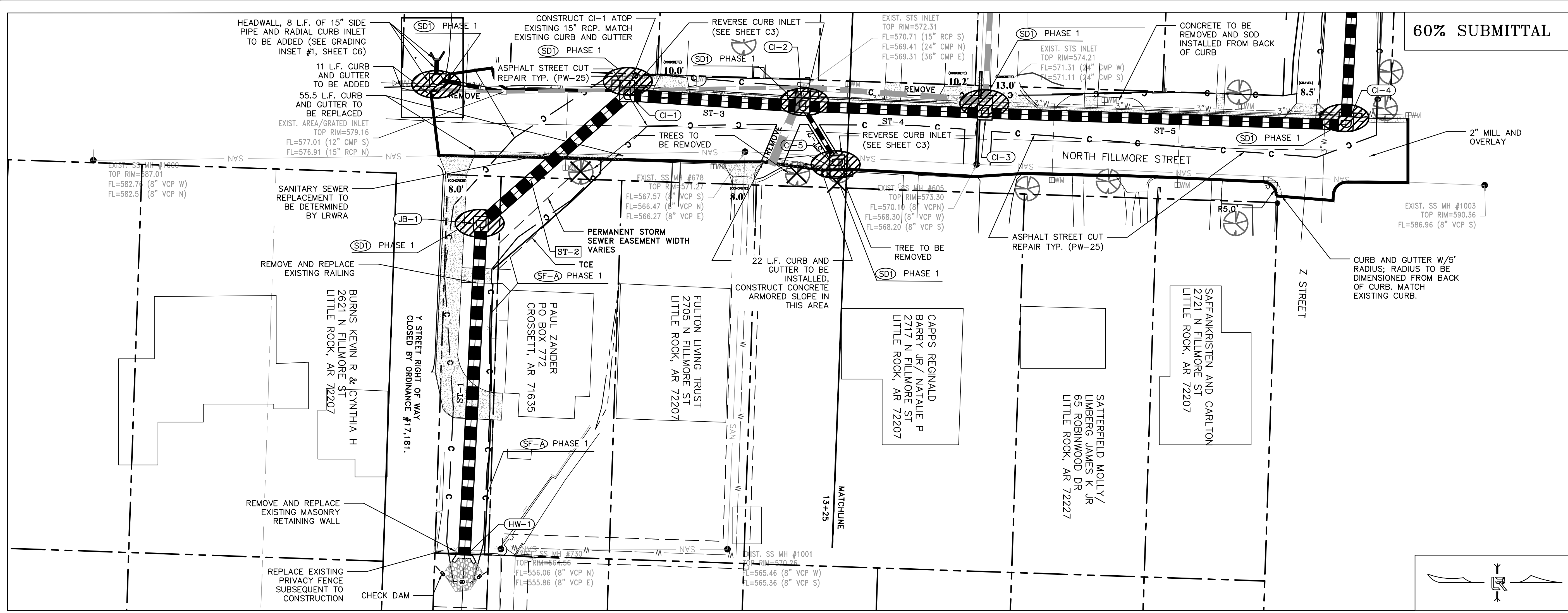
- NOTES:
- UNLESS OTHERWISE SPECIFIED, CONCRETE TO BE 4" MIN. THICKNESS & REINFORCEMENT SHALL BE 6X6 W2.9 X W2.9 WWF (SHEETS).
 - CONTROL JOINTS TO BE 15' O.C. TRANSVERSE TO CHANNEL CENTERLINE AXIS. FILL JOINTS WITH SEALANT.
 - SEE P&P SHEETS FOR SPECIFIC LOCATIONS.
 - CONCRETE SHALL BE CLASS B, 3500#, 4%-7% A.E.
 - JOINT SEALANT TO BE SONNEBORN SL2 SELF LEVELING URETHANE AS MANUFACTURED BY CHEMREX OR APPROVED EQUAL.



CITY OF LITTLE ROCK, ARKANSAS
FILLMORE STREET DRAINAGE
LEGEND, QUANTITIES AND DETAILS

DEPARTMENT OF PUBLIC WORKS
CIVIL ENGINEERING
701 W. MARKHAM
LITTLE ROCK, ARKANSAS 72201

DRAWN BY
TH
DESIGNED
MB
CHECKED
BAP
DATE
04-16-2019
SCALE
H: 1"=20'
V: 1"=5'
PROJECT NO.
13-16-DR-120
SHEET NO.
C2



REVISIONS	DATE

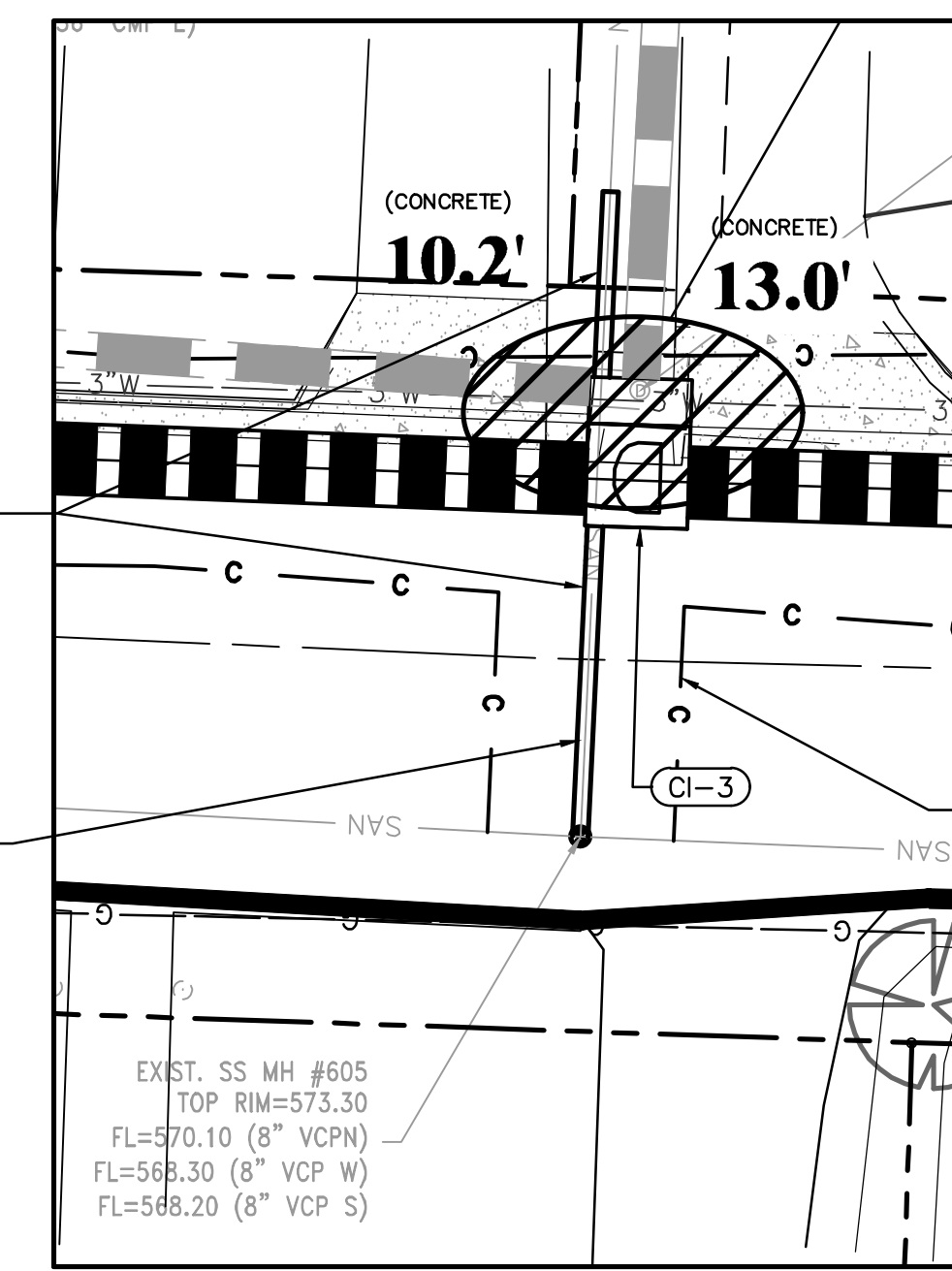
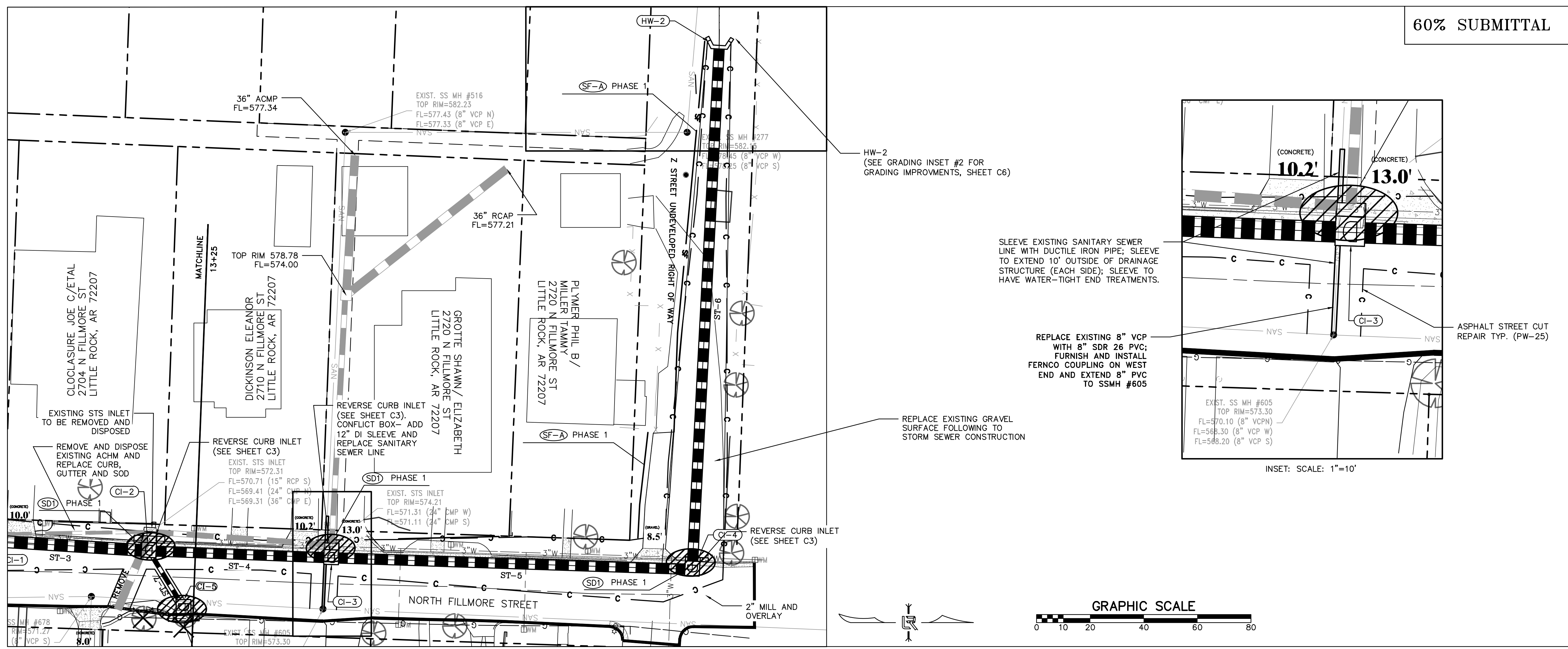
CITY OF LITTLE ROCK, ARKANSAS
FILLMORE STREET DRAINAGE
P & P SHEET 1

DEPARTMENT OF PUBLIC WORKS
CIVIL ENGINEERING
701 W. MARKHAM
LITTLE ROCK, ARKANSAS 72201

DRAWN BY TH
DESIGNED MB
CHECKED MB
BAP
DATE 04-16-2019
SCALE H: 1"=20'
V: 1"=5'
PROJECT NO. 13-16-DR-120
SHEET NO. C3

60% SUBMITTAL

REVISIONS DATE



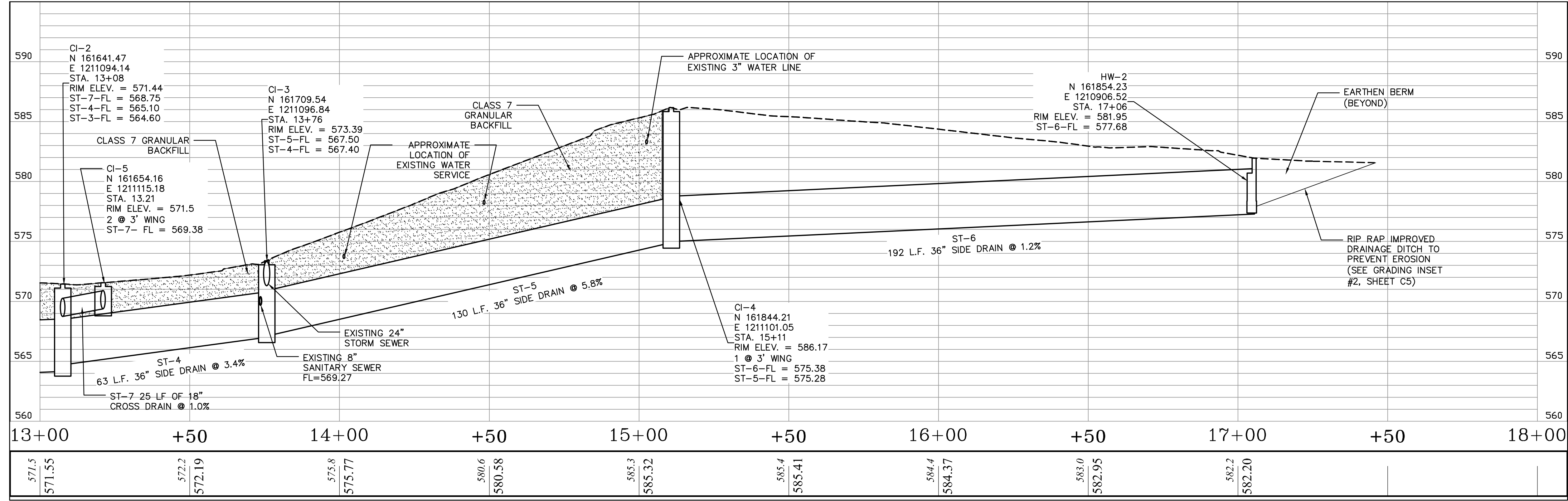
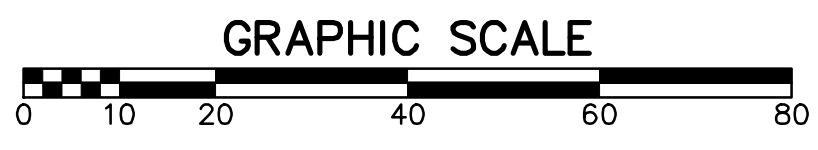
SLEEVE EXISTING SANITARY SEWER LINE WITH DUCTILE IRON PIPE; SLEEVE TO EXTEND 10' OUTSIDE OF DRAINAGE STRUCTURE (EACH SIDE); SLEEVE TO HAVE WATER-TIGHT END TREATMENTS.

REPLACE EXISTING 8" VCP WITH 8" SDR 26 PVC; FURNISH AND INSTALL FERNCO COUPLING ON WEST END AND EXTEND 8" PVC TO SSMH #605

REPLACE EXISTING GRAVEL SURFACE FOLLOWING TO STORM SEWER CONSTRUCTION

ASPHALT STREET CUT REPAIR TYP. (PW-25)

INSET: SCALE: 1"=10'



CITY OF LITTLE ROCK, ARKANSAS
 FILLMORE STREET DRAINAGE
 P & P SHEET 2

DEPARTMENT OF PUBLIC WORKS
 CIVIL ENGINEERING
 701 W. MARKHAM
 LITTLE ROCK, ARKANSAS 72201

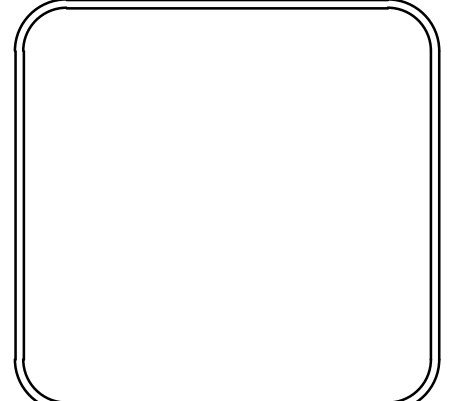


DRAWN BY TH
 DESIGNED MB
 CHECKED BAP
 DATE 04-16-2019
 SCALE H: 1"=20' V: 1"=5'
 PROJECT NO. 13-16-DR-120
 SHEET NO. C4

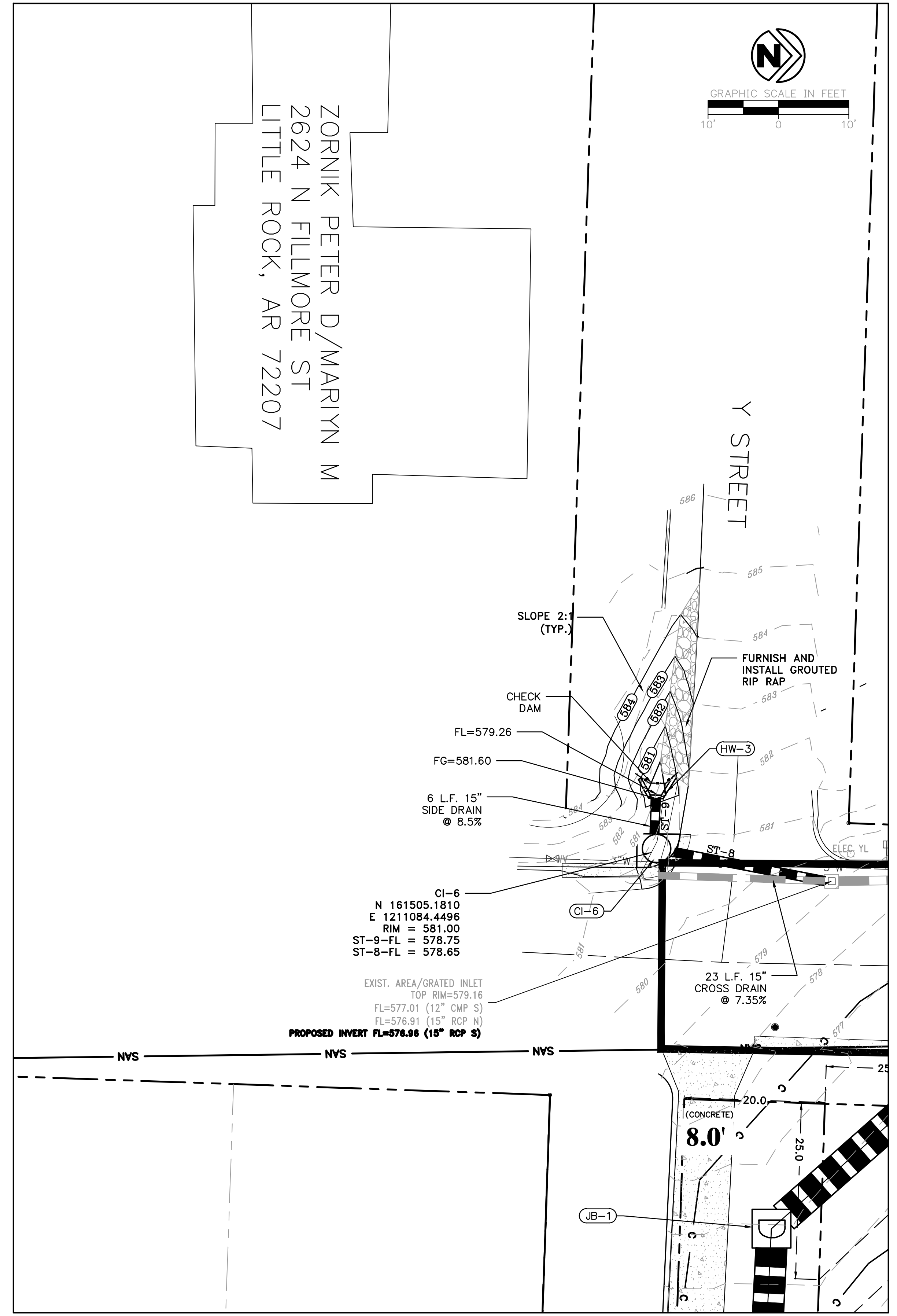
REVISIONS	DATE

CITY OF LITTLE ROCK, ARKANSAS
 FILLMORE STREET DRAINAGE
 SUPPLEMENTAL GRADING DETAILS

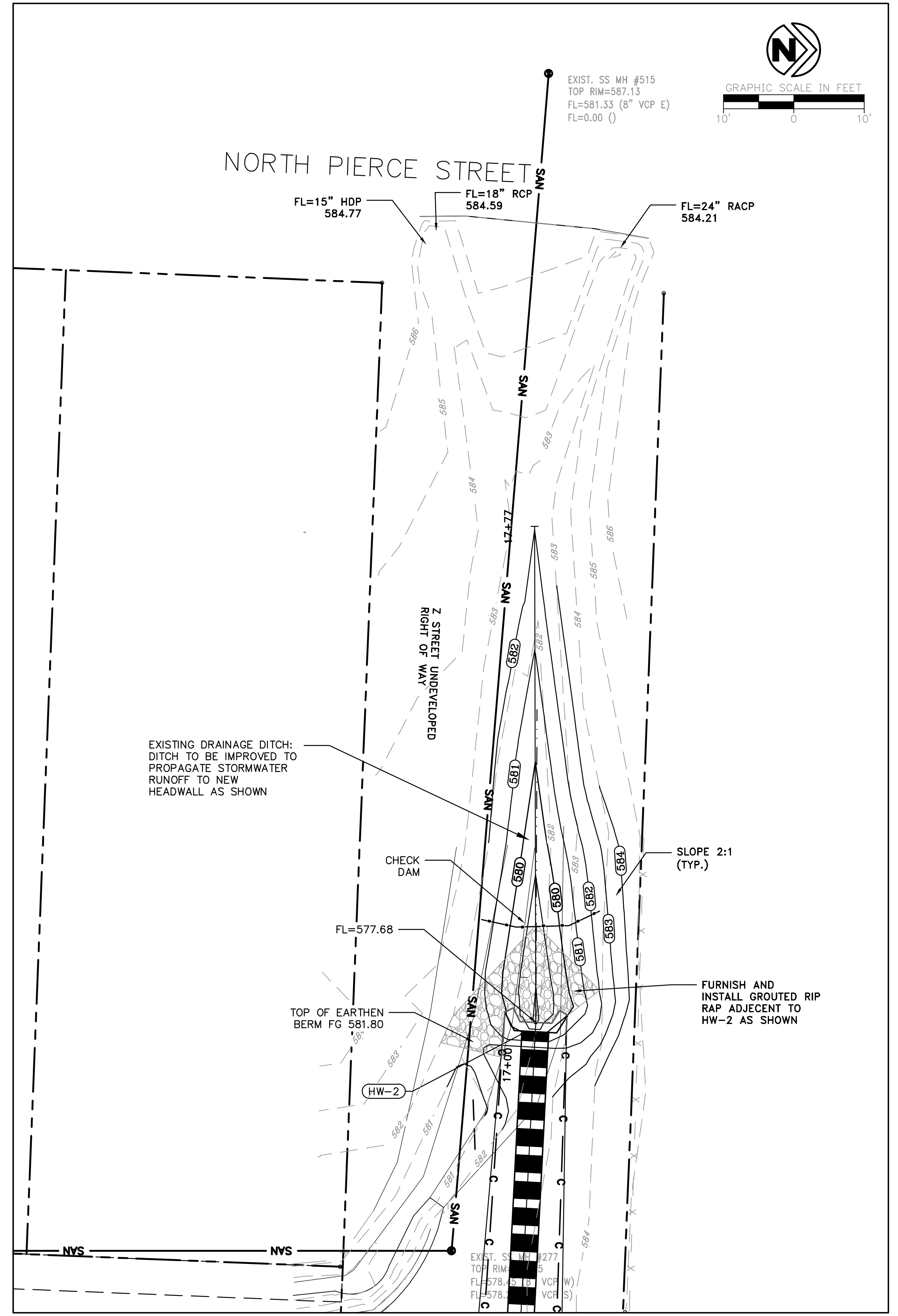
DEPARTMENT OF PUBLIC WORKS
 CIVIL ENGINEERING
 701 W. MARKHAM
 LITTLE ROCK, ARKANSAS 72201



DRAWN BY
 TH
 DESIGNED
 MB
 CHECKED
 BAP
 DATE
 04-16-2019
 SCALE
 H: 1"=20'
 V: 1"=5'
 PROJECT NO.
 13-16-DR-120
 SHEET NO.
 C5



GRADING INSET #1: SCALE: 1"=10'



GRADING INSET #2: SCALE: 1"=10'