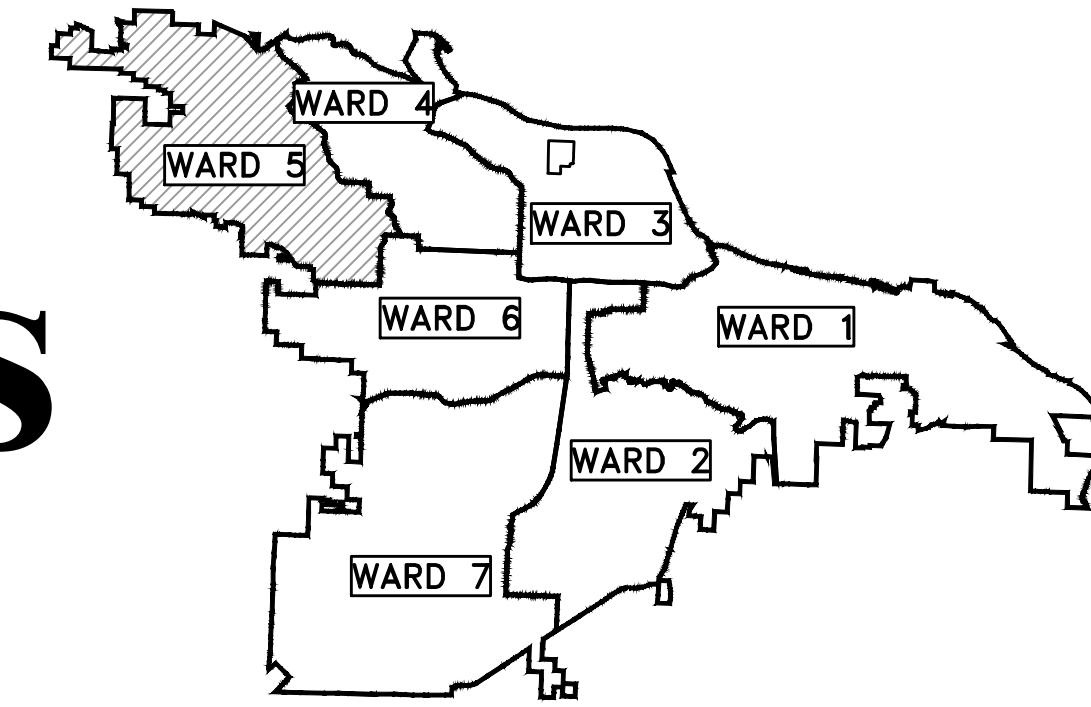


CLR PROJECT # 5-17-ST-224B

GAMBLE ROAD IMPROVEMENTS

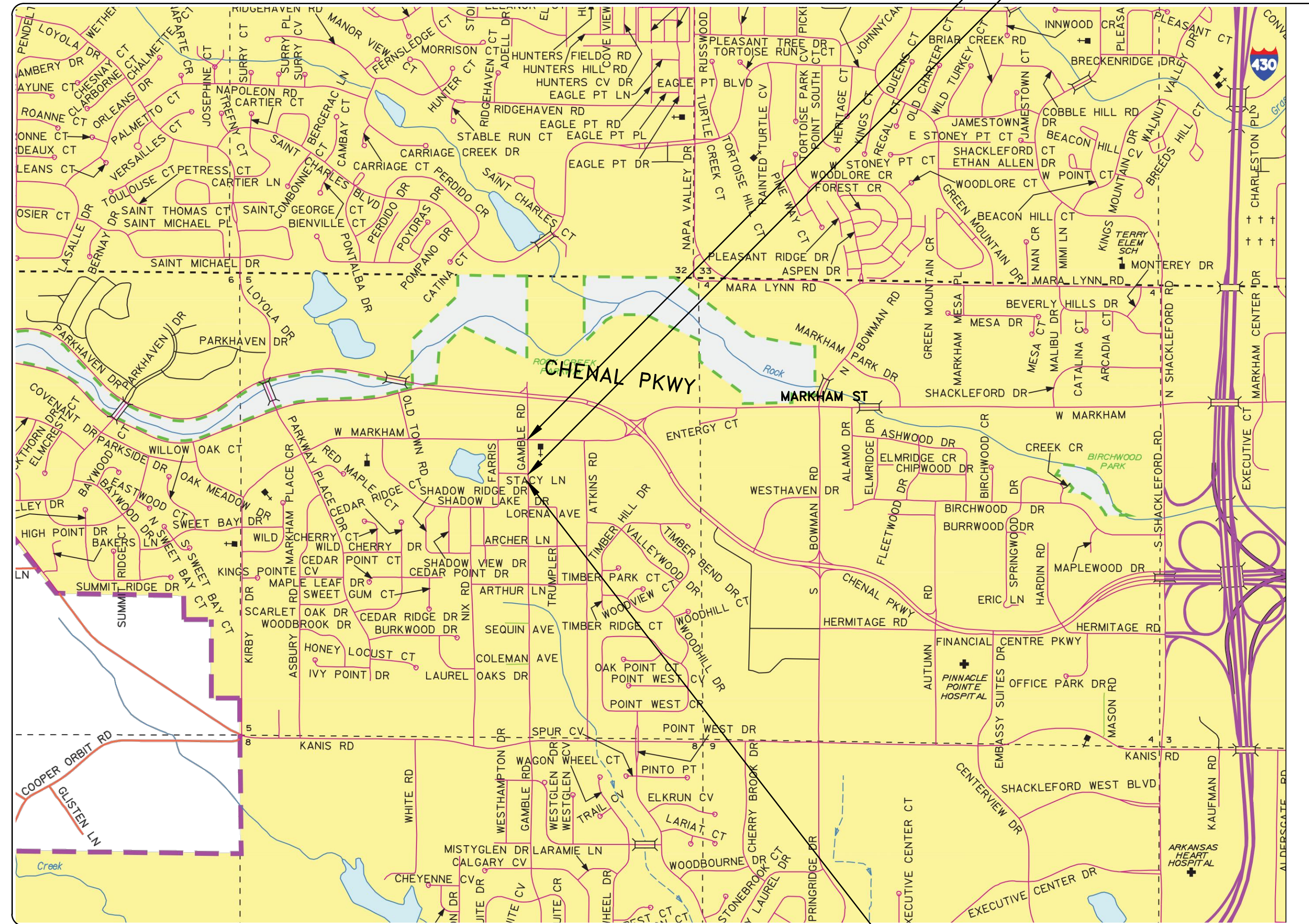
STACY LANE TO MARKHAM STREET



PROJECT LOCATION - WARD 5

END PROJECT STA. 16+80

BEGIN PROJECT STA. 12+83



SHEET LIST TABLE	
SHEET NO.	TITLE
C1	COVER SHEET
C2	LEGEND
C3	TYPICAL SECTIONS
C4	PLAN - PROFILE
C5	SURVEY CONTROL
C6	DRIVEWAYS
C7	EROSION CONTROL
C8	X-SECTIONS 1
C9	X-SECTIONS 2
C10	X-SECTIONS 3
C11	X-SECTIONS 4

PROJECT LOCATION
1" = 1000'

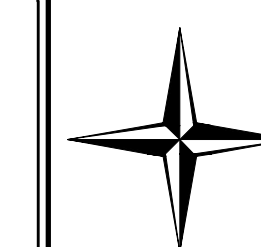


2019-2021
BOND PROGRAM

DEPARTMENT OF PUBLIC WORKS
CIVIL ENGINEERING
701 WEST MARKHAM STREET
LITTLE ROCK, ARKANSAS 72201



Know what's below.
Call before you dig.



CENTRAL ARKANSAS ENGINEERING
A PROFESSIONAL LIMITED LIABILITY COMPANY

CIVIL ENGINEERING | SURVEYING | GIS

1012 AUTUMN ROAD, SUITE #2 | LITTLE ROCK, ARKANSAS 72211
OFFICE: 501.227.4459 | FAX: 501.227.3820 | EMAIL: CAENGR@SBCGLOBAL.NET
www.CentralArkansasEngineering.com

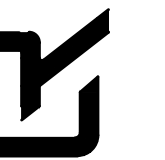
REVISIONS	DATE

60% Submittal

CITY OF LITTLE ROCK, ARKANSAS
GAMBLE ROAD IMPROVEMENTS

COVER

DEPARTMENT OF PUBLIC WORKS
CIVIL ENGINEERING
701 W. MARKHAM
LITTLE ROCK, ARKANSAS 72201



DRAWN BY
ZR
DESIGNED
RH
CHECKED
RH
DATE
03-29-19
SCALE
Value

PROJECT NO.
CLR # 5-17-ST-224B
SHEET NO.

C1

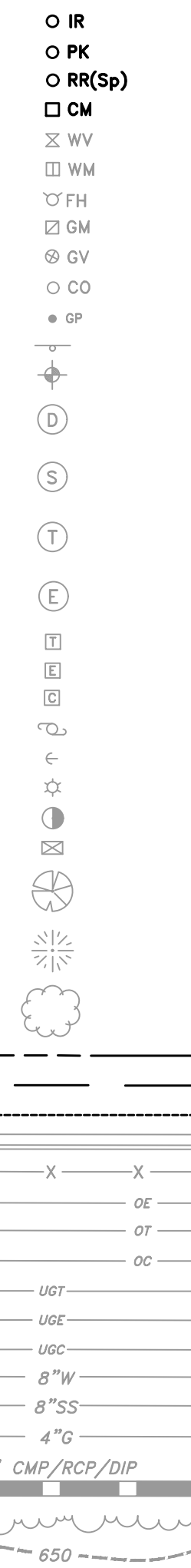
CLR PROJECT # 5-17-ST-224B			
GAMBLE ROAD IMPROVEMENTS 60% SUBMITTAL			
3/28/2019			
ITEM #	ITEM DESCRIPTION	UNIT	QUANTITY
2.01	SITE PREPARATION	LS	1
2.02	CLEARING AND GRUBBING TREEMS	LS	1
3.01	UNCLASSIFIED EXCAVATION	CY	901
3.40	TOPSOIL	CY	85
4.01	AGGREGATE BASE COURSE	TON	650
6.01	ACHM SURFACE COURSE	TON	236
7.06	CONCRETE DRIVEWAY (6" THICK), STANDARD FINISH	SF	634
8.03	CONCRETE CURB AND GUTTER (CLASS 3)	LF	810
9.04	CONCRETE SIDEWALK (4" THICK)	SF	1657
9.40	CONCRETE SIDEWALK "TURN UP WALL", (PW-44)(PW-45)	SF	330
10.04	CURB INLET - 4' BOX	EA	4
10.07	WING 3' EXTENSION	EA	1
13.18	CROSS DRAIN PIPE 18"	LF	62
13.19	SIDE DRAIN PIPE 18"	LF	155
14.01	SOLID SOD, BERMUDA	SY	160
16.01	MAINTANCE OF TRAFFIC	LS	1
17.01	PAVEMENT REPAIRS	SY	12
18.01	REMOVE AND REPLACE FENCE	LF	145
19.01	FINAL CLEANUP	LS	1
24.07	SEDIMENT BARRIER, GRAVEL RING	EA	4
24.11	SILT FENCE - TYPE A (SFA)	LF	700
24.18	DISTURBED AREA STABILIZATION - TEMPORARY STABILIZATION(TS1)	AC	0.2
606.18	FLARED END SECTION 18"	EA	2

NOTES:

THIS AREA IS FOR ANY SPECIAL CONDITIONS OR NOTES THAT NEED TO BE ADDED TO THE PLAN SET THAT ARE NOT COVERED IN THE BID/CONTRACT DOCUMENTS OR STANDARD SPECIFICATIONS.

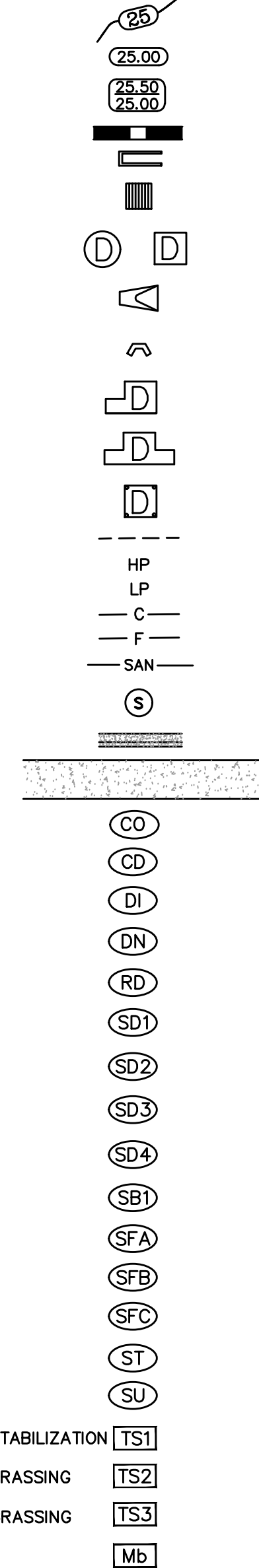
EXISTING

- IRON ROD
- PK NAIL
- R.R. SPIKE
- CONC. MONUMENT
- WATER VALVE
- WATER METER
- FIRE HYDRANT
- GAS METER
- GAS VALVE
- CLEAN-OUT
- GUARD POST (BOLLARD)
- SIGN POST
- BENCHMARK
- STORM SEWER MANHOLE
- SANITARY SEWER MANHOLE
- TELEPHONE MANHOLE
- ELECTRIC MANHOLE
- TELEPHONE BOX
- ELECTRIC BOX
- CABLE BOX
- UTILITY POLE
- GUY WIRE
- LIGHT POLE
- POST OR POLE (TYPE AS NOTED)
- MAILBOX
- DECIDUOUS TREE
- EVERGREEN/CONIFEROUS TREE
- BUSH
- PROPERTY LINE
- SETBACK LINE
- EASEMENT LINE
- CURB
- FENCE
- OVERHEAD ELECTRIC
- OVERHEAD TELEPHONE
- OVERHEAD CABLE
- UNDERGROUND TELEPHONE
- UNDERGROUND ELECTRIC
- UNDERGROUND CABLE
- WATER LINE
- SEWER LINE
- GAS LINE
- STORM SEWER/CULVERT
- EDGE OF WOODS
- CONTOUR LINE



PROPOSED

- PROPOSED CONTOUR
- PROPOSED SPOT ELEVATION
- PROPOSED SPOT CURB ELEVATION
- STORM SEWER – PIPE
- STORM SEWER – MITERED END SECTION
- STORM SEWER – GRATE INLET
- STORM SEWER – JUNCTION BOX
- STORM SEWER – FLARED END SECTION
- STORM SEWER – HEADWALL
- STORM SEWER – SINGLE WING
- STORM SEWER – DOUBLE WING
- STORM SEWER – AREA INLET
- GRADE BREAK LINE
- HIGH POINT
- LOW POINT
- CUT LINE
- FILL LINE
- SANITARY SEWER PIPE
- SANITARY SEWER MANHOLE
- PROPOSED CURB
- PROPOSED CONCRETE
- CONSTRUCTION – ENTRANCE/EXIT
- CHECK DAM
- DIVERSION BERM
- DOWNDRAIN STRUCTURE – TEMPORARY
- ROCK DAM
- SEDIMENT BARRIER – SILT FENCE
- SEDIMENT BARRIER – GRAVEL RING
- SEDIMENT BARRIER – BLOCK & GRAVEL
- SEDIMENT BARRIER – BLOCK
- TEMPORARY SEDIMENT BASIN
- SILT FENCE – TYPE A
- SILT FENCE – TYPE B
- SILT FENCE – TYPE C
- STORM DRAIN OUTLET PROTECTION
- SURFACE ROUGHENING
- DISTURBED AREA STABILIZATION –TEMPORARY STABILIZATION
- DISTURBED AREA STABILIZATION –TEMPORARY GRASSING
- DISTURBED AREA STABILIZATION –PERMANENT GRASSING
- MATting/BLANKETS



REVISIONS	DATE

60% Submittal

CITY OF LITTLE ROCK, ARKANSAS
GAMBLE ROAD IMPROVEMENTS

LEGEND

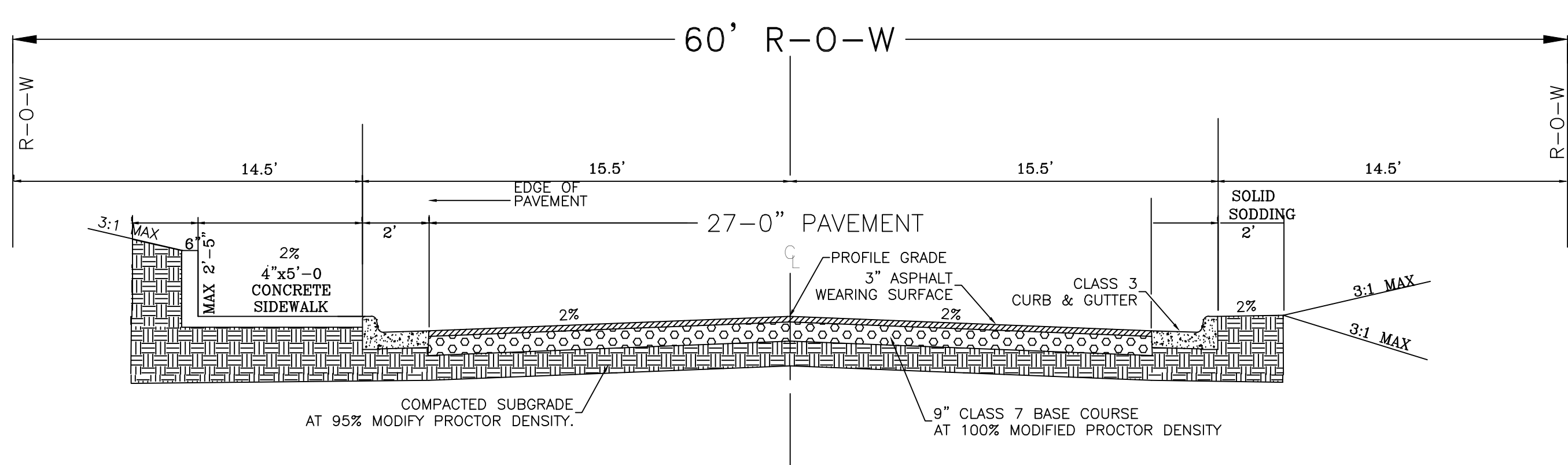
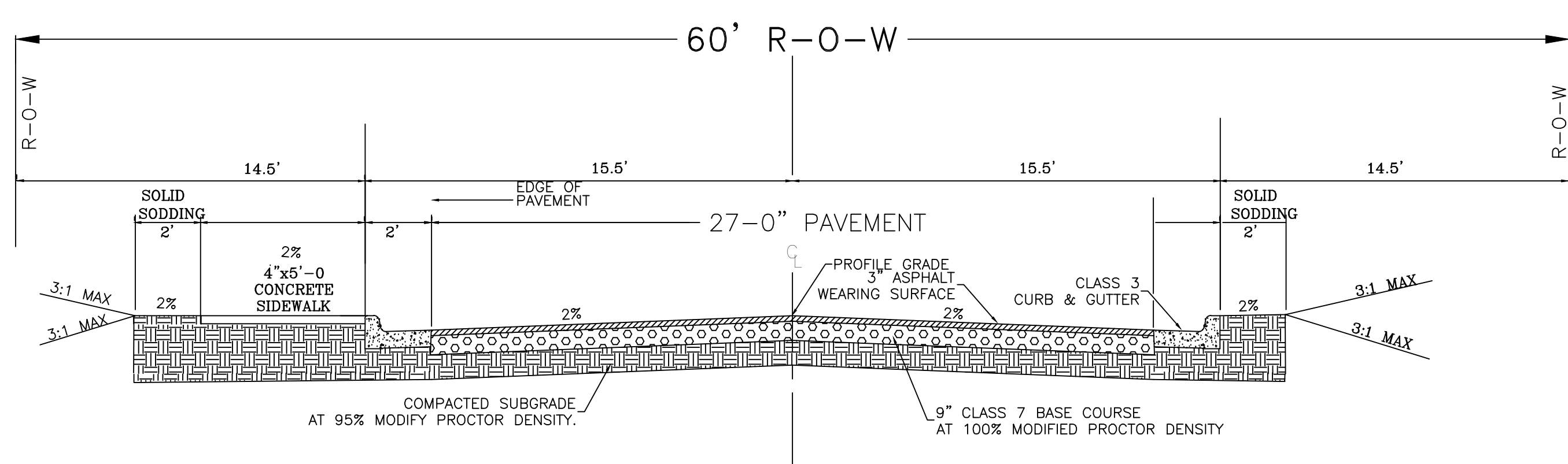
DEPARTMENT OF PUBLIC WORKS
CIVIL ENGINEERING
701 W. MARKHAM
LITTLE ROCK, ARKANSAS 72201

DRAWN BY ZR
DESIGNED RH
CHECKED RH
DATE 03-29-19
SCALE Value
PROJECT NO. CLR # 5-17-ST-224B
SHEET NO. C2

REVISIONS	DATE

60% Submittal

CITY OF LITTLE ROCK, ARKANSAS
 GAMBLE ROAD IMPROVEMENTS
 TYPICAL SECTIONS



GENERAL NOTES

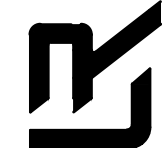
1. IN AREAS TO RECEIVE BITUMINOUS PAVING, CONCRETE DRIVEWAYS, OR CURB AND GUTTER, SUBGRADE SHALL BE COMPACTED TO A DENSITY NOT LESS THAN 95% OF MAXIMUM DENSITY OBTAINED AT OPTIMUM MOISTURE CONTENT. (AASHTO T-180)
2. FOR AREAS OF SUBGRADE PREPARATION TO RECEIVE CONCRETE SIDEWALKS, SUBGRADE SHALL BE COMPACTED TO A DENSITY OF 90% MAXIMUM.(AASHTO T-180).
3. CRUSHED STONE- MATERIAL IN EACH COURSE SHALL BE COMPACTED TO A DENSITY OF 100% MAXIMUM (AASHTO T-191).
4. CENTERLINE PROFILE WILL REQUIRE HEIGHT GREATER THAN CURB FOR SOME STREETS TO MAINTAIN 2% MINIMUM CROSS-SLOPE.

GENERAL NOTES

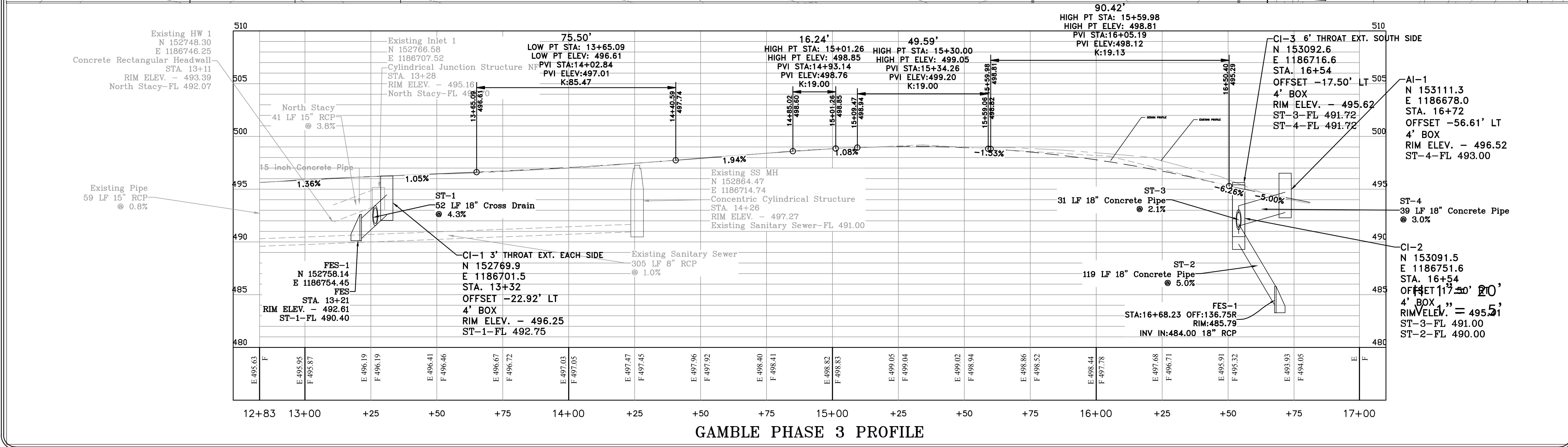
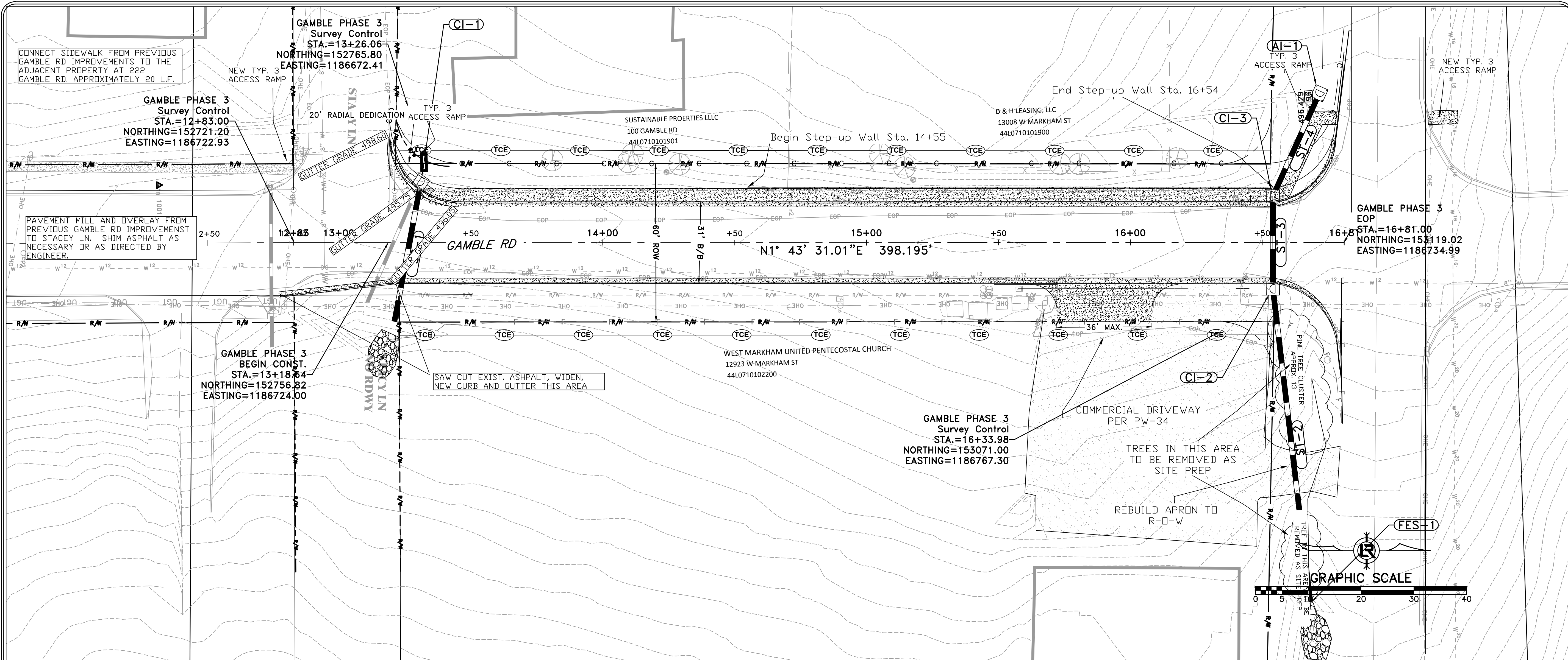
1. IN AREAS TO RECEIVE BITUMINOUS PAVING, CONCRETE DRIVEWAYS, OR CURB AND GUTTER, SUBGRADE SHALL BE COMPACTED TO A DENSITY NOT LESS THAN 95% OF MAXIMUM DENSITY OBTAINED AT OPTIMUM MOISTURE CONTENT. (AASHTO T-180)
2. FOR AREAS OF SUBGRADE PREPARATION TO RECEIVE CONCRETE SIDEWALKS, SUBGRADE SHALL BE COMPACTED TO A DENSITY OF 90% MAXIMUM.(AASHTO T-180).
3. CRUSHED STONE- MATERIAL IN EACH COURSE SHALL BE COMPACTED TO A DENSITY OF 100% MAXIMUM (AASHTO T-191).
4. CENTERLINE PROFILE WILL REQUIRE HEIGHT GREATER THAN CURB FOR SOME STREETS TO MAINTAIN 2% MINIMUM CROSS-SLOPE.

STA. 14+73 TO STA. 16+52

DEPARTMENT OF PUBLIC WORKS
 CIVIL ENGINEERING
 701 W. MARKHAM
 LITTLE ROCK, ARKANSAS 72201



DRAWN BY ZR
DESIGNED RH
CHECKED RH
DATE 03-29-19
SCALE Value
PROJECT NO. CLR # 5-17-ST-224B
SHEET NO. C3



GAMBLE PHASE 3 PROFILE

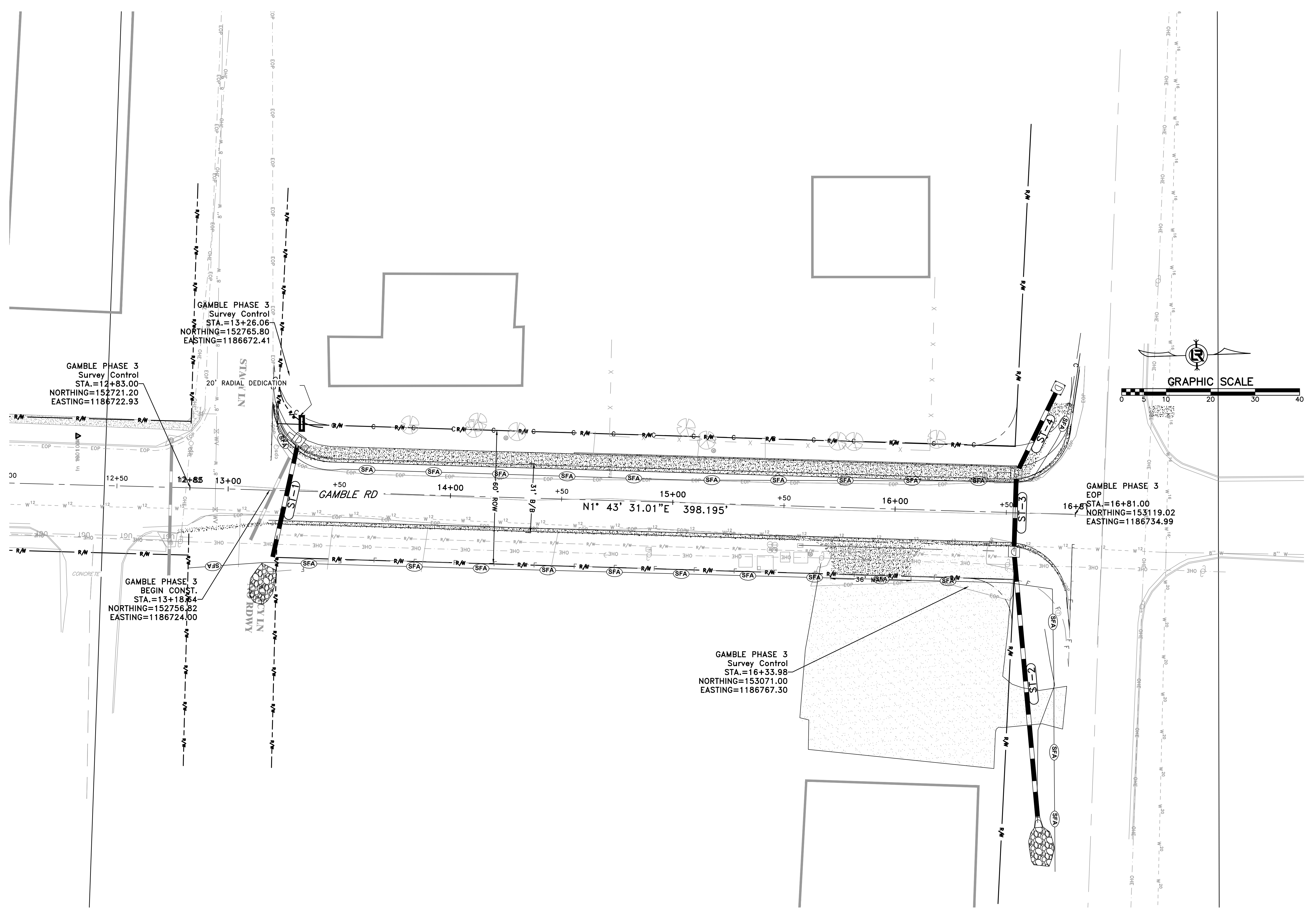
REVISIONS	DATE

60% Submittal

CITY OF LITTLE ROCK, ARKANSAS
GAMBLE ROAD IMPROVEMENTS
PLAN - PROFILE

DEPARTMENT OF PUBLIC WORKS
CIVIL ENGINEERING
701 W. MARKHAM
LITTLE ROCK, ARKANSAS 72201

DRAWN BY
ZR
DESIGNED
RH
CHECKED
RH
DATE
03-29-19
SCALE
Value
PROJECT NO.
CLR # 5-17-ST-224B
SHEET NO.
C4

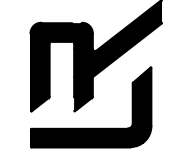


REVISIONS	DATE

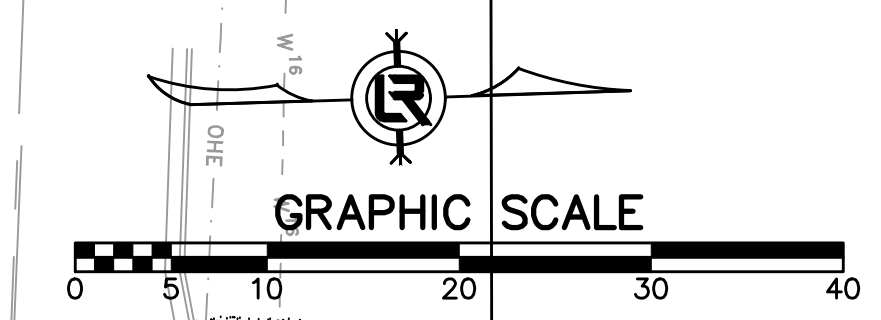
60% Submittal

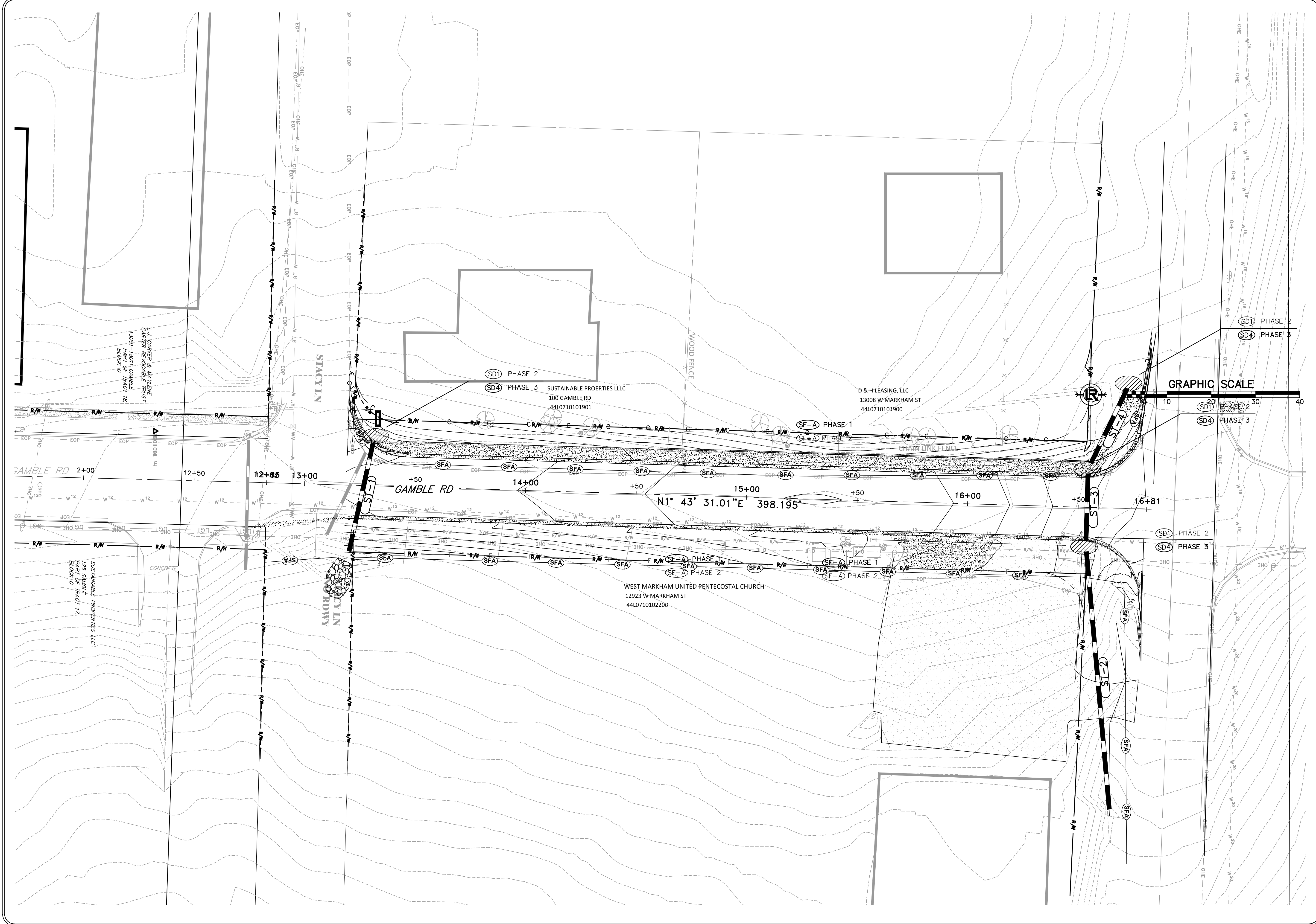
CITY OF LITTLE ROCK, ARKANSAS
 GAMBLE ROAD IMPROVEMENTS
 SURVEY CONTROL

DEPARTMENT OF PUBLIC WORKS
 CIVIL ENGINEERING
 701 W. MARKHAM
 LITTLE ROCK, ARKANSAS 72201



DRAWN BY
 ZR
 DESIGNED
 RH
 CHECKED
 RH
 DATE
 03-29-19
 SCALE
 Value
 PROJECT NO.
 CLR # 5-17-ST-224B
 SHEET NO.
C5





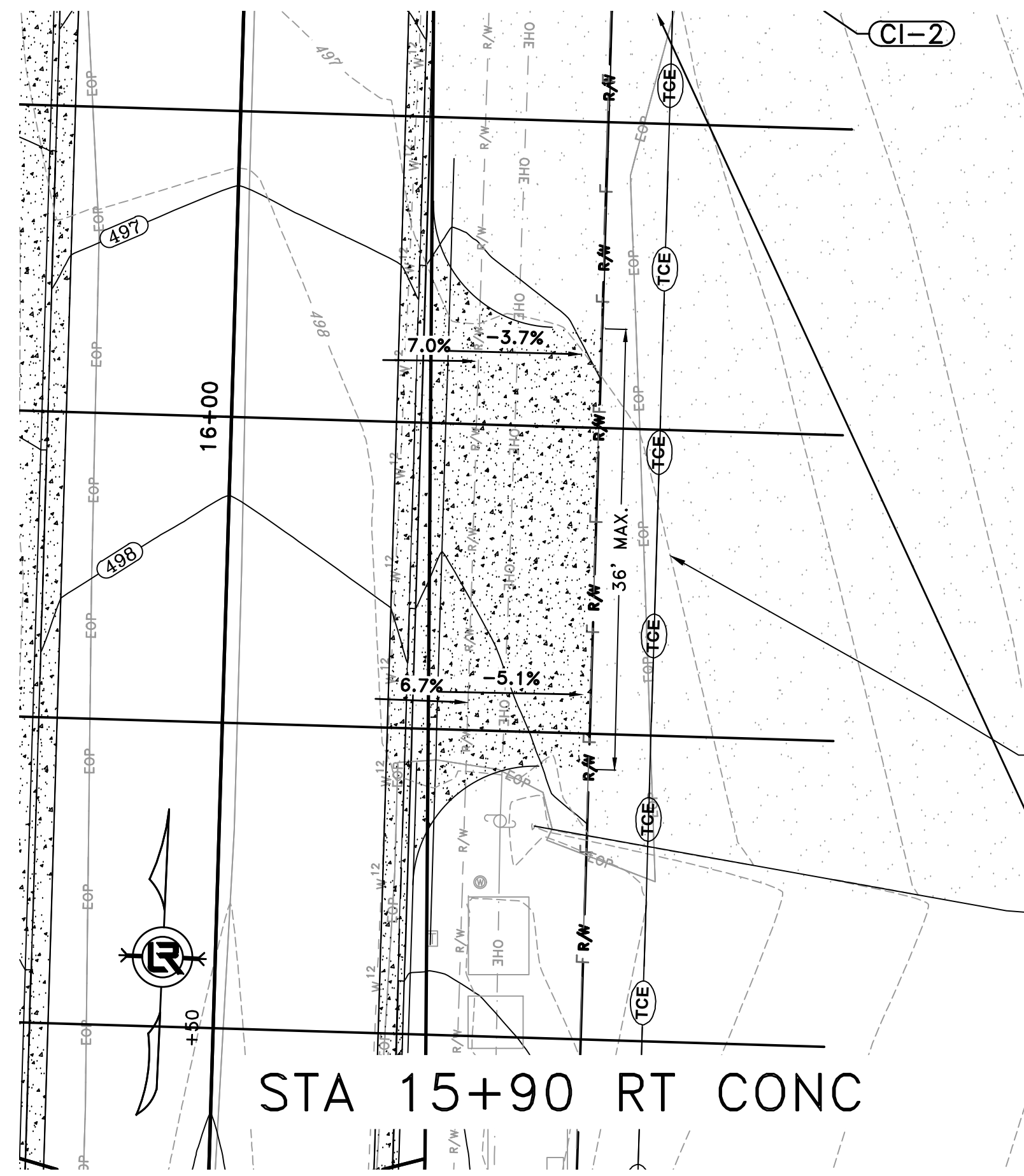
REVISIONS	DATE

60% SUBMITTAL

CITY OF LITTLE ROCK, ARKANSAS
 GAMBLE ROAD IMPROVEMENTS
 EROSION CONTROL

DEPARTMENT OF PUBLIC WORKS
 CIVIL ENGINEERING
 701 W. MARKHAM
 LITTLE ROCK, ARKANSAS 72201

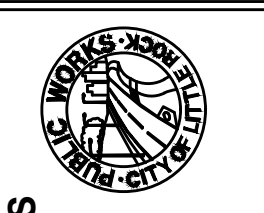
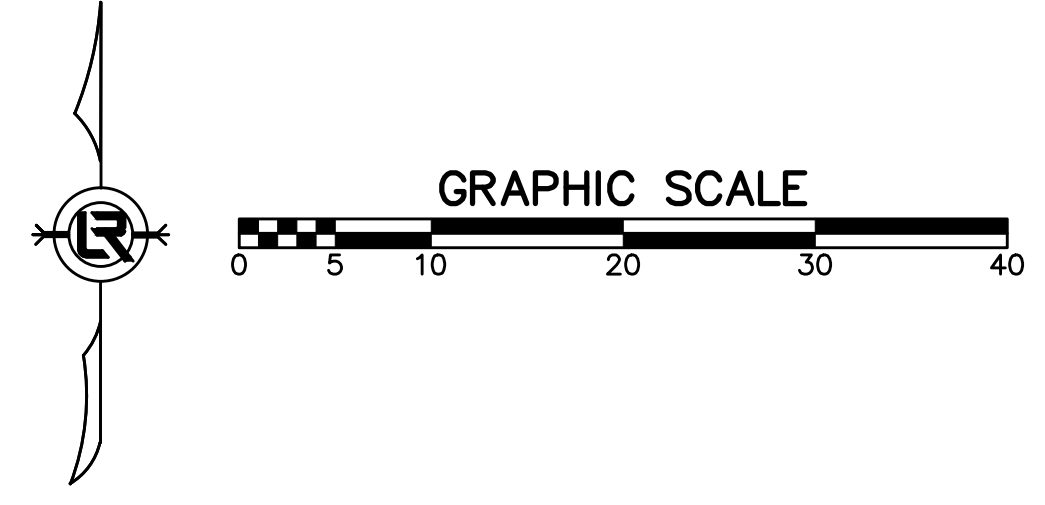
DRAWN BY ZR
DESIGNED RH
CHECKED RH
DATE 03-29-19
SCALE
PROJECT NO. 5-17-ST-224B
SHEET NO. C6



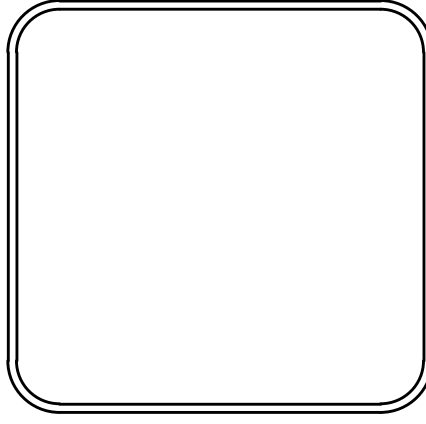
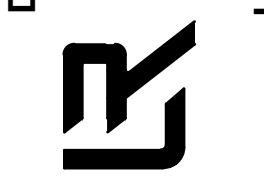
REVISIONS	DATE

60% SUBMITTAL

CITY OF LITTLE ROCK, ARKANSAS
GAMBLE ROAD IMPROVEMENTS
DRIVEWAYS



DEPARTMENT OF PUBLIC WORKS
 CIVIL ENGINEERING
 701 W. MARKHAM
 LITTLE ROCK, ARKANSAS 72201



DRAWN BY ZR
DESIGNED RH
CHECKED RH
DATE 03-29-19
SCALE

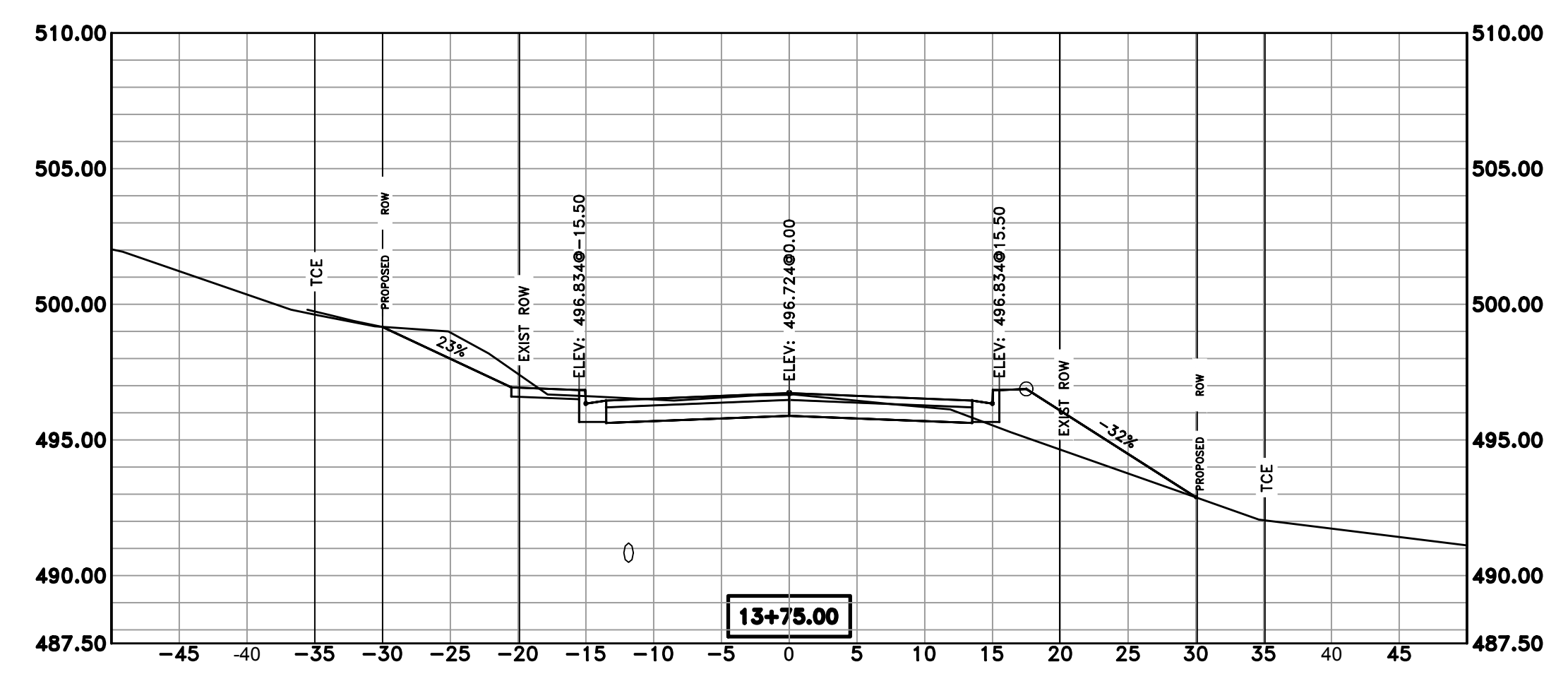
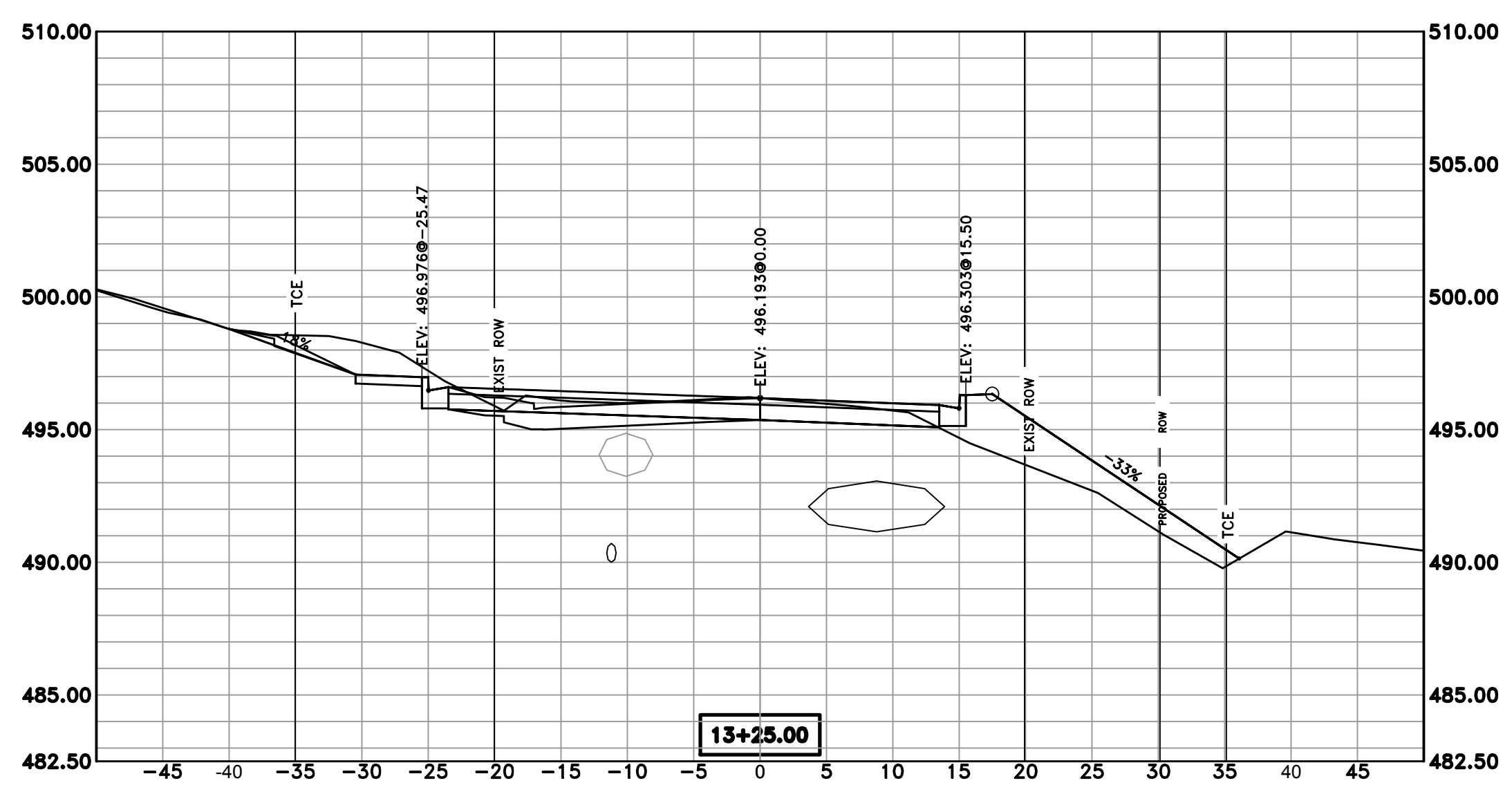
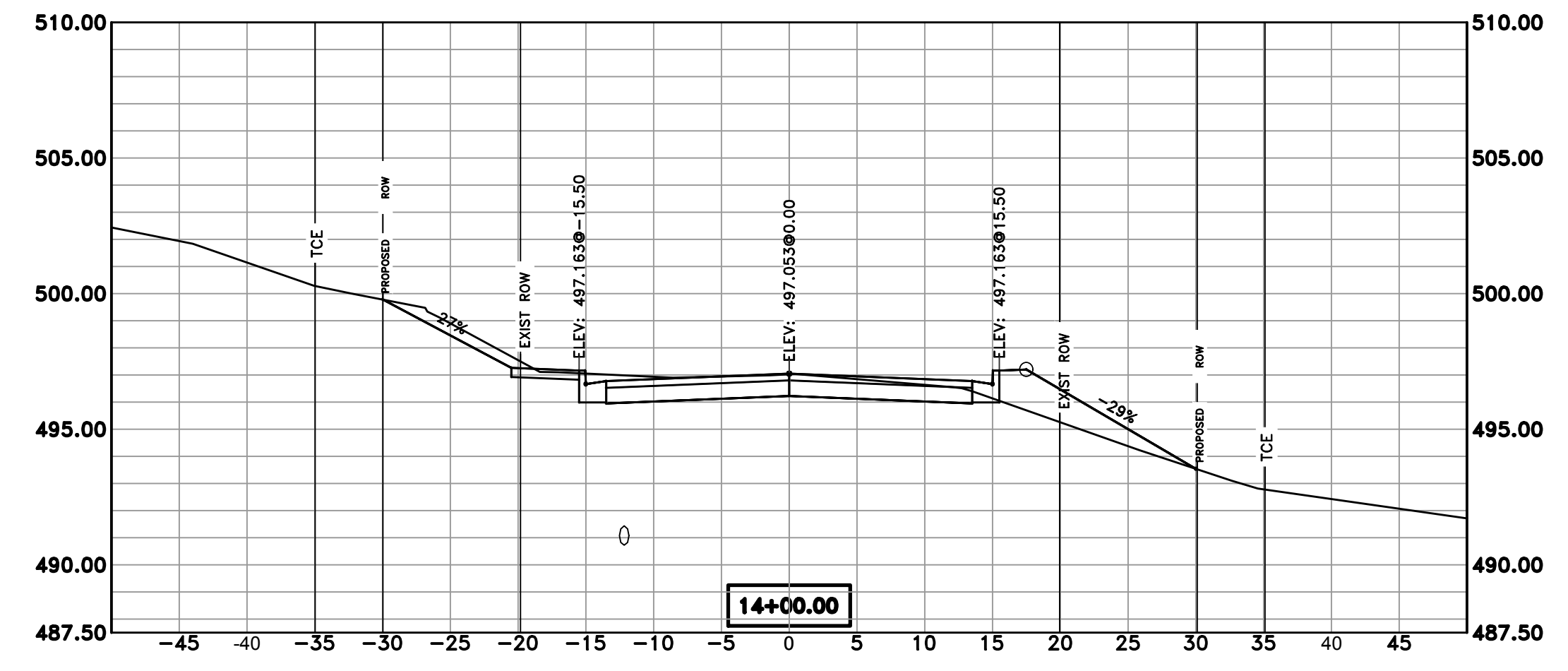
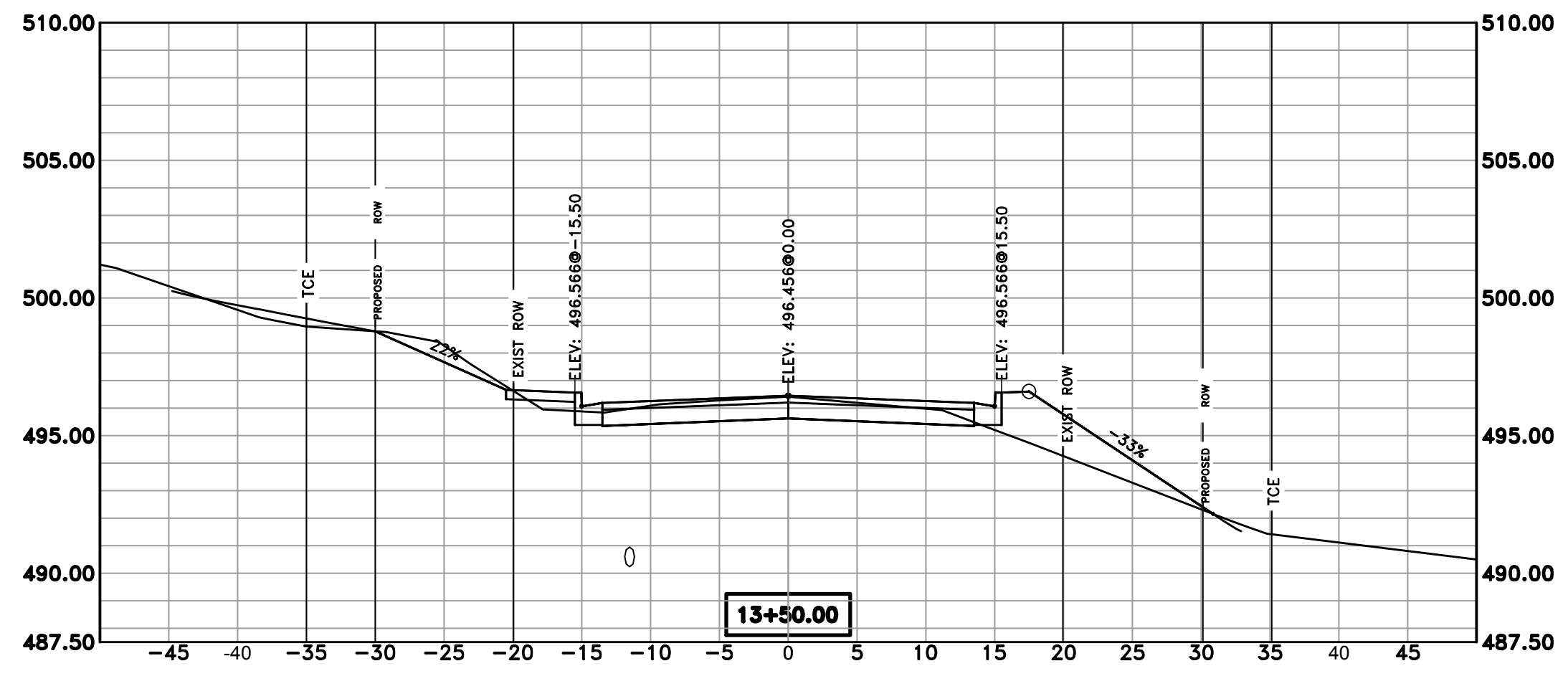
PROJECT NO. 5-17-ST-224B
SHEET NO. C7

REVISIONS DATE

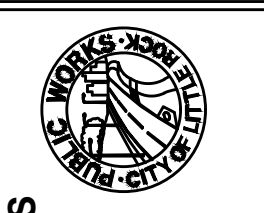
60% SUBMITTAL

CITY OF LITTLE ROCK, ARKANSAS
GAMBLE ROAD IMPROVEMENTS

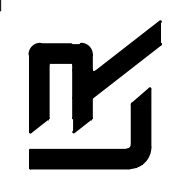
X-SECTIONS 1



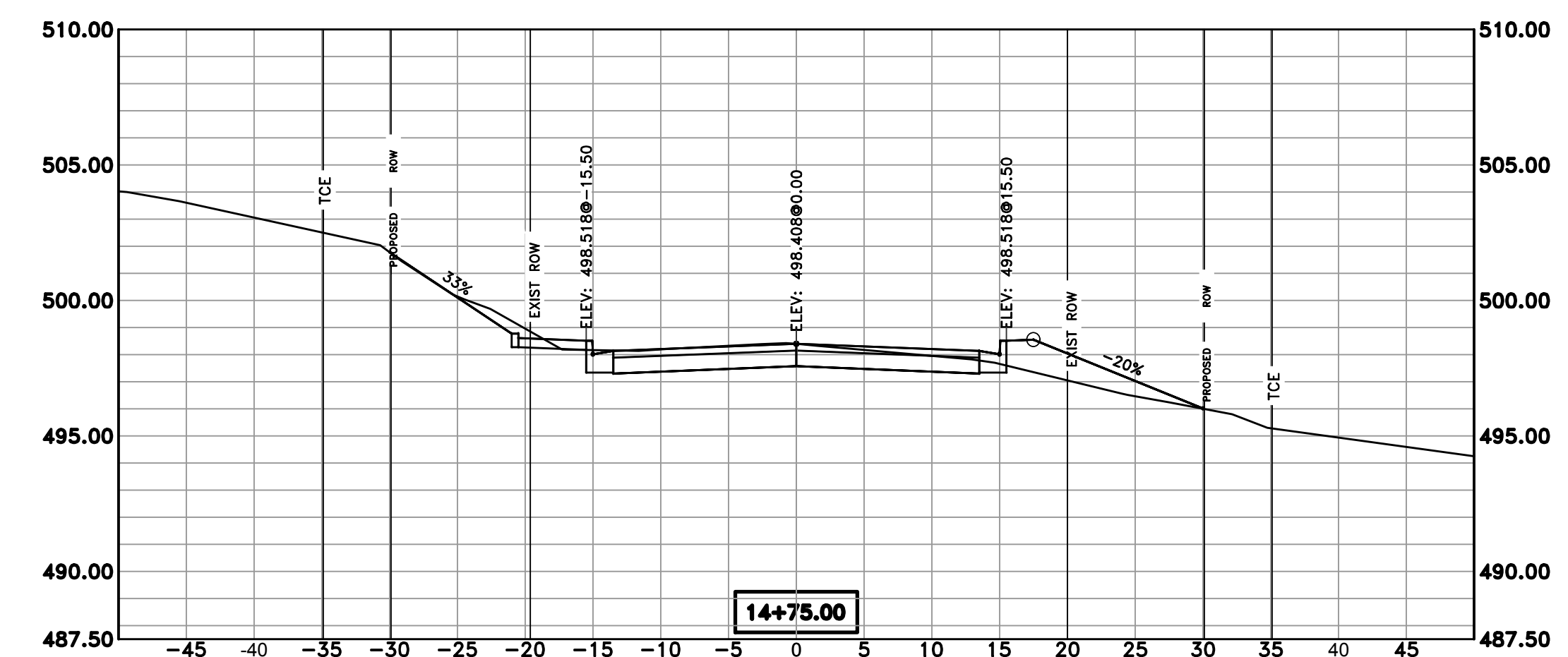
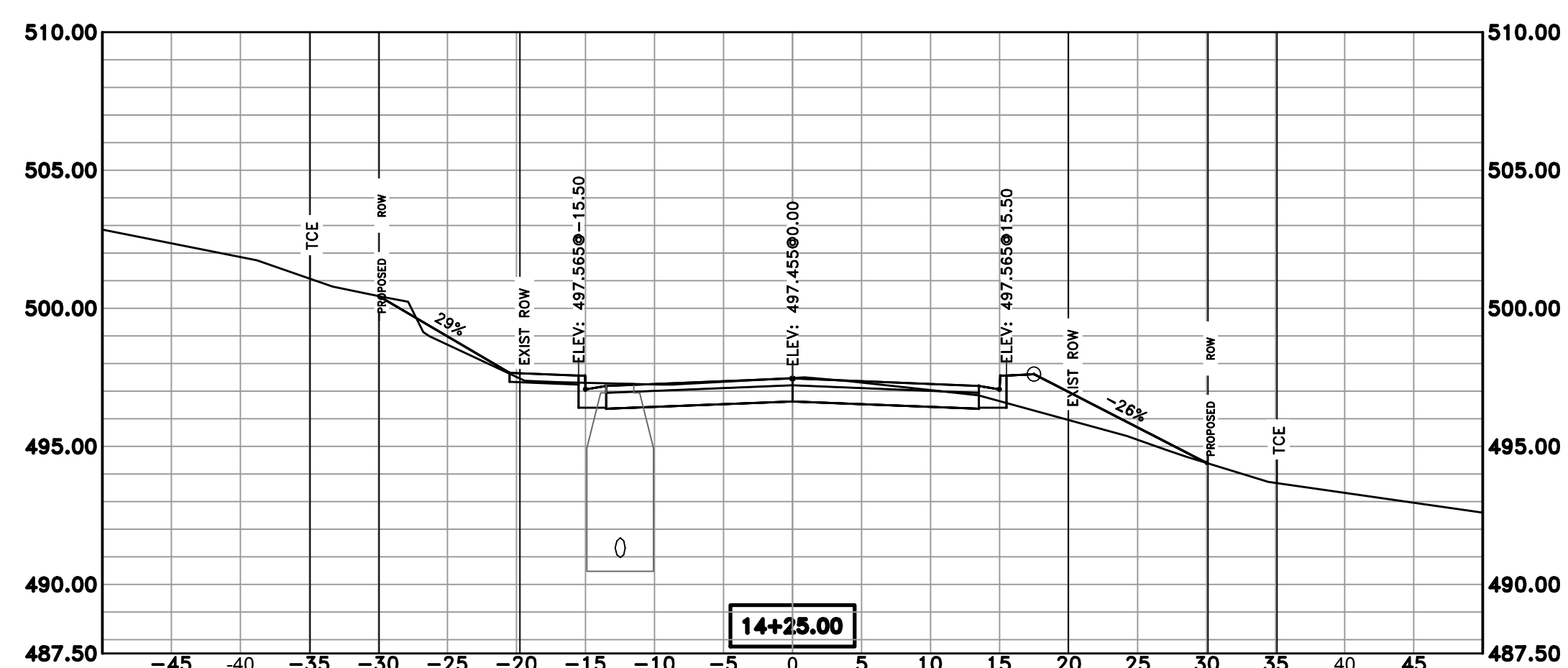
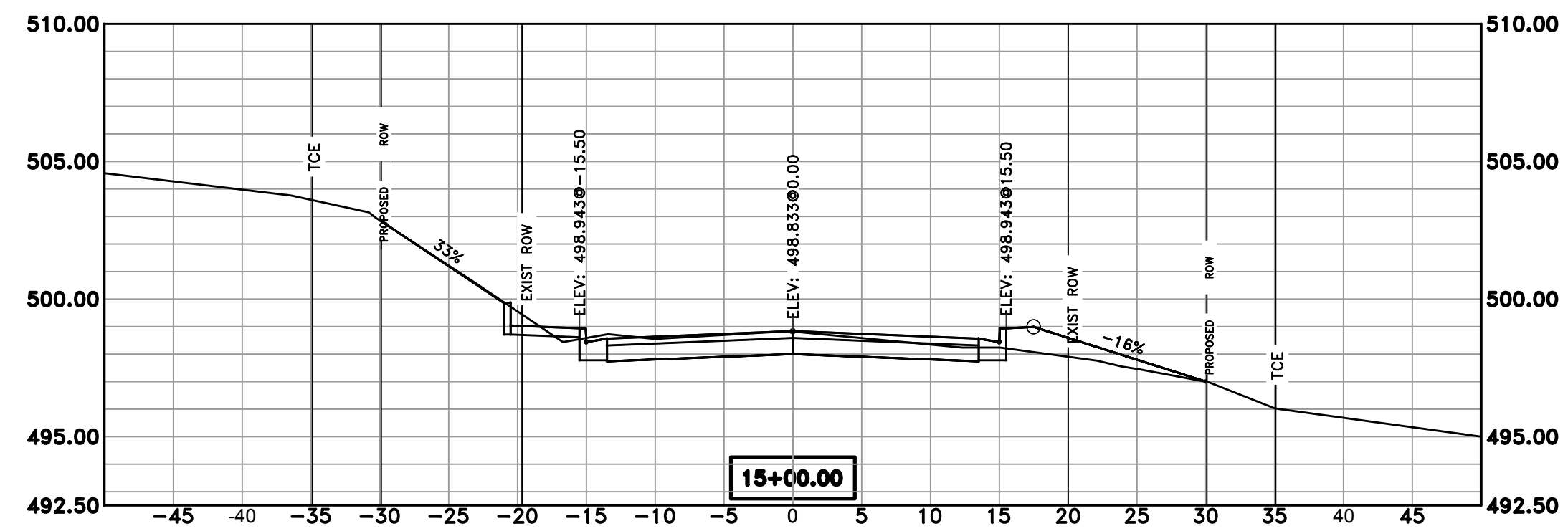
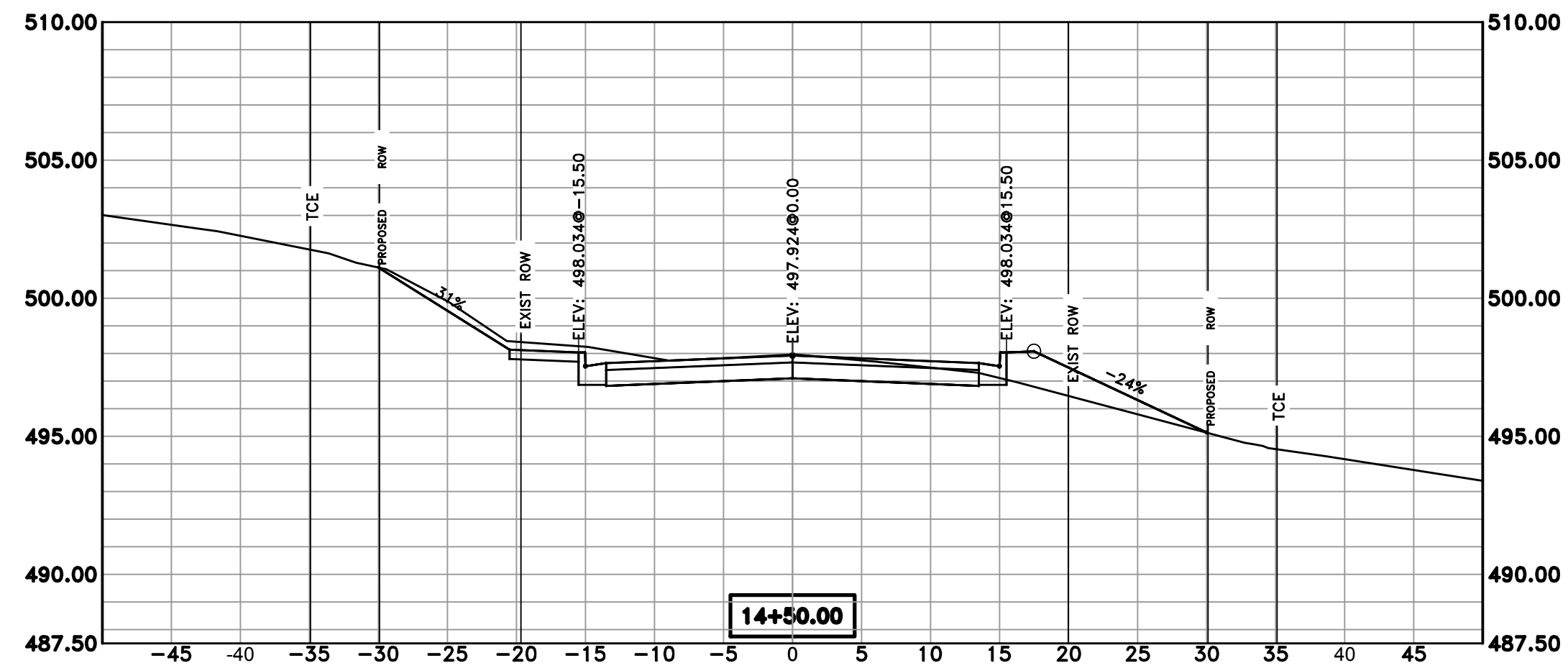
SCALE:
1" = 5' V
1" = 10' H



DEPARTMENT OF PUBLIC WORKS
CIVIL ENGINEERING
701 W. MARKHAM
LITTLE ROCK, ARKANSAS 72201



DRAWN BY ZR
DESIGNED RH
CHECKED RH
DATE 03-29-19
SCALE AS NOTED
PROJECT NO. 5-17-ST-224B
SHEET NO. C8



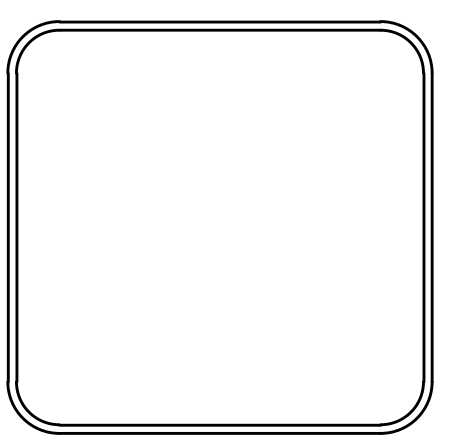
SCALE:
 1" = 5' V
 1" = 10' H

REVISIONS	DATE

60% SUBMITTAL

CITY OF LITTLE ROCK, ARKANSAS
 GAMBLE ROAD IMPROVEMENTS
 X-SECTIONS 2

DEPARTMENT OF PUBLIC WORKS
 CIVIL ENGINEERING
 701 W. MARKHAM
 LITTLE ROCK, ARKANSAS 72201



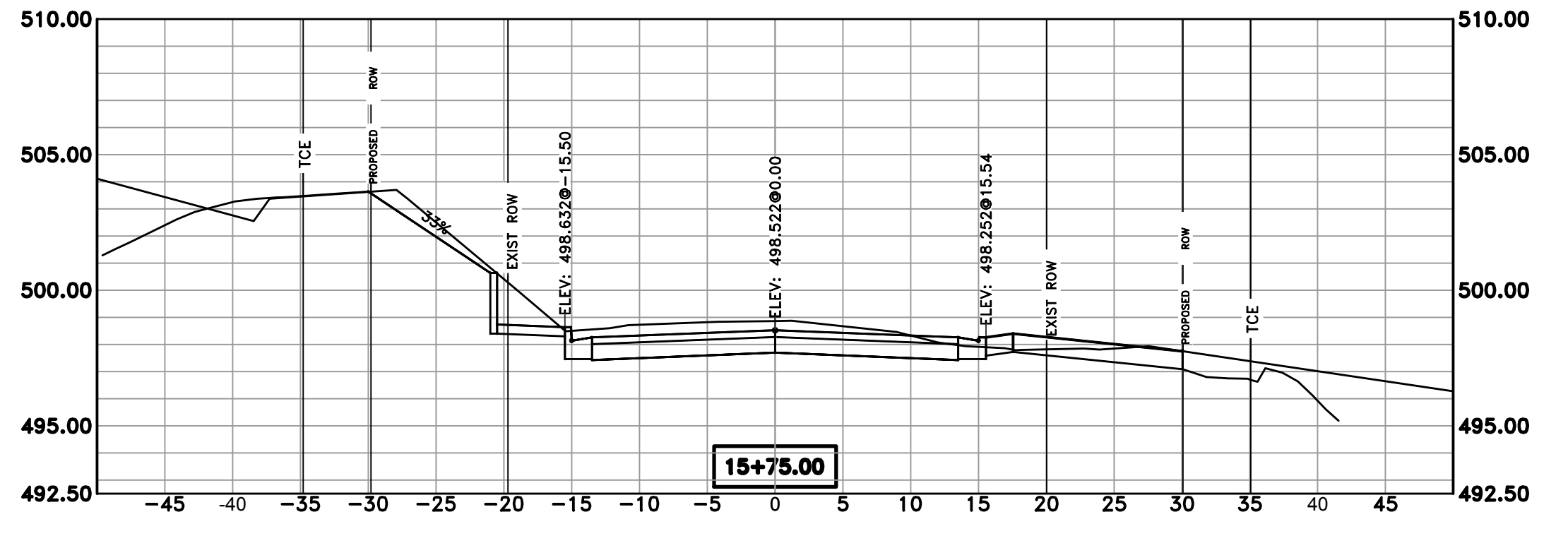
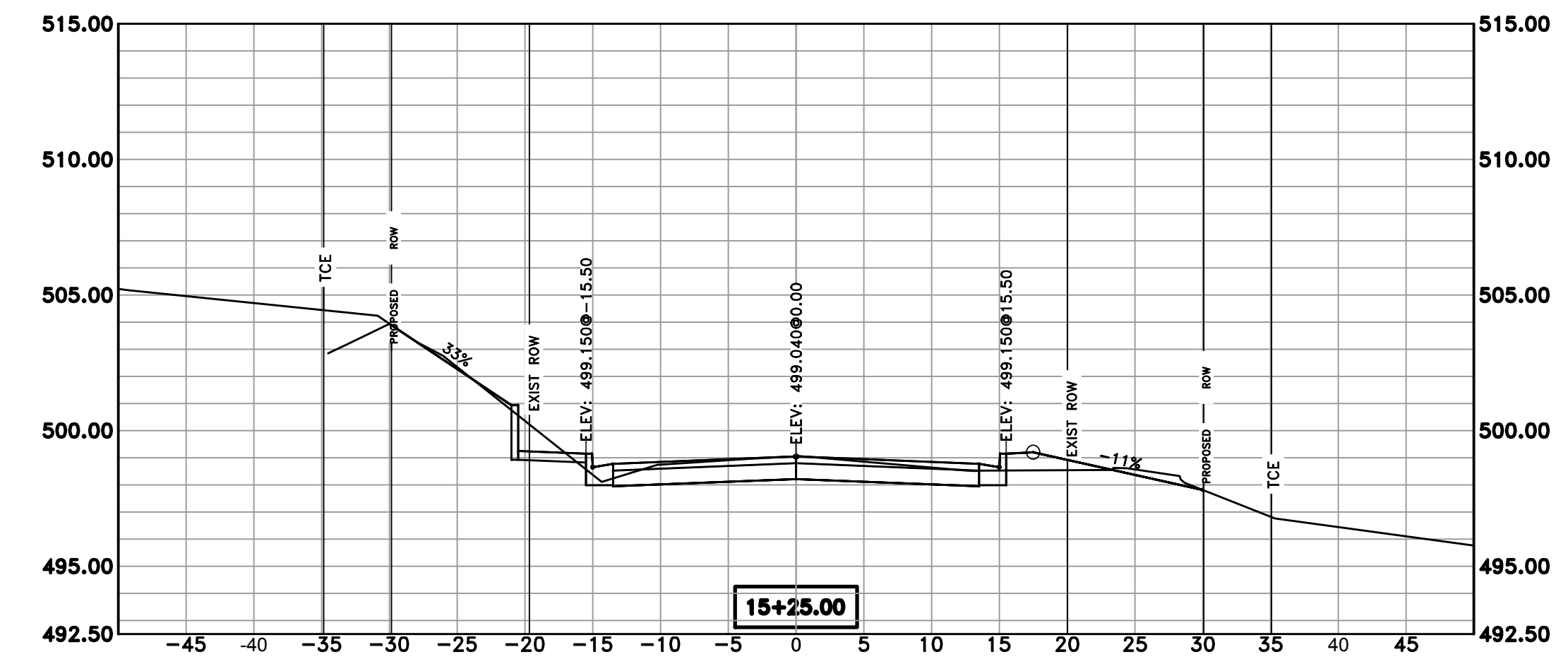
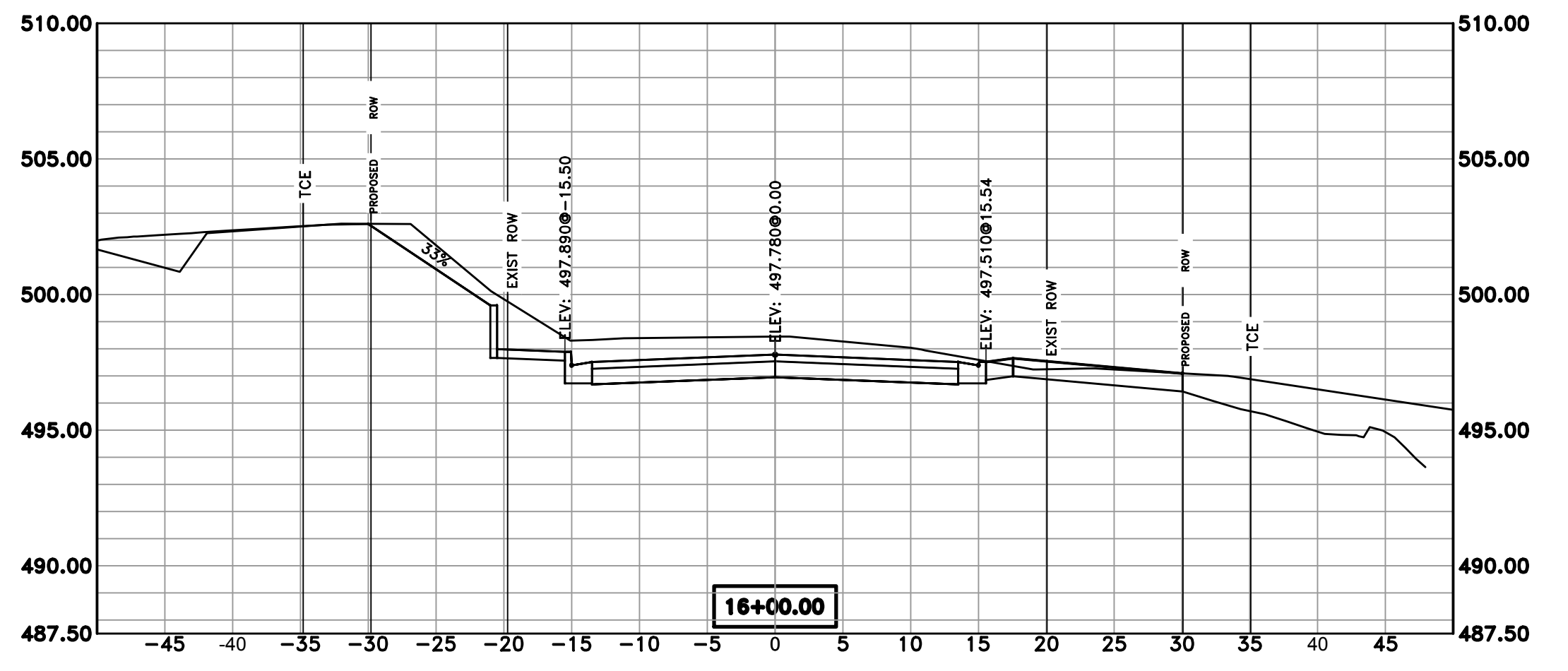
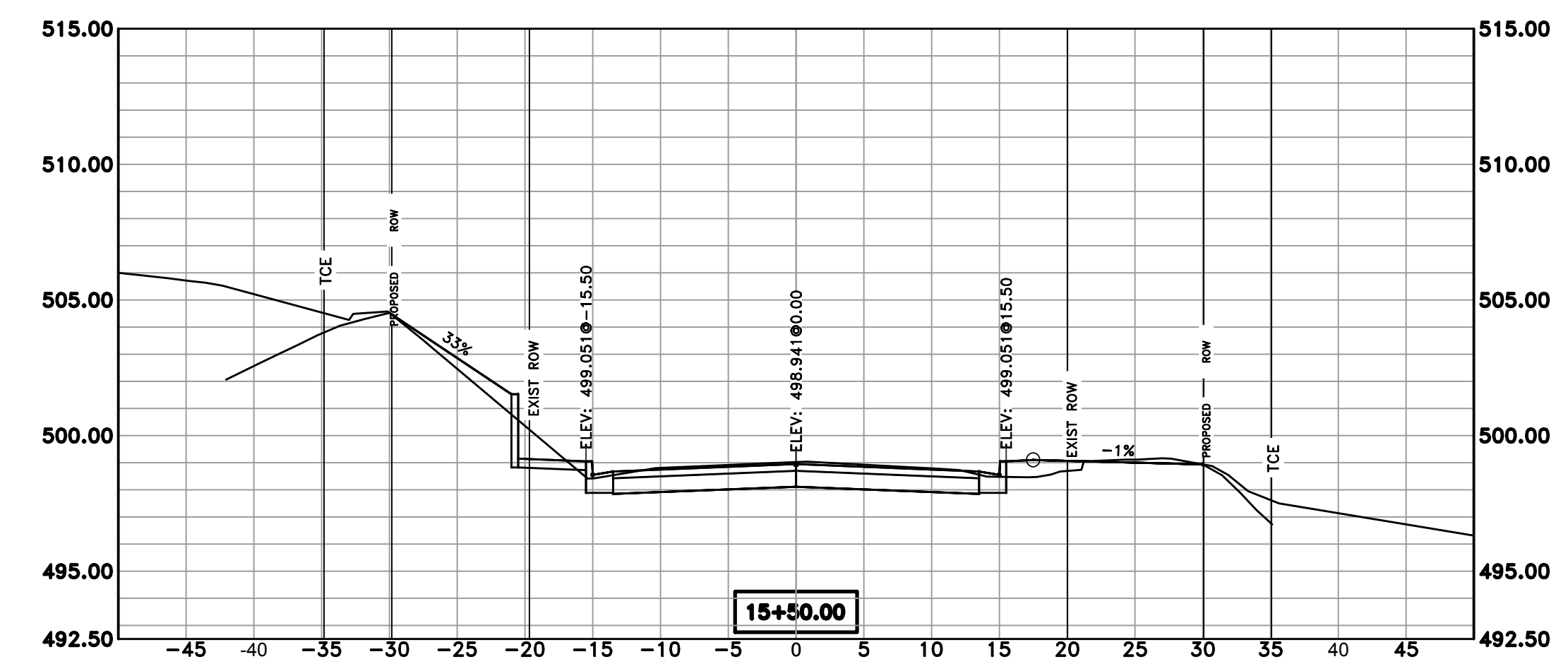
DRAWN BY ZR
DESIGNED RH
CHECKED RH
DATE 03-29-19
SCALE AS NOTED
PROJECT NO. 5-17-ST-224B
SHEET NO. C9

REVISIONS DATE

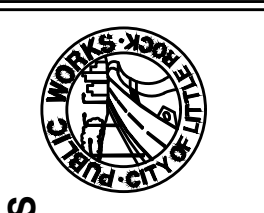
60% SUBMITTAL

CITY OF LITTLE ROCK, ARKANSAS
GAMBLE ROAD IMPROVEMENTS

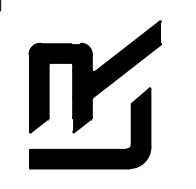
X-SECTIONS 3



SCALE:
1" = 5'V
1" = 10'H



DEPARTMENT OF PUBLIC WORKS
CIVIL ENGINEERING
701 W. MARKHAM
LITTLE ROCK, ARKANSAS 72201



DRAWN BY
ZR

DESIGNED
RH

CHECKED
RH

DATE
03-29-19

SCALE
AS NOTED

PROJECT NO.
5-17-ST-224B

SHEET NO.
C10

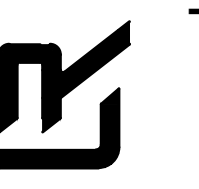
60% SUBMITTAL

CITY OF LITTLE ROCK, ARKANSAS
GAMBLE ROAD IMPROVEMENTS

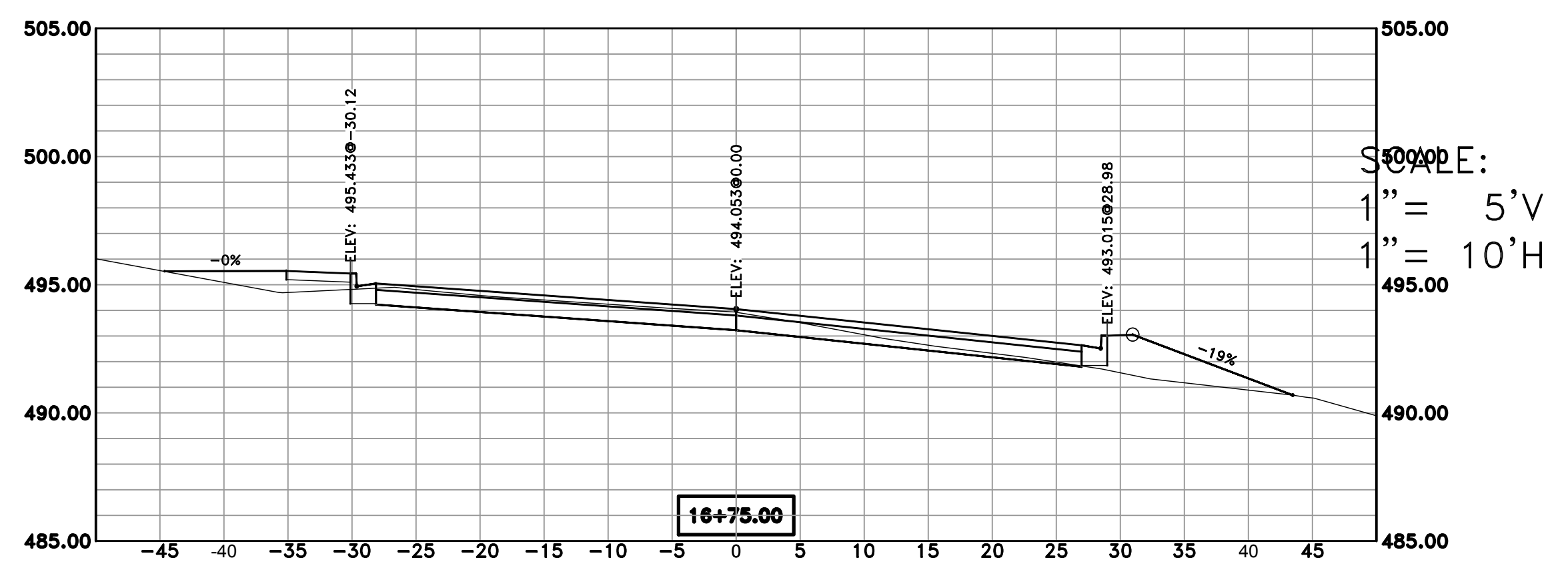
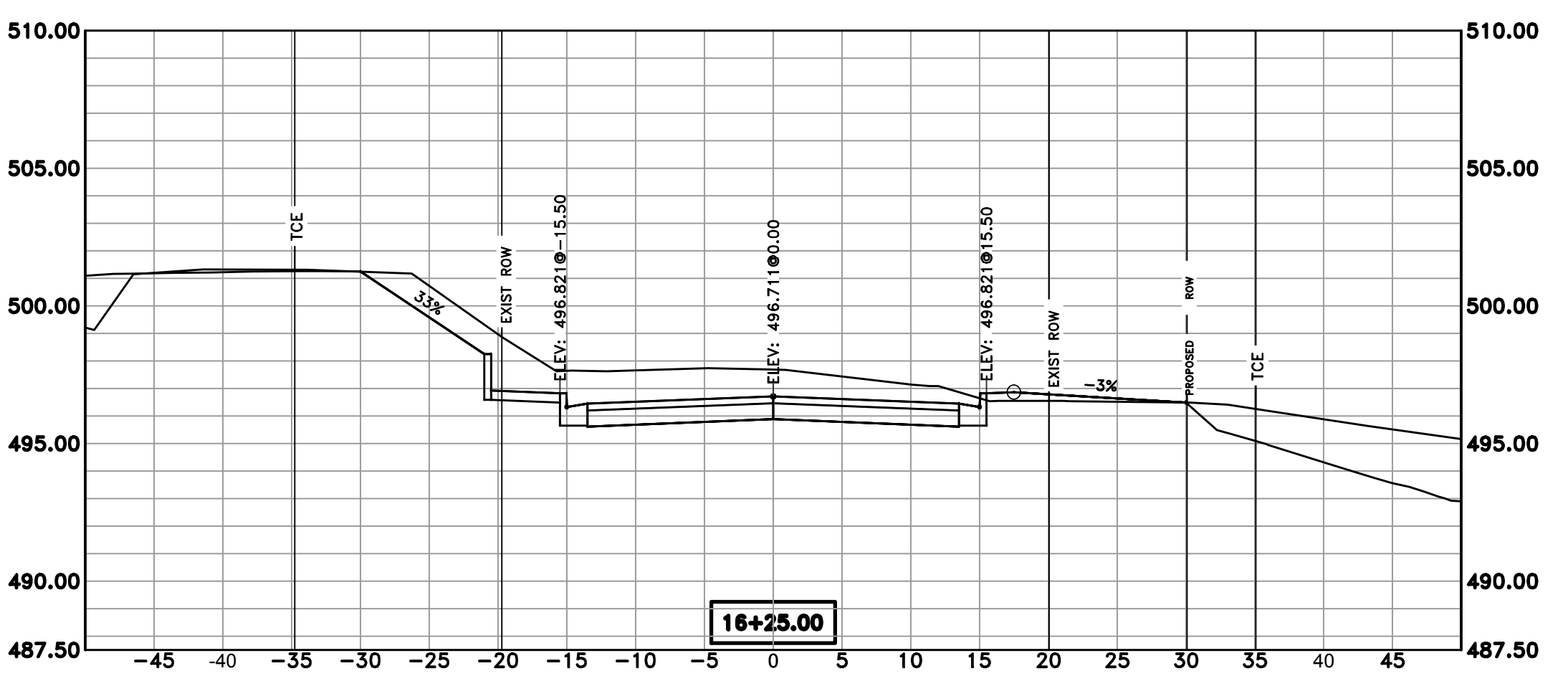
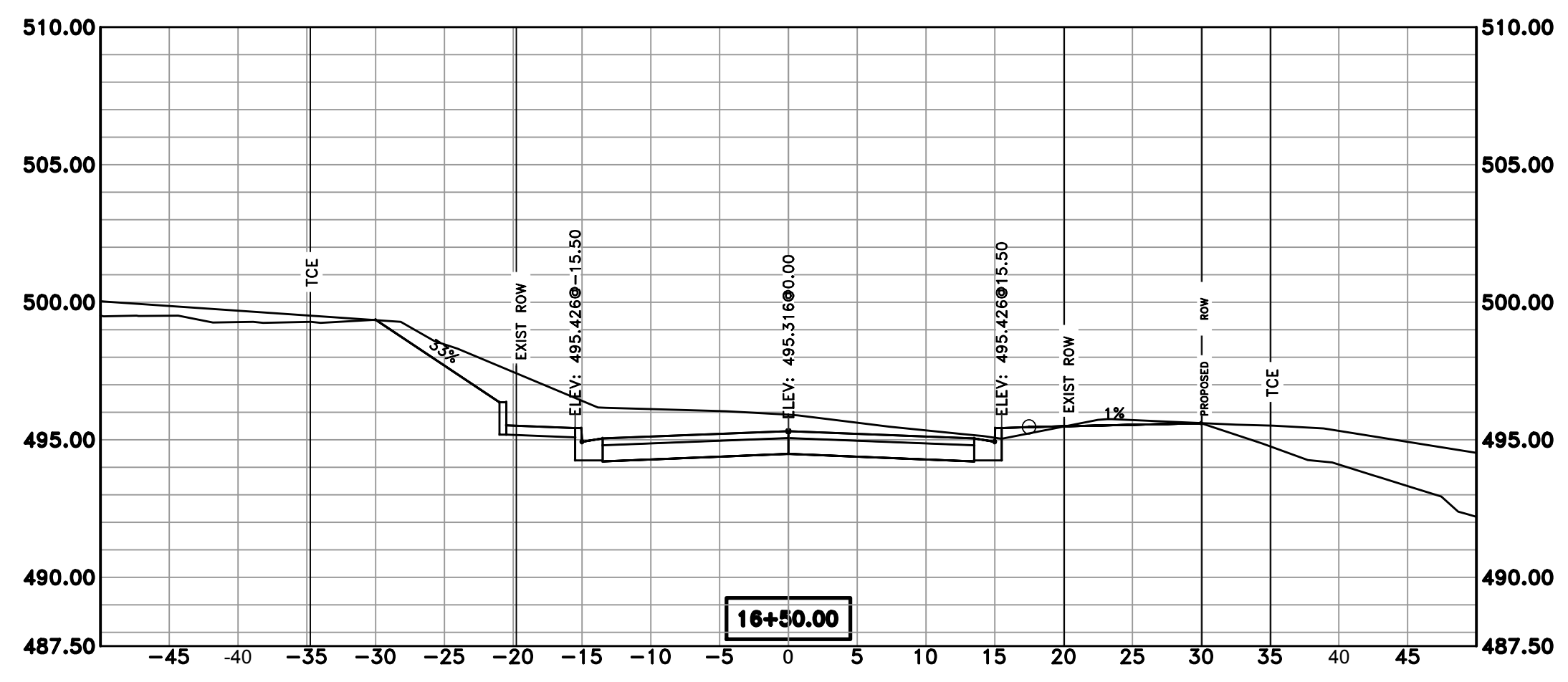
X-SECTIONS 4



DEPARTMENT OF PUBLIC WORKS
 CIVIL ENGINEERING
 701 W. MARKHAM
 LITTLE ROCK, ARKANSAS 72201



DRAWN BY ZR
DESIGNED RH
CHECKED RH
DATE 03-29-19
SCALE AS NOTED
PROJECT NO. 5-17-ST-224B
SHEET NO. C11



SCALE:
 1" = 5' V
 1" = 10' H