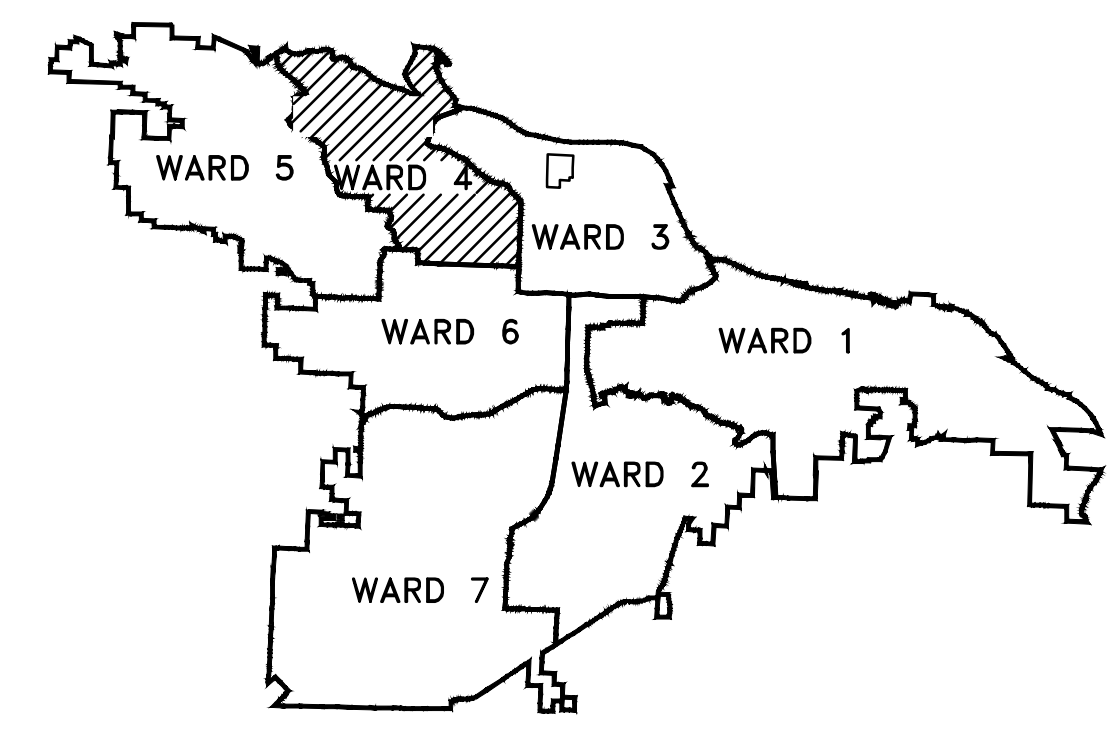


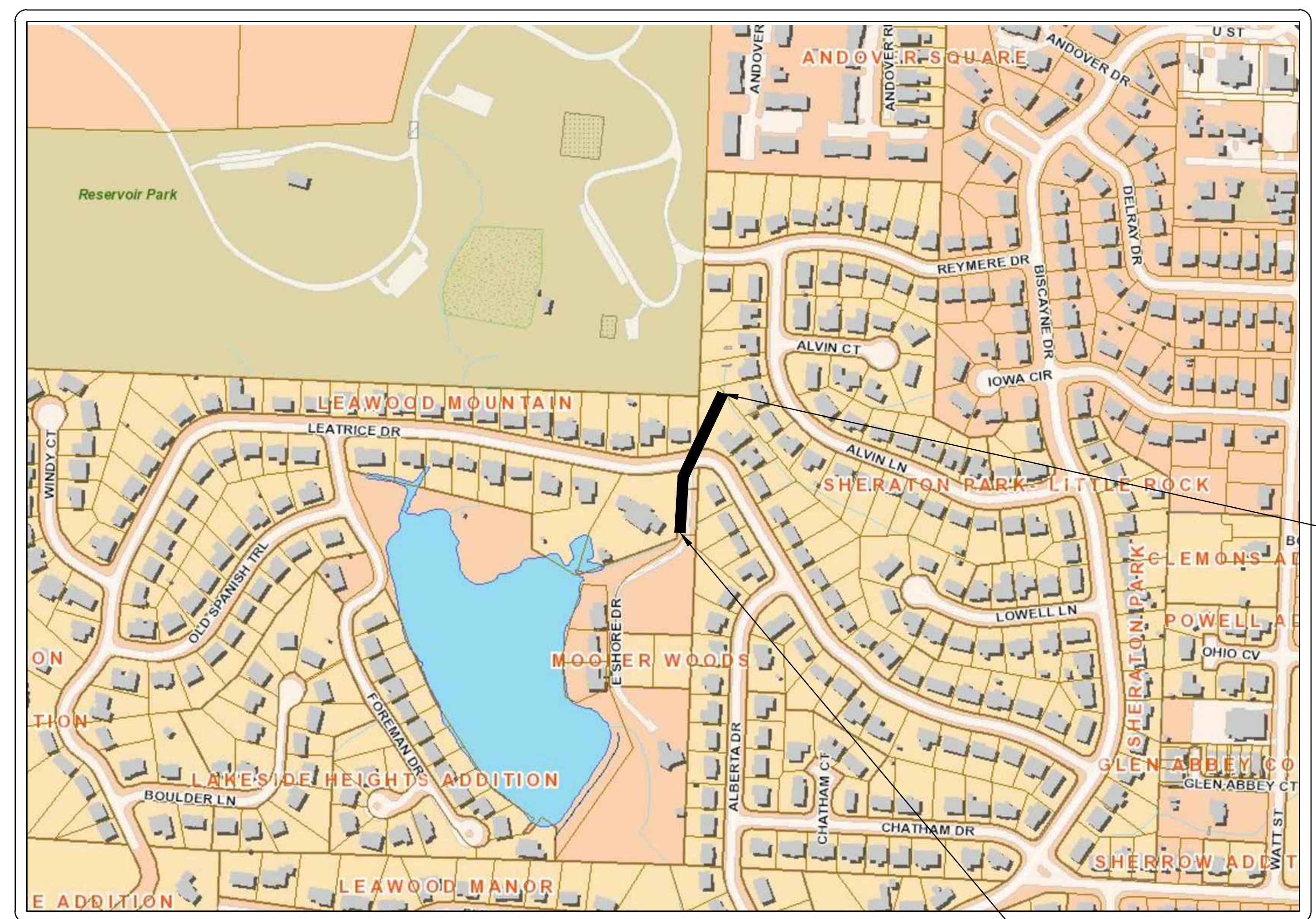
60% SUBMITTAL

CLR PROJECT 04-17-DR-179 LEATRICE DRIVE DRAINAGE IMPROVEMENTS (CROSSING LEATRICE DR. AT E. SHORE DR.)



PROJECT LOCATION - WARD 4

Sheet List Table	
Sheet Number	Sheet Title
C1	COVER SHEET
C2	GENERAL NOTES, LEGEND, AND QUANTITIES
C3	P&P SHEET 1
C4	P&P SHEET 2



LOCATION

PROJECT END STATION 14+62

PROJECT START STATION 10+00

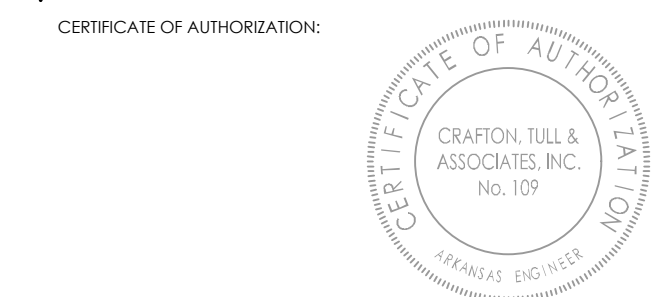


**2019-2021
BOND PROGRAM**

DEPARTMENT OF PUBLIC WORKS
CIVIL ENGINEERING
701 WEST MARKHAM STREET
LITTLE ROCK, ARKANSAS 72201



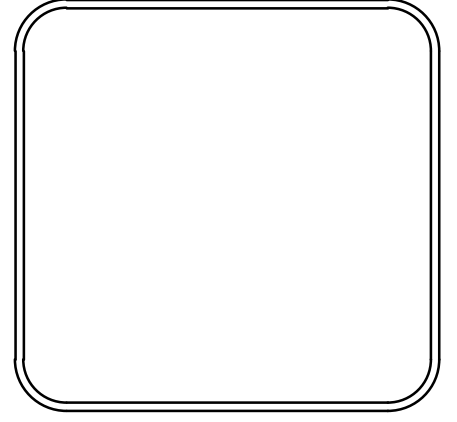
10825 Financial Center Parkway, Suite 300
Little Rock, Arkansas 72211
Crafton Tull
engineering | surveying
501.664.3245 | 501.664.6704
www.craftontull.com



REVISIONS	DATE

CITY OF LITTLE ROCK, ARKANSAS
LEATRICE DRIVE DRAINAGE IMPROVEMENTS
COVER SHEET

DEPARTMENT OF PUBLIC WORKS
CIVIL ENGINEERING
701 W. MARKHAM
LITTLE ROCK, ARKANSAS 72201

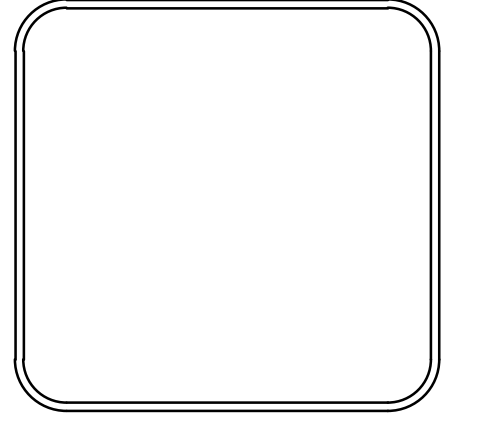


DRAWN BY TH
DESIGNED MLB
CHECKED BAP
DATE 03-21-2019
PROJECT NO. 04-17-DR-179
SHEET NO. C1

REVISIONS	DATE

CITY OF LITTLE ROCK, ARKANSAS
 LEATRICE DRIVE DRAINAGE IMPROVEMENTS
 GENERAL NOTES, LEGEND, AND QUANTITIES

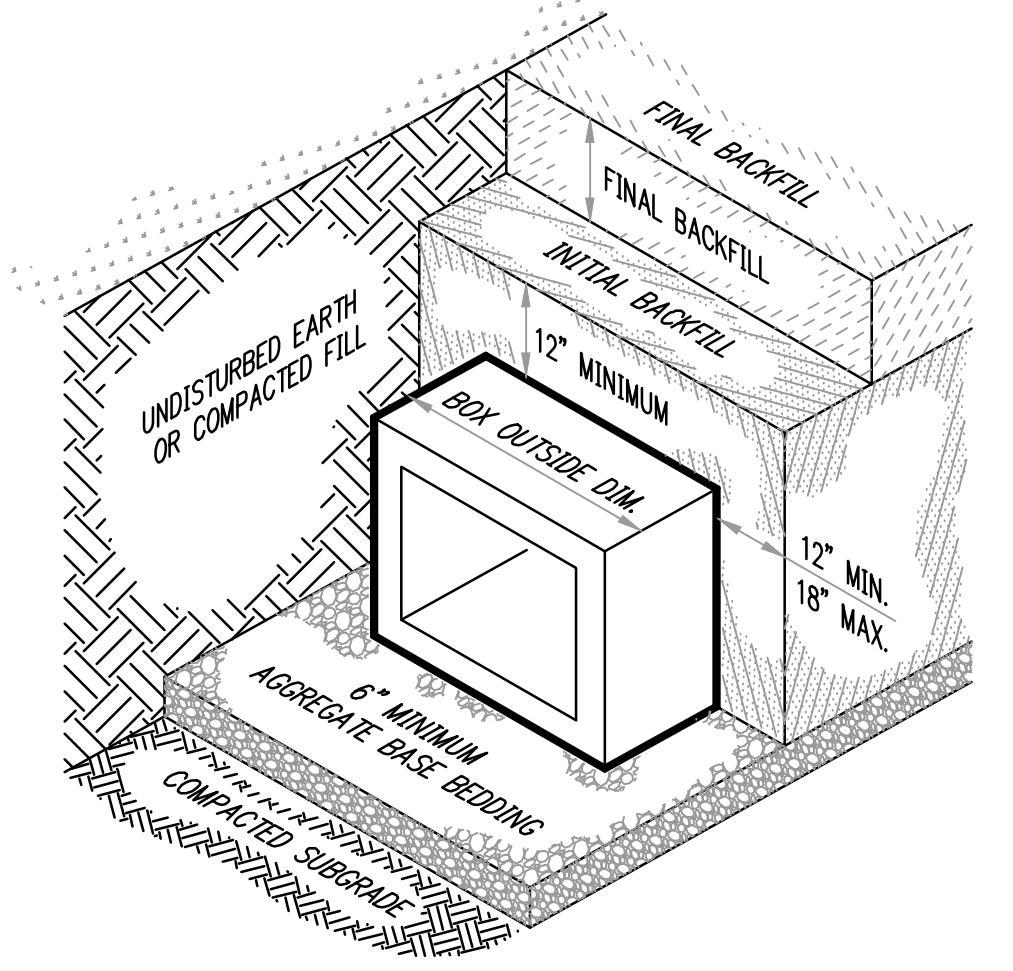
DEPARTMENT OF PUBLIC WORKS
 CIVIL ENGINEERING
 701 W. MARKHAM
 LITTLE ROCK, ARKANSAS 72201



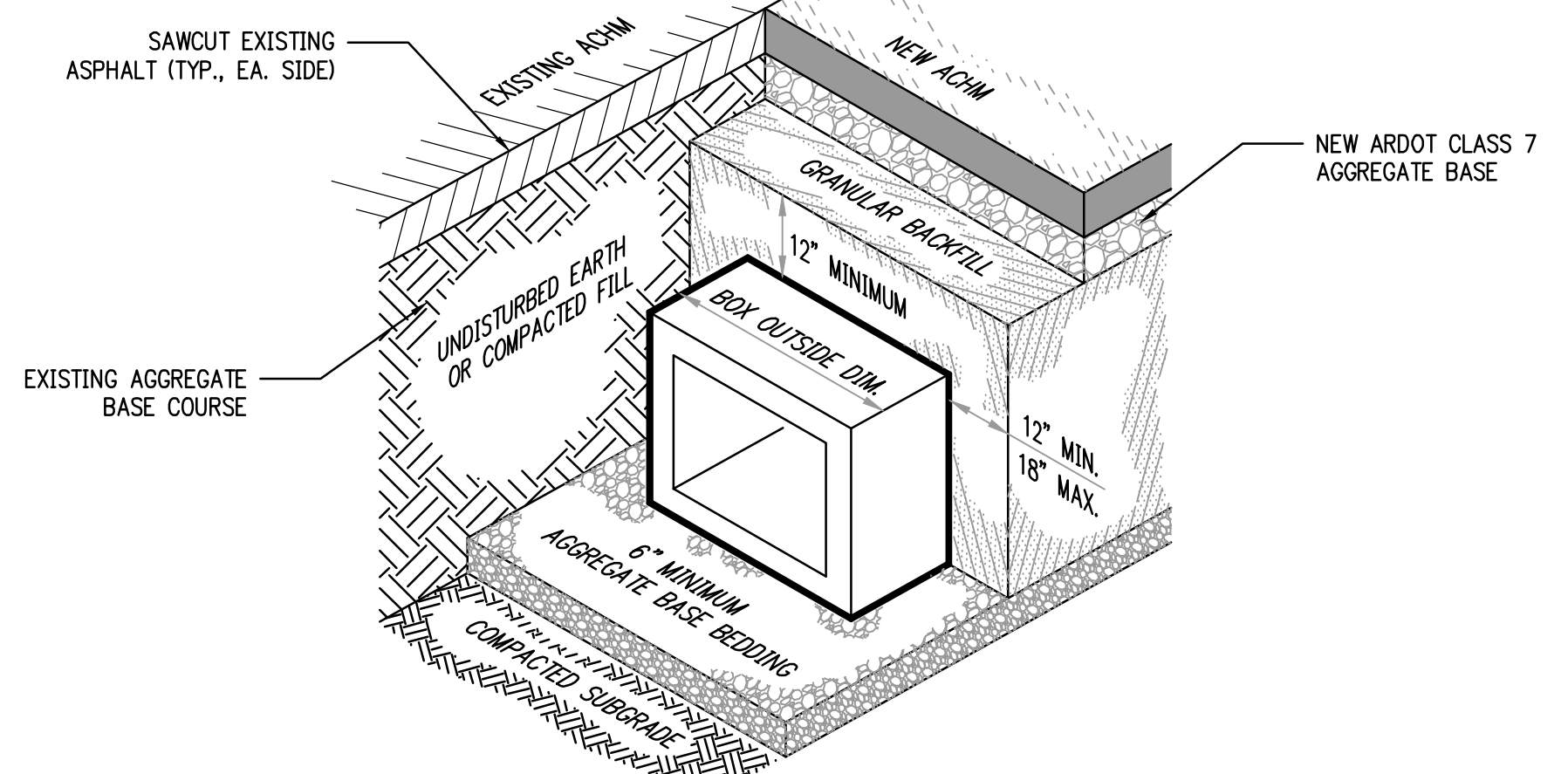
DRAWN BY TH
DESIGNED MLB
CHECKED BAP
DATE 03-21-2019
SCALE
PROJECT NO. 04-17-DR-179
SHEET NO. C2

OPINION OF PROBABLE CONSTRUCTION COSTS - 60%			
CLR PROJECT # 04-17-DR-179			
LEATRICE DRIVE DRAINAGE IMPROVEMENTS			
7/16/2019			
2.01	SITE PREPARATION	1	L.S.
2.02	CLEARING AND GRUBBING TREES	1	L.S.
3.01	UNCLASSIFIED EXCAVATION	60	C.Y.
3.40	TOPSOIL	68	C.Y.
4.01	AGGREGATE BASE COURSE	45	TON
6.01	ACHM SURFACE COURSE	37	TON
7.06	CONCRETE DRIVEWAY (6" THICK), STANDARD FINISH	285	S.F.
7.07	CONCRETE DRIVEWAY (6" THICK), EXPOSED AGGREGATE FINISH	1030	S.F.
7.19	CONCRETE (8" THICK), STREET REPAIR	55	C.Y.
8.03	CONCRETE CURB AND GUTTER (CLASS 3)	46	L.F.
8.16A	DUMPED RIPRAP (GROUTED)	35	C.Y.
10.01	JUNCTION BOX, 6' x 8' BOX	1	EA.
10.05	CURB INLET - 4' x 4' BOX	3	EA.
10.08	CURB INLET - 6' x 9' BOX	1	EA.
10.07	WING 3' EXTENSION	5	EA.
11.01A	BOX CULVERT, 6' x 3' SIDE DRAIN	80	L.F.
11.01A	BOX CULVERT, 6' x 3' CROSS DRAIN	66	L.F.
11.01B	BOX CULVERT, 6' x 4' CROSS DRAIN	153	L.F.
11.06	REINFORCED CONCRETE HEADWALL	8.3	C.Y.
13.18C	STORM DRAIN PIPE, 18" CROSS DRAIN	23	L.F.
13.42C	STORM DRAIN PIPE, 42" SIDE DRAIN	116	L.F.
14.01	SOLID SODDING (BERMUDA)	405	S.Y.
16.01	MAINTENANCE OF TRAFFIC	1	L.S.
18.01	FENCE, 6' WOOD	65	L.F.
19.01	CLEAN UP	1	L.S.
24.06	SEDIMENT BARRIER, SILT FENCE (SD1)	4	EA.
24.11	SILT FENCE - TYPE A (SFA)	107	L.F.
26.10	TRENCH & EXCAVATION SAFETY	1	L.S.
29.10	PROJECT INFORMATION KIOSK (PW-18)	1	EA.

- BOX CULVERT INSTALLATION NOTES:**
- INITIAL BACKFILL IN NON-PAVEMENT AREAS SHALL BE COMPACTED TO 95% STANDARD PROCTOR.
 - INITIAL BACKFILL IN PAVEMENT AREAS SHALL TO 95% MODIFIED PROCTOR.
 - IN PAVEMENT AREAS, FINAL BACKFILL SHALL BE PER TYPICAL PAVEMENT SECTION.
 - ALL MATERIALS ARE CLASSIFIED IN ACCORDANCE WITH ASTM D 2321-LATEST EDITION.
 - ALL MATERIALS SHALL BE INSTALLED IN MAXIMUM 6" LOOSE LIFTS IN ACCORDANCE WITH ASTM D698. MATERIALS SHALL BE COMPACTED NEAR OPTIMUM MOISTURE CONTENT.
 - FILL, SALVAGED FROM EXCAVATION, SHALL BE FREE OF DEBRIS, ORGANICS AND ROCKS LARGER THAN 2".
 - ALL TRENCH EXCAVATIONS SHALL BE SLOPED, SHORED, SHEETED, BRACED OR OTHERWISE SUPPORTED IN COMPLIANCE WITH CURRENT OSHA REGULATIONS AND LOCAL ORDINANCES.

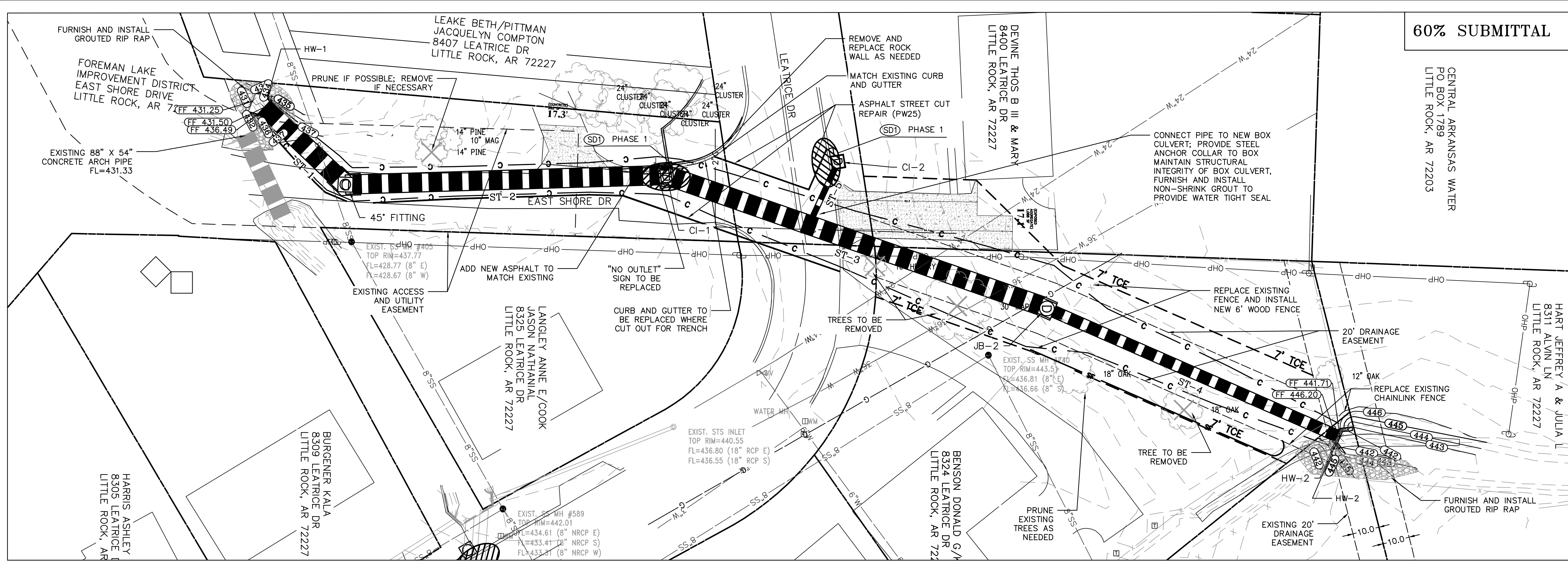


CONCRETE BOX CULVERT INSTALLATION & BACKFILL
NTS



CONCRETE BOX CULVERT INSTALLATION BENEATH PAVEMENT SECTION
NTS

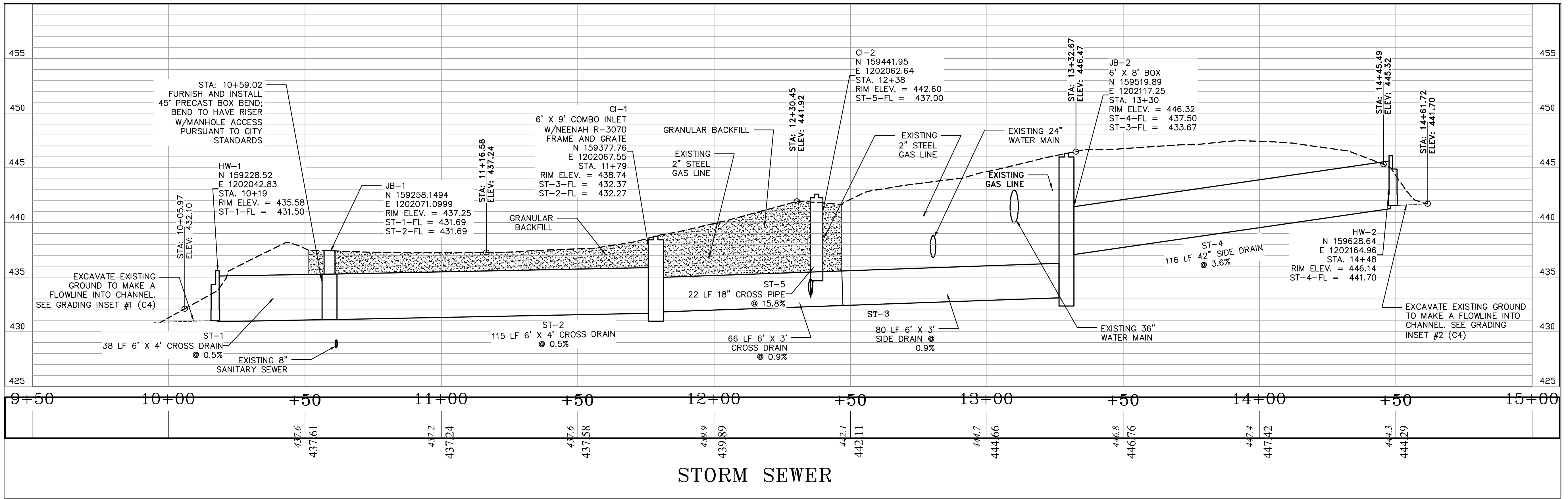
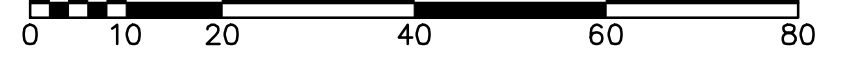
EXISTING	PROPOSED
IRON ROD	PROPOSED CONTOUR
PK NAIL	PROPOSED SPOT ELEVATION
R.R. SPIKE	PROPOSED SPOT CURB ELEVATION
CONC. MONUMENT	STORM SEWER - PIPE
WATER VALVE	STORM SEWER - MITERED END SECTION
WATER METER	STORM SEWER - GRATE INLET
FIRE HYDRANT	STORM SEWER - JUNCTION BOX
GAS METER	STORM SEWER - FLARED END SECTION
GAS VALVE	STORM SEWER - HEADWALL
CLEAN-OUT	STORM SEWER - SINGLE WING
GUARD POST (BOLLARD)	STORM SEWER - DOUBLE WING
SIGN POST	STORM SEWER - AREA INLET
BENCHMARK	GRADE BREAK LINE
STORM SEWER MANHOLE	HIGH POINT
SANITARY SEWER MANHOLE	LOW POINT
TELEPHONE MANHOLE	CUT LINE
ELECTRIC MANHOLE	FILL LINE
TELEPHONE BOX	SANITARY SEWER PIPE
ELECTRIC BOX	SANITARY SEWER MANHOLE
CABLE BOX	PROPOSED CURB
UTILITY POLE	PROPOSED CONCRETE
GUY WIRE	CONSTRUCTION - ENTRANCE/EXIT
LIGHT POLE	CHECK DAM
POST OR POLE (TYPE AS NOTED)	DIVERSION BERM
MAILBOX	DOWNDRAIN STRUCTURE - TEMPORARY
DECIDUOUS TREE	ROCK DAM
EVERGREEN/CONIFEROUS TREE	SEDIMENT BARRIER - SILT FENCE
BUSH	SEDIMENT BARRIER - GRAVEL RING
PROPERTY LINE	SEDIMENT BARRIER - BLOCK & GRAVEL
SETBACK LINE	SEDIMENT BARRIER - BLOCK
EASEMENT LINE	TEMPORARY SEDIMENT BASIN
CURB	SILT FENCE - TYPE A
FENCE	SILT FENCE - TYPE B
OVERHEAD ELECTRIC	SILT FENCE - TYPE C
OVERHEAD TELEPHONE	STORM DRAIN OUTLET PROTECTION
OVERHEAD CABLE	SURFACE ROUGHENING
UNDERGROUND TELEPHONE	DISTURBED AREA STABILIZATION -TEMPORARY STABILIZATION
UNDERGROUND ELECTRIC	DISTURBED AREA STABILIZATION -TEMPORARY GRASSING
UNDERGROUND CABLE	DISTURBED AREA STABILIZATION -PERMANENT GRASSING
WATER LINE	MATTING/BLANKETS
SEWER LINE	
GAS LINE	
STORM SEWER/CULVERT	
EDGE OF WOODS	
CONTOUR LINE	



60% SUBMITTAL

CENTRAL ARKANSAS WATER
PO. BOX 1789
LITTLE ROCK, AR 72203

GRAPHIC SCALE



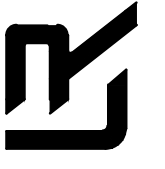
STORM SEWER

REVISIONS DATE

CITY OF LITTLE ROCK, ARKANSAS
LEATRICE DRIVE DRAINAGE IMPROVEMENTS

P & P SHEET 1

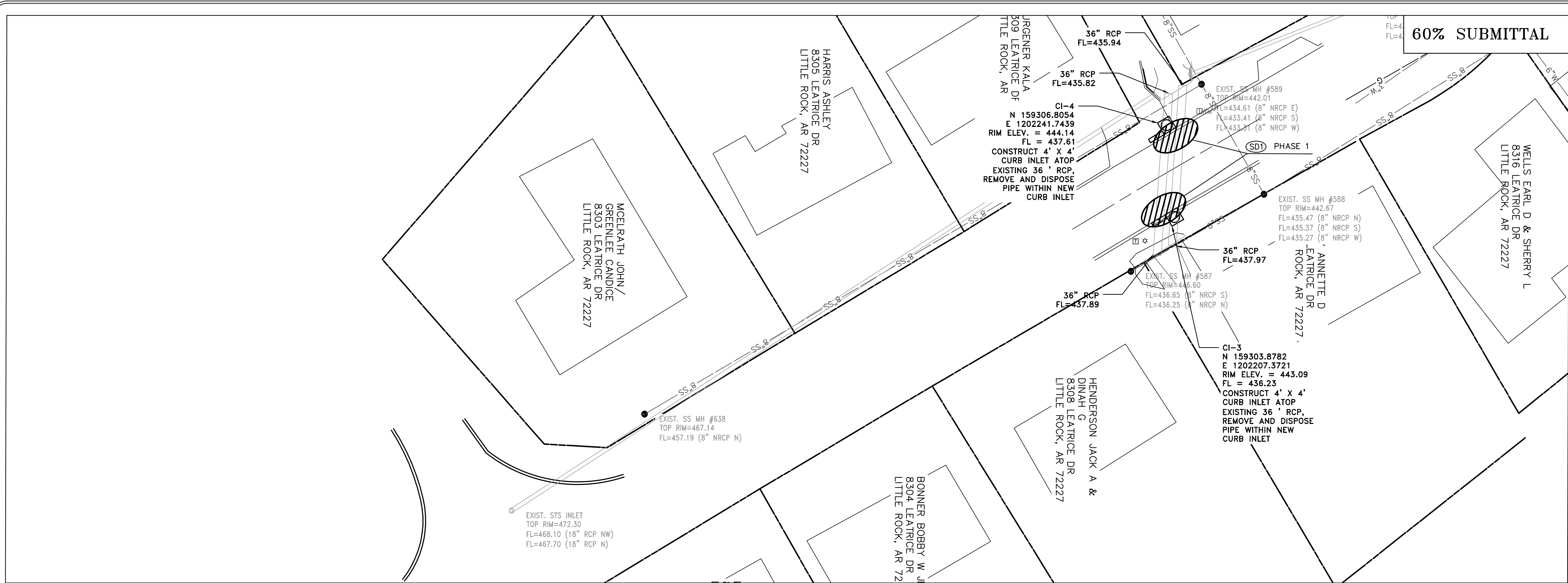
DEPARTMENT OF PUBLIC WORKS
CIVIL ENGINEERING
701 W. MARKHAM



LITTLE ROCK, ARKANSAS 72201

DRAWN BY
TH
DESIGNED
MLB
CHECKED
BAP
DATE
03-21-2019
SCALE
H: 1"=20'
V: 1"=5'
PROJECT NO.
04-17-DR-179
SHEET NO.

C3

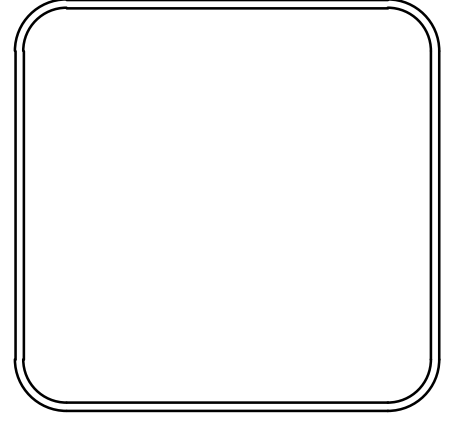


60% SUBMITTAL

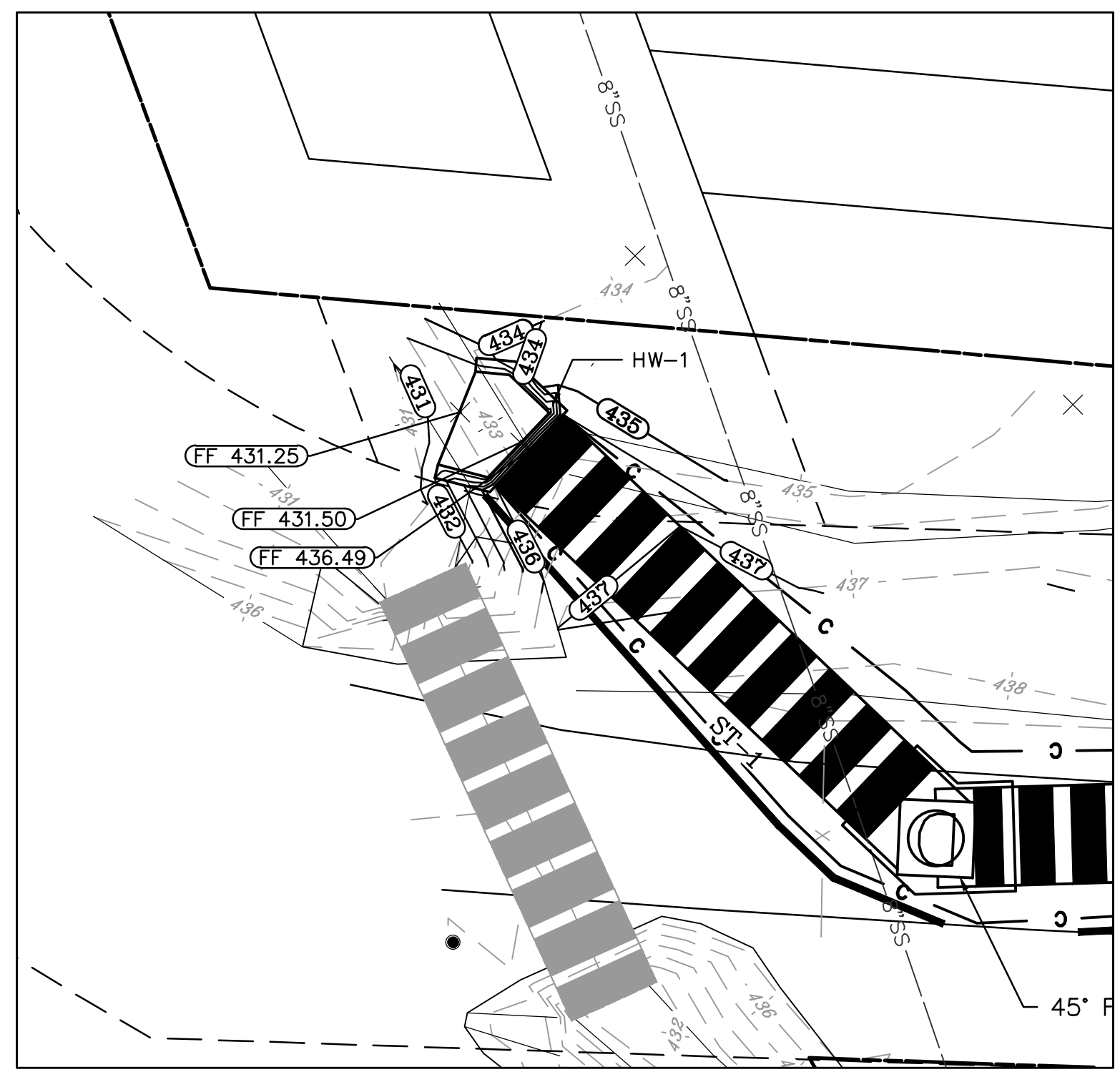
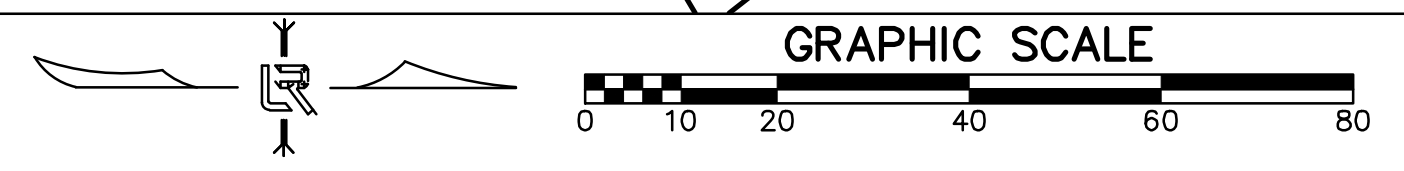
REVISIONS	DATE

CITY OF LITTLE ROCK, ARKANSAS
LEATRICE DRIVE DRAINAGE IMPROVEMENTS
P & P SHEET 2

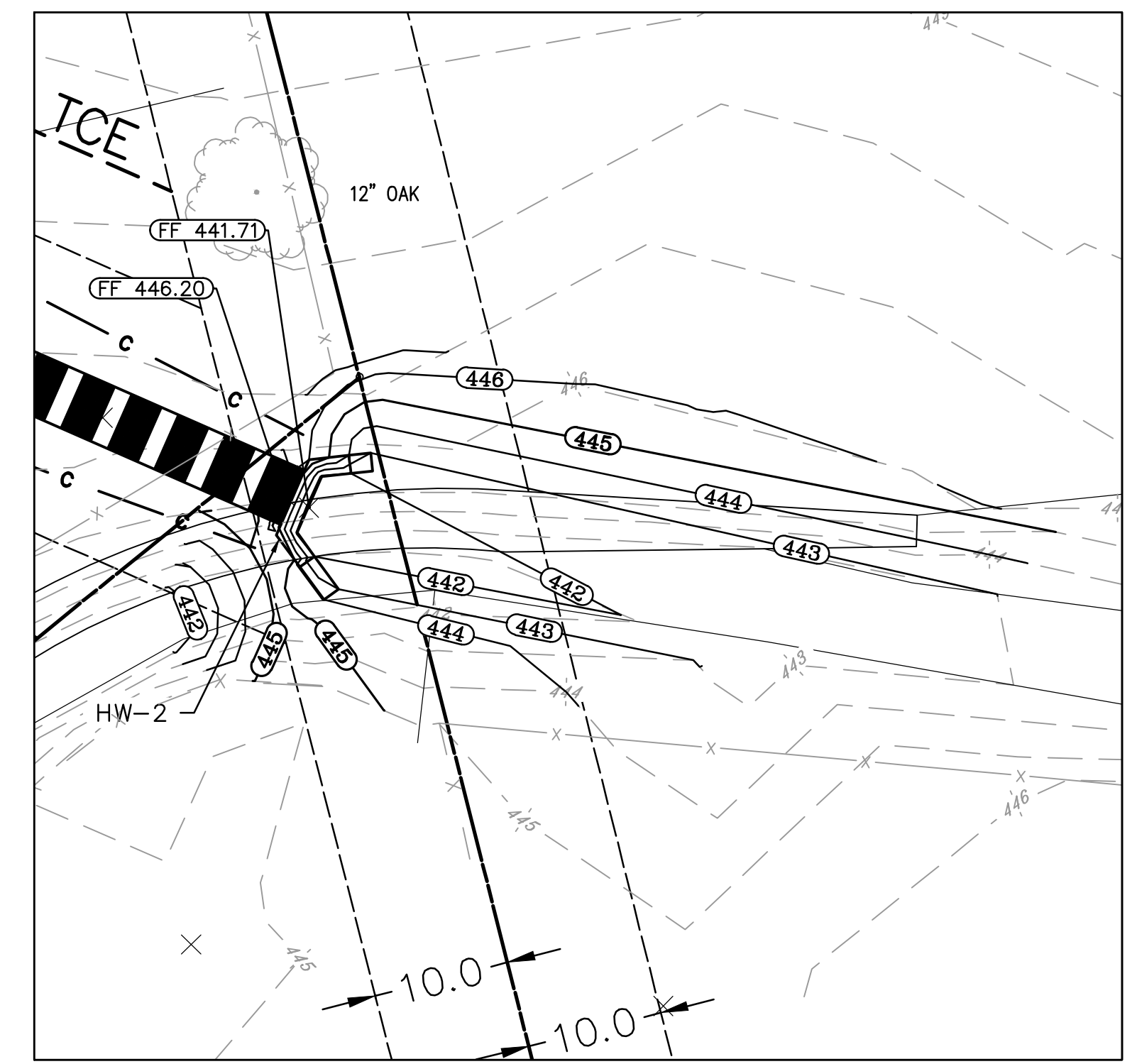
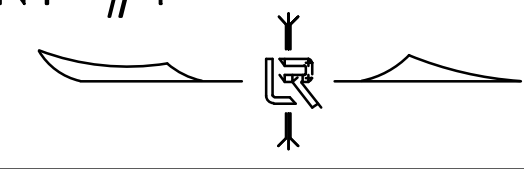
DEPARTMENT OF PUBLIC WORKS
CIVIL ENGINEERING
701 W. MARKHAM
LITTLE ROCK, ARKANSAS 72201



DRAWN BY	TH
DESIGNED	MLB
CHECKED	BAP
DATE	03-21-2019
SCALE	H: 1"=20' V: 1"=5'
PROJECT NO.	04-17-DR-179
SHEET NO.	C4



GRADING SUPPLIMENT #1
SCALE 1:10



GRADING SUPPLIMENT #2
SCALE 1:10

