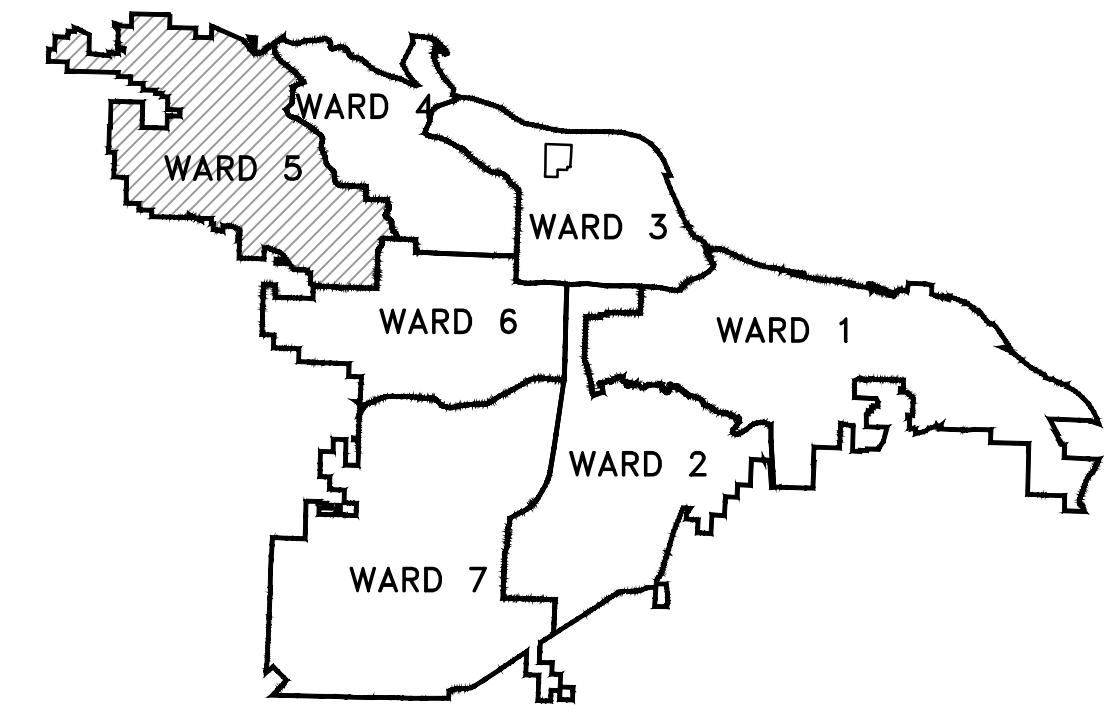


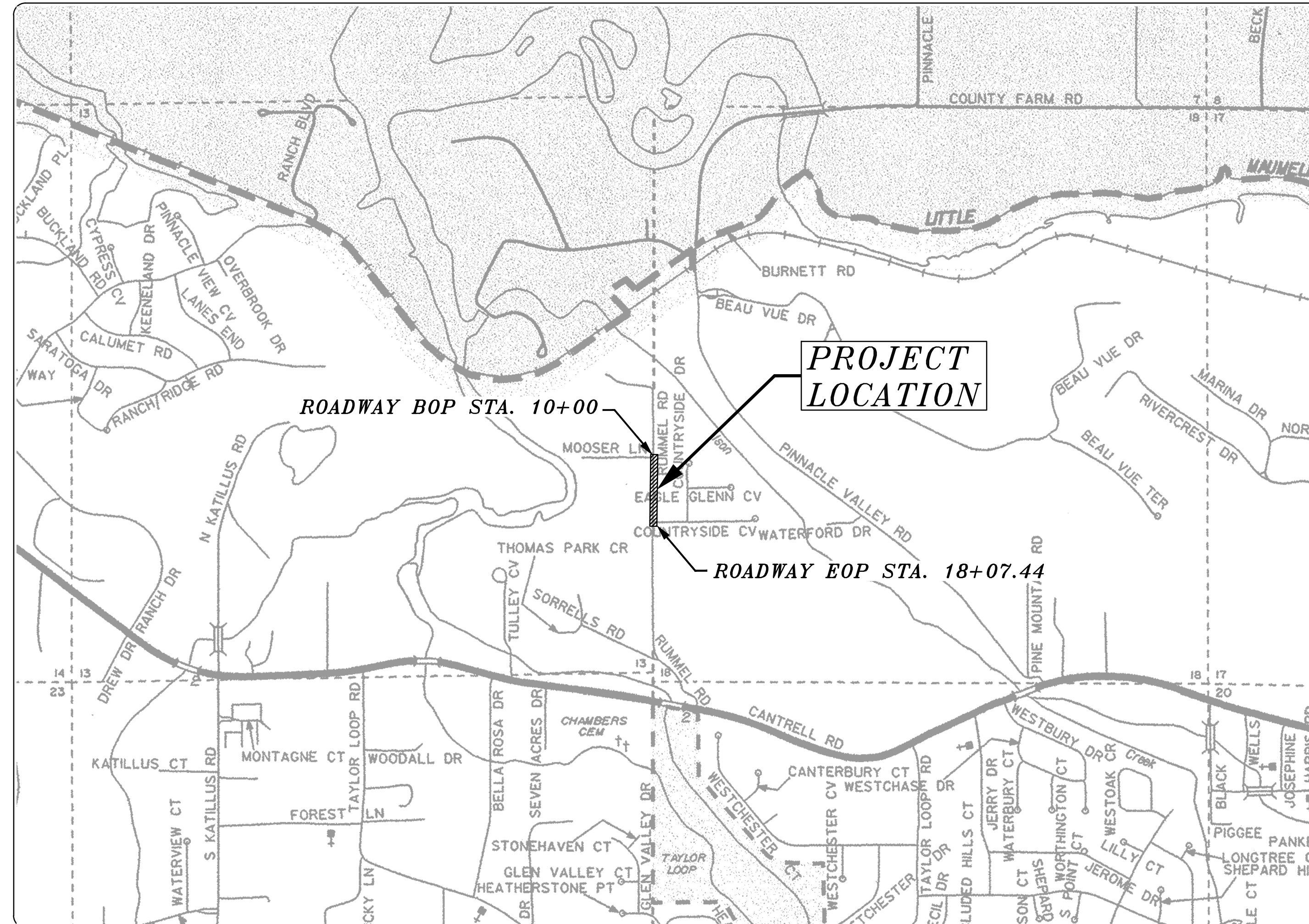
JOB #05-16-ST-224

RUMMEL ROAD IMPROVEMENTS (MOOSER LANE TO COUNTRYSIDE CV.) LITTLE ROCK, ARKANSAS



PROJECT LOCATION - WARD 5

SHEET NO.	TITLE
C1	COVER SHEET
C2	LEGEND AND QUANTITIES
C3	TYPICAL SECTION
C4	TYPICAL SECTION MOT
C5	TOPOGRAPHIC SURVEY
C6	EROSION CONTROL PLAN
C7	PLAN AND PROFILE
C8	PLAN AND PROFILE
C9	MAINTENANCE OF TRAFFIC STAGE 1
C10	MAINTENANCE OF TRAFFIC STAGE 2
C11	CROSS SECTIONS
C12	CROSS SECTIONS

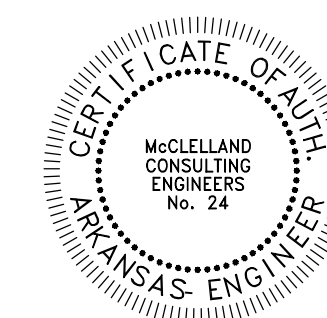


PRELIMINARY
SUBJECT TO REVISION
60% SUBMITTAL 6/14/19

DEPARTMENT OF PUBLIC WORKS
CIVIL ENGINEERING
701 WEST MARKHAM STREET
LITTLE ROCK, ARKANSAS 72201



Know what's below.
Call before you dig.



MCE McCLELLAND
CONSULTING
ENGINEERS, INC.
DESIGNED TO SERVE

7302 Kanis Rd.
Little Rock, AR 72204
PH# 501-371-0272

<http://www.mce.us.com>

REVISIONS DATE

CITY OF LITTLE ROCK, ARKANSAS
RUMMEL ROAD IMPROVEMENTS

COVER SHEET

DEPARTMENT OF PUBLIC WORKS
CIVIL ENGINEERING
701 W. MARKHAM



LITTLE ROCK, ARKANSAS 72201

ORIGINAL SIGNATURE ON FILE

DRAWN BY
JAM
DESIGNED
JJW
CHECKED
MK

DATE
06/14/2019
SCALE
NTS

PROJECT NO.
05-16-ST-224

SHEET NO.
C1

W:\2018\18-5821 City of Little Rock, Rummel Rd. Reconstruction\Design Drawings\18-5821-CVR.dwg 6/14/19 at 7:43am

QUANTITIES

Item No.	CLR Item No.	Description	Unit	Estimated Quantity
1	2.01	Site Preparation	LUMP SUM	1
2	3.01	Unclassified Excavation	CU.YD.	240
3	3.07	Compacted Embankment	CU.YD.	380
4	4.01	Aggregate Base Course (Class 7)	TON	645
5	5.01	Tack Coat	GAL	100
6	6.01	ACHM Surface Course	TON	165
7	6.02	ACHM Binder Course	TON	30
8	7.04	Concrete Driveway (6" Thick)	SQ. FT.	1,060
9	8.01	Concrete Curb and Gutter (Class 3)	LIN. FT.	740
10	10.01	Junction Box	EA	1
11	10.04	Curb Inlets	EA	2
12	10.07	Wing 3' Extension	EA	2
13	11.05	Reinforced Concrete Precast Headwall	EA	1
14	13.18C	Side Drain	LIN. FT.	835
15	13.63	Concrete Plug on Existing Storm Drain	EA	2
16	14.01	Solid Sodding, Bermuda	SQ. YD.	850
17	16.01	Maintenance of Traffic	LUMP SUM	1
18	22.01	Mailbox Relocation	EA	12
19	24.02	Check Dam (CD)	CU.YD.	17
20	24.06	Sediment Barrier, Silt Fence (SD1)	EA	2
21	26.01	Trench or Excavation Safety Systems	LUMP SUM	1
22	27.01	Cold Milling Asphalt Pavement	SQ. YD.	622
23	605	Concrete Ditch Paving	SQ.YD	8
24	606.18C	Flared End Section 18" RCP	EA	1

LEGEND

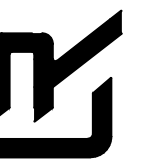
EXISTING	PROPOSED
○ IR IRON ROD	PROPOSED CONTOUR
○ PK PK NAIL	PROPOSED SPOT ELEVATION
○ RR(Sp) R.R. SPIKE	PROPOSED SPOT CURB ELEVATION
□ CM CONC. MONUMENT	— — — — GRADE BREAK LINE
⊗ WV WATER VALVE	HP HIGH POINT
□ WM WATER METER	LP LOW POINT
⊕ FH FIRE HYDRANT	— C CUT LINE
⊕ GM GAS METER	— F FILL LINE
⊕ GV GAS VALVE	— SS SANITARY SEWER PIPE
○ CO CLEAN-OUT	○ S SANITARY SEWER MANHOLE
● GP GUARD POST (BOLLARD)	— — — — PROPOSED CURB
⊕ SIGN POST	— — — — PROPOSED CONCRETE
⊕ BENCHMARK	— — — — PROPOSED ASPHALT
○ D STORM SEWER MANHOLE	PROPOSED RIP-RAP
○ S SANITARY SEWER MANHOLE	— — — — CONSTRUCTION - ENTRANCE/EXIT
○ T TELEPHONE MANHOLE	— — — — CHECK DAM
○ E ELECTRIC MANHOLE	— — — — DIVERSION BERM
□ EB TELEPHONE BOX	— — — — DOWNDRAIN STRUCTURE - TEMPORARY
□ EB ELECTRIC BOX	— — — — ROCK DAM
□ CB CABLE BOX	— — — — SEDIMENT BARRIER - SILT FENCE
⊕ UP UTILITY POLE	— — — — SEDIMENT BARRIER - GRAVEL RING
⊕ GUY WIRE	— — — — SEDIMENT BARRIER - BLOCK & GRAVEL
⊕ LIGHT POLE	— — — — SEDIMENT BARRIER - BLOCK
⊕ POST OR POLE (TYPE AS NOTED)	— — — — TEMPORARY SEDIMENT BASIN
⊕ MAILBOX	— — — — SILT FENCE - TYPE A
⊕ DECIDUOUS TREE	— — — — SILT FENCE - TYPE B
⊕ EVERGREEN/CONIFEROUS TREE	— — — — SILT FENCE - TYPE C
⊕ BUSH	— — — — STORM DRAIN OUTLET PROTECTION
— — — — PROPERTY LINE	— — — — SURFACE ROUGHENING
— — — — SETBACK LINE	— — — — DISTURBED AREA STABILIZATION - TEMPORARY STABILIZATION
— — — — EASEMENT LINE	— — — — DISTURBED AREA STABILIZATION - TEMPORARY GRASSING
— — — — CURB	— — — — DISTURBED AREA STABILIZATION - PERMANENT GRASSING
— X — X — X — FENCE	— — — — MATTING/BLANKETS
— OE — OE — OE — OVERHEAD ELECTRIC	
— OT — OT — OT — OVERHEAD TELEPHONE	
— OC — OC — OC — OVERHEAD CABLE	
— UGT — UNDERGROUND TELEPHONE	
— UGE — UNDERGROUND ELECTRIC	
— UGC — UNDERGROUND CABLE	
— 8"W — WATER LINE	
— 8"SS — SEWER LINE	
— 4"G — GAS LINE	
— 24" CMP/RCP/DIP — STORM SEWER/CULVERT	
— — — — EDGE OF WOODS	
— — — — CONTOUR LINE	

REVISIONS DATE

CITY OF LITTLE ROCK, ARKANSAS
RUMMEL ROAD IMPROVEMENTS

LEGEND AND QUANTITIES

DEPARTMENT OF PUBLIC WORKS
CIVIL ENGINEERING
701 W. MARKHAM
LITTLE ROCK, ARKANSAS 72201



DRAWN BY

JAM

DESIGNED

JJW

CHECKED

MK

DATE

06/14/2019

SCALE

NTS

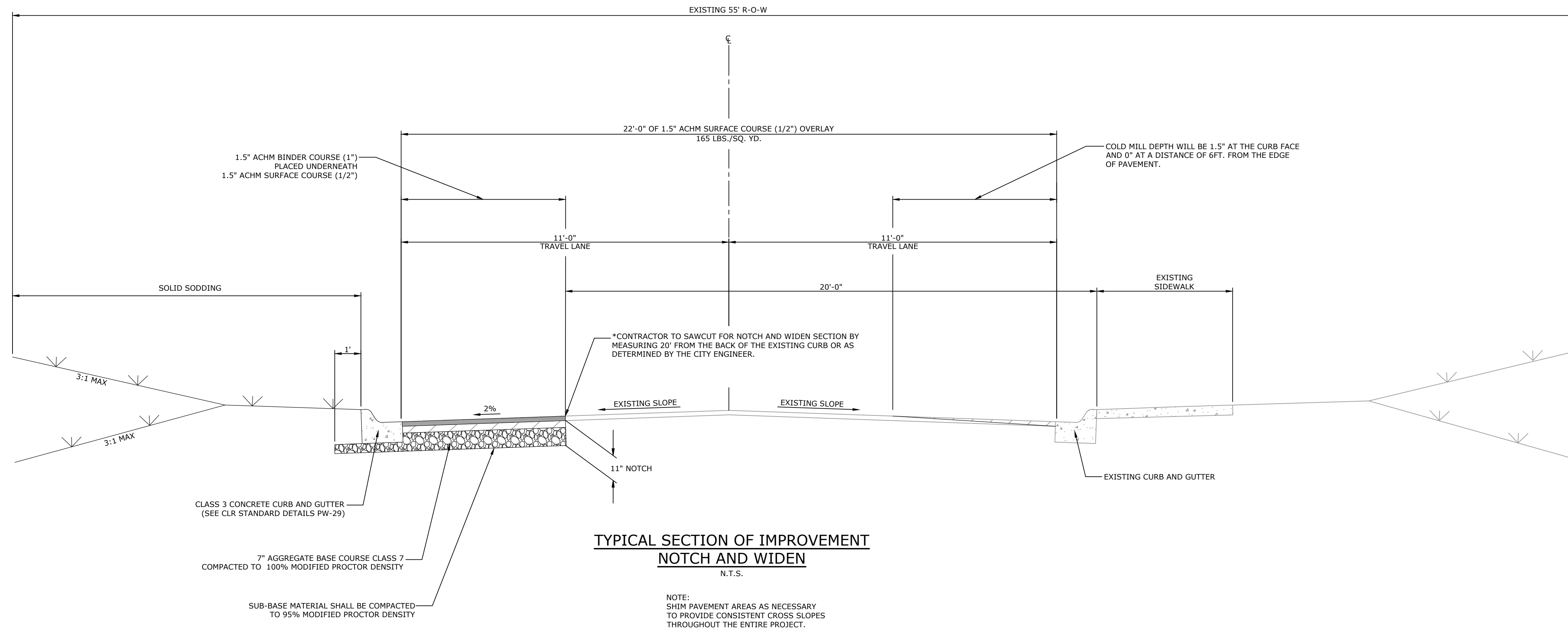
PROJECT NO.

05-16-ST-224

SHEET NO.

C2

W:\2018\18-5821-City of Little Rock, Rummel Rd. Reconstruction\Design Drawings\18-5821-TYP SECTIONS.dwg 6/13/19 at 12:18pm



REVISIONS	DATE

CITY OF LITTLE ROCK, ARKANSAS
RUMMEL ROAD IMPROVEMENTS
TYPICAL SECTION

DEPARTMENT OF PUBLIC WORKS
CIVIL ENGINEERING
701 W. MARKHAM
LITTLE ROCK, ARKANSAS 72201

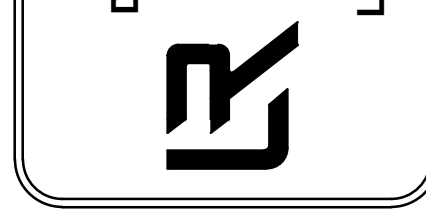


DRAWN BY JAM
DESIGNED JJW
CHECKED MK
DATE 06/14/2019
SCALE NTS
PROJECT NO. 05-16-ST-224
SHEET NO. C3

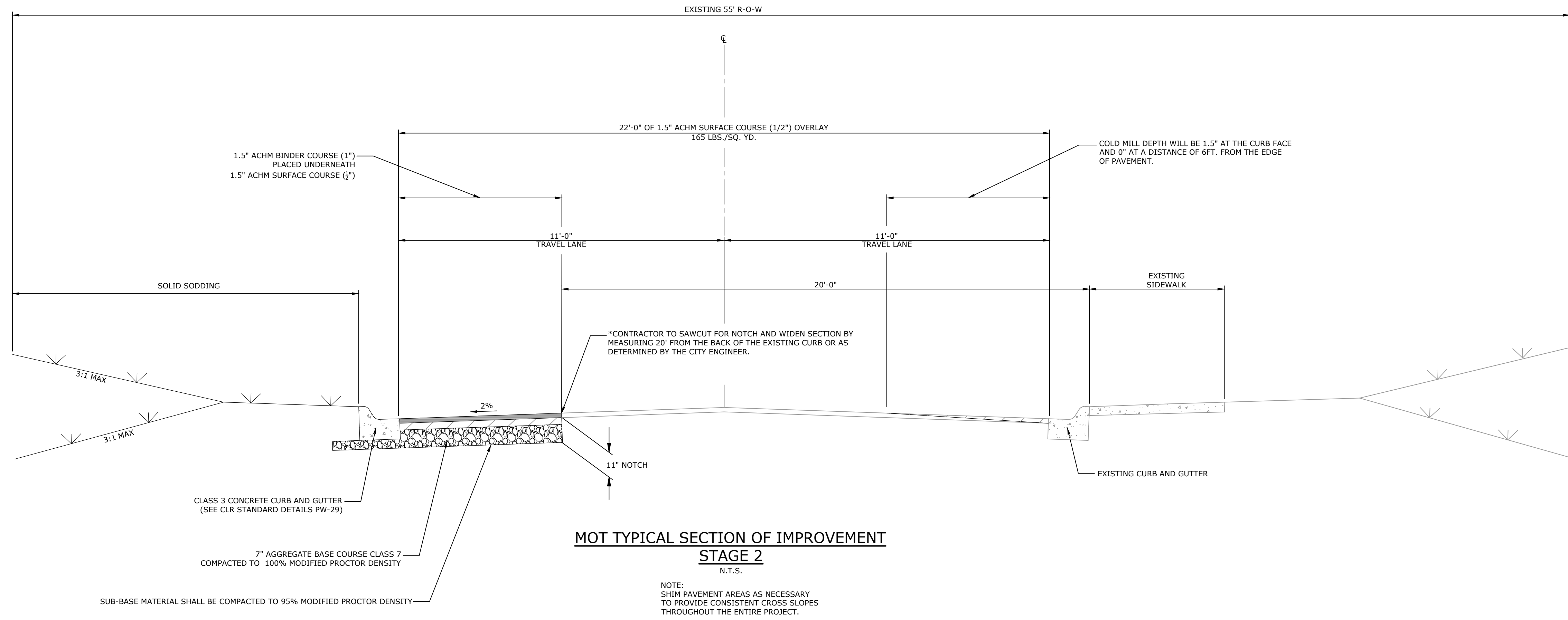
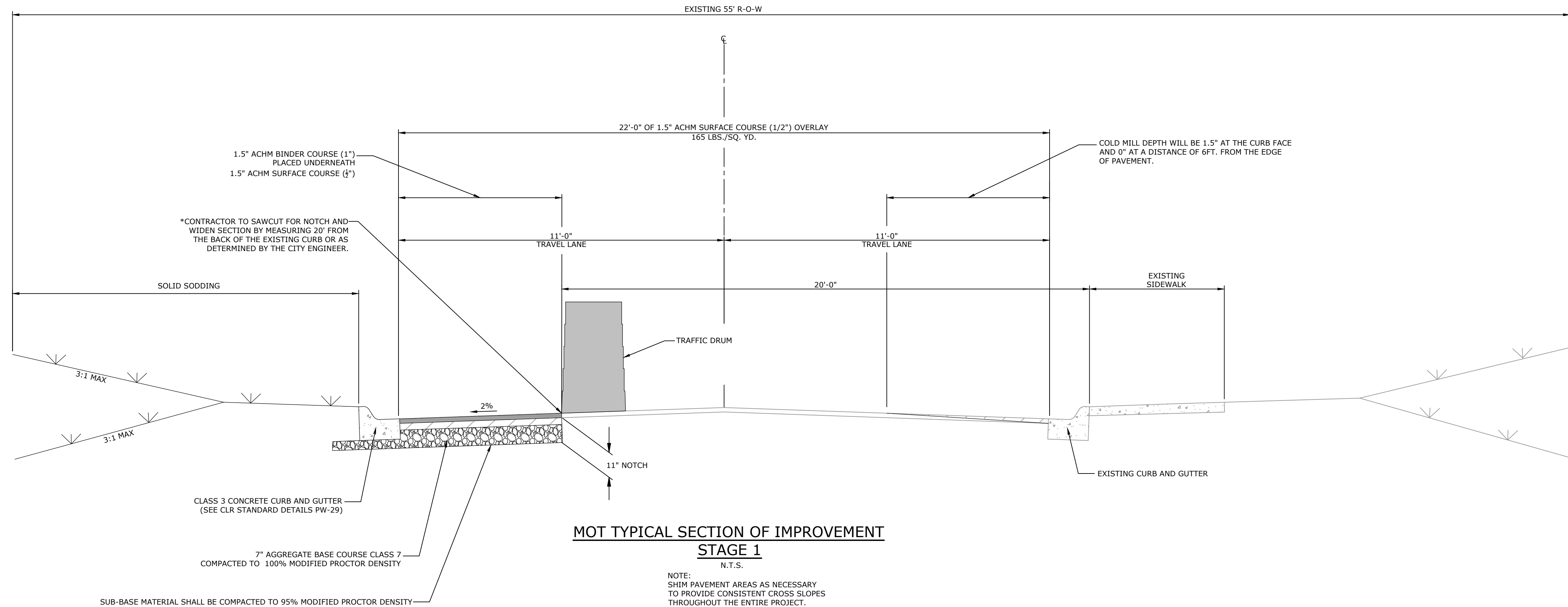
REVISIONS	DATE

CITY OF LITTLE ROCK, ARKANSAS
RUMMEL ROAD IMPROVEMENTS
TYPICAL SECTIONS MOT

DEPARTMENT OF PUBLIC WORKS
CIVIL ENGINEERING
701 W. MARKHAM
LITTLE ROCK, ARKANSAS 72201



DRAWN BY
JAM
DESIGNED
JJW
CHECKED
MK
DATE
06/14/2019
SCALE
NTS
PROJECT NO.
05-16-ST-224
SHEET NO.
C4


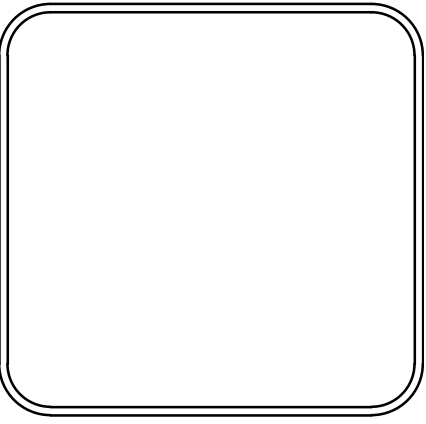


W:\2018\18-5821_City of Little Rock, Rummel Rd. Reconstruction\Design Drawings\18-5821-TYP SECTIONS.dwg, 6/13/19 at 12:18pm

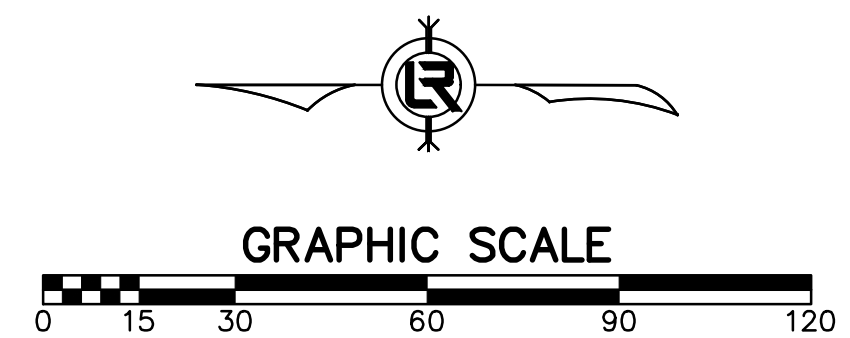
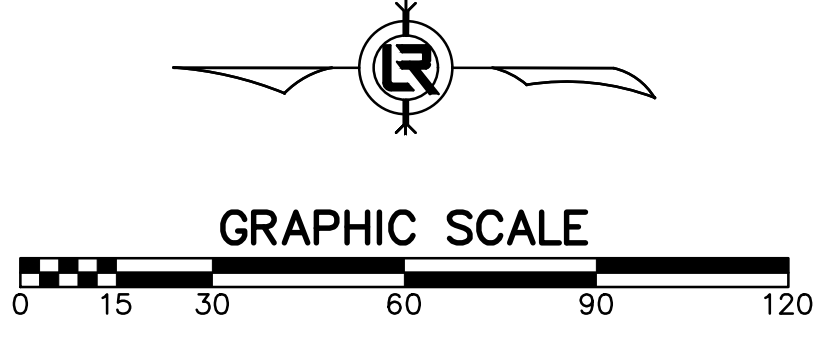
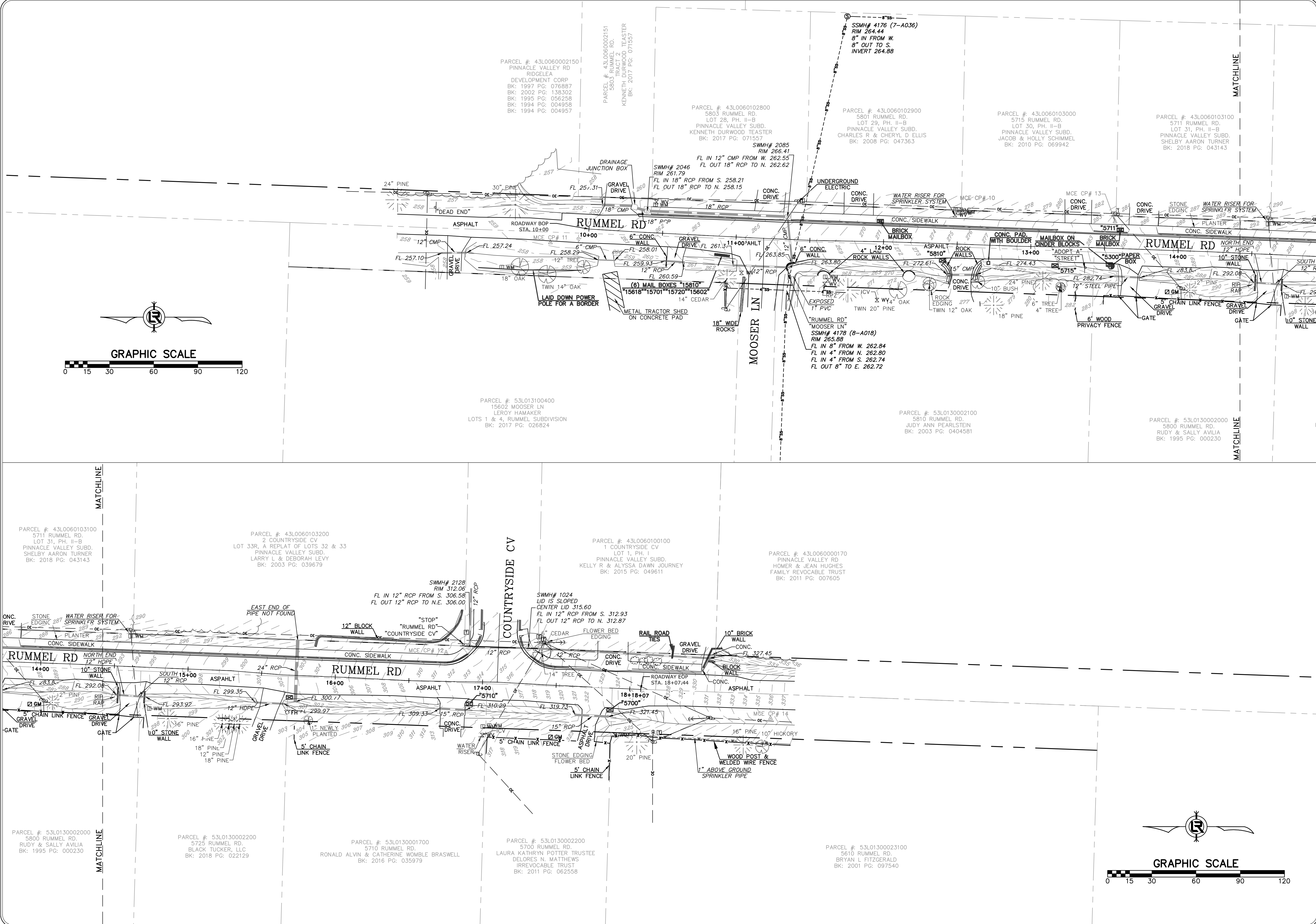
REVISIONS	DATE

CITY OF LITTLE ROCK, ARKANSAS
RUMMEL RD. RECONSTRUCTION
 TOPOGRAPHIC SURVEY

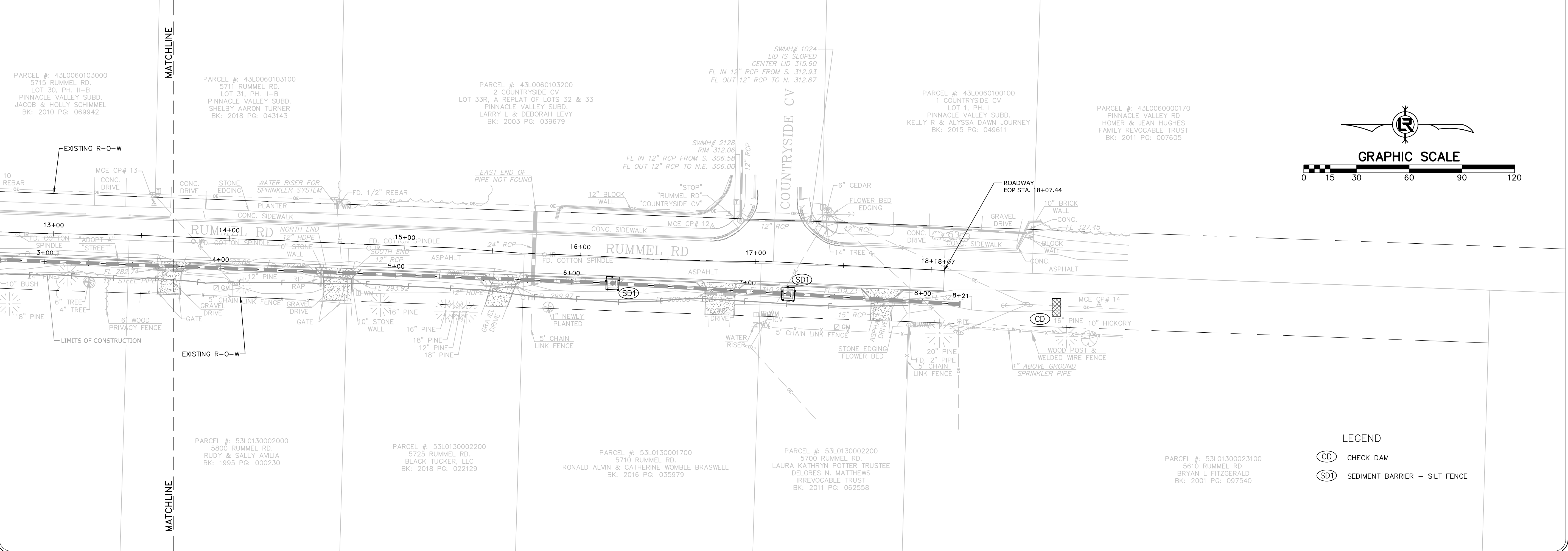
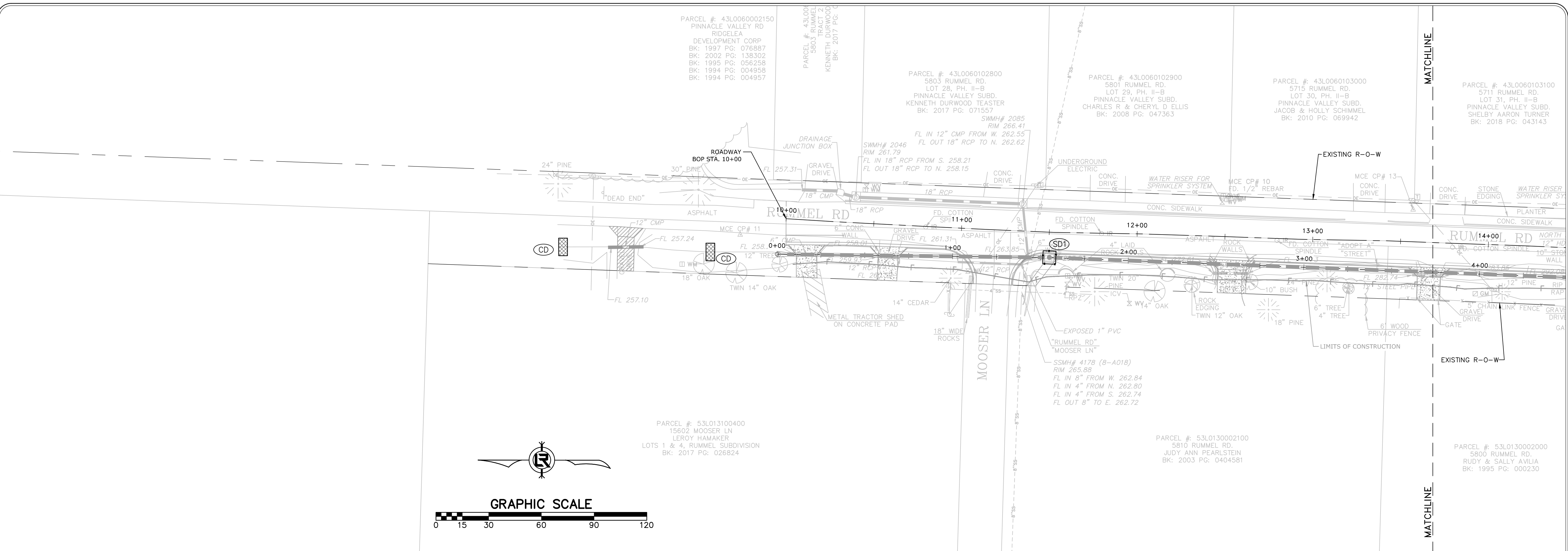
DEPARTMENT OF PUBLIC WORKS
 CIVIL ENGINEERING
 701 W. MARKHAM
 LITTLE ROCK, ARKANSAS 72201

DRAWN BY
JDM
 DESIGNED
NA
 CHECKED
KLS
 DATE
01/25/2019
 SCALE
1" = 30'
 PROJECT NO.
05-16-ST-224
 SHEET NO.
C5

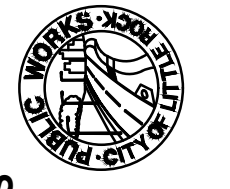



W:\2018-18-5821 City of Little Rock, Rummel Rd. Reconstruction\Design Drawings\18-5821-DESIGN.dwg 6/13/19 at 1:22pm





REVISIONS	DATE

CITY OF LITTLE ROCK, ARKANSAS
RUMMEL RD. RECONSTRUCTION
EROSION CONTROL PLAN

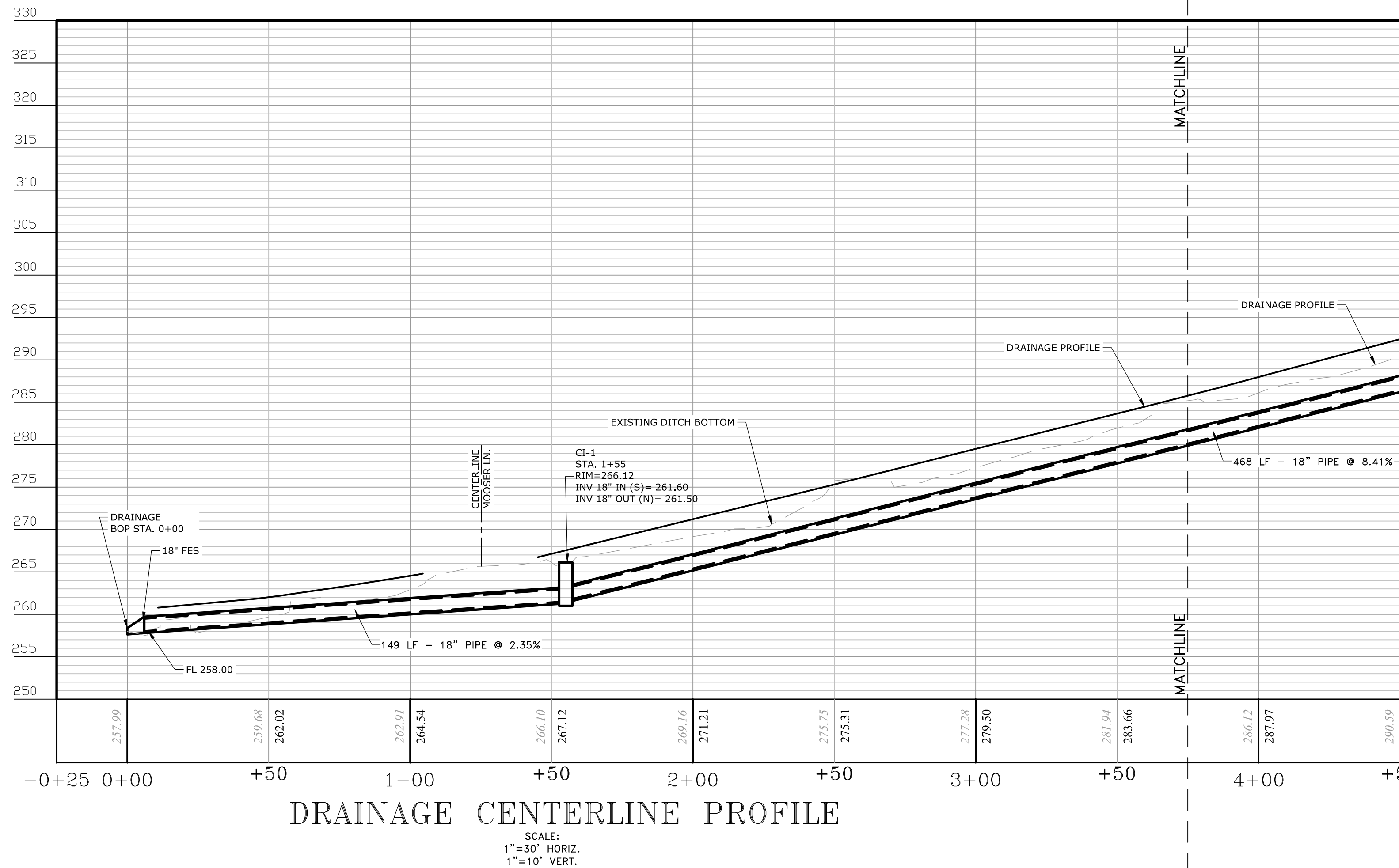
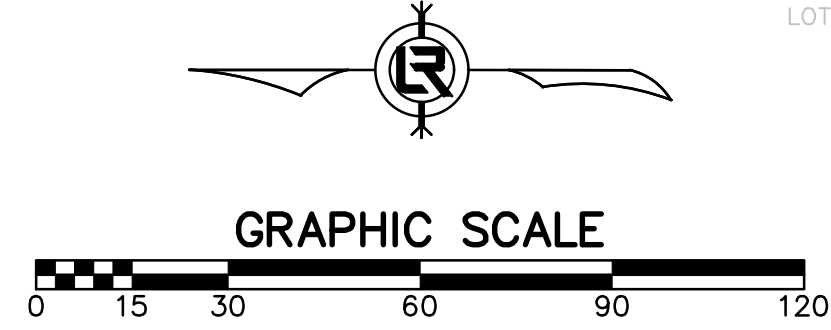
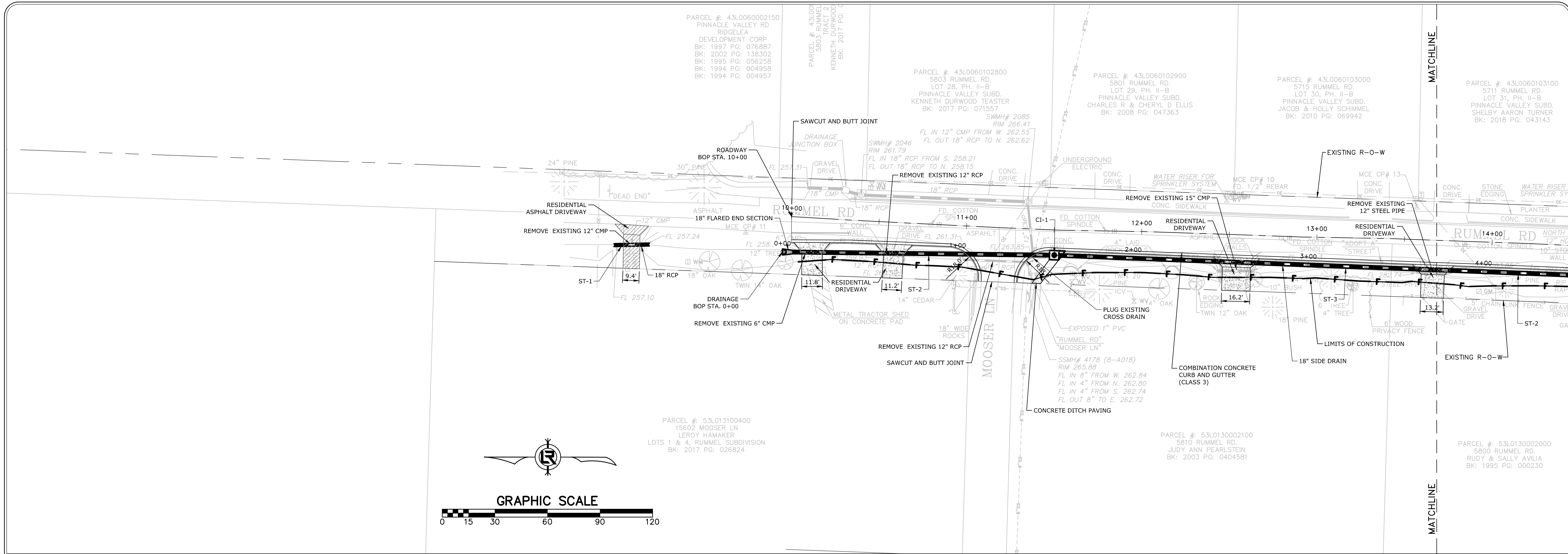

DEPARTMENT OF PUBLIC WORKS
CIVIL ENGINEERING
701 W. MARKHAM
LITTLE ROCK, ARKANSAS 72201



DRAWN BY
JAM
DESIGNED
JJW
CHECKED
MK
DATE
06/14/2019
SCALE
1"=30'
PROJECT NO.
05-16-ST-224
SHEET NO.
C6

LEGEND
 CHECK DAM
 SEDIMENT BARRIER - SILT FENCE

W:\2018\18-5821-City of Little Rock Rummel Rd. Reconstruction\Design Drawings\18-5821-DESIGN.dwg 6/13/19 at 1:35pm

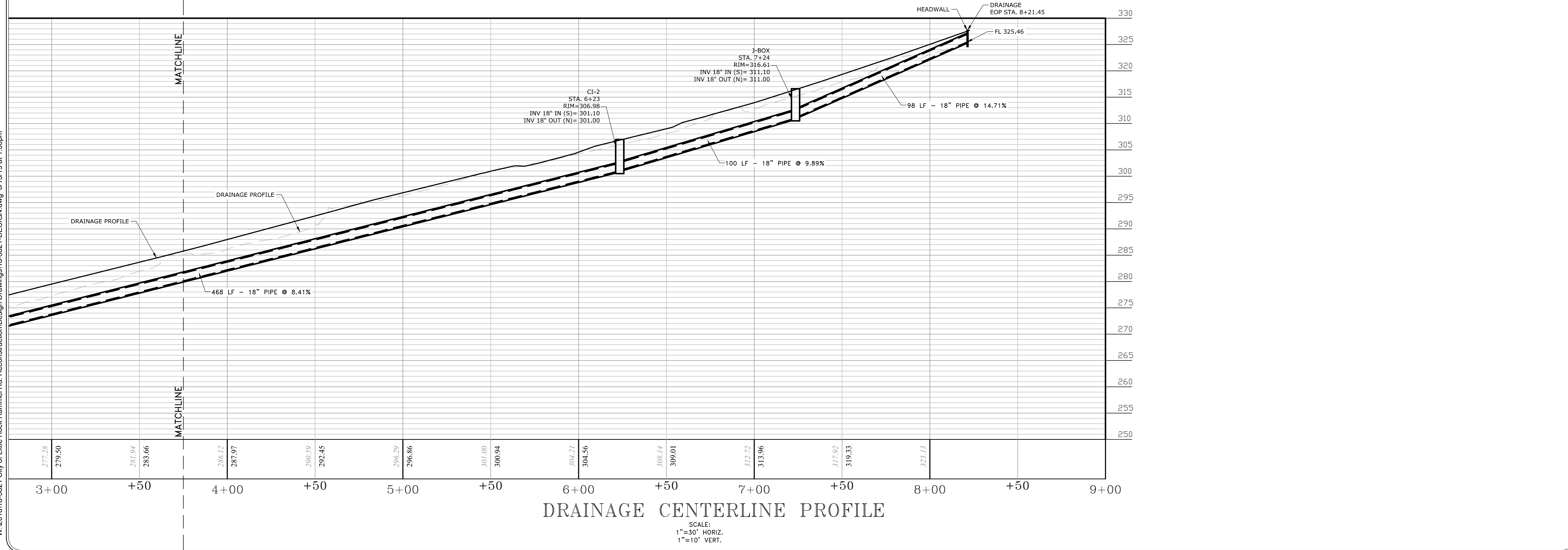
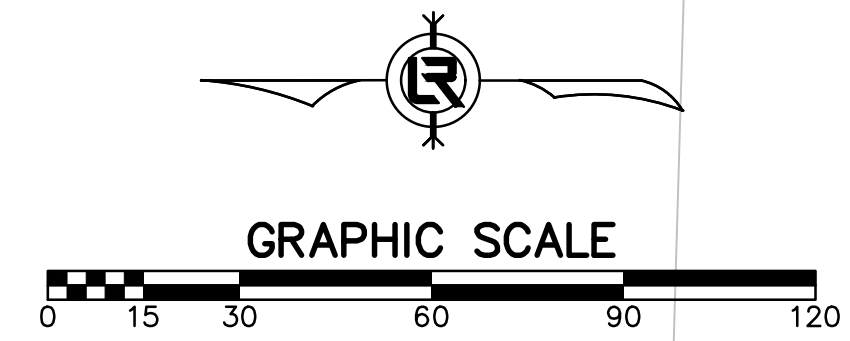
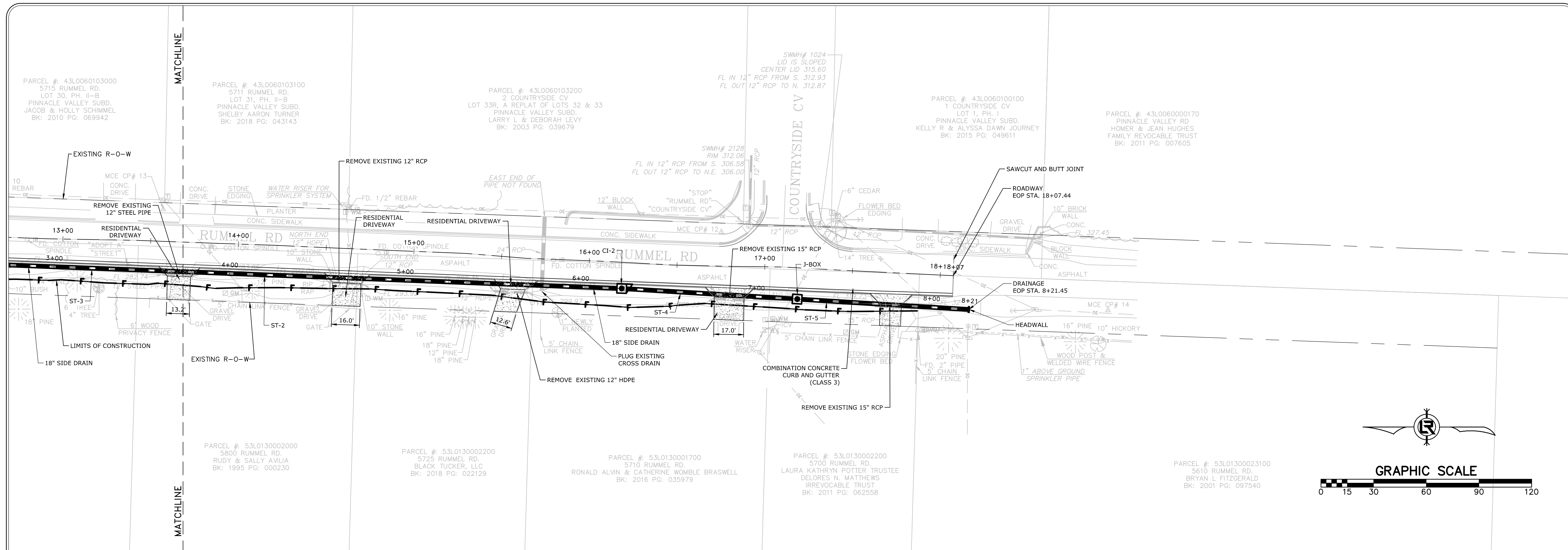


REVISIONS	DATE

CITY OF LITTLE ROCK, ARKANSAS
RUMMEL RD. RECONSTRUCTION
PLAN AND PROFILE

DEPARTMENT OF PUBLIC WORKS
CIVIL ENGINEERING
701 W. MARKHAM
LITTLE ROCK, ARKANSAS 72201

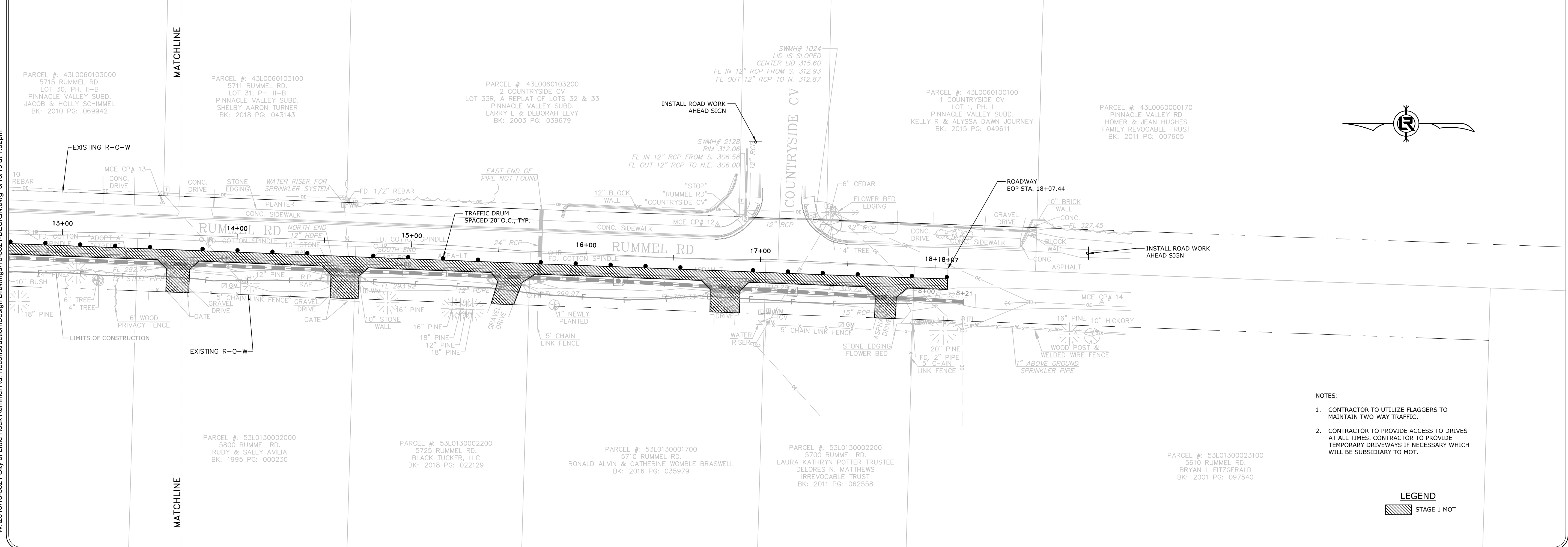
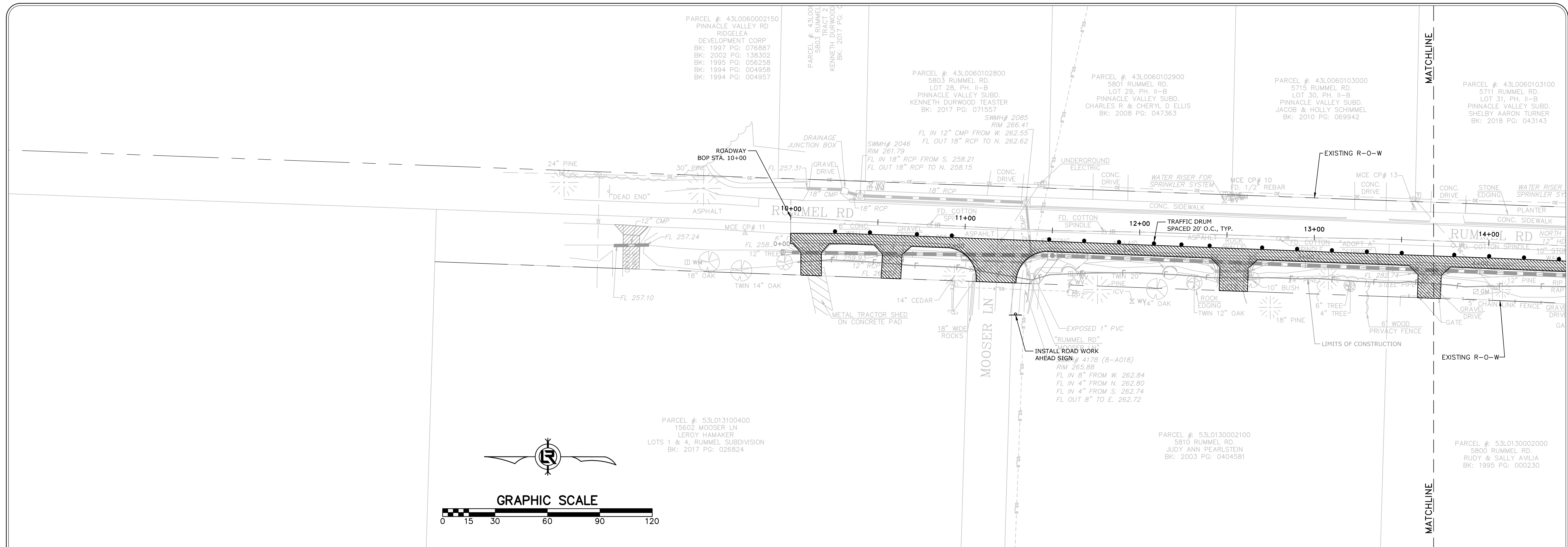
DRAWN BY
JAM
DESIGNED
JJW
CHECKED
MK
DATE
06/14/2019
SCALE
AS SHOWN
PROJECT NO.
05-16-ST-224
SHEET NO.
C7



DEPARTMENT OF PUBLIC WORKS
CIVIL ENGINEERING
701 W. MARKHAM
LITTLE ROCK, ARKANSAS 72201

DRAWN BY
JAM
DESIGNED
JJW
CHECKED
MK
DATE
06/14/2019
SCALE
AS SHOWN
PROJECT NO.
05-16-ST-224
SHEET NO.
C8

W:\2018\18-5821 City of Little Rock Rummel Rd. Reconstruction\Design Drawings\18-5821-DESIGN.dwg 6/13/19 at 1:32pm



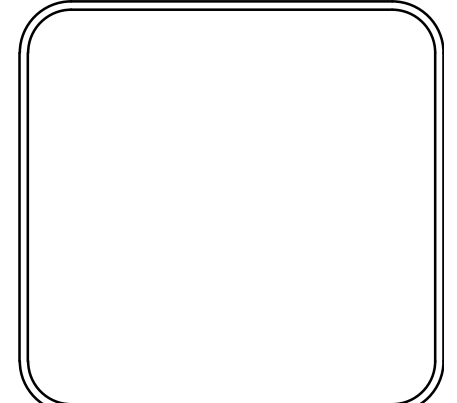
- NOTES:**
- CONTRACTOR TO UTILIZE FLAGGERS TO MAINTAIN TWO-WAY TRAFFIC.
 - CONTRACTOR TO PROVIDE ACCESS TO DRIVES AT ALL TIMES. CONTRACTOR TO PROVIDE TEMPORARY DRIVEWAYS IF NECESSARY WHICH WILL BE SUBSIDIARY TO MOT.

LEGEND
 STAGE 1 MOT

REVISIONS	DATE

CITY OF LITTLE ROCK, ARKANSAS
RUMMEL RD. RECONSTRUCTION
 MAINTENANCE OF TRAFFIC STAGE 1

DEPARTMENT OF PUBLIC WORKS
 CIVIL ENGINEERING
 701 W. MARKHAM
 LITTLE ROCK, ARKANSAS 72201




DRAWN BY
 JAM
DESIGNED
 JJW
CHECKED
 MK
DATE
 06/14/2019
SCALE
 1"=30'
PROJECT NO.
 05-16-ST-224
SHEET NO.
 C9

W:\2018\18-5821 City of Little Rock Rummel Rd. Reconstruction\Design Drawings\18-5821-DESIGN.dwg 6/13/19 at 1:33pm

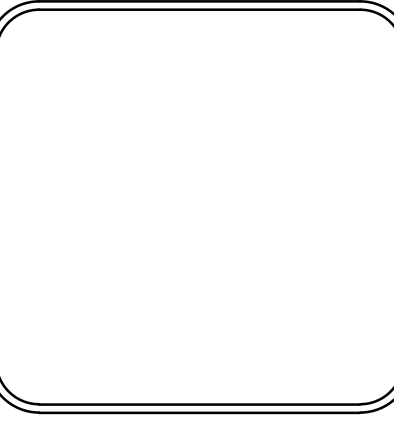


REVISIONS	DATE

CITY OF LITTLE ROCK, ARKANSAS
RUMMEL RD. RECONSTRUCTION
MAINTENANCE OF TRAFFIC STAGE 2



DEPARTMENT OF PUBLIC WORKS
CIVIL ENGINEERING
701 W. MARKHAM
LITTLE ROCK, ARKANSAS 72201

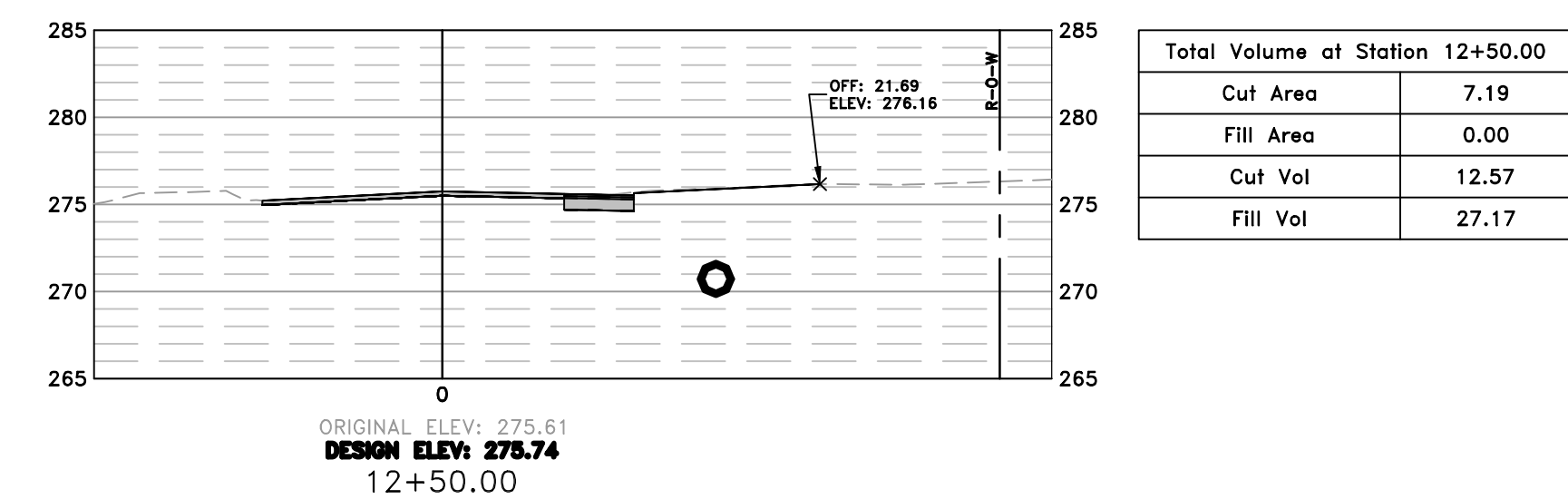
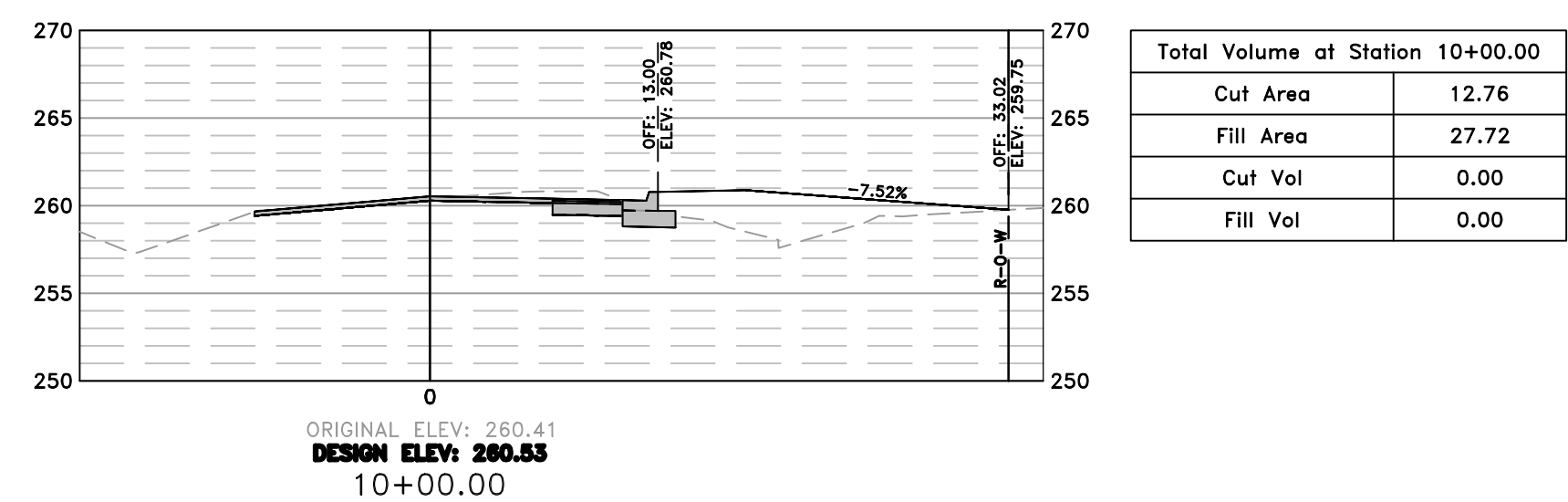
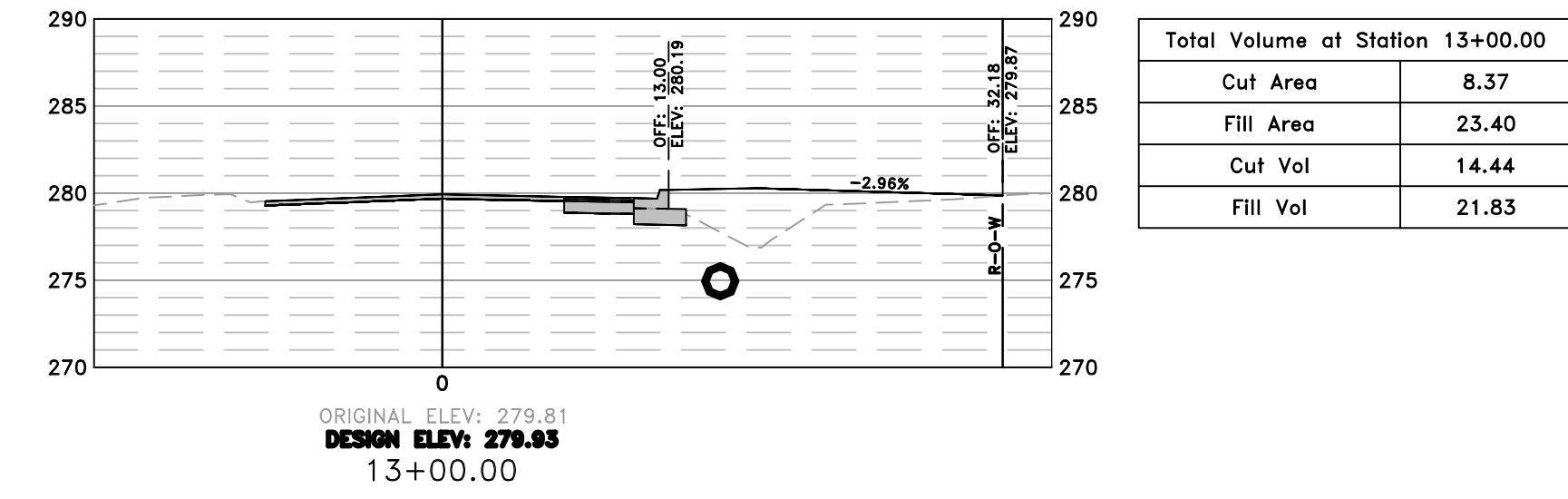
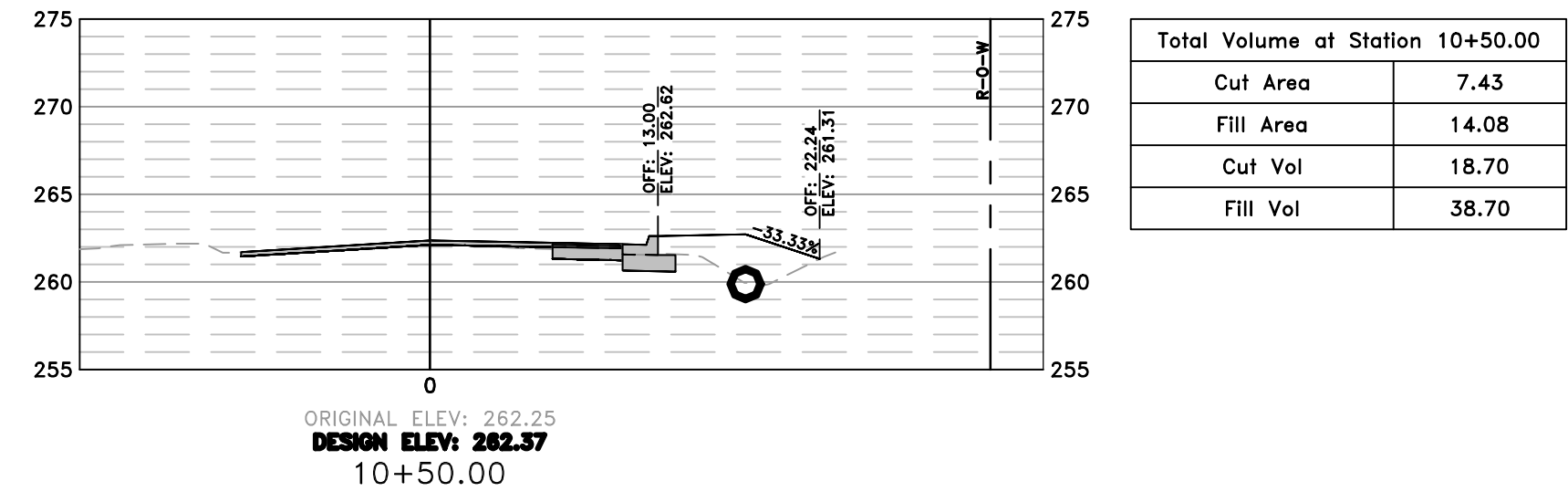
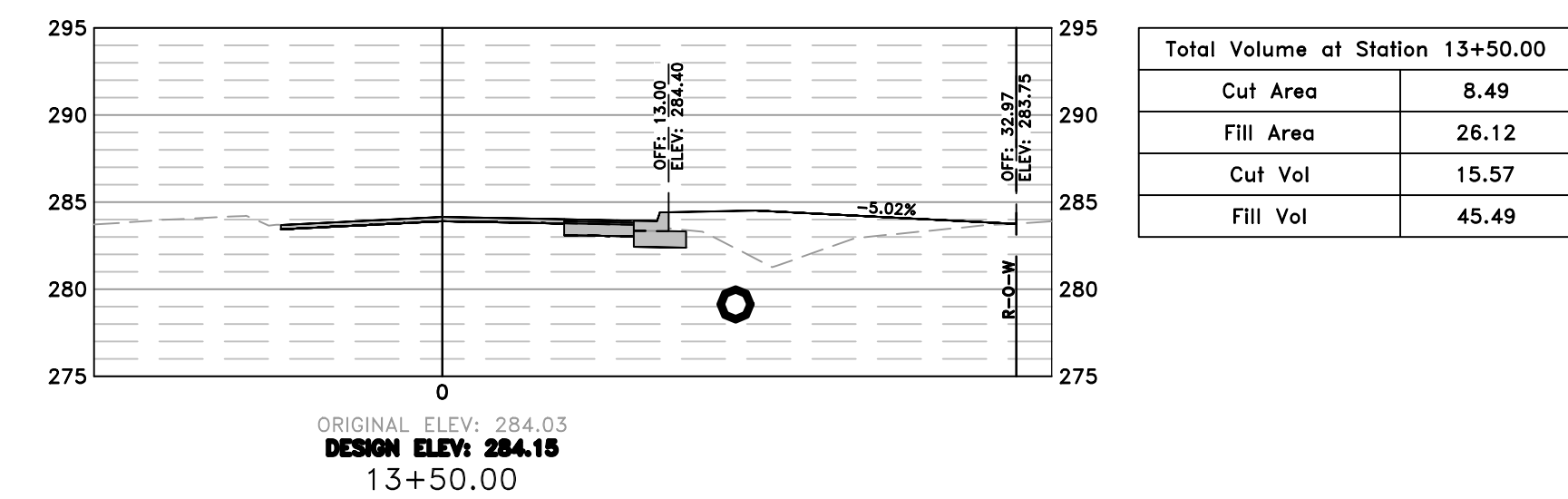
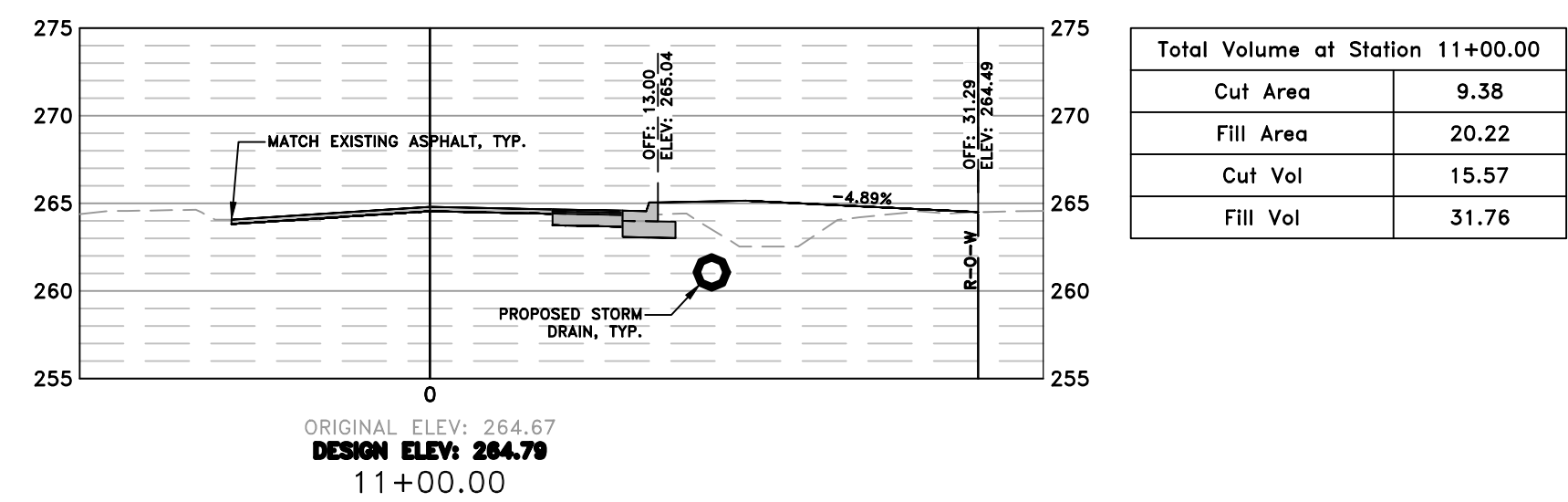
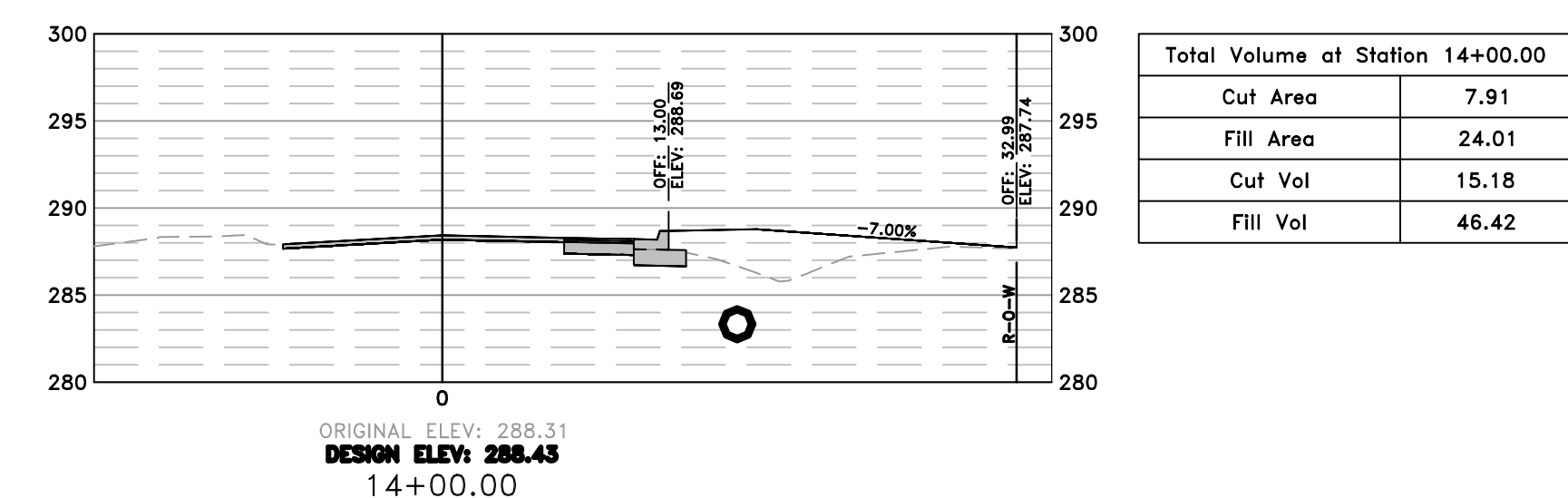
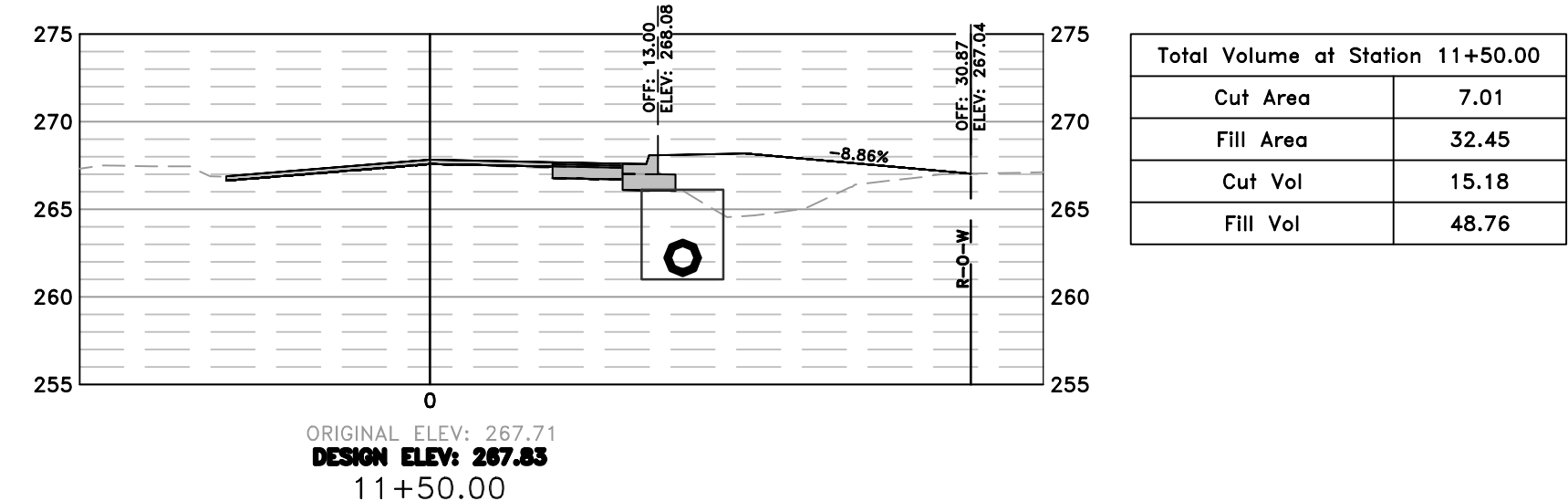
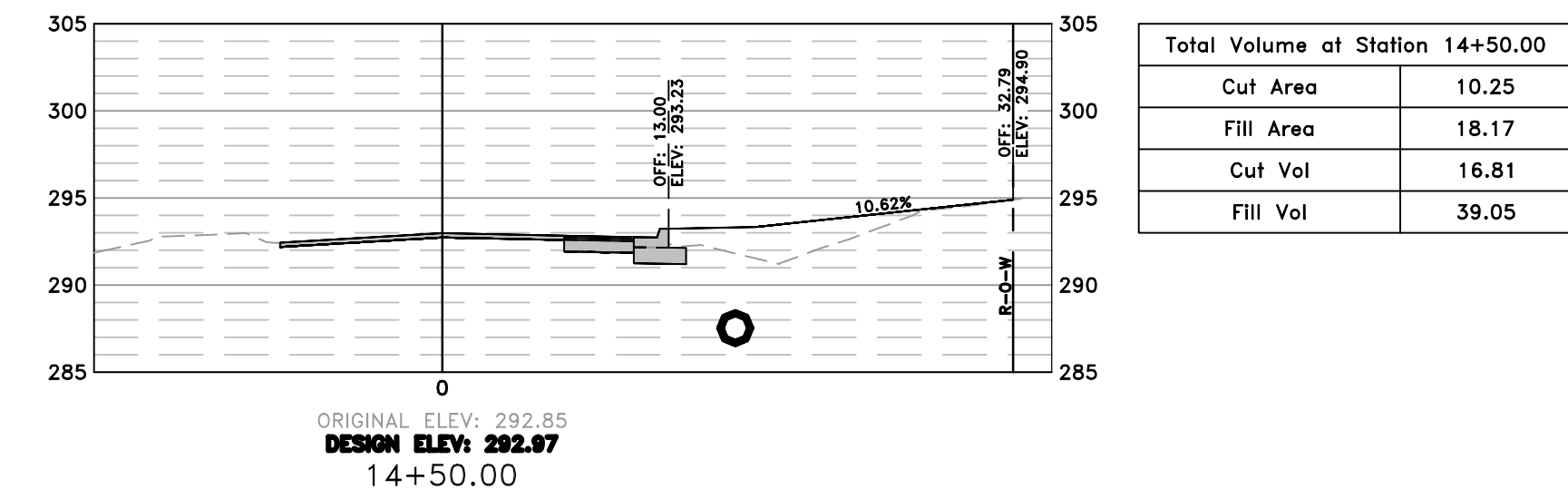
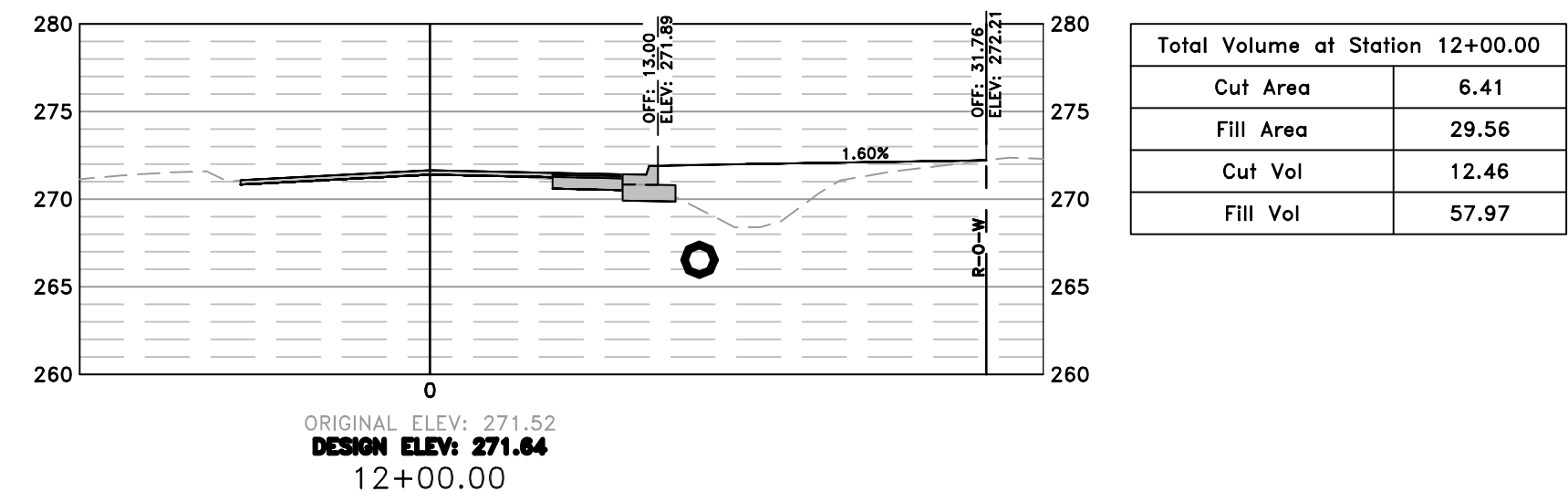


DRAWN BY JAM
DESIGNED JJW
CHECKED MK
DATE 06/14/2019
SCALE 1"=30'
PROJECT NO. 05-16-ST-224
SHEET NO. C10

- NOTES:**
- CONTRACTOR TO UTILIZE FLAGGERS TO MAINTAIN TWO-WAY TRAFFIC.
 - CONTRACTOR TO PROVIDE ACCESS TO DRIVES AT ALL TIMES. CONTRACTOR TO PROVIDE TEMPORARY DRIVEWAYS IF NECESSARY WHICH WILL BE SUBSIDIARY TO MOT.

LEGEND
 STAGE 2 MOT

W:\2018\18-5821 City of Little Rock Rummel Rd. Reconstruction\Design Drawings\18-5821-DESIGN.dwg 6/13/19 at 1:34pm



NOTE:
EARTHWORK TO BE PAID PER
PLAN QUANTITIES ONLY.

SCALE:
1"=10' HORIZ.
1"=10' VERT.

REVISIONS	DATE

CITY OF LITTLE ROCK, ARKANSAS
RUMMEL RD. RECONSTRUCTION
CROSS SECTIONS

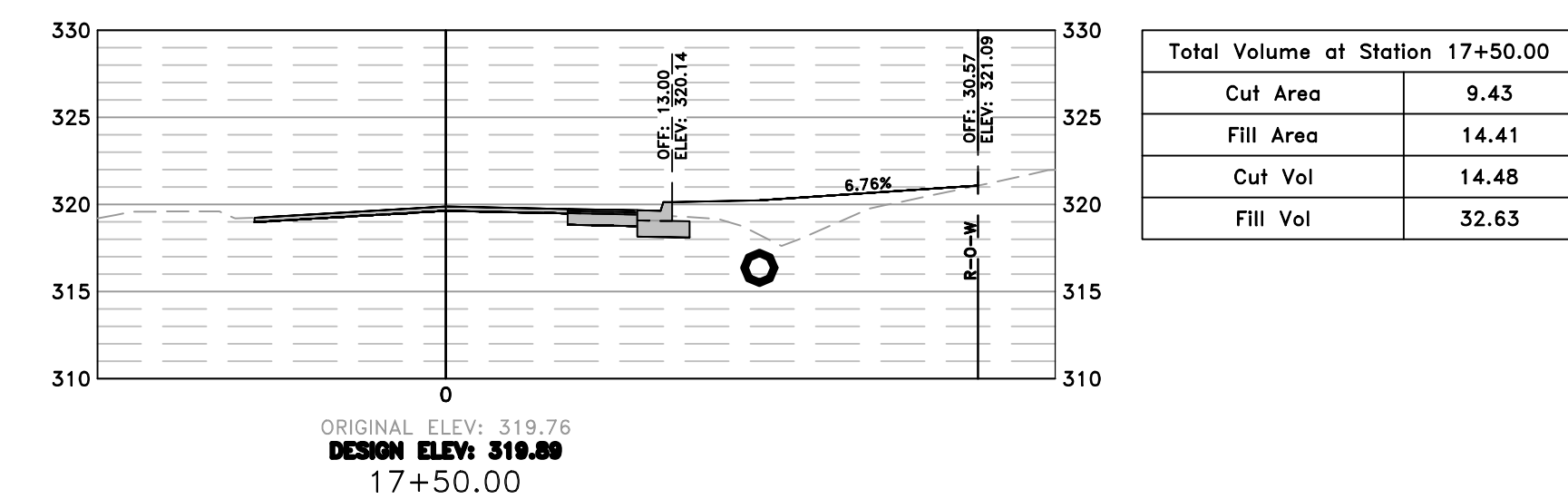
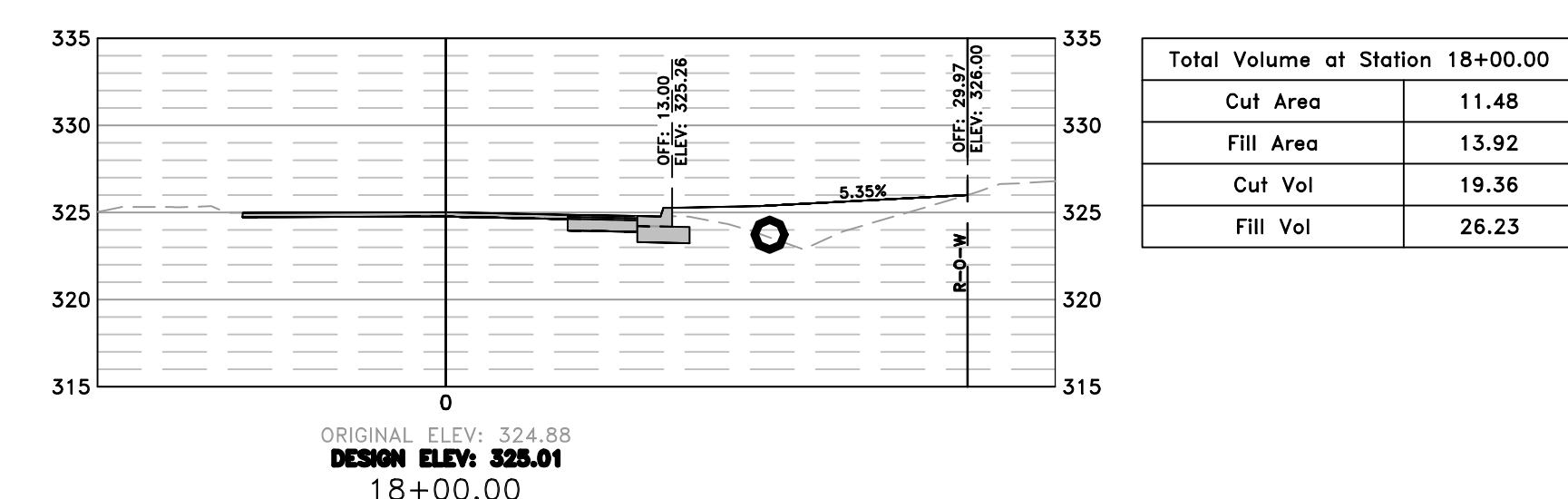
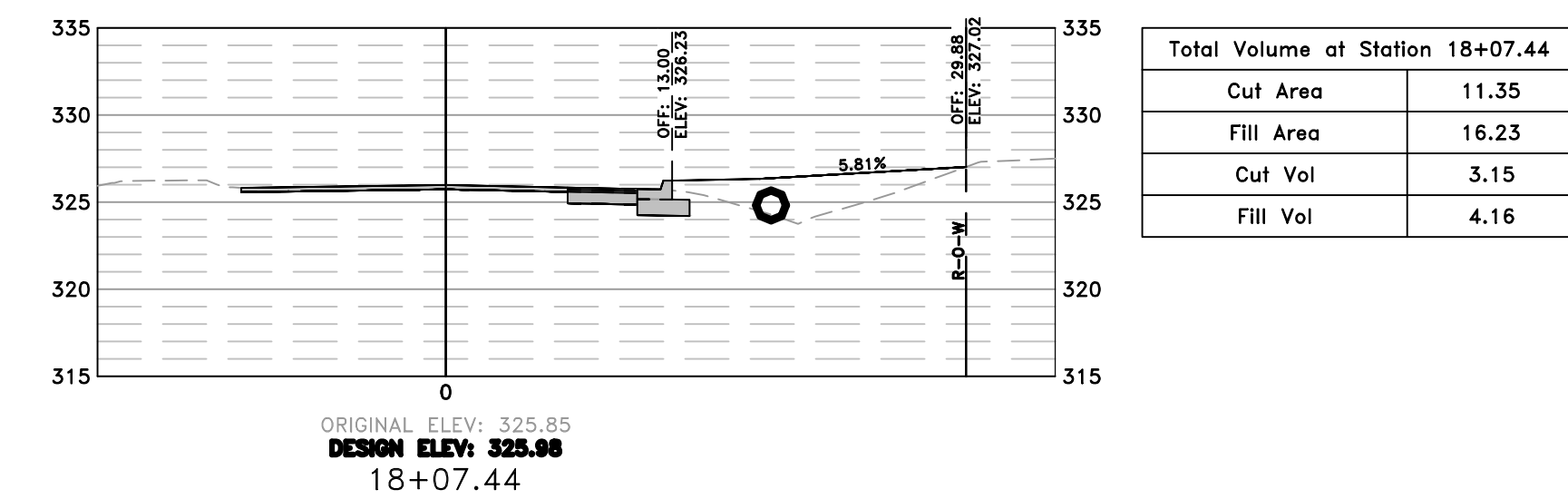
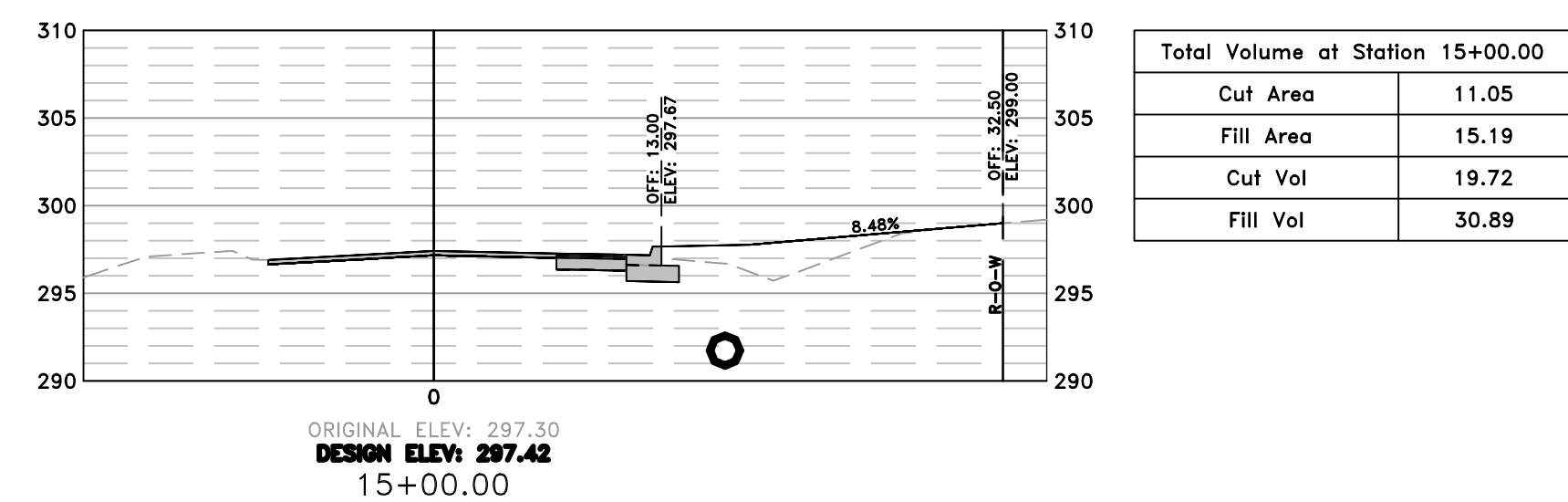
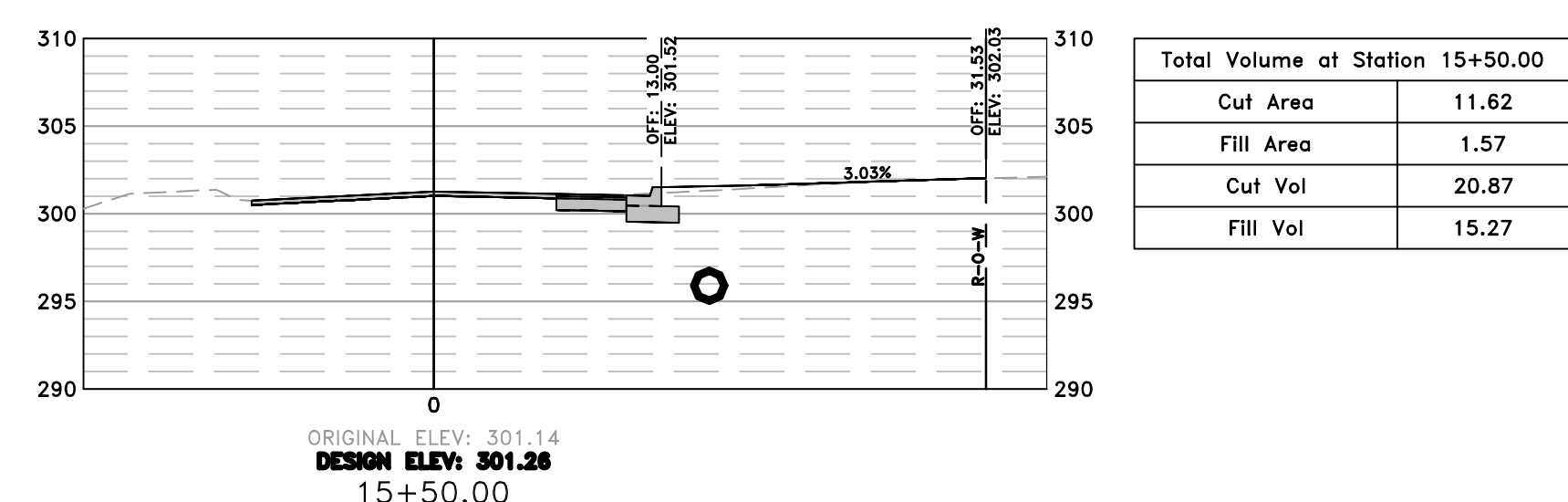
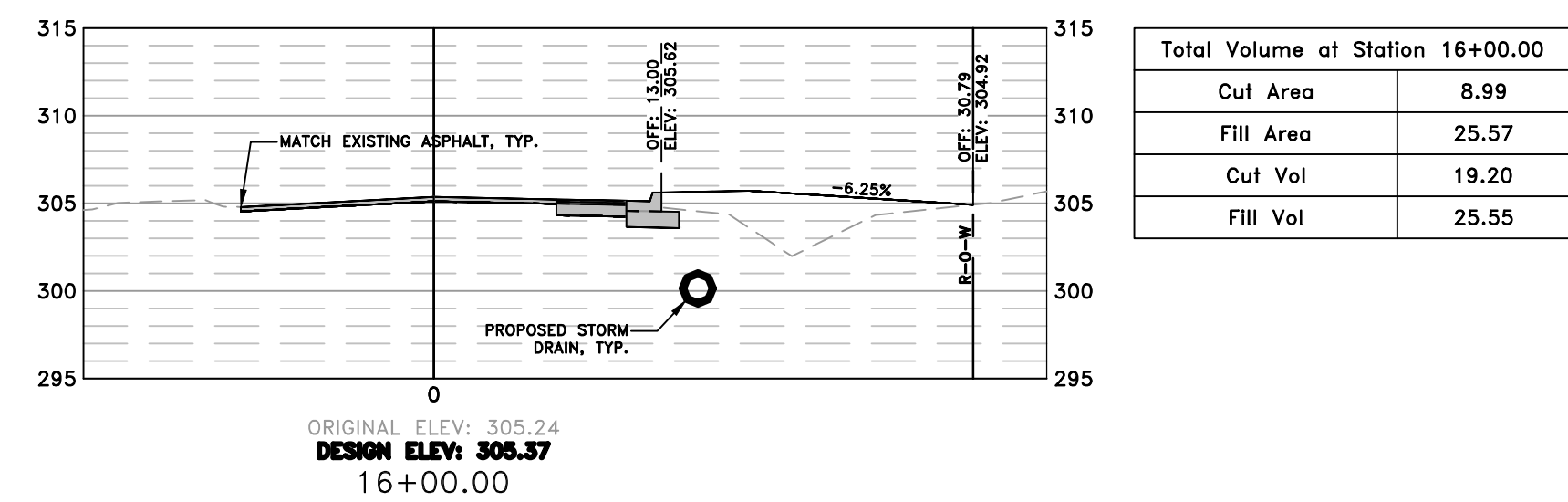
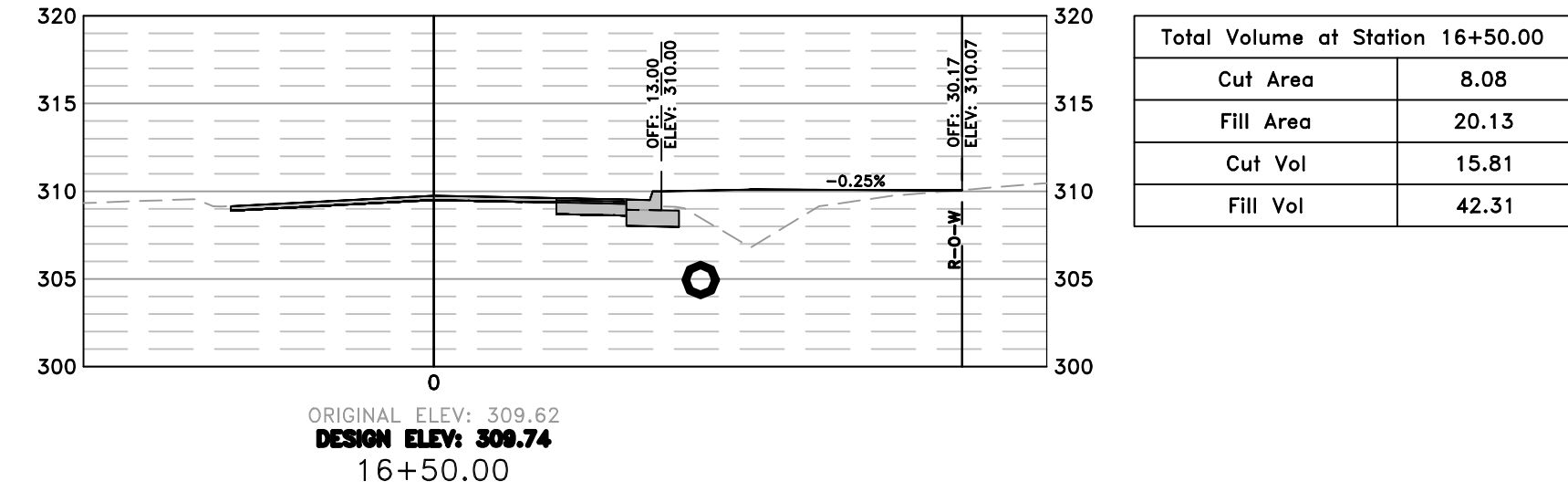
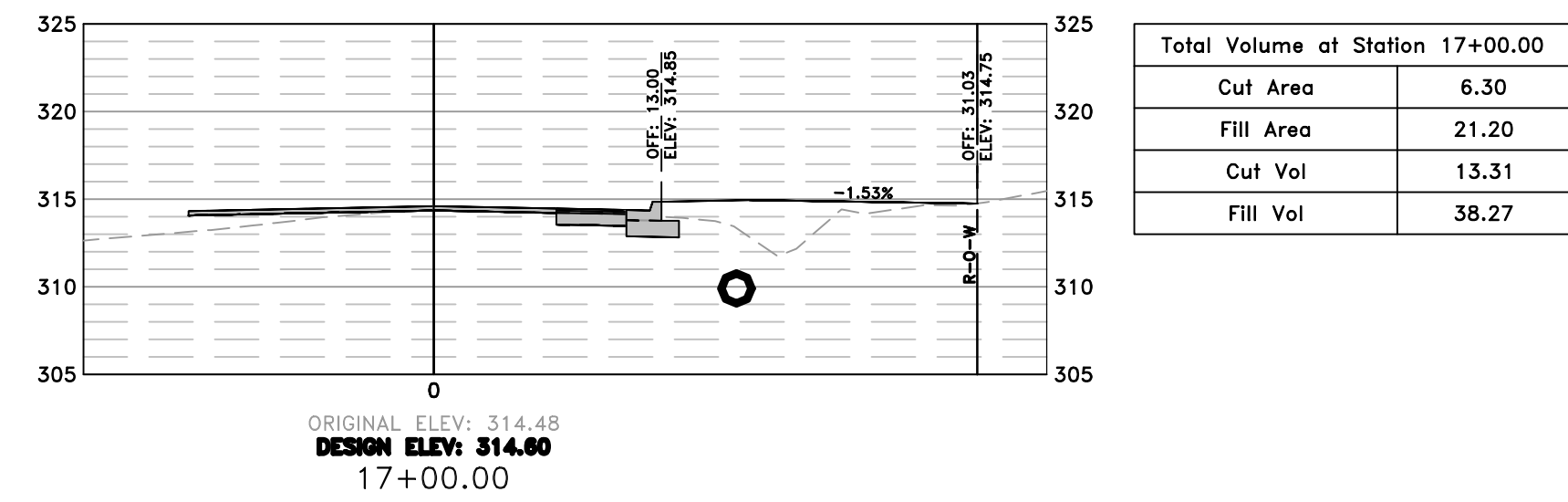


DEPARTMENT OF PUBLIC WORKS
CIVIL ENGINEERING
701 W. MARKHAM
LITTLE ROCK, ARKANSAS 72201



DRAWN BY
JAM
DESIGNED
JJW
CHECKED
MK
DATE
06/14/2019
SCALE
AS SHOWN
PROJECT NO.
05-16-ST-224
SHEET NO.
C11

W:\2018\18-5821 City of Little Rock, Rummel Rd. Reconstruction\Design Drawings\18-5821-DESIGN.dwg 6/13/19 at 1:34pm



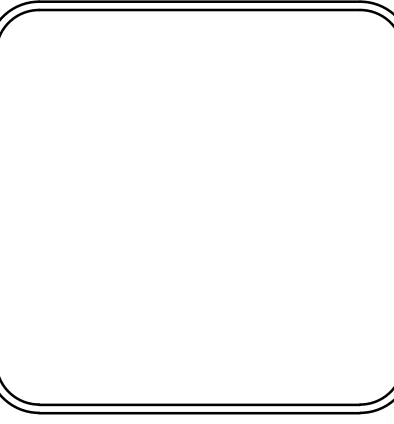
NOTE:
EARTHWORK TO BE PAID PER
PLAN QUANTITIES ONLY.

SCALE:
1"=10' HORIZ.
1"=10' VERT.

REVISIONS	DATE

CITY OF LITTLE ROCK, ARKANSAS
RUMMEL RD. RECONSTRUCTION
CROSS SECTIONS

DEPARTMENT OF PUBLIC WORKS
CIVIL ENGINEERING
701 W. MARKHAM
LITTLE ROCK, ARKANSAS 72201



DRAWN BY JAM
DESIGNED JJW
CHECKED MK
DATE 06/14/2019
SCALE AS SHOWN
PROJECT NO. 05-16-ST-224
SHEET NO. C12