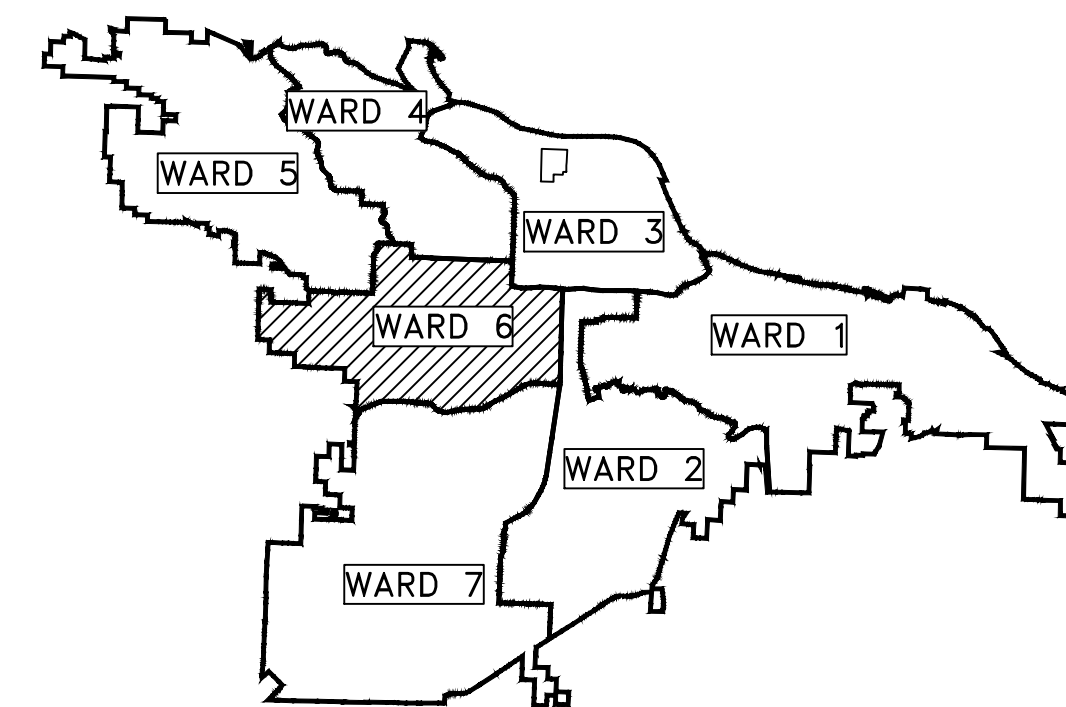


CLR PROJECT 03-17-ST-163

SHANNON DRIVE

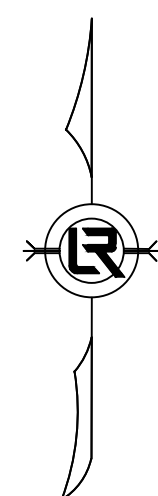
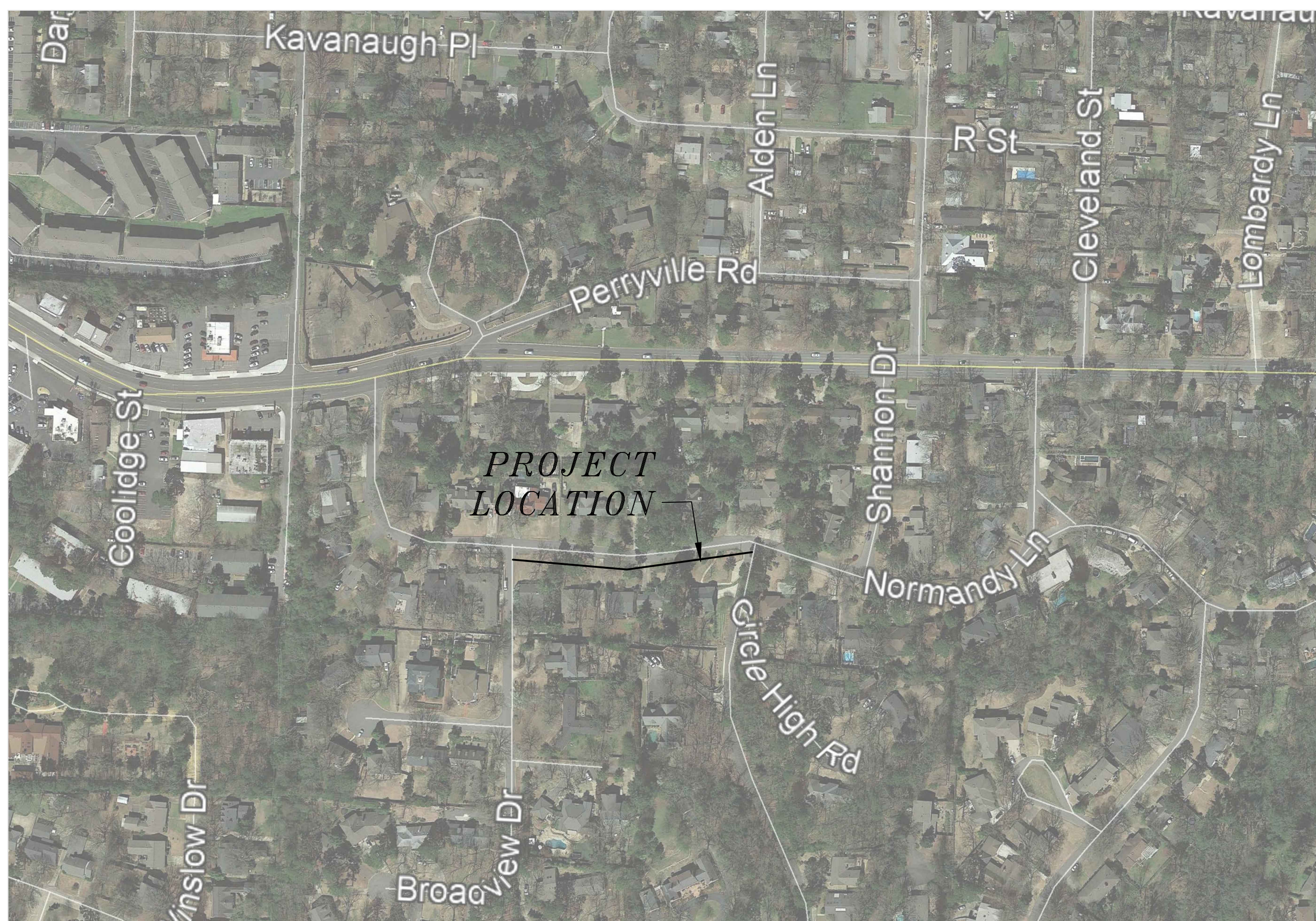
DRAINAGE IMPROVEMENTS

LITTLE ROCK, ARKANSAS



PROJECT LOCATION – WARD 6

SHEET NO.	TITLE
C1	COVER SHEET
C2	GENERAL NOTES, LEGEND AND QUANTITIES
C3	LAYOUT
C4	PROPOSED
C5	EROSION CONTROL
C6	DETAILS



2019-2021
BOND PROGRAM

DEPARTMENT OF PUBLIC WORKS
CIVIL ENGINEERING
701 WEST MARKHAM STREET
LITTLE ROCK, ARKANSAS 72201



HR 320 Executive Court
Suite 304
Little Rock, AR 72205
501.907.7153

REVISIONS	DATE

CITY OF LITTLE ROCK, ARKANSAS
SHANNON DR. DRAINAGE IMPROVEMENTS

COVER SHEET

DEPARTMENT OF PUBLIC WORKS
CIVIL ENGINEERING
701 W. MARKHAM
LITTLE ROCK, ARKANSAS 72201



SEAL

DRAWN BY

DESIGNED
JRH
CHECKED
JRH
DATE
1/15/19
SCALE
NTS

PROJECT NO.
03-17-ST-163
SHEET NO.

C1

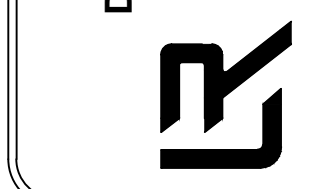
REVISIONS	DATE

ESTIMATED QUANTITIES			
CLR PROJECT 03-17-ST-163			
SHANNON DRIVE RECONSTRUCTION			
3-Jun-19			
ITEM #	ITEM DESCRIPTION	UNIT	QUANTITY
2.01	SITE PREPARATION	LS	1
3.01	UNCLASSIFIED EXCAVATION	CY	100
3.06	BORROW MATERIAL	CY	100
7.06	CONCRETE DRIVEWAY (6" THICK), STANDARD FINISH	SF	875
8.03	CONCRETE CURB AND GUTTER (CLASS 3)	LF	600
10.01	JUNCTION BOX	EA	1
10.05	CURB INLET - 5' BOX	EA	1
10.10	WING 6' EXTENSION	EA	1
13.18P	STORM DRAIN PIPE, 18" HDPE	LF	20
14.01	SOLID SODDING, BERMUDA	SY	1200
16.01	MAINTENANCE OF TRAFFIC	LS	1
17.01	PAVEMENT REPAIRS	SY	225
19.10	CLEANUP	LS	1
24.11	SILT FENCE - TYPE A (SFA)	LF	750
24.22	INLET SEDIMENT TRAP (SB-1)	EA	2

EXISTING	PROPOSED
IRON ROD	PROPOSED CONTOUR
PK NAIL	PROPOSED SPOT ELEVATION
R.R. SPIKE	PROPOSED SPOT CURB ELEVATION
CONC. MONUMENT	STORM SEWER - PIPE
WATER VALVE	STORM SEWER - MITERED END SECTION
WATER METER	STORM SEWER - GRATE INLET
FIRE HYDRANT	STORM SEWER - JUNCTION BOX
GAS METER	STORM SEWER - FLARED END SECTION
GAS VALVE	STORM SEWER - NO WING
CLEAN-OUT	STORM SEWER - SINGLE WING
GUARD POST (BOLLARD)	STORM SEWER - DOUBLE WING
SIGN POST	STORM SEWER - AREA INLET
BENCHMARK	GRADE BREAK LINE
STORM SEWER MANHOLE	HIGH POINT
SANITARY SEWER MANHOLE	LOW POINT
TELEPHONE MANHOLE	CUT LINE
ELECTRIC MANHOLE	FILL LINE
TELEPHONE BOX	SANITARY SEWER PIPE
ELECTRIC BOX	SANITARY SEWER MANHOLE
CABLE BOX	PROPOSED CURB
UTILITY POLE	PROPOSED CONCRETE
GUY WIRE	CONSTRUCTION - ENTRANCE/EXIT
LIGHT POLE	CHECK DAM
POST OR POLE (TYPE AS NOTED)	DIVERSION BERM
MAILBOX	DOWNDRAIN STRUCTURE - TEMPORARY
DECIDUOUS TREE	ROCK DAM
EVERGREEN/CONIFEROUS TREE	SEDIMENT BARRIER - SILT FENCE
BUSH	SEDIMENT BARRIER - GRAVEL RING
PROPERTY LINE	SEDIMENT BARRIER - BLOCK & GRAVEL
SETBACK LINE	SEDIMENT BARRIER - BLOCK
EASEMENT LINE	TEMPORARY SEDIMENT BASIN
CURB	SILT FENCE - TYPE A
FENCE	SILT FENCE - TYPE B
OVERHEAD ELECTRIC	SILT FENCE - TYPE C
OVERHEAD TELEPHONE	STORM DRAIN OUTLET PROTECTION
OVERHEAD CABLE	SURFACE ROUGHENING
UNDERGROUND TELEPHONE	DISTURBED AREA STABILIZATION -TEMPORARY STABILIZATION
UNDERGROUND ELECTRIC	DISTURBED AREA STABILIZATION -TEMPORARY GRASSING
UNDERGROUND CABLE	DISTURBED AREA STABILIZATION -PERMANENT GRASSING
WATER LINE	MATTING/BLANKETS
SEWER LINE	
GAS LINE	
STORM SEWER/CULVERT	
EDGE OF WOODS	
CONTOUR LINE	

CITY OF LITTLE ROCK, ARKANSAS
SHANNON DR. DRAINAGE IMPROVEMENTS
GENERAL NOTES, LEGEND AND QUANTITIES

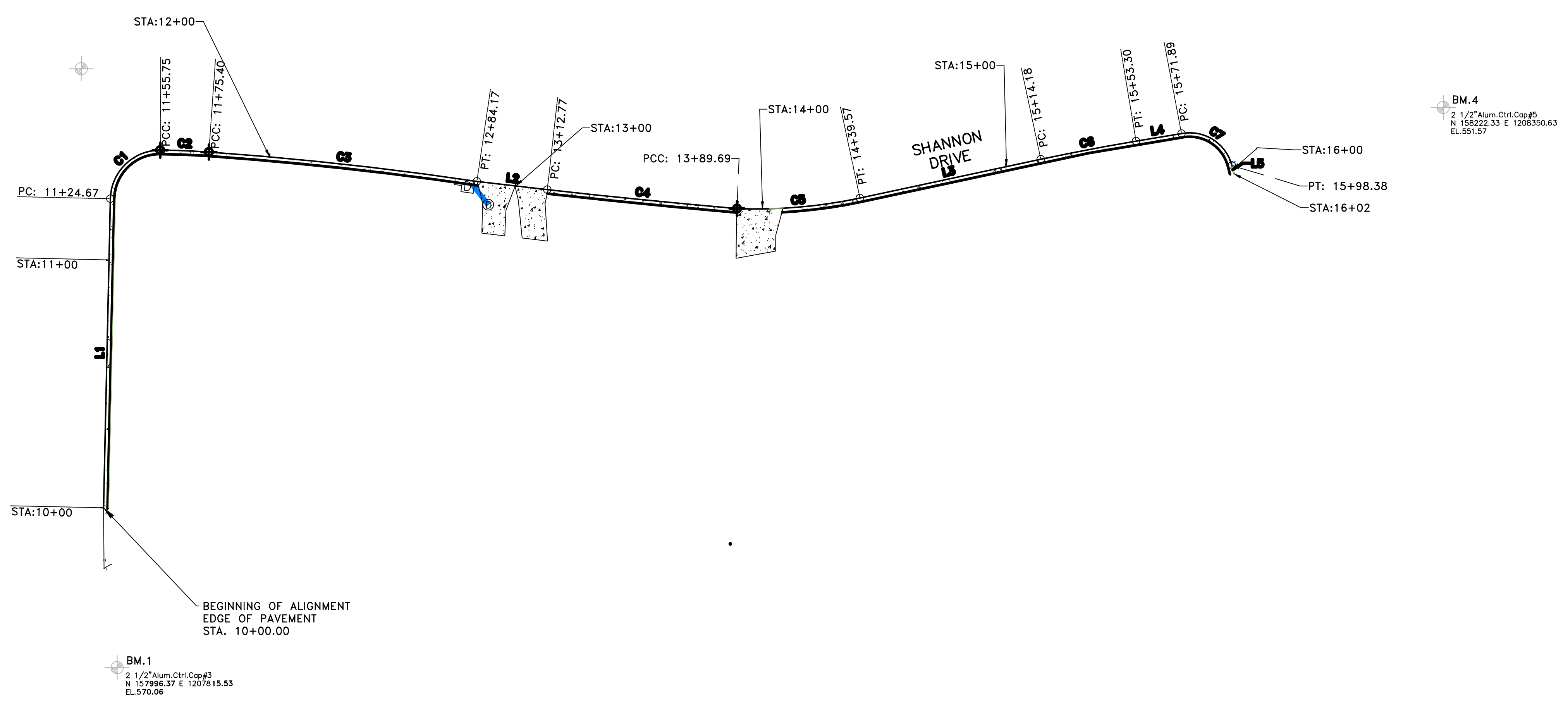
DEPARTMENT OF PUBLIC WORKS
CIVIL ENGINEERING
701 W. MARKHAM
LITTLE ROCK, ARKANSAS 72201



DRAWN BY
JRH
DESIGNED
JRH
CHECKED
JRH
DATE
1/15/19
SCALE
NTS
PROJECT NO.
03-17-ST-163
SHEET NO.
C2

REVISIONS	DATE

CITY OF LITTLE ROCK, ARKANSAS
SHANNON DR. DRAINAGE IMPROVEMENTS
 LAYOUT

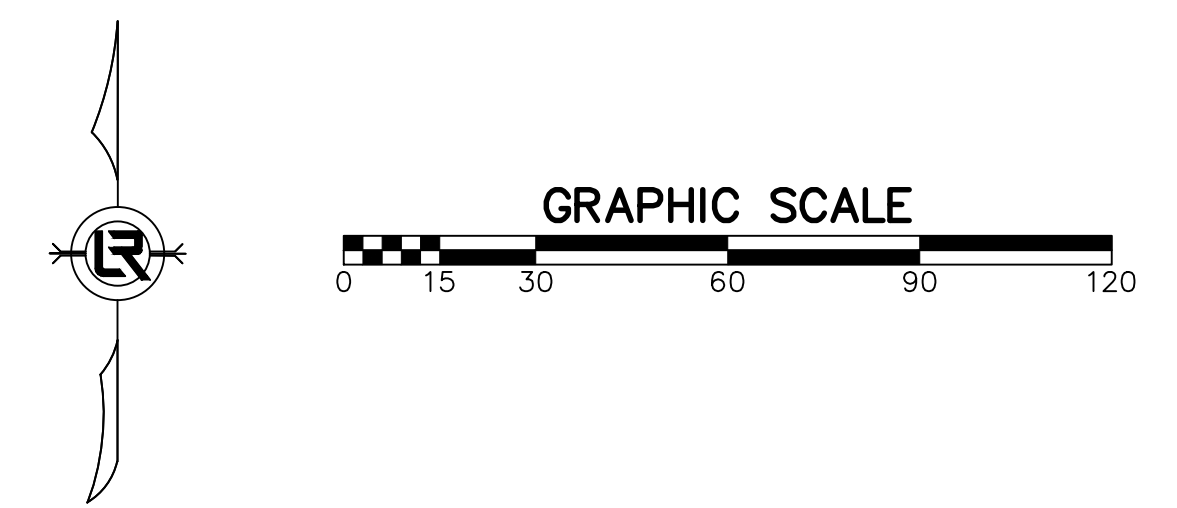


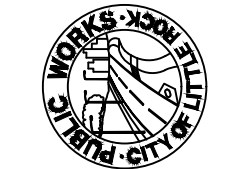
Line Table: Alignments

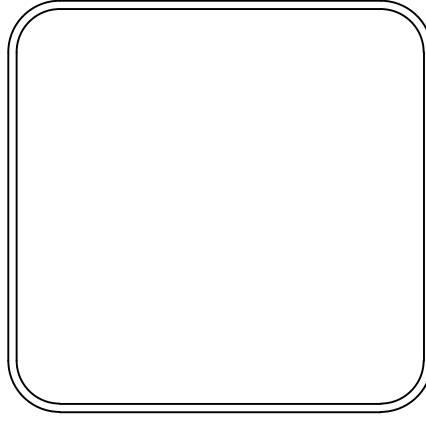
Line #	Length	Direction	Start Point	End Point
L1	24.669	N1° 16' 13.80"E	(1207810.1720,158060.8730)	(1207812.9362,158185.5116)
L2	28.600	S83° 20' 17.88"E	(1207960.7670,158192.4984)	(1207989.1741,158189.1805)
L3	74.610	N77° 55' 02.16"E	(1208115.2853,158185.8055)	(1208188.2425,158201.4232)
L4	18.596	N80° 31' 52.32"E	(1208226.6599,158208.7348)	(1208245.0020,158211.7940)
L5	3.412	S13° 31' 27.06"E	(1208265.3202,158198.9166)	(1208266.1182,158195.5990)

Curve Table: Alignments

Curve #	Radius	Length	Chord Direction	Start Point	End Point
C1	20.000	31.084	N45° 47' 41.76"E	(1207812.9362,158185.5116)	(1207833.0428,158205.0678)
C2	300.784	19.646	S87° 48' 34.07"E	(1207833.0428,158205.0678)	(1207852.6710,158204.3170)
C3	1430.671	108.766	S83° 45' 37.24"E	(1207852.6710,158204.3170)	(1207960.7670,158192.4984)
C4	3188.047	76.922	S84° 17' 06.59"E	(1207989.1741,158189.1805)	(1208065.7123,158181.5210)
C5	200.214	49.887	N85° 03' 37.06"E	(1208065.7123,158181.5210)	(1208115.2853,158185.8055)
C6	857.275	39.110	N79° 13' 27.24"E	(1208188.2425,158201.4232)	(1208226.6599,158208.7348)
C7	17.582	26.491	S57° 38' 02.65"E	(1208245.0020,158211.7940)	(1208265.3202,158198.9166)




 DEPARTMENT OF PUBLIC WORKS
 CIVIL ENGINEERING
 701 W. MARKHAM
 LITTLE ROCK, ARKANSAS 72201



DRAWN BY

DESIGNED
JRH

CHECKED
JRH

DATE
1/15/19

SCALE
1"=20'

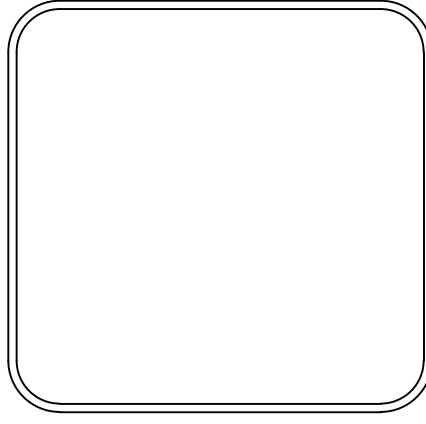
PROJECT NO.
03-17-ST-163

SHEET NO.
C3

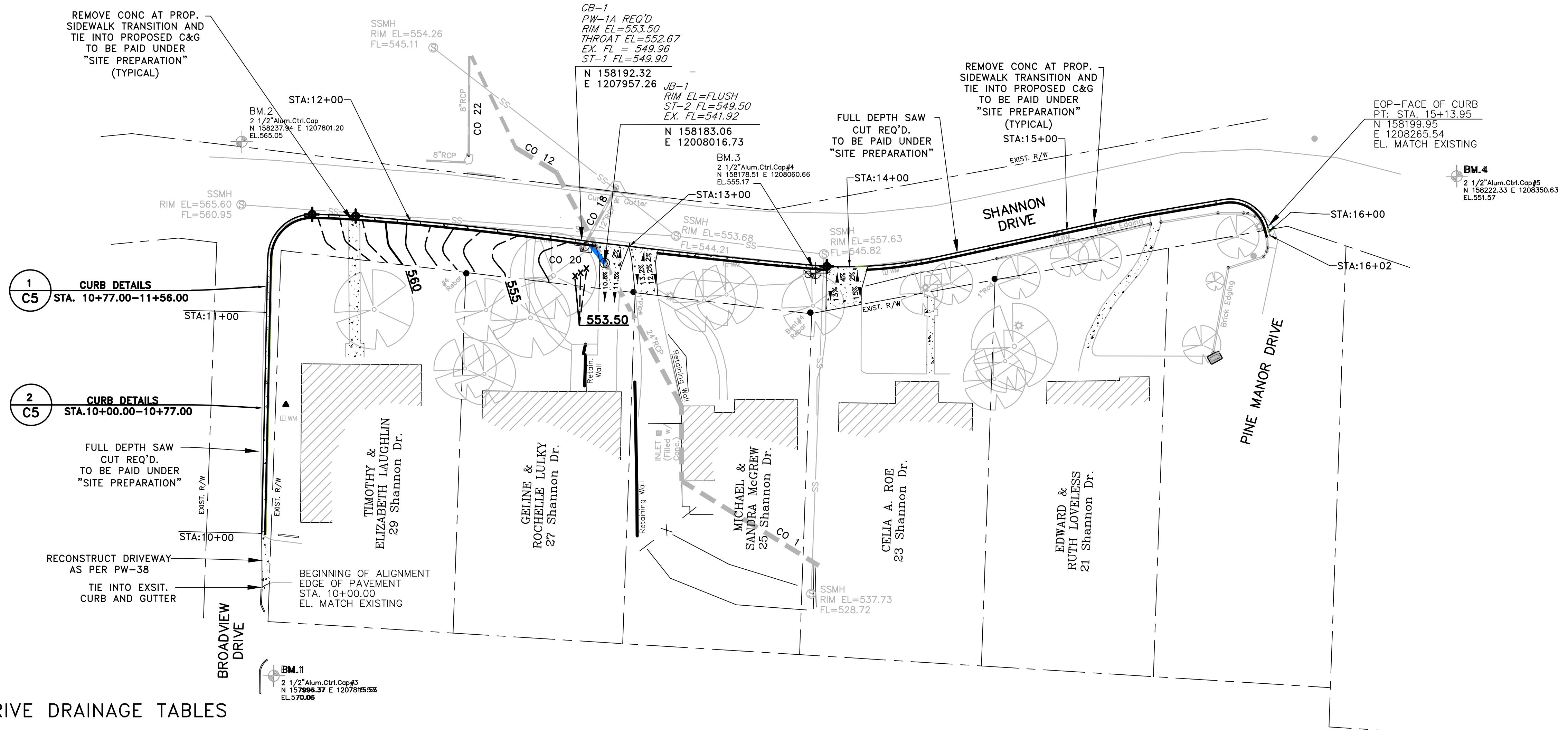
REVISIONS	DATE

CITY OF LITTLE ROCK, ARKANSAS
SHANNON DR. DRAINAGE IMPROVEMENTS
 PROPOSED

DEPARTMENT OF PUBLIC WORKS
 CIVIL ENGINEERING
 701 W. MARKHAM
 LITTLE ROCK, ARKANSAS 72201



DRAWN BY
 DESIGNED JRH
 CHECKED JRH
 DATE 1/15/19
 SCALE 1"=20'
 PROJECT NO. 03-17-ST-163
 SHEET NO. C4



SHANNON DRIVE DRAINAGE TABLES

Conduit Table

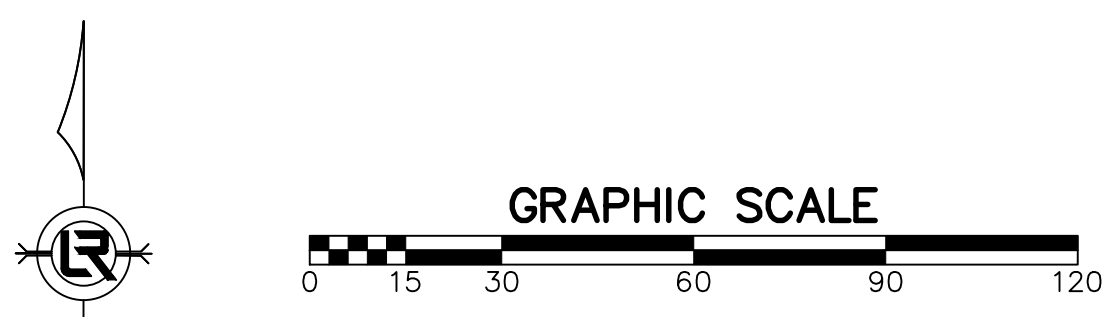
Label	Start Node	Invert (Start) (ft)	Stop Node	Invert (Start) (ft)	Length (Scaled) (ft)	Slope (Calculated) (ft/ft)	Section Type	Diameter (in)	Manning's n	Flow (cfs)	Velocity (ft/s)	Depth (Out) (ft)	Capacity (Full)	Flow / Capacity (Design) (%)	Depth (Normal) / Rise (%)
CO-1	JB-1	541.90	H-1	532.83	179.90	0.05	Circle	24.00	0.013	27.23	16.50	1.12	50.59	53.80	52.20
CO-12	CB-1	547.66	JB-1	545.30	46.10	0.05	Circle	21.00	0.013	30.34	16.73	1.87	35.89	84.50	70.50
CO-18	CB-106	550.60	CB-5	549.96	28.20	0.023	Circle	12.00	0.013	2.93	6.98	0.84	5.37	54.60	52.70
CO-20	CB-5	549.96	JB-1	549.50	12.50	0.037	Circle	18.00	0.013	4.77	9.35	0.58	20.18	23.60	33.10
CO-22	CB-102	554.20	CB-1	548.33	45.20	0.13	Circle	8.00	0.013	2.21	12.52	1.05	4.35	50.70	50.40

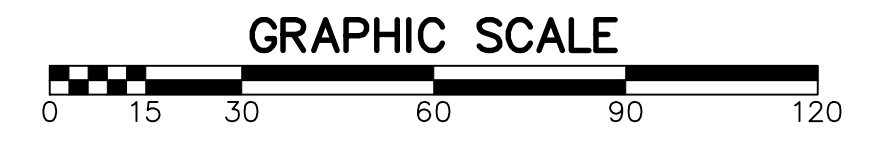
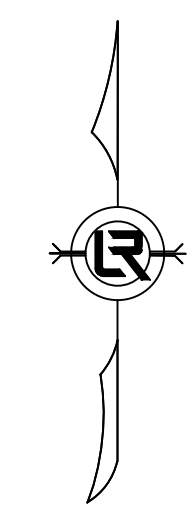
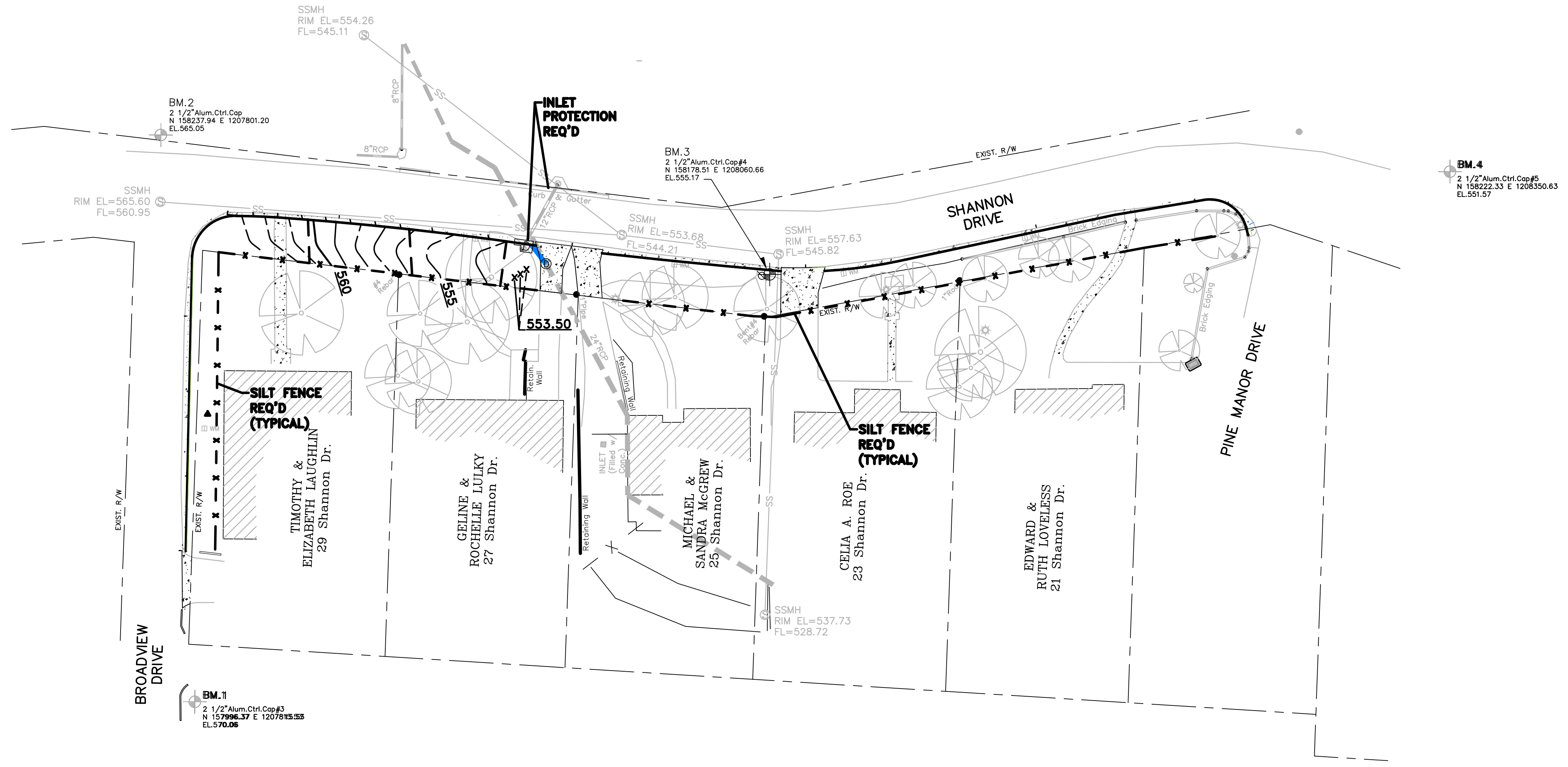
Catch Basin Table

Label	Elevation (Rim) (ft)	Elevation (Invert) (ft)	Inlet Type	Capture Efficiency	Flow (Captured) (cfs)	Hydraulic Grade Line (In) (ft)	Spread / Top
CB-5	553.17	549.96	Catalog Inlet	100	2.60	550.80	17.90

Outfall Table

Label	Elevation (Ground) (ft)	Elevation (Invert) (ft)	Inlet Type	Flow Total (CFS)
H-1	536.80	532.83	EX. HW	27.07

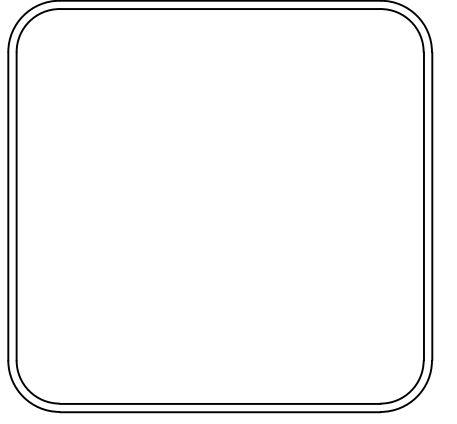




REVISIONS	DATE

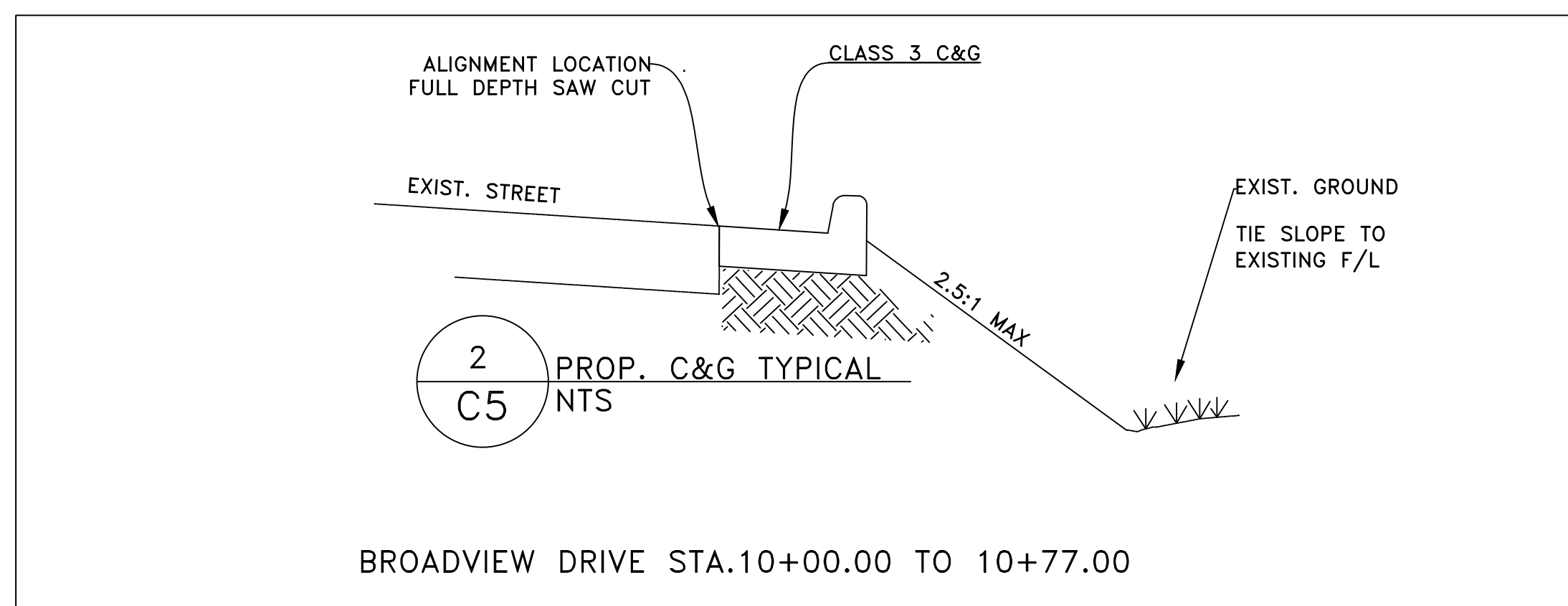
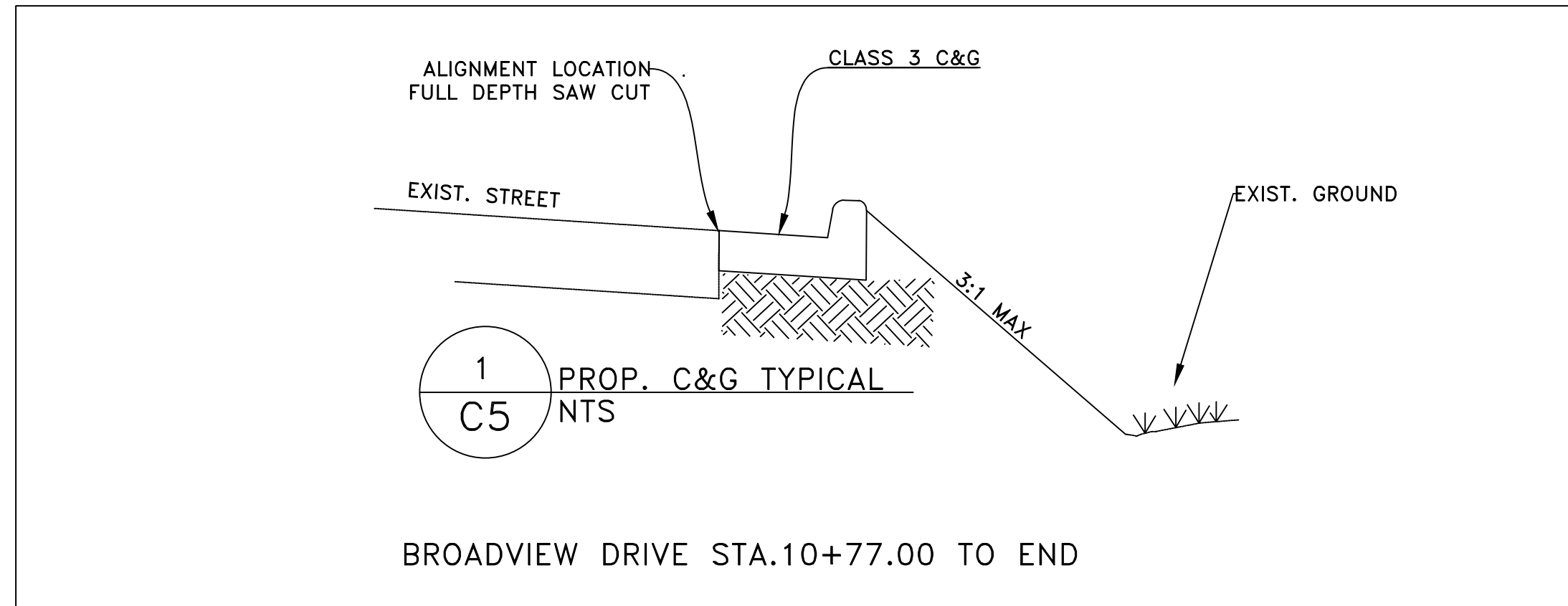
CITY OF LITTLE ROCK, ARKANSAS
SHANNON DR. DRAINAGE IMPROVEMENTS
EROSION CONTROL

DEPARTMENT OF PUBLIC WORKS
CIVIL ENGINEERING
701 W. MARKHAM
LITTLE ROCK, ARKANSAS 72201



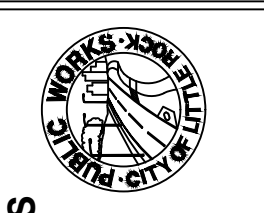
DRAWN BY
DESIGNED
JRH
CHECKED
JRH
DATE
1/15/19
SCALE
1"=20'
PROJECT NO.
03-17-ST-163
SHEET NO.
C5

REVISIONS	DATE

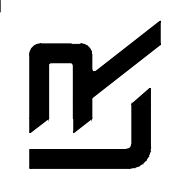


CITY OF LITTLE ROCK, ARKANSAS
SHANNON DR. DRAINAGE IMPROVEMENTS

DETAILS



DEPARTMENT OF PUBLIC WORKS
CIVIL ENGINEERING
701 W. MARKHAM
LITTLE ROCK, ARKANSAS 72201



DRAWN BY

DESIGNED
JRH

CHECKED
JRH

DATE
1/15/19

SCALE
1"=20'

PROJECT NO.
03-17-ST-163

SHEET NO.
C6