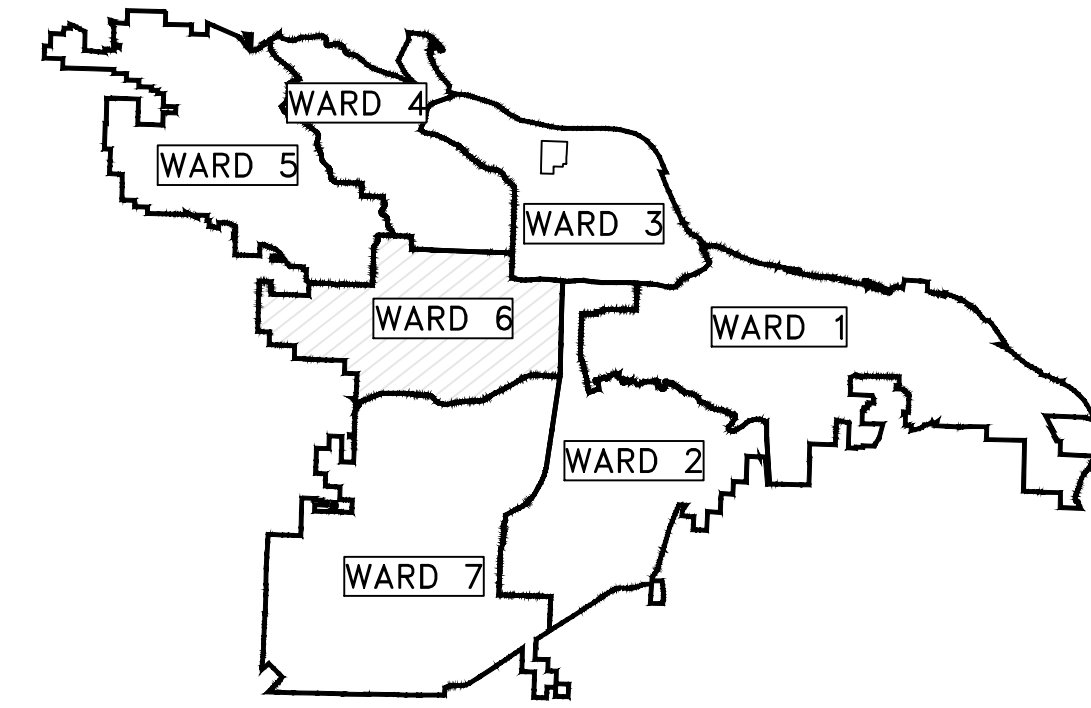


# CLR PROJECT 06-16-ST-262

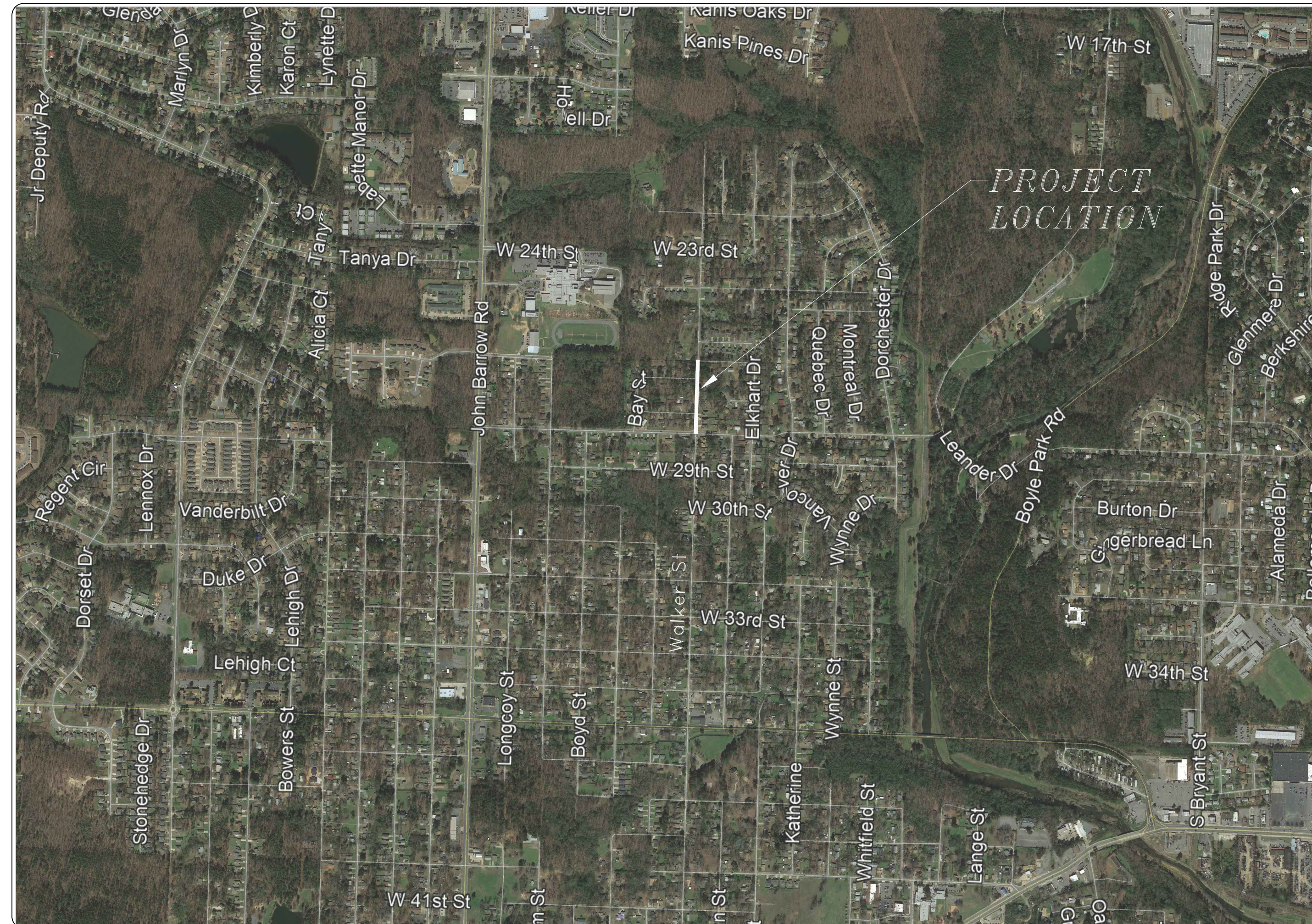
## WALKER STREET RECONSTRUCTION

### LITTLE ROCK, ARKANSAS



PROJECT LOCATION - WARD 6

SHEET NO.	TITLE
C1	COVER SHEET
C2	GENERAL NOTES, LEGEND AND QUANTITIES
C3	TYPICAL SECTION
C4	60% PLAN
C5	60% PROFILE
C6	EROSION CONTROL



**2019-2021  
BOND PROGRAM**

DEPARTMENT OF PUBLIC WORKS  
CIVIL ENGINEERING  
701 WEST MARKHAM STREET  
LITTLE ROCK, ARKANSAS 72201



**HR** 320 Executive Court  
Suite 304  
Little Rock, AR 72205  
501.907.7153

REVISIONS	DATE

CITY OF LITTLE ROCK, ARKANSAS  
WALKER STREET RECONSTRUCTION

COVER SHEET

DEPARTMENT OF PUBLIC WORKS  
CIVIL ENGINEERING  
701 W. MARKHAM  
LITTLE ROCK, ARKANSAS 72201



SEAL

DRAWN BY BDC
DESIGNED JRH
CHECKED JRH
DATE 3/6/19
SCALE NTS

PROJECT NO.  
06-16-ST-262

SHEET NO.

C1

REVISIONS	DATE

**CITY OF LITTLE ROCK, ARKANSAS**  
**WALKER STREET RECONSTRUCTION**  
**GENERAL NOTES, LEGEND AND QUANTITIES**

**DEPARTMENT OF PUBLIC WORKS**  
**CIVIL ENGINEERING**  
**701 W. MARKHAM**  
**LITTLE ROCK, ARKANSAS 72201**



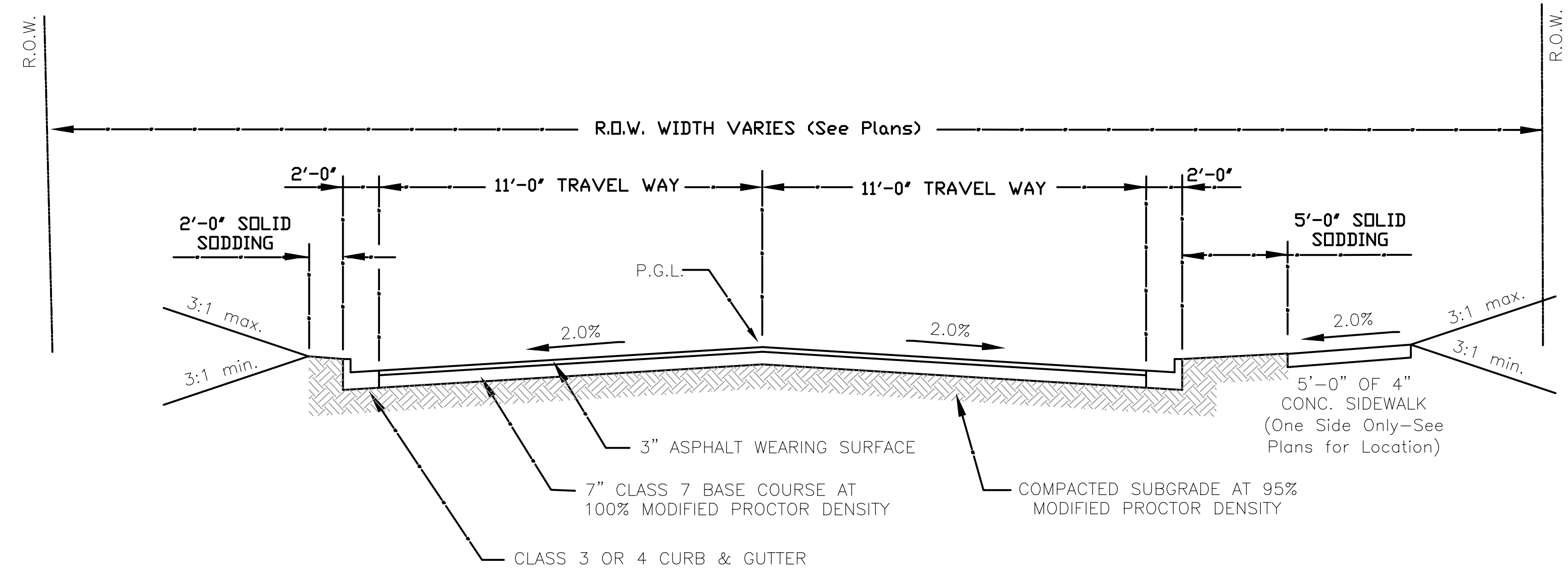
SEAL

**DRAWN BY**  
**BDC**  
**DESIGNED**  
**JRH**  
**CHECKED**  
**JRH**  
**DATE**  
**3/6/19**  
**SCALE**  
**1"=30'**  
**PROJECT NO.**  
**06-16-ST-262**  
**SHEET NO.**  
**C2**

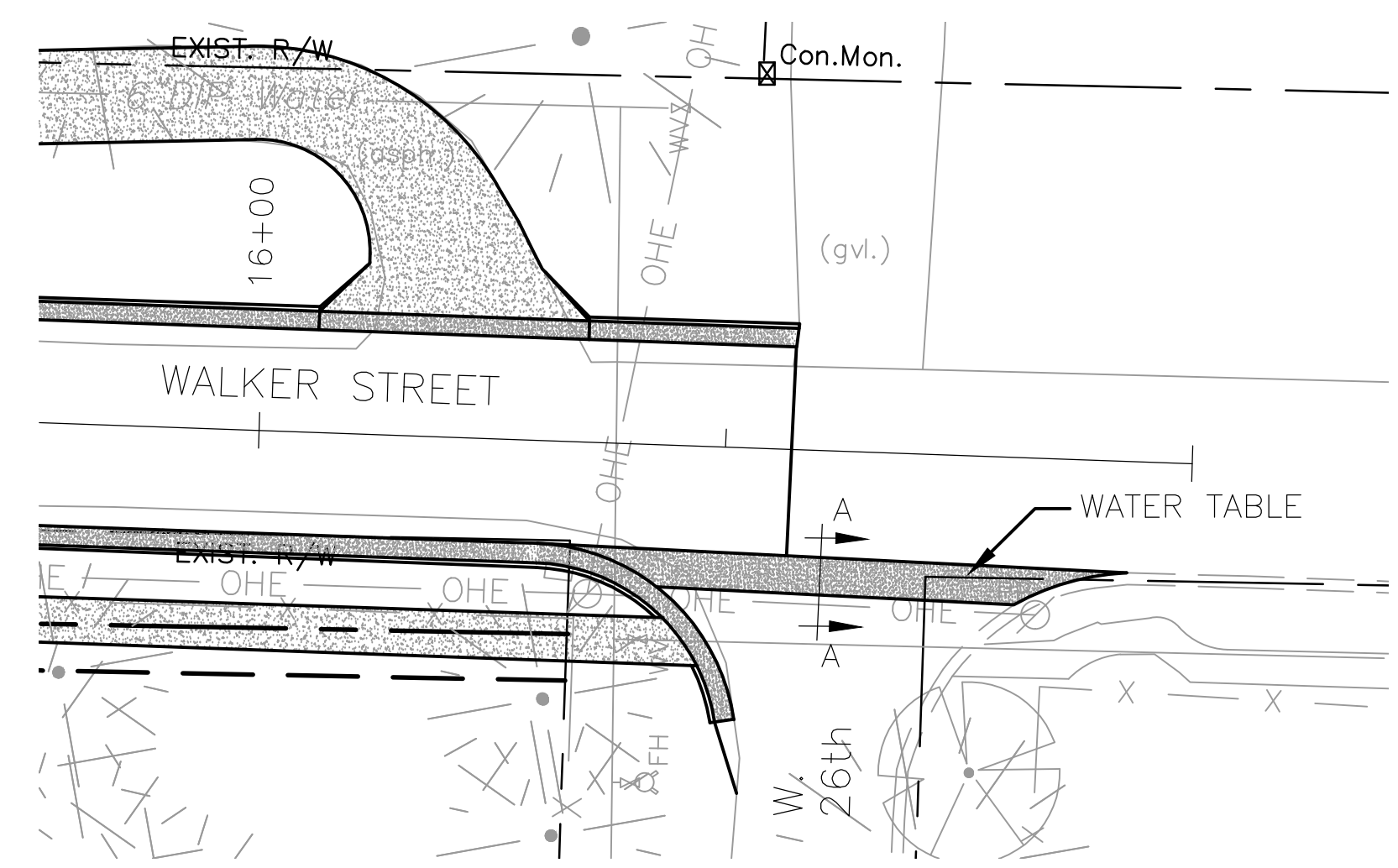
ESTIMATED QUANTITIES			
CLR PROJECT 06-16-ST-262			
WALKER STREET RECONSTRUCTION			
ITEM #	ITEM DESCRIPTION	UNIT	QUANTITY
		24-May-19	
2.01	SITE PREPARATION	LS	1
3.01	UNCLASSIFIED EXCAVATION	CY	1228
3.06	BORROW MATERIAL	CY	38
4.01	AGGREGATE BASE COURSE	TON	437
6.01	ASPHALT SURFACE COURSE	TON	263
7.06	CONCRETE DRIVEWAY (6" THICK), STANDARD FINISH	SF	3760
7.07	CONCRETE DRIVEWAY (6" THICK), EXPOSED AGG. FINISH	SF	142
8.03	CONCRETE CURB AND GUTTER (CLASS 3)	LF	1251
9.04	CONCRETE SIDEWALK (4" THICK)	SF	2659
10.01	JUNCTION BOX	EA	1
10.02	AREA INLET	EA	2
10.05	CURB INLET - 5' BOX	EA	6
10.07	WING 3' EXTENSION	EA	3
10.80	REBUILD INLET TOP	EA	2
13.15C	STORM DRAIN PIPE, 15" RCP	LF	78
13.18C	STORM DRAIN PIPE, 18" RCP	LF	245
14.01	SOLID SODDING, BERMUDA	SY	725
16.01	MAINTENANCE OF TRAFFIC	LS	1
17.01	PAVEMENT REPAIRS	SY	10
18.01	REMOVE AND REPLACE FENCE	LF	78
18.21	FENCE REMOVAL	LF	8
19.10	CLEANUP	LS	1
24.11	SILT FENCE	LF	2500
27.10	COLD MILLING ASPHALT	SY	27
606.18C	FLARED END SECTION 15" RCP	SY	2

EXISTING	PROPOSED
IRON ROD	○ IR
PK NAIL	○ PK
R.R. SPIKE	○ RR(Sp)
CONC. MONUMENT	□ CM
WATER VALVE	⊗ WV
WATER METER	□ WM
FIRE HYDRANT	∩ FH
GAS METER	⊗ GM
GAS VALVE	⊗ GV
CLEAN-OUT	○ CO
GUARD POST (BOLLARD)	● GP
SIGN POST	⊕
BENCHMARK	⊕
STORM SEWER MANHOLE	⊙
SANITARY SEWER MANHOLE	⊙
TELEPHONE MANHOLE	⊙
ELECTRIC MANHOLE	⊙
TELEPHONE BOX	⊙
ELECTRIC BOX	⊙
CABLE BOX	⊙
UTILITY POLE	⊙
GUY WIRE	⊙
LIGHT POLE	⊙
POST OR POLE (TYPE AS NOTED)	⊙
MAILBOX	⊙
DECIDUOUS TREE	⊙
EVERGREEN/CONIFEROUS TREE	⊙
BUSH	⊙
PROPERTY LINE	⊙
SETBACK LINE	⊙
EASEMENT LINE	⊙
CURB	⊙
FENCE	⊙
OVERHEAD ELECTRIC	⊙
OVERHEAD TELEPHONE	⊙
OVERHEAD CABLE	⊙
UNDERGROUND TELEPHONE	⊙
UNDERGROUND ELECTRIC	⊙
UNDERGROUND CABLE	⊙
WATER LINE	⊙
SEWER LINE	⊙
GAS LINE	⊙
STORM SEWER/CULVERT	⊙
EDGE OF WOODS	⊙
CONTOUR LINE	⊙
PROPOSED CONTOUR	⊙
PROPOSED SPOT ELEVATION	⊙
PROPOSED SPOT CURB ELEVATION	⊙
STORM SEWER - PIPE	⊙
STORM SEWER - MITERED END SECTION	⊙
STORM SEWER - GRATE INLET	⊙
STORM SEWER - JUNCTION BOX	⊙
STORM SEWER - FLARED END SECTION	⊙
STORM SEWER - HEADWALL	⊙
STORM SEWER - NO WING	⊙
STORM SEWER - SINGLE WING	⊙
STORM SEWER - DOUBLE WING	⊙
STORM SEWER - AREA INLET	⊙
GRADE BREAK LINE	⊙
HIGH POINT	⊙
LOW POINT	⊙
CUT LINE	⊙
FILL LINE	⊙
SANITARY SEWER PIPE	⊙
SANITARY SEWER MANHOLE	⊙
PROPOSED CURB	⊙
PROPOSED CONCRETE	⊙
CONSTRUCTION - ENTRANCE/EXIT	⊙
CHECK DAM	⊙
DIVERSION BERM	⊙
DOWNDRAIN STRUCTURE - TEMPORARY	⊙
ROCK DAM	⊙
SEDIMENT BARRIER - SILT FENCE	⊙
SEDIMENT BARRIER - GRAVEL RING	⊙
SEDIMENT BARRIER - BLOCK & GRAVEL	⊙
SEDIMENT BARRIER - BLOCK	⊙
TEMPORARY SEDIMENT BASIN	⊙
SILT FENCE - TYPE A	⊙
SILT FENCE - TYPE B	⊙
SILT FENCE - TYPE C	⊙
STORM DRAIN OUTLET PROTECTION	⊙
SURFACE ROUGHENING	⊙
DISTURBED AREA STABILIZATION - TEMPORARY STABILIZATION	⊙
DISTURBED AREA STABILIZATION - TEMPORARY GRASSING	⊙
DISTURBED AREA STABILIZATION - PERMANENT GRASSING	⊙
MATTING/BLANKETS	⊙

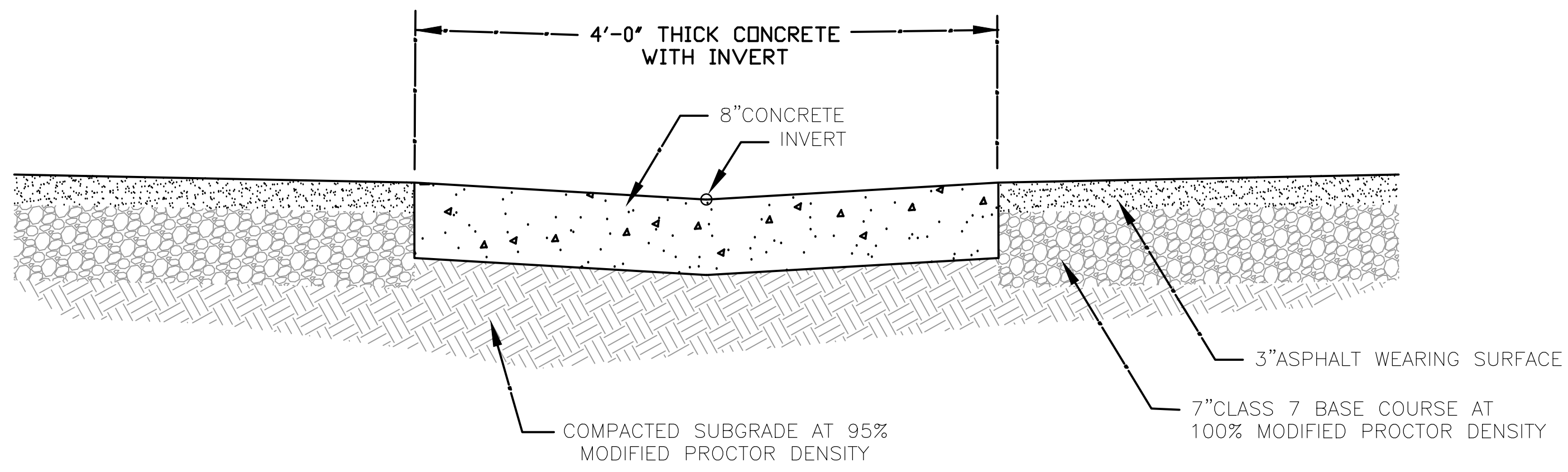
REVISIONS	DATE



WALKER STREET TYPICAL



WATER TABLE LAYOUT



WATER TABLE TYPICAL

CITY OF LITTLE ROCK, ARKANSAS  
WALKER STREET RECONSTRUCTION  
TYPICAL DETAILS

DEPARTMENT OF PUBLIC WORKS  
CIVIL ENGINEERING  
701 W. MARKHAM  
LITTLE ROCK, ARKANSAS 72201

SEAL

DRAWN BY BDC
DESIGNED JRH
CHECKED JRH
DATE 3/6/19
SCALE NTS
PROJECT NO. 06-16-ST-262
SHEET NO. C3

Conduit Table

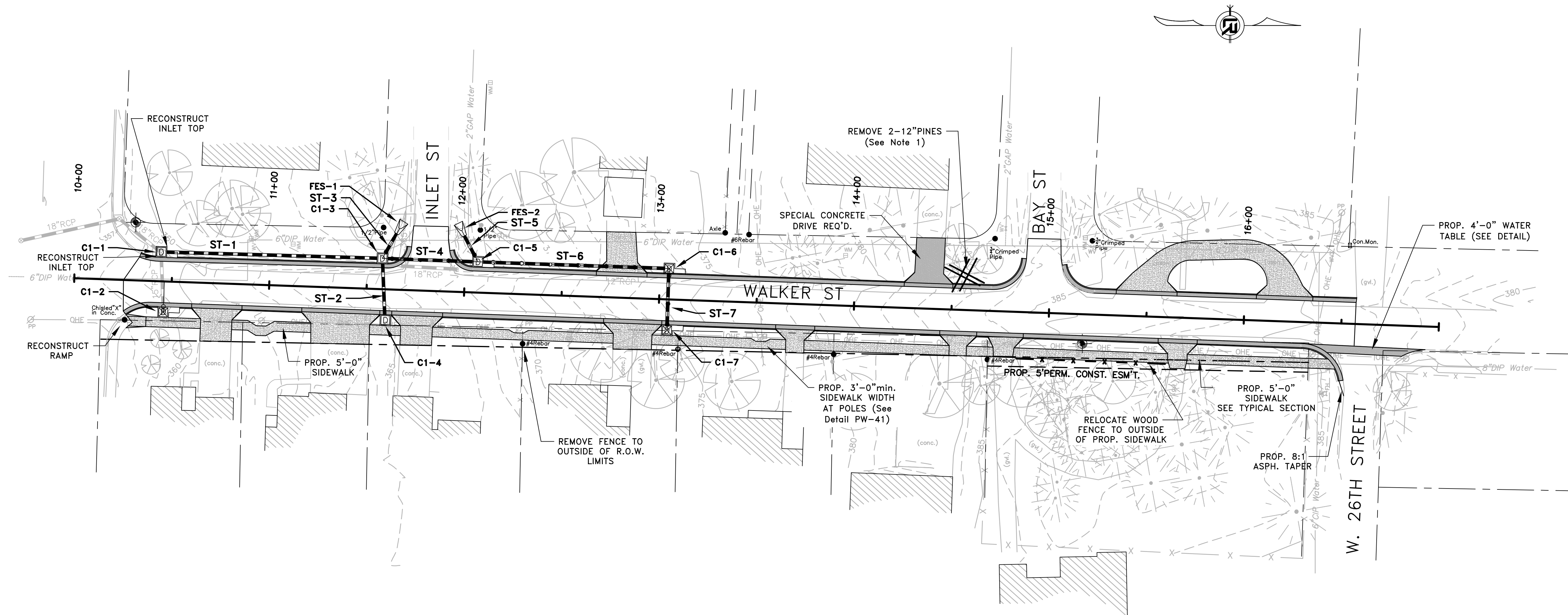
Label	Start Node	Invert (Start) (ft)	Stop Node	Invert (Start) (ft)	Length (Scaled) (ft)	Slope (Calculated) (ft/ft)	Section Type	Diameter (in)	Manning's n	Flow (cfs)	Velocity (ft/s)	Depth (Out) (ft)	Capacity (Full) (cfs)	Flow / Capacity (Design) (%)	Depth (Normal) / Rise (%)
CO-2	MH-1	536.54	H-1	532.83	72.70	0.05	Circle	24.00	0.013	27.13	16.51	1.11	51.10	53.10	51.80
CO-6	MH-3	541.90	MH-2	538.25	73.00	0.05	Circle	24.00	0.013	27.23	16.40	1.12	50.59	53.80	52.20
CO-8	MH-4	544.20	MH-3	541.90	46.40	0.05	Circle	24.00	0.013	30.34	16.77	1.27	50.34	60.30	56.00
CO-10	MH-5	545.30	MH-4	544.20	21.50	0.05	Circle	24.00	0.013	30.34	16.95	1.39	51.05	59.40	55.50
CO-12	CB-1	547.66	MH-5	545.30	46.10	0.05	Circle	21.00	0.013	30.34	16.73	1.87	35.89	84.50	70.50
CO-14	CB-103	567.50	CB-1	548.87	386.30	0.05	Circle	12.00	0.013	9.80	12.47	0.99	7.82	125.20	(N/A)
CO-16	CB-104	568.00	CB-103	567.50	46.80	0.011	Circle	12.00	0.013	7.84	9.98	4.50	3.68	212.90	(N/A)
CO-18	CB-106	550.60	CB-5	549.96	28.20	0.023	Circle	12.00	0.013	2.93	6.98	0.84	5.37	54.60	52.70
CO-20	CB-5	549.96	MH-3	549.50	12.50	0.037	Circle	18.00	0.013	4.77	9.35	0.58	20.18	23.60	33.10
CO-22	CB-102	554.20	CB-1	548.33	45.20	0.13	Circle	8.00	0.013	2.21	12.52	1.05	4.35	50.70	50.40
CO-24	MH-2	538.25	MH-1	536.54	34.20	0.05	Circle	24.00	0.013	27.17	16.39	1.23	50.59	53.70	52.20

Catch Basin Table

Label	Elevation (Rim) (ft)	Elevation (Invert) (ft)	Inlet Type	Capture Efficiency	Flow (Captured) (cfs)	Hydraulic Grade Line (In) (ft)	Spread / Top
CB-1	552.66	547.66	Catalog Inlet	100	18.34	549.38	52.00
CB-102	554.36	554.20	Catalog Inlet	100	2.21	554.36	20.30
CB-103	572.00	567.50	Catalog Inlet	100	1.96	572.00	9.50
CB-104	572.00	568.00	Catalog Inlet	100	7.84	572.00	37.30
CB-5	553.17	549.96	Catalog Inlet	100	2.60	550.80	17.90
CB-106	553.64	550.60	Catalog Inlet	100	2.93	551.33	19.30

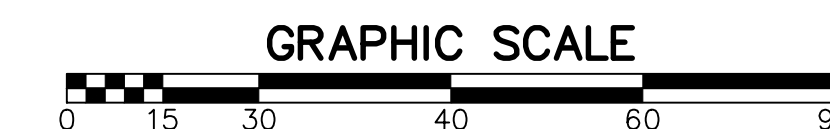
Outfall Table

Label	Elevation (Ground)	Elevation (Invert) (ft)	Inlet Type	Flow Total (CFS)
H-1	536.80	532.83	EX. HW	27.07



GENERAL NOTES:

1. REMOVE AND HAUL OFF TREE, GRIND STUMPS TO 20" MINIMUM DEPTH. VOID TO BE FILLED AND COMPACTED WITH TOPSOIL. DISTURBED GROUND TO BE GRADED TO MATCH EXISTING AND TO PROVIDE POSITIVE DRAINAGE. DISTURBED GROUND TO BE SODDED TO MATCH EXISTING GRASS.
2. ALL DISTURBED AREAS TO BE CLEANED OF AN DEBRIS, GRADED, AND SODDED. SOD TO MATCH EXISTING GRASS.
3. FIELD LOCATE ALL IRRIGATION SYSTEMS PRIOR TO CONSTRUCTION. RELOCATE OUTSIDE OF CONSTRUCTION LIMITS. COORDINATE WITH OWNERS. TO BE PAID UNDER "SITE PREPARATION".



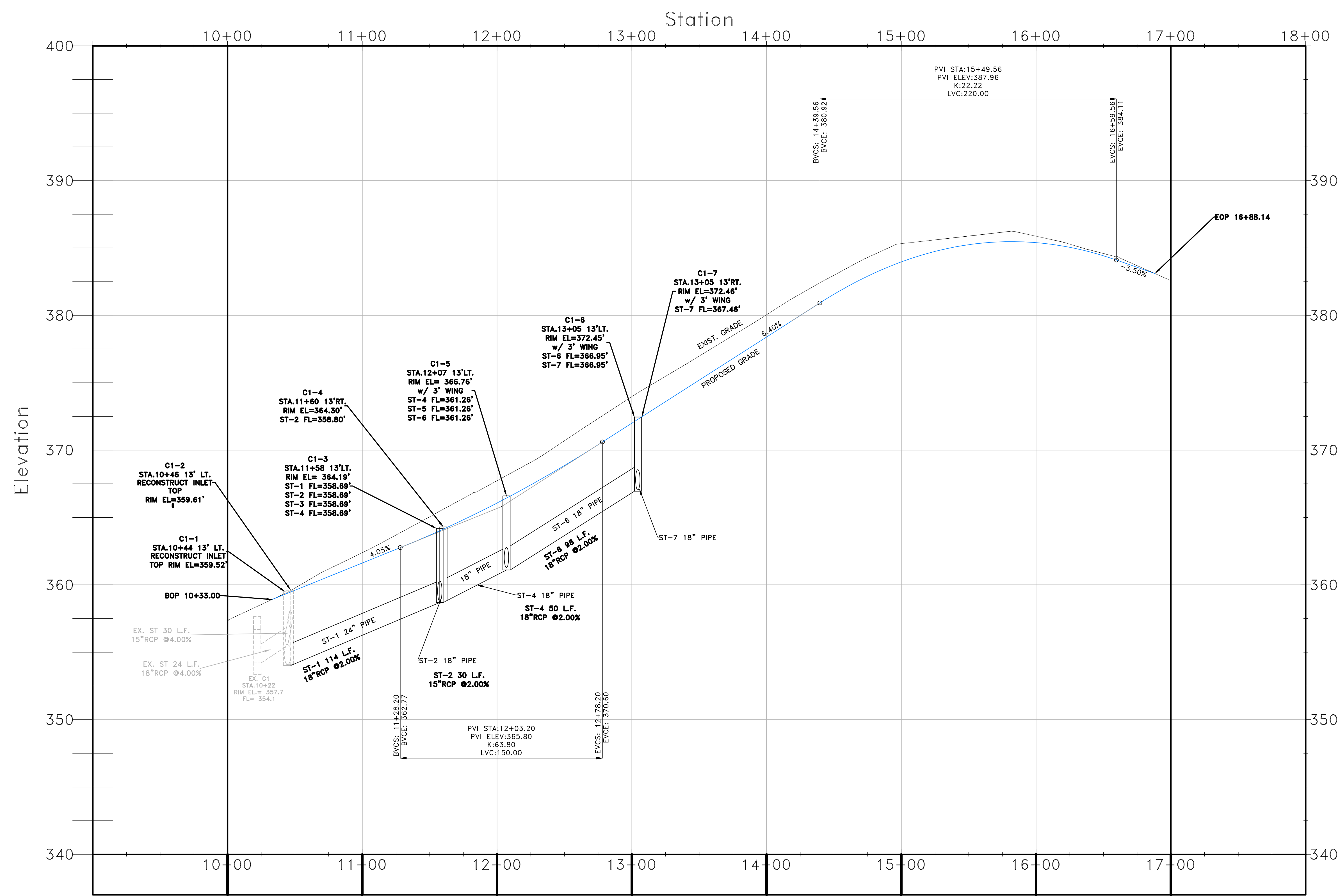
REVISIONS	DATE

CITY OF LITTLE ROCK, ARKANSAS  
**WALKER STREET RECONSTRUCTION**  
 60% PLAN

DEPARTMENT OF PUBLIC WORKS  
 CIVIL ENGINEERING  
 701 W. MARKHAM  
 LITTLE ROCK, ARKANSAS 72201

SEAL

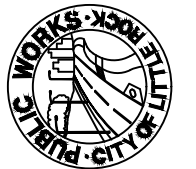

DRAWN BY  
 BDC  
 DESIGNED  
 JRH  
 CHECKED  
 JRH  
 DATE  
 3/6/19  
 SCALE  
 1"=30'  
 PROJECT NO.  
 06-16-ST-262  
 SHEET NO.  
**C4**



REVISIONS	DATE

CITY OF LITTLE ROCK, ARKANSAS  
 WALKER STREET RECONSTRUCTION  
 60% PROFILE

DEPARTMENT OF PUBLIC WORKS  
 CIVIL ENGINEERING  
 701 W. MARKHAM  
 LITTLE ROCK, ARKANSAS 72201

SEAL

DRAWN BY BDC
DESIGNED JRH
CHECKED JRH
DATE 3/6/19
SCALE 1"=3'/30'
PROJECT NO. 06-16-ST-262
SHEET NO. C5

