

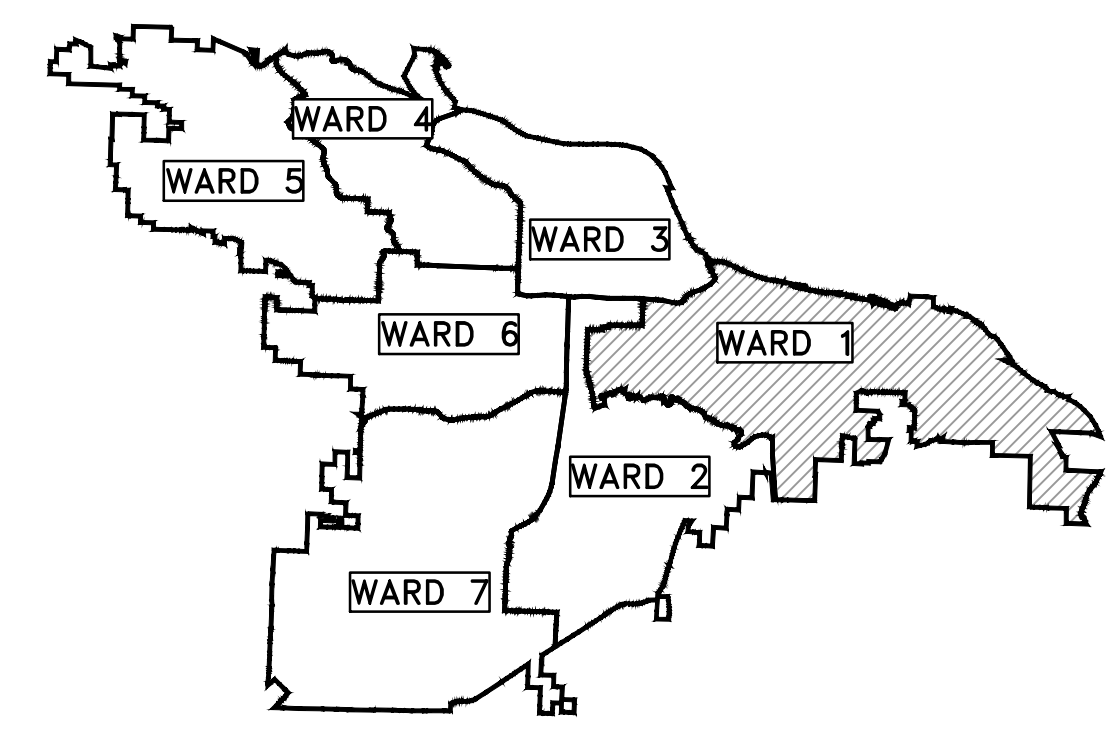
# CLR PROJECT 01-17-ST-47

## ABIGAIL ST IMPROVEMENTS (26TH TO 27TH)

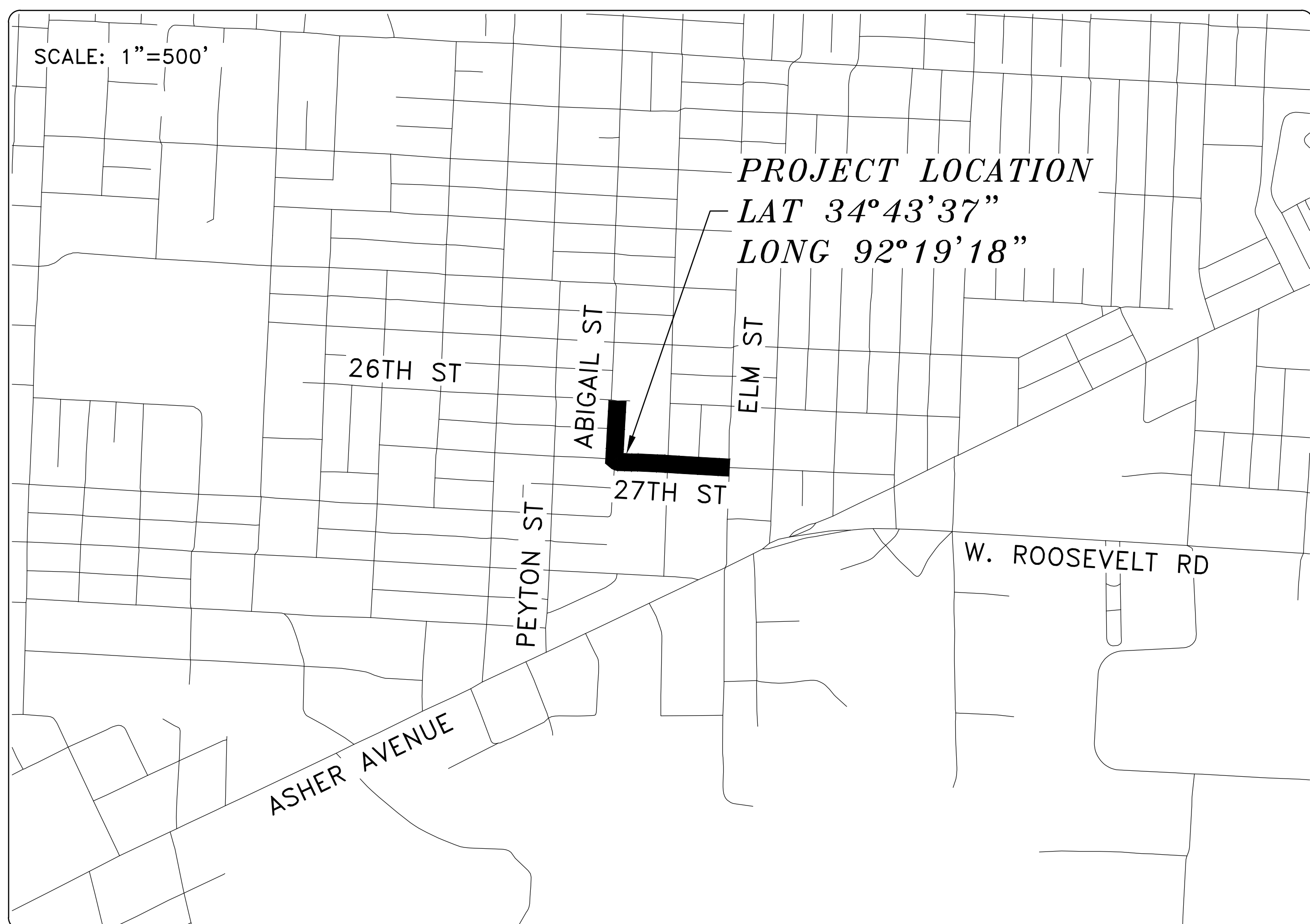
## 27TH ST IMPROVEMENTS (ABIGAIL TO ELM)

REVISIONS	DATE

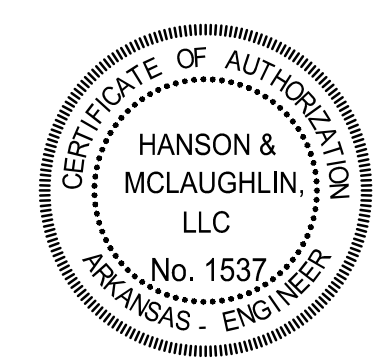
CITY OF LITTLE ROCK, ARKANSAS  
ABIGAIL ST IMPROVEMENTS / 27TH ST IMPROVEMENTS  
COVER SHEET




PROJECT LOCATION - WARD 1



SHEET NO.	TITLE
C1	COVER SHEET
C2	LEGEND AND QUANTITIES
C3	TYPICAL SECTIONS
C4	TYPICAL SECTIONS
C5	PLAN AND PROFILE 27TH STREET 1
C6	PLAN AND PROFILE 27TH STREET 2
C7	PLAN AND PROFILE ABIGAIL STREET



  
 DEPARTMENT OF PUBLIC WORKS  
 CIVIL ENGINEERING  
 701 W. MARKHAM  
 LITTLE ROCK, ARKANSAS 72201



**2019-2021  
BOND PROGRAM**

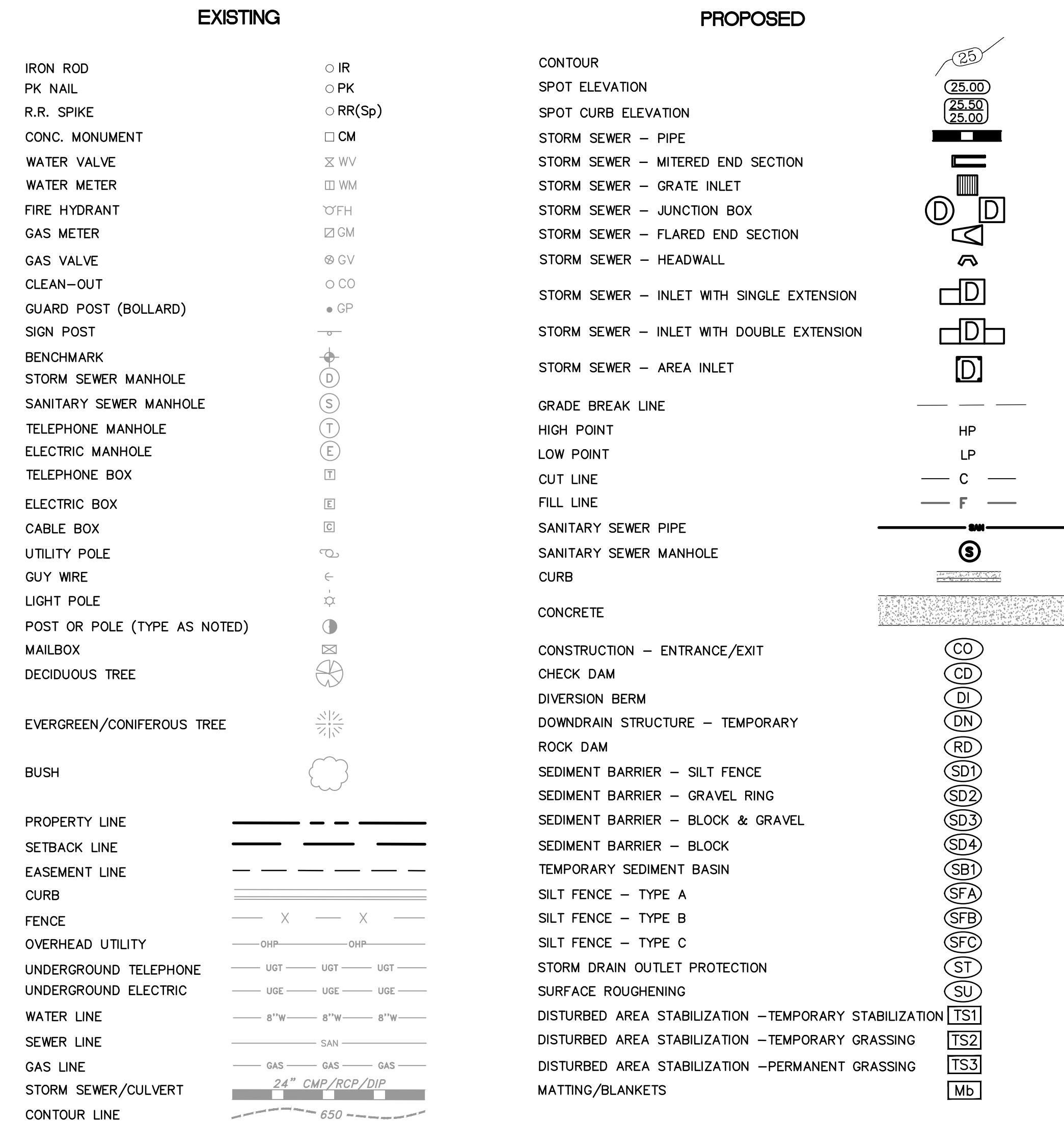
DEPARTMENT OF PUBLIC WORKS  
CIVIL ENGINEERING  
701 WEST MARKHAM STREET  
LITTLE ROCK, ARKANSAS 72201

**HANSON & MCLAUGHLIN, LLC**  
320 EXECUTIVE COURT, SUITE 202  
LITTLE ROCK, ARKANSAS 72205  
(501) 716-2850

<b>DRAWN BY</b>	KMH
<b>DESIGNED</b>	KMH
<b>CHECKED</b>	FJS
<b>DATE</b>	2-6-19
<b>SCALE</b>	N.T.S.
<b>PROJECT NO.</b>	01-17-ST-47
<b>SHEET NO.</b>	C1

CLR PROJECT 01-17-ST-47  
 ABIGAIL AND 27TH STREET IMPROVEMENTS  
 FEBRUARY 6, 2019

ITEM #	ITEM DESCRIPTION	UNIT	QUANTITY
2.01	Site Preparation (Incl. Mobilization)	LS	1
3.01	Unclassified Excavation	CY	539
3.06	Borrow Material	CY	315
3.40	Topsoil	CY	151
4.01	Aggregate Base Course	TON	308
5.01	Tack Coat	GAL	24
6.01	ACHM Surface Course	TON	277
7.04	Concrete Driveway (4" Thick), Standard Finish	SF	404
8.03	Concrete Curb and Gutter (Class 3)	LF	1,770
9.03	Sidewalk Crossover Bridge	CY	5
9.04	Concrete Sidewalk (4" Thick)	SF	454
9.30	Concrete Sidewalk "Turn Down" Wall	SF	0
9.40	Concrete Sidewalk "Turn Up" Wall	SF	0
10.04	Curb Inlet - 4' Box	EA	12
10.07	Wing 3' Extension	EA	9
10.80	Rebuild Inlet Top	EA	0
13.24C	Storm Drain Pipe, 24" RCP	LF	583
14.01	Solid Sodding (Bermuda)	SY	1,363
15.01	Shrub Replacement	EA	0
16.01	Maintenance of Traffic	LS	1
17.01	Pavement Repairs	SY	0
18.01	Remove and Replace Fence	LF	0
18.40	Handrail	LF	50
18.50	Access Ramp	SF	355
18.55	Water for Dust Control	GAL	10,000
19.01	Final Clean-Up	LS	1
22.10	Mailbox Relocation	EA	0
23.01	B Stone	TON	100
23.03	Granular Backfill	CY	0
24.01	Construction Entrance (CO)	EA	6
24.02	Check Dam (CD)	CY	20
24.06	Sediment Barrier, Silt Fence (SD1)	EA	0
24.09	Sediment Barrier, Block (SD4)	EA	10
24.11	Silt Fence - Type A (SFA)	LF	1,770
24.18	Disturbed Area Stabilization - Permanent Grassing (TS3)	AC	0
25.04	Fence Chain Link (4')	LF	40
26.10	Trench & Excavation Safety	LS	1
29.10	Project Information Kiosk	LS	1



REVISIONS	DATE

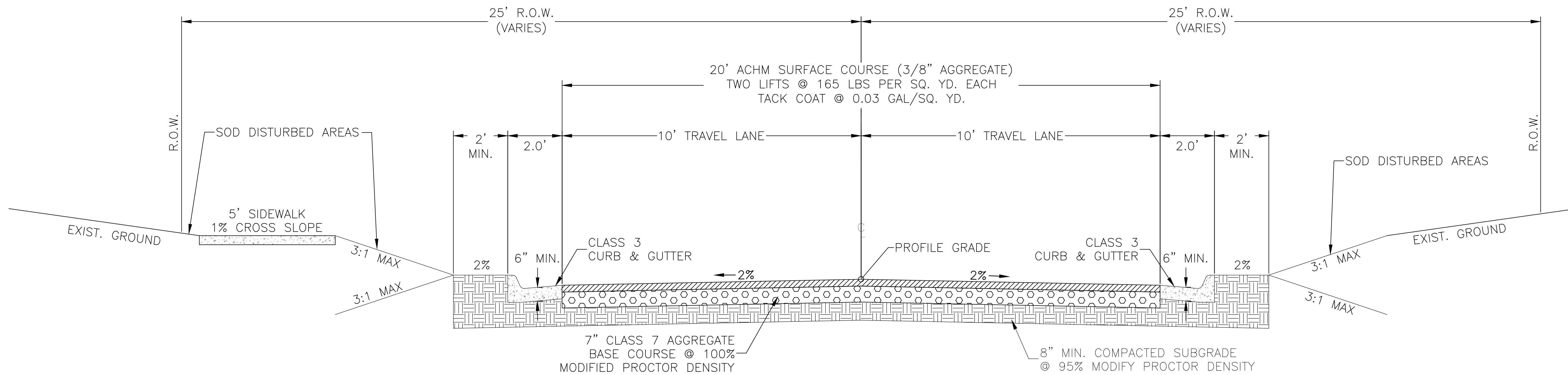
**CITY OF LITTLE ROCK, ARKANSAS**  
**ABIGAIL ST IMPROVEMENTS / 27TH ST IMPROVEMENTS**  
**LEGEND AND QUANTITIES**

**DEPARTMENT OF PUBLIC WORKS**  
**CIVIL ENGINEERING**  
 701 W. MARKHAM  
 LITTLE ROCK, ARKANSAS 72201



**DRAWN BY**  
 KMH  
**DESIGNED**  
 KMH  
**CHECKED**  
 FJS  
**DATE**  
 2-6-19  
**SCALE**  
 N.T.S.  
**PROJECT NO.**  
 01-17-ST-47  
**SHEET NO.**  
 C2

REVISIONS	DATE

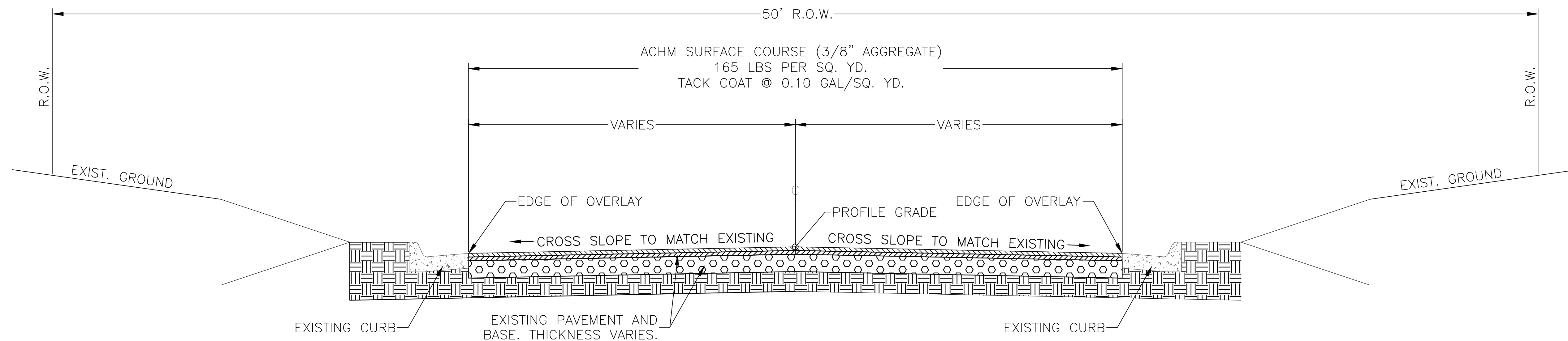


## RECONSTRUCTION SECTION

STA 0+00 TO STA 0+00

**NOTES:**

1. REMOVE EXISTING PAVEMENT.
2. UNDERCUT EXISTING SUBGRADE TO 24" BELOW DESIGN SUBGRADE.
3. BACKFILL WITH APPROVED BORROW IN 8" MAXIMUM LIFTS COMPACTED TO 95% MODIFIED PROCTOR.
4. CONSTRUCT NEW STREET IN ACCORDANCE WITH MINOR RESIDENTIAL MODIFICATION TO STANDARD DETAIL PW-22 (20' PAVEMENT).



## OVERLAY SECTION

STA 0+00 TO STA 0+00

CITY OF LITTLE ROCK, ARKANSAS  
**ABIGAIL ST IMPROVEMENTS / 27TH ST IMPROVEMENTS**  
 TYPICAL SECTIONS

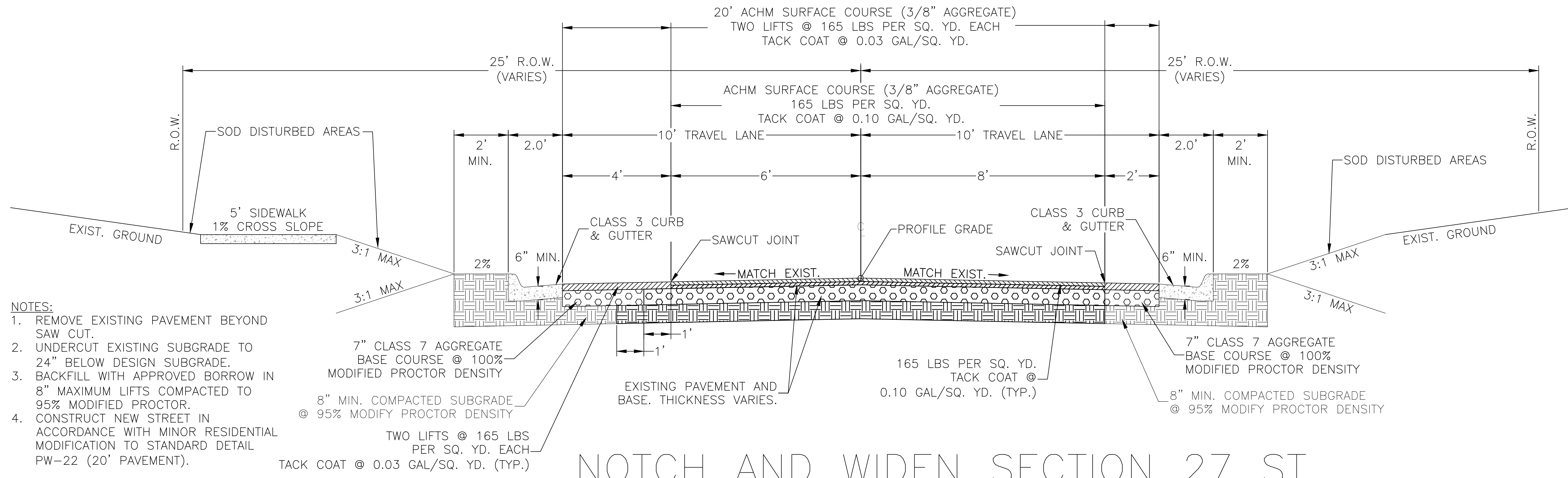
DEPARTMENT OF PUBLIC WORKS  
 CIVIL ENGINEERING  
 701 W. MARKHAM  
 LITTLE ROCK, ARKANSAS 72201



DRAWN BY  
**KMH**  
 DESIGNED  
**KMH**  
 CHECKED  
**FJS**  
 DATE  
**2-6-19**  
 SCALE  
**N.T.S.**  
 PROJECT NO.  
**01-17-ST-47**  
 SHEET NO.  
**C3**

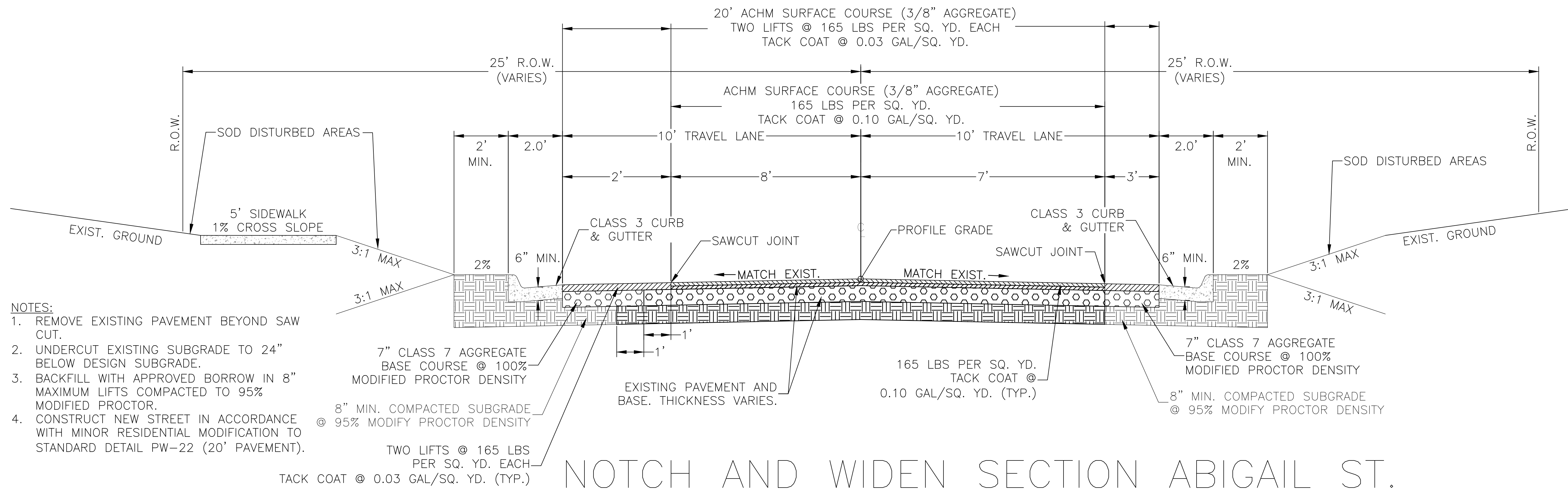
REVISIONS	DATE

CITY OF LITTLE ROCK, ARKANSAS  
 ABIGAIL ST IMPROVEMENTS / 27TH ST IMPROVEMENTS  
 TYPICAL SECTIONS



- NOTES:
1. REMOVE EXISTING PAVEMENT BEYOND SAW CUT.
  2. UNDERCUT EXISTING SUBGRADE TO 24" BELOW DESIGN SUBGRADE.
  3. BACKFILL WITH APPROVED BORROW IN 8" MAXIMUM LIFTS COMPACTED TO 95% MODIFIED PROCTOR.
  4. CONSTRUCT NEW STREET IN ACCORDANCE WITH MINOR RESIDENTIAL MODIFICATION TO STANDARD DETAIL PW-22 (20' PAVEMENT).

NOTCH AND WIDEN SECTION 27 ST.  
 STA 0+00 TO STA 0+00



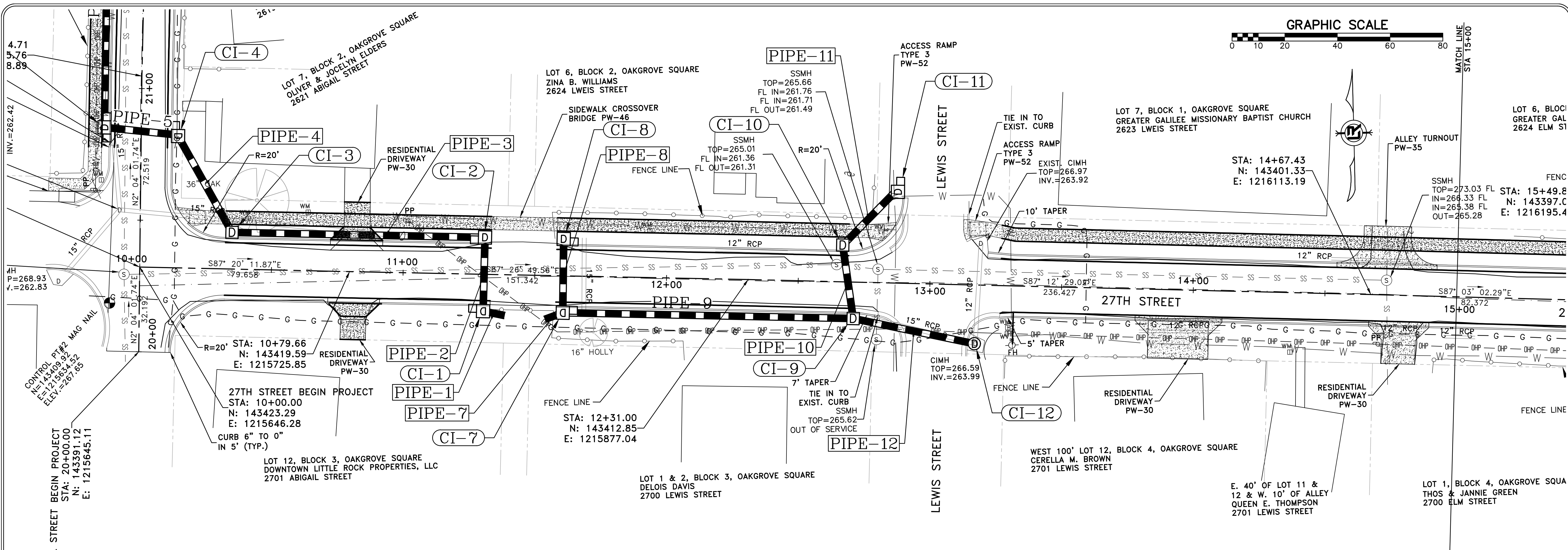
- NOTES:
1. REMOVE EXISTING PAVEMENT BEYOND SAW CUT.
  2. UNDERCUT EXISTING SUBGRADE TO 24" BELOW DESIGN SUBGRADE.
  3. BACKFILL WITH APPROVED BORROW IN 8" MAXIMUM LIFTS COMPACTED TO 95% MODIFIED PROCTOR.
  4. CONSTRUCT NEW STREET IN ACCORDANCE WITH MINOR RESIDENTIAL MODIFICATION TO STANDARD DETAIL PW-22 (20' PAVEMENT).

NOTCH AND WIDEN SECTION ABIGAIL ST.  
 STA 0+00 TO STA 0+00

DEPARTMENT OF PUBLIC WORKS  
 CIVIL ENGINEERING  
 701 W. MARKHAM  
 LITTLE ROCK, ARKANSAS 72201

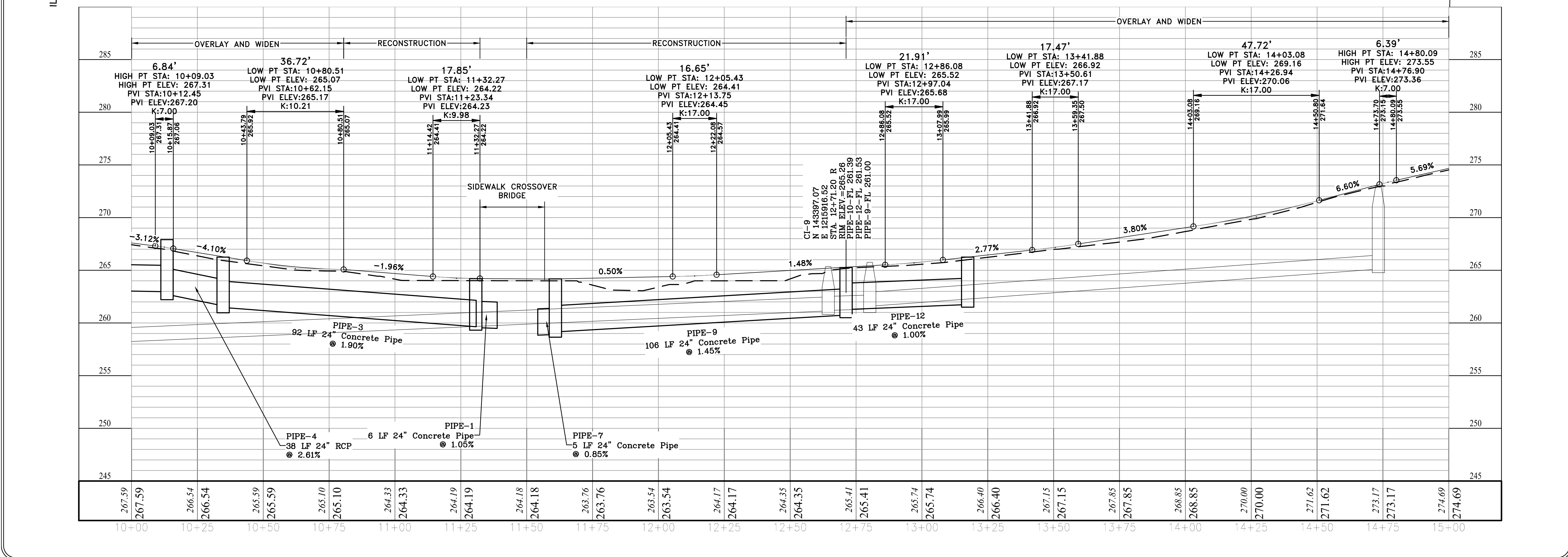


DRAWN BY  
**KMH**  
 DESIGNED  
**KMH**  
 CHECKED  
**FJS**  
 DATE  
**2-6-19**  
 SCALE  
**N.T.S.**  
 PROJECT NO.  
**01-17-ST-47**  
 SHEET NO.  
**C4**



REVISIONS	DATE

**CITY OF LITTLE ROCK, ARKANSAS**  
**ABIGAIL ST IMPROVEMENTS / 27TH ST IMPROVEMENTS**  
 PLAN AND PROFILE - 27TH STREET 1  
 STA 10+00 TO 15+00

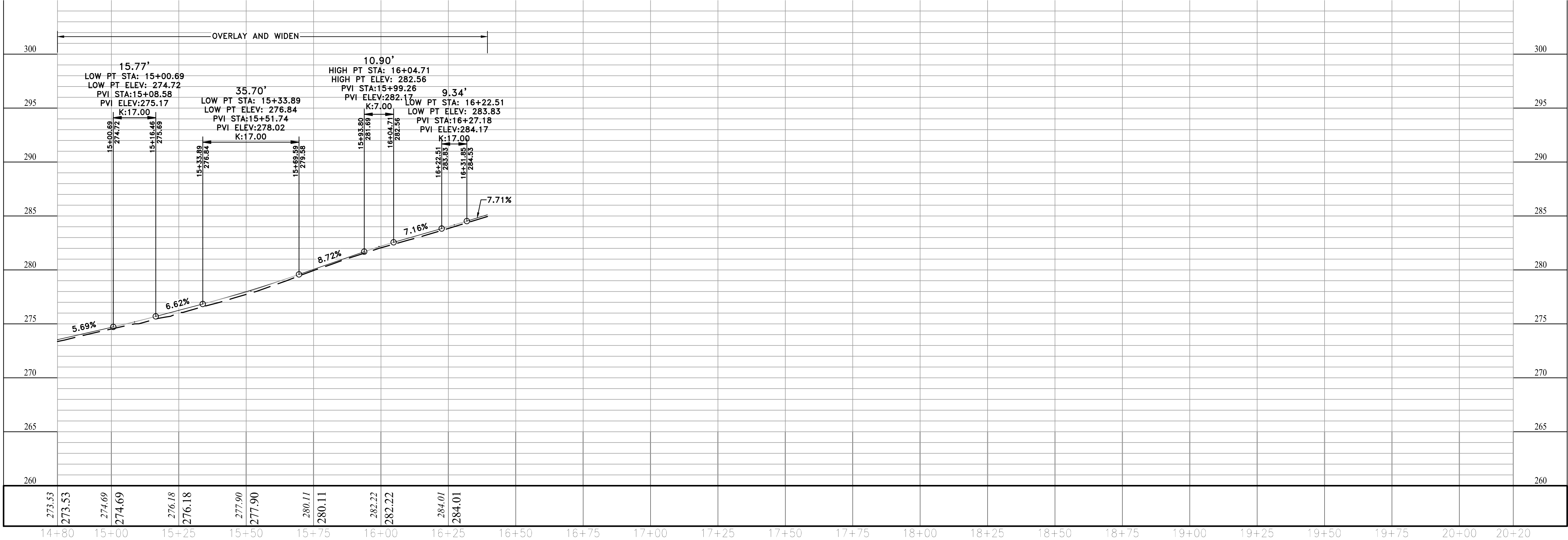
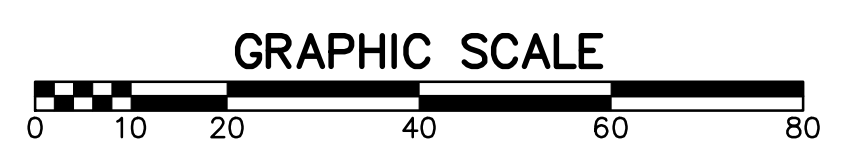
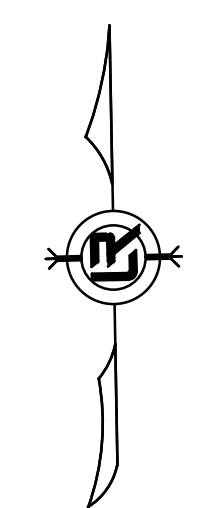
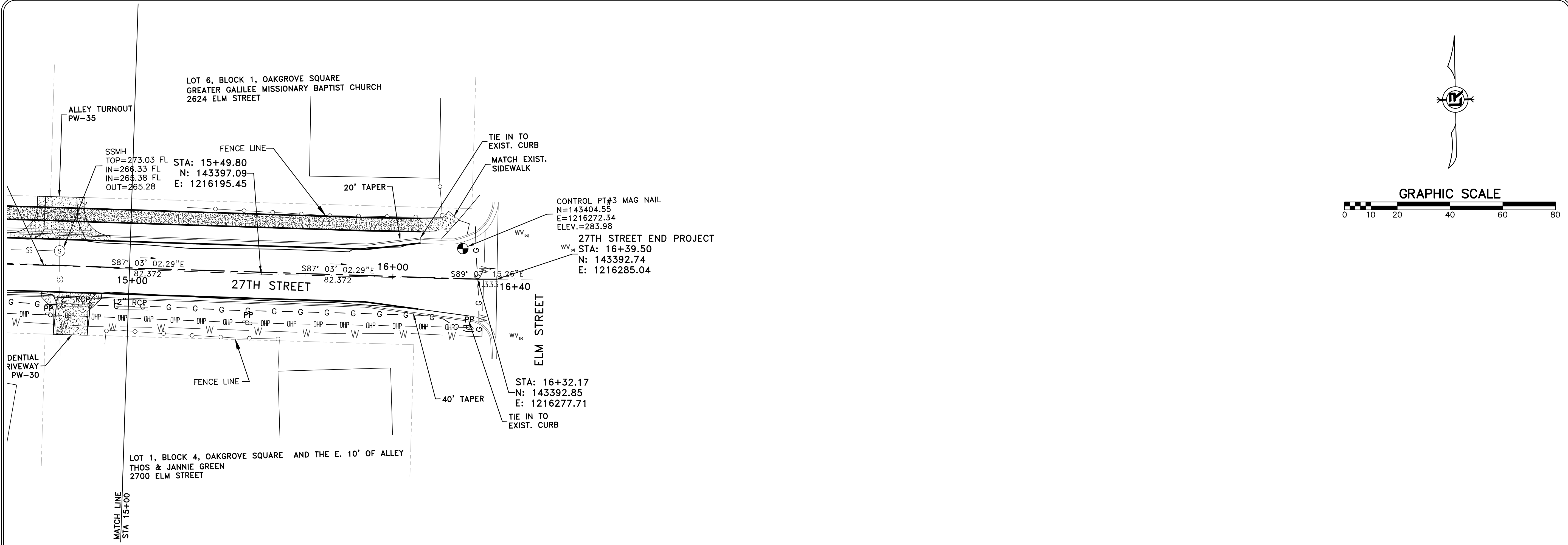


DEPARTMENT OF PUBLIC WORKS  
 CIVIL ENGINEERING  
 701 W. MARKHAM  
 LITTLE ROCK, ARKANSAS 72201



**DRAWN BY**  
KMH  
**DESIGNED**  
KMH  
**CHECKED**  
FJS  
**DATE**  
2-6-19  
**SCALE**  
1" = 20'  
**PROJECT NO.**  
01-17-ST-47  
**SHEET NO.**  
C5

REVISIONS	DATE

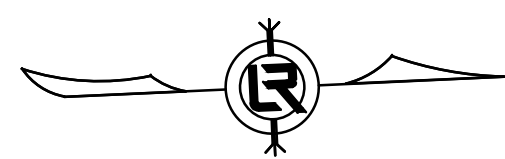
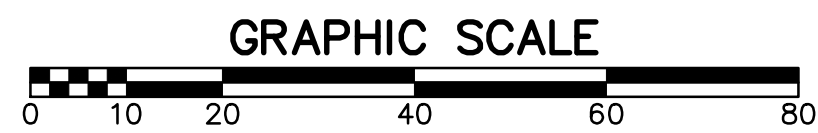


CITY OF LITTLE ROCK, ARKANSAS  
 ABIGAIL ST IMPROVEMENTS / 27TH ST IMPROVEMENTS  
 PLAN AND PROFILE - 27TH STREET 2  
 STA 15+00 TO 16+40

DEPARTMENT OF PUBLIC WORKS  
 CIVIL ENGINEERING  
 701 W. MARKHAM  
 LITTLE ROCK, ARKANSAS 72201



DRAWN BY  
 KMH  
 DESIGNED  
 KMH  
 CHECKED  
 FJS  
 DATE  
 2-6-19  
 SCALE  
 1" = 20'  
 PROJECT NO.  
 01-17-ST-47  
 SHEET NO.  
 C6



ABIGAIL STREET BEGIN PROJECT  
 STA: 20+00.00  
 N: 143391.12  
 E: 1215645.11

27TH STREET BEGIN PROJECT  
 STA: 10+00.00  
 N: 143423.29  
 E: 1215646.28

CONTROL PT#2 MAG NAIL  
 N=143406.95  
 E=1215634.52  
 ELEV.=267.65

SSMH TOP=267.75  
 FL IN E=258.35  
 FL IN N=256.95  
 FL OUT S=256.93  
 STA: 20+32.19  
 N: 143423.29  
 E: 1215646.28

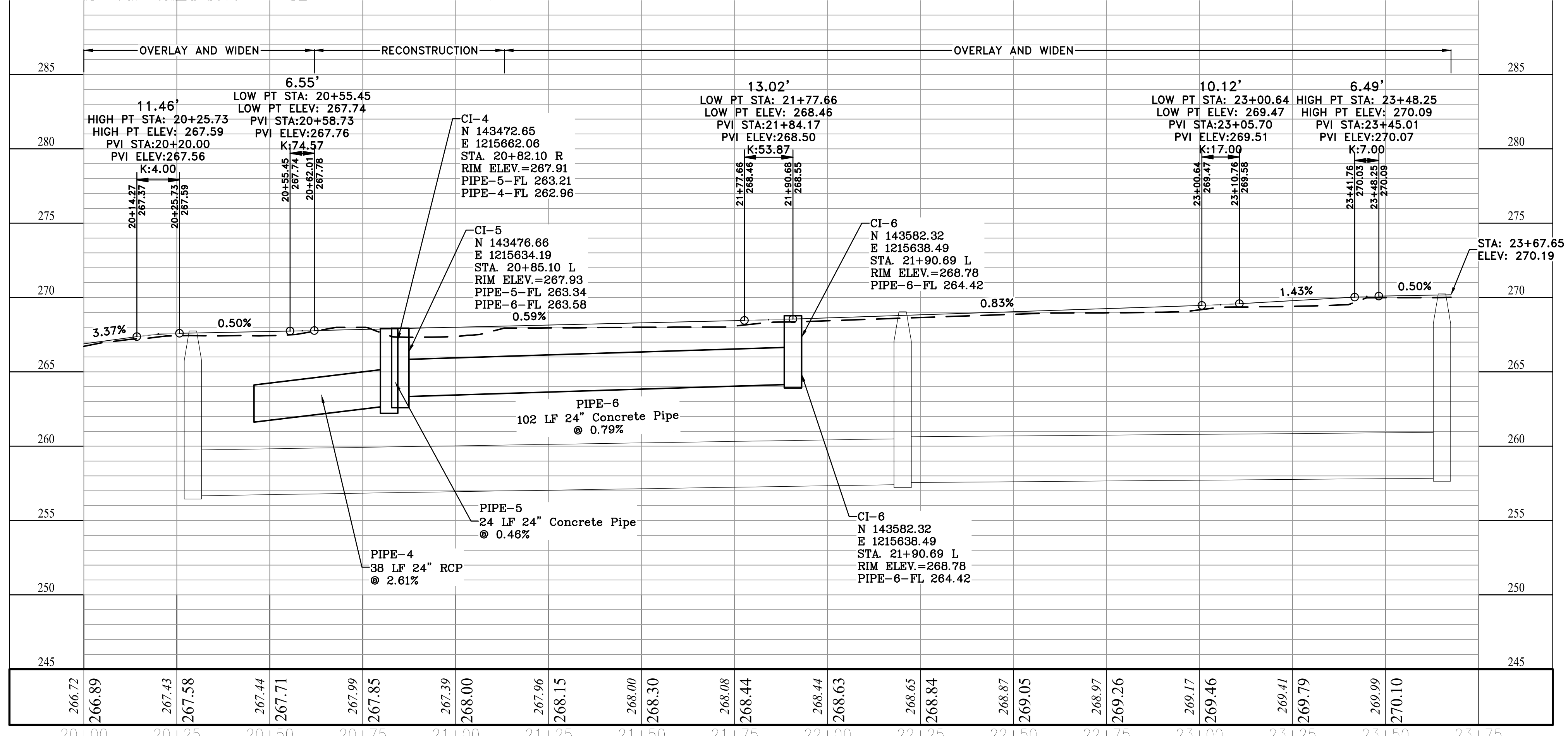
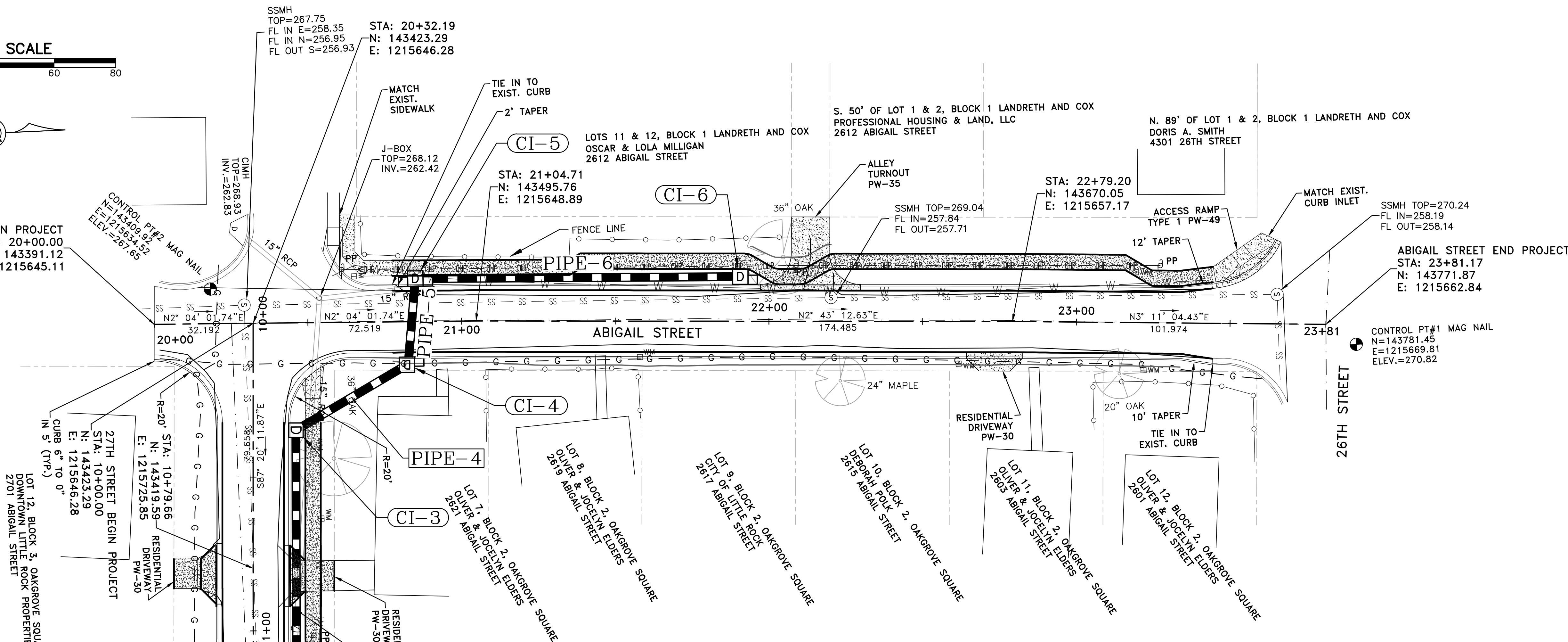
STA: 21+04.71  
 N: 143495.76  
 E: 1215648.89

STA: 22+79.20  
 N: 143670.05  
 E: 1215657.17

SSMH TOP=270.24  
 FL IN=258.19  
 FL OUT=258.14

ABIGAIL STREET END PROJECT  
 STA: 23+81.17  
 N: 143771.87  
 E: 1215662.84

CONTROL PT#1 MAG NAIL  
 N=143781.45  
 E=1215669.81  
 ELEV.=270.82



REVISIONS	DATE

CITY OF LITTLE ROCK, ARKANSAS  
 ABIGAIL ST IMPROVEMENTS / 27TH ST IMPROVEMENTS  
 PLAN AND PROFILE - ABIGAIL STREET  
 STA 20+00 TO 23+81

DEPARTMENT OF PUBLIC WORKS  
 CIVIL ENGINEERING  
 701 W. MARKHAM  
 LITTLE ROCK, ARKANSAS 72201



DRAWN BY  
 KMH  
 DESIGNED  
 KMH  
 CHECKED  
 FJS  
 DATE  
 2-6-19  
 SCALE  
 1" = 20'  
 PROJECT NO.  
 01-17-ST-47  
 SHEET NO.  
 C7