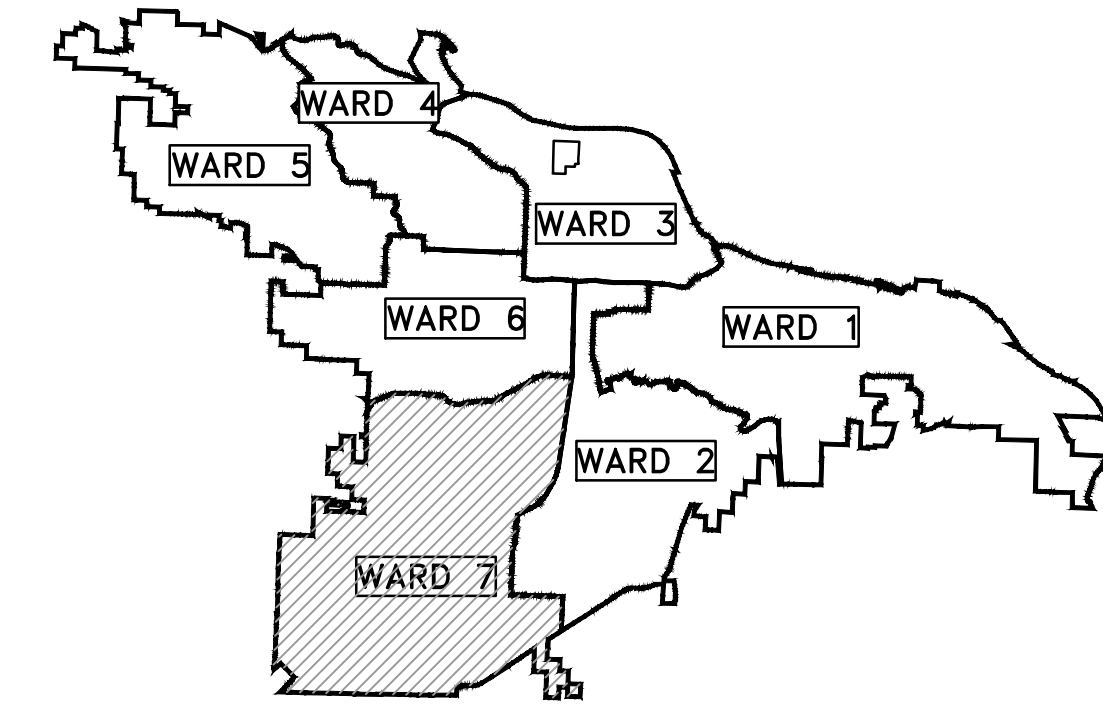


# CLR PROJECT 07-17-ST-293

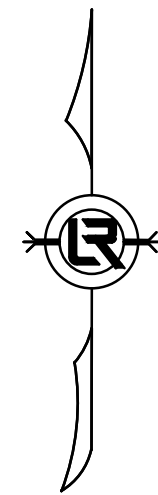
## EASTWOOD STREET RECONSTRUCTION

### (BRANDON STREET TO VINEWOOD LANE)

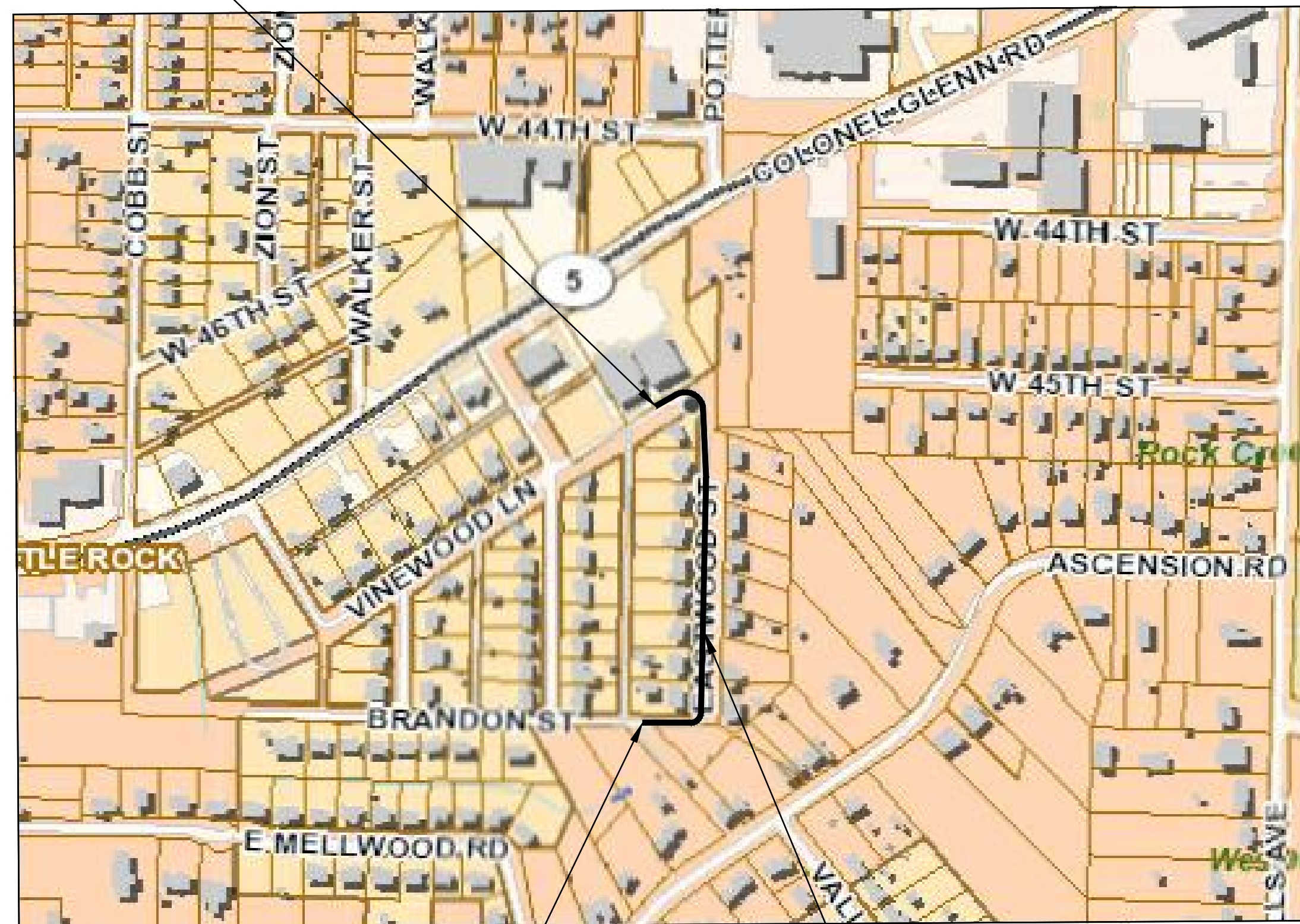


PROJECT LOCATION - WARD 7

SHEET NO.	TITLE
C1	COVER SHEET
C2	GENERAL NOTES, LEGEND AND QUANTITIES
C3	TYPICAL SECTION
C4	PLAN AND PROFILE SHEET (1)
C5	PLAN AND PROFILE SHEET (2)
C6	PRELIMINARY DRAINAGE AREA MAP



PROJECT END  
STATION 18+05



PROJECT START  
STATION 10+00

PROJECT  
LOCATION



**2019-2021**  
**BOND PROGRAM**

DEPARTMENT OF PUBLIC WORKS  
CIVIL ENGINEERING  
701 WEST MARKHAM STREET  
LITTLE ROCK, ARKANSAS 72201



**Know what's below.**  
**Call before you dig.**

15% PRELIMINARY DESIGN

FOR REVIEW ONLY

These documents are for Design Review and not intended for Construction, Bidding or Permit Purposes. They were prepared by, or under the supervision of:

DEREK A. WHITE P.E.# 98498      04/03/2019  
Date

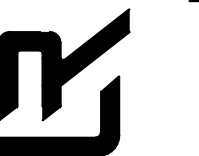
REVISIONS	DATE

CITY OF LITTLE ROCK, ARKANSAS  
EASTWOOD STREET RECONSTRUCTION

COVER SHEET



DEPARTMENT OF PUBLIC WORKS  
CIVIL ENGINEERING  
701 W. MARKHAM  
LITTLE ROCK, ARKANSAS 72201

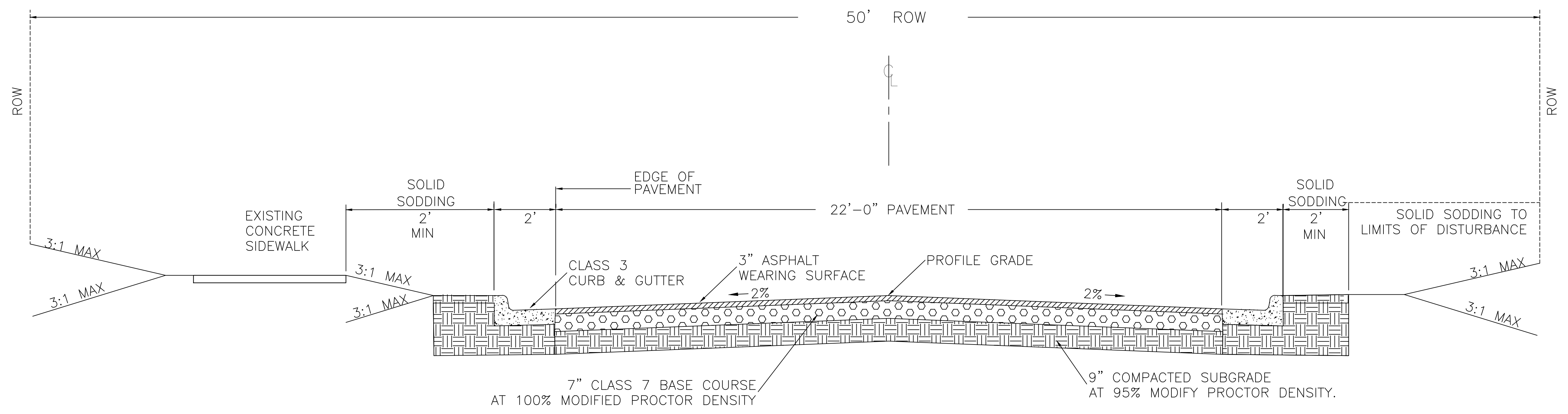


DRAWN BY KWS
DESIGNED CV
CHECKED DAW
DATE 04/03/2019
SCALE N.T.S.
PROJECT NO. 07-17-ST-293
SHEET NO. C1



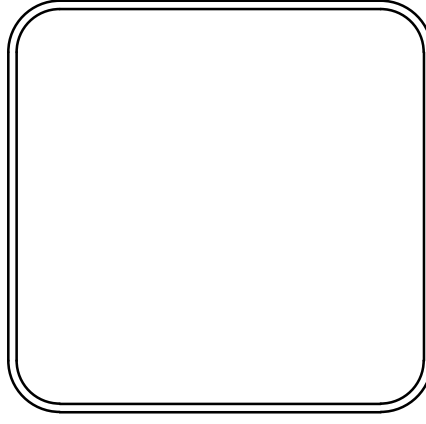
REVISIONS	DATE

CITY OF LITTLE ROCK, ARKANSAS  
 EASTWOOD STREET RECONSTRUCTION  
 TYPICAL SECTION

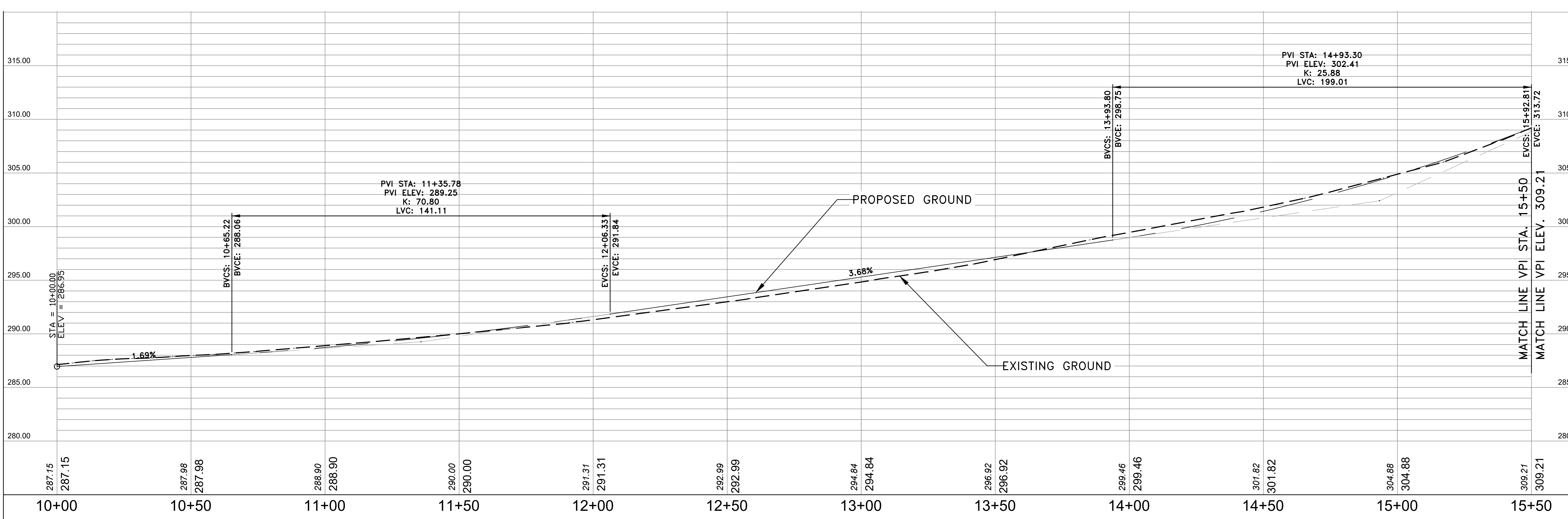
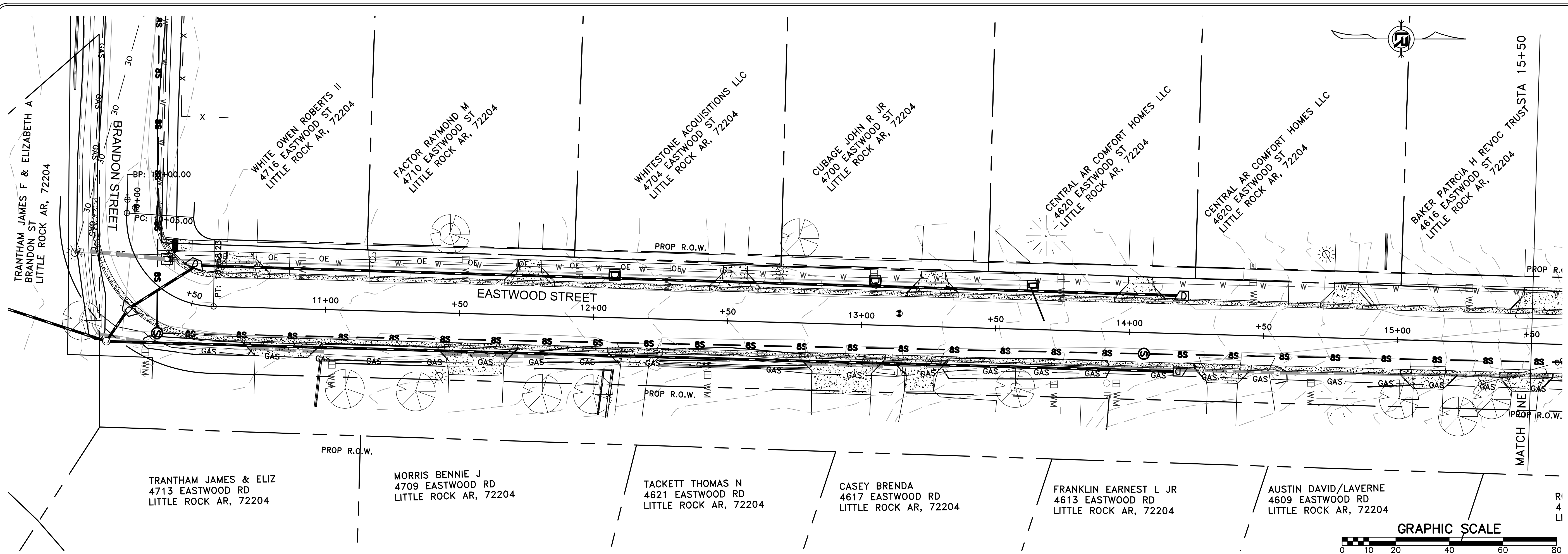


TYPICAL SECTION

DEPARTMENT OF PUBLIC WORKS  
 CIVIL ENGINEERING  
 701 W. MARKHAM  
 LITTLE ROCK, ARKANSAS 72201

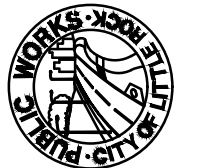


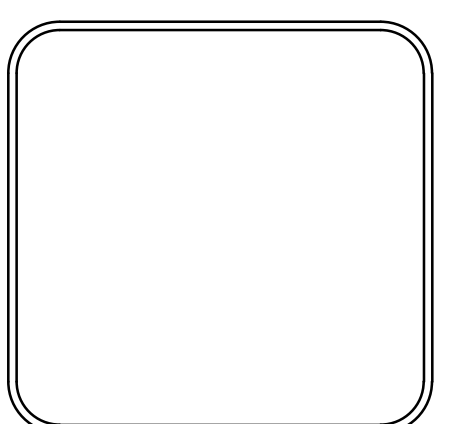
DRAWN BY	KWS
DESIGNED	CV
CHECKED	DAW
DATE	04/03/2019
SCALE	N.T.S.
PROJECT NO.	07-17-ST-293
SHEET NO.	C3



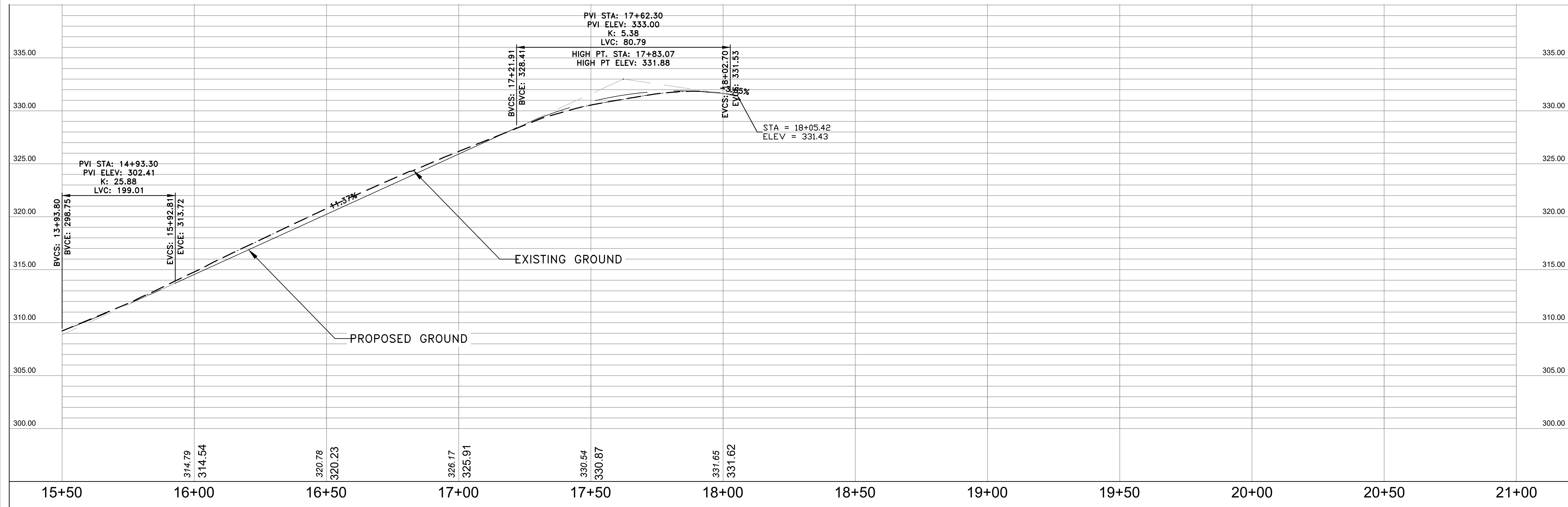
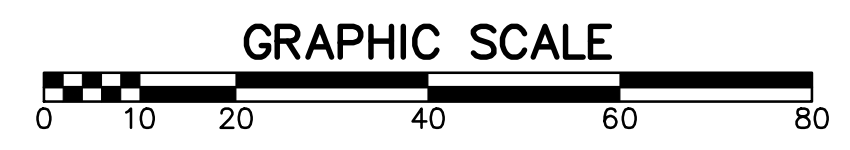
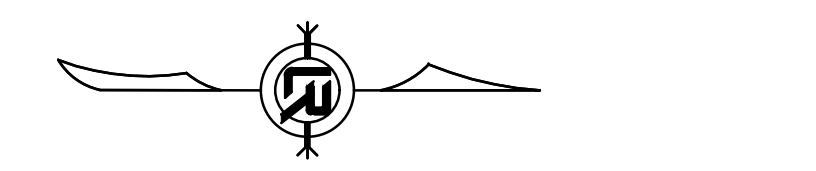
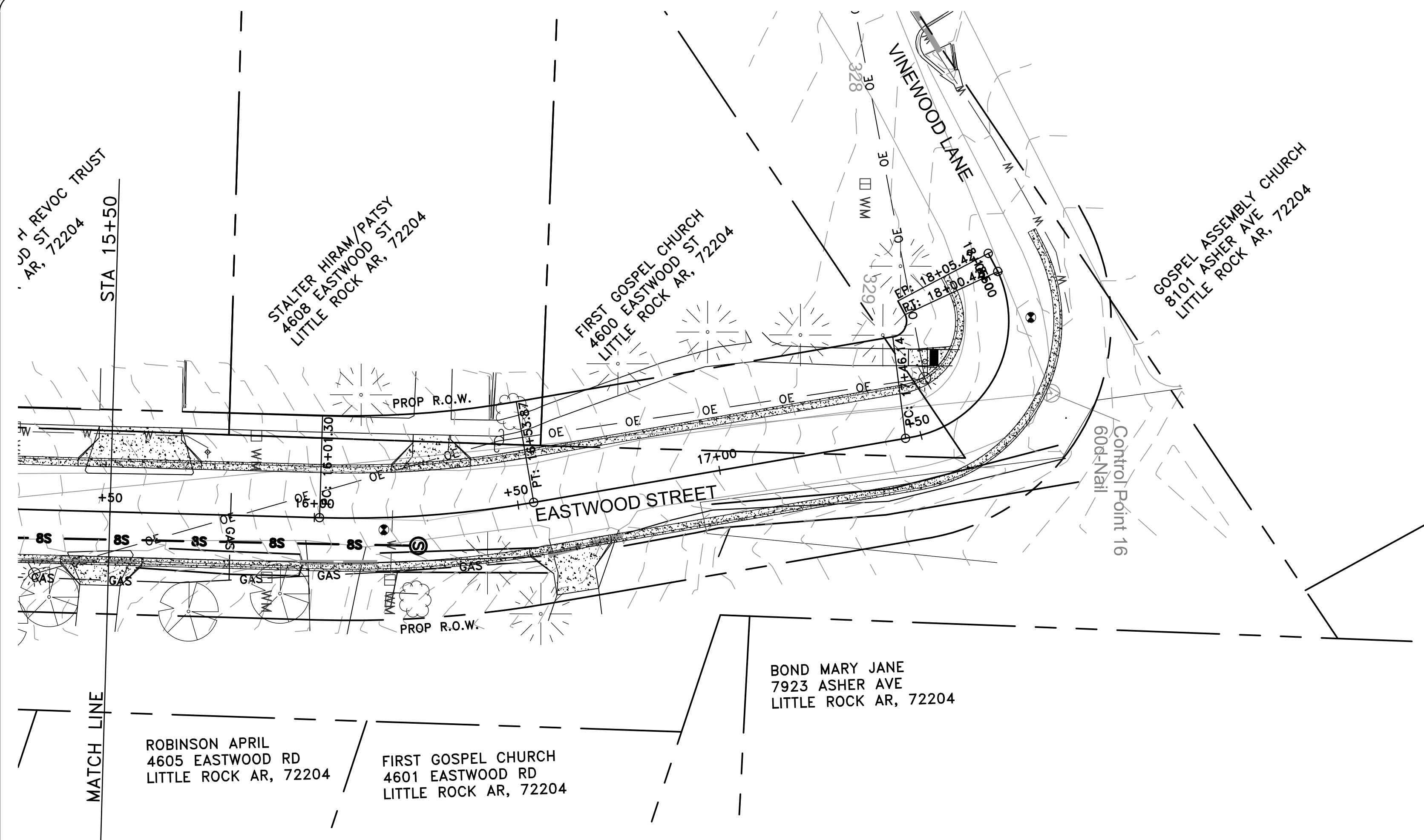
REVISIONS	DATE

**CITY OF LITTLE ROCK, ARKANSAS**  
**EASTWOOD STREET RECONSTRUCTION**  
 PLAN AND PROFILE SHEET (1)

  
 DEPARTMENT OF PUBLIC WORKS  
 CIVIL ENGINEERING  
 701 W. MARKHAM  
 LITTLE ROCK, ARKANSAS 72201



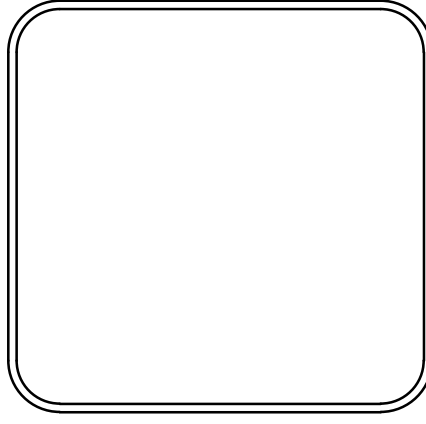
DRAWN BY <b>KWS</b>
DESIGNED <b>CV</b>
CHECKED <b>DAW</b>
DATE <b>04/03/2019</b>
SCALE <b>1" = 20'</b>
PROJECT NO. <b>07-17-ST-293</b>
SHEET NO. <b>C4</b>



REVISIONS	DATE

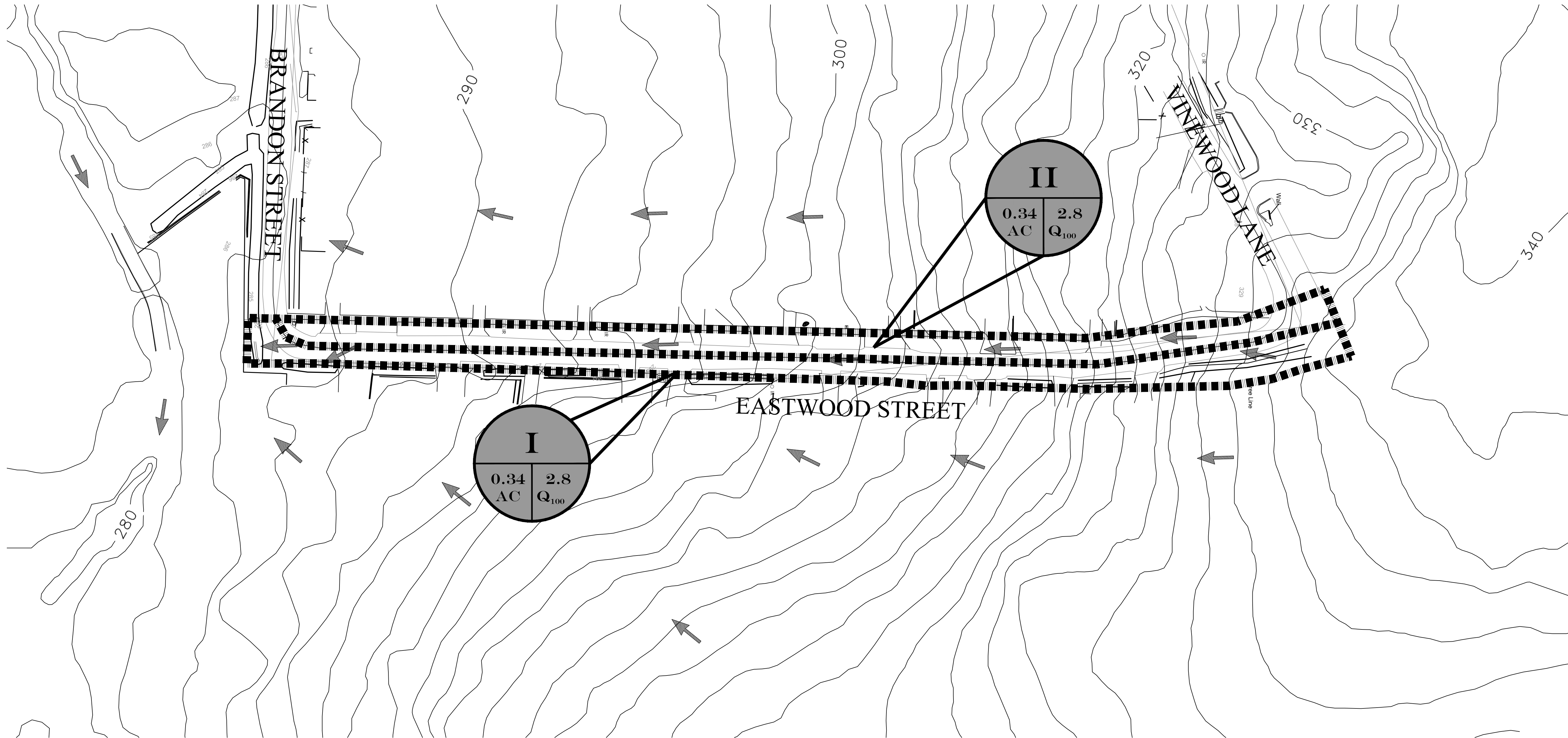
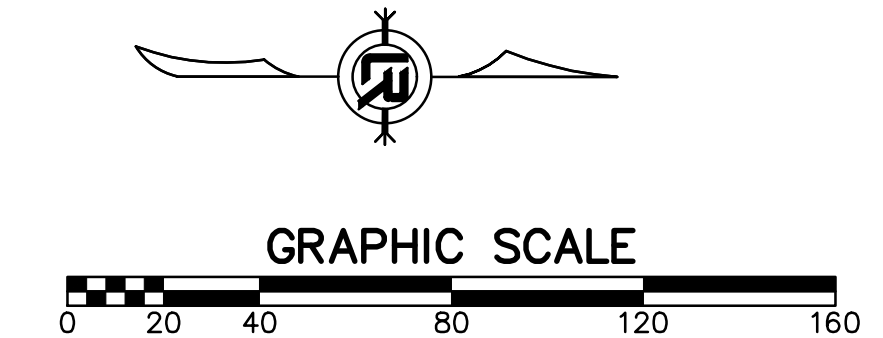
CITY OF LITTLE ROCK, ARKANSAS  
**EASTWOOD STREET RECONSTRUCTION**  
 PLAN AND PROFILE SHEET (2)

DEPARTMENT OF PUBLIC WORKS  
 CIVIL ENGINEERING  
 701 W. MARKHAM  
 LITTLE ROCK, ARKANSAS 72201



DRAWN BY  
**KWS**  
 DESIGNED  
**CV**  
 CHECKED  
**DAW**  
 DATE  
**04/03/2019**  
 SCALE  
**1" = 20'**  
 PROJECT NO.  
**07-17-ST-293**  
 SHEET NO.  
**C5**

REVISIONS	DATE



**100 YEAR HYDROLOGY COMPUTATIONS**

DRAINAGE AREA COMPUTATIONS									
DESIGN POINT ID	RUNOFF COEF. "C"	AREA "A" (ACRES)	TIME OF CONC (min)	INTENSITY I <sub>2</sub> (in/hr)	DISCHARGE Q <sub>2</sub> (cfs)	INTENSITY I <sub>25</sub> (in/hr)	DISCHARGE Q <sub>25</sub> (cfs)	INTENSITY I <sub>100</sub> (in/hr)	DISCHARGE Q <sub>100</sub> (cfs)
I	0.95	0.34	10	4.80	1.6	7.07	2.3	8.60	2.8
II	0.95	0.34	10	4.80	1.6	7.07	2.3	8.60	2.8

**DRAINAGE CRITERIA**

BASIS: CITY OF LITTLE ROCK STORMWATER MANAGEMENT AND DRAINAGE MANUAL

RATIONAL METHOD Q=CIA  
 Q= STORM DRAINAGE DISCHARGE (cfs) AT DESIGN POINT  
 C= RUNOFF COEFFICIENT  
 I= DESIGN STORM INTENSITY (IN/HR)  
 A= DRAINAGE AREA (ACRES)

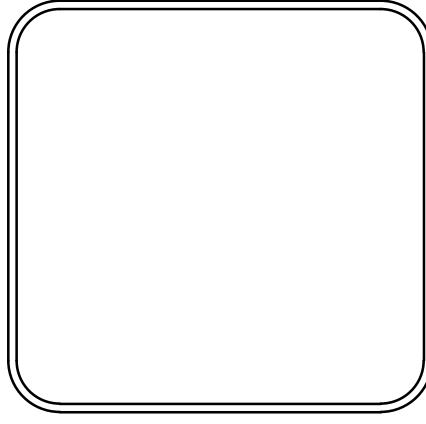
RUNOFF COEFFICIENT: 0.95 (STREETS - TABLE 2.2)  
 0.50 (UNDEVELOPED - TABLE 2.2)

STORM FREQUENCY: 100 YEARS-ONSITE DRAINAGE

MANNING'S COEFFICIENT: N=0.0175 - CONCRETE PAVEMENT  
 N=0.013 - CONCRETE PIPES

CITY OF LITTLE ROCK, ARKANSAS  
 EASTWOOD STREET RECONSTRUCTION  
 PRELIMINARY DRAINAGE AREA MAP

DEPARTMENT OF PUBLIC WORKS  
 CIVIL ENGINEERING  
 701 W. MARKHAM  
 LITTLE ROCK, ARKANSAS 72201



DRAWN BY  
 KWS  
 DESIGNED  
 CV  
 CHECKED  
 DAW  
 DATE  
 04/03/2019  
 SCALE  
 1" = 40'  
 PROJECT NO.  
 07-17-ST-293  
 SHEET NO.  
 C6