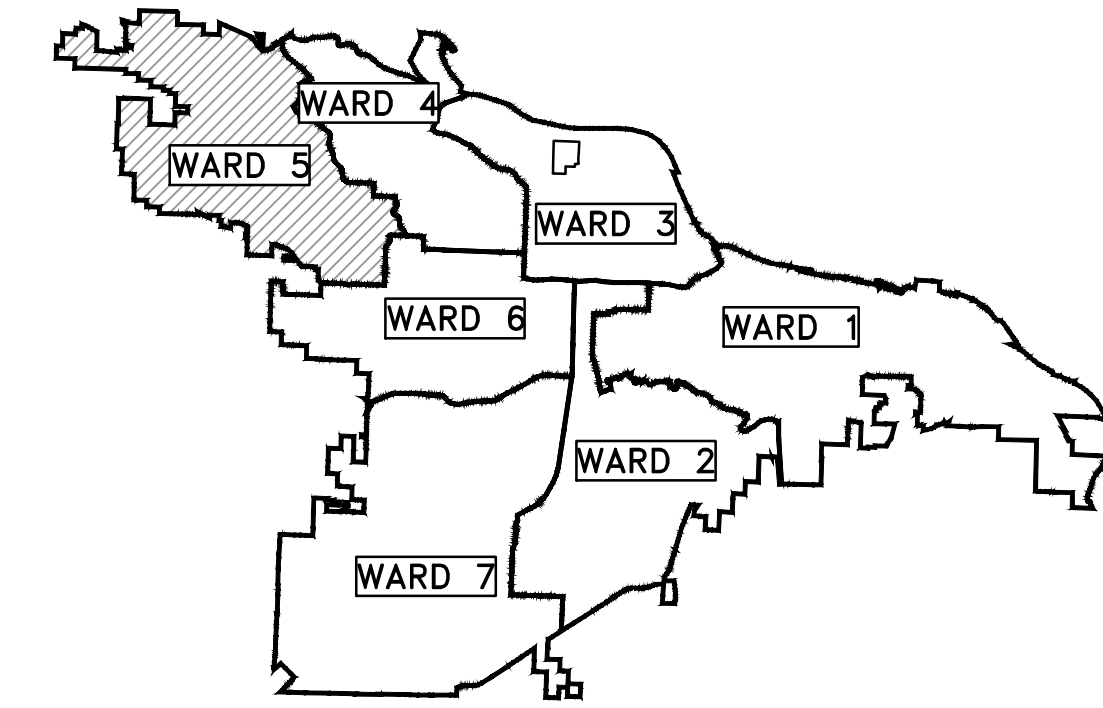


# CLR PROJECT 05-17-ST-223B

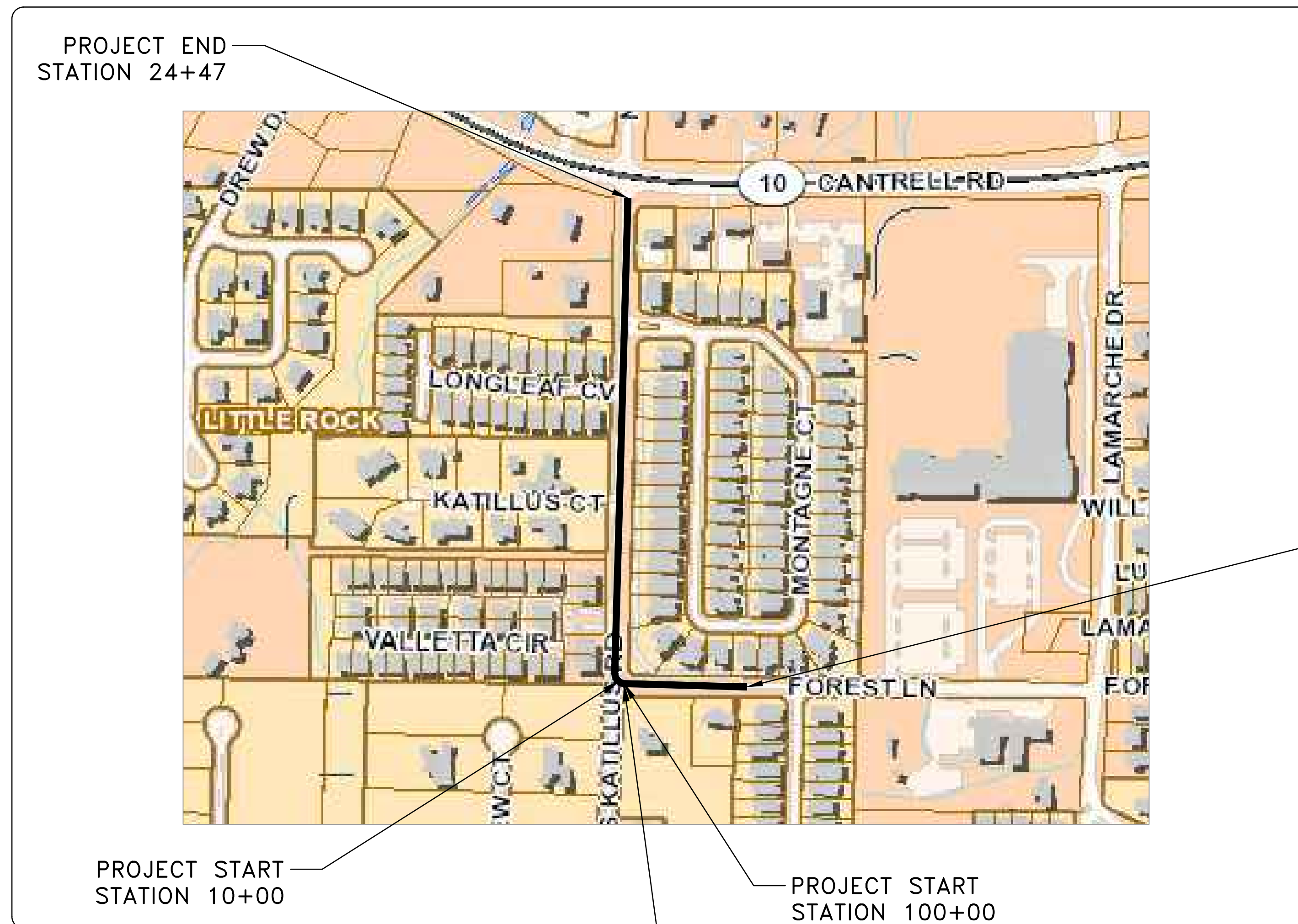
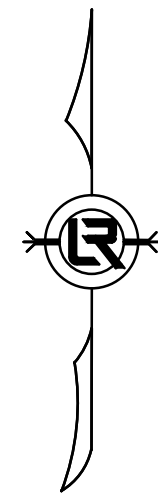
## KATILLUS - FOREST IMPROVEMENTS

### (CANTRELL ROAD TO FOREST LANE)



PROJECT LOCATION - WARD 5

SHEET NO.	TITLE
C1	COVER SHEET
C2	GENERAL NOTES, LEGEND AND QUANTITIES
C3	TYPICAL SECTION
C4	PLAN AND PROFILE SHEET (1)
C5	PLAN AND PROFILE SHEET (2)
C6	PLAN AND PROFILE SHEET (3)
C7	PLAN AND PROFILE SHEET (4)
C8	PRELIMINARY DRAINAGE AREA MAP



PROJECT END STATION 103+43

PROJECT LOCATION



**2019-2021**  
**BOND PROGRAM**

DEPARTMENT OF PUBLIC WORKS  
CIVIL ENGINEERING  
701 WEST MARKHAM STREET  
LITTLE ROCK, ARKANSAS 72201



**Know what's below.  
Call before you dig.**

15% PRELIMINARY DESIGN

FOR REVIEW ONLY

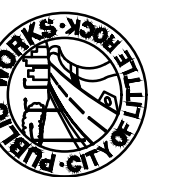
These documents are for Design Review and not intended for Construction, Bidding or Permit Purposes. They were prepared by, or under the supervision of:

DEREK A. WHITE P.E.# 98498      04/03/2019  
Date

REVISIONS	DATE

CITY OF LITTLE ROCK, ARKANSAS  
KATILLUS ROAD - FOREST LANE IMPROVEMENTS

COVER SHEET



DEPARTMENT OF PUBLIC WORKS  
CIVIL ENGINEERING  
701 W. MARKHAM  
LITTLE ROCK, ARKANSAS 72201



DRAWN BY KWS
DESIGNED CV
CHECKED DAW
DATE 04/03/2019
SCALE N.T.S
PROJECT NO. 07-17-ST-293
SHEET NO. C1

CLR PROJECT 05-17-ST-223B			
KATILLUS - FOREST IMPROVEMENTS			
		3-Apr-19	
ITEM #	ITEM DESCRIPTION	UNIT	QUANTITY
2.01	SITE PREPARATION	LS	1
3.01	UNCLASSIFIED EXCAVATION	CY	344
4.01	AGGREGATE BASE COURSE (CLASS 7)	TON	54
5.01	TACK COAT	GAL	15
6.01	ASPHALT SURFACE COURSE	TON	25
7.04	CONCRETE DRIVE 6"	SF	2273
8.01	CONCRETE CURB & GUTTER (CLASS 3)	LF	1132
10.02	CURB INLET	EA	3
13.18	STORM DRAIN PIPE, 18" RCP	LF	874
14.01	SOLID SODDING (BERMUDA)	SY	252
16.01	MAINTENANCE OF TRAFFIC	LS	1
17.01	CUT AND REPAIR EXISTING STREET SURFACE	SY	18
19.01	FINAL CLEAN-UP	LS	1
22.01	MAILBOX RELOCATION	EA	7
49.00	TOP SOIL	CY	56
52.00	PROJECT INFORMATION KIOSK	LS	1

EXISTING PROPOSED

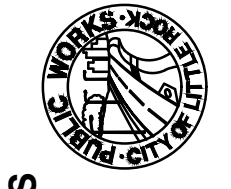
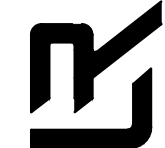
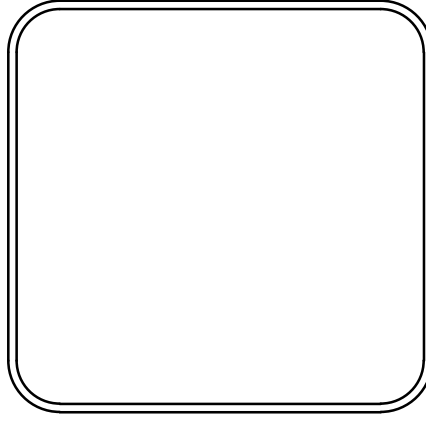
- IRON ROD ○ IR
- PK NAIL ○ PK
- R.R. SPIKE ○ RR(Sp)
- CONC. MONUMENT □ CM
- WATER VALVE X WV
- WATER METER □ WM
- FIRE HYDRANT ∇ FH
- GAS METER □ GM
- GAS VALVE ⊙ GV
- CLEAN-OUT ○ CO
- GUARD POST (BOLLARD) ● GP
- SIGN POST
- BENCHMARK
- STORM SEWER MANHOLE (D)
- SANITARY SEWER MANHOLE (S)
- TELEPHONE MANHOLE (T)
- ELECTRIC MANHOLE (E)
- TELEPHONE BOX □
- ELECTRIC BOX □
- CABLE BOX □
- UTILITY POLE
- GUY WIRE
- LIGHT POLE
- POST OR POLE (TYPE AS NOTED)
- MAILBOX
- DECIDUOUS TREE
- EVERGREEN/CONIFEROUS TREE
- BUSH
- PROPERTY LINE
- SETBACK LINE
- EASEMENT LINE
- CURB
- FENCE
- OVERHEAD ELECTRIC
- OVERHEAD TELEPHONE
- OVERHEAD CABLE
- UNDERGROUND TELEPHONE
- UNDERGROUND ELECTRIC
- UNDERGROUND CABLE
- WATER LINE
- SEWER LINE
- GAS LINE
- STORM SEWER/CULVERT
- EDGE OF WOODS
- CONTOUR LINE

- PROPOSED CONTOUR
- PROPOSED SPOT ELEVATION
- PROPOSED SPOT CURB ELEVATION
- STORM SEWER - PIPE
- STORM SEWER - MITERED END SECTION
- STORM SEWER - GRATE INLET
- STORM SEWER - JUNCTION BOX
- STORM SEWER - FLARED END SECTION
- STORM SEWER - HEADWALL
- STORM SEWER - SINGLE WING
- STORM SEWER - DOUBLE WING
- STORM SEWER - AREA INLET
- GRADE BREAK LINE
- HIGH POINT
- LOW POINT
- CUT LINE
- FILL LINE
- SANITARY SEWER PIPE
- SANITARY SEWER MANHOLE
- PROPOSED CURB
- PROPOSED CONCRETE
- CONSTRUCTION - ENTRANCE/EXIT
- CHECK DAM
- DIVERSION BERM
- DOWNDRAIN STRUCTURE - TEMPORARY
- ROCK DAM
- SEDIMENT BARRIER - SILT FENCE
- SEDIMENT BARRIER - GRAVEL RING
- SEDIMENT BARRIER - BLOCK & GRAVEL
- SEDIMENT BARRIER - BLOCK
- TEMPORARY SEDIMENT BASIN
- SILT FENCE - TYPE A
- SILT FENCE - TYPE B
- SILT FENCE - TYPE C
- STORM DRAIN OUTLET PROTECTION
- SURFACE ROUGHENING
- DISTURBED AREA STABILIZATION -TEMPORARY STABILIZATION
- DISTURBED AREA STABILIZATION -TEMPORARY GRASSING
- DISTURBED AREA STABILIZATION -PERMANENT GRASSING
- MATting/BLANKETS

REVISIONS	DATE

CITY OF LITTLE ROCK, ARKANSAS  
**KATILLUS ROAD - FOREST LANE IMPROVEMENTS**  
 GENERAL NOTES, LEGEND AND QUANTITIES

DEPARTMENT OF PUBLIC WORKS  
 CIVIL ENGINEERING  
 701 W. MARKHAM  
 LITTLE ROCK, ARKANSAS 72201

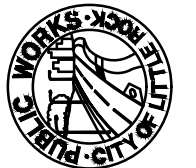

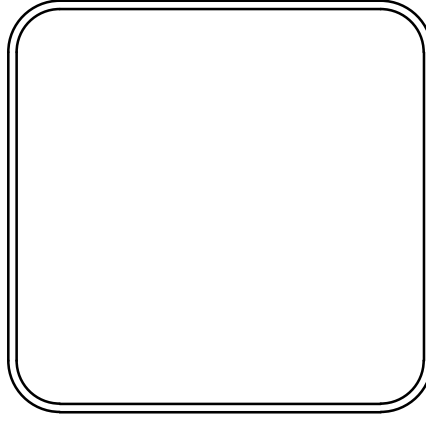




DRAWN BY KWS
DESIGNED CV
CHECKED DAW
DATE 04/03/2019
SCALE N.T.S
PROJECT NO. 07-17-ST-293
SHEET NO. C2

REVISIONS	DATE

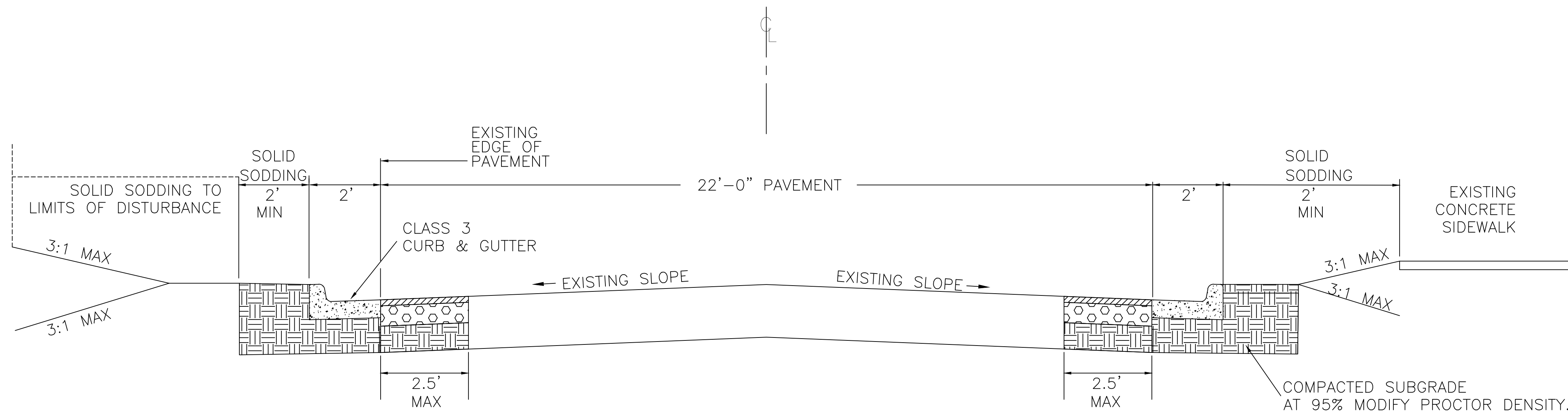
CITY OF LITTLE ROCK, ARKANSAS  
**KATILLUS ROAD - FOREST LANE IMPROVEMENTS**  
 TYPICAL SECTION

DEPARTMENT OF PUBLIC WORKS  
 CIVIL ENGINEERING  
 701 W. MARKHAM  
 LITTLE ROCK, ARKANSAS 72201

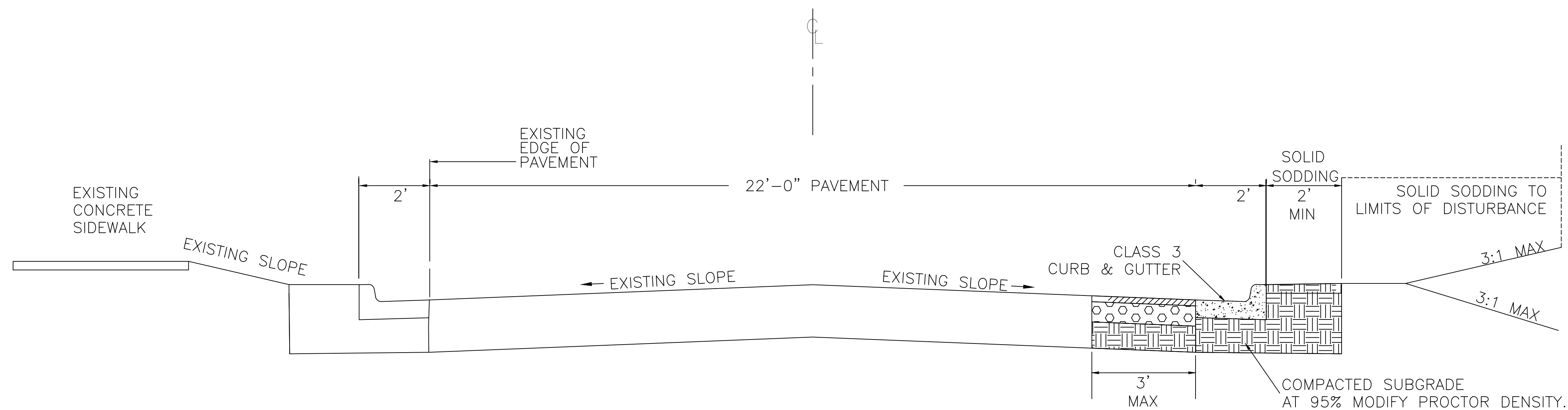




DRAWN BY  
**KWS**  
 DESIGNED  
**CV**  
 CHECKED  
**DAW**  
 DATE  
**04/03/2019**  
 SCALE

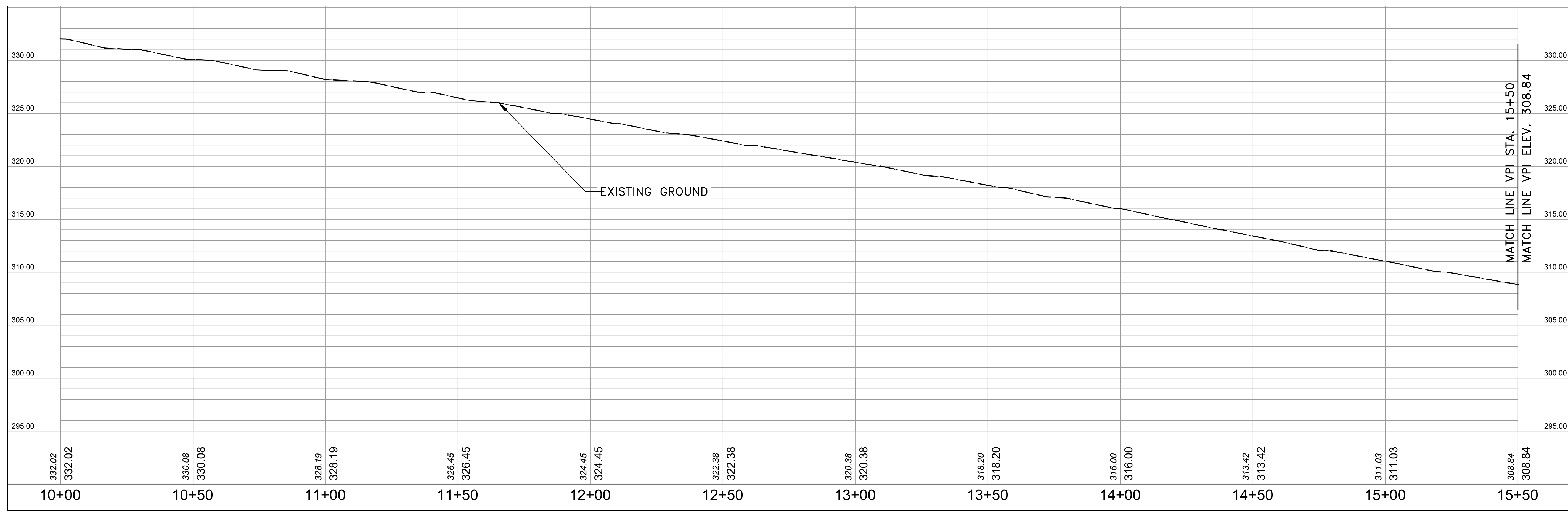
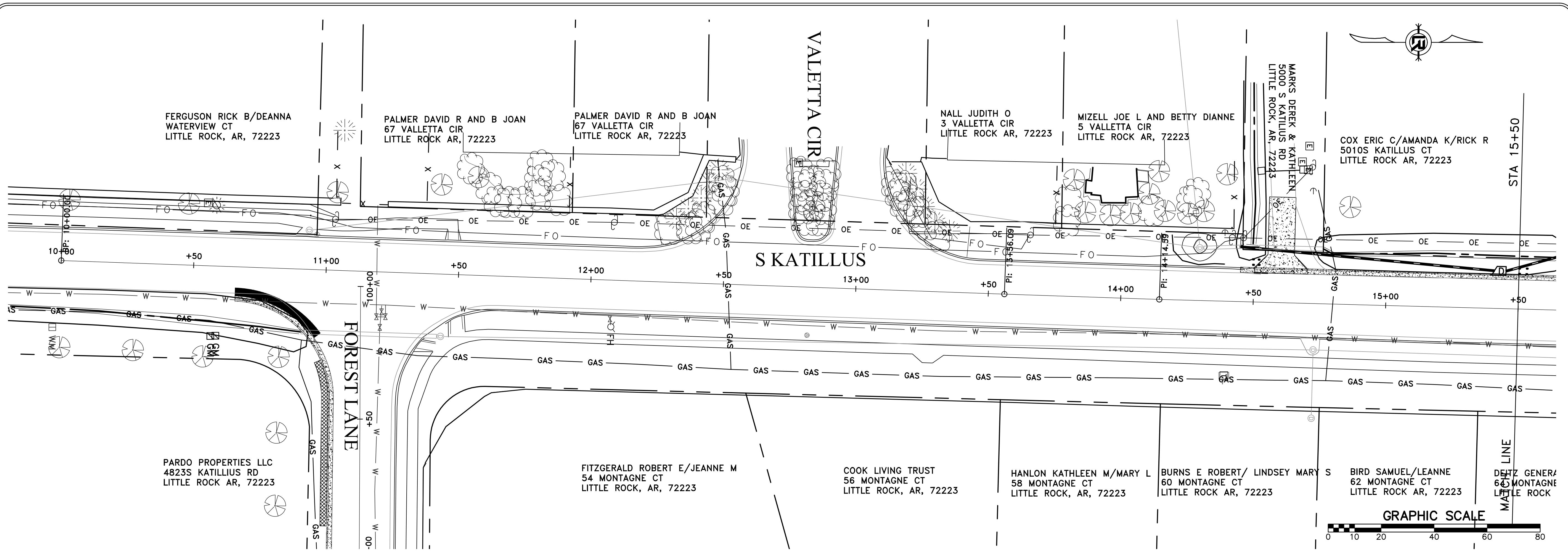
PROJECT NO.  
**07-17-ST-293**  
 SHEET NO.  
**C3**



KATILLUS RD TYPICAL SECTION



FOREST LN TYPICAL SECTION



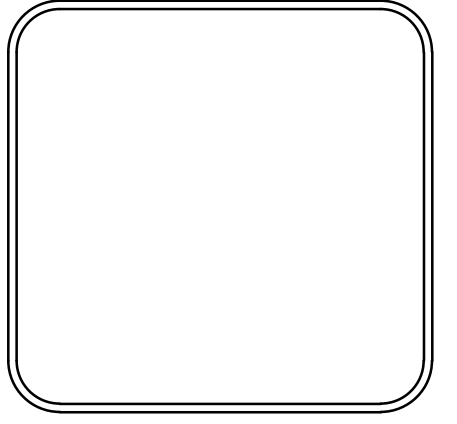
REVISIONS	DATE

CITY OF LITTLE ROCK, ARKANSAS

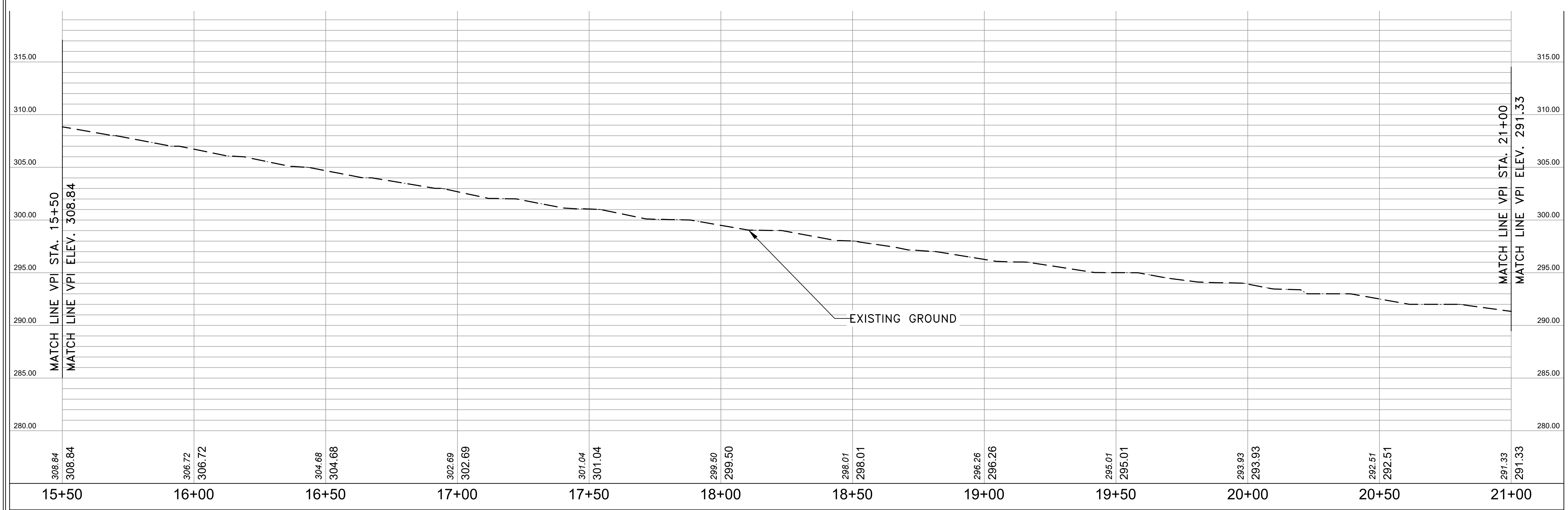
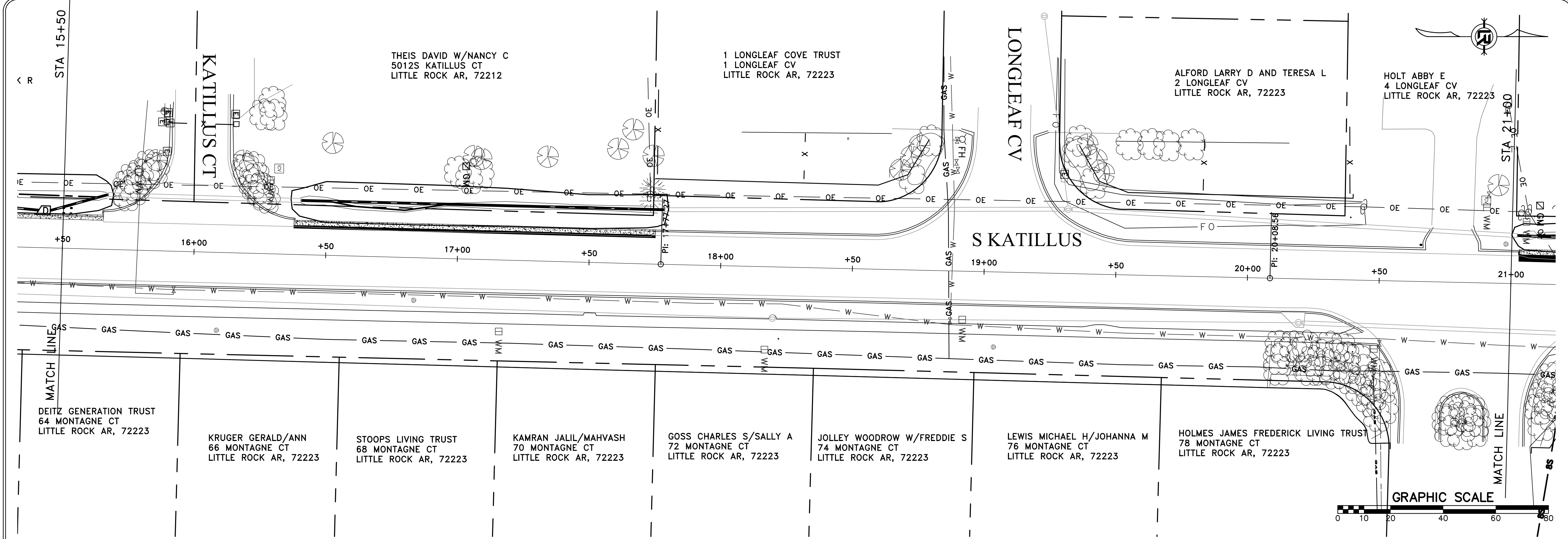
KATILLUS ROAD - FOREST LANE IMPROVEMENTS

PLAN AND PROFILE SHEET (1)

DEPARTMENT OF PUBLIC WORKS  
CIVIL ENGINEERING  
701 W. MARKHAM  
LITTLE ROCK, ARKANSAS 72201

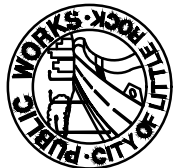


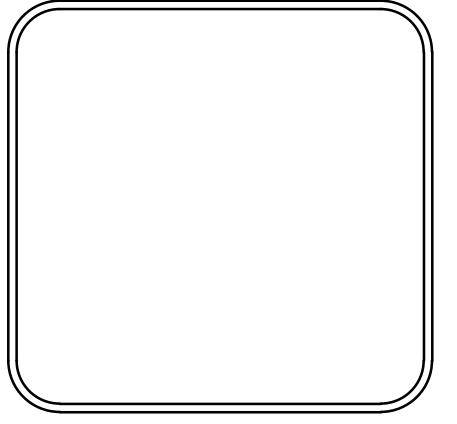
DRAWN BY  
KWS  
DESIGNED  
CV  
CHECKED  
DAW  
DATE  
04/03/2019  
SCALE  
1" = 20'  
PROJECT NO.  
07-17-ST-293  
SHEET NO.  
C4



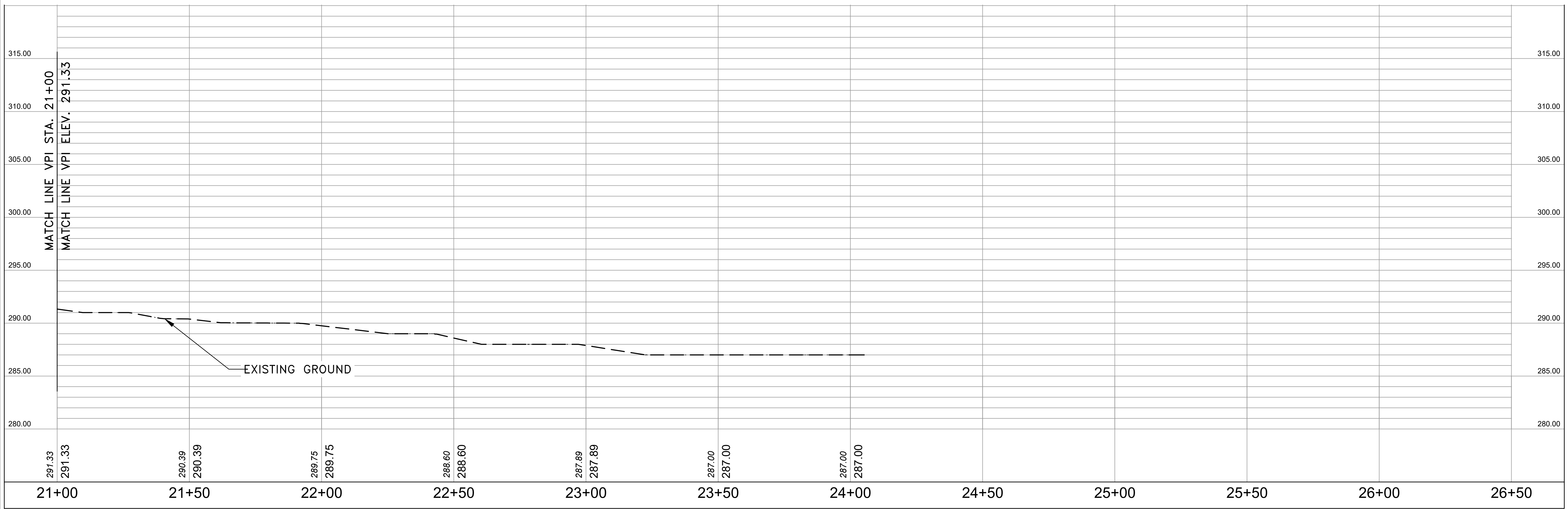
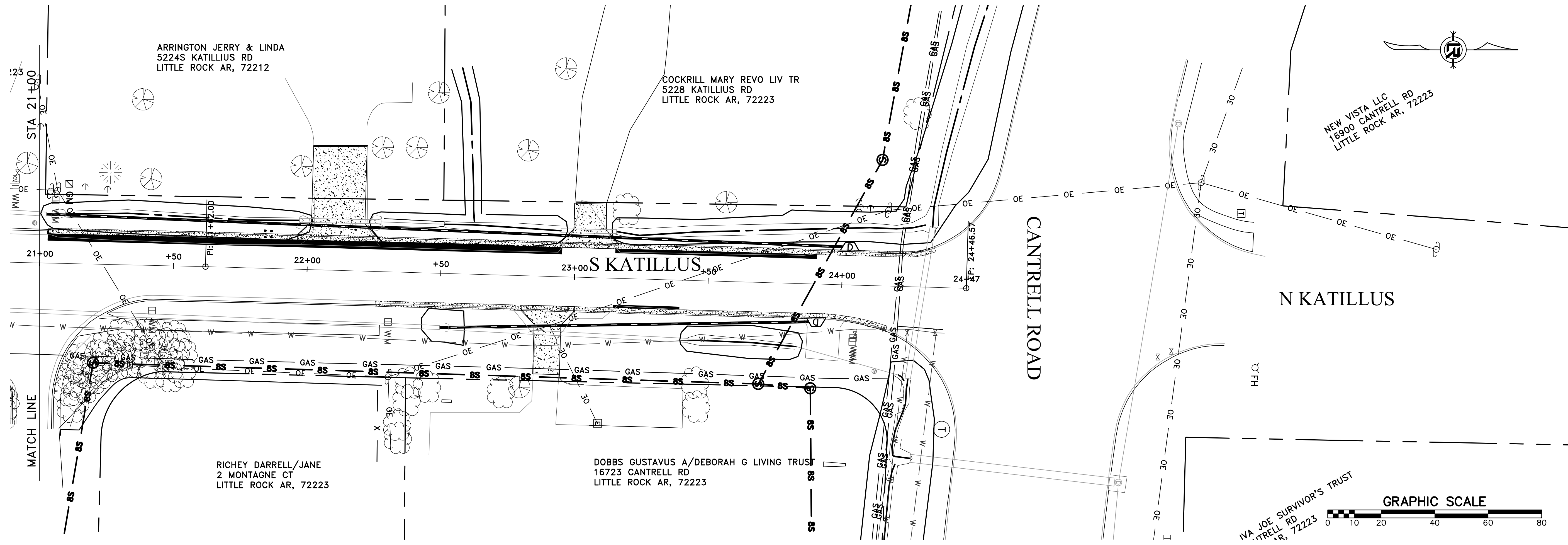
REVISIONS	DATE

**CITY OF LITTLE ROCK, ARKANSAS**  
**KATILLUS ROAD - FOREST LANE IMPROVEMENTS**  
 PLAN AND PROFILE SHEET (2)

  
 DEPARTMENT OF PUBLIC WORKS  
 CIVIL ENGINEERING  
 701 W. MARKHAM  
 LITTLE ROCK, ARKANSAS 72201



<b>DRAWN BY</b> KWS
<b>DESIGNED</b> CV
<b>CHECKED</b> DAW
<b>DATE</b> 04/03/2019
<b>SCALE</b> 1" = 20'
<b>PROJECT NO.</b> 07-17-ST-293
<b>SHEET NO.</b> C5



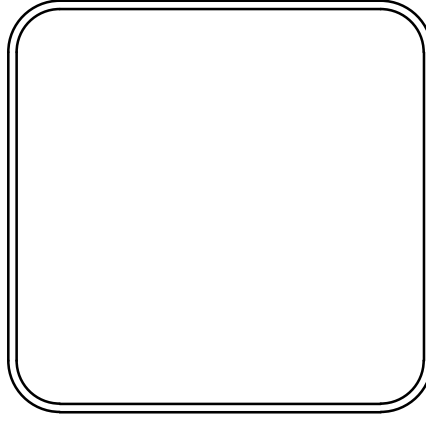
REVISIONS	DATE

CITY OF LITTLE ROCK, ARKANSAS

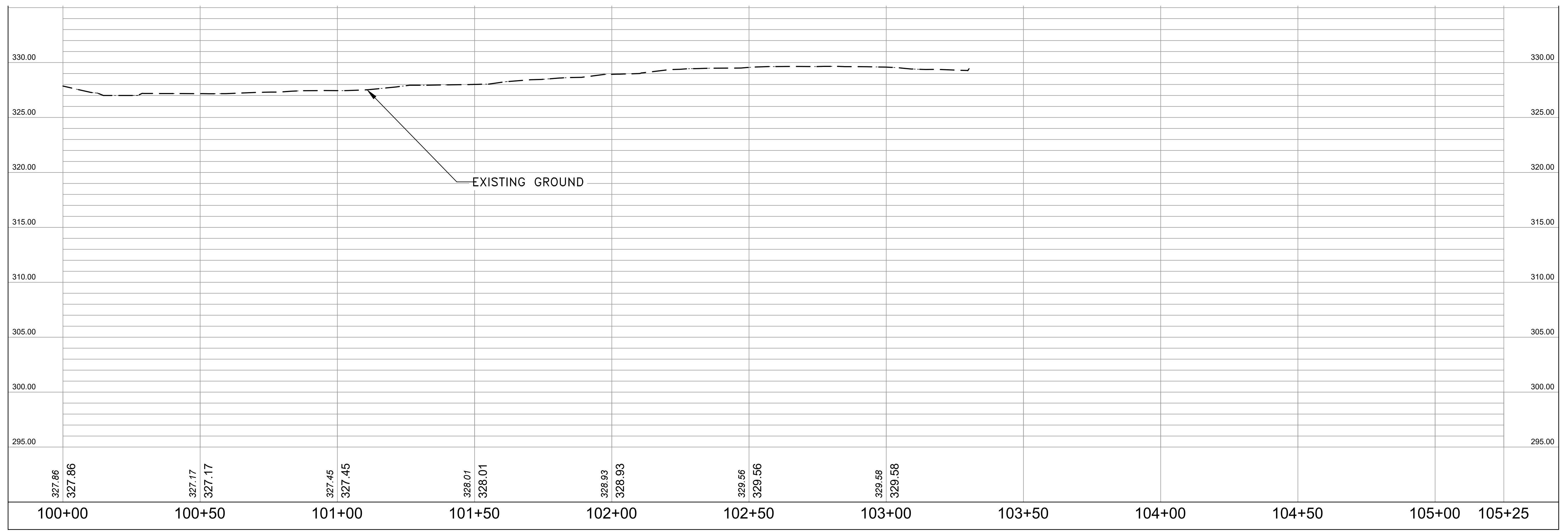
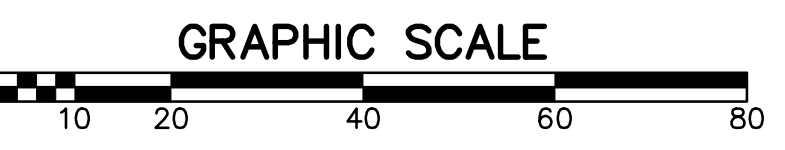
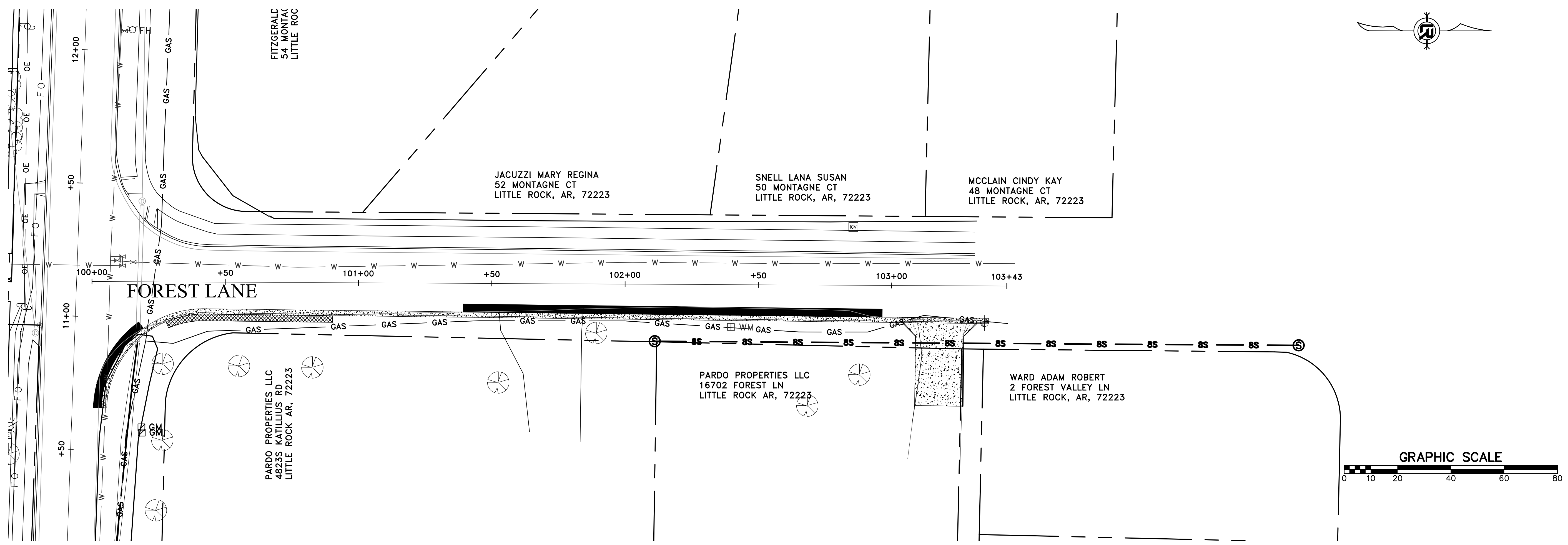
KATILLUS ROAD - FOREST LANE IMPROVEMENTS

PLAN AND PROFILE SHEET (3)

DEPARTMENT OF PUBLIC WORKS  
CIVIL ENGINEERING  
701 W. MARKHAM  
LITTLE ROCK, ARKANSAS 72201



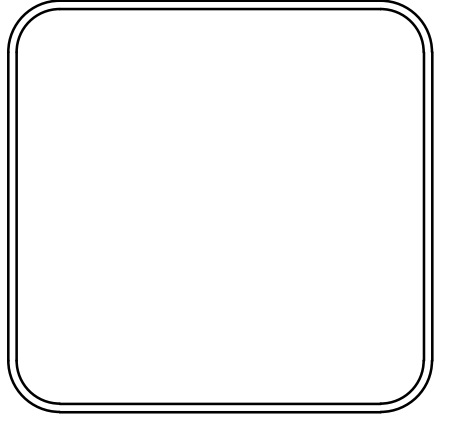
DRAWN BY KWS
DESIGNED CV
CHECKED DAW
DATE 04/03/2019
SCALE 1" = 20'
PROJECT NO. 07-17-ST-293
SHEET NO. C6



REVISIONS	DATE

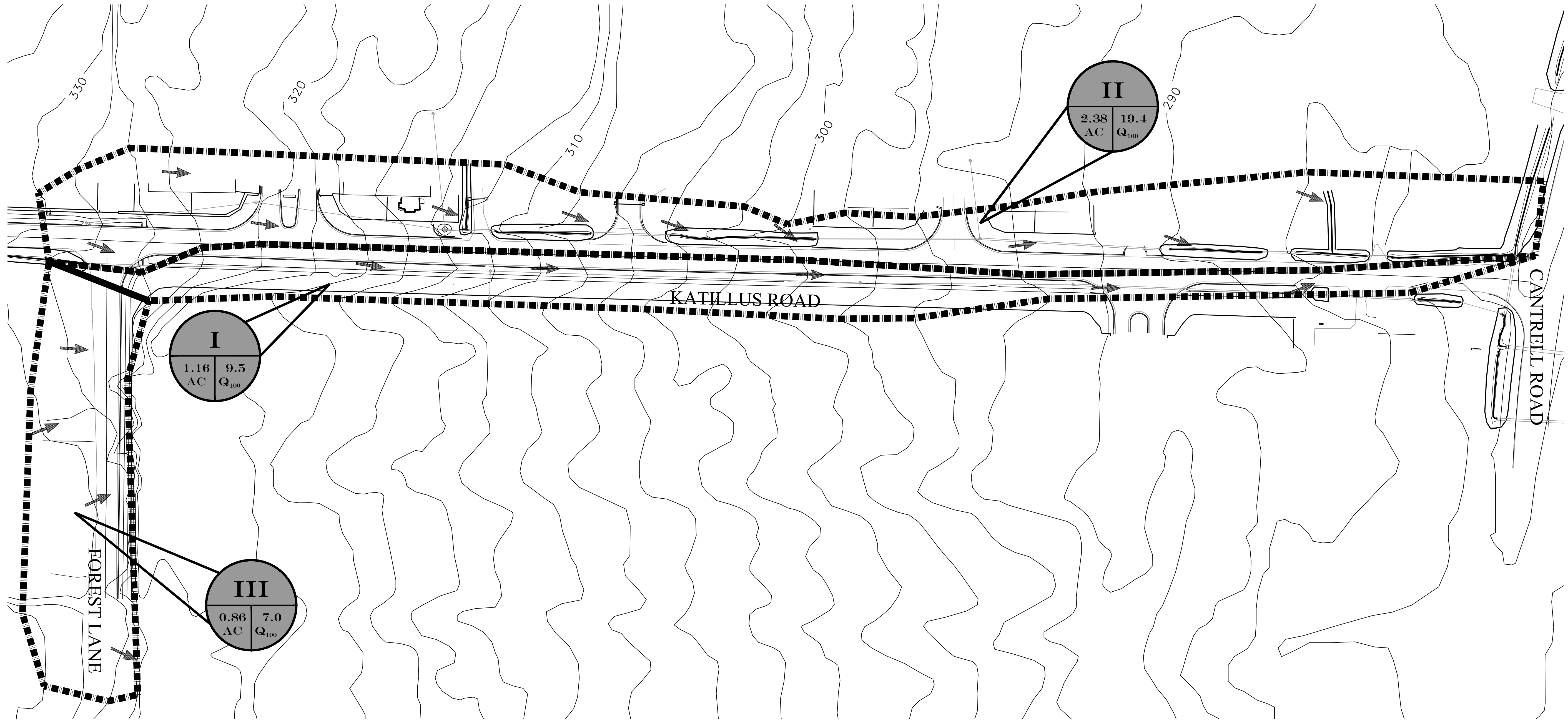
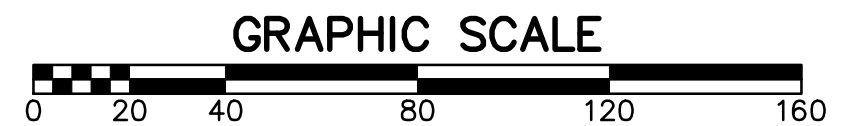
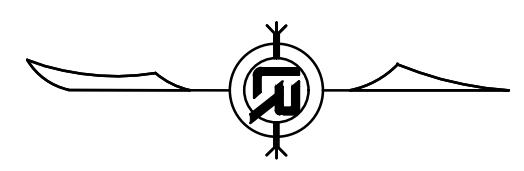
**CITY OF LITTLE ROCK, ARKANSAS**  
**KATILLUS ROAD - FOREST LANE IMPROVEMENTS**  
 PLAN AND PROFILE SHEET (4)

DEPARTMENT OF PUBLIC WORKS  
 CIVIL ENGINEERING  
 701 W. MARKHAM  
 LITTLE ROCK, ARKANSAS 72201



**DRAWN BY**  
KWS  
**DESIGNED**  
CV  
**CHECKED**  
DAW  
**DATE**  
04/03/2019  
**SCALE**  
1" = 20'  
**PROJECT NO.**  
07-17-ST-293  
**SHEET NO.**  
C7

REVISIONS	DATE



CITY OF LITTLE ROCK, ARKANSAS  
**KATILLUS ROAD - FOREST LANE IMPROVEMENTS**  
 PRELIMINARY DRAINAGE AREA MAP

DEPARTMENT OF PUBLIC WORKS  
 CIVIL ENGINEERING  
 701 W. MARKHAM  
 LITTLE ROCK, ARKANSAS 72201

**100 YEAR HYDROLOGY COMPUTATIONS**

DRAINAGE AREA COMPUTATIONS									
DESIGN POINT ID	RUNOFF COEF. "C"	AREA "A" (ACRES)	TIME OF CONC (min)	INTENSITY I <sub>2</sub> (in/hr)	DISCHARGE Q <sub>2</sub> (cfs)	INTENSITY I <sub>25</sub> (in/hr)	DISCHARGE Q <sub>25</sub> (cfs)	INTENSITY I <sub>100</sub> (in/hr)	DISCHARGE Q <sub>100</sub> (cfs)
I	0.95	1.16	10	4.80	5.3	7.07	7.8	8.60	9.5
II	0.95	2.38	10	4.80	10.9	7.07	16.0	8.60	19.4
III	0.95	0.86	10	4.80	3.9	7.07	5.8	8.60	7.0

**DRAINAGE CRITERIA**

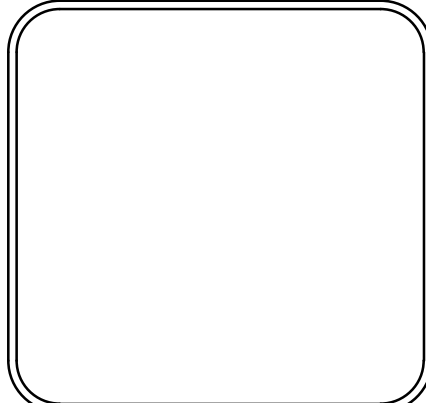
BASIS: CITY OF LITTLE ROCK STORMWATER MANAGEMENT AND DRAINAGE MANUAL

RATIONAL METHOD Q=CIA  
 Q= STORM DRAINAGE DISCHARGE (cfs) AT DESIGN POINT  
 C= RUNOFF COEFFICIENT  
 I= DESIGN STORM INTENSITY (IN/HR)  
 A= DRAINAGE AREA (ACRES)

RUNOFF COEFFICIENT: 0.95 (STREETS - TABLE 2.2)  
 0.50 (UNDEVELOPED - TABLE 2.2)

STORM FREQUENCY: 100 YEARS-ONSITE DRAINAGE

MANNING'S COEFFICIENT: N=0.0175 - CONCRETE PAVEMENT  
 N=0.013 - CONCRETE PIPES



DRAWN BY  
 KWS  
 DESIGNED  
 CV  
 CHECKED  
 DAW  
 DATE  
 04/03/2019  
 SCALE  
 1" = 50'  
 PROJECT NO.  
 07-17-ST-293  
 SHEET NO.  
 C8