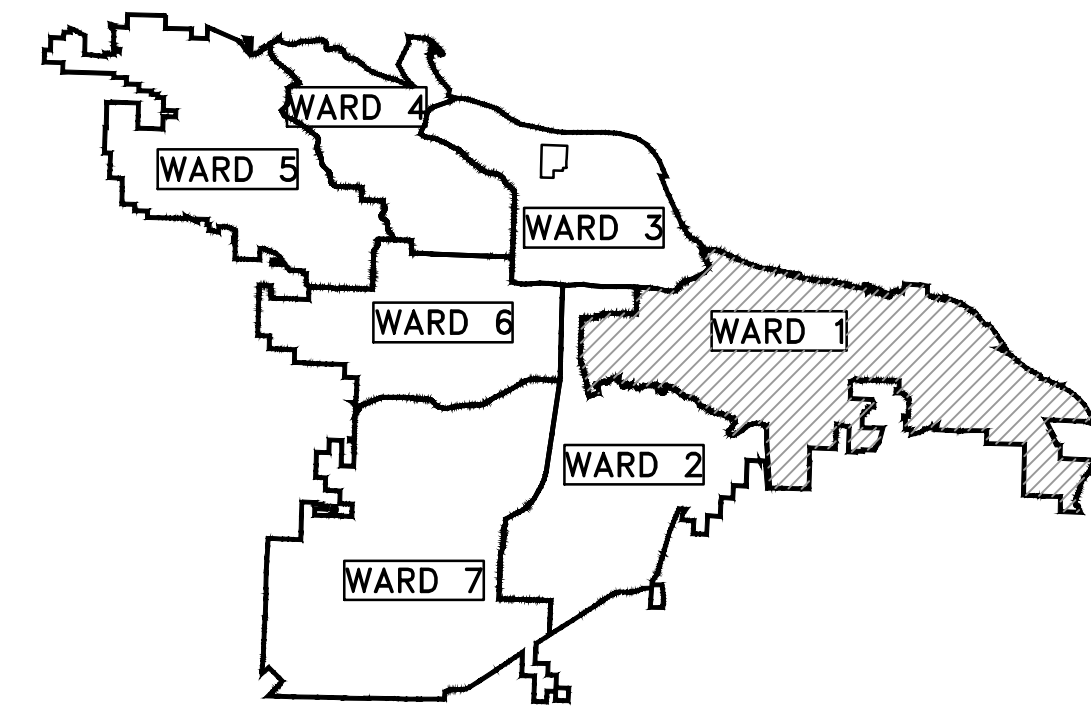
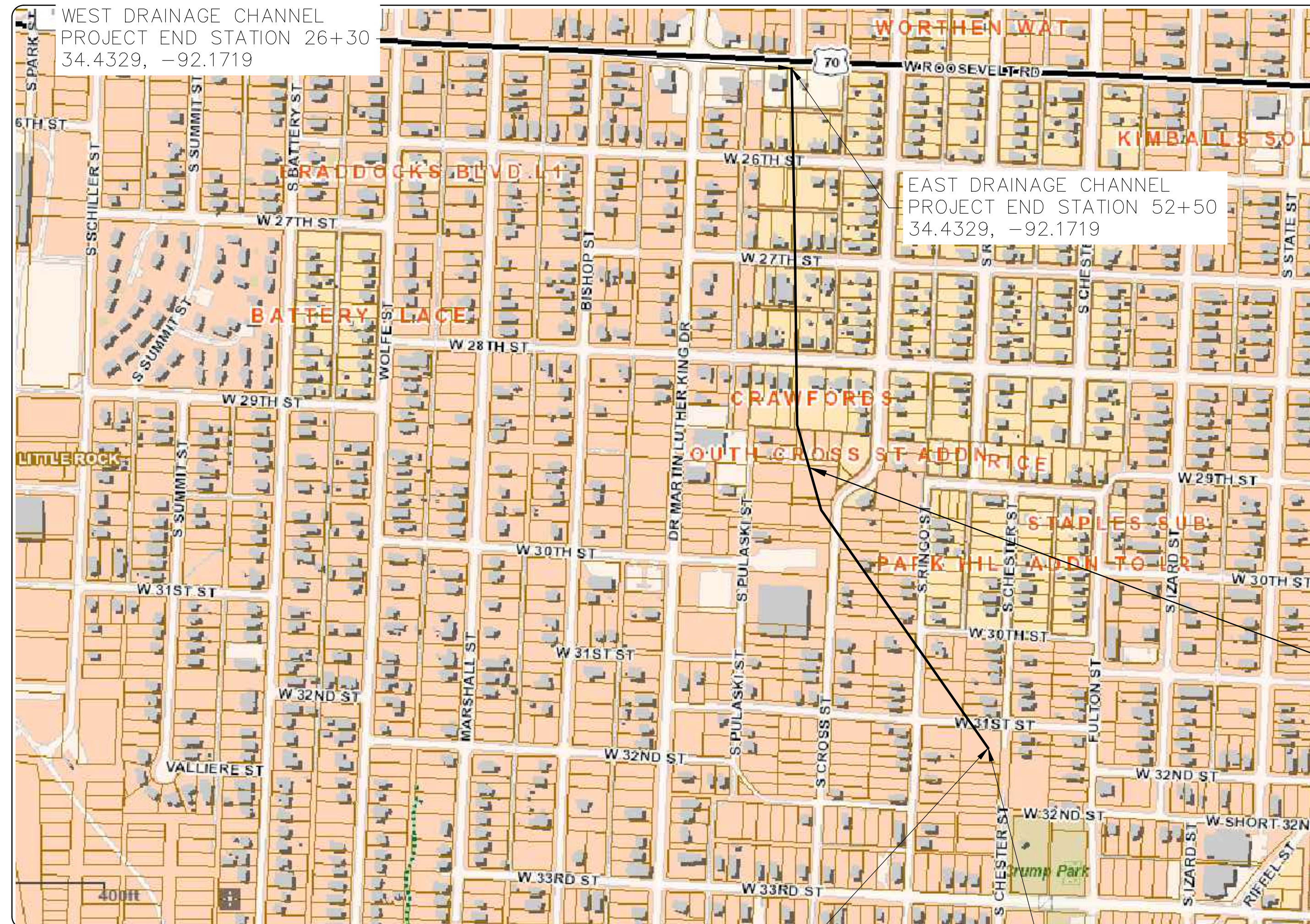


CLR PROJECT #01-17-DR-9 SWAGGERTY DRAINAGE IMPROVEMENTS ROOSEVELT ROAD TO SOUTH OF 31ST STREET



PROJECT LOCATION - WARD 1



SHEET NO.	TITLE
C1	COVER SHEET
C2	GENERAL NOTES AND QUANTITIES
C3	TYPICAL SECTIONS
C4	PLAN AND PROFILE SHEET (1)
C5	PLAN AND PROFILE SHEET (2)
C6	PLAN AND PROFILE SHEET (3)
C7	PLAN AND PROFILE SHEET (4)
C8	PLAN AND PROFILE SHEET (5)
C9	PLAN AND PROFILE SHEET (6)
C10	PLAN AND PROFILE SHEET (7)
C11	PLAN AND PROFILE SHEET (8)
C12	PLAN AND PROFILE SHEET (9)
C13	PLAN AND PROFILE SHEET (10)
C14	PLAN AND PROFILE SHEET (11)
C15	PLAN AND PROFILE SHEET (12)

15% SUBMITTAL

PROJECT LOCATION



**Know what's below.
Call before you dig.**



**2019-2021
BOND PROGRAM**

WEST DRAINAGE CHANNEL
PROJECT START
STATION 0+00
34.4351, -92.1711

EAST DRAINAGE CHANNEL
PROJECT START
STATION 26+30
34.4351, -92.1711

DEPARTMENT OF PUBLIC WORKS
CIVIL ENGINEERING
701 WEST MARKHAM STREET
LITTLE ROCK, ARKANSAS 72201



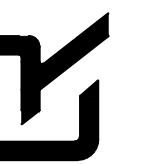
3512 S. SHACKLEFORD RD.
LITTLE ROCK, AR 72205

REVISIONS	DATE

CITY OF LITTLE ROCK, ARKANSAS
BRECKENRIDGE DRIVE DRAINAGE IMPROVEMENTS

COVER SHEET

DEPARTMENT OF PUBLIC WORKS
CIVIL ENGINEERING
701 W. MARKHAM
LITTLE ROCK, ARKANSAS 72201

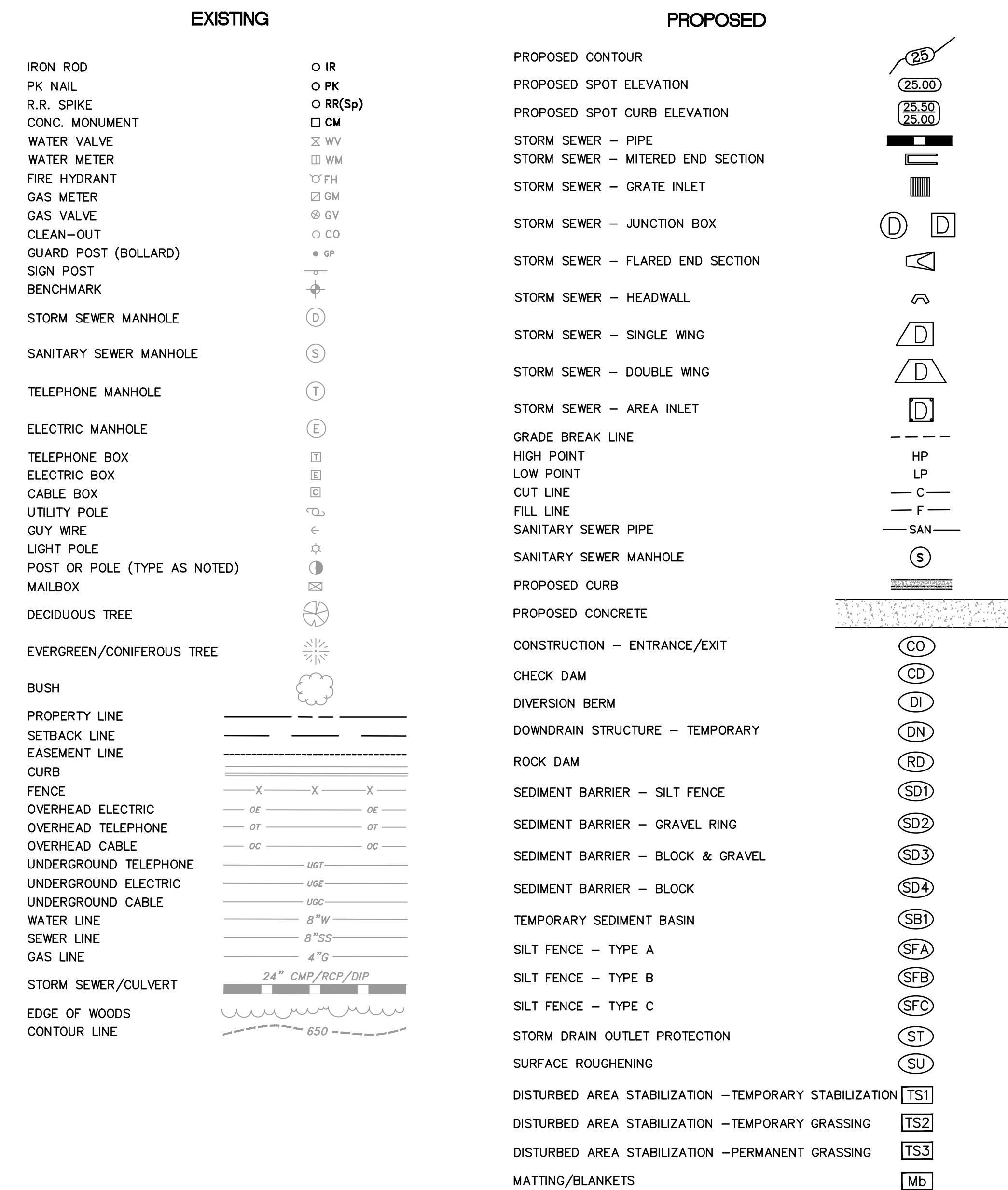


SEAL

DRAWN BY
JTM
DESIGNED
JTM
CHECKED
BJW
DATE
1-18-19
SCALE
N.T.S.
PROJECT NO.
CLR #01-17-DR-9
SHEET NO.

C1

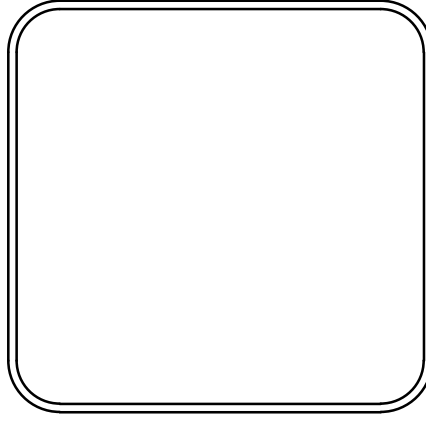
CLR #01-17-DR-9			
SWAGGERTY DRAINAGE IMPROVEMENTS			
	18-Jan-19		
ITEM #	ITEM DESCRIPTION	UNIT	QUANTITY
2.01	Site Preparation (Incl. Mobilization)	LS	1
3.01	Unclassified Excavation	CY	7000
4.01	Aggregate Base Course (Class 7)	TON	123
6.01	Asphalt Surface Course	TON	25
8.01	Concrete Curb and Gutter	LF	180
9.01	Sidewalk, 4"	SF	100
10.02	Curb Inlet	EA	3
14.01	Solid Sodding (Bermuda)	SY	1750
16.01	Maintenance of Traffic	LS	1
19.01	Final Clean-Up	LS	1
26.01	Trench or Excavation Safety Systems	LS	1
45.00	Precast Reinforced Concrete Box Culvert	LF	630
SP	Flush and Clean Existing Culvert	LF	2630
SP	Grout Existing Culvert Invert	CY	243



REVISIONS	DATE

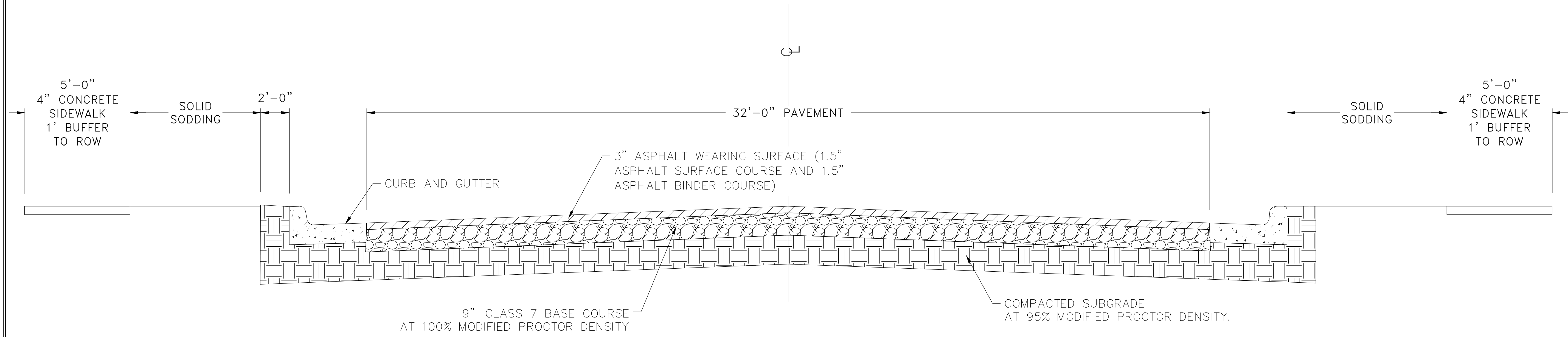
CITY OF LITTLE ROCK, ARKANSAS
SWAGGERTY DRAINAGE IMPROVEMENTS
GENERAL NOTES AND QUANTITIES

DEPARTMENT OF PUBLIC WORKS
CIVIL ENGINEERING
701 W. MARKHAM
LITTLE ROCK, ARKANSAS 72201

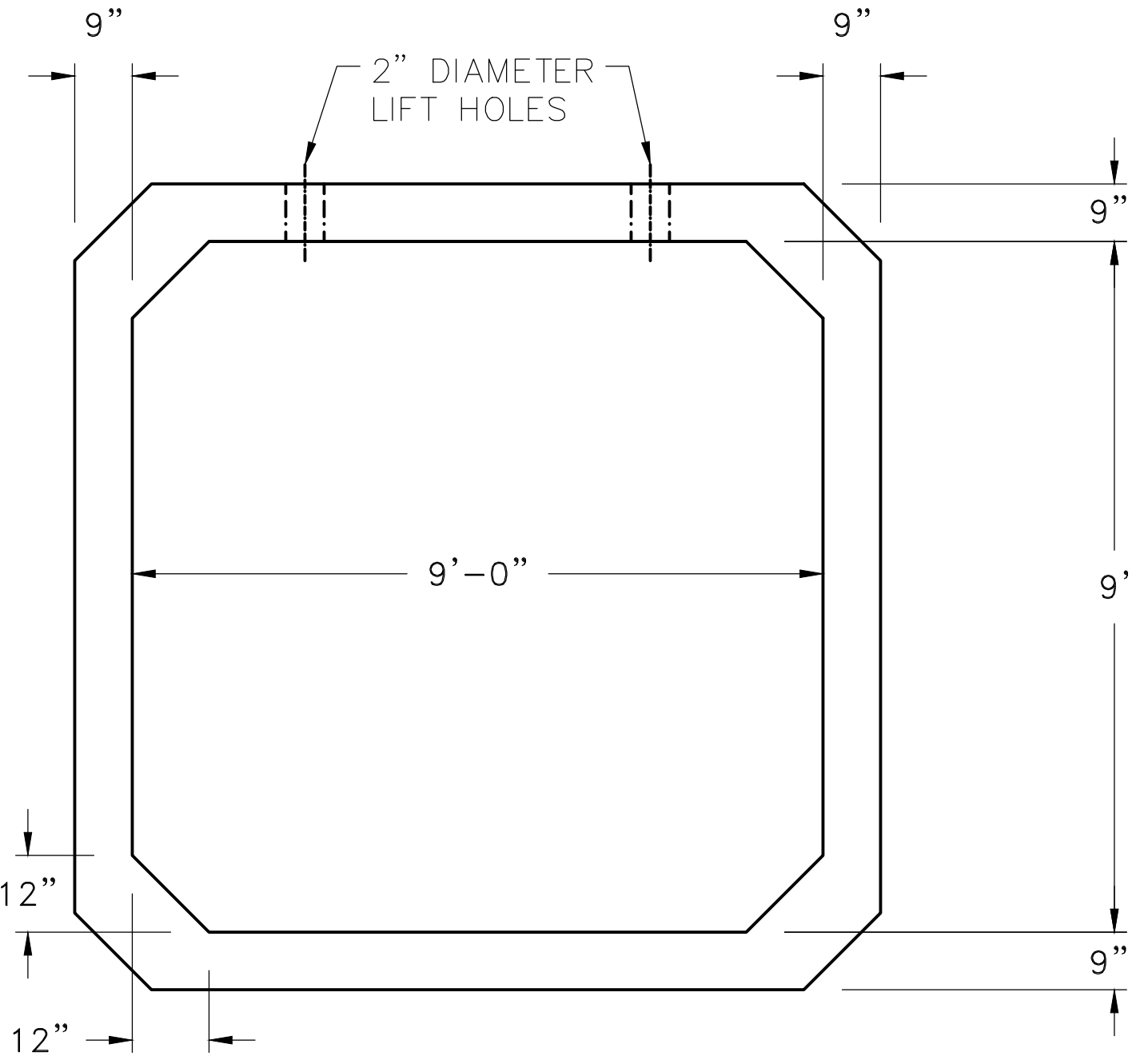


DRAWN BY JTM
DESIGNED JTM
CHECKED BJW
DATE 1-18-19
SCALE N.T.S.
PROJECT NO. CLR #01-17-DR-9
SHEET NO. C2

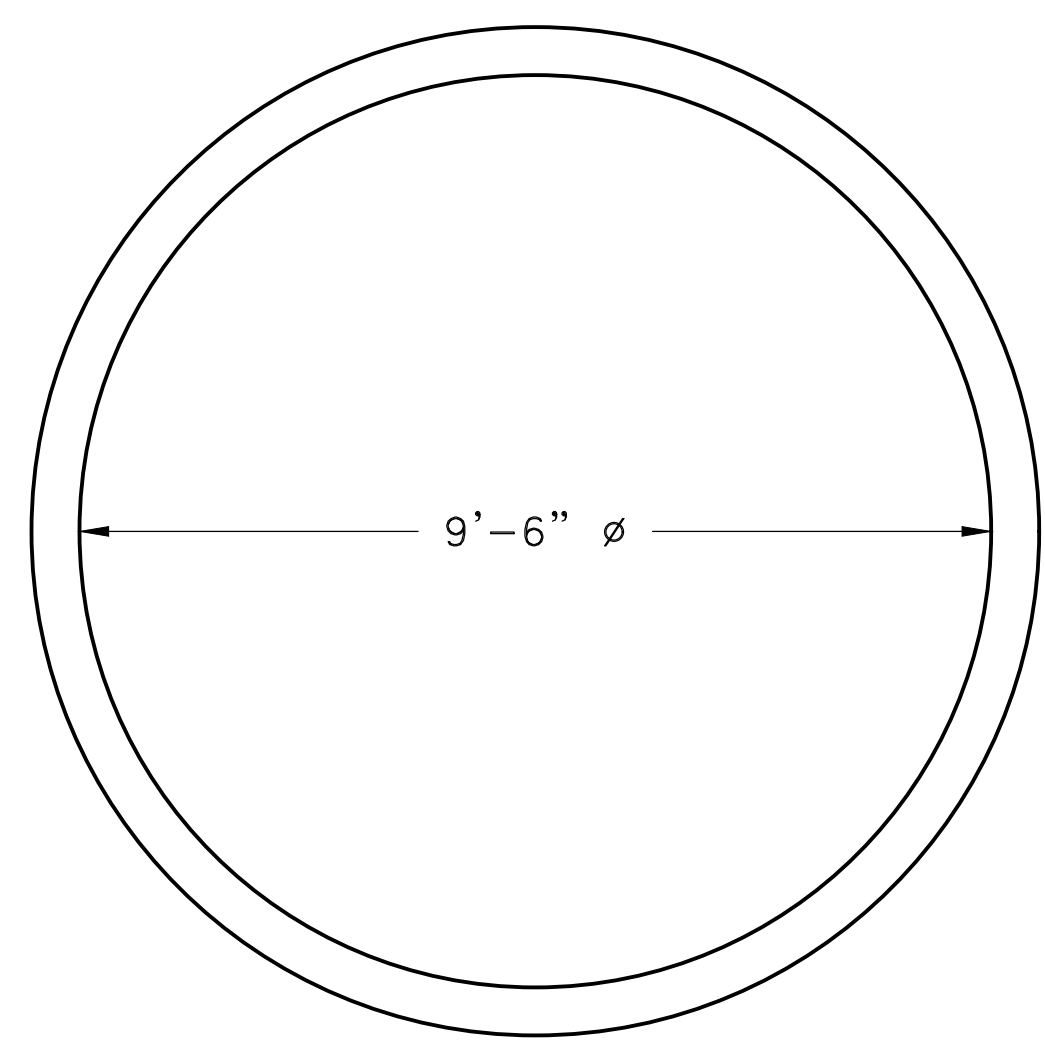
REVISIONS	DATE



TYPICAL ROAD SECTION



BOX CULVERT SECTION

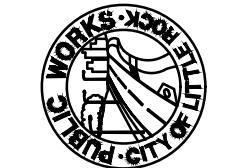


METAL PIPE SECTION

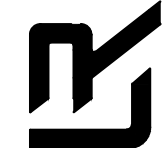
GENERAL NOTES:

1. INVERT OF EXISTING 9'-6" METAL PIPE SHALL BE GROUDED IN ALL AREAS WHERE PIPE IS NOT REPLACED.
2. IN AREAS TO RECIEVE BITUMINOUS PAVING, CONCRETE DRIVEWAYS, OR CURB AND GUTTER, SUBGRADE SHALL BE COMPACTED TO A DENSITY LESS THAN 95% OF MAXIMUM DENSITY OBTAINED AT OPTIMUM MOISTURE CONTENT. (AASHTO T-180)
3. FOR AREAS OF SUBGRADE PREPARATION TO RECIEVE CONCRETE SIDEWALKS, SUBGRADE SHALL BE COMPACTED TO A DENSITY 90% MAXIMUM. (AASHTO T-180)
4. CENTERLINE PROFILE WILL REQUIRE HEAD GREATER THAN CURB STREETS TO MAINTAIN 2% CROSS-SLOPE.
5. CRUSHED STONE - DENSITY OF COMPACTED MATERIAL IN EACH COURSE SHALL BE COMPACTED TO A DENSITY 100% MAXIMUM. (AASHTO T-191)
6. BOX CULVERT: 9' RISE X 9' SPAN H-20 LOADING FROM FORTERRA INC. OR APPROVED EQUAL

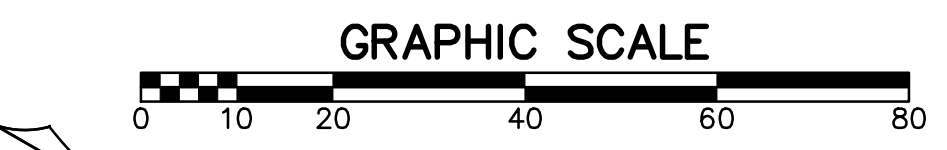
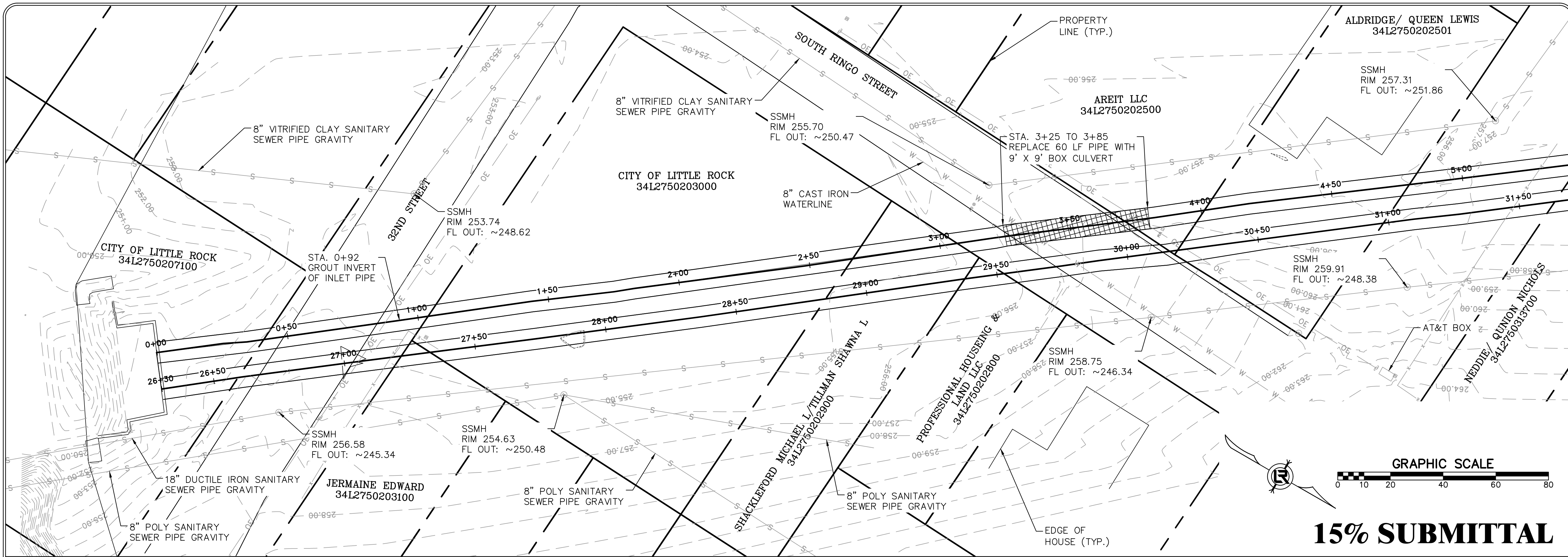
CITY OF LITTLE ROCK, ARKANSAS
 SWAGGERTY DRAINAGE IMPROVEMENTS
 TYPICAL SECTIONS



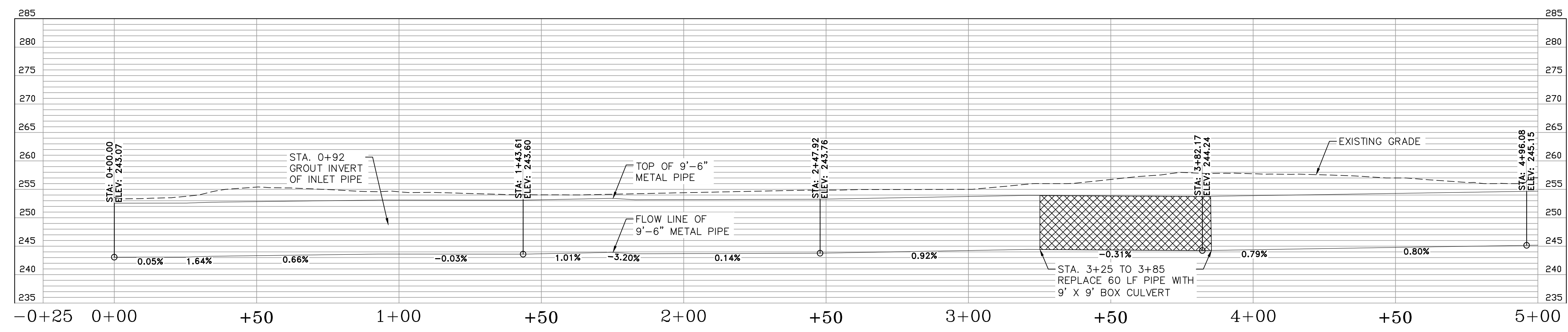
DEPARTMENT OF PUBLIC WORKS
 CIVIL ENGINEERING
 701 W. MARKHAM
 LITTLE ROCK, ARKANSAS 72201



DRAWN BY	JTM
DESIGNED	JTM
CHECKED	BJW
DATE	1-18-19
SCALE	NTS
PROJECT NO.	CLR #01-17-DR-9
SHEET NO.	C3



15% SUBMITTAL

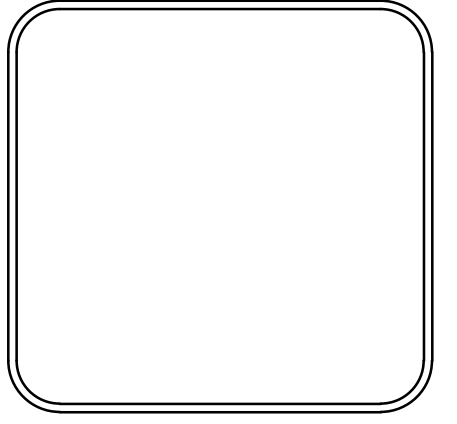


WEST PIPE

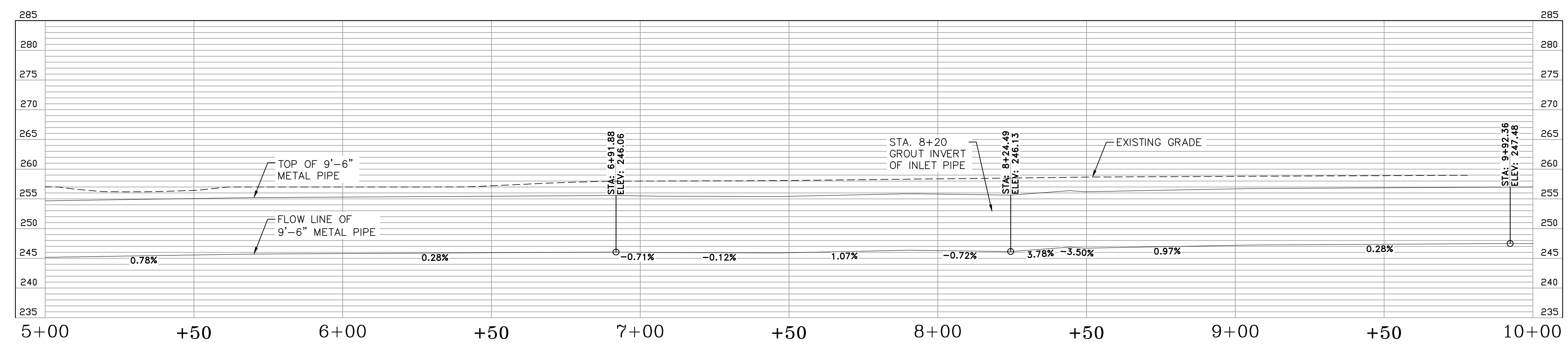
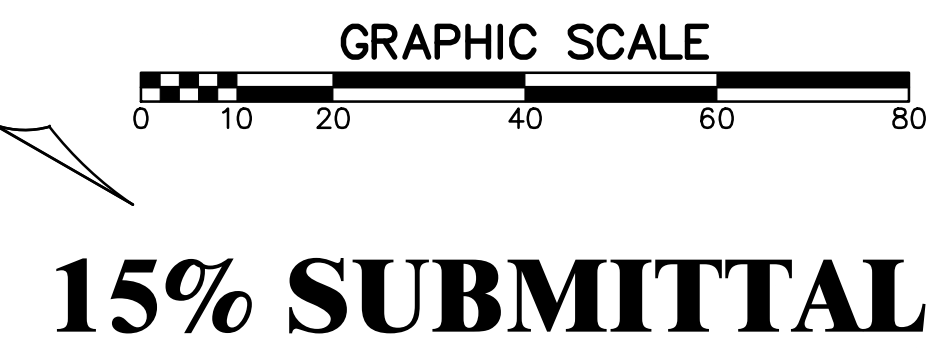
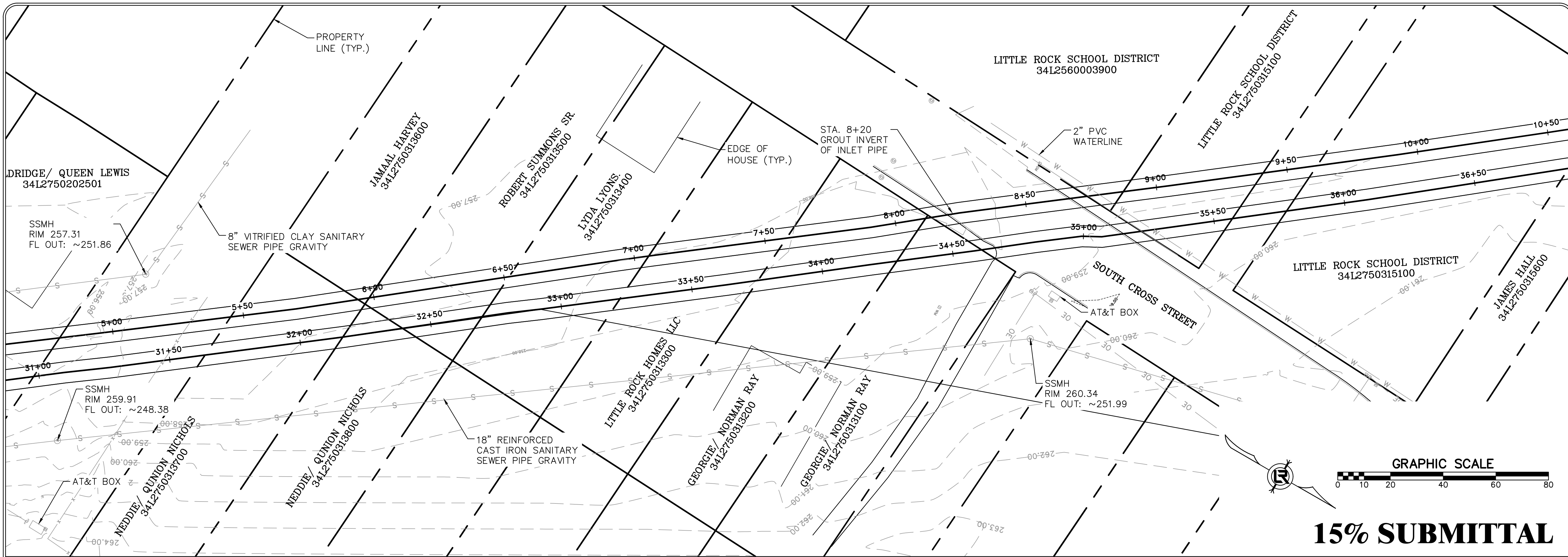
REVISIONS	DATE

CITY OF LITTLE ROCK, ARKANSAS
SWAGGERTY DRAINAGE IMPROVEMENTS
 PLAN AND PROFILE SHEET (1)

DEPARTMENT OF PUBLIC WORKS
 CIVIL ENGINEERING
 701 W. MARKHAM
 LITTLE ROCK, ARKANSAS 72201



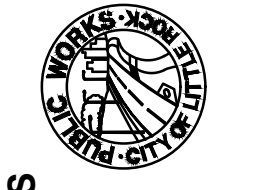
DRAWN BY JTM
DESIGNED JTM
CHECKED BJW
DATE 1-18-19
SCALE NTS
PROJECT NO. CLR #01-17-DR-9
SHEET NO. C4

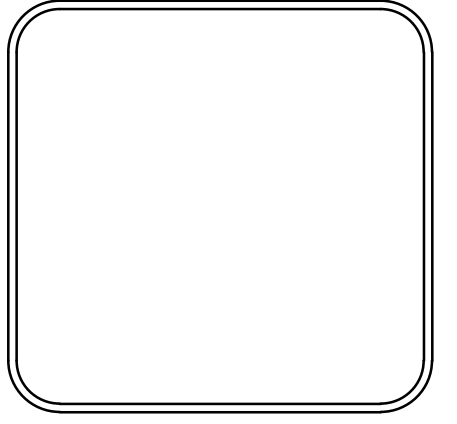


WEST PIPE

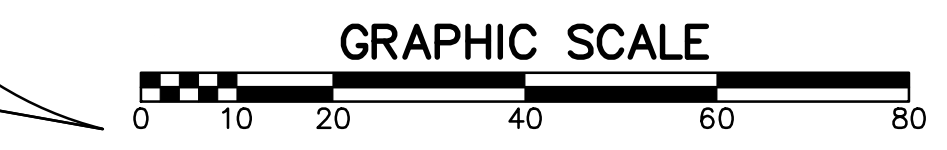
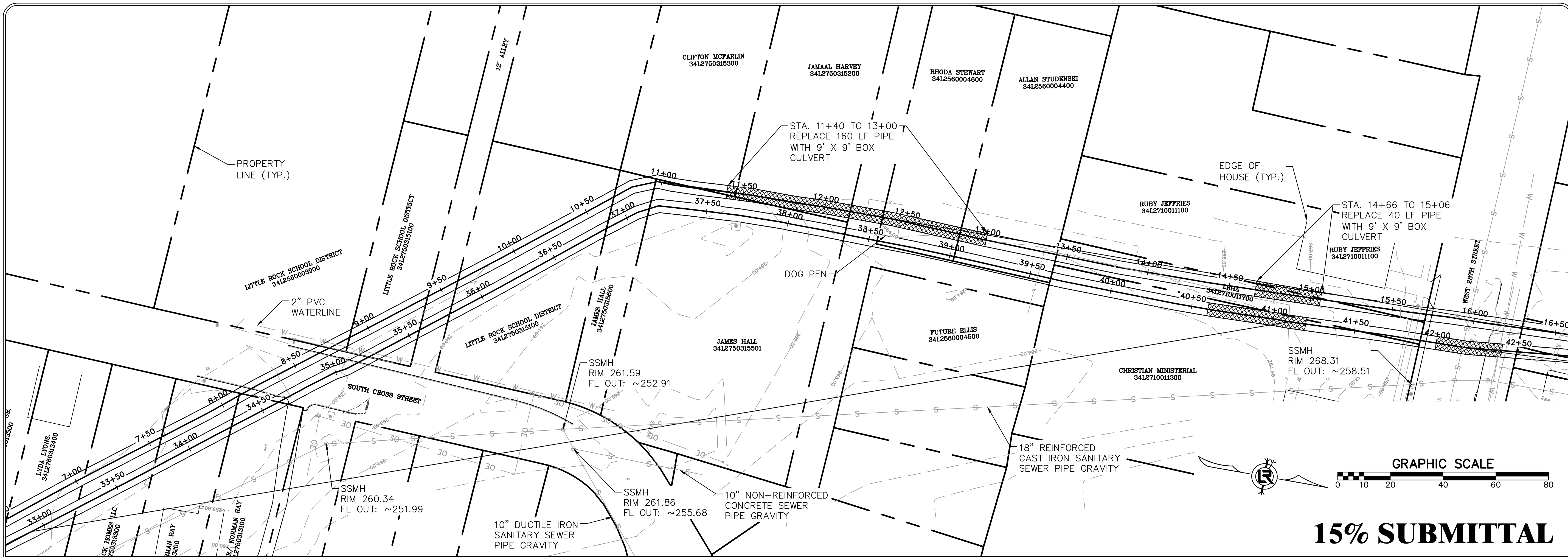
REVISIONS	DATE

CITY OF LITTLE ROCK, ARKANSAS
SWAGGERTY DRAINAGE IMPROVEMENTS
 PLAN AND PROFILE SHEET (2)

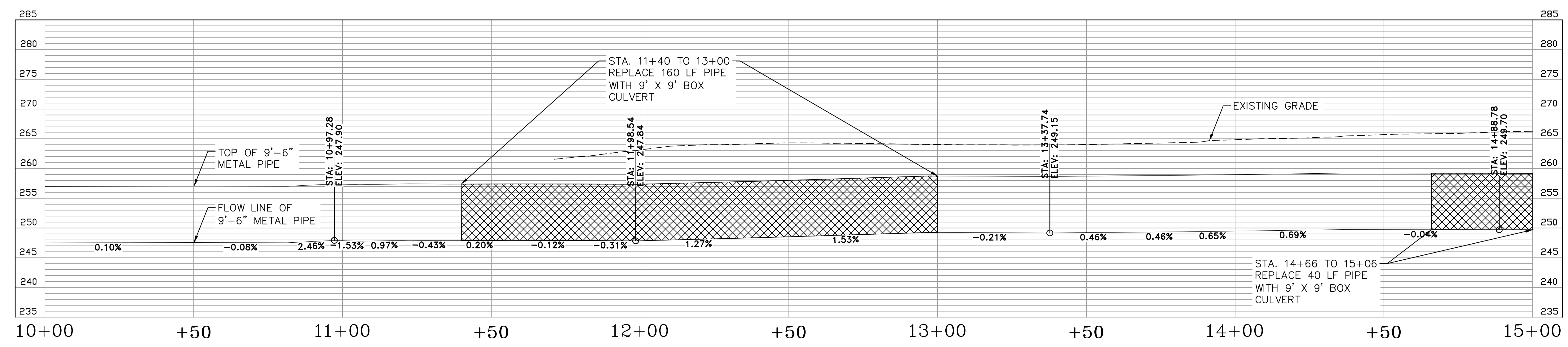

 DEPARTMENT OF PUBLIC WORKS
 CIVIL ENGINEERING
 701 W. MARKHAM
 LITTLE ROCK, ARKANSAS 72201



DRAWN BY JTM
DESIGNED JTM
CHECKED BJW
DATE 1-18-19
SCALE NTS
PROJECT NO. CLR #01-17-DR-9
SHEET NO. C5



15% SUBMITTAL

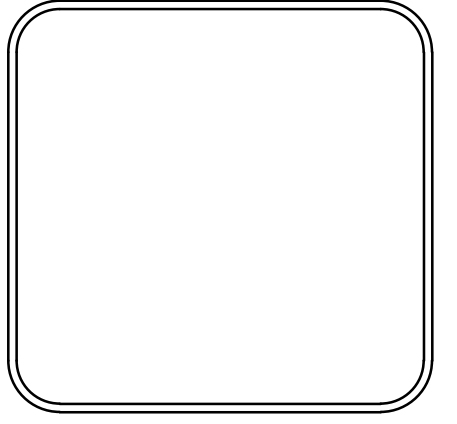


WEST PIPE

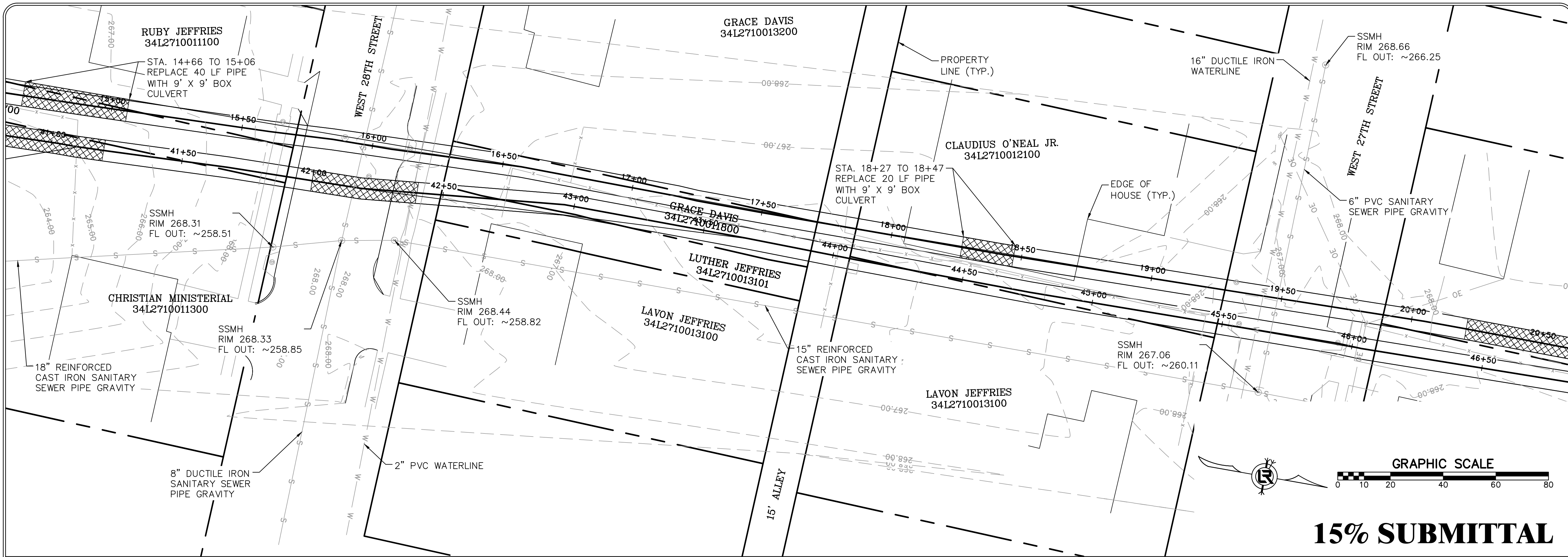
REVISIONS	DATE

CITY OF LITTLE ROCK, ARKANSAS
SWAGGERTY DRAINAGE IMPROVEMENTS
 PLAN AND PROFILE SHEET (3)

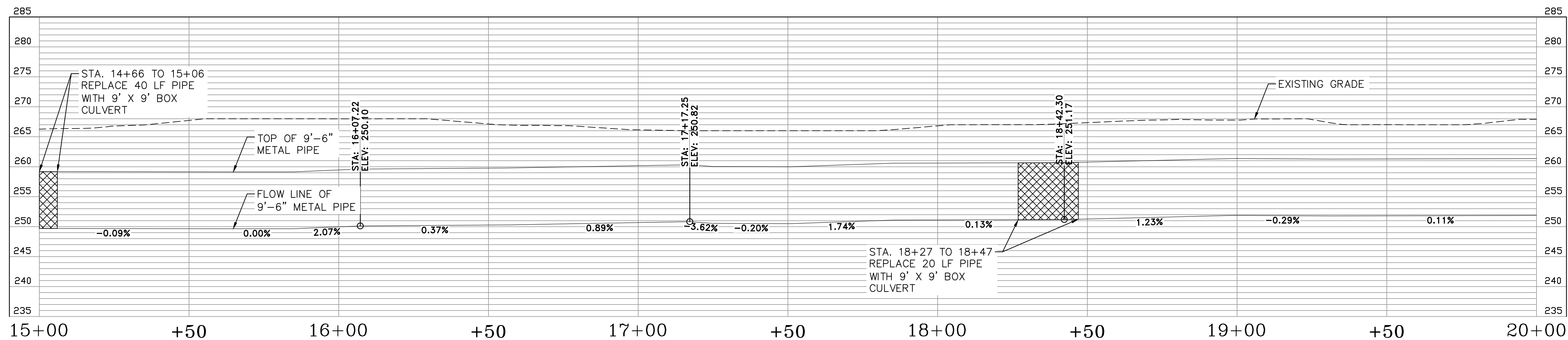
DEPARTMENT OF PUBLIC WORKS
 CIVIL ENGINEERING
 701 W. MARKHAM
 LITTLE ROCK, ARKANSAS 72201



DRAWN BY JTM
DESIGNED JTM
CHECKED BJW
DATE 1-18-19
SCALE NTS
PROJECT NO. CLR #01-17-DR-9
SHEET NO. C6



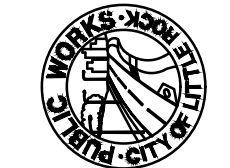
15% SUBMITTAL

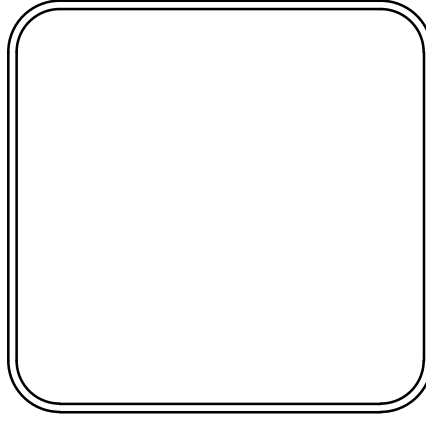


WEST PIPE

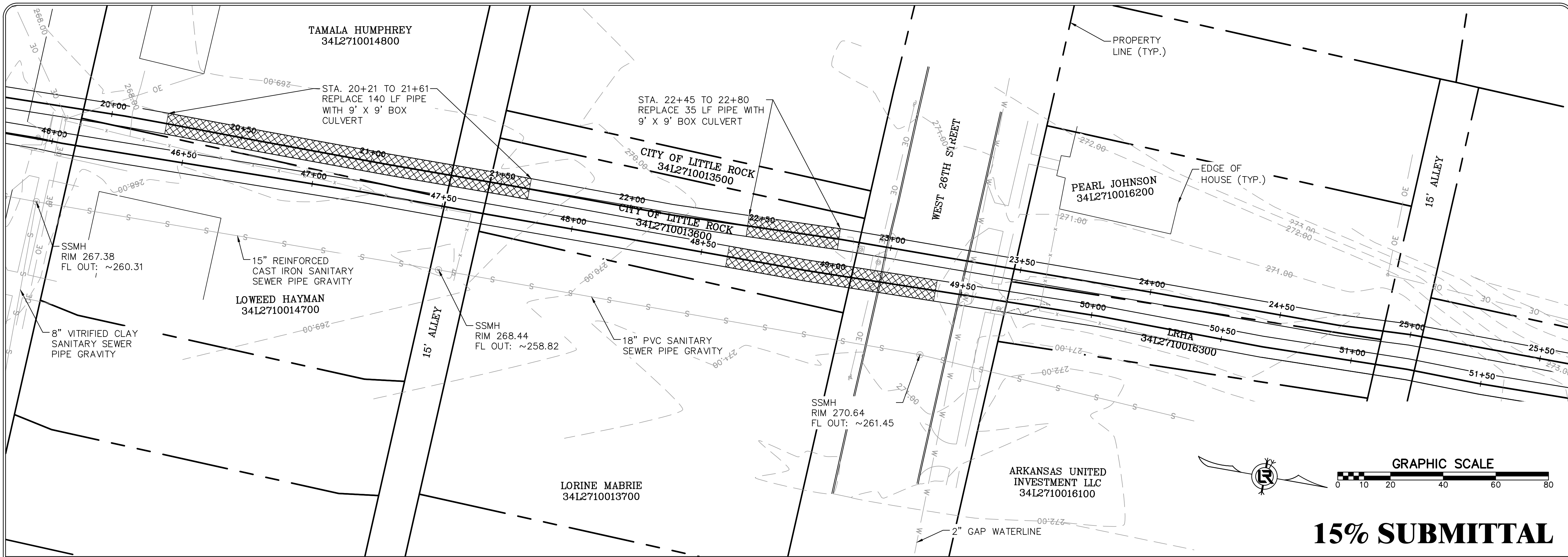
REVISIONS	DATE

CITY OF LITTLE ROCK, ARKANSAS
SWAGGERTY DRAINAGE IMPROVEMENTS
 PLAN AND PROFILE SHEET (4)

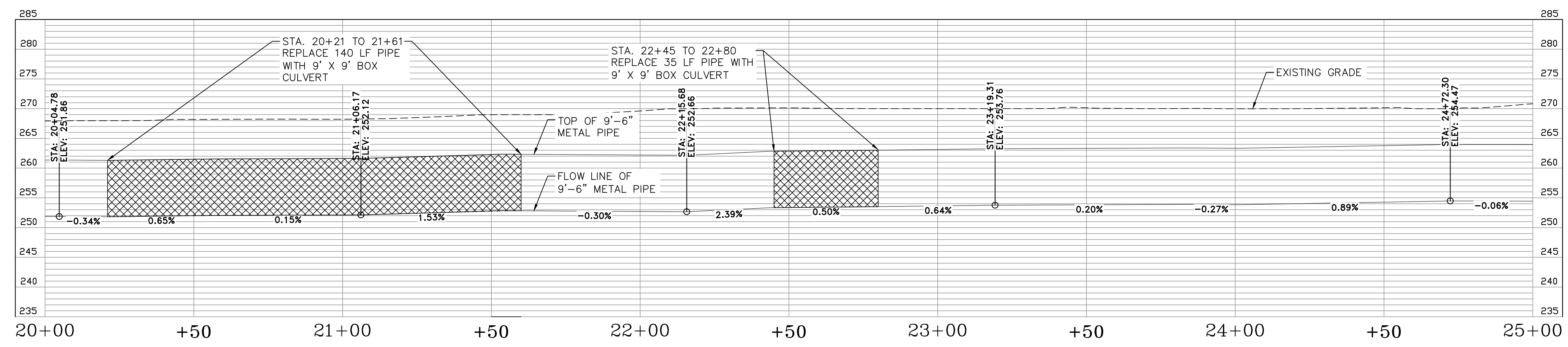

 DEPARTMENT OF PUBLIC WORKS
 CIVIL ENGINEERING
 701 W. MARKHAM
 LITTLE ROCK, ARKANSAS 72201



DRAWN BY JTM
DESIGNED JTM
CHECKED BJW
DATE 1-18-19
SCALE NTS
PROJECT NO. CLR #01-17-DR-9
SHEET NO. C7



15% SUBMITTAL

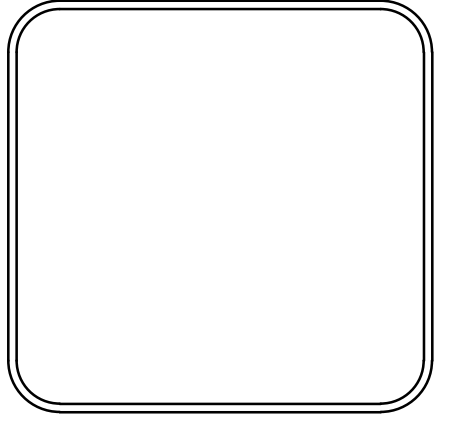


WEST PIPE

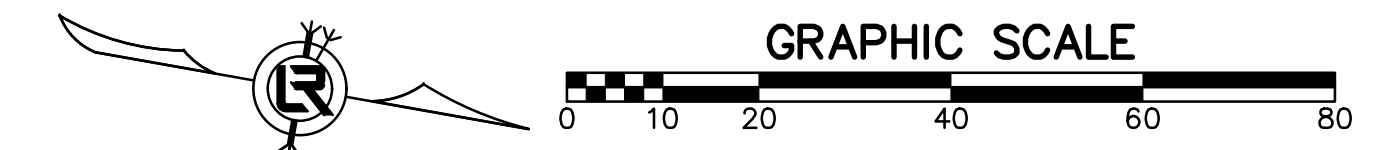
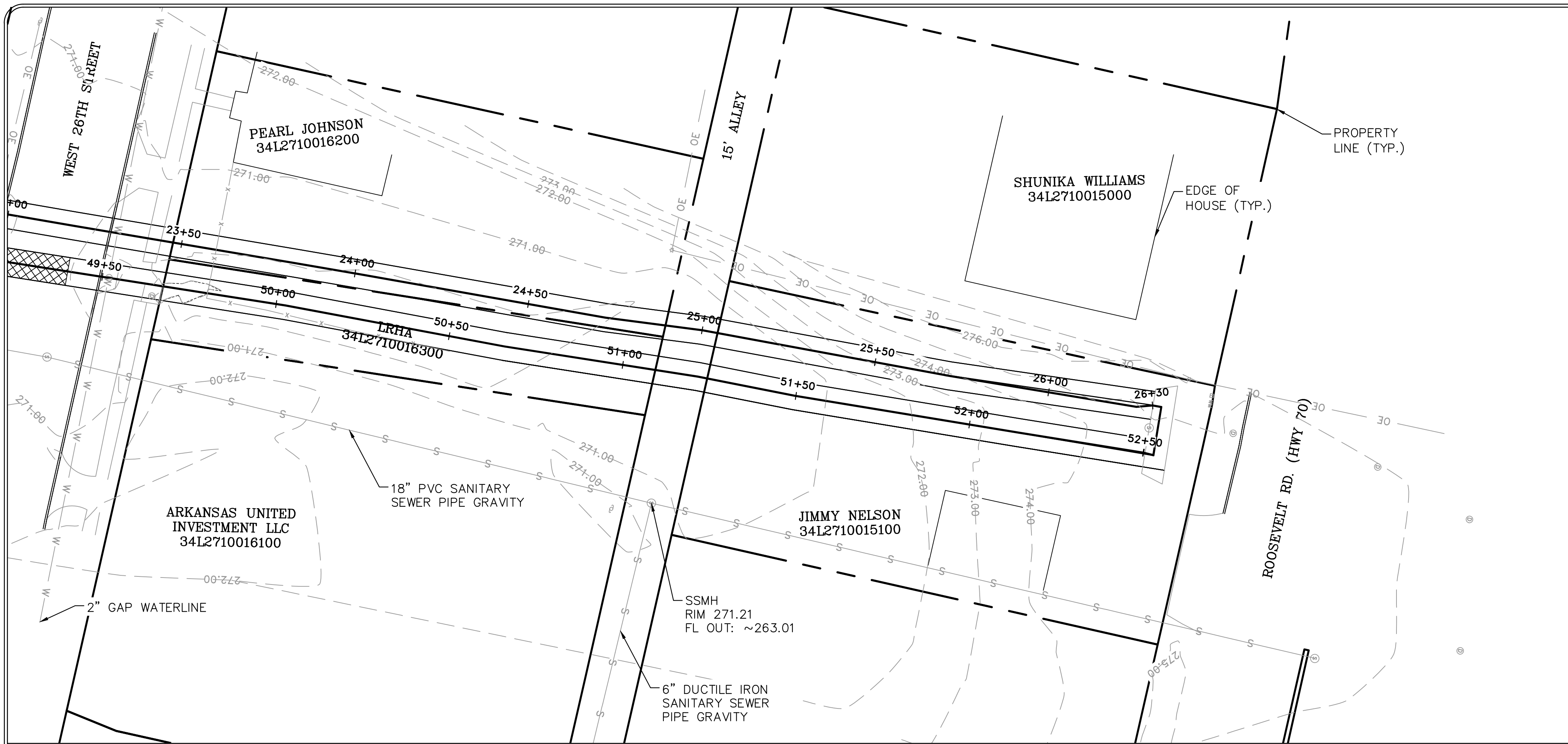
REVISIONS	DATE

CITY OF LITTLE ROCK, ARKANSAS
 SWAGGERTY DRAINAGE IMPROVEMENTS
 PLAN AND PROFILE SHEET (5)

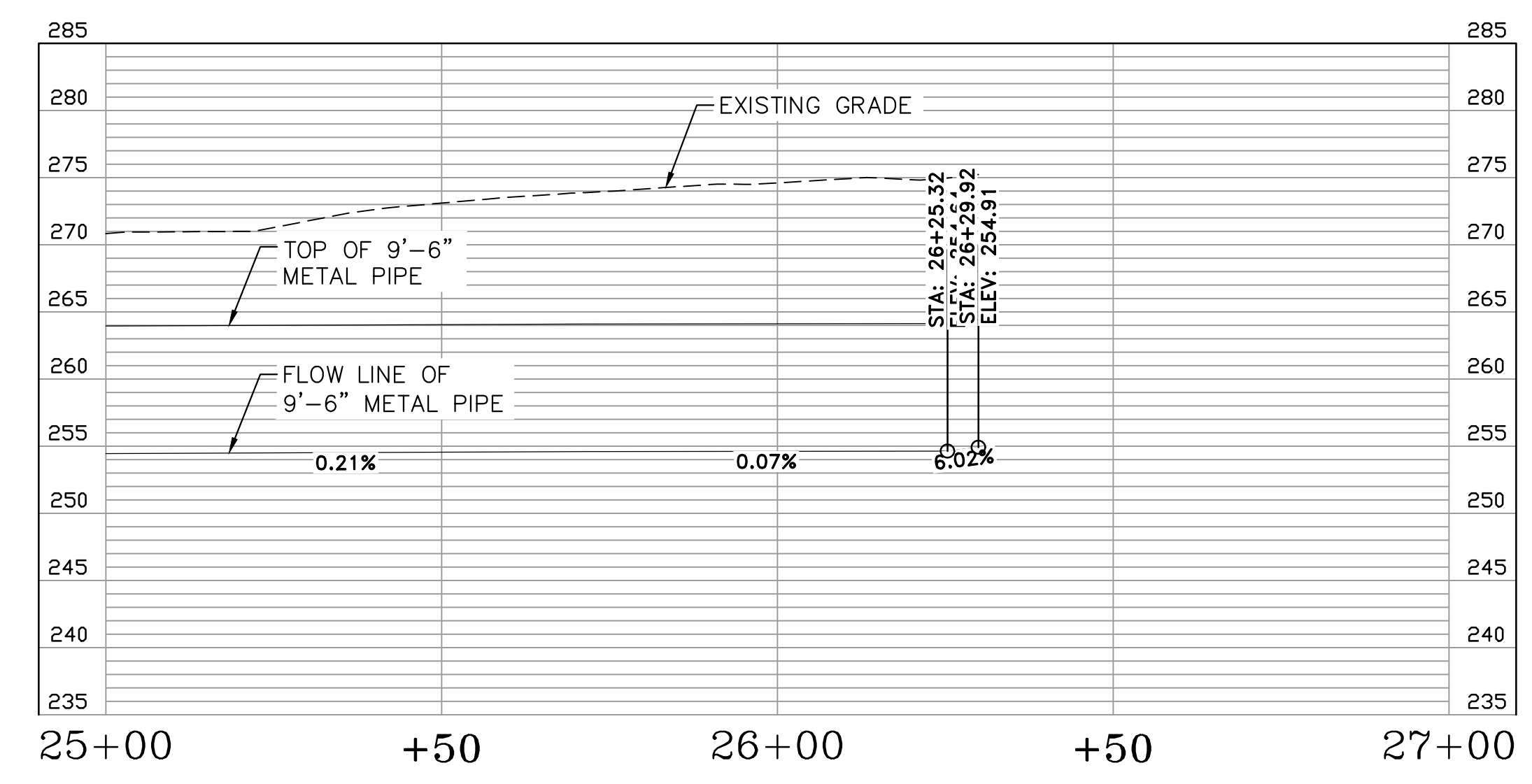
DEPARTMENT OF PUBLIC WORKS
 CIVIL ENGINEERING
 701 W. MARKHAM
 LITTLE ROCK, ARKANSAS 72201



DRAWN BY JTM
DESIGNED JTM
CHECKED BJW
DATE 1-18-19
SCALE NTS
PROJECT NO. CLR #01-17-DR-9
SHEET NO. C8




15% SUBMITTAL

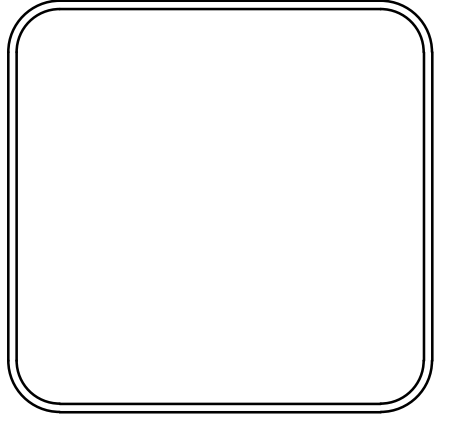


WEST PIPE

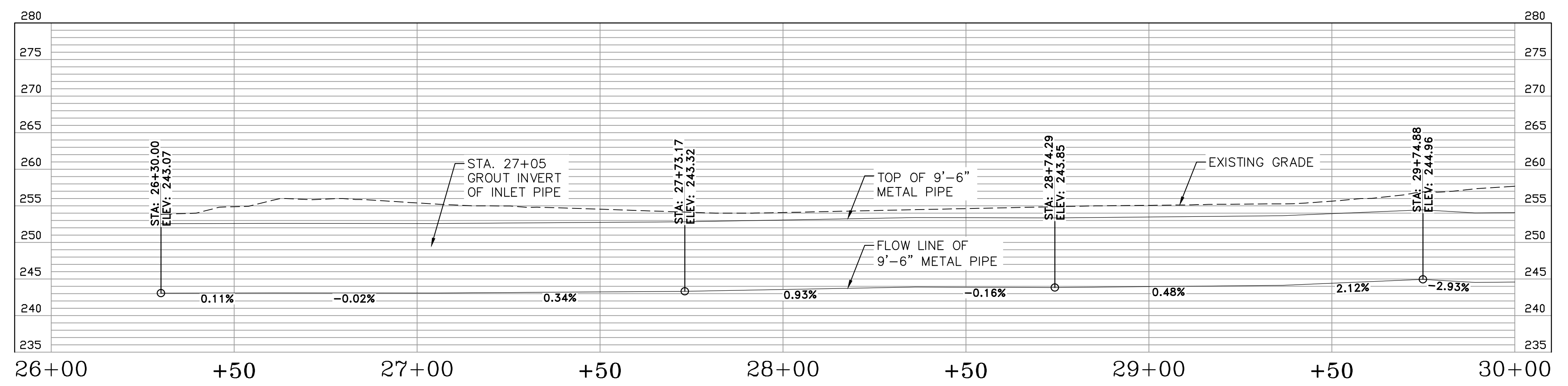
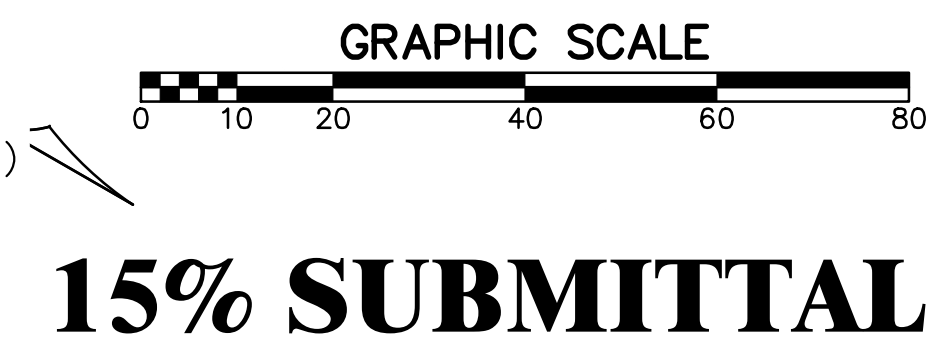
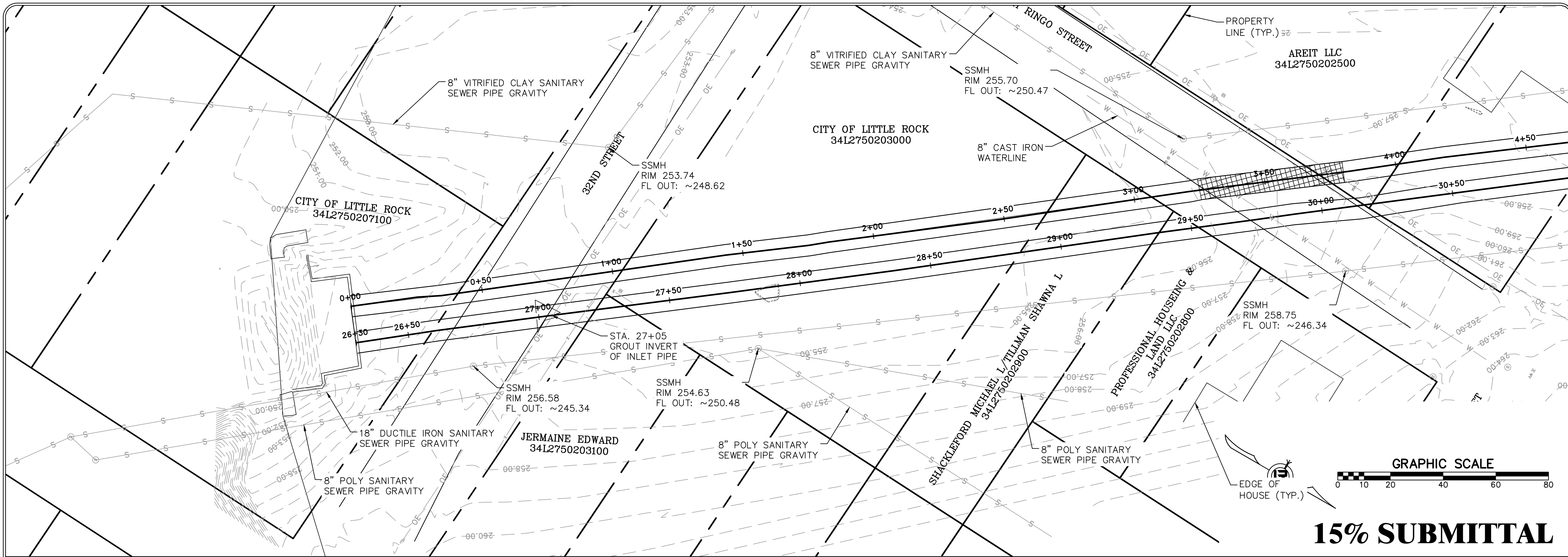
REVISIONS	DATE

CITY OF LITTLE ROCK, ARKANSAS
SWAGGERTY DRAINAGE IMPROVEMENTS
 PLAN AND PROFILE SHEET (6)


 DEPARTMENT OF PUBLIC WORKS
 CIVIL ENGINEERING
 701 W. MARKHAM
 LITTLE ROCK, ARKANSAS 72201



DRAWN BY JTM
DESIGNED JTM
CHECKED BJW
DATE 1-18-19
SCALE NTS
PROJECT NO. CLR #01-17-DR-9
SHEET NO. C9

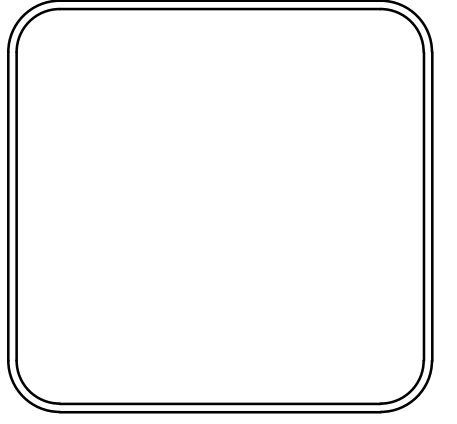


EAST PIPE

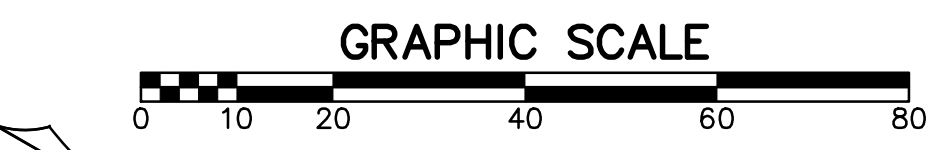
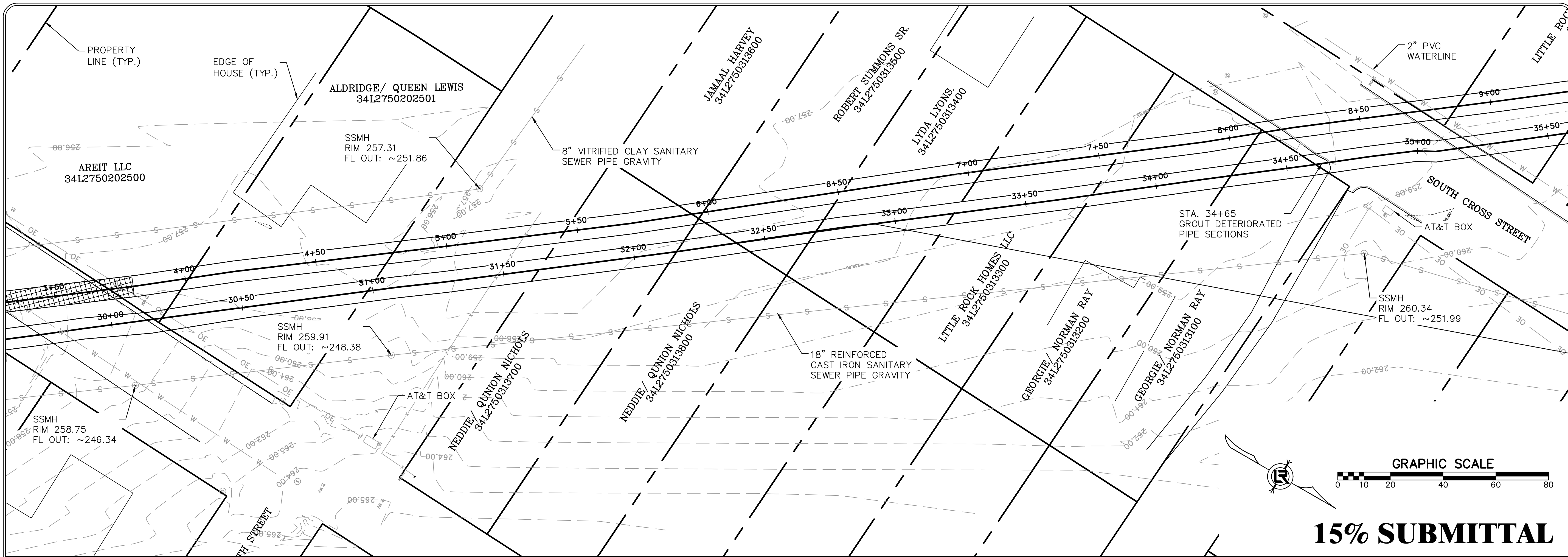
REVISIONS	DATE

CITY OF LITTLE ROCK, ARKANSAS
SWAGGERTY DRAINAGE IMPROVEMENTS
 PLAN AND PROFILE SHEET (7)

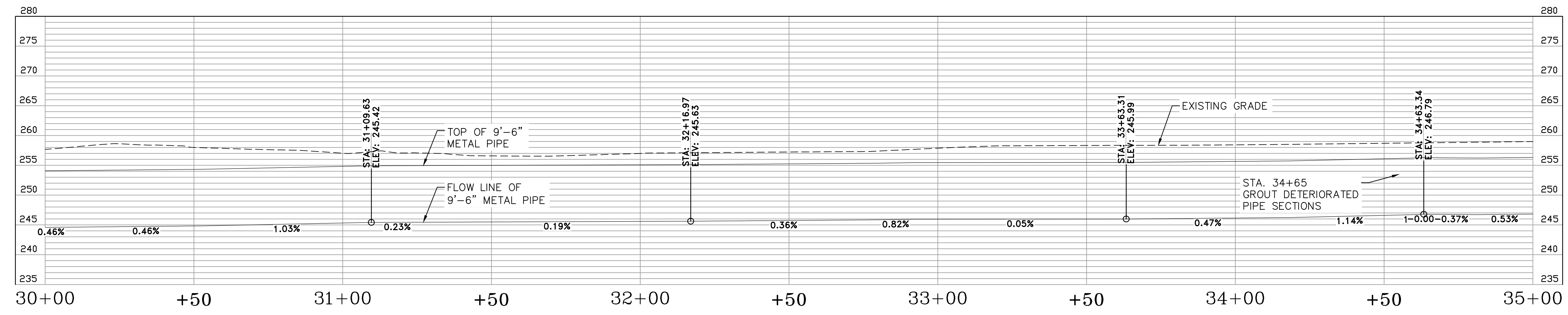
DEPARTMENT OF PUBLIC WORKS
 CIVIL ENGINEERING
 701 W. MARKHAM
 LITTLE ROCK, ARKANSAS 72201



DRAWN BY JTM
DESIGNED JTM
CHECKED BJW
DATE 1-18-19
SCALE NTS
PROJECT NO. CLR #01-17-DR-9
SHEET NO. C10



15% SUBMITTAL

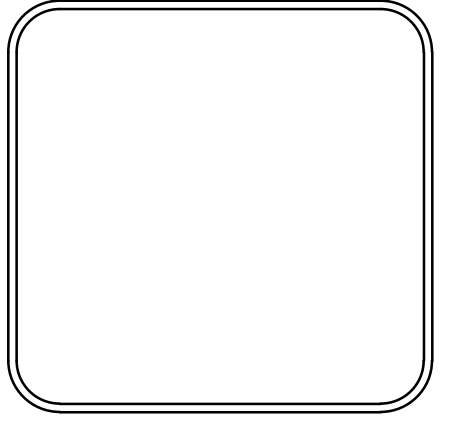


EAST PIPE

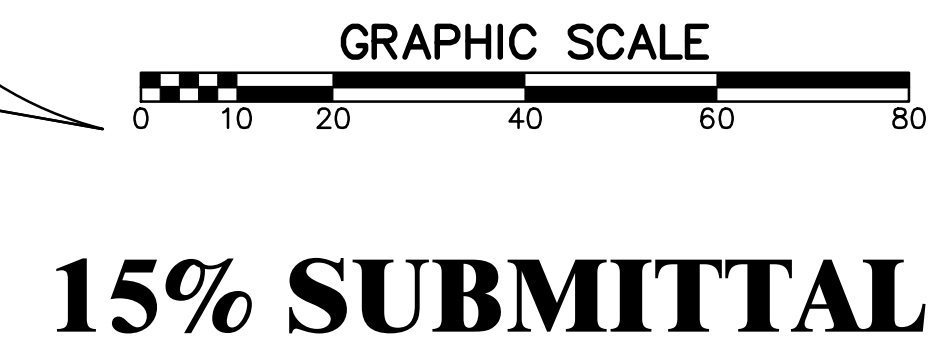
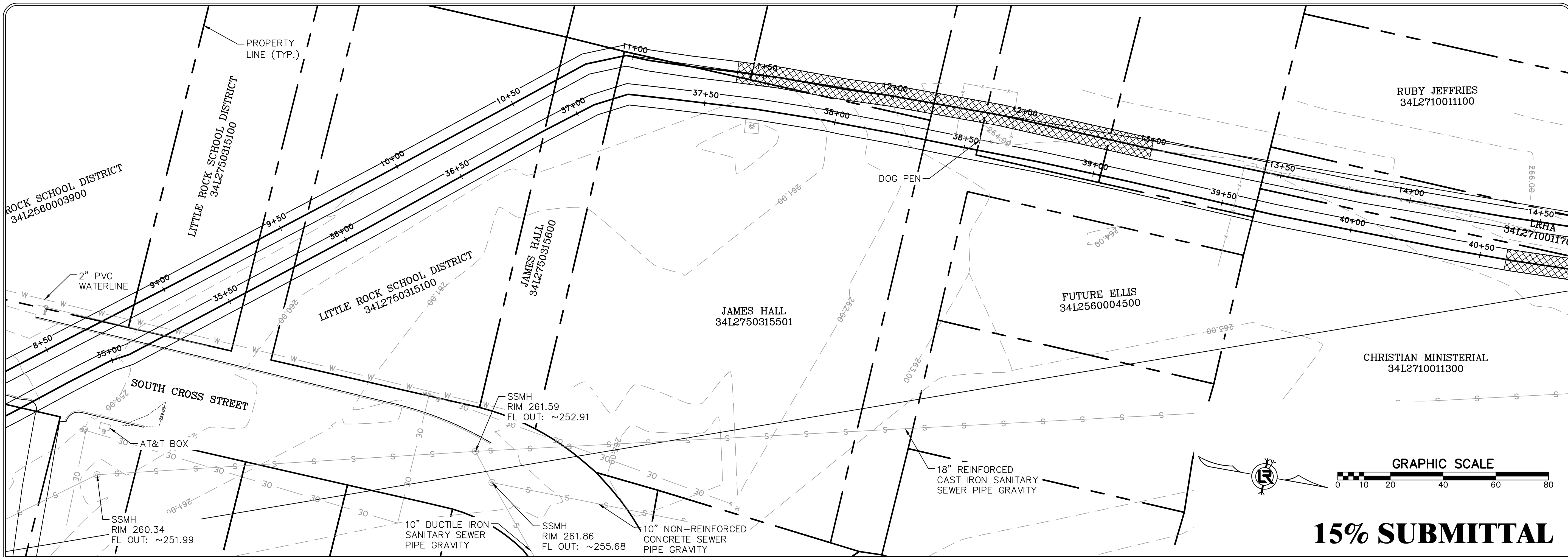
REVISIONS	DATE

CITY OF LITTLE ROCK, ARKANSAS
SWAGGERTY DRAINAGE IMPROVEMENTS
 PLAN AND PROFILE SHEET (8)

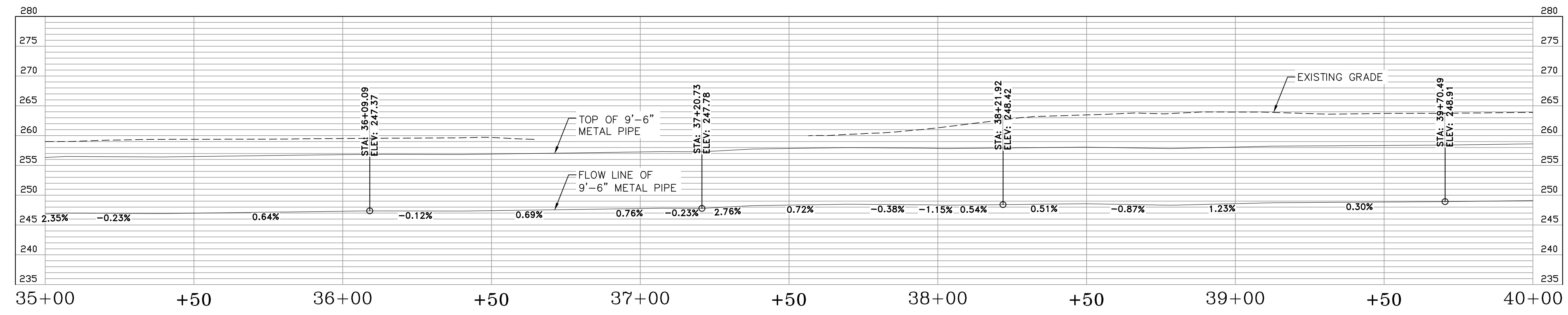
DEPARTMENT OF PUBLIC WORKS
 CIVIL ENGINEERING
 701 W. MARKHAM
 LITTLE ROCK, ARKANSAS 72201



DRAWN BY JTM
DESIGNED JTM
CHECKED BJW
DATE 1-18-19
SCALE NTS
PROJECT NO. CLR #01-17-DR-9
SHEET NO. C11



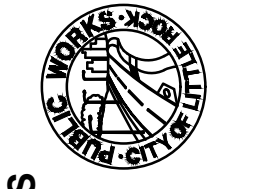
15% SUBMITTAL

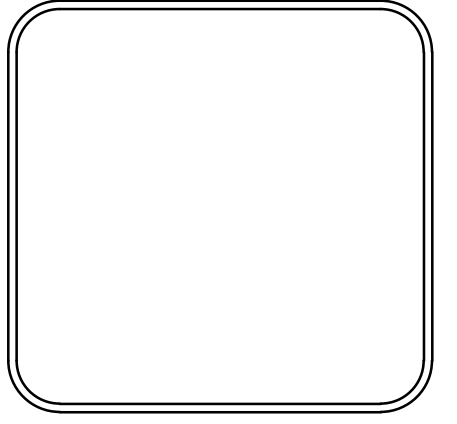


EAST PIPE

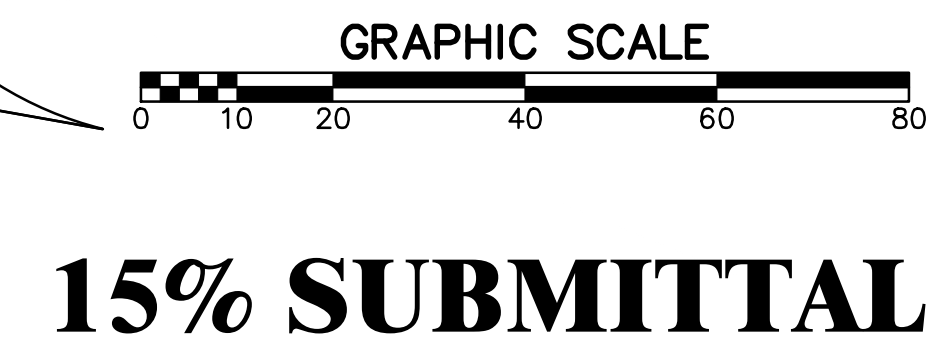
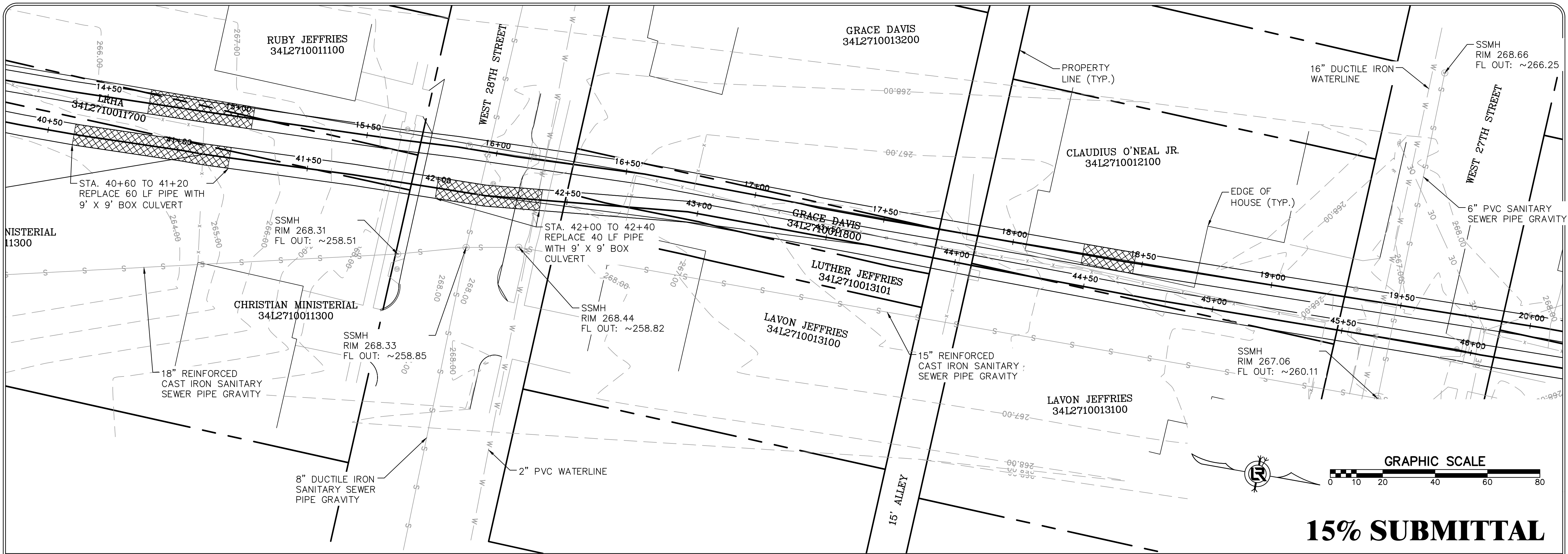
REVISIONS	DATE

CITY OF LITTLE ROCK, ARKANSAS
SWAGGERTY DRAINAGE IMPROVEMENTS
 PLAN AND PROFILE SHEET (9)


 DEPARTMENT OF PUBLIC WORKS
 CIVIL ENGINEERING
 701 W. MARKHAM
 LITTLE ROCK, ARKANSAS 72201




DRAWN BY
 JTM
DESIGNED
 JTM
CHECKED
 BJW
DATE
 1-18-19
SCALE
 NTS
PROJECT NO.
 CLR #01-17-DR-9
SHEET NO.
C12

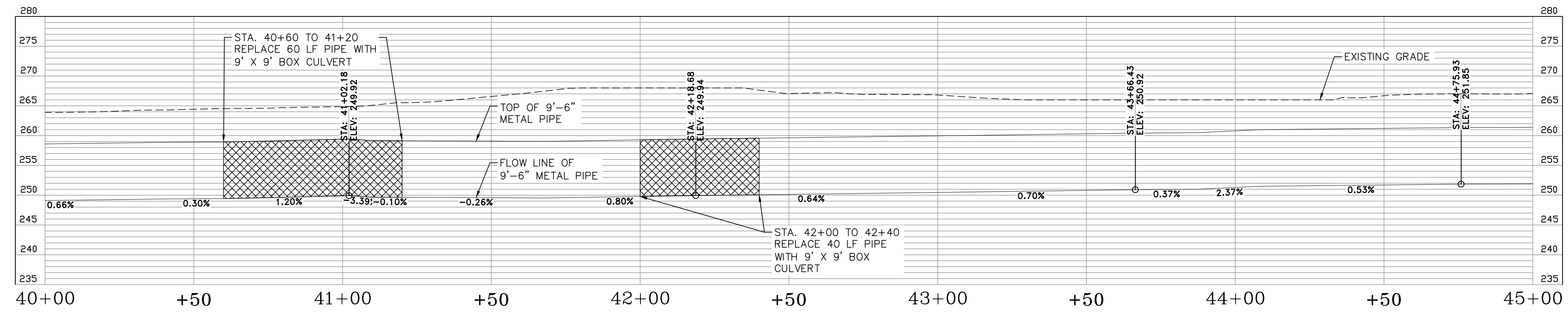


15% SUBMITTAL

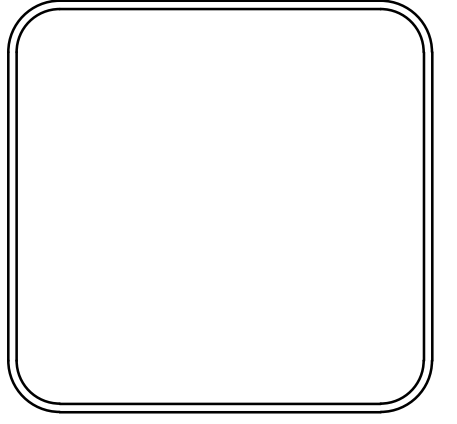
REVISIONS	DATE

CITY OF LITTLE ROCK, ARKANSAS
SWAGGERTY DRAINAGE IMPROVEMENTS
 PLAN AND PROFILE SHEET (10)

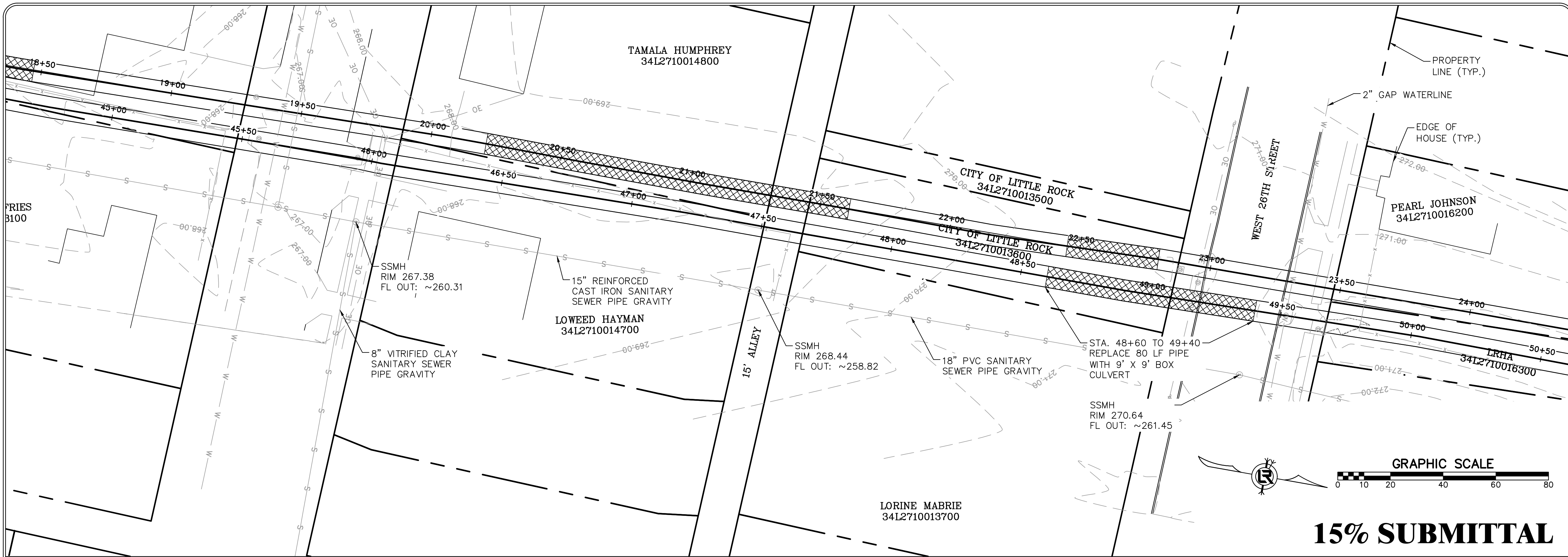

 DEPARTMENT OF PUBLIC WORKS
 CIVIL ENGINEERING
 701 W. MARKHAM
 LITTLE ROCK, ARKANSAS 72201



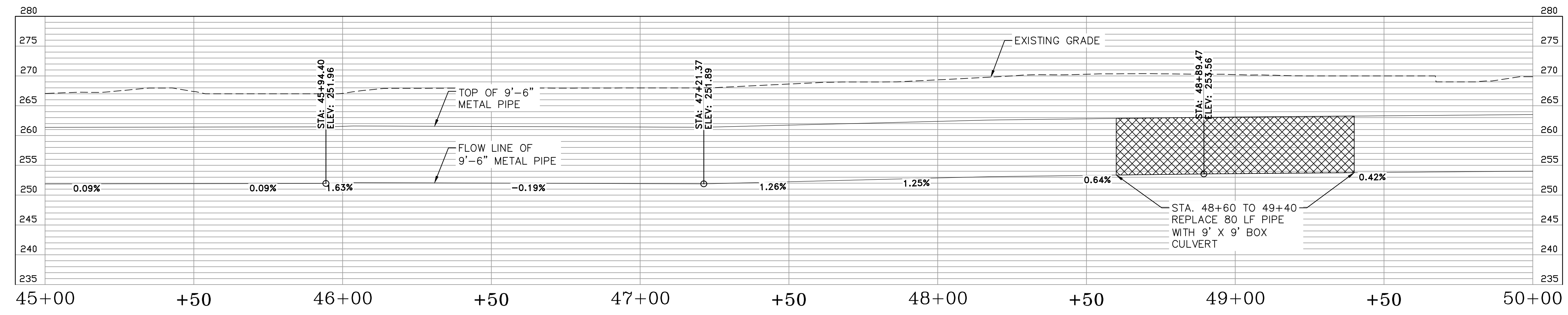
EAST PIPE



DRAWN BY
JTM
DESIGNED
JTM
CHECKED
BJW
DATE
1-18-19
SCALE
NTS
PROJECT NO.
CLR #01-17-DR-9
SHEET NO.
C13



15% SUBMITTAL

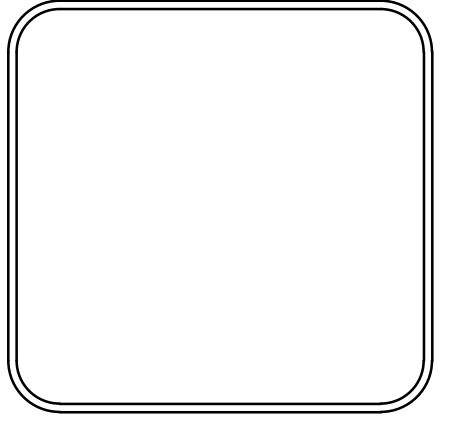


EAST PIPE

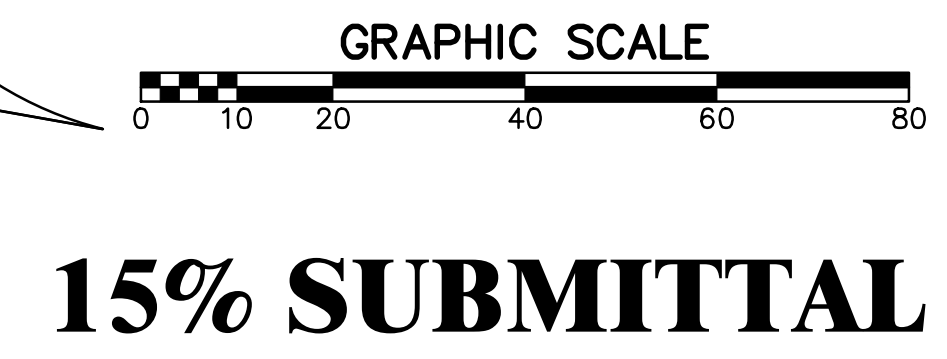
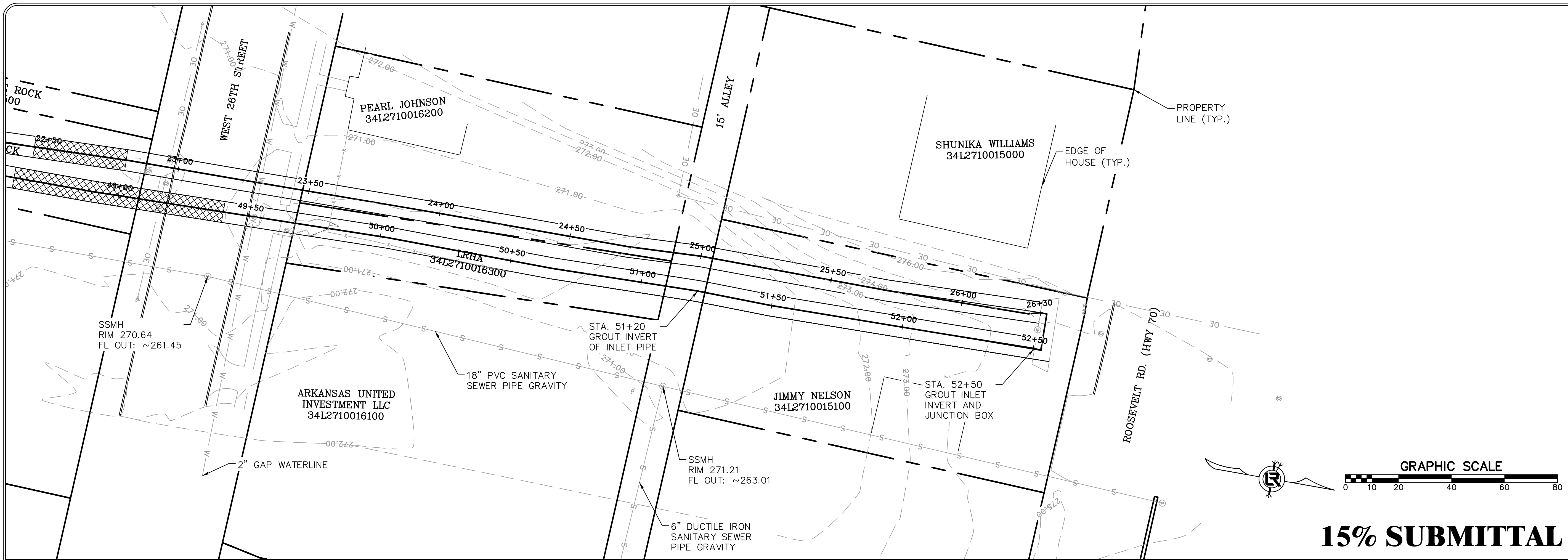
REVISIONS	DATE

CITY OF LITTLE ROCK, ARKANSAS
 SWAGGERTY DRAINAGE IMPROVEMENTS
 PLAN AND PROFILE SHEET (11)

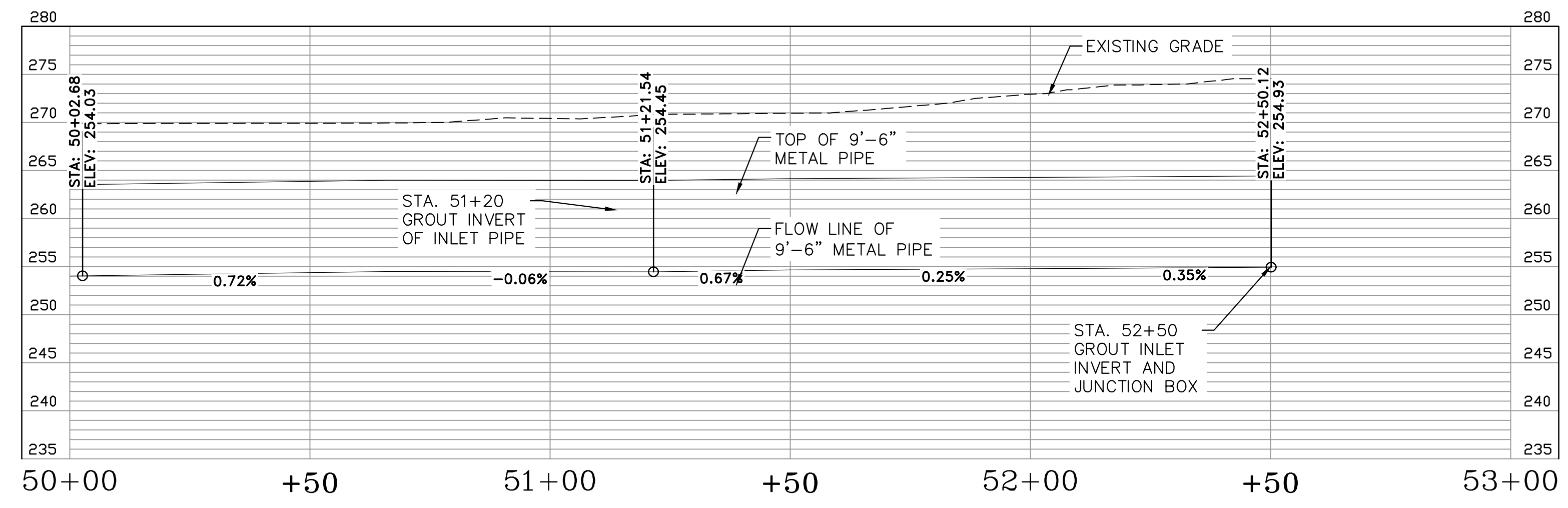
DEPARTMENT OF PUBLIC WORKS
 CIVIL ENGINEERING
 701 W. MARKHAM
 LITTLE ROCK, ARKANSAS 72201



DRAWN BY JTM
DESIGNED JTM
CHECKED BJW
DATE 1-18-19
SCALE NTS
PROJECT NO. CLR #01-17-DR-9
SHEET NO. C14



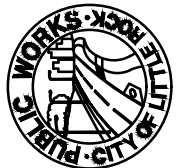
15% SUBMITTAL

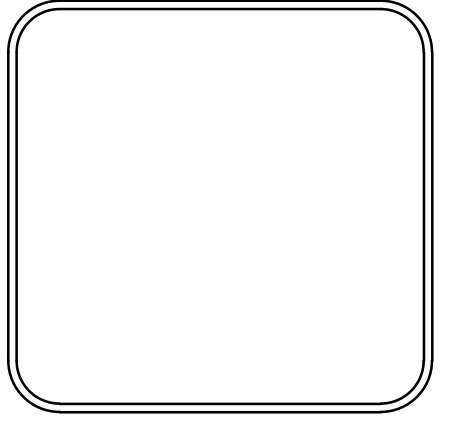


EAST PIPE

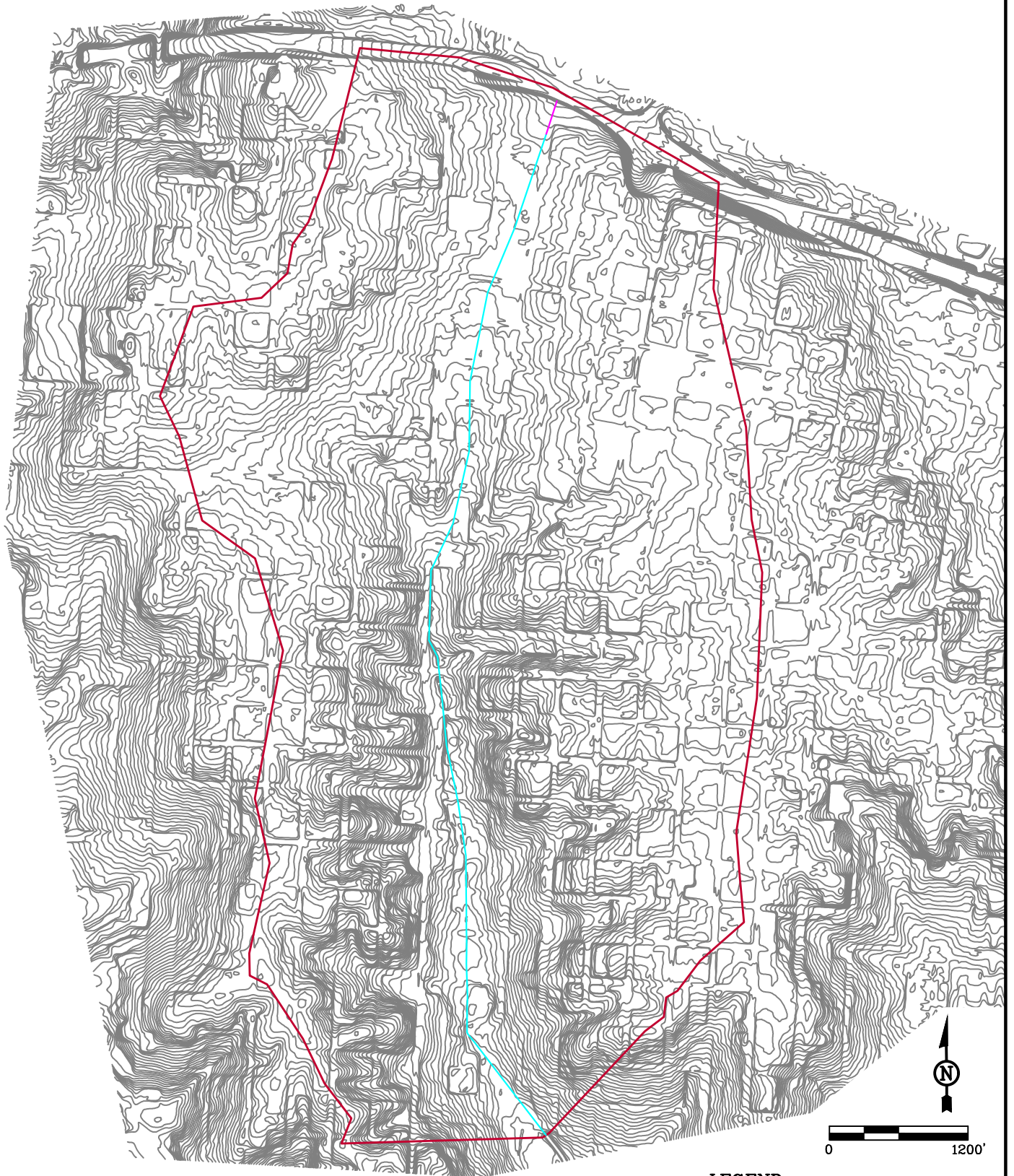
REVISIONS	DATE

CITY OF LITTLE ROCK, ARKANSAS
SWAGGERTY DRAINAGE IMPROVEMENTS
 PLAN AND PROFILE SHEET (12)


 DEPARTMENT OF PUBLIC WORKS
 CIVIL ENGINEERING
 701 W. MARKHAM
 LITTLE ROCK, ARKANSAS 72201



DRAWN BY JTM
DESIGNED JTM
CHECKED BJW
DATE 1-18-19
SCALE NTS
PROJECT NO. CLR #01-17-DR-9
SHEET NO. C15



LEGEND:

- SUBBASIN = 820 ACRES
- OVERLAND FLOW
- CHANNELIZED FLOW

15% SUBMITTAL

PMI CIVIL ENGINEERING AND ENVIRONMENTAL SERVICES
 3512 South Shackleford Road
 Little Rock, Arkansas 72205
 (501) 221-7122 fx: (501) 221-7775

PRELIMINARY DRAINAGE MAP

CITY OF LITTLE ROCK
 PUBLIC WORKS DEPARTMENT
 SWAGGERTY DRAINAGE IMPROVEMENTS
 LITTLE ROCK, ARKANSAS

PROJECT NUMBER:
01-17-DR-9

SHEET NO.:
C6

DESIGNED: J. METRAILER DRAWN: J. METRAILER CHECKED: B. WINGFIELD DATE: JAN. 14, 2019