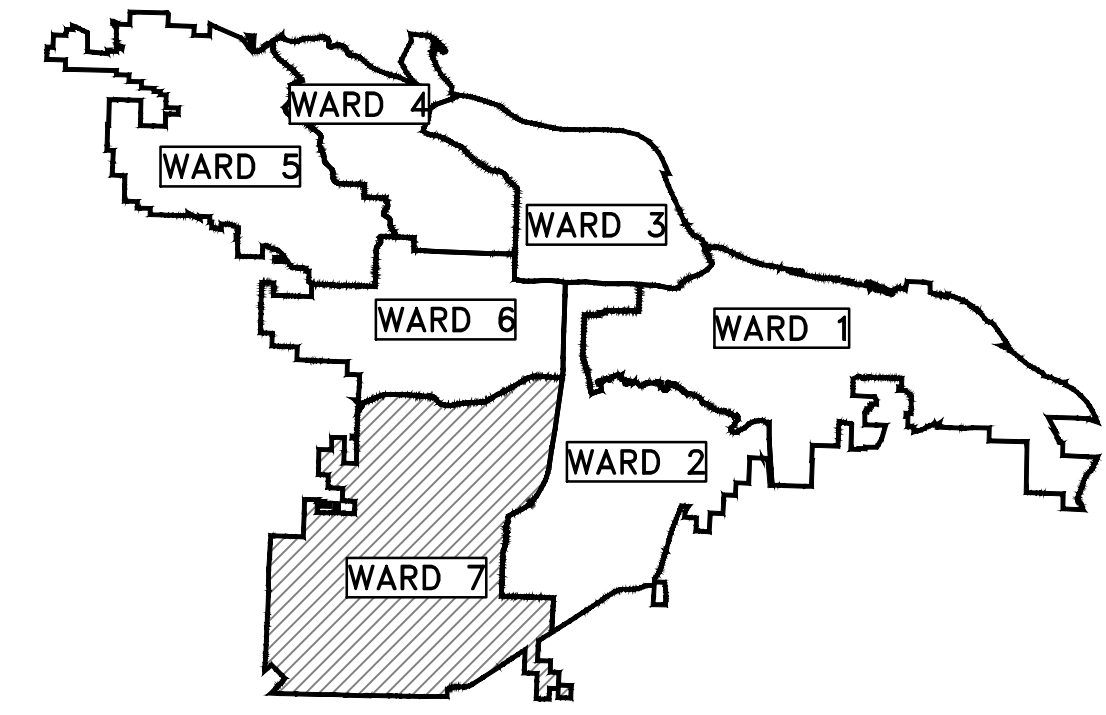
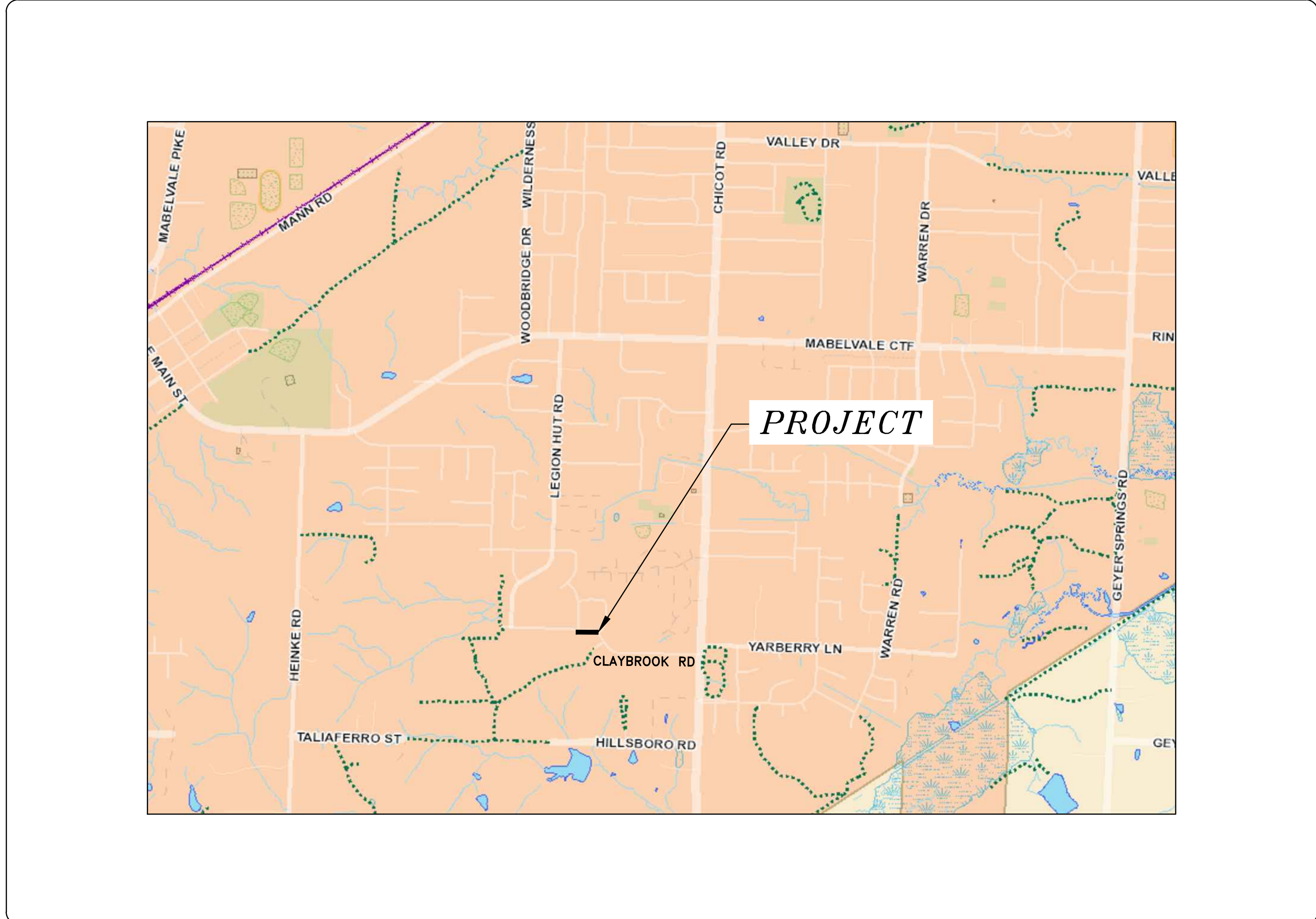


CLR PROJECT #07-16-DR-274 CLAYBROOK ROAD DRAINAGE

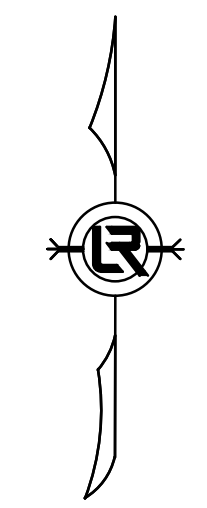


PROJECT LOCATION - WARD 7

SHEET NO.	TITLE
C1	COVER SHEET
C2	GENERAL NOTES, LEGEND AND QUANTITIES
C3	PLAN AND PROFILE SHEET
C4	CENTERLINE FIELD TIES/LAYOUT SHEET
C5	EROSION CONTROL PHASES 1-3



LOCATION



DEPARTMENT OF PUBLIC WORKS
CIVIL ENGINEERING
701 WEST MARKHAM STREET
LITTLE ROCK, ARKANSAS 72201



REVISIONS	DATE

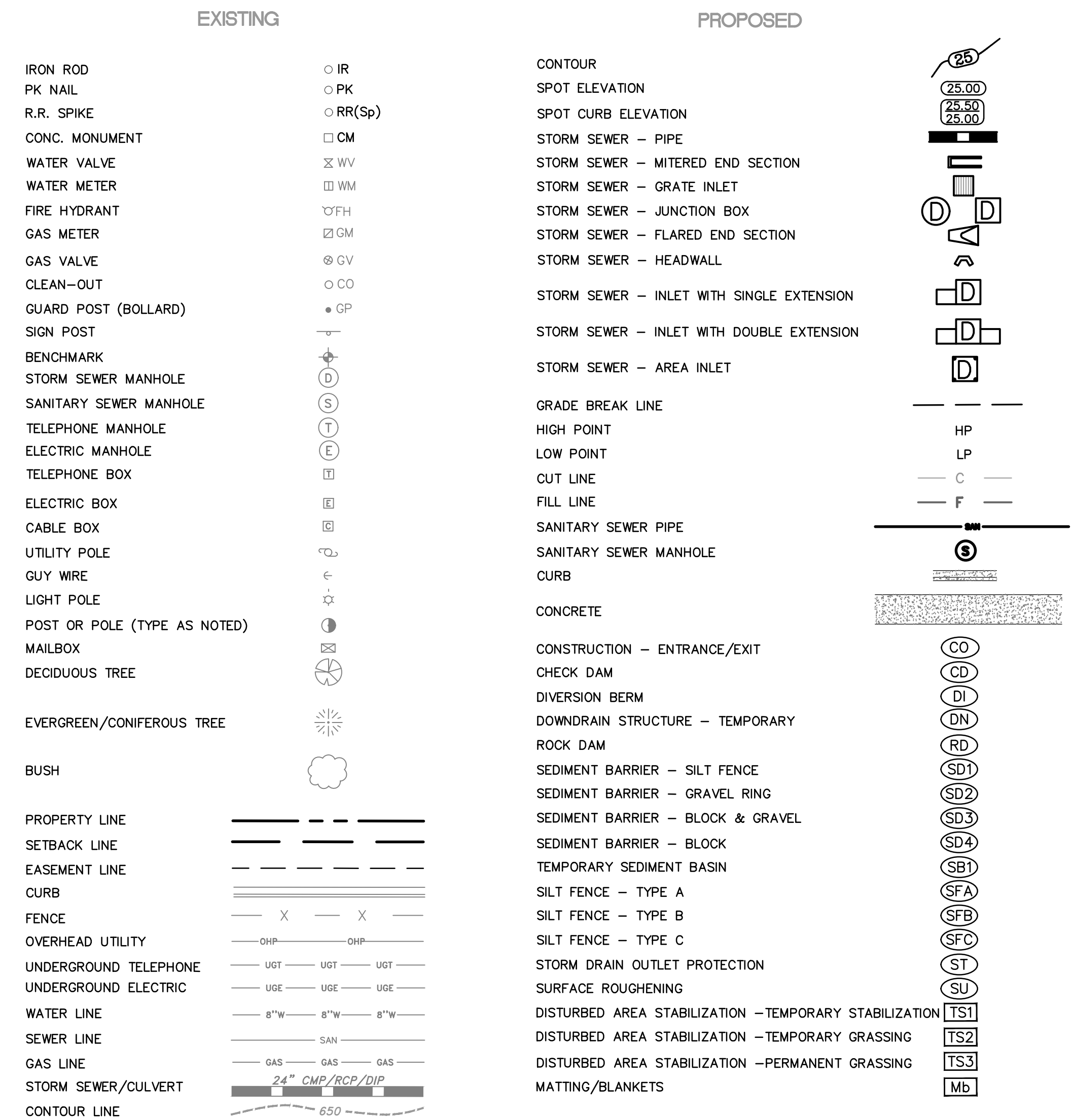
CITY OF LITTLE ROCK, ARKANSAS
CLAYBROOK ROAD DRAINAGE
COVER SHEET

DEPARTMENT OF PUBLIC WORKS
CIVIL ENGINEERING
701 W. MARKHAM
LITTLE ROCK, ARKANSAS 72201



DRAWN BY	JHD
DESIGNED	JHD/BJB
CHECKED	BJB
DATE	05/15/2019
SCALE	N.T.S.
PROJECT NO.	07-16-DR-274
SHEET NO.	C1

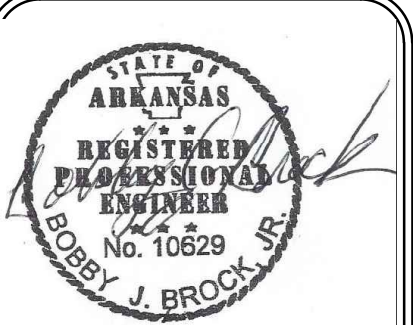
CLR PROJECT# 07-16-DR-274			
CLAYBROOK DRAINAGE			
April 2, 2019			
ITEM #	ITEM DESCRIPTION	UNIT	QUANTITY
2.01	Site Preparation	L.S.	1
4.01	Aggregate Base Course	TON	30
6.01	ACHM Surface Course	TON	2
7.06	Concrete Driveway (6" Thick), Standard Finish	S.F.	326
9.04	Concrete Sidewalk (4" Thick)	S.F.	38
10.04	Curb Inlet - 4' Box	E.A.	3
10.07	Wing 3' Extension	E.A.	3
13.01	6" Underdrain (PW-19)	L.F.	273
13.18P	Storm Drain Pipe, 18" HDPE, Cross-Drain	L.F.	28
13.18P	Storm Drain Pipe, 18" HDPE, Side-Drain	L.F.	157
13.61	Tie Into Existing Curb Inlet	E.A.	2
14.01	Solid Sodding, Bermuda	S.Y.	160
19.01	Final Cleanup	L.S.	1
22.10	Mailbox Relocation	E.A.	3
24.09	Sediment Barrier, Block (SD4)	E.A.	4



REVISIONS DATE

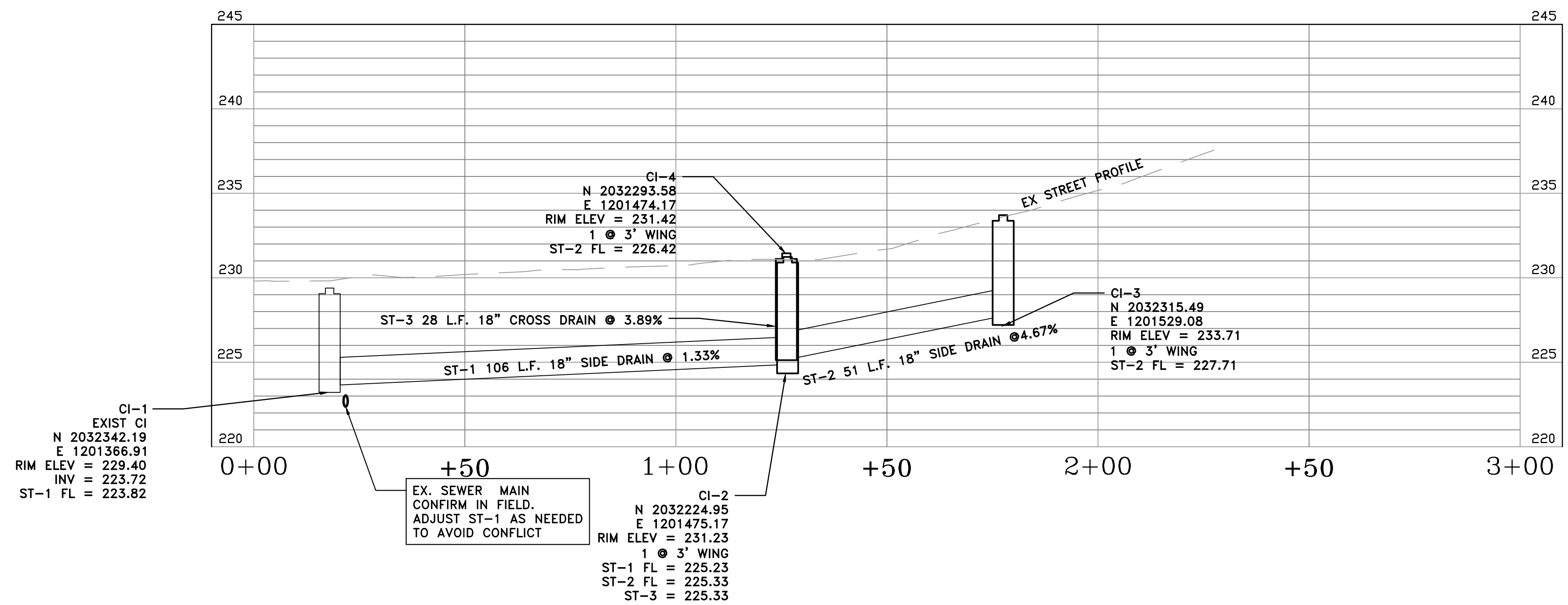
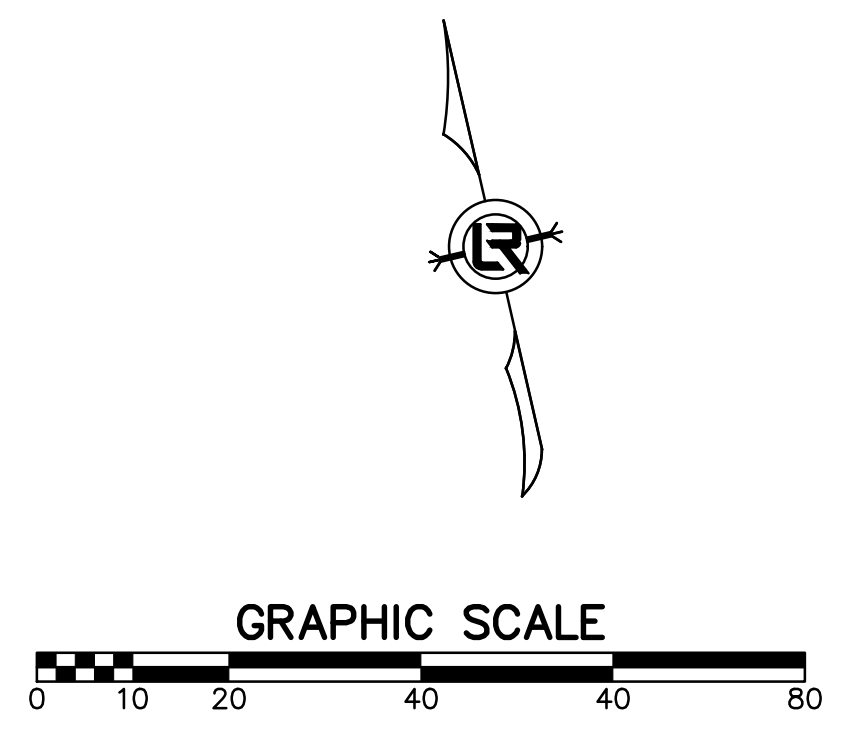
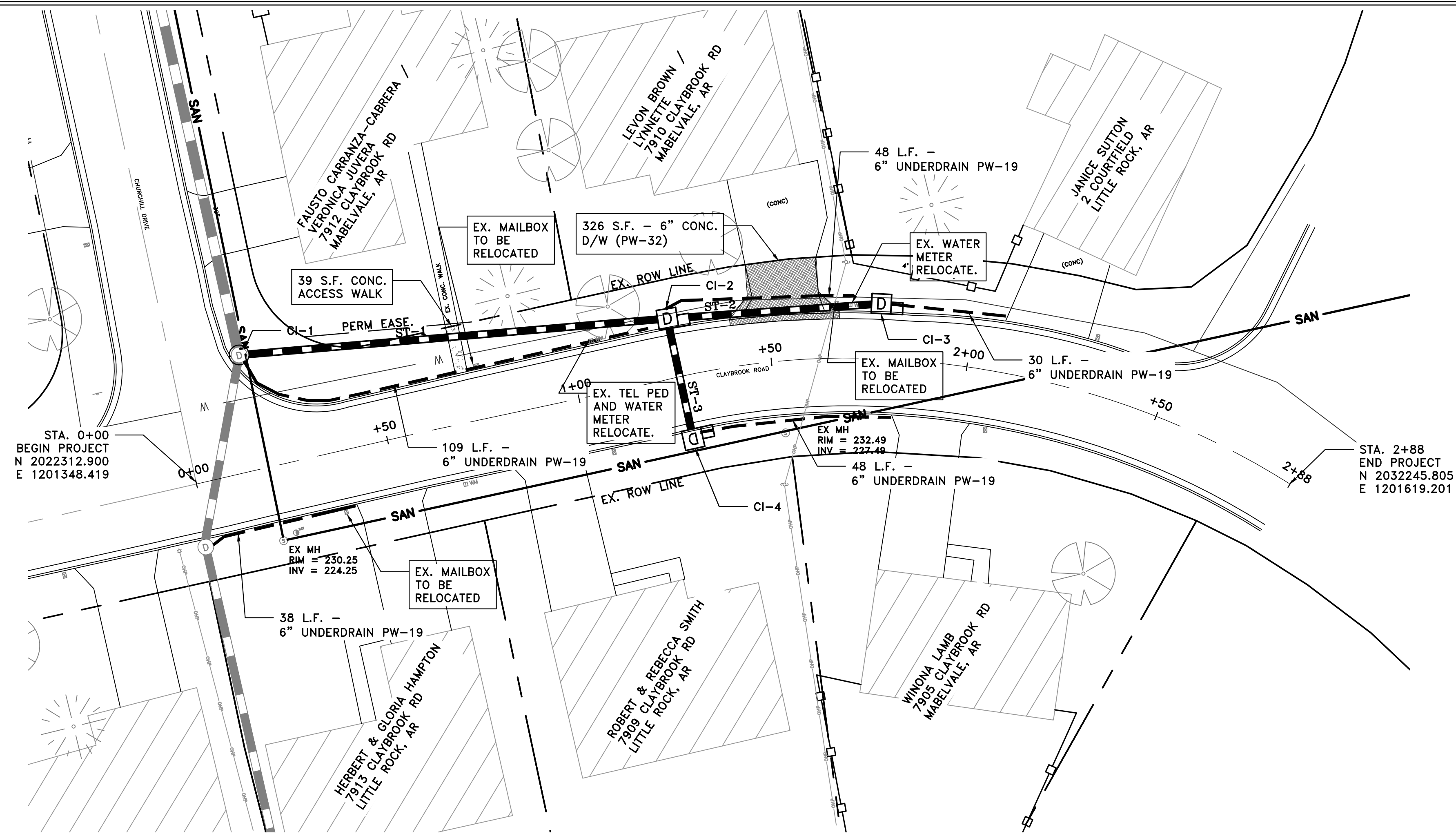
CITY OF LITTLE ROCK, ARKANSAS
CLAYBROOK ROAD DRAINAGE
GENERAL NOTES OVERSEER AND QUANTITIES

DEPARTMENT OF PUBLIC WORKS
CIVIL ENGINEERING
701 W. MARKHAM
LITTLE ROCK, ARKANSAS 72201



DRAWN BY
JHD
DESIGNED
JHD/BJB
CHECKED
BJB
DATE
05/15/2019
SCALE
N.T.S.

PROJECT NO.
07-16-DR-274
SHEET NO.
C2



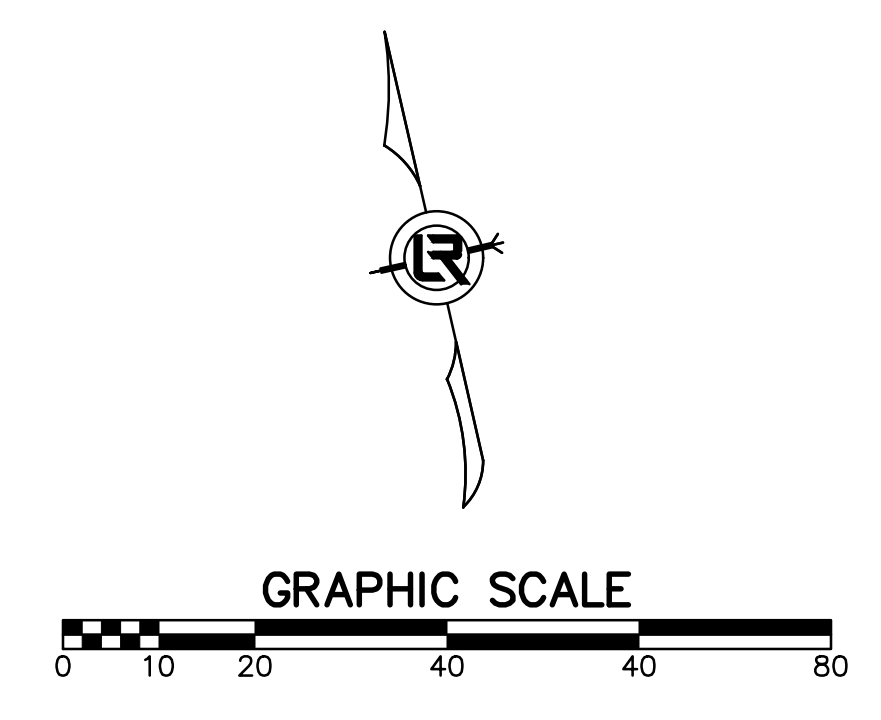
REVISIONS	DATE

CITY OF LITTLE ROCK, ARKANSAS
 CLAYBROOK ROAD DRAINAGE
 PLAN AND PROFILE SHEET

DEPARTMENT OF PUBLIC WORKS
 CIVIL ENGINEERING
 701 W. MARKHAM
 LITTLE ROCK, ARKANSAS 72201



DRAWN BY
 JHD
 DESIGNED
 JHD/BJB
 CHECKED
 BJB
 DATE
 05/15/2019
 SCALE
 1"=20'
 PROJECT NO.
 07-16-DR-274
 SHEET NO.
 C3



NOTE: ALL POINTS ARE SET PK NAILS

CENTERLINE TIES		
POINT NUMBER	NORTHING	EASTING
1	2032326	1201363
2	2032303	1201364
2	2032303	1201348
4	2032238	1201611
5	2032245	1201644
6	2032273	1201618

REVISIONS	DATE

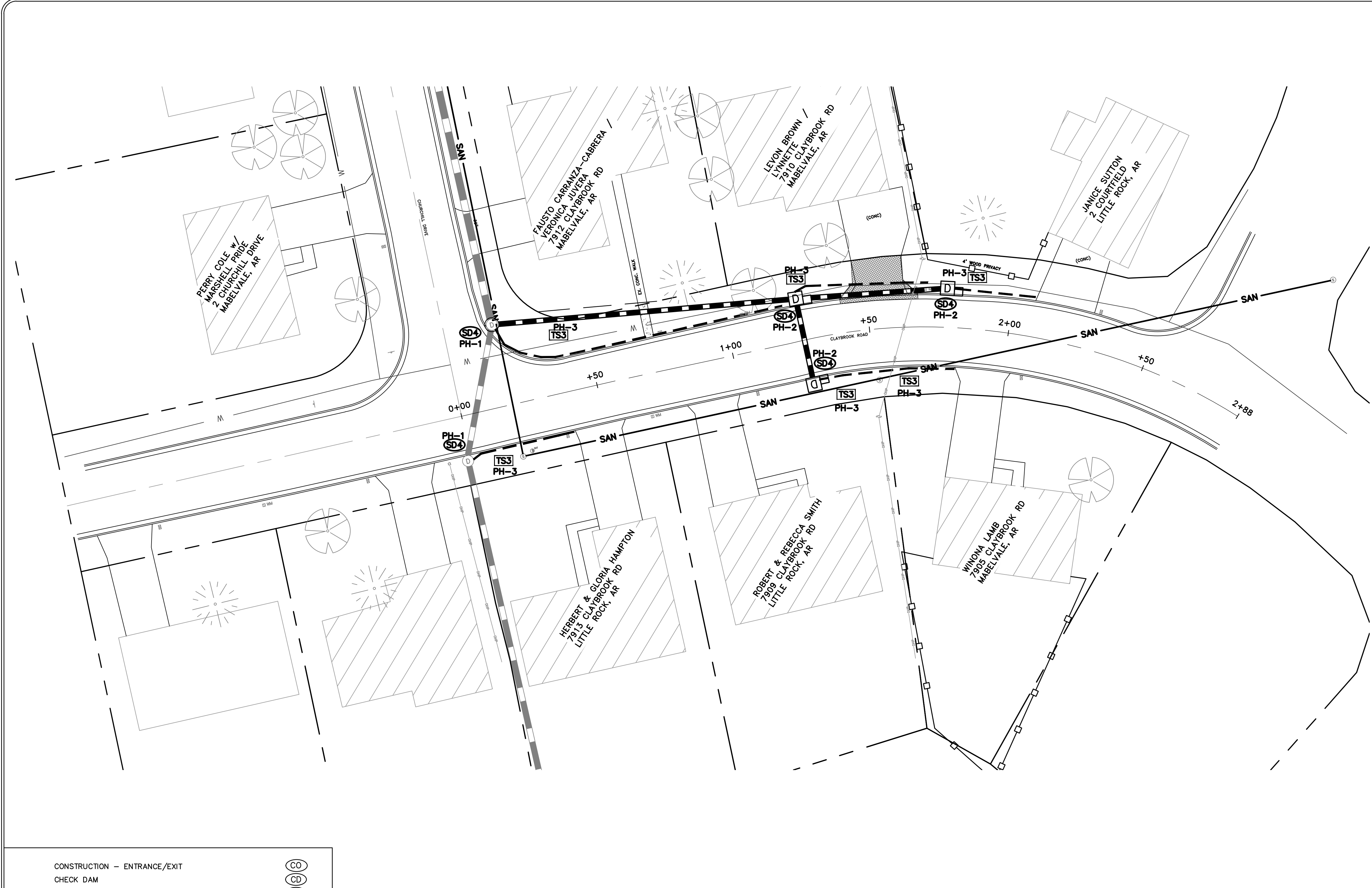
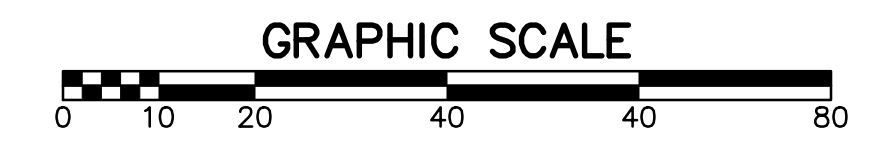
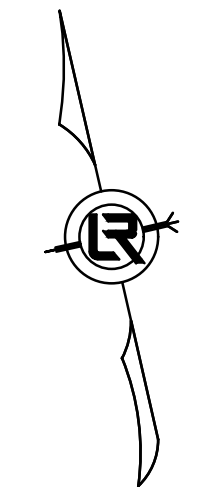
CITY OF LITTLE ROCK, ARKANSAS
 CLAYBROOK ROAD DRAINAGE
 CENTERLINE FIELD TIES/LAYOUT SHEET

DEPARTMENT OF PUBLIC WORKS
 CIVIL ENGINEERING
 701 W. MARKHAM
 LITTLE ROCK, ARKANSAS 72201



DRAWN BY
 JHD
 DESIGNED
 JHD/BJB
 CHECKED
 BJB
 DATE
 05/15/2019
 SCALE
 1"=20'
 PROJECT NO.
 07-16-DR-274
 SHEET NO.
 C4

REVISIONS	DATE



CITY OF LITTLE ROCK, ARKANSAS
 CLAYBROOK ROAD DRAINAGE
 EROSION CONTROL PHASES 1-3

DEPARTMENT OF PUBLIC WORKS
 CIVIL ENGINEERING
 701 W. MARKHAM
 LITTLE ROCK, ARKANSAS 72201



DRAWN BY
 JHD
 DESIGNED
 JHD/BJB
 CHECKED
 BJB
 DATE
 05/15/2019
 SCALE
 1"=20'
 PROJECT NO.
 07-16-DR-274
 SHEET NO.
 C5

CONSTRUCTION EROSION CONTROL BEST MANAGEMENT PRACTISES

UPON IMPLEMENTATION AND INSTALLATION OF THE FOLLOWING AREAS (IF APPLICABLE): TRAILERS, PARKING, LAY DOWN, PORTA POTTY, WHEEL WASH, CONCRETE WASHOUT, FUEL AND MATERIAL STORAGE CONTAINERS, SOLID WASTE CONTAINERS, ETC. IMMEDIATELY DENOTE THEM ON THE SITE MAPS AND NOTE ANY CHANGES IN LOCATION AS THEY OCCUR THROUGHOUT THE CONSTRUCTION PROCESS. IN ADDITION, NOTE ANY OFF-SITE AREA WHERE FILL IS IMPORTED FROM OR SOIL IS EXPORTED TO ON THE SITE MAPS.

- CONSTRUCTION - ENTRANCE/EXIT (CO)
- CHECK DAM (CD)
- DIVERSION BERM (DI)
- DOWNDRAIN STRUCTURE - TEMPORARY (DN)
- ROCK DAM (RD)
- SEDIMENT BARRIER - SILT FENCE (SD1)
- SEDIMENT BARRIER - GRAVEL RING (SD2)
- SEDIMENT BARRIER - BLOCK & GRAVEL (SD3)
- SEDIMENT BARRIER - BLOCK (SD4)
- TEMPORARY SEDIMENT BASIN (SB1)
- SILT FENCE - TYPE A (SFA)
- SILT FENCE - TYPE B (SFB)
- SILT FENCE - TYPE C (SFC)
- STORM DRAIN OUTLET PROTECTION (ST)
- SURFACE ROUGHENING (SU)
- DISTURBED AREA STABILIZATION - TEMPORARY STABILIZATION (TS1)
- DISTURBED AREA STABILIZATION - TEMPORARY GRASSING (TS2)
- DISTURBED AREA STABILIZATION - PERMANENT GRASSING (TS3)
- MATting/BLANKETS (Mb)

- PHASE 1**
- INSTALL APPROPRIATE INLET PROTECTION DEVICES FOR PAVED AREAS BEFORE WORK BEGINS.
 - CONTACT THE CITY OF LITTLE ROCK TO PERFORM INSPECTION AND ACCEPTANCE OF BMP'S.
- PHASE 2**
- INSTALL UNDERDRAINS, STORM DRAINS & INLETS.
 - REPAIR STREET CROSSINGS AND PAVING.
 - INSTALL NEW DRIVEWAYS APRONS.
 - INSTALL, ADJUST AND MAINTAIN INLET PROTECTION DEVICES AS NEEDED.
- PHASE 3**
- FINISH GRADE ALL DISTURBED AREAS.
 - INSTALL PERMANENT STABILIZATION OVER ALL NON-PAVED AREAS.
 - ADJUST AND MAINTAIN INLET PROTECTION DEVICES AS NEEDED.