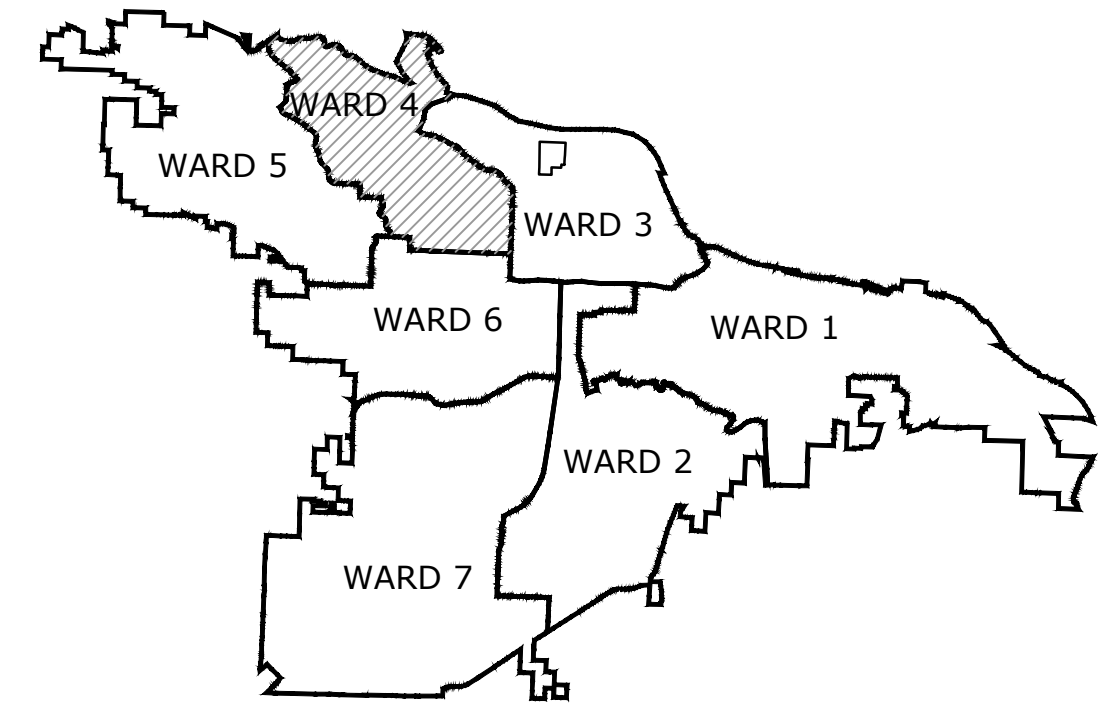


JOB #04-17-SW-194

PLEASANT VALLEY DRIVE

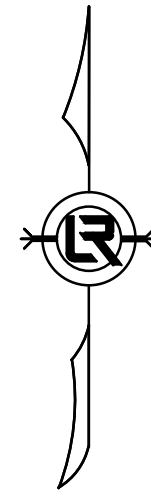
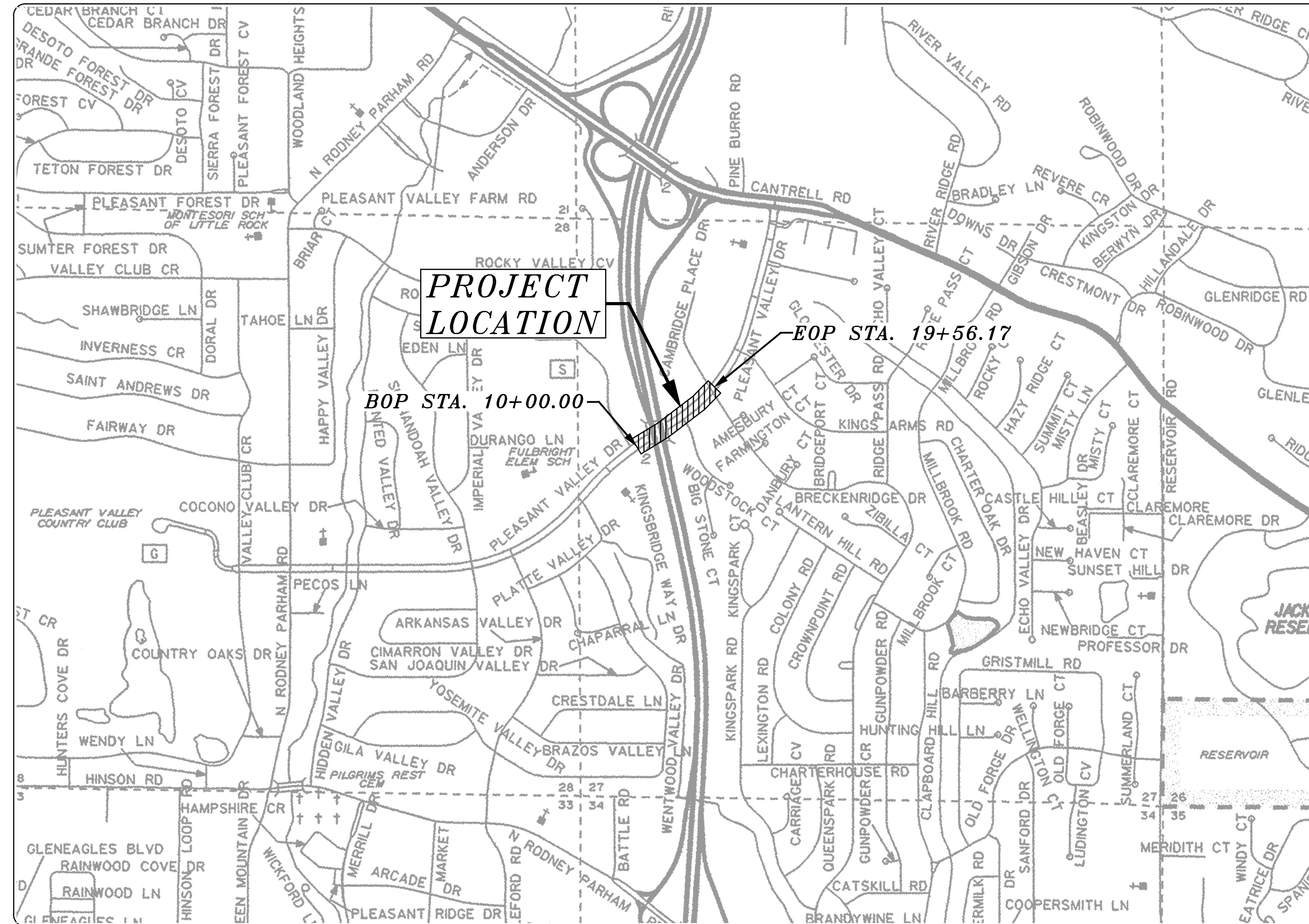
SIDEWALK

LITTLE ROCK, ARKANSAS



PROJECT LOCATION - WARD 4

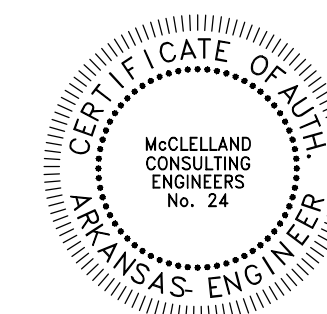
SHEET NO.	TITLE
C1	COVER SHEET
C2	LEGEND AND QUANTITIES
C3	TOPOGRAPHIC SURVEY
C4	SIDEWALK LAYOUT



DEPARTMENT OF PUBLIC WORKS
 CIVIL ENGINEERING
 701 WEST MARKHAM STREET
 LITTLE ROCK, ARKANSAS 72201



Know what's below.
 Call before you dig.

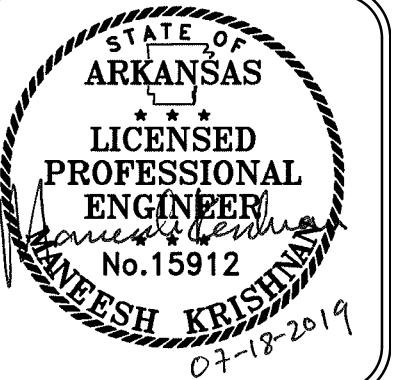
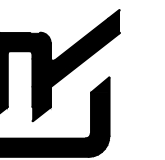


REVISIONS	DATE

CITY OF LITTLE ROCK, ARKANSAS
 PLEASANT VALLEY DRIVE SIDEWALK

COVER SHEET

DEPARTMENT OF PUBLIC WORKS
 CIVIL ENGINEERING
 701 W. MARKHAM
 LITTLE ROCK, ARKANSAS 72201

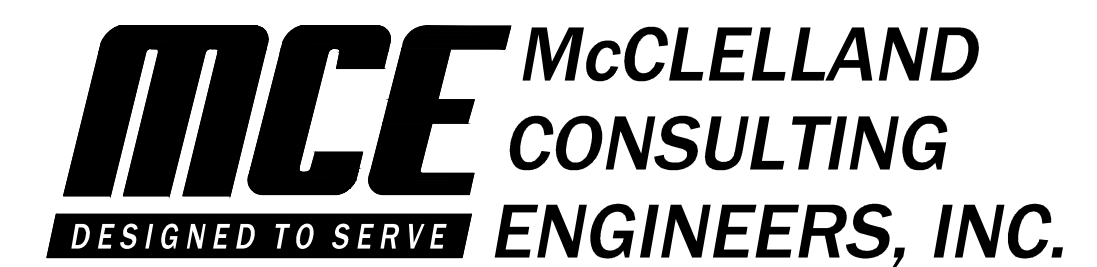


ORIGINAL SIGNATURE ON FILE

DRAWN BY
 JAM
 DESIGNED
 JJW
 CHECKED
 MK
 DATE
 07/18/19
 SCALE
 NTS

PROJECT NO.
 04-17-SW-194

SHEET NO.
C1



1810 N. College Fayetteville, AR 72702 PH# 479-443-2377
 7302 Kanis Rd. Little Rock, AR 72204 PH# 501-371-0272
 4606 S. Garnett Rd. Ste. 401 Tulsa, OK 74146 PH# 918-619-6803

<http://www.mce.us.com>

REVISIONS	DATE

CITY OF LITTLE ROCK, ARKANSAS
 PLEASANT VALLEY DRIVE SIDEWALK
 LEGEND AND QUANTITIES

DEPARTMENT OF PUBLIC WORKS
 CIVIL ENGINEERING
 701 W. MARKHAM
 LITTLE ROCK, ARKANSAS 72201



DRAWN BY
 JAM
DESIGNED
 JJW
CHECKED
 MK
DATE
 07/18/19
SCALE
 NTS
PROJECT NO.
 04-17-SW-194
SHEET NO.
 C2

LEGEND

EXISTING

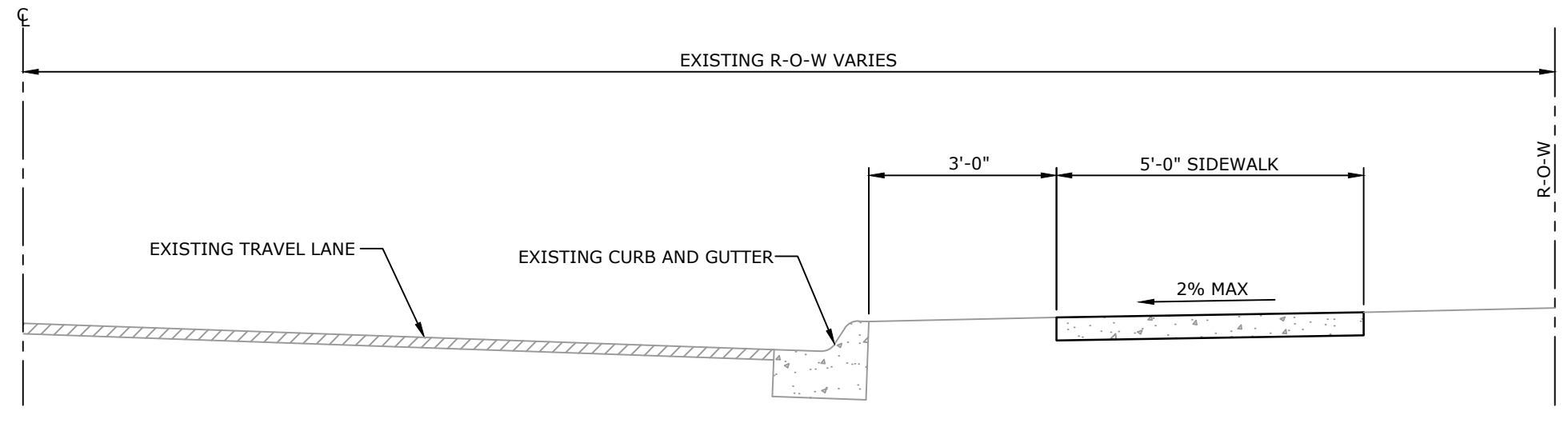
- IR IRON ROD
- PK PK NAIL
- RR(Sp) R.R. SPIKE
- CM CONC. MONUMENT
- ⊗ WV WATER VALVE
- ⊗ WM WATER METER
- ⊗ FH FIRE HYDRANT
- ⊗ GM GAS METER
- ⊗ GV GAS VALVE
- CO CLEAN-OUT
- GP GUARD POST (BOLLARD)
- ⊕ SIGN POST
- ⊕ BENCHMARK
- ⊕ D STORM SEWER MANHOLE
- ⊕ S SANITARY SEWER MANHOLE
- ⊕ T TELEPHONE MANHOLE
- ⊕ E ELECTRIC MANHOLE
- ⊕ TELEPHONE BOX
- ⊕ ELECTRIC BOX
- ⊕ CABLE BOX
- ⊕ UTILITY POLE
- ⊕ GUY WIRE
- ⊕ LIGHT POLE
- ⊕ POST OR POLE (TYPE AS NOTED)
- ⊕ MAILBOX
- ⊕ DECIDUOUS TREE
- ⊕ EVERGREEN/CONIFEROUS TREE
- ⊕ BUSH
- PROPERTY LINE
- SETBACK LINE
- EASEMENT LINE
- CURB
- X-X-X- FENCE
- OE-OE- OVERHEAD ELECTRIC
- OT-OT- OVERHEAD TELEPHONE
- OC-OC- OVERHEAD CABLE
- UGT- UNDERGROUND TELEPHONE
- UGE- UNDERGROUND ELECTRIC
- UGC- UNDERGROUND CABLE
- 8"W- WATER LINE
- 8"SS- SEWER LINE
- 4"G- GAS LINE
- 24" CMP/RCP/DIP- STORM SEWER/CULVERT
- 650- EDGE OF WOODS
- --- CONTOUR LINE

PROPOSED

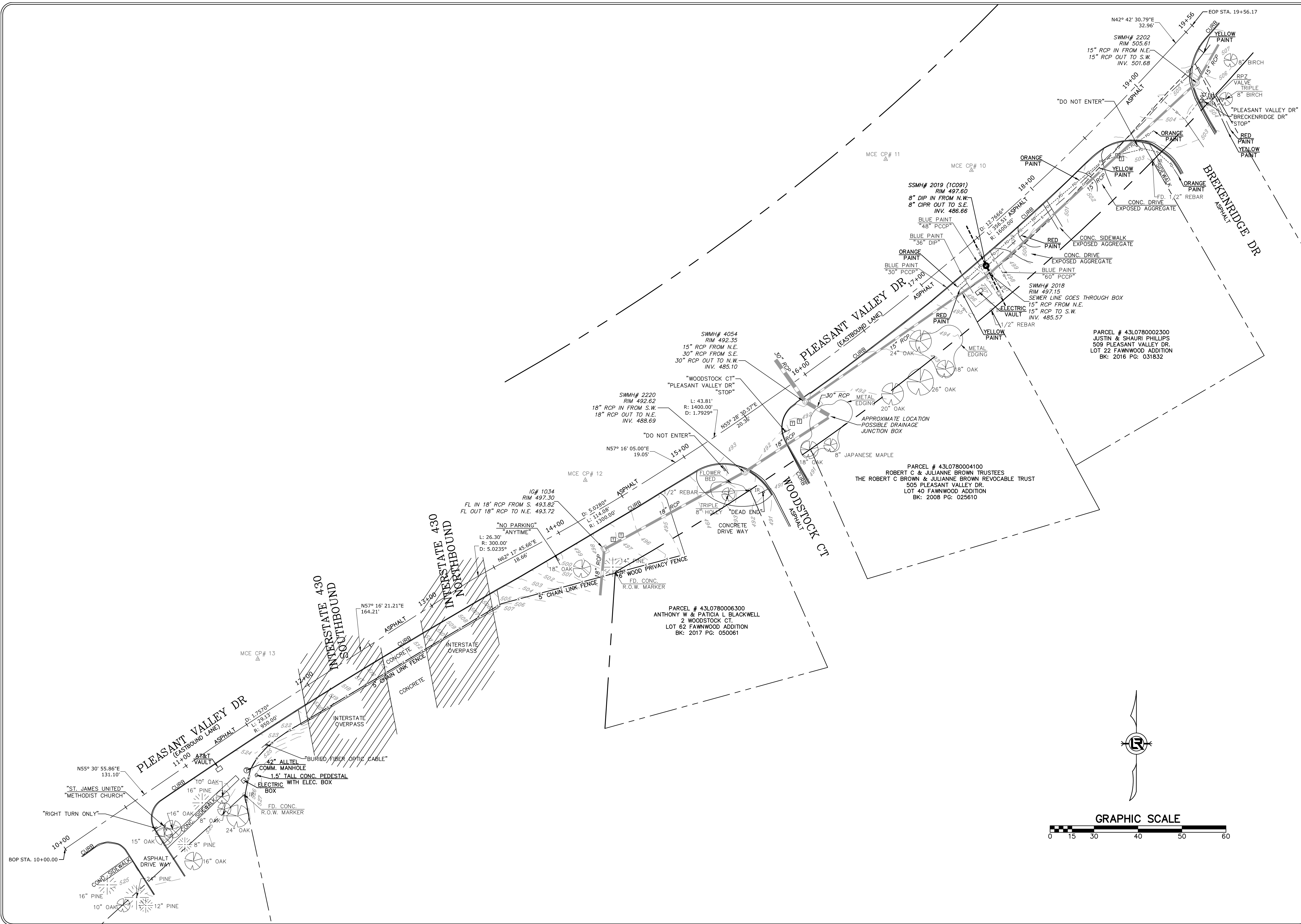
- 25.00 PROPOSED CONTOUR
- 25.50 PROPOSED SPOT ELEVATION
- 28.00 PROPOSED SPOT CURB ELEVATION
- STORM SEWER - PIPE
- STORM SEWER - MITERED END SECTION
- STORM SEWER - GRATE INLET
- ⊕ D STORM SEWER - JUNCTION BOX
- ⊕ STORM SEWER - FLARED END SECTION
- ⊕ STORM SEWER - HEADWALL
- ⊕ D STORM SEWER - SINGLE WING
- ⊕ D STORM SEWER - DOUBLE WING
- ⊕ D STORM SEWER - AREA INLET
- GRADE BREAK LINE
- HP HIGH POINT
- LP LOW POINT
- C- CUT LINE
- F- FILL LINE
- SS- SANITARY SEWER PIPE
- ⊕ S SANITARY SEWER MANHOLE
- PROPOSED CURB
- PROPOSED CONCRETE
- PROPOSED ASPHALT
- PROPOSED RIP-RAP
- ⊕ CO CONSTRUCTION - ENTRANCE/EXIT
- ⊕ CD CHECK DAM
- ⊕ DI DIVERSION BERM
- ⊕ DN DOWNDRAIN STRUCTURE - TEMPORARY
- ⊕ RD ROCK DAM
- ⊕ SD1 SEDIMENT BARRIER - SILT FENCE
- ⊕ SD2 SEDIMENT BARRIER - GRAVEL RING
- ⊕ SD3 SEDIMENT BARRIER - BLOCK & GRAVEL
- ⊕ SD4 SEDIMENT BARRIER - BLOCK
- ⊕ SB1 TEMPORARY SEDIMENT BASIN
- ⊕ SFA SILT FENCE - TYPE A
- ⊕ SFB SILT FENCE - TYPE B
- ⊕ SFC SILT FENCE - TYPE C
- ⊕ ST STORM DRAIN OUTLET PROTECTION
- ⊕ SU SURFACE ROUGHENING
- ⊕ TS1 DISTURBED AREA STABILIZATION - TEMPORARY STABILIZATION
- ⊕ TS2 DISTURBED AREA STABILIZATION - TEMPORARY GRASSING
- ⊕ TS3 DISTURBED AREA STABILIZATION - PERMANENT GRASSING
- ⊕ Mb MATTING/BLANKETS

QUANTITIES

CLR Item No.	Description	Unit	Estimated Quantity
2.01	Site Preparation	LUMP SUM	1
3.40	Top Soil	CU. YD.	35
7.06	Concrete Driveway (6" Thick)	SQ. FT.	460
7.07	Concrete Driveway (6" Thick) Exposed Aggregate	SQ. FT.	75
8.02	Concrete Curb	LIN. FT.	35
9.04	Concrete Sidewalk (4" Thick)	SQ. FT.	7135
14.01	Solid Sodding, Bermuda	SQ. YD.	300
16.01	Maintenance of Traffic	LUMP SUM	1
18.50	Access Ramp	SQ. FT.	125
19.01	Final Clean-Up	LUMP SUM	1
24.11	Silt Fence - Type A (SFA)	LIN. FT.	1000
24.14	Storm Drain Inlet Protection	EACH	3
SP1	Remove and Reinstalling Signs	EACH	6



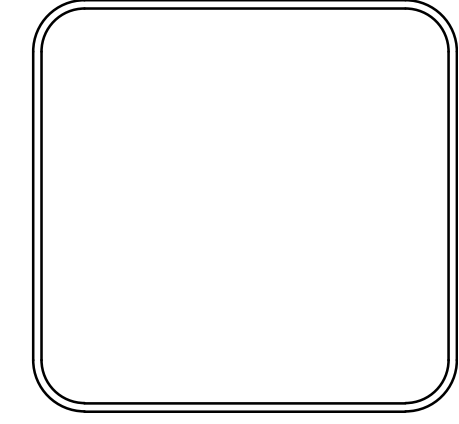
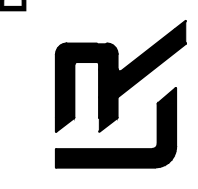
TYPICAL SECTION OF IMPROVEMENT
N.T.S.



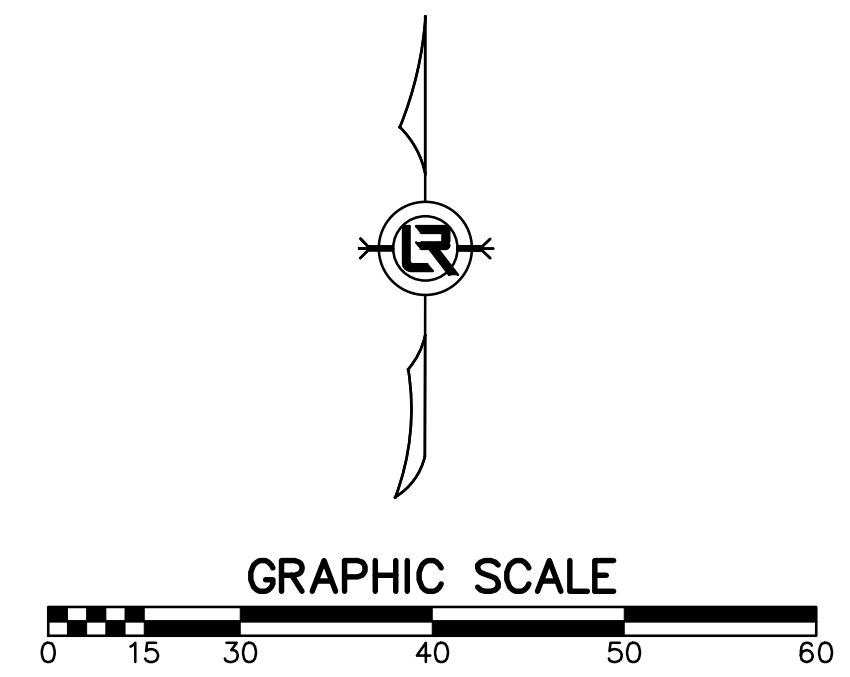
REVISIONS	DATE

CITY OF LITTLE ROCK, ARKANSAS
PLEASANT VALLEY DRIVE SIDEWALK
TOPOGRAPHIC SURVEY

DEPARTMENT OF PUBLIC WORKS
CIVIL ENGINEERING
701 W. MARKHAM
LITTLE ROCK, ARKANSAS 72201



DRAWN BY
JDM
DESIGNED
N/A
CHECKED
KLS
DATE
01/03/2019
SCALE
1" = 30'
PROJECT NO.
18-5820
SHEET NO.
C3

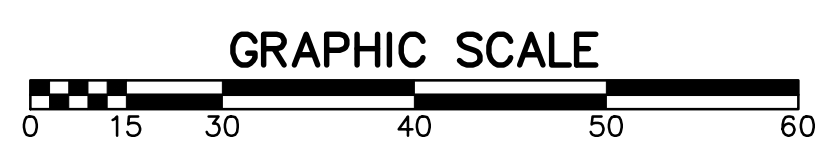
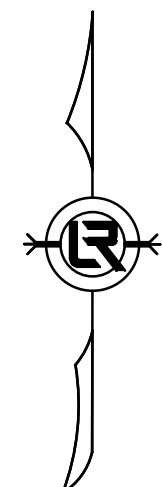
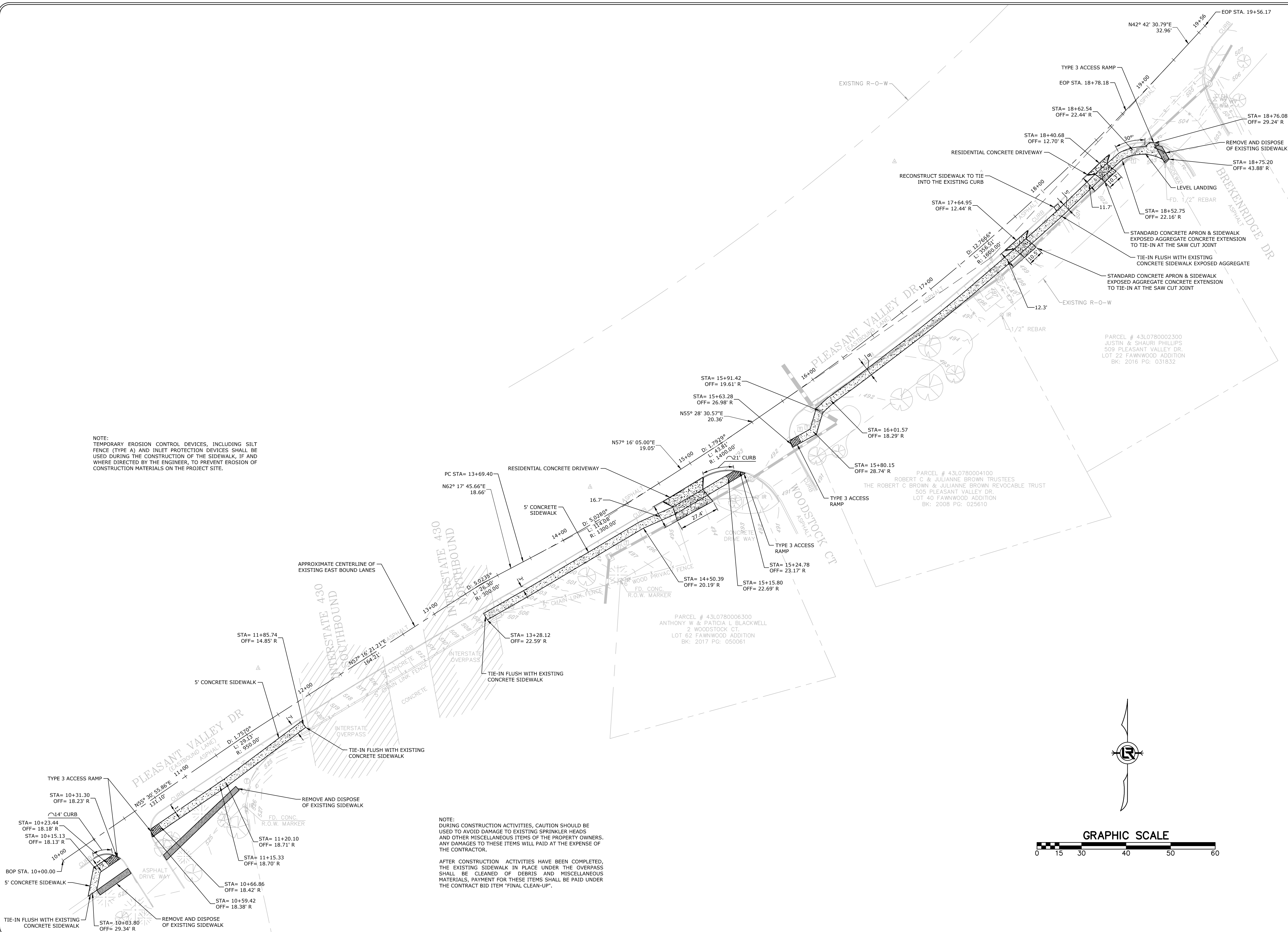


W:\2018\18-5820 City of Little Rock Pleasant Valley Dr. Sidewalk\Design Drawings\18-5820-DESIGN.dwg 7/18/19 at 1:50pm

NOTE:
TEMPORARY EROSION CONTROL DEVICES, INCLUDING SILT FENCE (TYPE A) AND INLET PROTECTION DEVICES SHALL BE USED DURING THE CONSTRUCTION OF THE SIDEWALK, IF AND WHERE DIRECTED BY THE ENGINEER, TO PREVENT EROSION OF CONSTRUCTION MATERIALS ON THE PROJECT SITE.

NOTE:
DURING CONSTRUCTION ACTIVITIES, CAUTION SHOULD BE USED TO AVOID DAMAGE TO EXISTING SPRINKLER HEADS AND OTHER MISCELLANEOUS ITEMS OF THE PROPERTY OWNERS. ANY DAMAGES TO THESE ITEMS WILL PAID AT THE EXPENSE OF THE CONTRACTOR.

AFTER CONSTRUCTION ACTIVITIES HAVE BEEN COMPLETED, THE EXISTING SIDEWALK IN PLACE UNDER THE OVERPASS SHALL BE CLEANED OF DEBRIS AND MISCELLANEOUS MATERIALS, PAYMENT FOR THESE ITEMS SHALL BE PAID UNDER THE CONTRACT BID ITEM "FINAL CLEAN-UP".



REVISIONS	DATE

CITY OF LITTLE ROCK, ARKANSAS
PLEASANT VALLEY DRIVE SIDEWALK
SIDEWALK LAYOUT

DEPARTMENT OF PUBLIC WORKS
CIVIL ENGINEERING
701 W. MARKHAM
LITTLE ROCK, ARKANSAS 72201



DRAWN BY
JJW
DESIGNED
JJW
CHECKED
MK
DATE
07/18/2019
SCALE
1" = 30'
PROJECT NO.
04-17-SW-194
SHEET NO.
C4