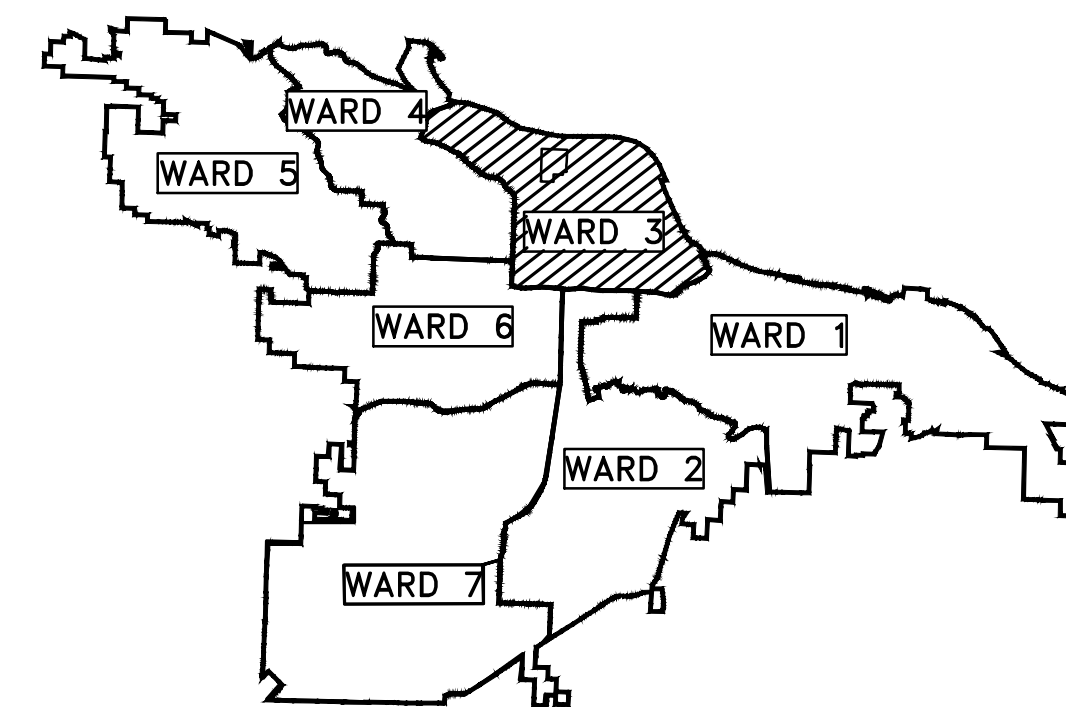
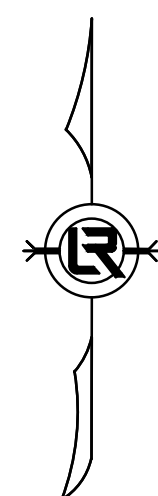


# CLR PROJECT 03-17-SW-355 NORTH LOOKOUT ROAD SIDEWALK REPLACEMENT LITTLE ROCK, ARKANSAS



PROJECT LOCATION – WARD 3



SHEET NO.	TITLE
C1	COVER SHEET
C2	GENERAL NOTES, LEGEND AND QUANTITIES
C3	PROPOSED LAYOUT SECTION A: BOC TO EOC SECTION B: BOC TO 11+65.00
C4	PROPOSED LAYOUT SECTION B: 11+65.00 TO EOC
C5	EROSION CONTROL SECTION A: BOC TO EOC SECTION B: BOC TO 11+65.00
C6	EROSION CONTROL SECTION B: 11+65.00 TO EOC



**2019-2021  
BOND PROGRAM**

DEPARTMENT OF PUBLIC WORKS  
CIVIL ENGINEERING  
701 WEST MARKHAM STREET  
LITTLE ROCK, ARKANSAS 72201



**HR** 320 Executive Court  
Suite 304  
Little Rock, AR 72205  
501.907.7153

REVISIONS	DATE

CITY OF LITTLE ROCK, ARKANSAS  
N. LOOKOUT RD. SIDEWALK REPLACEMENT

COVER SHEET

DEPARTMENT OF PUBLIC WORKS  
CIVIL ENGINEERING  
701 W. MARKHAM  
LITTLE ROCK, ARKANSAS 72201



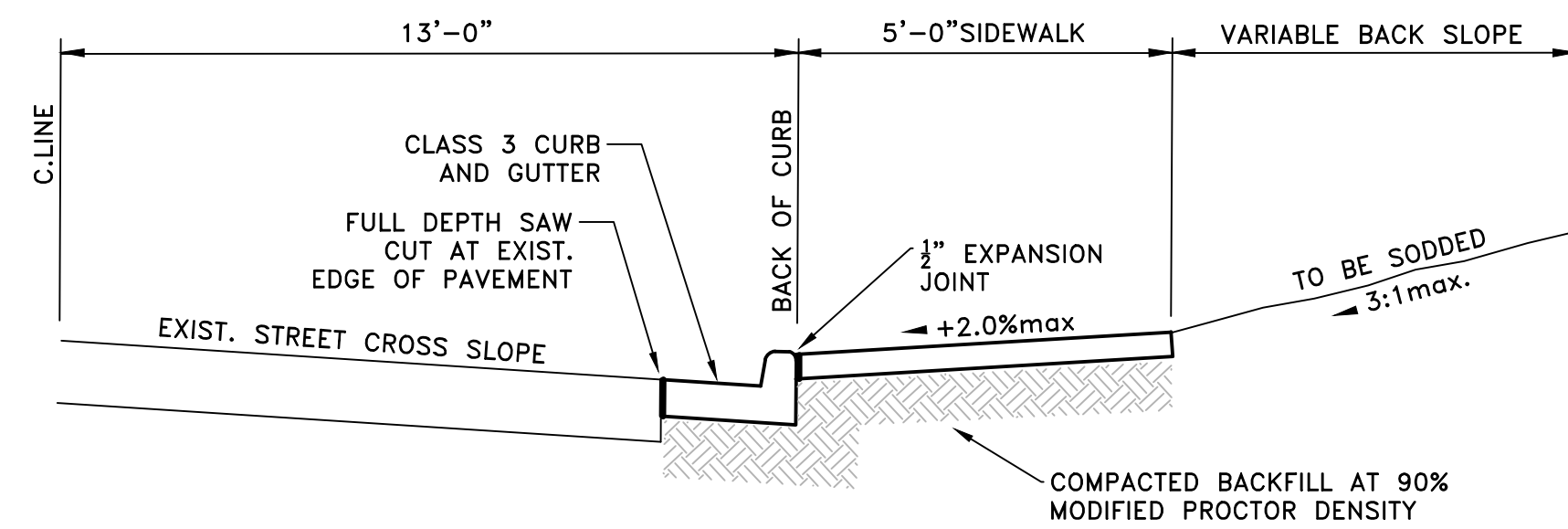
DRAWN BY

DESIGNED  
JRH  
CHECKED  
JRH  
DATE  
2/18/19  
SCALE  
NTS

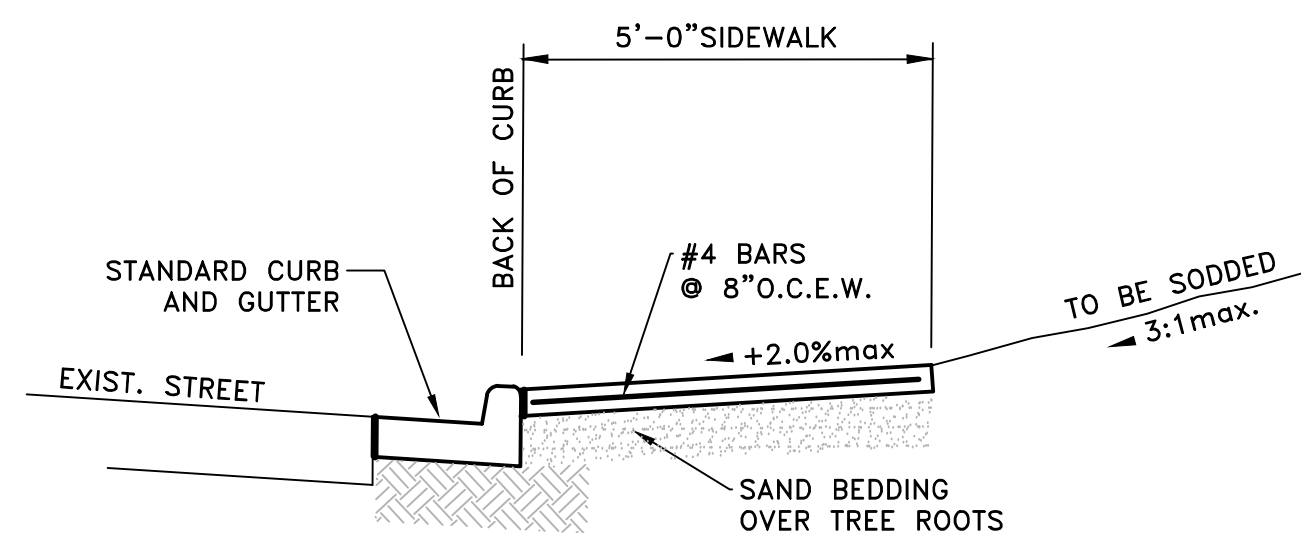
PROJECT NO.  
03-17-SW-355  
SHEET NO.

C1

ITEM #	ITEM DESCRIPTION	UNIT	QUANTITY
2.01	SITE PREPARATION	LS	1
3.01	UNCLASSIFIED EXCAVATION	CY	40
3.06	BORROW MATERIAL	CY	300
7.06	CONCRETE DRIVEWAY (4" THICK), STANDARD FINISH	SF	225
8.03	CONCRETE CURB AND GUTTER (CLASS 3)	LF	1160
9.04	CONCRETE SIDEWALK (4" THICK)	SF	5800
9.40	CONCRETE SIDEWALK "TURN UP" WALL (PW-44)(PW-45)	SF	35
10.07	WING 3' EXTENSION	EA	3
10.80	REBUILD INLET TOP	EA	2
14.01	SOLID SODDING, BERMUDA	SY	500
16.01	MAINTENANCE OF TRAFFIC	LS	1
17.01	PAVEMENT REPAIRS	SY	10
18.01	REMOVE AND REPLACE FENCE (WOOD 3 RAIL FENCE)	LF	10
18.50	ACCESS RAMP	SF	190
19.10	CLEANUP	LS	1
24.11	SILT FENCE	LF	120
24.22A	STRAW WADDLES (SD-2)	EA	6



**PROP. SIDEWALK TYPICAL**



**PROP. SIDEWALK OVER ROOTS**

**EXISTING**

- IRON ROD ○ IR
- PK NAIL ○ PK
- R.R. SPIKE ○ RR(Sp)
- CONC. MONUMENT □ CM
- WATER VALVE ⊗ WV
- WATER METER □ WM
- FIRE HYDRANT ∇ FH
- GAS METER ⊗ GM
- GAS VALVE ⊗ GV
- CLEAN-OUT ○ CO
- GUARD POST (BOLLARD) ● GP
- SIGN POST ⊕
- BENCHMARK ⊕
- STORM SEWER MANHOLE (D)
- SANITARY SEWER MANHOLE (S)
- TELEPHONE MANHOLE (T)
- ELECTRIC MANHOLE (E)
- TELEPHONE BOX □
- ELECTRIC BOX □
- CABLE BOX □
- UTILITY POLE ⊕
- GUY WIRE ⊕
- LIGHT POLE ⊕
- POST OR POLE (TYPE AS NOTED) ⊕
- MAILBOX □
- DECIDUOUS TREE (tree symbol)
- EVERGREEN/CONIFEROUS TREE (tree symbol)
- BUSH (bush symbol)
- PROPERTY LINE (---X---X---X---)
- SETBACK LINE (---OE---OE---)
- EASEMENT LINE (---OT---OT---)
- CURB (---OC---OC---)
- FENCE (---UGT---)
- OVERHEAD ELECTRIC (---UGE---)
- OVERHEAD TELEPHONE (---UGC---)
- UNDERGROUND TELEPHONE (---8"W---
- UNDERGROUND ELECTRIC (---8"SS---
- UNDERGROUND CABLE (---4"G---
- WATER LINE (---24" CMP/RCP/DIP---
- SEWER LINE (---650---
- GAS LINE (---650---
- STORM SEWER/CULVERT (---650---
- EDGE OF WOODS (---650---
- CONTOUR LINE (---650---

**PROPOSED**

- PROPOSED CONTOUR (25)
- PROPOSED SPOT ELEVATION (25.00)
- PROPOSED SPOT CURB ELEVATION (25.50, 25.00)
- STORM SEWER - PIPE
- STORM SEWER - MITERED END SECTION
- STORM SEWER - GRATE INLET
- STORM SEWER - JUNCTION BOX
- STORM SEWER - FLARED END SECTION
- STORM SEWER - HEADWALL
- STORM SEWER - NO WING
- STORM SEWER - SINGLE WING
- STORM SEWER - DOUBLE WING
- STORM SEWER - AREA INLET
- GRADE BREAK LINE
- HIGH POINT (HP)
- LOW POINT (LP)
- CUT LINE (C)
- FILL LINE (F)
- SANITARY SEWER PIPE (SAN)
- SANITARY SEWER MANHOLE (S)
- PROPOSED CURB
- PROPOSED CONCRETE
- CONSTRUCTION - ENTRANCE/EXIT (CO)
- CHECK DAM (CD)
- DIVERSION BERM (DI)
- DOWNDRAIN STRUCTURE - TEMPORARY (DN)
- ROCK DAM (RD)
- SEDIMENT BARRIER - SILT FENCE (SD1)
- SEDIMENT BARRIER - GRAVEL RING (SD2)
- SEDIMENT BARRIER - BLOCK & GRAVEL (SD3)
- SEDIMENT BARRIER - BLOCK (SD4)
- TEMPORARY SEDIMENT BASIN (SB1)
- SILT FENCE - TYPE A (SFA)
- SILT FENCE - TYPE B (SFB)
- SILT FENCE - TYPE C (SFC)
- STORM DRAIN OUTLET PROTECTION (ST)
- SURFACE ROUGHENING (SU)
- DISTURBED AREA STABILIZATION - TEMPORARY STABILIZATION (TS1)
- DISTURBED AREA STABILIZATION - TEMPORARY GRASSING (TS2)
- DISTURBED AREA STABILIZATION - PERMANENT GRASSING (TS3)
- MATTING/BLANKETS (Mb)

REVISIONS	DATE

**CITY OF LITTLE ROCK, ARKANSAS**  
**N. LOOKOUT RD. SIDEWALK REPLACEMENT**  
**GENERAL NOTES, LEGEND AND QUANTITIES**

**DEPARTMENT OF PUBLIC WORKS**  
**CIVIL ENGINEERING**  
**701 W. MARKHAM**  
**LITTLE ROCK, ARKANSAS 72201**

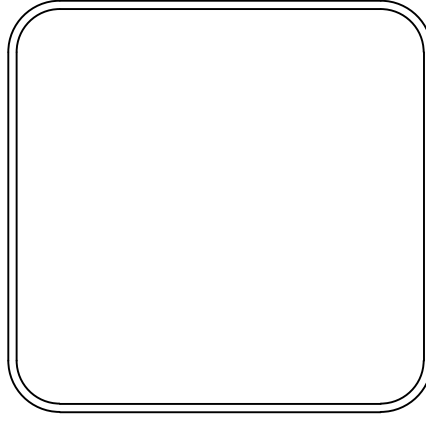


**DRAWN BY**  
**DESIGNED**  
**JRH**  
**CHECKED**  
**JRH**  
**DATE**  
**2/18/19**  
**SCALE**  
**NTS**  
**PROJECT NO.**  
**03-17-SW-355**  
**SHEET NO.**  
**C2**

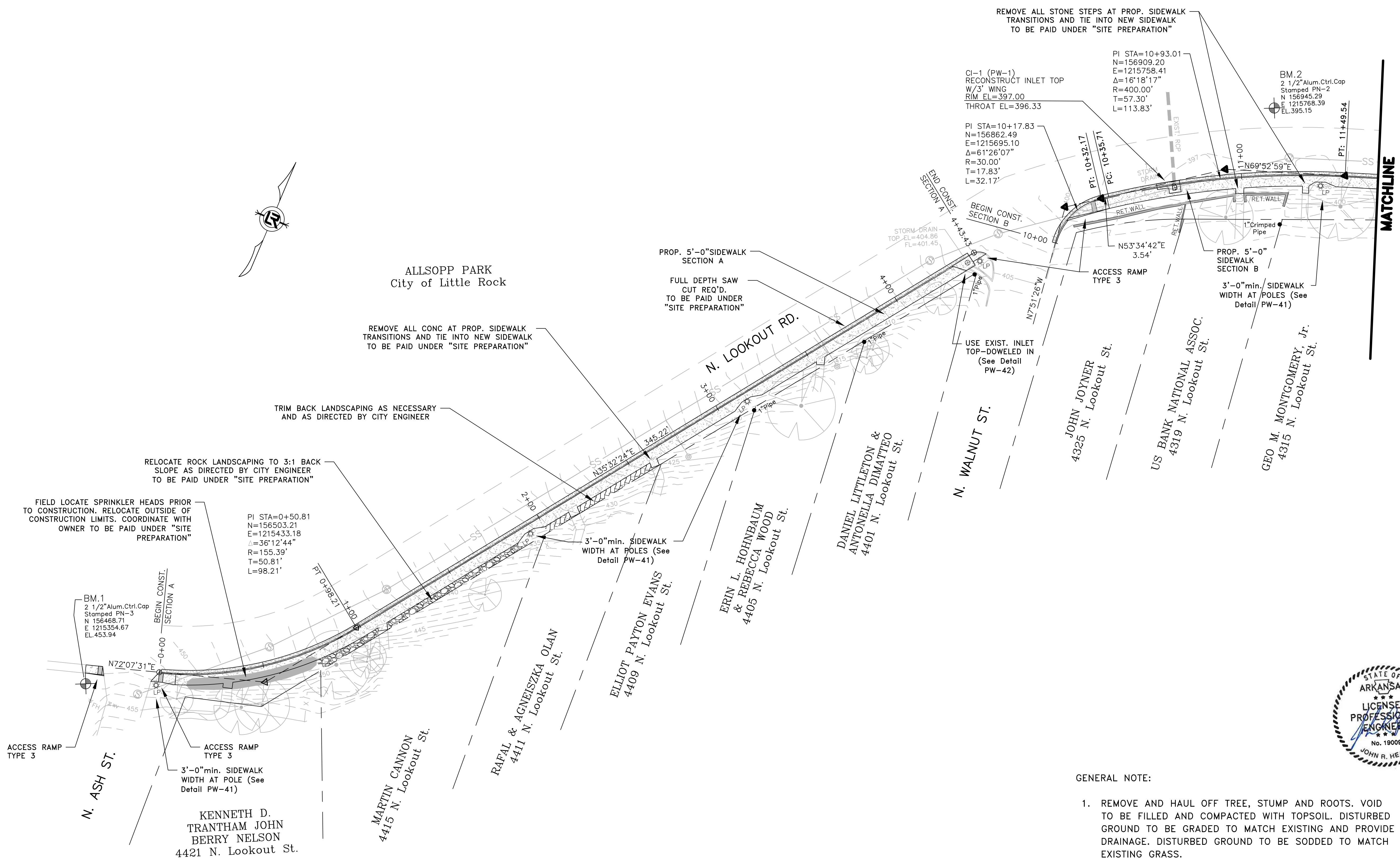
REVISIONS	DATE

CITY OF LITTLE ROCK, ARKANSAS  
**N. LOOKOUT RD. SIDEWALK REPLACEMENT**  
 PROPOSED LAYOUT (60%)

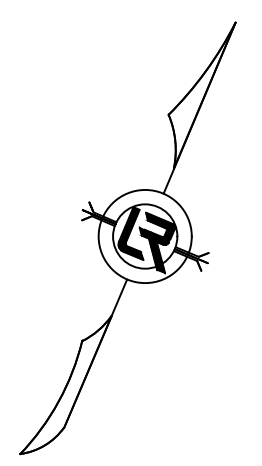
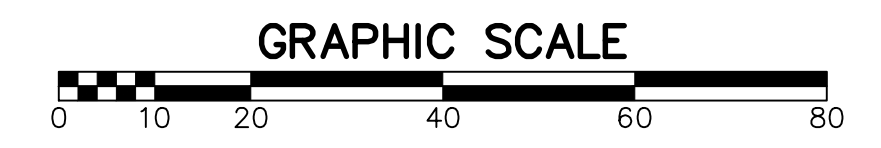
DEPARTMENT OF PUBLIC WORKS  
 CIVIL ENGINEERING  
 701 W. MARKHAM  
 LITTLE ROCK, ARKANSAS 72201



DRAWN BY  
 DESIGNED  
 JRH  
 CHECKED  
 JRH  
 DATE  
 2/18/19  
 SCALE  
 1"=20'  
 PROJECT NO.  
 03-17-SW-355  
 SHEET NO.  
 C3



- GENERAL NOTE:
1. REMOVE AND HAUL OFF TREE, STUMP AND ROOTS. VOID TO BE FILLED AND COMPACTED WITH TOPSOIL. DISTURBED GROUND TO BE GRADED TO MATCH EXISTING AND PROVIDE DRAINAGE. DISTURBED GROUND TO BE SODDED TO MATCH EXISTING GRASS.
  2. SECTION A & B CENTERLINES ARE LOCATED AT PROPOSED FACE OF CURB.



ALLSOPP PARK  
 City of Little Rock

TRIM BACK LANDSCAPING AS NECESSARY  
 AND AS DIRECTED BY CITY ENGINEER

RELOCATE ROCK LANDSCAPING TO 3:1 BACK  
 SLOPE AS DIRECTED BY CITY ENGINEER  
 TO BE PAID UNDER "SITE PREPARATION"

FIELD LOCATE SPRINKLER HEADS PRIOR  
 TO CONSTRUCTION. RELOCATE OUTSIDE OF  
 CONSTRUCTION LIMITS. COORDINATE WITH  
 OWNER TO BE PAID UNDER "SITE  
 PREPARATION"

PROP. 5'-0" SIDEWALK  
 SECTION A  
 FULL DEPTH SAW  
 CUT REQ'D.  
 TO BE PAID UNDER  
 "SITE PREPARATION"

REMOVE ALL CONC AT PROP. SIDEWALK  
 TRANSITIONS AND TIE INTO NEW SIDEWALK  
 TO BE PAID UNDER "SITE PREPARATION"

REMOVE ALL STONE STEPS AT PROP. SIDEWALK  
 TRANSITIONS AND TIE INTO NEW SIDEWALK  
 TO BE PAID UNDER "SITE PREPARATION"

ACCESS RAMP  
 TYPE 3

ACCESS RAMP  
 TYPE 3  
 3'-0" min. SIDEWALK  
 WIDTH AT POLE (See  
 Detail PW-41)

KENNETH D.  
 TRANTHAM JOHN  
 BERRY NELSON  
 4421 N. Lookout St.

MARTIN CANNON  
 4415 N. Lookout St.

RAFAL & AGNEISZKA OLAN  
 4411 N. Lookout St.

ELLIOT PAYTON EVANS  
 4409 N. Lookout St.

ERIN L. HOHNBAUM  
 & REBECCA WOOD  
 4405 N. Lookout St.

DANIEL LITTLETON &  
 ANTONELLA DIMATTEO  
 4401 N. Lookout St.

N. WALNUT ST.

JOHN JOYNER  
 4325 N. Lookout St.

US BANK NATIONAL ASSOC.  
 4319 N. Lookout St.

GEO M. MONTGOMERY, Jr.  
 4315 N. Lookout St.

MATCHLINE

CI-1 (PW-1)  
 RECONSTRUCT INLET TOP  
 W/3' WING  
 RIM EL=397.00  
 THROAT EL=396.33

PI STA=10+93.01  
 N=156909.20  
 E=1215758.41  
 $\Delta=16'18'17"$   
 R=400.00'  
 T=57.30'  
 L=113.83'

BM.2  
 2 1/2" Alum. Cntrl. Cap  
 Stamped PN-2  
 N 156945.29  
 E 1215768.39  
 EL 395.15

PI STA=10+17.83  
 N=156862.49  
 E=1215695.10  
 $\Delta=61'26'07"$   
 R=30.00'  
 T=17.83'  
 L=32.17'

END CONST. SECTION A  
 4+43.43

BEGIN CONST. SECTION B

USE EXIST. INLET  
 TOP-DOWELED IN  
 (See Detail  
 PW-42)

ACCESS RAMP  
 TYPE 3

PROP. 5'-0" SIDEWALK  
 SECTION B

3'-0" min. SIDEWALK  
 WIDTH AT POLES (See  
 Detail PW-41)

1" Crimped  
 Pipe

RET. WALL

RET. WALL

RET. WALL

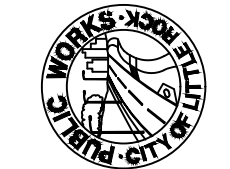
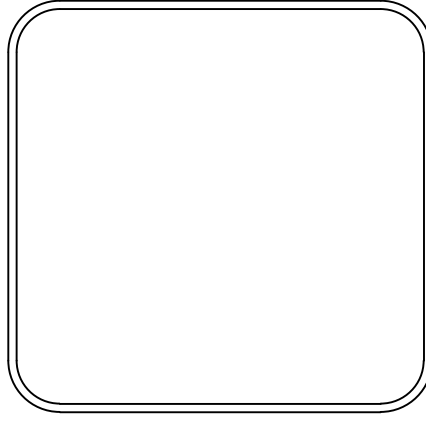
RET. WALL

RET. WALL

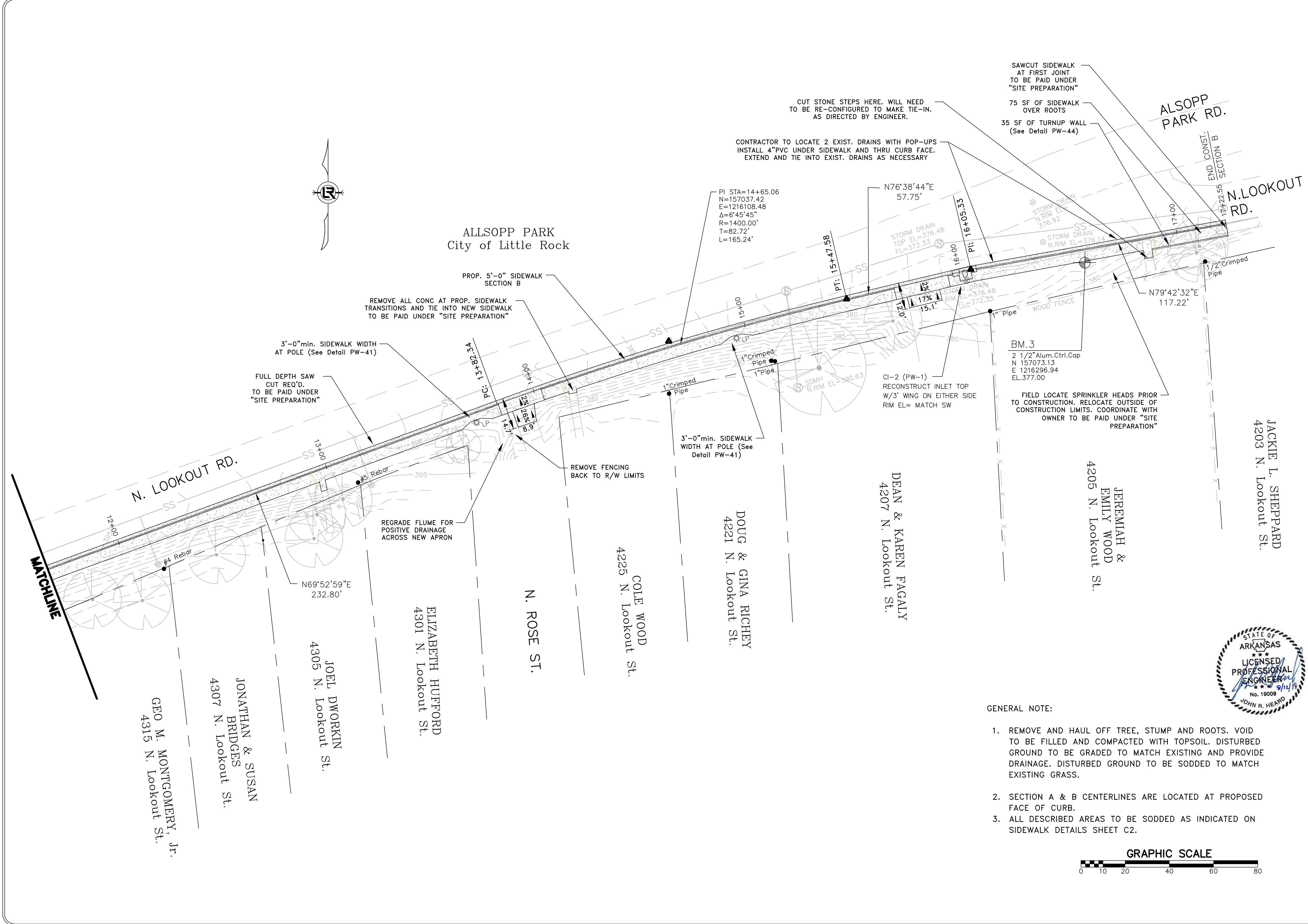
REVISIONS	DATE

CITY OF LITTLE ROCK, ARKANSAS  
**N. LOOKOUT RD. SIDEWALK REPLACEMENT**  
 PROPOSED LAYOUT (60%)

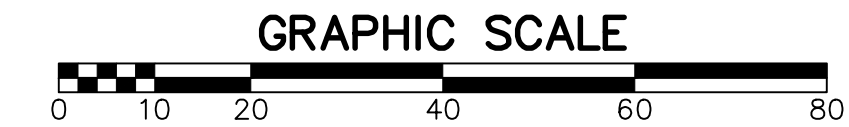
DEPARTMENT OF PUBLIC WORKS  
 CIVIL ENGINEERING  
 701 W. MARKHAM  
 LITTLE ROCK, ARKANSAS 72201

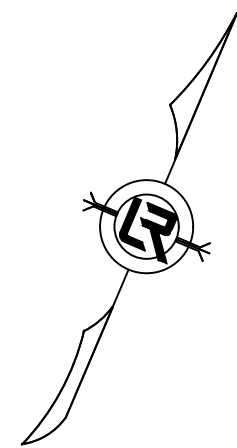



<b>DRAWN BY</b>	JRH
<b>DESIGNED</b>	JRH
<b>CHECKED</b>	JRH
<b>DATE</b>	2/18/19
<b>SCALE</b>	1"=20'
<b>PROJECT NO.</b>	03-17-SW-355
<b>SHEET NO.</b>	C4

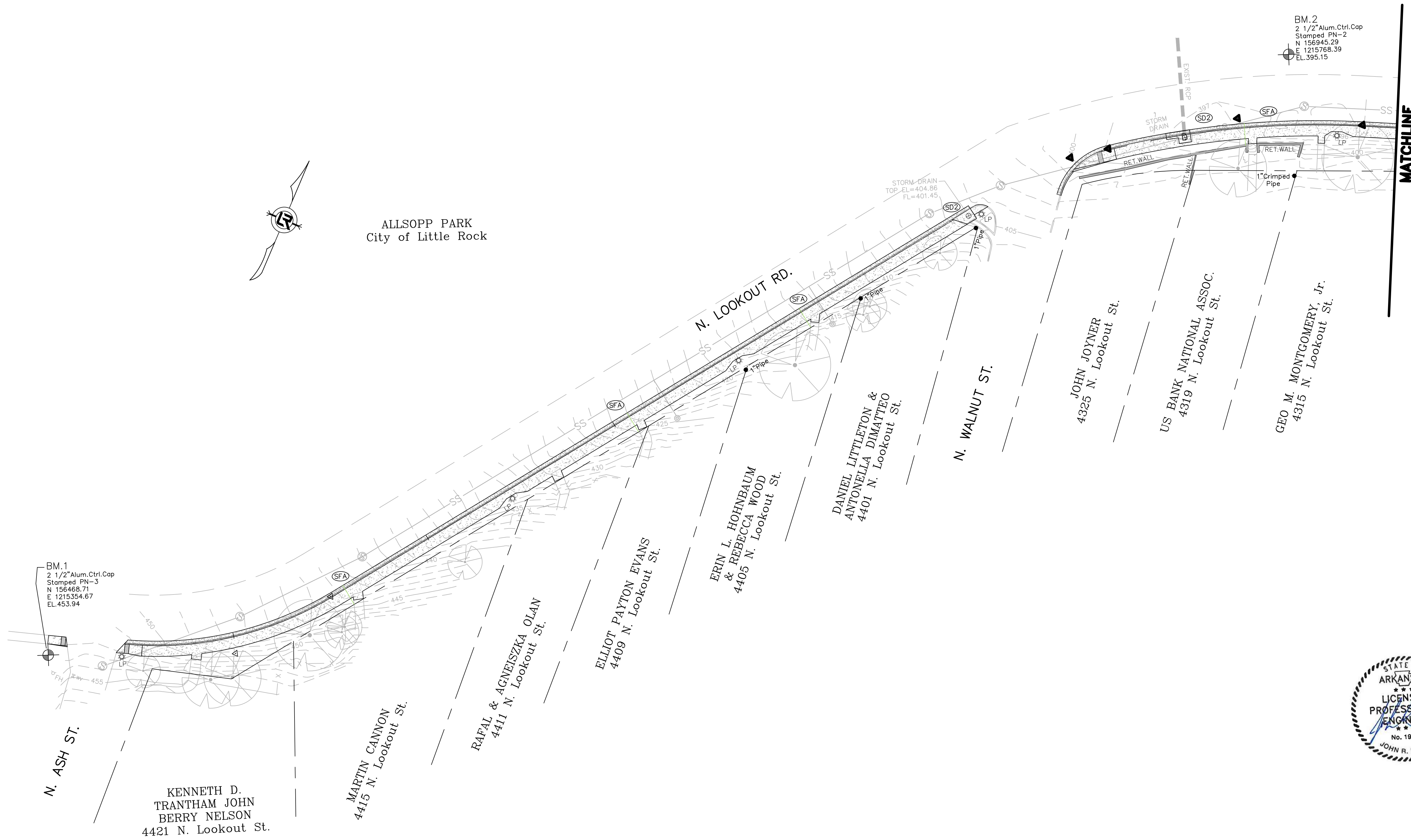


- GENERAL NOTE:**
1. REMOVE AND HAUL OFF TREE, STUMP AND ROOTS. VOID TO BE FILLED AND COMPACTED WITH TOPSOIL. DISTURBED GROUND TO BE GRADED TO MATCH EXISTING AND PROVIDE DRAINAGE. DISTURBED GROUND TO BE SODDED TO MATCH EXISTING GRASS.
  2. SECTION A & B CENTERLINES ARE LOCATED AT PROPOSED FACE OF CURB.
  3. ALL DESCRIBED AREAS TO BE SODDED AS INDICATED ON SIDEWALK DETAILS SHEET C2.





ALLSOPP PARK  
City of Little Rock



N. ASH ST.

KENNETH D.  
TRANHAM JOHN  
BERRY NELSON  
4421 N. Lookout St.

MARTIN CANNON  
4415 N. Lookout St.

RAFAL & AGNEISZKA OLAN  
4411 N. Lookout St.

ELLIOT PAYTON EVANS  
4409 N. Lookout St.

ERIN L. HOHNBAUM  
& REBECCA WOOD  
4405 N. Lookout St.

DANIEL LITTLETON &  
ANTONELLA DIMATTEO  
4401 N. Lookout St.

N. WALNUT ST.

JOHN JOYNER  
4325 N. Lookout St.

US BANK NATIONAL ASSOC.  
4319 N. Lookout St.

GEO M. MONTGOMERY, Jr.  
4315 N. Lookout St.

BM.2  
2 1/2" Alum. Ctrl. Cop  
Stamped PN-2  
N 156945.29  
E 1215768.39  
EL. 395.15

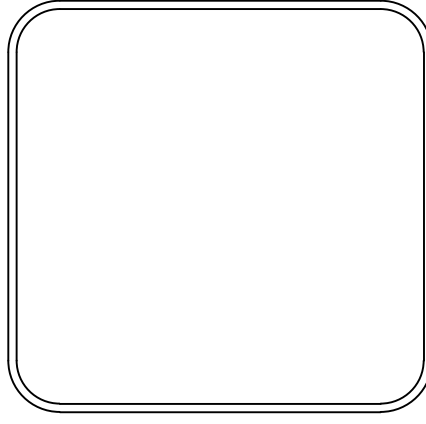
MATCHLINE



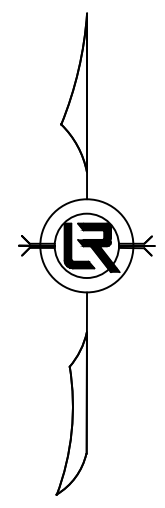
REVISIONS	DATE

CITY OF LITTLE ROCK, ARKANSAS  
N. LOOKOUT RD. SIDEWALK REPLACEMENT  
EROSION CONTROL

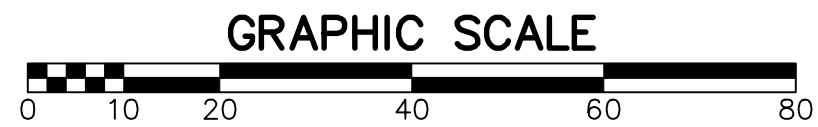
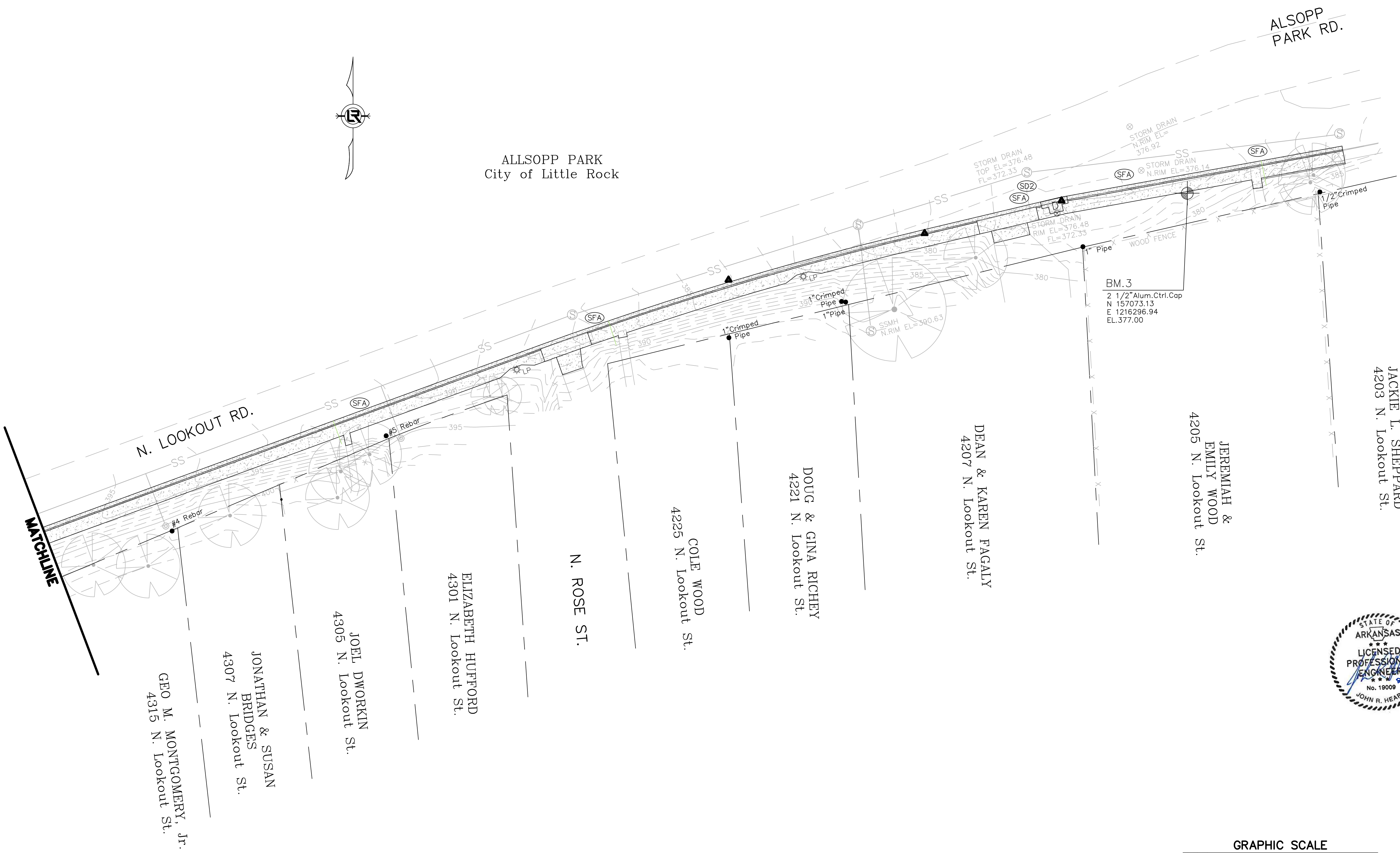
DEPARTMENT OF PUBLIC WORKS  
CIVIL ENGINEERING  
701 W. MARKHAM  
LITTLE ROCK, ARKANSAS 72201



DRAWN BY  
DESIGNED JRH  
CHECKED JRH  
DATE 2/18/19  
SCALE 1"=20'  
PROJECT NO. 03-17-SW-355  
SHEET NO. C5



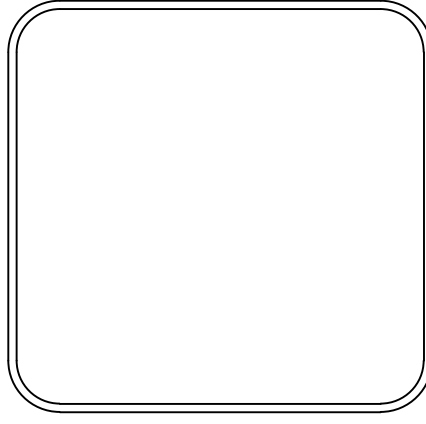
ALLSOPP PARK  
City of Little Rock



REVISIONS	DATE

CITY OF LITTLE ROCK, ARKANSAS  
 N. LOOKOUT RD. SIDEWALK REPLACEMENT  
 EROSION CONTROL

DEPARTMENT OF PUBLIC WORKS  
 CIVIL ENGINEERING  
 701 W. MARKHAM  
 LITTLE ROCK, ARKANSAS 72201



<b>DRAWN BY</b>	JRH
<b>DESIGNED</b>	JRH
<b>CHECKED</b>	JRH
<b>DATE</b>	2/18/19
<b>SCALE</b>	1"=20'
<b>PROJECT NO.</b>	03-17-SW-355
<b>SHEET NO.</b>	C6

GEO. M. MONTGOMERY, Jr.  
 4315 N. Lookout St.

JONATHAN & SUSAN  
 BRIDGES  
 4307 N. Lookout St.

JOEL DWORKIN  
 4305 N. Lookout St.

ELIZABETH HUFFORD  
 4301 N. Lookout St.

N. ROSE ST.

COLE WOOD  
 4225 N. Lookout St.

DOUG & GINA RICHEY  
 4221 N. Lookout St.

DEAN & KAREN FAGALY  
 4207 N. Lookout St.

JEREMIAH &  
 EMILY WOOD  
 4205 N. Lookout St.

JACKIE L. SHEPPARD  
 4203 N. Lookout St.