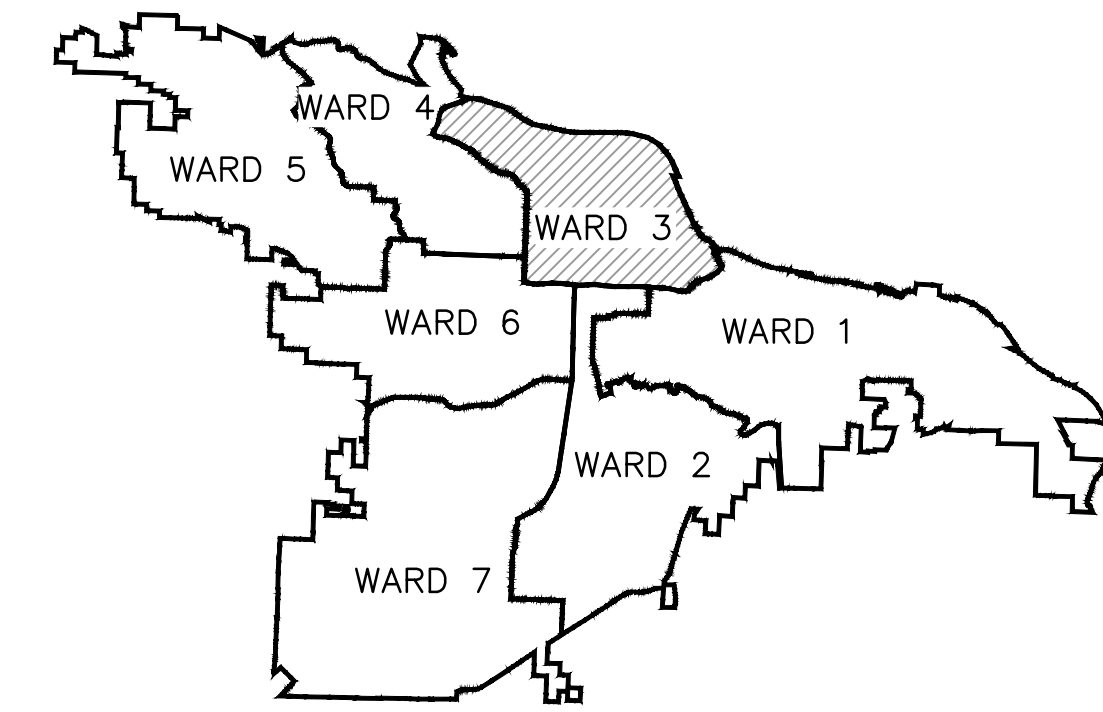


# B STREET RECONSTRUCTION

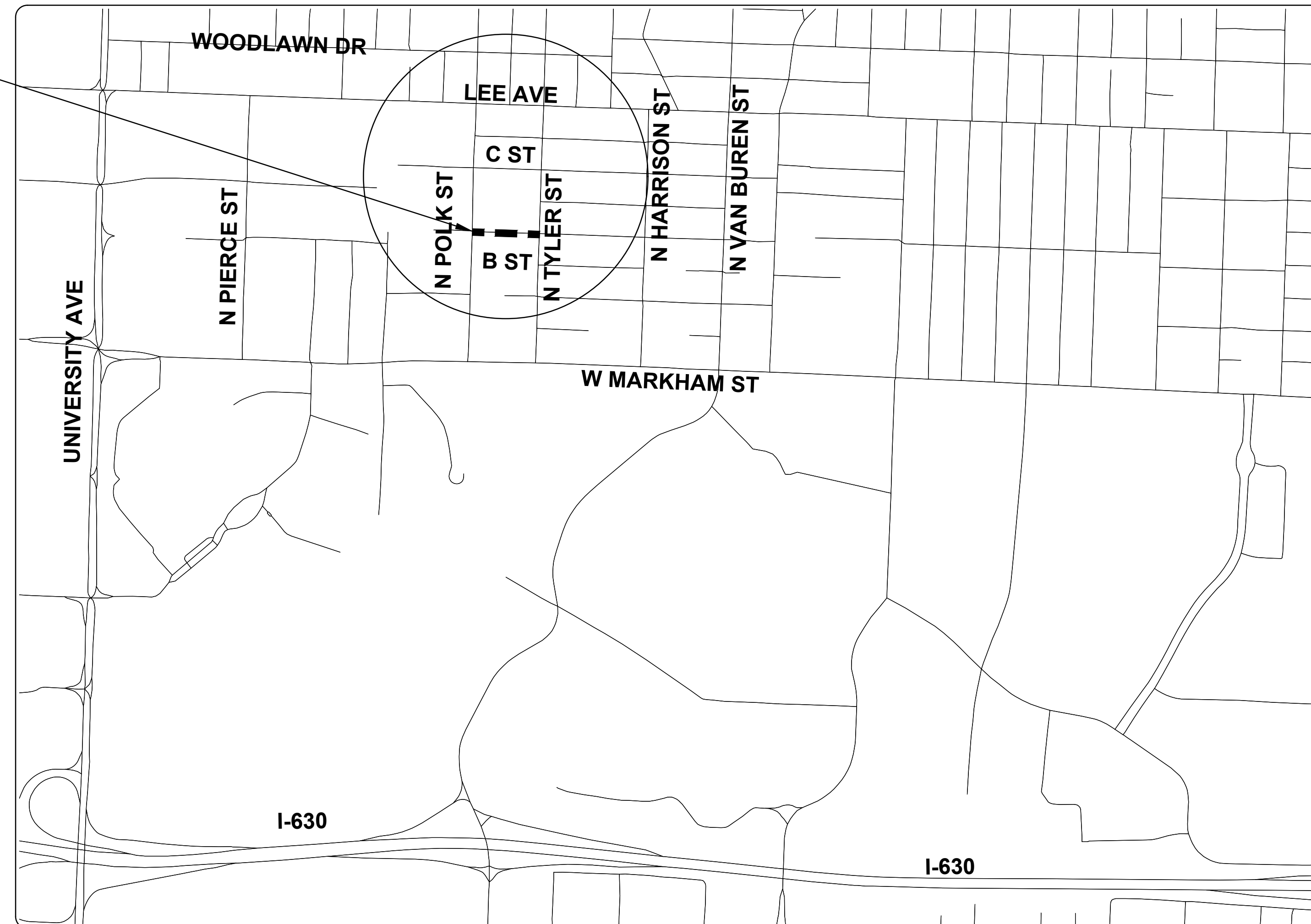
## N POLK ST TO N TYLER ST

### CLR PROJECT #03-17-ST-156

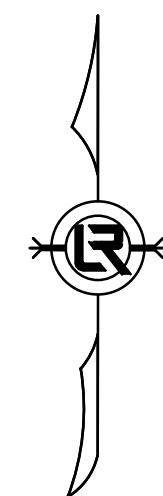


PROJECT LOCATION – WARD 3

PROJECT LOCATION



SHEET NO.	TITLE
C0	COVER SHEET
C1	LEGEND AND QUANTITIES
C2	TYPICAL SECTION
C3	EXISTING CONDITION
C4	PLAN AND PROFILE
C5	CROSS SECTIONS- I
C6	CROSS SECTIONS- II
C7	SURVEY CONTROL PLAN
C8	EROSION CONTROL PLAN - PHASE 1
C9	EROSION CONTROL PLAN - PHASES 2 AND 3
C10	MAINTENANCE OF TRAFFIC PLAN



**2019-2021**  
**BOND PROGRAM**

DEPARTMENT OF PUBLIC WORKS  
CIVIL ENGINEERING  
701 WEST MARKHAM STREET  
LITTLE ROCK, ARKANSAS 72201



Know what's below.  
Call before you dig.

**GNE**

Designing our client's success

**GarNat Engineering, LLC**

P.O. Box 116 (72018)  
2909 Military Road  
Benton, AR 72015

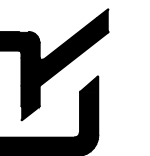
Ph (501) 408-4650  
Fx (888) 900-3068  
garnatengineering@gmail.com

REVISIONS	DATE

CITY OF LITTLE ROCK, ARKANSAS  
B STREET RECONSTRUCTIONS

COVER SHEET

DEPARTMENT OF PUBLIC WORKS  
CIVIL ENGINEERING  
701 W. MARKHAM  
LITTLE ROCK, ARKANSAS 72201



07-19-2019

DRAWN BY  
ATV  
DESIGNED  
VJW & NHC  
CHECKED  
VJW  
DATE  
07-19-2019  
SCALE  
N.T.S.

PROJECT NO.  
03-17-ST-156

SHEET NO.

C0

CLR PROJECT 03-17-ST-156			
B STREET RECONSTRUCTIONS - QUANTITIES			
JULY 19, 2019			
Item	Description	Unit	Quantity
2.01	SITE PREPARATION	LS	1
3.01	UNCLASSIFIED EXCAVATION	CY	200
3.06	BORROW MATERIAL	CY	200
3.40	TOP SOIL	CY	100
4.01	AGGREGATE BASE COURSE	TON	100
5.01	TACK COAT	GAL	90
6.10	ACHM SURFACE COURSE (TYPE 2)	TON	170
7.06	CONCRETE DRIVEWAY AND APRON (6" THICK)	SF	2520
8.01	CONCRETE CURB AND GUTTER (CLASS 3)	LF	550
9.10	CONCRETE SIDEWALK	SF	1000
10.05	CURB INLET 5' BOX	EA	5
10.07	WING 3' EXTENSION	EA	6
10.10	WING 6' EXTENSION	EA	1
13.18	STORM DRAIN PIPE, 18" (SIDE DRAIN)	LF	12
13.18	STORM DRAIN PIPE, 18" (CROSS DRAIN)	LF	151
13.24	STORM DRAIN PIPE, 24" (SIDE DRAIN)	LF	41
13.24	STORM DRAIN PIPE, 24" (CROSS DRAIN)	LF	32
13.61	TIE PIPE INTO EXISTING BOX	EA	1
14.01	SOLID SOD, BERMUDA	SY	350
14.02	SOLID SOD, SPECIAL (MATCH EXISTING )	SY	100
16.01	MAINTENANCE OF TRAFFIC	LS	1
17.01	PAVEMENT REPAIRS (PW-25)	SY	80
18.50	ACCESS RAMP (TYPE 3)	SF	150
18.55	WATER FOR DUST CONTROL	GAL	10000
19.01	FINAL CLEANUP	LS	1
23.01	B STONE	TON	160
24.05	ROCK DAM (RD)	CY	3
24.06	SEDIMENT BARRIER, SILT FENCE (SD-1)	EA	5
24.09	SEDIMENT BARRIER, BLOCK (SD-4)	EA	5
24.12	SILT FENCE (TYPE A)	LF	330
26.10	TRENCH EXCAVATION & SAFETY	LS	1
606.18C	FLARED END SECTION, 18"	EA	1
606.24C	FLARED END SECTION, 24"	EA	1

EXISTING	PROPOSED
IRON ROD	CONTOUR
PK NAIL	SPOT ELEVATION
R.R. SPIKE	SPOT CURB ELEVATION
CONC. MONUMENT	STORM SEWER - PIPE
WATER VALVE	STORM SEWER - MITERED END SECTION
WATER METER	STORM SEWER - GRATE INLET
FIRE HYDRANT	STORM SEWER - JUNCTION BOX
GAS METER	STORM SEWER - FLARED END SECTION
GAS VALVE	STORM SEWER - HEADWALL
CLEAN-OUT	STORM SEWER - INLET WITH SINGLE EXTENSION
GUARD POST (BOLLARD)	STORM SEWER - INLET WITH DOUBLE EXTENSION
SIGN POST	STORM SEWER - AREA INLET
BENCHMARK	GRADE BREAK LINE
STORM SEWER MANHOLE	HIGH POINT
SANITARY SEWER MANHOLE	LOW POINT
TELEPHONE MANHOLE	CUT LINE
ELECTRIC MANHOLE	FILL LINE
TELEPHONE BOX	SANITARY SEWER PIPE
ELECTRIC BOX	SANITARY SEWER MANHOLE
CABLE BOX	CURB
UTILITY POLE	CONCRETE
GUY WIRE	CONSTRUCTION - ENTRANCE/EXIT
LIGHT POLE	CHECK DAM
POST OR POLE (TYPE AS NOTED)	DIVERSION BERM
MAILBOX	DOWNDRAIN STRUCTURE - TEMPORARY
DECIDUOUS TREE	ROCK DAM
EVERGREEN/CONIFEROUS TREE	SEDIMENT BARRIER - SILT FENCE
BUSH	SEDIMENT BARRIER - GRAVEL RING
PROPERTY LINE	SEDIMENT BARRIER - BLOCK & GRAVEL
SETBACK LINE	SEDIMENT BARRIER - BLOCK
EASEMENT LINE	TEMPORARY SEDIMENT BASIN
CURB	SILT FENCE - TYPE A
FENCE	SILT FENCE - TYPE B
OVERHEAD UTILITY	SILT FENCE - TYPE C
UNDERGROUND TELEPHONE	STORM DRAIN OUTLET PROTECTION
UNDERGROUND ELECTRIC	SURFACE ROUGHENING
WATER LINE	DISTURBED AREA STABILIZATION -TEMPORARY STABILIZATION
SEWER LINE	DISTURBED AREA STABILIZATION -TEMPORARY GRASSING
GAS LINE	DISTURBED AREA STABILIZATION -PERMANENT GRASSING
STORM SEWER/CULVERT	MATting/BLANKETS
CONTOUR LINE	

REVISIONS	DATE

CITY OF LITTLE ROCK, ARKANSAS  
B STREET RECONSTRUCTIONS  
LEGEND & QUANTITIES

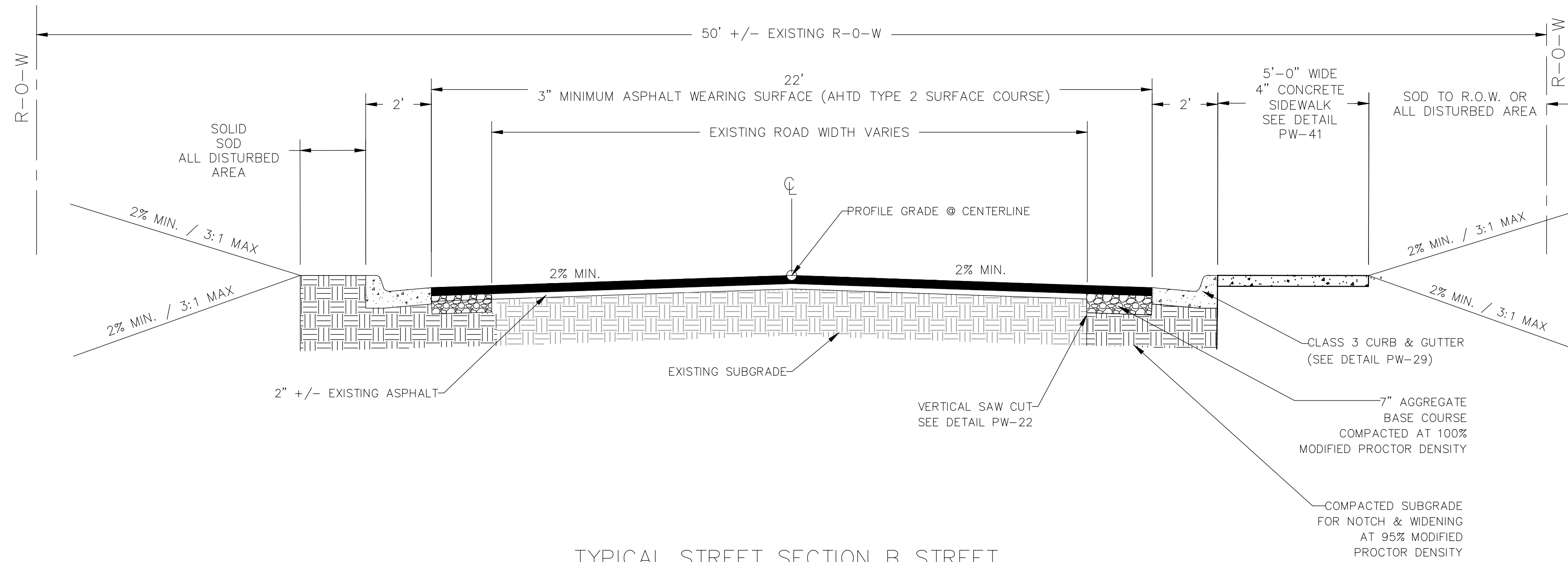
DEPARTMENT OF PUBLIC WORKS  
CIVIL ENGINEERING  
701 W. MARKHAM  
LITTLE ROCK, ARKANSAS 72201



DRAWN BY  
ATV  
DESIGNED  
VJW & NCH  
CHECKED  
VJW  
DATE  
07-19-2019  
SCALE  
N.T.S.  
PROJECT NO.  
03-17-ST-156  
SHEET NO.  
C1

REVISIONS    DATE


CITY OF LITTLE ROCK, ARKANSAS  
 B STREET RECONSTRUCTION  
 TYPICAL SECTION



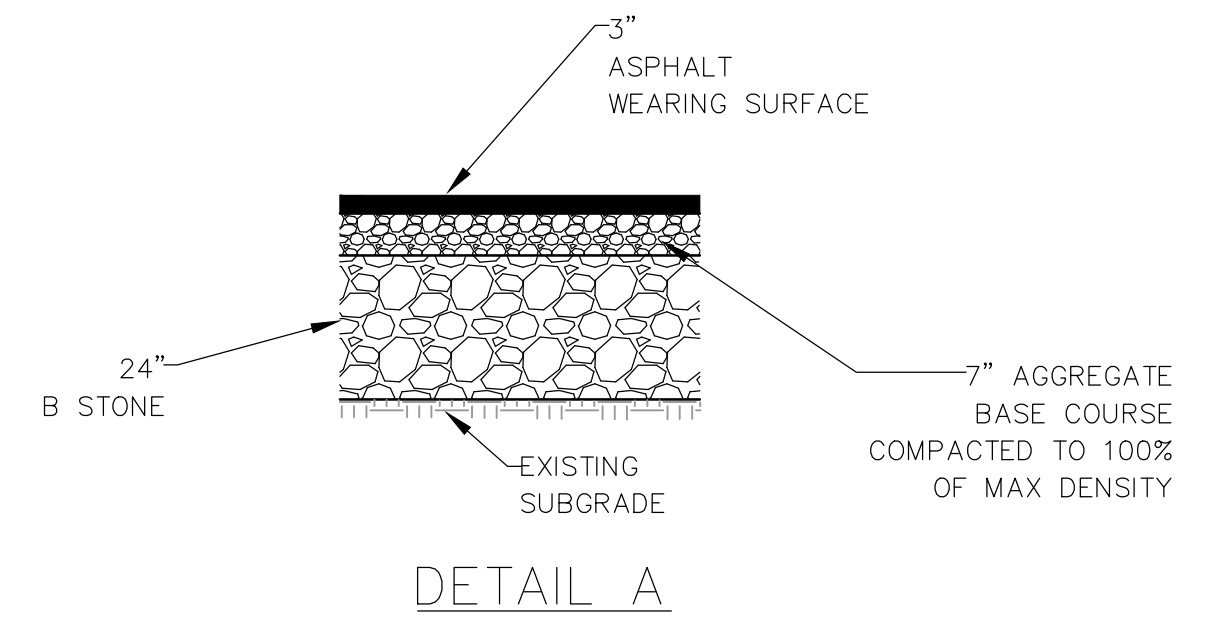
TYPICAL STREET SECTION B STREET

SCALE: 1/8" = 1'-0"

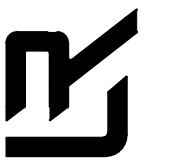
STA 1+87 TO STA 5+44

GENERAL STREET CONSTRUCTION NOTES:

1. WORK ASSOCIATED WITH THESE DETAILS COMPLY WITH LITTLE ROCK PW-22 DETAIL.
2. IF OR WHERE DIRECTED, UNDERCUT, EXCAVATE AND RECONSTRUCT SUBGRADE WITH B STONE PER DETAIL A AS DIRECTED BY ENGINEER TO REPAIR SUBGRADE FAILURES.



DEPARTMENT OF PUBLIC WORKS  
 CIVIL ENGINEERING  
 701 W. MARKHAM  
 LITTLE ROCK, ARKANSAS 72201



07-19-2019

DRAWN BY  
 ATV  
 DESIGNED  
 VJW & NHC  
 CHECKED  
 VJW  
 DATE  
 07-19-2019  
 SCALE  
 N.T.S.  
 PROJECT NO.  
 03-17-ST-156  
 SHEET NO.

C2

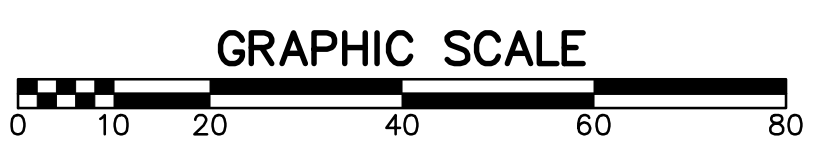
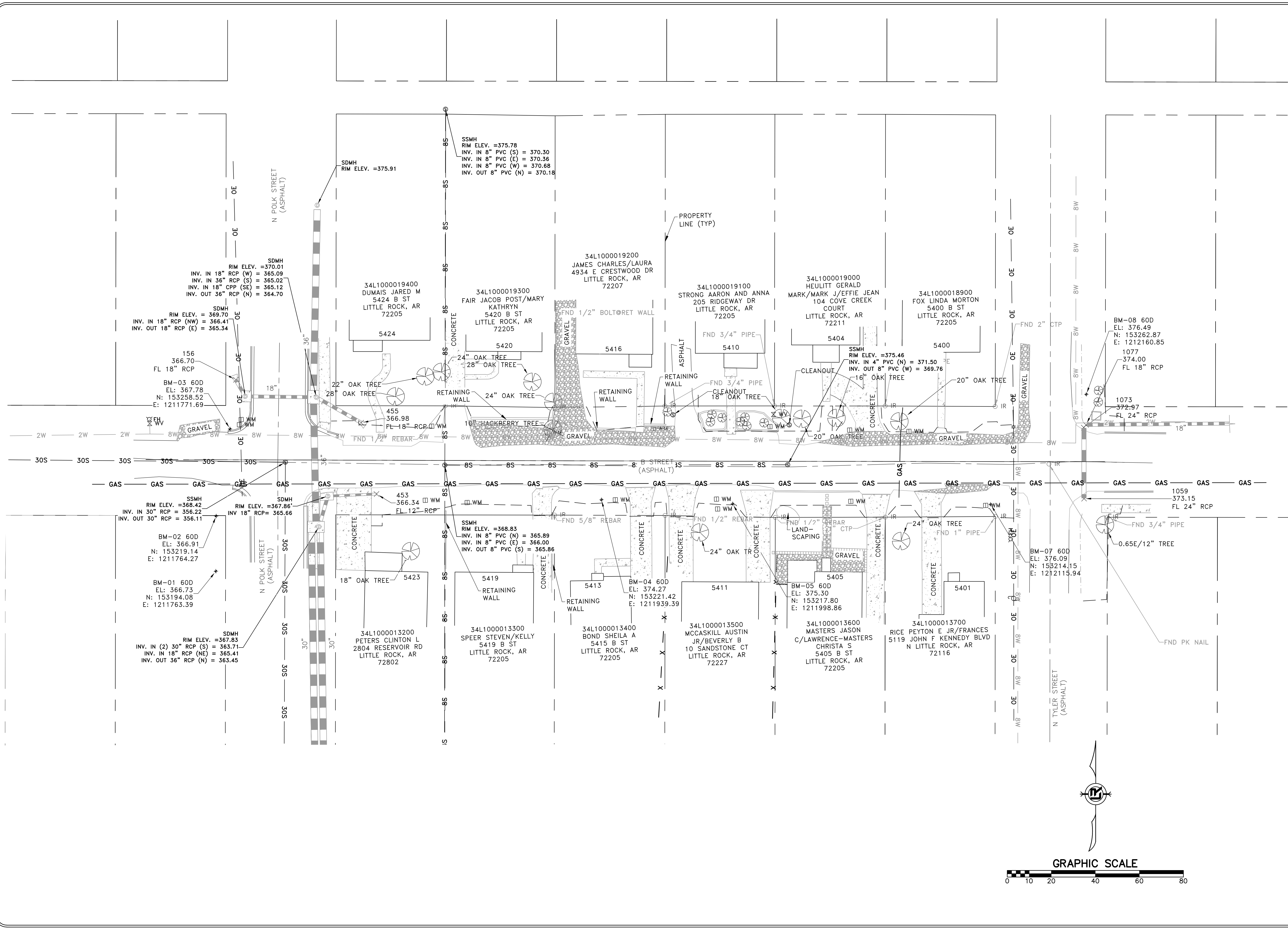
REVISIONS	DATE

CITY OF LITTLE ROCK, ARKANSAS  
 B STREET RECONSTRUCTIONS  
 EXISTING CONDITION

DEPARTMENT OF PUBLIC WORKS  
 CIVIL ENGINEERING  
 701 W. MARKHAM  
 LITTLE ROCK, ARKANSAS 72201



DRAWN BY  
 ATV  
 DESIGNED  
 NCH  
 CHECKED  
 VJW  
 DATE  
 07-19-2019  
 SCALE  
 1"=20" (22X34)  
 PROJECT NO.  
 03-17-ST-156  
 SHEET NO.  
 C3



STA 1+46 LT - IN PLACE  
EXISTING CURB INLET  
RIM ELEV = 369.70  
INV 18" RCP (NW) = 366.41  
INV 18" RCP (E) = 365.34  
TO REMAIN

STA 1+75 LT - IN PLACE  
EXISTING CURB INLET-1  
RIM ELEV = 439.54  
INV 18" RCP (W) = 365.09  
INV 36" RCP (S) = 365.02  
INV 36" RCP (N) = 364.70  
TO REMAIN  
REMOVE SE 18" PIPE INLET

STA 2+84 LT  
REMOVE EXISTING  
HACKBERRY TREE  
(SITE PREP)

STA 3+36 TO 4+45 LT  
PROTECT GARDEN BED,  
TREES, AND SHRUBS

STA 3+56 TO 4+18 LT - IN PLACE  
TREES AND SHRUBS TO REMAIN  
STA 4+80 LT- IN PLACE  
POWER POLE  
RELOCATE

STA 5+34 - IN PLACE  
GARDEN BED  
REMOVE  
RELOCATE STOP SIGN

STA 5+40 - IN PLACE  
18" PIPE INLET FILL WITH  
GROUT MATERIAL

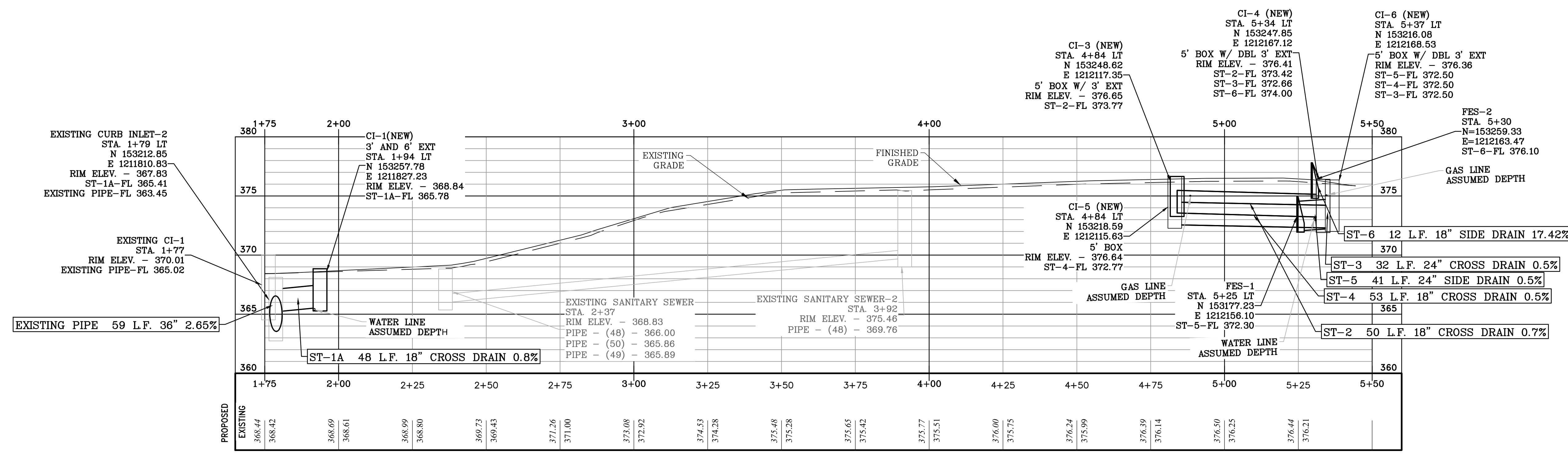
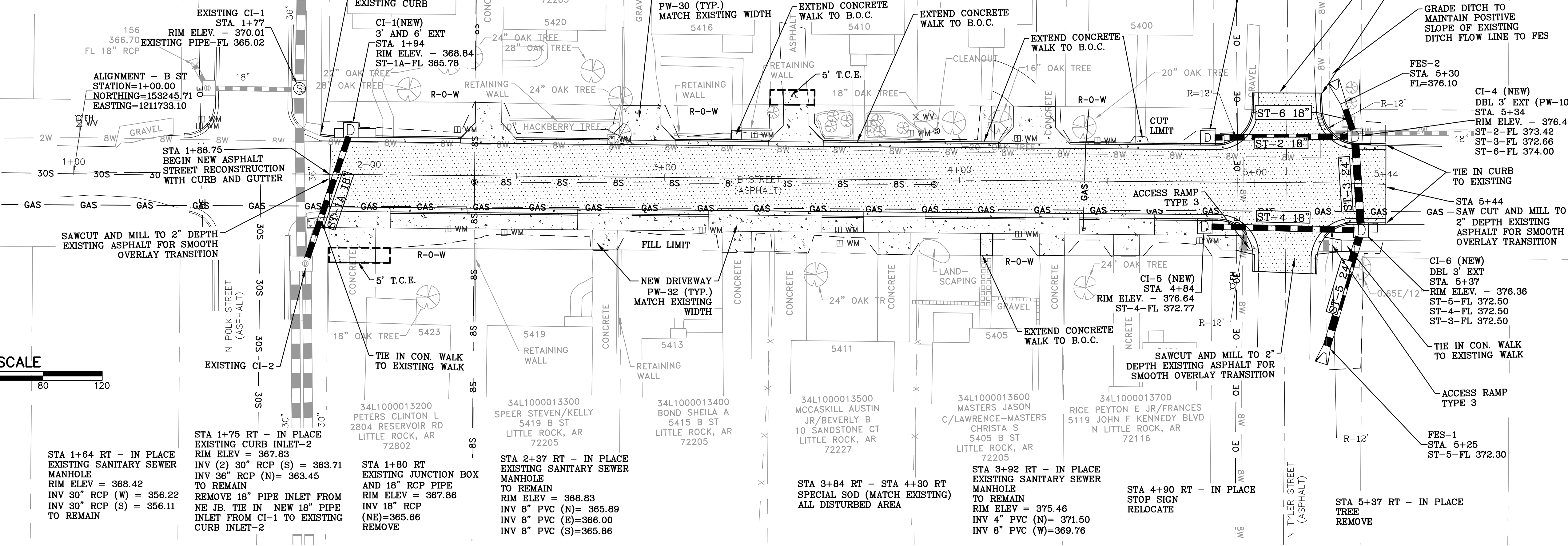
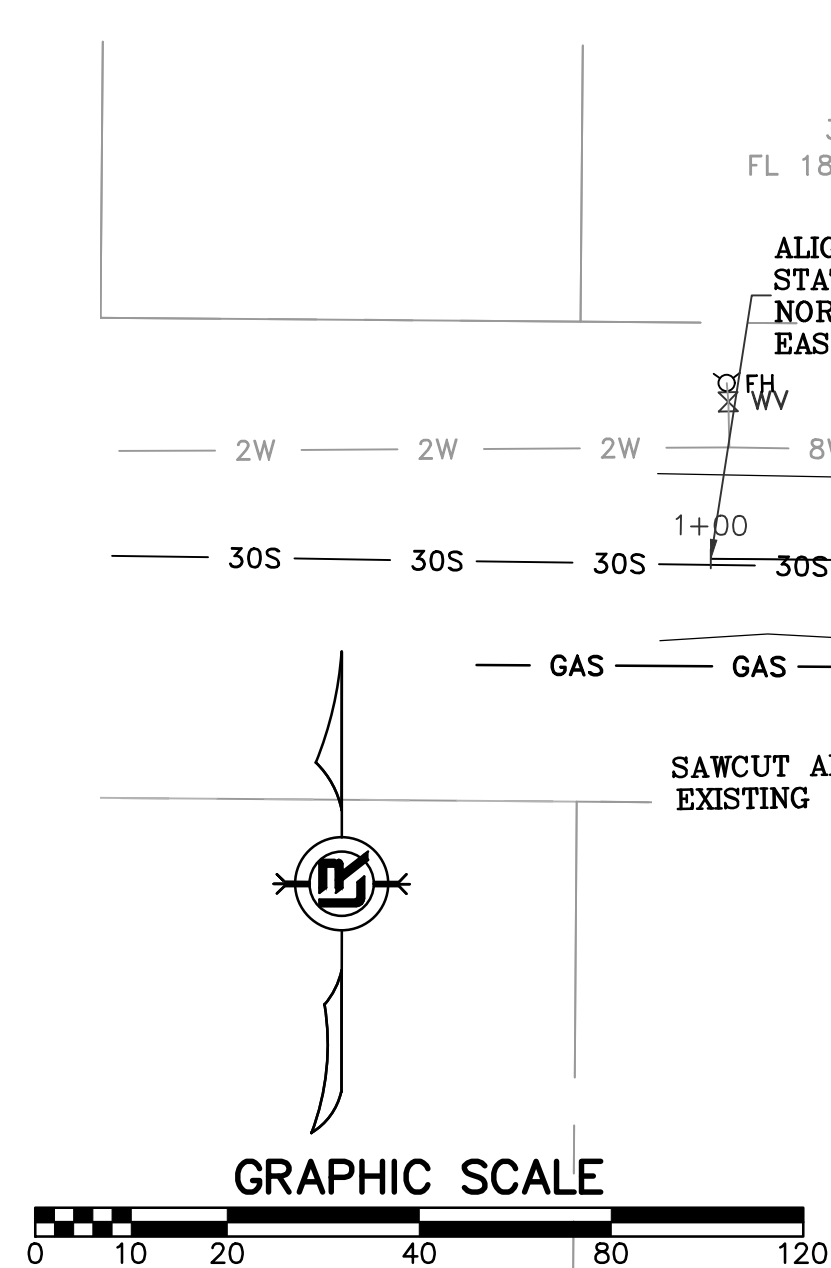
REVISIONS	DATE

CITY OF LITTLE ROCK, ARKANSAS  
B STREET RECONSTRUCTION  
PLAN AND PROFILE

DEPARTMENT OF PUBLIC WORKS  
CIVIL ENGINEERING  
701 W. MARKHAM  
LITTLE ROCK, ARKANSAS 72201



DRAWN BY  
NHC & ATV  
DESIGNED  
NHC & VJW  
CHECKED  
VJW  
DATE  
07-19-2019  
SCALE  
1"=20' (22X34)  
PROJECT NO.  
03-17-ST-156  
SHEET NO.  
C4



STA 1+64 RT - IN PLACE  
EXISTING SANITARY SEWER  
MANHOLE  
RIM ELEV = 368.42  
INV 30" RCP (W) = 356.22  
INV 30" RCP (S) = 356.11  
TO REMAIN

STA 1+75 RT - IN PLACE  
EXISTING CURB INLET-2  
RIM ELEV = 367.83  
INV (2) 30" RCP (S) = 363.71  
INV 36" RCP (N) = 363.45  
TO REMAIN  
REMOVE 18" PIPE INLET FROM  
NE JB. TIE IN NEW 18" PIPE  
INLET FROM CI-1 TO EXISTING  
CURB INLET-2

STA 1+80 RT  
EXISTING JUNCTION BOX  
AND 18" RCP PIPE  
RIM ELEV = 367.86  
INV 18" RCP  
(NE) = 365.66  
REMOVE

STA 2+37 RT - IN PLACE  
EXISTING SANITARY SEWER  
MANHOLE  
TO REMAIN  
RIM ELEV = 368.83  
INV 8" PVC (N) = 365.89  
INV 8" PVC (E) = 366.00  
INV 8" PVC (S) = 365.86

STA 3+84 RT - STA 4+30 RT  
SPECIAL SOD (MATCH EXISTING)  
ALL DISTURBED AREA

STA 3+92 RT - IN PLACE  
EXISTING SANITARY SEWER  
MANHOLE  
TO REMAIN  
RIM ELEV = 375.46  
INV 4" PVC (N) = 371.50  
INV 8" PVC (W) = 369.76

STA 4+90 RT - IN PLACE  
STOP SIGN  
RELOCATE

STA 5+37 RT - IN PLACE  
TREE  
REMOVE

EXISTING PIPE 59 L.F. 36" 2.65%

ST-1A 48 L.F. 18" CROSS DRAIN 0.8%

EXISTING SANITARY SEWER-2  
RIM ELEV. - 375.46  
PIPE - (48) - 369.76

GAS LINE ASSUMED DEPTH  
WATER LINE ASSUMED DEPTH

ST-6 12 L.F. 18" SIDE DRAIN 17.42%

ST-3 32 L.F. 24" CROSS DRAIN 0.5%

ST-5 41 L.F. 24" SIDE DRAIN 0.5%

ST-4 53 L.F. 18" CROSS DRAIN 0.5%

ST-2 50 L.F. 18" CROSS DRAIN 0.7%

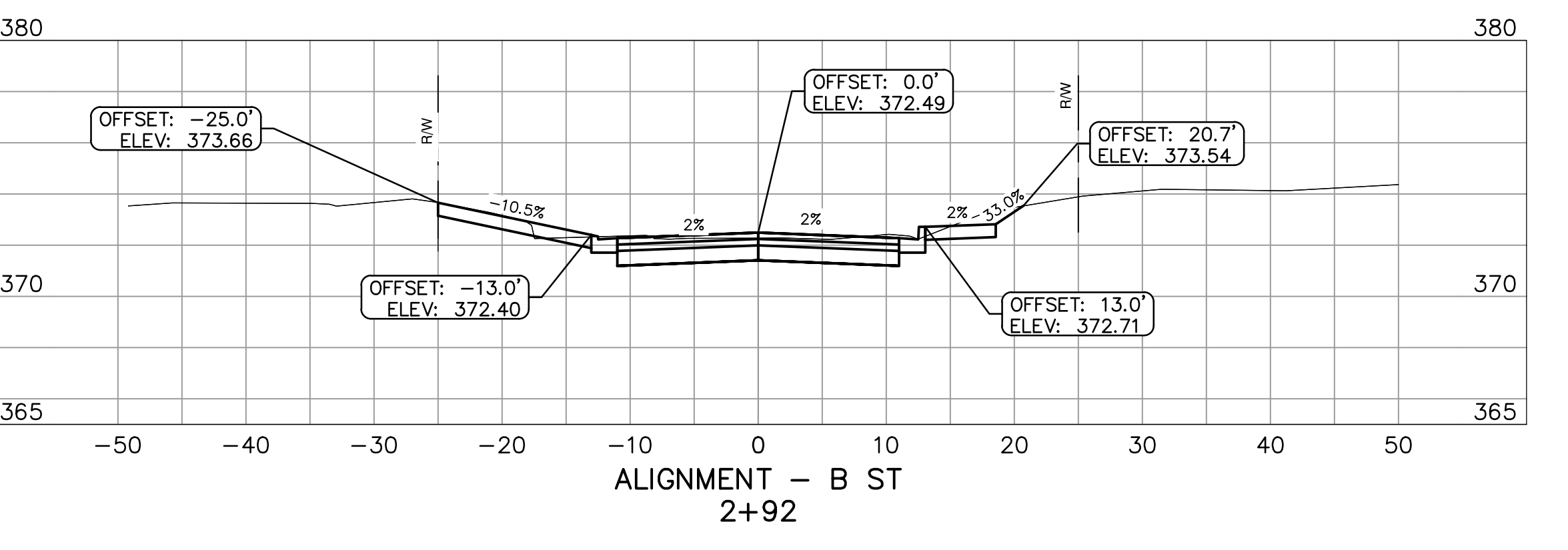
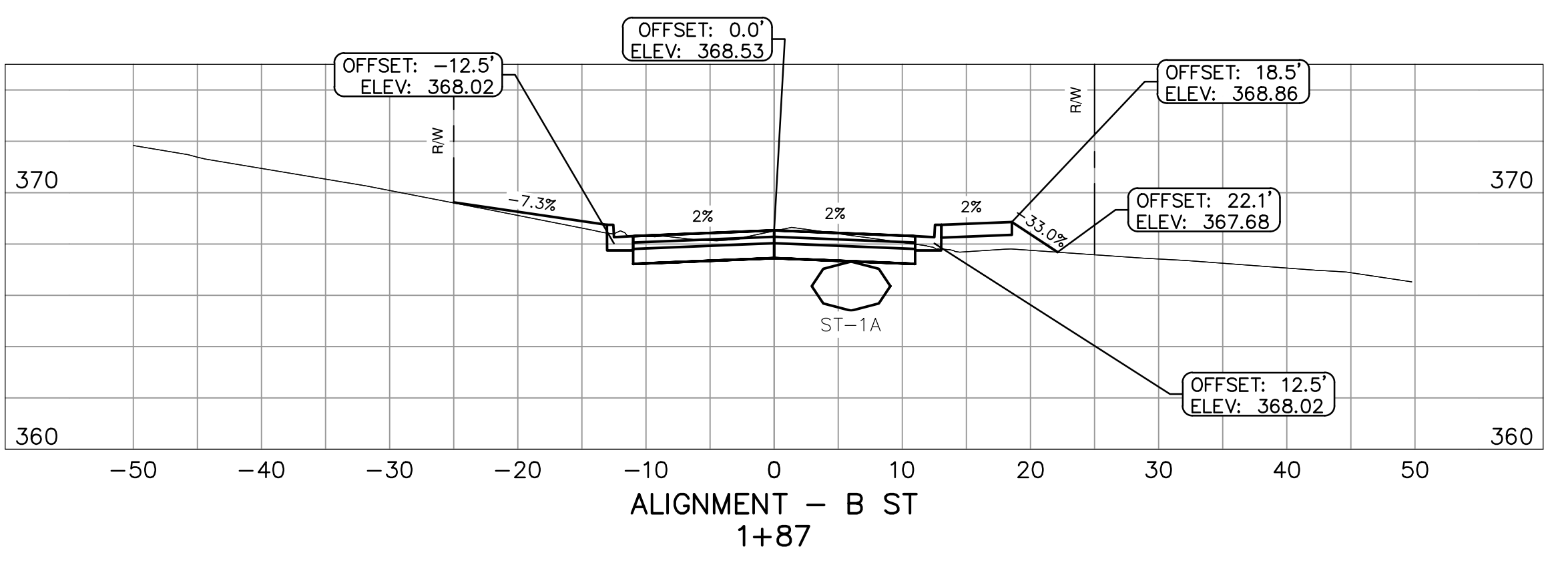
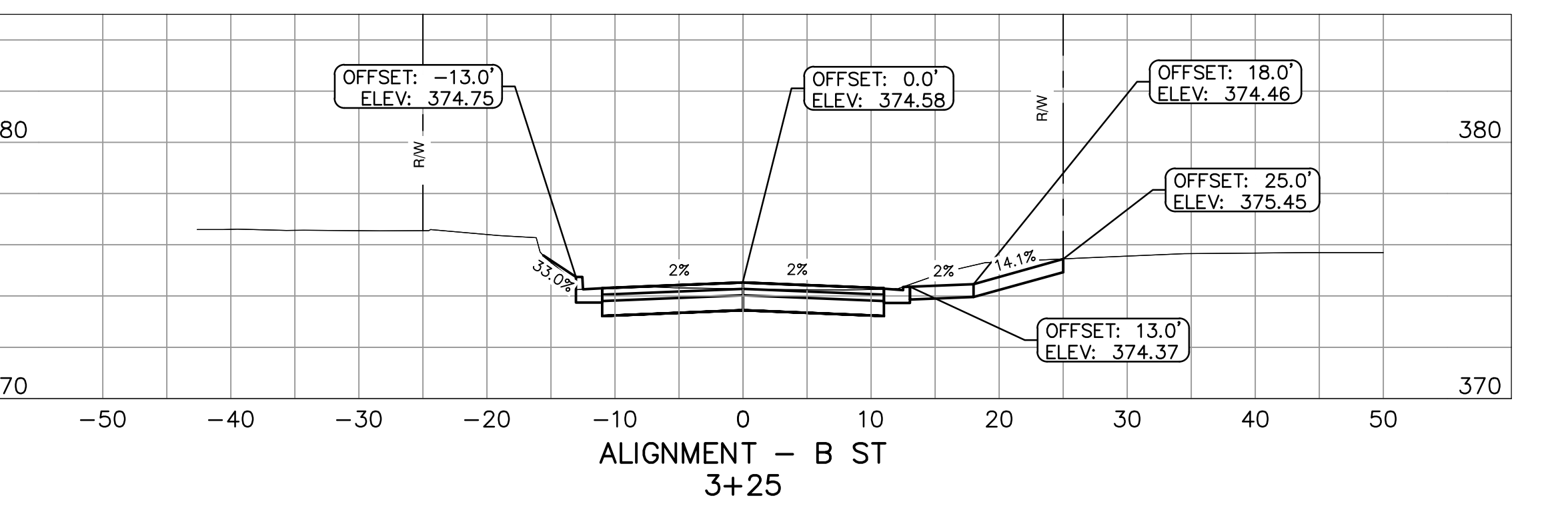
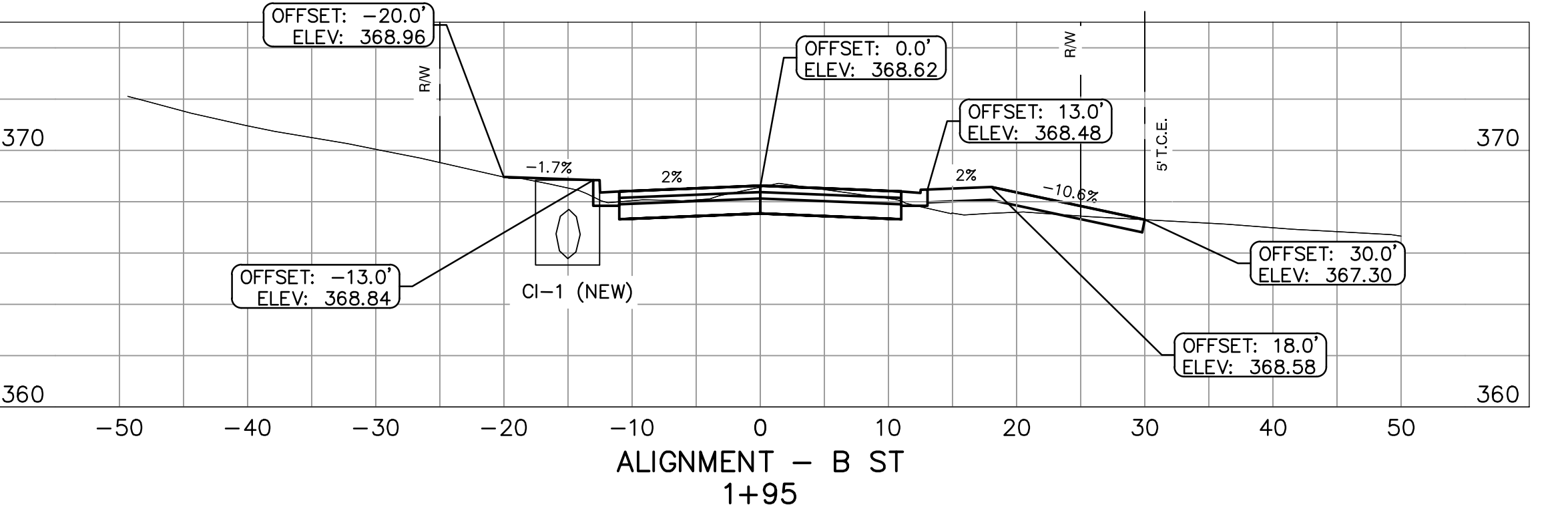
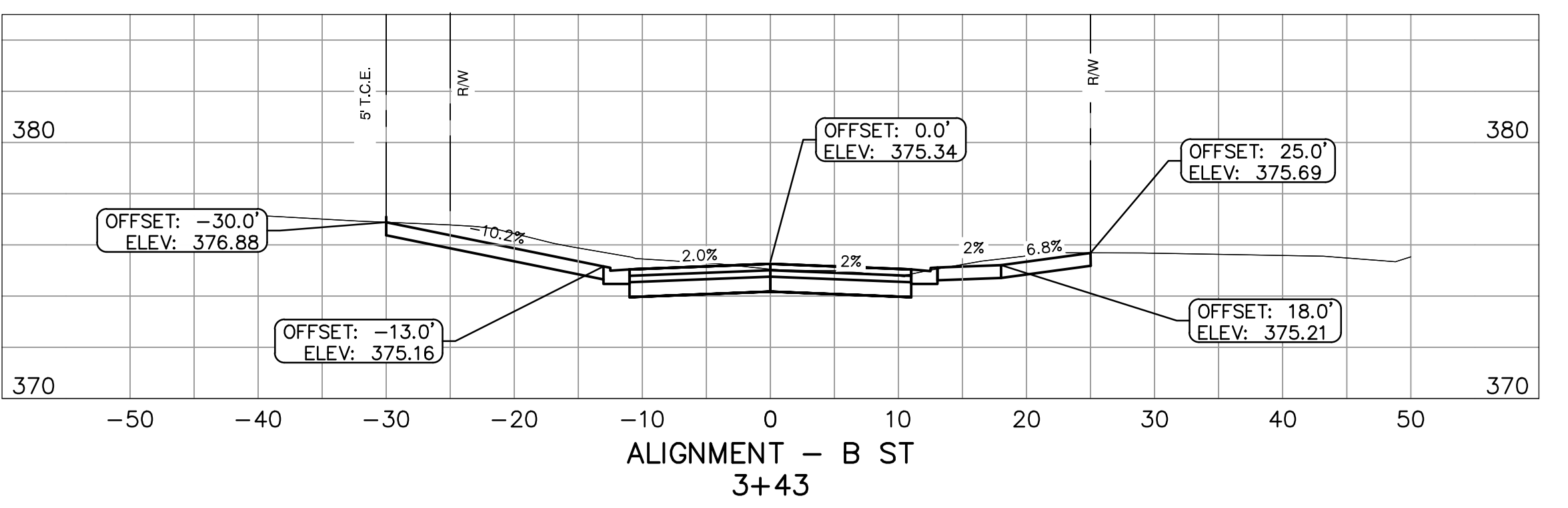
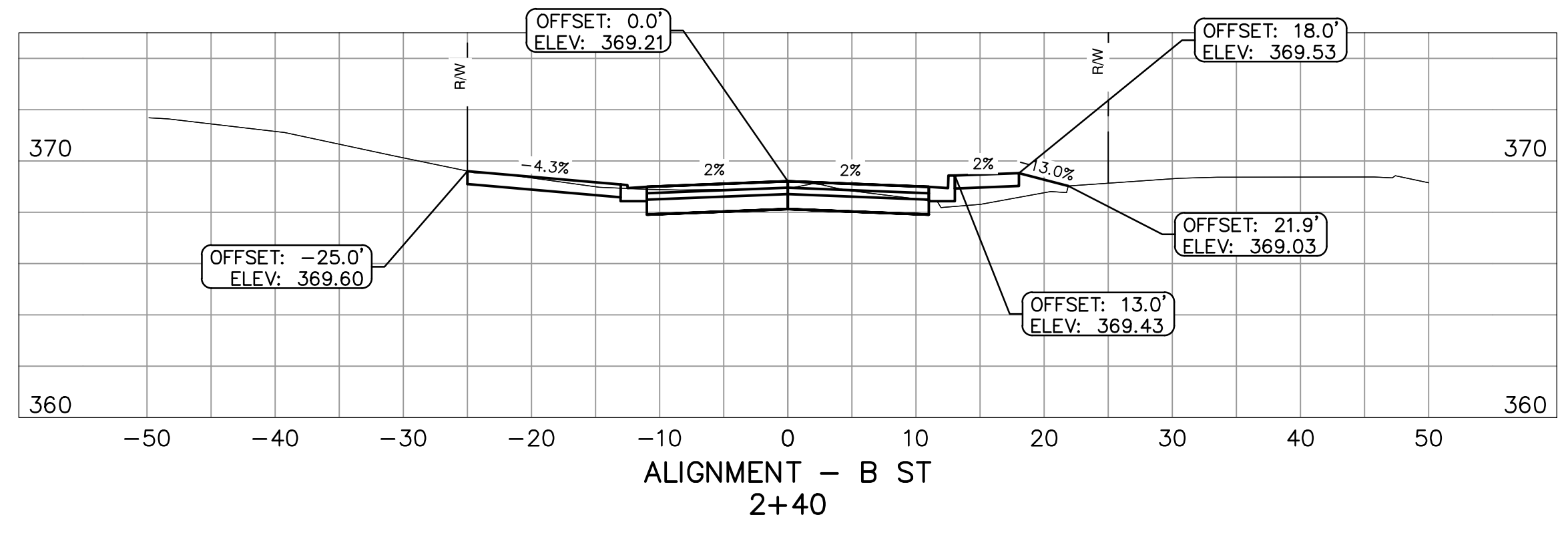
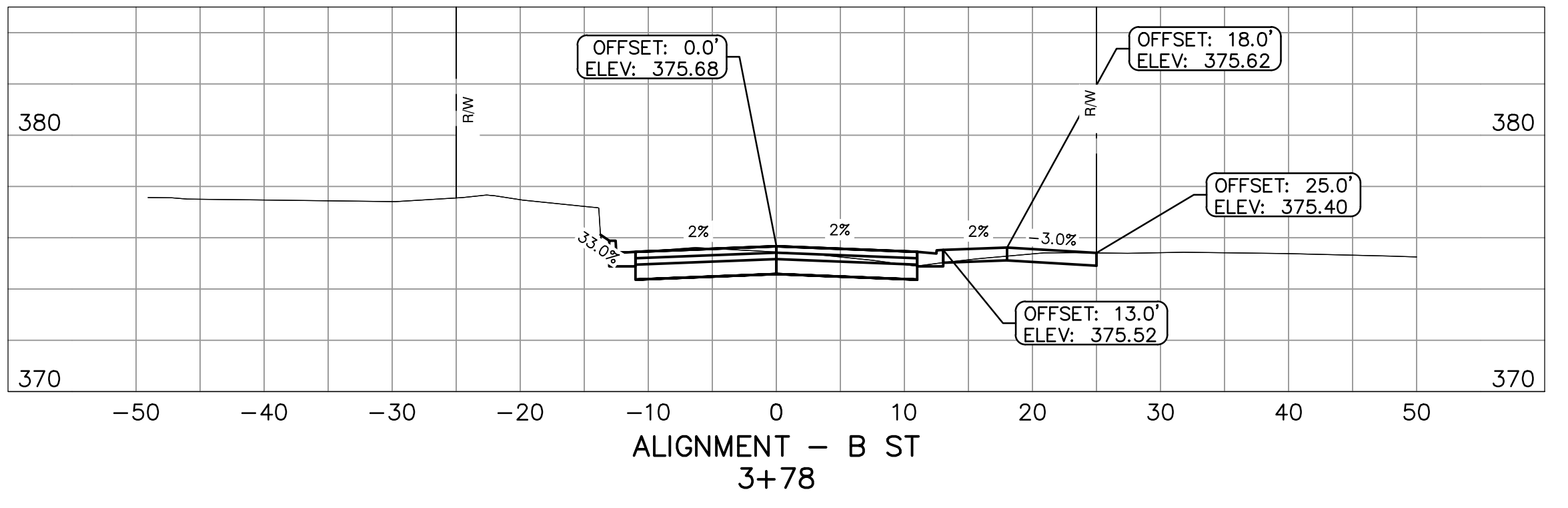
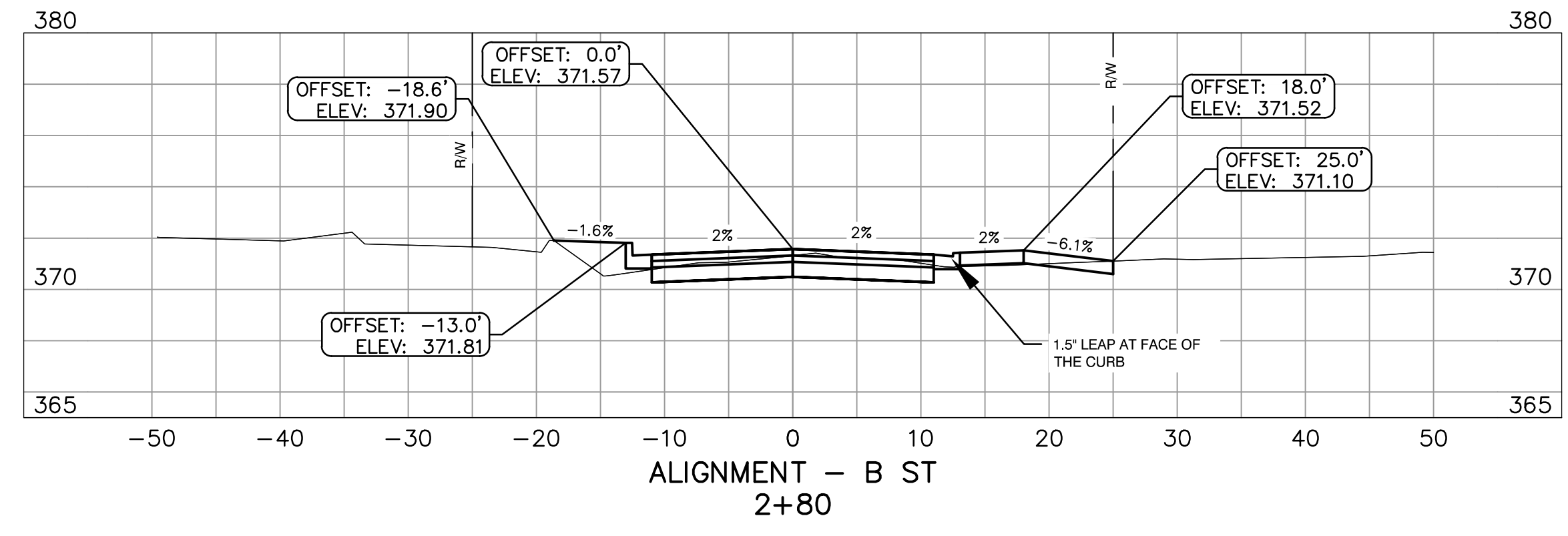
REVISIONS	DATE

**CITY OF LITTLE ROCK, ARKANSAS**  
**B STREET RECONSTRUCTIONS**  
**CROSS SECTIONS - I**

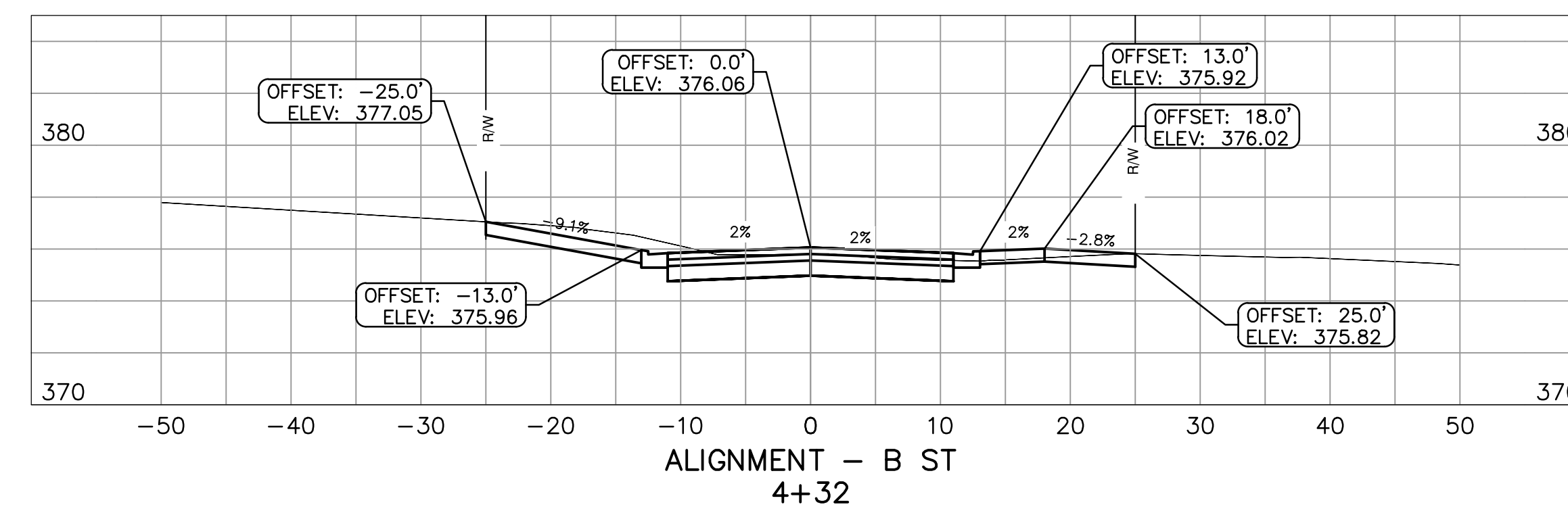
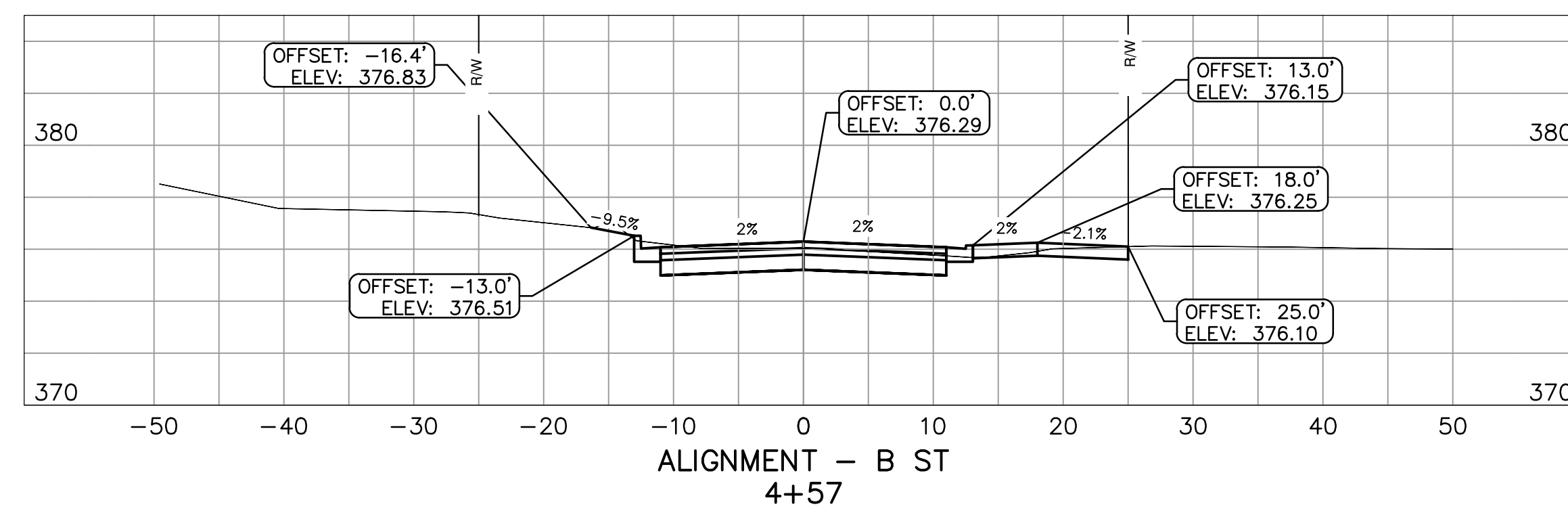
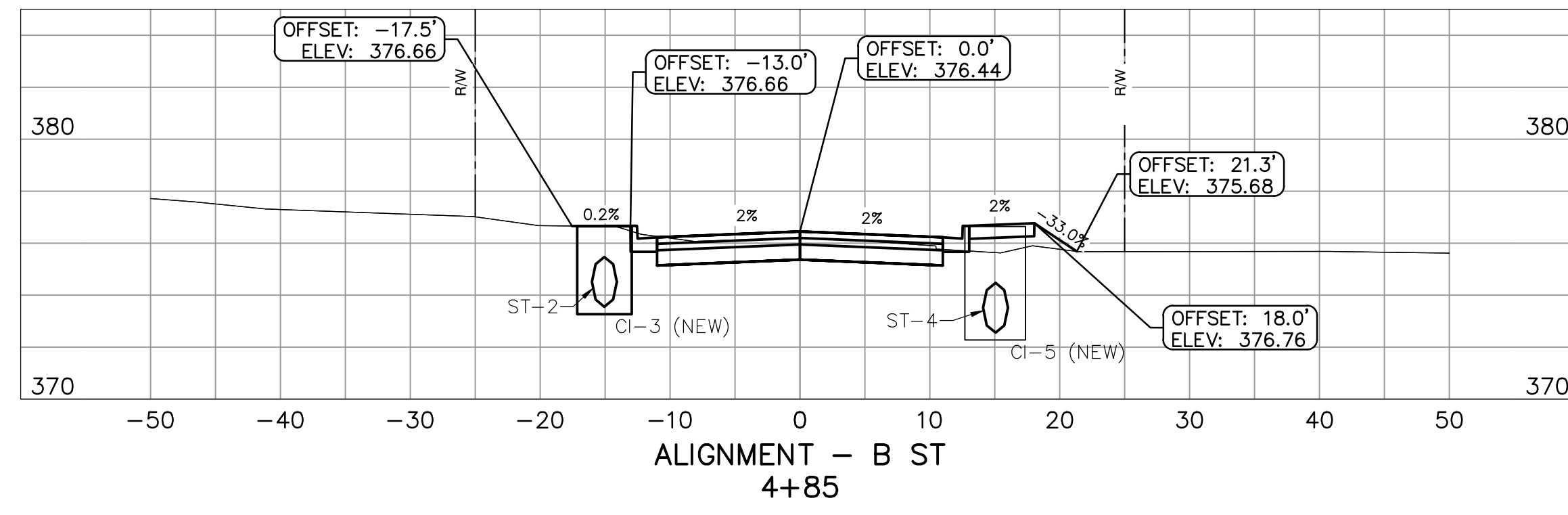
DEPARTMENT OF PUBLIC WORKS  
 CIVIL ENGINEERING  
 701 W. MARKHAM  
 LITTLE ROCK, ARKANSAS 72201



**DRAWN BY**  
NHC & ATV  
**DESIGNED**  
NHC & VJW  
**CHECKED**  
VJW  
**DATE**  
07-19-2019  
**SCALE**  
1"=10' HZ : 1"=5' VT  
**PROJECT NO.**  
03-17-ST-156  
**SHEET NO.**  
C5



REVISIONS	DATE



CITY OF LITTLE ROCK, ARKANSAS  
B STREET CONSTRUCTIONS  
CROSS SECTIONS - II

DEPARTMENT OF PUBLIC WORKS  
CIVIL ENGINEERING  
701 W. MARKHAM  
LITTLE ROCK, ARKANSAS 72201

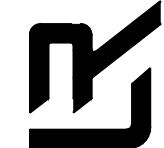


DRAWN BY  
NHC & ATV  
DESIGNED  
NHC & VJW  
CHECKED  
VJW  
DATE  
07-19-2019  
SCALE  
1"=10' HZ : 1"=5' VT  
PROJECT NO.  
03-17-ST-156  
SHEET NO.  
C6

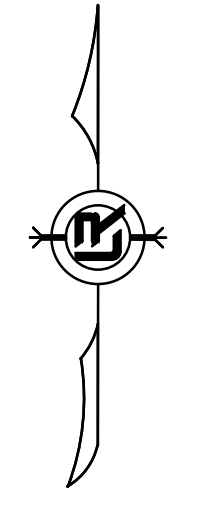
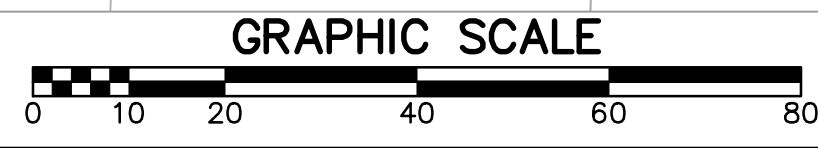
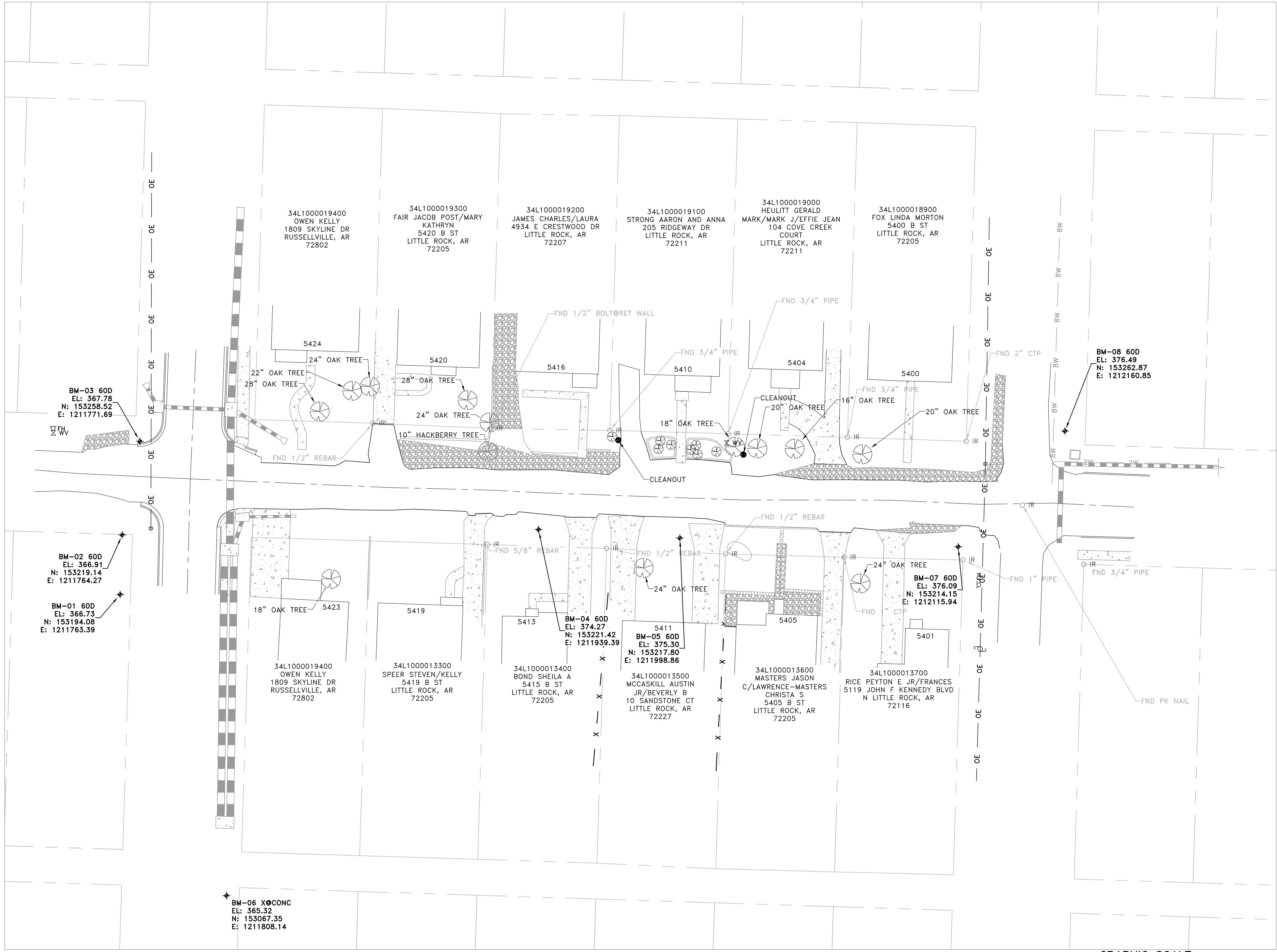
REVISIONS	DATE

CITY OF LITTLE ROCK, ARKANSAS  
 B STREET RECONSTRUCTIONS  
 SURVEY CONTROL PLAN

DEPARTMENT OF PUBLIC WORKS  
 CIVIL ENGINEERING  
 701 W. MARKHAM  
 LITTLE ROCK, ARKANSAS 72201

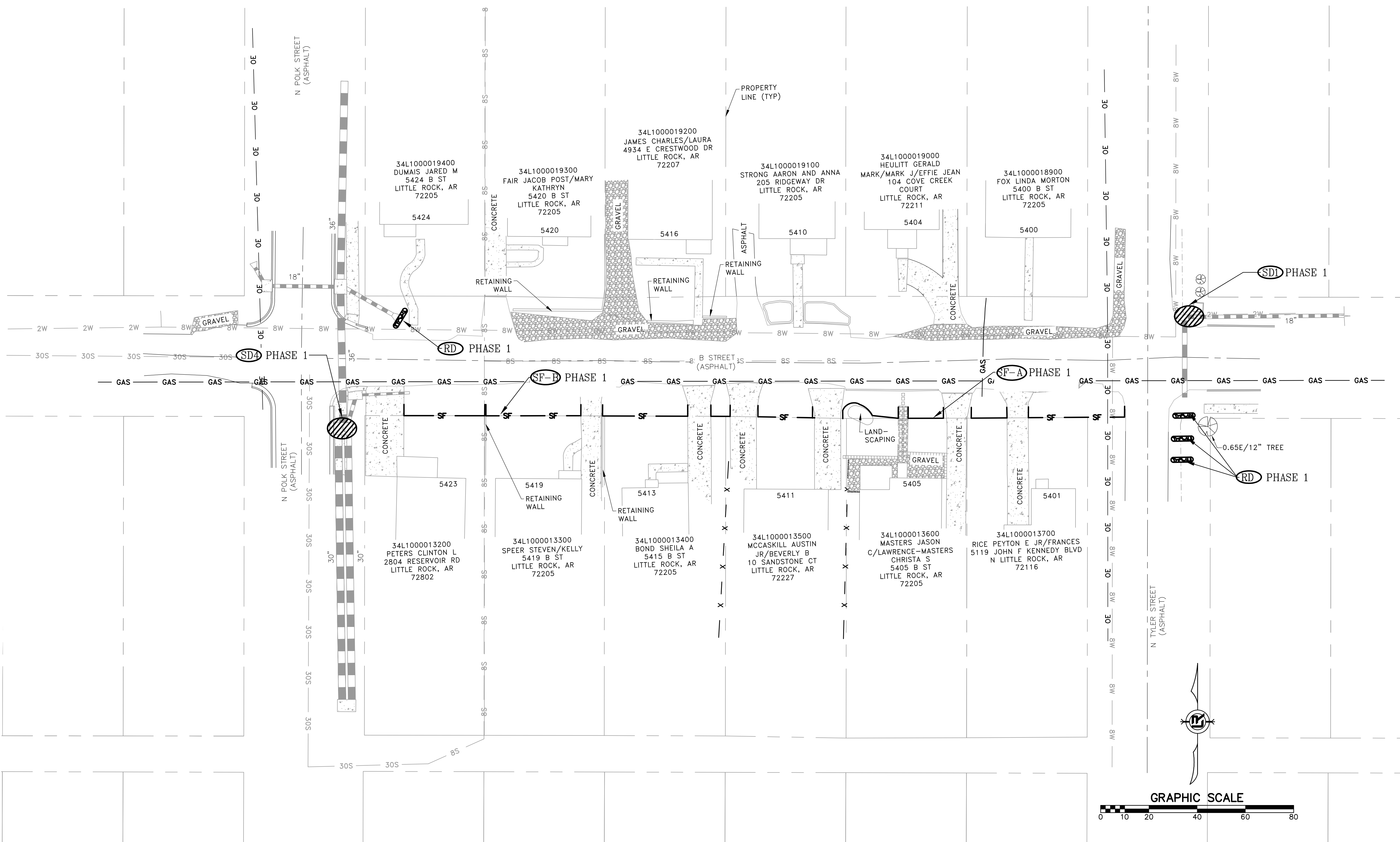


DRAWN BY ATV
DESIGNED VJW & NHC
CHECKED VJW
DATE 07-19-2019
SCALE 1"=20' (22X34)
PROJECT NO. 03-17-ST-156
SHEET NO. C7





**PHASING LEGEND**  
**PHASE 1 (INITIAL STRIP AND DEMOLITION)**



REVISIONS	DATE

**CITY OF LITTLE ROCK, ARKANSAS**  
**B STREET RECONSTRUCTIONS**  
**EROSION CONTROL PLAN - PHASE 1**

**DEPARTMENT OF PUBLIC WORKS**  
**CIVIL ENGINEERING**  
**701 W. MARKHAM**  
**LITTLE ROCK, ARKANSAS 72201**

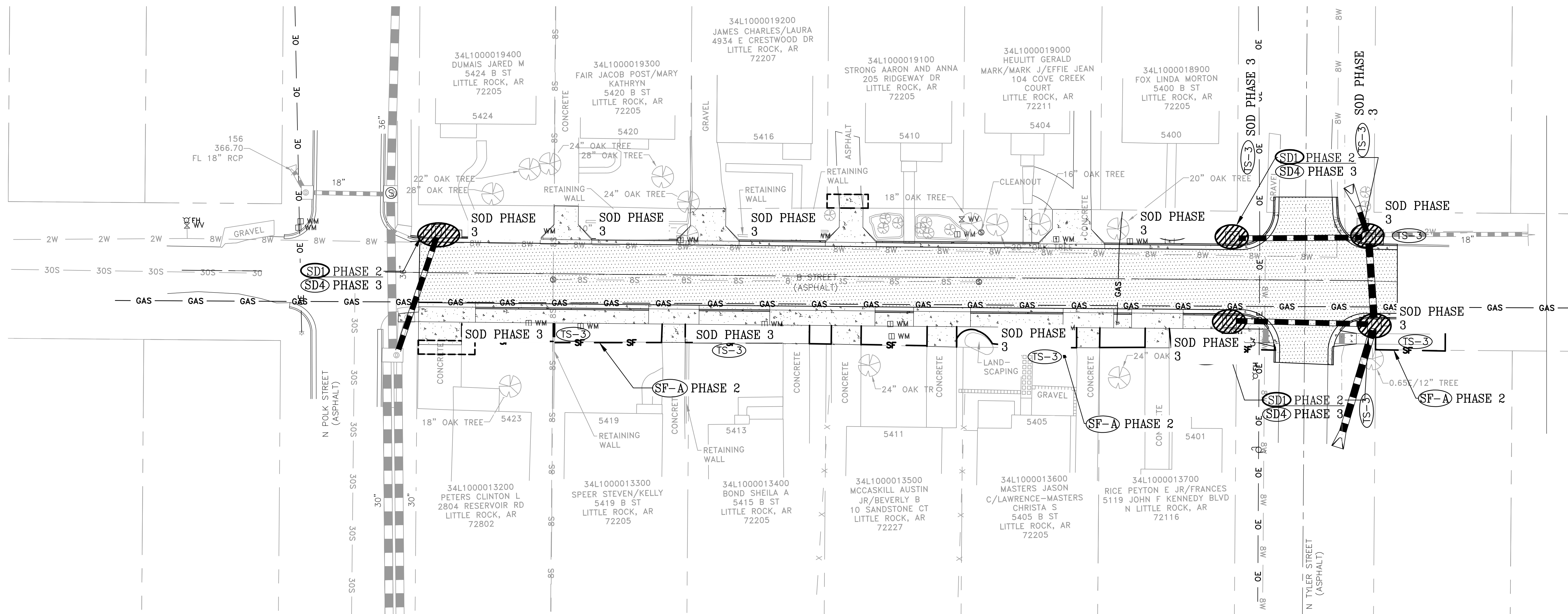


**DRAWN BY**  
**ATV**  
**DESIGNED**  
**NCH**  
**CHECKED**  
**VJW**  
**DATE**  
**07-19-2019**  
**SCALE**  
**1"=20' (22X34)**  
**PROJECT NO.**  
**03-17-ST-156**  
**SHEET NO.**  
**C8**

**PHASING LEGEND**  
 PHASE 2 (NEW DRAINAGE AND BASE COURSE IN PLACE)  
 PHASE 3 (PAVED, GRASS NOT YET ESTABLISHED)

REVISIONS	DATE

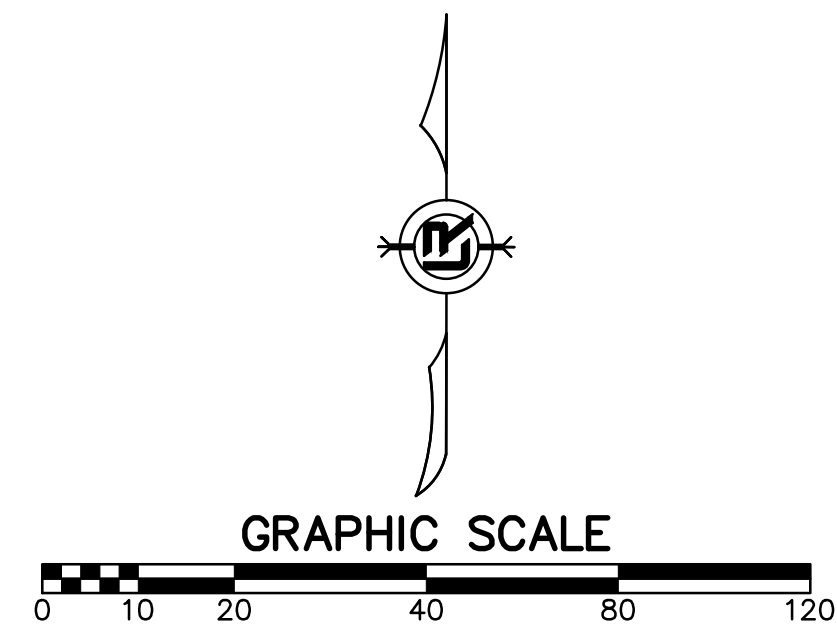
**CITY OF LITTLE ROCK, ARKANSAS**  
**B STREET RECONSTRUCTION**  
 EROSION CONTROL PLAN - PHASES 2 AND 3

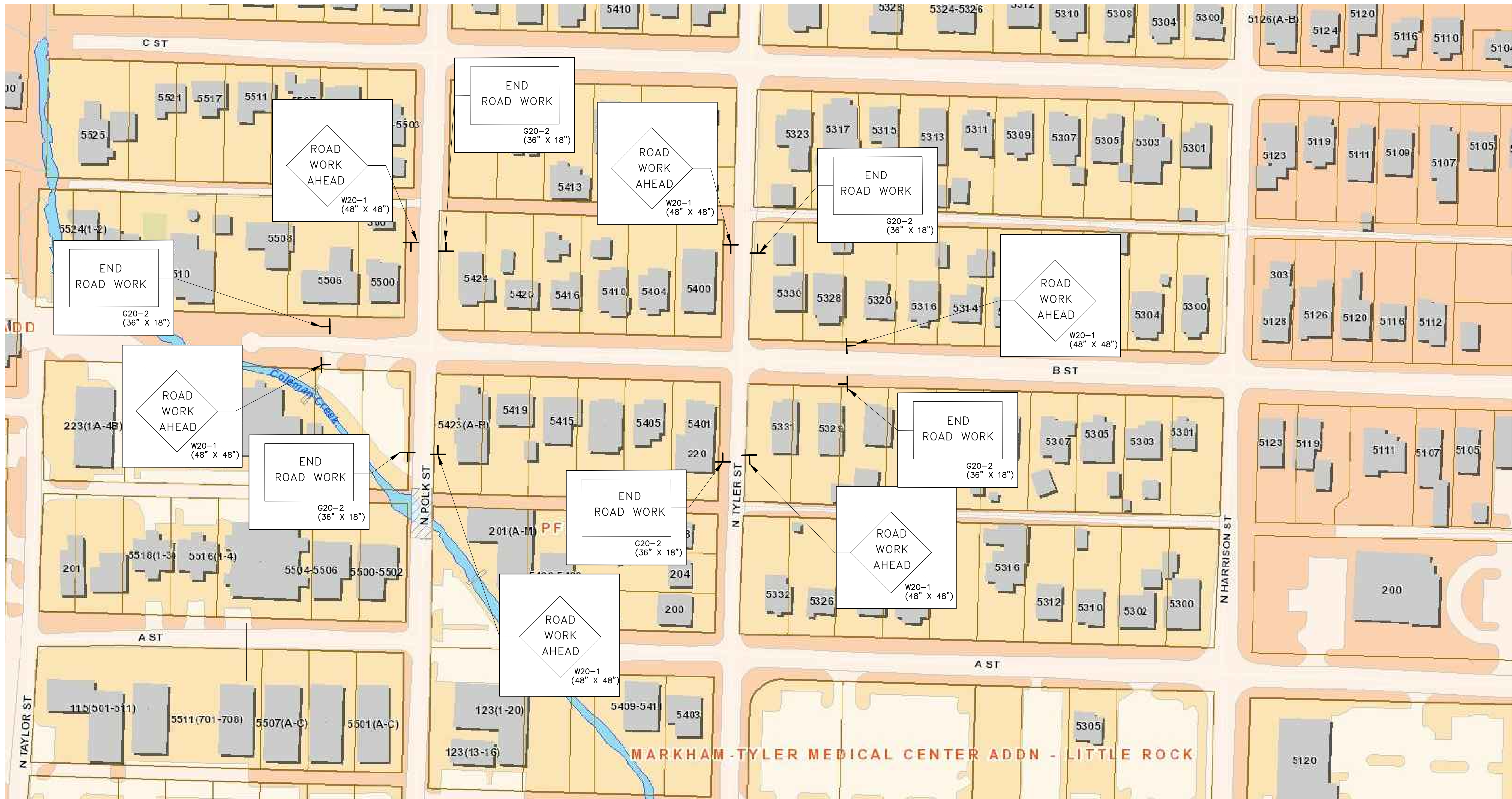


DEPARTMENT OF PUBLIC WORKS  
 CIVIL ENGINEERING  
 701 W. MARKHAM  
 LITTLE ROCK, ARKANSAS 72201



**DRAWN BY**  
 NHC & ATV  
**DESIGNED**  
 NHC & VJW  
**CHECKED**  
 VJW  
**DATE**  
 07-19-2019  
**SCALE**  
 1"=20' (22X34)  
**PROJECT NO.**  
 03-17-ST-156  
**SHEET NO.**  
 C9

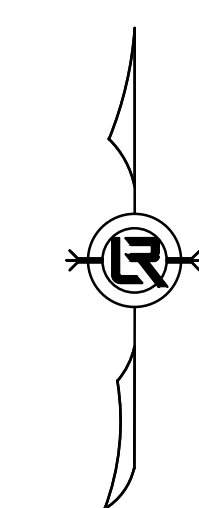




**MAINTENANCE OF TRAFFIC NOTES:**

WITHIN CONSTRUCTION LIMITS CONTRACTOR SHALL:

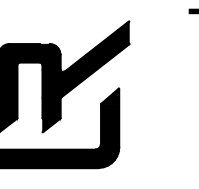
1. MAINTAIN CONTINUOUS VEHICULAR ACCESS TO ALL RESIDENCES.
2. PROVIDE, INSTALL, AND MAINTAIN (INCLUDING RELOCATION AS NEEDED) ALL TRAFFIC CONTROL DEVICES.



REVISIONS	DATE

CITY OF LITTLE ROCK, ARKANSAS  
**B STREET RECONSTRUCTION**  
 MAINTENANCE OF TRAFFIC PLAN

DEPARTMENT OF PUBLIC WORKS  
 CIVIL ENGINEERING  
 701 W. MARKHAM  
 LITTLE ROCK, ARKANSAS 72201



<b>DRAWN BY</b> NHC
<b>DESIGNED</b> NHC
<b>CHECKED</b> VJW
<b>DATE</b> 7-19-2019
<b>SCALE</b> N.T.S.
<b>PROJECT NO.</b> 03-17-ST-156
<b>SHEET NO.</b> C10