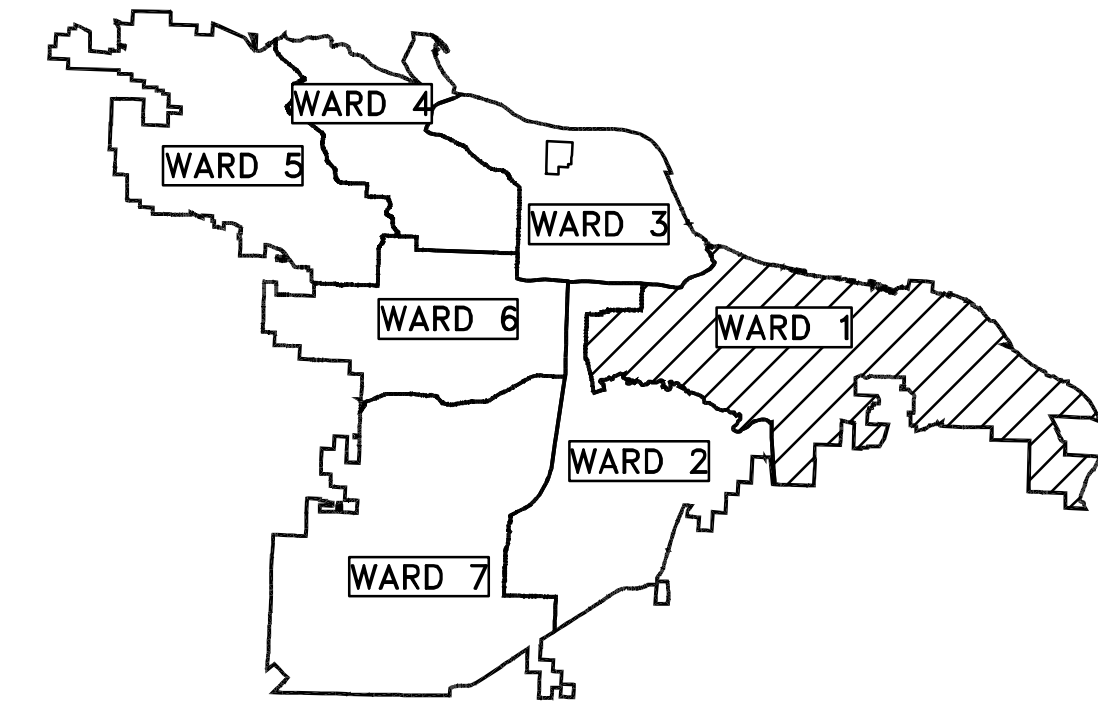


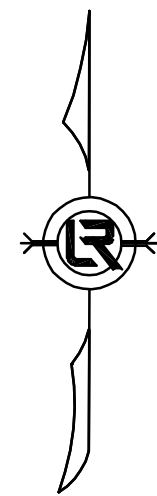
CLR PROJECT 01-16-DR-10

WARD 1

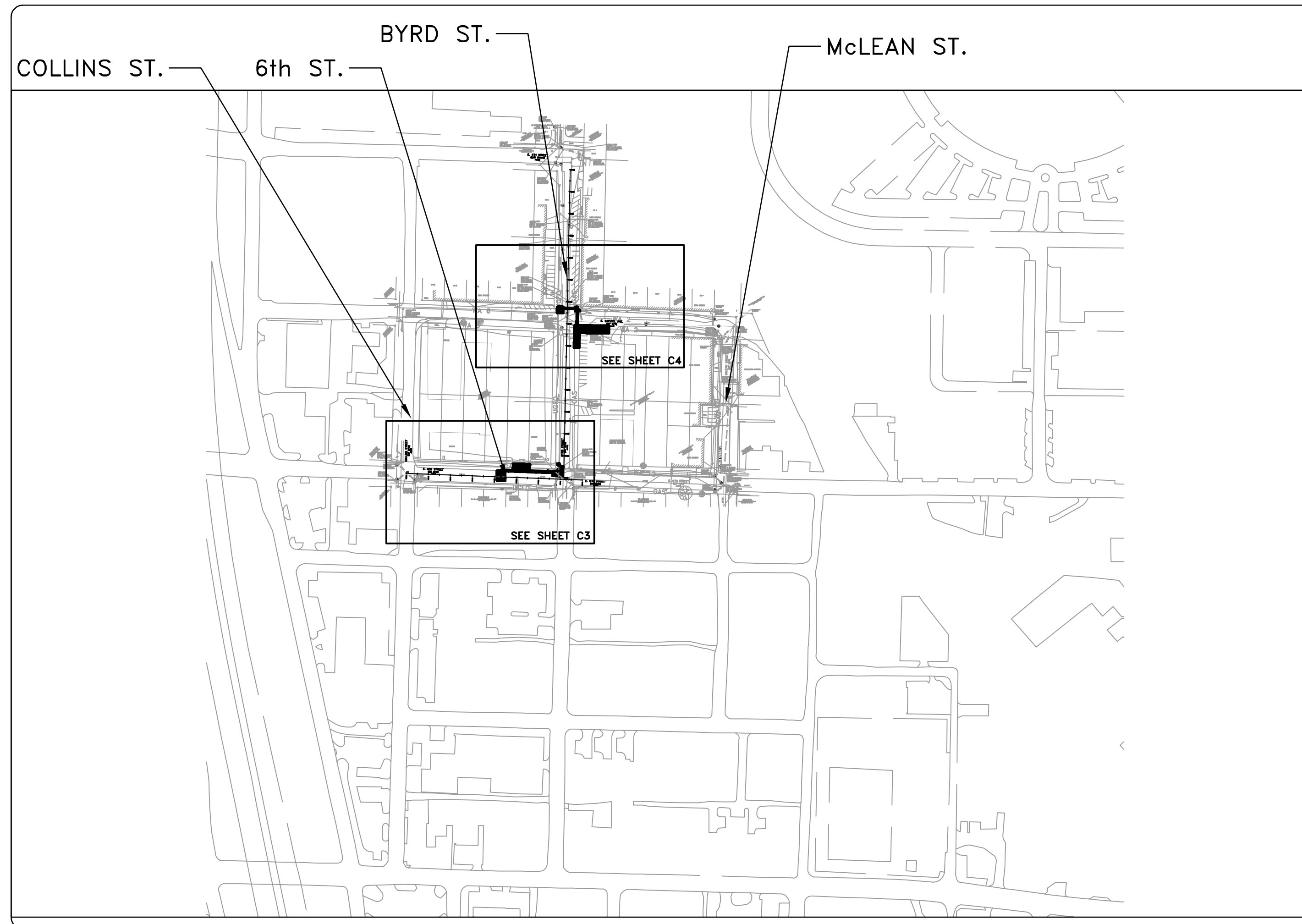
6th STREET DRAINAGE



PROJECT LOCATION - WARD 1



SCALE: 1"=200'



SHEET NO.	TITLE
C1	COVER SHEET
C2	LEGEND AND DETAIL SHEET
C3	6th ST.: COLLINS ST. - BYRD ST. PLAN SHEET
C4	BYRD ST. - EAST CAPITOL AVE. PLAN SHEET
C5	6th ST.: COLLINS ST. - BYRD ST. EROSION CONTROL SHEET
C6	6th ST. . MAINTENANCE OF TRAFFIC
C7	BYRD ST. MAINTENANCE OF TRAFFIC



2019-2021
BOND PROGRAM

DEPARTMENT OF PUBLIC WORKS
CIVIL ENGINEERING
701 WEST MARKHAM STREET
LITTLE ROCK, ARKANSAS 72201



Know what's below.
Call before you dig.



1300 east 6th Street little rock, ar 72202
501.372.2900 cromwell.com

REVISIONS DATE

CITY OF LITTLE ROCK, ARKANSAS
WARD 1 01-16-DR-10 6th STREET DRAINAGE

COVER SHEET

DEPARTMENT OF PUBLIC WORKS
CIVIL ENGINEERING
701 W. MARKHAM
LITTLE ROCK, ARKANSAS 72201



90% SUBMITTAL

DRAWN BY

MJT

DESIGNED

MJT

CHECKED

CGW

DATE

8-02-2019

SCALE

N.T.S.

PROJECT NO.

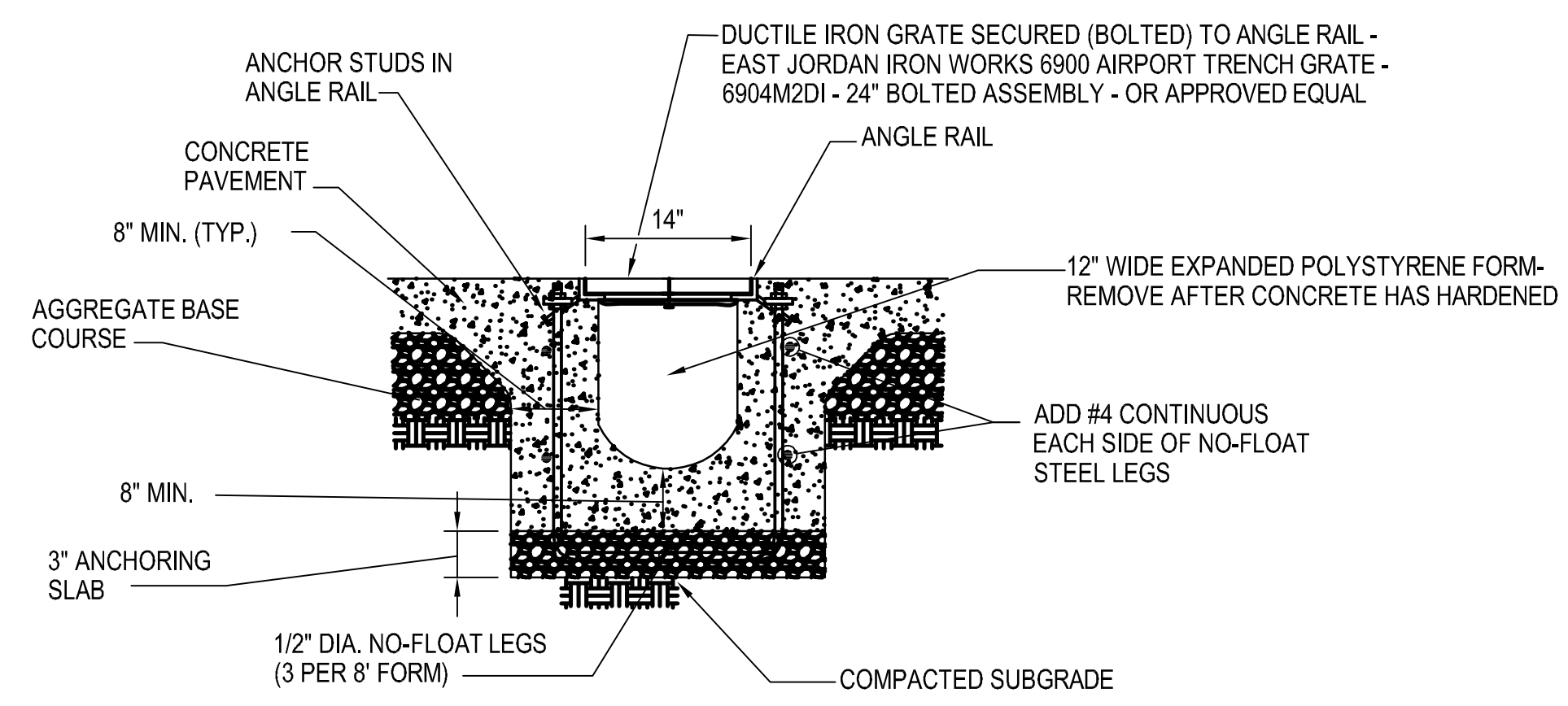
CLR #17201

SHEET NO.

C1

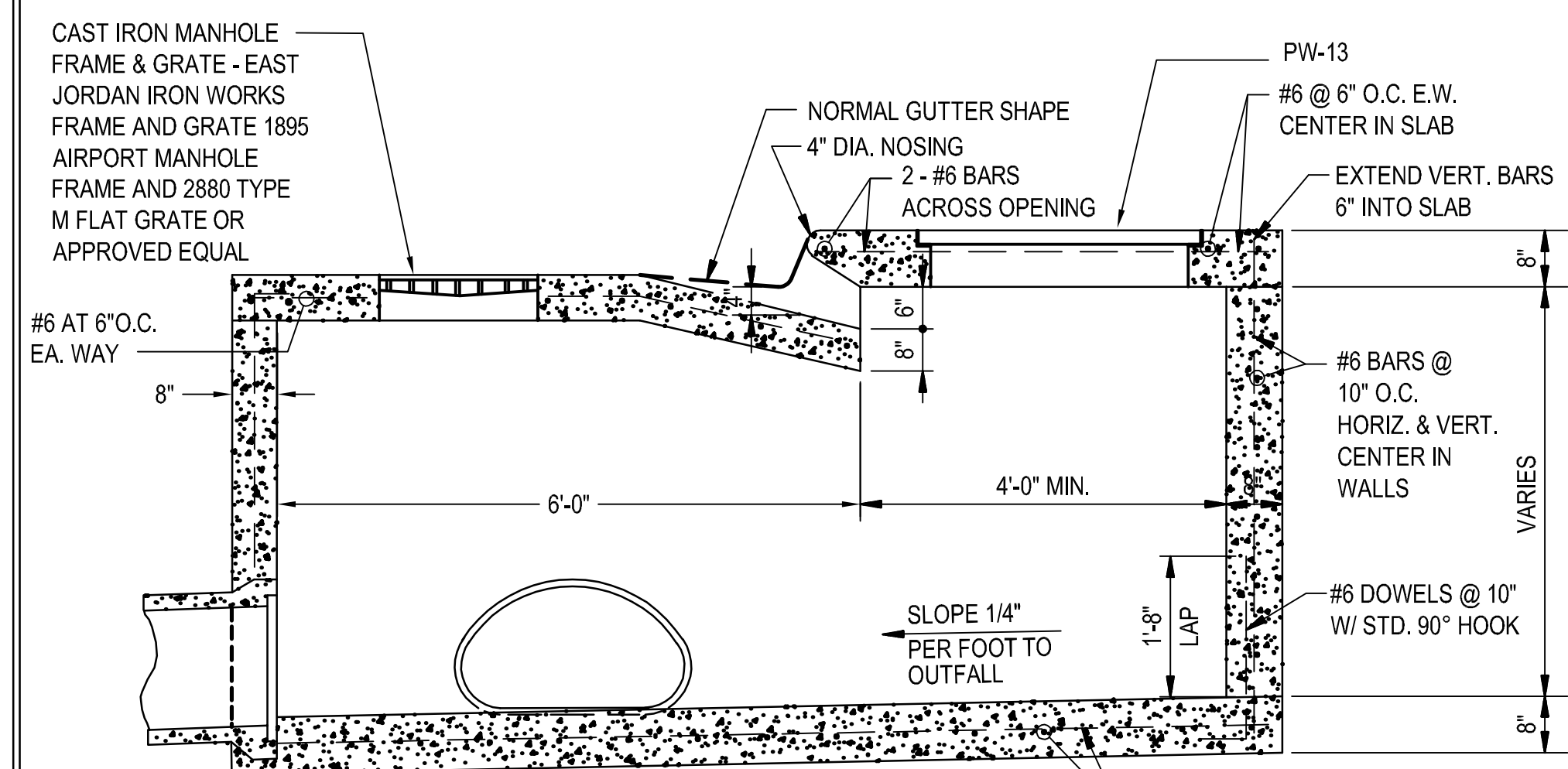
REVISIONS	DATE

CLR PROJECT #17201			
WARD 1 6TH Street Drainage 01-16-DR-10			
2-Aug-19			
ITEM #	ITEM DESCRIPTION	UNIT	QUANTITY
2.01	SITE PREPARATION	LS	1
3.40	TOPSOIL	CY	25
4.01	AGGREGATE BASE COURSE	TON	235
6.01	ACHM SURFACE COURSE	TON	50
7.06	CONCRETE DRIVEWAY (6" THICK), STANDARD FINISH	SF	800
8.03	CONCRETE CURB AND GUTTER (CLASS 3)	LF	152
10.01	JUNCTION BOX	EA	4
10.04	CURB INLET 5'	EA	1
10.14	10' WING EXTENSION	EA	1
13.18A	STORM DRAIN ARCH PIPE 13-1/2"x22" (CROSS DRAIN)	LF	78
13.24C	STORM DRAIN PIPE 24" (CROSS DRAIN)	LF	17
13.30C	STORM DRAIN PIPE 30" (SIDE DRAIN)	LF	126
13.64	TIE INTO EXISTING BOX CULVERT	EA	1
13.63	CONCRETE PLUG ON EXISTING STORM DRAIN	EA	5
14.01	SOLID SODDING	SY	200
16.01	MAINTENANCE OF TRAFFIC	LS	1
19.01	FINAL CLEANUP	LS	1
24.13	SILT FENCE - TYPE C (SFC)	LF	128
26.10	TRENCH SAFETY AND EXCAVATION	LS	5
719.04Y	THERMOPLASTIC PAVEMENT MARKING YELLOW 4"	LF	20
SP	TRENCH DRAIN	LF	88



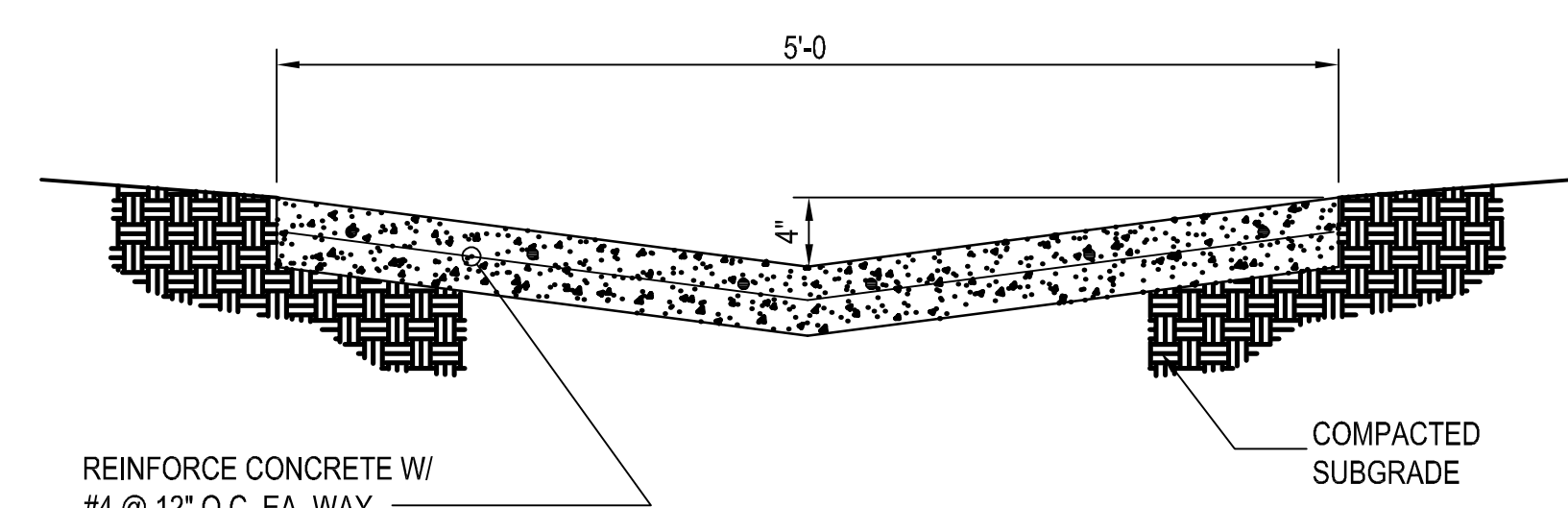
NOTES:
 1. TRENCH DRAIN SHALL BE CONSTRUCTED USING A PRE-MANUFACTURED FORMING SYSTEM (TRENCH FORMER BY ABT, INC. OR APPROVED EQUAL). CONSTRUCT IN ACCORDANCE WITH THE MANUFACTURER'S RECOMMENDATIONS.
 2. INSTALL ANGLE RAIL CLOSURE ON BOTH ENDS OF TRENCH DRAIN.
 3. TRENCH DRAIN SHALL SLOPE @ 1/8"/FT.

1 TRENCH DRAIN DETAIL
NOT TO SCALE



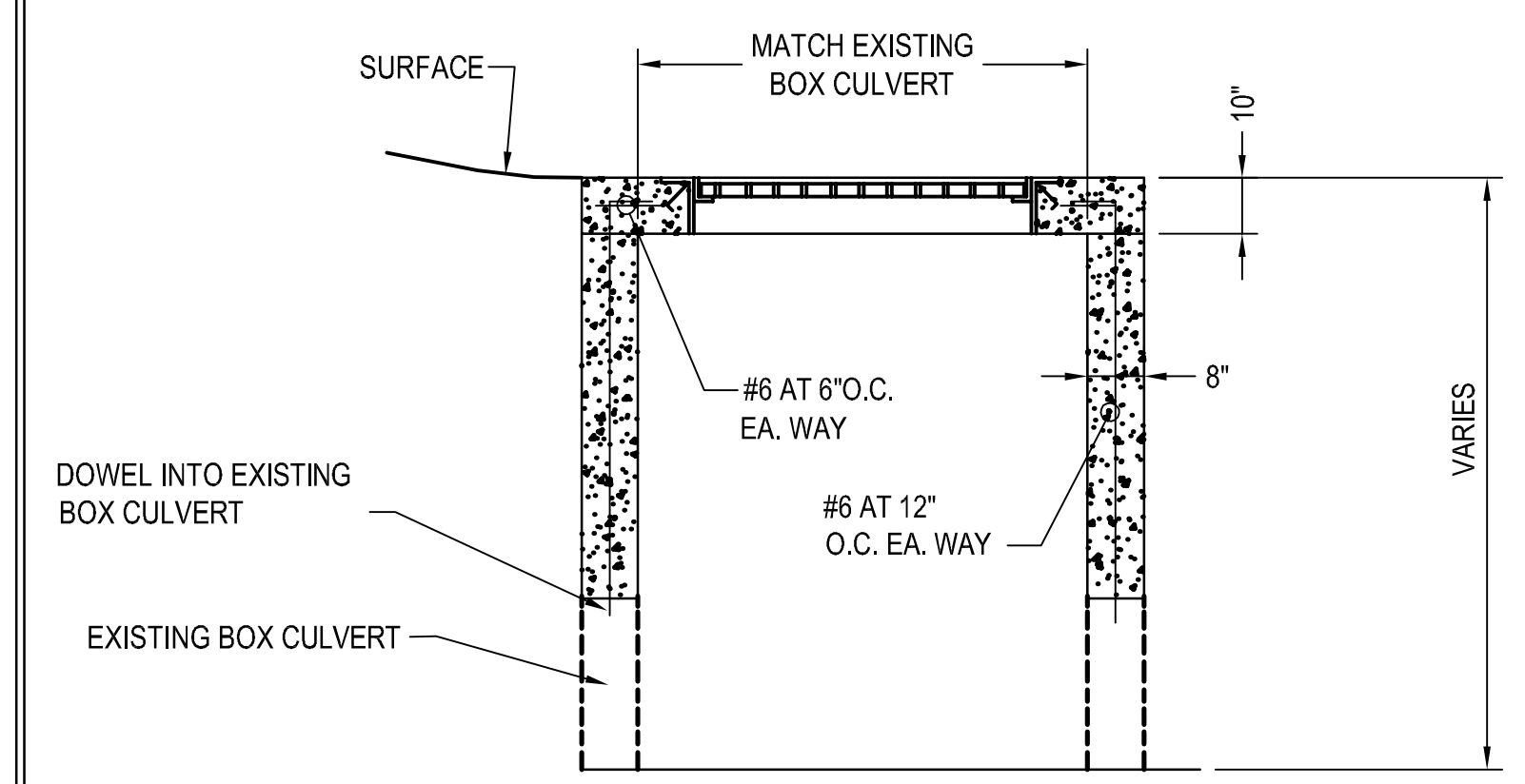
NOTE:
 COMBINATION CURB INLET/JUNCTION BOX SHALL MEET REQUIREMENTS OF PW-1A, PW-3, PW-10, PW-11, AND PW-13. ASSOCIATED CURB AND GUTTER TIE-IN SHALL MEET PW-29 REQUIREMENTS.

2 CURB INLET/JUNCTION BOX DETAIL
NOT TO SCALE



NOTE: CONCRETE SHALL HAVE A MINIMUM COMPRESSIVE STRENGTH OF 3,500 PSI AT 28 DAYS.

3 DRAINAGE SWALE DETAIL
NOT TO SCALE



4 NEW INLET DETAIL
NOT TO SCALE

EXISTING	PROPOSED
IRON ROD	PROPOSED CONTOUR
PK NAIL	PROPOSED SPOT ELEVATION
R.R. SPIKE	PROPOSED SPOT CURB ELEVATION
CONC. MONUMENT	STORM SEWER - PIPE
WATER VALVE	STORM SEWER - MITERED END SECTION
WATER METER	STORM SEWER - GRATE INLET
FIRE HYDRANT	STORM SEWER - JUNCTION BOX
GAS METER	STORM SEWER - FLARED END SECTION
GAS VALVE	STORM SEWER - HEADWALL
CLEAN-OUT	STORM SEWER - SINGLE WING
GUARD POST (BOLLARD)	STORM SEWER - DOUBLE WING
SIGN POST	STORM SEWER - 10' THROAT EXTENSION
BENCHMARK	STORM SEWER - AREA INLET
STORM SEWER MANHOLE	GRADE BREAK LINE
SANITARY SEWER MANHOLE	HIGH POINT
TELEPHONE MANHOLE	LOW POINT
ELECTRIC MANHOLE	CUT LINE
TELEPHONE BOX	FILL LINE
ELECTRIC BOX	SANITARY SEWER PIPE
CABLE BOX	SANITARY SEWER MANHOLE
UTILITY POLE	PROPOSED CURB
GUY WIRE	PROPOSED CONCRETE
LIGHT POLE	PROPOSED ASPHALT
POST OR POLE (TYPE AS NOTED)	CONSTRUCTION - ENTRANCE/EXIT
MAILBOX	CHECK DAM
DECIDUOUS TREE	DIVERSION BERM
EVERGREEN/CONIFEROUS TREE	DOWNDRAIN STRUCTURE - TEMPORARY
BUSH	ROCK DAM
PROPERTY LINE	SEDIMENT BARRIER - SILT FENCE
SETBACK LINE	SEDIMENT BARRIER - GRAVEL RING
EASEMENT LINE	SEDIMENT BARRIER - BLOCK & GRAVEL
CURB	SEDIMENT BARRIER - BLOCK
FENCE	TEMPORARY SEDIMENT BASIN
OVERHEAD ELECTRIC	SILT FENCE - TYPE A
OVERHEAD TELEPHONE	SILT FENCE - TYPE B
OVERHEAD CABLE	SILT FENCE - TYPE C
UNDERGROUND TELEPHONE	STORM DRAIN OUTLET PROTECTION
UNDERGROUND ELECTRIC	SURFACE ROUGHENING
UNDERGROUND CABLE	DISTURBED AREA STABILIZATION - TEMPORARY STABILIZATION
WATER LINE	DISTURBED AREA STABILIZATION - TEMPORARY GRASSING
SEWER LINE	DISTURBED AREA STABILIZATION - PERMANENT GRASSING
GAS LINE	MATting/BLANKETS
STORM SEWER/CULVERT	
EDGE OF WOODS	
CONTOUR LINE	

CITY OF LITTLE ROCK, ARKANSAS
 WARD 1 01-16-DR-10 6th STREET DRAINAGE
 LEGEND AND DETAIL SHEET

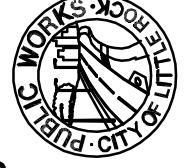
DEPARTMENT OF PUBLIC WORKS
 CIVIL ENGINEERING
 701 W. MARKHAM
 LITTLE ROCK, ARKANSAS 72201

90% SUBMITTAL

DRAWN BY
 MJT
 DESIGNED
 MJT
 CHECKED
 CGW
 DATE
 8-02-2019
 SCALE
 N.T.S.
 PROJECT NO.
 CLR #17201
 SHEET NO.
 C2

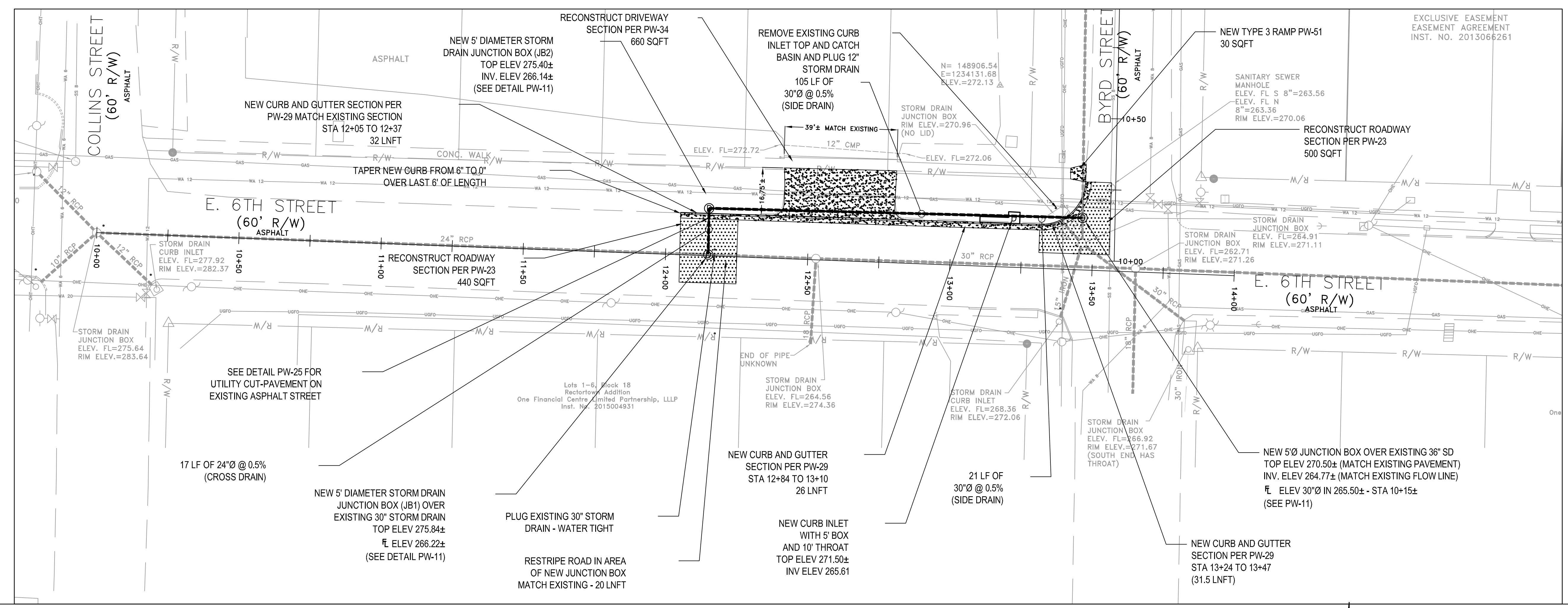
REVISIONS	DATE

CITY OF LITTLE ROCK, ARKANSAS
WARD 1 01-16-DR-10 6th STREET DRAINAGE
6th STREET: COLLINS STREET TO BYRD STREET PLAN SHEET

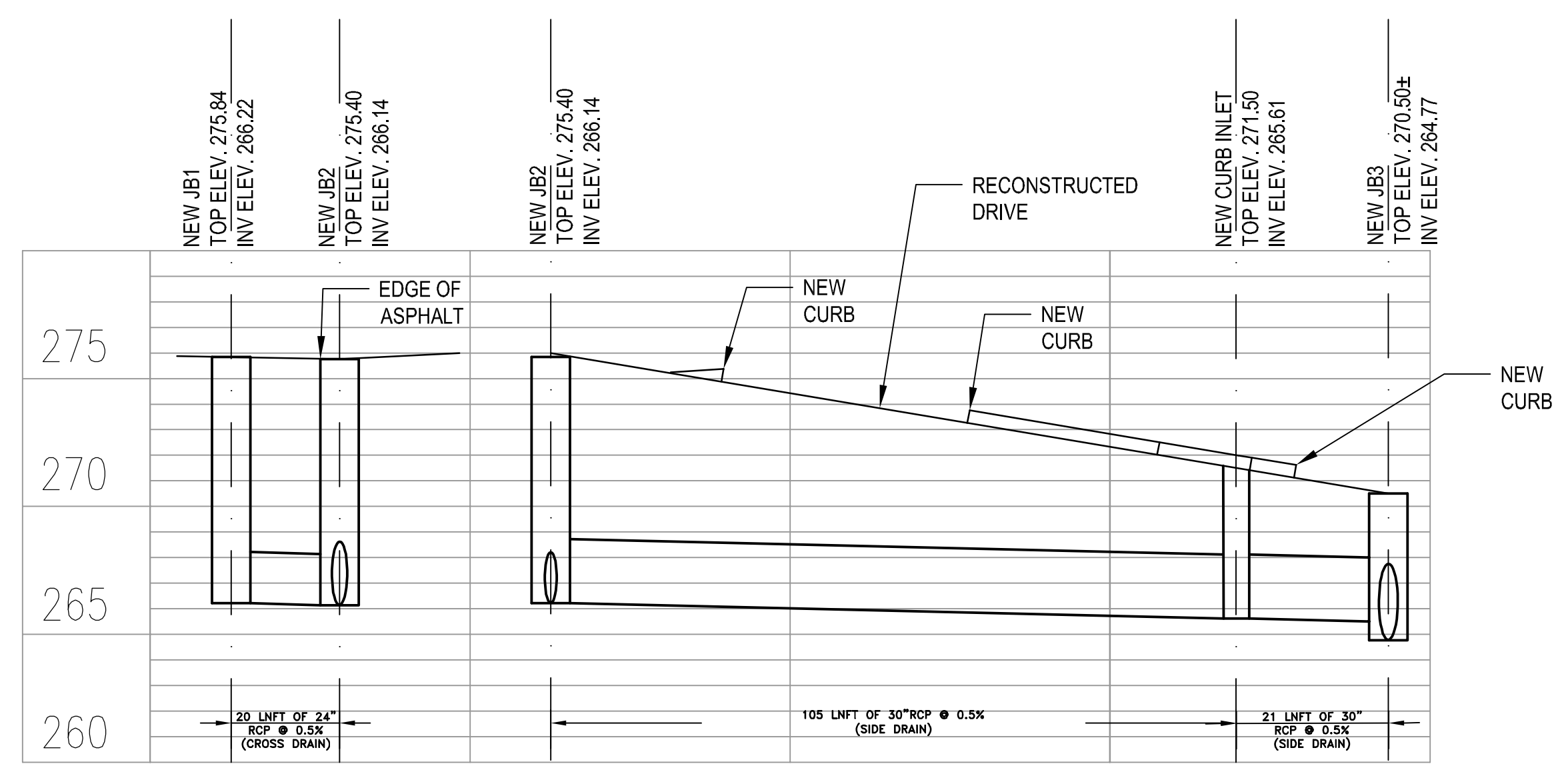

DEPARTMENT OF PUBLIC WORKS
CIVIL ENGINEERING
701 W. MARKHAM
LITTLE ROCK, ARKANSAS 72201

90% SUBMITTAL

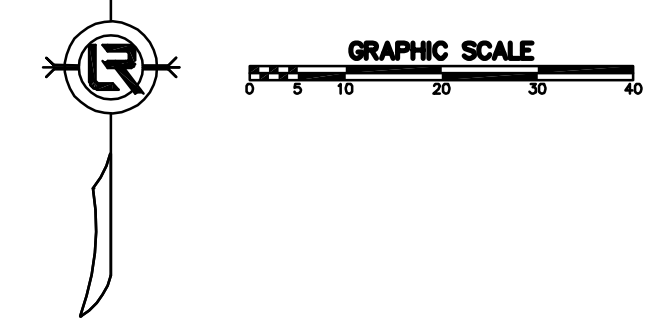
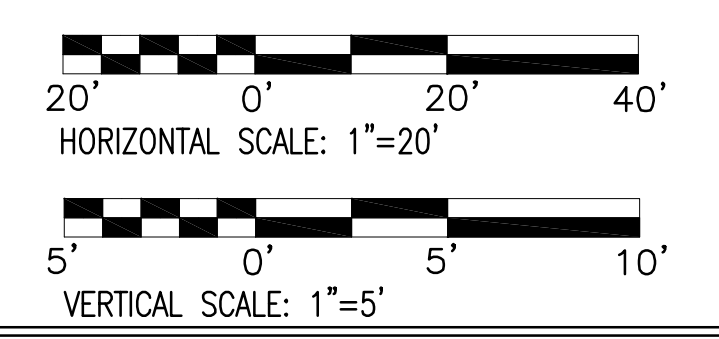
DRAWN BY
MJT
DESIGNED
MJT
CHECKED
CGW
DATE
8-02-2019
SCALE
20 SCALE
PROJECT NO.
CLR #17201
SHEET NO.
C3



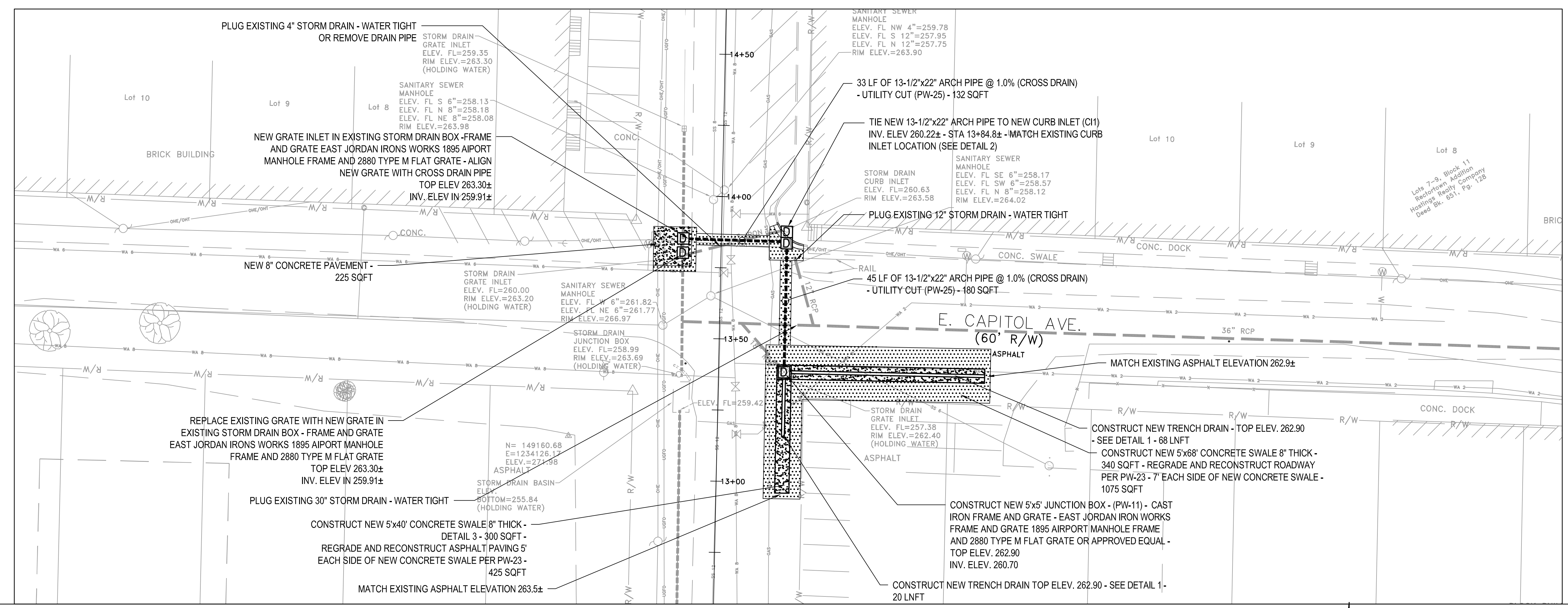
NOTE:
 1. REFERENCE DETAIL PW-1B FOR JUNCTION BOX WALL THICKNESS, DIAMETER, AND REINFORCING.



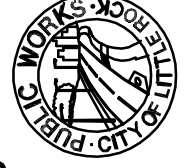
NEW STORM DRAIN PROFILE



REVISIONS	DATE

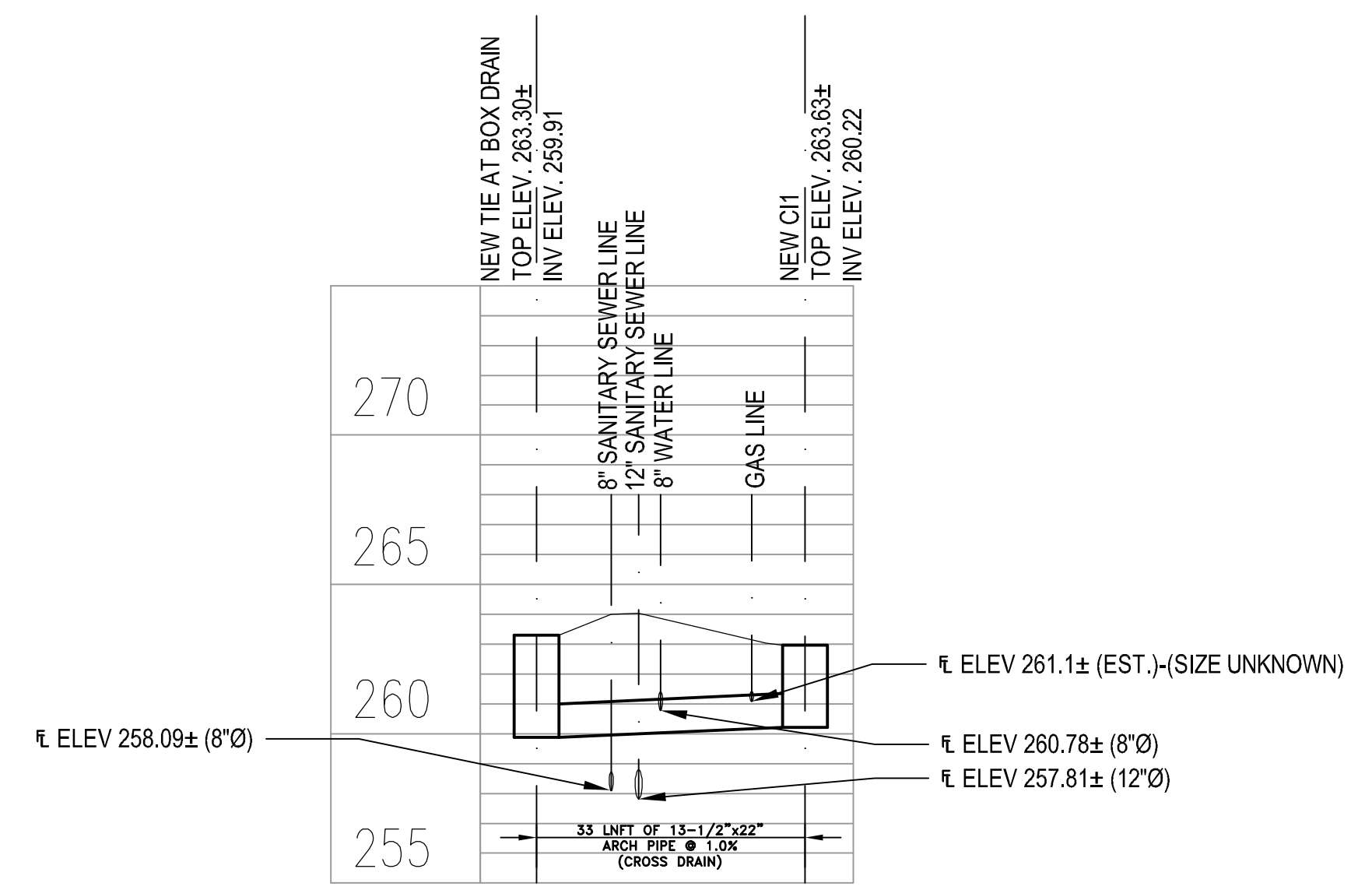


CITY OF LITTLE ROCK, ARKANSAS
WARD 1 01-16-DR-10 6th STREET DRAINAGE
BYRD STREET - E. CAPITOL AVE.
PLAN SHEET

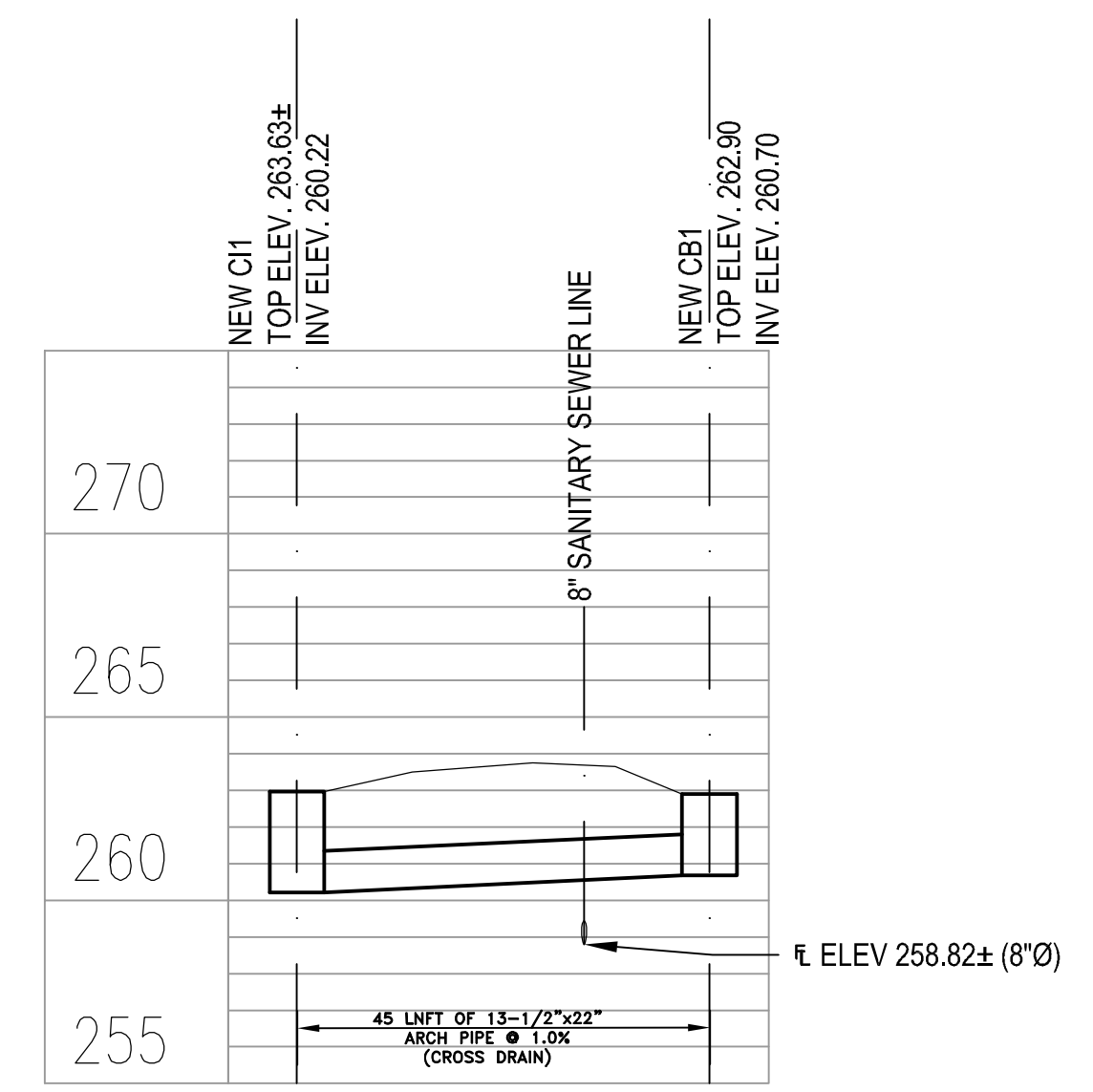
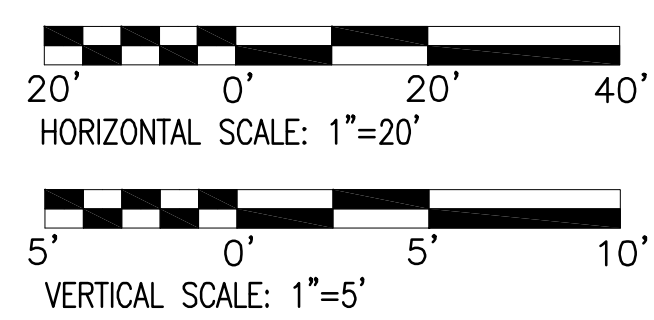

DEPARTMENT OF PUBLIC WORKS
CIVIL ENGINEERING
701 W. MARKHAM
LITTLE ROCK, ARKANSAS 72201

90% SUBMITTAL

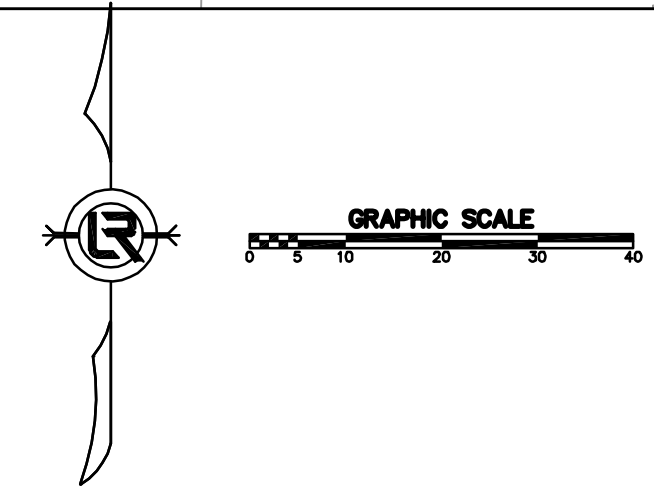
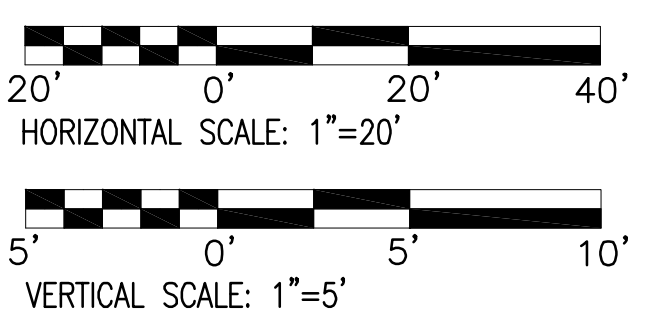
DRAWN BY
MJT
DESIGNED
MJT
CHECKED
CGW
DATE
8-02-2019
SCALE
20 SCALE
PROJECT NO.
CLR #17201
SHEET NO.
C4

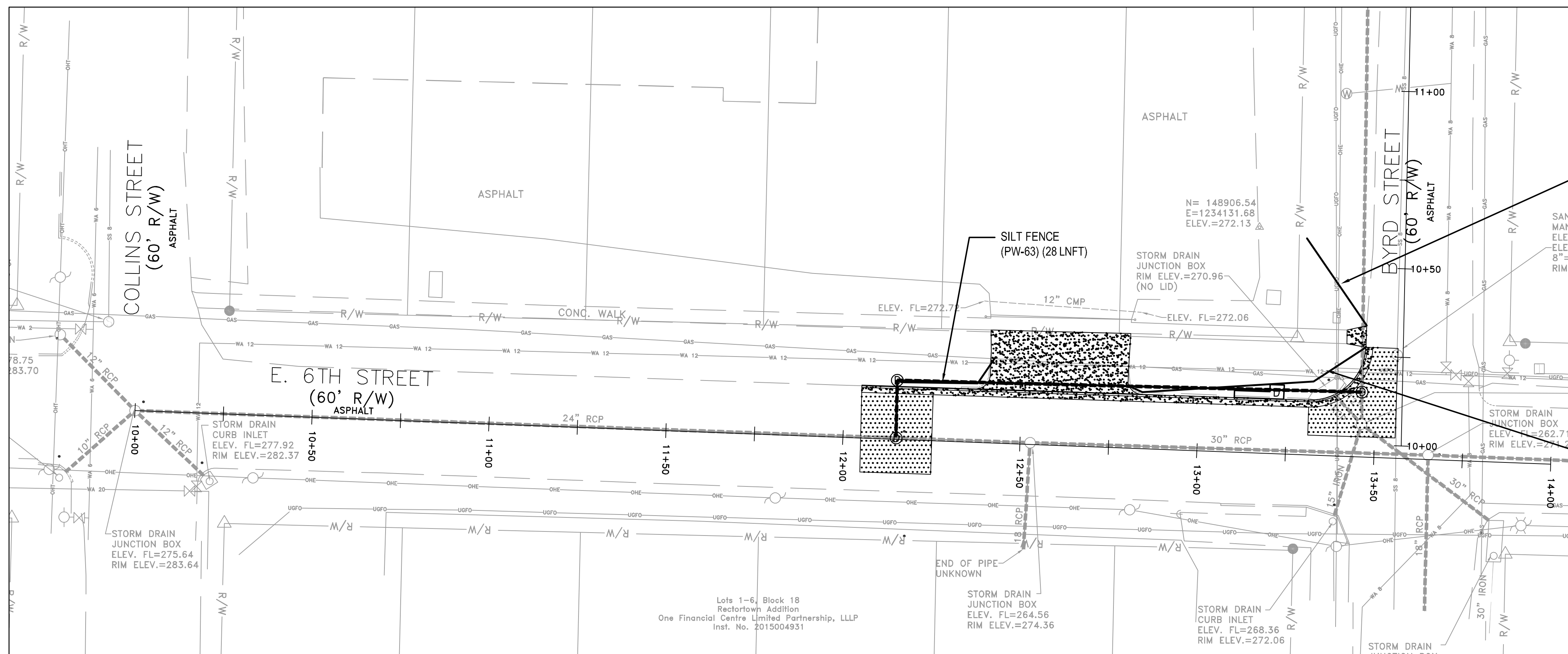


NEW STORM DRAIN PROFILE



NEW STORM DRAIN PROFILE





REVISIONS	DATE

CITY OF LITTLE ROCK, ARKANSAS
WARD 1 01-16-DR-10 6th STREET DRAINAGE
6th STREET: COLLINS STREET TO
BYRD STREET EROSION CONTROL SHEET


DEPARTMENT OF PUBLIC WORKS
 CIVIL ENGINEERING
 701 W. MARKHAM
 LITTLE ROCK, ARKANSAS 72201

90% SUBMITTAL

DRAWN BY
 MJT
DESIGNED
 MJT
CHECKED
 CGW
DATE
 8-02-2019
SCALE
 20 SCALE
PROJECT NO.
 CLR #17201
SHEET NO.
 C5

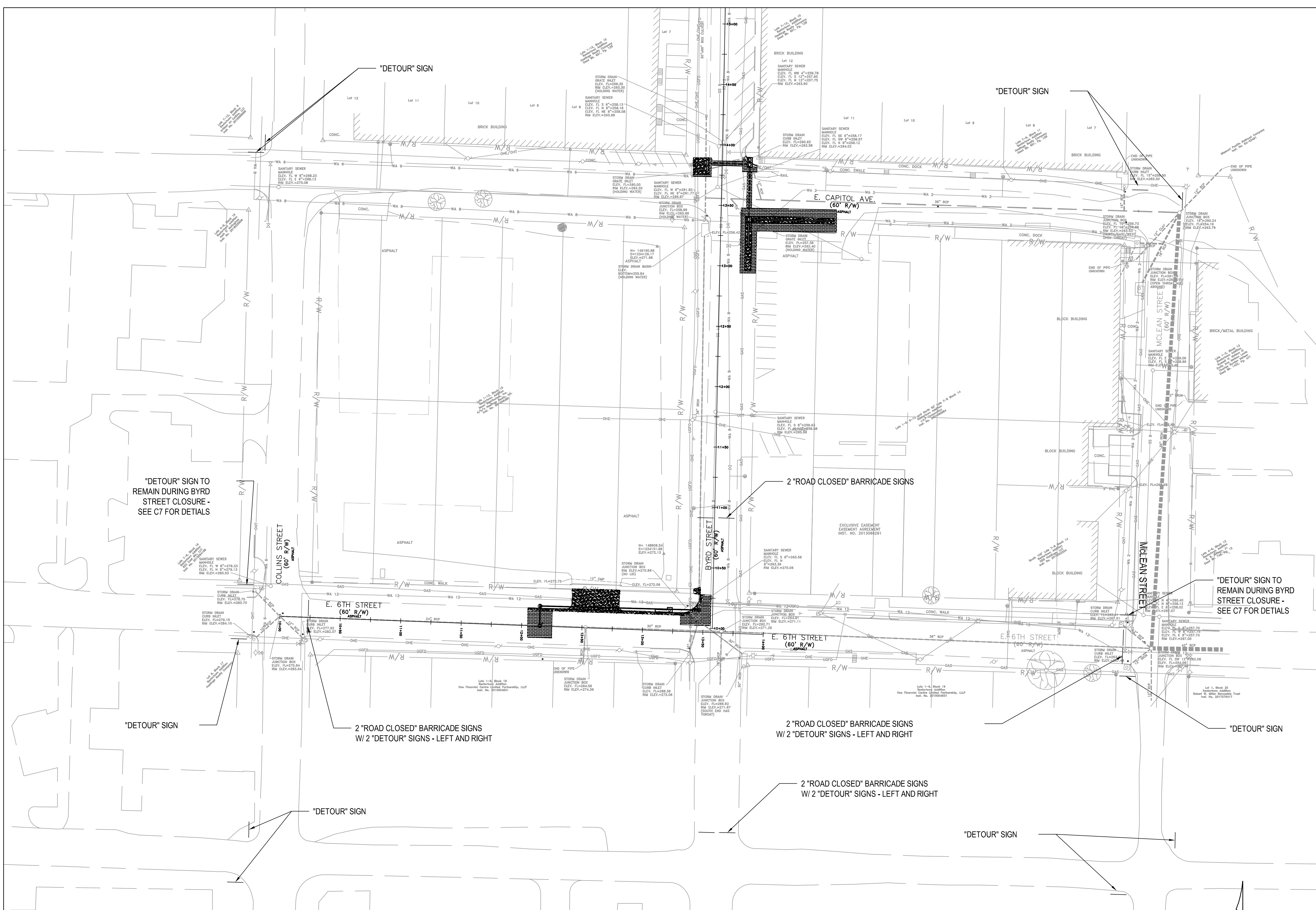
REVISIONS	DATE

CITY OF LITTLE ROCK, ARKANSAS
WARD 1 01-16-DR-10 6th STREET DRAINAGE
6th STREET MAINTENANCE OF TRAFFIC

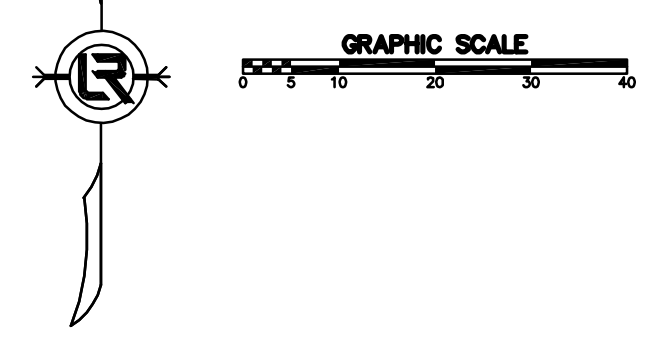

DEPARTMENT OF PUBLIC WORKS
CIVIL ENGINEERING
701 W. MARKHAM
LITTLE ROCK, ARKANSAS 72201


90% SUBMITTAL

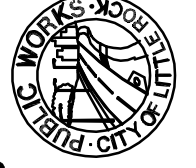
DRAWN BY
MJT
DESIGNED
MJT
CHECKED
CGW
DATE
8-02-2019
SCALE
20 SCALE
PROJECT NO.
CLR #17201
SHEET NO.
C6



- NOTE:
- REFERENCE ARDOT STANDARD TRAFFIC CONTROLS FOR HIGHWAY CONSTRUCTION STANDARD DRAWING TC-1 FOR NOTES AND DETAILS.
 - USE TYPE III BARRICADE FOR "ROAD CLOSED" SIGNS.
 - MOUNT DETOUR SIGNS TO BARRICADE WHEN "ROAD CLOSED" AND "DETOUR" SIGNS ARE SHOWN TOGETHER.
 - "ROAD CLOSED" - USE RII-2
 - "DETOUR" - USE M4-10 LEFT AND RIGHT
 - MINIMIZE ROAD CLOSURES - CONSULT WITH CITY OF LITTLE ROCK FOR ROAD CLOSURE TIMING AND DURATION.



CITY OF LITTLE ROCK, ARKANSAS
WARD 1 01-16-DR-10 6th STREET DRAINAGE
BYRD STREET MAINTENANCE OF TRAFFIC


DEPARTMENT OF PUBLIC WORKS
CIVIL ENGINEERING
701 W. MARKHAM
LITTLE ROCK, ARKANSAS 72201

90% SUBMITTAL

DRAWN BY
MJT

DESIGNED
MJT

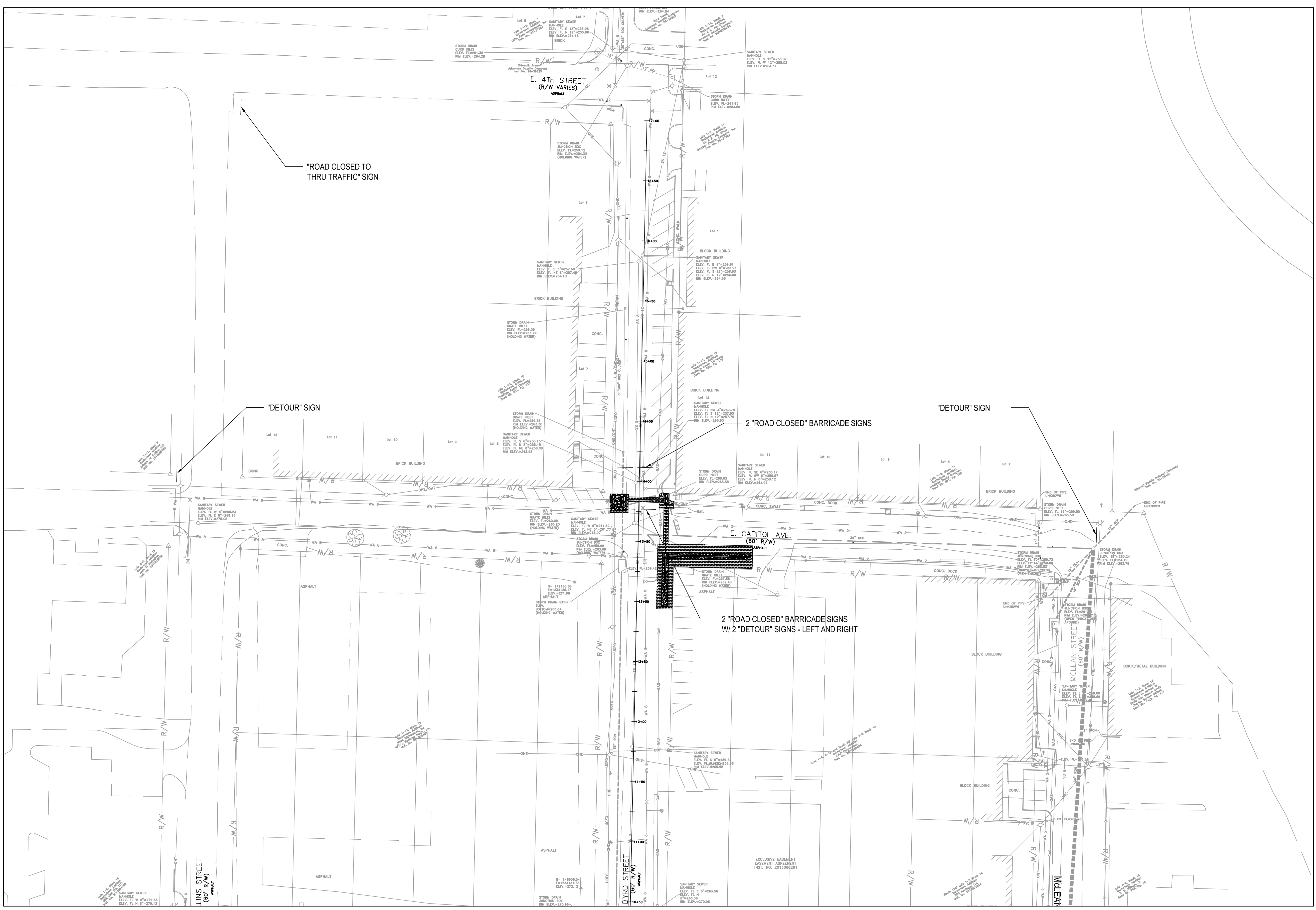
CHECKED
CGW

DATE
8-02-2019

SCALE
20 SCALE

PROJECT NO.
CLR #17201

SHEET NO.
C7



- NOTE:
- REFERENCE ARDOT STANDARD TRAFFIC CONTROLS FOR HIGHWAY CONSTRUCTION STANDARD DRAWING TC-1 FOR NOTES AND DETAILS.
 - USE TYPE III BARRICADE FOR "ROAD CLOSED" SIGNS.
 - MOUNT DETOUR SIGNS TO BARRICADE WHEN "ROAD CLOSED" AND "DETOUR" SIGNS ARE SHOWN TOGETHER.
 - "ROAD CLOSED" - USE RII-2
 - "DETOUR" - USE M4-10 LEFT AND RIGHT
 - "ROAD CLOSED TO THRU TRAFFIC" - USE RII-4
 - SEE SHEET C6 FOR SIGNS THAT ARE TO REMAIN DURING BYRD STREET CLOSURE.

