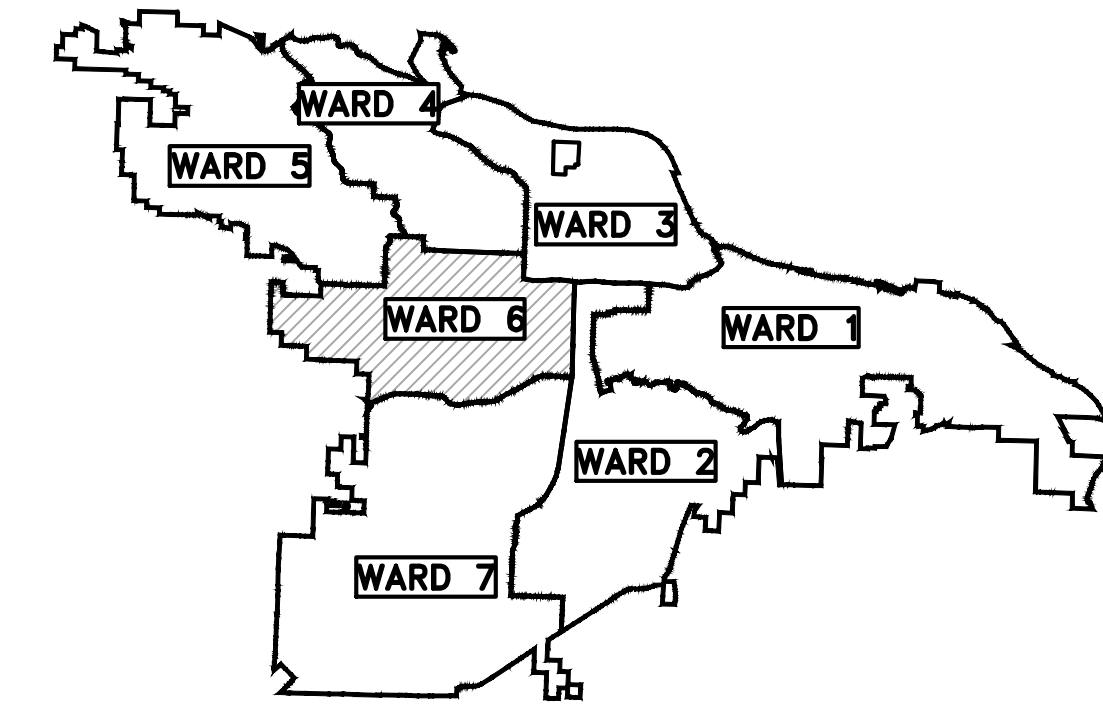
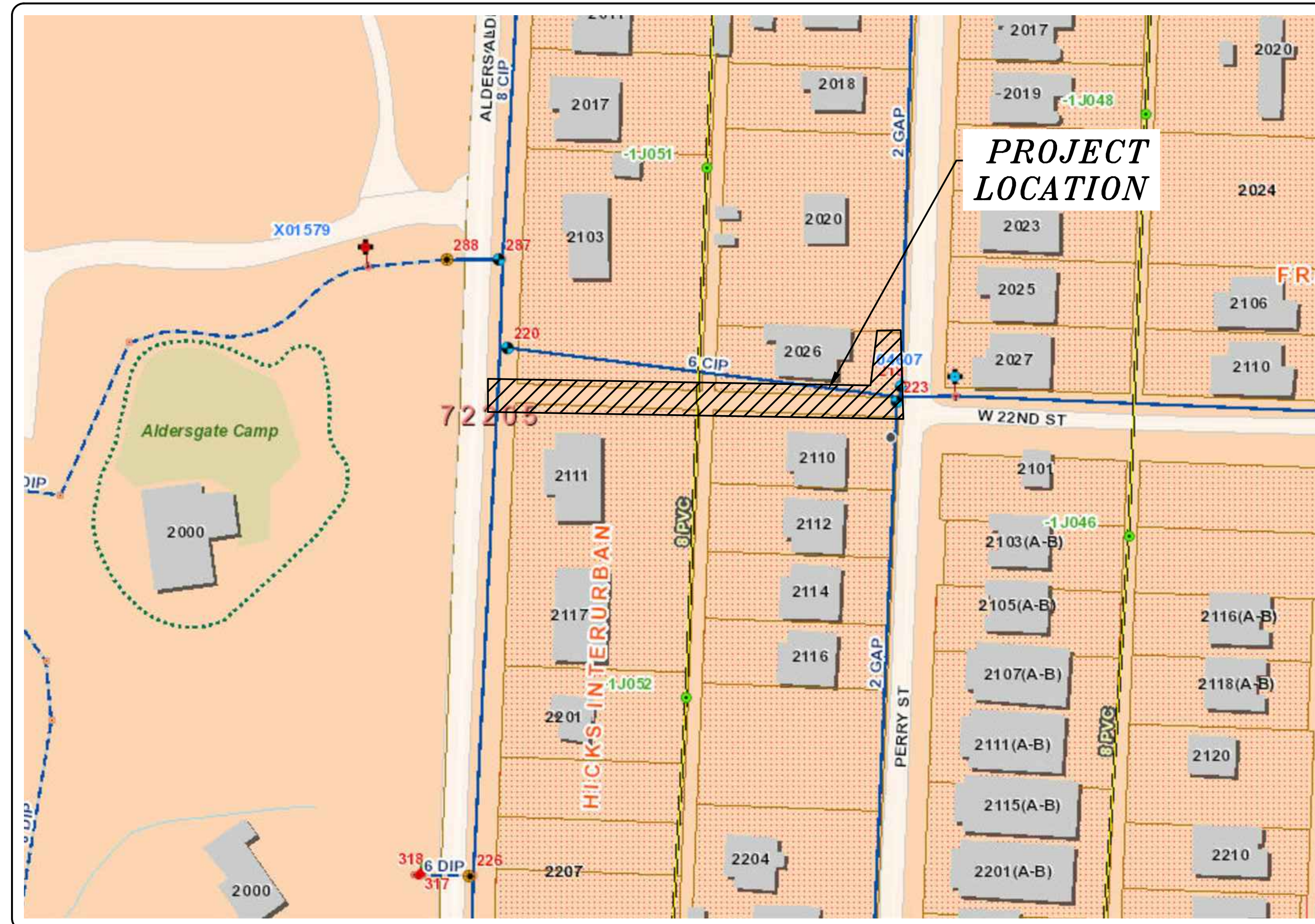


CLR PROJECT # 06-16-DR-234

22ND STREET ROW DRAIN IMPROVEMENTS

22ND STREET ROW (W. OF PERRY ST.)

90% PLANS



PROJECT LOCATION - WARD 6

SHEET NO.	TITLE
C1	COVER SHEET
C2	LEGEND / GENERAL NOTES
C3	ROW DRAIN PLAN & PROFILE SHEET 1 OF 1
C4	EROSION CONTROL PLAN



2019-2021
BOND PROGRAM

DEPARTMENT OF PUBLIC WORKS
CIVIL ENGINEERING
701 WEST MARKHAM STREET
LITTLE ROCK, ARKANSAS 72201



Know what's below.
Call before you dig.



SMITH AND GOODSON
- PLLC

CIVIL ENGINEERING AND LAND SURVEYING
7509 CANTRELL ROAD, SUITE 227
LITTLE ROCK, ARKANSAS 72207
501-414-8498

PROJECT ENGINEER:

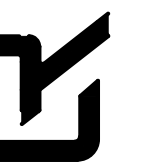
JESS GRIFFIN, PE
(501) 690-3456 - JGGRIFINPE@GMAIL.COM

REVISIONS	DATE

CITY OF LITTLE ROCK, ARKANSAS
22ND STREET ROW DRAIN IMPROVEMENTS

COVER SHEET
90% PLANS

DEPARTMENT OF PUBLIC WORKS
CIVIL ENGINEERING
701 W. MARKHAM
LITTLE ROCK, ARKANSAS 72201



DRAWN BY
J. GRIFFIN
DESIGNED
J. GRIFFIN
CHECKED
A. SMITH
DATE
07/02/2019
SCALE
NTS

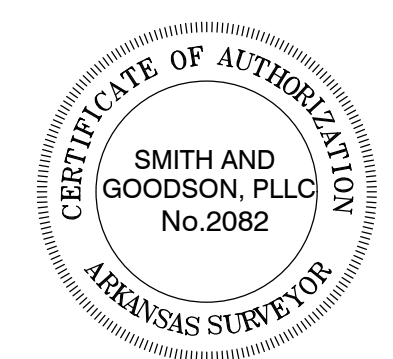
PROJECT NO.
CLR # 06-16-DR-234
SHEET NO.

C1

Item No.	Item Description	Quantity	Unit
2.01	SITE PREPARATION	1	LS
3.01	UNCLASSIFIED EXCAVATION	50	CY
3.06	BORROW MATERIAL	45	CY
3.40	TOPSOIL	15	CY
10.01	JUNCTION BOX	2	EA
13.15C	STORM DRAIN PIPE, SIDE DRAIN	4	LF
13.18C	STORM DRAIN PIPE, SIDE DRAIN	157	LF
14.01	SOLID SODDING, MATCH EX. TYPE (INCLUDES 4" OF TOPSOIL)	400	SY
18.45	RIPRAP	35	CY
19.01	FINAL CLEANUP	1	LS
24.02	CHECK DAM (CD)	5	CY
24.06	SEDIMENT BARRIER, SILT FENCE (SD1)	2	EA
24.11	SILT FENCE - TYPE A (SFA)	475	LF
24.14	STORM DRAIN OUTLET PROTECTION (ST)	2	EA
24.20	TEMPORARY SEEDING	0.25	AC
606.15C	FLARED END SECTION, SIDE DRAIN	1	EA
606.18C	FLARED END SECTION, SIDE DRAIN	1	EA

EXISTING PROPOSED

- | | | | |
|------------------------------|----------|---|--|
| IRON ROD | ○ IR | PROPOSED CONTOUR | |
| PK NAIL | ○ PK | PROPOSED SPOT ELEVATION | |
| R.R. SPIKE | ○ RR(Sp) | PROPOSED SPOT CURB ELEVATION | |
| CONC. MONUMENT | □ CM | STORM SEWER - PIPE | |
| WATER VALVE | ⊗ WV | STORM SEWER - MITERED END SECTION | |
| WATER METER | □ WM | STORM SEWER - GRATE INLET | |
| FIRE HYDRANT | ⊕ FH | STORM SEWER - JUNCTION BOX | |
| GAS METER | ⊕ GM | STORM SEWER - FLARED END SECTION | |
| GAS VALVE | ⊕ GV | STORM SEWER - HEADWALL | |
| CLEAN-OUT | ○ CO | STORM SEWER - SINGLE WING | |
| GUARD POST (BOLLARD) | • GP | STORM SEWER - DOUBLE WING | |
| SIGN POST | | STORM SEWER - AREA INLET | |
| BENCHMARK | | GRADE BREAK LINE | |
| STORM SEWER MANHOLE | ⊕ | HIGH POINT | |
| SANITARY SEWER MANHOLE | ⊕ | LOW POINT | |
| TELEPHONE MANHOLE | ⊕ | CUT LINE | |
| ELECTRIC MANHOLE | ⊕ | FILL LINE | |
| TELEPHONE BOX | ⊕ | SANITARY SEWER PIPE | |
| ELECTRIC BOX | ⊕ | SANITARY SEWER MANHOLE | |
| CABLE BOX | ⊕ | PROPOSED CURB | |
| UTILITY POLE | ⊕ | PROPOSED CONCRETE | |
| GUY WIRE | ⊕ | CONSTRUCTION - ENTRANCE/EXIT | |
| LIGHT POLE | ⊕ | CHECK DAM | |
| POST OR POLE (TYPE AS NOTED) | ⊕ | DIVERSION BERM | |
| MAILBOX | ⊕ | DOWNDRAIN STRUCTURE - TEMPORARY | |
| DECIDUOUS TREE | | ROCK DAM | |
| EVERGREEN/CONIFEROUS TREE | | SEDIMENT BARRIER - SILT FENCE | |
| BUSH | | SEDIMENT BARRIER - GRAVEL RING | |
| PROPERTY LINE | | SEDIMENT BARRIER - BLOCK & GRAVEL | |
| SETBACK LINE | | SEDIMENT BARRIER - BLOCK | |
| EASEMENT LINE | | TEMPORARY SEDIMENT BASIN | |
| CURB | | SILT FENCE - TYPE A | |
| FENCE | | SILT FENCE - TYPE B | |
| OVERHEAD ELECTRIC | | SILT FENCE - TYPE C | |
| OVERHEAD TELEPHONE | | STORM DRAIN OUTLET PROTECTION | |
| OVERHEAD CABLE | | SURFACE ROUGHENING | |
| UNDERGROUND TELEPHONE | | DISTURBED AREA STABILIZATION -TEMPORARY STABILIZATION | |
| UNDERGROUND ELECTRIC | | DISTURBED AREA STABILIZATION -TEMPORARY GRASSING | |
| UNDERGROUND CABLE | | DISTURBED AREA STABILIZATION -PERMANENT GRASSING | |
| WATER LINE | | MATting/BLANKETS | |
| SEWER LINE | | | |
| GAS LINE | | | |
| STORM SEWER/CULVERT | | | |
| EDGE OF WOODS | | | |
| CONTOUR LINE | | | |



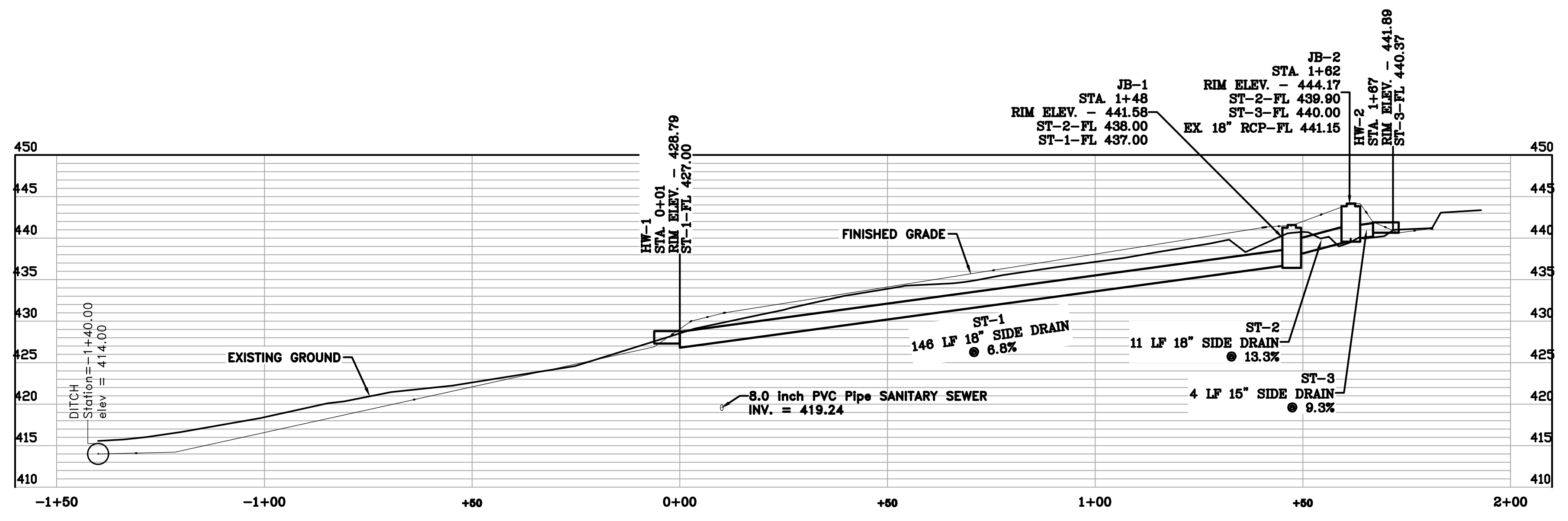
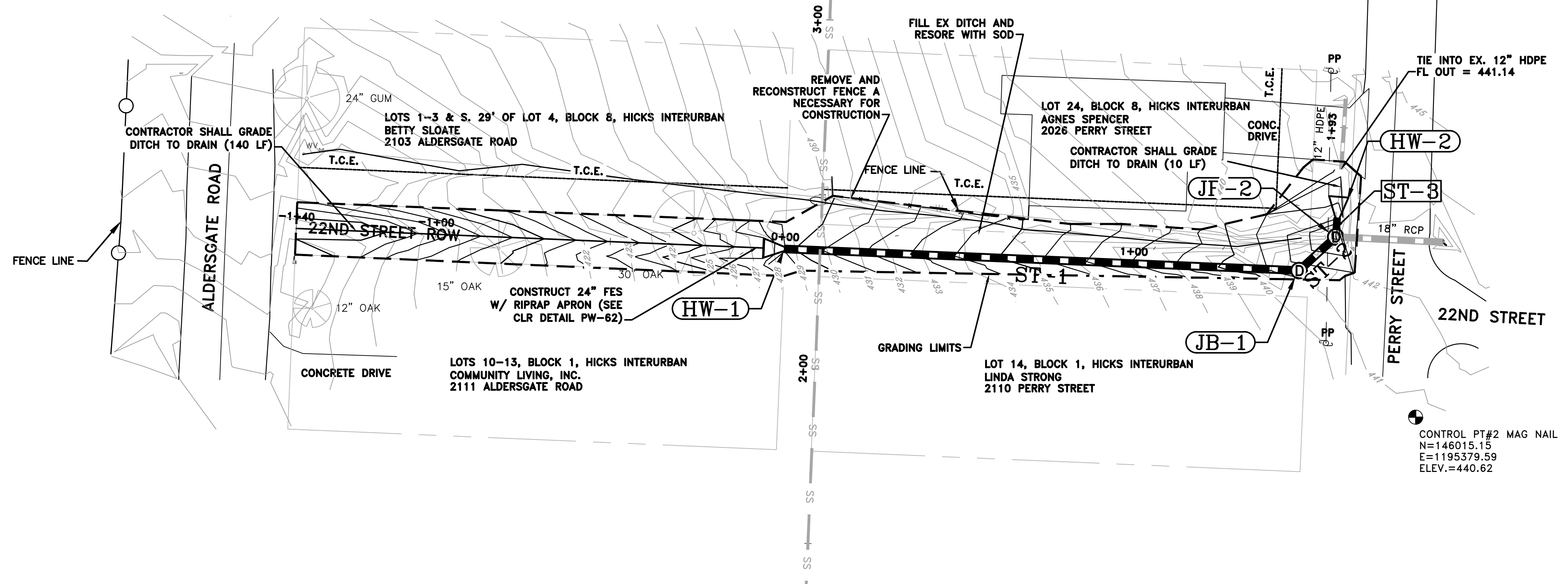
REVISIONS	DATE

CITY OF LITTLE ROCK, ARKANSAS
 22ND STREET ROW DRAIN IMPROVEMENTS
 LEGEND / GENERAL NOTES
 90% PLANS

DEPARTMENT OF PUBLIC WORKS
 CIVIL ENGINEERING
 701 W. MARKHAM
 LITTLE ROCK, ARKANSAS 72201



DRAWN BY
 J. GRIFFIN
 DESIGNED
 J. GRIFFIN
 CHECKED
 A. SMITH
 DATE
 07/02/2019
 SCALE
 NTS
 PROJECT NO.
 CLR # 06-16-DR-234
 SHEET NO.
 C2



REVISIONS	DATE

CITY OF LITTLE ROCK, ARKANSAS

22ND STREET ROW DRAIN IMPROVEMENTS

ROW DRAIN PLAN & PROFILE SHEET 1 OF 1

90% PLANS

DEPARTMENT OF PUBLIC WORKS

CIVIL ENGINEERING

701 W. MARKHAM

LITTLE ROCK, ARKANSAS 72201

NOT FOR CONSTRUCTION

ARKANSAS REGISTERED PROFESSIONAL ENGINEER No. 17170

DRAWN BY
J. GRIFFIN

DESIGNED
J. GRIFFIN

CHECKED
A. SMITH

DATE
07/02/2019

SCALE
NTS

PROJECT NO.
CLR # 06-16-DR-234

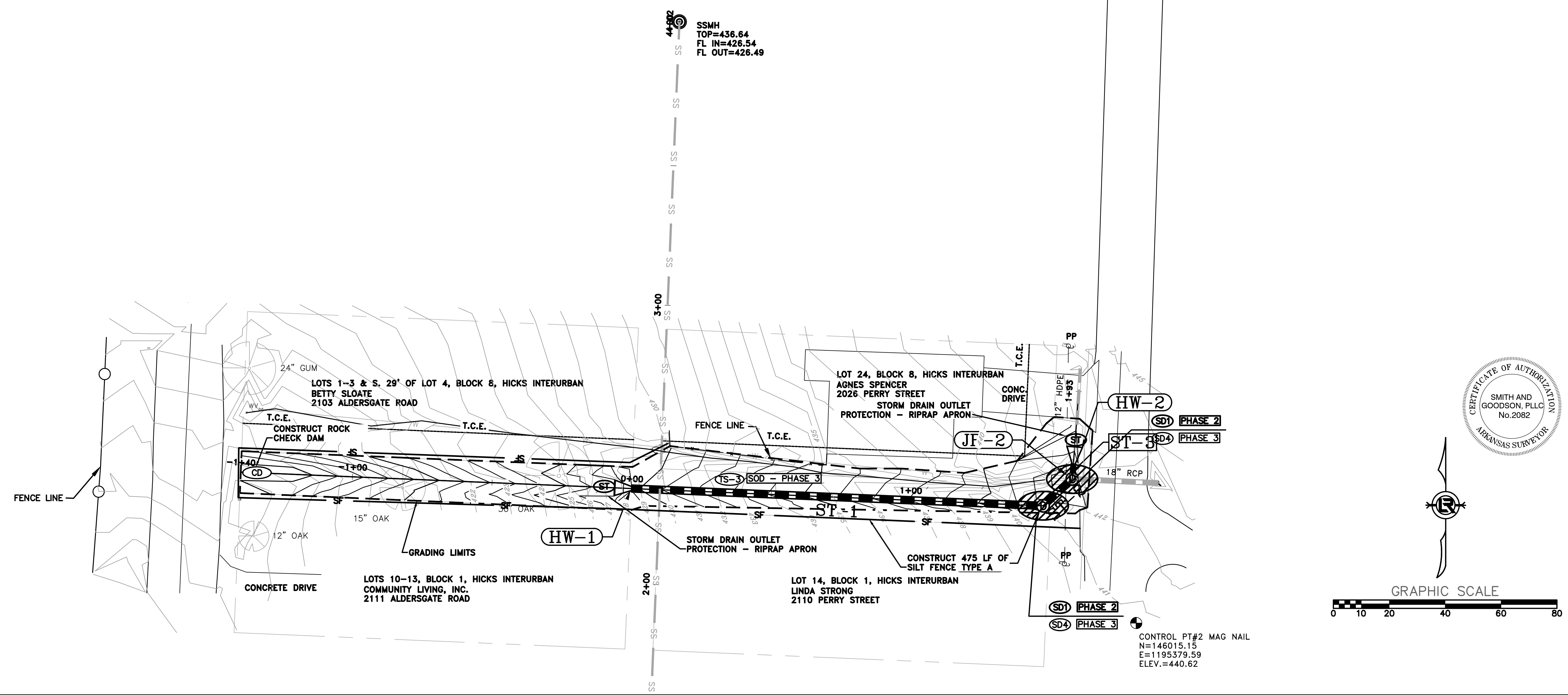
SHEET NO.
C3

PHASING LEGEND
 PHASE 1 (INITIAL STRIP AND DEMOLITION)
 PHASE 2 (NEW DRAINAGE AND BASE COURSE IN PLACE)
 PHASE 3 (PAVED, GRASS NOT YET ESTABLISHED)

CONTROL PT#1 MAG NAIL IN ASPHALT
 LOCATED ON THE EAST EDGE OF PAVEMENT
 AT 2015 PERRY STREET.
 N=146401.26
 E=1195394.39
 ELEV.=461.27

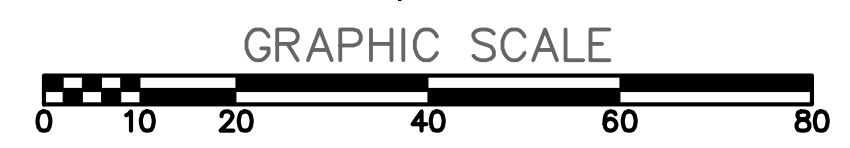
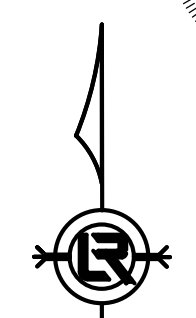
REVISIONS	DATE

CITY OF LITTLE ROCK, ARKANSAS
 22ND STREET ROW DRAIN IMPROVEMENTS
 EROSION CONTROL PLAN
 90% PLANS



SSMH
 TOP=436.64
 FL IN=426.54
 FL OUT=426.49

CONTROL PT#2 MAG NAIL
 N=146015.15
 E=1195379.59
 ELEV.=440.62



DEPARTMENT OF PUBLIC WORKS
 CIVIL ENGINEERING
 701 W. MARKHAM
 LITTLE ROCK, ARKANSAS 72201

NOT FOR CONSTRUCTION
 ARKANSAS REGISTERED PROFESSIONAL ENGINEER
 No. 17170
 J. GRIFFIN

DRAWN BY
 J. GRIFFIN
 DESIGNED
 J. GRIFFIN
 CHECKED
 A. SMITH
 DATE
 07/02/2019
 SCALE
 1" = 20'
 PROJECT NO.
 CLR # 06-16-DR-234
 SHEET NO.
C4