

CLR PROJECT # 01-17-ST-57

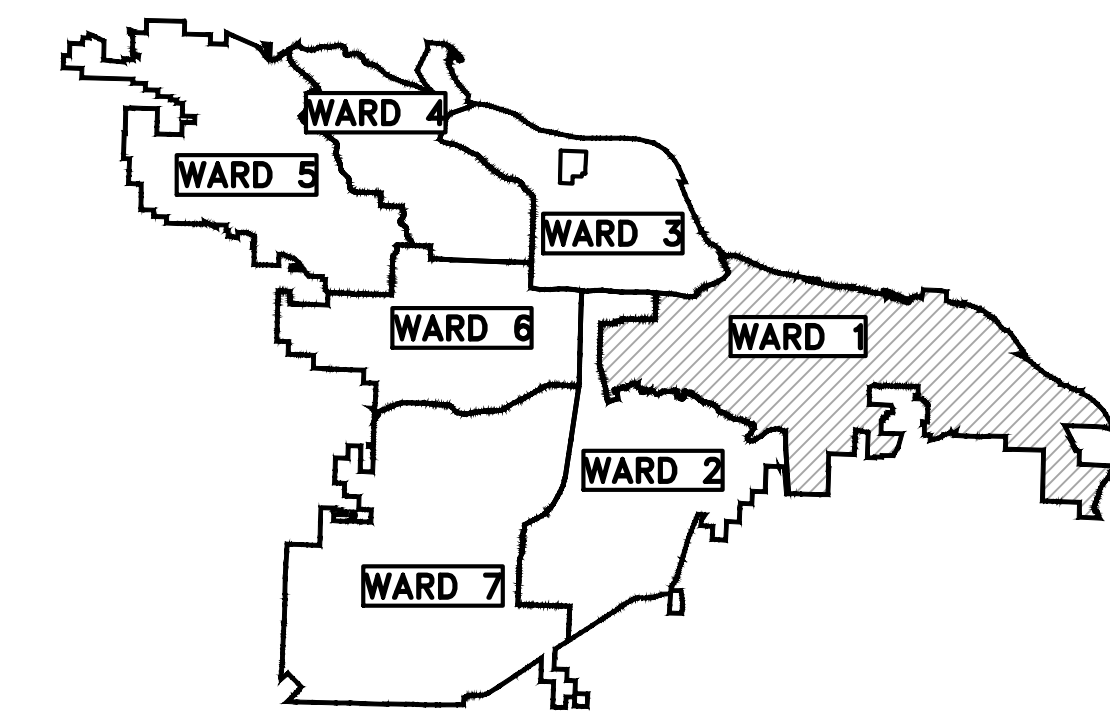
WEST 19th STREET RECONSTRUCTION

W 19th (GRANT TO EX. BRIDGE)

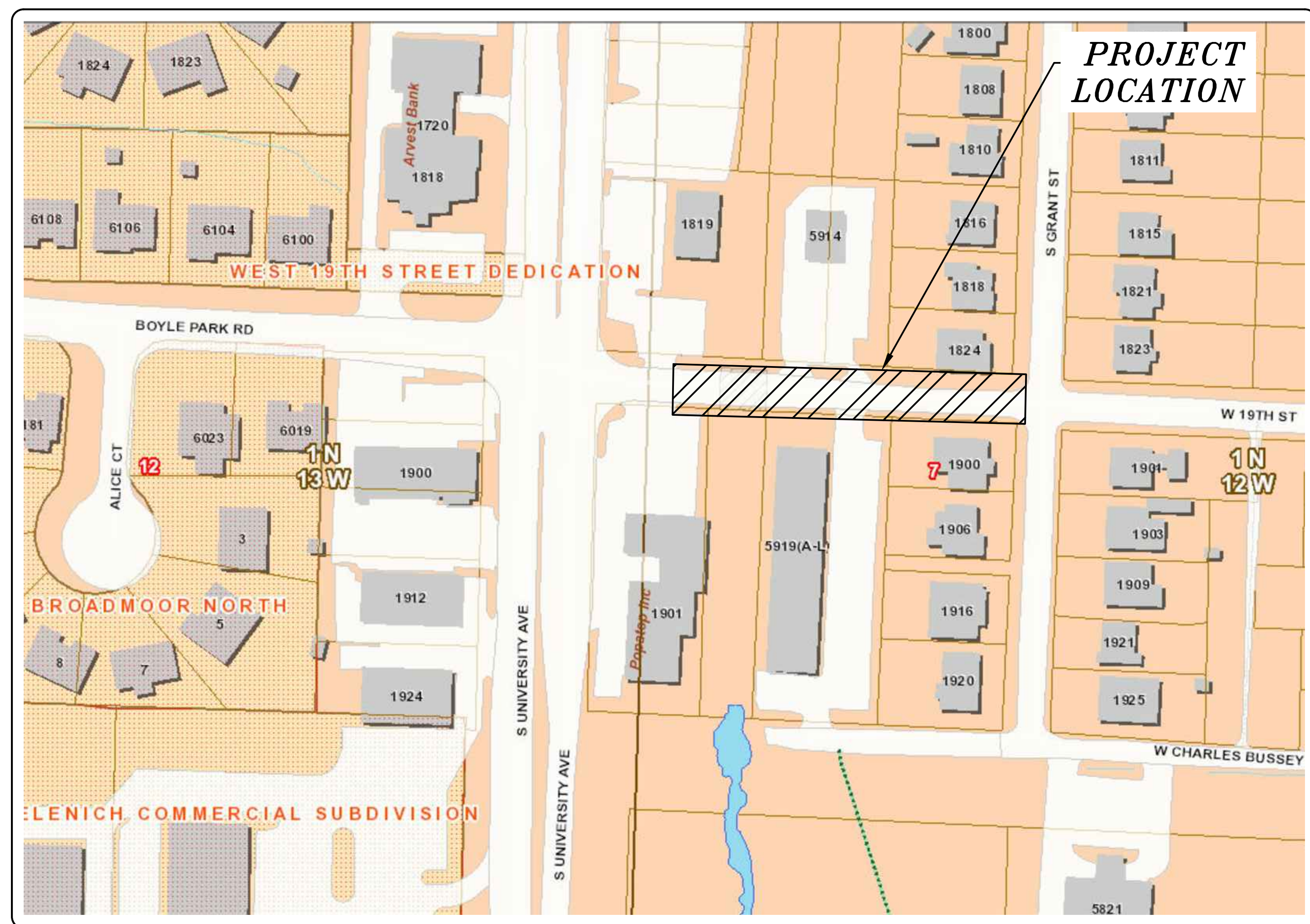
90% PLANS

REVISIONS	DATE

CITY OF LITTLE ROCK, ARKANSAS
 WEST 19th STREET RECONSTRUCTION
 COVER SHEET
 90% PLANS



PROJECT LOCATION - WARD 1

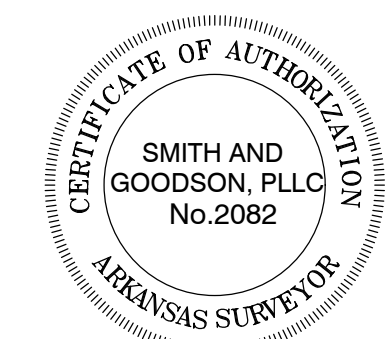


SHEET NO.	TITLE
C1	COVER SHEET
C2	LEGEND / GENERAL NOTES
C3	OVERALL PROJECT PLAN
C4	19th STREET PLAN & PROFILE SHEET 1 OF 1



2019-2021
BOND PROGRAM

DEPARTMENT OF PUBLIC WORKS
 CIVIL ENGINEERING
 701 WEST MARKHAM STREET
 LITTLE ROCK, ARKANSAS 72201



SMITH AND GOODSON
 PLLC
 CIVIL ENGINEERING AND LAND SURVEYING
 7509 CANTRELL ROAD, SUITE 227
 LITTLE ROCK, ARKANSAS 72207
 501-414-8498

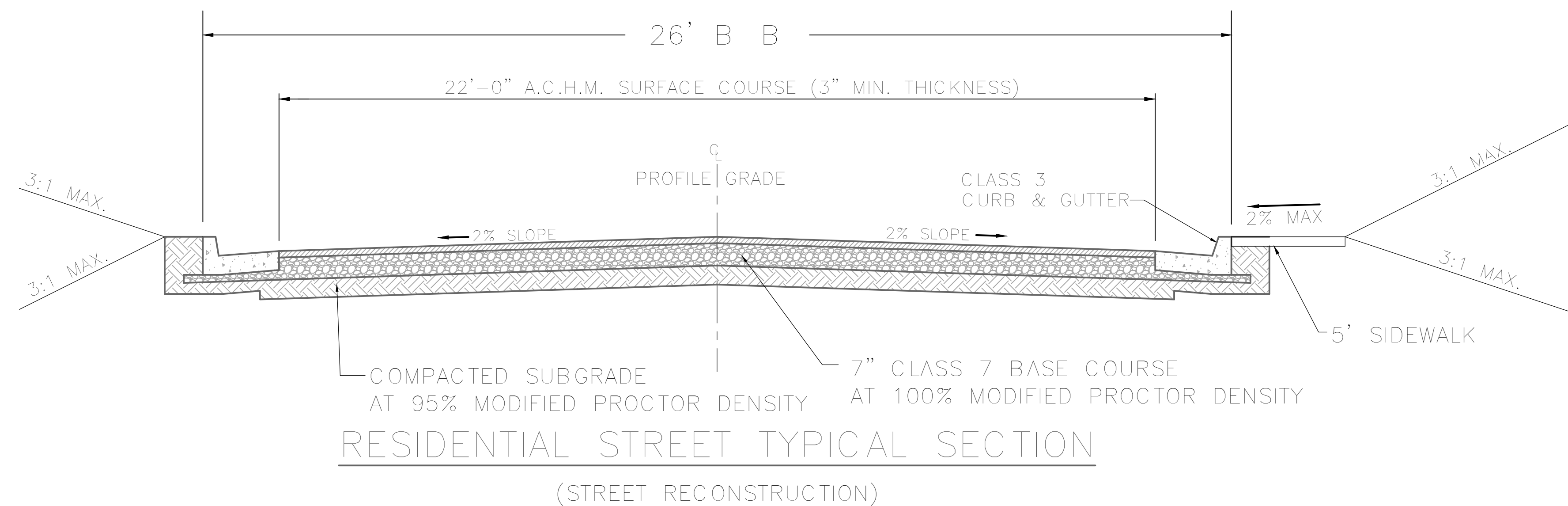
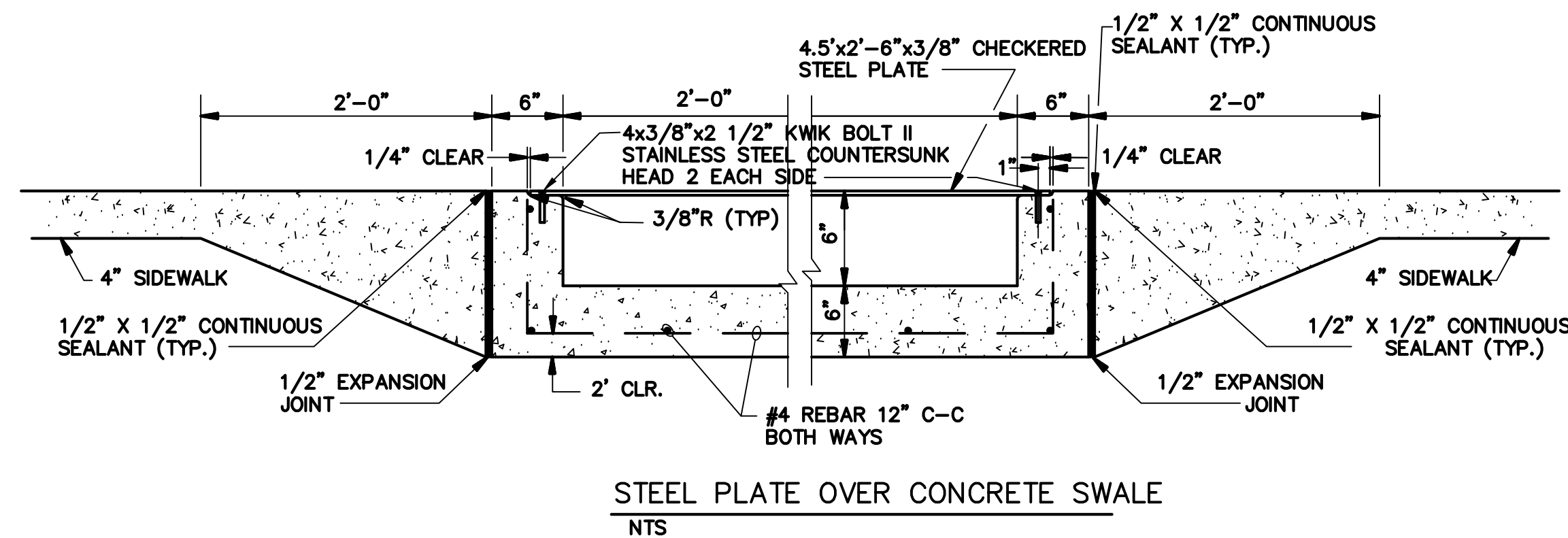
PROJECT ENGINEER:
JESS GRIFFIN, PE
 (501) 690-3456 - JGGRIFINPE@GMAIL.COM

DEPARTMENT OF PUBLIC WORKS
 CIVIL ENGINEERING
 701 W. MARKHAM
 LITTLE ROCK, ARKANSAS 72201



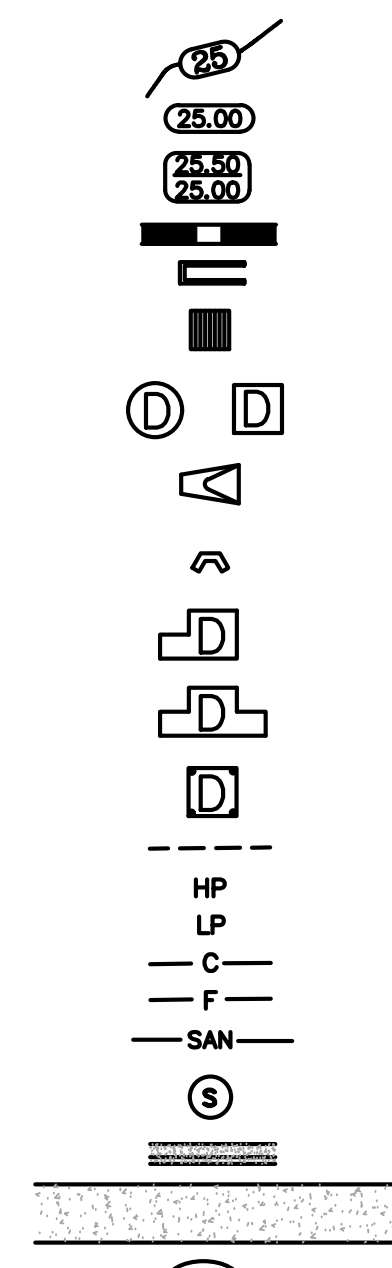
DRAWN BY J. GRIFFIN
DESIGNED J. GRIFFIN
CHECKED A. SMITH
DATE 07/02/2019
SCALE NTS
PROJECT NO. CLR # 01-17-ST-57
SHEET NO. C1

Item No.	Item Description	Quantity	Unit
2.01	SITE PREPARATION	1	LS
3.06	BORROW MATERIAL	142	CY
4.01	AGGREGATE BASE COURSE - CLASS 7	210	TON
6.01	ACHM SURFACE COURSE (3" THICK) - TYPE 2	90	TON
7.04	CONCRETE DRIVEWAY (6" THICK), STANDARD FINISH	390	SF
8.03	CONCRETE CURB AND GUTTER (CLASS 3)	440	LF
9.04	CONCRETE SIDEWALK (4" THICK)	955	SF
10.04	CURB INLET - 4' BOX	3	Ea.
10.07	WING 3' EXTENTION	3	Ea.
13.24C	STORM DRAIN PIPES, 24" RCP (SIDE DRAIN)	100	LF
14.01	SOLID SODDING, BERMUDA (INCLUDES 4" OF TOP SOIL)	500	SY
16.01	MAINTENANCE OF TRAFFIC	1	LS
18.55	WATER FOR DUST CONTROL	2000	GAL
19.01	FINAL CLEANUP	1	LS
24.06	SEDIMENT BARRIER, SILT FENCE (SD1)	250	LF



- EXISTING**
- IRON ROD
 - PK NAIL
 - R.R. SPIKE
 - CONC. MONUMENT
 - WATER VALVE
 - WATER METER
 - FIRE HYDRANT
 - GAS METER
 - GAS VALVE
 - CLEAN-OUT
 - GUARD POST (BOLLARD)
 - SIGN POST
 - BENCHMARK
 - STORM SEWER MANHOLE
 - SANITARY SEWER MANHOLE
 - TELEPHONE MANHOLE
 - ELECTRIC MANHOLE
 - TELEPHONE BOX
 - ELECTRIC BOX
 - CABLE BOX
 - UTILITY POLE
 - GUY WIRE
 - LIGHT POLE
 - POST OR POLE (TYPE AS NOTED)
 - MAILBOX
 - DECIDUOUS TREE
 - EVERGREEN/CONIFEROUS TREE
 - BUSH
 - PROPERTY LINE
 - SETBACK LINE
 - EASEMENT LINE
 - CURB
 - FENCE
 - OVERHEAD ELECTRIC
 - OVERHEAD TELEPHONE
 - OVERHEAD CABLE
 - UNDERGROUND TELEPHONE
 - UNDERGROUND ELECTRIC
 - UNDERGROUND CABLE
 - WATER LINE
 - SEWER LINE
 - GAS LINE
 - STORM SEWER/CULVERT
 - EDGE OF WOODS
 - CONTOUR LINE

- PROPOSED**
- PROPOSED CONTOUR
 - PROPOSED SPOT ELEVATION
 - PROPOSED SPOT CURB ELEVATION
 - STORM SEWER - PIPE
 - STORM SEWER - MITERED END SECTION
 - STORM SEWER - GRATE INLET
 - STORM SEWER - JUNCTION BOX
 - STORM SEWER - FLARED END SECTION
 - STORM SEWER - HEADWALL
 - STORM SEWER - SINGLE WING
 - STORM SEWER - DOUBLE WING
 - STORM SEWER - AREA INLET
 - GRADE BREAK LINE
 - HIGH POINT
 - LOW POINT
 - CUT LINE
 - FILL LINE
 - SANITARY SEWER PIPE
 - SANITARY SEWER MANHOLE
 - PROPOSED CURB
 - PROPOSED CONCRETE
 - CONSTRUCTION - ENTRANCE/EXIT
 - CHECK DAM
 - DIVERSION BERM
 - DOWNDRAIN STRUCTURE - TEMPORARY
 - ROCK DAM
 - SEDIMENT BARRIER - SILT FENCE
 - SEDIMENT BARRIER - GRAVEL RING
 - SEDIMENT BARRIER - BLOCK & GRAVEL
 - SEDIMENT BARRIER - BLOCK
 - TEMPORARY SEDIMENT BASIN
 - SILT FENCE - TYPE A
 - SILT FENCE - TYPE B
 - SILT FENCE - TYPE C
 - STORM DRAIN OUTLET PROTECTION
 - SURFACE ROUGHENING
 - DISTURBED AREA STABILIZATION - TEMPORARY STABILIZATION
 - DISTURBED AREA STABILIZATION - TEMPORARY GRASSING
 - DISTURBED AREA STABILIZATION - PERMANENT GRASSING
 - MATting/BLANKETS



REVISIONS	DATE

CITY OF LITTLE ROCK, ARKANSAS
WEST 19th STREET RECONSTRUCTION

LEGEND / GENERAL NOTES
90% PLANS

DEPARTMENT OF PUBLIC WORKS
CIVIL ENGINEERING
701 W. MARKHAM
LITTLE ROCK, ARKANSAS 72201

ARKANSAS REGISTERED PROFESSIONAL ENGINEER
No. 17170
NOT FOR CONSTRUCTION



DRAWN BY
J. GRIFFIN

DESIGNED
J. GRIFFIN

CHECKED
A. SMITH

DATE
07/02/2019

SCALE
NTS

PROJECT NO.
CLR # 01-17-ST-57

SHEET NO.
C2

REVISIONS	DATE

CITY OF LITTLE ROCK, ARKANSAS
WEST 19th STREET RECONSTRUCTION
 OVERALL PROJECT PLAN
 90% PLANS

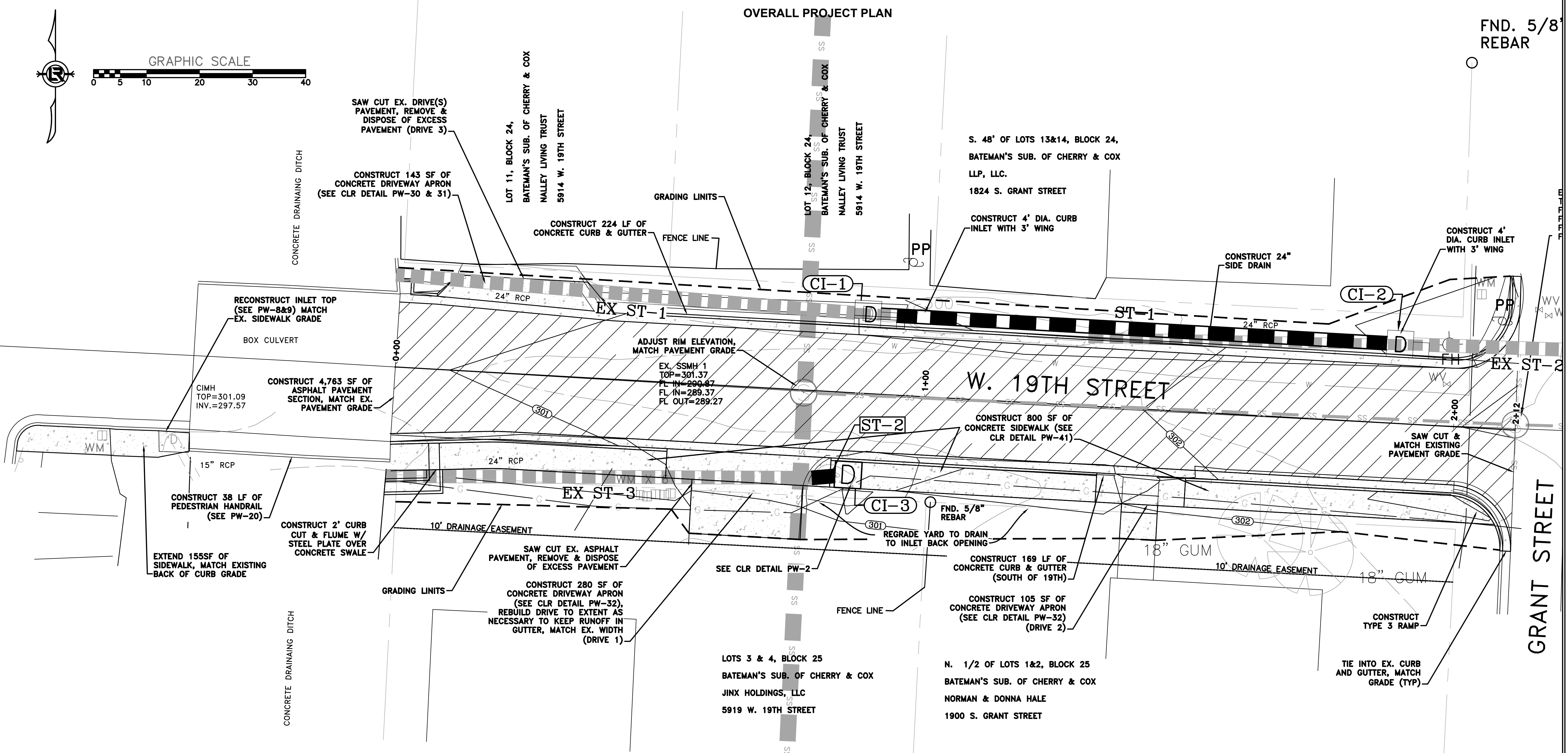
DEPARTMENT OF PUBLIC WORKS
 CIVIL ENGINEERING
 701 W. MARKHAM
 LITTLE ROCK, ARKANSAS 72201

NOT FOR CONSTRUCTION
 ARKANSAS REGISTERED PROFESSIONAL ENGINEER
 No. 17170
 J. G. GRIFFIN

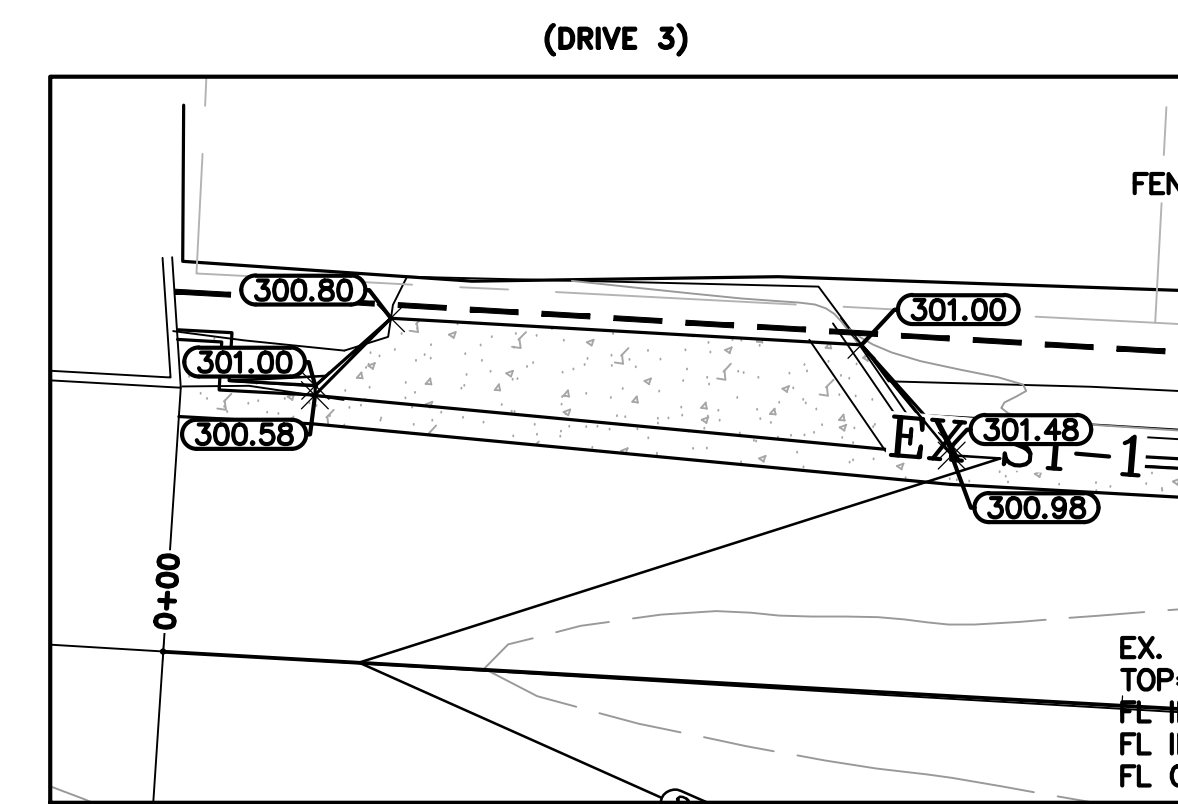
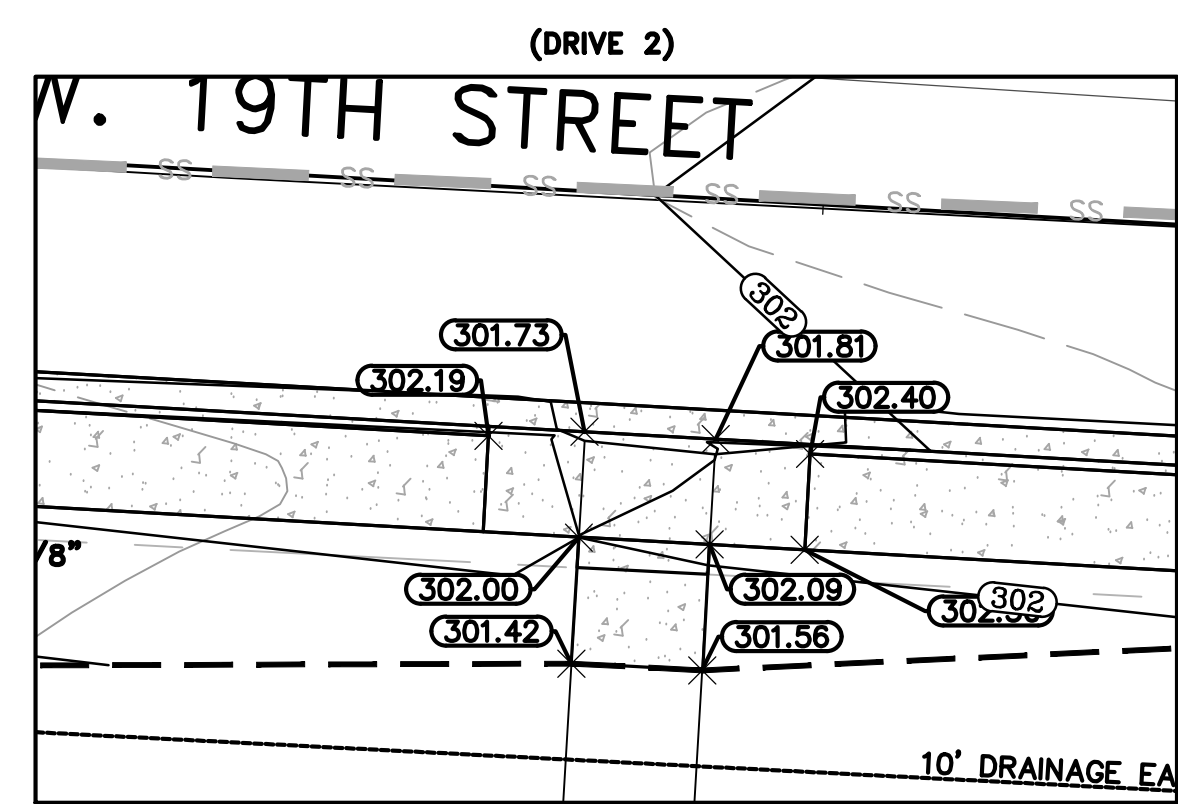
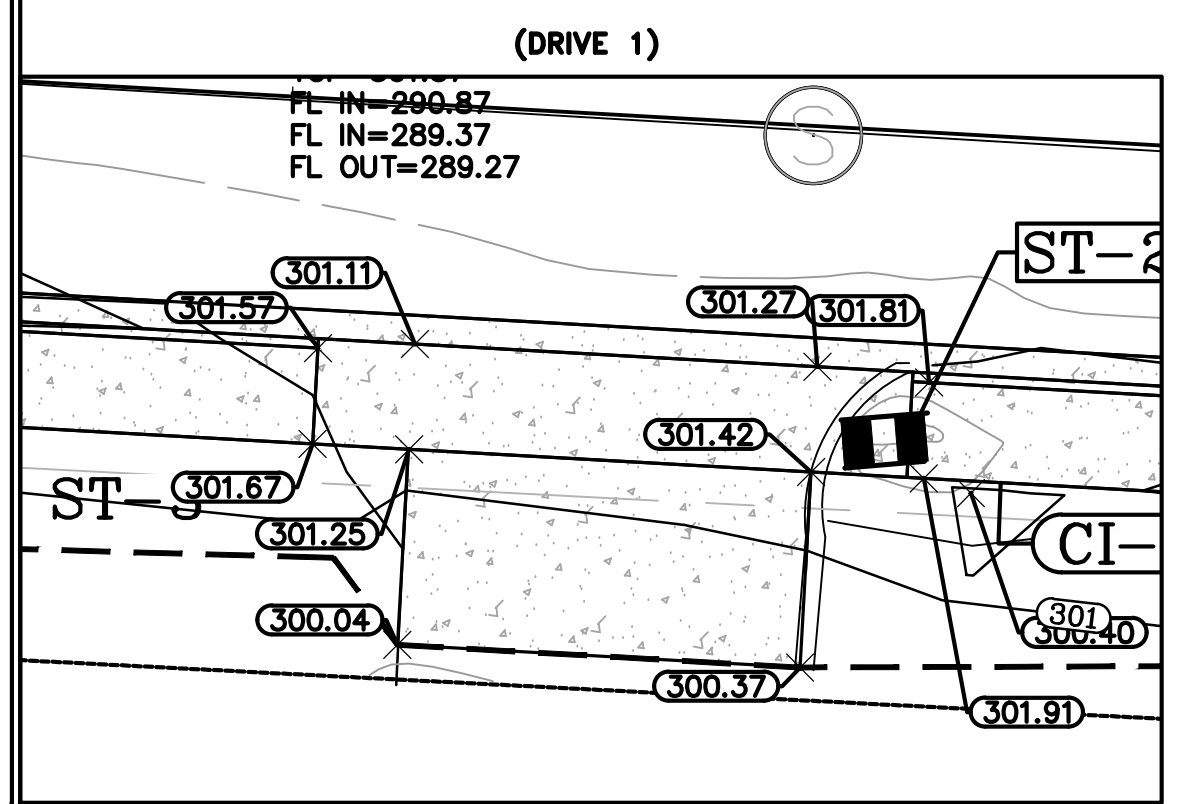
DRAWN BY
 J. GRIFFIN
 DESIGNED
 J. GRIFFIN
 CHECKED
 A. SMITH
 DATE
 07/02/2019
 SCALE
 NTS
 PROJECT NO.
 CLR # 01-17-ST-57
 SHEET NO.
C3

OVERALL PROJECT PLAN

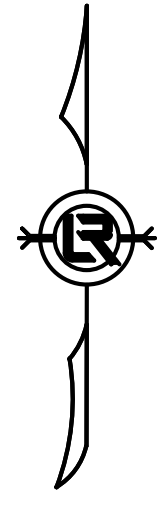
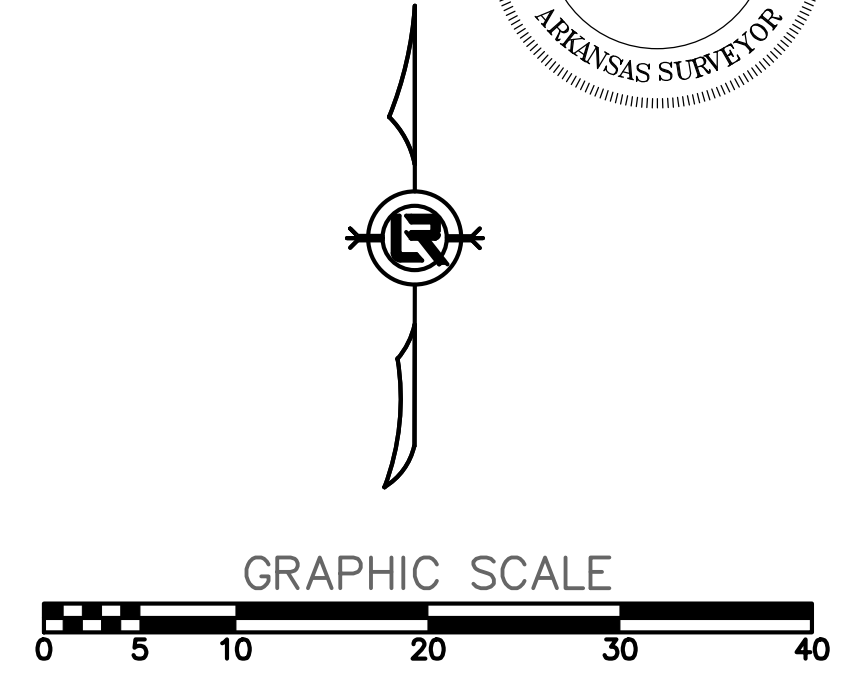
FND. 5/8" REBAR

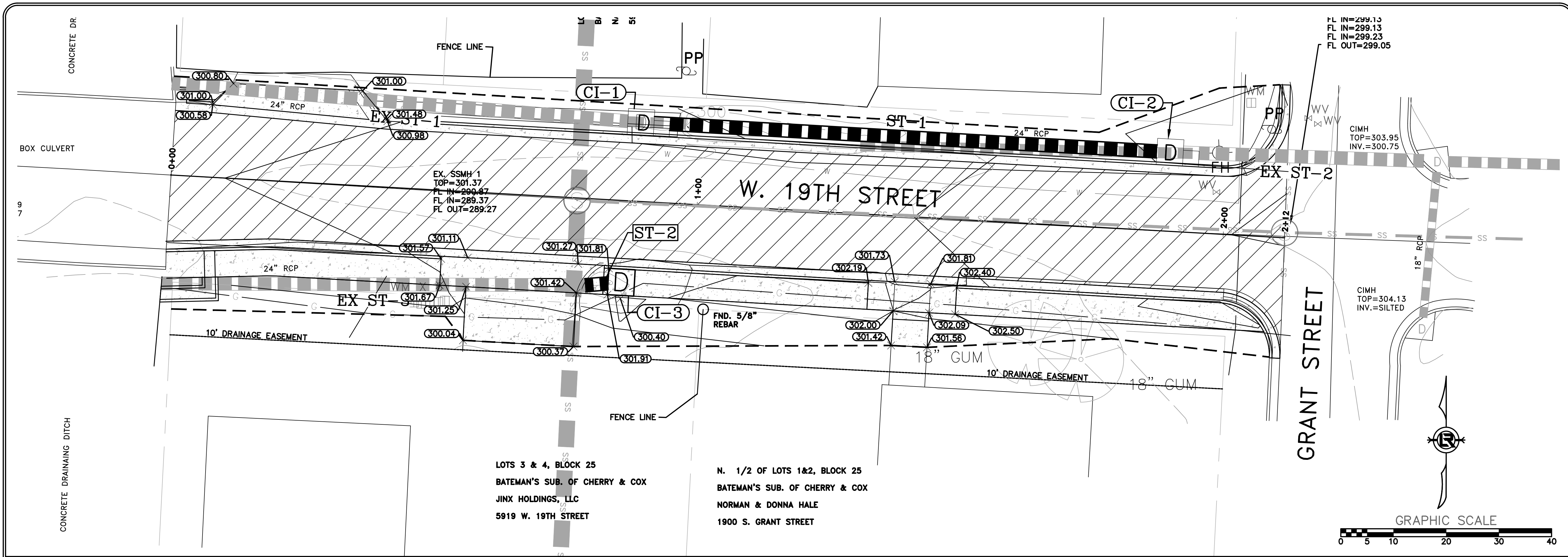


DRIVE GRADE DETAILS



CERTIFICATE OF AUTHORIZATION
 SMITH AND GOODSON, PLLC
 No. 2082
 ARKANSAS SURVEYOR





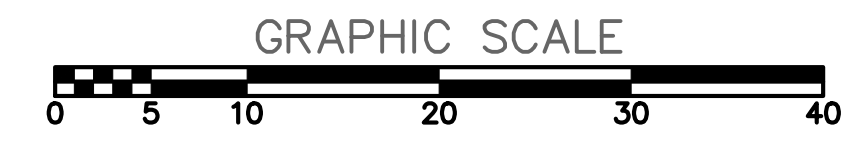
LOTS 3 & 4, BLOCK 25
 BATEMAN'S SUB. OF CHERRY & COX
 JINX HOLDINGS, LLC
 5919 W. 19TH STREET

N. 1/2 OF LOTS 1&2, BLOCK 25
 BATEMAN'S SUB. OF CHERRY & COX
 NORMAN & DONNA HALE
 1900 S. GRANT STREET

FL IN=299.13
 FL IN=299.13
 FL IN=299.23
 FL OUT=299.05

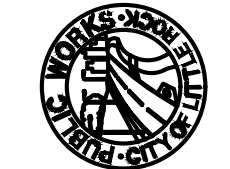
CIMH
 TOP=303.95
 INV.=300.75

CIMH
 TOP=304.13
 INV.=SILTED

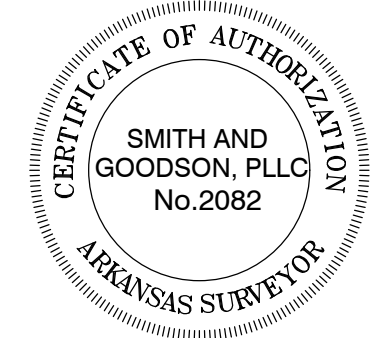
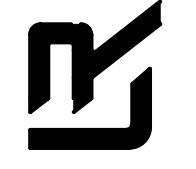


REVISIONS	DATE

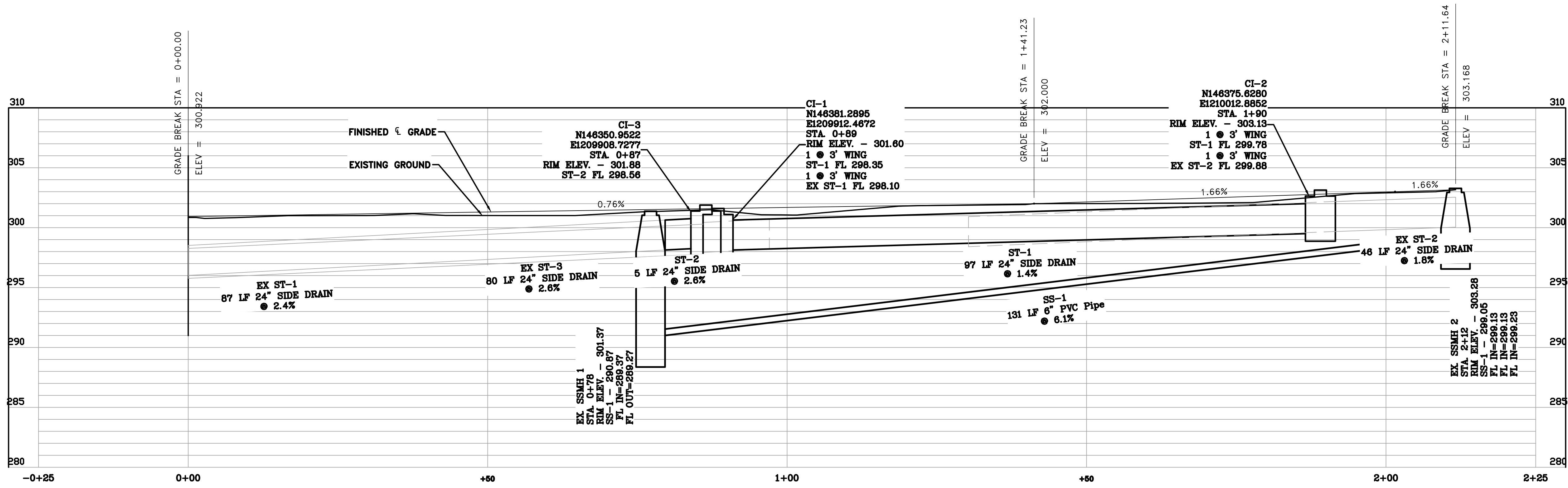
CITY OF LITTLE ROCK, ARKANSAS
 WEST 19th STREET RECONSTRUCTION
 19th STREET PLAN & PROFILE SHEET 1 OF 1
 90% PLANS



DEPARTMENT OF PUBLIC WORKS
 CIVIL ENGINEERING
 701 W. MARKHAM
 LITTLE ROCK, ARKANSAS 72201



NOT FOR CONSTRUCTION
 ARKANSAS REGISTERED PROFESSIONAL ENGINEER
 No. 17170
 JOSE G. GREEN



DRAWN BY
 J. GRIFFIN
 DESIGNED
 J. GRIFFIN
 CHECKED
 A. SMITH
 DATE
 07/02/2019
 SCALE
 NTS
 PROJECT NO.
 CLR # 01-17-ST-57
 SHEET NO.
C4