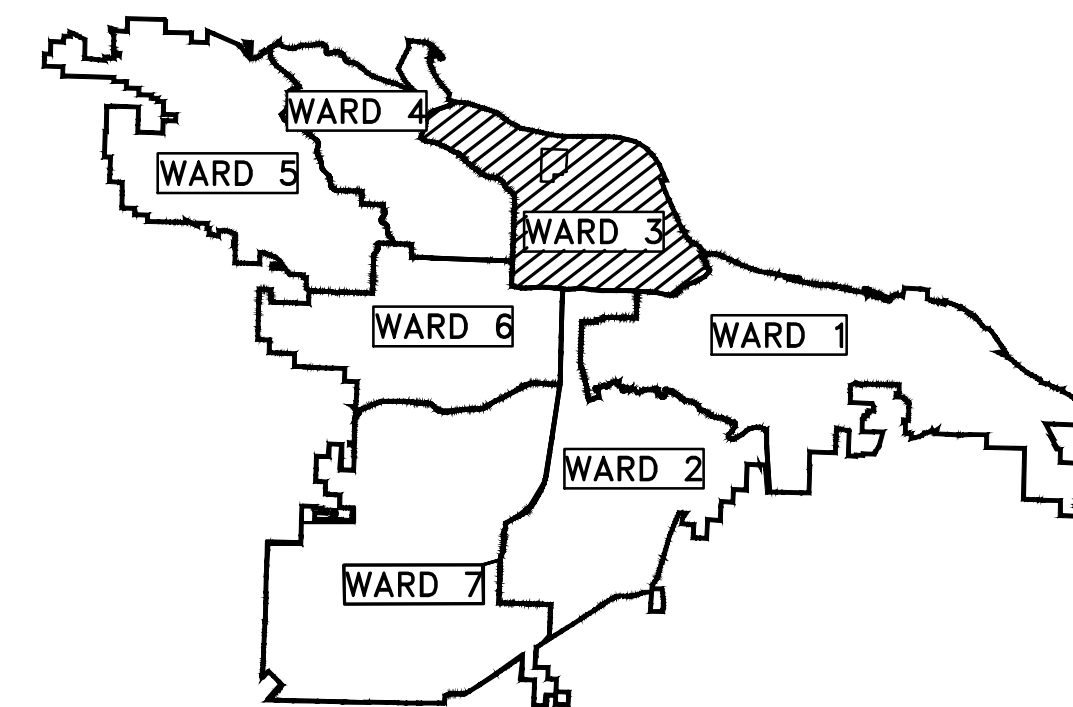


CLR PROJECT 03-17-SW-355 NORTH LOOKOUT ROAD SIDEWALK REPLACEMENT LITTLE ROCK, ARKANSAS



PROJECT LOCATION – WARD 3



SHEET NO.	TITLE
C1	COVER SHEET
C2	GENERAL NOTES, LEGEND AND QUANTITIES
C3	PROPOSED LAYOUT SECTION A: BOC TO EOC SECTION B: BOC TO 11+65.00
C4	PROPOSED LAYOUT SECTION B: 11+65.00 TO EOC
C5	EROSION CONTROL SECTION A: BOC TO EOC SECTION B: BOC TO 11+65.00
C6	EROSION CONTROL SECTION B: 11+65.00 TO EOC



**2019-2021
BOND PROGRAM**

DEPARTMENT OF PUBLIC WORKS
CIVIL ENGINEERING
701 WEST MARKHAM STREET
LITTLE ROCK, ARKANSAS 72201



REVISIONS	DATE

CITY OF LITTLE ROCK, ARKANSAS
N. LOOKOUT RD. SIDEWALK REPLACEMENT
COVER SHEET

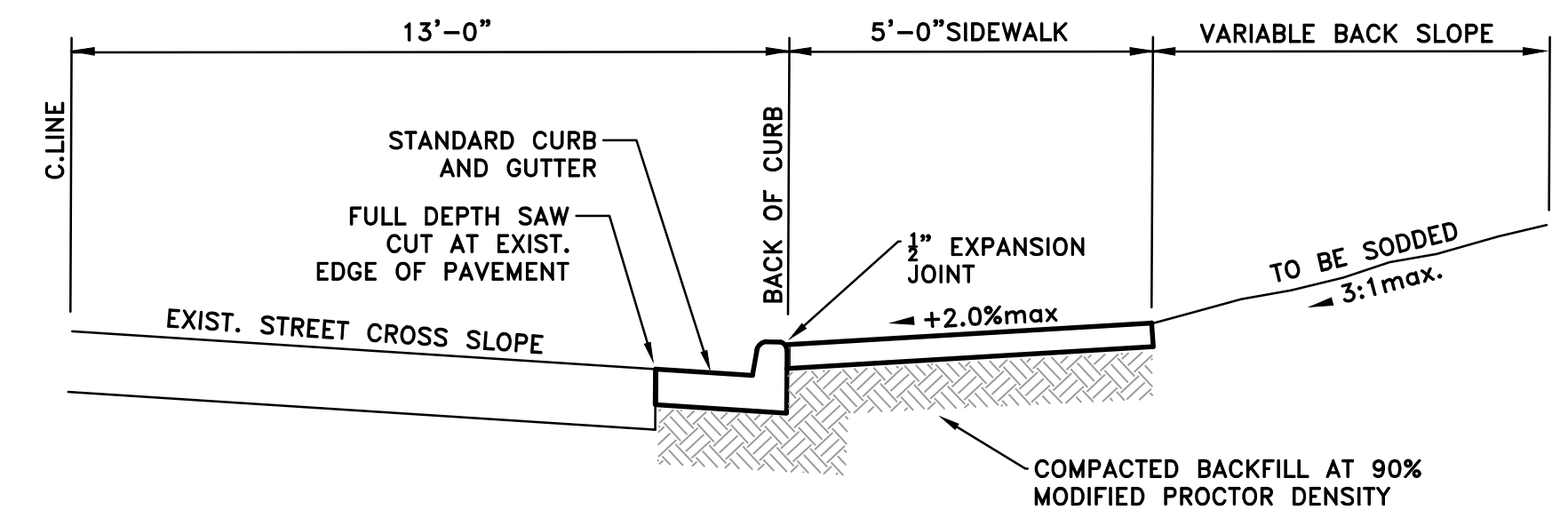
DEPARTMENT OF PUBLIC WORKS
CIVIL ENGINEERING
701 W. MARKHAM
LITTLE ROCK, ARKANSAS 72201

SEAL

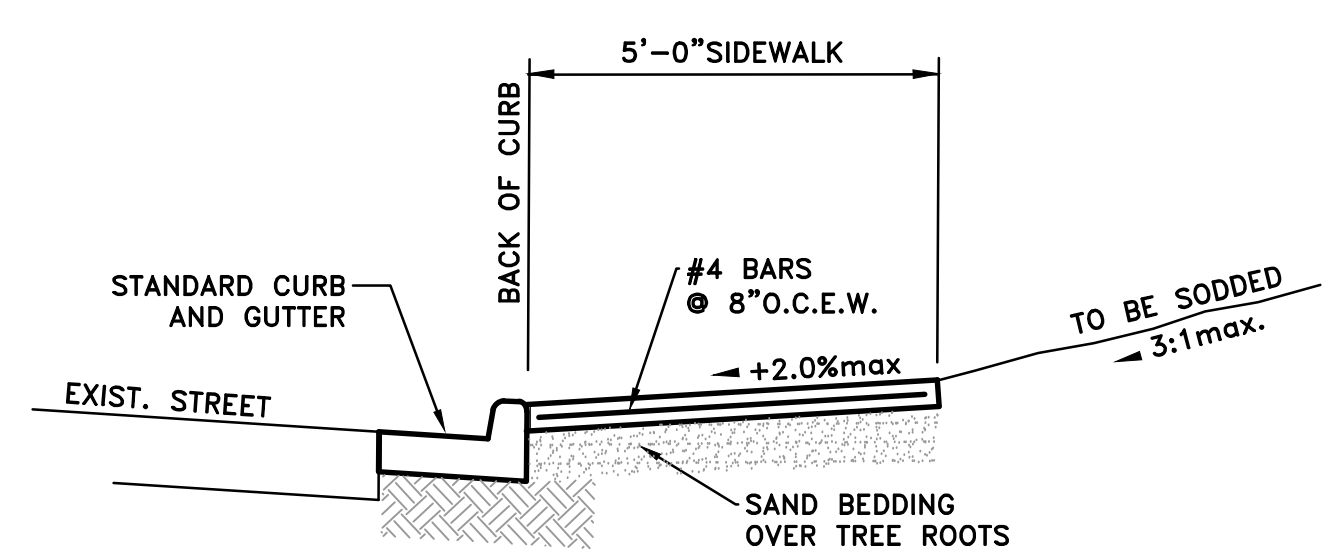
DRAWN BY	
DESIGNED	JRH
CHECKED	JRH
DATE	2/18/19
SCALE	NTS
PROJECT NO.	03-17-SW-355
SHEET NO.	C1

REVISIONS	DATE

CLR PROJECT 03-17-SW			
N Lookout Road Sidewalk			
3-Mar-19			
ITEM #	ITEM DESCRIPTION	UNIT	QUANTITY
2.01	SITE PREPARATION	LS	1
3.01	UNCLASSIFIED EXCAVATION	CY	20
3.06	BORROW MATERIAL	CY	10
7.06	CONCRETE DRIVEWAY (4" THICK), STANDARD FINISH	SF	225
8.03	CONCRETE CURB AND GUTTER (CLASS 3)	LF	1160
9.04	CONCRETE SIDEWALK (4" THICK)	SF	5800
9.40	CONCRETE SIDEWALK "TURN UP" WALL (PW-44)(PW-45)	SF	35
10.07	WING 3' EXTENSION	EA	3
10.80	REBUILD INLET TOP	EA	2
14.01	SOLID SODDING, BERMUDA	SY	350
16.01	MAINTENANCE OF TRAFFIC	LS	1
17.01	PAVEMENT REPAIRS	SY	10
18.01	REMOVE AND REPLACE FENCE (WOOD 3 RAIL FENCE)	LF	10
18.50	ACCESS RAMP	SF	190
19.10	CLEANUP	LS	1
24.11	SILT FENCE	LF	120
24.22A	STRAW WADDLES (SD-2)	EA	3



PROP. SIDEWALK TYPICAL



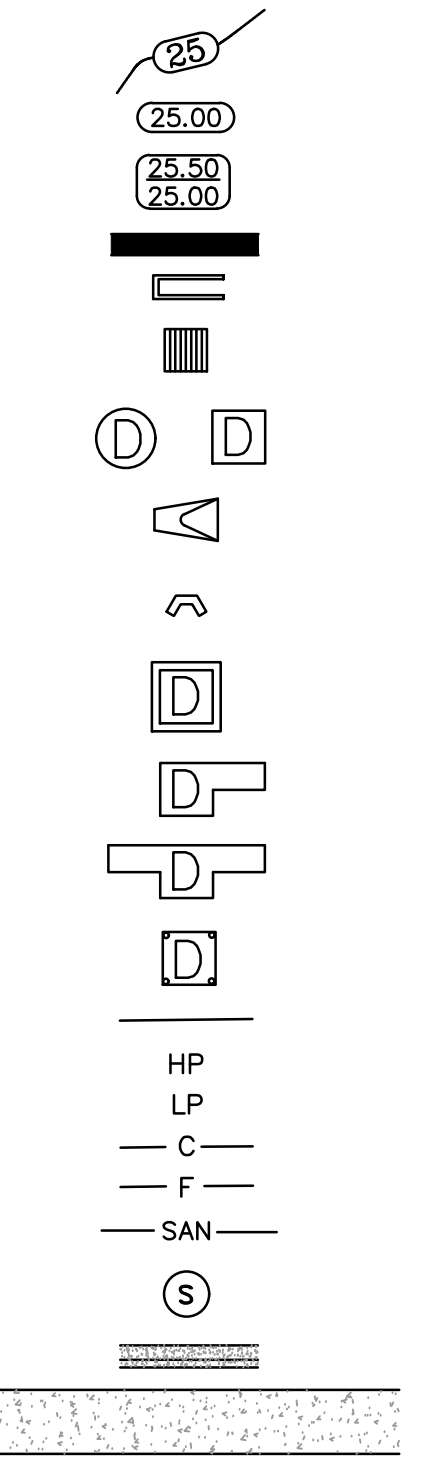
PROP. SIDEWALK OVER ROOTS

EXISTING

- IRON ROD ○ IR
- PK NAIL ○ PK
- R.R. SPIKE ○ RR(Sp)
- CONC. MONUMENT □ CM
- WATER VALVE ⊗ WV
- WATER METER □ WM
- FIRE HYDRANT ∇ FH
- GAS METER ⊠ GM
- GAS VALVE ⊗ GV
- CLEAN-OUT ○ CO
- GUARD POST (BOLLARD) ● GP
- SIGN POST ⊕
- BENCHMARK ⊕
- STORM SEWER MANHOLE (D)
- SANITARY SEWER MANHOLE (S)
- TELEPHONE MANHOLE (T)
- ELECTRIC MANHOLE (E)
- TELEPHONE BOX □
- ELECTRIC BOX □
- CABLE BOX □
- UTILITY POLE ⊕
- GUY WIRE ⊕
- LIGHT POLE ⊕
- POST OR POLE (TYPE AS NOTED) ⊕
- MAILBOX □
- DECIDUOUS TREE (tree symbol)
- EVERGREEN/CONIFEROUS TREE (tree symbol)
- BUSH (bush symbol)
- PROPERTY LINE (---X---X---X---)
- SETBACK LINE (---X---X---X---)
- EASEMENT LINE (---X---X---X---)
- CURB (---X---X---X---)
- FENCE (---X---X---X---)
- OVERHEAD ELECTRIC (---OE---OE---)
- OVERHEAD TELEPHONE (---OT---OT---)
- OVERHEAD CABLE (---OC---OC---)
- UNDERGROUND TELEPHONE (---UGT---)
- UNDERGROUND ELECTRIC (---UGE---)
- UNDERGROUND CABLE (---UGC---)
- WATER LINE (---8"W---
- SEWER LINE (---8"SS---
- GAS LINE (---4"G---
- STORM SEWER/CULVERT (---24" CMP/RCP/DIP---
- EDGE OF WOODS (wavy line)
- CONTOUR LINE (---650---

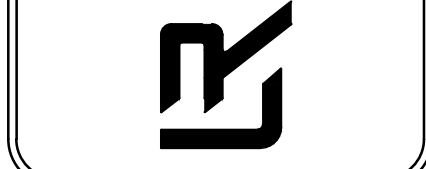
PROPOSED

- PROPOSED CONTOUR (25)
- PROPOSED SPOT ELEVATION (25.00)
- PROPOSED SPOT CURB ELEVATION (25.50, 25.00)
- STORM SEWER - PIPE
- STORM SEWER - MITERED END SECTION
- STORM SEWER - GRATE INLET
- STORM SEWER - JUNCTION BOX
- STORM SEWER - FLARED END SECTION
- STORM SEWER - HEADWALL
- STORM SEWER - NO WING
- STORM SEWER - SINGLE WING
- STORM SEWER - DOUBLE WING
- STORM SEWER - AREA INLET
- GRADE BREAK LINE
- HIGH POINT (HP)
- LOW POINT (LP)
- CUT LINE (C)
- FILL LINE (F)
- SANITARY SEWER PIPE (SAN)
- SANITARY SEWER MANHOLE (S)
- PROPOSED CURB
- PROPOSED CONCRETE
- CONSTRUCTION - ENTRANCE/EXIT (CO)
- CHECK DAM (CD)
- DIVERSION BERM (DI)
- DOWNDRAIN STRUCTURE - TEMPORARY (DN)
- ROCK DAM (RD)
- SEDIMENT BARRIER - SILT FENCE (SD1)
- SEDIMENT BARRIER - GRAVEL RING (SD2)
- SEDIMENT BARRIER - BLOCK & GRAVEL (SD3)
- SEDIMENT BARRIER - BLOCK (SD4)
- TEMPORARY SEDIMENT BASIN (SB1)
- SILT FENCE - TYPE A (SFA)
- SILT FENCE - TYPE B (SFB)
- SILT FENCE - TYPE C (SFC)
- STORM DRAIN OUTLET PROTECTION (ST)
- SURFACE ROUGHENING (SU)
- DISTURBED AREA STABILIZATION - TEMPORARY STABILIZATION (TS1)
- DISTURBED AREA STABILIZATION - TEMPORARY GRASSING (TS2)
- DISTURBED AREA STABILIZATION - PERMANENT GRASSING (TS3)
- MATTING/BLANKETS (Mb)



CITY OF LITTLE ROCK, ARKANSAS
N. LOOKOUT RD. SIDEWALK REPLACEMENT
GENERAL NOTES, LEGEND AND QUANTITIES

DEPARTMENT OF PUBLIC WORKS
CIVIL ENGINEERING
701 W. MARKHAM
LITTLE ROCK, ARKANSAS 72201

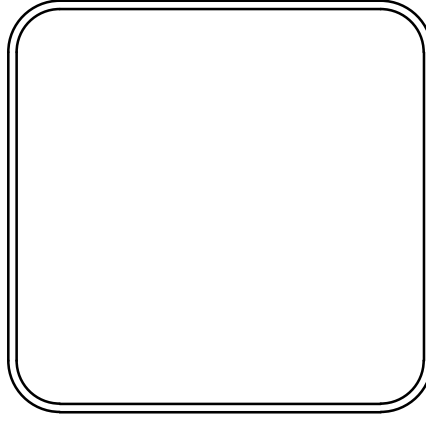


DRAWN BY
DESIGNED
JRH
CHECKED
JRH
DATE
2/18/19
SCALE
NTS
PROJECT NO.
03-17-SW-355
SHEET NO.
C2

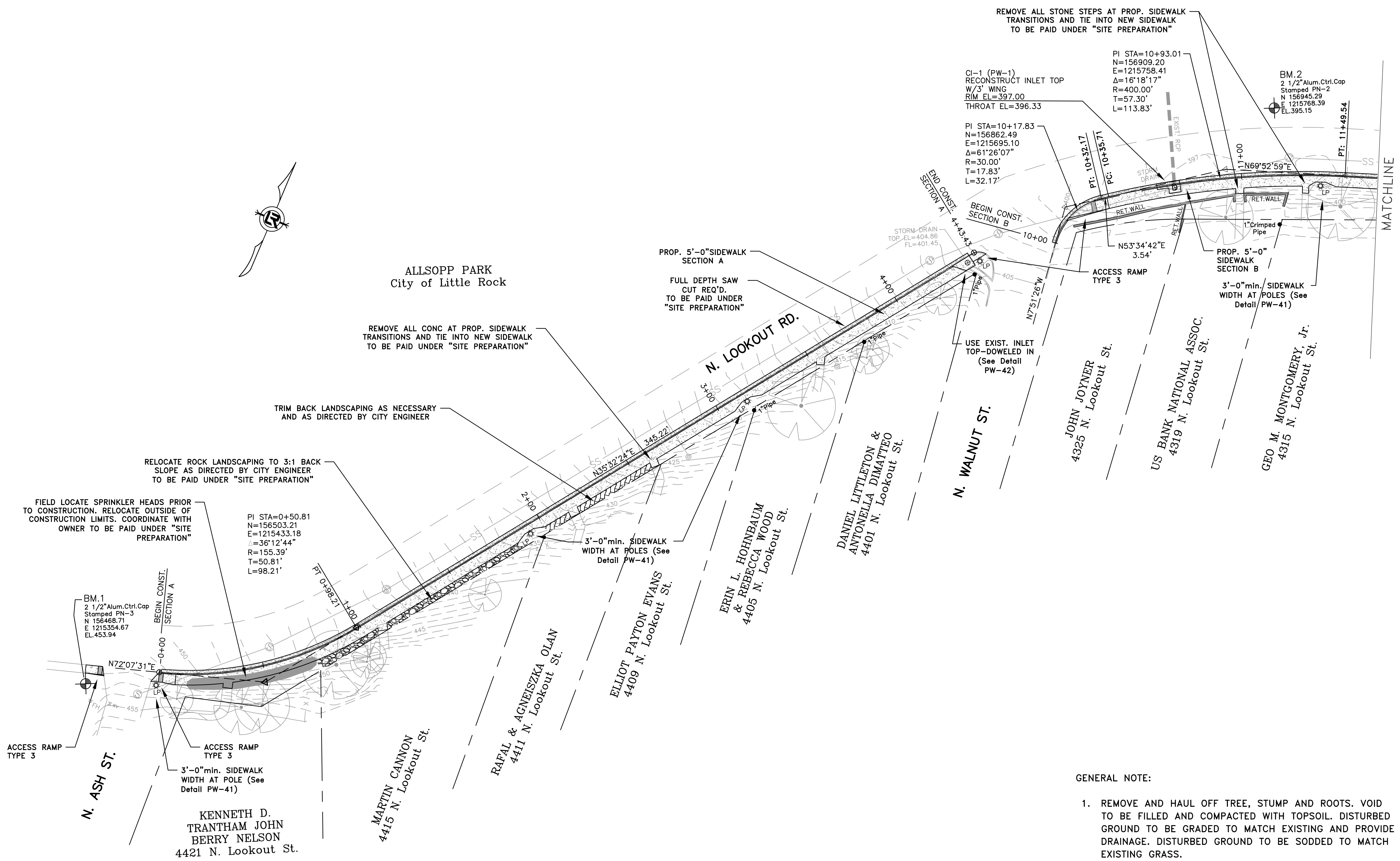
REVISIONS	DATE

CITY OF LITTLE ROCK, ARKANSAS
N. LOOKOUT RD. SIDEWALK REPLACEMENT
 PROPOSED LAYOUT (60%)

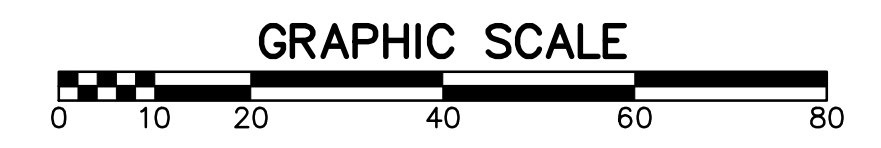
DEPARTMENT OF PUBLIC WORKS
 CIVIL ENGINEERING
 701 W. MARKHAM
 LITTLE ROCK, ARKANSAS 72201



DRAWN BY
 DESIGNED JRH
 CHECKED JRH
 DATE 2/18/19
 SCALE 1"=20'
 PROJECT NO. 03-17-SW-355
 SHEET NO. C3



- GENERAL NOTE:
1. REMOVE AND HAUL OFF TREE, STUMP AND ROOTS. VOID TO BE FILLED AND COMPACTED WITH TOPSOIL. DISTURBED GROUND TO BE GRADED TO MATCH EXISTING AND PROVIDE DRAINAGE. DISTURBED GROUND TO BE SODDED TO MATCH EXISTING GRASS.
 2. SECTION A & B CENTERLINES ARE LOCATED AT PROPOSED FACE OF CURB.



ALLSOPP PARK
 City of Little Rock

KENNETH D. TRANTHAM JOHN BERRY NELSON
 4421 N. Lookout St.

MARTIN CANNON
 4415 N. Lookout St.

RAFAL & AGNEISZKA OLAN
 4411 N. Lookout St.

ELLIOT PAYTON EVANS
 4409 N. Lookout St.

ERIN L. HOHNBAUM & REBECCA WOOD
 4405 N. Lookout St.

DANIEL LITTLETON & ANTONELLA DIMATTEO
 4401 N. Lookout St.

N. WALNUT ST.

JOHN JOYNER
 4325 N. Lookout St.

US BANK NATIONAL ASSOC.
 4319 N. Lookout St.

GEO M. MONTGOMERY, Jr.
 4315 N. Lookout St.

FIELD LOCATE SPRINKLER HEADS PRIOR TO CONSTRUCTION. RELOCATE OUTSIDE OF CONSTRUCTION LIMITS. COORDINATE WITH OWNER TO BE PAID UNDER "SITE PREPARATION"

RELOCATE ROCK LANDSCAPING TO 3:1 BACK SLOPE AS DIRECTED BY CITY ENGINEER TO BE PAID UNDER "SITE PREPARATION"

TRIM BACK LANDSCAPING AS NECESSARY AND AS DIRECTED BY CITY ENGINEER

REMOVE ALL CONC AT PROP. SIDEWALK TRANSITIONS AND TIE INTO NEW SIDEWALK TO BE PAID UNDER "SITE PREPARATION"

PROP. 5'-0" SIDEWALK SECTION A
 FULL DEPTH SAW CUT REQ'D. TO BE PAID UNDER "SITE PREPARATION"

REMOVE ALL STONE STEPS AT PROP. SIDEWALK TRANSITIONS AND TIE INTO NEW SIDEWALK TO BE PAID UNDER "SITE PREPARATION"

ACCESS RAMP TYPE 3

ACCESS RAMP TYPE 3
 3'-0" min. SIDEWALK WIDTH AT POLE (See Detail PW-41)

3'-0" min. SIDEWALK WIDTH AT POLES (See Detail PW-41)

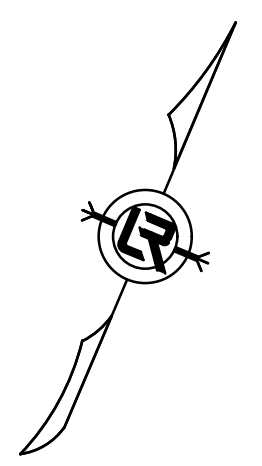
USE EXIST. INLET TOP-DOWELED IN (See Detail PW-42)

3'-0" min. SIDEWALK WIDTH AT POLES (See Detail PW-41)

N. ASH ST.

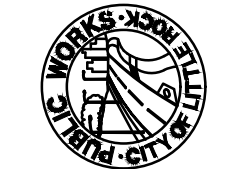
N. LOOKOUT RD.

MATCHLINE

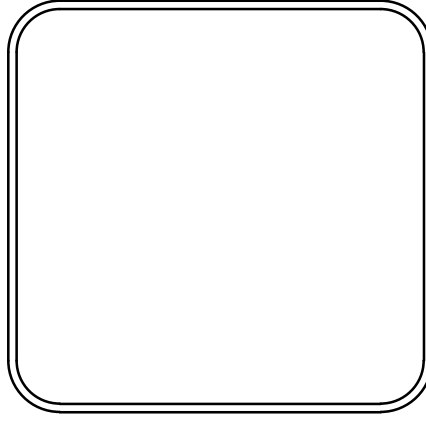


REVISIONS	DATE

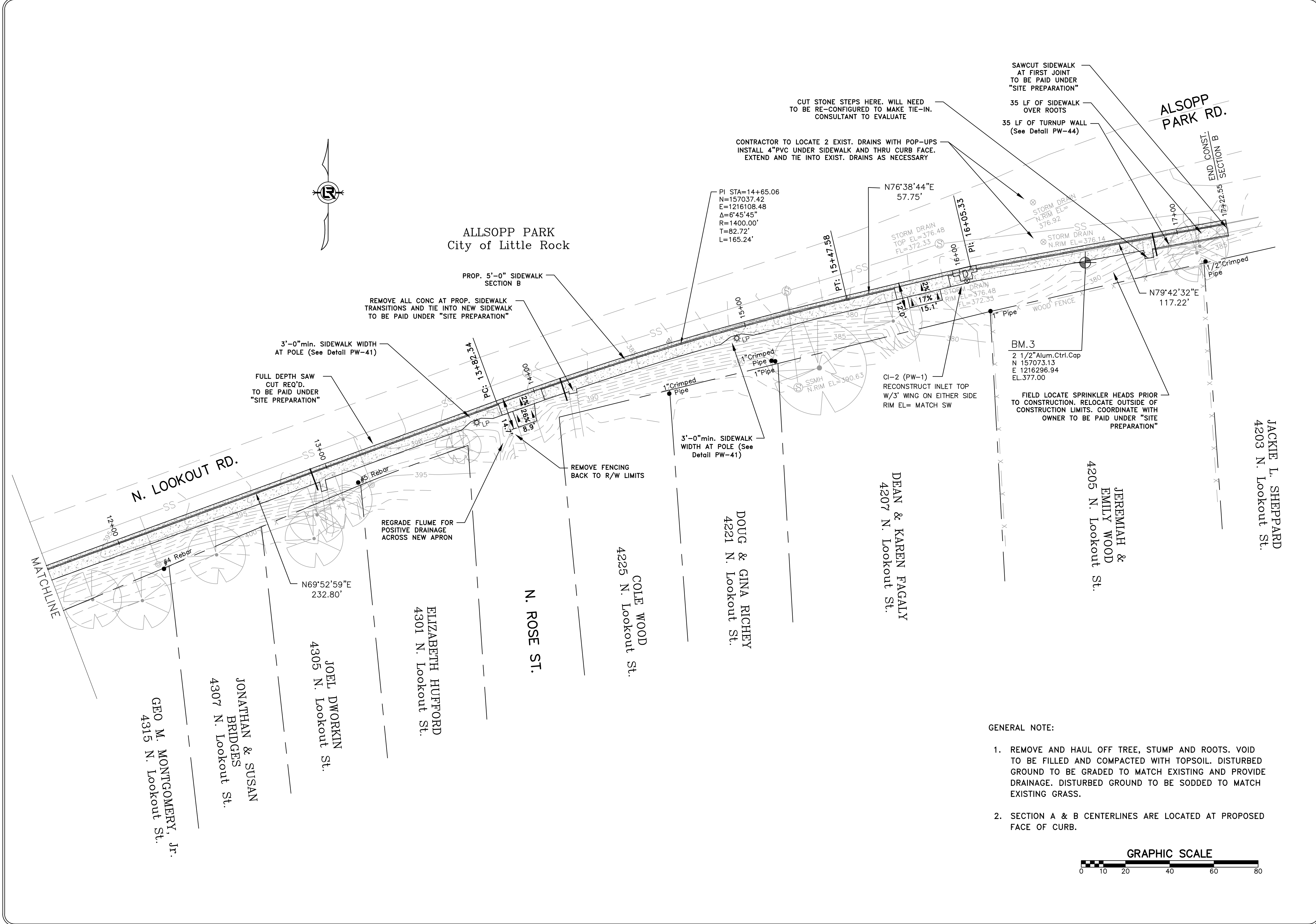
CITY OF LITTLE ROCK, ARKANSAS
 N. LOOKOUT RD. SIDEWALK REPLACEMENT
 PROPOSED LAYOUT (60%)

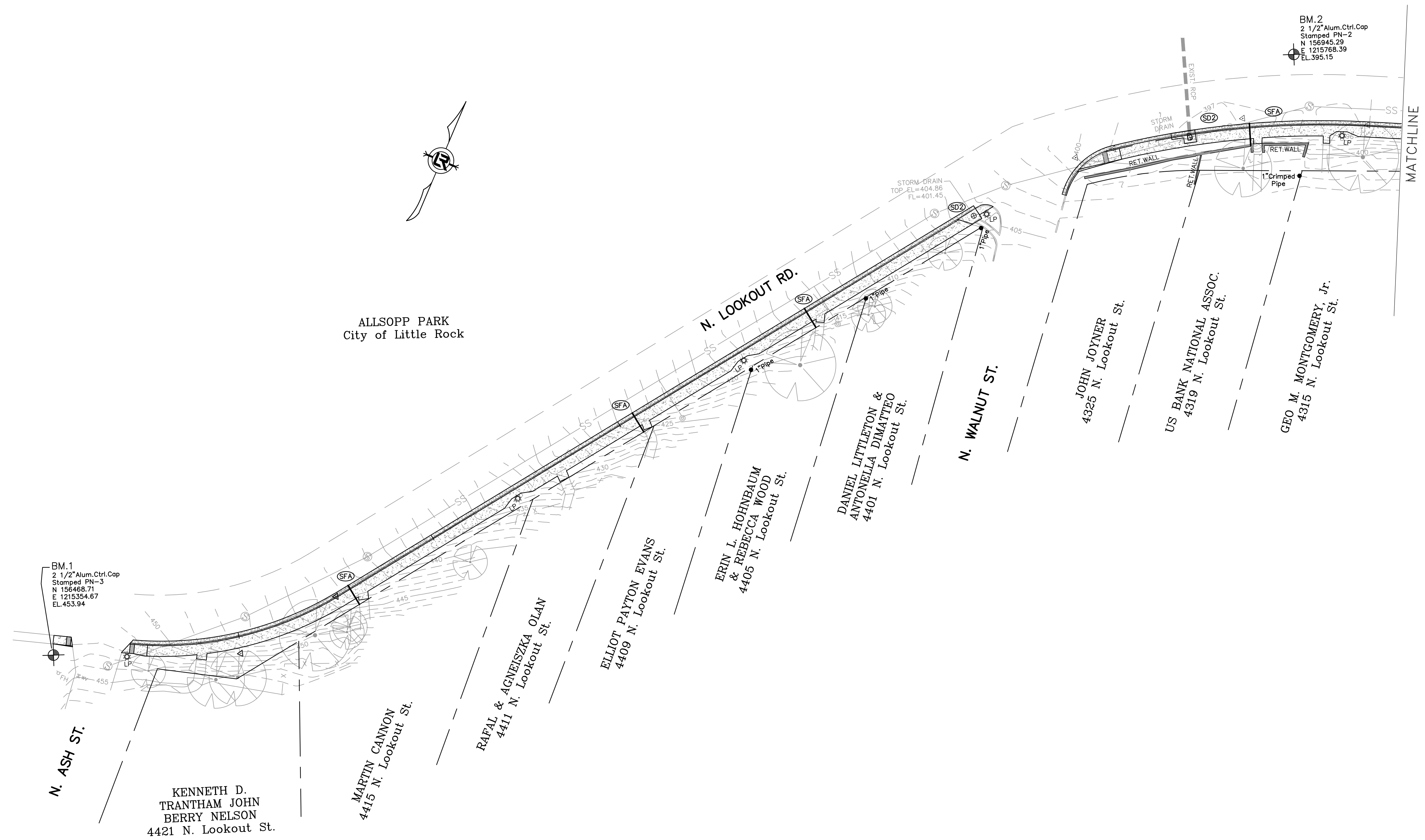


DEPARTMENT OF PUBLIC WORKS
 CIVIL ENGINEERING
 701 W. MARKHAM
 LITTLE ROCK, ARKANSAS 72201




DRAWN BY JRH
DESIGNED JRH
CHECKED JRH
DATE 2/18/19
SCALE 1"=20'
PROJECT NO. 03-17-SW-355
SHEET NO. C4

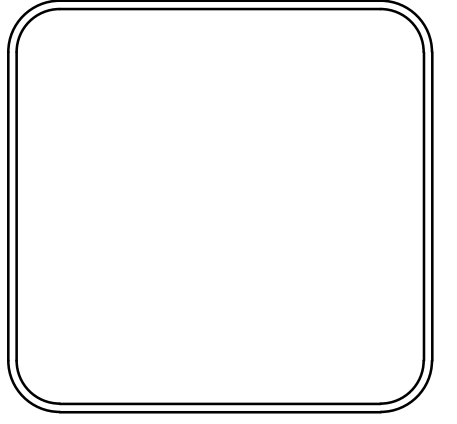




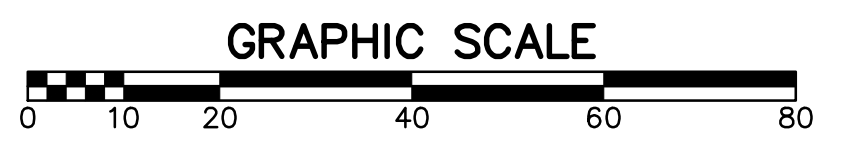
REVISIONS	DATE

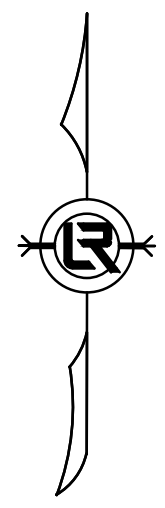
CITY OF LITTLE ROCK, ARKANSAS
N. LOOKOUT RD. SIDEWALK REPLACEMENT
EROSION CONTROL


 DEPARTMENT OF PUBLIC WORKS
 CIVIL ENGINEERING
 701 W. MARKHAM
 LITTLE ROCK, ARKANSAS 72201

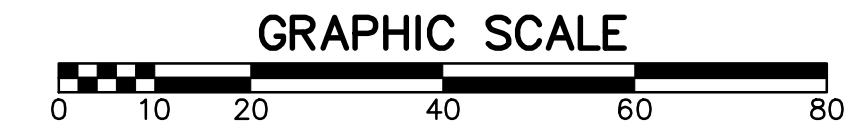
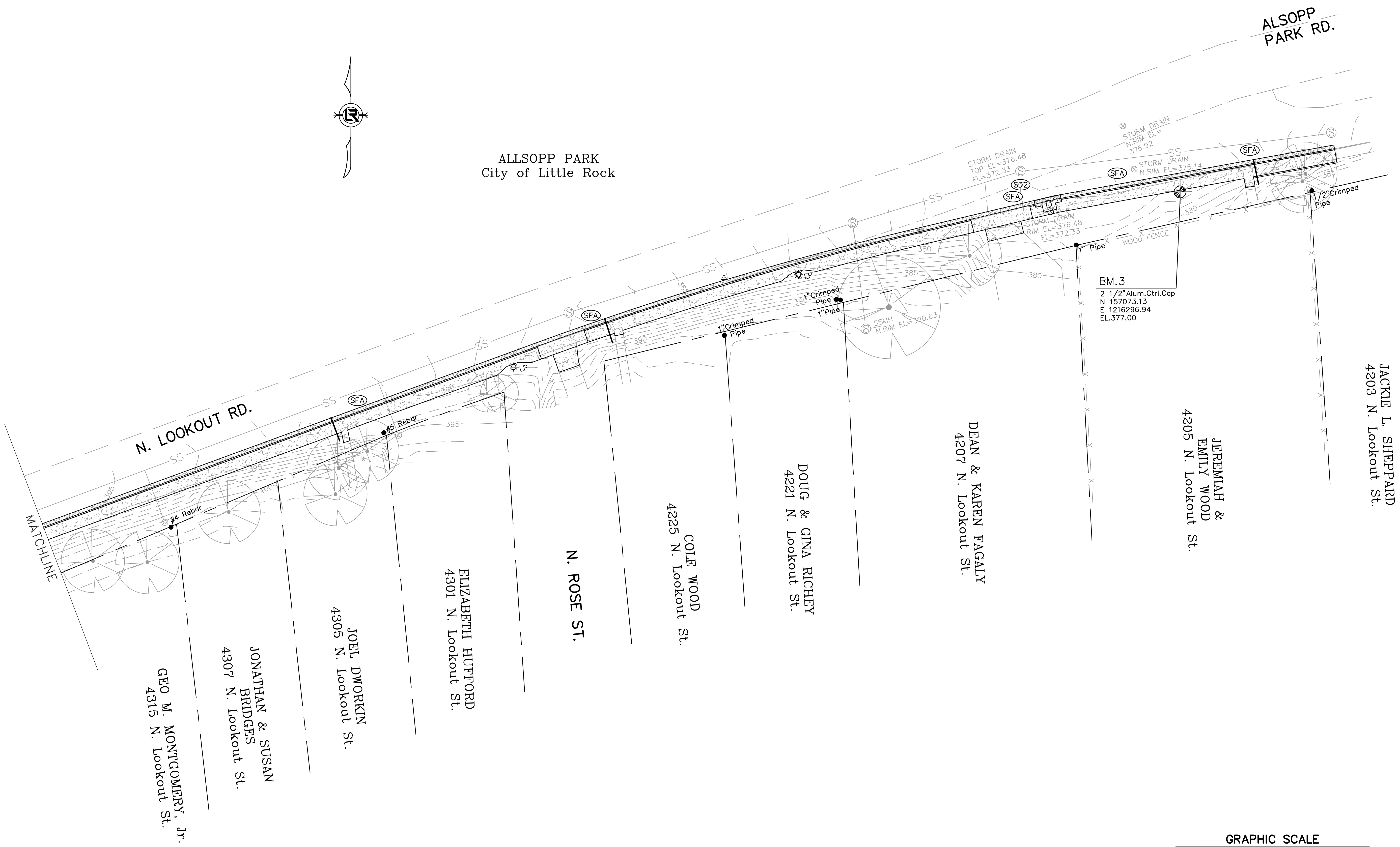


DRAWN BY	JRH
DESIGNED	JRH
CHECKED	JRH
DATE	2/18/19
SCALE	1"=20'
PROJECT NO.	03-17-SW-355
SHEET NO.	C5





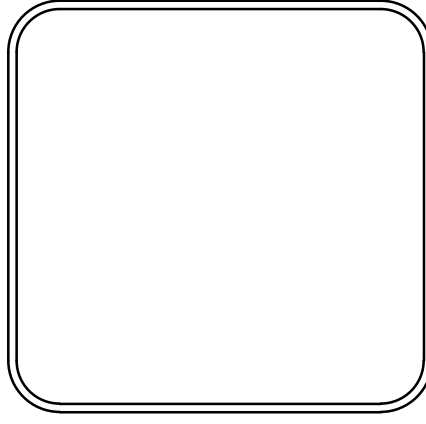
ALLSOPP PARK
City of Little Rock



REVISIONS	DATE

CITY OF LITTLE ROCK, ARKANSAS
 N. LOOKOUT RD. SIDEWALK REPLACEMENT
 EROSION CONTROL

10172
 LITTLE ROCK, ARKANSAS
 DEPARTMENT OF PUBLIC WORKS
 CIVIL ENGINEERING
 HAWKHAM
 701 W. MARKHAM



DRAWN BY	JRH
DESIGNED	JRH
CHECKED	JRH
DATE	2/18/19
SCALE	1"=20'
PROJECT NO.	03-17-SW-355
SHEET NO.	C6

JACKIE L. SHEPPARD
 4203 N. Lookout St.

JEREMIAH &
 EMILY WOOD
 4205 N. Lookout St.

DEAN & KAREN FAGALY
 4207 N. Lookout St.

DOUG & GINA RICHEY
 4221 N. Lookout St.

COLE WOOD
 4225 N. Lookout St.

N. ROSE ST.

ELIZABETH HUFFORD
 4301 N. Lookout St.

JOEL DWORKIN
 4305 N. Lookout St.

JONATHAN & SUSAN
 BRIDGES
 4307 N. Lookout St.

GEO M. MONTGOMERY, Jr.
 4315 N. Lookout St.