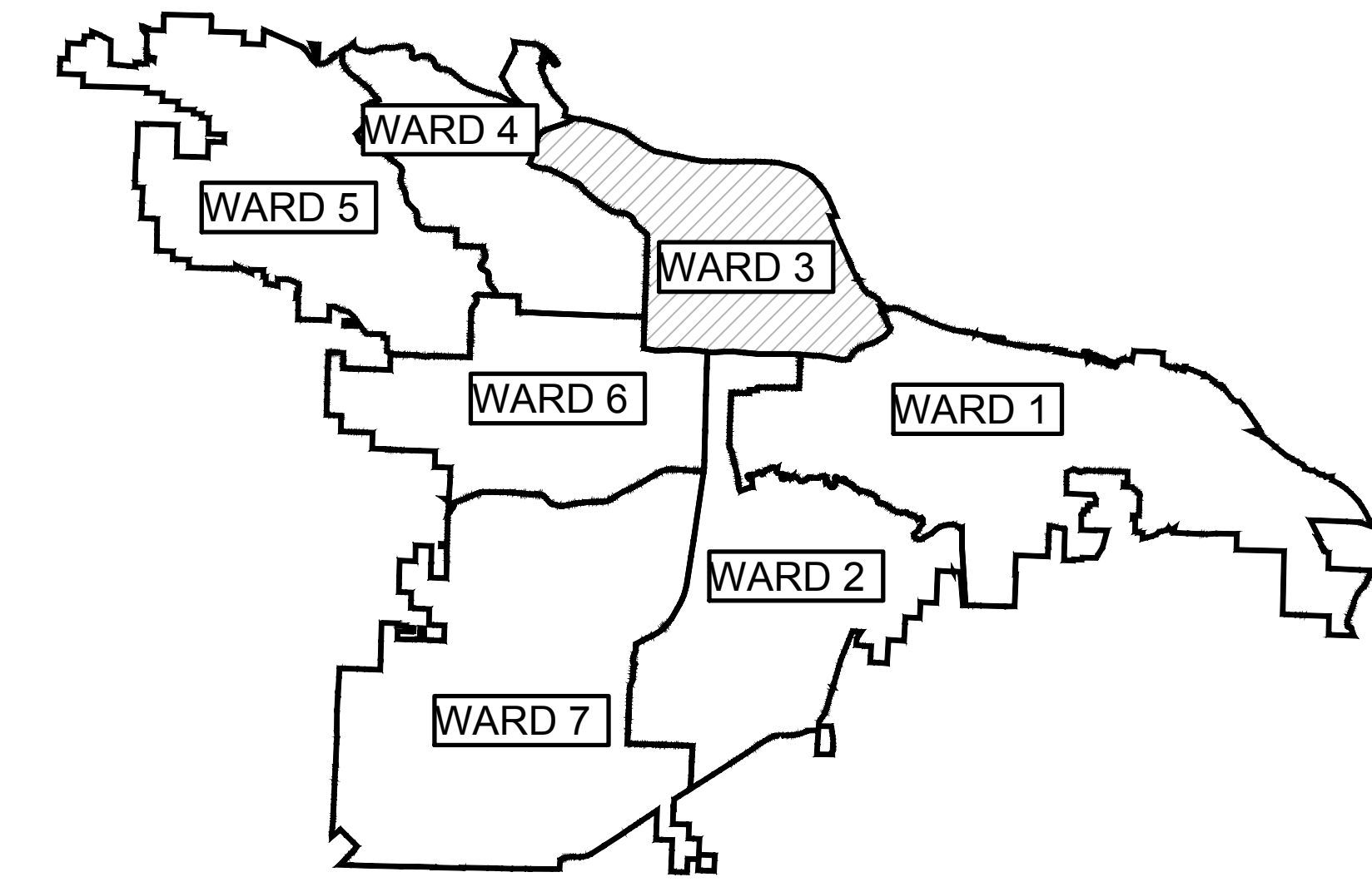
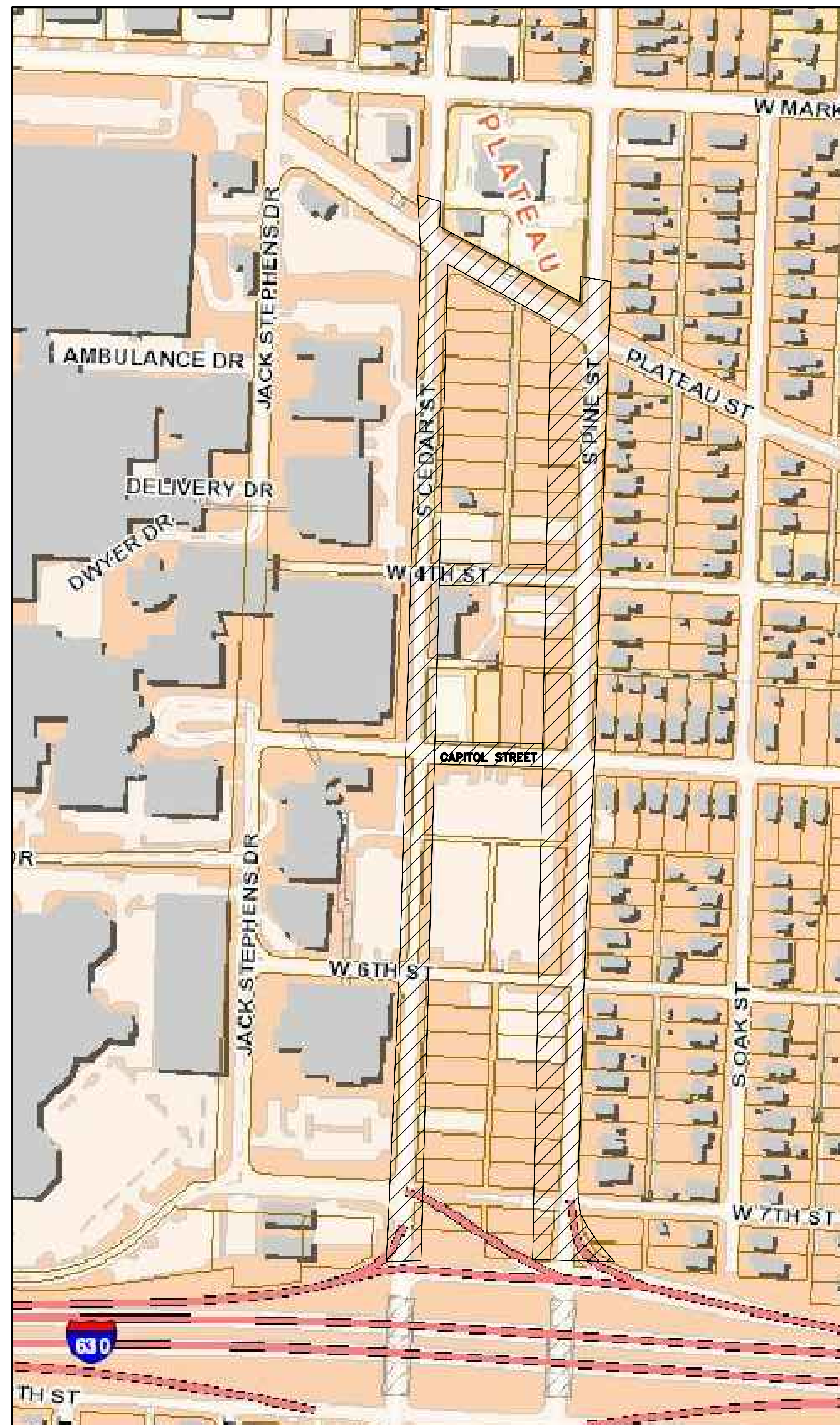


# PINE CEDAR BOULEVARD LITTLE ROCK, AR



PROJECT LOCATION - WARD 3

VICINITY MAP



SHEET LIST:

- C1.00: COVER SHEET
- C1.01: SITE PREPARATION PLAN - 1
- C1.02: SITE PREPARATION PLAN - 2
- C1.03: SITE PREPARATION PLAN - 3
- C2.01: ROADWAY PLAN AND PROFILE -1
- C2.02: ROADWAY PLAN AND PROFILE -2
- C2.03: ROADWAY PLAN AND PROFILE -3
- C2.04: ROADWAY PLAN AND PROFILE -4
- C3.01: TYPICAL SECTIONS



701 W. MARKHAM ST  
LITTLE ROCK, AR 72201



4301 W. MARKHAM ST  
LITTLE ROCK, AR 72205





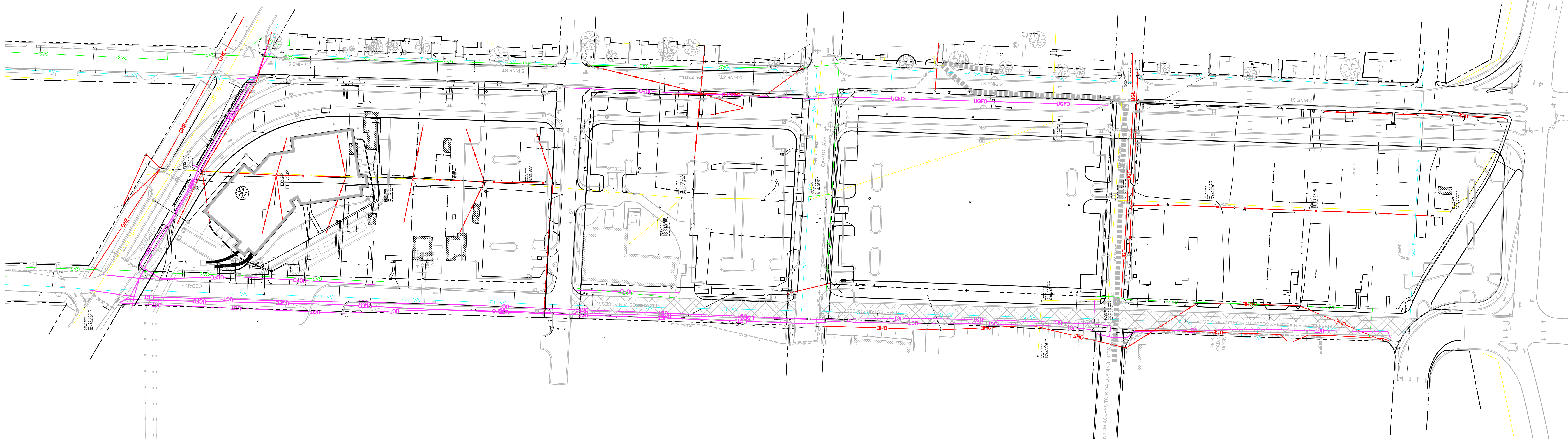
Water:  
Service Lines to be abandoned to demolished houses (in progress)  
Sewer Line north of 4th Street to be removed  
Water line north of 7th to remain  
Water line east of Pine to remain as possible - Pine Street to be cut - 1/2' between 200' south of 4th and 200' north of 4th.

Sewer:  
Service Lines to be abandoned to demolished houses (in progress)  
Sewer Line in Plateau to remain  
Sewer Line north of 4th running to Plateau to be abandoned/removed as necessary  
Sewer Line south of 4th running to Plateau to be abandoned/removed as necessary  
Sewer Line to be abandoned at Capitol, diverted east to Pine, existing to be abandoned  
Sewer Line in 6th to remain  
Sewer Line south of 6th to be abandoned

Electric:  
Overhead Line north of 4th Street to be removed  
Overhead Line south of Plateau to be removed/relocated  
Underground & Overhead line along Pine b/w 4th and Capitol to be relocated as necessary  
Underground & Overhead line along Pine b/w 4th and Capitol to be removed/relocated  
Sewer Churn/Cable to be removed by Gen Plant  
Sewer Churn/Cable to be removed by Gen Plant  
Underground in 6th St to remain  
Overhead Line south of 6th Street in alley to be removed  
Overhead Line west side of Pine at 7th to be removed

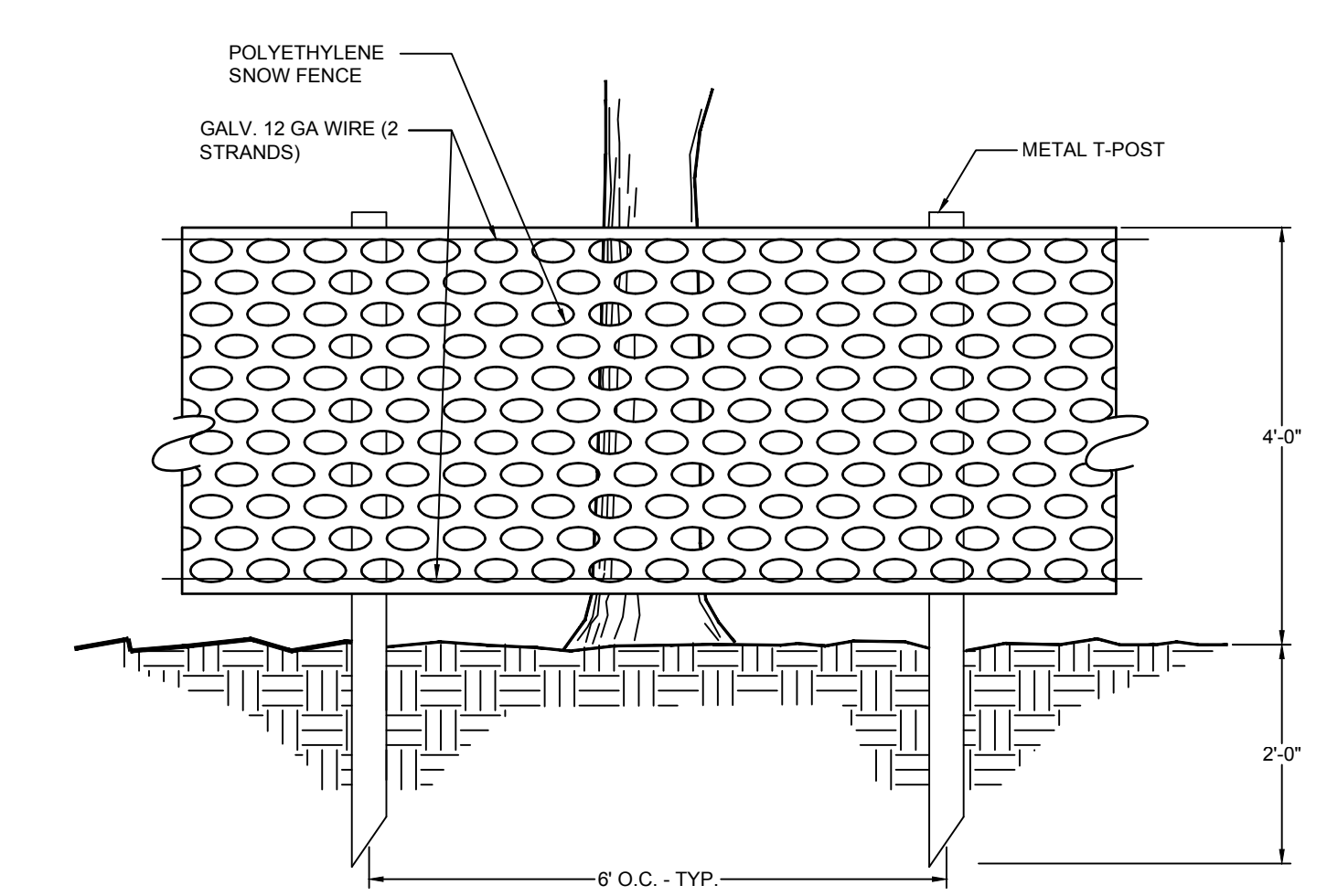
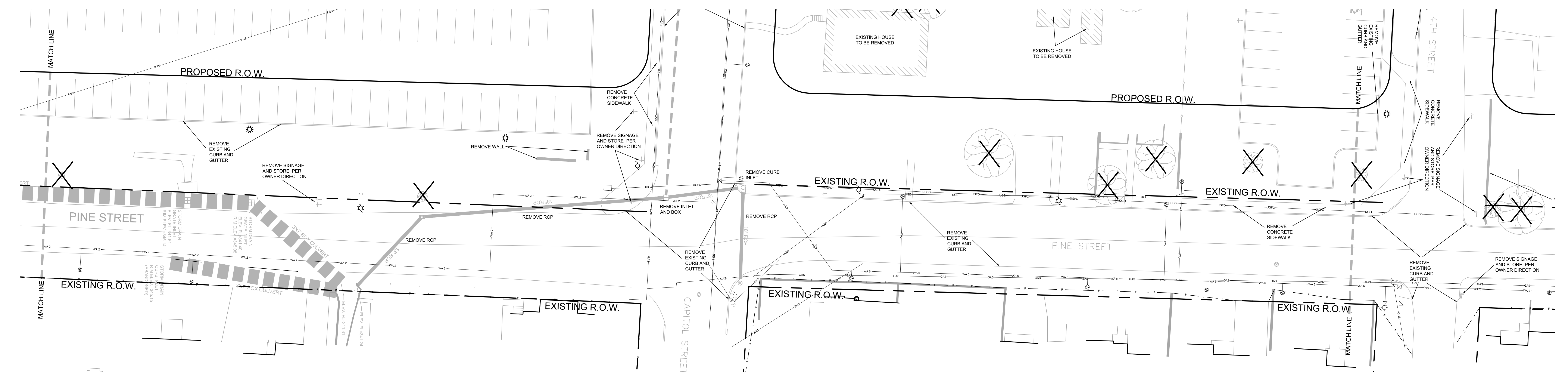
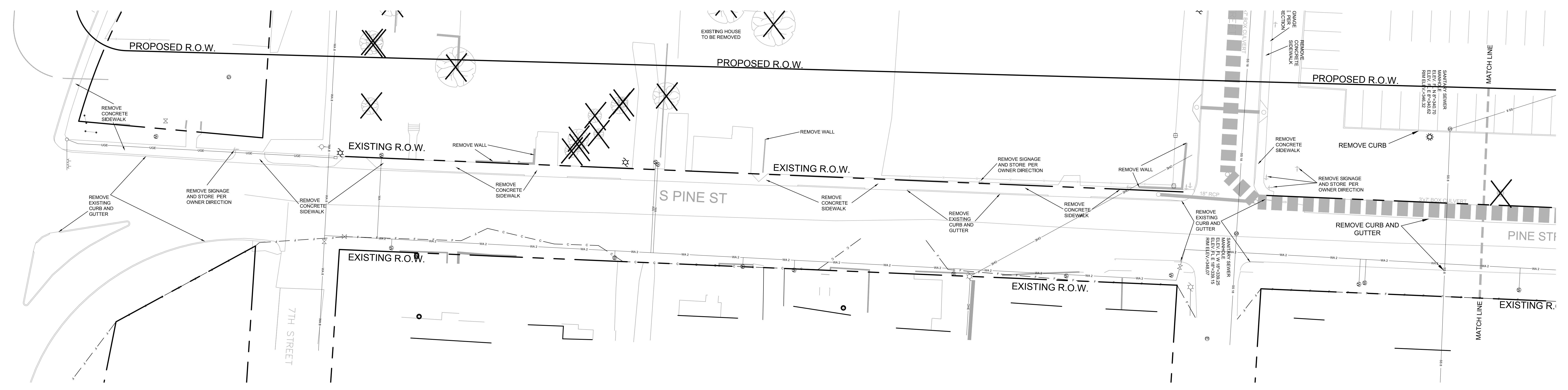
Gas:  
Gas line east of Pine to remain except 200' north of 4th to 200' south of 4th where cuts of 1/2' at street expected  
Gas line at Generator Plant to be relocated -100'  
Gas in Capitol to remain

Fiber/Comm:  
Comm/Fiber line south of Plateau to be relocated north in existing Plateau  
Fiber line at Gen Plant may need to be relocated  
Fiber line west side of existing Pine, location needed, determination needed regarding relocation or leave



N  
1"=50' printed at 36"x48"



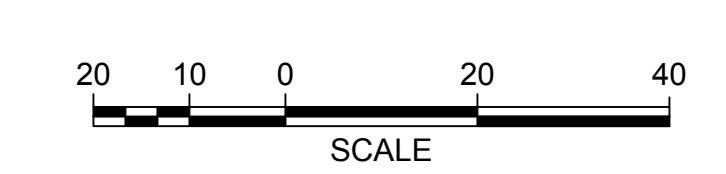
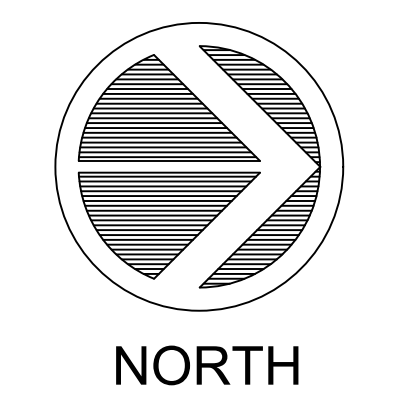


**X REMOVE TREE AND STUMP**

ALL OTHER TREES NOT SHOWN TO BE REMOVED ARE TO BE PROTECTED PER DETAIL 1.

TREE PROTECTION FENCING SHALL CONSIST OF ORANGE CONSTRUCTION FENCING AND T-POSTS PLACED AT THE PERIMETER OF THE TREE'S DRIP LINE (SEE DETAIL). STORAGE OF MATERIALS, PARKING OF VEHICLES OR EQUIPMENT, PLACEMENT OF CONSTRUCTION TRAILERS AND/OR FOOT AND VEHICULAR TRAFFIC INSIDE THE TREE PROTECTION FENCING SHALL BE STRICTLY FORBIDDEN.

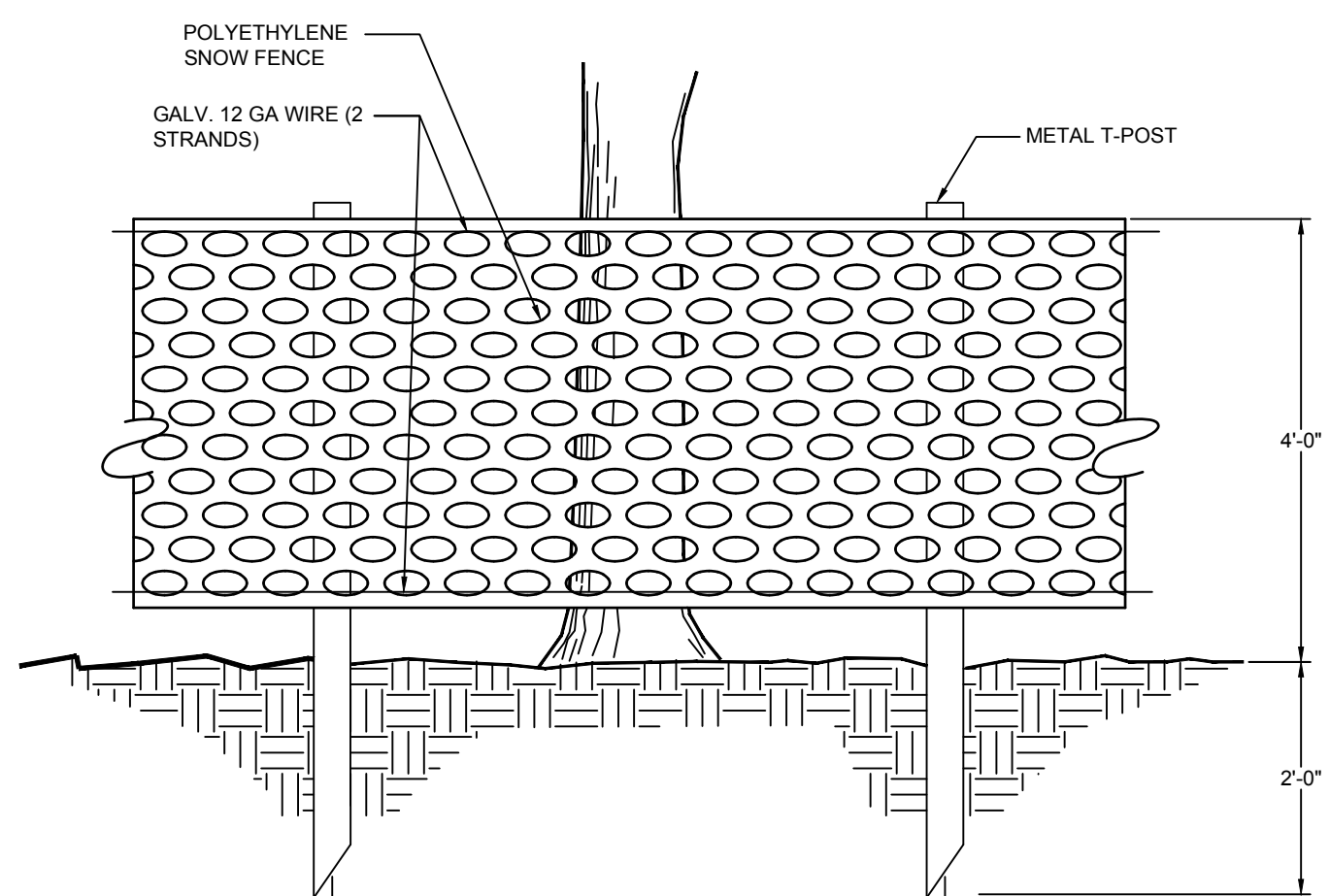
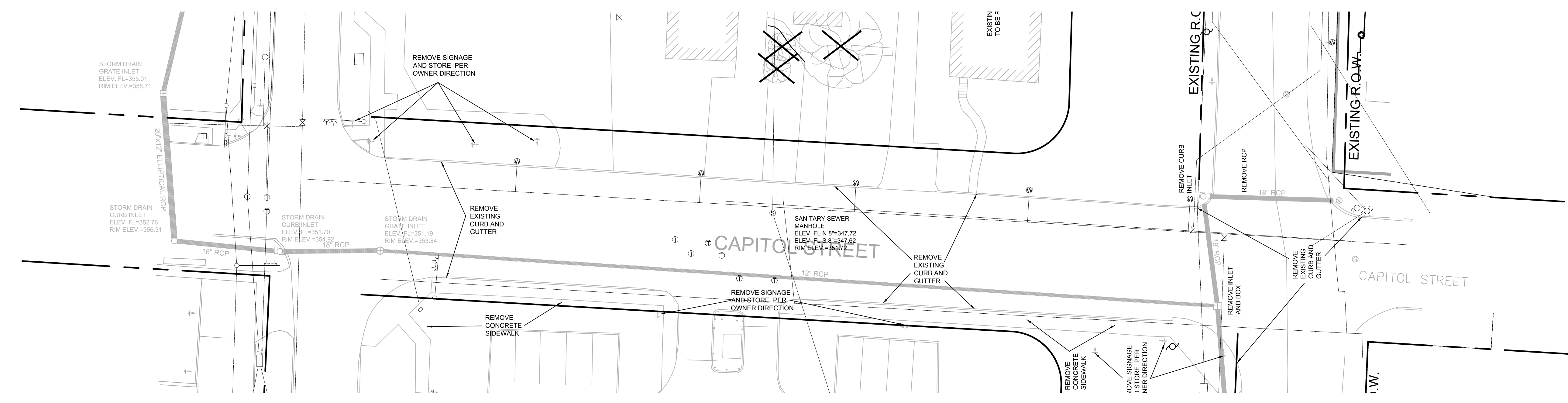
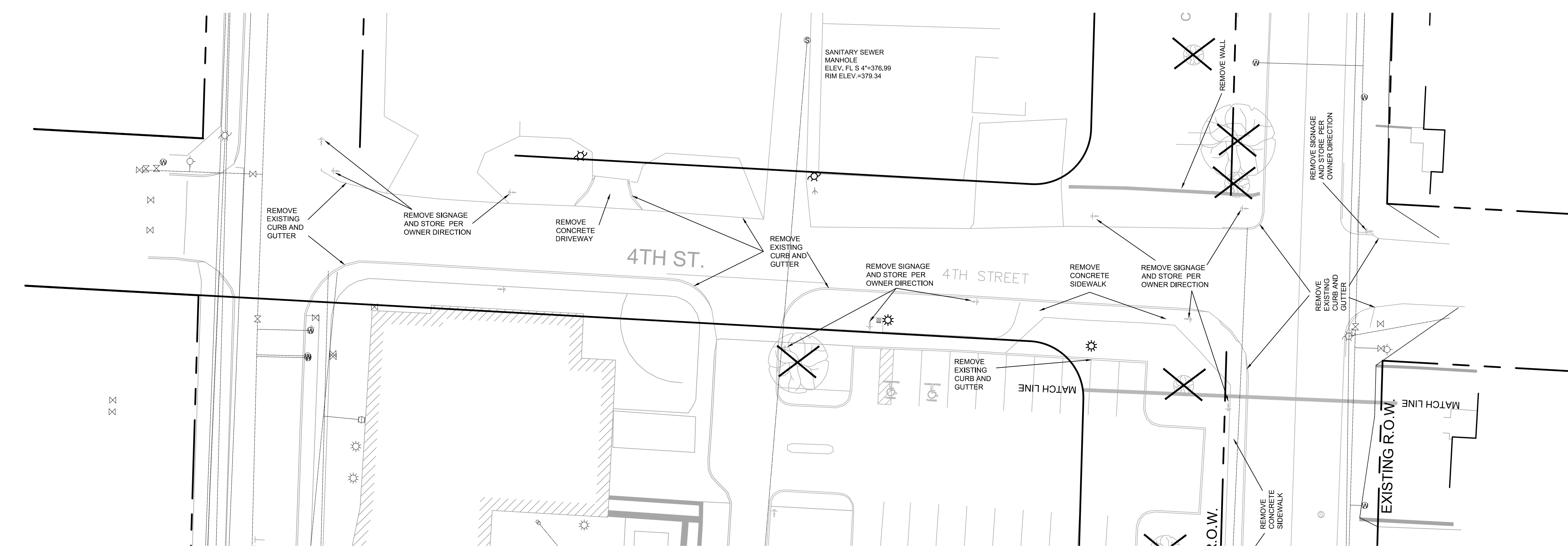
**1 TREE PROTECTION FENCE**  
 NTS



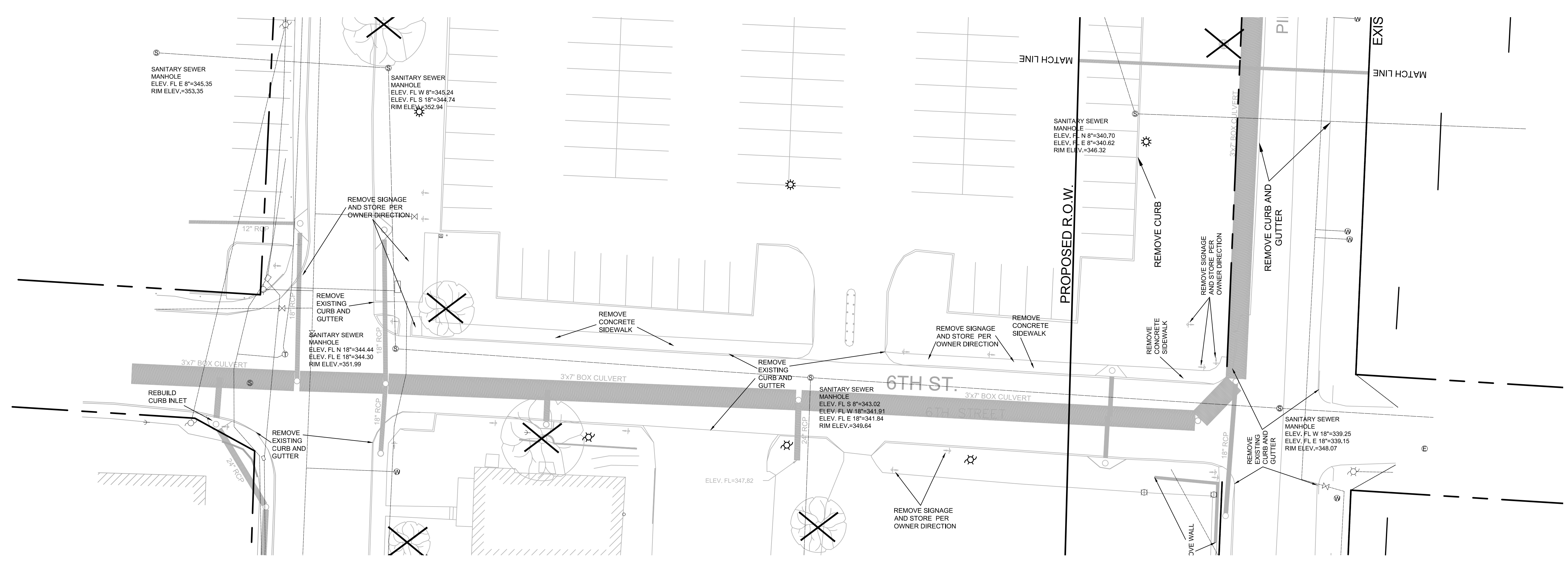








1 TREE PROTECTION FENCE  
 NTS



✕ REMOVE TREE AND STUMP

ALL OTHER TREES NOT SHOWN TO BE REMOVED ARE TO BE PROTECTED PER DETAIL 1.

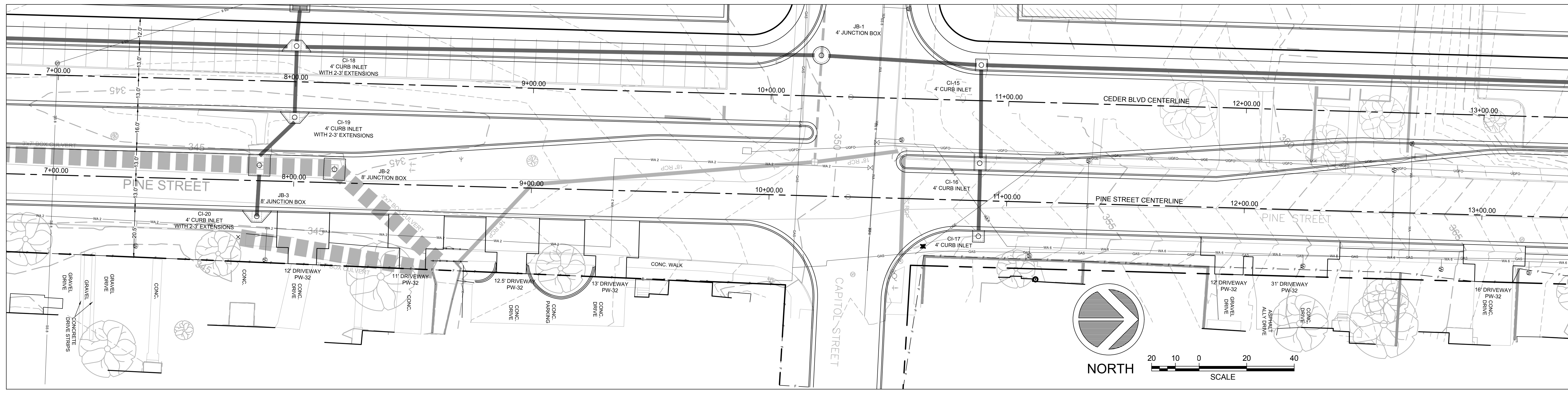
TREE PROTECTION FENCING SHALL CONSIST OF ORANGE CONSTRUCTION FENCING AND T-POSTS PLACED AT THE PERIMETER OF THE TREE'S DRIP LINE (SEE DETAIL). STORAGE OF MATERIALS, PARKING OF VEHICLES OR EQUIPMENT, PLACEMENT OF CONSTRUCTION TRAILERS AND/OR FOOT AND VEHICULAR TRAFFIC INSIDE THE TREE PROTECTION FENCING SHALL BE STRICTLY FORBIDDEN.



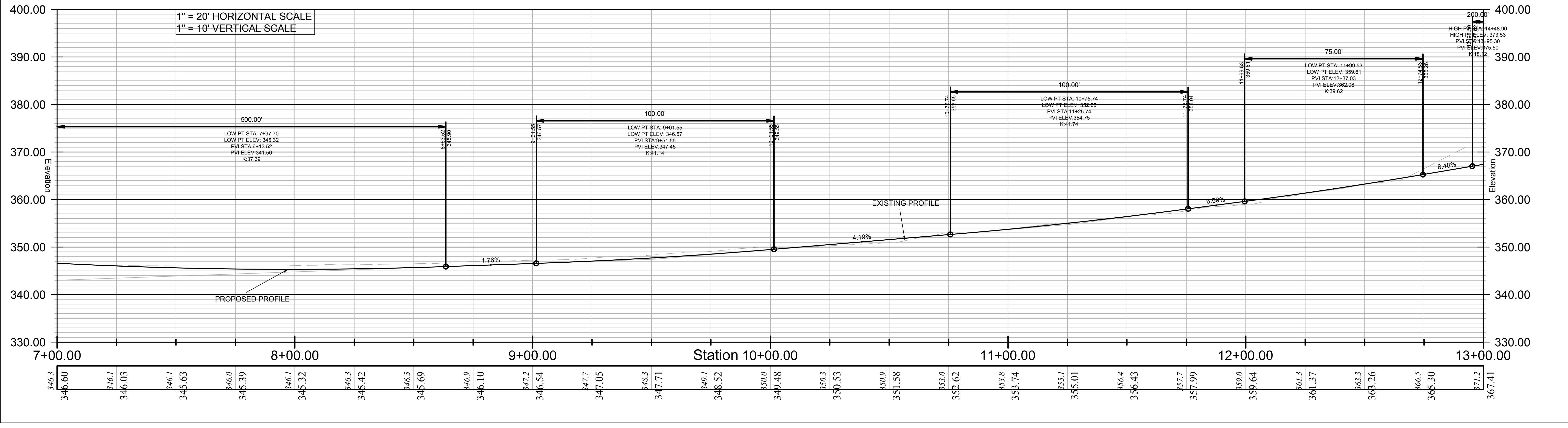




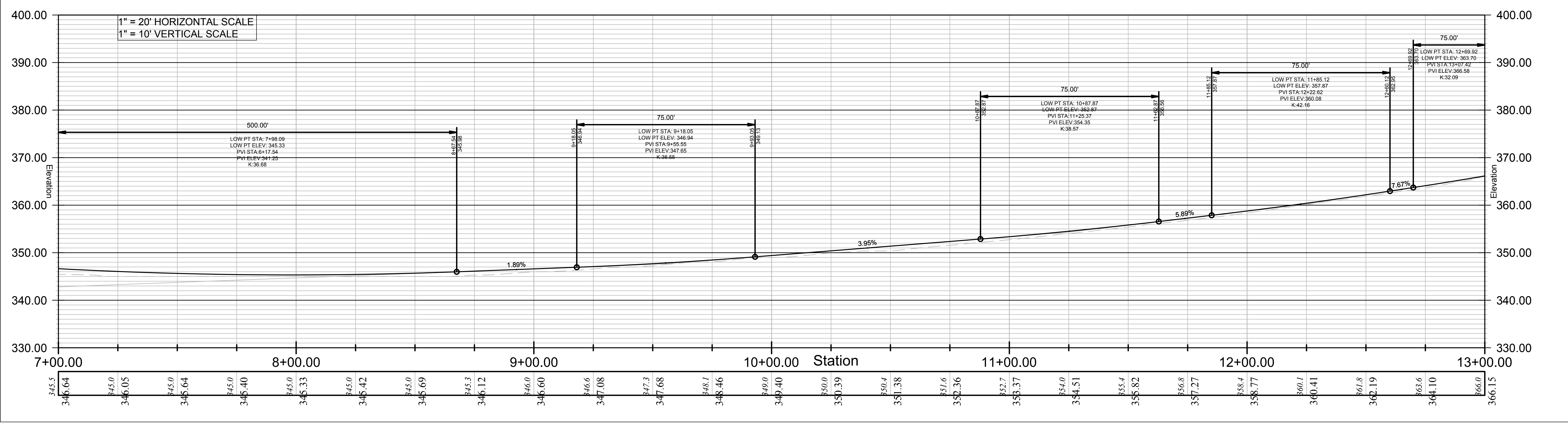




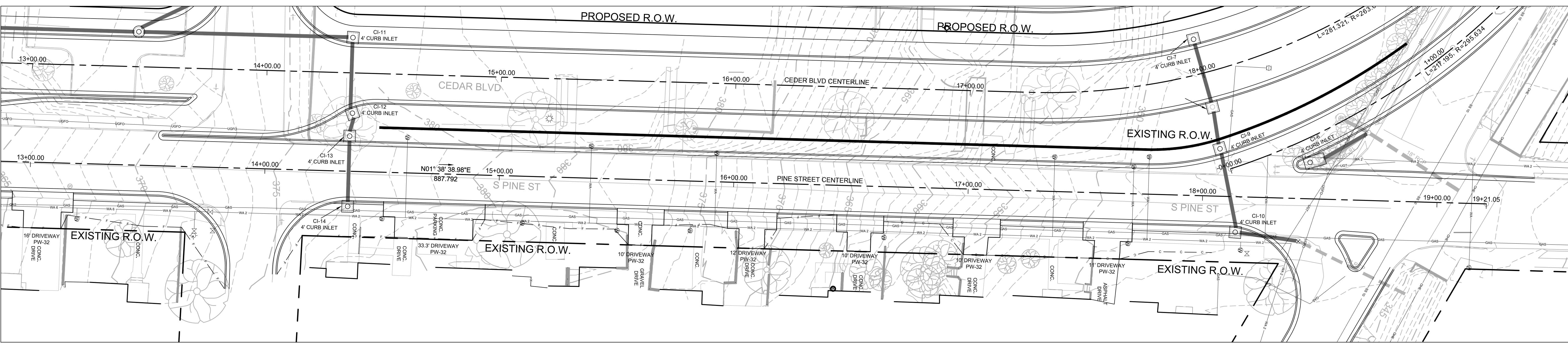
**CEDAR BLVD STA-7+00.00 TO 13+00.00**



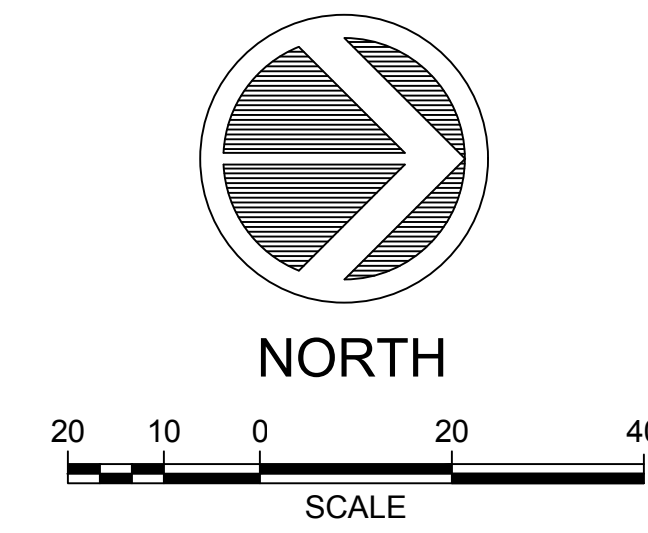
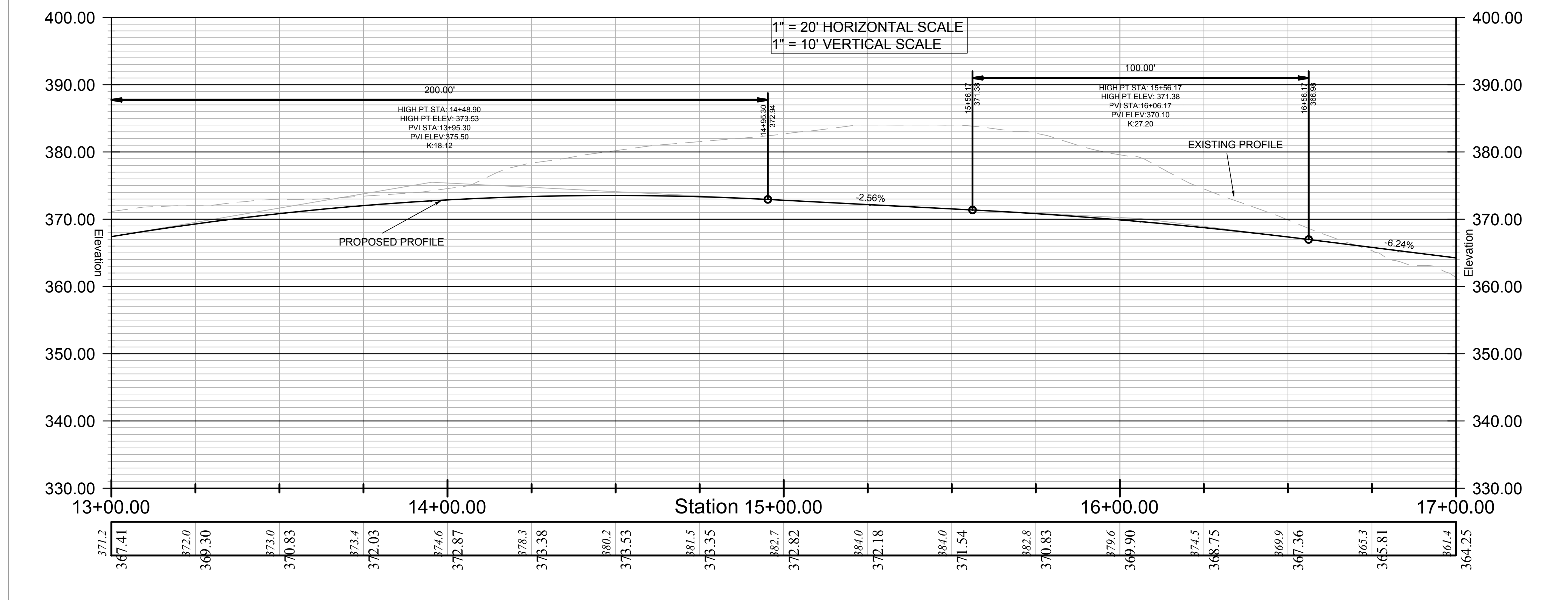
**PINE ST STA-7+00.00 TO 13+00.00**



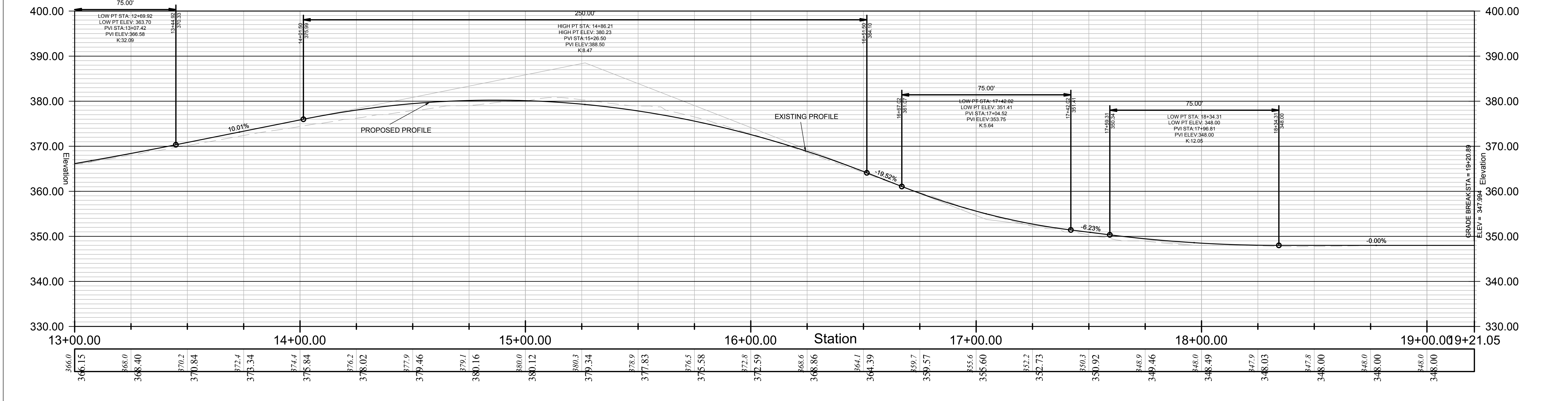




CEDAR BLVD STA-13+00.00 TO 17+00.00



PINE ST STA-13+00.00 TO 19+21.05









COPYRIGHT:	2013
SCALE:	HORIZONTAL: 1" = 20' VERTICAL: 1" = 10'
DRAWN BY:	IM
CHECKED BY:	BLK
APPROVED BY:	BLK
DATE:	08-27-2019

REVISIONS	

INCORPORATED  
CONSULTANTS  
DEVELOPMENT

PROJECT TITLE:  
 UAMS PINE & CEDAR  
 LITTLE ROCK, ARKANSAS  
 SHEET TITLE:  
 TYPICAL SECTIONS

PROJECT NO:  
 13-110  
 SHEET NO:

**C3.01**

