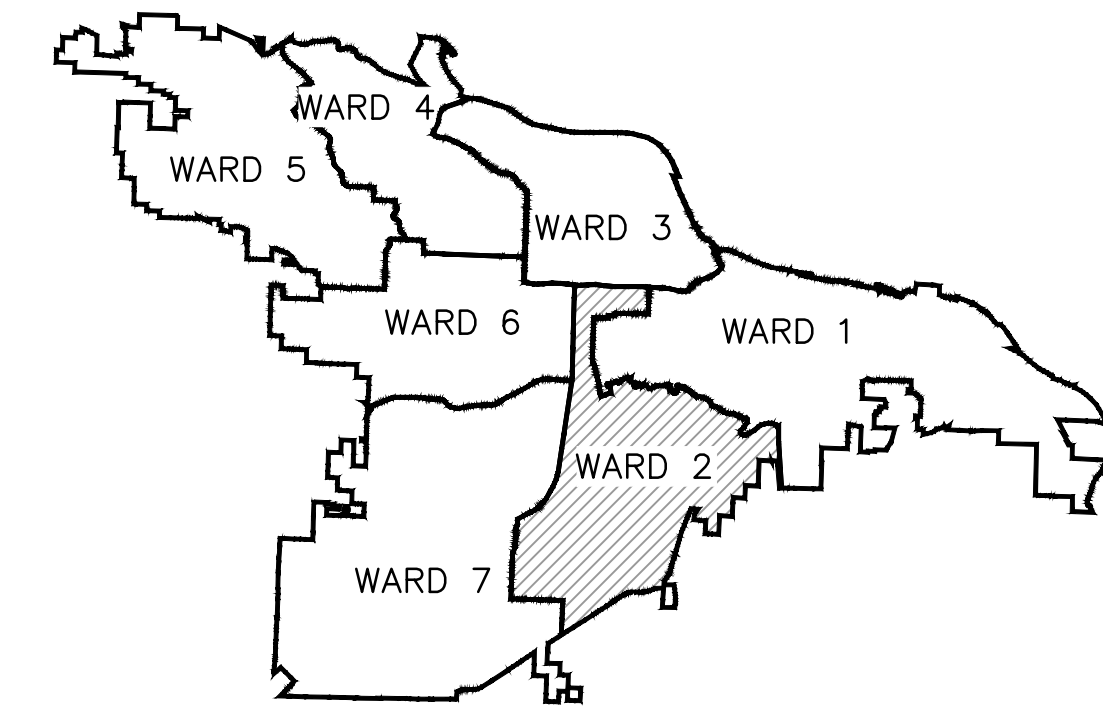


MARYLAND AVE RECONSTRUCTION

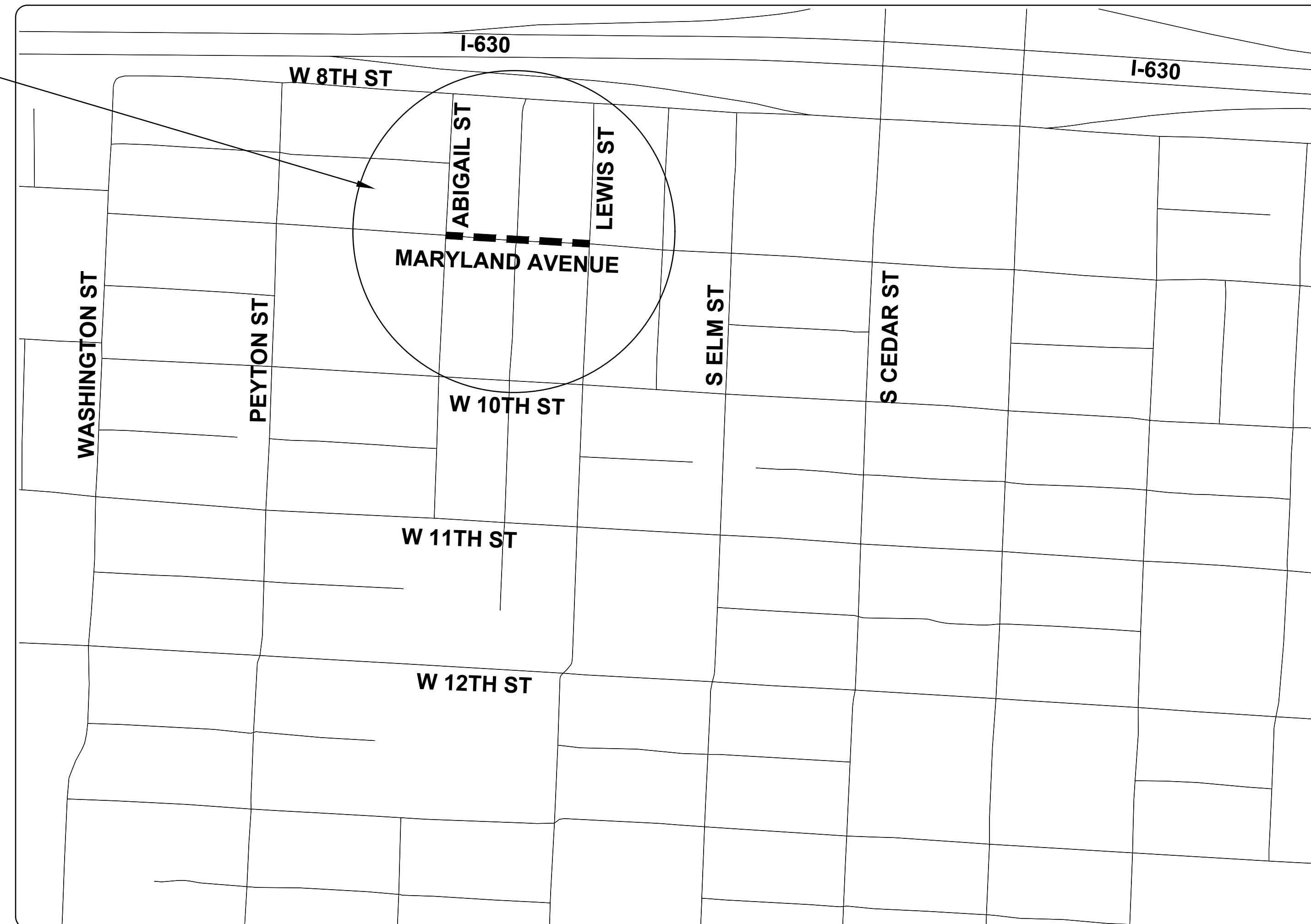
ABIGAIL ST TO LEWIS ST

CLR PROJECT #02-17-ST-83

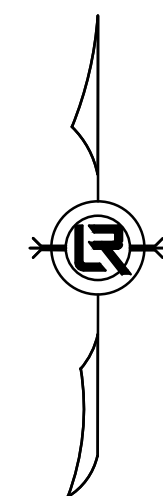


PROJECT LOCATION - WARD 2

PROJECT LOCATION



SHEET NO.	TITLE
C0	COVER SHEET
C1	LEGEND AND QUANTITIES
C2	TYPICAL SECTION
C3	EXISTING CONDITION
C4	PLAN AND PROFILE
C5	CROSS SECTIONS
C6	SURVEY CONTROL PLAN
C7	EROSION CONTROL PLAN - PHASE 1
C8	EROSION CONTROL PLAN - PHASES 2 & 3
C9	MAINTENANCE OF TRAFFIC PLAN



2019-2021
BOND PROGRAM

DEPARTMENT OF PUBLIC WORKS
CIVIL ENGINEERING
701 WEST MARKHAM STREET
LITTLE ROCK, ARKANSAS 72201



Know what's below.
Call before you dig.

GNE

Designing our client's success

GarNat Engineering, LLC

P.O. Box 116 (72018)
2909 Military Road
Benton, AR 72015

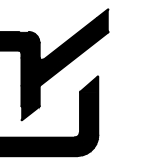
Ph (501) 408-4650
Fx (888) 900-3068
garnatengineering@gmail.com

REVISIONS	DATE

CITY OF LITTLE ROCK, ARKANSAS
MARYLAND AVE RECONSTRUCTION

COVER SHEET

DEPARTMENT OF PUBLIC WORKS
CIVIL ENGINEERING
701 W. MARKHAM
LITTLE ROCK, ARKANSAS 72201



08-02-2019

DRAWN BY
NHC
DESIGNED
VJW & NHC
CHECKED
VJW
DATE
08-02-2019
SCALE
N.T.S.

PROJECT NO.
02-17-ST-83

SHEET NO.

C0

REVISIONS	DATE

CLR PROJECT# 02-17-ST-83			
MARYLAND AVE- RECONSTRUCTION -QUANTITIES			
2-Aug-19			
ITEM	DESCRIPTION	UNIT	QUANTITY
2.01	SITE PREPARATION	LS	1
3.01	UNCLASSIFIED EXCAVATION	CY	150
3.06	BORROW MATERIAL	CY	150
3.40	TOP SOIL	CY	25
4.01	AGGREGATE BASE COURSE	TON	55
5.01	TACK COAT	GAL	65
6.10	ACHM SURFACE COURSE (TYPE 2)	TON	130
7.06	CONCRETE DRIVEWAY AND APRON (6" THICK)	SF	1300
7.08	ALLEY TURNOUT (8" THICK)	SF	350
8.01	CONCRETE CURB AND GUTTER (CLASS 3)	LF	500
9.03	CONCRETE GUTTER (SPECIAL)	SF	160
9.10	CONCRETE SIDEWALK	SF	1200
10.07	WING 3' EXTENSION	EA	1
10.80	REBUILD INLET TOP	EA	1
14.01	SOLID SOD, BERMUDA	SY	220
16.01	MAINTENANCE OF TRAFFIC	LS	1
18.50	ACCESS RAMP	SF	120
18.55	WATER FOR DUST CONTROL	GAL	10000
19.01	FINAL CLEANUP	LS	1
23.01	B STONE	TON	270
24.05	ROCK DAM (RD)	CY	2
24.06	SEDIMENT BARRIER, SILT FENCE (SD1)	EA	1
24.09	SEDIMENT BARRIER, BLOCK (SD-4)	EA	2
24.12	SILT FENCE (TYPE A)	LF	320
26.10	TRENCH EXCAVATION & SAFETY	LS	1

EXISTING	PROPOSED
IRON ROD	○ IR
PK NAIL	○ PK
R.R. SPIKE	○ RR(Sp)
CONC. MONUMENT	□ CM
WATER VALVE	⊗ WV
WATER METER	□ WM
FIRE HYDRANT	⊕ FH
GAS METER	⊕ GM
GAS VALVE	⊕ GV
CLEAN-OUT	○ CO
GUARD POST (BOLLARD)	• GP
SIGN POST	—
BENCHMARK	⊕
SANITARY SEWER MANHOLE	⊕ S
TELEPHONE MANHOLE	⊕ T
ELECTRIC MANHOLE	⊕ E
TELEPHONE BOX	⊕
ELECTRIC BOX	⊕
CABLE BOX	⊕
UTILITY POLE	⊕
GUY WIRE	—
LIGHT POLE	⊕
POST OR POLE (TYPE AS NOTED)	⊕
MAILBOX	⊕
DECIDUOUS TREE	⊕
EVERGREEN/CONIFEROUS TREE	⊕
BUSH	⊕
PROPERTY LINE	—
SETBACK LINE	—
EASEMENT LINE	—
CURB	—
FENCE	— X — X —
OVERHEAD UTILITY	— OHP — OHP —
UNDERGROUND TELEPHONE	— UGT — UGT — UGT —
UNDERGROUND ELECTRIC	— UGE — UGE — UGE —
WATER LINE	— 8"W — 8"W — 8"W —
SEWER LINE	— S — S — S — S —
GAS LINE	— GAS — GAS — GAS —
STORM SEWER/CULVERT	— 24" CMP/RCP/DIP —
CONTOUR LINE	— 650 —
CONTOUR	○ 25.00
SPOT ELEVATION	○ 25.50
SPOT CURB ELEVATION	○ 25.00
STORM SEWER — PIPE	—
STORM SEWER — MITERED END SECTION	—
STORM SEWER — GRATE INLET	—
STORM SEWER — JUNCTION BOX	—
STORM SEWER — FLARED END SECTION	—
STORM SEWER — HEADWALL	—
STORM SEWER — INLET WITH SINGLE EXTENSION	—
STORM SEWER — INLET WITH DOUBLE EXTENSION	—
STORM SEWER — AREA INLET	—
GRADE BREAK LINE	—
HIGH POINT	HP
LOW POINT	LP
CUT LINE	— C —
FILL LINE	— F —
SANITARY SEWER PIPE	—
SANITARY SEWER MANHOLE	⊕
CURB	—
CONCRETE	—
CONSTRUCTION — ENTRANCE/EXIT	⊕ CO
CHECK DAM	⊕ CD
DIVERSION BERM	⊕ DI
DOWNDRAIN STRUCTURE — TEMPORARY	⊕ DN
ROCK DAM	⊕ RD
SEDIMENT BARRIER — SILT FENCE	⊕ SD1
SEDIMENT BARRIER — GRAVEL RING	⊕ SD2
SEDIMENT BARRIER — BLOCK & GRAVEL	⊕ SD3
SEDIMENT BARRIER — BLOCK	⊕ SD4
TEMPORARY SEDIMENT BASIN	⊕ SBT
SILT FENCE — TYPE A	⊕ SFA
SILT FENCE — TYPE B	⊕ SFB
SILT FENCE — TYPE C	⊕ SFC
STORM DRAIN OUTLET PROTECTION	⊕ ST
SURFACE ROUGHENING	⊕ SU
DISTURBED AREA STABILIZATION —TEMPORARY STABILIZATION	⊕ TS1
DISTURBED AREA STABILIZATION —TEMPORARY GRASSING	⊕ TS2
DISTURBED AREA STABILIZATION —PERMANENT GRASSING	⊕ TS3
MATting/BLANKETS	⊕ Mb

CITY OF LITTLE ROCK, ARKANSAS
 MARYLAND AVE RECONSTRUCTION
 LEGEND & QUANTITIES

DEPARTMENT OF PUBLIC WORKS
 CIVIL ENGINEERING
 701 W. MARKHAM
 LITTLE ROCK, ARKANSAS 72201



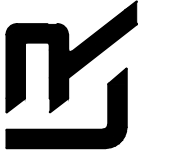
DRAWN BY
 NHC
 DESIGNED
 VJW & NHC
 CHECKED
 VJW
 DATE
 08-02-2019
 SCALE
 N.T.S.
 PROJECT NO.
 02-17-ST-83
 SHEET NO.
 C1

CITY OF LITTLE ROCK, ARKANSAS
MARYLAND AVE RECONSTRUCTION

TYPICAL SECTION

DEPARTMENT OF PUBLIC WORKS
CIVIL ENGINEERING
701 W. MARKHAM

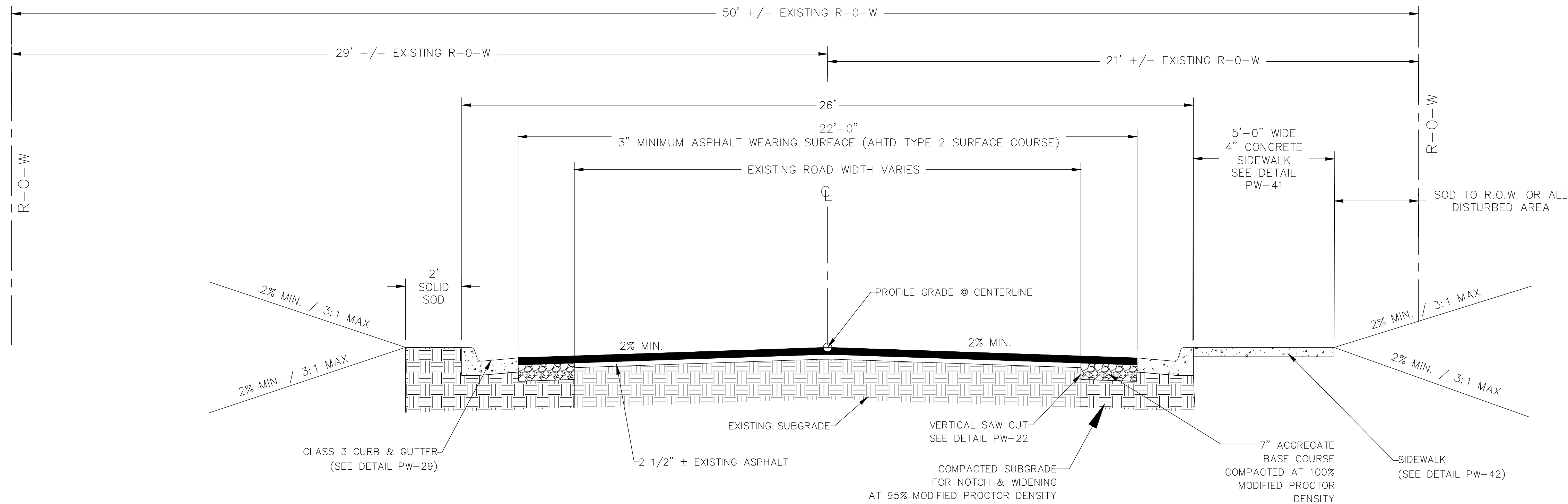
LITTLE ROCK, ARKANSAS 72201



08-02-2019

DRAWN BY
ATV
DESIGNED
VJW & NHC
CHECKED
VJW
DATE
08-02-2019
SCALE
3/8" = 1'-0"
PROJECT NO.
02-17-ST-83
SHEET NO.

C2



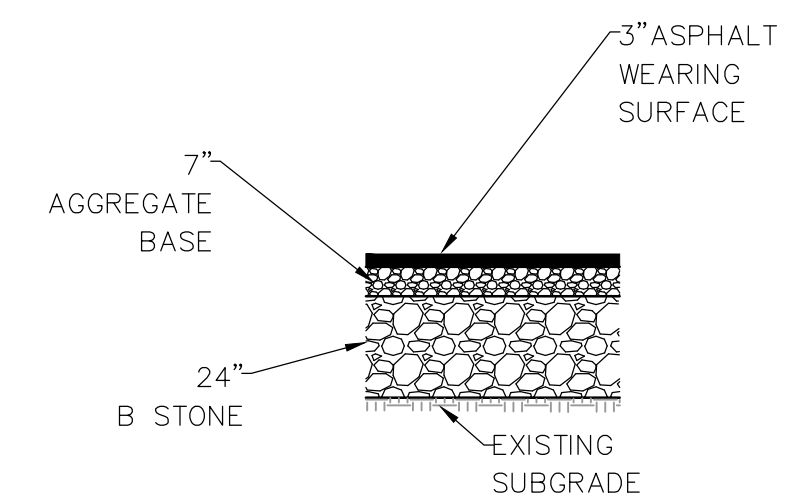
TYPICAL STREET SECTION MARYLAND AVE

SCALE: 3/8" = 1'-0"

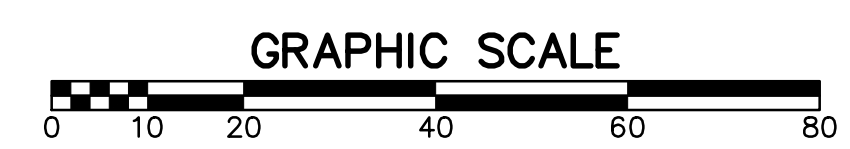
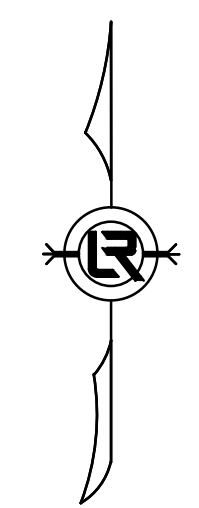
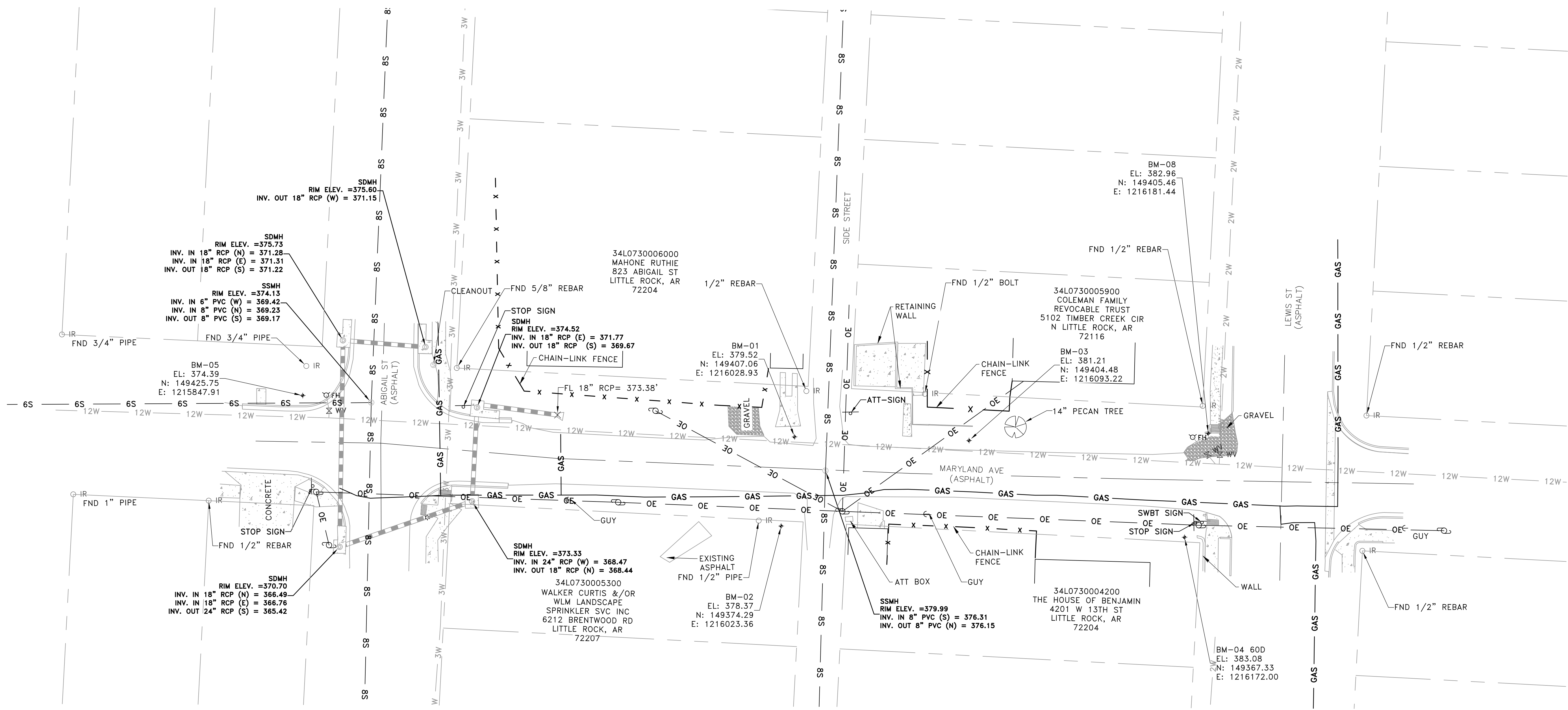
STA 1+25 TO STA 4+16

GENERAL STREET CONSTRUCTION NOTES:

1. WORK ASSOCIATED WITH THIS DETAIL COMPLY WITH LITTLE ROCK PW-22 DETAIL.
2. IF OR WHERE DIRECTED, UNDERCUT, EXCAVATE, AND RECONSTRUCT SUBGRADE WITH B STONE PER DETAIL A AS DIRECTED BY ENGINEER TO REPAIR SUBGRADE FAILURES.



DETAIL A



REVISIONS	DATE

CITY OF LITTLE ROCK, ARKANSAS
MARYLAND AVE RECONSTRUCTION
 EXISTING CONDITION

DEPARTMENT OF PUBLIC WORKS
 CIVIL ENGINEERING
 701 W. MARKHAM
 LITTLE ROCK, ARKANSAS 72201



DRAWN BY
ATV
 DESIGNED
NHC & VJW
 CHECKED
VJW
 DATE
08-02-2019
 SCALE
1"=20' (22X34)
 PROJECT NO.
02-17-ST-83
 SHEET NO.
C3

REVISIONS	DATE

CITY OF LITTLE ROCK, ARKANSAS
MARYLAND AVE RECONSTRUCTION
PLAN & PROFILE

DEPARTMENT OF PUBLIC WORKS
 CIVIL ENGINEERING
 701 W. MARKHAM
 LITTLE ROCK, ARKANSAS 72201



DRAWN BY
ATV

DESIGNED
NHC & VJW

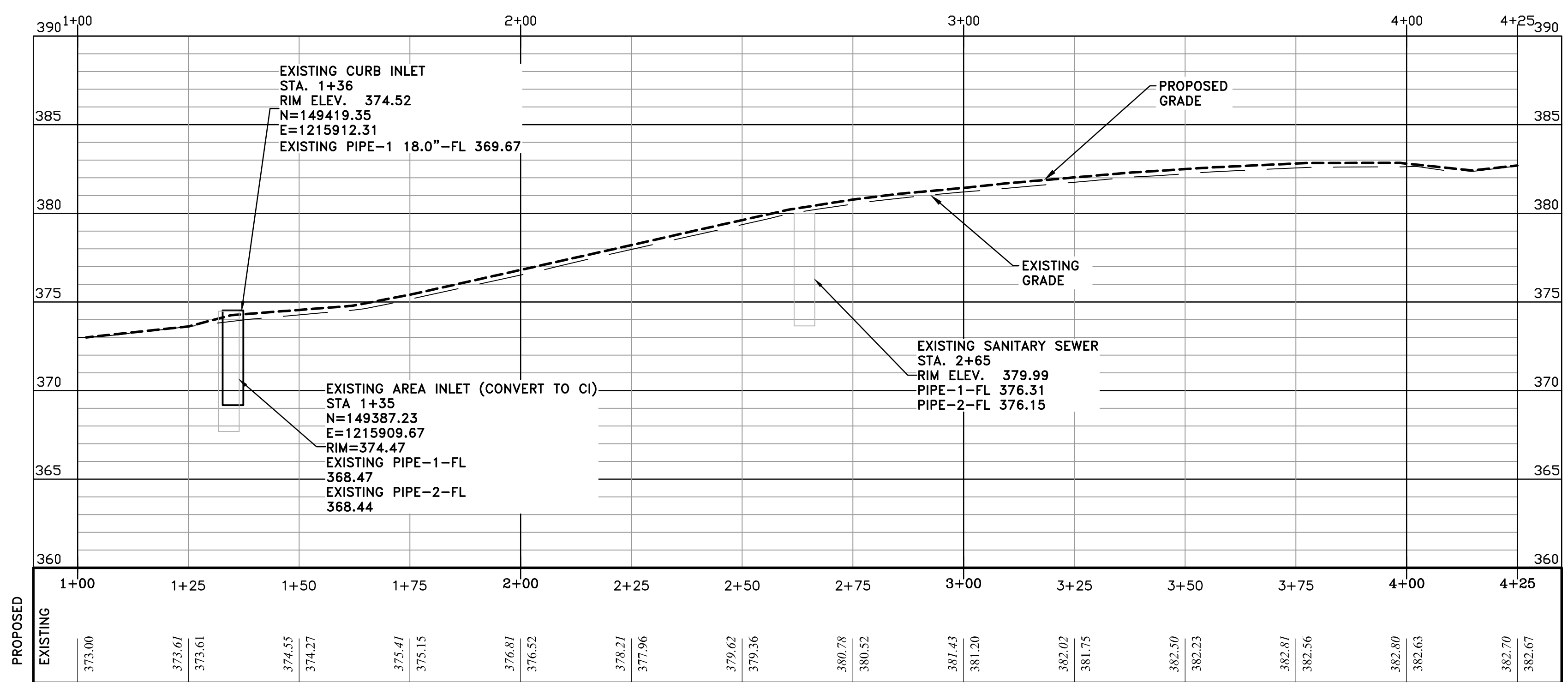
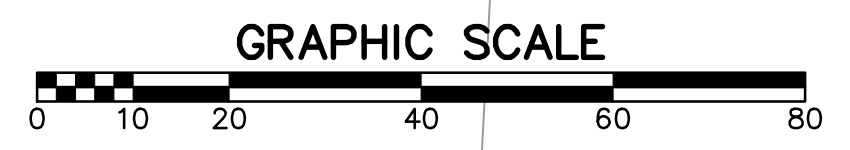
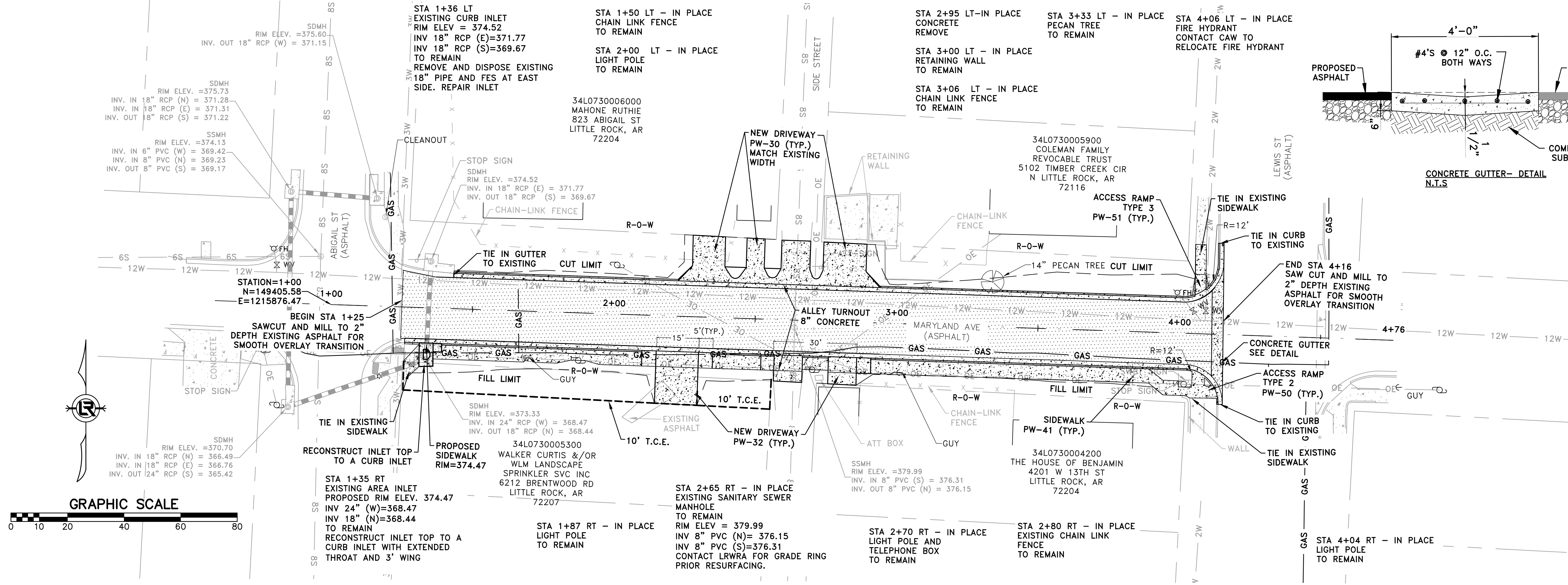
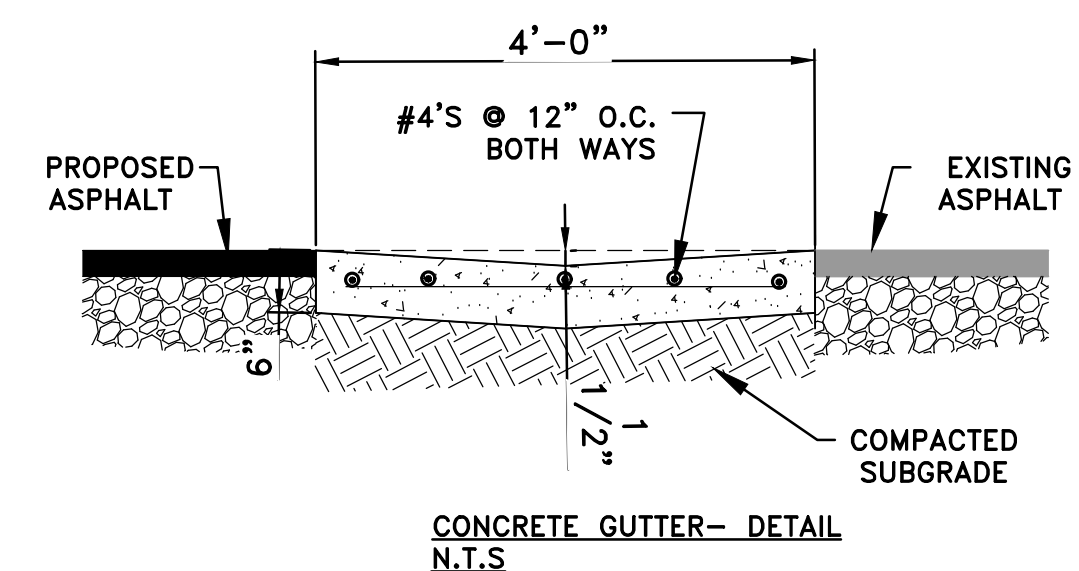
CHECKED
VJW

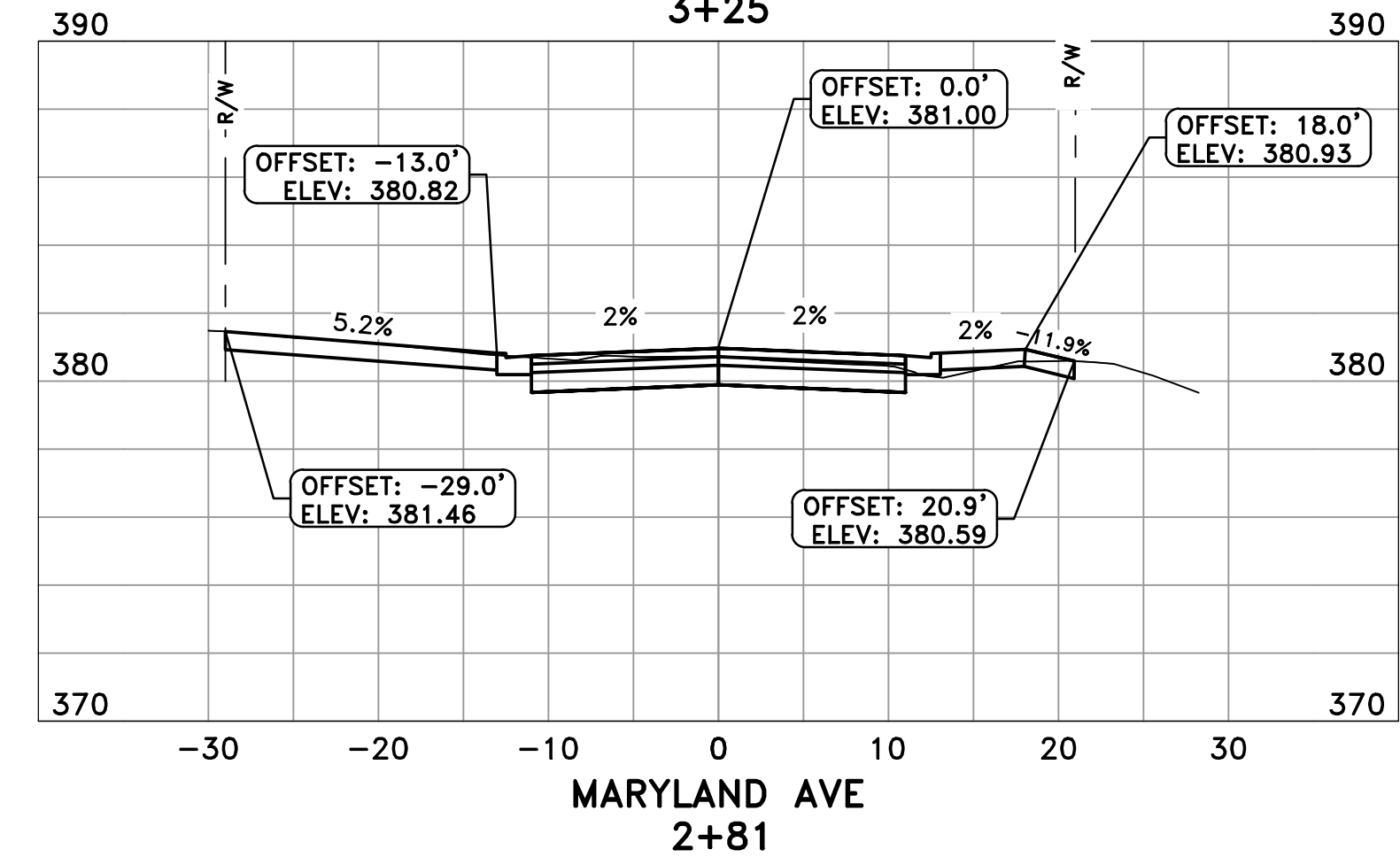
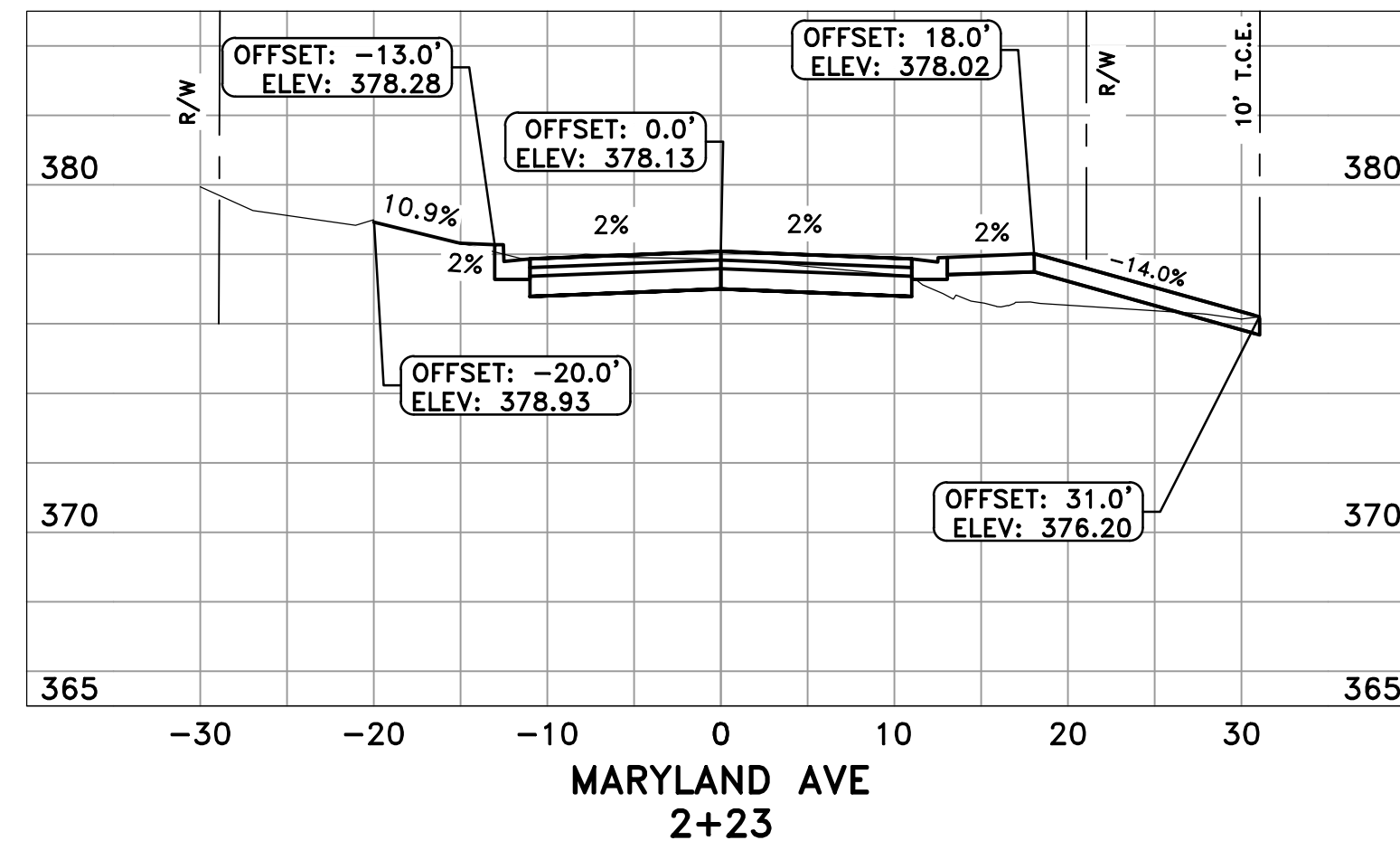
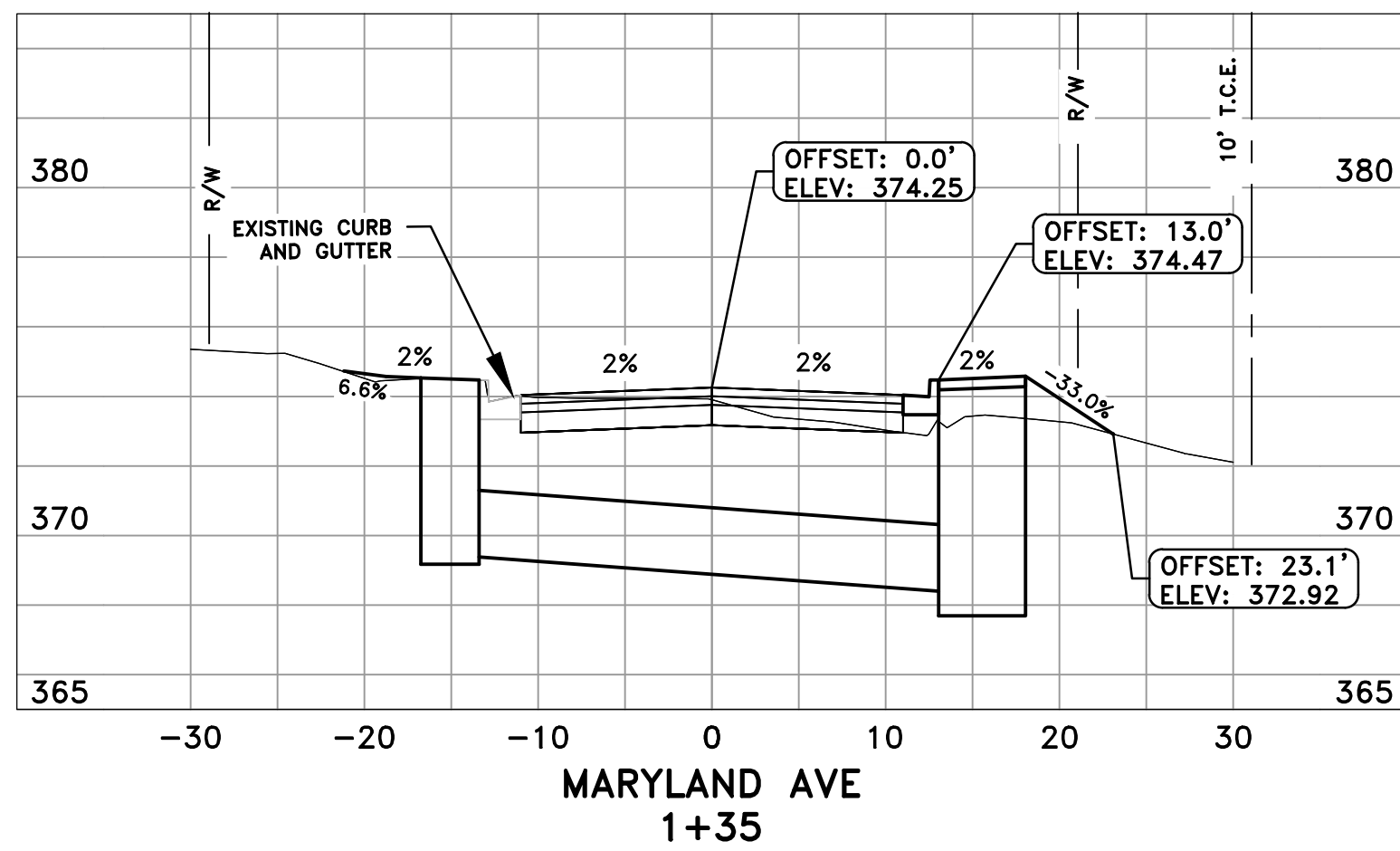
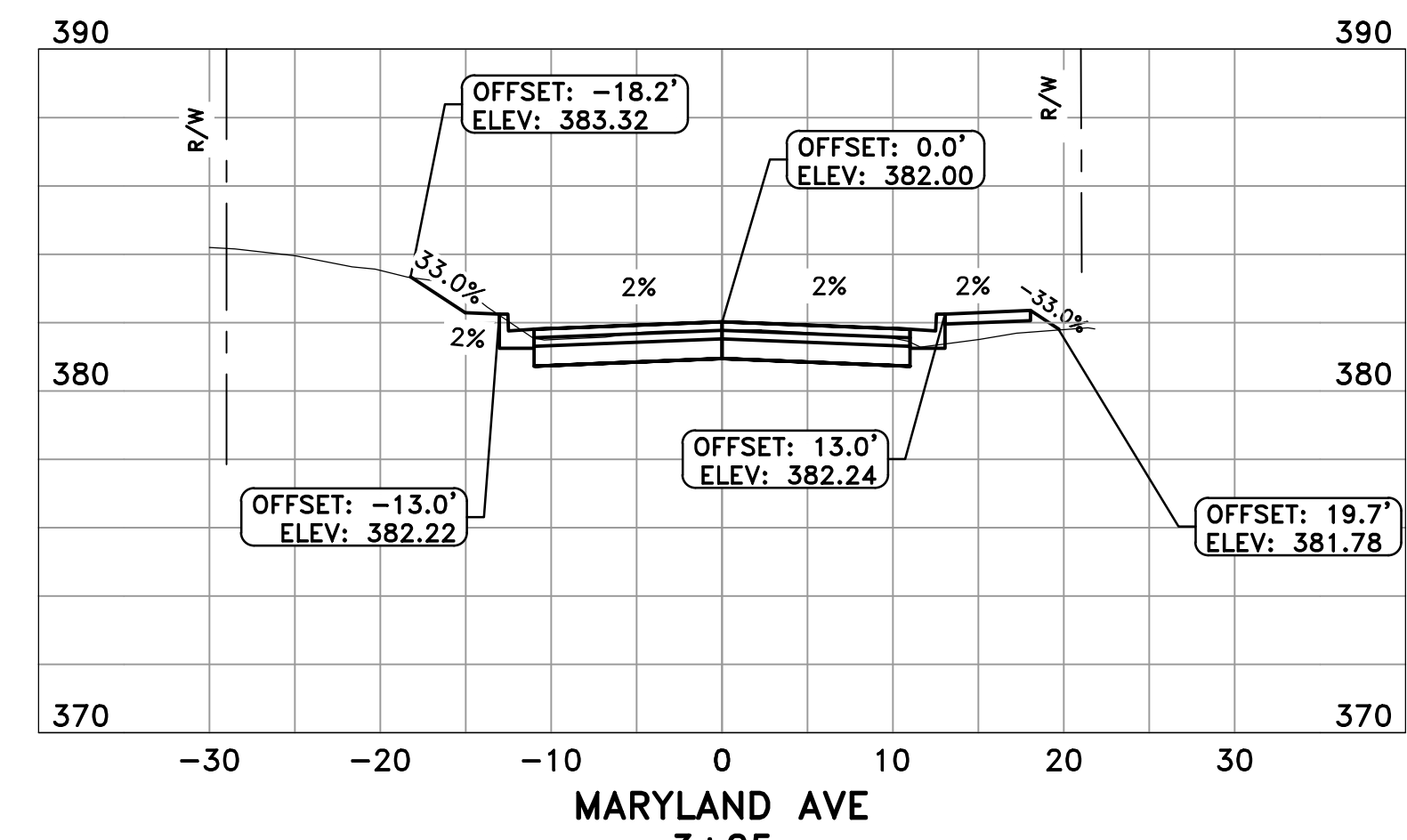
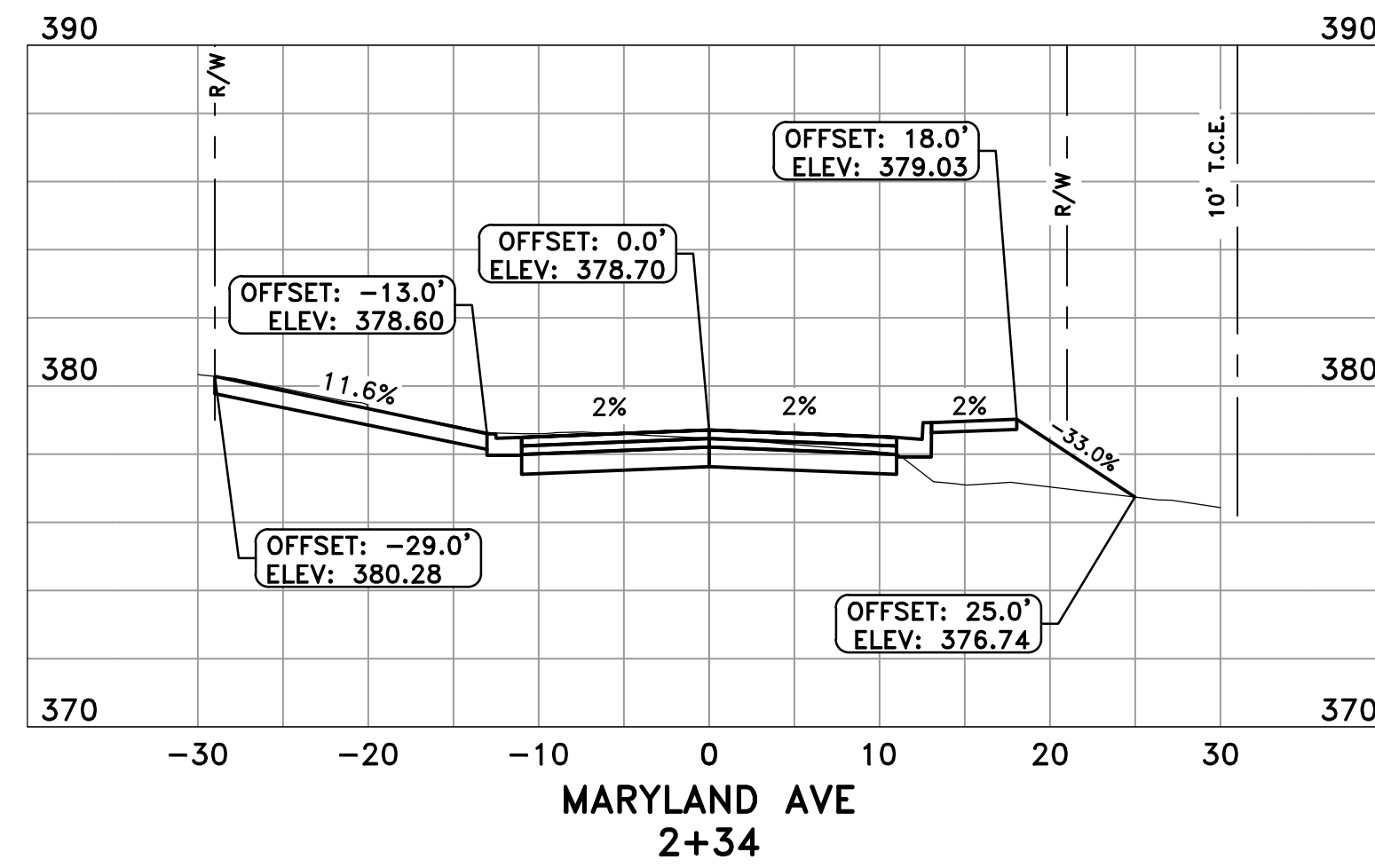
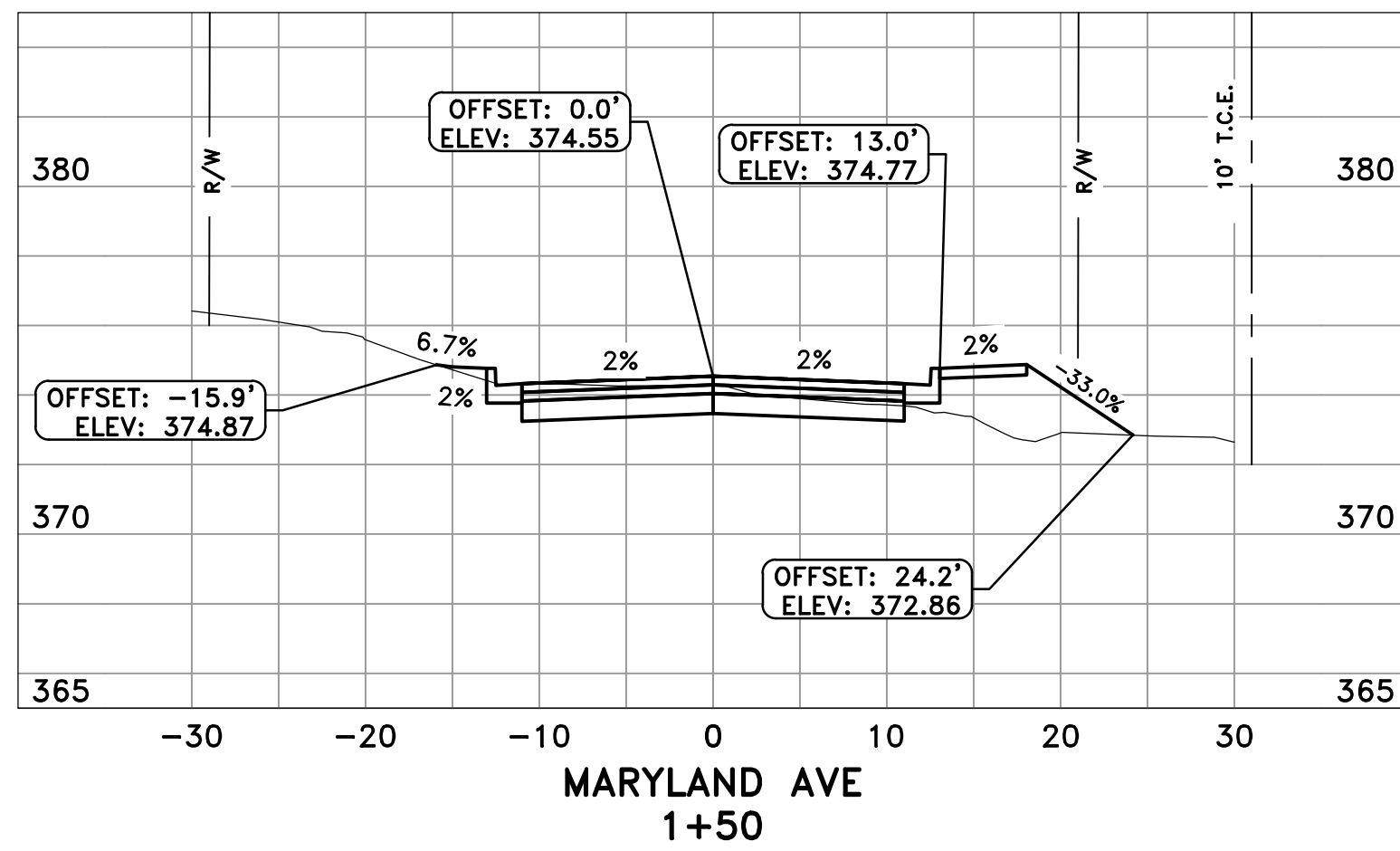
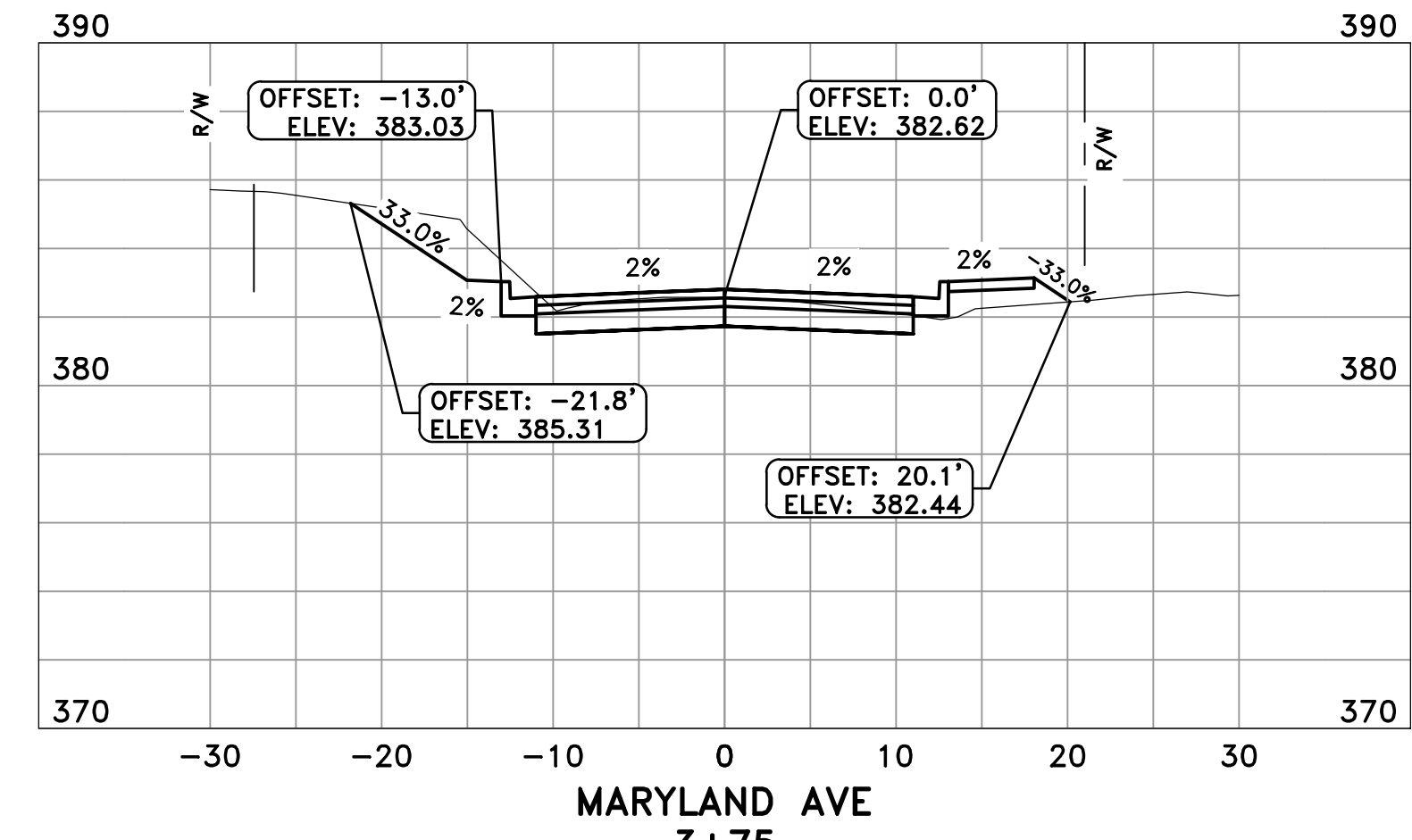
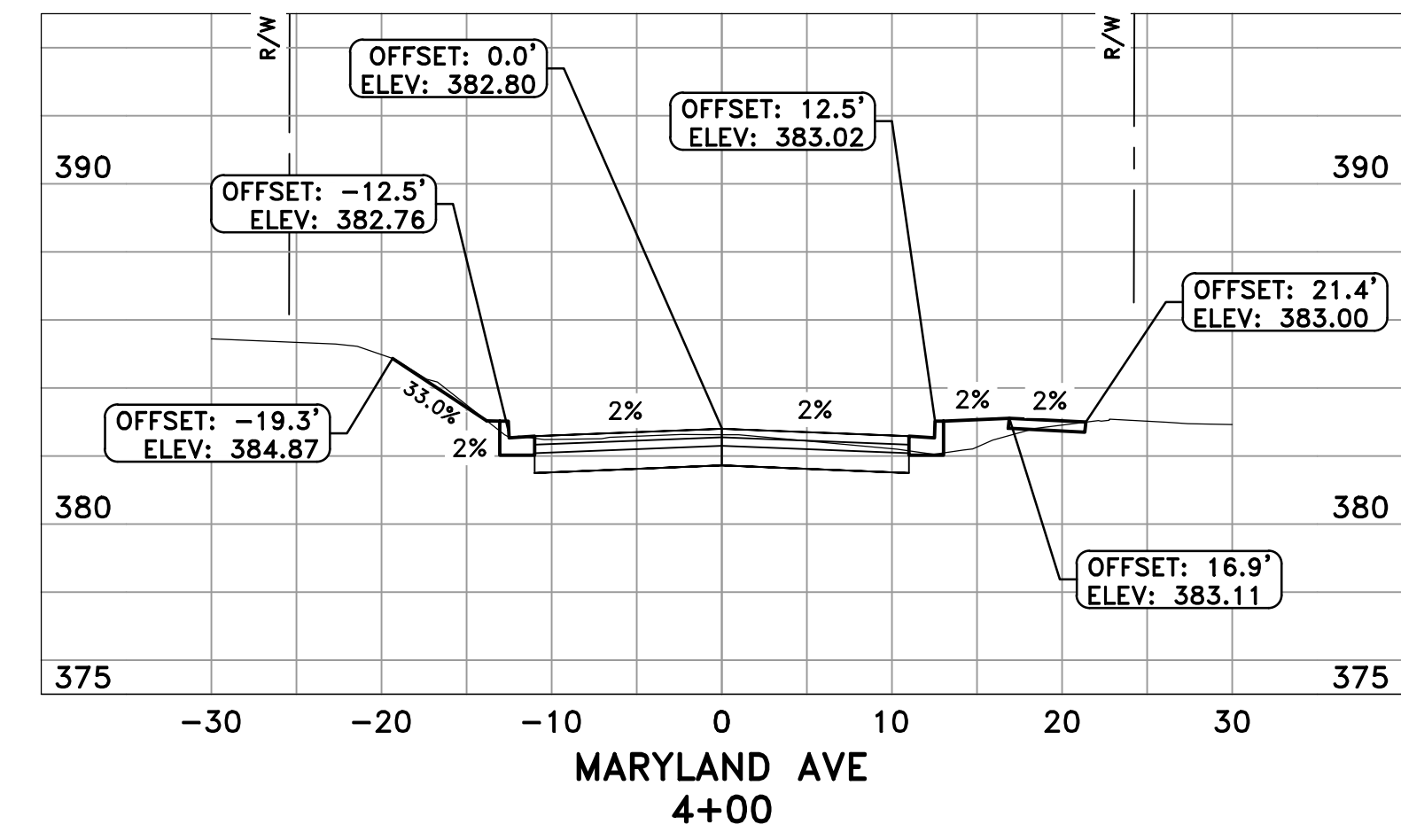
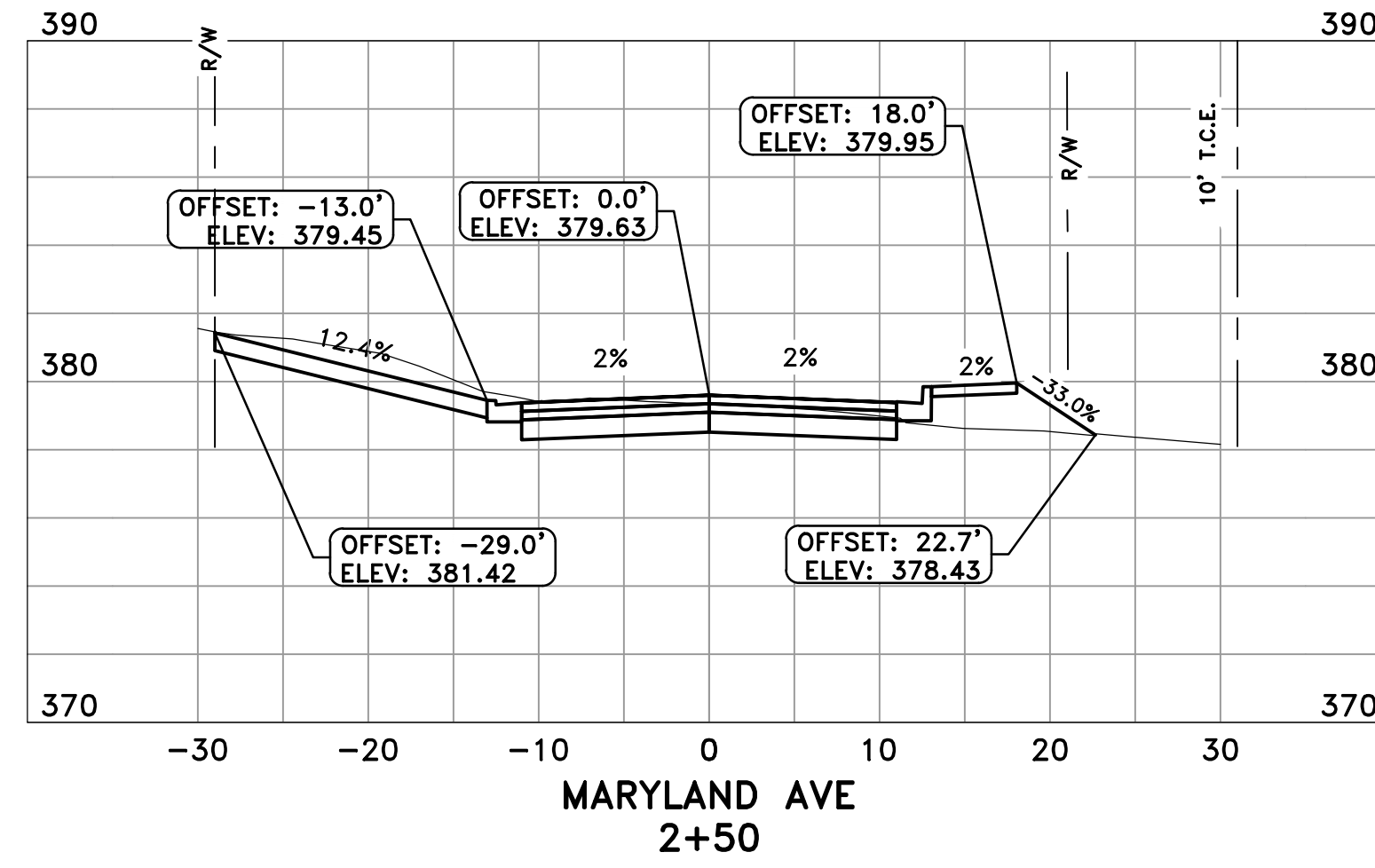
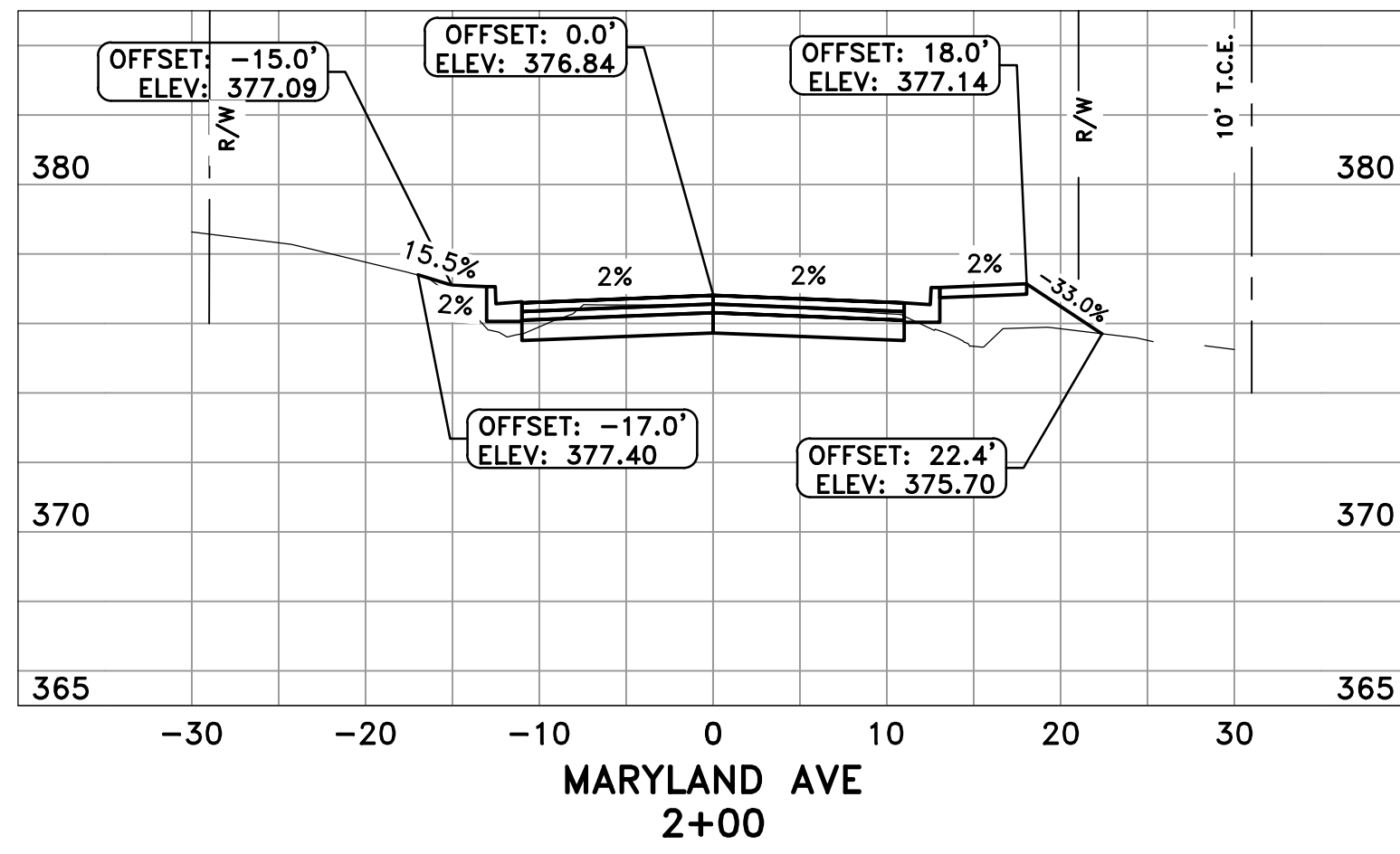
DATE
08-02-2019

SCALE
1"=20' (22X34)

PROJECT NO.
02-17-ST-83

SHEET NO.
C4

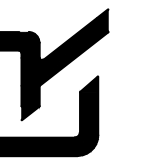




REVISIONS	DATE

CITY OF LITTLE ROCK, ARKANSAS
MARYLAND AVE RECONSTRUCTIONS
CROSS SECTIONS

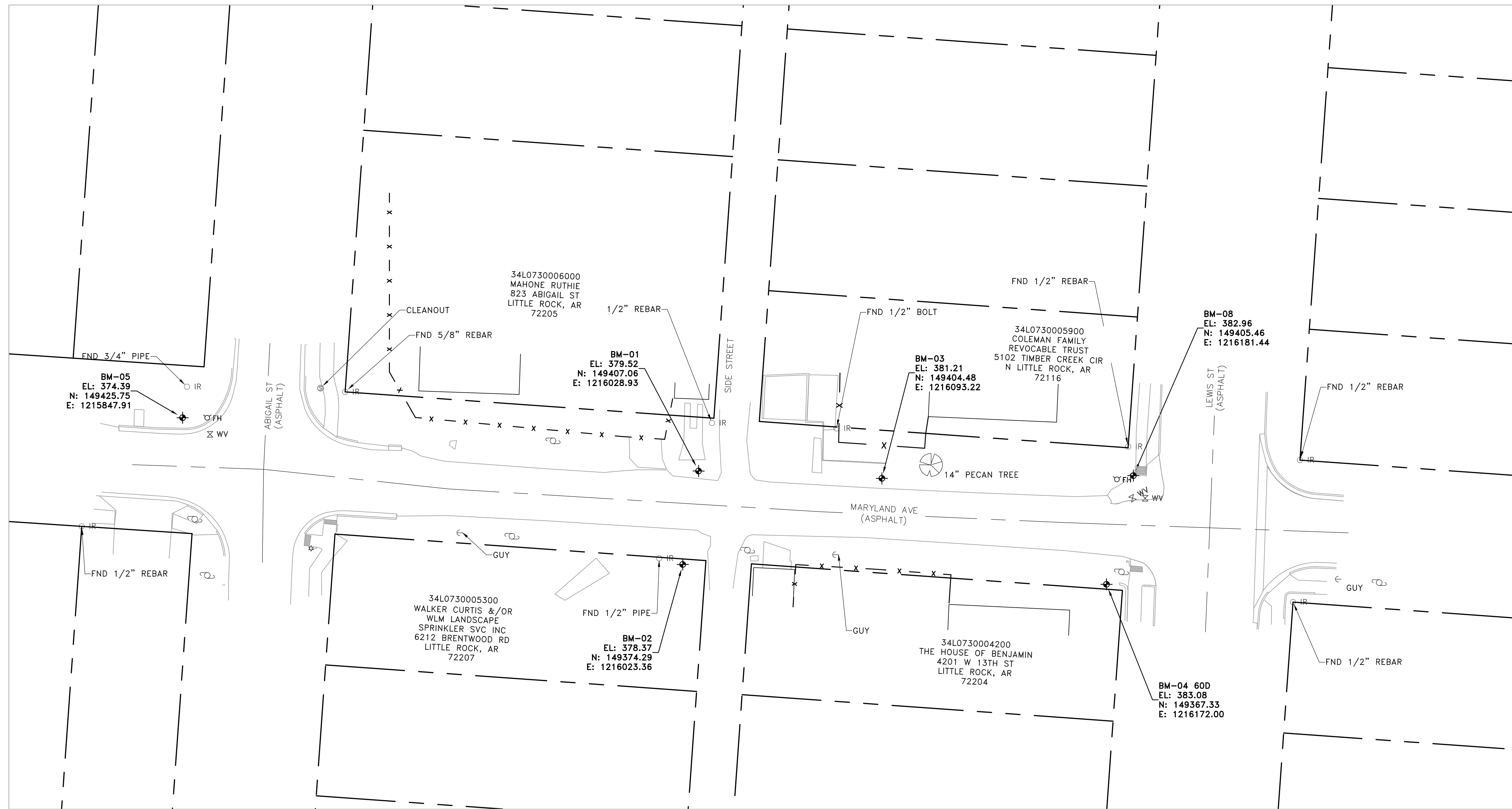
DEPARTMENT OF PUBLIC WORKS
CIVIL ENGINEERING
701 W. MARKHAM
LITTLE ROCK, ARKANSAS 72201



08-02-2019

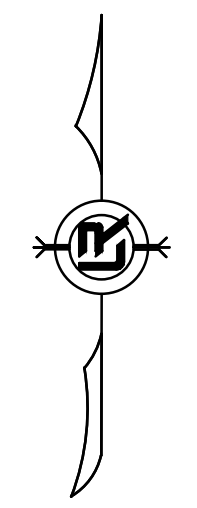
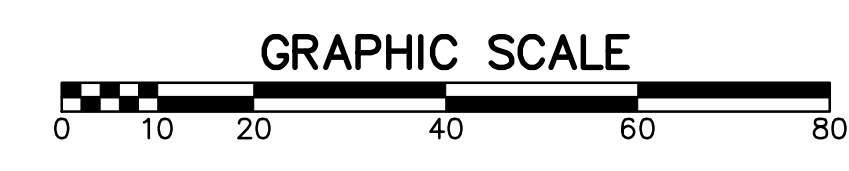
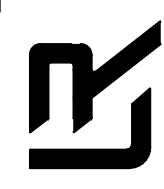
DRAWN BY
NHC & ATV
DESIGNED
NHC & VJW
CHECKED
VJW
DATE
08-02-2019
SCALE
1"=10' HZ : 1"=5' VT
PROJECT NO.
02-17-ST-83
SHEET NO.
C5

REVISIONS	DATE



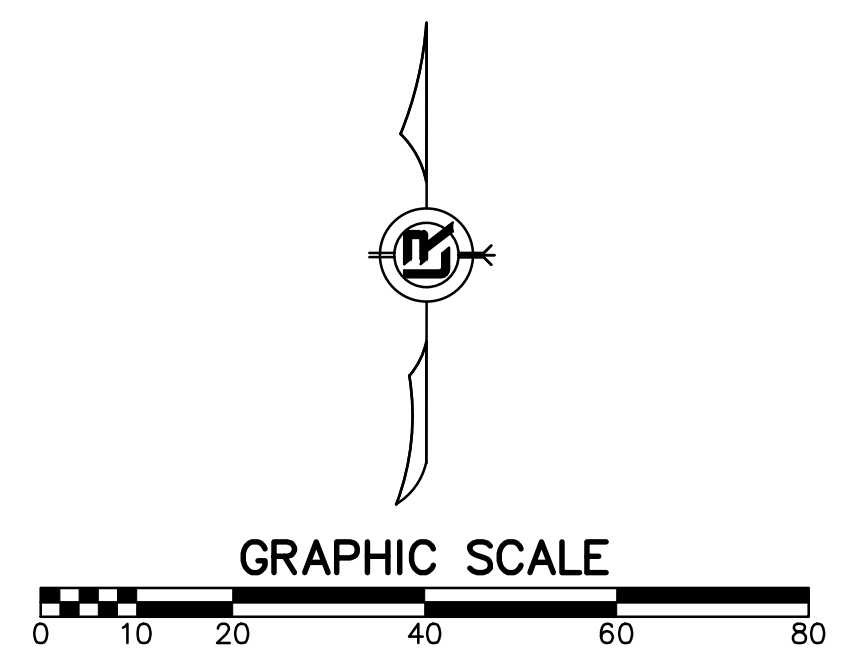
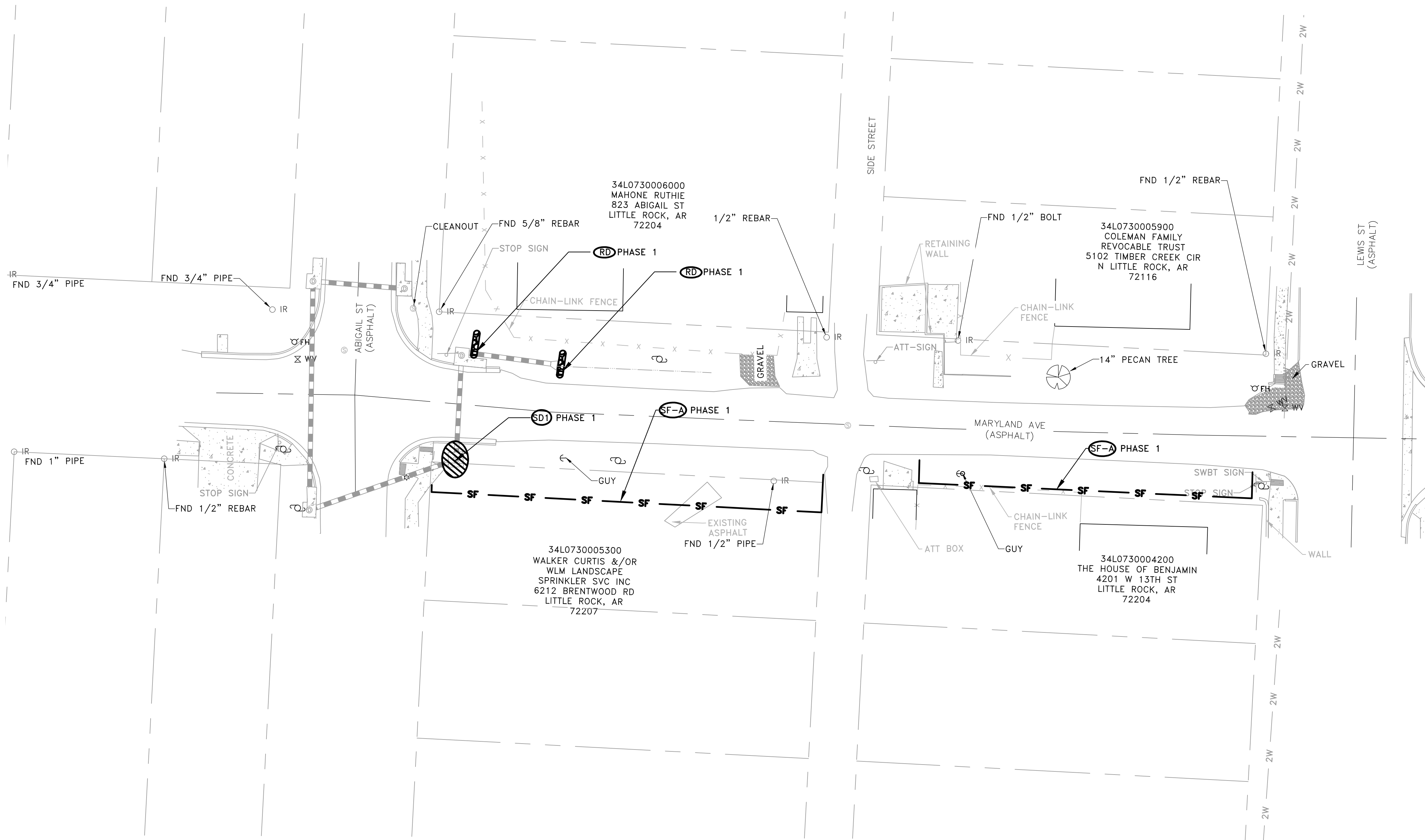
CITY OF LITTLE ROCK, ARKANSAS
 MARYLAND AVENUE RECONSTRUCTION
 SURVEY CONTROL PLAN

DEPARTMENT OF PUBLIC WORKS
 CIVIL ENGINEERING
 701 W. MARKHAM
 LITTLE ROCK, ARKANSAS 72201



DRAWN BY
 ATV
 DESIGNED
 VJW & NHC
 CHECKED
 VJW
 DATE
 08-02-2019
 SCALE
 1"=20' (22X34)
 PROJECT NO.
 02-17-ST-83
 SHEET NO.
 C6

PHASING LEGEND
PHASE 1 (INITIAL STRIP AND DEMOLITION)



REVISIONS	DATE

CITY OF LITTLE ROCK, ARKANSAS
MARYLAND AVE RECONSTRUCTION
EROSION CONTROL PLAN - PHASE 1

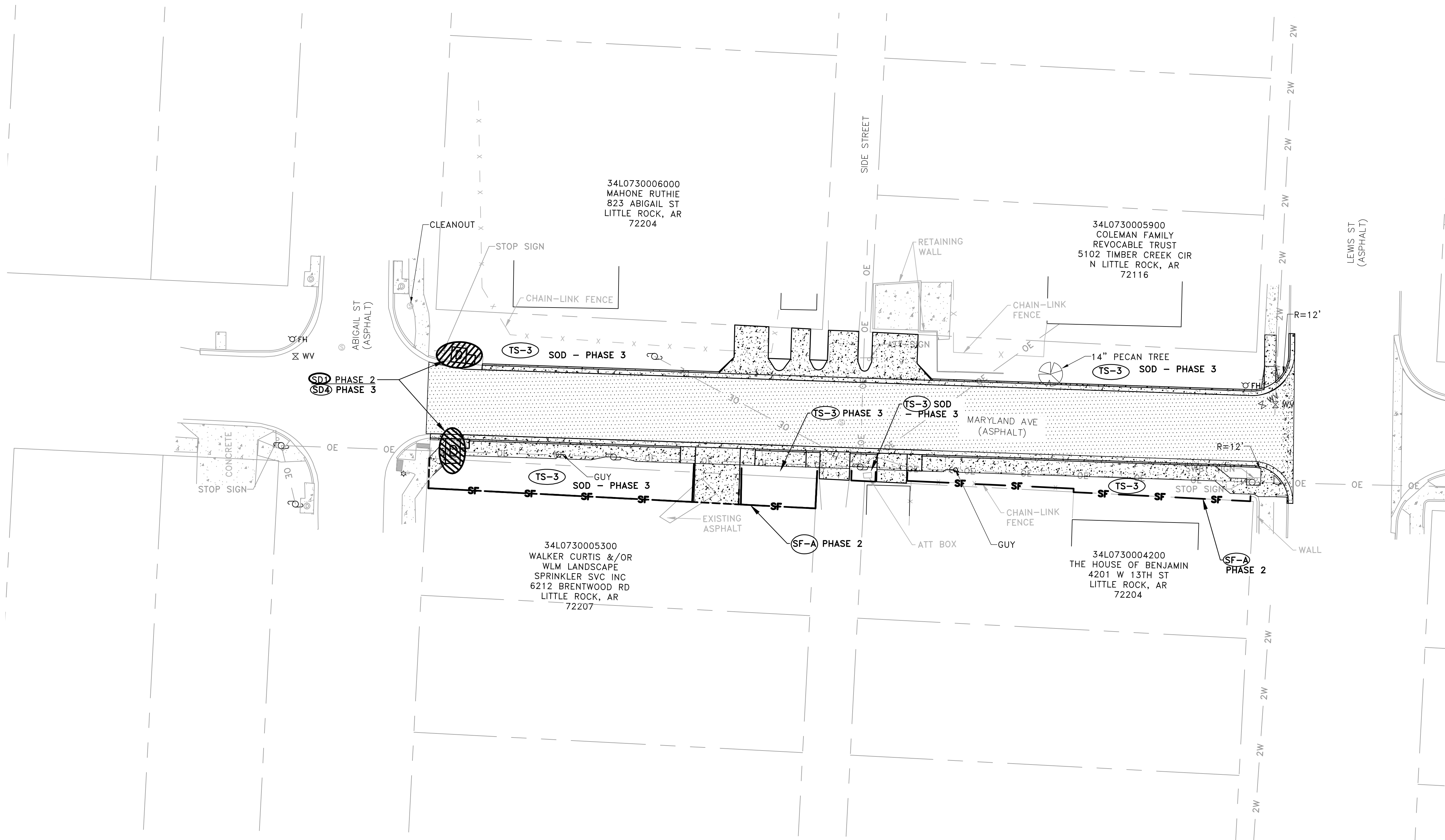
DEPARTMENT OF PUBLIC WORKS
CIVIL ENGINEERING
701 W. MARKHAM
LITTLE ROCK, ARKANSAS 72201



DRAWN BY
ATV
DESIGNED
NHC & VJW
CHECKED
VJW
DATE
08-02-2019
SCALE
1"=20' (22X34)
PROJECT NO.
02-17-ST-83
SHEET NO.
C7

PHASING LEGEND
 PHASE 2 (NEW DRAINAGE AND BASE COURSE IN PLACE)
 PHASE 3 (PAVED, GRASS NOT YET ESTABLISHED)

REVISIONS	DATE

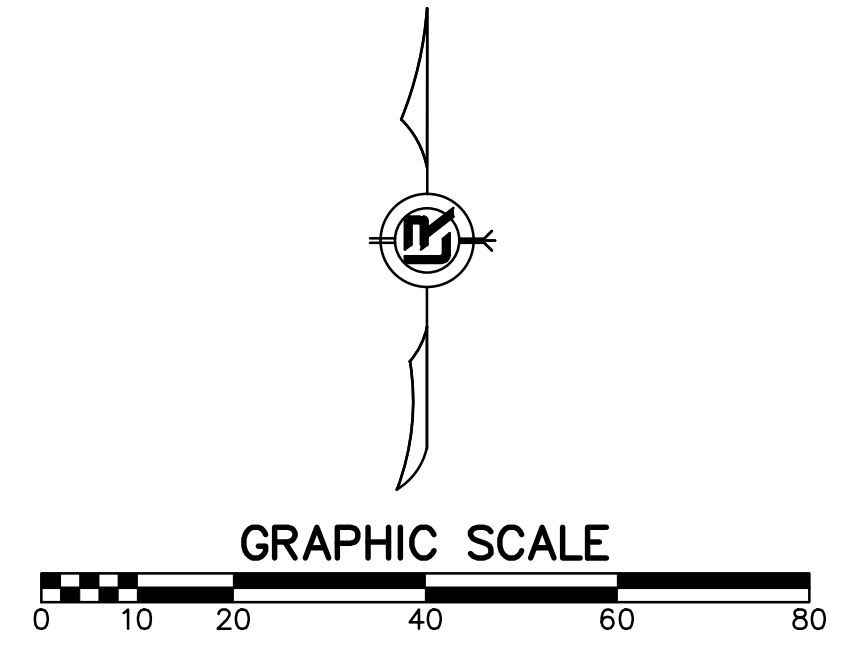


CITY OF LITTLE ROCK, ARKANSAS
MARYLAND AVE RECONSTRUCTION
EROSION CONTROL PLAN - PHASES 2 & 3

DEPARTMENT OF PUBLIC WORKS
CIVIL ENGINEERING
 701 W. MARKHAM
 LITTLE ROCK, ARKANSAS 72201



DRAWN BY
ATV
DESIGNED
NHC & VJW
CHECKED
VJW
DATE
08-02-2019
SCALE
1"=20' (22X34)
PROJECT NO.
02-17-ST-83
SHEET NO.
C8



REVISIONS	DATE

CITY OF LITTLE ROCK, ARKANSAS
 MARYLAND AVE RECONSTRUCTION
 MAINTENANCE OF TRAFFIC PLAN

DEPARTMENT OF PUBLIC WORKS
 CIVIL ENGINEERING
 701 W. MARKHAM
 LITTLE ROCK, ARKANSAS 72201



DRAWN BY
 ATV
 DESIGNED
 NHC
 CHECKED
 VJW
 DATE
 08-02-2019
 SCALE
 N.T.S.
 PROJECT NO.
 02-17-ST-83
 SHEET NO.
 C9



- MAINTENANCE OF TRAFFIC NOTES:
 WITHIN CONSTRUCTION LIMITS CONTRACTOR SHALL:
1. MAINTAIN CONTINUOUS VEHICULAR ACCESS TO ALL RESIDENCES.
 2. PROVIDE, INSTALL, AND MAINTAIN (INCLUDING RELOCATION AS NEEDED) ALL TRAFFIC CONTROL DEVICES.

